



LOUISIANA COASTAL MASTER PLAN

&

CPRA ANNUAL PLAN

COMMITTED TO OUR COAST

Public Recreation Task Force



Attachment A - Minutes

August 29, 2019

COASTAL PROTECTION AND RESTORATION AUTHORITY

Single state entity with authority to articulate a clear statement of priorities to achieve comprehensive coastal protection for Louisiana.

Mandate is to develop, implement, and enforce a comprehensive coastal protection and restoration Master Plan.

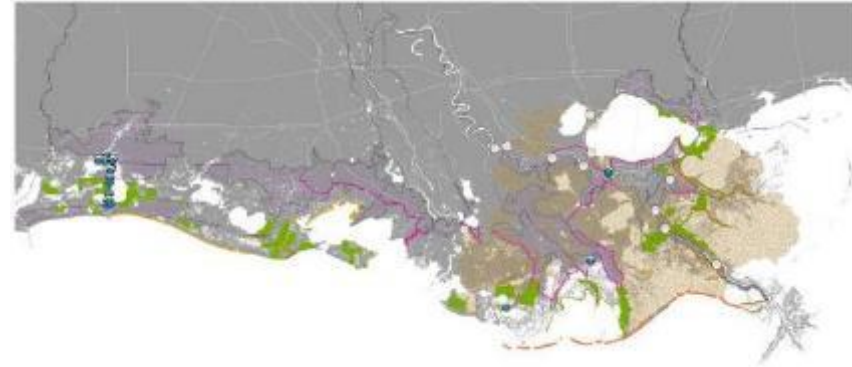




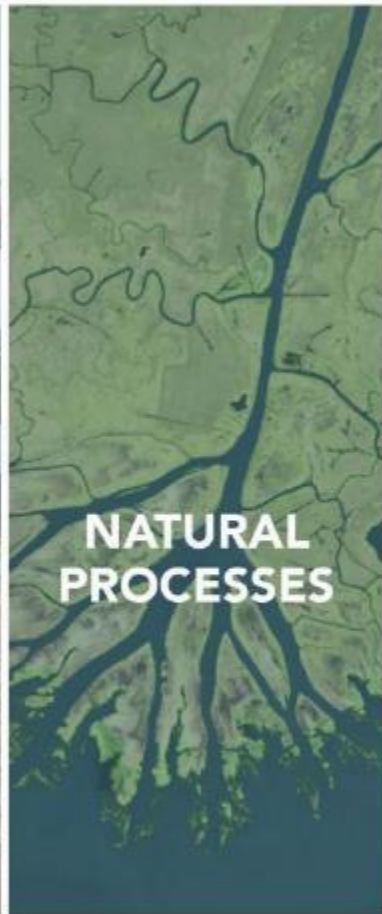
LOUISIANA COASTAL MASTER PLAN

WHAT IS THE COASTAL MASTER PLAN?

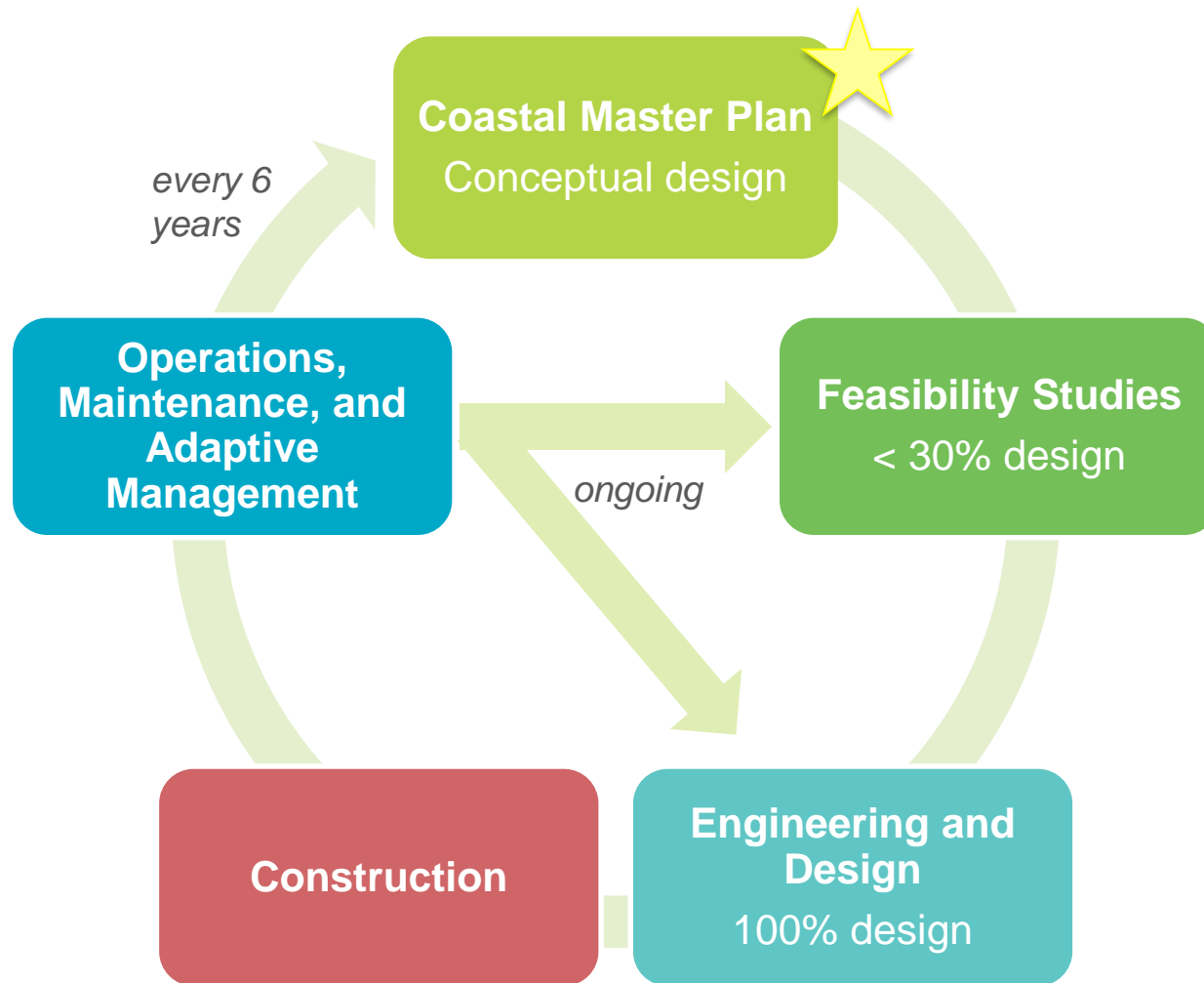
- Required by law to be updated every six years
- Built on world class science and engineering
- Incorporates extensive public input and review
- Advances a comprehensive and integrated approach to protection and restoration
- Identifies investments that will pay off, not just for us, but for our children and grandchildren



COASTAL MASTER PLAN OBJECTIVES



HOW ARE CPRA PROJECTS IMPLEMENTED?



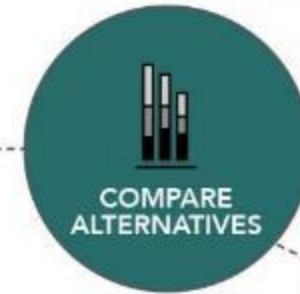
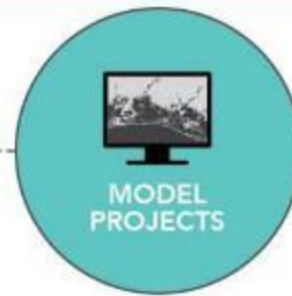
TECHNICAL ANALYSIS

DEVELOPING THE PLAN

COASTAL PROJECTS

PREDICTIVE MODELS

PLANNING TOOL



OUTREACH & ENGAGEMENT

TECHNICAL ANALYSIS







PREDICTIVE MODELS

INTEGRATED COMPARTMENT MODEL



TECHNICAL ANALYSIS

2017 ENVIRONMENTAL SCENARIOS

SCENARIO	 SEA LEVEL RISE	 SUBSIDENCE	 STORM FREQUENCY	 AVG. STORM INTENSITY	 PRECIPITATION	 EVAPO-TRANSPIRATION
LOW	1.41'	20% OF RANGE	-28%	+10.0%	>HISTORICAL	<HISTORICAL
MEDIUM	2.07'	20% OF RANGE	-14%	+12.5%	>HISTORICAL	HISTORICAL
HIGH	2.72'	50% OF RANGE	0%	+15.0%	HISTORICAL	HISTORICAL

TECHNICAL ANALYSIS

2017 PLANNING FRAMEWORK

DECISION DRIVERS



REDUCING
FLOOD RISK



BUILDING/
MAINTAINING
LAND

CONSTRAINTS



SEDIMENT



FUNDING

METRICS

COMMUNITY METRICS



AGRICULTURAL
COMMUNITIES



FLOOD
PROTECTION
OF STRATEGIC
ASSETS



OIL & GAS
COMMUNITIES



SOCIAL
VULNERABILITY



FLOOD
PROTECTION
OF HISTORIC
PROPERTIES



NAVIGATION



TRADITIONAL
FISHING
COMMUNITIES

ENVIRONMENTAL METRICS



ALLIGATOR



CRAWFISH



SALTWATER FISH



USE OF NATURAL
PROCESSES



BLUE CRAB



FRESHWATER FISH



SHRIMP



WATERFOWL



BROWN PELICAN



OYSTERS



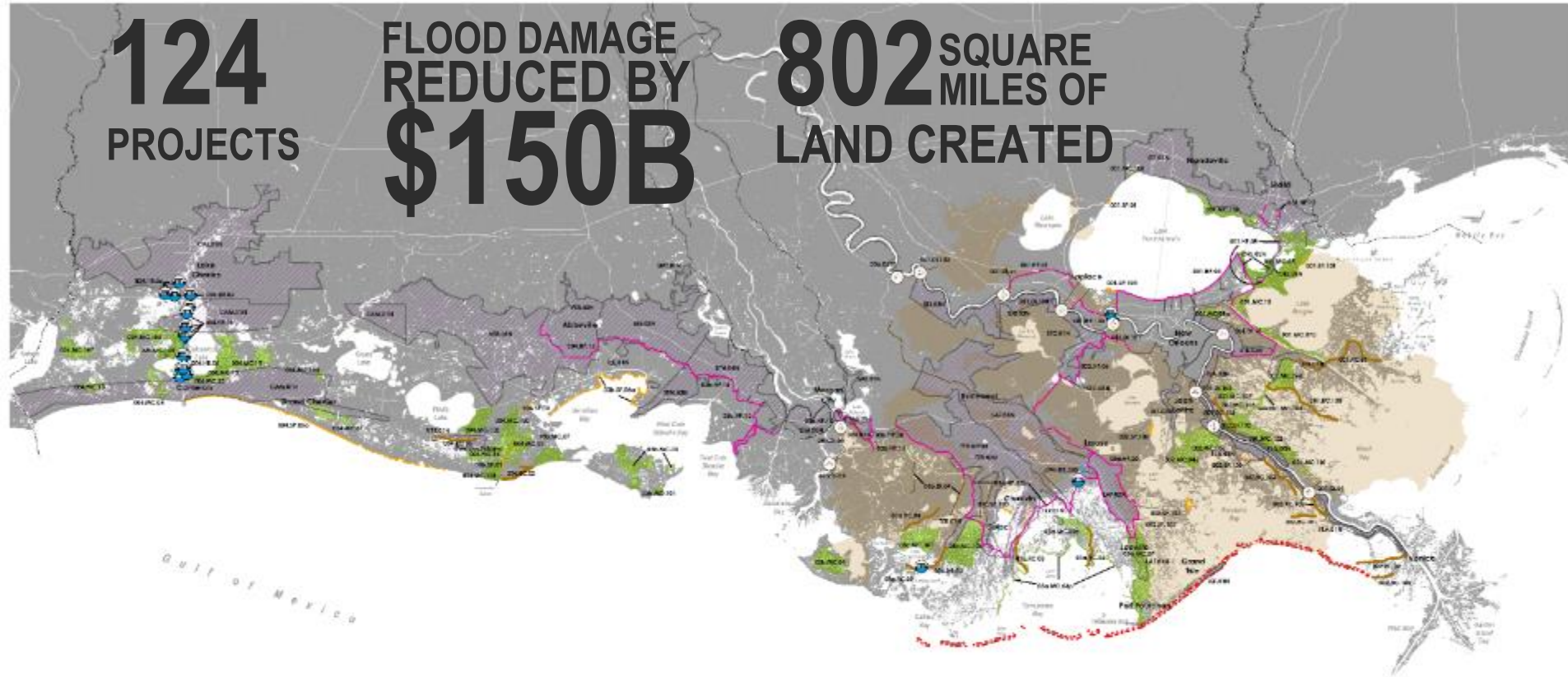
SUSTAINABILITY
OF LAND

2017 COASTAL MASTER PLAN

124
PROJECTS

FLOOD DAMAGE
REDUCED BY
\$150B

802 SQUARE
MILES OF
LAND CREATED



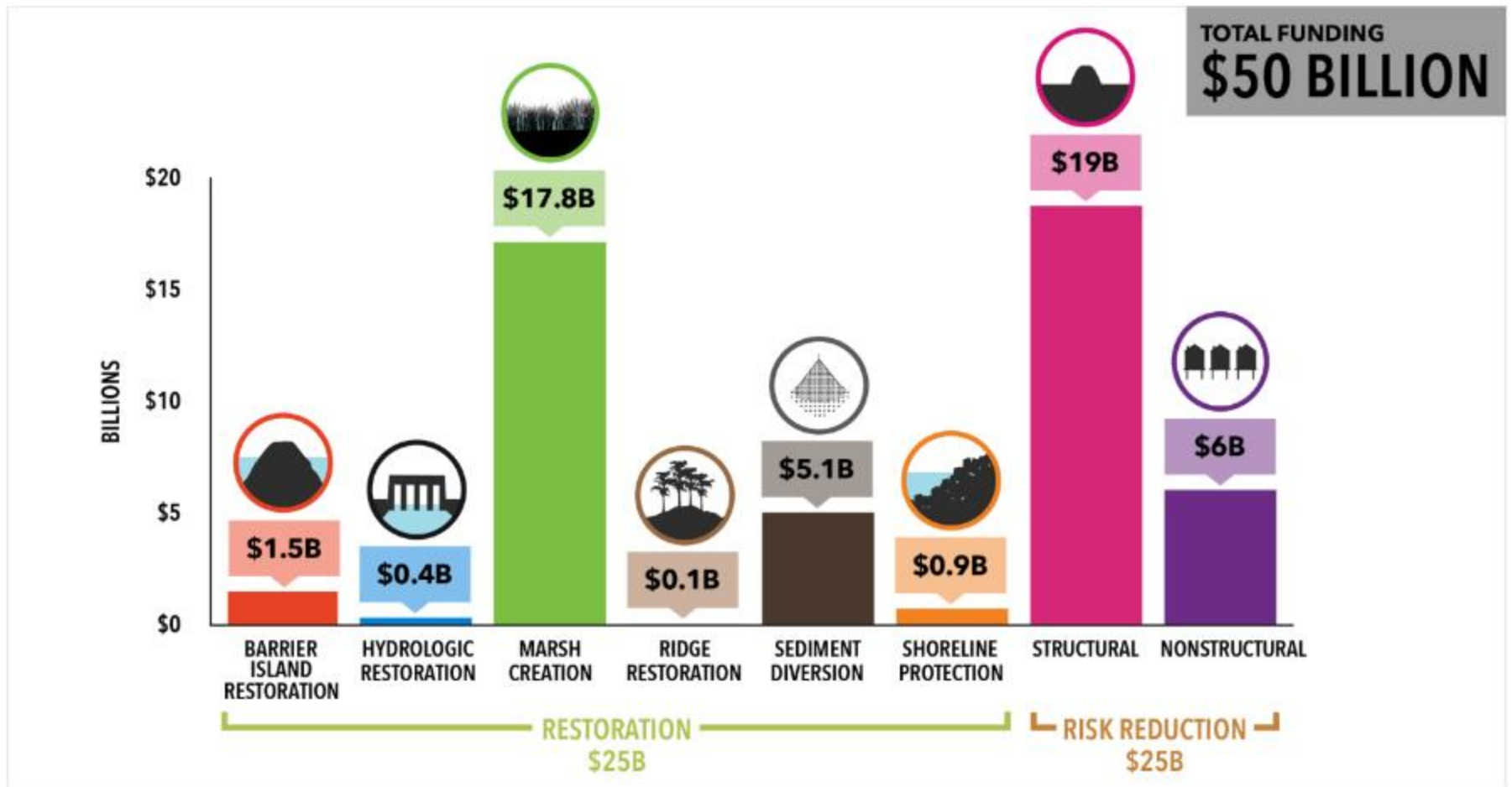
PROJECT TYPES



Small scale hydrologic restoration and oyster reef/living shoreline projects are included programmatically in the 2017 Coastal Master Plan. Consistency of individual projects will be determined on a case-by-case basis.



2017 COASTAL MASTER PLAN FUNDING BY PROJECT TYPE



2017 COASTAL MASTER PLAN

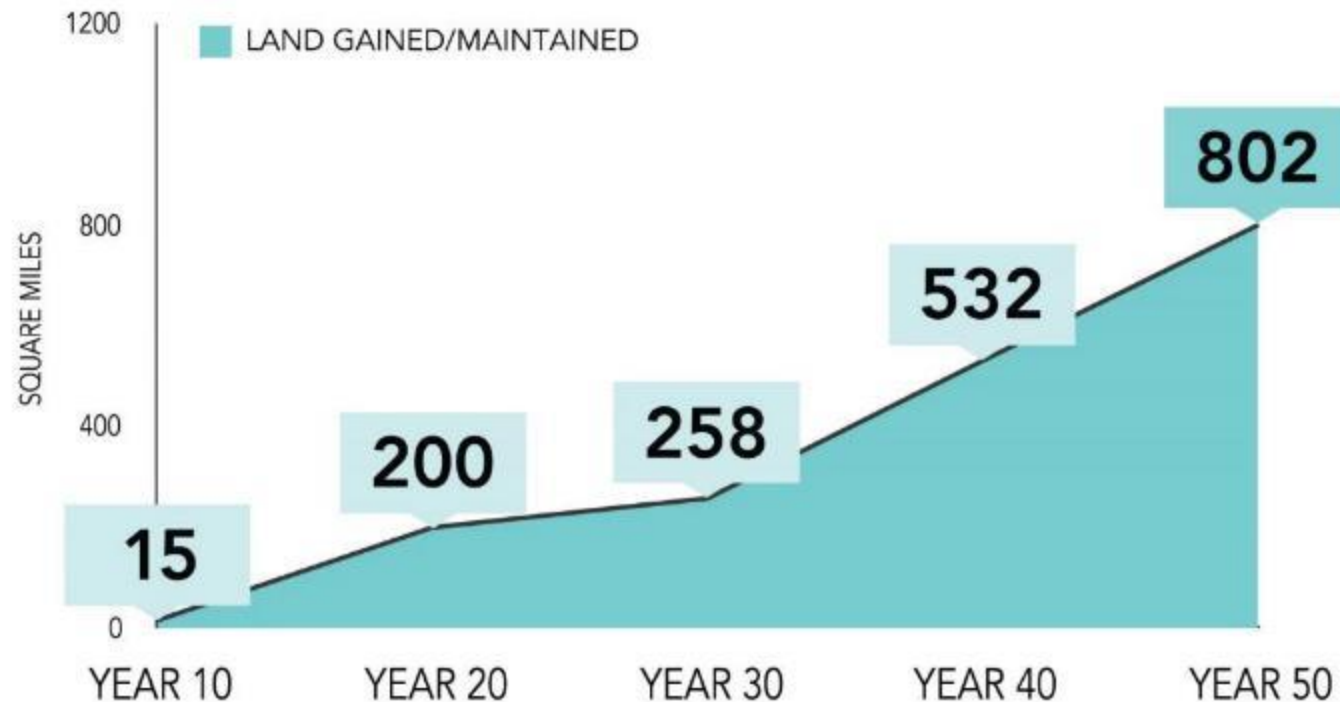
LAND GAINED/MAINTAINED

POTENTIAL LAND GAINED/MAINTAINED OVER TIME

FUTURE WITH ACTION

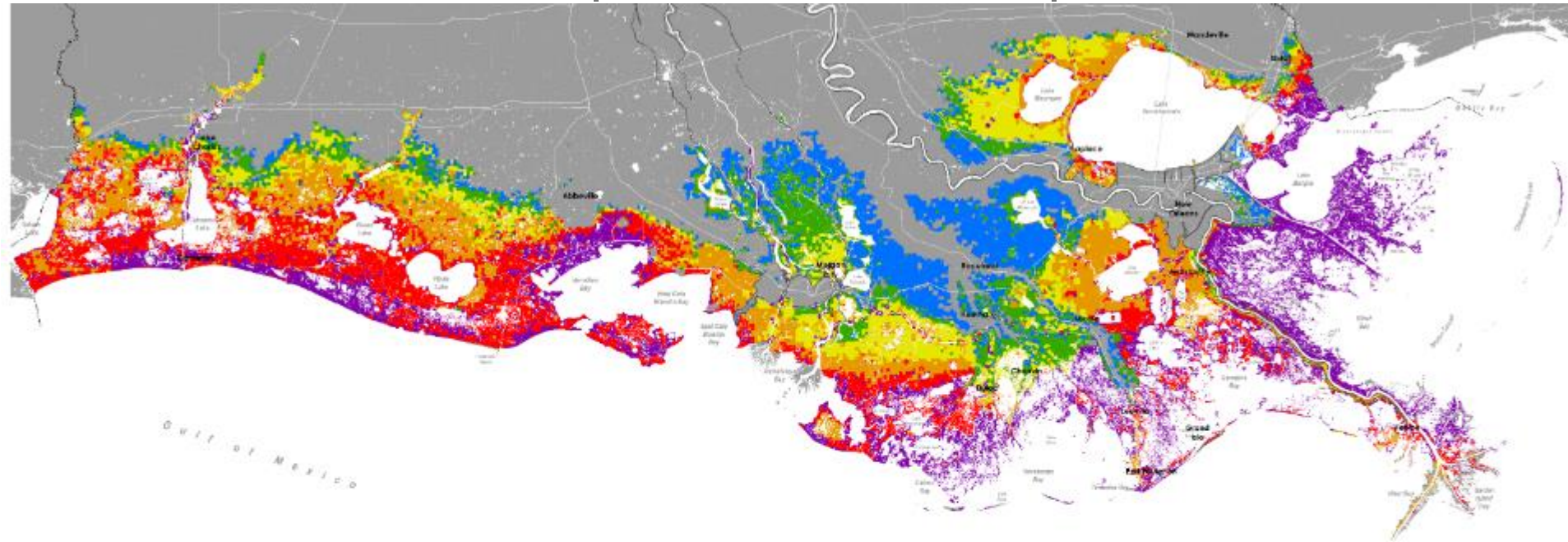
SCENARIO

MEDIUM

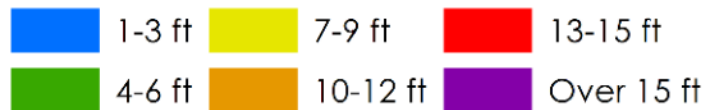


2017 COASTAL MASTER PLAN

FUTURE WITH ACTION | MEDIUM SCENARIO | YEAR 50



Flood Depths

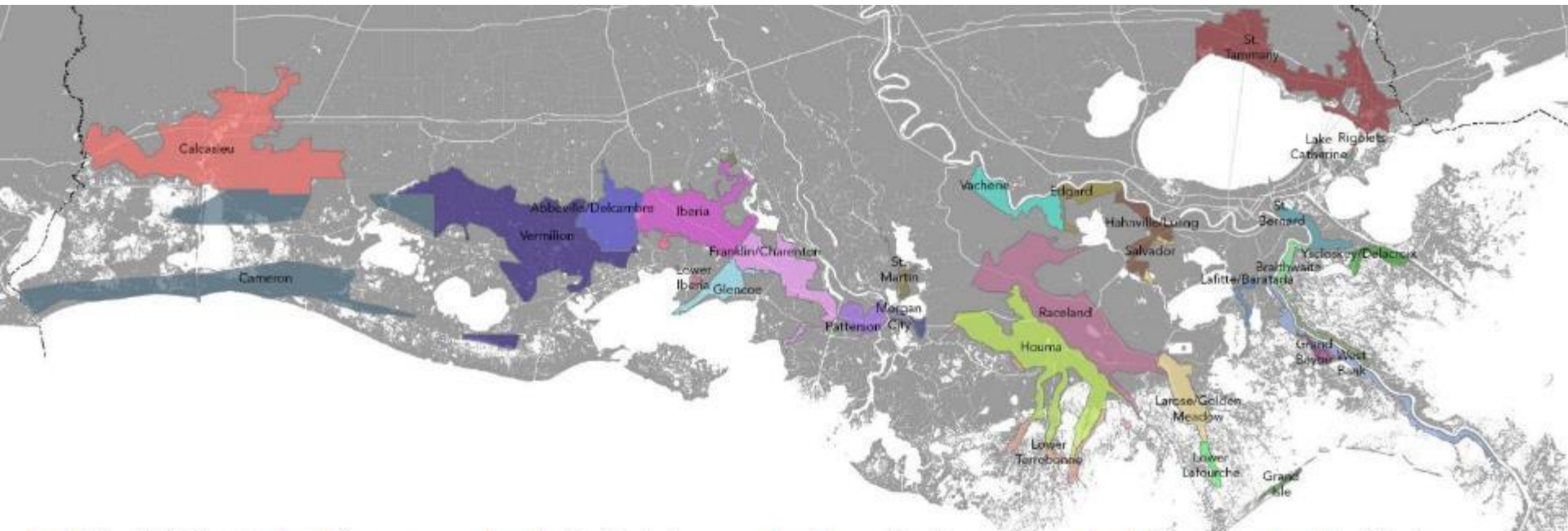


0 5 10 20
Miles



2017 COASTAL MASTER PLAN

NONSTRUCTURAL RISK REDUCTION PROJECTS



- | | | | | | |
|---------------------|------------------|----------------------|---------------------------|-------------|---------------------|
| Abbeville/Delcambre | Glencoe | Lafitte/Barataria | Lower Terrebonne | Salvador | West Bank |
| Braithwaite | Grand Bayou | Lake Catherine | Morgan City | St. Bernard | Yscloskey/Delacroix |
| Calcasieu | Grand Isle | Larose/Golden Meadow | Patterson | St. Martin | |
| Cameron | Hahnville/Luling | Lower Iberia | Phoenix/Pointe A La Hache | St. Tammany | |
| Edgard | Houma | Lower Lafourche | Raceland | Vacherie | |
| Franklin/Charenton | Iberia | Lower St. Mary | Rigolets | Vermilion | |

2017 COASTAL MASTER PLAN

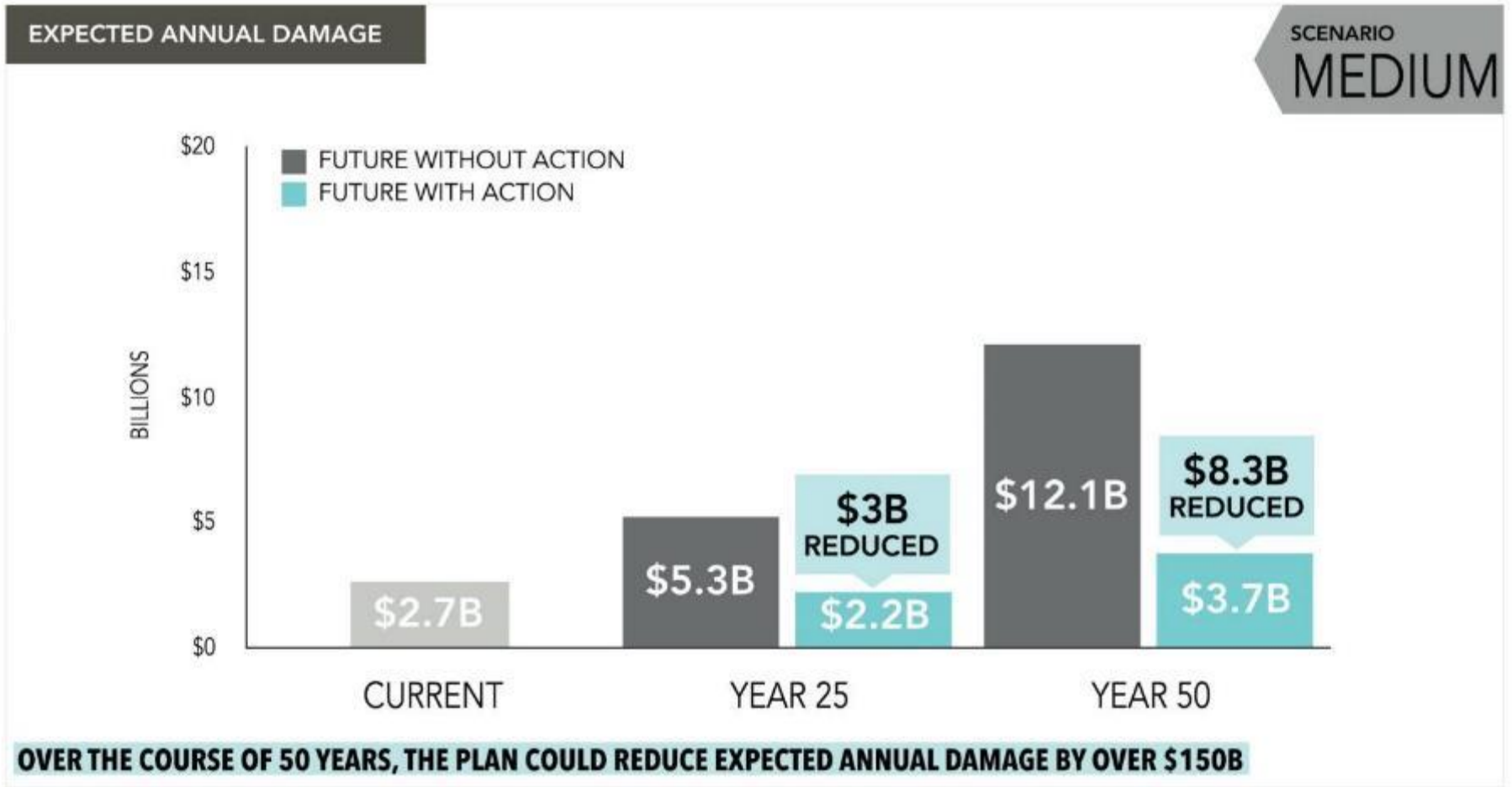
NONSTRUCTURAL RISK REDUCTION PROJECTS



~26,000 structures mitigated for \$6B over 50 years

2017 COASTAL MASTER PLAN

REDUCTION IN EXPECTED ANNUAL DAMAGE



THANK YOU