

PRIVATE PROPERTY  
NO ADMITTANCE

SUBSIDENCE AREA

(RIG ROAD NOT USED IN DERIVING CONTOURS AND VOLUME CALCULATIONS)

10/04/12  
-10.0' CONTOUR

10/30/14  
-10.0' CONTOUR

07/16/14  
-10.0' CONTOUR

12/12/13  
-10.0' CONTOUR

11/12/13  
-10.0' CONTOUR

01/16/14  
-10.0' CONTOUR

09/20/13  
-10.0' CONTOUR

02/06/15  
LIMITS OF -2.0' CONTOUR  
(PRIMARY EDGE OF SUBSIDENCE)

03/14/14  
-10.0' CONTOUR

04/15/14  
-10.0' CONTOUR

02/06/15  
LIMITS OF -10.0' CONTOUR  
(EDGE OF SINKHOLE)

09/12/14  
-10.0' CONTOUR

CONTAINMENT LEVEE

CONTAINMENT LEVEE NOT USED IN DERIVING CONTOURS AND VOLUME CALCULATIONS

W

NNE

N

E

SSE

SSW

WALL #0 PAD

BAYOU CORNE

PLAN SCALE: 1" = 50'

AERIAL IMAGE TAKEN ON 2/06/15.

01-29-15 SURVEY NOTES:

1) Increased bubble activity observed on east side of sinkhole.

2) Reduced water visibility observed to a depth of approximately -5' (Dily sheen).

3) Bottom elevation by fathometer was approximately -182'.

4) Bottom elevation by wireline was approximately -182'.

WEIGHTED WIRELINE MEASUREMENTS ... (TAKEN ON 01/29)

ROD SOUNDING LOCATION ... (TAKEN ON 02/02 - 02/09)

AREA & VOLUME CALCULATIONS: USING THE LIMITS OF THE -10' CONTOUR AS SHOWN AND AN UPPER ELEVATION LIMIT OF -2.0', THE SINKHOLE RAW INTERNAL VOLUME MEASURES APPROXIMATELY 3,342,955 CU. YDS.

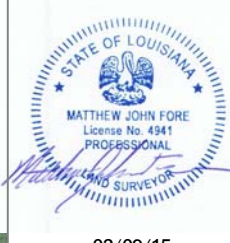
USING THE LIMITS OF THE SURVEY AND WITH AN UPPER ELEVATION LIMIT OF -2.0', THE SUBSIDENCE AREA (-2' TO -10') RAW INTERNAL VOLUME MEASURES APPROXIMATELY 126,187 CU. YDS.

APPROXIMATE AREA OF -10.0' CONTOUR = 31.1 ACRES

APPROXIMATE SUBSIDENCE AREA = 25.3+ ACRES

TOTAL AREA = 56.4+ ACRES

NOTE: CONTAINMENT ROAD NOT USED IN CONTOURS AND VOLUME CALCULATIONS.



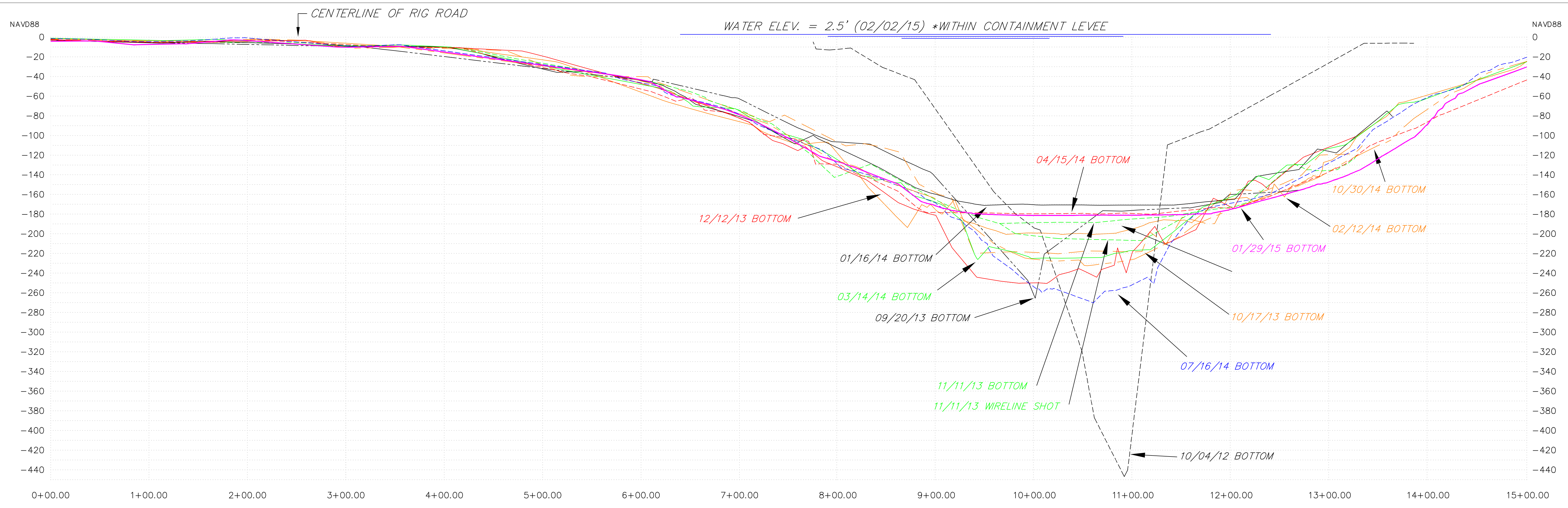
Miller Engineers & Associates, Inc.  
Consulting Engineers & Land Surveyors  
601 Main Street P.O. Box 223  
Franklin, La. 70538

TEXAS BRINE  
BAYOU CORNE/GRAND BAYOU SINKHOLE  
PLAN AND PROFILE

JANUARY 2015  
PLAN & PROFILE

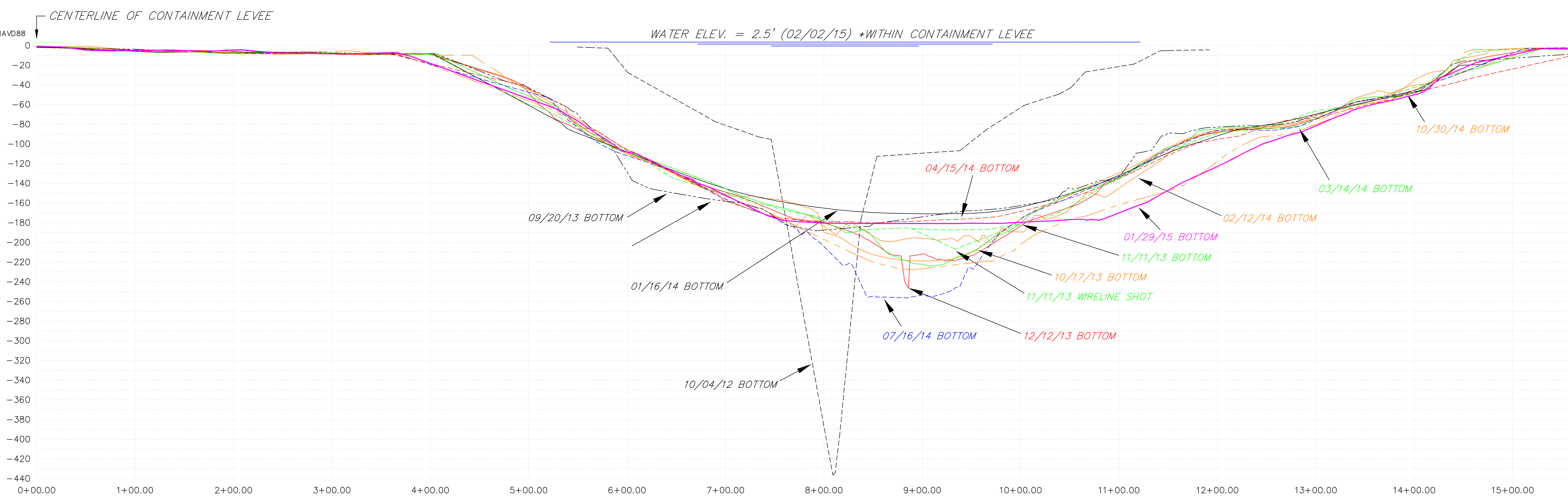
Drawn: M. J. Fore, PLS  
Date: 10/04/2012  
Project No: 13532  
Scale: As Shown  
Revised: 02/09/15  
Sheet 1 of 3





**CROSS SECTION W-E**

**PROFILE:**  
 HORIZONTAL: 1"=50'  
 VERTICAL: 1"=50'



**CROSS SECTION S-N**

**PROFILE:**  
 HORIZONTAL: 1"=50'  
 VERTICAL: 1"=50'



**Miller Engineers & Associates, Inc.**  
 Consulting Engineers & Land Surveyors  
 601 Main Street P.O. Box 223  
 Franklin, La. 70538

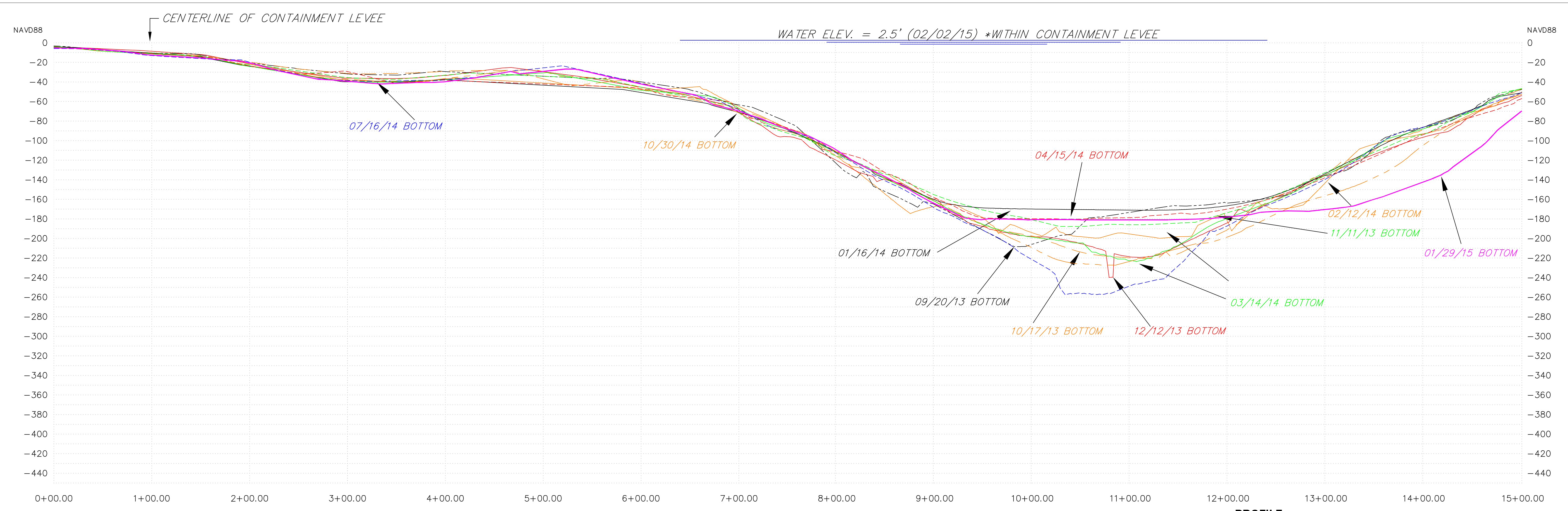
**JANUARY 2015**  
**PLAN & PROFILE**  
 TEXAS BRINE  
 BAYOU CORNE/GRAND BAYOU SINKHOLE

Drawn: M. J. Fore, PLS  
 Designed:  
 Approved:  
 Date: 10/04/2012  
 Project No: 13512  
 Scale: As Shown  
 Revised: 02/09/15  
 Sheet 2 of 3



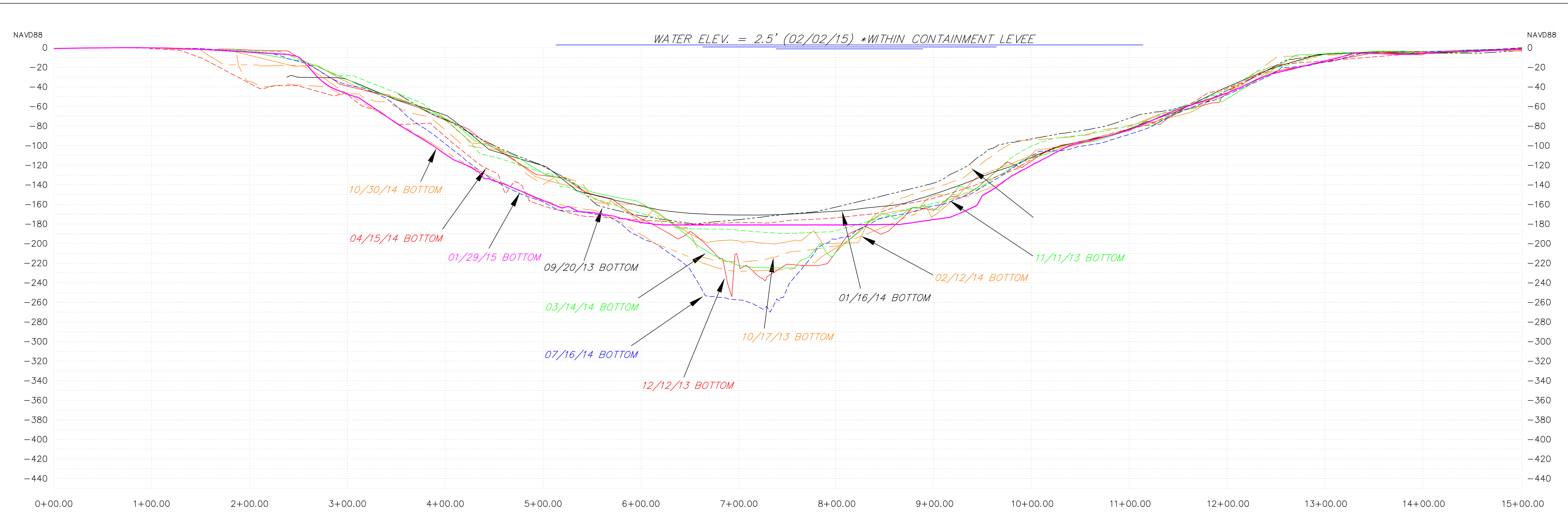


**Miller Engineers & Associates, Inc.**  
Consulting Engineers & Land Surveyors  
601 Main Street P.O. Box 223  
Franklin, La. 70538



**CROSS SECTION SSW-NNE**

**PROFILE:**  
HORIZONTAL: 1"=50'  
VERTICAL: 1"=50'



**CROSS SECTION SSE-NNW**

**PROFILE:**  
HORIZONTAL: 1"=50'  
VERTICAL: 1"=50'

**TEXAS BRINE**  
**BAYOU CORNE/GRAND BAYOU SINKHOLE**

**JANUARY 2015**  
**PLAN & PROFILE**

Drawn: M. J. Fore, PLS  
Designed:  
Approved:  
Date: 10/04/2012  
Project No: 13512  
Scale: As Shown  
Revised: 02/09/15  
Sheet 3 of 3