

INCIDENT ACTION PLAN

Be brief and concise with your entries

Location Bayou Corne Sink Hole	Control Level Company Supervisory	Operational Period From 5/29/13 To 5/30/13
---	--	--

<p>1.0 SITUATION Disease, community, environment</p> <p>PROMPTS: Weather, disease trends, Resources, Hazards & safety</p> <p>REFERENCE: Maps, weather reports, Sitreps, appreciation, warnings, alerts</p>	<p>CURRENT Partly cloudy</p> <hr/> <p>PREDICTION Scattered clouds and isolated thunderstorms. 30% chance of precipitation. High Temperature near 86.</p>
<p>2.0 OBJECTIVES (or MISSION)</p> <p>PROMPTS: Time & space</p> <p>REFERENCE: Appreciation – control options, courses open to disease</p>	<p>CURRENT</p> <p>Objective 1 - Demonstrating sinkhole containment and determining if additional sinkholes could form.</p> <p>Objective 2 - Locating and mitigating the risk posed by the presence of shallow gas.</p> <p>Objective 3 - Confirming the broader stability of the Napoleonville Salt Dome.</p> <p>Current Actions: (For planning purposes only, all activities are subject to change.)</p> <p><u>Geophone #1 Well</u> - Topped off cement and waiting on cement to dry - On yesterday Rigged up casing tools and ran 22 joints of 10-3/4" casing to 905'RKB then rigged down; rigged up Halliburton, tested lines to 3000psi, and mixed and pumped mud flush with premium cement plus other additives; Dropped top plug and displaced casing with freshwater, and tested to 500 psi. There was no cement returned to surface.</p> <p><u>ORW Wells/ROI Wells</u> - Rehab ORW-7</p> <p><u>CPT Well</u> - Begin CPT 8 (LA-15 on Oxy property)</p> <p><u>Containment Berm/Roads/Sinkhole</u> - Continue placement of GCL/Geotextile/clay on west berm extension - Place mats at BC-2, ORW-7, and LA-15 (Oxy property) - Install the 3rd of 3 geotechnical borings on the west berm extension</p> <p><u>MRAA Sampling Event</u> - Water (dissolved gas) sampling at: GP-ORW-17, GP-BS-20, GP- BS-35.</p>

	<p><u>Expected Actions (Next 24 Hours):</u></p> <ul style="list-style-type: none"> -CPT 9 at BC-2. -Continue placement of GCL/geotechnical/clay on west berm extension -Raise grade of west end of south berm with clay <p>Sinkhole Activity – Code 3</p>
<p>3.0 EXECUTION add safety information as appropriate</p>	
<p>GENERAL OUTLINE</p> <p>PROMPTS: Strategies & tactics (current/proposed/alternate)</p> <p>REFERENCE: Appreciation, Control Options</p>	<p>Safety Information: See Attached Safe Work Rules Reference IAP dated 8/9/12</p> <p>Additional to our Safe Work Rules for this project we are adding the awareness of insects, reptiles and animals.</p> <p>Inspect location for flammability</p> <p>Daily Safety Meetings</p> <p>PPE Required on site: Respirator w/ VOC Cartridge, Gloves for sampling, eye protection, life preservers, hearing protection.</p>
<p>GROUPINGS</p>	<p>NA</p>
<p>TASKS Including PR & Media</p>	<p>Same as above</p>
<p>COORDINATING INSTRUCTIONS</p> <p>PROMPTS: Timings, routes, assembly areas, staging areas</p>	<p>Texas Brine Grand Bayou Facility will be used as staging area.</p>
<p>4.0 ADMINISTRATION (Logistics support)</p> <p>PROMPTS: Unit names, locations, contact names, phone no's, timings, duties/tasks, routes, suppliers, quantities, status (required, organised, stand by, enroute)</p>	
<p>SUPPLY WHO, WHAT, WHERE, WHEN of resources not readily available</p>	<p>NA</p>

GROUND SUPPORT Transport of personnel, traffic mgt, refuelling, mechanical repair/maintenance	NA
COMMUNICATIONS Installation, maintenance, technical advice	Cell Phone & Landline Communications: Kenneth Blanchard – Area Manager – (██████████) (██████████) kblanchard@texasbrine.com Scott Borne – Facility Manager – (██████████) (██████████) sborne@texasbrine.com Joel Miller, PE – Consultant – (██████████) (██████████) joel.miller@cox-internet.com Bruce Martin – Operations/PR – (██████████) (██████████) bmartin@texasbrine.com Mark Cartwright – Technical/Engineering – (██████████) (██████████) mcartwright@unitedbrine.com Scott Whitelaw – Environmental/Safety – (██████████) (██████████) swhitelaw@tum.com
STAGING AREA/ FCP Setting up, communications, staffing	Texas Brine Grand Bayou Facility 1301 Hwy 70 South, Belle Rose, La 70341
5.0 ADMINISTRATION (Logistics services)	
PROMPTS: Unit names, locations, contact names, phone no's, timings, duties/tasks, routes, suppliers, quantities, status (required, organised, stand by, enroute)	
FACILITIES Security, waste, cleaning	NA
CATERING	NA
OH&S/MEDICAL Medical plan, first aid plan	Call 911
FINANCE	NA
TRAVEL	NA
INDUCTION/ TRAINING	NA
ACCOMMODATION	NA

6.0 CONTROL, COORDINATION & COMMUNICATION	
CONTROL & COORDINATION STRUCTURE REFERENCE Structural Chart	Plant Management Supervision / Contractor Work
COORDINATION & LIAISON Local knowledge, police, agency reps, emergency mgt reps	NA
COMMUNICATIONS PROMPTS Communications structure, operational comms plan, information mgt	Plant Management – Contractor Communication via Cell Phone

EXTRAS	
Attachments PROMPTS: maps, weather, organisational charts, resources, comms diagram	Current Weather Safe Work Rules
Plan developers PROMPTS PO, Logs Mgr, Controller	NA
Approval Controller, Ops Director	TBC Company Rep: William Booher FOSC: SOSC: POSC:

Belle Rose, Louisiana, United States

Today's Forecast: Wednesday, 29 May 2013



86°F
74°F

Sky Conditions: Isolated Thunderstorms
Sunrise: 6:04 AM **Sunset:** 7:59 PM
Wind: SE (132°) @ 14Mph
Precipitation Probability: 30%



[View your complete Local Weather »](#)

Extended Forecast [Full 10-Day Forecast »](#)

Thursday 30 May 2013	Friday 31 May 2013	Saturday 1 Jun 2013	Sunday 2 Jun 2013
			
Isolated Thunderstorms	Isolated Thunderstorms	Isolated Thunderstorms	Isolated Thunderstorms
86°F 75°F	86°F 75°F	86°F 74°F	88°F 73°F

Detailed Forecast

Today:

Some clouds and possibly an isolated thunderstorm in the afternoon. High 86F. Winds SE at 10 to 20 mph. Chance of rain 30%.

Tonight:

Considerable cloudiness. Chance of a shower or thunderstorm through the evening. Low 74F. Winds ESE at 10 to 15 mph.

Tomorrow:

Partly cloudy with a stray thunderstorm. Highs in the mid 80s and lows in the mid 70s.

May 28, 2013

Mr. Bruce Martin
Vice President of Operations
Texas Brine Company, LLC
4800 San Felipe
Houston, TX 77056

Dear Mr. Martin:

RE: In-Place Inclinometer, Tiltmeter, and Water-Level Monitoring System, Napoleonville Dome Weekly Report: May 18, 2013, Through May 24, 2013

RESPEC is pleased to submit this weekly report on the in-place inclinometer (IPI), tiltmeter, and water-level monitoring system installed around the sinkhole located near the western flank of the Napoleonville Dome, Assumption Parish, Louisiana. Water-level data in this report and the attached Excel file are submitted in response to Directive #5 contained in the October 11, 2012, Third Amendment to Declaration of Emergency and Directive from the Department of Natural Resources Office of Conservation. IPI and tiltmeter data are also attached as Excel files.

Monitoring locations are illustrated in Figure 1, and graphs that illustrate the tilt data, as recorded by each instrument, are provided in Figures 2 through 4. The IPI data for the *X*-directions and *Y*-directions are plotted separately in Figures 2 and 3, respectively. The tiltmeter data for both the *X*- and *Y*-directions are plotted in Figure 4. A condition reflecting no changes in ground movement plots as a horizontal line on these graphs. Note that the instruments installed are very sensitive; they can measure ground tilt to less than 1/1,000 of a degree. Inclinometer alarm levels are set at ± 1.0 degree and tiltmeter alarms are set at ± 0.5 degree.

This week, tilt readings from inclinometer IPI-3a indicate a fairly steady 0.05 degree movement toward the south (down from 0.14 degree last week). IPI-4 and IPI-5 became submerged and communication with the instruments was lost at 13:00 on May 10 because of a breach in the western berm after a heavy rainstorm. Instruments are still below water level and cannot be safely retrieved until water levels decrease. Figure 5 shows water-level temporal trends at the IPI-2 and Rig Access Road transducers. Figure 6 shows water-level temporal trends at the Pad 3 and Rig Access Road transducers. Water levels inside the berm dropped at least 0.15 foot this week, as measured by the IPI-2 transducer.

Sincerely,



Eric L. Krantz
Engineer

ELK:llf

Enclosure

cc: Mr. Mark Cartwright, Texas Brine Company, LLC
Mr. Scott Borne, Texas Brine Company, LLC
Project Central File 2153 — Category C

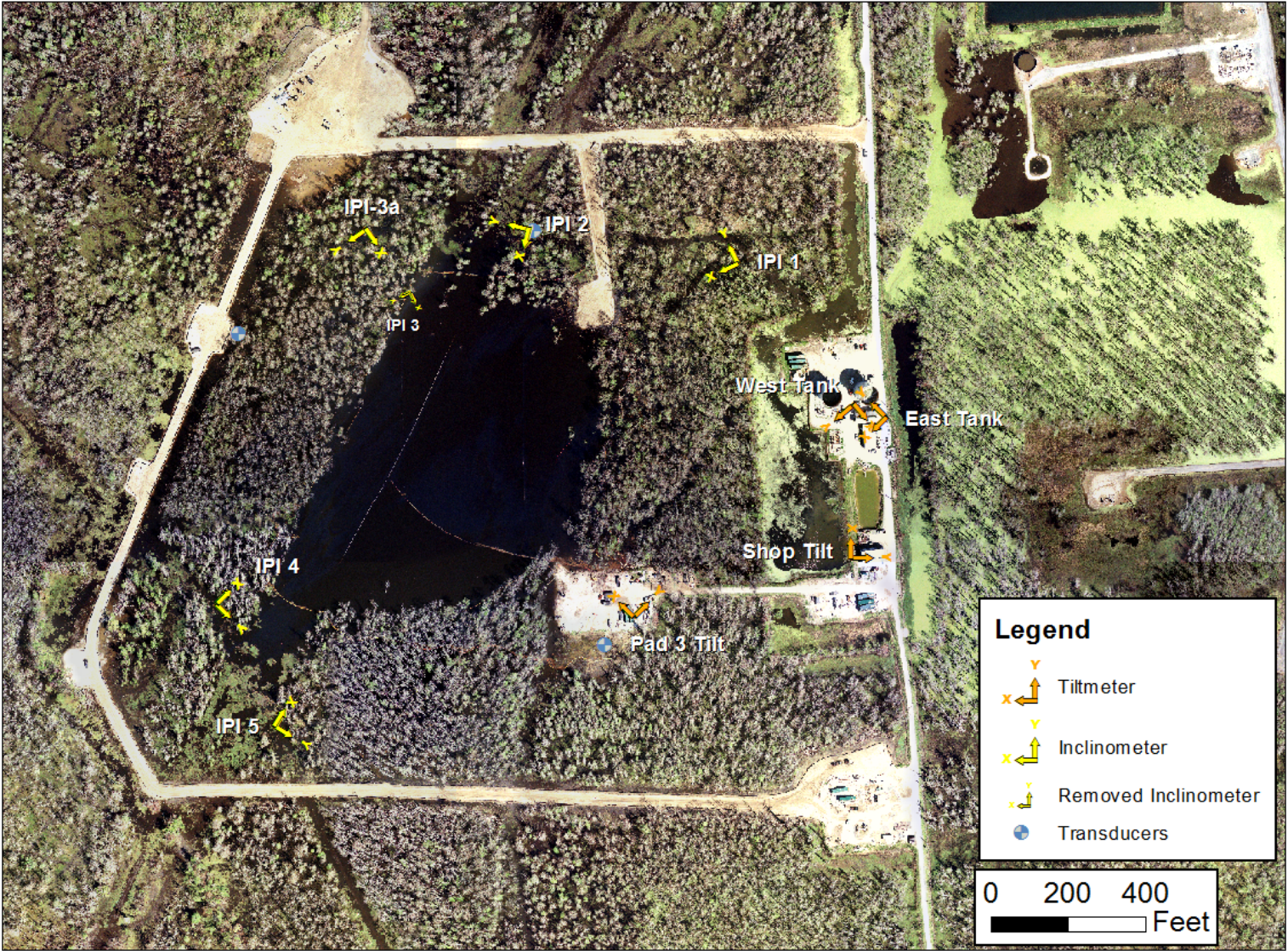


Figure 1. Monitoring Locations Showing the New Location of IPI-3a.

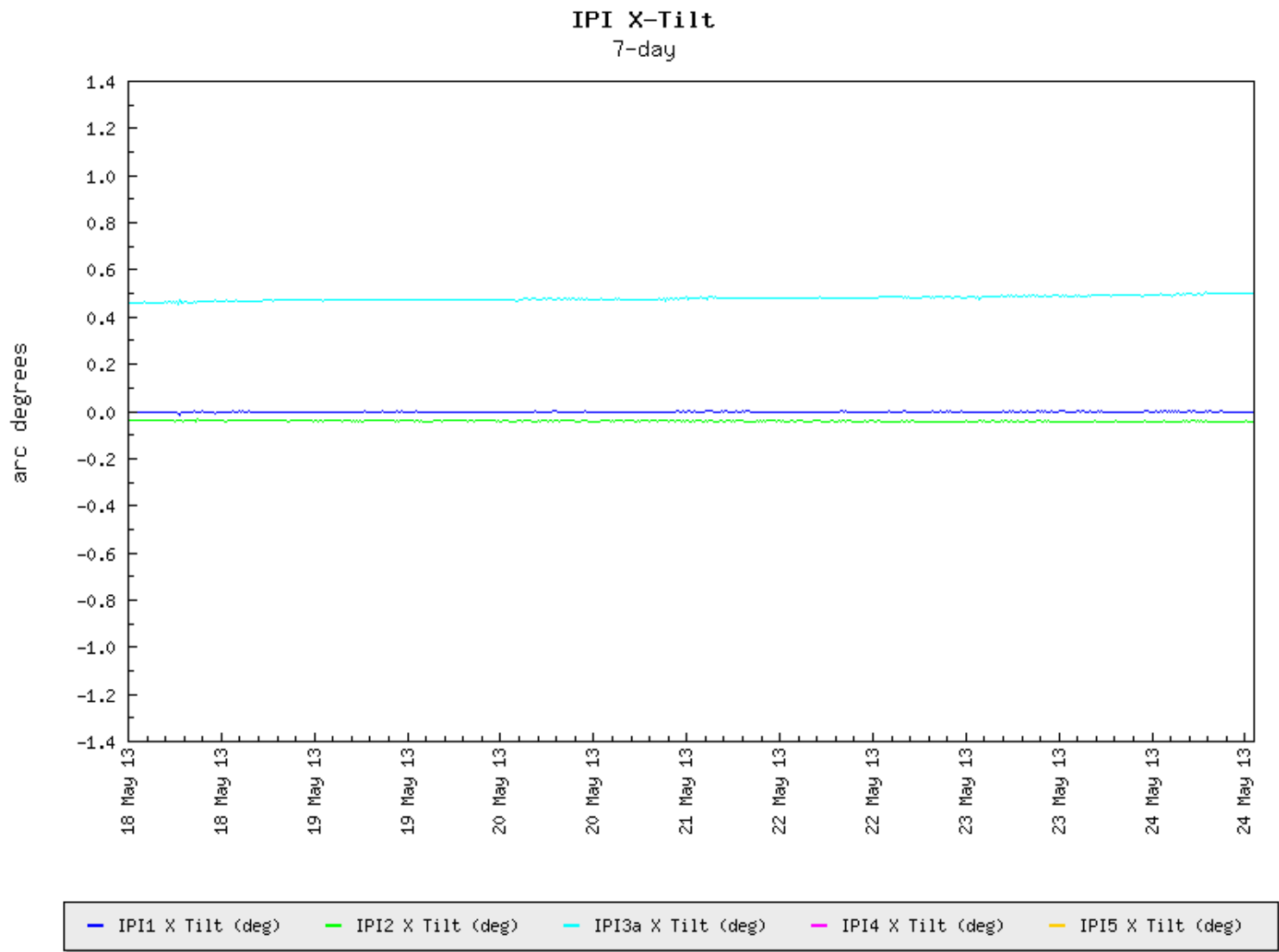


Figure 2. Inclinometer X-Direction Temporal Trends.

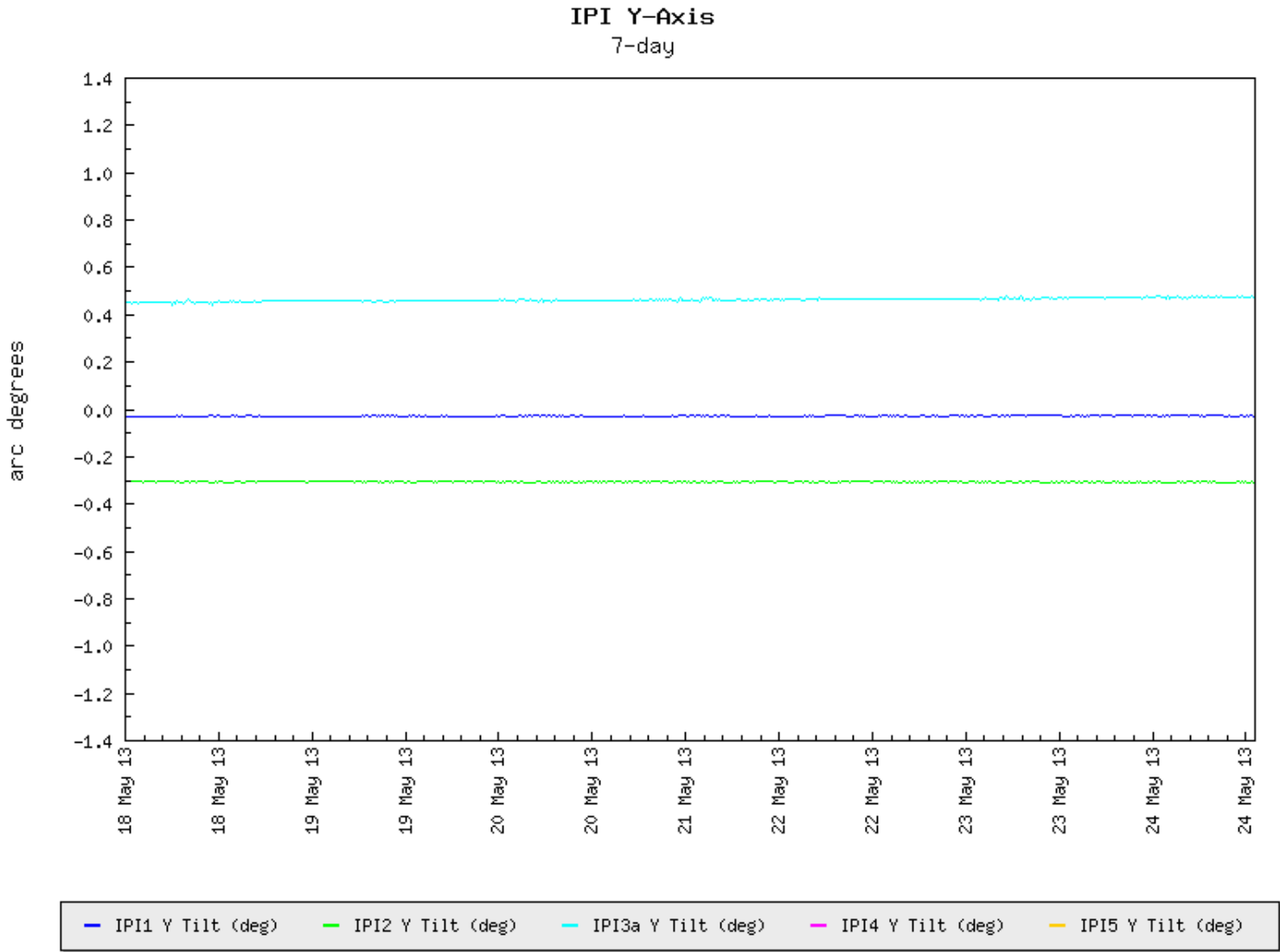


Figure 3. Inclinator Y-Direction Temporal Trends.

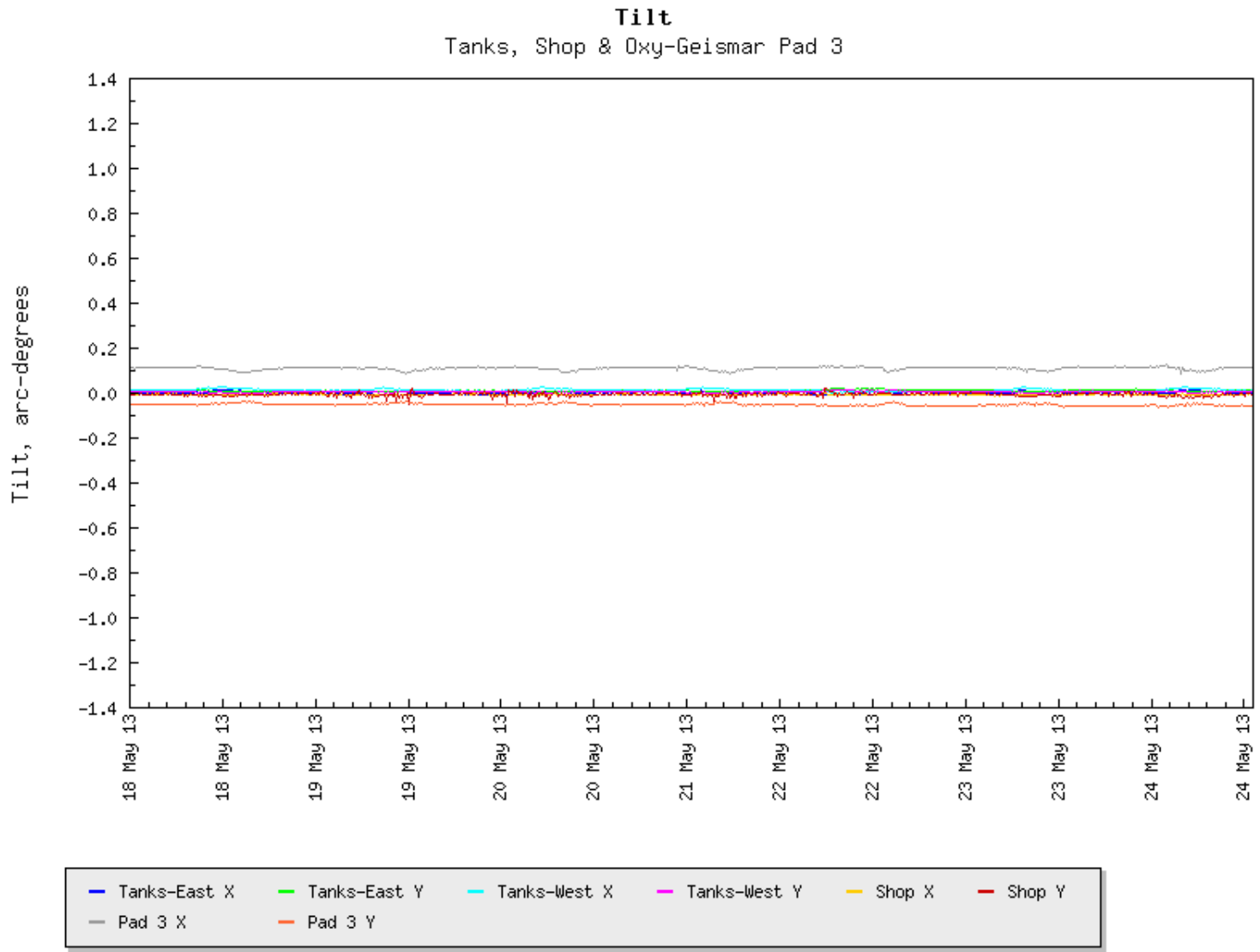


Figure 4. Tiltmeter Temporal Trends.

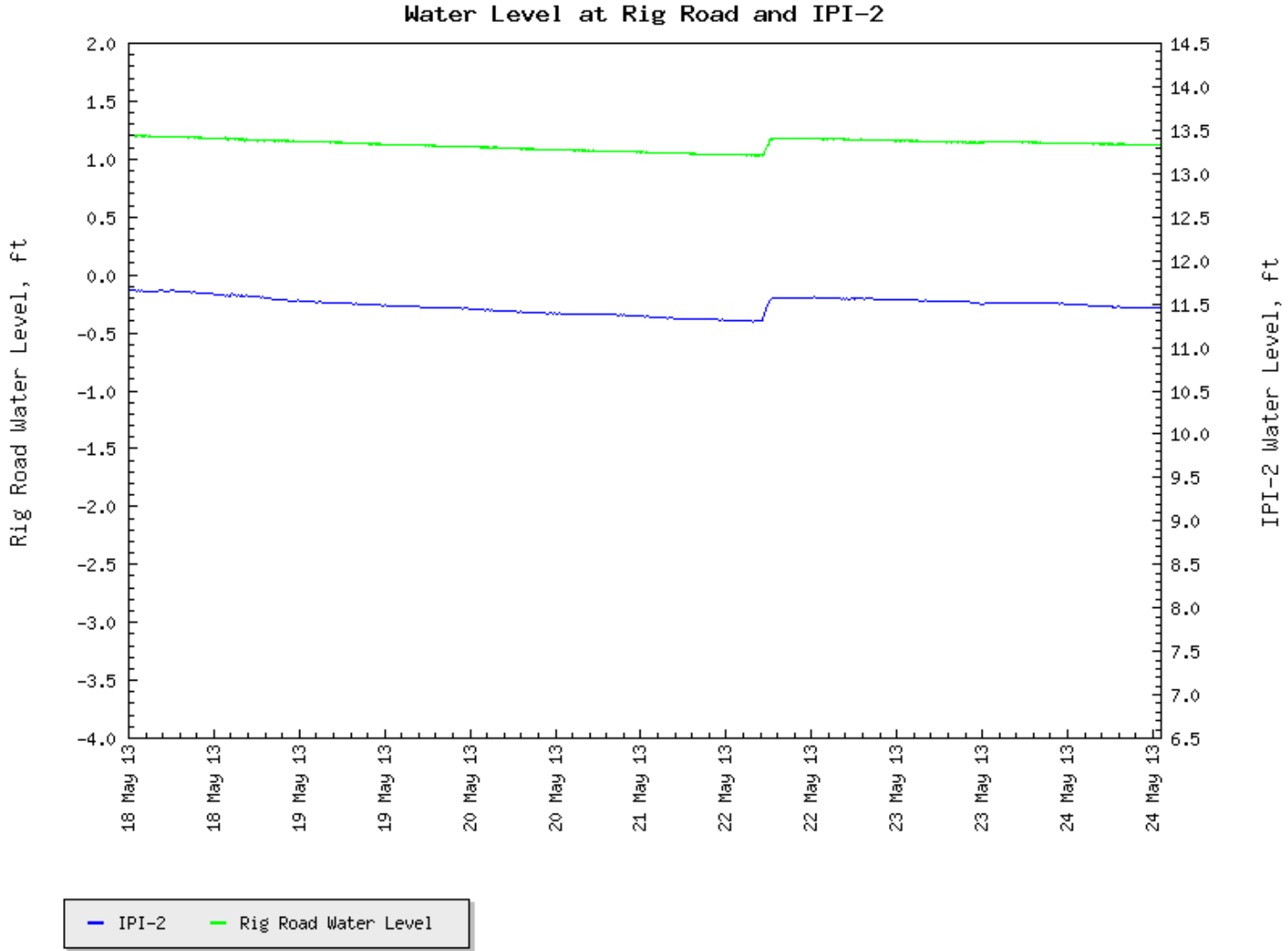


Figure 5. Water-Level Temporal Trends Showing Rig Access Road Data and IPI-2 Data.

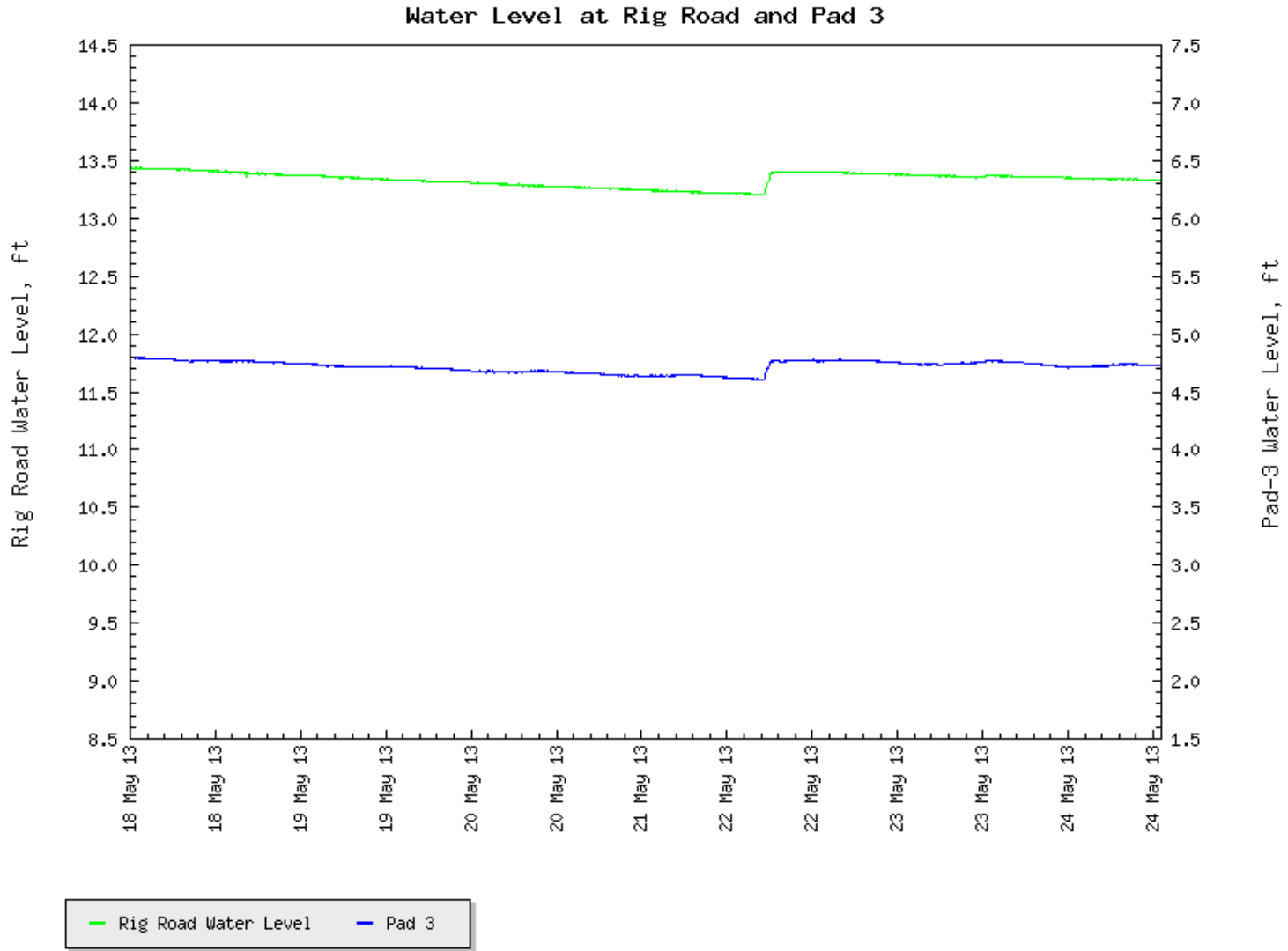


Figure 6. Water-Level Temporal Trends Showing Rig Access Road Data and Pad 3 Data.