

INCIDENT ACTION PLAN

Be brief and concise with your entries

Location Bayou Corne Sink Hole	Control Level Company Supervisory	Operational Period	
		From 8/25/12 07:00	To 8/26/12 17:00

1.0 SITUATION Disease, community, environment PROMPTS: Weather, disease trends, Resources, Hazards & safety REFERENCE: Maps, weather reports, Sitreps, appreciation, warnings, alerts	CURRENT Overcast @ 08:00 PREDICTED Isolated thunderstorms
2.0 OBJECTIVES (or MISSION) PROMPTS: Time & space REFERENCE: Appreciation – control options, courses open to disease	CURRENT Objective 1 - Gas Monitoring: 6 Gas Monitors have been set up in the field and are obtaining data on a continuous basis. (See Attached Map for Locations) The monitors are running on batteries which must be changed out every morning. Three monitors are located in the swamp and are required to be reached via airboats launched from TBC facilities. The continuous monitoring data is collected at an office trailer located at Texas Brine Grand Bayou Facility. Monitoring the information on a 24 hours basis. Monitoring is being recorded for LEL, VOC, H2S and O2. Sink hole observation map. See attached Elevation survey taking place Monday, Wednesday, and Friday.

	<div data-bbox="488 296 1469 470" style="border: 1px solid black; padding: 5px;">ALTERNATE</div>
3.0 EXECUTION add safety information as appropriate	
GENERAL OUTLINE PROMPTS: Strategies & tactics (current/proposed/alternate) REFERENCE: Appreciation, Control Options	Safety Information: See Attached Safe Work Rules Reference IAP dated 8/9/12 Additional to our Safe Work Rules for this project we are adding the awareness of insects, reptiles and animals. Inspect location for flammability Daily Safety Meetings PPE Required on site: Respirator w/ VOC Cartridge, Gloves for sampling, eye protection, life preservers, hearing protection.
GROUPINGS	NA
TASKS Including PR & Media	Same as above
COORDINATING INSTRUCTIONS PROMPTS: Timings, routes, assembly areas, staging areas	Texas Brine Grand Bayou Facility will be used as staging area.
4.0 ADMINISTRATION (Logistics support) PROMPTS: Unit names, locations, contact names, phone no's, timings, duties/tasks, routes, suppliers, quantities, status (required, organised, stand by, enroute)	

SUPPLY WHO, WHAT, WHERE, WHEN of resources not readily available	NA
GROUND SUPPORT Transport of personnel, traffic mgt, refuelling, mechanical repair/maintenance	NA
COMMUNICATIONS Installation, maintenance, technical advice	Cell Phone & Landline Communications: Kenneth Blanchard – Area Manager – 985- () (985-) kblanchard@texasbrine.com Scott Borne – Facility Manager – 985- () (985-) sborne@texasbrine.com Joel Miller, PE – Consultant – 337- () (337-) joel.miller@cox- internet.com Bruce Martin – Operations/PR – 713- () (281-) bmartin@texasbrine.com Mark Cartwright – Technical/Engineering – 713- () (281-) mcartwright@unitedbrine.com Scott Whitelaw – Environmental/Safety – 713- () (713-) swhitelaw@tum.com
STAGING AREA/ FCP Setting up, communications, staffing	Texas Brine Grand Bayou Facility 1301 Hwy 70 South, Belle Rose, La 70341
5.0 ADMINISTRATION (Logistics services) PROMPTS: Unit names, locations, contact names, phone no's, timings, duties/tasks, routes, suppliers, quantities, status (required, organised, stand by, enroute)	
FACILITIES Security, waste, cleaning	NA
CATERING	NA
OH&S/MEDICAL Medical plan, first aid plan	Call 911
FINANCE	NA
TRAVEL	NA
INDUCTION/	NA

TRAINING	
ACCOMMODATION	NA
6.0 CONTROL, COORDINATION & COMMUNICATION	
CONTROL & COORDINATION STRUCTURE <small>REFERENCE Structural Chart</small>	Plant Management Supervision / Contractor Work
COORDINATION & LIAISON <small>Local knowledge, police, agency reps, emergency mgt reps</small>	NA
COMMUNICATIONS <small>PROMPTS Communications structure, operational comms plan, information mgt</small>	Plant Management – Contractor Communication via Cell Phone

EXTRAS	
Attachments <small>PROMPTS: maps, weather, organisational charts, resources, comms diagram</small>	Site Map Current Weather Safe Work Rules Safety Training Log
Plan developers <small>PROMPTS PO, Logs Mgr, Controller</small>	NA
Approval <small>Controller, Ops Director</small>	TBC Company Rep: FOSC: SOSC: POSC:

INCIDENT BRIEFING

1. Incident Name

Grand Bayou Come Sink Hole

2. Date

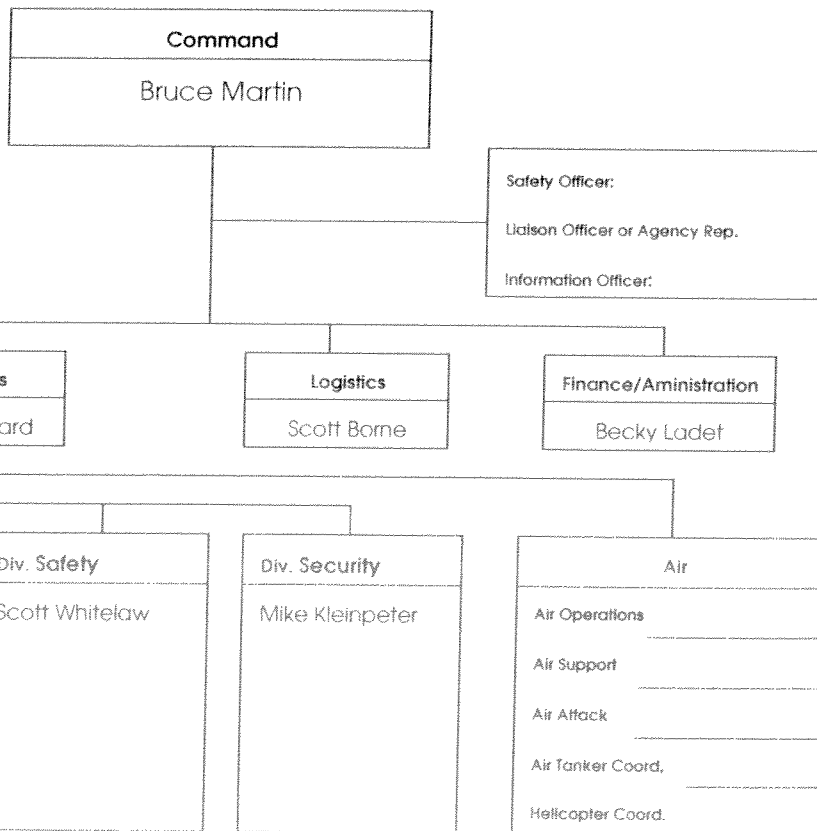
8/25/2012

3. Time

07:00-18:00

4. Map Sketch

5. Current Organization



6. Resources Summary

Resources Ordered	Resource Identification	ETA	On Scene	Location/Assignment

7. Summary of Current Actions

Continuous air monitoring around the sink hole.
Installation of inclinometer.

INCIDENT OBJECTIVES	1. Incident Name Bayou Corne Sink Hole	2. Date 8/25/12	3. Time 07:00
4. Operational Period 07:00 - 17:00 Every Day			
5. General Control Objectives for the Incident (include alternatives) Management Objectives Monitor air around sink hole for LEL, VOC, Oxygen, CO, and H2S Installation of inclinometer Surface water salinity monitoring Operational Objectives : Same as above			
6. Weather Forecast for Period			
7. General Safety Message			
8. Attachments (mark if attached)			
<input type="checkbox"/> Organization List - ICS 203 <input type="checkbox"/> Div. Assignment Lists - ICS 204 <input type="checkbox"/> Communications Plan - ICS 205	<input type="checkbox"/> Medical Plan - ICS 206 <input type="checkbox"/> Incident Map <input type="checkbox"/> Traffic Plan	<input type="checkbox"/> (Other)	
9. Prepared by (Planning Section Chief)		10. Approved by (Incident Commander)	

INCIDENT OBJECTIVES	1. Incident Name Bayou Corne Sink Hole	2. Date 8/25/12	3. Time 07:00
4. Operational Period 07:00 - 17:00 Every Day			
5. General Control Objectives for the Incident (include alternatives) Management Objectives Monitor air around sink hole for LEL, VOC, Oxygen, CO, and H2S Installation of inclinometer Surface water salinity monitoring Operational Objectives : Same as above			
6. Weather Forecast for Period			
7. General Safety Message			
8. Attachments (mark if attached)			
<input type="checkbox"/> Organization List - ICS 203 <input type="checkbox"/> Div. Assignment Lists - ICS 204 <input type="checkbox"/> Communications Plan - ICS 205	<input type="checkbox"/> Medical Plan - ICS 206 <input type="checkbox"/> Incident Map <input type="checkbox"/> Traffic Plan	<input type="checkbox"/> (Other) <input type="checkbox"/> <input type="checkbox"/>	
9. Prepared by (Planning Section Chief)	10. Approved by (Incident Commander)		

ORGANIZATION ASSIGNMENT LIST			
1. Incident Name		IS 203	
Bayou Corne Sink Hole		Operations Section	
2. Date		Op's Chief	
8/25/12		Deputy	
3. Time		a. Branch I	
06:00 - 18:00		Branch Director	
4. Operational Period		Deputy	
Everyday		Division/Group	
Position	Name	Division/Group	
5. Incident Commander and Command Staff			
Incident Commander	Mark Cartwright	Division/Group	
Deputy	Kenneth Blanchard	Division/Group	
Safety Officer	Scott Whitelaw	Division/Group	
Information Officer	Bruce Martin	Division/Group	
Liaison Officer	Scott Borne	Staging Area	
6. Agency Representative			
Agency	Name	b. Branch II	
		Branch Director	
		Deputy	
		Division/Group	
		Division/Group	
		Division/Group	
		Division/Group	
		Division/Group	
		Staging Area	
7. Planning/Intelligence Section			
Plans/Intel Chief		c. Branch III	
Deputy		Branch Director	
Resources Unit		Deputy	
Situation Unit		Division/Group	
Documentation Unit		Division/Group	
Demobilization Unit		Division/Group	
Technical Specialists		Division/Group	
Human Resources		Division/Group	
Training		d. Air Operations Branch	
GIS		Air Operations Branch Director	
		Air Tactical Supervisor	
		Air Support Supervisor	
		Helicopter Coordinator	
		Air Tanker Coordinator	
8. Logistics Section			
Logistics Chief		10. Finance/Administration Section	
Deputy		Finance/Admin. Chief	
Supply Unit		Deputy	
Facilities Unit		Time Unit	
Ground Support Unit		Procurement Unit	
Communications Unit		Compensation/Claims Unit	
Medical Unit		Cost Unit	
Food Unit			

MILLER ENGINEERS & ASSOCIATES, INC.
CONSULTING ENGINEERS & LAND SURVEYORS
FRANKLIN, LA.

OXY #5 MONUMENT

1" = 400'

NOTE:

PROPERTY & LEASE LINES ARE APPROXIMATE ONLY.
THIS SKETCH DOES NOT REPRESENT A PROPERTY
BOUNDARY SURVEY.

OXY #4 MONUMENT

APPROX. EDGE
OF SLURRY PIT
8/4/12

T.B.M. 6

TB
WATER SAMPLES

WELL 1

TANK "W"

TANK "E"

WATER WELL 1

T.B.M. 3A

T.B.M. 3C

WATER WELL 5

WATER WELL 2

WELL 3

T.B.M. 3

WELL 2

T.B.M. 2

T.B.M. 5

T.B.M. 3B

TBC LEASE LINE

WELL 9

GPS BASE

WELL 10

REFERENCE PT.

OXY GPS #4

T.B.M. 4

Bayou Corne Sinkhole

Date and Time:

3/24/12 - 8/25/12

Time

7:00 p.m.

Time

10:00 p.m.

Time

1:00 a.m.

Time

4:00 a.m.

Tree 1

OK

OK

OK

22

Tree 2

OK

OK

015

26

Tree 3

02

OK

OK

01

Tree 4

100

OK

OK

06

Tree 5

10

OK

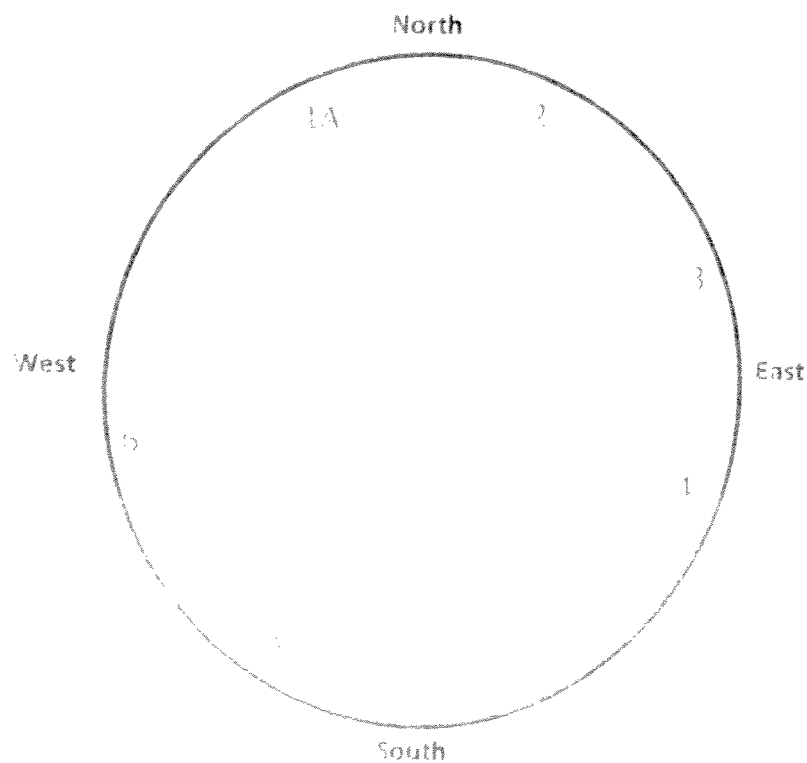
10

Tree 6

7

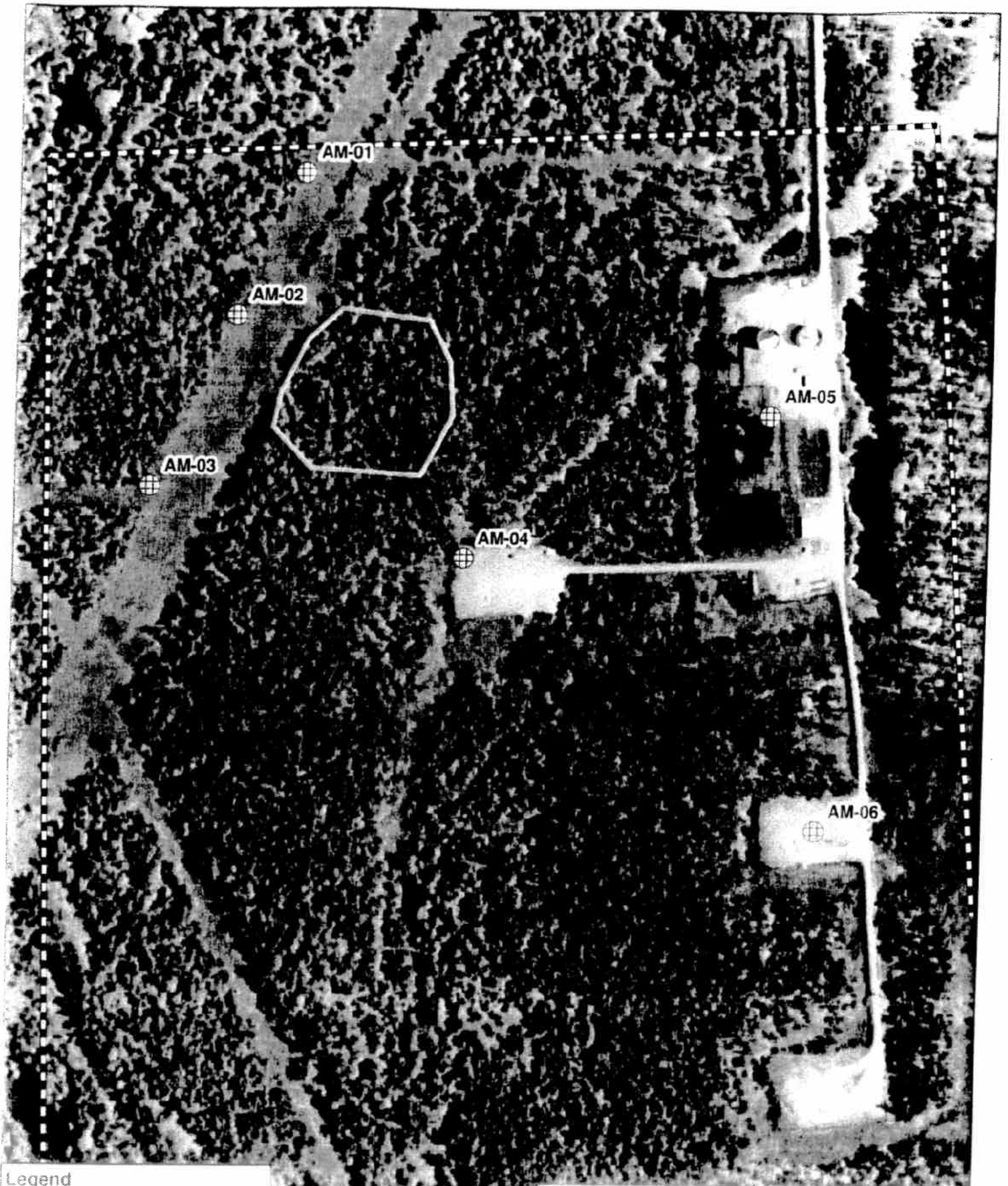
24

2



25.

11



Legend

- Air Monitoring Location (AM-01 to AM-06)
- Boundary Line
- Road
- Specific Site

Scale: 0 125 250 500 Feet

Texas Brine Air Monitoring Locations
8/17/2012 - current

TEXAS BRINE COMPANY, LLC AND AFFILIATED COMPANIES

Safe Work Practices

UNDERGROUND
STORAGE, LLC



UNITEDBRINE
RESOURCES, LLC

UNITEDBRINE

TEXAS BRINE COMPANY, LLC

U.S. DEPARTMENT OF
ENERGY, NUCLEAR
SERVICES, WASHINGTON, DC



RESPONSIBLE CARE

America in
Chemistry
United

73°F Belle Rose, Louisiana

Enter City, State, Country or U.S. Zip code or Airport Id


[Local](#) [National](#) [Global](#) [Storms](#) [Health](#) [Travel](#) [Community](#) [Forecast](#) [Current](#) [Radar](#) [Satellite](#) [wxMap](#) [iNav](#)

Weather Report

[Home](#) » [Local](#) » Weather Report

Belle Rose, Louisiana

[Weather Report](#) | [Interactive Weather Map](#) | [Extended Forecast](#) | [Hourly Forecast](#) | [Past Observations](#) | [Historic Averages](#) | [Related](#)

Current Conditions - °F | °C

As of 7:53 AM on Saturday 25 Aug 2012 (Local Time) from KBTR Reporting Station

Broken Clouds **73°F**
Feels Like: 73°

Wind Chill: 73° Ceiling: 10000
Heat Index: 73° Visibility: 10mi
Dew Point: 72° Wind: 5mph
Humidity: 96% Direction: 60° (ENE)
Pressure: 30.03" Gusts: NA

Report Text: KBTR 251253Z AUTO 06004KT 10SM BKN100
23/22 A3003 RMK AO2 SLP167 T02280222 TSNO

[View Detailed Observations for the last
48 Hours - 14 Days](#)

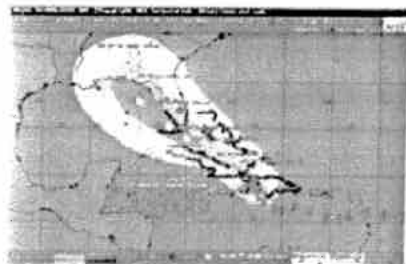
Today's Forecast

9 AM Iso T-Storms 79°
10 AM Iso T-Storms 83°
11 AM Iso T-Storms 85°

Local Information

No Weather Alerts
for this location[View Complete Hourly Forecast »](#)[Radar](#) · [Satellite](#) · [Surface Analysis](#)

Tropical Storm Tracking

Tropical Storm Isaac
ATLANTIC TRACK

Maps:

- » [Current Track](#)
- » [Visible Satellite](#)
- » [Infrared Satellite](#)

Bulletins:

- » [Advisory](#)
- » [Storm Log](#)

Additional Resources:

- » [Watches & Warnings](#)
- » [Severe Outlook Today](#)
- » [Severe Outlook Tomorrow](#)
- » [Lightning Strikes](#)
- » [Hurricane Season Summaries](#)

New Forecast Map Updates
Plan your seasonal activities better
[View the Detailed Extended Forecast »](#)


10 Day Forecast - °F | °C

[View the Detailed Extended Forecast »](#)

sat	sun	mon	tue	wed	thu	fri	sat	sun	mon
aug 25	aug 26	aug 27	aug 28	aug 29	aug 30	sep 01	sep 02	sep 03	sep 04
89° 73° 91°	72° 92°	74° 88°	75° 88°	73° 89°	74° 90°	74° 89°	74° 88°	74° 89°	73°

Details for Saturday, August 25

Scattered thunderstorms. High 89F. Winds ESE at 5 to 10 mph. Chance of rain 50%.

Evening: Scattered thunderstorms during the evening. Mainly clear skies after midnight. Low 73F. Winds E at 5 to 10 mph. Chance of rain 50%.

UV Index: 10 (Very High)

Relative Humidity: 69%

Precipitation: 50%

Snow: 0%

Cloud Coverage: 57%

Sunrise: 6:38 AM

Sunset: 7:34 PM

Moonrise: 2:54 PM

Moonset: 12:34 AM



Moonphase:

Waxing Gibbous

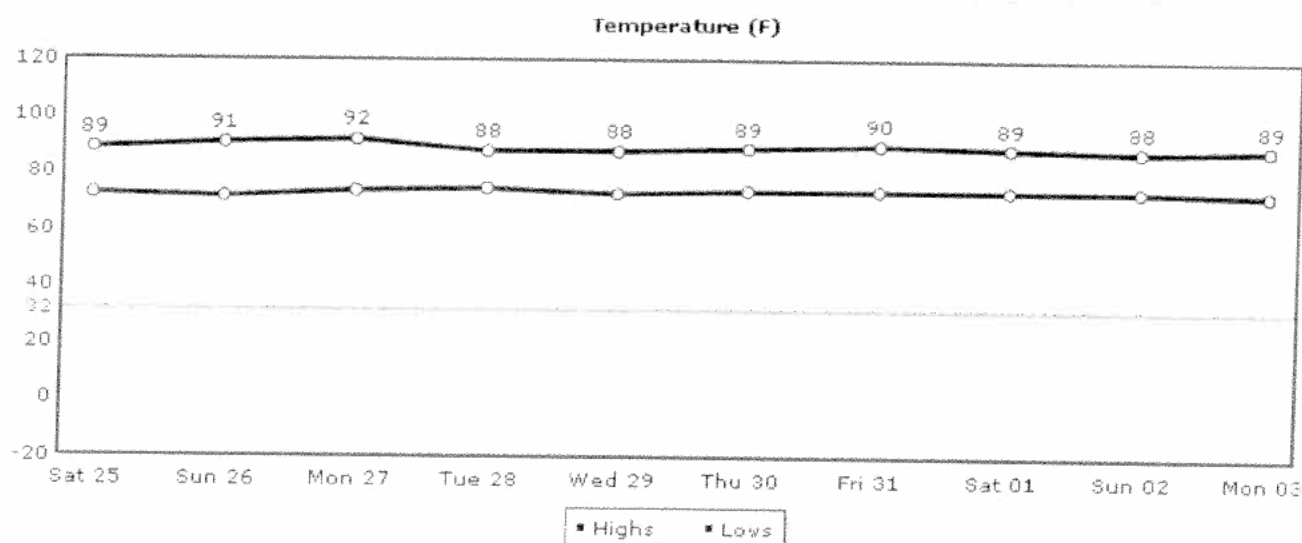


Direction: ESE (112°)

Speed: 10Mph(16Km, 8Kts)

Daily Forecast Chart

Chart Options: Temperature ▾



Temperature UV Index Relative Humidity Precipitation Snow Clouds Wind

Daily Forecast Hourly Forecast Past Observations Historic Averages

More from Intellicast



Check Out Our
Interactive Weather Map

Articles

- Local Weather Maps
- US Weather Maps
- US Current Weather
- Global Weather Maps
- Weather Analysis Charts
- Active Storm Track
- Weather Tools

Weather Center



Weather Alerts

Current National Weather Service Watches and Warnings by type and state throughout the United States.



Ski & Snow

The Ski & Snow Section is where you can get the latest ski resort conditions and snow forecasts.