

INCIDENT ACTION PLAN

Be brief and concise with your entries

Location Bayou Corne Sink Hole	Control Level Company Supervisory	Operational Period From 9/13/12 To 9/14/12
---	--	--

1.0 SITUATION Disease, community, environment PROMPTS: Weather, disease trends, Resources, Hazards & safety REFERENCE: Maps, weather reports, Sitreps, appreciation, warnings, alerts	CURRENT Sunny
	PREDICT Isolated Thunderstorms
2.0 OBJECTIVES (or MISSION) PROMPTS: Time & space REFERENCE: Appreciation – control options, courses open to disease	CURRENT Objective 1 - Gas Monitoring: 6 Gas Monitors have been set up in the field and are obtaining data on a continuous basis. (See Attached Map for Locations) The monitors are running on batteries which must be changed out every morning. Three monitors are located in the swamp and are required to be reached via airboats launched from TBC facilities. The continuous monitoring data is collected at an office trailer located at Texas Brine Grand Bayou Facility. Monitoring the information on a 24 hours basis. Monitoring is being recorded for LEL, VOC, H2S and O2. Objective 2 - Elevation survey taking place once a week. Objective 3- Sink hole observation map. See attached Objective 4- Installation of the five inclinometers and four tilt meters is complete. See attached Map for locations.
	ALTERNATE
3.0 EXECUTION add safety information as appropriate	
GENERAL OUTLINE PROMPTS: Strategies & tactics (current/proposed/alternate)	Safety Information: See Attached Safe Work Rules Reference IAP dated 8/9/12 Additional to our Safe Work Rules for this project we are adding the awareness of insects, reptiles and animals.

REFERENCE: Appreciation, Control Options	Inspect location for flammability Daily Safety Meetings PPE Required on site: Respirator w/ VOC Cartridge, Gloves for sampling, eye protection, life preservers, hearing protection.
GROUPINGS	NA
TASKS Including PR & Media	Same as above
COORDINATING INSTRUCTIONS PROMPTS: Timings, routes, assembly areas, staging areas	Texas Brine Grand Bayou Facility will be used as staging area.
4.0 ADMINISTRATION (Logistics support)	
PROMPTS: Unit names, locations, contact names, phone no's, timings, duties/tasks, routes, suppliers, quantities, status (required, organised, stand by, enroute)	
SUPPLY WHO, WHAT, WHERE, WHEN of resources not readily available	NA
GROUND SUPPORT Transport of personnel, traffic mgt, refuelling, mechanical repair/maintenance	NA
COMMUNICATIONS Installation, maintenance, technical advice	Cell Phone & Landline Communications: Kenneth Blanchard – Area Manager – 985- (985-) kblanchard@texasbrine.com Scott Borne – Facility Manager – 985- (985-) sborne@texasbrine.com Joel Miller, PE – Consultant – 337- (337-) joel.miller@cox-internet.com Bruce Martin – Operations/PR – 713- (281-) bmartin@texasbrine.com Mark Cartwright – Technical/Engineering – 713- (281-)

	mcartwright@unitedbrine.com Scott Whitelaw – Environmental/Safety – 713- () (713-) swhitelaw@tum.com
STAGING AREA/ FCP Setting up, communications, staffing	Texas Brine Grand Bayou Facility 1301 Hwy 70 South, Belle Rose, La 70341
5.0 ADMINISTRATION (Logistics services)	
PROMPTS: Unit names, locations, contact names, phone no's, timings, duties/tasks, routes, suppliers, quantities, status (required, organised, stand by, enroute)	
FACILITIES Security, waste, cleaning	NA
CATERING	NA
OH&S/MEDICAL Medical plan, first aid plan	Call 911
FINANCE	NA
TRAVEL	NA
INDUCTION/ TRAINING	NA
ACCOMMODATION	NA
6.0 CONTROL, COORDINATION & COMMUNICATION	
CONTROL & COORDINATION STRUCTURE REFERENCE Structural Chart	Plant Management Supervision / Contractor Work
COORDINATION &	NA

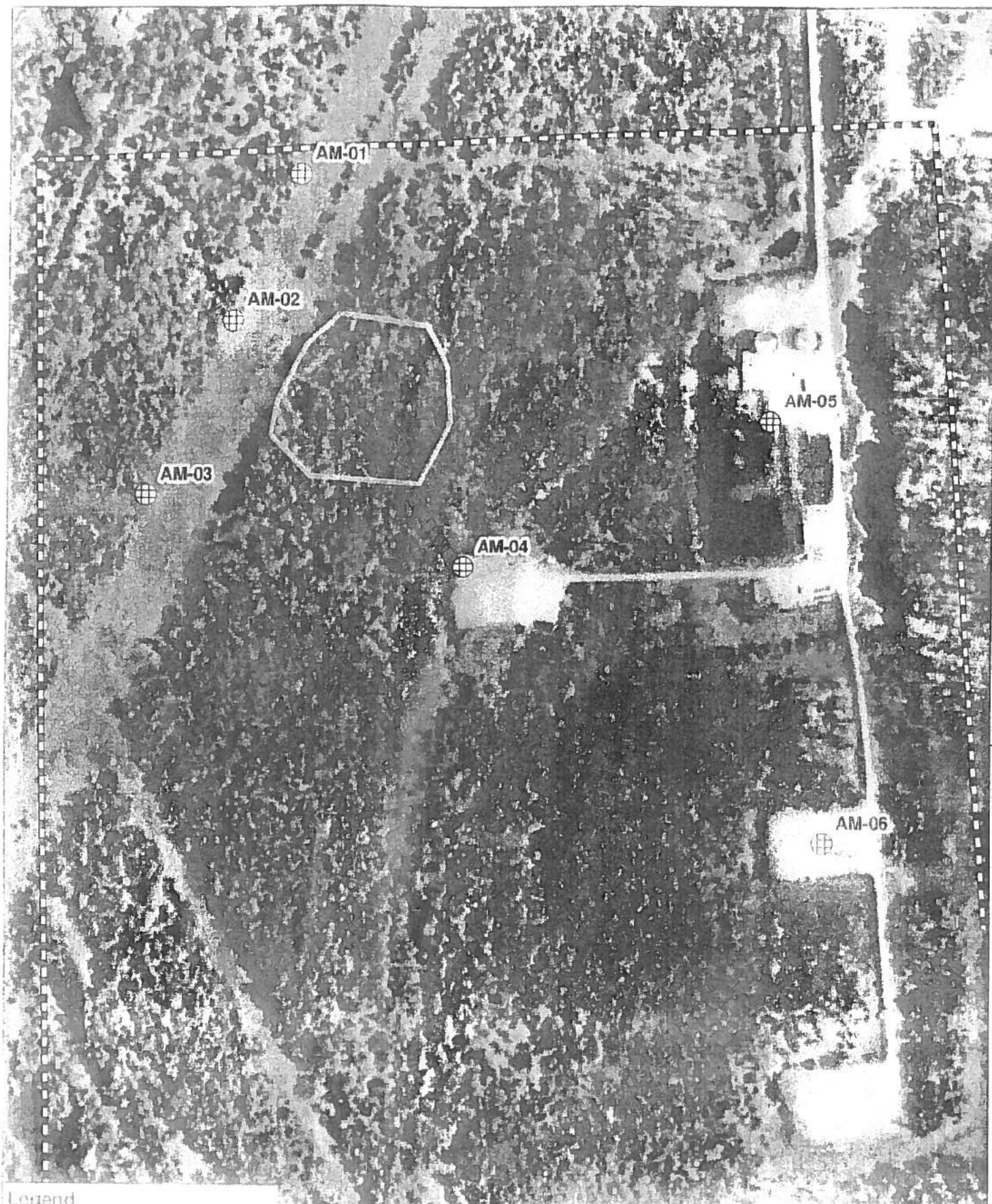
LIAISON Local knowledge, police, agency reps, emergency mgt reps	
COMMUNICATIONS PROMPTS Communications structure, operational comms plan, information mgt	Plant Management – Contractor Communication via Cell Phone

EXTRAS	
Attachments PROMPTS: maps, weather, organisational charts, resources, comms diagram	Site Map Current Weather Safe Work Rules
Plan developers PROMPTS PO, Logs Mgr, Controller	NA
Approval Controller, Ops Director	TBC Company Rep: <i>Scott Borne</i> FOSC: SOSC: POSC:



NOTE:
PROPERTY & LEASE LINES ARE APPROXIMATE ONLY.
THIS SKETCH DOES NOT REPRESENT A PROPERTY
BOUNDARY SURVEY.

MILLER ENGINEERS & ASSOCIATES, INC.
CONSULTING ENGINEERS & LAND SURVEYORS
FRANKLIN, LA.



Legend

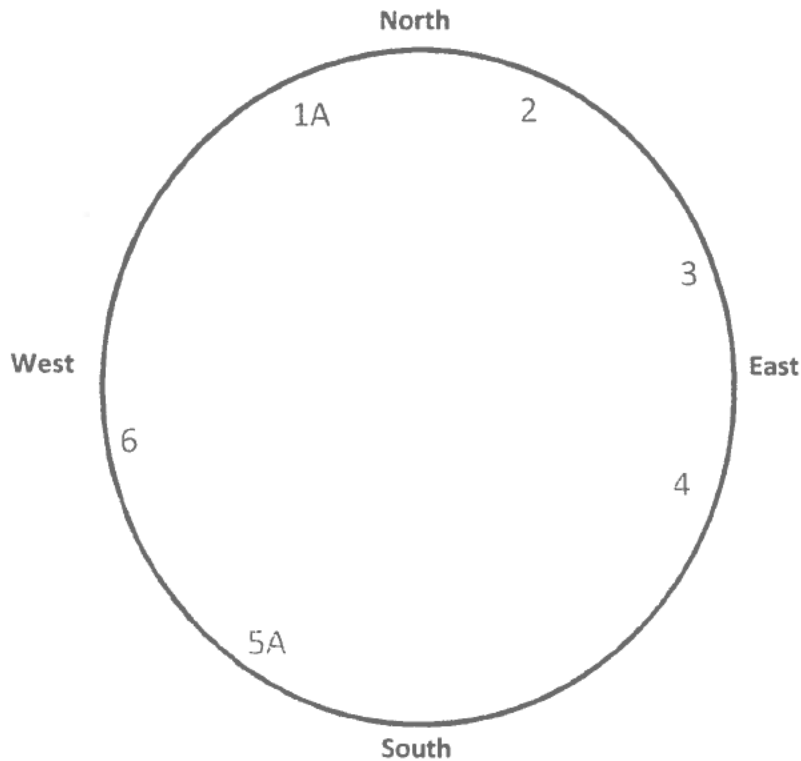
- Dashed Line
- Air Monitoring Location
- Solid Line

Figure 1. Air Monitoring Locations
 1/1/2012 - current

Bayou Corne Sinkhole

Date and Time: 9/12/12

	Time 7:00 p.m.	Time 10:00 p.m.	Time 1:00 a.m.	Time 4:00 a.m.
Tree 1		OK		
Tree 2		OK		
Tree 3		OK		
Tree 4		OK		
Tree 5		OK		
Tree 6		OK		



NOTE: Coordinates for each tree are forth coming.

By: Ashia Boudreau

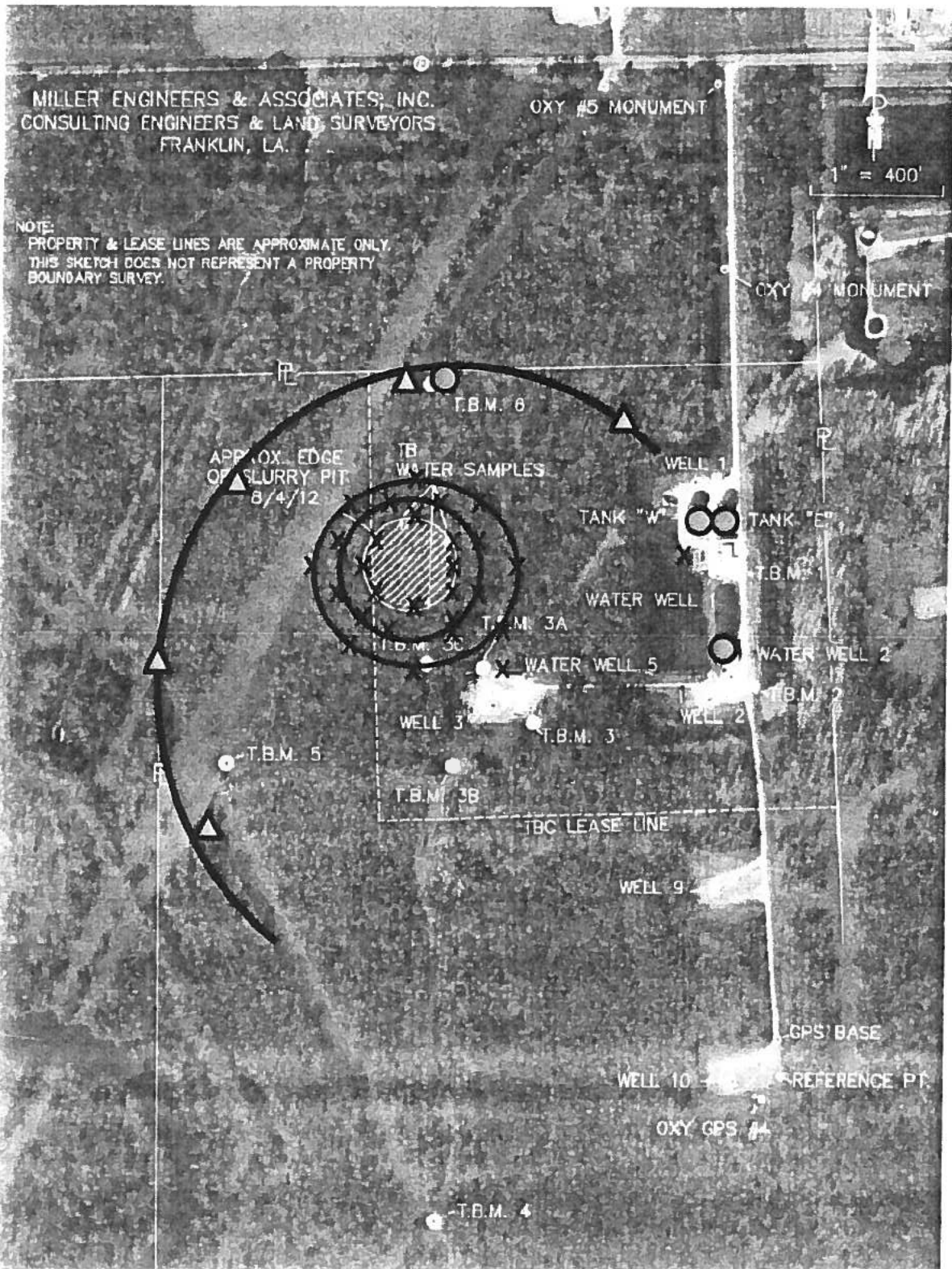
MILLER ENGINEERS & ASSOCIATES, INC.
CONSULTING ENGINEERS & LAND SURVEYORS
FRANKLIN, LA.

OXY #5 MONUMENT

1" = 400'

NOTE:
PROPERTY & LEASE LINES ARE APPROXIMATE ONLY.
THIS SKETCH DOES NOT REPRESENT A PROPERTY
BOUNDARY SURVEY.

OXY #4 MONUMENT



△ IPI Sites

○ Surface tiltmeter sites

TEXAS BRINE COMPANY, LLC AND AFFILIATED COMPANIES

Safe Work Practices

UNDERGROUND
STORAGE, LLC



UNITEDBRINE
PART OF THE AMERICAN CHEMISTRY COUNCIL

UNITEDBRINE
PART OF THE AMERICAN CHEMISTRY COUNCIL

TEXAS BRINE COMPANY, LLC

UNDERGROUND STORAGE
SERVICES, LLC



AMERICAN CHEMISTRY COUNCIL

American
Chemistry
Council

71°F

Belle Rose, Louisiana

Enter City, State, Country or U.S. Zip code or Airport Id

Local Weather

[Local](#) [National](#) [Global](#) [Storms](#) [Health](#) [Travel](#) [Community](#) [Forecast](#) [Current](#) [Radar](#) [Satellite](#) [wxMap](#) [iNav](#)

Weather Report

[Home](#) » [Local](#) » [Weather Report](#)

Belle Rose, Louisiana

[Weather Report](#) | [Interactive Weather Map](#) | [Extended Forecast](#) | [Hourly Forecast](#) | [Past Observations](#) | [Historic Averages](#) | [Related](#)

Current Conditions - °F | °C

As of 6:53 AM on Thursday 13 Sep 2012 (Local Time) from KBTR Reporting Station



Clear

71°F

Feels Like: 71°

Wind Chill: 71° Ceiling: Unl
 Heat Index: 71° Visibility: 8mi
 Dew Point: 70° Wind: 5mph
 Humidity: 96% Direction: 70° (ENE)
 Pressure: 30.12" Gusts: NA

Report Text: KBTR 131153Z AUTO 07004KT 8SM CLR 22/21
 A3012 RMK AO2 SLP197 T02170211 10233 20217 53007 TSNO

[View Detailed Observations for the last
48 Hours · 14 Days](#)

Today's Forecast

8 AM
Sunny

77°

9 AM
Sunny

80°

10 AM
Sunny

82°

Local Information

No Weather Alerts
for this location[View Complete Hourly Forecast »](#)
[Radar](#) · [Satellite](#) · [Surface Analysis](#)

Tropical Storm Tracking

Tropical Storm Kristy


[Current Track](#) | [Visible](#) | [Infrared](#)

Tropical Storm Nadine


[Current Track](#) | [Visible](#) | [Infrared](#)
[View Complete Tropical Storm Track List »](#)

New Forecast Map Updates
 Plan your seasonal activities better

[Click here to learn more...](#)

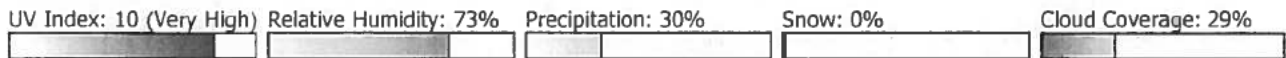
10 Day Forecast - °F | °C

[View the Detailed Extended Forecast »](#)

thu	fri	sat	sun	mon	tue	wed	thu	fri	sat
sep 13	sep 14	sep 15	sep 16	sep 17	sep 18	sep 19	sep 20	sep 21	sep 22
Iso T-Storms 88° 71°	Sunny 90° 70°	P Cloudy 89° 71°	Iso T-Storms 87° 71°	Sct T-Storms 86° 71°	Iso T-Storms 86° 69°	M Sunny 86° 67°	P Cloudy 86° 68°	P Cloudy 87° 69°	P Cloudy 86° 70°

Details for Thursday, September 13

Mostly sunny early with isolated thunderstorms developing this afternoon. High 88F. Winds E at 5 to 10 mph. Chance of rain 30%.
Evening: Isolated thunderstorms during the evening. Mainly clear skies after midnight. Low 71F. Winds light and variable. Chance of rain 30%.



Sunrise: 6:48 AM
Sunset: 7:11 PM

Moonrise: 4:17 AM
Moonset: 5:28 PM



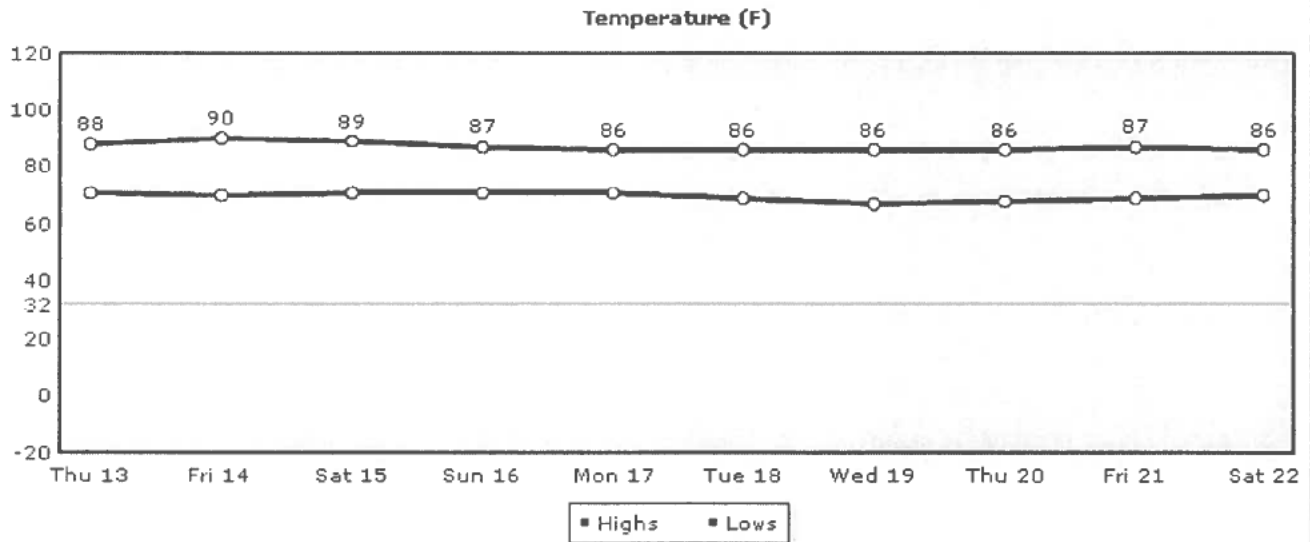
Moonphase:
Waning Crescent



Direction: E (83°)
Speed: 9Mph(14Km, 7Kts)

Daily Forecast Chart

Chart Options: Temperature ▾



Temperature UV Index Relative Humidity Precipitation Snow Clouds Wind

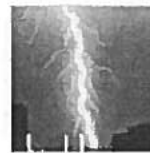
Daily Forecast Hourly Forecast Past Observations Historic Averages

More from Intellicast

Check Out Our
Interactive Weather Map

Articles

- Local Weather Maps
- US Weather Maps
- US Current Weather
- Global Weather Maps
- Weather Analysis Charts
- Active Storm Track
- Weather Tools

Weather Center**Weather Alerts**

Current National Weather Service Watches and Warnings by type and state throughout the United States.

**Ski & Snow**

The Ski & Snow Section is where you can get the latest ski resort conditions and snow forecasts.