

INCIDENT ACTION PLAN

Be brief and concise with your entries

Location Bayou Corne Sink Hole	Control Level Company Supervisory	Operational Period From 9/15/12 To 9/17/12
---	--	--

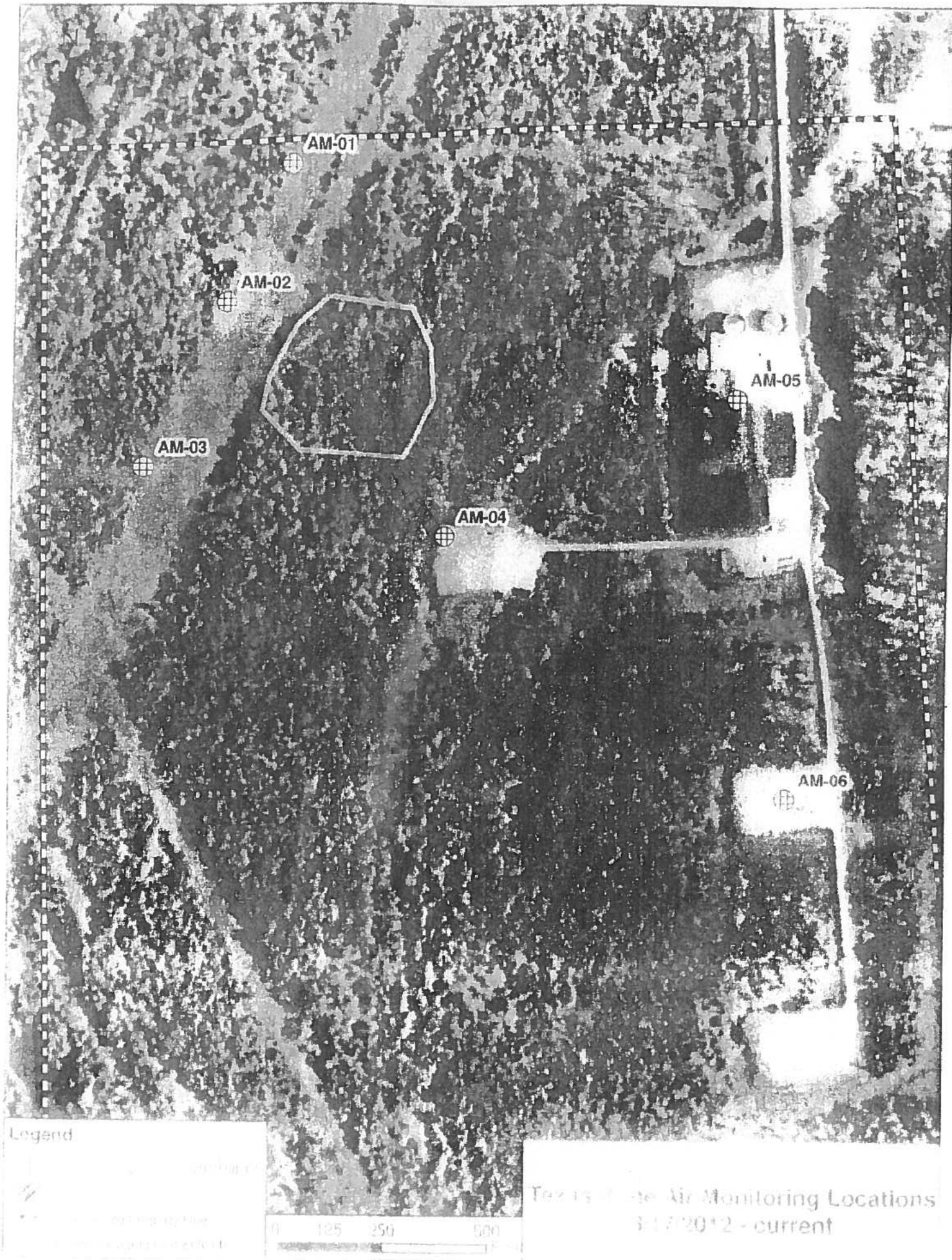
1.0 SITUATION Disease, community, environment PROMPTS: Weather, disease trends, Resources, Hazards & safety REFERENCE: Maps, weather reports, Sitreps, appreciation, warnings, alerts	CURRENT Sunny PREDICT Sunny
2.0 OBJECTIVES (or MISSION) PROMPTS: Time & space REFERENCE: Appreciation – control options, courses open to disease	CURRENT Objective 1 - Gas Monitoring: 6 Gas Monitors have been set up in the field and are obtaining data on a continuous basis. (See Attached Map for Locations) The monitors are running on batteries which must be changed out every morning. Three monitors are located in the swamp and are required to be reached via airboats launched from TBC facilities. The continuous monitoring data is collected at an office trailer located at Texas Brine Grand Bayou Facility. Monitoring the information on a 24 hours basis. Monitoring is being recorded for LEL, VOC, H2S and O2. Objective 2 - Elevation survey taking place once a week. Objective 3- Sink hole observation map. See attached. ALTERNATE
3.0 EXECUTION add safety information as appropriate	
GENERAL OUTLINE PROMPTS: Strategies & tactics (current/proposed/alternate) REFERENCE: Appreciation, Control Options	Safety Information: See Attached Safe Work Rules Reference IAP dated 8/9/12 Additional to our Safe Work Rules for this project we are adding the awareness of insects, reptiles and animals. Inspect location for flammability Daily Safety Meetings PPE Required on site: Respirator w/ VOC Cartridge, Gloves for

	sampling, eye protection, life preservers, hearing protection.
GROUPINGS	NA
TASKS Including PR & Media	Same as above
COORDINATING INSTRUCTIONS PROMPTS: Timings, routes, assembly areas, staging areas	Texas Brine Grand Bayou Facility will be used as staging area.
4.0 ADMINISTRATION (Logistics support) PROMPTS: Unit names, locations, contact names, phone no's, timings, duties/tasks, routes, suppliers, quantities, status (required, organised, stand by, enroute)	
SUPPLY WHO, WHAT, WHERE, WHEN of resources not readily available	NA
GROUND SUPPORT Transport of personnel, traffic mgt, refuelling, mechanical repair/maintenance	NA
COMMUNICATIONS Installation, maintenance, technical advice	Cell Phone & Landline Communications: Kenneth Blanchard – Area Manager – 985- (985-) kblanchard@texasbrine.com Scott Borne – Facility Manager – 985- (985-) sborne@texasbrine.com Joel Miller, PE – Consultant – 337- (337-) joel.miller@cox-internet.com Bruce Martin – Operations/PR – 713- (281-) bmartin@texasbrine.com Mark Cartwright – Technical/Engineering – 713- (281-) mcartwright@unitedbrine.com Scott Whitelaw – Environmental/Safety – 713- (713-) swhitelaw@tum.com

STAGING AREA/ FCP Setting up, communications, staffing	Texas Brine Grand Bayou Facility 1301 Hwy 70 South, Belle Rose, La 70341
5.0 ADMINISTRATION (Logistics services)	
PROMPTS: Unit names, locations, contact names, phone no's, timings, duties/tasks, routes, suppliers, quantities, status (required, organised, stand by, enroute)	
FACILITIES Security, waste, cleaning	NA
CATERING	NA
OH&S/MEDICAL Medical plan, first aid plan	Call 911
FINANCE	NA
TRAVEL	NA
INDUCTION/ TRAINING	NA
ACCOMMODATION	NA
6.0 CONTROL, COORDINATION & COMMUNICATION	
CONTROL & COORDINATION STRUCTURE REFERENCE Structural Chart	Plant Management Supervision / Contractor Work
COORDINATION & LIAISON Local knowledge, police, agency reps, emergency mgt reps	NA

<p>COMMUNICATIONS</p> <p>PROMPTS Communications structure, operational comms plan, information mgt</p>	<p>Plant Management – Contractor Communication via Cell Phone</p>
---	--

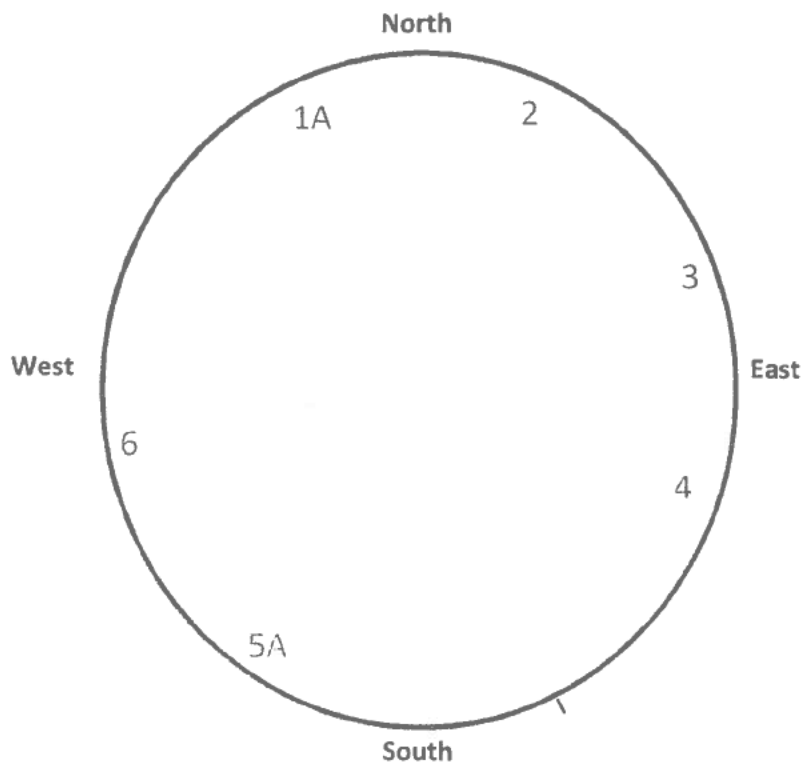
EXTRAS	
<p>Attachments</p> <p>PROMPTS: maps, weather, organisational charts, resources, comms diagram</p>	<p>Site Map Current Weather Safe Work Rules</p>
<p>Plan developers</p> <p>PROMPTS PO, Logs Mgr, Controller</p>	<p>NA</p>
<p>Approval</p> <p>Controller, Ops Director</p>	<p>TBC Company Rep: FOSC: SOSC: POSC:</p>



Bayou Corne Sinkhole

Date and Time: 9/14/12

	Time 7:00 p.m.	Time 10:00 p.m.	Time 1:00 a.m.	Time 4:00 a.m.
Tree 1		OK		
Tree 2		OK		
Tree 3		OK		
Tree 4		OK		
Tree 5		OK		
Tree 6		Don't See		



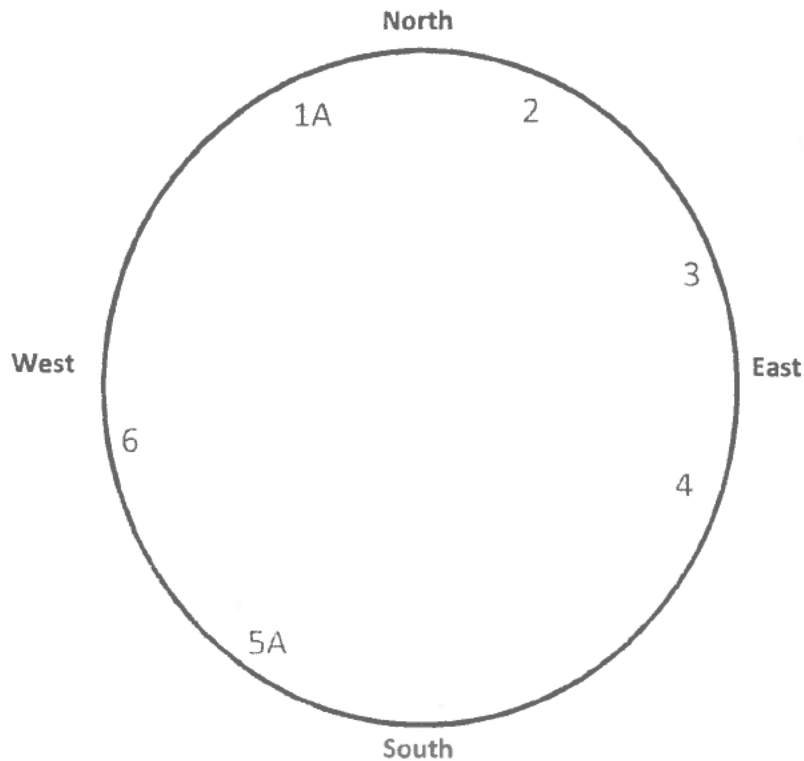
NOTE: Coordinates for each tree are forth coming.

By: Ashley Bedreany

Bayou Corne Sinkhole

Date and Time: 9/15/12

	Time	Time	Time	Time
	7:00 p.m.	10:00 p.m.	1:00 a.m.	4:00 a.m.
Tree 1		OK		
Tree 2		OK		
Tree 3		OK		
Tree 4		OK		
Tree 5		OK		
Tree 6		Don't See		



NOTE: Coordinates for each tree are forth coming.

By: Ashwa Barbours

TEXAS BRINE COMPANY, LLC AND AFFILIATED COMPANIES

Safe Work Practices

UNDERGROUND
STORAGE, LLC



UNITEDBRINE
PLASTIC TECHNOLOGY

UNITEDBRINE
PLASTIC TECHNOLOGY

TEXAS BRINE COMPANY, LLC

ENVIRONMENTAL
SERVICES MANAGEMENT, LLC



RESPONSIBLE CARE

American
Chemistry
Council

75°F Belle Rose, Louisiana

Enter City, State, Country or U.S. Zip code or Airport Id

Local Weather

[Local](#) [National](#) [Global](#) [Storms](#) [Health](#) [Travel](#) [Community](#) [Forecast](#) [Current](#) [Radar](#) [Satellite](#) [wxMap](#) [iNav](#)

Weather Report

[Home](#) » [Local](#) » [Weather Report](#)

Belle Rose, Louisiana

[Weather Report](#) | [Interactive Weather Map](#) | [Extended Forecast](#) | [Hourly Forecast](#) | [Past Observations](#) | [Historic Averages](#) | [Related](#) ▼

Current Conditions - °F | °C

As of 8:53 AM on Saturday 15 Sep 2012 (Local Time) from KBTR Reporting Station



Clear

75°F

Feels Like: 75°

Wind Chill: 75° Ceiling: Unl
 Heat Index: 75° Visibility: 10mi
 Dew Point: 67° Wind: 5mph
 Humidity: 76% Direction: 90° (E)
 Pressure: 30.14" Gusts: NA

Report Text: KBTR 151353Z AUTO 09004KT 10SM CLR 24/19
A3014 RMK AO2 SLP204 T02390194 TSNO \$

[View Detailed Observations for the last
48 Hours · 14 Days](#)

Today's Forecast

10 AM **82°**
M Sunny

11 AM **85°**
M Sunny

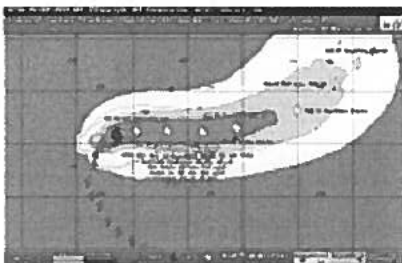
12 PM **87°**
M Sunny

Local Information

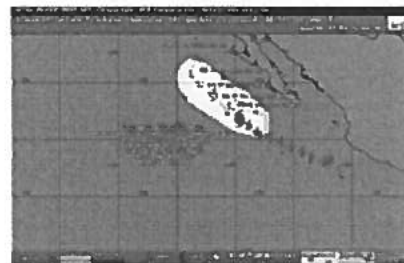
**No Weather Alerts
for this location**[View Complete Hourly Forecast »](#)[Radar](#) · [Satellite](#) · [Surface Analysis](#)

Tropical Storm Tracking

Hurricane Nadine

[Current Track](#) | [Visible](#) | [Infrared](#)

Tropical Storm Kristy

[Current Track](#) | [Visible](#) | [Infrared](#)[View Complete Tropical Storm Track List »](#)

New Forecast Map Updates
Plan your seasonal activities better

[Click here to learn more...](#)

10 Day Forecast - °F | °C

[View the Detailed Extended Forecast »](#)

sat	sun	mon	tue	wed	thu	fri	sat	sun	mon
sep 15	sep 16	sep 17	sep 18	sep 19	sep 20	sep 21	sep 22	sep 23	sep 24
M Sunny	Iso T-Storms	T-Storms	Iso T-Storms	Sunny	Sunny	Sunny	Sunny	Sunny	P Cloudy
90° 70°	89° 72°	83° 69°	86° 64°	82° 60°	84° 63°	86° 68°	87° 69°	87° 70°	87° 69°

Details for Saturday, September 15

Lots of sunshine. High around 90F. Winds NE at 5 to 10 mph.

Evening: Partly cloudy. Low around 70F. Winds light and variable.

UV Index: 10 (Very High)

Relative Humidity: 59%

Precipitation: 20%

Snow: 0%

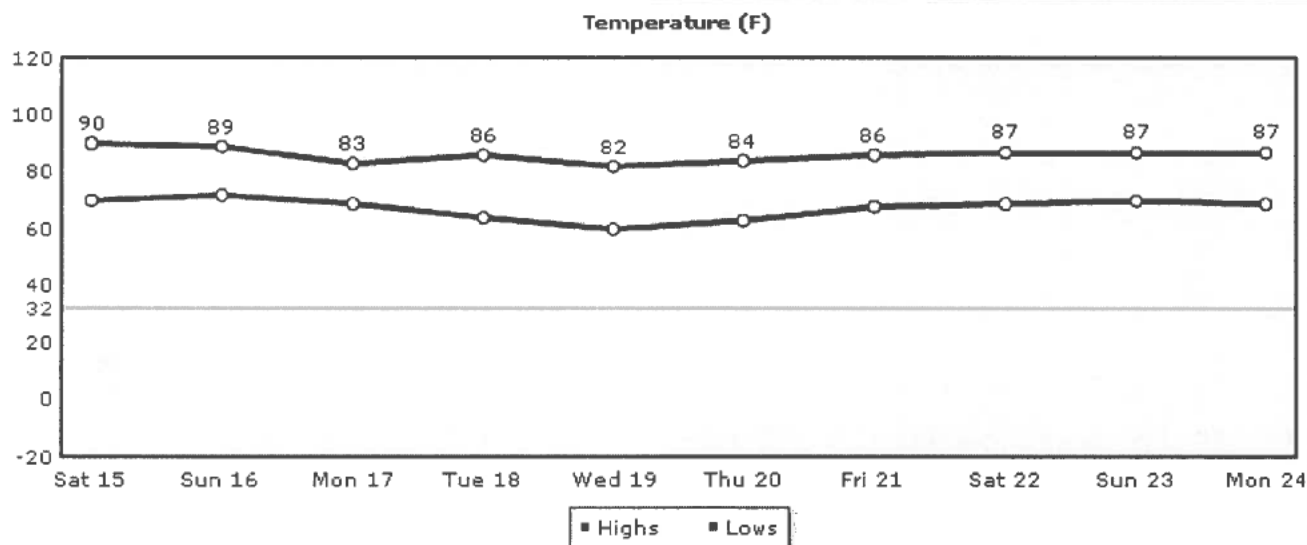
Cloud Coverage: 23%

Sunrise: 6:49 AM**Sunset:** 7:09 PM**Moonrise:** 6:19 AM**Moonset:** 6:43 PM**Moonphase:**

New

**Direction:** NE (56°)**Speed:** 8Mph(12Km, 6Kts)**Daily Forecast Chart**

Chart Options: Temperature ▾


[Temperature](#)
[UV Index](#)
[Relative Humidity](#)
[Precipitation](#)
[Snow](#)
[Clouds](#)
[Wind](#)
[Daily Forecast](#)
[Hourly Forecast](#)
[Past Observations](#)
[Historic Averages](#)
More from Intellicast

Check Out Our
Interactive Weather Map

Articles

- [Local Weather Maps](#)
- [US Weather Maps](#)
- [US Current Weather](#)
- [Global Weather Maps](#)
- [Weather Analysis Charts](#)
- [Active Storm Track](#)
- [Weather Tools](#)

Weather Center**Weather Alerts**

Current National Weather Service Watches and Warnings by type and state throughout the United States.

**Ski & Snow**

The Ski & Snow Section is where you can get the latest ski resort conditions and snow forecasts.

Intellicast.com: The Authority in Expert Weather

Your use of this site constitutes your acceptance of the Terms of Use and Privacy Policy

2012 WSI Corporation - v4.5.001:ICAST-WEB4