



Texas Brine Company, LLC

1301 Highway 70
Belle Rose, LA 70341
Phone: 985-369-6657
Fax: 985-369-7873



January 2, 2014

Commissioner James H. Welsh
P.O. Box 94275
Baton Rouge, LA 70804

RE: In response to State of Louisiana Department of Natural Resources Office of Conservation's Second Amendment to Declaration of Emergency and Directive

Commissioner Welsh,

In response to the Second Amendment and Declaration of Emergency and Directive order issued by the Louisiana Department of Natural Resources (LDNR), Office of Conservation on September 25, 2012, Texas Brine Company, LLC (TPC) understands the seven items listed in the document.

In the above mentioned, TBC was specifically directed and ordered to perform certain tasks outlined in the above mentioned document. Below are the required responses, as directed.

1. TBC's counsel provided LDNR legal counsel with a response to Directives 1-3 on September 28, 2012.
2. TBC understands Directive 4, which is to provide all daily logs and field notes from all contractors conducting investigation into subsidence and natural gas bubbling. The Daily Action Summary and results for current information can be found in the Attachment section of this report.
3. TBC understands Directive 5, which directs TBC to immediately allow for split or share any sample taken on site related to Well 3A (Serial Number 974265), the cavern, other wells facilities or other site locations. The Daily Action Summary of today's collection can be found in Attachment section of this report.
4. TBC understands Directive 6, which directs TBC to immediately report the results (final and preliminary) of any tests, logs samples or data collection performed on Well 3A, the cavern, other wells, facilities or site locations that indicate a change in any previously known conditions related to the investigation of the subsidence or natural gas bubbling

events, and continue to report any such results. The Daily Action Summary and the Results related to this Directive can be found in Attachment section of this report.

5. TBC understands the Directive 7, which states that TBC will provide a daily summary of all tests, or logs performed or samples taken from Well 3A and the cavern as well as any results of those tests or logs, including preliminary as of September 25, 2012 and going forward. The Daily Summary and Results related to this Directive can be found in Attachment section of this report.

Please note that the drilling rig used for the Observation Well 3A has been removed and the site is being rigged down and returned to pre-drilling condition. As such, daily drilling reports for this well have ceased. Plans are being made for longer term potential gas venting/flaring requirements and possible hydrocarbon material recover from Well 3A.

In addition, previous daily summary reports issued to LDNR have included significant duplicate information as there is a fair amount of overlap in the information requested in each of the Directives included in the September 25, 2012 order. All requested information associated with the Directives issued in the September 25, 2012 order are included in the Attachment section of this report.

TBC believes that the submittal of this report satisfies the requirements of the Declaration of Emergency and Directive issued on September 25, 2012. As directed this report is submitted by email to conservationorder@la.gov, ref. "Emergency Declaration-Texas Brine Company LLC-9/25/2012.



Bruce E. Martin

Vice President, Operations

Texas Brine Company, LLC

Summary Table for Daily Events

TBC Oxy Grand Bayou Data Management-Environmental									
Contractor	Responsibilities	Collected By	Date Collected	Delivered to Lab	Results from Lab	Laboratory	Method	Date to Agencies	
Sage	Stationary Air Monitoring	No Sage personnel onsite, Britt Barnett - 0:00 - 06:00; 18:00 - 24:00, Megan Tramonte - 06:00 - 18:00; No Sage personnel onsite, Britt Barnett - 0:00 - 06:00; 18:00 - 24:00, Megan Tramonte - 06:00 - 18:00	12/31/2013 - 1/1/14	NA	NA	NA	NA	1/1-1/2/2014	
	Residential Air Monitoring	Sage has been requested to suspend bimonthly residential air monitoring. Therefore, Sage will discontinue these activities.	NA	NA	NA	NA	NA	NA	
	Gas Seep Sampling	No work performed	12/31/2013 - 1/1/14	NA	NA	NA	NA	1/1-1/2/2014	
	Well Gas Sampling	Steve Shaughnessy GP-56 - 09:30	12/31/2013 - 1/1/14	N/A	Yes	SPL	LHG/S	1/1-1/2/2014	
	Under Slab Gas Sampling	No work performed	12/31/2013 - 1/1/14	NA	NA	NA	NA	1/1-1/2/2014	
	Indoor Air Monitoring	No work performed	12/31/2013 - 1/1/14	NA	NA	NA	NA	1/1-1/2/2014	
Respec	Inclinometers/Tilt Meters/Transducers	12/31/2013-1/1/14 No work Conducted	NA	NA	NA	NA	NA	NA	NA
	InSAR Reflector Installations	12/31/2013-1/1/14 No work Conducted	NA	NA	NA	NA	NA	NA	NA
	Subsidence Survey-Fenstermaker	12/31/2013-1/1/14 No work Conducted	NA	NA	NA	NA	NA	NA	NA
	Shallow Geophone Installation	12/31/2013-1/1/14 No work Conducted	NA	NA	NA	NA	NA	NA	NA
	Deep Geophone Installation	12/31/2013-1/1/14 No work Conducted	NA	NA	NA	NA	NA	NA	NA
	Amendment #3, Directive #2	12/31/2013-1/1/14 No work Conducted	NA	NA	NA	NA	NA	NA	NA
	Expansion of geoprobe gas sampling locations	12/31/2013-1/1/14 No work Conducted	NA	NA	NA	NA	NA	NA	NA
	DPVE	12/31/2013-1/1/14 No work Conducted	NA	NA	NA	NA	NA	NA	NA
	Abandon Casing Survey	12/31/2013-1/1/14 No work Conducted	NA	NA	NA	NA	NA	NA	NA
	Passive Vent Well at NSDBS56	12/31/2013-1/1/14 No work Conducted	NA	NA	NA	NA	NA	NA	NA
	MIHPT	12/31/2013-1/1/14 No work Conducted	NA	NA	NA	NA	NA	NA	NA
Miller	Weekly Stability Survey	NA	12/31/2013-1/1/14	NA	NA	NA	NA	NA	NA
	Misc. Survey Work	NA	12/31/2013-1/1/14	NA	NA	NA	NA	NA	NA
	Sinkhole Hydro/Perimeter Survey	NA	12/31/2013-1/1/14	NA	NA	NA	NA	NA	NA
Pisani	Surface Water	NA	12/31/2013-1/1/14	NA	NA	NA	NA	NA	NA
	Sinkhole	NA	12/31/2013-1/1/14	NA	NA	NA	NA	NA	NA
	Industrial Well Water	NA	12/31/2013-1/1/14	NA	NA	NA	NA	NA	NA
	MRAA Well Water	NA	12/31/2013-1/1/14	NA	NA	NA	NA	NA	NA
	GP/ORW Water	NA	12/31/2013-1/1/14	NA	NA	NA	NA	NA	NA
	Cavern Water	NA	12/31/2013-1/1/14	NA	NA	NA	NA	NA	NA
	Discharge/Outfall Water	NA	12/31/2013-1/1/14	NA	NA	NA	NA	NA	NA
	Geoprobe Wells	NA	12/31/2013-1/1/14	NA	NA	NA	NA	NA	NA
	Grand Bayou Well 3A								
Summary of Today's events									
Oxy 3A									
Daily Operations at 3A 1/2/2014	7:00am	985.08	12/31/2013						
	7:00am	988.13	1/1/2014						
	7:00am	994.69	1/2/2014						
Relief Well #1									
See ORW-01 Flare Spreadsheet (will be provided 1/2/14)									
1/2/2014									

Attachments

Daily Action Summary

January 1, 2014

Sinkhole Perimeter Air Monitoring and Neighborhood ORWs Air Monitoring

- No Sage personnel onsite.
- Code Red (monitor sub-contractor) onsite for continuous 24/7 monitoring:
 - Britt Barnett onsite from 0:00 to 06:00; 18:00 to 24:00
 - Megan Tramonte onsite from 06:00 to 18:00

Technicians also assisted in maintenance of the monitoring equipment as necessary.

NOTE: The following locations are now equipped with solar-powered weather boxes: Pad #9, TR-1a, ORW-11a, ORW-9a, ORW-5, and PVW-BS-56a. And, the following locations are equipped with electrical power: ORW-49-WH and ORW-50-WH. Thus, daily monitor change-out is no longer necessary. All monitors will continue to be calibrated and serviced as necessary.

RTU-8, located at ORW-9a, experienced a battery malfunction at approximately 02:17 on 01/01/2014. RTU-10 replaced RTU-8 at 09:53 on 01/01/2014, and normal data collection resumed.

Residential Air Monitoring

- Sage has been requested to suspend bimonthly residential air monitoring. Therefore, Sage will discontinue these activities. The last event was conducted on March 26, 2013.

Gas Seep Sampling

- Not Scheduled

Well Gas Sampling

- Not Scheduled

Under Slab Gas Sampling

- Not Scheduled

Air Indoor Monitoring

- Not Scheduled

Texas Brine - Belle Rose, Louisiana
Hourly Air Monitoring Data
Neighborhood Monitoring

*Time indicates start of time period (ex. 12:00:00 AM gives the time period 12:00:00 AM to 12:59:59 AM)

Date-Time *	Observation Relief Well -49 at the Well Head			Observation Relief Well - 50 at the Well Head			Passive Vent Well -56		
	ORW-49-WH			ORW-50-WH			PVW-BS-56a		
	H2S (ppm)	LEL (%)	O2 (%)	H2S (ppm)	LEL (%)	O2 (%)	H2S (ppm)	LEL (%)	O2 (%)
01/01/2014 01:00:00 AM	0.0	0.0	20.9	0.0	0.0	20.9	0.0	0.0	20.9
01/01/2014 02:00:00 AM	0.0	0.0	20.9	0.0	0.0	20.9	0.0	0.0	20.9
01/01/2014 03:00:00 AM	0.0	0.0	20.9	0.0	0.0	20.9	0.0	0.0	20.9
01/01/2014 04:00:00 AM	0.0	0.0	20.9	0.0	0.0	20.9	0.0	0.0	20.9
01/01/2014 05:00:00 AM	0.0	0.0	20.9	0.0	0.0	20.9	0.0	0.0	20.9
01/01/2014 06:00:00 AM	0.0	0.0	20.9	<1.0	0.0	20.9	0.0	0.0	20.9
01/01/2014 07:00:00 AM	0.0	0.0	20.9	0.0	0.0	20.9	0.0	0.0	20.9
01/01/2014 08:00:00 AM	0.0	0.0	20.9	<1.0	0.0	20.9	0.0	0.0	20.9
01/01/2014 09:00:00 AM	0.0	0.0	20.9	0.0	0.0	20.9	0.0	0.0	20.9
01/01/2014 10:00:00 AM	0.0	0.0	20.9	0.0	0.0	20.9	0.0	0.0	20.9
01/01/2014 11:00:00 AM	0.0	0.0	20.9	0.0	0.0	20.9	0.0	0.0	20.9
01/01/2014 12:00:00 PM	0.0	0.0	20.9	0.0	0.0	20.9	0.0	0.0	20.9
01/01/2014 01:00:00 PM	0.0	0.0	20.9	0.0	0.0	20.9	0.0	0.0	20.9
01/01/2014 02:00:00 PM	0.0	0.0	20.9	0.0	0.0	20.9	0.0	0.0	20.9
01/01/2014 03:00:00 PM	0.0	0.0	20.9	0.0	0.0	20.9	0.0	0.0	20.9
01/01/2014 04:00:00 PM	0.0	0.0	20.9	0.0	0.0	20.9	0.0	0.0	20.9
01/01/2014 05:00:00 PM	0.0	0.0	20.9	0.0	0.0	20.9	0.0	0.0	20.9
01/01/2014 06:00:00 PM	0.0	0.0	20.9	0.0	0.0	20.9	0.0	0.0	20.9
01/01/2014 07:00:00 PM	0.0	0.0	20.9	0.0	0.0	20.9	0.0	0.0	20.9
01/01/2014 08:00:00 PM	0.0	0.0	20.9	0.0	0.0	20.9	0.0	0.0	20.9
01/01/2014 09:00:00 PM	0.0	0.0	20.9	0.0	0.0	20.9	0.0	0.0	20.9
01/01/2014 10:00:00 PM	0.0	0.0	20.9	0.0	0.0	20.9	0.0	0.0	20.9
01/01/2014 11:00:00 PM	0.0	0.0	20.9	0.0	0.0	20.9	0.0	0.0	20.9
01/02/2014 12:00:00 AM	0.0	0.0	20.9	0.0	0.0	20.9	0.0	0.0	20.9

Notes:

Texas Brine - Belle Rose, Louisiana
Hourly Air Monitoring Data
Sinkhole Perimeter Monitoring

*Time indicates start of time period (ex. 12:00:00 AM gives the time period 12:00:00 AM to 12:59:59 AM)

Date-Time *	Observation Relief Well -5					Observation Relief Well -9					Observation Relief Well -11					South of OG3A-1					Onsite Trailers				
	ORW-5					ORW-9a					ORW-11a					Pad #9					TR-1a				
	CO (ppm)	Non-Methane VOC (ppm)	H2S (ppm)	LEL (%)	O2 (%)	CO (ppm)	Non-Methane VOC (ppm)	H2S (ppm)	LEL (%)	O2 (%)	CO (ppm)	Non-Methane VOC (ppm)	H2S (ppm)	LEL (%)	O2 (%)	SO2 (ppm)	Non-Methane VOC (ppm)	H2S (ppm)	LEL (%)	O2 (%)	CO (ppm)	Non-Methane VOC (ppm)	H2S (ppm)	LEL (%)	O2 (%)
01/01/2014 01:00:00 AM	<1.0	0.0	0.0	0.0	20.9	0.0	0.0	0.0	0.0	20.9	0.0	0.0	0.0	0.0	20.9	0.0	0.0	0.0	0.0	20.9	0.0	0.0	0.0	0.0	20.9
01/01/2014 02:00:00 AM	0.0	0.0	0.0	0.0	20.9	0.0	0.0	0.0	0.0	20.9	<1.0	0.0	0.0	0.0	20.9	0.0	0.0	0.0	0.0	20.9	0.0	0.0	0.0	0.0	20.9
01/01/2014 03:00:00 AM	0.0	0.0	0.0	0.0	20.9	Data not properly transmitted due to a battery malfunction					<1.0	0.0	0.0	0.0	20.9	0.0	0.0	0.0	0.0	20.9	0.0	0.0	0.0	0.0	20.9
01/01/2014 04:00:00 AM	0.0	0.0	0.0	0.0	20.9						<1.0	0.0	0.0	0.0	20.9	0.0	0.0	0.0	0.0	20.9	0.0	0.0	0.0	0.0	20.9
01/01/2014 05:00:00 AM	0.0	0.0	0.0	0.0	20.9						0.0	0.0	0.0	0.0	20.9	0.0	0.0	0.0	0.0	20.9	0.0	0.0	0.0	0.0	20.9
01/01/2014 06:00:00 AM	<1.0	0.0	0.0	0.0	20.9						<1.0	0.0	0.0	0.0	20.9	0.0	0.0	0.0	0.0	20.9	0.0	0.0	0.0	0.0	20.9
01/01/2014 07:00:00 AM	<1.0	0.0	0.0	0.0	20.9						0.0	0.0	0.0	0.0	20.9	0.0	0.0	0.0	0.0	20.9	0.0	0.0	0.0	0.0	20.9
01/01/2014 08:00:00 AM	<1.0	0.0	0.0	0.0	20.9						<1.0	0.0	0.0	0.0	20.9	0.0	0.0	0.0	0.0	20.9	0.0	0.0	0.0	0.0	20.9
01/01/2014 09:00:00 AM	0.0	0.0	0.0	0.0	20.9	0.0	0.0	0.0	0.0	20.9	0.0	0.0	0.0	0.0	20.9	0.0	0.0	0.0	0.0	20.9	0.0	0.0	0.0	0.0	20.9
01/01/2014 10:00:00 AM	0.0	0.0	0.0	0.0	20.9	0.0	0.0	0.0	0.0	20.9	<1.0	0.0	0.0	0.0	20.9	0.0	0.0	0.0	0.0	20.9	0.0	0.0	0.0	0.0	20.9
01/01/2014 11:00:00 AM	0.0	0.0	0.0	0.0	20.9	0.0	0.0	0.0	0.0	20.9	<1.0	0.0	0.0	0.0	20.9	0.0	0.0	0.0	0.0	20.9	0.0	0.0	0.0	0.0	20.9
01/01/2014 12:00:00 PM	0.0	0.0	0.0	0.0	20.9	0.0	0.0	0.0	0.0	20.9	<1.0	0.0	0.0	0.0	20.9	0.0	0.0	0.0	0.0	20.9	0.0	0.0	0.0	0.0	20.9
01/01/2014 01:00:00 PM	0.0	0.0	0.0	0.0	20.9	0.0	0.0	0.0	0.0	20.9	<1.0	0.0	0.0	0.0	20.9	0.0	0.0	0.0	0.0	20.9	0.0	0.0	0.0	0.0	20.9
01/01/2014 02:00:00 PM	0.0	0.0	0.0	0.0	20.9	<1.0	0.0	0.0	0.0	20.9	<1.0	<1.0	0.0	0.0	20.9	0.0	0.0	0.0	0.0	20.9	0.0	0.0	0.0	0.0	20.9
01/01/2014 03:00:00 PM	0.0	0.0	0.0	0.0	20.9	0.0	0.0	0.0	0.0	20.9	<1.0	<1.0	0.0	0.0	20.9	0.0	0.0	0.0	0.0	20.9	0.0	0.0	0.0	0.0	20.9
01/01/2014 04:00:00 PM	0.0	0.0	0.0	0.0	20.9	<1.0	0.0	0.0	0.0	20.9	<1.0	<1.0	0.0	0.0	20.9	0.0	0.0	0.0	0.0	20.9	0.0	0.0	0.0	0.0	20.9
01/01/2014 05:00:00 PM	0.0	0.0	0.0	0.0	20.9	0.0	0.0	0.0	0.0	20.9	<1.0	<1.0	0.0	0.0	20.9	0.0	0.0	0.0	0.0	20.9	0.0	0.0	0.0	0.0	20.9
01/01/2014 06:00:00 PM	0.0	0.0	0.0	0.0	20.9	0.0	0.0	0.0	0.0	20.9	<1.0	0.0	0.0	0.0	20.9	0.0	0.0	0.0	0.0	20.9	0.0	0.0	0.0	0.0	20.9
01/01/2014 07:00:00 PM	0.0	0.0	0.0	0.0	20.9	<1.0	0.0	0.0	0.0	20.9	<1.0	0.0	0.0	0.0	20.9	0.0	0.0	0.0	0.0	20.9	0.0	0.0	0.0	0.0	20.9
01/01/2014 08:00:00 PM	<1.0	0.0	0.0	0.0	20.9	0.0	0.0	0.0	0.0	20.9	<1.0	0.0	0.0	0.0	20.9	0.0	0.0	0.0	0.0	20.9	0.0	0.0	0.0	0.0	20.9
01/01/2014 09:00:00 PM	0.0	0.0	0.0	0.0	20.9	<1.0	0.0	0.0	0.0	20.9	<1.0	<1.0	0.0	0.0	20.9	0.0	0.0	0.0	0.0	20.9	0.0	0.0	0.0	0.0	20.9
01/01/2014 10:00:00 PM	0.0	0.0	0.0	0.0	20.9	0.0	0.0	0.0	0.0	20.9	<1.0	<1.0	0.0	0.0	20.9	0.0	0.0	0.0	0.0	20.9	0.0	0.0	0.0	0.0	20.9
01/01/2014 11:00:00 PM	0.0	0.0	0.0	0.0	20.9	<1.0	0.0	0.0	0.0	20.9	<1.0	<1.0	0.0	0.0	20.9	0.0	0.0	0.0	0.0	20.9	0.0	0.0	0.0	0.0	20.9
01/02/2014 12:00:00 AM	0.0	0.0	0.0	0.0	20.9	<1.0	0.0	0.0	0.0	20.9	<1.0	<1.0	0.0	0.0	20.9	0.0	0.0	0.0	0.0	20.9	0.0	0.0	0.0	0.0	20.9

Notes:

RTU-8, located at ORW-9a, experienced a battery malfunction at approximately 02:17 AM on 01/01/2014. RTU-10 replaced RTU-8 at 09:53 AM on 01/01/2014, and normal data collection resumed.

Texas Brine - Belle Rose, Louisiana
Hourly Air Monitoring Data
Neighborhood Monitoring

*Time indicates start of time period (ex. 12:00:00 AM gives the time period 12:00:00 AM to 12:59:59 AM)

Date-Time *	Observation Relief Well -49 at the Well Head			Observation Relief Well - 50 at the Well Head			Passive Vent Well -56		
	ORW-49-WH			ORW-50-WH			PVW-BS-56a		
	H2S (ppm)	LEL (%)	O2 (%)	H2S (ppm)	LEL (%)	O2 (%)	H2S (ppm)	LEL (%)	O2 (%)
01/01/2014 05:00:00 AM	0.0	0.0	20.9	0.0	0.0	20.9	0.0	0.0	20.9
01/01/2014 06:00:00 AM	0.0	0.0	20.9	<1.0	0.0	20.9	0.0	0.0	20.9
01/01/2014 07:00:00 AM	0.0	0.0	20.9	0.0	0.0	20.9	0.0	0.0	20.9
01/01/2014 08:00:00 AM	0.0	0.0	20.9	<1.0	0.0	20.9	0.0	0.0	20.9
01/01/2014 09:00:00 AM	0.0	0.0	20.9	0.0	0.0	20.9	0.0	0.0	20.9
01/01/2014 10:00:00 AM	0.0	0.0	20.9	0.0	0.0	20.9	0.0	0.0	20.9
01/01/2014 11:00:00 AM	0.0	0.0	20.9	0.0	0.0	20.9	0.0	0.0	20.9
01/01/2014 12:00:00 PM	0.0	0.0	20.9	0.0	0.0	20.9	0.0	0.0	20.9
01/01/2014 01:00:00 PM	0.0	0.0	20.9	0.0	0.0	20.9	0.0	0.0	20.9
01/01/2014 02:00:00 PM	0.0	0.0	20.9	0.0	0.0	20.9	0.0	0.0	20.9
01/01/2014 03:00:00 PM	0.0	0.0	20.9	0.0	0.0	20.9	0.0	0.0	20.9
01/01/2014 04:00:00 PM	0.0	0.0	20.9	0.0	0.0	20.9	0.0	0.0	20.9
01/01/2014 05:00:00 PM	0.0	0.0	20.9	0.0	0.0	20.9	0.0	0.0	20.9
01/01/2014 06:00:00 PM	0.0	0.0	20.9	0.0	0.0	20.9	0.0	0.0	20.9
01/01/2014 07:00:00 PM	0.0	0.0	20.9	0.0	0.0	20.9	0.0	0.0	20.9
01/01/2014 08:00:00 PM	0.0	0.0	20.9	0.0	0.0	20.9	0.0	0.0	20.9
01/01/2014 09:00:00 PM	0.0	0.0	20.9	0.0	0.0	20.9	0.0	0.0	20.9
01/01/2014 10:00:00 PM	0.0	0.0	20.9	0.0	0.0	20.9	0.0	0.0	20.9
01/01/2014 11:00:00 PM	0.0	0.0	20.9	0.0	0.0	20.9	0.0	0.0	20.9
01/02/2014 12:00:00 AM	0.0	0.0	20.9	0.0	0.0	20.9	0.0	0.0	20.9
01/02/2014 01:00:00 AM	0.0	0.0	20.9	0.0	0.0	20.9	0.0	0.0	20.9
01/02/2014 02:00:00 AM	0.0	0.0	20.9	0.0	0.0	20.9	0.0	0.0	20.9
01/02/2014 03:00:00 AM	0.0	0.0	20.9	0.0	0.0	20.9	0.0	0.0	20.9
01/02/2014 04:00:00 AM	0.0	0.0	20.9	0.0	0.0	20.9	0.0	0.0	20.9
01/02/2014 05:00:00 AM	0.0	0.0	20.9	0.0	0.0	20.9	0.0	0.0	20.9

Notes:

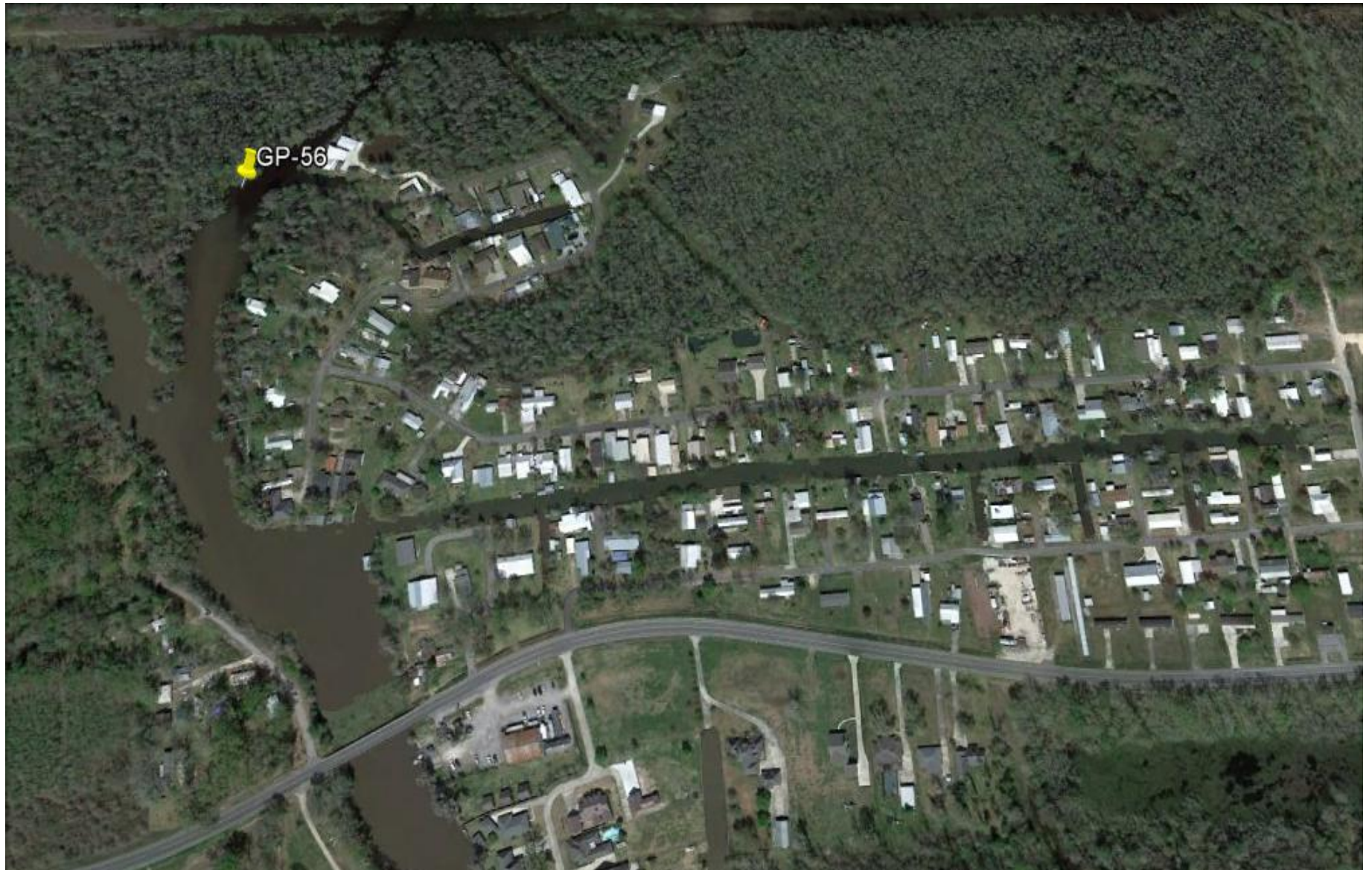
Texas Brine - Belle Rose, Louisiana
Hourly Air Monitoring Data
Sinkhole Perimeter Monitoring

*Time indicates start of time period (ex. 12:00:00 AM gives the time period 12:00:00 AM to 12:59:59 AM)

Date-Time *	Observation Relief Well -5					Observation Relief Well - 9					Observation Relief Well -11					South of OG3A-1					Onsite Trailers				
	ORW-5					ORW-9a					ORW-11a					Pad #9					TR-1a				
	CO (ppm)	Non-Methane VOC (ppm)	H2S (ppm)	LEL (%)	O2 (%)	CO (ppm)	Non-Methane VOC (ppm)	H2S (ppm)	LEL (%)	O2 (%)	CO (ppm)	Non-Methane VOC (ppm)	H2S (ppm)	LEL (%)	O2 (%)	SO2 (ppm)	Non-Methane VOC (ppm)	H2S (ppm)	LEL (%)	O2 (%)	CO (ppm)	Non-Methane VOC (ppm)	H2S (ppm)	LEL (%)	O2 (%)
01/01/2014 05:00:00 AM	0.0	0.0	0.0	0.0	20.9						0.0	0.0	0.0	0.0	20.9	0.0	0.0	0.0	0.0	20.9	0.0	0.0	0.0	0.0	20.9
01/01/2014 06:00:00 AM	<1.0	0.0	0.0	0.0	20.9	Data not properly transmitted due to a battery malfunction					<1.0	0.0	0.0	0.0	20.9	0.0	0.0	0.0	0.0	20.9	0.0	0.0	0.0	0.0	20.9
01/01/2014 07:00:00 AM	<1.0	0.0	0.0	0.0	20.9	Data not properly transmitted due to a battery malfunction					0.0	0.0	0.0	0.0	20.9	0.0	0.0	0.0	0.0	20.9	0.0	0.0	0.0	0.0	20.9
01/01/2014 08:00:00 AM	<1.0	0.0	0.0	0.0	20.9	Data not properly transmitted due to a battery malfunction					<1.0	0.0	0.0	0.0	20.9	0.0	0.0	0.0	0.0	20.9	0.0	0.0	0.0	0.0	20.9
01/01/2014 09:00:00 AM	0.0	0.0	0.0	0.0	20.9	Data not properly transmitted due to a battery malfunction					0.0	0.0	0.0	0.0	20.9	0.0	0.0	0.0	0.0	20.9	0.0	0.0	0.0	0.0	20.9
01/01/2014 10:00:00 AM	0.0	0.0	0.0	0.0	20.9	0.0	0.0	0.0	0.0	20.9	<1.0	0.0	0.0	0.0	20.9	0.0	0.0	0.0	0.0	20.9	0.0	0.0	0.0	0.0	20.9
01/01/2014 11:00:00 AM	0.0	0.0	0.0	0.0	20.9	0.0	0.0	0.0	0.0	20.9	<1.0	0.0	0.0	0.0	20.9	0.0	0.0	0.0	0.0	20.9	0.0	0.0	0.0	0.0	20.9
01/01/2014 12:00:00 PM	0.0	0.0	0.0	0.0	20.9	0.0	0.0	0.0	0.0	20.9	<1.0	0.0	0.0	0.0	20.9	0.0	0.0	0.0	0.0	20.9	0.0	0.0	0.0	0.0	20.9
01/01/2014 01:00:00 PM	0.0	0.0	0.0	0.0	20.9	0.0	0.0	0.0	0.0	20.9	<1.0	0.0	0.0	0.0	20.9	0.0	0.0	0.0	0.0	20.9	0.0	0.0	0.0	0.0	20.9
01/01/2014 02:00:00 PM	0.0	0.0	0.0	0.0	20.9	<1.0	0.0	0.0	0.0	20.9	<1.0	<1.0	0.0	0.0	20.9	0.0	0.0	0.0	0.0	20.9	0.0	0.0	0.0	0.0	20.9
01/01/2014 03:00:00 PM	0.0	0.0	0.0	0.0	20.9	0.0	0.0	0.0	0.0	20.9	<1.0	<1.0	0.0	0.0	20.9	0.0	0.0	0.0	0.0	20.9	0.0	0.0	0.0	0.0	20.9
01/01/2014 04:00:00 PM	0.0	0.0	0.0	0.0	20.9	<1.0	0.0	0.0	0.0	20.9	<1.0	<1.0	0.0	0.0	20.9	0.0	0.0	0.0	0.0	20.9	0.0	0.0	0.0	0.0	20.9
01/01/2014 05:00:00 PM	0.0	0.0	0.0	0.0	20.9	0.0	0.0	0.0	0.0	20.9	<1.0	<1.0	0.0	0.0	20.9	0.0	0.0	0.0	0.0	20.9	0.0	0.0	0.0	0.0	20.9
01/01/2014 06:00:00 PM	0.0	0.0	0.0	0.0	20.9	0.0	0.0	0.0	0.0	20.9	<1.0	0.0	0.0	0.0	20.9	0.0	0.0	0.0	0.0	20.9	0.0	0.0	0.0	0.0	20.9
01/01/2014 07:00:00 PM	0.0	0.0	0.0	0.0	20.9	<1.0	0.0	0.0	0.0	20.9	<1.0	0.0	0.0	0.0	20.9	0.0	0.0	0.0	0.0	20.9	0.0	0.0	0.0	0.0	20.9
01/01/2014 08:00:00 PM	<1.0	0.0	0.0	0.0	20.9	0.0	0.0	0.0	0.0	20.9	<1.0	0.0	0.0	0.0	20.9	0.0	0.0	0.0	0.0	20.9	0.0	0.0	0.0	0.0	20.9
01/01/2014 09:00:00 PM	0.0	0.0	0.0	0.0	20.9	<1.0	0.0	0.0	0.0	20.9	<1.0	<1.0	0.0	0.0	20.9	0.0	0.0	0.0	0.0	20.9	0.0	0.0	0.0	0.0	20.9
01/01/2014 10:00:00 PM	0.0	0.0	0.0	0.0	20.9	0.0	0.0	0.0	0.0	20.9	<1.0	<1.0	0.0	0.0	20.9	0.0	0.0	0.0	0.0	20.9	0.0	0.0	0.0	0.0	20.9
01/01/2014 11:00:00 PM	0.0	0.0	0.0	0.0	20.9	<1.0	0.0	0.0	0.0	20.9	<1.0	<1.0	0.0	0.0	20.9	0.0	0.0	0.0	0.0	20.9	0.0	0.0	0.0	0.0	20.9
01/02/2014 12:00:00 AM	0.0	0.0	0.0	0.0	20.9	<1.0	0.0	0.0	0.0	20.9	<1.0	<1.0	0.0	0.0	20.9	0.0	0.0	0.0	0.0	20.9	0.0	0.0	0.0	0.0	20.9
01/02/2014 01:00:00 AM	0.0	0.0	0.0	0.0	20.9	0.0	0.0	0.0	0.0	20.9	<1.0	<1.0	0.0	0.0	20.9	0.0	0.0	0.0	0.0	20.9	0.0	0.0	0.0	0.0	20.9
01/02/2014 02:00:00 AM	0.0	0.0	0.0	0.0	20.9	0.0	0.0	0.0	0.0	20.9	<1.0	<1.0	0.0	0.0	20.9	0.0	0.0	0.0	0.0	20.9	0.0	0.0	0.0	0.0	20.9
01/02/2014 03:00:00 AM	0.0	0.0	0.0	0.0	20.9	0.0	0.0	0.0	0.0	20.9	<1.0	<1.0	0.0	0.0	20.9	0.0	0.0	0.0	0.0	20.9	0.0	0.0	0.0	0.0	20.9
01/02/2014 04:00:00 AM	0.0	0.0	0.0	0.0	20.9	<1.0	0.0	0.0	0.0	20.9	<1.0	<1.0	0.0	0.0	20.9	0.0	0.0	0.0	0.0	20.9	0.0	0.0	0.0	0.0	20.9
01/02/2014 05:00:00 AM	0.0	0.0	0.0	0.0	20.9	<1.0	0.0	0.0	0.0	20.9	<1.0	<1.0	0.0	0.0	20.9	0.0	0.0	0.0	0.0	20.9	0.0	0.0	0.0	0.0	20.9

Notes:

RTU-8, located at ORW-9a, experienced a battery malfunction at approximately 02:17 AM on 01/01/2014. RTU-10 replaced RTU-8 at 09:53 AM on 01/01/2014, and normal data collection resumed.



Well Gas Sampling Event

December 13, 2013



Daily Action Summary

December 31, 2013

Sinkhole Perimeter Air Monitoring and Neighborhood ORWs Air Monitoring

- No Sage personnel onsite.
- Code Red (monitor sub-contractor) onsite for continuous 24/7 monitoring:
 - Britt Barnett onsite from 0:00 to 06:00; 18:00 to 24:00
 - Megan Tramonte onsite from 06:00 to 18:00

Technicians also assisted in maintenance of the monitoring equipment as necessary.

NOTE: The following locations are now equipped with solar-powered weather boxes: Pad #9, TR-1a, ORW-11a, ORW-9a, ORW-5, and PVW-BS-56a. And, the following locations are equipped with electrical power: ORW-49-WH and ORW-50-WH. Thus, daily monitor change-out is no longer necessary. All monitors will continue to be calibrated and serviced as necessary.

Data was not properly transmitted at several sinkhole locations at various durations due to radio signal issues on 12/31/2013. The onsite technician is working to retrieve missing data from the respective internal data loggers. Any retrieved data will be submitted in a revised report.

Residential Air Monitoring

- Sage has been requested to suspend bimonthly residential air monitoring. Therefore, Sage will discontinue these activities. The last event was conducted on March 26, 2013.

Gas Seep Sampling

- Not Scheduled

Well Gas Sampling

- LHG/S analytical results from the December 13, 2013 sampling event were received and are attached.

Under Slab Gas Sampling

- Not Scheduled

Air Indoor Monitoring

- Not Scheduled

Texas Brine - Belle Rose, Louisiana
Hourly Air Monitoring Data
Neighborhood Monitoring

*Time indicates start of time period (ex. 12:00:00 AM gives the time period 12:00:00 AM to 12:59:59 AM)

Date-Time *	Observation Relief Well -49 at the Well Head			Observation Relief Well - 50 at the Well Head			Passive Vent Well -56		
	ORW-49-WH			ORW-50-WH			PVW-BS-56a		
	H2S (ppm)	LEL (%)	O2 (%)	H2S (ppm)	LEL (%)	O2 (%)	H2S (ppm)	LEL (%)	O2 (%)
12/31/2013 01:00:00 AM	<1.0	0.0	20.9	<1.0	0.0	20.9	0.0	0.0	20.9
12/31/2013 02:00:00 AM	<1.0	0.0	20.9	<1.0	0.0	20.9	0.0	0.0	20.9
12/31/2013 03:00:00 AM	<1.0	0.0	20.9	<1.0	0.0	20.9	0.0	0.0	20.9
12/31/2013 04:00:00 AM	<1.0	0.0	20.9	<1.0	0.0	20.9	0.0	0.0	20.9
12/31/2013 05:00:00 AM	<1.0	0.0	20.9	<1.0	0.0	20.9	0.0	0.0	20.9
12/31/2013 06:00:00 AM	<1.0	0.0	20.6	<1.0	0.0	20.9	0.0	0.0	20.9
12/31/2013 07:00:00 AM	<1.0	0.0	20.6	<1.0	0.0	20.9	0.0	0.0	20.9
12/31/2013 08:00:00 AM	<1.0	0.0	20.6	<1.0	0.0	20.9	0.0	0.0	20.9
12/31/2013 09:00:00 AM	<1.0	0.0	20.6	<1.0	0.0	20.9	0.0	0.0	20.9
12/31/2013 10:00:00 AM	<1.0	0.0	20.7	<1.0	0.0	20.9	0.0	0.0	20.9
12/31/2013 11:00:00 AM	<1.0	0.0	20.9	0.0	0.0	20.9	0.0	0.0	20.9
12/31/2013 12:00:00 PM	0.0	0.0	20.9	0.0	0.0	20.9	0.0	0.0	20.9
12/31/2013 01:00:00 PM	0.0	0.0	20.9	0.0	0.0	20.9	0.0	0.0	20.9
12/31/2013 02:00:00 PM	0.0	0.0	20.9	0.0	0.0	20.9	0.0	0.0	20.9
12/31/2013 03:00:00 PM	0.0	0.0	20.9	0.0	0.0	20.9	0.0	0.0	20.9
12/31/2013 04:00:00 PM	0.0	0.0	20.9	0.0	0.0	20.9	0.0	0.0	20.9
12/31/2013 05:00:00 PM	0.0	0.0	20.9	0.0	0.0	20.9	0.0	0.0	20.9
12/31/2013 06:00:00 PM	0.0	0.0	20.9	<1.0	0.0	20.9	0.0	0.0	20.9
12/31/2013 07:00:00 PM	0.0	0.0	20.9	0.0	0.0	20.9	0.0	0.0	20.9
12/31/2013 08:00:00 PM	0.0	0.0	20.9	0.0	0.0	20.9	0.0	0.0	20.9
12/31/2013 09:00:00 PM	0.0	0.0	20.9	0.0	0.0	20.9	0.0	0.0	20.9
12/31/2013 10:00:00 PM	0.0	0.0	20.9	0.0	0.0	20.9	0.0	0.0	20.9
12/31/2013 11:00:00 PM	0.0	0.0	20.9	<1.0	0.0	20.9	0.0	0.0	20.9
01/01/2014 12:00:00 AM	0.0	0.0	20.9	0.0	0.0	20.9	0.0	0.0	20.9

Notes:

Texas Brine - Belle Rose, Louisiana
Hourly Air Monitoring Data
Sinkhole Perimeter Monitoring

*Time indicates start of time period (ex. 12:00:00 AM gives the time period 12:00:00 AM to 12:59:59 AM)

Date-Time *	Observation Relief Well -5					Observation Relief Well - 9					Observation Relief Well -11					South of OG3A-1					Onsite Trailers				
	ORW-5					ORW-9a					ORW-11a					Pad #9					TR-1a				
	CO (ppm)	Non-Methane VOC (ppm)	H2S (ppm)	LEL (%)	O2 (%)	CO (ppm)	Non-Methane VOC (ppm)	H2S (ppm)	LEL (%)	O2 (%)	CO (ppm)	Non-Methane VOC (ppm)	H2S (ppm)	LEL (%)	O2 (%)	SO2 (ppm)	Non-Methane VOC (ppm)	H2S (ppm)	LEL (%)	O2 (%)	CO (ppm)	Non-Methane VOC (ppm)	H2S (ppm)	LEL (%)	O2 (%)
12/31/2013 01:00:00 AM	0.0	0.0	0.0	0.0	20.9	0.0	0.0	0.0	0.0	20.9	0.0	0.0	0.0	0.0	20.9	0.0	0.0	0.0	0.0	20.9	0.0	0.0	0.0	0.0	20.9
12/31/2013 02:00:00 AM	0.0	0.0	0.0	0.0	20.9	0.0	0.0	0.0	0.0	20.9	0.0	0.0	0.0	0.0	20.9	0.0	0.0	0.0	0.0	20.9	0.0	0.0	0.0	0.0	20.9
12/31/2013 03:00:00 AM	0.0	0.0	0.0	0.0	20.9	0.0	0.0	0.0	0.0	20.9	<1.0	0.0	0.0	0.0	20.9	0.0	0.0	0.0	0.0	20.9	0.0	0.0	0.0	0.0	20.9
12/31/2013 04:00:00 AM	0.0	0.0	0.0	0.0	20.9	0.0	0.0	0.0	0.0	20.9	0.0	0.0	0.0	0.0	20.9	0.0	0.0	0.0	0.0	20.9	0.0	0.0	0.0	0.0	20.9
12/31/2013 05:00:00 AM	0.0	0.0	0.0	0.0	20.9	0.0	0.0	0.0	0.0	20.9	<1.0	0.0	0.0	0.0	20.9	0.0	0.0	0.0	0.0	20.9	0.0	0.0	0.0	0.0	20.9
12/31/2013 06:00:00 AM	0.0	0.0	0.0	0.0	20.9	0.0	0.0	0.0	0.0	20.9	0.0	0.0	0.0	0.0	20.9	0.0	0.0	0.0	0.0	20.9	0.0	0.0	0.0	0.0	20.9
12/31/2013 07:00:00 AM	<1.0	0.0	0.0	0.0	20.9	0.0	0.0	0.0	0.0	20.9	0.0	0.0	0.0	0.0	20.9	Data not properly transmitted - see note					0.0	0.0	0.0	0.0	20.9
12/31/2013 08:00:00 AM	0.0	0.0	0.0	0.0	20.9	0.0	0.0	0.0	0.0	20.9	0.0	0.0	0.0	0.0	20.9	Data not properly transmitted - see note					0.0	0.0	0.0	0.0	20.9
12/31/2013 09:00:00 AM	<1.0	0.0	0.0	0.0	20.9	0.0	0.0	0.0	0.0	20.9	0.0	0.0	0.0	0.0	20.9	0.0	0.0	0.0	0.0	20.9	0.0	0.0	0.0	0.0	20.9
12/31/2013 10:00:00 AM	0.0	0.0	0.0	0.0	20.9	0.0	0.0	0.0	0.0	20.9	<1.0	0.0	0.0	0.0	20.9	0.0	0.0	0.0	0.0	20.9	0.0	0.0	0.0	0.0	20.9
12/31/2013 11:00:00 AM	0.0	0.0	0.0	0.0	20.9	0.0	0.0	0.0	0.0	20.9	<1.0	0.0	0.0	0.0	20.9	0.0	0.0	0.0	0.0	20.9	0.0	0.0	0.0	0.0	20.9
12/31/2013 12:00:00 PM	0.0	0.0	0.0	0.0	20.9	0.0	0.0	0.0	0.0	20.9	0.0	0.0	0.0	0.0	20.9	0.0	0.0	0.0	0.0	20.9	0.0	0.0	0.0	0.0	20.9
12/31/2013 01:00:00 PM	0.0	0.0	0.0	0.0	20.9	0.0	0.0	0.0	0.0	20.9	0.0	0.0	0.0	0.0	20.9	0.0	0.0	0.0	0.0	20.9	0.0	0.0	0.0	0.0	20.9
12/31/2013 02:00:00 PM	0.0	0.0	0.0	0.0	20.9	0.0	0.0	0.0	0.0	20.9	0.0	0.0	0.0	0.0	20.9	0.0	0.0	0.0	0.0	20.9	0.0	0.0	0.0	0.0	20.9
12/31/2013 03:00:00 PM	0.0	0.0	0.0	0.0	20.9	0.0	0.0	0.0	0.0	20.9	0.0	0.0	0.0	0.0	20.9	0.0	0.0	0.0	0.0	20.9	0.0	0.0	0.0	0.0	20.9
12/31/2013 04:00:00 PM	0.0	0.0	0.0	0.0	20.9	0.0	0.0	0.0	0.0	20.9	0.0	0.0	0.0	0.0	20.9	0.0	0.0	0.0	0.0	20.9	0.0	0.0	0.0	0.0	20.9
12/31/2013 05:00:00 PM	0.0	0.0	0.0	0.0	20.9	0.0	0.0	0.0	0.0	20.9	0.0	0.0	0.0	0.0	20.9	0.0	0.0	0.0	0.0	20.9	0.0	0.0	0.0	0.0	20.9
12/31/2013 06:00:00 PM	<1.0	0.0	0.0	0.0	20.9	0.0	0.0	0.0	0.0	20.9	0.0	0.0	0.0	0.0	20.9	0.0	0.0	0.0	0.0	20.9	0.0	0.0	0.0	0.0	20.9
12/31/2013 07:00:00 PM	0.0	0.0	0.0	0.0	20.9	0.0	0.0	0.0	0.0	20.9	0.0	0.0	0.0	0.0	20.9	0.0	0.0	0.0	0.0	20.9	0.0	0.0	0.0	0.0	20.9
12/31/2013 08:00:00 PM	0.0	0.0	0.0	0.0	20.9	0.0	0.0	0.0	0.0	20.9	<1.0	0.0	0.0	0.0	20.9	0.0	0.0	0.0	0.0	20.9	0.0	0.0	0.0	0.0	20.9
12/31/2013 09:00:00 PM	0.0	0.0	0.0	0.0	20.9	0.0	0.0	0.0	0.0	20.9	0.0	0.0	0.0	0.0	20.9	0.0	0.0	0.0	0.0	20.9	0.0	0.0	0.0	0.0	20.9
12/31/2013 10:00:00 PM	<1.0	0.0	0.0	0.0	20.9	0.0	0.0	0.0	0.0	20.9	0.0	0.0	0.0	0.0	20.9	0.0	0.0	0.0	0.0	20.9	0.0	0.0	0.0	0.0	20.9
12/31/2013 11:00:00 PM	0.0	0.0	0.0	0.0	20.9	0.0	0.0	0.0	0.0	20.9	<1.0	0.0	0.0	0.0	20.9	0.0	0.0	0.0	0.0	20.9	0.0	0.0	0.0	0.0	20.9
01/01/2014 12:00:00 AM	0.0	0.0	0.0	0.0	20.9	0.0	0.0	0.0	0.0	20.9	0.0	0.0	0.0	0.0	20.9	0.0	0.0	0.0	0.0	20.9	0.0	0.0	0.0	0.0	20.9

Notes:
RTU-12, located at Pad #9, did not properly transmit data from approximately 07:01 AM to 09:02 AM on 12/31/2013 due to radio signal issues.

**Texas Brine - Belle Rose, Louisiana
Well Gas Sampling Results**

	GP-56
	Sample Date: December 13, 2013
LHG Constituents	
SPL Sample ID	GP-56
Pollutant	Mol %
Nitrogen	14.469
Carbon Dioxide	4.896
Methane	79.842
Ethane	0.593
Propane	0.157
Iso-butane	0.035
n-Butane	0.008
Iso-pentane	ND
n-Pentane	ND
Hexanes	ND
Heptanes+	ND
Sulfur Analysis	
SPL Sample ID	GP-56
Pollutant	ppm_w
Hydrogen Sulfide	1.1
Carbonyl Sulfide	ND
Dimethyl Sulfide	ND
Methyl Ethyl Sulfide	ND
Diethyl Sulfide	ND
Di-iso-propyl Sulfide	ND
Di-n-propyl Sulfide	ND
Di-iso-butyl Sulfide	ND
Di-sec-butyl Sulfide	ND
Di-tert-butyl Sulfide	ND
Di-n-butyl Sulfide	ND
Unknown Sulfides	ND
Methyl Mercaptan	ND
Ethyl Mercaptan	ND
Isopropyl Mercaptan	ND
n-Propyl Mercaptan	ND
Isobutyl Mercaptan	ND
sec-Butyl Mercaptan	ND
tert-Butyl Mercaptan	ND
n-Butyl Mercaptan	ND
Isoamyl Mercaptan	ND
pri-Amyl Mercaptan	ND
n-Amyl Mercaptan	ND
Carbon Disulfide	ND
Dimethyl Disulfide	ND
Methyl Ethyl Disulfide	ND
Diethyl Disulfide	ND
Di-iso-propyl Disulfide	ND
Di-n-propyl Disulfide	ND
Di-iso-butyl Disulfide	ND
Di-sec-butyl Disulfide	ND
Di-tert-butyl Disulfide	ND
Di-n-butyl Disulfide	ND
Unknown Disulfides	ND
Thiophene	ND
Thiophane	ND

Texas Brine - Belle Rose, Louisiana
Hourly Air Monitoring Data
Neighborhood Monitoring

*Time indicates start of time period (ex. 12:00:00 AM gives the time period 12:00:00 AM to 12:59:59 AM)

Date-Time *	Observation Relief Well -49 at the Well Head			Observation Relief Well - 50 at the Well Head			Passive Vent Well -56		
	ORW-49-WH			ORW-50-WH			PVW-BS-56a		
	H2S (ppm)	LEL (%)	O2 (%)	H2S (ppm)	LEL (%)	O2 (%)	H2S (ppm)	LEL (%)	O2 (%)
12/31/2013 05:00:00 AM	<1.0	0.0	20.9	<1.0	0.0	20.9	0.0	0.0	20.9
12/31/2013 06:00:00 AM	<1.0	0.0	20.6	<1.0	0.0	20.9	0.0	0.0	20.9
12/31/2013 07:00:00 AM	<1.0	0.0	20.6	<1.0	0.0	20.9	0.0	0.0	20.9
12/31/2013 08:00:00 AM	<1.0	0.0	20.6	<1.0	0.0	20.9	0.0	0.0	20.9
12/31/2013 09:00:00 AM	<1.0	0.0	20.6	<1.0	0.0	20.9	0.0	0.0	20.9
12/31/2013 10:00:00 AM	<1.0	0.0	20.7	<1.0	0.0	20.9	0.0	0.0	20.9
12/31/2013 11:00:00 AM	<1.0	0.0	20.9	0.0	0.0	20.9	0.0	0.0	20.9
12/31/2013 12:00:00 PM	0.0	0.0	20.9	0.0	0.0	20.9	0.0	0.0	20.9
12/31/2013 01:00:00 PM	0.0	0.0	20.9	0.0	0.0	20.9	0.0	0.0	20.9
12/31/2013 02:00:00 PM	0.0	0.0	20.9	0.0	0.0	20.9	0.0	0.0	20.9
12/31/2013 03:00:00 PM	0.0	0.0	20.9	0.0	0.0	20.9	0.0	0.0	20.9
12/31/2013 04:00:00 PM	0.0	0.0	20.9	0.0	0.0	20.9	0.0	0.0	20.9
12/31/2013 05:00:00 PM	0.0	0.0	20.9	0.0	0.0	20.9	0.0	0.0	20.9
12/31/2013 06:00:00 PM	0.0	0.0	20.9	<1.0	0.0	20.9	0.0	0.0	20.9
12/31/2013 07:00:00 PM	0.0	0.0	20.9	0.0	0.0	20.9	0.0	0.0	20.9
12/31/2013 08:00:00 PM	0.0	0.0	20.9	0.0	0.0	20.9	0.0	0.0	20.9
12/31/2013 09:00:00 PM	0.0	0.0	20.9	0.0	0.0	20.9	0.0	0.0	20.9
12/31/2013 10:00:00 PM	0.0	0.0	20.9	0.0	0.0	20.9	0.0	0.0	20.9
12/31/2013 11:00:00 PM	0.0	0.0	20.9	<1.0	0.0	20.9	0.0	0.0	20.9
01/01/2014 12:00:00 AM	0.0	0.0	20.9	0.0	0.0	20.9	0.0	0.0	20.9
01/01/2014 01:00:00 AM	0.0	0.0	20.9	0.0	0.0	20.9	0.0	0.0	20.9
01/01/2014 02:00:00 AM	0.0	0.0	20.9	0.0	0.0	20.9	0.0	0.0	20.9
01/01/2014 03:00:00 AM	0.0	0.0	20.9	0.0	0.0	20.9	0.0	0.0	20.9
01/01/2014 04:00:00 AM	0.0	0.0	20.9	0.0	0.0	20.9	0.0	0.0	20.9
01/01/2014 05:00:00 AM	0.0	0.0	20.9	0.0	0.0	20.9	0.0	0.0	20.9

Notes:

Texas Brine - Belle Rose, Louisiana
Hourly Air Monitoring Data
Sinkhole Perimeter Monitoring

*Time indicates start of time period (ex. 12:00:00 AM gives the time period 12:00:00 AM to 12:59:59 AM)

Date-Time *	Observation Relief Well -5					Observation Relief Well - 9					Observation Relief Well -11					South of OG3A-1					Onsite Trailers				
	ORW-5					ORW-9a					ORW-11a					Pad #9					TR-1a				
	CO (ppm)	Non-Methane VOC (ppm)	H2S (ppm)	LEL (%)	O2 (%)	CO (ppm)	Non-Methane VOC (ppm)	H2S (ppm)	LEL (%)	O2 (%)	CO (ppm)	Non-Methane VOC (ppm)	H2S (ppm)	LEL (%)	O2 (%)	SO2 (ppm)	Non-Methane VOC (ppm)	H2S (ppm)	LEL (%)	O2 (%)	CO (ppm)	Non-Methane VOC (ppm)	H2S (ppm)	LEL (%)	O2 (%)
12/31/2013 05:00:00 AM	0.0	0.0	0.0	0.0	20.9	0.0	0.0	0.0	0.0	20.9	<1.0	0.0	0.0	0.0	20.9	0.0	0.0	0.0	0.0	20.9	0.0	0.0	0.0	0.0	20.9
12/31/2013 06:00:00 AM	0.0	0.0	0.0	0.0	20.9	0.0	0.0	0.0	0.0	20.9	0.0	0.0	0.0	0.0	20.9	0.0	0.0	0.0	0.0	20.9	0.0	0.0	0.0	0.0	20.9
12/31/2013 07:00:00 AM	<1.0	0.0	0.0	0.0	20.9	0.0	0.0	0.0	0.0	20.9	0.0	0.0	0.0	0.0	20.9	0.0	0.0	0.0	0.0	20.9	0.0	0.0	0.0	0.0	20.9
12/31/2013 08:00:00 AM	0.0	0.0	0.0	0.0	20.9	0.0	0.0	0.0	0.0	20.9	0.0	0.0	0.0	0.0	20.9	Data not properly transmitted - see note					0.0	0.0	0.0	0.0	20.9
12/31/2013 09:00:00 AM	<1.0	0.0	0.0	0.0	20.9	0.0	0.0	0.0	0.0	20.9	0.0	0.0	0.0	0.0	20.9	0.0	0.0	0.0	0.0	20.9	0.0	0.0	0.0	0.0	20.9
12/31/2013 10:00:00 AM	0.0	0.0	0.0	0.0	20.9	0.0	0.0	0.0	0.0	20.9	<1.0	0.0	0.0	0.0	20.9	0.0	0.0	0.0	0.0	20.9	0.0	0.0	0.0	0.0	20.9
12/31/2013 11:00:00 AM	0.0	0.0	0.0	0.0	20.9	0.0	0.0	0.0	0.0	20.9	<1.0	0.0	0.0	0.0	20.9	0.0	0.0	0.0	0.0	20.9	0.0	0.0	0.0	0.0	20.9
12/31/2013 12:00:00 PM	0.0	0.0	0.0	0.0	20.9	0.0	0.0	0.0	0.0	20.9	0.0	0.0	0.0	0.0	20.9	0.0	0.0	0.0	0.0	20.9	0.0	0.0	0.0	0.0	20.9
12/31/2013 01:00:00 PM	0.0	0.0	0.0	0.0	20.9	0.0	0.0	0.0	0.0	20.9	0.0	0.0	0.0	0.0	20.9	0.0	0.0	0.0	0.0	20.9	0.0	0.0	0.0	0.0	20.9
12/31/2013 02:00:00 PM	0.0	0.0	0.0	0.0	20.9	0.0	0.0	0.0	0.0	20.9	0.0	0.0	0.0	0.0	20.9	0.0	0.0	0.0	0.0	20.9	0.0	0.0	0.0	0.0	20.9
12/31/2013 03:00:00 PM	0.0	0.0	0.0	0.0	20.9	0.0	0.0	0.0	0.0	20.9	0.0	0.0	0.0	0.0	20.9	0.0	0.0	0.0	0.0	20.9	0.0	0.0	0.0	0.0	20.9
12/31/2013 04:00:00 PM	0.0	0.0	0.0	0.0	20.9	0.0	0.0	0.0	0.0	20.9	0.0	0.0	0.0	0.0	20.9	0.0	0.0	0.0	0.0	20.9	0.0	0.0	0.0	0.0	20.9
12/31/2013 05:00:00 PM	0.0	0.0	0.0	0.0	20.9	0.0	0.0	0.0	0.0	20.9	0.0	0.0	0.0	0.0	20.9	0.0	0.0	0.0	0.0	20.9	0.0	0.0	0.0	0.0	20.9
12/31/2013 06:00:00 PM	<1.0	0.0	0.0	0.0	20.9	0.0	0.0	0.0	0.0	20.9	0.0	0.0	0.0	0.0	20.9	0.0	0.0	0.0	0.0	20.9	0.0	0.0	0.0	0.0	20.9
12/31/2013 07:00:00 PM	0.0	0.0	0.0	0.0	20.9	0.0	0.0	0.0	0.0	20.9	0.0	0.0	0.0	0.0	20.9	0.0	0.0	0.0	0.0	20.9	0.0	0.0	0.0	0.0	20.9
12/31/2013 08:00:00 PM	0.0	0.0	0.0	0.0	20.9	0.0	0.0	0.0	0.0	20.9	<1.0	0.0	0.0	0.0	20.9	0.0	0.0	0.0	0.0	20.9	0.0	0.0	0.0	0.0	20.9
12/31/2013 09:00:00 PM	0.0	0.0	0.0	0.0	20.9	0.0	0.0	0.0	0.0	20.9	0.0	0.0	0.0	0.0	20.9	0.0	0.0	0.0	0.0	20.9	0.0	0.0	0.0	0.0	20.9
12/31/2013 10:00:00 PM	<1.0	0.0	0.0	0.0	20.9	0.0	0.0	0.0	0.0	20.9	0.0	0.0	0.0	0.0	20.9	0.0	0.0	0.0	0.0	20.9	0.0	0.0	0.0	0.0	20.9
12/31/2013 11:00:00 PM	0.0	0.0	0.0	0.0	20.9	0.0	0.0	0.0	0.0	20.9	<1.0	0.0	0.0	0.0	20.9	0.0	0.0	0.0	0.0	20.9	0.0	0.0	0.0	0.0	20.9
01/01/2014 12:00:00 AM	0.0	0.0	0.0	0.0	20.9	0.0	0.0	0.0	0.0	20.9	0.0	0.0	0.0	0.0	20.9	0.0	0.0	0.0	0.0	20.9	0.0	0.0	0.0	0.0	20.9
01/01/2014 01:00:00 AM	<1.0	0.0	0.0	0.0	20.9	0.0	0.0	0.0	0.0	20.9	0.0	0.0	0.0	0.0	20.9	0.0	0.0	0.0	0.0	20.9	0.0	0.0	0.0	0.0	20.9
01/01/2014 02:00:00 AM	0.0	0.0	0.0	0.0	20.9	0.0	0.0	0.0	0.0	20.9	<1.0	0.0	0.0	0.0	20.9	0.0	0.0	0.0	0.0	20.9	0.0	0.0	0.0	0.0	20.9
01/01/2014 03:00:00 AM	0.0	0.0	0.0	0.0	20.9	Data not properly transmitted due to a battery malfunction					<1.0	0.0	0.0	0.0	20.9	0.0	0.0	0.0	0.0	20.9	0.0	0.0	0.0	0.0	20.9
01/01/2014 04:00:00 AM	0.0	0.0	0.0	0.0	20.9	Data not properly transmitted due to a battery malfunction					<1.0	0.0	0.0	0.0	20.9	0.0	0.0	0.0	0.0	20.9	0.0	0.0	0.0	0.0	20.9
01/01/2014 05:00:00 AM	0.0	0.0	0.0	0.0	20.9	Data not properly transmitted due to a battery malfunction					0.0	0.0	0.0	0.0	20.9	0.0	0.0	0.0	0.0	20.9	0.0	0.0	0.0	0.0	20.9

Notes:

RTU-8, located at ORW-9a, experienced a battery malfunction at approximately 02:17 AM on 01/01/2014. The onsite technician will replace RTU-8 with another monitoring unit so that normal data collection can resume.

RTU-12, located at Pad #9, did not properly transmit data from approximately 07:01 AM to 09:02 AM on 12/31/2013 due to radio signal issues.

RESPEC Consulting & Services

Texas Brine, L.L.C.

Assumption Parish, Louisiana

Daily Field Report

Report By: David Gnage

Date: 12/31/13

Company: RESPEC

Job #: 02241

Personnel	Company	Job Title

Time Onsite: Start Time: NA End Time: NA

DAILY ACTIVITY:

No Field Work Conducted. RESPEC was not on-site.

Instrumentation Program:

No Work Conducted.

Other Programs:

Passive Vent-GP-56: No Work Conducted.

PROPOSED SCHEDULE:

Instrumentation Program:

RESPEC is tentatively planning to be on-site the week of January 6th or January 13th, 2014 depending on contractor availability.

Other Programs:

Passive Vent Wells: RESPEC currently has No Work Scheduled.

Initials: DJG

RESPEC Consulting & Services

Texas Brine, L.L.C.

Assumption Parish, Louisiana

Daily Field Report

Report By: David Gnage

Date: 1/1/2014

Company: RESPEC

Job #: 02241

Personnel	Company	Job Title

Time Onsite: Start Time: NA End Time: NA

DAILY ACTIVITY:

No Field Work Conducted. RESPEC was not on-site.

Instrumentation Program:

No Work Conducted.

Other Programs:

Passive Vent-GP-56: No Work Conducted.

PROPOSED SCHEDULE:

Instrumentation Program:

RESPEC is tentatively planning to be on-site the week of January 6th or January 13th, 2014 depending on contractor availability.

Other Programs:

Passive Vent Wells: RESPEC currently has No Work Scheduled.

Initials: DJG