



Texas Brine Company, LLC

1301 Highway 70
Belle Rose, LA 70341
Phone: 985-369-6657
Fax: 985-369-7873



May 9, 2013

Commissioner James H. Welsh
P.O. Box 94275
Baton Rouge, LA 70804

RE: In response to State of Louisiana Department of Natural Resources Office of Conservation's Second Amendment to Declaration of Emergency and Directive

Commissioner Welsh,

In response to the Second Amendment and Declaration of Emergency and Directive order issued by the Louisiana Department of Natural Resources (LDNR), Office of Conservation on September 25, 2012, Texas Brine Company, LLC (TBC) understands the seven items listed in the document.

In the above mentioned, TBC was specifically directed and ordered to perform certain tasks outlined in the above mentioned document. Below are the required responses, as directed.

1. TBC's counsel provided LDNR legal counsel with a response to Directives 1-3 on September 28, 2012.
2. TBC understands Directive 4, which is to provide all daily logs and field notes from all contractors conducting investigation into subsidence and natural gas bubbling. The Daily Action Summary and results for current information can be found in the Attachment section of this report.
3. TBC understands Directive 5, which directs TBC to immediately allow for split or share any sample taken on site related to Well 3A (Serial Number 974265), the cavern, other wells facilities or other site locations. The Daily Action Summary of today's collection can be found in Attachment section of this report.
4. TBC understands Directive 6, which directs TBC to immediately report the results (final and preliminary) of any tests, logs samples or data collection performed on Well 3A, the cavern, other wells, facilities or site locations that indicate a change in any previously known conditions related to the investigation of the subsidence or natural gas bubbling

events, and continue to report any such results. The Daily Action Summary and the Results related to this Directive can be found in Attachment section of this report.

5. TBC understands the Directive 7, which states that TBC will provide a daily summary of all tests, or logs performed or samples taken from Well 3A and the cavern as well as any results of those tests or logs, including preliminary as of September 25, 2012 and going forward. The Daily Summary and Results related to this Directive can be found in Attachment section of this report.

Please note that the drilling rig used for the Observation Well 3A has been removed and the site is being rigged down and returned to pre-drilling condition. As such, daily drilling reports for this well have ceased. Plans are being made for longer term potential gas venting/flaring requirements and possible hydrocarbon material recover from Well 3A.

In addition, previous daily summary reports issued to LDNR have included significant duplicate information as there is a fair amount of overlap in the information requested in each of the Directives included in the September 25, 2012 order. All requested information associated with the Directives issued in the September 25, 2012 order are included in the Attachment section of this report.

TBC believes that the submittal of this report satisfies the requirements of the Declaration of Emergency and Directive issued on September 25, 2012. As directed this report is submitted by email to conservationorder@la.gov, ref. "Emergency Declaration-Texas Brine Company LLC-9/25/2012.



Bruce E. Martin

Vice President, Operations

Texas Brine Company, LLC

Summary Table for Daily Events

TBC Oxy Grand Bayou Data Management-Environmental										
Contractor	Responsibilities	Collected By		Date Collected		Delivered to Lab	Results from Lab	Laboratory	Method	Date to Agencies
Sage	Stationary Air Monitoring	William Verrett - 07:54 - 08:53 Pete Hyatt IV (Code Red) - 07:00 - 17:00		5/8/2013		NA	NA	NA	AreaRAE Monitors	5/9/2013
	Residential Air Monitoring	Sage has been requested to suspend bimonthly residential air monitoring. Therefore, Sage will discontinue these activities.		NA		NA	NA	NA	NA	NA
	Gas Seep Sampling	No work performed		5/8/2013		NA	NA	NA	NA	NA
	Well Gas Sampling	No work performed		5/8/2013		NA	NA	NA	NA	NA
	Under Slab Gas Sampling	No work performed		5/8/2013		NA	NA	NA	NA	NA
	Indoor Air Monitoring	Steven Shaughnessy & William Verrett Site 81 - 10:13 - 10:17		5/8/2013		NA	NA	NA	Hand-held Multipro Monitor	5/9/2013
Respec	Inclinometers/Tilt Meters	NA	NA	NA	NA	NA	NA	NA	NA	NA
	InSAR Reflector Installations	NA	NA	NA	NA	NA	NA	NA	NA	NA
	Subsidence Survey-Fenstermaker	NA	NA	NA	NA	NA	NA	NA	NA	NA
	Shallow Geophone Installation	NA	NA	NA	NA	NA	NA	NA	NA	NA
	Deep Geophone Installation	NA	NA	NA	NA	NA	NA	NA	NA	NA
	Amendment #3, Directive #2	NA	NA	NA	NA	NA	NA	NA	NA	NA
	Expansion of geoprobe gas sampling locations	NA	NA	NA	NA	NA	NA	NA	NA	NA
Miller	Weekly Stability Survey	NA		NA		NA	NA	NA	NA	NA
	Misc. Survey Work	NA		NA		NA	NA	NA	NA	NA
	Sinkhole Hydro/Perimeter Survey	NA		NA		NA	NA	NA	NA	NA
Pisani	Surface Water	NA		NA		NA	NA	NA	NA	NA
	Industrial Well Water	NA		NA		NA	NA	NA	NA	NA
	MRAAWell Water	EGG		5/8/2013		NA	NA	GCAL	Chloride, Bromide and Sulfate (Inorganic Anions) – SW-846 9056A, Conductivity – SM 2510B, TDS – SM 2540C, Cations/metals – SW-846 6010B, Carbonate & Bicarbonate Alkalinity – SM 2320B, BTEX – SW-846 8260B, TPH Fractions – TX 1006/LA 1006, and Dissolved Gases - RSK-175	NA
	Geoprobe Wells	NA		NA		NA	NA	NA	NA	NA
Grand Bayou Well 3A										
Daily Operations at 3A		Summary of Today's events								
		Oxy 3A								
5/9/2013		7am								
		493.36		5/9/2013						
5/9/2013		Relief Well #1								
		See ORW-01 Flare Spreadsheet								

Attachments

Daily Action Summary

May 8, 2013

Stationary Air Monitoring

- William Verrett onsite from 07:54 – 08:53. Changed out the monitors between 08:09 and 08:37. Collected data from the monitoring database and forwarded to Eric Rucinski in the Baton Rouge office for processing.
- Pete Hyatt IV of Code Red (monitor sub-contractor) onsite from 07:00 to 17:00. Assisted in battery change outs and maintenance of the monitoring equipment.

Residential Air Monitoring

- Sage has been requested to suspend bimonthly residential air monitoring. Therefore, Sage will discontinue these activities. The last event was conducted on March 26, 2013.

Gas Seep Sampling

- Not Scheduled

Well Gas Sampling

- Not Scheduled

Under Slab Gas Sampling

- Not Scheduled

Air Indoor Monitoring

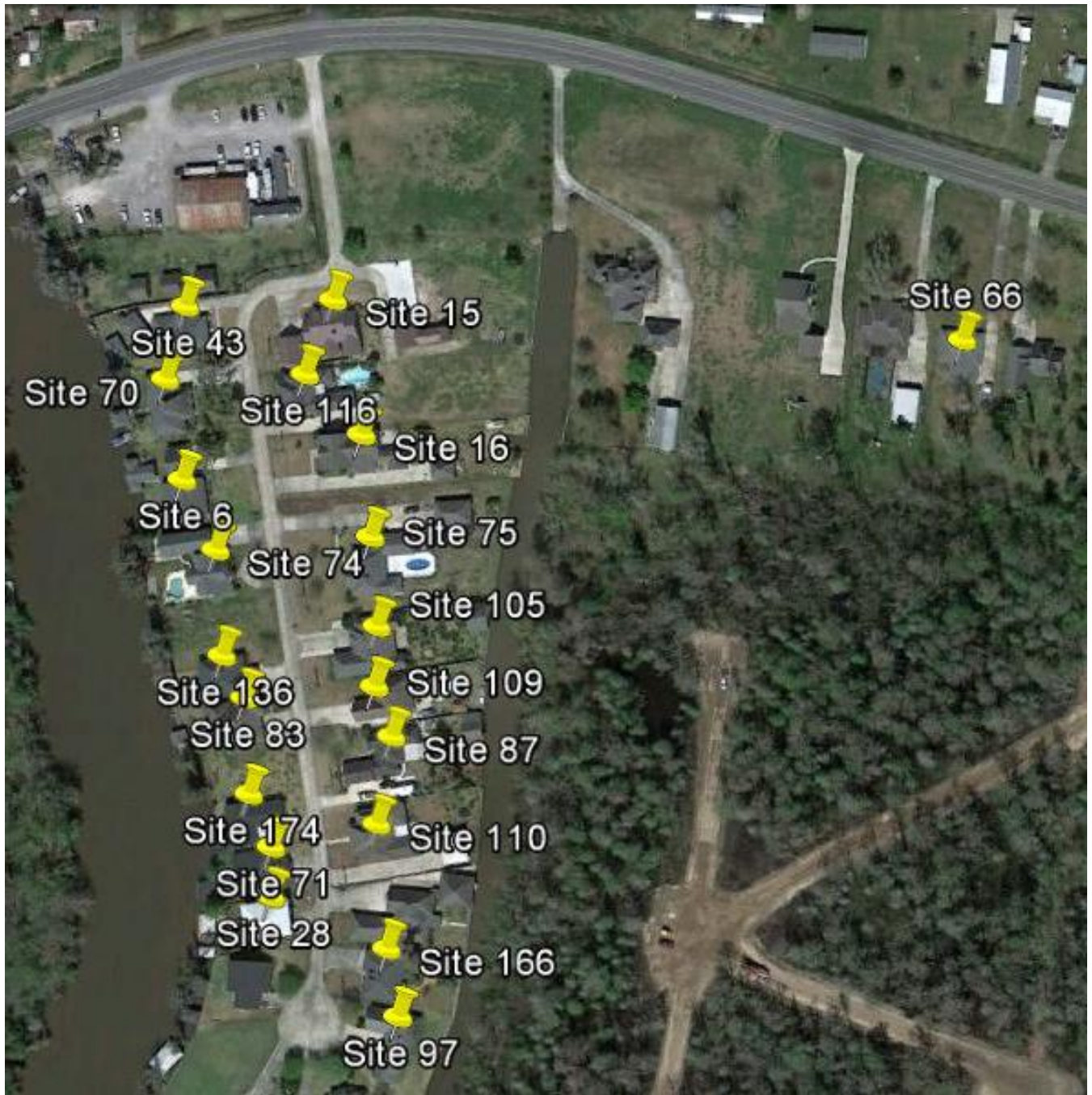
- Steven Shaughnessy and William Verrett performed the in-home LEL and H₂S monitoring between 10:13 and 10:17 for Site 81. Data collected from the monitoring was forwarded to Jill Martin in the Baton Rouge office for processing.

Texas Brine - Belle Rose, Louisiana
Hourly Air Monitoring Data

*Time indicates start of time period (ex. 12:00:00 AM gives the time period 12:00:00 AM to 12:59:59 AM)

Date-Time *	South-most Pipeline Site					Middle-most Pipeline Site					North-most Pipeline Site					On Drill Rig Boom					Onsite Trailers				
	ST-3					ST-2					ST-1					OG 3A-1					TR-1				
	CO (ppm)	Non-Methane VOC (ppm)	H2S (ppm)	LEL (%)	O2 (%)	CO (ppm)	Non-Methane VOC (ppm)	H2S (ppm)	LEL (%)	O2 (%)	CO (ppm)	Non-Methane VOC (ppm)	H2S (ppm)	LEL (%)	O2 (%)	SO2 (ppm)	Non-Methane VOC (ppm)	H2S (ppm)	LEL (%)	O2 (%)	CO (ppm)	Non-Methane VOC (ppm)	H2S (ppm)	LEL (%)	O2 (%)
05/08/2013 01:00:00 AM	0.0	0.0	0.0	0.0	20.9	<1.0	0.0	<1.0	0.0	20.9	0.0	0.0	0.0	0.0	20.9	0.0	<1.0	0.0	0.0	20.9	0.0	0.0	0.0	0.0	20.9
05/08/2013 02:00:00 AM	0.0	0.0	0.0	0.0	20.9	<1.0	0.0	<1.0	0.0	20.9	0.0	0.0	0.0	0.0	20.9	0.0	<1.0	0.0	0.0	20.9	0.0	0.0	0.0	0.0	20.9
05/08/2013 03:00:00 AM	0.0	0.0	0.0	0.0	20.9	<1.0	0.0	<1.0	0.0	20.9	0.0	0.0	0.0	0.0	20.9	0.0	<1.0	0.0	0.0	20.9	0.0	0.0	0.0	0.0	20.9
05/08/2013 04:00:00 AM	0.0	0.0	0.0	0.0	20.9	<1.0	0.0	<1.0	0.0	20.9	0.0	0.0	0.0	0.0	20.9	0.0	<1.0	0.0	0.0	20.9	0.0	0.0	0.0	0.0	20.9
05/08/2013 05:00:00 AM	0.0	0.0	0.0	0.0	20.9	<1.0	0.0	<1.0	0.0	20.9	0.0	0.0	0.0	0.0	20.9	0.0	<1.0	0.0	0.0	20.9	0.0	0.0	0.0	0.0	20.9
05/08/2013 06:00:00 AM	0.0	0.0	0.0	0.0	20.9	<1.0	0.0	<1.0	0.0	20.9	0.0	0.0	0.0	0.0	20.9	0.0	<1.0	0.0	0.0	20.9	0.0	0.0	0.0	0.0	20.9
05/08/2013 07:00:00 AM	0.0	<1.0	0.0	0.0	20.9	<1.0	0.0	<1.0	0.0	20.9	0.0	0.0	0.0	0.0	20.9	0.0	<1.0	0.0	0.0	20.9	0.0	0.0	0.0	0.0	20.9
05/08/2013 08:00:00 AM	<1.0	<1.0	0.0	0.0	20.9	<1.0	0.0	<1.0	0.0	20.9	<1.0	0.0	0.0	0.0	20.9	<1.0	1.1	0.0	0.0	20.9	0.0	<1.0	0.0	0.0	20.9
05/08/2013 09:00:00 AM	0.0	0.0	0.0	0.0	20.9	<1.0	0.0	0.0	0.0	20.9	0.0	0.0	0.0	0.0	20.9	<1.0	<1.0	0.0	0.0	20.9	0.0	<1.0	0.0	0.0	20.9
05/08/2013 10:00:00 AM	0.0	0.0	0.0	0.0	21.2	<1.0	0.0	0.0	0.0	20.7	0.0	0.0	0.0	0.0	20.9	<1.0	<1.0	0.0	0.0	20.9	0.0	0.0	0.0	0.0	21.1
05/08/2013 11:00:00 AM	0.0	0.0	<1.0	0.0	21.3	<1.0	0.0	0.0	0.0	20.7	0.0	0.0	0.0	0.0	21.2	<1.0	<1.0	0.0	0.0	20.9	0.0	0.0	0.0	0.0	21.2
05/08/2013 12:00:00 PM	<1.0	0.0	<1.0	0.0	21.4	<1.0	0.0	0.0	0.0	20.8	0.0	0.0	0.0	0.0	21.2	<1.0	<1.0	0.0	0.0	20.9	0.0	0.0	0.0	0.0	21.3
05/08/2013 01:00:00 PM	0.0	0.0	0.0	0.0	21.5	<1.0	0.0	0.0	0.0	20.9	0.0	0.0	0.0	0.0	21.2	<1.0	<1.0	0.0	0.0	20.9	0.0	0.0	0.0	0.0	21.3
05/08/2013 02:00:00 PM	0.0	0.0	0.0	0.0	21.5	<1.0	0.0	0.0	0.0	20.9	0.0	0.0	0.0	0.0	21.1	<1.0	<1.0	<1.0	0.0	20.9	0.0	0.0	0.0	0.0	21.4
05/08/2013 03:00:00 PM	0.0	0.0	0.0	0.0	21.4	<1.0	0.0	0.0	0.0	20.9	0.0	0.0	0.0	0.0	21.1	<1.0	<1.0	<1.0	0.0	20.9	0.0	0.0	<1.0	0.0	21.4
05/08/2013 04:00:00 PM	0.0	0.0	0.0	0.0	21.4	<1.0	0.0	0.0	0.0	20.9	0.0	0.0	0.0	0.0	21.1	<1.0	<1.0	<1.0	0.0	20.9	0.0	0.0	0.0	0.0	21.4
05/08/2013 05:00:00 PM	0.0	0.0	<1.0	0.0	21.3	<1.0	0.0	0.0	0.0	20.9	0.0	0.0	0.0	0.0	21.1	<1.0	<1.0	<1.0	0.0	20.9	0.0	0.0	0.0	0.0	21.4
05/08/2013 06:00:00 PM	0.0	0.0	0.0	0.0	21.3	<1.0	0.0	0.0	0.0	20.9	0.0	0.0	0.0	0.0	21.0	<1.0	<1.0	<1.0	0.0	20.9	0.0	0.0	0.0	0.0	21.4
05/08/2013 07:00:00 PM	0.0	0.0	0.0	0.0	21.3	<1.0	0.0	0.0	0.0	20.9	0.0	0.0	0.0	0.0	20.9	<1.0	<1.0	0.0	0.0	20.9	0.0	0.0	0.0	0.0	21.4
05/08/2013 08:00:00 PM	0.0	0.0	0.0	0.0	21.3	<1.0	0.0	0.0	0.0	20.9	0.0	0.0	0.0	0.0	20.9	<1.0	<1.0	0.0	0.0	20.9	0.0	0.0	0.0	0.0	21.3
05/08/2013 09:00:00 PM	0.0	0.0	0.0	0.0	21.2	<1.0	0.0	0.0	0.0	21.0	0.0	0.0	0.0	0.0	20.9	<1.0	<1.0	0.0	0.0	20.9	0.0	0.0	0.0	0.0	21.2
05/08/2013 10:00:00 PM	0.0	0.0	0.0	0.0	21.2	<1.0	0.0	0.0	0.0	20.9	0.0	0.0	0.0	0.0	20.9	<1.0	1.0	0.0	<1.0	20.9	0.0	0.0	0.0	0.0	21.2
05/08/2013 11:00:00 PM	<1.0	<1.0	<1.0	0.0	21.2	<1.0	0.0	0.0	0.0	21.1	0.0	0.0	0.0	0.0	20.9	<1.0	1.1	0.0	3.7	20.9	0.0	0.0	0.0	0.0	21.2
05/09/2013 12:00:00 AM	<1.0	2.8	<1.0	0.0	20.9	<1.0	0.0	0.0	0.0	20.9	0.0	0.0	0.0	0.0	20.9	<1.0	1.1	0.0	5.6	20.9	0.0	0.0	0.0	0.0	21.2

Notes:



Indoor Monitoring Locations

Through 05/08/2013

Sportsman Drive and Highway 70 Locations





**Indoor Monitoring Locations
Through 05/08/2013
Crawfish Stew Street Locations**





Indoor Monitoring Locations

Through 05/08/2013

Sauce Piquante Lane and Jambalaya Street Locations





**Indoor Monitoring Locations
Through 05/08/2013
Grand Bayou Street Locations**



Indoor Residential Monitoring - Site 81
Bayou Corne, LA
May 8, 2013

Index	Rooms Monitored	Number of Readings Taken In Reach Area/Room	LEL Reading Results (%)	H ₂ S Reading Results (ppm)
1	Left Area	4	No Detectable Readings	No Detectable Readings
2	Right Area	6	No Detectable Readings	No Detectable Readings

Texas Brine - Belle Rose, Louisiana
Hourly Air Monitoring Data

*Time indicates start of time period (ex. 12:00:00 AM gives the time period 12:00:00 AM to 12:59:59 AM)

Date-Time *	South-most Pipeline Site					Middle-most Pipeline Site					North-most Pipeline Site					On Drill Rig Boom					Onsite Trailers				
	ST-3					ST-2					ST-1					OG 3A-1					TR-1				
	CO (ppm)	Non-Methane VOC (ppm)	H2S (ppm)	LEL (%)	O2 (%)	CO (ppm)	Non-Methane VOC (ppm)	H2S (ppm)	LEL (%)	O2 (%)	CO (ppm)	Non-Methane VOC (ppm)	H2S (ppm)	LEL (%)	O2 (%)	SO2 (ppm)	Non-Methane VOC (ppm)	H2S (ppm)	LEL (%)	O2 (%)	CO (ppm)	Non-Methane VOC (ppm)	H2S (ppm)	LEL (%)	O2 (%)
05/08/2013 05:00:00 AM	0.0	0.0	0.0	0.0	20.9	<1.0	0.0	<1.0	0.0	20.9	0.0	0.0	0.0	0.0	20.9	0.0	<1.0	0.0	0.0	20.9	0.0	0.0	0.0	0.0	20.9
05/08/2013 06:00:00 AM	0.0	0.0	0.0	0.0	20.9	<1.0	0.0	<1.0	0.0	20.9	0.0	0.0	0.0	0.0	20.9	0.0	<1.0	0.0	0.0	20.9	0.0	0.0	0.0	0.0	20.9
05/08/2013 07:00:00 AM	0.0	<1.0	0.0	0.0	20.9	<1.0	0.0	<1.0	0.0	20.9	0.0	0.0	0.0	0.0	20.9	0.0	<1.0	0.0	0.0	20.9	0.0	0.0	0.0	0.0	20.9
05/08/2013 08:00:00 AM	<1.0	<1.0	0.0	0.0	20.9	<1.0	0.0	<1.0	0.0	20.9	<1.0	0.0	0.0	0.0	20.9	<1.0	1.1	0.0	0.0	20.9	0.0	<1.0	0.0	0.0	20.9
05/08/2013 09:00:00 AM	0.0	0.0	0.0	0.0	20.9	<1.0	0.0	0.0	0.0	20.9	0.0	0.0	0.0	0.0	20.9	<1.0	<1.0	0.0	0.0	20.9	0.0	<1.0	0.0	0.0	20.9
05/08/2013 10:00:00 AM	0.0	0.0	0.0	0.0	21.2	<1.0	0.0	0.0	0.0	20.7	0.0	0.0	0.0	0.0	20.9	<1.0	<1.0	0.0	0.0	20.9	0.0	0.0	0.0	0.0	21.1
05/08/2013 11:00:00 AM	0.0	0.0	<1.0	0.0	21.3	<1.0	0.0	0.0	0.0	20.7	0.0	0.0	0.0	0.0	21.2	<1.0	<1.0	0.0	0.0	20.9	0.0	0.0	0.0	0.0	21.2
05/08/2013 12:00:00 PM	<1.0	0.0	<1.0	0.0	21.4	<1.0	0.0	0.0	0.0	20.8	0.0	0.0	0.0	0.0	21.2	<1.0	<1.0	0.0	0.0	20.9	0.0	0.0	0.0	0.0	21.3
05/08/2013 01:00:00 PM	0.0	0.0	0.0	0.0	21.5	<1.0	0.0	0.0	0.0	20.9	0.0	0.0	0.0	0.0	21.2	<1.0	<1.0	0.0	0.0	20.9	0.0	0.0	0.0	0.0	21.3
05/08/2013 02:00:00 PM	0.0	0.0	0.0	0.0	21.5	<1.0	0.0	0.0	0.0	20.9	0.0	0.0	0.0	0.0	21.1	<1.0	<1.0	<1.0	0.0	20.9	0.0	0.0	0.0	0.0	21.4
05/08/2013 03:00:00 PM	0.0	0.0	0.0	0.0	21.4	<1.0	0.0	0.0	0.0	20.9	0.0	0.0	0.0	0.0	21.1	<1.0	<1.0	<1.0	0.0	20.9	0.0	0.0	<1.0	0.0	21.4
05/08/2013 04:00:00 PM	0.0	0.0	0.0	0.0	21.4	<1.0	0.0	0.0	0.0	20.9	0.0	0.0	0.0	0.0	21.1	<1.0	<1.0	<1.0	0.0	20.9	0.0	0.0	0.0	0.0	21.4
05/08/2013 05:00:00 PM	0.0	0.0	<1.0	0.0	21.3	<1.0	0.0	0.0	0.0	20.9	0.0	0.0	0.0	0.0	21.1	<1.0	<1.0	<1.0	0.0	20.9	0.0	0.0	0.0	0.0	21.4
05/08/2013 06:00:00 PM	0.0	0.0	0.0	0.0	21.3	<1.0	0.0	0.0	0.0	20.9	0.0	0.0	0.0	0.0	21.0	<1.0	<1.0	<1.0	0.0	20.9	0.0	0.0	0.0	0.0	21.4
05/08/2013 07:00:00 PM	0.0	0.0	0.0	0.0	21.3	<1.0	0.0	0.0	0.0	20.9	0.0	0.0	0.0	0.0	20.9	<1.0	<1.0	0.0	0.0	20.9	0.0	0.0	0.0	0.0	21.4
05/08/2013 08:00:00 PM	0.0	0.0	0.0	0.0	21.3	<1.0	0.0	0.0	0.0	20.9	0.0	0.0	0.0	0.0	20.9	<1.0	<1.0	0.0	0.0	20.9	0.0	0.0	0.0	0.0	21.3
05/08/2013 09:00:00 PM	0.0	0.0	0.0	0.0	21.2	<1.0	0.0	0.0	0.0	21.0	0.0	0.0	0.0	0.0	20.9	<1.0	<1.0	0.0	0.0	20.9	0.0	0.0	0.0	0.0	21.2
05/08/2013 10:00:00 PM	0.0	0.0	0.0	0.0	21.2	<1.0	0.0	0.0	0.0	20.9	0.0	0.0	0.0	0.0	20.9	<1.0	1.0	0.0	<1.0	20.9	0.0	0.0	0.0	0.0	21.2
05/08/2013 11:00:00 PM	<1.0	<1.0	<1.0	0.0	21.2	<1.0	0.0	0.0	0.0	21.1	0.0	0.0	0.0	0.0	20.9	<1.0	1.1	0.0	3.7	20.9	0.0	0.0	0.0	0.0	21.2
05/09/2013 12:00:00 AM	<1.0	2.8	<1.0	0.0	20.9	<1.0	0.0	0.0	0.0	20.9	0.0	0.0	0.0	0.0	20.9	<1.0	1.1	0.0	5.6	20.9	0.0	0.0	0.0	0.0	21.2
05/09/2013 01:00:00 AM	<1.0	8.9	<1.0	0.0	20.9	<1.0	0.0	0.0	0.0	20.9	0.0	0.0	0.0	0.0	20.9	<1.0	1.2	0.0	7.3	20.9	0.0	0.0	0.0	0.0	21.0
05/09/2013 02:00:00 AM	<1.0	14.6	<1.0	0.0	20.9	<1.0	0.0	0.0	0.0	20.9	0.0	0.0	0.0	0.0	20.9	<1.0	1.2	0.0	8.7	20.9	0.0	0.0	0.0	0.0	20.9
05/09/2013 03:00:00 AM	<1.0	19.0	<1.0	0.0	20.9	<1.0	0.0	0.0	0.0	20.9	0.0	0.0	0.0	0.0	20.9	<1.0	1.3	0.0	9.2	20.9	0.0	0.0	0.0	0.0	20.9
05/09/2013 04:00:00 AM	<1.0	24.4	<1.0	0.0	20.9	<1.0	0.0	0.0	0.0	20.9	0.0	0.0	0.0	0.0	20.9	<1.0	1.3	0.0	10.4	20.9	0.0	0.0	0.0	0.0	20.9
05/09/2013 05:00:00 AM	<1.0	29.7	<1.0	0.0	20.9	<1.0	0.0	0.0	0.0	20.9	0.0	0.0	0.0	0.0	20.9	<1.0	1.3	0.0	11.3	20.9	0.0	<1.0	0.0	0.0	20.9

Notes:

RTU-8, located at OG3A-1, began recording elevated LEL readings at approximately 01:20 AM on 5/9/2013.

RTU-9, located at ST-3, began recording elevated VOC readings at approximately 01:30 AM. Possible cause may be due to an issue with the VOC sensor on the monitor. RTU-9 will be inspected, and serviced as necessary, before being re-deployed.

Michael Pisani & Associates

Texas Brine, L.L.C.

Assumption Parish, Louisiana

Daily Field Report

Report By: Patrick Ritchie

Date: 5/8/2013

Company: MP&A

Work Order # 80-05

Health and Safety Meeting YES NO

Weather: 80F Clear and sunny

<u>Personnel</u>	<u>Company</u>	<u>Job Title</u>
<u>Ed Graham</u>	<u>MP&A</u>	<u>Environmental Scientist</u>
<u> </u>	<u> </u>	<u> </u>
<u> </u>	<u> </u>	<u> </u>
<u> </u>	<u> </u>	<u> </u>
<u> </u>	<u> </u>	<u> </u>
<u> </u>	<u> </u>	<u> </u>
<u> </u>	<u> </u>	<u> </u>

Site Activities: Start Time 8:45 End Time 17:00

Equipment On-site:

Daily Activity:
Collect laboratory samples from MRAA wells

Estimated time of completion:
On-going

Proposed schedule:
Conduct in-situ monitoring surface water transect and industrial water well locations
Measure water level for the industrial water wells and MRAA wells
Measure pressure and water level at TBC Geoprobe locations
Collect laboratory samples from the industrial water wells
Collect laboratory samples from surface water transect locations

On-going

Initials: PMR