

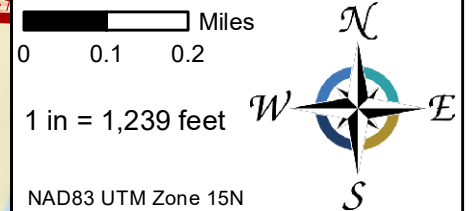
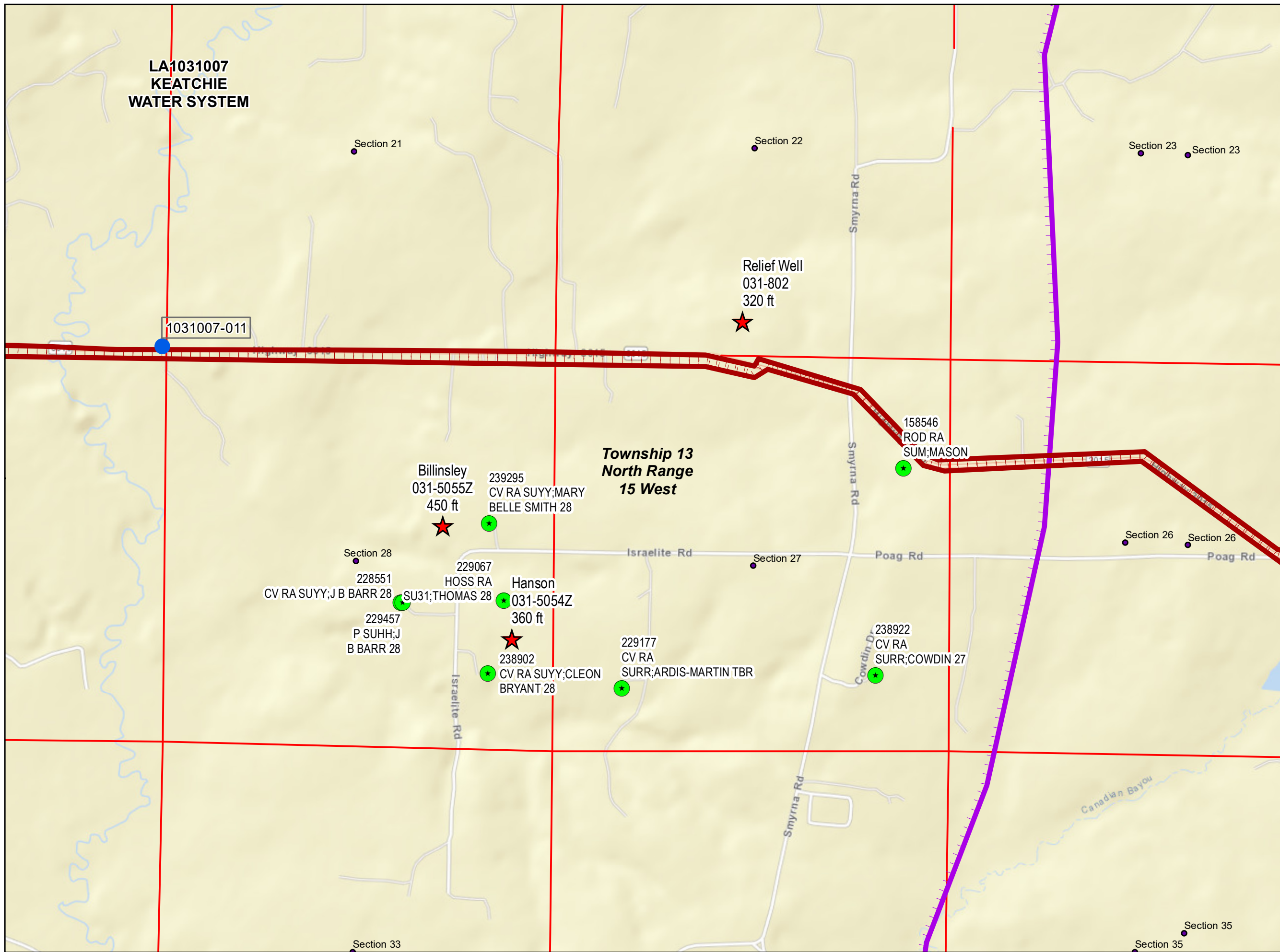
**LA1031007
KEATCHIE
WATER SYSTEM**

**Public wells near
DeSoto**

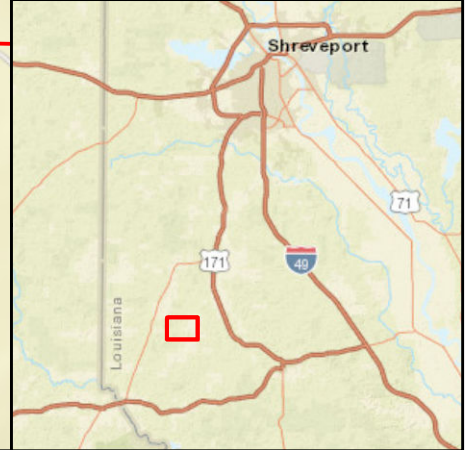
10 Aug 2018

Legend

- ★ Water well related to gas presence (3)
- Oil/Gas wells (8)
- PWS active wells (1)
- plss_sections_LGS_2002 (11)
- LA1031006 - Grand Cane (0)
- LA1031030 - DeSoto Dist 1 (1)
- LA1031007 - Keatchie (1)
- PLSS Section polygons (17)
- PLSS Township and Range polygons (1)



This document may only be reproduced in its entirety. Questions may be directed to:
 Engineering Services Section
 Louisiana Department of Health and Hospitals
 Office of Public Health
 Telephone: 225.342.7499



**Township 13
North Range
15 West**

Relief Well
031-802
320 ft ★

158546
ROD RA
SUM;MASON ●

239295
CV RA SUYY;MARY
BELLE SMITH 28 ●

Billinsley
031-5055Z
450 ft ★

229067
HOSS RA
SU31;THOMAS 28 ●

Hanson
031-5054Z
360 ft ●

238902
CV RA SUYY;CLEON
BRYANT 28 ●

229177
CV RA
SURRE;ARDIS-MARTIN TBR ●

238922
CV RA
SURRE;COWDIN 27 ●

228551
CV RA SUYY;J B BARR 28 ●

229457
P SUHH;J
B BARR 28 ●