

Environmental Consultants
 91 Apollo Road
 Scott, Louisiana 70583
 (337) 261-1963 Fax (337) 261-1953

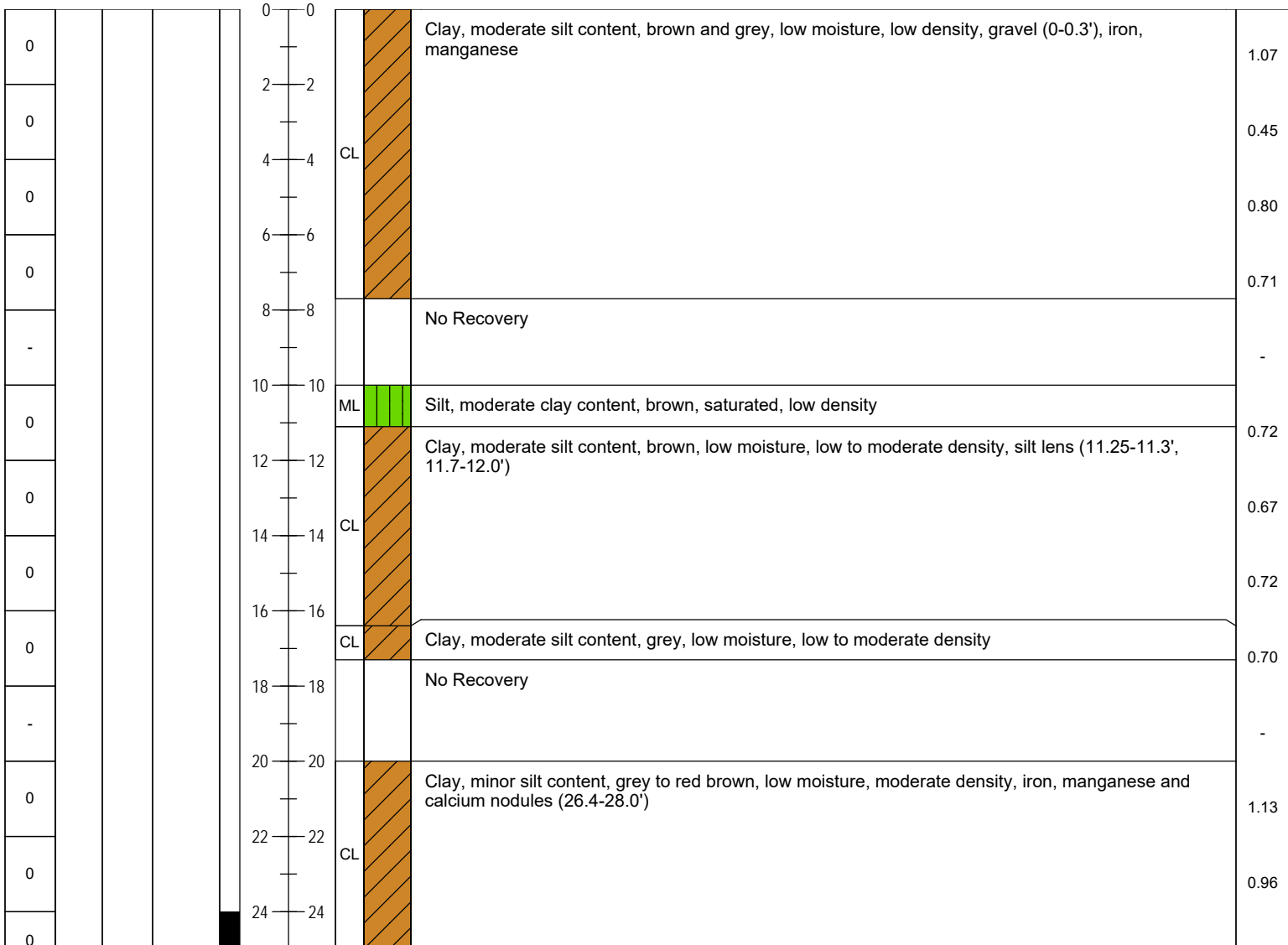


BORING No. DB4

Harold J. Guidry, et al v. BP America
 Production Company, et al

PROJECT NAME		DATE STARTED	08-02-16
PROJECT NUMBER	1009.A34	DATE COMPLETED	08-02-16
LOCATION	Breaux Bridge, LA	CASING TYPE/DIAMETER	N/A
DRILLING METHOD	Sonic Rig	SCREEN TYPE/SLOT	N/A
SAMPLING METHOD	4" X 10' cores	SAND PACK/TYPE	N/A
GROUND ELEVATION	N/A	GROUT TYPE/QUANTITY	Portland Bentonite Slurry
TOP OF CASING	N/A	DRILLED DEPTH TO WATER	40 Feet BLS
LOGGED BY	Donald J. Watts	TOTAL DEPTH	90 Feet BLS
REMARKS	Field Coordinates: 30.25576, -91.94086 +/- 9'		

PID (ppm)	SCREENED INTERVAL	SAMPLE TIME	SAMPLE ID.	EXTENT	DEPTH (FT BLS)	U.S.C.S	GRAPHIC LOG	LITHOLOGIC DESCRIPTION	CONDUCTIVITY (mS/cm)
-----------	-------------------	-------------	------------	--------	----------------	---------	-------------	------------------------	----------------------



Environmental Consultants
 91 Apollo Road
 Scott, Louisiana 70583
 (337) 261-1963 Fax (337) 261-1953

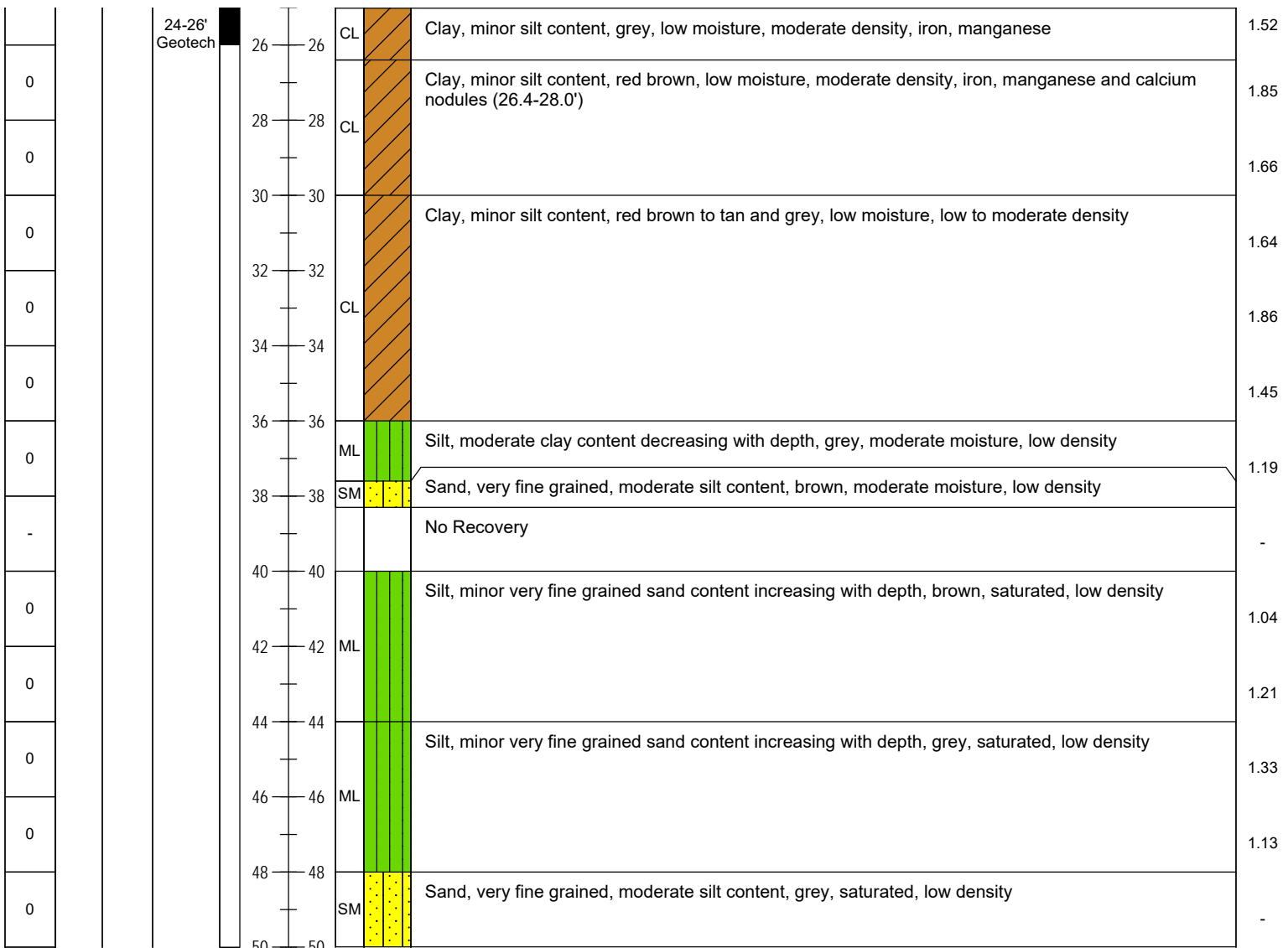


BORING No. DB4

Harold J. Guidry, et al v. BP America
 Production Company, et al

PROJECT NAME		DATE STARTED	08-02-16
PROJECT NUMBER	1009.A34	DATE COMPLETED	08-02-16
LOCATION	Breaux Bridge, LA	CASING TYPE/DIAMETER	N/A
DRILLING METHOD	Sonic Rig	SCREEN TYPE/SLOT	N/A
SAMPLING METHOD	4" X 10' cores	SAND PACK/TYPE	N/A
GROUND ELEVATION	N/A	GROUT TYPE/QUANTITY	Portland Bentonite Slurry
TOP OF CASING	N/A	DRILLED DEPTH TO WATER	40 Feet BLS
LOGGED BY	Donald J. Watts	TOTAL DEPTH	90 Feet BLS
REMARKS	Field Coordinates: 30.25576, -91.94086 +/- 9'		

PID (ppm)	SCREENED INTERVAL	SAMPLE TIME	SAMPLE ID.	EXTENT	DEPTH (FT BLS)	U.S.C.S	GRAPHIC LOG	LITHOLOGIC DESCRIPTION	CONDUCTIVITY (mS/cm)
-----------	-------------------	-------------	------------	--------	----------------	---------	-------------	------------------------	----------------------



Environmental Consultants
 91 Apollo Road
 Scott, Louisiana 70583
 (337) 261-1963 Fax (337) 261-1953

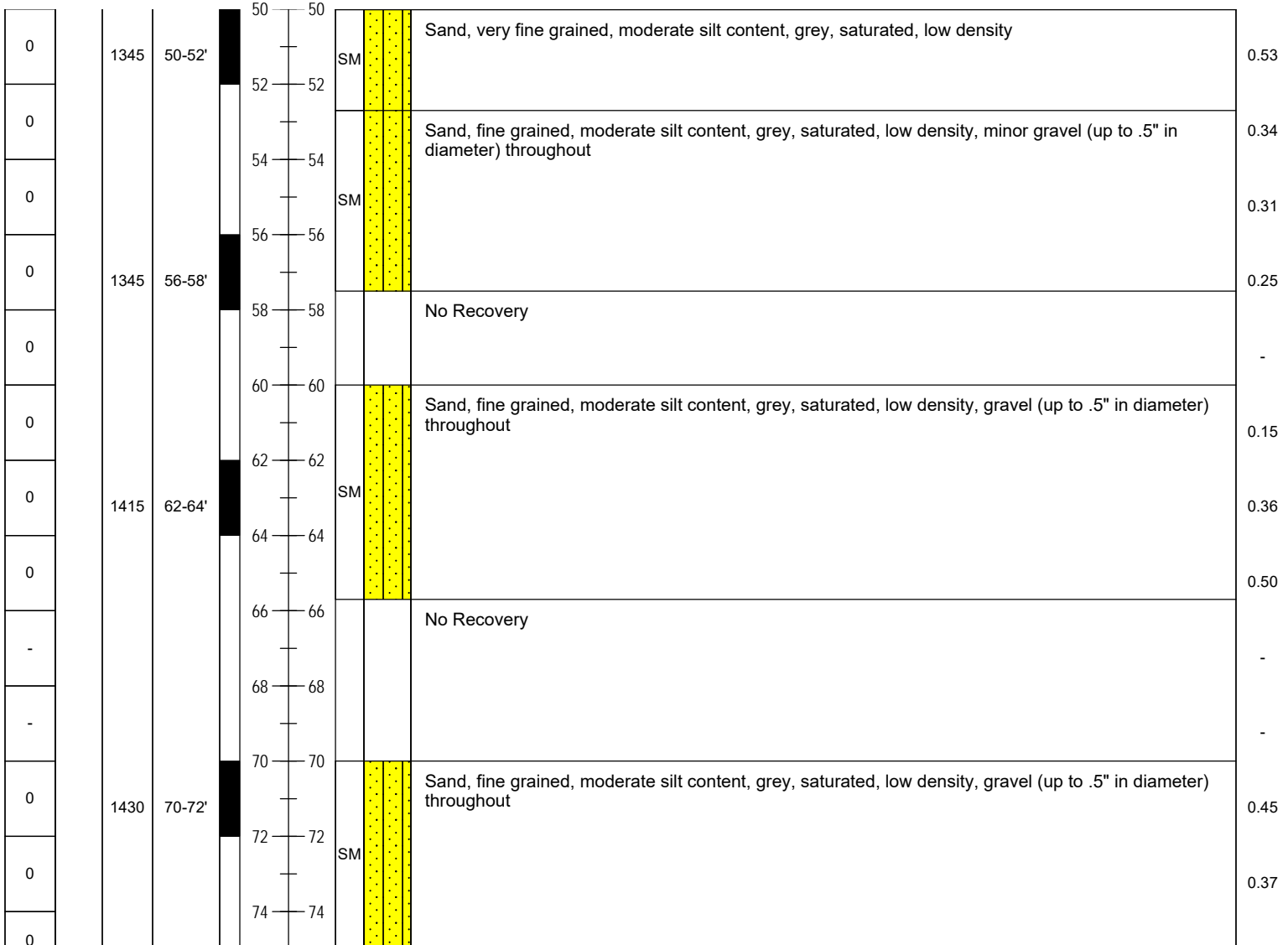


BORING No. DB4

Harold J. Guidry, et al v. BP America
 Production Company, et al

PROJECT NAME	DATE STARTED	08-02-16
PROJECT NUMBER 1009.A34	DATE COMPLETED	08-02-16
LOCATION Breaux Bridge, LA	CASING TYPE/DIAMETER	N/A
DRILLING METHOD Sonic Rig	SCREEN TYPE/SLOT	N/A
SAMPLING METHOD 4" X 10' cores	SAND PACK/TYPE	N/A
GROUND ELEVATION N/A	GROUT TYPE/QUANTITY	Portland Bentonite Slurry
TOP OF CASING N/A	DRILLED DEPTH TO WATER	40 Feet BLS
LOGGED BY Donald J. Watts	TOTAL DEPTH	90 Feet BLS
REMARKS Field Coordinates: 30.25576, -91.94086 +/- 9'		

PID (ppm)	SCREENED INTERVAL	SAMPLE TIME	SAMPLE ID.	EXTENT	DEPTH (FT BLS)	U.S.C.S	GRAPHIC LOG	LITHOLOGIC DESCRIPTION	CONDUCTIVITY (mS/cm)
-----------	-------------------	-------------	------------	--------	----------------	---------	-------------	------------------------	----------------------



Environmental Consultants
 91 Apollo Road
 Scott, Louisiana 70583
 (337) 261-1963 Fax (337) 261-1953



BORING No. DB4

Harold J. Guidry, et al v. BP America
 Production Company, et al

PROJECT NAME		DATE STARTED	08-02-16
PROJECT NUMBER	1009.A34	DATE COMPLETED	08-02-16
LOCATION	Breaux Bridge, LA	CASING TYPE/DIAMETER	N/A
DRILLING METHOD	Sonic Rig	SCREEN TYPE/SLOT	N/A
SAMPLING METHOD	4" X 10' cores	SAND PACK/TYPE	N/A
GROUND ELEVATION	N/A	GROUT TYPE/QUANTITY	Portland Bentonite Slurry
TOP OF CASING	N/A	DRILLED DEPTH TO WATER	40 Feet BLS
LOGGED BY	Donald J. Watts	TOTAL DEPTH	90 Feet BLS
REMARKS	Field Coordinates: 30.25576, -91.94086 +/- 9'		

PID (ppm)	SCREENED INTERVAL	SAMPLE TIME	SAMPLE ID.	EXTENT	DEPTH (FT BLS)	U.S.C.S	GRAPHIC LOG	LITHOLOGIC DESCRIPTION	CONDUCTIVITY (mS/cm)
-----------	-------------------	-------------	------------	--------	----------------	---------	-------------	------------------------	----------------------

