



Search entire store here...



GET FREE QUOTE Contractor Program Contact Us

Toll Free: 877-297-0014 Direct: 831-462-8243 Fax: 831-462-8246

SES COVID-19 Update: We are open for business. Solar Electric Supply is part of our Nation's critical infrastructure as defined in the "Memorandum on Identification of Essential Critical Infrastructure Workers During COVID-19 Response", issued by the U.S. Department of Homeland Security on March 19, 2020.

HOME REMOTE OFF-GRID SOLAR MAPPS POLE MOUNTED SOLAR SYSTEMS 400W 24VDC 530Ahr Pole-Mounted Battery Enclosure Solar System



400W 24VDC 530Ahr Pole-Mounted Battery Enclosure Solar System

Availability: Call For Availability

[Request Quote](#)

Features

MAPPS®

Pole Mounted Enclosure Solar Systems



remote off-grid solar panel systems

Specifications

SES MAPPS Pole-Mounted Solar System

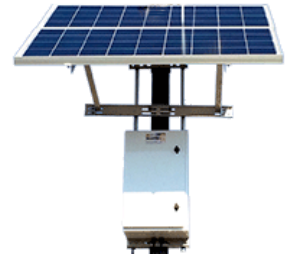
Model Number	MAPPS-380-530-24-POLE
Nominal System Voltage	24 VDC
Solar PV Module	2X SES 4200J 24 Vdc 200 Watts ea.
Solar Module Certifications	UL 1703, Class 1 Division 2, Group A, B, C, D, Class C Fire Rating
PV Module Mount	SPM2-190 side of pole mount
Battery Type	4X Deka Solar 8G8D Gel Cell
Battery Bank Capacity	24V 530 Ahr at 100 hour discharge rate
Enclosure Model	2X AL-POL-2-8G8DN
Enclosure Design	NEMA 3R
Charge Controller	ProStar 30M
Controller Certifications	ETL Listed to UL 1741 & CSA C22.2 No. 107.1-01
MAPPS System Weight w/ Batteries	825 lbs.
Origin	USA
List Price	\$10,805.44

400W 24VDC 530Ahr Pole-Mounted Battery Enclosure Solar System

Reliable Weatherproof Off-Grid Solar System

This highly reliable, durable, and rugged four-battery system is designed to require minimal maintenance with a 20 year design life (with battery replacements approximately every five to seven years). Our systems are assembled and tested following strict QA/QC procedures, and are designed to IEEE Standard 1562: Guide for Array and Battery Sizing in Stand-Alone Photovoltaic (PV) Systems.

MAPPS pole-mounted enclosure solar systems include components with the highest quality standards and qualify for Made in USA, Buy America and ARRA. MAPPS systems are also available with UL Listing or Class I Div 2 approval.



Enclosure solar system designed for long life in harsh weather climates.

400W 24V Pole-Mounted 4-Battery Enclosure Solar System

Solar Panel

- High efficiency crystalline silicon
- Meets JPL Block V durability criteria
- Tempered glass and aluminum frame
- Conduit ready junction box or MC 4 connectors



[2x 200W 24V Solar Panels w/ mount](#)

Gel Cell Sealed Batteries

- Sealed maintenance-free
- Excellent deep-cycling performance
- Immobilized electrolyte, non-spillable
- Transports easily and safely



[4x 256Ahr Sealed Gel Cell Batteries](#)

System Enclosure

- Mill finish Aluminum construction
- Powder coated enamel white option
- Filtered louvered vents
- Insulation Kit for battery optional
- Controller mounted on DIN rail with array/battery/load breakers



Charge control load center with pre-cut color coded wiring harness included.



Optional UL Listing Available



[Pole-Mounted Battery Enclosure Solar Systems](#)

Balance of System Components

- Heavy duty aluminum mounting structure
- Controller with low voltage battery protection
- Optional 130 and 170 MPH available
- Color-coded, pre-cut wiring harness
- Easy-to-follow manual/system schematics



MAPPS™
We can pre-wire many options.

Optional Components

- DC to DC converters for 12, 24, 48 VDC loads
- DC to AC inverter for 120 VAC loads
- Radio shelf for additional load equipment
- Pre-wired PoE Power over Ethernet injectors

Manufacturer Specification Sheets

	Size: (240.13 KB) MAPPS 380-530-24 400W Pole-Mounted Battery Enclosure Solar System Datasheet
	Size: (189.33 KB) MAPPS 380-530-24 Pole-Mounted Battery Enclosure Solar System Drawings
	MAPPS Solar Panel System Design Guide Size: (317.13 KB)

MAPPS Solar Battery Enclosure System Applications

No matter what extreme environment on Earth: arctic, desert, coastal or tropical, this corrosion-resistant solar power system is ideal for your next remote off-grid solar project.

Solar battery powered examples can include:

- Aprisa SR+ Radio
- Critical infrastructure
- Maxon Radio
- Spotter Radar c1050 30vdc
- RFID Rail Car Reader active
- Siklu Wireless Radio Mid 50vdc
- DNGP Controller
- DTMF Decoder
- UPS battery backup systems
- Raven RV50



Contact us with your solar powered application today! OEM, Distributor, System Integrator, Government, VAR, Dealer, Contractor, MWBE, International, and Reseller discounts available.

Call toll-free: (877) 297-0014

Details

MAPPS 400W 530Ahr Pole-Mounted Battery Enclosure Solar System Review

Compression latches

Milled aluminum enclosure

Pre-wired charge / load center

Filtered vents

Stainless steel hinges & hardware

Up to two 8G8D sealed gel batteries

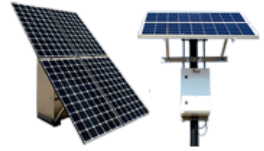
MAPPS®
Pole Mounted Enclosure Solar System

shown with powder coated enamel white option

Solar Electric Supply specializes in supplying **dealer, contractor, government** and **industrial** accounts worldwide with **reliable, cost-effective Class 1 Division 2 solar electric power solutions.**

[Pad Mounted Solar Systems](#) · [Contractor Discounts Available](#)

[Contact us](#) toll-free: **(877) 297-0014** for expert assistance and wholesale prices for the SES MAPPS **400W 24 Volt Pole-Mounted Enclosure Solar System.**



[Pole & Pad Mounted Enclosure Solar Systems](#)

- [Home](#)
- [Residential Solar Systems](#)
- [Commercial Solar Systems](#)
- [Solar Battery Backup Systems](#)
- [Remote Industrial Solar](#)
- [Solar Panels](#)
- [Solar System Design](#)
- [Solar Contractors](#)
- [Solar Panel Mounts](#)
- [Solar Inverters](#)
- [Solar LED Lighting](#)
- [Solar Rebates](#)
- [Solar Links](#)
- [Solar Batteries](#)
- [Solar Charge Controllers](#)
- [Contact Us](#)

All images and content are the sole property of Solar Electric Supply, Inc. © 2020

GOOSE POINT / POINT PLATTE

MARSH CREATION PROJECT

PROJECT COMPLETION REPORT

CWPPRA/State Project No: PO-33

June 10, 2009

BCG **Engineering & Consulting, Inc.**
Excellence in Engineering

PROJECT COMPLETION REPORT

Project Name: Goose Point/Point Platte Marsh Creation Project

CWPPRA/State Project No: PO-33

Report Date: June 10, 2009

By: BCG Engineering & Consulting, Inc.

1. **Project Mangers/Contracting Officer:**

DNR Project Manager.....Andrew Beal(225)342-1952
DNR Field Engineer SupervisorTom Bernard(504)280-4071
DNR Construction Project Manager.....Tom Bernard(504)280-4071
DNR Monitoring Manager.....Melissa Hymel(504)280-4074
Federal Sponsor, U.S.F.W.S.Kevin Roy(337)291-3120
Federal Sponsor, U.S.F.W.S.Daniel Breaux(985)882-2000
(Field Office – Lacombe)

2. **Location and Description of Project as Approved for Construction:**

The Goose Point/Pointe Platte Marsh Creation Project (PO-33) is located in St. Tammany Parish on the north shore of Lake Ponchartrain, approximately five miles south of Lacombe, Louisiana. The fill and borrow sites are located near the confluence of Lake Pontchartrain and Lacombe Bayou. The approximate coordinates of the project areas are as follows: Goose Point – 30° 15’ 58.43” N latitude and 89° 58’ 40.44” W longitude, Point Platte – 30° 15’ 11.63” N latitude and 89° 55’ 17.25” W longitude.

The work site, including the five marsh fill areas and two dredge borrow sites, is only accessible by boat and air boat. A public launch is located on Lake Road (an extension of LA 434) along Bayou Lacombe, approximately 0.5 miles from Lake Ponchartrain and two miles from the marsh areas.

This project created approximately 566 acres of new marshland areas by dredging material from Lake Ponchartrain and disposing into designated on-shore fill areas along the Lake Ponchartrain shore at Goose Point and east of Point Platte. The Goose Point borrow site was the source of materials being placed into two fill areas, designated as Fill Areas “A” and “B”. The Point Platte Borrow Site was the source of materials being placed into three fill areas designed as Fill Areas “C”, “D”, and “E”. See attached as-built drawings for Fill Areas “A” thru “E” in Appendix A. A total of 49,557 linear feet of earthen perimeter containment dikes, were constructed with in-situ material from inside the perimeters of the five marsh creation areas. The subject dikes were constructed by the use of long reach marsh buggy backhoes utilizing from one to three lifts.

3. **Final, As-built Features, Boundaries, and Resulting Acreage:**

The principle features include:

Fill Area “A” – approximately 479,903 cubic yards of dredge material was placed in Fill Area “A” creating approximately 64 acres of new marsh and some 23 acres of marsh nourishment.

Fill Area “B” – approximately 949,700 cubic yards of dredge material was placed in Fill Area “B” creating approximately 125 acres of new marsh and some 77 acres of marsh nourishment.

Fill Area “C” – approximately 863,176 cubic yards of dredge material was placed in Fill Area “C” creating approximately 120 acres of new marsh and some 49 acres of marsh nourishment.

Fill Area “D” – approximately 149,370 cubic yards of dredge material was placed in Fill Area “D” creating approximately 13 acres of new marsh and approximately 6 acres of marsh nourishment.

Fill Area “E” – approximately 658,770 cubic yards of dredge material was placed in Fill Area “E” creating approximately 95 acres of new marsh, not including the marsh nourishment area.

4. **Key Project Cost Elements:**

CWPPRA PROJECT

<u>Completion</u>	<u>Cost Estimates</u>	<u>Cost Incurred as of Construction</u>
Construction	\$12,550,729.00	\$12,995,598.75
E&D	\$1,241,993.00	\$1,241,993.00
Land Rights	\$10,428.00	\$10,428.00
Monitoring	0.00	0.00
O&M	\$736,767.00	\$736,767.00
TOTAL	\$14,539,917.00	\$14,984,786.75

5. **Items of Construction:**

Item	Work	Original Bid Quantity	Unit	Original Unit Price (\$)	Original Amount (\$)	Final Quantity	Final Bid Unit Price (\$)	Final Amount	Percent Over
1	Mob and Demob	1	L.S.	1,650,000.00	1,650,000.00	1	1,650,000.00	1,650,000.00	0
2	Hyd. Dredging	3,008,700	C.Y.	3.35	10,079,145.00	3,092,905	3.35	10,361,231.75	+0.028
3	Containment Dikes	49,557	L.F.	12.00	594,684.00	49,732	12.00	596,784.00	+0.003
4	Grade Stakes	269	EA..	100.00	26,900.00	269	100.00	26,900.00	0
5	Construction Surveys	1	L.S.	200,000.00	200,000.00	1	200,000.00	200,000.00	0
6	Vinyl Sheet Pile	0	L.F.	0.00	0.00	620	237.40	147,188.00	0
7	Floatation Channels	0	L.S.	0.00	0.00	1	L.S.	13,495.00	0
	TOTAL				12,550,729.00			12,995,598.75	0.035

6. **Construction and Construction Oversight:**

<u>Item</u>	<u>Construction Unit</u>
Prime Construction Contractor	Weeks Marine, Inc.
Surveyor	Michael Baker Surveyor, Inc.
Subcontractor	Wilco, Inc.
Subcontractor	Shoreline Construction, LLC

Original Construction Contract:	\$12,550,729.00
Change Orders:	Change Order No. 1 - \$431,374.00
	Change Order No. 2 - \$13,495.00
Over/Under Runs:	
Item 2: +84,205 cubic yards	
Item 3: +175 linear feet	
Damages: NONE	
Total Construction Contract Cost:	\$12,995,597.75
Construction Oversight: BCG Engineering & Consulting, Inc.	(E) \$197,687.00

7. **Major Equipment Used:**

Dredge *Borinquen*, dredge *Venture*, dredge *Tom James*; booster pump barge, quarter boat, spud barge with Manitowac 4,600, spud barge with ring crane, four equipment barges, seven track-hoes (mounted on marsh buggies); three push boats, two crew boats, two air boats; one dump site building, two flexi-float barges, and push boat with Hitachi EX100 and EX60 excavators, vibratory plate hammer, all terrain forklift, and 180-ton truck crane.

8. **Discuss Construction Sequences and Activities, Problems Encountered Solutions to Problems, Etc.:**

- The quarter boat, B-405, was the first equipment to arrive on site, on April 1, 2008. The survey party followed and began to layout and mark Fill Areas “A”, “B”, “C”, “D”, and “E”. Following layout work the subcontractor, Wilco, Inc., with five track-hoe mounted marsh buggies began construction of containment dike system in Fill Area “C”. The remaining dike systems were constructed in the following order, Fill Areas “D”, “E”, “B”, and “A”.
- The 24-inch dredge *Borinquen* arrived on site May 18, 2008 and began dredging on May 26, 2008 from the Point Platte borrow site discharging into Fill Area “E”. On June 14, 2008 the discharge line was temporarily removed from Fill Area “E” to allow material to settle and decant excess water. The discharge line was moved into Fill Area “D” and dredging continued until Fill Area “D” was complete. The discharge line in Area “D” was then moved to Fill Area “E”. Dredging operations were resumed in Area “E”. Area “E” filling was completed on July 14, 2008.
- The booster barge arrived to assist the *Borinquen* due to heavier than anticipated materials, shells, and hard pleistocene clay being encountered. Progress was slow due to many mechanical

and line breakdowns with the *Borinquen* equipment. The booster pump barge was placed in line with the *Borinquen* and dredging resumed into Fill Area “C”.

- The dredge *Venture* replaced the *Borinquen* and began filling Area “C” on August 15, 2008. The dredge *Borinquen* and booster barge was moved from the Point Platte borrow site to the Goose Point borrow site and began dredging into Fill Area “B” on August 19, 2008. The dredge *Venture* began dredging material from the Point Platte borrow site into Fill Area “C”. Slow pumping progress continued due to frequent stoppages of both dredges.
- All equipment was shut down and secured from August 22 to 25, 2008 for Tropical Storm Fay. All equipment again shutdown from August 30, 2008 to September 6, 2008 for Hurricane Gustav. The dredge *Venture* returned to Goose Point borrow site and began placing material into Area “A” on September 8, 2008. The dredge *Borinquen* remained idle. On September 11, 2008 the dredge *Venture* stopped pumping due to the high water levels over the marsh due to Hurricane Ike. The dredge resumed pumping on September 15, 2008, but only pumped 14 hours. The dredge was plagued with breakdowns between September 16 and 28, 2008 and only operated for a total of 40 hours in this 13-day period.
- The dredge *Tom James* arrived on site September 28, 2008 and began dredging material from Goose Point borrow site discharging into Fill Area “A”. The dredge *Borinquen* was parked at site. The dredge *Venture* relocated to Point Platte borrow area and began placing material into Area “C”. Placement progress improved greatly with the *Tom James*.
- By letter from James F. Boggs, dated September 19, 2008, Department of Interior, the dredging window as increased by 31 days from 30 days, September 30 to October 31, 2008.
- Contractor was ordered by the DNR to construct 175 linear feet of additional dikes to prevent dredge effluent from entering Lake Pontchartrain.
- The placement of dredged fill in Area “C” by the *Venture* and Area “A” by the *Tom James* was accepted as complete by BCG (Ike Mayer) with consultation from Mr. T. L. Bernard of DNR on October 4, 2008. The *Tom James* then commenced placing material into Area “B” on October 5, 2008. The placement into Area “B” was completed and accepted on October 25, 2008 by BCG (Ike Mayer) after consulting with Mr. Bernard of DNR. This completed all dredging operations to place material into the five marsh receiving areas.
- Final post-dredge surveys were performed by T. Baker Smith, the Point Platte borrow site surveys were performed on October 9, 2008, and the Goose Point borrow site surveys were performed on October 29, 2008.
- Due to the erosion of the shoreline dikes of marsh areas “D” and “E”, the Contractor was directed by DNR to reinforce the earthen dikes in four locations with 620 linear feet of vinyl sheet piling. Subcontractor, Shoreline Construction, began driving vinyl sheet pile on January 10, 2009 all sheet pile work was completed on January 27, 2009.
- All construction work was completed on January 27, 2009. The final inspection was held on February 12, 2009 and the project was accepted as substantially completed.

9. **Construction Change Orders and Field Changes:**

- Field change – extension of dredging window from September 30, 2008 to October 31, 2008 due to time lost from equipment shut downs, and three weather events, Tropical Storm Fay, Hurricanes Gustav and Ike.
- Change Order 01 – Added 84,205 cubic yards of dredged material; modifications to dike configurations, necessitating an additional 175 linear feet of dike and added 620 linear feet of vinyl sheet pile closures in Fill Areas “D” and “E”.
- Change Order 02 – Time extension of eight days to contract and added costs for subcontractor to complete floatation channels for sheet pile closures. Contactor could not perform work due to extremely low tides; time granted while waiting for tides to rise. Also funding for additional cost incurred by subcontractor construction floating access to each dike location.
- Bi-weekly progress meetings were held at the inspector’s field office at which time filed site inspections were made with all sponsor representative present, minor changes were discussed and resolved. All major concerns and/or request for changes to the contract specifications were addressed by written correspondence to the BCG Engineering and Consulting, Inc. who submitted their recommendations to the CWPPRA representative coordinator for approvals.

10. **Pipeline and Other Utility Crossing:**

There was no dredging work occurring over these pipelines.

<u>Structure</u>	<u>Representative to Contact</u>
Transcontinental Gas Pipeline, eight inches	Floyd Dominique (225)687-3900, ext. 261
Southern Natural Gas Company, eight inches	Kurt Cheramie (504)868-6785

11. **Safety and Accidents:**

No loss time accidents were reported.

12. **Significant Construction Dates:** Purchase Order No. 3305474.

Bid Opening	February 21, 2008
Construction Contract Award	March 4, 2008
Pre-construction Conference	March 11, 2008
Notice to Proceed	April 22, 2008
Mobilization Began	April 1, 2008
Dredge Borinquen Mobilized	May 18, 2008
Construction Started	April 1, 2008
Dredge Venture Mobilized	August 15, 2008

Dredge Tom James Mobilized	September 28, 2008
Extended Dredging Window – 30 days	September 19, 2008
Dredge Work Completed	October 25, 2008
Added Sheet Pile, Dike Work Started.....	December 28, 2008
Construction Completed	January 27, 2009
Final Acceptance.....	February 12, 2009
Demobilization Completed	January 30, 2009

13. **Appendices:**

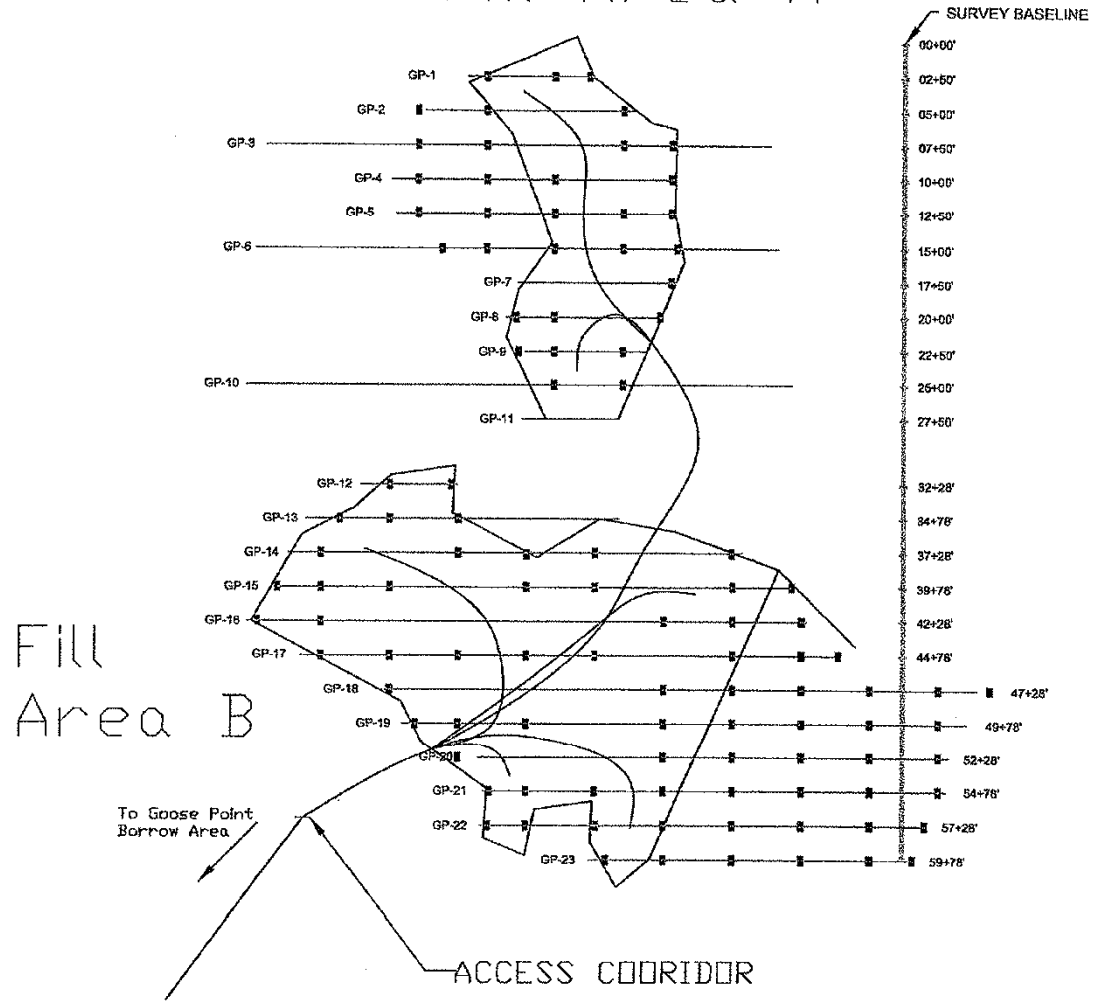
- A – Final Elevations in Marsh Areas
- B – Selected Construction Photographs
- C – Final Surveys
- D – USF & W Letter Extending Dredging Period
- E – Change Orders

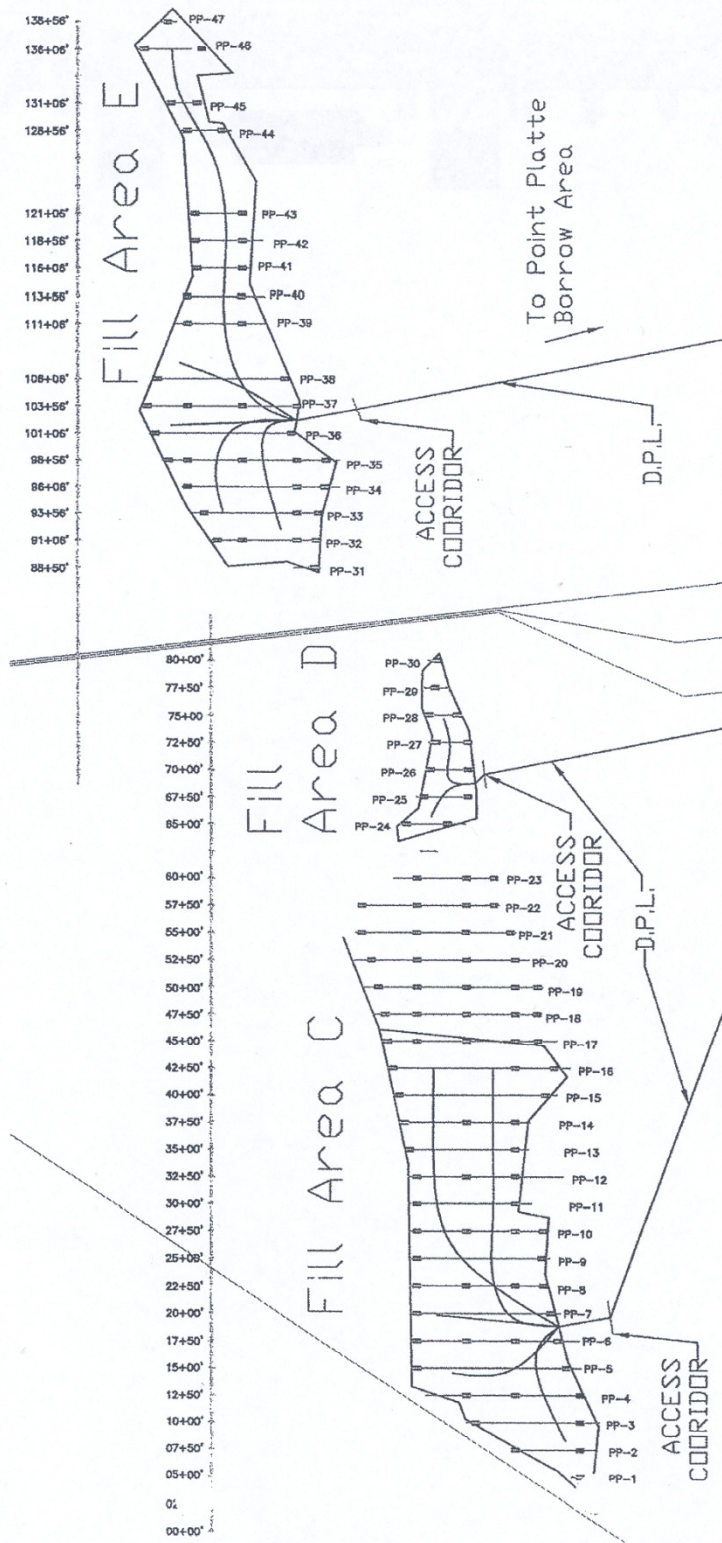
Signed: _____

Emmett J. (Ike) Mayer, Jr., P.E.
BCG Engineering & Consulting, Inc.

APPENDIX A

Fill Area A





Weeks Marine Inc.

Goose Point / Point Platte Marsh Creation Project
Fill Area A Final Elevations $\bar{2.593}$
11/6/2008

WMI Stake #	Elevation
GP101	2.15
GP102	1.80
GP103	2.57
GP201	3.15
GP202	2.19
GP203	3.00
GP204	2.34
GP301	2.75
GP302	2.48
GP303	3.10
GP304	2.89
GP305	2.95
GP401	2.79
GP402	2.30
GP403	2.91
GP404	2.85
GP405	2.80
GP501	2.40
GP502	2.27
GP503	2.71
GP504	2.81
GP505	2.35
GP601	1.89
GP602	2.33
GP603	2.88
GP604	2.76
GP605	2.39
GP701	1.90
GP702	2.58
GP703	3.12
GP801	2.15
GP802	2.65
GP803	2.73
GP804	2.88
GP901	2.91
GP902	2.70
GP903	1.81
GP1001	3.06
GP1002	2.83

TOTAL $101.13 \div 39 = \text{AVG. } 2.593$

Weeks Marine Inc.

Goose Point / Point Platte Marsh Creation Project

Fill Area B Final Elevation Readings = +3.210

WMI Stake #	Elevation
GP1201	2.58 ✓ .01
GP1202	2.14
GP1301	2.75
GP1302	3.45
GP1303	1.75
GP1401	2.84
GP1402	3.75 ✓ .02
GP1403	3.95
GP1404	4.12
GP1405	2.85
GP1406	3.05
GP1407	3.25
GP1501	3.04
GP1502	2.95
GP1503	1.75
GP1504	1.09
GP1505	3.85
GP1506	3.67
GP1507	3.28
GP1508	3.25
GP1509	2.97
GP1601	3.37
GP1602	3.15
GP1603	2.71
GP1604	3.76
GP1605	3.81
GP1606	3.75
GP1607	3.98
GP1608	5.35
GP1609	3.89
GP1701	2.75
GP1702	3.25
GP1703	3.55
GP1704	4.25
GP1705	3.87
GP1706	3.89 ✓ .05
GP1707	4.15 ✓ .02
GP1708	3.71
GP1709	2.96
GP1801	3.68

40

TOTAL ELEV. of 88 Points
 = +282.53 + 88 =
 AVG. +3.210

GP1802	2.76
GP1803	2.69
GP1804	2.74
GP1805	2.81
GP1806	2.73
GP1807	2.82
GP1808	2.45
GP1809	3.15
GP1810	3.67
GP1901	3.95
GP1902	3.12
GP1903	3.26
GP1904	3.75
GP1905	3.98
GP1906	3.95
GP1907	3.87
GP1908	3.85
GP1909	3.67
GP2001	3.37
GP2002	3.48
GP2003	3.73
GP2004	3.71
GP2005	3.91
GP2006	3.84
GP2007	3.56
GP2008	3.41
GP2101	2.95
GP2102	3.02
GP2103	3.08
GP2104	2.97
GP2105	2.45
GP2106	2.48
GP2107	2.55
GP2108	2.45
GP2201	2.99
GP2202	3.15
GP2203	2.86
GP2204	2.95
GP2205	3.12
GP2206	3.35
GP2207	3.35
GP2208	3.25
GP2301	2.52
GP2302	2.21
GP2303	2.53
GP2304	2.69
GP2305	2.37

77.92

147.52

GP2306

2.85

2.85

282.53

88

← 3.210

182.8 ÷ 85 = 2.15

AREA C = 2.202 Ft.

PP					
101	3.4	1001	3	1801	2.7
201	3.5	1002	3.3	1802	2.5
202	3.4	1003	3.5	1803	2.6
301	1.8	1004	3.2	1804	2.7
302	3.2	1101	3.1	1805	2.4
303	3.9	1102	3.4	1901	2.1
401	2.9	1103	3.2	1902	2.5
402	2.2	1201	2.8	1903	2.2
403	3	1202	2.9	1904	2.4
501	3.1	1203	3.3	1905	2.1
502	3.1	1301	3	2001	2.2
503	3.3	1302	3.6	2002	2.2
504	3.4	1303	3.1	2003	2.3
601	3.2	1401	2.9	2004	2.4
602	3.1	1402	3.4	2101	1.9
603	3.2	1403	2.9	2102	2.2
604	3.4	1501	2.7	2103	2.4
701	3.2	1502	3.1	2104	2.2
702	2.9	1503	2.7	2201	2.1
703	3.1	1504	2.9	2202	2.2
704	3.2	1601	2.6	2203	2
801	2.9	1602	2.7	2204	2.3
802	3.3	1603	2.7	2301	2.6
803	3.3	1604	2.4	2302	2.4
804	2.8	1701	2.4	2303	2.1
901	2.7	1702	2.6		
902	3.3	1703	2.2		
903	3.4	1704	2.6		
904	3.3	1705	2.4		

91

90.5

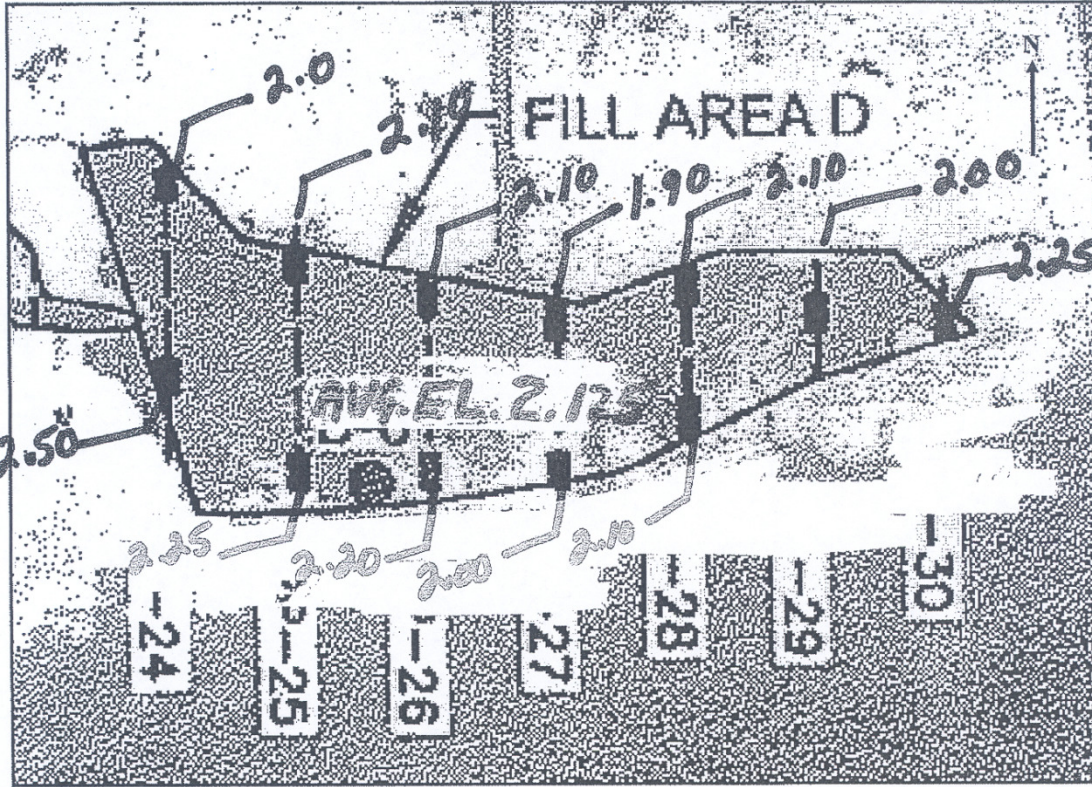
(29)

84.6

57.7 (25)

(25)

DATE: 7-25-08



MARSH FILL AREA D - WORK PROGRESS

ITEM	DESCRIPTION	LOCATION 1	LOCATION 2	LOCATION 3	LOCATION 4	TOTAL COMPLETED
A.1	BEGIN TIME PUMPING					
A.2	END TIME PUMPING					
A.3	PIPE END BETWEEN TRANSECTS	P & P				
A.4	PIPE END NEAREST STAKE FROM W OR S					
A.5	ESTIMATED PERCENTAGE OF AREA COMPLETED					
A.6	ESTIMATED CUBIC YARDAGE PLACED					
A.7	TOTAL AREA (%)					
A.8	TOTAL YARDAGE PLACED					

*Survey results of ELEVATION FOR Fill Area "D"
 is AVG. EL. 2.125 for 28 DAY Settlement Survey*

$$99.7 \div 47 = 2.121$$

AREA E = 2.121 FT.

POINT PLATTE			
3101	2.2	3804	2.2
3201	2.3	3901	2.2
3202	2.1	3902	2.3
3203	2.2	4001	2.5
3204	2.3	4002	2.2
3301	2.1	4101	2.1
3302	2.3	4102	2.2
3303	2.3	4201	2.1
3304	2.2	4202	2.2
3401	2.5	4301	2.1
3402	2.3	4302	2.2
3403	2.2	4401	1.8
3404	2.3	4402	1.7
3501	2.4	4501	1.5
3502	2.3	4502	1.6
3503	2.1	4601	1.8
3504	2.2	4602	1.6
3505	2.3	4701	1.2
3601	2.5		
3602	2.1		
3603	2.2		
3604	2.4		
3701	2.2		
3702	2.3		
3703	2.1		
3704	2.2		
3801	2.1		
3802	2.2		
3803	2.3		

9)

65.0

34.5

(10)

APPENDIX B

GOOSE POINT/POINTE PLATTE MARSH
FILL AREA A



Showing perimeter diking
FILL AREA B



Showing perimeter diking

GOOSE POINT/POINTE PLATTE MARSH
FILL AREA C



Showing perimeter diking
FILL AREA D



Showing perimeter diking

GOOSE POINT/POINTE PLATTE MARSH
FILL AREA E



Showing perimeter diking
GOOSE POINT/POINTE PLATTE MARSH
POINT PLATTE BORROW AREA



Dredge Borinquen (background), booster pump barge and anchor barge

GOOSE POINT/POINTE PLATTE MARSH
MARSH LONG ARM BACK-HOE



Construction Perimeter Diking
GOOSE POINT/POINTE PLATTE MARSH
FILL AREA C



Placing dredged material

GOOSE POINT/POINTE PLATTE MARSH
DREDGE 24-INCH DISCHARGE LAND LINE



Placing dredged material

APPENDIX C



412 South Van Avenue Houma, Louisiana 70363 • Post Office Box 2266 Houma, Louisiana 70361
Main Line: 985.868.1050 • Toll Free: 1.866.357.1050 • Fax: 985.868.5843 • Online: www.tbsmith.com

November 6, 2008

Mr. Ronnie Rhodes
Weeks Marine, Inc.
304 Gaille Drive
Innwoods Business Park
Covington, LA 70433

Dear Mr. Rhodes:

**Re: Goose Point-Pointe Platte Marsh Creation (PO-33)
Goose Point Post-Dredge Survey**

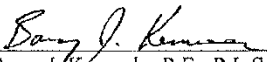
We have completed processing our final survey of the Goose Point Borrow Area for the above referenced project. Attached is a table summarizing the final pay volumes that we have calculated for this area.

The final pay volume of 1,388,192 c.y. was determined by using survey data from your Pre-Dredge survey (8/30/08) and our Post-Dredge survey taken last week (10/29/08). This was calculated by taking the prismoidal volume between these two surveys using all survey data contained within the borrow area boundary.

Hard copies of the point files and drawings will be forwarded to you by mail. If you have any questions, please feel free to call me at 985-868-1050.

Sincerely yours,

T. BAKER SMITH, INC.


Barry J. Kennedy, P.E., P.L.S.

BJK/pdb

Enc.

0812933

PLANNING DESIGN CONSTRUCTION MANAGEMENT OPERATIONS COMPLIANCE

Goose Point - Point Platte Marsh Creation (PO-33)

Goose Point Borrow Area - Final Volumes

Pay Volumes:

Base Survey	Comparison Survey	Cut (c.y)	Fill (c.y)	Desc.
8/30/08 (Weeks)	10/29/08 (TBS)	1,388,192	892	Borrow Area boundary

Total Cut:	1,388,192
------------	-----------



Barry J. Kennedy
11/6/08

Prepared By:



11/6/2008



412 South Van Avenue Houma, Louisiana 70363 • Post Office Box 2266 Houma, Louisiana 70361
Main Line: 985.868.1050 • Toll Free: 1.866.357.1050 • Fax: 985.868.5843 • Online: www.tbsmith.com

October 21, 2008

Mr. Ronnie Rhodes
Weeks Marine, Inc.
304 Gaille Drive
Innwoods Business Park
Covington, LA 70433

Dear Mr. Rhodes:

**Re: Goose Point-Pointe Platte Marsh Creation (PO-33)
Point Platte Post-Dredge Surveys**

We have completed processing our final survey of the Point Platte Borrow Area for the above referenced project (performed on 10/09/08). It is understood that LDNR has approved your Pre and Post Hurricane Gustav surveys and we have therefore included these surveys in our final volume calculations. Attached is a summary of the final pay volumes that we have calculated for this area.

The Pre-Gustav volume of 1,580,468 c.y. was calculated using survey data from our Pre-Dredge survey (4/24/08) and your survey taken just before Hurricane Gustav (8/29/08). This was calculated by taking the prismoidal volume between these two surveys using all survey data within the borrow area boundary. We attempted to use this same boundary for the Post-Gustav volumes but noticed excessively large fill volumes between your post-storm survey and our final survey. Rather than compute the post-Gustav volumes for the entire borrow area, we decided to only analyze the area that was dredged after the storm. This allowed for a more accurate representation of a true cut volume without having to account for misleading Fill volumes. We have also included the total Cut/Fill Volume between our Pre-Dredge survey (4/24) and Post-Dredge survey (10/09).

We will be sending you final a final drawing and a point file for submittal to LDNR in the next few days. If you have any questions, please feel free to call me at 985-868-1050.

Sincerely yours,

T. BAKER SMITH, INC.


Barry J. Kennedy, P.E., P.L.S.

BJK/pdb

081293c2

PLANNING DESIGN CONSTRUCTION MANAGEMENT OPERATIONS COMPLIANCE

Goose Point - Point Platte Marsh Creation (PO-33)

Point Platte Borrow Area - Final Volumes

Pay Volumes:

<i>Base Survey</i>	<i>Comparison Survey</i>	<i>Cut (c.y)</i>	<i>Fill (c.y)</i>	<i>Desc.</i>
4/24/08 (TBS)	8/29/08 (Weeks)	1,580,468	2,136	Borrow Area boundary
9/26/08 (Weeks)	10/9/08 (TBS)	124,245	5,160	Dredged Area Only

Total Cut:	1,704,713
------------	-----------

Additional Volumes:

<i>Base Survey</i>	<i>Comparison Survey</i>	<i>Cut (c.y)</i>	<i>Fill (c.y)</i>	<i>Desc.</i>
4/24/08 (TBS)	10/9/08 (TBS)	1,542,709	3,945	Borrow Area boundary
8/29/08 (Weeks)	9/26/08 (Weeks)	14,534	23,605	Dredged Area Only

Prepared By:

 **T. BAKER SMITH**



10/21/2008

APPENDIX D



United States Department of the Interior

FISH AND WILDLIFE SERVICE
616 Cajundome Blvd.
Suite 400
Lafayette, Louisiana 70506



September 19, 2008

Mr. Thomas Bernard
Office of Coastal Protection and Restoration
CERM Building, Suite 309
2045 Lakeshore Drive
New Orleans, Louisiana 70122

Dear Mr. Bernard:

Per our discussion at the September 16, 2008, construction progress meeting for the Goose Point/Point Plate Marsh Creation Project (PO-33), Weeks Marine, Inc. (Weeks Marine) has requested an extension to the hydraulic dredging construction period from September 30, 2008 to October 31, 2008. A hydraulic dredging construction window of May 1, 2008 to September 30, 2008 was stipulated by the U.S. Fish and Wildlife Service (Service) for the PO-33 project to avoid impacts to the threatened Gulf sturgeon. As you are aware, Weeks Marine will not complete hydraulic dredging by September 30, 2008 and have estimated a completion date of October 31, 2008. Hydraulic dredging is presently occurring in Lake Pontchartrain within a designated borrow site.

The Service, after reviewing available data and information regarding Gulf sturgeon use in the vicinity of the borrow site and consulting with the Louisiana Department of Wildlife and Fisheries and the National Marine Fisheries Service, has agreed to extend the hydraulic dredging window to October 31, 2008. Hydraulic dredging from October 1, 2008 to October 31, 2008 must adhere to the following conditions:

- 1) Weeks Marine, or their subcontractor, must conduct twice daily (i.e., morning and afternoon) inspections of the fill site for evidence of Gulf sturgeon (whole fish or parts) transported into the fill site via the hydraulic dredge. Although rare, hydraulic dredges have been reported to pick up bottom-feeding sturgeon and transport them through dredge pipelines. Should evidence of Gulf sturgeon be found within the fill sites, hydraulic dredging should cease immediately and this office should be contacted. Attached are visual aids to assist in identifying Gulf sturgeon.
- 2) Disturbance associated with continuous hydraulic dredging will likely keep sturgeon away from the cutterhead and avoid them being entrained. Should dredging activities cease for longer than 15 minutes, the cutterhead should be lowered into the water only enough to allow water to be pumped through the dredge. Water should be pumped




through the dredge for 10 minutes to allow time for any sturgeon in the area to move away from the dredge before the cutterhead is lowered to the bottom.

- 3) Dredging activities should focus on the southern limits of the borrow site as sturgeon are more likely to be found closer to the Lake Pontchartrain shoreline.

Should you have any questions or comments, please contact Kevin Roy (337/291-3120) or David Walther (337/291-3122) of this office.

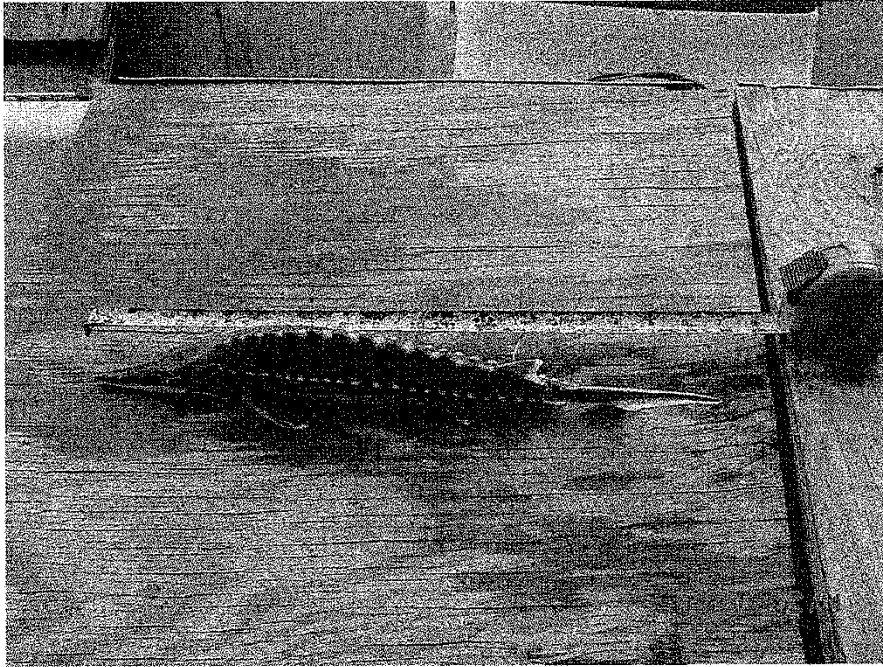
Sincerely,



James F. Boggs
Supervisor
Louisiana Field Office

Enclosure

cc: Andrew Beall, Office of Coastal Protection and Restoration, Baton Rouge, LA
Rudy Simoneaux, Office of Coastal Protection and Restoration, Baton Rouge, LA



APPENDIX E



State of Louisiana

BOBBY JINDAL
GOVERNOR

MEMORANDUM

December 8, 2008

RECEIVED
NATURAL RESOURCES
PURCHASING
2009 JAN - 7 PM 1:39

To: Chet Fruge, Manager, Project Support Section

Through: Christopher Knotts, P.E., Chief, Engineering and Operations Division *CK*

Through: Larry Ardoin, P.E., Operations Administrator *LA*

Through: David Burkholder, P.E., Engineer Manager *DB*

From: Thomas Bernard, P.E., Engineer Supervisor / Construction Manager *TB*

Subject: Change Order No. 1, Goose Point / Point Platte Marsh Creation Project (PO-33) File Number O 26903 DL, Purchase Order Number 3305474

Please process the attached Final Contract Change Order No. 1 at your convenience:

The Change in Items No. 2 & 3 is brought about as a result of a variation / increase in the estimated contract quantities necessary to fulfill the requirements of this contract. The contract quantities for Item No. 2 (Hydraulic Dredging) and Item No. 3 (Earthen Containment Dikes) were bid as Unit Price Items and varied upward from the contract quantities. Item No. 6 (Vinyl Sheet Piling) was added to the contract during construction to prevent erosion of the earthen containment dikes in areas where they were located at, or near, the lake rim. This Change Order will increase the original contract price by \$431,374.75 making the revised contract amount **\$12,982,103.75**. This Change Order does not necessitate a change in the Contract Time.

If you have any questions, please call me, Tom Bernard at, Office 504-280-4071, Cell 504-239-3951.

Cc: Contract File

New Orleans Field Office • CERM Suite 309 • 2045 Lakeshore Drive • New Orleans, Louisiana 70122
(504) 280-4065 • Fax (504) 280-4066
An Equal Opportunity Employer

CHANGE ORDER NO. 1


OWNER: State of Louisiana, LDNR, Office of Coastal Protection & Restoration
CONTRACTOR: Weeks Marine, Inc.
PROJECT: Goose Point / Point Platte Marsh Creation Project (PO-33)
FILE NO: O 26903 DL
PURCHASE ORDER NO: 3305474
ENGINEER: BCG Engineering & Consulting, Inc.

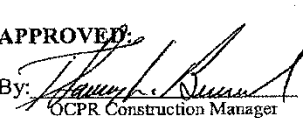
You are directed to make the following changes in the Contract Documents:

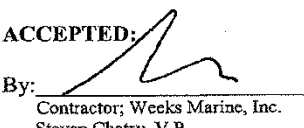
Description: The Change in Items No. 2 & 3 is brought about as a result of a variation / increase in the estimated contract quantities necessary to fulfill the requirements of this contract. The contract quantities for Item No. 2 (Hydraulic Dredging) and Item No. 3 (Earthen Containment Dikes) were bid as Unit Price Items and varied upward from the contract quantities. Item No. 6 (Vinyl Sheet Piling) was added to the contract during construction to prevent erosion of the earthen containment dikes in areas where they were located at, or near, the lake rim. This Change Order, which is detailed on page 2, will increase the original contract price by \$147,188.00 making the revised contract amount **\$12,982,103.75**. This Change Order does not necessitate a change in the Contract Time.

Attachments: None

Change in Contract Price		Change in Contract Time	
Original Contract Price	\$12,550,729.00	Original Contract Time (calendar days)	270
Net Increase (Decrease) from previous Change Orders	\$0.00	Net Increase (Decrease) from previous Change Orders (calendar days)	0
Contract Price prior to this Change Order	\$12,550,729.00	Contract Time prior to this Change Order (calendar days)	270
Net Increase (Decrease) because of this Change Order, see page 2	\$431,374.75	Net Increase (Decrease) from this Change Order (calendar days)	0
Contract Price with this Change Order	\$12,982,103.75	Contract Time with this Change Order (calendar days)	0

RECOMMENDED:
 By: 
 BCG Engineering & Consulting, Inc.
 Date: 12/08/08

APPROVED:
 By: 
 OCPR Construction Manager
 Date: 12/08/2008

ACCEPTED:
 By: 
 Contractor; Weeks Marine, Inc.
 Steven Chatry, V.P.
 Date: 12/08/2008

**GOOSE POINT / POINT PLATTE MARSH CREATION (PO-33)
FILE NO: O 26903 DL, PURCHASE ORDER NO: 3305474**

SUMMARY OF CHANGE ORDER NO. 1

Description	Quantity	Unit	Unit Price	Amount
Item No. 2 – Hydraulic Dredging This item is paid for by the Cubic Yards of material excavated from two borrow pits. The Original Contract Quantity is 3,008,700 C.Y. and the actual quantity is 3,092,905 C.Y. or 84,205 C.Y. more than the original contract quantity.	84,205	C.Y.	\$3.35	\$282,086.75
Item No. 3 – Earthen Containment Dikes This item is paid for by the Linear Foot. The Original Contract Quantity is 49,557 L.F. and the actual quantity is 49,732 L.F. or 175 L.F. more than the original contract quantity.	175	L.F.	\$12.00	\$2,100.00
Item No. 6 – Vinyl Sheet Piling This item is paid for by the Linear Foot. It was <u>added</u> to the contract during construction to prevent erosion of the earthen containment dikes in areas where they were located at or near the lake rim.	620	L.F.	\$237.40	\$147,188.00
Net Increase in Contract Price due to this Change Order -----				\$431,374.75

REQUEST FOR COST QUOTE
November 5, 2008

OWNER: State of Louisiana, LDNR, Office of Coastal Protection & Restoration
CONTRACTOR: Weeks Marine, Inc.
PROJECT: Goose Point / Point Platte Marsh Creation Project (PO-33)
FILE NO: O 26903 DL
PURCHASE ORDER NO: 3305474
ENGINEER: BCG Engineering & Consulting, Inc.

Weeks Marine, Inc. is requested to review the attached three Field Change Drawings to install Vinyl Sheet Pile Reinforcement to three locations on the dike of Area D; and, install a closure weir on the shoreline of Lake Pontchartrain opposite Area E. Weeks Marine is also requested to submit a cost per linear foot of installed sheet piling cost proposal to procure all necessary materials and deliver to each site, provide all necessary equipment, tools, consumerables and labor, and install approximately 620 linear feet of cantilevered sheet pile reinforcement walls at four sites as described on the attached drawings. The cost shall include providing an airboat service from the USF&W dock during the installation period to allow for the Owner, Engineer and Inspector to inspect the work progress.

Description: This added work does not necessitate a change in the Contract Time, since the completion date is February 19, 2009.

Attachments: Three Engineering Field Sketches to describe to work being requested:

- Marsh Area D Plan
- Marsh Area E Plan
- Typical Sheet Pile Installation

Weeks Marine, Inc. herewith agrees to install 620 Linear Feet of Vinyl Sheet pile as described above and on the attached drawings for the unit price per linear foot of \$237.40, totaling \$147,188. This cost if accepted by the OCPR/ LDNR will be included in the final change order to the subject project.

OFFERED BY:

By: Michael D. Ernst
 General Manager
 Contractor, Weeks Marine, Inc

Date: 04 December 2008

RECOMMENDED BY:

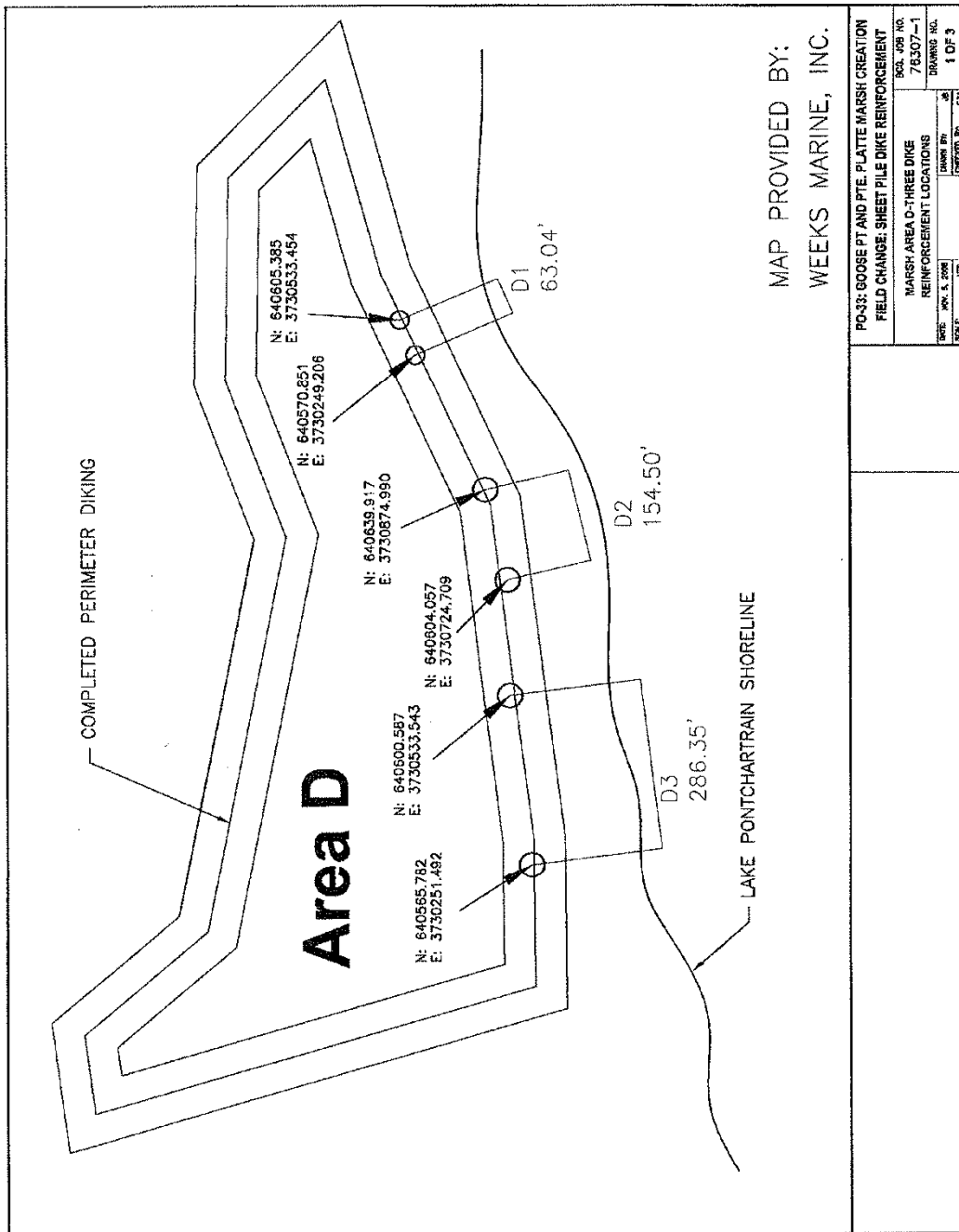
By: [Signature]
 BCG Engineering & Consulting, Inc.

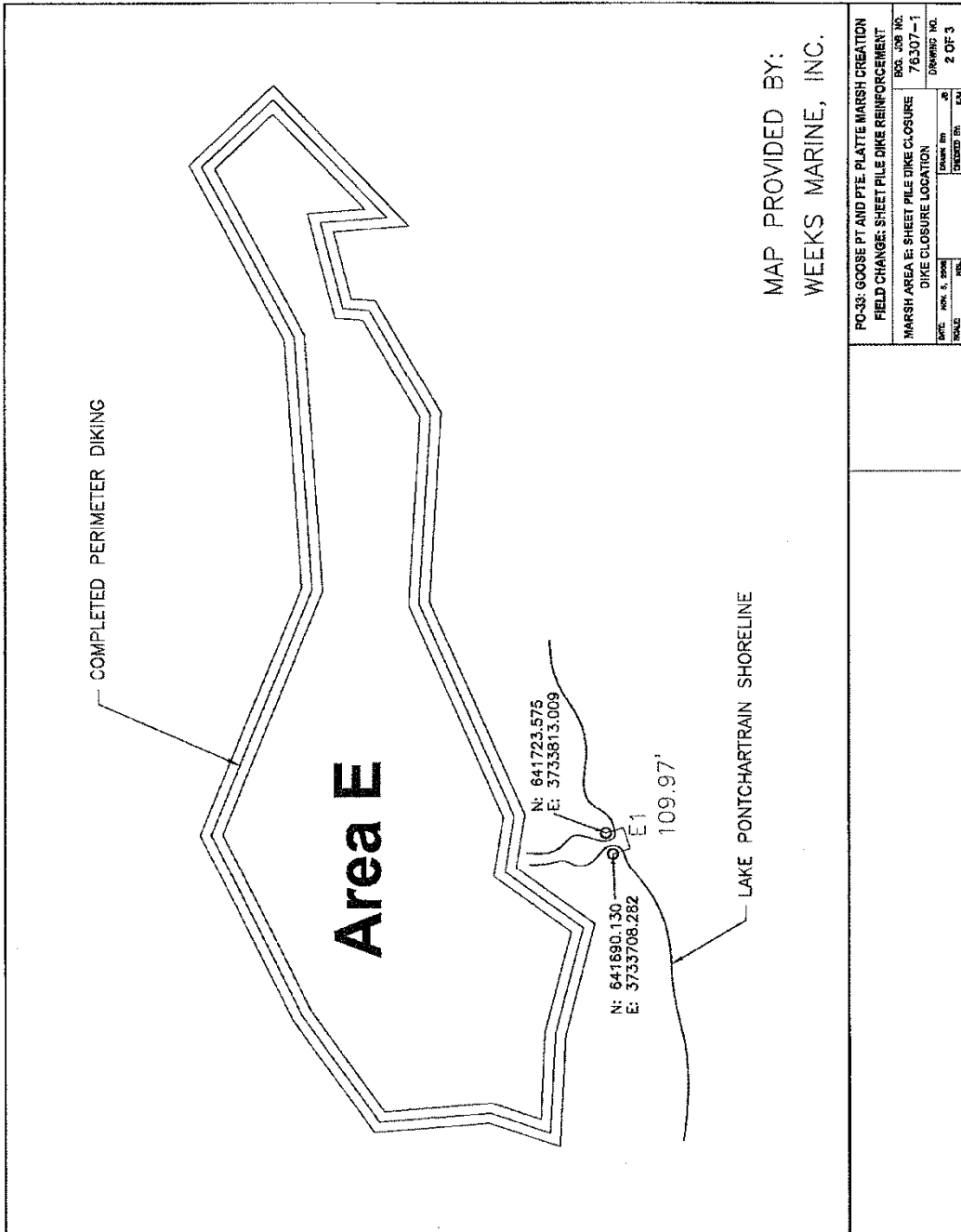
Date: 12-5-08

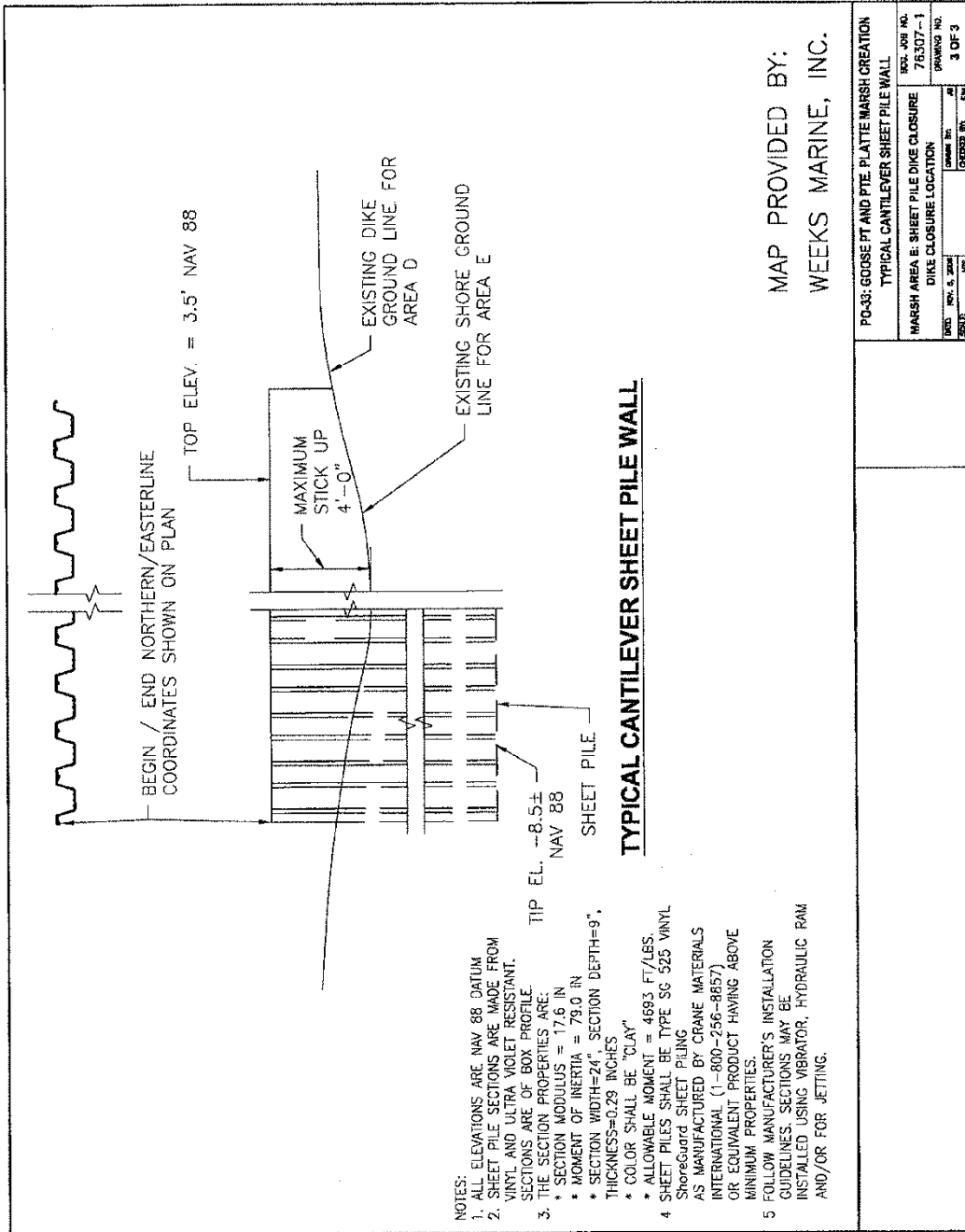
APPROVED BY:

By: [Signature]
 OCPR Construction Manager.

Date: 12-08-08







MAP PROVIDED BY:
WEEKS MARINE, INC.

- NOTES:
1. ALL ELEVATIONS ARE NAV 88 DATUM
 2. SHEET PILE SECTIONS ARE MADE FROM VINYL AND ULTRA VIOLET RESISTANT. SECTIONS ARE OF BOX PROFILE.
 3. THE SECTION PROPERTIES ARE:
 - * SECTION MODULUS = 177.6 IN
 - * MOMENT OF INERTIA = 79.0 IN
 - * SECTION WIDTH=24". SECTION DEPTH=9". THICKNESS=0.29 INCHES
 - * COLOR SHALL BE "CLAY"
 - * ALLOWABLE MOMENT = 4693 FT/LBS.
 4. SHEET PILES SHALL BE TYPE SG 525 VINYL ShoreGuard SHEET PILING AS MANUFACTURED BY CRANE MATERIALS INTERNATIONAL (1-800-256-8857) OR EQUIVALENT PRODUCT HAVING ABOVE MINIMUM PROPERTIES.
 5. FOLLOW MANUFACTURER'S INSTALLATION GUIDELINES. SECTIONS MAY BE INSTALLED USING VIBRATOR, HYDRAULIC RAM AND/OR FOR JETTING.

PO-33: GOOSE PT AND PTE PLATTE MARSH CREATION	
TYPICAL CANTILEVER SHEET PILE WALL	
REV. JOB NO.	78507--1
MARSH AREA B: SHEET PILE DIKE CLOSURE	
DIKE CLOSURE LOCATION	
DATE	NOV. 5, 2004
BY	AS
CHECKED BY	ESM
DESIGNED BY	NSI
PROJECT NO.	3 OF 3



ORDER CHANGE

STATE OF LOUISIANA
OFFICE OF STATE PURCHASING
DELEGATED PURCHASE AUTHORITY

CHANGE NUMBER 02		DATE PRINTED 06/02/09	ORDER NUMBER 3414867						
VENDOR NAME, STREET, CITY, STATE, ZIP CODE WEEKS MARINE INC 304 GAILLE DR COVINGTON, LA 70433		ALL TERMS AND CONDITIONS IN THE SOLICITATION ARE PART OF THIS ORDER AS IF FULLY REPRODUCED HEREIN. FILE NUMBER: PURCHASING AGENCY NO.: 107001 FY: 08							
BILL TO: DEPARTMENT OF NATURAL RESOURCES COASTAL RESTORATION DIVISION ATTN: PROJECT MANAGER P O BOX 44027 BATON ROUGE, LA 70804-4027		ADDRESS ALL INQUIRIES AND CORRESPONDENCE TO: TOM KETTERER (225)342 8022							
SHIP FOB DESTINATION TO: (UNLESS SPECIFIED ELSEWHERE) DEPARTMENT OF NATURAL RESOURCES OCPB PROJECT MANAGER PROJECT SITE, LA 00000		CONTACT FOR DELIVERY INSTRUCTIONS (NAME, TELEPHONE) TOM BERNARD / SAM PRIDDY (504)280-4071-5023							
VENDOR NO.	AWARD CODE	SOLIC CODE	BUYER CODE	COMPL CODE	HSI REQ NUMBER	AGENCY REQ NUMBER	SOLICIT NUMBER	CONTRACT NUMBER	REQ AGENCY: 435002
135475810-00	N	N	D	F		CED080020			OFFICE OF STATE PURCHASING DEPT OF NATURAL RESOURCES
PROMPT PAYMENT TERMS NONE		DELIVERY TERMS/FOB POINT 060 DAYS ARO DESTINATION		TOTAL AMOUNT OF THIS CHANGE \$ 13495.00		TYPE OF CHANGE INCREASE FUNDS		NET ORDER AMOUNT \$ 12895588.75	
LINE NO.	COMMODITY/SERVICE DESCRIPTION					QUANTITY	UNIT	UNIT PRICE	EXTENDED AMOUNT
00001	COMMODITY CODE: 962-73-000000 DELIVERY TERMS: 060 DAYS ARO FILE #026903DL PO# 3305474 FURNISH ALL MATERIALS, LABOR, SUPPLIES, TOOLS AND EQUIPMENT NECESSARY FOR THE GOOSE POINT/POINT PLATTE MARSH CREATION PROJECT (PO-33), ST. TAMMANY PARISH FOR PAYMENT SEND INVOICES TO: NATURAL RESOURCES, CRMD ATTN: TOM BERNARD CERM BLDG RM 309 2045 LAKESHORE DR NEW ORLEANS, LA 70122 ORIGINAL CONTRACT AMOUNT \$ 12,550,729.00 PLUS CHANGE ORDER 01 \$431,374.75 NEW CONTRACT AMOUNT \$12,982,103.75 LESS PAYMENTS \$12,322,898.37 PLUS C002 \$13,485.00 NET AMOUNT \$ 662,600.38 (PROCESSED ONLY TO HAVE CHANGE ORDER 01)					1	JOB	\$ 6000000.00	\$ 6000000.00
APPROVED: DENISE LEA DIRECTOR OF STATE PURCHASING									

CHANGE ORDER		INCREASE FUNDS		
NUMBER : 3414867 VENDOR NUMBER: 135475810-00		VENDOR: WEEKS MARINE INC		PAGE 2
COMMODITY/SERVICE DESCRIPTION	QUANTITY	UNIT	UNIT PRICE	EXTENDED AMOUNT
APPROVED. ALWAYS USE PC# 3305474)				
00002 COMMODITY CODE: 962-73-000000 DELIVERY TERMS: 060 DAYS ARO CONTINUED FROM LINE 00001	1	JOB	\$ 6000000.00	\$ 6000000.00
00003 COMMODITY CODE: 962-73-000000 DELIVERY TERMS: 060 DAYS ARO CONTINUED FROM LINE 00001	1	JOB	\$ 982103.75	\$ 982103.75
00004 COMMODITY CODE: 962-73-000000 DELIVERY TERMS: 060 DAYS ARO CHANGE ORDER 02 ***** ITEM # 7 FLOTATION CHANNELS EXTEND COMPLETION TIEM FROM 270 TO 278 CALANDAR DAYS.	1	JOB	\$ 13495.00	\$ 13495.00

ATTACHMENT TEXT		INCREASE FUNDS	
NUMBER : 3414867 VENDOR NUMBER: 135475810-00		VENDOR: WEEKS MARINE INC	PAGE 3
<p>TO ADD ITEM 7 FLOTATION CHANNELS TO THE CONTRACT NEEDED AS A RESULT OF AN UNANTICIPATED CHANGE IN THE TIDAL CONDITIONS AS PER ATTACHED JUSTIFICATION AND AGREEMENT BETWEEN WEEKS MARINE AND DNR.</p> <p>TO EXTEND THE COMPLETION DATE FROM 270 TO 278 CALENDAR DAYS.</p>			



State of Louisiana

BOBBY JINDAL
GOVERNOR

MEMORANDUM

March 13, 2009

To: Chet Fruge, Manager, Project Support Section

Through: Christopher Knotts, P.E., Chief, Engineering and Operations Division

Through: Larry Ardoin, P.E., Operations Administrator

Through: David Burkholder, P.E., Engineer Manager

From: Thomas Bernard, P.E., Engineer Supervisor / Construction Manager *TB*

Subject: Change Order No. 2, Goose Point / Point Platte Marsh Creation Project (PO-33) File Number O 26903 DL, Purchase Order Number 3305474

Please process the attached Final Contract Change Order No. 2 at your convenience:

This Change Order No. 2 will add an "Item No. 7 (Flotation Cannels)" to the contract. It is added as a result of an unanticipated change in the tidal conditions experienced during the execution of Change Order No 1, which added Item No. 6 Vinyl Sheet Piling to the contract. Because of these unusually lower than normal tidal ranges, the contractor was directed to excavate a flotation channel at each location to get his equipment into the project area to perform the work. This flotation channel was neither anticipated nor included in the request for proposal associated with Change Order No.1. In addition the contractor had to stand-by on site in anticipation of rising tides which allowed him to float his equipment to the job site. This caused him to exceed his contract period by 8 calendar days increasing the Contract Time from 270 to 278 calendar days through January 27, 2009. This Change Order No. 2 will increase the contract price by \$13,495.00 making the revised contract amount **\$12,995,598.75**.

If you have any questions, please call me, Tom Bernard at, Office 504-280-4071, Cell 504-239-3951

New Orleans Field Office
2045 Lakeshore Drive • CERM Building Suite 309 • New Orleans, Louisiana 70122
(504) 280-4065 • Fax (225) 280-4066 • <http://www.lacpra.org/>
An Equal Opportunity Employer

CHANGE ORDER NO. 2 & FINAL

OWNER: State of Louisiana, CPRA, Office of Coastal Protection & Restoration
CONTRACTOR: Weeks Marine, Inc.
PROJECT: Goose Point / Point Platte Marsh Creation Project (PO-33)
FILE NO: O 26903 DL
PURCHASE ORDER NO: 3305474
ENGINEER: BCG Engineering & Consulting, Inc.

You are directed to make the following changes in the Contract Documents:

Description:

This Change Order No. 2 will add an "Item No. 7 (Flotation Cannels)" to the contract. It is added as a result of an unanticipated change in the tidal conditions experienced during the execution of Change Order No. 1, which added Item No. 6 Vinyl Sheet Piling to the contract. Because of these unusually lower than normal tidal ranges, the contractor was directed to excavate a flotation channel at each location to get his equipment into the project area to perform the work. This flotation channel was neither anticipated nor included in the request for proposal associated with Change Order No.1. In addition, the contractor had to stand-by on site in anticipation of rising tides which allowed him to float his equipment to the job site. This caused him to exceed his contract period by 8 calendar days increasing the Contract Time from 270 to 278 calendar days through January 27, 2009. This Change Order No. 2 will increase the contract price by \$ 13,495.00, making the revised contract amount **\$12,995,598.75.**

Attachments: Contractor's request for this change and Recommendation from the Engineer that OCPR accept this change as submitted.

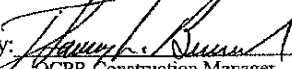
Change in Contract Price		Change in Contract Time	
Original Contract Price	\$12,550,729.00	Original Contract Time (calendar days)	270
Net Increase (Decrease) from previous Change Orders	\$431,374.75	Net Increase (Decrease) from previous Change Orders (calendar days)	0
Contract Price prior to this Change Order	\$12,982,103.75	Contract Time prior to this Change Order (calendar days)	270
Net Increase (Decrease) because of this Change Order, see page 2	\$13,495.00	Net Increase (Decrease) from this Change Order (calendar days)	8
(Final) Contract Price with this Change Order	\$12,995,598.75	Contract Time with this Change Order (calendar days)	278

RECOMMENDED:

By: 
 BCG Engineering & Consulting, Inc.


Date: 3/16/09

APPROVED:

By: 
 OCPR Construction Manager

Date: _____

ACCEPTED:

By: 
 Contractor, Weeks Marine, Inc.
 V. STEPHEN CHATRY

Date: 3/16/09

**GOOSE POINT / POINT PLATTE MARSH CREATION (PO-33)
FILE NO: O 26903 DL, PURCHASE ORDER NO: 3305474**

SUMMARY OF CHANGE ORDER NO. 2

Description	Quantity	Unit	Unit Price	Amount
Item No. 2 – Flotation Channels	1	Lump Sum	\$13,495.00	\$13,495.00
Net <u>Increase</u> in Contract Price due to this Change Order -----				\$13,495.00

PAYMENT SUMMARY

Goose Point/Point Platte Marsh Creation Project (PO-33)

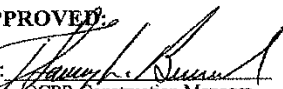
Weeks Marine, Inc. P.O. No. 3305474 File No. O26903DL

Original Contract Amount	\$12,550,729.00
Change Order No. 1	+ \$431,374.75
Change Order No. 2	+ \$13,495.00
Final Adjusted Total Contract Amount	<u>\$12,995,598.75</u>

Invoice No.	Earned This Period	Retained (5%)	Invoice Amount	Earned To Date	Contract Balance
1	\$551,916.00	\$27,595.80	\$524,320.20	\$551,916.00	\$11,998,813.00
2	\$500,504.00	\$25,025.20	\$475,478.80	\$1,052,420.00	\$11,498,309.00
3	\$2,412,432.40	\$120,621.62	\$2,291,810.78	\$3,464,852.40	\$9,085,876.60
4	\$974,249.25	\$48,712.46	\$925,536.79	\$4,439,101.65	\$8,111,627.35
5	\$2,354,882.65	\$117,744.13	\$2,237,138.52	\$6,793,984.30	\$5,756,744.70
6	\$1,193,434.65	\$59,671.73	\$1,133,762.92	\$7,987,418.95	\$4,563,310.05
7	\$4,008,310.05	\$200,415.50	\$3,807,894.55	\$11,995,729.00	\$555,000.00
8	\$545,000.00	\$27,250.00	\$517,750.00	\$12,540,729.00	\$10,000.00
9	\$441,374.75	\$22,068.74	\$419,306.01	\$12,982,103.75	CO #1 (\$0.00)
10	\$13,495.00	\$674.75	<u>\$12,820.25</u>	\$12,995,598.75	CO #2 (\$0.00)

Thomas L. Bernard, P.E., O CPR Construction Manager

APPROVED:

By: 
OCPR Construction Manager

AquaBlok® 2080FW™ /PONDSEAL™

General Description

AquaBlok is a patented composite aggregate resembling small stones that is typically comprised of a dense aggregate core wrapped with an additive layer. In this application of the technology, crushed limestone typically serves as the core and powdered sodium bentonite clay is utilized as the coating or additive layer (Figure 1).

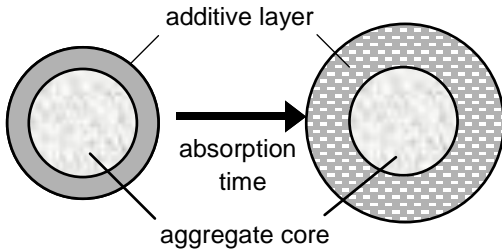


Figure 1. Configuration of stone-clay composite particle.

AquaBlok 2080FW (or PONDSEAL) is a freshwater-compatible formulation which is 20% clay by weight (based on the total quantity of raw material used in production). The high-solids content and consistency of the blend provides superior structural stability and reliable hydration/swell when exposed to water. This product will provide a low-permeable seal without the need for field blending or mechanical compaction.



Product Specifications

Aggregate Core:	Nominal AASHTO #8 (1/4-3/8") crushed limestone or non-calcareous substitute, as deemed project-appropriate (can be custom-sized to meet project-specific need)
Additive Layer	Bentonite Performance Minerals – BARA-KADE® Standard (or equivalent) ◦ High-swell Wyoming sodium (Na) bentonite clay (montmorillonite) Powdered (approx. 200 mesh); light grey; odorless
Binder:	Cellulosic polymer
Permeability:	1×10^{-7} to 1×10^{-9} cm/sec (depending on product thickness and overburden)
Dry Bulk Density:	88 – 90 lbs/ft ³ (consolidated); 83 – 85 lbs/ft ³ (loose)
Pre-Hydrated Moisture:	7 – 15% (maximum)

Product Storage & Handling

AquaBlok should always be stored under-roof or completely protected (i.e. tarped) from exposure to surface moisture (e.g. precipitation, run-off, excessive condensation) prior to placement. Storage in a temperature-and/or humidity-controlled environment is not necessary. However, always store in original packaging on a clean, dry pallet prior to installation.

Material can be placed using a wide range of commonly available construction equipment – e.g. loaders, excavators, conveyors. Care should be taken to keep equipment as dry as possible during handling. For optimum performance, AquaBlok should NOT be blended or mixed with resident soil. Mechanical compaction can further reduce permeability but is not necessary.



AquaBlok, Ltd.
 175 Woodland Ave.
 Swanton, OH 43558
www.aquablok.com
 Phone: (419) 825-1325
 Email: services@aquablok.com

© 2016 AquaBlok, Ltd. All rights reserved.
 Rev. 02/18/2016

Shawn Wiggins

From: John Collins <jcollins@aquablok.com>
Sent: Monday, March 15, 2021 2:20 PM
To: Shawn Wiggins
Cc: Pooja Patel
Subject: RE: Request for AquaBlok Cost / Inquiry
Attachments: AB 2080FW Detailed Spec Sheet - March 2018.pdf

CAUTION: This email originated from outside of the organization. Do not click links or open attachments unless you recognize the sender and know the content is safe.

Shawn,

Per our conversation, the following should be used for a ROM pricing for AquaBlok at the site described:

Product: AquaBlok 2080FW#8 (see attached spec sheet)
Bulk Density: 85lb/CF
Application Rate for 4-inch Dry Thickness: ~ 28lb/SF
Total Material Quantity: 229 tons.
Material Price: \$225/ton (FOB Swanton, Ohio)
Price for Quantity: \$51,525.00
Freight Estimate: \$3,000/truck at 21.6 tons per load = 11 loads = \$33,000
Delivered Total: \$84,525

Feel free to let me know if you have any further questions.

Thanks, John

John A. Collins | COO
AquaBlok, Ltd. | www.aquablok.com
175 Woodland Ave | Swanton, OH 43558
Office: 419.825.1325 | Cell 419.343.7803



From: Shawn Wiggins <Shawn.Wiggins@erm.com>
Sent: Monday, March 15, 2021 2:49 PM
To: John Collins <jcollins@aquablok.com>
Subject: Request for AquaBlok Cost

John,

Thanks again for all of the information you provided over the phone for our Jeanerette Lumber project. Like we discussed, if you could provide a written cost estimate that would be very helpful for us. Here is a summary of the site details:

- Site Location: Atchafalaya River Basin – boat launch (shipping location) is near White Castle, LA.
- Proposed Treatment Area: 16,329 ft²
- Anticipated Cap Thickness: 4" dry

Please let me know if you need any other information, and thank you again for all of your help.

Many thanks,

Shawn A. Wiggins, PG
Senior Geologist

ERM

CityCentre Four | 840 West Sam Houston Parkway North, Suite 600 | Houston, Texas | 77024-4613

T +1 281 242 5700 | **D** +1 832 730 4388 | **M** +1 971 303 2385

E shawn.wiggins@erm.com | **W** www.erm.com



This email and any files transmitted with it are confidential. It is for the intended recipient only. If you have received the email in error please notify the author by replying to this email and take the steps necessary to delete the message completely from your computer system. If you are not the intended recipient, you must not disclose, distribute, copy, print, or rely on this email. Any views expressed by an individual within this email which do not constitute or record professional advice relating to the business of the ERM companies, do not necessarily reflect the views of those companies. Michael Pisani & Associates, Inc. is a member of the ERM group of companies and is incorporated in Louisiana, USA with its principal place of business at 3838 North Causeway Boulevard, Suite 3000, Metairie, Louisiana 70002, USA. To find out how ERM manages personal data, please review our [Privacy Policy](#)

This electronic mail message may contain information which is (a) LEGALLY PRIVILEGED, PROPRIETARY IN NATURE, OR OTHERWISE PROTECTED BY LAW FROM DISCLOSURE, and (b) intended only for the use of the Addressee (s) names herein. If you are not the Addressee (s), or the person responsible for delivering this to the Addressee (s), you are hereby notified that reading, copying, or distributing this message is prohibited. If you have received this electronic mail message in error, please contact us immediately at (281) 600-1000 and take the steps necessary to delete the message completely from your computer system. Thank you, Environmental Resources Management.

Please visit ERM's web site: <http://www.erm.com>. To find out how ERM manages personal data, please review our [Privacy Policy](#)

Source: <https://www.statista.com/statistics/219339/us-prices-of-cement/>

U.S. cement prices 2007-2020

Published by [M. Garside](#), Feb 15, 2021

In 2020, the cost of cement in the United States came to around 124 U.S. dollars per metric ton, the highest in the last years.

Cement prices – additional information

The discovery of cement can be credited to ancient Roman times, where a mixture of volcanic ash and lime were used to form mortar. In construction today, cement can be characterized as hydraulic or nonhydraulic, based on its ability or inability, respectively, to set under wet conditions or underwater. Through a chemical reaction between the dry cement ingredients and water, hydraulic cements become adhesive and thus also protect the hardened material from chemical attack. In 2020, the [United States imported 15 million metric tons of hydraulic cement for consumption](#). One of the most common types of hydraulic cement is known as Portland cement. It is used in concrete, mortar, stucco, as well as grout. However, this type of cement can cause chemical burns, while the powder can cause irritation and even lung cancer. The United States [produced 89 million metric tons of Portland cement and masonry cement](#) in 2020.

In 2016, cement prices finally surpassed pre-recession prices, which was about 111 U.S. dollars per metric ton the year prior to the global recession. The cement price per ton relies heavily on demands from the construction industry. [Global production is expected to reach 4.83 billion metric tons](#) by 2030. As of 2019, [France's Cie de Saint-Gobain](#), one of the leading manufacturers of construction materials worldwide, reported sales totaling 47.7 billion U.S. dollars.

Cement prices in the United States from 2007 to 2020

(in U.S. dollars per metric ton)

February 2021

[Additional Information](#)

Region

© Statista 2021 
United States

[Show source](#)

Survey time period

2007 to 2020

Supplementary notes

* Estimate.

Average mill value. Portland plus masonry cement unless otherwise noted.

The figures for 2007 through 2015 are taken from previous summaries.



Alert Systems Technologies LLC
 204 Arabian Dr, Lafayette, LA 70507
 (P) 337-210-5900 (F) 337-210-5904

Atchafalaya River Basin Project
 Louisiana

4/20/21

Mr. Shawn,

Thank you for your interest in our products and services. The scope of work has been identified as monitoring the running status of four pumps feeding two tanks. These pumps will be locally controlled via mechanical, hydrostatic pressure switches. These switches have a high fluid level and a low fluid level setpoint. These setpoints will be set to the desired minimum and maximum tank level heights. Once the tank level height reaches one of your setpoints, it will either make or break a run signal to the pump. To monitor pump operations, a pressure switch will measure discharge pressure and relay this information to the satellite modem. In the case of a pressure switch malfunction, adjustable, top-mount level switches in each tank will alarm if the tank level rises too high. All tank level alarms and pump run/stop notifications can be sent by any combination of the following: email, text, live call, or automated call. A webpage with a dated, timestamped history of all incoming and outgoing notifications will be available. Data can be graphed on website or exported and downloaded as CVS file.

1) ST satellite modem + mounting HW	\$ 1,400.00
1) Modem power/input bulk-cable	\$ 99.00
1) Modem/power panel + charge control + HW	\$ 580.00
1) 10W solar panel + mounting HW	\$ 179.00
1) 18aH 12V battery	\$ 83.00
4) 0-50psi pressure monitor + HW	\$ 960.00
2) Hydrostatic pressure switch with make until break cntc	\$ 3,600.00
2) 3ft top mount level switch	\$ 550.00
1500) 6pair 24AWG cable	\$ 1,275.00
1000) 2-4pair 18AWG cable	\$ 1,540.00
1) Misc bulk electrical supplies	<u>\$ 455.00</u>

Materials \$10,719.30

8) Shop labor	\$ 600.00
36) Installation labor, 2 men/hr	\$ 5,222.00
2) 1 Truck round trip /day	\$ 500.00
2) Per diem 2 techs /day	<u>\$ 680.00</u>

Anticipated subtotal \$17,719.30

These items above can be made available within two to four weeks from ordering. A \$150.00 set up fee applies to web page configuration. A monthly recurring fee of \$105 (or more depending upon plan/usage) applies to viewing and accessing trends as well as sending out alerts via text and phone calls as advised. OEM parts and labor are warrantied one year. Third party parts are warrantied 90 days. If any repairs or maintenance is needed out of warranty, our labor is \$80/hr (4hr minimum) and vehicle charge is \$1.20/mile. We look forward to being of service in this important project. Your satisfaction is our goal.

Regards,
 Jayme Paille



PO Box 1147
 Foxworth, MS 39483

Cost Proposal

Date	Proposal #
3/30/2021	13206

Name / Address
ERM - ACCOUNTS PAYABLE CITY CENTRE FOUR 840 WEST SAM HOUSTON PARKWAY SUITE 600 HOUSTON, TX 77024

Re:
Environmental Services Bayou Pigeon, LA

Description	Unit	Qty	Rate	Total
Mobilize/Demobilize	lump sum	1	800.00	800.00T
Crew & Materials for plugging & abandonment of (3) 1" PVC wells	per day	1	1,400.00	1,400.00T
* Daily rate NTE 10 hr. workday; Additional hrs. @ \$180.00 per hr.			0.00	0.00T
Per-Diem	per day	1	300.00	300.00T

Customer Acceptance of Cost Proposal

 Authorized Signature Date

*Payment Terms NTE 30 days upon project completion.
 *1.5% Interest will be charged monthly to all overdue invoices.

Subtotal	\$2,500.00
Tax (0.0%)	\$0.00
Total	\$2,500.00

Walker-Hill Environmental, Inc
 Foxworth, MS Office
 Phone: (601) 736-3500
 Email: eric@whenv.com



Cost Proposal

PO Box 1147
 Foxworth, MS 39483

Date	Proposal #
4/13/2021	13256

Name / Address
ERM - ACCOUNTS PAYABLE CITY CENTRE FOUR 840 WEST SAM HOUSTON PARKWAY SUITE 600 HOUSTON, TX 77024

Re:
Environmental Services Bayou Pigeon, LA

Description	Unit	Qty	Rate	Total
Mobilize/Demobilize	lump sum	1	5,000.00	5,000.00T
Sonic Rig, Portable Platform, Water Tank & Crew for installation of (1) 4" PVC recovery well & (1) 2" PVC monitor well both up to 30' BGS	per day	3	6,500.00	19,500.00T
* Daily rate NTE 10 hr. workday; Additional hrs. @ \$450.00 per hr.			0.00	0.00T
4" PVC Well Materials	per ft.	30	20.00	600.00T
2" PVC Well Materials	per ft.	30	16.00	480.00T
6" Above Grade Protective Casing up to 20'	per each	2	1,875.00	3,750.00T
Per-Diem	per day	5	450.00	2,250.00T
Furnish containment booms & Spill Kit	per day	3	175.00	525.00T
Roll-Off Box	per day	10	250.00	2,500.00T
Water Tanks	per day	3	450.00	1,350.00T

Customer Acceptance of Cost Proposal

 Authorized Signature Date

*Payment Terms NTE 30 days upon project completion.
 *1.5% Interest will be charged monthly to all overdue invoices.

Subtotal	\$35,955.00
Tax (0.0%)	\$0.00
Total	\$35,955.00

Walker-Hill Environmental, Inc
 Foxworth, MS Office
 Phone: (601) 736-3500
 Email: eric@whenv.com



Cost Proposal

PO Box 1147
Foxworth, MS 39483

Date	Proposal #
4/13/2021	13257

Name / Address
ERM - ACCOUNTS PAYABLE CITY CENTRE FOUR 840 WEST SAM HOUSTON PARKWAY SUITE 600 HOUSTON, TX 77024

Re:
Environmental Services Bayou Pigeon, LA

Description	Unit	Qty	Rate	Total
Mobilize/Demobilize	lump sum	1	5,000.00	5,000.00T
Sonic Rig, Portable Platform, Water Tank & Crew for installation of (3) 4" PVC recovery wells up to 30' BGS	per day	4	6,500.00	26,000.00T
* Daily rate NTE 10 hr. workday; Additional hrs. @ \$450.00 per hr.			0.00	0.00T
4" PVC Well Materials	per ft.	90	20.00	1,800.00T
6" Above Grade Protective Casing up to 20'	per each	3	1,875.00	5,625.00T
Per-Diem	per day	6	450.00	2,700.00T
Furnish containment booms & Spill Kit	per day	4	175.00	700.00T
Roll-Off Box	per day	10	250.00	2,500.00T
Water Tanks	per day	4	450.00	1,800.00T

Customer Acceptance of Cost Proposal

Authorized Signature _____ Date _____

*Payment Terms NTE 30 days upon project completion.
*1.5% Interest will be charged monthly to all overdue invoices.

Subtotal	\$46,125.00
Tax (0.0%)	\$0.00
Total	\$46,125.00

Walker-Hill Environmental, Inc
Foxworth, MS Office
Phone: (601) 736-3500
Email: eric@whenv.com



Cost Proposal

PO Box 1147
Foxworth, MS 39483

Date	Proposal #
5/10/2021	13409

Name / Address
ERM - ACCOUNTS PAYABLE CITY CENTRE FOUR 840 WEST SAM HOUSTON PARKWAY SUITE 600 HOUSTON, TX 77024

Re:
Environmental Services Bayou Pigeon, LA

Description	Unit	Qty	Rate	Total
Mobilize/Demobilize	lump sum	1	2,500.00	2,500.00T
DPT Rig, Portable Platform, Water Tank & Crew for (4)	per day	3	4,200.00	12,600.00T
30' soil borings & installation of (1) up to 60' - 1" PVC well				
* Daily rate NTE 10 hr. workday; Additional hrs. @ \$450.00 per hr.			0.00	0.00T
1" PVC Well Material	per ft.	50	5.00	250.00T
5'- 1" PVC Pre-Pack Screen	per each	2	175.00	350.00T
4" Above Grade Protective Casing up to 20'	per each	1	800.00	800.00T
Per-Diem	per day	6	450.00	2,700.00T
Furnish containment booms & Spill Kit	per day	3	100.00	300.00T
Marsh Master & Crew for (2) up to 30' soil borngs & 3/4" temporary wells	per day	2	3,500.00	7,000.00T
up to 30'- 3/4" PVC Well Material with 5" prepacked screen	per well	2	600.00	1,200.00T

Customer Acceptance of Cost Proposal

Authorized Signature _____

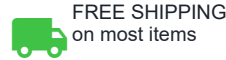
Date _____

*Payment Terms NTE 30 days upon project completion.

*1.5% Interest will be charged monthly to all overdue invoices.

Subtotal	\$27,700.00
Tax (0.0%)	\$0.00
Total	\$27,700.00

Walker-Hill Environmental, Inc
Foxworth, MS Office
Phone: (601) 736-3500
Email: eric@whenv.com



Home > Pumps > Submersible Pumps > 96160132

FREE SHIPPING on orders over \$20
Contiguous U.S. States

#5023204

BRAND: GRUNDFOS MODEL: 96160132 CONDITION: NEW SKU: 5023204 **\$802.55 Each**
FREE SHIPPING ON ORDERS OVER \$20



Grundfos 96160132 5 SQ05-180 SMARTFLO SQ SUBMERSIBLE PUMP 0.5HP 200-240V 50/60HZ
[View additional description](#)

Call or Chat for le confirm availabilit
Select Quantity

1 Returnable Payment r

Image for Illustration purposes only. Actual product may vary

Call or Chat for lead time confirm availability

Typically ships in: 1 day

Weight: 15.0 lb

Unit of measure: each

Contact supplier for technical support on:
 508-698-3100

Additional Description

Grundfos Grundfos 96160132

UPC: | UNSPSC: 40151513 | GTIN:

Pumps & Filtration > Well Pumps > Submersible Well Pumps

Grundfos Submersible Pump, Series: SQ Series, 4.4 gpm, 2 Wires, 4 Stage, 1/2 hp, 200/240 VAC, 5.2 A, 50/60 Hz, 1 ph, 10700 rpm Motor, Floating Impeller, 68 deg F, IP68, Thrust Bearing, Stainless Steel

Features:

- Dry running protection
- Permanent magnet motor with high efficiency
- Wear resistance from floating impellers
- Protection against up thrust



- High flow velocity
- Soft start - Reduces wear on motor and minimizes stress of the entire installation
- Over and under voltage protection
- Overload protection
- Over temperature protection
- Unique 3 in design
- Wide voltage window
- Automatic restart
- All stainless steel exterior design reduces risk of corrosion to a minimum
- High starting torque and deep setting handling
- No extra box needed
- Handle voltage fluctuation, protection and automatic restart
- Compact, built-in electronics
- High efficiency
- Basic version without communication

Specs:

- Impeller Type: Floating
- Number of Stages: 4
- Motor Speed: 10700 rpm
- Phase: 1 ph
- Number of Wires: 2
- Bearing Type: Thrust
- Temperature Rating: 68 deg F
- Enclosure Type: IP68
- Flow Rate: 4.4 gpm
- Frequency Rating: 50/60 Hz
- Power Rating: 1/2 hp
- Amperage Rating: 5.2 A
- Voltage Rating: 200/240 VAC
- Material: Stainless Steel
- Series: SQ Series

Packaging:

- Weight: 4.9 lb

Certifications/Standards:

AISI 304 | cUL/UL Listed

Warranty:

Limited

Documents

 Instruction/Installation Manual

 Specification Sheet

 Catalog

Specifications:

Rated Voltage

1x200-240



HP	0.939
Stages	4
Density (lb/ftBi)	62.29
Rate Flow (gpm)	4.4

Reviews

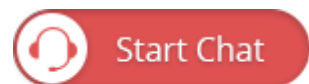


SKU: 5026852
 Great customer experience
 The product was exactly as expected, but the level of customer service is what sets MRO...
 Read more

SKU: 5024341
 Great experience
 Very responsive. Great communication. Easy to deal with and great follow up. Definitely will do...
 Read more

SKU: 5058047
 Grundfor pump
 Pump arrived ahead of schedule. Thanks so much.
 Read more

Company owned & operated in the U.S.
 MRO Supply, Inc. 2915 E Washington Blvd. Los Angeles, CA. 90023
 © 2018 MRO Supply, Inc. All rights reserved
 Call: (888)-671-2883



ZEALOUS

P.O. Box 92007
Lafayette, LA

Invoice

Date	Invoice #
2/9/2021	22869

Ship To
21-1023-06 ERM - Environmental Resource M Location: Bayou Pigeon Lease: Iberia

21-1023-06 ERM - Environmental Resource M
ERM - Environmental Resource Management
840 West Sam Houston Parkway North,
Suite 600
Houston, TX 77024

Zealous Energy Services
c/o Community First Bank
PO Box 10610
New Iberia, LA 70562

PO #					Terms
	**Please remit to:				Net 30
Serviced	Description	Qty	UoM	Rate	Amount
2/1/2021	Transport crew to inspect location. 1. M/V Butte II Crew Boat with Captain 2. SB-7 Spud Barge Rental 3. Fuel	80	GAL	950.00 550.00 3.00	950.00 550.00T 240.00T
2/2/2021	Load geoprobe and depart for location. 1. Lil Jared Crew Boat with Captain 2. SB-7 Spud Barge Rental 3. Fuel 4. Ms Katelyn Tug Boat with Captain & Deckhand 5. Fuel	25 125	GAL GAL	950.00 550.00 3.00 2,000.00 3.00	950.00 550.00T 75.00T 2,000.00 375.00T
2/3/2021	Assist at location. 1. M/V Butte II Crew Boat with Captain 2. SB-7 Spud Barge Rental 3. Fuel 4. Ms Katelyn Tug Boat with Captain & Deckhand 5. Fuel	50 80	GAL GAL	950.00 550.00 3.00 2,000.00 3.00	950.00 550.00T 150.00T 2,000.00 240.00T
2/4/2021	Assist at location. 1. M/V Butte II Crew Boat with Captain 2. SB-7 Spud Barge Rental 3. Fuel 4. Ms Katelyn Tug Boat with Captain & Deckhand 5. Fuel	20 50	GAL GAL	950.00 550.00 3.00 2,000.00 3.00	950.00 550.00T 60.00T 2,000.00 150.00T
2/5/2021	Assist at location. 1. M/V Butte II Crew Boat with Captain 2. SB-7 Spud Barge Rental 3. Fuel	20	GAL	950.00 550.00 3.00	950.00 550.00T 60.00T

Website <http://zealousenergyservices.com>

Phone # (337) 332-4390

Fax # (337) 332-4394

Penalty Interest of 1.5% per month will be assessed on all invoices paid past 30 days.

ZEALOUS

P.O. Box 92007
Lafayette, LA

Invoice

Date	Invoice #
2/9/2021	22869

Ship To
21-1023-06 ERM - Environmental Resource M Location: Bayou Pigeon Lease: Iberia

21-1023-06 ERM - Environmental Resource M
ERM - Environmental Resource Management
840 West Sam Houston Parkway North,
Suite 600
Houston, TX 77024

Zealous Energy Services
c/o Community First Bank
PO Box 10610
New Iberia, LA 70562

PO #					Terms
	**Please remit to:				Net 30
Serviced	Description	Qty	UoM	Rate	Amount
2/6/2021	4. Ms Katelyn Tug Boat with Captain & Deckhand 5. Fuel	100	GAL	2,000.00 3.00	2,000.00 300.00T
	Depart for dock. Unload geoprobe.				
2/7/2021	1. Ms Katelyn Tug Boat with Captain & Deckhand 2. SB-7 Spud Barge Rental 3. Fuel 4. Loading / Unloading of Geoprobe	175	GAL	2,000.00 550.00 3.00 2,748.00	2,000.00 550.00T 525.00T 2,748.00
	Demobe SB-7.				
	1. Mobe / Demobe Spud Barge.			5,300.00	5,300.00

Website	http://zealousenergyservices.com
Phone #	(337) 332-4390
Fax #	(337) 332-4394

Subtotal	\$28,273.00
Sales Tax (7.7%)	\$421.58
Total	\$28,694.58
Balance Due	\$28,694.58

Penalty Interest of 1.5% per month will be assessed on all invoices paid past 30 days.



Recycling for a Cleaner Environment • Sustainability at Work

Invoice # 69056-D

Service Date 02/04/2021
Invoice Date 02/28/2021

Bill To :

DIVERSIFIED ENVIRO PRODUCTS SERVICES INC
PO BOX 490
BROUSSARD, LA 70518

Location :

DIVERSIFIED ENVIRO PRODUCTS SERVICES
FRANKLIN, LA.

PO: 21-10006
DIRT/DEBRIS

Vessel:

T 252001

Code	Description	Quantity	Charge	Amount
1D55	Used oil contaminated soil	4.00	150.00	600.00
141	Fuel Surcharge / Testing / Document Storage	1.00	8.50	8.50
			Total Due :	\$608.50

We accept all major credit cards with a 3% convenience fee
Make Checks Payable to: Aaron Oil Company LLC.

Terms: Net 30 Days. 1.5% service charge on all past due accounts.

Aaron Oil Company, LLC | PO Box 674220 Dallas, TX 75267-4220

T. (800) 239-4549 | T. (251) 479-1616

www.aaronoil.com | www.tradebeusa.com

Federal EPA ID# ALD983180233



- About ▾
- Dredging Equipment
- Dredging Services
- Projects & Experience
- Blog
- Contact

Javeler DP-20

The Javeler DP-20 is currently the smallest electric dredge pump in our fleet. This lightweight and compact dredge system moves impressive volumes of material with very minimal footprint requirements.

Product Details

- Discharge Diameter:** 4"
- Standard Motor HP:** 20
- Depth Range:** 0'-150'
- Capacity BEP (gpm@head):** 400 @ 65'
- Production (yd³/hr.):** 0-50
- Power Source:** 40kW Generator
- Voltage:** 220/460/575
- Electric Cable Length:** 220'
- Max Solid:** 1.4" Ø
- Pump Weight:** 1,200 lbs.

Get a Quote →

24 Hour Support

Javeler is committed to providing exceptional customer service. Our experienced and knowledgeable team gladly accepts the opportunity to assist you 24 hours a day. Our centrally located Broussard, LA operations headquarters enables quick response to the entire Gulf Coast.

Field Personnel

Our team of qualified field technicians provides expertise in equipment layout, dredging support, equipment maintenance/repair, and daily reporting to ensure optimal productivity and, most importantly, a safe operating environment. Every field technician is TWIC, SafeGulf, HUET, CPR and Rigging certified.

Experience

Javeler offers more than just excavation equipment. After 50+ years, Javeler remains an innovative leader in applied and responsive dredging solutions. Pioneering deep-hole excavation in the Gulf of Mexico, Javeler remains

- Package Components ▾
- Hose Reels ▾
- Jet Pumps ▾
- Power Pakcs ▾
- Specialized Packages ▾
- Submersible Pump Fleet ▾



- About ▾
- Dredging Equipment
- Dredging Services
- Projects & Experience
- Blog
- Contact

Schedule your next dredging project with Javeler Marine Services today.

First Name	Last Name
Email	Phone Number
Interested in... ▾	
Message	
Send Message	



Javeler Marine Services, LLC

119 Ida Rd
 Broussard, LA 70518
 P: (337) 445-1034
 F: (337) 445-1035

Mailing Address

Javeler Marine Services, LLC
 PO. Box 309
 Broussard, LA 70518

- About
- Dredging Equipment
- Dredging Services
- Projects & Experience
- Blog
- Contact
- Site Map
- Employee Login



RE: ERM JLS Site

Dear Mr. Cooper,

Thank you for the opportunity to present this proposal for the JLS Job Site. Our team at Zealous Energy Services have the experience and expertise to complete this project within the timeframe outlined; safely and efficiently. **Work hard. Solve Smart. Stay Safe™**. is our pledge to all our clients to fulfill our commitment on every project that we undertake.

This project will involve the covering of sediment in an area of approximately 16,000 sq. ft. We will receive, transport, and place approximately 20,000 sq. ft. of geotextile over sediment then receive, transport, and place 171 super sacks of Aqua Block.

Our team has over 100 years of combined experience in this type of project with a perfect safety record. We are honored to have earned LWCC's prestigious SAFEST 70 Award for 2019. This award is given to the top 70 safety performance companies among all policy holders of LWCC (approximately 20,000). Our safety record is because of the commitment of our managers, employees, and customers. Zealous believes all projects can be completed safely and efficiently and has consistently invested in our people and programs to accomplish our goals.

Thanks again for your consideration and we are hopeful that we will be awarded the project.

Respectfully,

Mitch Shoffiett

Mitch Shoffiett
Vice President

Table of Contents

1.0 Executive.....	3
2.0 Health and Safety.....	4
3.0 Bid Estimate.....	5
3.1 Assumptions and Considerations.....	6
4.0 Project Schedule.....	7
5.0 On Site Equipment and Personnel.....	8

1.0 EXECUTIVE SUMMARY

Founded in 2010 as a single office, 5-person, energy services business we have grown to 6 locations in 3 states; Louisiana, Texas, and New Mexico. Our goal is creating value for each of our stakeholders – our employees, customers, shareholders, and communities.

We have extensive experience in remediation of soil & water, facilities decommissioning, frac water and waste pond closures, and oil/chemical spills cleanup on land and inland waters.

Other services include:

- Drill site construction, land, and inland waters
- Pipeline construction, land, and inland waters
- Production facility construction
- Construction and maintenance crews
- Marine services, including, dock services, short- and long-term vessel rentals, tugboats, crew boats and barges

With a seasoned management team with over 100 years of experience our culture has 5 guiding principles.

- Integrity, humility, & respect
- Entrepreneurial & value creation
- Customer focus
- Safety & environmental excellence
- Professionalism

Work hard. Solve smart. Stay safe™. Is more than just our trademark, we live by it.

2.0 HEALTH AND SAFETY

The safety and health of all our employees are a prime importance to our organization. Management holds in the highest regard the safety, welfare, and health of its employees. It is our belief that accidents that injure people and damage company assets cause needless human suffering, inconvenient expenses. The Company will provide employees a safe work environment as free from recognized hazards as is possible and practical. Control of potential safety and health hazards and their elimination is the primary objective of this company's safety program.

Each supervisor at every level of management is accountable for safe, efficient work practices and procedures. Each supervisor is responsible for ensuring that our safety programs are explained and understood by all employees.

As a team member, all employees must accept the responsibility to prevent injuries and accidents by following the safety policies outlined in this program, in doing so all employees, their families, and the company will benefit.

Our company has been very successful in maintaining a safe work environment for our team members as well as for our customers. **Zealous Energy received the 2019 LWCC Safest 70 Award as evidence our performance.**

WE CONTINUE TO PROGRESS TO OUR GOAL OF ZERO INJURIES AND ILLNESS

YEAR	TRIR	EMR
2020	.95	.68
2019	.80	.84
2018	.94	.92

Zealous Energy services will staff each project with employees that are trained and experienced in the task that they are assigned to perform. Equipment operators will be certified by the Company to operate the equipment that they are using. Equipment will be well maintained and in good working order. JSA's will be performed by the team and documented daily and as conditions may change. All employees have Stop Work Authority and are expected to exercise it if they feel something is not safe or they do not understand the task at hand. Pre-start meetings will be attended, and periodic safety visits/audits will be conducted by one of our safety personnel.

Zealous Energy Services will work with our customer to plan the project to enhance and ensure that the proper staff, training, equipment, and procedures are in place for the start and duration of the job. *Our goal is to work with our customers to provide our expertise and services while achieving ZERO INJURIES & INCIDENTS.*

3.0 BID ESTIMATE

Task	Description	Unit	Unit Cost	Approx. Units	Cost
1	Tug w/ Captain and Deckhand	Lump Sum	\$19,950	1	\$19,950
2	Crane Barge w/ Operator	Lump Sum	\$29,750	1	\$29,750
3	Superintendent	Lump Sum	\$7,560	1	\$7,560
4	Pusher w/ Crew	Lump Sum	\$11,760	1	\$11,760
5	Deck Barge	Lump Sum	\$1,575	1	\$1,575
6	Crew Boat w/ Captain	Lump Sum	\$8,750	1	\$8,750
7	Fuel	Lump Sum	\$7,000	1	\$7,000
8	Dock Fee	Lump Sum	\$1,250	1	\$1,250
9	Mobilization/Demobilization	Lump Sum	\$7,600	1	\$7,600
Total Proposed Cost					\$95,195

3.1 ASSUMPTIONS AND CONSIDERATIONS

1. ERM is responsible for any permits or licenses required by state and federal agencies.
2. State and Parish taxes will be charged at time of billing.
3. If weather delays any part of the project, all equipment will be charged at half of T&M rates.
4. Geotextile and Aqua Block will be provided by ERM.
5. This quote is good for 30 days.

4.0 PROJECT SCHEDULE

Day 1	Mobilize equipment and receive material at Butte LaRose dock.
Day 2	Continue to receive materials at Butte LaRose dock.
Day 3	Mobilize equipment and material to location at JLS site. Lay out Geotextile fabric.
Day 4-6	Cut and empty Aqua Block super sacks in place.
Day 7	Demobilize equipment to Butte LaRose dock.

5.0 On Site Equipment and Personnel

Equipment	Personnel
900 HP Tug	Captain and Deckhand
Crane Barge	Crane Operator
Deck Barge	Superintendent, Pusher, (2) Roustabouts
Crew Boat	Crew Boat Captain

*Equipment subject to change based on availability.

Free Shipping on All Orders Over \$100 - Questions? Call (800) 748-5647



What are you looking for?



Questions?

on all orders over \$75
(800) 748-5647

[Home](#) >

Free Shipping on All Orders Over \$100 - Questions? Call (800) 748-5647



Mirafi 170N Geotextile Fabric - 15' x 300' Roll - TenCate

\$994.26

SKU MIRAFI-170N-15x300

Mirafi 170N Geotextile Fabric - 15' x 300' Roll

Model: 170N-15X300

Brand: Mirafi - TenCate

Size: 15' x 300'

Square Feet / Roll: 4,500

Fabric Specifications: [Download 170N Specification Sheet](#)

FREE SHIPPING

[View our Full Selection of Mirafi Fabric >](#)

Do you need a written quote? [Submit a quote request >](#)

NOTE: Mirafi branded products are ineligible for return or order cancellation once the order has been shipped. If you would like to purchase an equivalent fabric which is eligible to be returned with a standard restocking fee please give us a call at (800) 748-5647.

This Product is Stocked in the California and Georgia Distribution Centers Only.

Free Shipping on All Orders Over \$100 - Questions? Call (800) 748-5647

Require a written quote?

[Request Online >](#)

Questions? Call (800) 748-5647

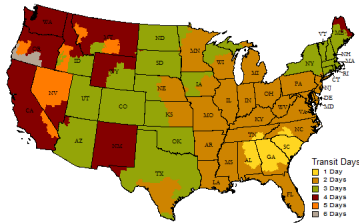
PRODUCT SUMMARY

- **Construction:** Mirafi ® N-Series polypropylene nonwoven geotextiles easily conform to the ground or trench surface for trouble free installation.
- **Strength:** Mirafi ® N-Series geotextiles withstand installation stresses with high puncture and tear resistance.
- **Drainage:** High permittivity properties provide high water flow rates while providing excellent soil retention.
- **Environmental:** Mirafi ® N-Series geotextiles are chemically stable in a wide range of aggressive environments.
- **Cost Effective:** Mirafi ® N-Series geotextiles provide economical solutions to many civil engineering applications including a cost effective alternative to graded aggregate filters.

Fabric Shipping Time - Georgia Warehouse:

By default, Mirafi fabric orders ship from the Georgia warehouse where a full stock of the Mirafi fabric types are maintained. Most orders ship same day (M-F) if order is placed before 11:00 AM EST. Transit times displayed in the map are listed in business days, are approximate and are specific to the Mirafi fabric line. The day that the order is shipped is not counted as a transit day. Most Mirafi fabric rolls ship via LTL freight. For expedited shipping rates please call: (800) 748-5647

The transit times displayed on the map are for our free shipping option.

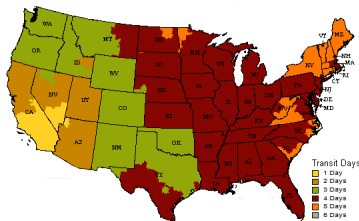


Fabric Shipping Time - Southern California Warehouse:

Note: By default, orders ship from the Georgia warehouse with the standard transit times shown above. If you would like your order to ship from the Southern California warehouse (Mira Loma) you must first fill out a stock check request. Orders can also be picked up at this warehouse location if preferred. **Southern California warehouse orders must be placed over the phone.**

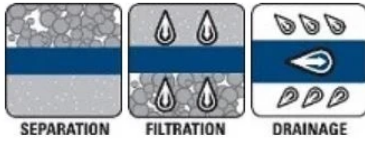
Most Mirafi fabric California warehouse orders ship same day (M-F) if order is placed before 11:00 AM EST. Transit times displayed in the map are listed in business days, are approximate and are specific to the Mirafi fabric line. The day that the order is shipped is not counted as a transit day. Most Mirafi fabric rolls ship via LTL freight. For expedited shipping rates please call: (800) 748-5647

The transit times displayed on the map are for our free shipping option.



Free Shipping on All Orders Over \$100 - Questions? Call (800) 748-5647

PRODUCT INFORMATION - N SERIES FABRICS:



TenCate Mirafi® N-Series nonwoven polypropylene geotextiles are staple fibers used for soil separation and drainage. They combine high durability, along with excellent physical and hydraulic properties. TenCate Mirafi® N-Series geotextiles are produced from polypropylene staple fibers and combine high water flow rates and durability while providing excellent soil retention. TenCate Mirafi® N-Series geotextiles are used in a wide variety of applications including subsurface drainage and roadway separation applications.

TenCate Mirafi® N-Series nonwoven polypropylene geotextiles function for:

- Separation
- Drainage
- Filtration

The Difference TenCate Mirafi® N-Series nonwoven polypropylene geotextiles make:

- Easily conforms to ground or trench surfaces for trouble-free installation
- Cost effective
- High permittivity properties allow high water flow while having excellent soil retention
- Chemically stable for use in aggressive environments

System Solutions:

Waste Management

- Landfill Drainage and Filtration
- Barriers

Water Management

- Subsurface Drainage
- Highways
- Under airfields
- Athletic fields
- Water Containment
- Water Protection

TenCate Mirafi® N-Series nonwoven polypropylene geotextiles...geosynthetics that make a difference.

TenCate Mirafi® N-Series

[Product Description Sheet](#)

[Installation Guidelines](#)

CSI Specifications

[Technical Notes](#)

[CAD Drawings](#)

Technical Data Sheet PDF (MARV)

135N	180N
140NL	180NC
140NC	1100N
140N	1100NC
150N	1100NPA
160N	1120N
170N	1160N

Case Studies

- [140NL - Subsurface Drainage - I20 - Birmingham, AL](#)
- [140NC - Subsurface Drainage - Kuala Lumpur, Malaysia](#)

Free Shipping on All Orders Over \$100 - Questions? Call (800) 748-5647

- [160N - Weided wire wall - Burlington- Ontario, Canada](#)
- [170N - New Runway Construction - Denver, CO](#)
- [170N - Filtration & Separation - Titan Stadium - Oshkosh, WI](#)
- 170N & 1120N - Area Stabilization - Kunatan, Malaysia
- [180N - Landslide Repair - Mississippi River](#)
- [180N - Reinforced Soil Slope - Bennington Bypass, VT](#)
- [1100N - Erosion Control - Corona, CA](#)
- [1160N - Geary Dike Levee Repair - Klamath Falls, OR](#)
- [170N & 180N - Subgrade Separation/Drainage - Worley, ID](#)
- [140N & 140NL - Base Reinforcement & Drainage - Boston Logan Airport, MA](#)
- [160N - Wrapped Face Retaining Wall with Concrete Panels - Spokane, WA](#)
- [160N - Filtration, Drainage & Vegetation Inhibitor - El Paso, TX](#)
- [140NC - Subsurface Drainage - Ontario, Canada](#)
- [180N - Slope Repair - St. Louis, MO](#)

Mirafi Non-Wovens - N series

Show 30 entries

Search:

PRODUCT	▲ DIMENSIONS	◆ SF/ROLL	◆ SY/ROLL	◆ Min. Order
1100N	15' X 300'	4500	500	1
1100NC	15' X 300'	4500	500	1
1120N	15' X 300'	4500	500	1
1160N	15' X 300'	4500	500	1
1160N'	15' X 150'	2250	250	1
135N	12.5' X 360'	4500	500	117
135N	15' X 360'	5400	600	1
140N	12.5' X 360'	4500	500	1
140N	15' X 360'	5400	600	1
140N	15' X 360'	5400	600	1
140N Orange	15' X 360'	5400	600	1
140NC	12.5' X 360'	4500	500	1
140NC	15' X 360'	5400	600	1
140NL	12.5' X 360'	4500	500	1
150N	15' X 300'	4500	500	117
160N	12.5' X 360'	4500	500	1
160N	15' X 300'	4500	500	1
160N Orange	15' X 300'	4500	500	117
170N	15' X 300'	4500	500	1
180N	12.5' X 360'	4500	500	1
180N	15' X 360'	5400	600	1
180N Orange	15' X 300'	4500	500	1
180NC	15' X 300'	4500	500	1
MSCAPE	3' X 300'	900	100	15
MSCAPE	6' X 300'	1800	200	3
MSCAPE	9' X 300'	2700	300	1

◀ Previous Next ▶

All Mirafi Products

Free Shipping on All Orders Over \$100 - Questions? Call (800) 748-5647

PRODUCT	▲ DIMENSIONS	▼ SF / ROLL	▼ SY / ROLL	▼ Min. Order
10XT	12' X 200'	2400	267	1
1100N	15' X 300'	4500	500	1
1100NC	15' X 300'	4500	500	1
1120N	15' X 300'	4500	500	1
1160N	15' X 150'	2250	250	1
1160N	15' X 300'	4500	500	1
135N	12.5' X 360'	4500	500	117
135N	15' X 360'	5400	600	1
140N	12.5' X 360'	4500	500	1
140N	15' X 360'	5400	600	1
140NC	12.5' X 360'	4500	500	1
140NC	15' X 360'	5400	600	1
140NL	12.5' X 360'	4500	500	1
140NL	15' X 360'	5400	600	1
140NLOrange	15' X 360'	5400	600	1
150N	15' X 300'	4500	500	117
160N	12.5' X 360'	4500	500	1
160N	15' X 300'	4500	500	1
160N Orange	15' X 300'	4500	500	117
170N	15' X 300'	4500	500	117
180N	12.5' X 360'	4500	500	1
180N	15' X 360'	5400	600	1
180N Orange	15' X 300'	4500	500	1
180NC	15' X 300'	4500	500	1
20XT	12' X 200'	2400	267	1
22XT	12' X 200'	2400	267	1
24XT	12' X 200'	2400	267	1
2XT	12' X 150'	1800	200	1
3XT	12' X 150'	1800	200	1
500X	12.5' X 432'	5400	600	1
500X	15' X 360'	5400	600	1
500X	17.5' X 309'	5400	600	1
550X	12.5' X 360'	4500	500	1
550X	15' X 300'	4500	500	117
550X	17.5' X 258'	4515	502	1
5XT	12' X 150'	1800	200	1
600X	12.5' X 360'	4500	500	1
600X	15' X 300'	4500	500	1
600X	17.5' X 258'	4515	502	1
7XT	12' X 200'	2400	267	1

Free Shipping on All Orders Over \$100 - Questions? Call (800) 748-5647

8XT	12' X 200'	2400	267	1
BXG110	12.9' x 246'	3177	356	1
BXG120	12.9' x 164'	2133	237	1
FW300	12.5' X 300'	3750	417	1
FW402	12.5' X 300'	3750	417	1
FW403	12.5' X 300'	3750	417	1
FW404	15' X 300'	4500	500	1
FW500	15' X 300'	4500	500	1
FW700	12' X 300'	3600	400	1
FW700	6' X 300'	1800	200	1
G100N	4' X 50'	200	22.2	1
G100NC	4' X 50'	200	22.2	1
G100W	4' X 50'	200	22.2	1
G200N	4' X 50'	200	22.2	1
H2Ri	15' x 300'	4500	500	1
H2Ri	17' x 300'	5100	567	1
HP270	12.5' X 375	4687.5	521	1
HP270	15' X 300'	4500	500	1
HP370	15' X 300'	4500	500	1
HP570	15' X 300'	4500	500	1
HP570	17' X 265'	4500	500	1
HP770	15' X 300'	4500	500	1
Miramesh GR	8' X 150'	1200	134	1
Miramesh TR	8' X 150'	1200	134	117
MPBBC1450	14' X 300'	4203	467	1
MPG100	12.5' X 150'	1881	209	117
MPG100	6.25' X 300'	1881	209	1
MPG4	12.5' X 150'	1881	209	1
MPM30	12.5' X 360'	4500	500	1
MPM50	12.5' X 250'	3123	347	1
MPV400	10.5' X 360'	3780	420	1
MPV400	12.5' X 360'	4500	500	1
MPV500	10.5' X 360'	3780	420	1
MPV500	12.5' X 360'	4500	500	117
MPV600	12.5' X 360'	4500	500	1
MPV700	12.5' X 360'	4500	500	117
MSCAPE	3' X 300'	900	100	1
MSCAPE	6' X 300'	1800	200	1
MSCAPE	9' X 300'	2700	300	1
MTK 1' W	1' X 200'	200	22.2	1
MTK 2' W	2' X 100'	200	22.2	1

Free Shipping on All Orders Over \$100 - Questions? Call (800) 748-5647

MTK 3' W	3' X 50'	150	16.7	1
RS280I	15' X 300'	4500	500	1
RS280I	17' X 300'	5100	567	117
RS380I	15' X 300'	4500	500	1
RS380I	17' X 300'	5100	567	1
RS580I	15' X 300'	4500	500	1
RS580I	17' X 300'	5100	567	1
S1000	15' X 300'	4500	500	1
S1200	15' X 300'	4500	500	1
S1600	15' X 300'	4500	500	1
S600	15' X 300'	4500	500	1
S800	15' X 300'	4500	500	1
TM13C	12' X 75'	900	100	1
TM14S	12' X 75'	900	100	1

◀ Previous Next ▶

Search

Copyright © 2021 Paramount Materials.



**Phone Memo**

To Calvin Barnhill and Phil Amy/Northstar

From Lance Cooper

Date 20 April 2021 1400 hrs

Reference 0519829

Subject Phone Conversation regarding SWD costs [Add subject]

LC called CB and PA to discuss cost estimates for pumps, piping and SWD completion for hypothetical plan for JLS.

Pump type for SWD: Triplex positive displacement pump (Wheatley or equivalent, ~70 hp)

Pump costs: \$20K

Total pump costs: \$30K for pump, engine, and Nowata filter

Replacement: Once during the 30 year life

O&M: \$50k over the life of the system

Installation depth: 200' below the USDW, clean water sand, low gamma, good SP

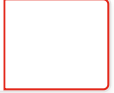
Review SONRIS, find USDW, review depths of nearby wells, scale costs that we received from Peak Energy to account for shallower depth.

Free Shipping on All Orders Over \$100 - Questions? Call (800) 748-5647



CONSTRUCTION - INDUSTRIAL - LANDSCAPE

What are you looking for?



Questions?

on all orders over \$75
(800) 748-5647

[Home](#) >

Free Shipping on All Orders Over \$100 - Questions? Call (800) 748-5647



Turbidity Curtain Barrier - Type 1 DOT - 10' x 50'

\$1,008.34

SKU TUR-10X50-1-DOT

Turbidity Curtain Barrier - Type 1 DOT - 10' x 50'

Model: TC-10X50-D

Brand: Tough Guy / AER-FLO

Size: 10' x 50'

Product Specifications: [Download Printable Spec Sheet >](#)

Lead Time: Please expect a 5-7 business day lead time prior to shipping on this product.

FREE SHIPPING

[VIEW OUR FULL SELECTION OF TURBIDITY CURTAINS >](#)

DO YOU NEED A WRITTEN QUOTE? [SUBMIT A QUOTE REQUEST >](#)

FREE SHIPPING

Require a written quote?

[Request Online >](#)

Free Shipping on All Orders Over \$100 - Questions? Call (800) 748-5647

PRODUCT INFO:

- Restricts the flow of sediment-laden stormwater runoff from a construction site, to keep it contained in a limited area, and allow the sediment to settle out before being carried into adjacent or joining watercourses.
- Type 1.DOT is recommended for construction sites located in protected areas that are exposed only to light winds and to current velocities of less than one foot per second. This type of site may include ponds, shallow lakes, small streams and marshes
- Consist of a top flotation boom, an impervious fabric curtain extending downward under water, and a heavy galvanized steel chain sealed into a hem along the entire bottom of the curtain to provide ballast to keep the curtain vertical in the water.
- Anchorage consisting of stakes or concrete blocks may be required to maintain the barrier in its required position. Barrier sections are connected by rope lacing or nylon ties which must be furnished by others.

RESOURCES:

- [Turbidity Curtain Guide](#)
- [Download Printable Spec Sheet](#)

Tough Guy® Floating Turbidity Barrier Type 1.DOT

Specifications (ST: 10/08)

Fabric - 18 oz. nominal laminated vinyl/polyester having the following characteristics:

Construction - vinyl laminate on 9X9 1000 x 1300 denier polyester scrim Weight - 18.5 oz. per sq. yd. (434 gr./sq. m.)

Adhesion - 24 x 20 lb./2"

Grab Tensile - 410 x 410 lb./in. (430 x 421 daN/5cm.)

Free Shipping on All Orders Over \$100 - Questions? Call (800) 748-5647

Hydrostatic - 600 psi (4.107 kPa) Cold resistance to crack: -40° F/C

All seams heat sealed

5/8 inch diameter poly rope reinforced vertical edges

#4 brass grommets

1/4 in. galvanized chain ballast

EPS flotation, 6 in. x 6 in., 13.5 lb./ft. buoyancy in fresh water and 14.4 lb./ft buoyancy in saltwater.

Looking for a Custom Depth Or Length Barrier?

Custom sizes are available on orders of 5+ barriers. [Request Quote >](#)

[VIEW OUR FULL SELECTION OF TURBIDITY CURTAINS >](#)

Type 1 Turbidity Curtains

Type 2 Turbidity Curtains

Free Shipping on All Orders Over \$100 - Questions? Call (800) 748-5647

Type 3 Turbidity Curtains

Search

Copyright © 2021 Paramount Materials.



Shawn Wiggins

From: Randy Joubert <randy@zealousenergy.com>
Sent: Thursday, April 1, 2021 2:07 PM
To: Lance Cooper
Cc: Shawn Wiggins
Subject: RE: Cost estimate for Pigeon Bayou

CAUTION: This email originated from outside of the organization. Do not click links or open attachments unless you recognize the sender and know the content is safe.

Lance and Shawn, these are pretty accurate numbers.

300' silt curtain.....\$3,000
Dredge 1900 cy.....\$60'000
Transport sediment to dock.....\$15,000
Receive 100 tons of Portland cement.....\$3,000
Blend Portland cement.....\$30,000
Load into trucks.....\$10,000
Mobe & demobe.....\$20,000
Barge cleaning.....\$15,000

Thank you,



Randy Joubert Sales
PO Box 92007
Lafayette, LA 70509
p: 337.332.4390 c: 985.397.3868
randy@zealousenergy.com zealousenergyservices.com

From: Lance Cooper <Lance.Cooper@erm.com>
Sent: Thursday, April 1, 2021 11:36 AM
To: Randy Joubert <randy@zealousenergy.com>
Cc: Shawn Wiggins <Shawn.Wiggins@erm.com>
Subject: Cost estimate for Pigeon Bayou

Randy;

As we discussed, please provide a budget level estimate for the following:

- Place approximately 300' linear feet of silt curtain (I have purchase price and delivery to the dock)
- Dredge approximately 1900 cy of sediment (water depth = 10', sediment thickness = 3')
- Transport sediment to dock
- Receive 100 tons of Portland cement (I have purchase price and delivery to the dock)
- Blend Portland with sediment at dock

- Load into waste transport trucks (I have T&D costs already)
- Mobe, demobe, barge cleanout

Thanks;

Lance

Lance R. Cooper, PhD, PE
Principal Consultant

ERM

Three Lakeway | 3838 North Causeway Boulevard, Suite 3000 | Metairie, Louisiana | 70002-8334
D +1 504 846 9282 | M +1 315 246 4494 | T +1 504 831 6700
E lance.cooper@erm.com | W www.erm.com



This email and any files transmitted with it are confidential. It is for the intended recipient only. If you have received the email in error please notify the author by replying to this email and take the steps necessary to delete the message completely from your computer system. If you are not the intended recipient, you must not disclose, distribute, copy, print, or rely on this email. Any views expressed by an individual within this email which do not constitute or record professional advice relating to the business of the ERM companies, do not necessarily reflect the views of those companies. Michael Pisani & Associates, Inc. is a member of the ERM group of companies and is incorporated in Louisiana, USA with its principal place of business at 3838 North Causeway Boulevard, Suite 3000, Metairie, Louisiana 70002, USA. To find out how ERM manages personal data, please review our [Privacy Policy](#)

This electronic mail message may contain information which is (a) LEGALLY PRIVILEGED, PROPRIETARY IN NATURE, OR OTHERWISE PROTECTED BY LAW FROM DISCLOSURE, and (b) intended only for the use of the Addressee (s) names herein. If you are not the Addressee (s), or the person responsible for delivering this to the Addressee (s), you are hereby notified that reading, copying, or distributing this message is prohibited. If you have received this electronic mail message in error, please contact us immediately at (281) 600-1000 and take the steps necessary to delete the message completely from your computer system. Thank you, Environmental Resources Management.

Please visit ERM's web site: <http://www.erm.com>. To find out how ERM manages personal data, please review our [Privacy Policy](#)

ZEALOUS

ENERGY SERVICES

P. O. Box 129
Breaux Bridge, Louisiana 70517
Phone (337) 332-4390
Fax (337) 332-4394

August 15, 2018
MPA
Attn: Lance Cooper
lcooper@mpisani.com
Project: E. White Lake
Vermillion Parish

Zealous Energy Services, LLC is pleased to submit a quote on the above referenced project.
Prices are as follows:

Trucking costs

1) Carlyss, LA – 1,600 yards at \$40.00 per ton	\$64,000.00
2) Oakdale, LA – 1,600 yards at \$38.00 per ton	\$60,800.00

Disposal Costs

1) Carlyss, LA – 2,240 tons at \$43.00 per ton	\$96,320.00
2) Oakdale, LA – 2,240 tons at \$32.00 per ton	\$71,680.00

Notes:

- All applicable state and parish taxes will apply.

Mitch Shoffiett

Zealous Energy Services, LLC
PO Box 129
Breaux Bridge, La 70517