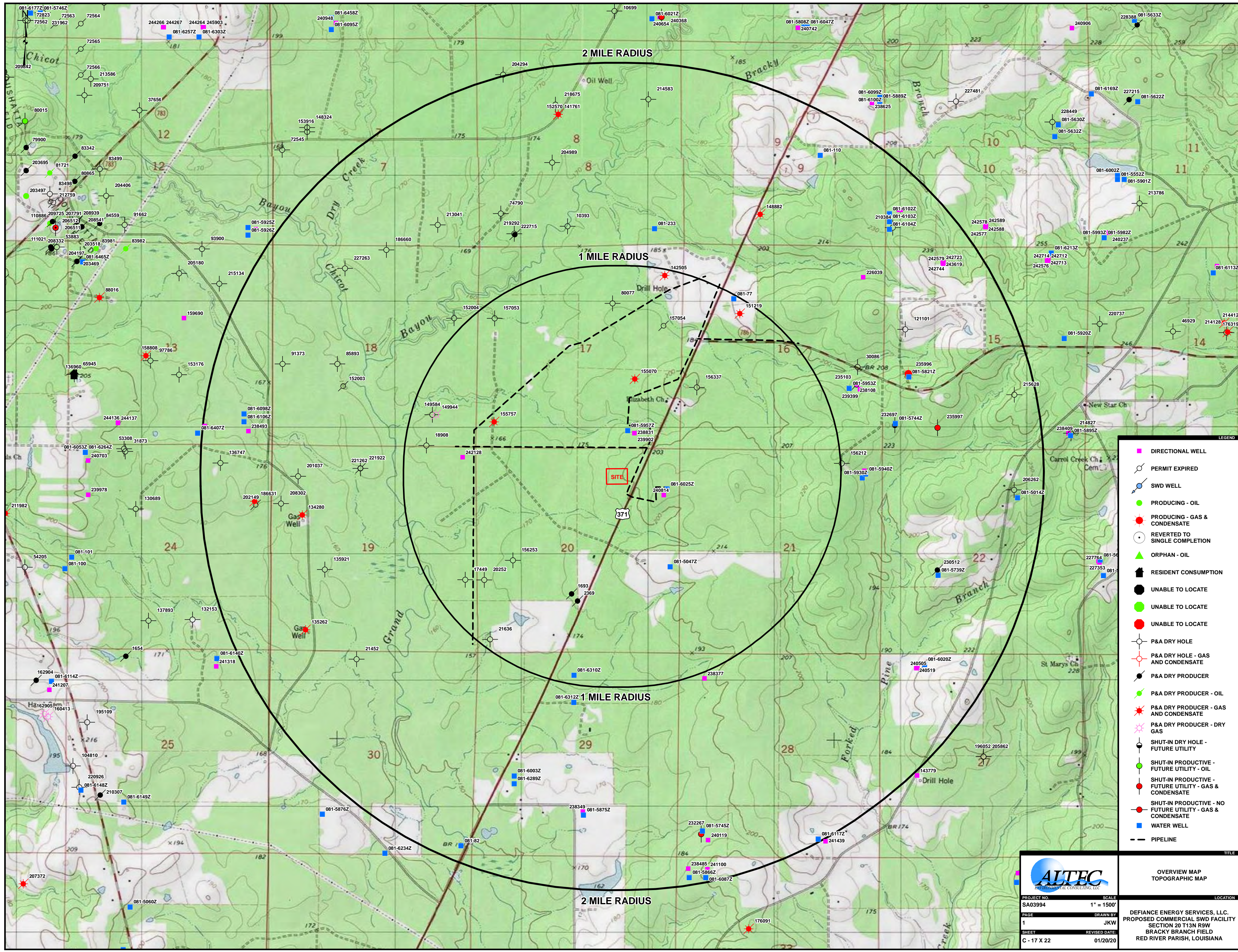


## **APPENDIX J – TOPOGRAPHIC MAP**

*Topographic map showing location of proposed site, highways, roads, water courses, flood plains, water wells, and pipelines within one mile of the site boundary (Section 519.C.10)*

A topographic map showing the location of the proposed facility, highways, roads, water courses, flood plains, water wells, and pipelines within one mile of the site boundary is included on the following map labeled Location Criteria Map - Topographical.



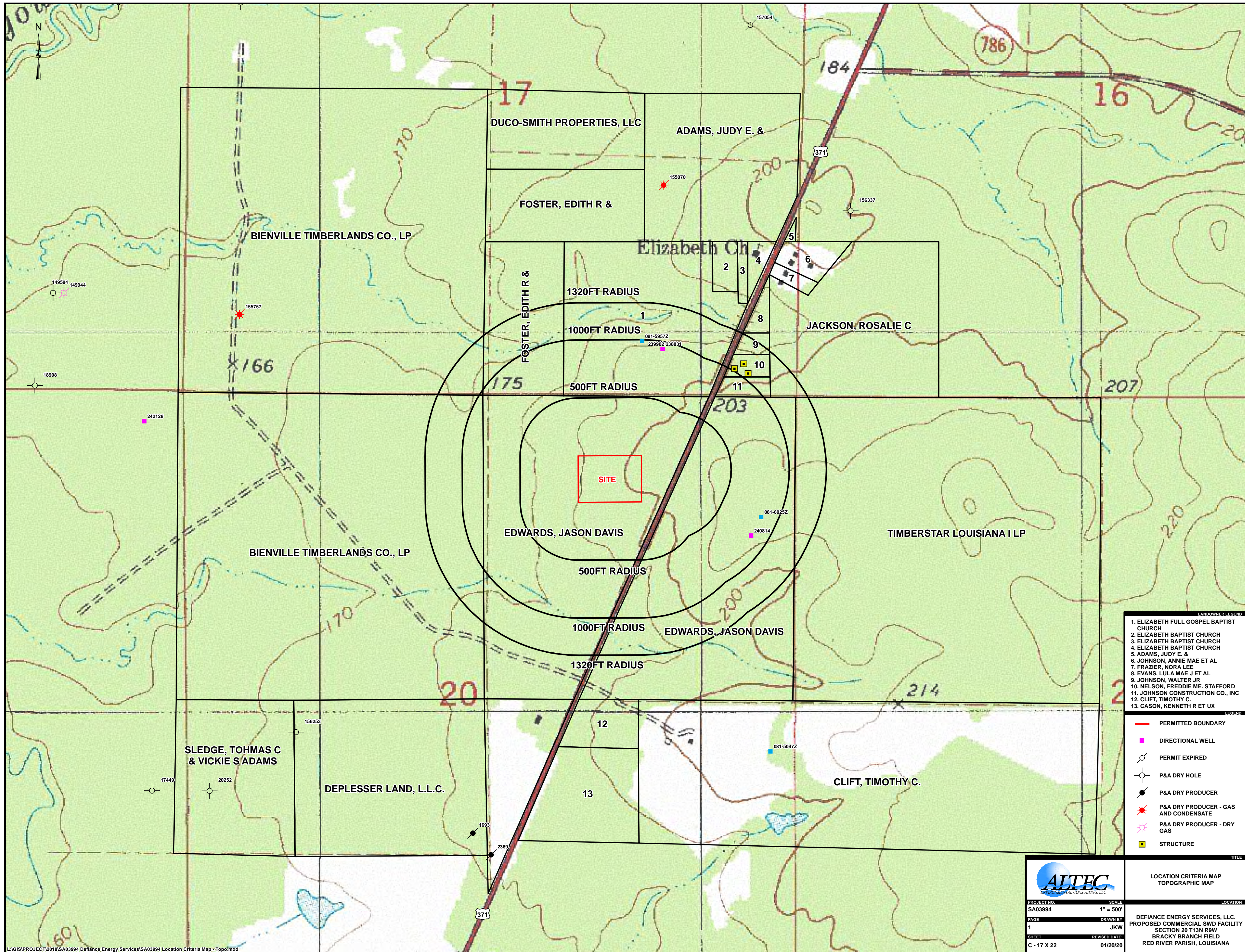
- LEGEND**
- DIRECTIONAL WELL
  - PERMIT EXPIRED
  - SWD WELL
  - PRODUCING - OIL
  - PRODUCING - GAS & CONDENSATE
  - REVERTED TO SINGLE COMPLETION
  - ▲ ORPHAN - OIL
  - RESIDENT CONSUMPTION
  - UNABLE TO LOCATE
  - UNABLE TO LOCATE
  - UNABLE TO LOCATE
  - P&A DRY HOLE
  - P&A DRY HOLE - GAS AND CONDENSATE
  - P&A DRY PRODUCER
  - P&A DRY PRODUCER - OIL
  - P&A DRY PRODUCER - GAS AND CONDENSATE
  - P&A DRY PRODUCER - DRY GAS
  - SHUT-IN DRY HOLE - FUTURE UTILITY
  - SHUT-IN PRODUCTIVE - FUTURE UTILITY - OIL
  - SHUT-IN PRODUCTIVE - FUTURE UTILITY - GAS & CONDENSATE
  - SHUT-IN PRODUCTIVE - NO FUTURE UTILITY - GAS & CONDENSATE
  - WATER WELL
  - PIPELINE



PROJECT NO.	SCALE	LOCATION
SA03994	1" = 1500'	
PAGE	DRAWN BY	
1	JKW	
SHEET	REVISED DATE:	
C - 17 X 22	01/20/20	

OVERVIEW MAP  
TOPOGRAPHIC MAP

DEFIANCE ENERGY SERVICES, LLC.  
PROPOSED COMMERCIAL SWD FACILITY  
SECTION 20 T13N R9W  
BRACKY BRANCH FIELD  
RED RIVER PARISH, LOUISIANA



- LANDOWNER LEGEND**
1. ELIZABETH FULL GOSPEL BAPTIST CHURCH
  2. ELIZABETH BAPTIST CHURCH
  3. ELIZABETH BAPTIST CHURCH
  4. ELIZABETH BAPTIST CHURCH
  5. ADAMS, JUDY E. &
  6. JOHNSON, ANNIE MAE ET AL
  7. FRAZIER, NORA LEE
  8. EVANS, LULA MAE J ET AL
  9. JOHNSON, WALTER JR
  10. NELSON, FREDDIE ME. STAFFORD
  11. JOHNSON CONSTRUCTION CO., INC
  12. CLIFT, TIMOTHY C.
  13. CASON, KENNETH R ET UX

- LEGEND**
- PERMITTED BOUNDARY
  - ◆ DIRECTIONAL WELL
  - ⊗ PERMIT EXPIRED
  - ⊙ P&A DRY HOLE
  - P&A DRY PRODUCER
  - ★ P&A DRY PRODUCER - GAS AND CONDENSATE
  - ✱ P&A DRY PRODUCER - DRY GAS
  - STRUCTURE

**ALTEC**  
ENVIRONMENTAL CONSULTING, LLC

PROJECT NO. SA03994  
 PAGE 1  
 SHEET C - 17 X 22

SCALE 1" = 500'  
 DRAWN BY JKW  
 REVISED DATE 01/20/20

**TITLE**

LOCATION CRITERIA MAP  
 TOPOGRAPHIC MAP

**LOCATION**

DEFIANCE ENERGY SERVICES, LLC.  
 PROPOSED COMMERCIAL SWD FACILITY  
 SECTION 20 T13N R9W  
 BRACKY BRANCH FIELD  
 RED RIVER PARISH, LOUISIANA