

B (W)

SUN EXPLORATION-PRODUCTION CO.
F MATTHEWS D, NO. 001
SERIAL NO. 174586
KB ELEV. - 139.92'

BMR OIL & GAS, INC.
F MATTHEWS, NO. 001
SERIAL NO. 234767
KB ELEV. - 146.0'

ARK-LA-TEX ENERGY, L.L.C.
RGRS LLC, NO. 001
SERIAL NO. 232802
KB ELEV. - 149'

PA PROSPECT CORPORATION
PROPOSED REIMER-CALHOUN
SWD NO. 001

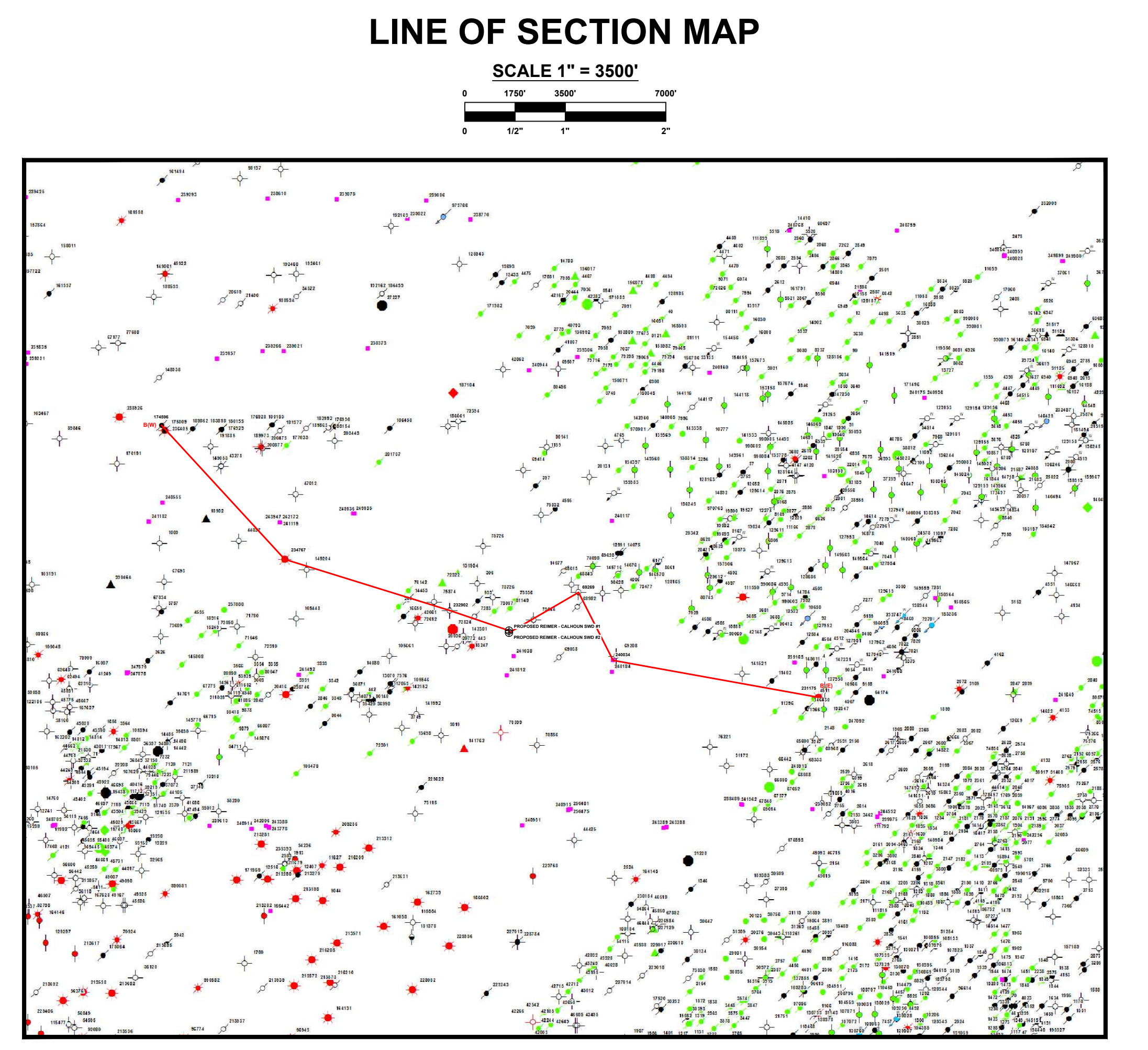
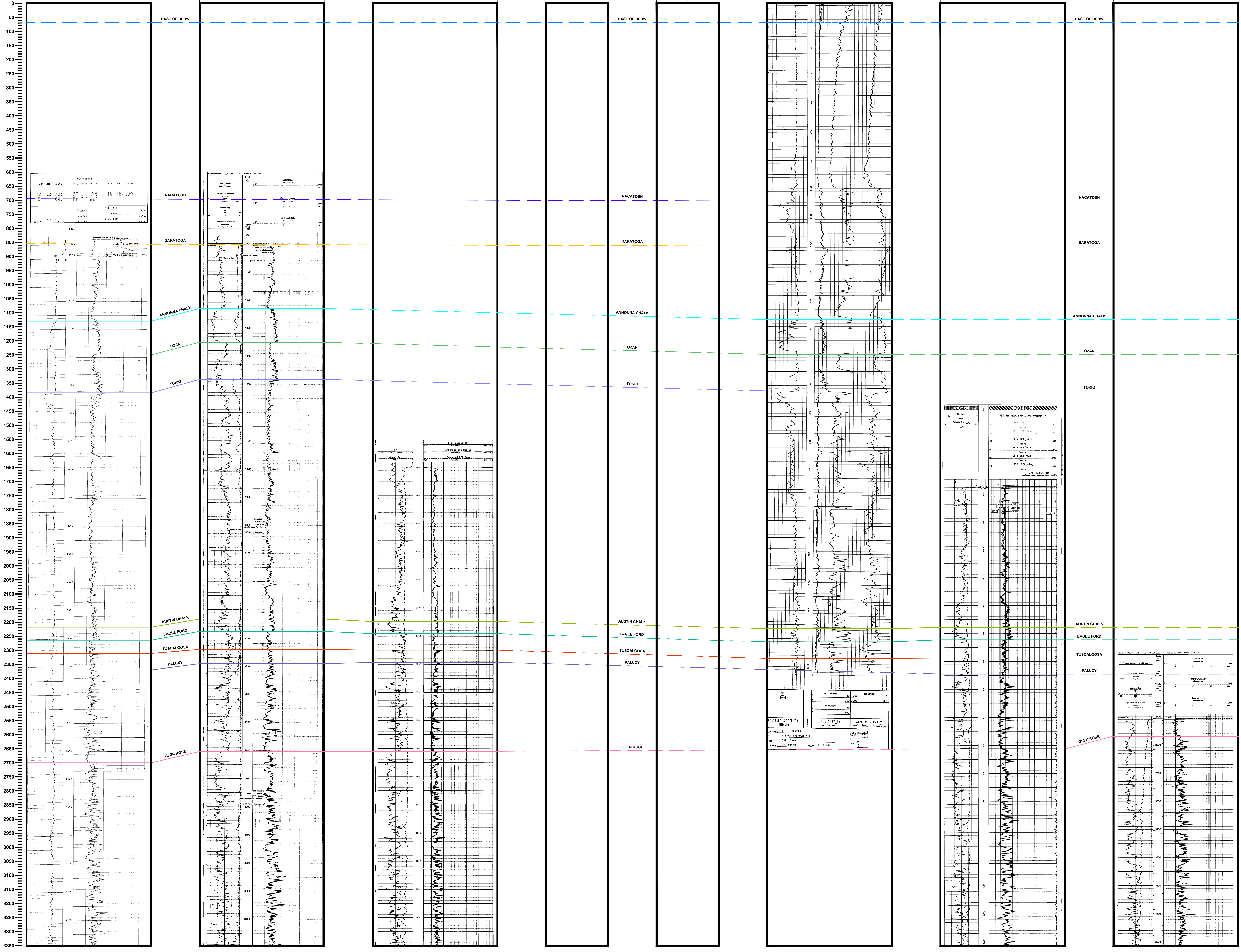
PA PROSPECT CORPORATION
PROPOSED REIMER-CALHOUN
SWD NO. 002

C.L. MORRIS
REIMER CALHOUN, NO. 001
SERIAL NO. 69289
KB ELEV. - 142'

BHP BILLION PETRO
BRIARWOOD 35 H, NO. 001
SERIAL NO. 240054
KB ELEV. - 159.4'

BSI OPERATING, LLC
ERH LIMITED ETAL, NO. 001
SERIAL NO. 231175
KB ELEV. - 163.0'

B' (E)



Legend

- BASE OF USDW
- TOP OF NACATOSH
- TOP OF SARATOGA
- TOP OF ANNONNA CHALK
- TOP OF OZAN
- TOP OF TOKIO
- TOP OF EAGLE FORD
- TOP OF TUSCALOOSA
- TOP OF PALUXY
- TOP OF GLEN ROSE

Scale
1" = 3500'

Vertical Scale
1" = 100'

Horizontal Scale
1" = 100'

Legend

- PROSPECTING, GEOLOGIC CROSS SECTION
- PA PROSPECT CORPORATION
- PROPOSED REIMER-CALHOUN SWD NO. 001
- SECTION B (W) AND B' (E)
- 11/15/00
- 11/15/00

B (W)

SUN EXPLORATION-PRODUCTION CO.
F MATTHEWS D, NO. 001
SERIAL NO. 174594
KB ELEV. - 139.92'

BMR OIL & GAS, INC.
F MATTHEWS, NO. 001
SERIAL NO. 234767
KB ELEV. - 145.0'

ARK-LA-TEX ENERGY, L.L.C.
RGRS LLC, NO. 001
SERIAL NO. 232802
KB ELEV. - 149'

PA PROSPECT CORPORATION
PROPOSED REIMER-CALHOUN
SWD NO. 001

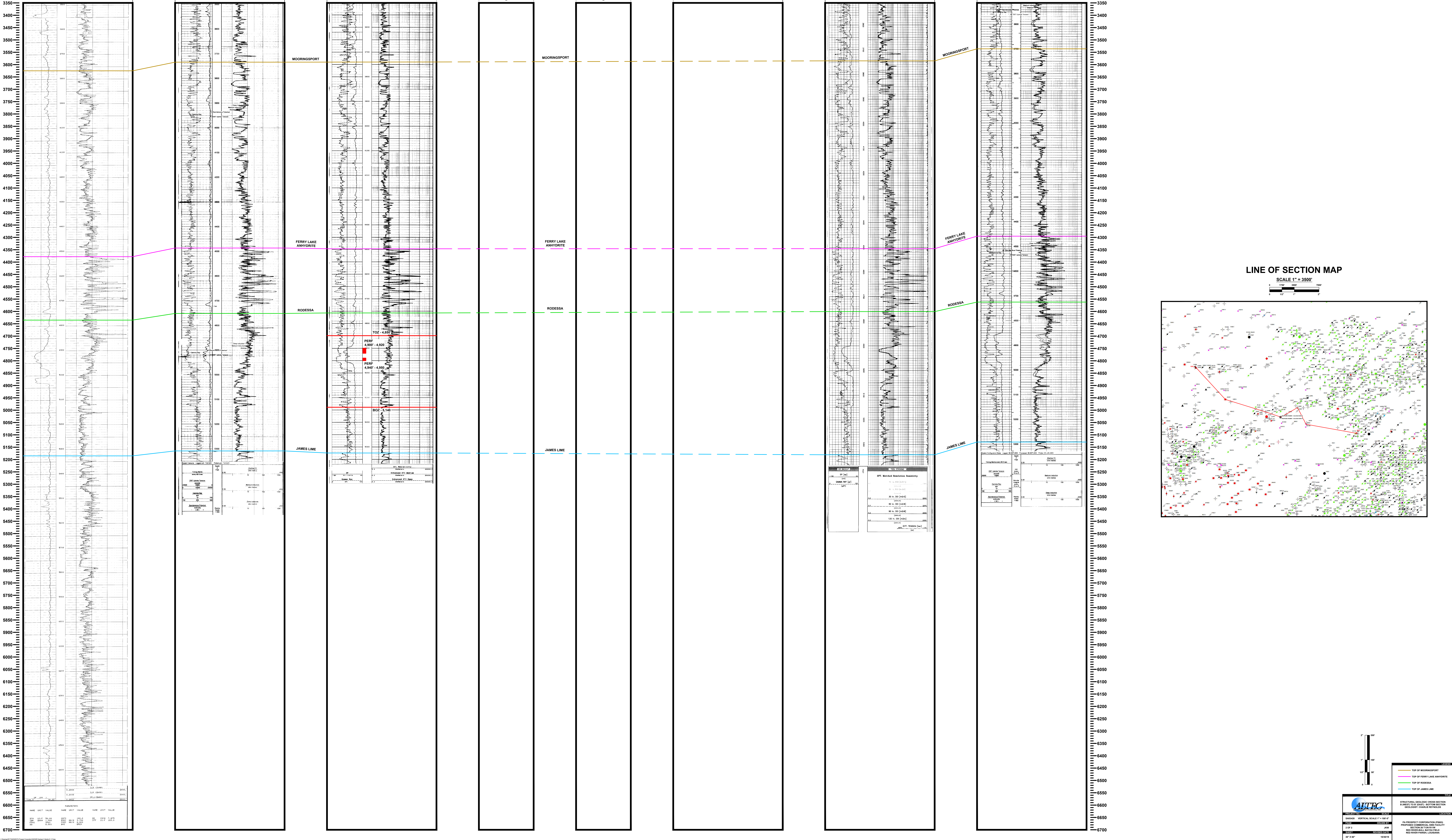
PA PROSPECT CORPORATION
PROPOSED REIMER-CALHOUN
SWD NO. 002

C.L. MORRIS
REIMER CALHOUN, NO. 001
SERIAL NO. 69269
KB ELEV. - 142' (APPROX.)

BHP BILLION PETRO
BRIARWOOD 35 H, NO. 001
SERIAL NO. 240054
KB ELEV. - 159.4'

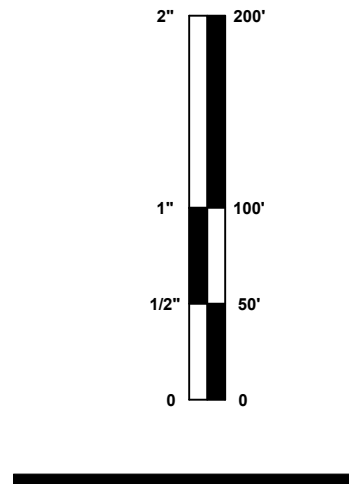
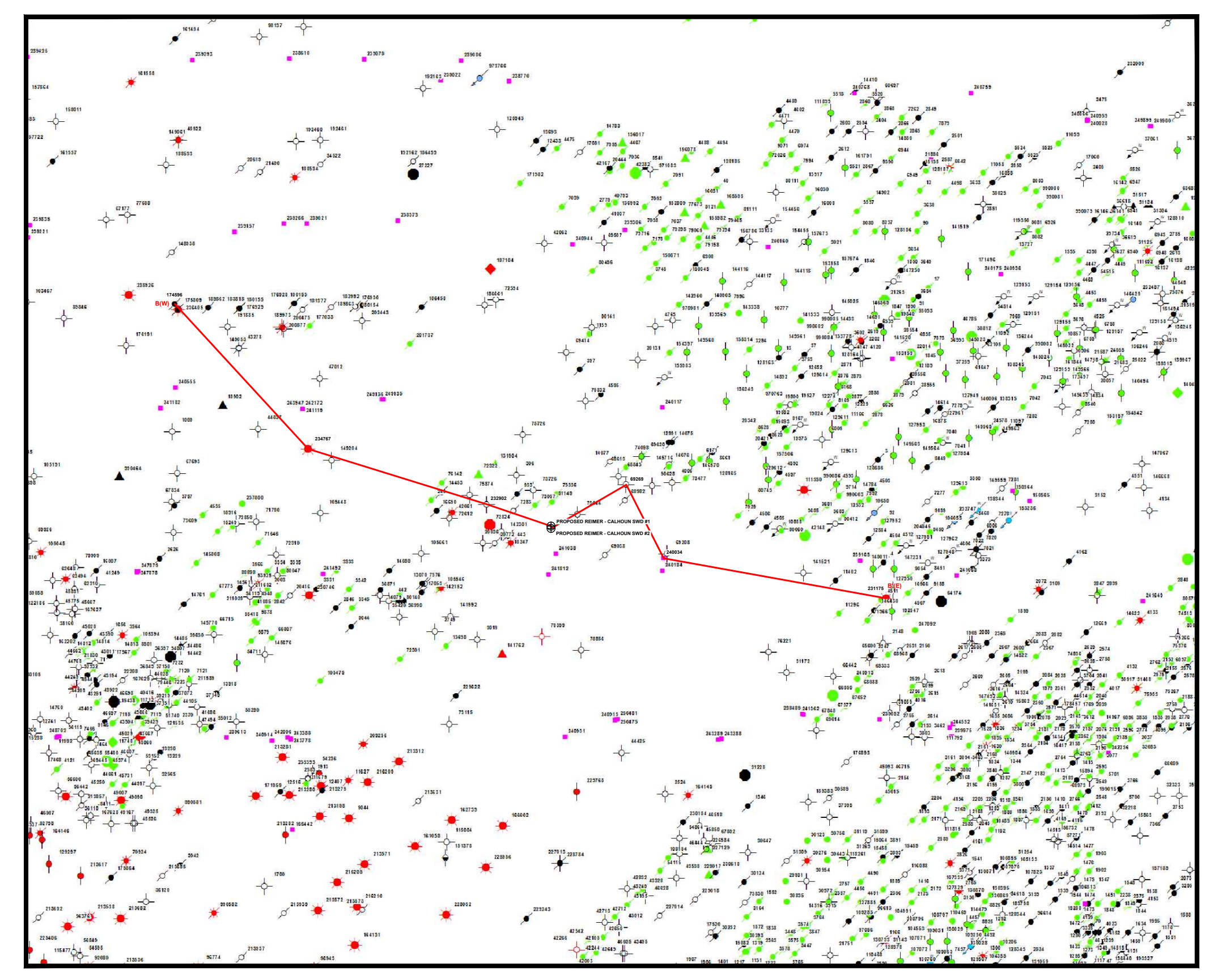
BSI OPERATING, LLC
ERH LIMITED ETAL, NO. 001
SERIAL NO. 211175
KB ELEV. - 163.0'

B' (E)



LINE OF SECTION MAP

SCALE 1" = 3500'



LEGEND

- TOP OF MOORINGSPORT
- TOP OF FERRY LAKE ANHYDRITE
- TOP OF RODESSA
- TOP OF JAMES LIME

ALTEC

PRODUCTION GEOLOGIC CROSS SECTION
BASED TO A PARTIAL SECTION
SECTION LINE FROM
GEOLOGIC CROSS SECTION

PA PROSPECT CORPORATION PASSES
PROPOSED OPERATIONAL SITES FACILITY
SECTION LINE FROM
HILL RIVER AREA, BAYTOWN
RED RIVER PARISH, LOUISIANA

DATE: 10/20/2011
JOB: 1000000000
SCALE: 1" = 3500'
SHEET: 2 OF 2
JOB: 1000000000