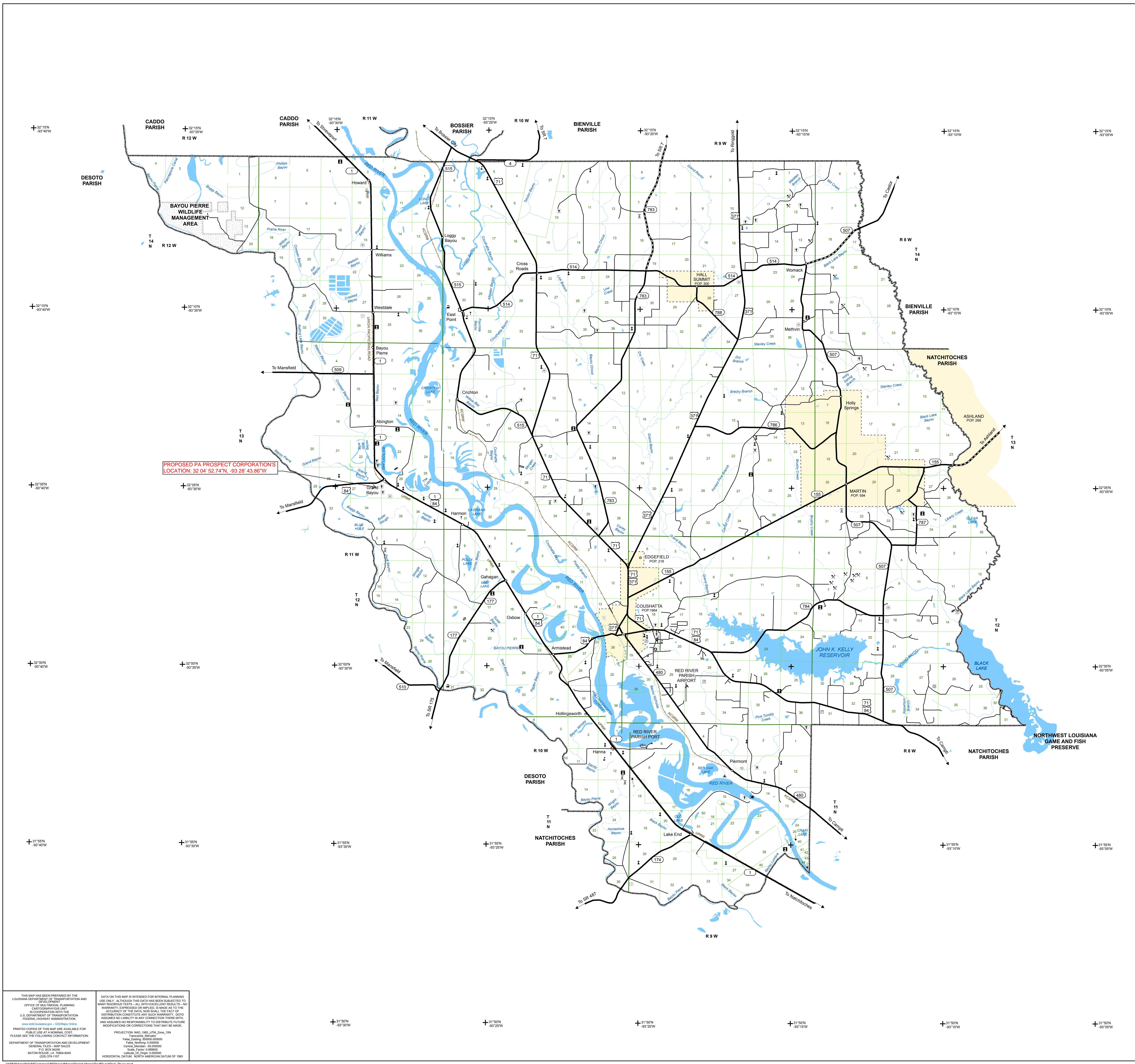


**APPENDIX I – PARISH MAP**

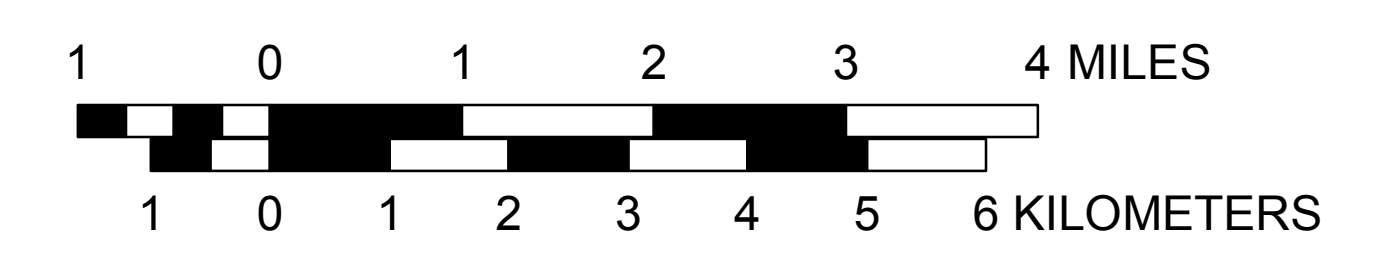
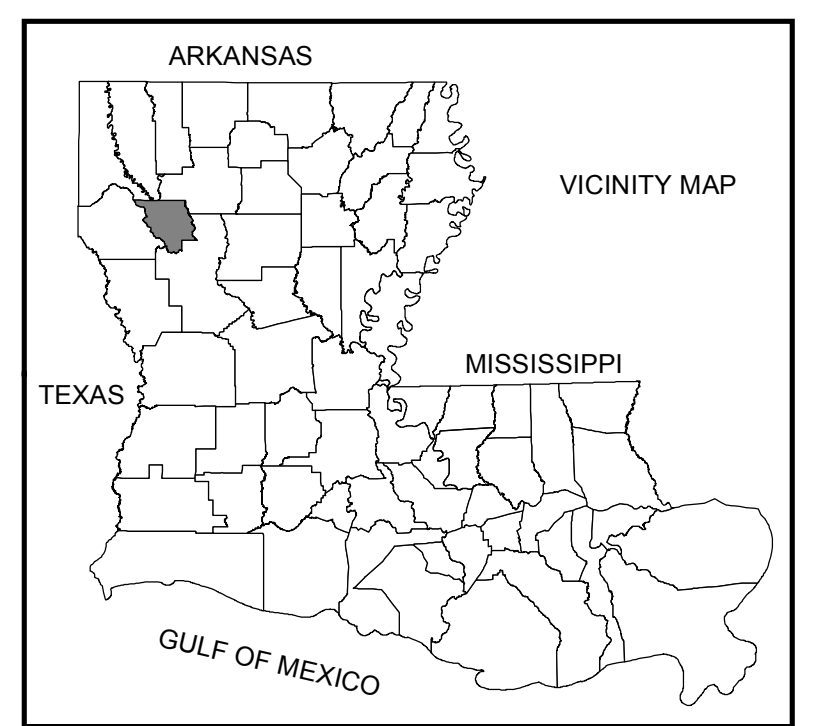
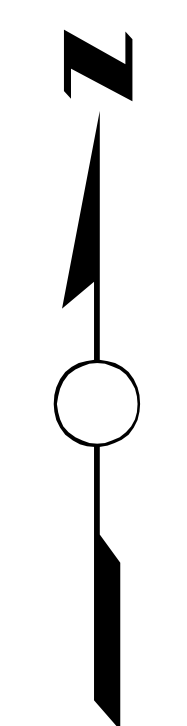
*Parish Map – proposed facility location identified (Section 519.C.9)*

A map showing the location of the proposed facility is on the drawing labeled "Parish Map".





- |   |
|---|
| <ul style="list-style-type: none"> <li> INTERSTATE HIGHWAY SYSTEM</li> <li> U.S. HIGHWAY SYSTEM</li> <li> STATE HIGHWAY SYSTEM</li> <li> DIVIDED HIGHWAY WITH CONTROL OF ACCESS</li> <li> DIVIDED HIGHWAY WITH FRONTAGE ROADS</li> <li> MULTI-LANE UNDIVIDED HIGHWAY</li> <li> MULTI-LANE DIVIDED HIGHWAY</li> <li> PAVED ROAD</li> <li> BITUMINOUS ROAD</li> <li> GRAVEL ROAD</li> <li> PUBLIC ROAD</li> <li> PROPOSED HIGHWAY</li> <li> HIGHWAY BRIDGE (MORE THAN 20' SPAN)</li> <li> HIGHWAY BRIDGES CLOSELY SPACED</li> <li> HIGHWAY DRAWBRIDGE</li> <li> HIGHWAY TUNNEL</li> <li> OVERHEAD STRUCTURE</li> <li> PUBLIC FERRY (FF - FREE, TF - TOLL)</li> <li> STATE BOUNDARY</li> <li> PARISH BOUNDARY</li> <li> INCORPORATED AREA BOUNDARY</li> <li> UNINCORPORATED AREA BOUNDARY</li> <li> TOWNSHIP RANGE LINE</li> <li> SECTION LINE</li> <li> MATCH LINE</li> <li> RAILROAD (HISTORICAL)</li> <li> RIVER, LAKE, RESERVOIR, OR POND</li> <li> INTERMITTENT STREAM</li> <li> STREAM</li> <li> CANAL</li> <li> HEAD OF NAVIGATION</li> <li> NAVY NAVIGABLE WATERWAY</li> <li> OPERATED SHIP AND BARGE LINES</li> <li> DAM ON WATERWAY</li> <li> LOCK ON WATERWAY</li> <li> LOCK AND DAM ON WATERWAY</li> <li> CONTROL STRUCTURE ON WATERWAY</li> <li> DOCK, PIER, OR LANDING ON WATERWAY</li> <li> LEVEE OR DIKE</li> <li> LEVEE OR DIKE WITH ROAD</li> <li> NATIONAL FOREST</li> <li> WILDLIFE AREAS</li> <li> CITY LIMITS</li> <li> STATE CAPITOL</li> <li> PARISH SEAT</li> <li> CITY, TOWN, VILLAGE, OR COMMUNITY</li> <li> AIRPORT - LIMITED FACILITY</li> <li> AIRPORT - MAJOR FACILITY</li> <li> AIRWAY LIGHT BEACON</li> <li> AMTRAK TERMINAL</li> <li> AMUSEMENT FACILITY</li> <li> ANIMAL SHELTER</li> <li> ANTEBELLUM HOME</li> <li> ARMORY OR NATIONAL GUARD UNIT</li> <li> ASTRONOMICAL OBSERVATORY</li> <li> AUTO SALVAGE YARD</li> <li> BALLFIELD</li> <li> BUS TERMINAL</li> <li> CAMP SPONSORED BY AN ORGANIZATION</li> <li> CEMETERY</li> <li> CHURCH AND SCHOOL</li> <li> CHURCH W/ CEMETERY ADJACENT</li> <li> COAST GUARD STATION</li> <li> COMMUNICATIONS TOWER</li> <li> COMMUNITY HALL</li> <li> CORRECTIONAL FACILITY</li> <li> COURT HOUSE</li> <li> DOT FACILITY - CONSTRUCTION UNIT</li> <li> DOT FACILITY - DISTRICT HEADQUARTERS</li> <li> DOT FACILITY - MAIN HEADQUARTERS</li> <li> DOT FACILITY - MAINTENANCE UNIT</li> <li> DOT FACILITY - PROJECT ENGINEER OFFICE</li> <li> DOT FACILITY - STORAGE SITE</li> <li> DOT FACILITY - SUB-DISTRICT HEADQUARTERS</li> <li> FAIRGROUND OR RACETRACK</li> <li> FERRY BOAT TERMINAL BUILDING</li> <li> FIRE STATION</li> <li> FISH HATCHERY</li> <li> GARBAGE DUMP</li> <li> GOLF COURSE</li> <li> GRAIN ELEVATOR</li> <li> GRAVEL, SAND, CLAY OR DIRT PIT</li> <li> GREAT RIVER ROAD DESIGNATION</li> <li> HELP PORT</li> <li> HOSPITAL</li> <li> INDUSTRIAL FACILITY</li> <li> LANDING STRIP</li> <li> LATITUDE/LONGITUDE</li> <li> LIGHTHOUSE</li> <li> LOCAL HISTORIC SITE</li> <li> MILITARY AIRFIELD</li> <li> MILITARY FACILITY</li> <li> MUNICIPAL BUILDING</li> <li> MUSEUM - NON-STATE OWNED</li> <li> MUSEUM - STATE OWNED</li> <li> NASA FACILITY</li> <li> NATIONAL PARK</li> <li> NATIONAL HISTORIC PARK AND PRESERVE</li> <li> NURSING HOME</li> <li> OBSERVATION TOWER</li> <li> PARISH HEALTH UNIT</li> <li> PARK</li> <li> POLICE STATION</li> <li> PUBLIC BOAT LAUNCH</li> <li> PUBLIC FERRY DOCK</li> <li> PUBLIC LIBRARY</li> <li> PUBLIC RECREATION AREA</li> <li> PUBLIC RECREATION AREA</li> <li> RAILROAD FREIGHT FACILITY</li> <li> RANGER STATION</li> <li> RESEARCH STATION</li> <li> INTERSTATE REST AREA</li> <li> RODEO FACILITY</li> <li> SCENIC SITE</li> <li> SCHOOL OR UNIVERSITY</li> <li> SCRAP YARD</li> <li> SEAPLANE FACILITY</li> <li> SEWAGE TREATMENT FACILITY</li> <li> STATE HISTORIC SITE</li> <li> STATE PARK</li> <li> STATE PRESERVATION AREA</li> <li> STATE WELCOME CENTER</li> <li> TOURIST INFORMATION CENTER</li> <li> WATER SUPPLY SYSTEM</li> <li> WAYSIDE PARK</li> <li> WEIGH STATION</li> </ul> |
|---|



THIS MAP HAS BEEN PREPARED BY THE LOUISIANA DEPARTMENT OF TRANSPORTATION AND DEVELOPMENT OFFICE OF MULTIMODAL PLANNING AND DEVELOPMENT IN COOPERATION WITH THE U.S. DEPARTMENT OF TRANSPORTATION FEDERAL HIGHWAY ADMINISTRATION.

PRODUCTION NO. 1985 LUTM 104 1/84  
 Baton Rouge, Louisiana  
 Date: October 1985  
 Scale: 1" = 10,000'  
 General: 1:100,000  
 Vertical: 1:50,000  
 Horizontal: 1:100,000

# RED RIVER PARISH

LOUISIANA  
 MAP UPDATED FEBRUARY 2012  
 CENSUS 2010 POPULATION 9,091

PREPARED BY THE  
 DEPARTMENT OF TRANSPORTATION AND DEVELOPMENT  
 OFFICE OF MULTIMODAL PLANNING

IN COOPERATION WITH THE  
 U.S. DEPARTMENT OF TRANSPORTATION  
 FEDERAL HIGHWAY ADMINISTRATION