

TRACT 42945 - St. Mary Parish, Louisiana

A portion of all lands located above the mean high water mark, together with lands now or formerly constituting the beds and bottoms of any water body of whatever description or nature belonging to the State of Louisiana which is now located within the boundaries of the Atchafalaya Delta Wildlife Management Area and not presently under mineral lease by the State of Louisiana on October 10, 2012, and more particularly located as follows: Beginning at a point within the Atchafalaya Delta Wildlife Management Area and on the South line of State Lease No. 18350, as amended, having Coordinates of X = 1,947,560.00 and Y = 298,654.00; thence East 3,440.00 feet along the South line of said State Lease No. 18350, as amended, to a point being its Southeast corner having Coordinates of X = 1,951,000.00 and Y = 298,654.00, said point also being the Southwest corner of State Lease No. 18351, as amended; thence East 290.00 feet along the South line of said State Lease No. 18351, as amended, to a point being its Southeast corner having Coordinates of X = 1,951,290.00 and Y = 298,654.00; thence East 2,109.01 feet to a point on the West line of State Lease No. 20871 having Coordinates of X = 1,953,399.01 and Y = 298,654.00; thence South 06 degrees 41 minutes 20 seconds West 2,813.15 feet along the West line of said State Lease No. 20871 to a point being its Southwest corner having Coordinates of X = 1,953,071.34 and Y = 295,860.00, said point also being the Northwest corner of State Lease No. 20875; thence South 06 degrees 41 minutes 20 seconds West 3,703.21 feet along the West line of said State Lease No. 20875, to a point being its Southwest corner having Coordinates of X = 1,952,640.00 and Y = 292,182.00; thence North 79 degrees 52 minutes 27 seconds East 4,170.97 feet along the South line of said State Lease No. 20875, to a point being its Southeast corner having Coordinates of X = 1,956,746.00 and Y = 292,915.31, said point also being the Southwest corner of State Lease No. 20873; thence North 79 degrees 52 minutes 27 seconds East 2,214.05 feet along the South line of said State Lease No. 20873, to a point having Coordinates of X = 1,958,925.56 and Y = 293,304.57; thence South 6,880.91 feet to a point having Coordinates of X = 1,958,925.56 and Y = 286,423.66; thence West 11,365.56 feet to a point having Coordinates of X = 1,947,560.00 and Y = 286,423.66; thence North 12,230.34 feet to the being the point of beginning, containing approximately **2,394.60 acres**, all as more particularly outlined on a plat on file in the Office of Mineral Resources, Department of Natural Resources. All bearings, distances and coordinates are based on Louisiana Coordinate System of 1927, (South Zone).

NOTE: The above description of the Tract nominated for lease has been provided and corrected, where required, exclusively by the nomination party. Any mineral lease selected from this Tract and awarded by the Louisiana State Mineral and Energy Board shall be without warranty of any kind, either express, implied, or statutory, including, but not limited to, the implied warranties of merchantability and fitness for a particular purpose. Should the mineral lease awarded by the Louisiana State Mineral and Energy Board be subsequently modified, cancelled or abrogated due to the existence of conflicting leases, operating agreements, private claims or other future obligations or conditions which may affect all or any

portion of the leased Tract, it shall not relieve the Lessee of the obligation to pay any bonus due thereon to the Louisiana State Mineral and Energy Board, nor shall the Louisiana State Mineral and Energy Board be obligated to refund any consideration paid by the Lessor prior to such modification, cancellation, or abrogation, including, but not limited to, bonuses, rentals and royalties.

NOTE: The mineral lease is located in the Atchafalaya Delta WMA under the jurisdiction of the Louisiana Department of Wildlife and Fisheries which has promulgated rules and regulations for the protection of game and wildlife on the aforesaid Tract and, therefore, shall be subject to said rules and regulations, a copy of which shall be attached to the mineral leases. In addition to the specific rules and regulations applicable, the following shall apply regarding operations under this mineral lease:

- No activities will be allowed without written authorization of the Louisiana Department of Wildlife and Fisheries.
- Proposed projects will be evaluated on a case by case basis. Modifications to proposed project features including but not limited to access routes, spoil placement, well sites, flowlines and appurtenant structures may be required by the Department of Wildlife and Fisheries.
- Compliance with the Atchafalaya Delta WMA regulations will be required unless otherwise specified by the Department of Wildlife and Fisheries.
- Compensatory mitigation will be required to offset unavoidable wetland impacts.
- Compensation and/or oyster seed ground surveys may be required by the Department for potential impacts to productive oyster seed grounds located within the management area.
- Removal of all structures, facilities and equipment will be required within 120 days of abandonment unless otherwise agreed to in writing by the Louisiana Department of Wildlife and Fisheries.
- No activities will be allowed during the hunting season unless approved by the Department.
- This tract is located within the emerging Atchafalaya Delta. No activities will be allowed on emergent islands, sub aerial mudflats or vegetated wetlands. Drilling will be restricted to passes and open water bays. The Louisiana Department of Wildlife and Fisheries (LDWF) shall have discretion to determine access routes. In the event that LDWF approves of dredging for access, LDWF shall have discretion to require hydraulic or spray dredging to reduce environmental impacts.
- Prior to submitting application for wetland permits to Federal and State permitting agencies the leaseholder shall coordinate project details with the Department of Wildlife and Fisheries. Contact person for the Department will be Mike Windham at (504)284-5268.

Additionally, the Department will require a minimum bonus of \$350.00 per acre and a minimum royalty of 25%.

NOTE: The above described tract may be in the vicinity of existing shell reefs where drilling and dredging operations must be conducted in strict conformity with the regulations adopted by the Louisiana Department of Wildlife and Fisheries and/or the U.S. Corps of Engineers, U.S. Army.

NOTE: The State of Louisiana does hereby reserve, and this lease shall be subject to, the imprescriptible right of surface use in the nature of a servitude in favor of the Department of Natural Resources, including its Offices and Commissions, for the sole purpose of implementing, constructing, servicing and maintaining approved coastal zone management and/or restoration projects. Utilization of any and all rights derived under this lease by the mineral lessee, its agents, successors or assigns, shall not interfere with nor hinder the reasonable surface use by the Department of Natural Resources, its Offices or Commissions, as herein above reserved.

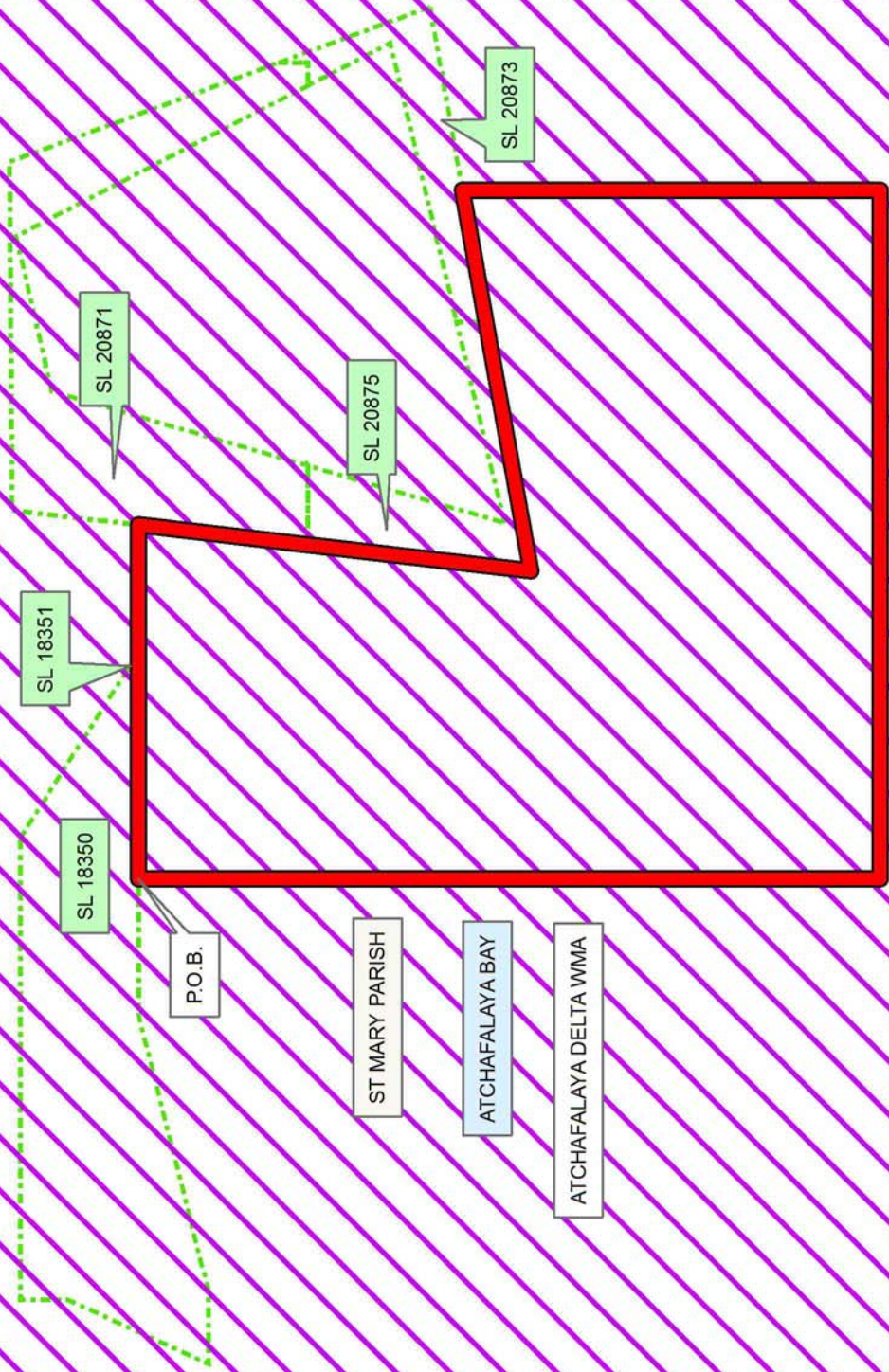
NOTE: This tract is located in an area designated by the Louisiana Legislature or the Wildlife and Fisheries Commission as a Public Oyster Seed Ground, Reservation, or area of Calcasieu or Sabine Lake. Proposed projects occurring in these areas will be evaluated on a case by case basis by Louisiana Department of Wildlife & Fisheries. Modifications to proposed project features including, but not limited to, access routes, well sites, flowlines, and appurtenant structures maybe required by the Louisiana Department of Wildlife and Fisheries. In addition, compensatory mitigation will be required to offset unavoidable habitat impacts.

Applicant: D. J. WATKINS

| Bidder | Cash Payment | Price/Acre | Rental | Oil | Gas | Other |
|--------|--------------|------------|--------|-----|-----|-------|
| | | | | | | |
| | | | | | | |
| | | | | | | |
| | | | | | | |

Legend

- 12100005
- Wildlife
- Active_Leases



TRACT 42946 - St. Mary Parish, Louisiana

A portion of all lands located above the mean high water mark, together with lands now or formerly constituting the beds and bottoms of any water body of whatever description or nature belonging to the State of Louisiana which is now located within the boundaries of the Atchafalaya Delta Wildlife Management Area and not presently under mineral lease by the State of Louisiana on October 10, 2012, and more particularly located as follows: Beginning at a point within the Atchafalaya Delta Wildlife Management Area being a point on the East boundary of State Lease No. 340, as amended, having Coordinates of X = 1,937,310.78 and Y = 292,907.14; thence East 10,249.22 feet to a point having Coordinates of X = 1,947,560.00 and Y = 292,907.14; thence South 6,360.14 feet to a point having Coordinates of X = 1,947,560.00 and Y = 286,547.00; thence West 798.00 feet to a point having Coordinates of X = 1,946,762.00 and Y = 286,547.00; thence South 1,417.15 feet to a point having Coordinates of X = 1,946,762.00 and Y = 285,129.85; thence West 13,514.00 feet to a point on the East boundary of said State Lease No. 340 having Coordinates of X = 1,933,248.00 and Y = 285,129.85; thence along the boundary of said State Lease No. 340 the following: North 5,418.15 feet to a point having Coordinates of X = 1,933,248.00 and Y = 290,548.00, East 4,057.29 feet to a point having Coordinates of X = 1,937,305.29 and Y = 290,548.00 and North 00 degrees 08 minutes 00 seconds East 2,359.15 feet to the point of beginning, **LESS AND EXCEPT** that portion, if any, of State Lease No. 340, as amended, which may lie within the above described tract, and, **LESS AND EXCEPT** any and all portions of the above described property that may fall outside Atchafalaya Delta Wildlife Management Area, containing approximately **2,309.45 acres**, all as more particularly outlined on a plat on file in the Office of Mineral Resources, Department of Natural Resources. All bearings, distances and coordinates are based on Louisiana Coordinate System of 1927, (South Zone).

NOTE: The above description of the Tract nominated for lease has been provided and corrected, where required, exclusively by the nomination party. Any mineral lease selected from this Tract and awarded by the Louisiana State Mineral and Energy Board shall be without warranty of any kind, either express, implied, or statutory, including, but not limited to, the implied warranties of merchantability and fitness for a particular purpose. Should the mineral lease awarded by the Louisiana State Mineral and Energy Board be subsequently modified, cancelled or abrogated due to the existence of conflicting leases, operating agreements, private claims or other future obligations or conditions which may affect all or any portion of the leased Tract, it shall not relieve the Lessee of the obligation to pay any bonus due thereon to the Louisiana State Mineral and Energy Board, nor shall the Louisiana State Mineral and Energy Board be obligated to refund any consideration paid by the Lessor prior to such modification, cancellation, or abrogation, including, but not limited to, bonuses, rentals and royalties.

NOTE: The mineral lease is located in the Atchafalaya Delta WMA under the jurisdiction of the Louisiana Department of Wildlife and Fisheries which has promulgated rules and regulations for the protection of game and wildlife on the aforesaid Tract and, therefore, shall be subject to said rules and regulations, a copy of which shall be attached to the mineral leases. In addition to the specific rules and regulations applicable, the following shall apply regarding operations under this mineral lease:

- No activities will be allowed without written authorization of the Louisiana Department of Wildlife and Fisheries.
- Proposed projects will be evaluated on a case by case basis. Modifications to proposed project features including but not limited to access routes, spoil placement, well sites, flowlines and appurtenant structures may be required by the Department of Wildlife and Fisheries.
- Compliance with the Atchafalaya Delta WMA regulations will be required unless otherwise specified by the Department of Wildlife and Fisheries.
- Compensatory mitigation will be required to offset unavoidable wetland impacts.
- Compensation and/or oyster seed ground surveys may be required by the Department for potential impacts to productive oyster seed grounds located within the management area.
- Removal of all structures, facilities and equipment will be required within 120 days of abandonment unless otherwise agreed to in writing by the Louisiana Department of Wildlife and Fisheries.
- No activities will be allowed during the hunting season unless approved by the Department.
- This tract is located within the emerging Atchafalaya Delta. No activities will be allowed on emergent islands, sub aerial mudflats or vegetated wetlands. Drilling will be restricted to passes and open water bays. The Louisiana Department of Wildlife and Fisheries (LDWF) shall have discretion to determine access routes. In the event that LDWF approves of dredging for access, LDWF shall have discretion to require hydraulic or spray dredging to reduce environmental impacts.
- Prior to submitting application for wetland permits to Federal and State permitting agencies the leaseholder shall coordinate project details with the Department of Wildlife and Fisheries. Contact person for the Department will be Mike Windham at (504)284-5268.

Additionally, the Department will require a minimum bonus of \$350.00 per acre and a minimum royalty of 25%.

NOTE: The acreage contained herein, being a portion of State Lease 335, 340 or 341, was subject to the litigation between Texaco, Inc. and the State of Louisiana which resulted in the Global Settlement Agreement

compromise whereby this acreage was reassigned through various mesne conveyances to the successors of William T. Burton, the original lessee of said leases from the State, (hereinafter otherwise referred to as the "ORRO's) and approved by the State Mineral and Energy Board, becoming effective April 25, 1994. Under separate agreement by and between the State and the ORRO's, certain obligations were to be met within a specified time frame or the ORRO's became obligated to release the reassigned acreage back to the State. The obligations were not met within the specified time frame and the State began securing the releases for the acreage contained herein. Due to the extremely large number of ORRO's, their nationwide and worldwide dispersal, the unreliability of available contact information and/or a present inability to obtain full, requisite cooperation, the State has, as yet, not secured releases from certain ORRO's representing approximately a .0258336 interest in this acreage. Accordingly, although the State is diligently pursuing the requisite releases affecting this acreage (the furnishing of which the ORRO's representing the stated decimal interest are obligated), nevertheless, a party obtaining a mineral lease from the State of Louisiana on the acreage contained herein shall do so with full knowledge that a complete release of all specific ORRO interest in this acreage has not as yet been secured and shall assume a business risk commensurate with the unsecured interest release.

NOTE: The above described tract may be in the vicinity of existing shell reefs where drilling and dredging operations must be conducted in strict conformity with the regulations adopted by the Louisiana Department of Wildlife and Fisheries and/or the U.S. Corps of Engineers, U.S. Army.

NOTE: The State of Louisiana does hereby reserve, and this lease shall be subject to, the imprescriptible right of surface use in the nature of a servitude in favor of the Department of Natural Resources, including its Offices and Commissions, for the sole purpose of implementing, constructing, servicing and maintaining approved coastal zone management and/or restoration projects. Utilization of any and all rights derived under this lease by the mineral lessee, its agents, successors or assigns, shall not interfere with nor hinder the reasonable surface use by the Department of Natural Resources, its Offices or Commissions, as herein above reserved.

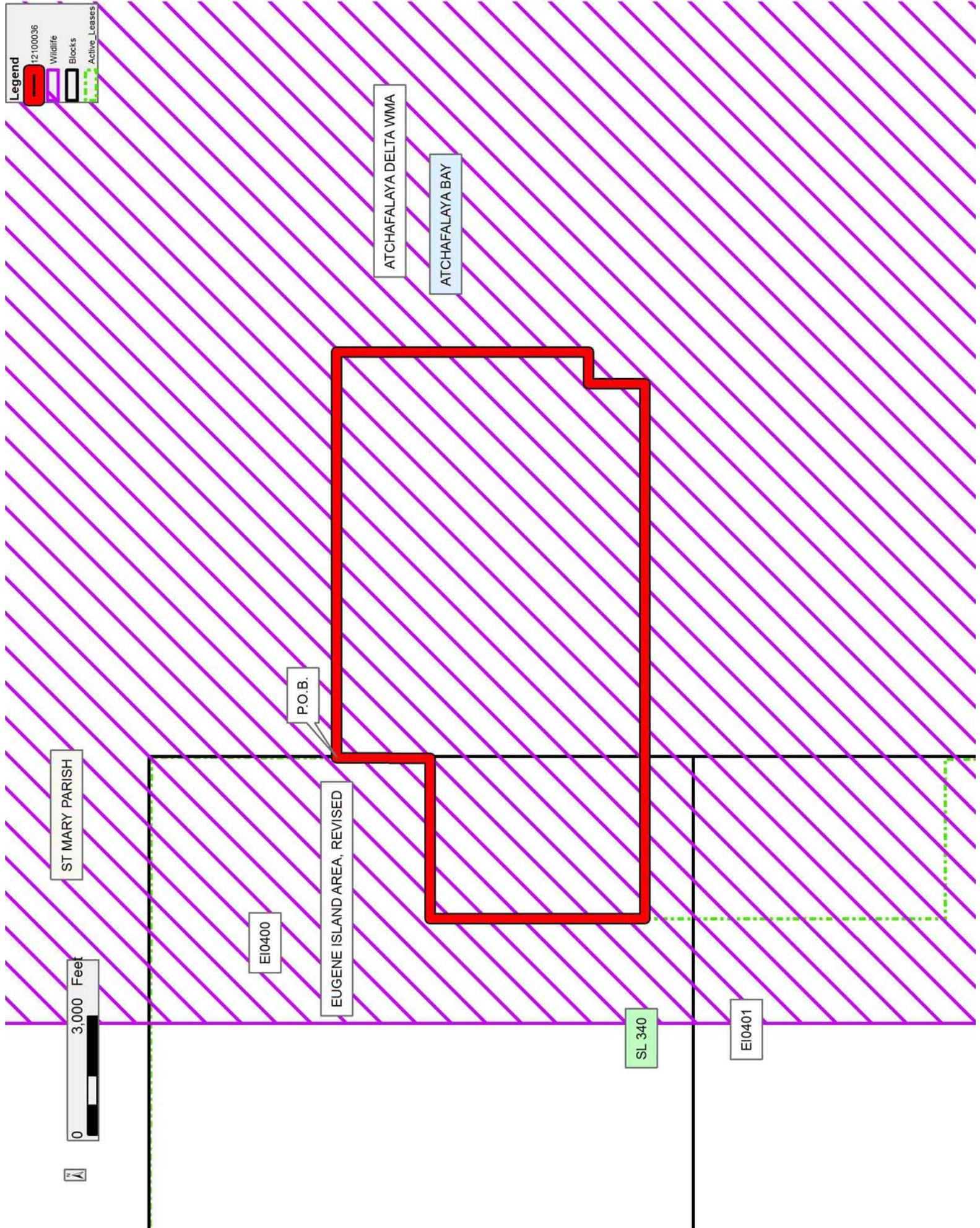
NOTE: This tract is located in an area designated by the Louisiana Legislature or the Wildlife and Fisheries Commission as a Public Oyster Seed Ground, Reservation, or area of Calcasieu or Sabine Lake. Proposed projects occurring in these areas will be evaluated on a case by case basis by Louisiana Department of Wildlife & Fisheries. Modifications to proposed project features including, but not limited to, access routes, well sites, flowlines, and appurtenant structures maybe required by the Louisiana Department of Wildlife and Fisheries. In addition, compensatory mitigation will be required to offset unavoidable habitat impacts.

Applicant: LESLIE M. COOPER

| Bidder | Cash Payment | Price/ Acre | Rental | Oil | Gas | Other |
|--------|-----------------|----------------|--------|-----|-----|-------|
| | | | | | | |
| | | | | | | |
| | | | | | | |
| | | | | | | |

Legend

- 12100036
- Wildlife
- Blocks
- Active Leases



TRACT 42947 - St. Mary Parish, Louisiana

A portion of all lands located above the mean high water mark, together with lands now or formerly constituting the beds and bottoms of any water body of whatever description or nature belonging to the State of Louisiana which is now located within the boundaries of the Atchafalaya Delta Wildlife Management Area and not presently under mineral lease by the State of Louisiana on October 10, 2012, and more particularly located as follows: Beginning at a point within the Atchafalaya Delta Wildlife Management Area being a point on the South boundary of State Lease No. 20523 having Coordinates of X = 1,970,550.00 and Y = 288,005.47; thence along the boundaries of said State Lease No. 20523 the following courses: North 73 degrees 29 minutes 53 seconds East 1,434.79 feet to a point having Coordinates of X = 1,971,925.69 and Y = 288,413.02, North 61 degrees 14 minutes 48 seconds East 5,170.02 feet to a point having Coordinates of X = 1,976,458.24 and Y = 290,900.00 and North 31 degrees 01 minutes 56 seconds East 589.23 feet to a point having Coordinates of X = 1,976,762.00 and Y = 291,404.90; thence South 5,648.90 feet to the Northeast corner of State Lease No. 20687 having Coordinates of X = 1,976,762.00 and Y = 285,756.00; thence along the boundaries of said State Lease No. 20687 the following courses: West 2,971.00 feet to a point having Coordinates of X = 1,973,791.00 and Y = 285,756.00 and South 4,003.00 feet to its Southwest corner and a point on the North boundary of State Lease No. 20688 having Coordinates of X = 1,973,791.00 and Y = 281,753.00; thence along the boundaries of said State Lease No. 20688 the following courses: West 1,540.00 feet to a point having Coordinates of X = 1,972,251.00 and Y = 281,753.00, South 2,452.00 feet to a point having Coordinates of X = 1,972,251.00 and Y = 279,301.00 and East 4,511.00 feet to a point having Coordinates of X = 1,976,762.00 and Y = 279,301.00; thence South 2,101.00 feet to a point having Coordinates of X = 1,976,762.00 and Y = 277,200.00; thence West 11,236.27 feet to a point on the East boundary of State Lease No. 20527 having Coordinates of X = 1,965,525.73 and Y = 277,200.00; thence North 47 degrees 13 minutes 37 seconds East 1,684.17 feet along the East boundary of said State Lease No. 20527 to its Southeast corner and the Southwest corner of State Lease No. 20526 having Coordinates of X = 1,966,762.00 and Y = 278,343.72; thence North 47 degrees 13 minutes 37 seconds East 5,309.65 feet to a point having Coordinates of X = 1,970,659.54 and Y = 281,949.48 and North 47 degrees 18 minutes 53 seconds West 149.02 feet to a point having Coordinates of X = 1,970,550.00 and Y = 282,050.51; thence North 5,954.97 feet to the point of beginning, containing approximately **1,481.98 acres**, all as more particularly outlined on a plat on file in the Office of Mineral Resources, Department of Natural Resources. All bearings, distances and coordinates are based on Louisiana Coordinate System of 1927, (South Zone).

NOTE: The above description of the Tract nominated for lease has been provided and corrected, where required, exclusively by the nomination party. Any mineral lease selected from this Tract and awarded by the Louisiana State Mineral and Energy Board shall be without warranty of any

kind, either express, implied, or statutory, including, but not limited to, the implied warranties of merchantability and fitness for a particular purpose. Should the mineral lease awarded by the Louisiana State Mineral and Energy Board be subsequently modified, cancelled or abrogated due to the existence of conflicting leases, operating agreements, private claims or other future obligations or conditions which may affect all or any portion of the leased Tract, it shall not relieve the Lessee of the obligation to pay any bonus due thereon to the Louisiana State Mineral and Energy Board, nor shall the Louisiana State Mineral and Energy Board be obligated to refund any consideration paid by the Lessor prior to such modification, cancellation, or abrogation, including, but not limited to, bonuses, rentals and royalties.

NOTE: The mineral lease is located in the Atchafalaya Delta WMA under the jurisdiction of the Louisiana Department of Wildlife and Fisheries which has promulgated rules and regulations for the protection of game and wildlife on the aforesaid Tract and, therefore, shall be subject to said rules and regulations, a copy of which shall be attached to the mineral leases. In addition to the specific rules and regulations applicable, the following shall apply regarding operations under this mineral lease:

- No activities will be allowed without written authorization of the Louisiana Department of Wildlife and Fisheries.
- Proposed projects will be evaluated on a case by case basis. Modifications to proposed project features including but not limited to access routes, spoil placement, well sites, flowlines and appurtenant structures may be required by the Department of Wildlife and Fisheries.
- Compliance with the Atchafalaya Delta WMA regulations will be required unless otherwise specified by the Department of Wildlife and Fisheries.
- Compensatory mitigation will be required to offset unavoidable wetland impacts.
- Compensation and/or oyster seed ground surveys may be required by the Department for potential impacts to productive oyster seed grounds located within the management area.
- Removal of all structures, facilities and equipment will be required within 120 days of abandonment unless otherwise agreed to in writing by the Louisiana Department of Wildlife and Fisheries.
- No activities will be allowed during the hunting season unless approved by the Department.
- This tract is located within the emerging Atchafalaya Delta. No activities will be allowed on emergent islands, sub aerial mudflats or vegetated wetlands. Drilling will be restricted to passes and open water bays. The Louisiana Department of Wildlife and Fisheries (LDWF) shall have discretion to determine access routes. In the event that LDWF approves of dredging for access, LDWF shall have discretion to require hydraulic or spray dredging to reduce environmental impacts.

- Prior to submitting application for wetland permits to Federal and State permitting agencies the leaseholder shall coordinate project details with the Department of Wildlife and Fisheries. Contact person for the Department will be Mike Windham at (504)284-5268.

Additionally, the Department will require a minimum bonus of \$350.00 per acre and a minimum royalty of 25%.

NOTE: The above described tract may be in the vicinity of existing shell reefs where drilling and dredging operations must be conducted in strict conformity with the regulations adopted by the Louisiana Department of Wildlife and Fisheries and/or the U.S. Corps of Engineers, U.S. Army.

NOTE: The State of Louisiana does hereby reserve, and this lease shall be subject to, the imprescriptible right of surface use in the nature of a servitude in favor of the Department of Natural Resources, including its Offices and Commissions, for the sole purpose of implementing, constructing, servicing and maintaining approved coastal zone management and/or restoration projects. Utilization of any and all rights derived under this lease by the mineral lessee, its agents, successors or assigns, shall not interfere with nor hinder the reasonable surface use by the Department of Natural Resources, its Offices or Commissions, as herein above reserved.

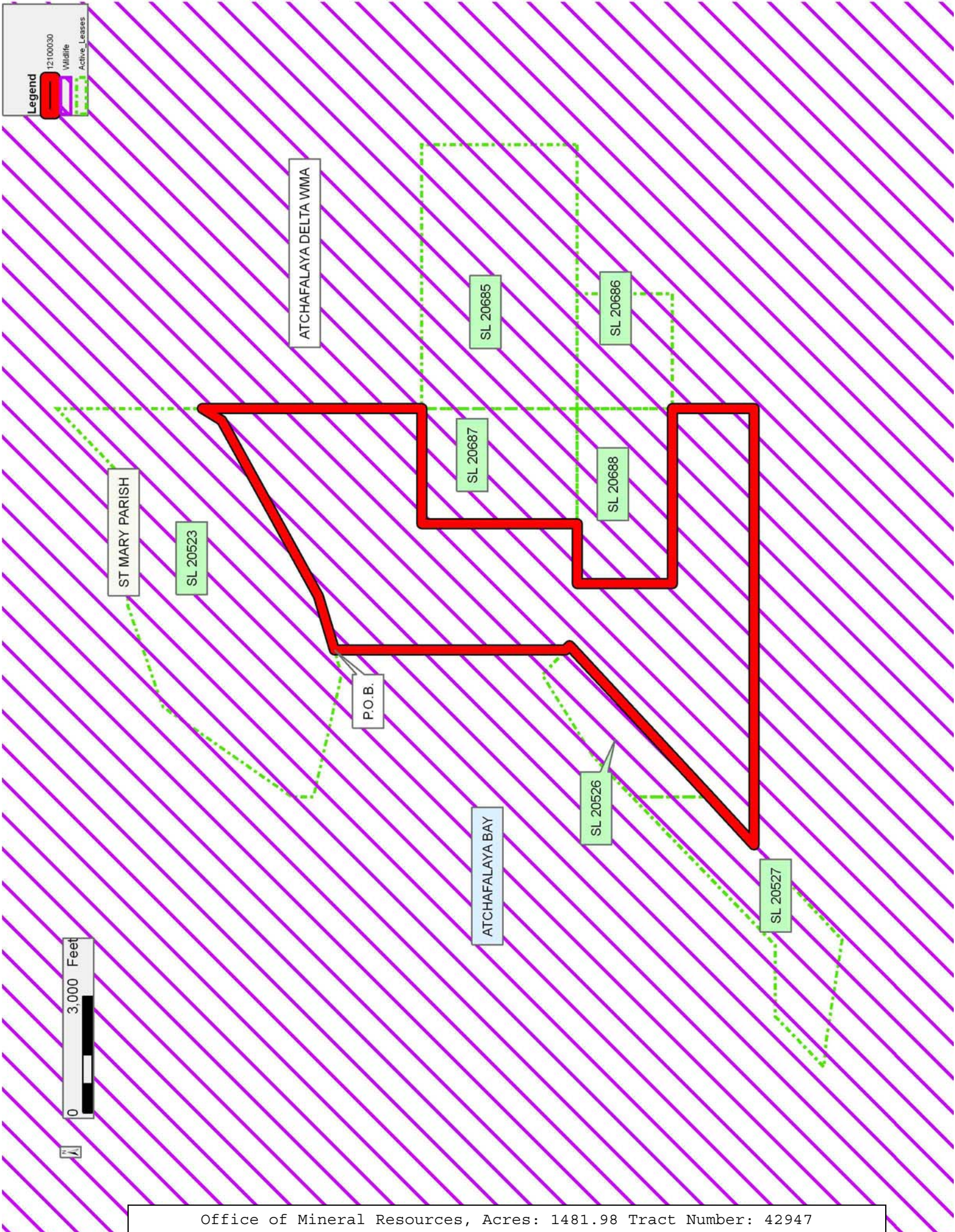
NOTE: This tract is located in an area designated by the Louisiana Legislature or the Wildlife and Fisheries Commission as a Public Oyster Seed Ground, Reservation, or area of Calcasieu or Sabine Lake. Proposed projects occurring in these areas will be evaluated on a case by case basis by Louisiana Department of Wildlife & Fisheries. Modifications to proposed project features including, but not limited to, access routes, well sites, flowlines, and appurtenant structures maybe required by the Louisiana Department of Wildlife and Fisheries. In addition, compensatory mitigation will be required to offset unavoidable habitat impacts.

Applicant: LESLIE M. COOPER

| Bidder | Cash Payment | Price/Acre | Rental | Oil | Gas | Other |
|--------|--------------|------------|--------|-----|-----|-------|
| | | | | | | |
| | | | | | | |
| | | | | | | |
| | | | | | | |

Legend

12100030
Wildlife
Active Leases



TRACT 42948 - St. Mary Parish, Louisiana

A portion of all lands located above the mean high water mark, together with lands now or formerly constituting the beds and bottoms of any water body of whatever description or nature belonging to the State of Louisiana which is now located within the boundaries of the Atchafalaya Delta Wildlife Management Area and not presently under mineral lease by the State of Louisiana on October 10, 2012, and more particularly located as follows: Beginning at a point within the Atchafalaya Delta Wildlife Management Area having Coordinates of X = 1,958,925.56 and Y = 287,816.66; thence East 10,987.11 feet to a point being the Southernmost tip of State Lease No. 20523 having Coordinates of X = 1,969,912.67 and Y = 287,816.66; thence North 73 degrees 29 minutes 53 seconds East 664.71 feet along the Southern boundary of said State Lease No. 20523 to a point having Coordinates of X = 1,970,550.00 and Y = 288,005.47; thence South 5,954.97 feet to a point on the Northern boundary of State Lease No. 20526 having Coordinates of X = 1,970,550.00 and Y = 282,050.51; thence North 47 degrees 18 minutes 53 seconds West 884.25 feet to its North corner also being a Southeast corner of State Lease No. 20219 having Coordinates of X = 1,969,900.00 and Y = 282,650.00; thence along the Northern boundary of said State Lease No. 20219 the following courses: North 26 degrees 33 minutes 54 seconds West 1,341.64 feet to a point having Coordinates of X = 1,969,300.00 and Y = 283,850.00; North 72 degrees 36 minutes 09 seconds West 1,571.91 feet to a point having Coordinates of X = 1,967,800.00 and Y = 284,320.00; thence West 3,800.00 feet to a corner having Coordinates of X = 1,964,000.00 and Y = 284,320.00; thence North 2,227.00 feet to a point having Coordinates of X = 1,964,000.00 and Y = 286,547.00; thence West 5,074.44 feet to a point having Coordinates of X = 1,958,925.56 and Y = 286,547.00; thence North 1,269.66 feet to the point of beginning, containing approximately **727.30 acres**, all as more particularly outlined on a plat on file in the Office of Mineral Resources, Department of Natural Resources. All bearings, distances and coordinates are based on Louisiana Coordinate System of 1927, (South Zone).

NOTE: The above description of the Tract nominated for lease has been provided and corrected, where required, exclusively by the nomination party. Any mineral lease selected from this Tract and awarded by the Louisiana State Mineral and Energy Board shall be without warranty of any kind, either express, implied, or statutory, including, but not limited to, the implied warranties of merchantability and fitness for a particular purpose. Should the mineral lease awarded by the Louisiana State Mineral and Energy Board be subsequently modified, cancelled or abrogated due to the existence of conflicting leases, operating agreements, private claims or other future obligations or conditions which may affect all or any portion of the leased Tract, it shall not relieve the Lessee of the obligation to pay any bonus due thereon to the Louisiana State Mineral and Energy Board, nor shall the Louisiana State Mineral and Energy Board be obligated to refund any consideration paid by the Lessor prior to such modification, cancellation, or abrogation, including, but not limited to, bonuses, rentals and royalties.

NOTE: The mineral lease is located in the Atchafalaya Delta WMA under the jurisdiction of the Louisiana Department of Wildlife and Fisheries which has promulgated rules and regulations for the protection of game and wildlife on the aforesaid Tract and, therefore, shall be subject to said rules and regulations, a copy of which shall be attached to the mineral leases. In addition to the specific rules and regulations applicable, the following shall apply regarding operations under this mineral lease:

- No activities will be allowed without written authorization of the Louisiana Department of Wildlife and Fisheries.
- Proposed projects will be evaluated on a case by case basis. Modifications to proposed project features including but not limited to access routes, spoil placement, well sites, flowlines and appurtenant structures may be required by the Department of Wildlife and Fisheries.
- Compliance with the Atchafalaya Delta WMA regulations will be required unless otherwise specified by the Department of Wildlife and Fisheries.
- Compensatory mitigation will be required to offset unavoidable wetland impacts.
- Compensation and/or oyster seed ground surveys may be required by the Department for potential impacts to productive oyster seed grounds located within the management area.
- Removal of all structures, facilities and equipment will be required within 120 days of abandonment unless otherwise agreed to in writing by the Louisiana Department of Wildlife and Fisheries.
- No activities will be allowed during the hunting season unless approved by the Department.
- This tract is located within the emerging Atchafalaya Delta. No activities will be allowed on emergent islands, sub aerial mudflats or vegetated wetlands. Drilling will be restricted to passes and open water bays. The Louisiana Department of Wildlife and Fisheries (LDWF) shall have discretion to determine access routes. In the event that LDWF approves of dredging for access, LDWF shall have discretion to require hydraulic or spray dredging to reduce environmental impacts.
- Prior to submitting application for wetland permits to Federal and State permitting agencies the leaseholder shall coordinate project details with the Department of Wildlife and Fisheries. Contact person for the Department will be Mike Windham at (504)284-5268.

Additionally, the Department will require a minimum bonus of \$350.00 per acre and a minimum royalty of 25%.

NOTE: The State of Louisiana does hereby reserve, and this lease shall be subject to, the imprescriptible right of surface use in the nature of a

servitude in favor of the Department of Natural Resources, including its Offices and Commissions, for the sole purpose of implementing, constructing, servicing and maintaining approved coastal zone management and/or restoration projects. Utilization of any and all rights derived under this lease by the mineral lessee, its agents, successors or assigns, shall not interfere with nor hinder the reasonable surface use by the Department of Natural Resources, its Offices or Commissions, as herein above reserved.

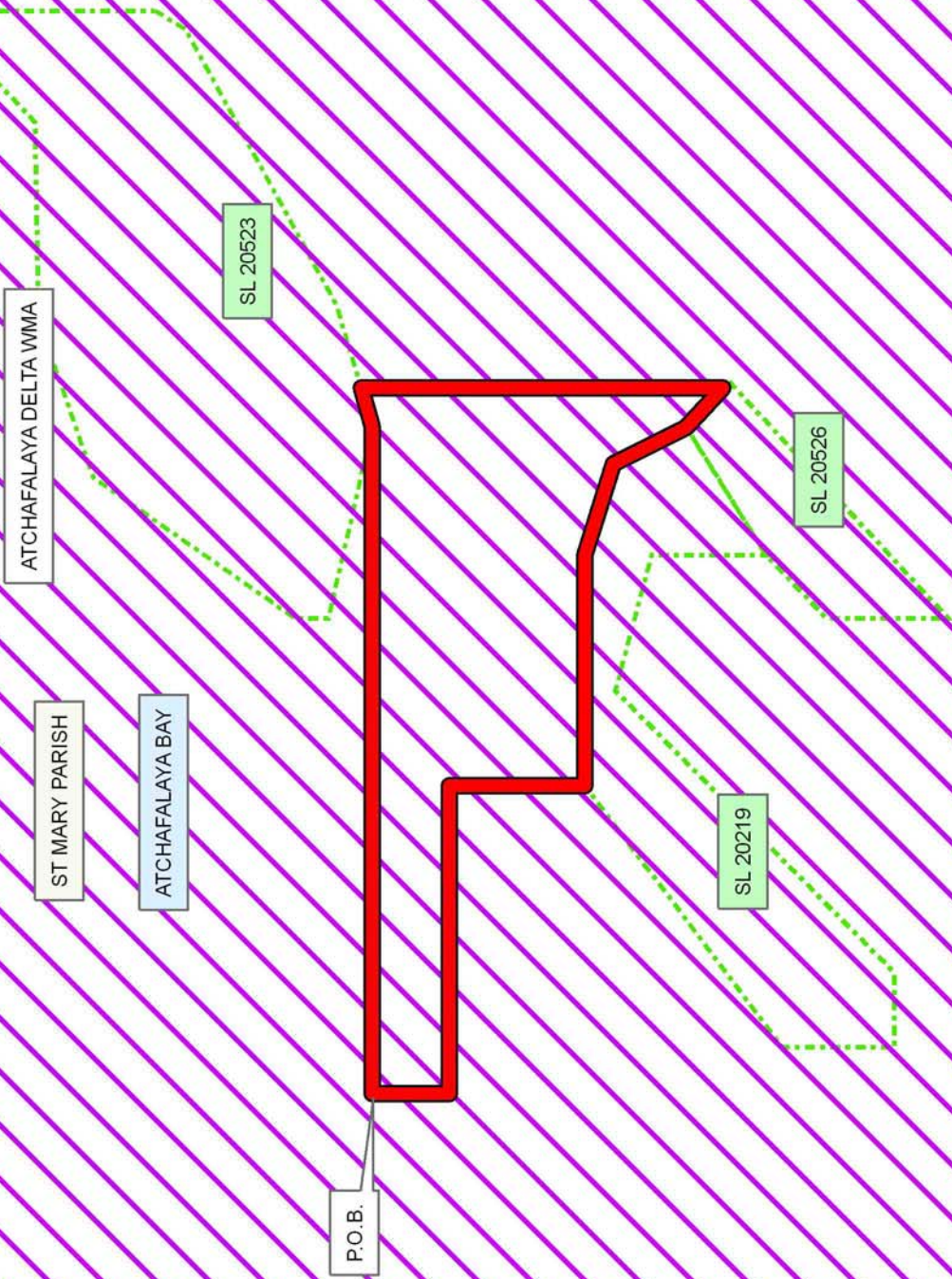
NOTE: This tract is located in an area designated by the Louisiana Legislature or the Wildlife and Fisheries Commission as a Public Oyster Seed Ground, Reservation, or area of Calcasieu or Sabine Lake. Proposed projects occurring in these areas will be evaluated on a case by case basis by Louisiana Department of Wildlife & Fisheries. Modifications to proposed project features including, but not limited to, access routes, well sites, flowlines, and appurtenant structures maybe required by the Louisiana Department of Wildlife and Fisheries. In addition, compensatory mitigation will be required to offset unavoidable habitat impacts.

Applicant: LESLIE M. COOPER

| Bidder | Cash Payment | Price/Acre | Rental | Oil | Gas | Other |
|--------|--------------|------------|--------|-----|-----|-------|
| | | | | | | |
| | | | | | | |
| | | | | | | |
| | | | | | | |

Legend

- 12100034
- Wildlife
- Active Leases



TRACT 42949 - St. Mary Parish, Louisiana

A portion of all lands located above the mean high water mark, together with lands now or formerly constituting the beds and bottoms of any water body of whatever description or nature belonging to the State of Louisiana which is now located within the boundaries of the Atchafalaya Delta Wildlife Management Area and not presently under mineral lease by the State of Louisiana on October 10, 2012, and more particularly located as follows: Beginning at a point within the Atchafalaya Delta Wildlife Management Area having Coordinates of X = 1,976,762.00 and Y = 287,764.45; thence East 10,000.00 feet to a point having Coordinates of X = 1,986,762.00 and Y = 287,764.45; thence South 10,564.45 feet to a point having Coordinates of X = 1,986,762.00 and Y = 277,200.00; thence West 10,000.00 feet to a point having Coordinates of X = 1,976,762.00 and Y = 277,200.00; thence North 2,101.00 feet to the Southwest corner of State Lease No. 20686 having Coordinates of X = 1,976,762.00 and Y = 297,301.00; thence along the boundaries of said State Lease No. 20686 the following courses: East 2,964.00 feet to a point having Coordinates of X = 1,979,726.00 and Y = 279,301.00 and North 2,452.00 feet to its Northeast corner and a point on the South boundary of State Lease No. 20685 having Coordinates of X = 1,979,726.00 and Y = 281,753.00; thence along the boundaries of said State Lease No. 20685 the following courses: East 3,841.00 feet to a point having Coordinates of X = 1,983,567.00 and Y = 281,753.00, North 4,003.00 feet to a point having Coordinates of X = 1,983,567.00 and Y = 285,756.00 and West 6,805.00 feet to its Northwest corner having Coordinates of X = 1,976,762.00 and Y = 285,756.00; thence North 2,008.45 feet to the point of beginning, containing approximately **1,633.06 acres**, all as more particularly outlined on a plat on file in the Office of Mineral Resources, Department of Natural Resources. All bearings, distances and coordinates are based on Louisiana Coordinate System of 1927, (South Zone).

NOTE: The above description of the Tract nominated for lease has been provided and corrected, where required, exclusively by the nomination party. Any mineral lease selected from this Tract and awarded by the Louisiana State Mineral and Energy Board shall be without warranty of any kind, either express, implied, or statutory, including, but not limited to, the implied warranties of merchantability and fitness for a particular purpose. Should the mineral lease awarded by the Louisiana State Mineral and Energy Board be subsequently modified, cancelled or abrogated due to the existence of conflicting leases, operating agreements, private claims or other future obligations or conditions which may affect all or any portion of the leased Tract, it shall not relieve the Lessee of the obligation to pay any bonus due thereon to the Louisiana State Mineral and Energy Board, nor shall the Louisiana State Mineral and Energy Board be obligated to refund any consideration paid by the Lessor prior to such modification, cancellation, or abrogation, including, but not limited to, bonuses, rentals and royalties.

NOTE: The mineral lease is located in the Atchafalaya Delta WMA under the jurisdiction of the Louisiana Department of Wildlife and Fisheries which has promulgated rules and regulations for the protection of game and wildlife on the aforesaid Tract and, therefore, shall be subject to said rules and regulations, a copy of which shall be attached to the mineral leases. In addition to the specific rules and regulations applicable, the following shall apply regarding operations under this mineral lease:

- No activities will be allowed without written authorization of the Louisiana Department of Wildlife and Fisheries.
- Proposed projects will be evaluated on a case by case basis. Modifications to proposed project features including but not limited to access routes, spoil placement, well sites, flowlines and appurtenant structures may be required by the Department of Wildlife and Fisheries.
- Compliance with the Atchafalaya Delta WMA regulations will be required unless otherwise specified by the Department of Wildlife and Fisheries.
- Compensatory mitigation will be required to offset unavoidable wetland impacts.
- Compensation and/or oyster seed ground surveys may be required by the Department for potential impacts to productive oyster seed grounds located within the management area.
- Removal of all structures, facilities and equipment will be required within 120 days of abandonment unless otherwise agreed to in writing by the Louisiana Department of Wildlife and Fisheries.
- No activities will be allowed during the hunting season unless approved by the Department.
- This tract is located within the emerging Atchafalaya Delta. No activities will be allowed on emergent islands, sub aerial mudflats or vegetated wetlands. Drilling will be restricted to passes and open water bays. The Louisiana Department of Wildlife and Fisheries (LDWF) shall have discretion to determine access routes. In the event that LDWF approves of dredging for access, LDWF shall have discretion to require hydraulic or spray dredging to reduce environmental impacts.
- Prior to submitting application for wetland permits to Federal and State permitting agencies the leaseholder shall coordinate project details with the Department of Wildlife and Fisheries. Contact person for the Department will be Mike Windham at (504)284-5268.

Additionally, the Department will require a minimum bonus of \$350.00 per acre and a minimum royalty of 25%.

NOTE: The State of Louisiana does hereby reserve, and this lease shall be subject to, the imprescriptible right of surface use in the nature of a servitude in favor of the Department of Natural Resources, including its

Offices and Commissions, for the sole purpose of implementing, constructing, servicing and maintaining approved coastal zone management and/or restoration projects. Utilization of any and all rights derived under this lease by the mineral lessee, its agents, successors or assigns, shall not interfere with nor hinder the reasonable surface use by the Department of Natural Resources, its Offices or Commissions, as herein above reserved.

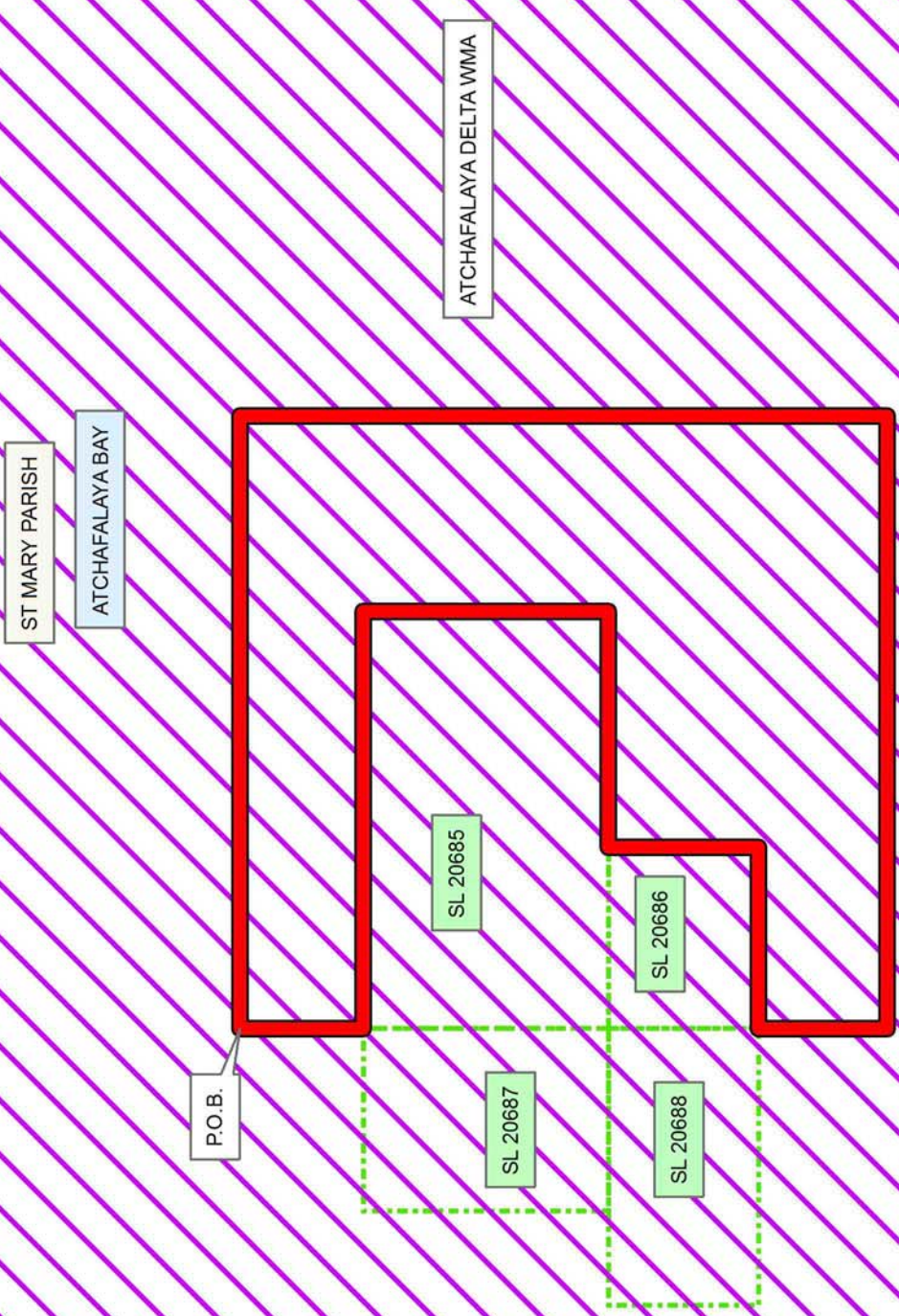
NOTE: This tract is located in an area designated by the Louisiana Legislature or the Wildlife and Fisheries Commission as a Public Oyster Seed Ground, Reservation, or area of Calcasieu or Sabine Lake. Proposed projects occurring in these areas will be evaluated on a case by case basis by Louisiana Department of Wildlife & Fisheries. Modifications to proposed project features including, but not limited to, access routes, well sites, flowlines, and appurtenant structures maybe required by the Louisiana Department of Wildlife and Fisheries. In addition, compensatory mitigation will be required to offset unavoidable habitat impacts.

Applicant: LESLIE M. COOPER

| Bidder | Cash Payment | Price/Acre | Rental | Oil | Gas | Other |
|--------|--------------|------------|--------|-----|-----|-------|
| | | | | | | |
| | | | | | | |
| | | | | | | |
| | | | | | | |

Legend

- 12-100031
- Wildlife
- Active Leases



TRACT 42950 - St. Mary Parish, Louisiana

A portion of all lands located above the mean high water mark, together with lands now or formerly constituting the beds and bottoms of any water body of whatever description or nature belonging to the State of Louisiana which is now located within the boundaries of the Atchafalaya Delta Wildlife Management Area and not presently under mineral lease by the State of Louisiana on October 10, 2012, and more particularly located as follows: Beginning at a point within the Atchafalaya Delta Wildlife Management Area having Coordinates of X = 1,946,762.00 and Y = 286,547.00; thence East 798.00 feet to a point having Coordinates of X = 1,947,560.00 and Y = 286,547.00; thence South 123.34 feet to a point having Coordinates of X = 1,947,560.00 and Y = 286,423.66; thence East 11,365.56 feet to a point having Coordinates of X = 1,958,925.56 and Y = 286,423.66; thence North 123.34 feet to a point having Coordinates of X = 1,958,925.56 and Y = 286,547.00; thence East 5,074.44 feet to a point having Coordinates of X = 1,964,000.00 and Y = 286,547.00; thence South 2,227.00 feet to the Northernmost Northwest corner of State Lease No. 20219 having Coordinates of X = 1,964,000.00 and Y = 284,320.00; thence South 52 degrees 56 minutes 24 seconds West 5,389.57 feet along the boundary of said State Lease No. 20219 to its Westernmost Northwest corner, also being the Northeast corner of State Lease No. 20220 having Coordinates of X = 1,959,699.10 and Y = 281,071.96; thence along the boundary of said State Lease No. 20220 the following courses: South 52 degrees 56 minutes 24 seconds West 2,442.47 feet and South 08 degrees 23 minutes 13 seconds West 384.68 feet to its Southwest corner, also being the Northwest corner of State Lease No. 20222 having Coordinates of X = 1,957,693.89 and Y = 279,219.44; thence South 08 degrees 23 minutes 13 seconds West 600.00 feet along the boundary of said State Lease No. 20222 to the Northernmost corner of State Lease No. 20367 having Coordinates of X = 1,957,606.38 and Y = 278,625.85; thence South 59 degrees 51 minutes 40 seconds West 6,391.65 feet along the boundary of said State Lease No. 20367 to a point having Coordinates of X = 1,952,078.80 and Y = 275,416.63; thence North 1,241.18 feet to the Southeast corner of State Lease No. 20525 having Coordinates of X = 1,952,078.80 and Y = 276,657.81; thence along the boundary of said State Lease No. 20525 the following courses: North 4,905.21 feet and West 5,316.80 feet to its Northwest corner having Coordinates of X = 1,946,762.00 and Y = 281,563.02; thence North 4,983.98 feet to the point of beginning, containing approximately **2,467.58 acres**, all as more particularly outlined on a plat on file in the Office of Mineral Resources, Department of Natural Resources. All bearings, distances and coordinates are based on Louisiana Coordinate System of 1927, (South Zone).

NOTE: The above description of the Tract nominated for lease has been provided and corrected, where required, exclusively by the nomination party. Any mineral lease selected from this Tract and awarded by the Louisiana State Mineral and Energy Board shall be without warranty of any

kind, either express, implied, or statutory, including, but not limited to, the implied warranties of merchantability and fitness for a particular purpose. Should the mineral lease awarded by the Louisiana State Mineral and Energy Board be subsequently modified, cancelled or abrogated due to the existence of conflicting leases, operating agreements, private claims or other future obligations or conditions which may affect all or any portion of the leased Tract, it shall not relieve the Lessee of the obligation to pay any bonus due thereon to the Louisiana State Mineral and Energy Board, nor shall the Louisiana State Mineral and Energy Board be obligated to refund any consideration paid by the Lessor prior to such modification, cancellation, or abrogation, including, but not limited to, bonuses, rentals and royalties.

NOTE: The mineral lease is located in the Atchafalaya Delta WMA under the jurisdiction of the Louisiana Department of Wildlife and Fisheries which has promulgated rules and regulations for the protection of game and wildlife on the aforesaid Tract and, therefore, shall be subject to said rules and regulations, a copy of which shall be attached to the mineral leases. In addition to the specific rules and regulations applicable, the following shall apply regarding operations under this mineral lease:

- No activities will be allowed without written authorization of the Louisiana Department of Wildlife and Fisheries.
- Proposed projects will be evaluated on a case by case basis. Modifications to proposed project features including but not limited to access routes, spoil placement, well sites, flowlines and appurtenant structures may be required by the Department of Wildlife and Fisheries.
- Compliance with the Atchafalaya Delta WMA regulations will be required unless otherwise specified by the Department of Wildlife and Fisheries.
- Compensatory mitigation will be required to offset unavoidable wetland impacts.
- Compensation and/or oyster seed ground surveys may be required by the Department for potential impacts to productive oyster seed grounds located within the management area.
- Removal of all structures, facilities and equipment will be required within 120 days of abandonment unless otherwise agreed to in writing by the Louisiana Department of Wildlife and Fisheries.
- No activities will be allowed during the hunting season unless approved by the Department.
- This tract is located within the emerging Atchafalaya Delta. No activities will be allowed on emergent islands, sub aerial mudflats or vegetated wetlands. Drilling will be restricted to passes and open water bays. The Louisiana Department of Wildlife and Fisheries (LDWF) shall have discretion to determine access routes. In the event that LDWF approves of dredging for access, LDWF shall have discretion to require hydraulic or spray dredging to reduce environmental impacts.

- Prior to submitting application for wetland permits to Federal and State permitting agencies the leaseholder shall coordinate project details with the Department of Wildlife and Fisheries. Contact person for the Department will be Mike Windham at (504)284-5268.

Additionally, the Department will require a minimum bonus of \$350.00 per acre and a minimum royalty of 25%.

NOTE: The above described tract may be in the vicinity of existing shell reefs where drilling and dredging operations must be conducted in strict conformity with the regulations adopted by the Louisiana Department of Wildlife and Fisheries and/or the U.S. Corps of Engineers, U.S. Army.

NOTE: The State of Louisiana does hereby reserve, and this lease shall be subject to, the imprescriptible right of surface use in the nature of a servitude in favor of the Department of Natural Resources, including its Offices and Commissions, for the sole purpose of implementing, constructing, servicing and maintaining approved coastal zone management and/or restoration projects. Utilization of any and all rights derived under this lease by the mineral lessee, its agents, successors or assigns, shall not interfere with nor hinder the reasonable surface use by the Department of Natural Resources, its Offices or Commissions, as herein above reserved.

NOTE: This tract is located in an area designated by the Louisiana Legislature or the Wildlife and Fisheries Commission as a Public Oyster Seed Ground, Reservation, or area of Calcasieu or Sabine Lake. Proposed projects occurring in these areas will be evaluated on a case by case basis by Louisiana Department of Wildlife & Fisheries. Modifications to proposed project features including, but not limited to, access routes, well sites, flowlines, and appurtenant structures maybe required by the Louisiana Department of Wildlife and Fisheries. In addition, compensatory mitigation will be required to offset unavoidable habitat impacts.

Applicant: LESLIE M. COOPER

| Bidder | Cash Payment | Price/Acre | Rental | Oil | Gas | Other |
|--------|--------------|------------|--------|-----|-----|-------|
| | | | | | | |
| | | | | | | |
| | | | | | | |
| | | | | | | |

Legend

- 12100028
- Wildlife
- Active_Leases

ST MARY PARISH
ATCHAFALAYA DELTA WMA

P.O.B.

ATCHAFALAYA BAY

SL 20219

SL 20220

SL 20367

SL 20525



TRACT 42951 - St. Mary Parish, Louisiana

A portion of all lands located above the mean high water mark, together with lands now or formerly constituting the beds and bottoms of any water body of whatever description or nature belonging to the State of Louisiana which is now located within the boundaries of the Atchafalaya Delta Wildlife Management Area and not presently under mineral lease by the State of Louisiana on October 10, 2012, and more particularly located as follows: ***Beginning at a point within the Atchafalaya Delta Wildlife Management Area having Coordinates of X = 1,946,762.00 and Y = 285,129.85; thence South 3,566.83 feet to the Northwest corner of State Lease No. 20525 having Coordinates of X = 1,946,762.00 and Y = 281,563.02; thence West 3,902.00 feet to a point having Coordinates of X = 1,942,860.00 and Y = 281,563.02; thence South 5,363.02 feet to a point having Coordinates of X = 1,942,860.00 and Y = 276,200.00; thence West 2,230.00 feet to a point having Coordinates of X = 1,940,630.00 and Y = 276,200.00; thence South 4,320.00 feet to a point having Coordinates of X = 1,940,630.00 and Y = 271,880.00; thence West 3,368.15 feet to a point on the East boundary of State Lease No. 340, as amended, having Coordinates of X = 1,937,261.85 and Y = 271,880.00; thence along the boundaries of said State Lease No. 340 the following courses: North 00 degrees 08 minutes 00 seconds East 5,664.02 feet to a point having Coordinates of X = 1,937,275.03 and Y = 277,544.00, West 4,027.03 feet to a point having Coordinates of X = 1,933,248.00 and Y = 277,544.00 and North 7,585.85 feet to a point having Coordinates of X = 1,933,248.00 and Y = 285,129.85; thence East 13,514.00 feet to the point of beginning, containing approximately 2,499.31 acres,*** all as more particularly outlined on a plat on file in the Office of Mineral Resources, Department of Natural Resources. All bearings, distances and coordinates are based on Louisiana Coordinate System of 1927, (South Zone).

NOTE: The above description of the Tract nominated for lease has been provided and corrected, where required, exclusively by the nomination party. Any mineral lease selected from this Tract and awarded by the Louisiana State Mineral and Energy Board shall be without warranty of any kind, either express, implied, or statutory, including, but not limited to, the implied warranties of merchantability and fitness for a particular purpose. Should the mineral lease awarded by the Louisiana State Mineral and Energy Board be subsequently modified, cancelled or abrogated due to the existence of conflicting leases, operating agreements, private claims or other future obligations or conditions which may affect all or any portion of the leased Tract, it shall not relieve the Lessee of the obligation to pay any bonus due thereon to the Louisiana State Mineral and Energy Board, nor shall the Louisiana State Mineral and Energy Board be obligated to refund any consideration paid by the Lessor prior to such modification, cancellation, or abrogation, including, but not limited to, bonuses, rentals and royalties.

NOTE: The mineral lease is located in the Atchafalaya Delta WMA under the jurisdiction of the Louisiana Department of Wildlife and Fisheries which

has promulgated rules and regulations for the protection of game and wildlife on the aforesaid Tract and, therefore, shall be subject to said rules and regulations, a copy of which shall be attached to the mineral leases. In addition to the specific rules and regulations applicable, the following shall apply regarding operations under this mineral lease:

- No activities will be allowed without written authorization of the Louisiana Department of Wildlife and Fisheries.
- Proposed projects will be evaluated on a case by case basis. Modifications to proposed project features including but not limited to access routes, spoil placement, well sites, flowlines and appurtenant structures may be required by the Department of Wildlife and Fisheries.
- Compliance with the Atchafalaya Delta WMA regulations will be required unless otherwise specified by the Department of Wildlife and Fisheries.
- Compensatory mitigation will be required to offset unavoidable wetland impacts.
- Compensation and/or oyster seed ground surveys may be required by the Department for potential impacts to productive oyster seed grounds located within the management area.
- Removal of all structures, facilities and equipment will be required within 120 days of abandonment unless otherwise agreed to in writing by the Louisiana Department of Wildlife and Fisheries.
- No activities will be allowed during the hunting season unless approved by the Department.
- This tract is located within the emerging Atchafalaya Delta. No activities will be allowed on emergent islands, sub aerial mudflats or vegetated wetlands. Drilling will be restricted to passes and open water bays. The Louisiana Department of Wildlife and Fisheries (LDWF) shall have discretion to determine access routes. In the event that LDWF approves of dredging for access, LDWF shall have discretion to require hydraulic or spray dredging to reduce environmental impacts.
- Prior to submitting application for wetland permits to Federal and State permitting agencies the leaseholder shall coordinate project details with the Department of Wildlife and Fisheries. Contact person for the Department will be Mike Windham at (504)284-5268.

Additionally, the Department will require a minimum bonus of \$350.00 per acre and a minimum royalty of 25%.

NOTE: The acreage contained herein, being a portion of State Lease 335, 340 or 341, was subject to the litigation between Texaco, Inc. and the State of Louisiana which resulted in the Global Settlement Agreement compromise whereby this acreage was reassigned through various mesne conveyances to the successors of William T. Burton, the original lessee

of said leases from the State, (hereinafter otherwise referred to as the "ORRO's) and approved by the State Mineral and Energy Board, becoming effective April 25, 1994. Under separate agreement by and between the State and the ORRO's, certain obligations were to be met within a specified time frame or the ORRO's became obligated to release the reassigned acreage back to the State. The obligations were not met within the specified time frame and the State began securing the releases for the acreage contained herein. Due to the extremely large number of ORRO's, their nationwide and worldwide dispersal, the unreliability of available contact information and/or a present inability to obtain full, requisite cooperation, the State has, as yet, not secured releases from certain ORRO's representing approximately a .0258336 interest in this acreage. Accordingly, although the State is diligently pursuing the requisite releases affecting this acreage (the furnishing of which the ORRO's representing the stated decimal interest are obligated), nevertheless, a party obtaining a mineral lease from the State of Louisiana on the acreage contained herein shall do so with full knowledge that a complete release of all specific ORRO interest in this acreage has not as yet been secured and shall assume a business risk commensurate with the unsecured interest release.

NOTE: The above described tract may be in the vicinity of existing shell reefs where drilling and dredging operations must be conducted in strict conformity with the regulations adopted by the Louisiana Department of Wildlife and Fisheries and/or the U.S. Corps of Engineers, U.S. Army.

NOTE: The State of Louisiana does hereby reserve, and this lease shall be subject to, the imprescriptible right of surface use in the nature of a servitude in favor of the Department of Natural Resources, including its Offices and Commissions, for the sole purpose of implementing, constructing, servicing and maintaining approved coastal zone management and/or restoration projects. Utilization of any and all rights derived under this lease by the mineral lessee, its agents, successors or assigns, shall not interfere with nor hinder the reasonable surface use by the Department of Natural Resources, its Offices or Commissions, as herein above reserved.

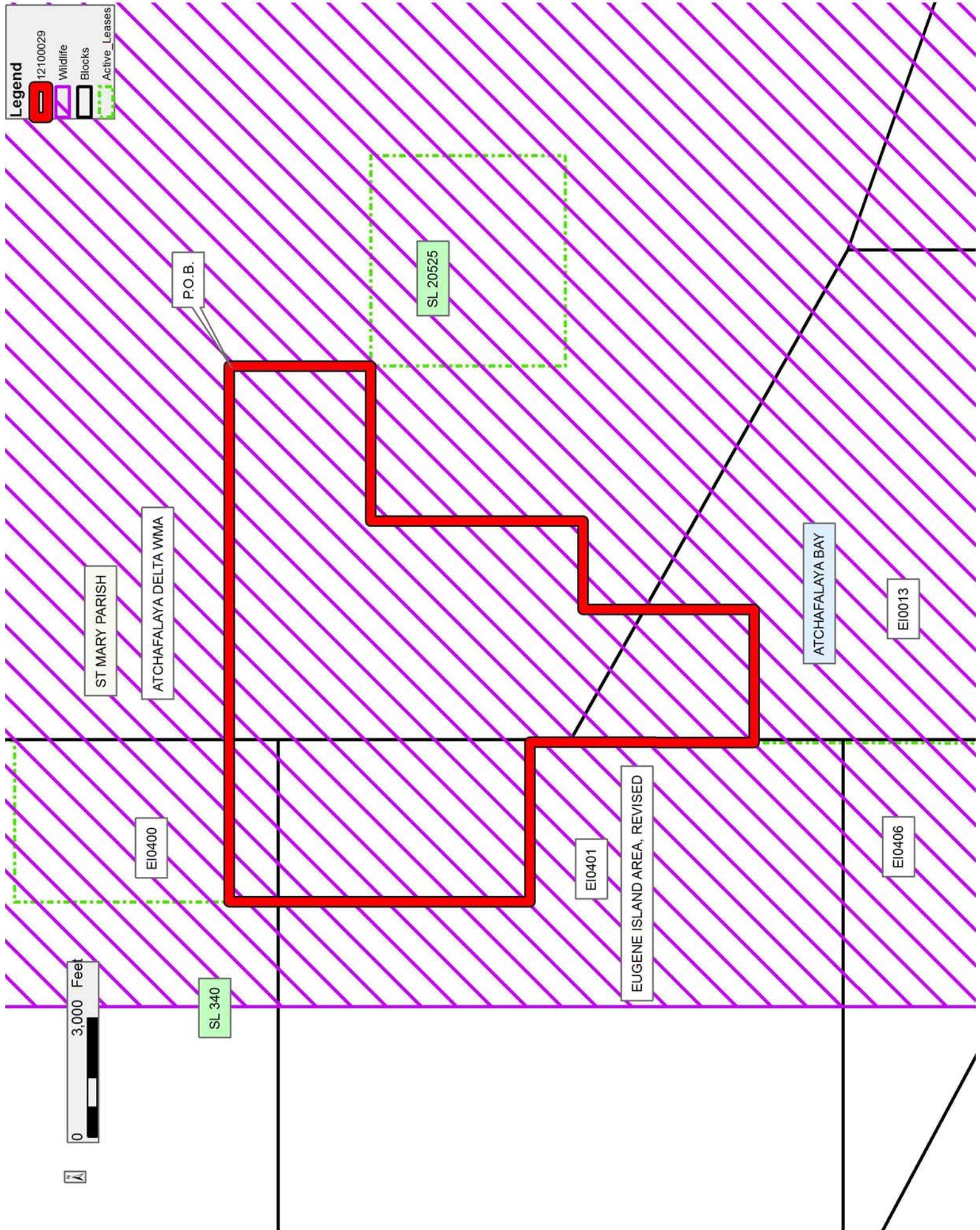
NOTE: This tract is located in an area designated by the Louisiana Legislature or the Wildlife and Fisheries Commission as a Public Oyster Seed Ground, Reservation, or area of Calcasieu or Sabine Lake. Proposed projects occurring in these areas will be evaluated on a case by case basis by Louisiana Department of Wildlife & Fisheries. Modifications to proposed project features including, but not limited to, access routes, well sites, flowlines, and appurtenant structures maybe required by the Louisiana Department of Wildlife and Fisheries. In addition, compensatory mitigation will be required to offset unavoidable habitat impacts.

Applicant: LESLIE M. COOPER

| Bidder | Cash Payment | Price/Acre | Rental | Oil | Gas | Other |
|--------|--------------|------------|--------|-----|-----|-------|
| | | | | | | |
| | | | | | | |
| | | | | | | |
| | | | | | | |

Legend

- 12-100029
- Wildlife
- Blocks
- Active Leases



TRACT 42952 - St. Mary Parish, Louisiana

A portion of all lands located above the mean high water mark, together with lands now or formerly constituting the beds and bottoms of any water body of whatever description or nature belonging to the State of Louisiana which is now located within the boundaries of the Atchafalaya Delta Wildlife Management Area and not presently under mineral lease by the State of Louisiana on October 10, 2012, and more particularly located as follows: Beginning at a point within the Atchafalaya Delta Wildlife Management Area having Coordinates of X = 1,942,860.00 and Y = 281,563.02; thence East 3,902.00 feet to the Northwest corner of State Lease No. 20525 having Coordinates of X = 1,946,762.00 and Y = 281,563.02; thence along the boundary of said State Lease No. 20525 the following courses: South 4,905.21 feet and East 5,316.80 feet to its Southeast corner having Coordinates of X = 1,952,078.80 and Y = 276,657.81; thence South 1,241.18 feet to a point on the boundary of State Lease No. 20367 having Coordinates of X = 1,952,078.80 and Y = 275,416.63; thence South 59 degrees 51 minutes 40 seconds West 1,825.60 feet along the boundary of said State Lease No. 20367 to its Westernmost corner, also being the Northeast corner of State Lease No. 20368 having Coordinates of X = 1,950,500.00 and Y = 274,500.00; thence South 59 degrees 51 minutes 40 seconds West 666.51 feet along the boundary of said State Lease No. 20368 to the Northernmost Northeast corner of State Lease No. 20529 having Coordinates of X = 1,949,923.60 and Y = 274,165.35; thence along the boundary of said State Lease No. 20529 the following courses: North 74 degrees 30 minutes 55 seconds West 1,337.34 feet; South 75 degrees 05 minutes 25 seconds West 890.66 feet and South 34 degrees 38 minutes 15 seconds West 1,780.71 feet to its Westernmost Northwest corner, also being the Northernmost corner of State Lease No. 20530 having Coordinates of X = 1,946,762.00 and Y = 272,828.12; thence along the boundary of said State Lease No. 20530 the following courses: South 34 degrees 38 minutes 15 seconds West 2,584.02 feet and South 17 degrees 23 minutes 50 seconds West 3,656.87 feet to its Southwest corner, also being the Northwest corner of State Lease No. 20531 having Coordinates of X = 1,944,199.91 and Y = 267,212.50; thence along the boundary of said State Lease No. 20531 the following courses: South 52 degrees 28 minutes 36 seconds West 1,872.89 feet and South 63 degrees 55 minutes 11 seconds West 1,343.22 feet to its Southwest corner, also being the Northernmost Northwest corner of State Lease No. 20534 having Coordinates of X = 1,941,508.06 and Y = 265,481.23; thence along the boundary of said State Lease No. 20534 the following courses: South 71 degrees 08 minutes 36 seconds West 1,112.28 feet and South 01 degrees 18 minutes 11 seconds West 1,574.63 feet to the Northeast corner of State Lease No. 20533 having Coordinates of X = 1,940,419.67 and Y = 263,547.52; thence along the boundary of said State Lease No. 20533 the following courses: North 57 degrees 44 minutes 07 seconds West 3,691.41 feet and North 89 degrees 59 minutes 59 seconds West 51.22 feet to its Northwest corner, also being a point on the East boundary of State Lease No. 340, as amended, having Coordinates of X = 1,937,247.04 and Y = 265,518.11; thence North 00 degrees 08 minutes 00 seconds East 6,361.90 feet along

the boundary of said State Lease No. 340 to a point having Coordinates of X = 1,937,261.85 and Y = 271,880.00; thence East 3,368.15 feet to a point having Coordinates of X = 1,940,630.00 and Y = 271,880.00; thence North 4,320.00 feet to a point having Coordinates of X = 1,940,630.00 and Y = 276,200.00; thence East 2,230.00 feet to a point having Coordinates of X = 1,942,860.00 and Y = 276,200.00; thence North 5,363.02 feet to the point of beginning, containing approximately **2,488.72 acres**, all as more particularly outlined on a plat on file in the Office of Mineral Resources, Department of Natural Resources. All bearings, distances and coordinates are based on Louisiana Coordinate System of 1927, (South Zone).

NOTE: The above description of the Tract nominated for lease has been provided and corrected, where required, exclusively by the nomination party. Any mineral lease selected from this Tract and awarded by the Louisiana State Mineral and Energy Board shall be without warranty of any kind, either express, implied, or statutory, including, but not limited to, the implied warranties of merchantability and fitness for a particular purpose. Should the mineral lease awarded by the Louisiana State Mineral and Energy Board be subsequently modified, cancelled or abrogated due to the existence of conflicting leases, operating agreements, private claims or other future obligations or conditions which may affect all or any portion of the leased Tract, it shall not relieve the Lessee of the obligation to pay any bonus due thereon to the Louisiana State Mineral and Energy Board, nor shall the Louisiana State Mineral and Energy Board be obligated to refund any consideration paid by the Lessor prior to such modification, cancellation, or abrogation, including, but not limited to, bonuses, rentals and royalties.

NOTE: The mineral lease is located in the Atchafalaya Delta WMA under the jurisdiction of the Louisiana Department of Wildlife and Fisheries which has promulgated rules and regulations for the protection of game and wildlife on the aforesaid Tract and, therefore, shall be subject to said rules and regulations, a copy of which shall be attached to the mineral leases. In addition to the specific rules and regulations applicable, the following shall apply regarding operations under this mineral lease:

- No activities will be allowed without written authorization of the Louisiana Department of Wildlife and Fisheries.
- Proposed projects will be evaluated on a case by case basis. Modifications to proposed project features including but not limited to access routes, spoil placement, well sites, flowlines and appurtenant structures may be required by the Department of Wildlife and Fisheries.
- Compliance with the Atchafalaya Delta WMA regulations will be required unless otherwise specified by the Department of Wildlife and Fisheries.

- Compensatory mitigation will be required to offset unavoidable wetland impacts.
- Compensation and/or oyster seed ground surveys may be required by the Department for potential impacts to productive oyster seed grounds located within the management area.
- Removal of all structures, facilities and equipment will be required within 120 days of abandonment unless otherwise agreed to in writing by the Louisiana Department of Wildlife and Fisheries.
- No activities will be allowed during the hunting season unless approved by the Department.
- This tract is located within the emerging Atchafalaya Delta. No activities will be allowed on emergent islands, sub aerial mudflats or vegetated wetlands. Drilling will be restricted to passes and open water bays. The Louisiana Department of Wildlife and Fisheries (LDWF) shall have discretion to determine access routes. In the event that LDWF approves of dredging for access, LDWF shall have discretion to require hydraulic or spray dredging to reduce environmental impacts.
- Prior to submitting application for wetland permits to Federal and State permitting agencies the leaseholder shall coordinate project details with the Department of Wildlife and Fisheries. Contact person for the Department will be Mike Windham at (504)284-5268.

Additionally, the Department will require a minimum bonus of \$350.00 per acre and a minimum royalty of 25%.

NOTE: The above described tract may be in the vicinity of existing shell reefs where drilling and dredging operations must be conducted in strict conformity with the regulations adopted by the Louisiana Department of Wildlife and Fisheries and/or the U.S. Corps of Engineers, U.S. Army.

NOTE: The State of Louisiana does hereby reserve, and this lease shall be subject to, the imprescriptible right of surface use in the nature of a servitude in favor of the Department of Natural Resources, including its Offices and Commissions, for the sole purpose of implementing, constructing, servicing and maintaining approved coastal zone management and/or restoration projects. Utilization of any and all rights derived under this lease by the mineral lessee, its agents, successors or assigns, shall not interfere with nor hinder the reasonable surface use by the Department of Natural Resources, its Offices or Commissions, as herein above reserved.

NOTE: This tract is located in an area designated by the Louisiana Legislature or the Wildlife and Fisheries Commission as a Public Oyster Seed Ground, Reservation, or area of Calcasieu or Sabine Lake. Proposed projects occurring in these areas will be evaluated on a case by case basis by Louisiana Department of Wildlife & Fisheries. Modifications to proposed project features including, but not limited to, access routes,

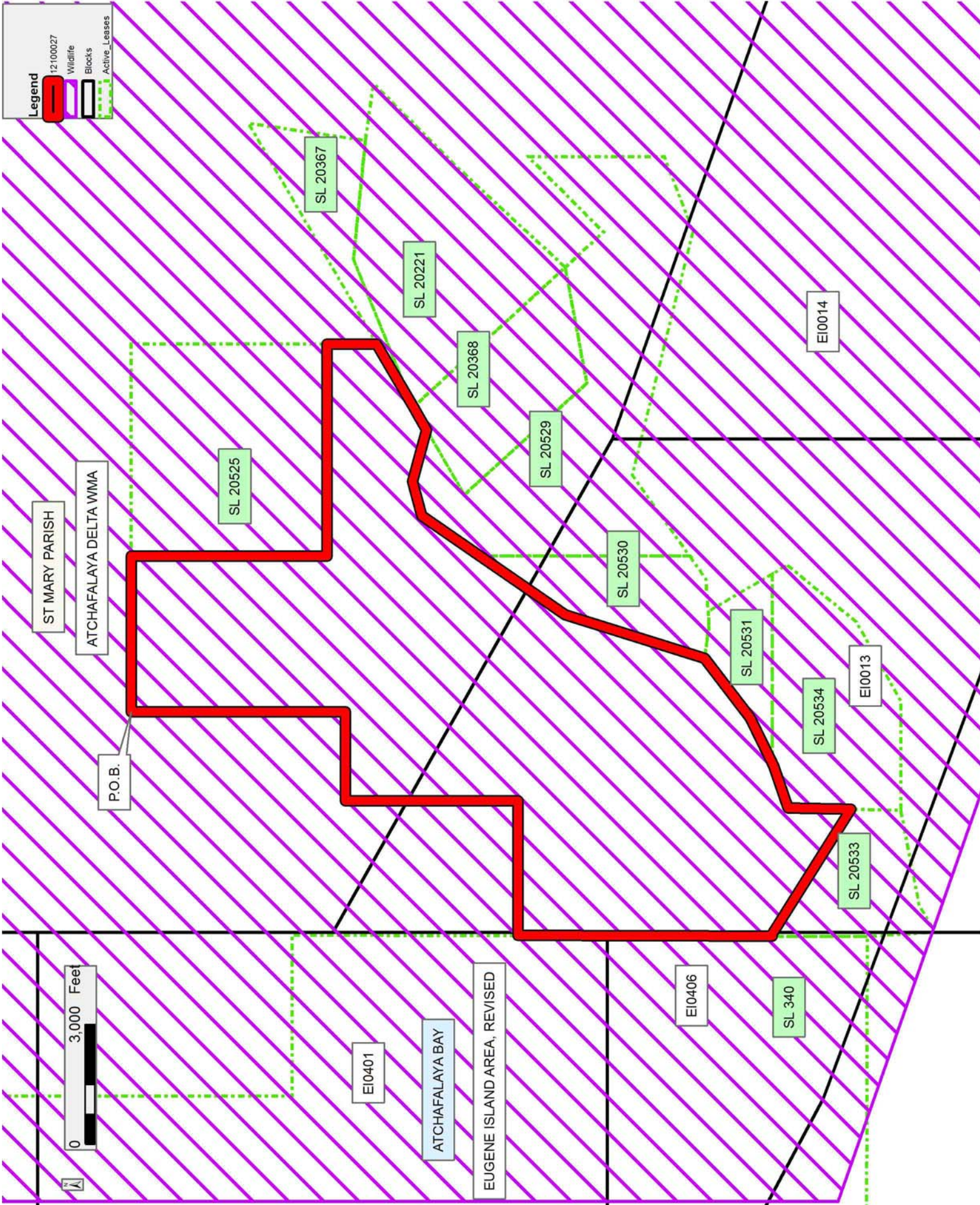
well sites, flowlines, and appurtenant structures maybe required by the Louisiana Department of Wildlife and Fisheries. In addition, compensatory mitigation will be required to offset unavoidable habitat impacts.

Applicant: LESLIE M. COOPER

| Bidder | Cash Payment | Price/Acre | Rental | Oil | Gas | Other |
|--------|--------------|------------|--------|-----|-----|-------|
| | | | | | | |
| | | | | | | |
| | | | | | | |
| | | | | | | |

Legend

- 12100027
- Wildlife
- Blocks
- Active Leases



TRACT 42953 - St. Mary Parish, Louisiana

A portion of all lands located above the mean high water mark, together with lands now or formerly constituting the beds and bottoms of any water body of whatever description or nature belonging to the State of Louisiana which is now located within the boundaries of the Atchafalaya Delta Wildlife Management Area and not presently under mineral lease by the State of Louisiana on October 10, 2012, and more particularly located as follows: Beginning at a point within the Atchafalaya Delta Wildlife Management Area on the South boundary of State Lease No. 20755 having Coordinates of X = 1,940,403.00 and Y = 261,731.70; thence South 89 degrees 46 minutes 06 seconds East 3,003.85 feet along the South boundary of said State Lease No. 20755 to its Southeast corner and a point on the West boundary of State Lease No. 20532 having Coordinates of X = 1,943,406.83 and Y = 261,719.55; thence along the boundary of said State Lease No. 20532 the following courses: South 24 degrees 35 minutes 56 seconds East 2,485.00 to a point having Coordinates of X = 1,944,441.24 and Y = 259,460.08, North 65 degrees 21 minutes 49 seconds East 5,305.00 feet to a point having Coordinates of X = 1,949,263.33 and Y = 261,671.52 and North 38 degrees 07 minutes 53 seconds West 2,519.35 feet to the most Southern point of State Lease No. 20753 having Coordinates of X = 1,947,707.72 and Y = 263,653.24; thence North 61 degrees 58 minutes 54 seconds East 1,868.09 feet along the Southern boundary of said State Lease No. 20753 to a point having Coordinates of X = 1,949,356.86 and Y = 264,530.78; thence South 3,326.34 feet to the Southwest corner of State Lease No. 20223 and the Northwest corner of State Lease No. 20224 having Coordinates of X = 1,949,356.86 and Y = 261,204.44; thence along the boundaries of said State Lease No. 20224 the following courses: South 41 degrees 25 minutes 25 seconds West 539.37 feet to a point having Coordinates of X = 1,949,000.00 and Y = 260,800.00 and South 32 degrees 00 minutes 19 seconds East 673.32 feet to a point having Coordinates of X = 1,949,356.86 and Y = 260,229.02; thence South approximately 2,913.03 feet to a point of intersection with the South boundary of the Atchafalaya Delta Wildlife Management Area having Coordinates of X = 1,949,356.86 and Y = 257,315.99; thence Northwesterly, on a straight line, approximately 11,884.66 feet along the South boundary of said Atchafalaya Delta Wildlife Management Area to a point being a Southern corner of said State Lease No. 20755 having Coordinates of X = 1,938,136.55 and Y = 261,233.88; thence along the boundaries of said State Lease No. 20755 the following courses: North 64 degrees 06 minutes 06 seconds East 153.91 feet to a point having Coordinates of X = 1,938,275.00 and Y = 261,301.10 and North 78 degrees 33 minutes 38 seconds East 2,171.13 feet to the point of beginning, **LESS AND EXCEPT** all portions of the above described tract that may fall outside the Atchafalaya Delta Wildlife Management Area, containing approximately **516.35 acres**, all as more particularly outlined on a plat on file in the Office of Mineral Resources, Department of Natural Resources. All bearings, distances and coordinates are based on Louisiana Coordinate System of 1927, (South Zone).

NOTE: The above description of the Tract nominated for lease has been provided and corrected, where required, exclusively by the nomination party. Any mineral lease selected from this Tract and awarded by the Louisiana State Mineral and Energy Board shall be without warranty of any kind, either express, implied, or statutory, including, but not limited to, the implied warranties of merchantability and fitness for a particular purpose. Should the mineral lease awarded by the Louisiana State Mineral and Energy Board be subsequently modified, cancelled or abrogated due to the existence of conflicting leases, operating agreements, private claims or other future obligations or conditions which may affect all or any portion of the leased Tract, it shall not relieve the Lessee of the obligation to pay any bonus due thereon to the Louisiana State Mineral and Energy Board, nor shall the Louisiana State Mineral and Energy Board be obligated to refund any consideration paid by the Lessor prior to such modification, cancellation, or abrogation, including, but not limited to, bonuses, rentals and royalties.

NOTE: The mineral lease is located in the Atchafalaya Delta WMA under the jurisdiction of the Louisiana Department of Wildlife and Fisheries which has promulgated rules and regulations for the protection of game and wildlife on the aforesaid Tract and, therefore, shall be subject to said rules and regulations, a copy of which shall be attached to the mineral leases. In addition to the specific rules and regulations applicable, the following shall apply regarding operations under this mineral lease:

- No activities will be allowed without written authorization of the Louisiana Department of Wildlife and Fisheries.
- Proposed projects will be evaluated on a case by case basis. Modifications to proposed project features including but not limited to access routes, spoil placement, well sites, flowlines and appurtenant structures may be required by the Department of Wildlife and Fisheries.
- Compliance with the Atchafalaya Delta WMA regulations will be required unless otherwise specified by the Department of Wildlife and Fisheries.
- Compensatory mitigation will be required to offset unavoidable wetland impacts.
- Compensation and/or oyster seed ground surveys may be required by the Department for potential impacts to productive oyster seed grounds located within the management area.
- Removal of all structures, facilities and equipment will be required within 120 days of abandonment unless otherwise agreed to in writing by the Louisiana Department of Wildlife and Fisheries.
- No activities will be allowed during the hunting season unless approved by the Department.
- This tract is located within the emerging Atchafalaya Delta. No activities will be allowed on emergent islands, sub aerial mudflats or vegetated wetlands. Drilling will be restricted to passes and open

water bays. The Louisiana Department of Wildlife and Fisheries (LDWF) shall have discretion to determine access routes. In the event that LDWF approves of dredging for access, LDWF shall have discretion to require hydraulic or spray dredging to reduce environmental impacts.

- Prior to submitting application for wetland permits to Federal and State permitting agencies the leaseholder shall coordinate project details with the Department of Wildlife and Fisheries. Contact person for the Department will be Mike Windham at (504)284-5268.

Additionally, the Department will require a minimum bonus of \$350.00 per acre and a minimum royalty of 25%.

NOTE: The above described tract may be in the vicinity of existing shell reefs where drilling and dredging operations must be conducted in strict conformity with the regulations adopted by the Louisiana Department of Wildlife and Fisheries and/or the U.S. Corps of Engineers, U.S. Army.

NOTE: The State of Louisiana does hereby reserve, and this lease shall be subject to, the imprescriptible right of surface use in the nature of a servitude in favor of the Department of Natural Resources, including its Offices and Commissions, for the sole purpose of implementing, constructing, servicing and maintaining approved coastal zone management and/or restoration projects. Utilization of any and all rights derived under this lease by the mineral lessee, its agents, successors or assigns, shall not interfere with nor hinder the reasonable surface use by the Department of Natural Resources, its Offices or Commissions, as herein above reserved.

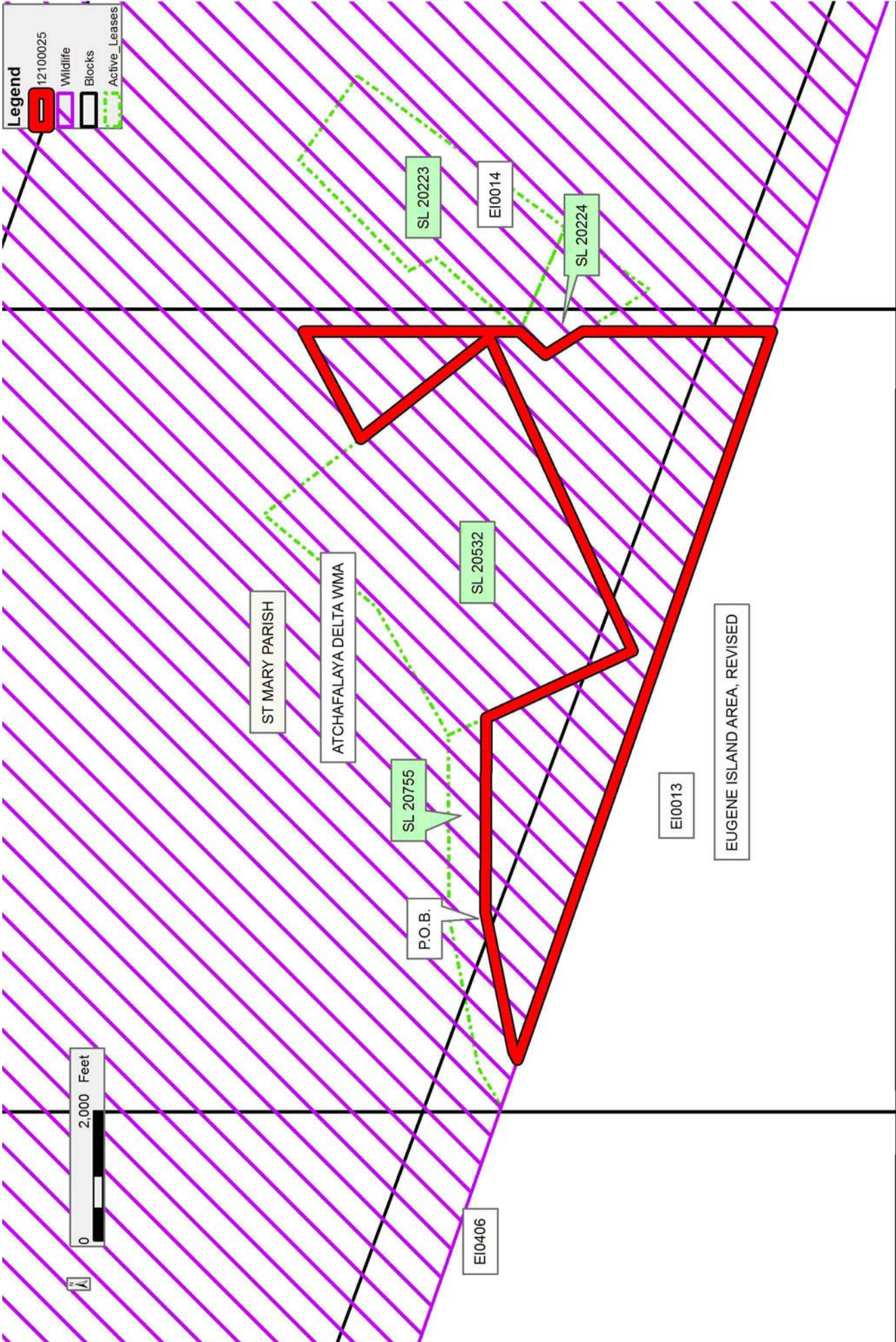
NOTE: This tract is located in an area designated by the Louisiana Legislature or the Wildlife and Fisheries Commission as a Public Oyster Seed Ground, Reservation, or area of Calcasieu or Sabine Lake. Proposed projects occurring in these areas will be evaluated on a case by case basis by Louisiana Department of Wildlife & Fisheries. Modifications to proposed project features including, but not limited to, access routes, well sites, flowlines, and appurtenant structures maybe required by the Louisiana Department of Wildlife and Fisheries. In addition, compensatory mitigation will be required to offset unavoidable habitat impacts.

Applicant: LESLIE M. COOPER

| Bidder | Cash Payment | Price/Acre | Rental | Oil | Gas | Other |
|--------|--------------|------------|--------|-----|-----|-------|
| | | | | | | |
| | | | | | | |
| | | | | | | |
| | | | | | | |

Legend

- 12:100025
- Wildlife
- Blocks
- Active_Leases



TRACT 42954 - St. Mary Parish, Louisiana

A portion of all lands located above the mean high water mark, together with lands now or formerly constituting the beds and bottoms of any water body of whatever description or nature belonging to the State of Louisiana which is now located within the boundaries of the Atchafalaya Delta Wildlife Management Area and not presently under mineral lease by the State of Louisiana on October 10, 2012, and more particularly located as follows: Beginning at a point within the Atchafalaya Delta Wildlife Management Area on the South boundary of State Lease No. 340, as amended having Coordinates of X = 1,932,641.37 and Y = 263,152.68; thence South 89 degrees 52 minutes 00 seconds East 577.31 feet along the South boundary of said State Lease No. 340 to the Northwest corner of State Lease No. 20754 having Coordinates of X = 1,933,218.68 and Y = 263,151.33; thence South 50 degrees 06 minutes 50 seconds West approximately 220.24 feet along the West boundary of said State Lease No. 20754 to its Southwest corner and a point of intersection with the South boundary of the Atchafalaya Delta Wildlife Management Area having Coordinates of X = 1,933,049.68 and Y = 263,010.10; thence Northwesterly, on a straight line, approximately 432.49 feet along the South boundary of said Atchafalaya Delta Wildlife Management Area to the point of beginning, **LESS AND EXCEPT** any portion of said State Lease No. 340 that may fall within said described property and **LESS AND EXCEPT** all portions of the above described tract that may fall outside the Atchafalaya Delta Wildlife Management Area, containing approximately **0.94 acres**, all as more particularly outlined on a plat on file in the Office of Mineral Resources, Department of Natural Resources. All bearings, distances and coordinates are based on Louisiana Coordinate System of 1927, (South Zone).

NOTE: The above description of the Tract nominated for lease has been provided and corrected, where required, exclusively by the nomination party. Any mineral lease selected from this Tract and awarded by the Louisiana State Mineral and Energy Board shall be without warranty of any kind, either express, implied, or statutory, including, but not limited to, the implied warranties of merchantability and fitness for a particular purpose. Should the mineral lease awarded by the Louisiana State Mineral and Energy Board be subsequently modified, cancelled or abrogated due to the existence of conflicting leases, operating agreements, private claims or other future obligations or conditions which may affect all or any portion of the leased Tract, it shall not relieve the Lessee of the obligation to pay any bonus due thereon to the Louisiana State Mineral and Energy Board, nor shall the Louisiana State Mineral and Energy Board be obligated to refund any consideration paid by the Lessor prior to such modification, cancellation, or abrogation, including, but not limited to, bonuses, rentals and royalties.

NOTE: The mineral lease is located in the Atchafalaya Delta WMA under the jurisdiction of the Louisiana Department of Wildlife and Fisheries which has promulgated rules and regulations for the protection of game and wildlife on the aforesaid Tract and, therefore, shall be subject to said

rules and regulations, a copy of which shall be attached to the mineral leases. In addition to the specific rules and regulations applicable, the following shall apply regarding operations under this mineral lease:

- No activities will be allowed without written authorization of the Louisiana Department of Wildlife and Fisheries.
- Proposed projects will be evaluated on a case by case basis. Modifications to proposed project features including but not limited to access routes, spoil placement, well sites, flowlines and appurtenant structures may be required by the Department of Wildlife and Fisheries.
- Compliance with the Atchafalaya Delta WMA regulations will be required unless otherwise specified by the Department of Wildlife and Fisheries.
- Compensatory mitigation will be required to offset unavoidable wetland impacts.
- Compensation and/or oyster seed ground surveys may be required by the Department for potential impacts to productive oyster seed grounds located within the management area.
- Removal of all structures, facilities and equipment will be required within 120 days of abandonment unless otherwise agreed to in writing by the Louisiana Department of Wildlife and Fisheries.
- No activities will be allowed during the hunting season unless approved by the Department.
- This tract is located within the emerging Atchafalaya Delta. No activities will be allowed on emergent islands, sub aerial mudflats or vegetated wetlands. Drilling will be restricted to passes and open water bays. The Louisiana Department of Wildlife and Fisheries (LDWF) shall have discretion to determine access routes. In the event that LDWF approves of dredging for access, LDWF shall have discretion to require hydraulic or spray dredging to reduce environmental impacts.
- Prior to submitting application for wetland permits to Federal and State permitting agencies the leaseholder shall coordinate project details with the Department of Wildlife and Fisheries. Contact person for the Department will be Mike Windham at (504)284-5268.

Additionally, the Department will require a minimum bonus of \$350.00 per acre and a minimum royalty of 25%.

NOTE: The acreage contained herein, being a portion of State Lease 335, 340 or 341, was subject to the litigation between Texaco, Inc. and the State of Louisiana which resulted in the Global Settlement Agreement compromise whereby this acreage was reassigned through various mesne conveyances to the successors of William T. Burton, the original lessee of said leases from the State, (hereinafter otherwise referred to as the "ORRO's) and approved by the State Mineral and Energy Board, becoming

effective April 25, 1994. Under separate agreement by and between the State and the ORRO's, certain obligations were to be met within a specified time frame or the ORRO's became obligated to release the reassigned acreage back to the State. The obligations were not met within the specified time frame and the State began securing the releases for the acreage contained herein. Due to the extremely large number of ORRO's, their nationwide and worldwide dispersal, the unreliability of available contact information and/or a present inability to obtain full, requisite cooperation, the State has, as yet, not secured releases from certain ORRO's representing approximately a .0258336 interest in this acreage. Accordingly, although the State is diligently pursuing the requisite releases affecting this acreage (the furnishing of which the ORRO's representing the stated decimal interest are obligated), nevertheless, a party obtaining a mineral lease from the State of Louisiana on the acreage contained herein shall do so with full knowledge that a complete release of all specific ORRO interest in this acreage has not as yet been secured and shall assume a business risk commensurate with the unsecured interest release.

NOTE: The above described tract may be in the vicinity of existing shell reefs where drilling and dredging operations must be conducted in strict conformity with the regulations adopted by the Louisiana Department of Wildlife and Fisheries and/or the U.S. Corps of Engineers, U.S. Army.

NOTE: The State of Louisiana does hereby reserve, and this lease shall be subject to, the imprescriptible right of surface use in the nature of a servitude in favor of the Department of Natural Resources, including its Offices and Commissions, for the sole purpose of implementing, constructing, servicing and maintaining approved coastal zone management and/or restoration projects. Utilization of any and all rights derived under this lease by the mineral lessee, its agents, successors or assigns, shall not interfere with nor hinder the reasonable surface use by the Department of Natural Resources, its Offices or Commissions, as herein above reserved.

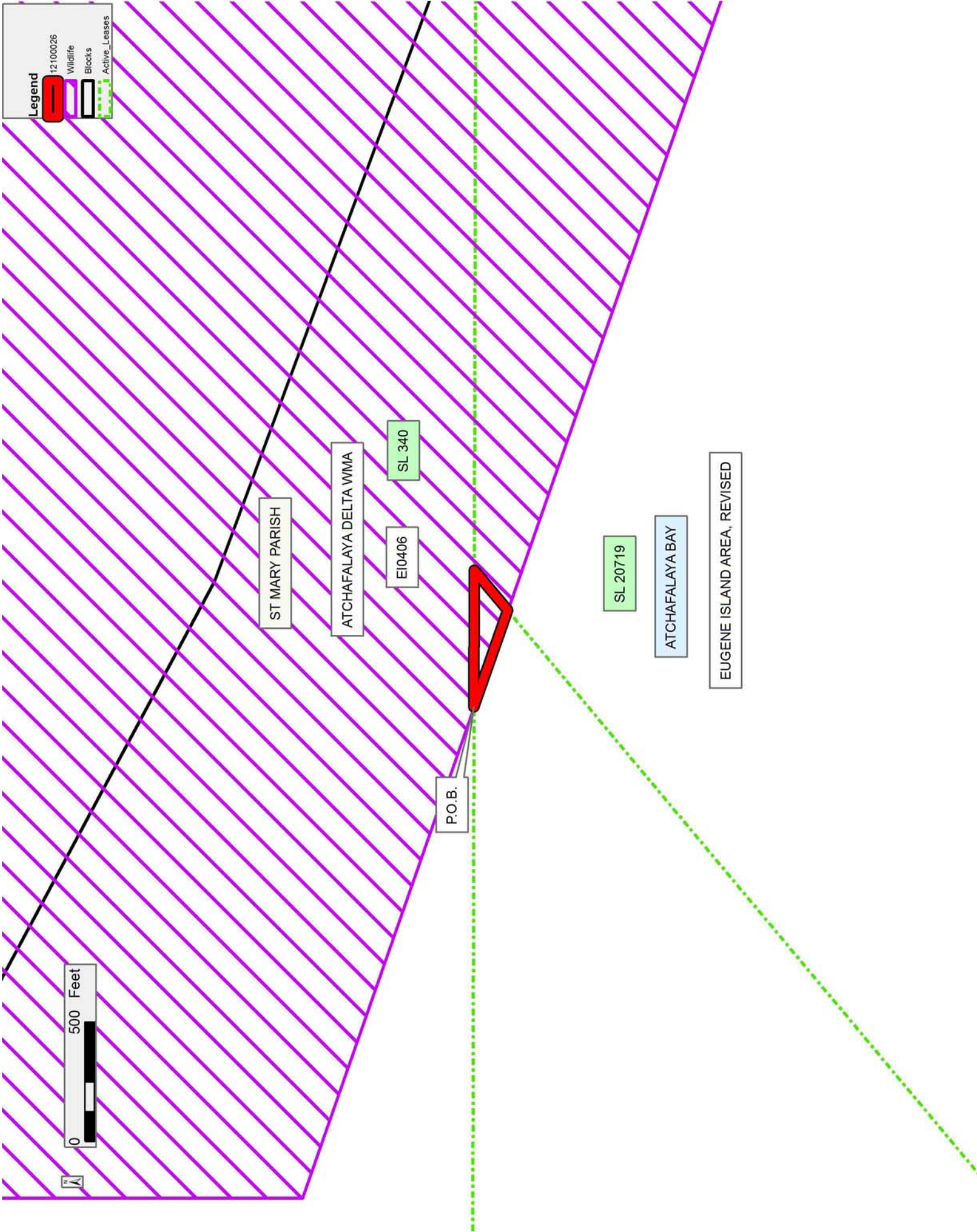
NOTE: This tract is located in an area designated by the Louisiana Legislature or the Wildlife and Fisheries Commission as a Public Oyster Seed Ground, Reservation, or area of Calcasieu or Sabine Lake. Proposed projects occurring in these areas will be evaluated on a case by case basis by Louisiana Department of Wildlife & Fisheries. Modifications to proposed project features including, but not limited to, access routes, well sites, flowlines, and appurtenant structures maybe required by the Louisiana Department of Wildlife and Fisheries. In addition, compensatory mitigation will be required to offset unavoidable habitat impacts.

Applicant: LESLIE M. COOPER

| Bidder | Cash Payment | Price/Acre | Rental | Oil | Gas | Other |
|--------|--------------|------------|--------|-----|-----|-------|
| | | | | | | |
| | | | | | | |
| | | | | | | |
| | | | | | | |

Legend

- 12100026
- Wildlife
- Blocks
- Active Leases



Office of Mineral Resources, Acres: .94 Tract Number: 42954