

TRACT 42961 - Caddo Parish, Louisiana

All of the lands now or formerly constituting the beds and bottoms of all water bodies of every nature and description as to which title is vested in the State of Louisiana, together with all islands arising therein and other lands formed by accretion or by reliction, where allowed by law, excepting tax adjudicated lands, and not presently under mineral lease on November 14, 2012, situated in Caddo Parish, Louisiana, and more particularly described as follows: Beginning at a point on the East boundary of State Lease No. 21000 having Coordinates of X = 1,580,743.76 and Y = 722,586.19; thence South 47 degrees 34 minutes 21 seconds East 7,005.76 feet to a point having Coordinates of X = 1,585,914.93 and Y = 717,859.70; thence South 250.00 feet to the Northwest corner of State Lease No. 19306 having Coordinates of X = 1,585,914.93 and Y = 717,609.70; thence continue South 1,619.82 feet along the West boundary of said State Lease No. 19306 to a point having Coordinates of X = 1,585,914.93 and Y = 715,989.88; thence North 69 degrees 41 minutes 04 seconds West 5,651.18 feet to the Southeast corner of said State Lease No. 21000 having Coordinates of X = 1,580,615.27 and Y = 717,951.91; thence North 01 degrees 35 minutes 17 seconds East 4,636.06 feet along the East boundary of said State Lease No. 21000 to the point of beginning, containing approximately **25 acres**, all as more particularly outlined on a plat on file in the Office of Mineral Resources, Department of Natural Resources. All bearings, distances and coordinates are based on Louisiana Coordinate System of 1927, (North or South Zone), where applicable.

NOTE: The above description of the Tract nominated for lease has been provided and corrected, where required, exclusively by the nomination party. Any mineral lease selected from this Tract and awarded by the Louisiana State Mineral and Energy Board shall be without warranty of any kind, either express, implied, or statutory, including, but not limited to, the implied warranties of merchantability and fitness for a particular purpose. Should the mineral lease awarded by the Louisiana State Mineral and Energy Board be subsequently modified, cancelled or abrogated due to the existence of conflicting leases, operating agreements, private claims or other future obligations or conditions which may affect all or any portion of the leased Tract, it shall not relieve the Lessee of the obligation to pay any bonus due thereon to the Louisiana State Mineral and Energy Board, nor shall the Louisiana State Mineral and Energy Board be obligated to refund any consideration paid by the Lessor prior to such modification, cancellation, or abrogation, including, but not limited to, bonuses, rentals and royalties.

Bidder	Cash Payment	Price/Acre	Rental	Oil	Gas	Other

--	--	--	--	--	--	--

Applicant: TACOMA ENERGY CORPORATION

Legend

12110007

Active_Leases

Counties

IMAGERY.DOQQ_2004_1M

0 3,000 Feet

CADDO PARISH

T19N - R14W

TWELVE MILE BAYOU

SL 19306

P.O.B.

SL 21000

T19N - R15W

TRACT 42962 - Acadia and Jefferson Davis Parishes, Louisiana

All of the lands now or formerly constituting the beds and bottoms of all water bodies of every nature and description as to which title is vested in the State of Louisiana, together with all islands arising therein and other lands formed by accretion or by reliction, where allowed by law, excepting tax adjudicated lands, and not presently under mineral lease on November 14, 2012, situated in Acadia and Jefferson Davis Parishes, Louisiana, and more particularly described as follows: Beginning at a point having Coordinates of X = 1,597,600.00 and Y = 642,730.00; thence East 6,000.00 feet to a point having Coordinates of X = 1,603,600.00 and Y = 642,730.00; thence South 8,000.00 feet to a point having Coordinates of X = 1,603,600.00 and Y = 634,730.00; thence West 6,000.00 feet to a point having Coordinates of X = 1,597,600.00 and Y = 634,730.00; thence North 8,000.00 feet to the point of beginning, containing approximately **22 acres**, all as more particularly outlined on a plat on file in the Office of Mineral Resources, Department of Natural Resources. All bearings, distances and coordinates are based on Louisiana Coordinate System of 1927, (North or South Zone), where applicable.

NOTE: The above description of the Tract nominated for lease has been provided and corrected, where required, exclusively by the nomination party. Any mineral lease selected from this Tract and awarded by the Louisiana State Mineral and Energy Board shall be without warranty of any kind, either express, implied, or statutory, including, but not limited to, the implied warranties of merchantability and fitness for a particular purpose. Should the mineral lease awarded by the Louisiana State Mineral and Energy Board be subsequently modified, cancelled or abrogated due to the existence of conflicting leases, operating agreements, private claims or other future obligations or conditions which may affect all or any portion of the leased Tract, it shall not relieve the Lessee of the obligation to pay any bonus due thereon to the Louisiana State Mineral and Energy Board, nor shall the Louisiana State Mineral and Energy Board be obligated to refund any consideration paid by the Lessor prior to such modification, cancellation, or abrogation, including, but not limited to, bonuses, rentals and royalties.

Applicant: HURON EXPLORATION, INC.

Bidder	Cash Payment	Price/Acre	Rental	Oil	Gas	Other

Legend

12110009



Active_Leases



IMAGERY.DOQQ_2008_1M_CIR

ACADIA PARISH

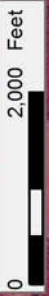
JEFFERSON DAVIS PARISH

BAYOU NEZPIQUE

T7S - R2W

T7S - R3W

P.O.B.



TRACT 42963 - Jefferson and St. Charles Parishes, Louisiana

All of the lands now or formerly constituting the beds and bottoms of all water bodies of every nature and description as to which title is vested in the State of Louisiana, together with all islands arising therein and other lands formed by accretion or by reliction, where allowed by law, excepting tax adjudicated lands, and not presently under mineral lease on November 14, 2012, situated in Jefferson and St. Charles Parishes, Louisiana, and more particularly described as follows: Beginning at a point having Coordinates of X = 2,350,327.00 and Y = 440,930.00; thence West 13,600.00 feet to point having Coordinates of X = 2,336,727.00 and Y = 440,930.00; thence North 12,700.00 feet to point having Coordinates of X = 2,336,727.00 and Y = 453,630.00; thence East 13,600.00 feet to point having Coordinates of X = 2,350,327.00 and Y = 453,630.00; thence South 12,700.00 feet to the point of beginning, **LESS AND EXCEPT** that portion, if any, that may lie within the boundaries of the Salvador Wildlife Management Area, containing approximately **84 acres**, all as more particularly outlined on a plat on file in the Office of Mineral Resources, Department of Natural Resources. All bearings, distances and coordinates are based on Louisiana Coordinate System of 1927, (North or South Zone), where applicable.

NOTE: The above description of the Tract nominated for lease has been provided and corrected, where required, exclusively by the nomination party. Any mineral lease selected from this Tract and awarded by the Louisiana State Mineral and Energy Board shall be without warranty of any kind, either express, implied, or statutory, including, but not limited to, the implied warranties of merchantability and fitness for a particular purpose. Should the mineral lease awarded by the Louisiana State Mineral and Energy Board be subsequently modified, cancelled or abrogated due to the existence of conflicting leases, operating agreements, private claims or other future obligations or conditions which may affect all or any portion of the leased Tract, it shall not relieve the Lessee of the obligation to pay any bonus due thereon to the Louisiana State Mineral and Energy Board, nor shall the Louisiana State Mineral and Energy Board be obligated to refund any consideration paid by the Lessor prior to such modification, cancellation, or abrogation, including, but not limited to, bonuses, rentals and royalties.

NOTE: The State of Louisiana does hereby reserve, and this lease shall be subject to, the imprescriptible right of surface use in the nature of a servitude in favor of the Department of Natural Resources, including its Offices and Commissions, for the sole purpose of implementing, constructing, servicing and maintaining approved coastal zone management and/or restoration projects. Utilization of any and all rights derived under this lease by the mineral lessee, its agents, successors or assigns, shall not interfere with nor hinder the reasonable surface use by the Department of Natural Resources, its Offices or Commissions, as herein above reserved.

Applicant: ROBERT A. SCHROEDER, INC.

Bidder	Cash Payment	Price/Acre	Rental	Oil	Gas	Other

Legend

- 12110002
- Wildlife
- Counties

IMAGERY.DOQQ_2008_1M_CIR

JEFFERSON PARISH

T13S - R22E

P.O.B.

BAYOU VERRET

0 3,000 Feet

ST CHARLES PARISH

T14S - R22E

SALVADOR WMA

TRACT 42964 - Jefferson and St. Charles Parishes, Louisiana

All of the lands now or formerly constituting the beds and bottoms of all water bodies of every nature and description as to which title is vested in the State of Louisiana, together with all islands arising therein and other lands formed by accretion or by reliction, where allowed by law, excepting tax adjudicated lands, and not presently under mineral lease on November 14, 2012, situated in Jefferson and St. Charles Parishes, Louisiana, and more particularly described as follows: Beginning at a point having Coordinates of X = 2,350,327.00 and Y = 440,930.00; thence East 13,350.00 feet to point having Coordinates of X = 2,363,377.00 and Y = 440,930.00; thence South 11,600.00 feet to point having Coordinates of X = 2,363,677.00 and Y = 429,330.00; thence West 13,350.00 feet to point having Coordinates of X = 2,350,327.00 and Y = 429,330.00; thence North 11,600.00 feet to the point of beginning, containing approximately **1,382 acres**, all as more particularly outlined on a plat on file in the Office of Mineral Resources, Department of Natural Resources. All bearings, distances and coordinates are based on Louisiana Coordinate System of 1927, (North or South Zone), where applicable.

NOTE: The above description of the Tract nominated for lease has been provided and corrected, where required, exclusively by the nomination party. Any mineral lease selected from this Tract and awarded by the Louisiana State Mineral and Energy Board shall be without warranty of any kind, either express, implied, or statutory, including, but not limited to, the implied warranties of merchantability and fitness for a particular purpose. Should the mineral lease awarded by the Louisiana State Mineral and Energy Board be subsequently modified, cancelled or abrogated due to the existence of conflicting leases, operating agreements, private claims or other future obligations or conditions which may affect all or any portion of the leased Tract, it shall not relieve the Lessee of the obligation to pay any bonus due thereon to the Louisiana State Mineral and Energy Board, nor shall the Louisiana State Mineral and Energy Board be obligated to refund any consideration paid by the Lessor prior to such modification, cancellation, or abrogation, including, but not limited to, bonuses, rentals and royalties.

NOTE: The State of Louisiana does hereby reserve, and this lease shall be subject to, the imprescriptible right of surface use in the nature of a servitude in favor of the Department of Natural Resources, including its Offices and Commissions, for the sole purpose of implementing, constructing, servicing and maintaining approved coastal zone management and/or restoration projects. Utilization of any and all rights derived under this lease by the mineral lessee, its agents, successors or assigns, shall not interfere with nor hinder the reasonable surface use by the Department of Natural Resources, its Offices or Commissions, as herein above reserved.

Applicant: ROBERT A. SCHROEDER, INC.

Bidder	Cash Payment	Price/Acre	Rental	Oil	Gas	Other

Legend

12110006

Counties

IMAGERY.DOQQ_2008_1M_CIR

0 3,000 Feet

JEFFERSON PARISH

T14S - R22E

P.O.B.

ST CHARLES PARISH

LAKE CATAOUATCHE

T14S - R23E

TRACT 42965 - Jefferson and St. Charles Parishes, Louisiana

All of the lands now or formerly constituting the beds and bottoms of all water bodies of every nature and description as to which title is vested in the State of Louisiana, together with all islands arising therein and other lands formed by accretion or by reliction, where allowed by law, excepting tax adjudicated lands, and not presently under mineral lease on November 14, 2012, situated in Jefferson and St. Charles Parishes, Louisiana, and more particularly described as follows: Beginning at a point having Coordinates of X = 2,350,327.00 and Y = 440,930.00; thence South 11,600.00 feet to point having Coordinates of X = 2,350,327.00 and Y = 429,330.00; thence West 13,600.00 feet to point having Coordinates of X = 2,336,727.00 and Y = 429,330.00; thence North 11,600.00 feet to point having Coordinates of X = 2,336,727.00 and Y = 440,930.00; thence East 13,600.00 feet to the point of beginning, **LESS AND EXCEPT** that portion, if any, that may lie within the boundaries of the Salvador Wildlife Management Area, and **LESS AND EXCEPT** any right, title, and interest in lands owned by and not under lease from the State of Louisiana, on behalf of the St. Charles and Jefferson Parish School Boards, situated in Section 16, Township 14 South, Range 22 East, St. Charles and Jefferson Parishes, Louisiana, contained within the above described tract, containing approximately **2,444 acres**, all as more particularly outlined on a plat on file in the Office of Mineral Resources, Department of Natural Resources. All bearings, distances and coordinates are based on Louisiana Coordinate System of 1927, (North or South Zone), where applicable.

NOTE: The above description of the Tract nominated for lease has been provided and corrected, where required, exclusively by the nomination party. Any mineral lease selected from this Tract and awarded by the Louisiana State Mineral and Energy Board shall be without warranty of any kind, either express, implied, or statutory, including, but not limited to, the implied warranties of merchantability and fitness for a particular purpose. Should the mineral lease awarded by the Louisiana State Mineral and Energy Board be subsequently modified, cancelled or abrogated due to the existence of conflicting leases, operating agreements, private claims or other future obligations or conditions which may affect all or any portion of the leased Tract, it shall not relieve the Lessee of the obligation to pay any bonus due thereon to the Louisiana State Mineral and Energy Board, nor shall the Louisiana State Mineral and Energy Board be obligated to refund any consideration paid by the Lessor prior to such modification, cancellation, or abrogation, including, but not limited to, bonuses, rentals and royalties.

NOTE: The State of Louisiana does hereby reserve, and this lease shall be subject to, the imprescriptible right of surface use in the nature of a servitude in favor of the Department of Natural Resources, including its Offices and Commissions, for the sole purpose of implementing, constructing, servicing and maintaining approved coastal zone management and/or restoration projects. Utilization of any and all rights derived under this lease by the mineral lessee, its agents, successors or assigns,

shall not interfere with nor hinder the reasonable surface use by the Department of Natural Resources, its Offices or Commissions, as herein above reserved.

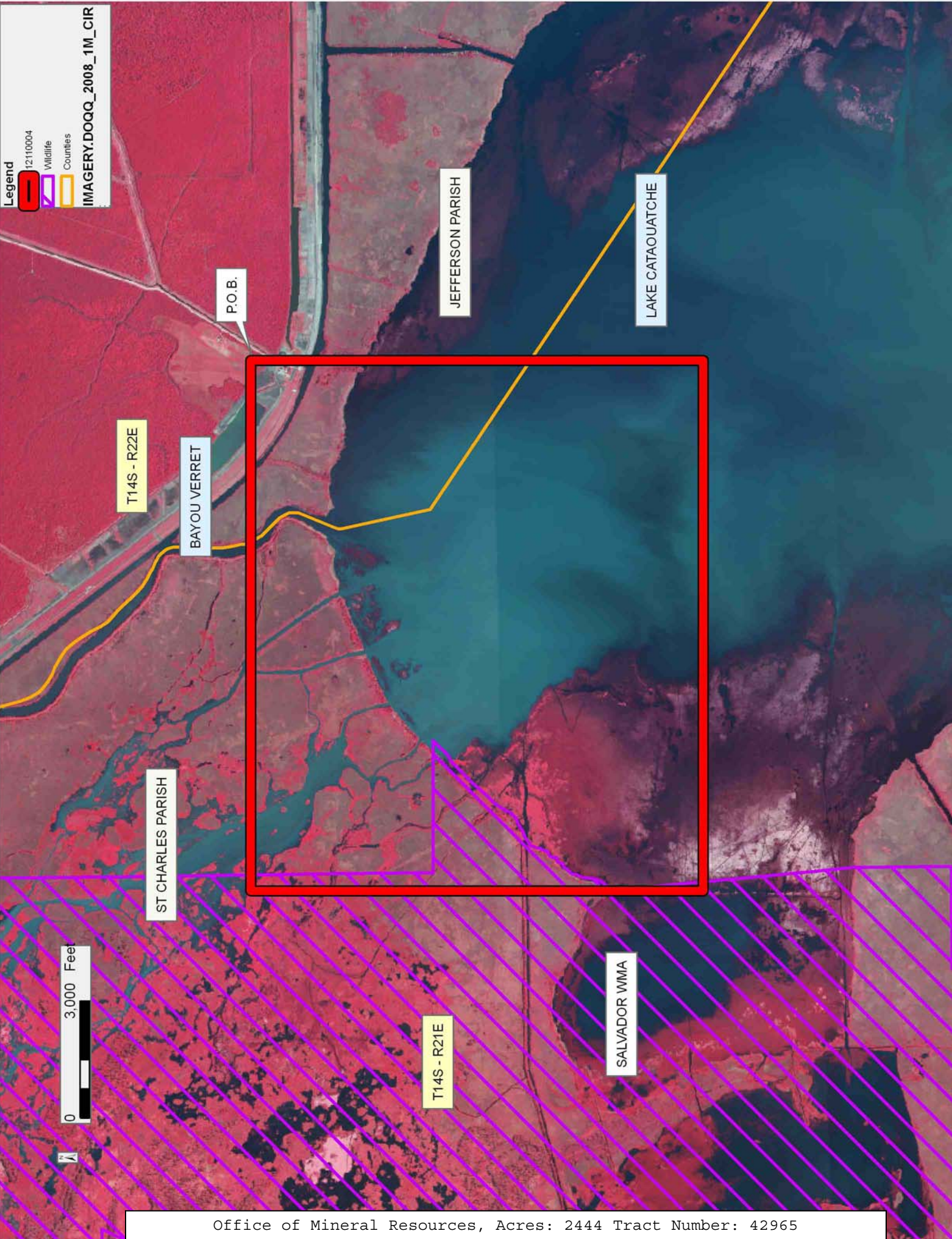
Applicant: ROBERT A. SCHROEDER, INC.

Bidder	Cash Payment	Price/Acre	Rental	Oil	Gas	Other

Legend

- 12110004
- Wildlife
- Counties

IMAGERY.DOQQ_2008_1M_CIR



TRACT 42966 - Lafourche and St. Charles Parishes, Louisiana

All of the lands now or formerly constituting the beds and bottoms of all water bodies of every nature and description as to which title is vested in the State of Louisiana, together with all islands arising therein and other lands formed by accretion or by reliction, where allowed by law, excepting tax adjudicated lands, and not presently under mineral lease on November 14, 2012, situated in Lafourche and St. Charles Parishes, Louisiana, and more particularly described as follows: Beginning at a point having Coordinates of X = 2,338,135.00 and Y = 389,103.31; thence North 87 degrees 42 minutes 11 seconds East 10,769.91 feet to a point having Coordinates of X = 2,348,896.26 and Y = 389,534.93; thence South 00 degrees 19 minutes 47 seconds East 16,235.20 feet to a point having Coordinates of X = 2,348,989.65 and Y = 373,300.00; thence West 3,479.66 feet to the Southeast corner of State Lease No. 19232 having Coordinates of X = 2,345,510.00 and Y = 373,300.00; thence North 7,622.61 feet along the East boundary of said State Lease No. 19232 to the Southeast corner of State Lease No. 19204 having Coordinates of X = 2,345,510.00 and Y = 380,922.61; thence continue North 1,023.13 feet along the East boundary of said State Lease No. 19204 to its Northeast corner also being the Southeast corner of State Lease No. 19203 having Coordinates of X = 2,345,510.00 and Y = 381,945.74; thence continue North 1,807.05 feet along the East boundary of said State Lease No. 19203 to its Northeast corner also a point on the East boundary of said State Lease No. 19232 having Coordinates of X = 2,345,510.00 and Y = 383,752.79; thence along the boundaries of said State Lease No. 19232 the following courses: North 1,355.21 feet to a point having Coordinates of X = 2,345,510.00 and Y = 385,108.00 and West 6,418.50 feet to the East corner of State Lease No. 19207 having Coordinates of X = 2,339,091.50 and Y = 385,108.00; thence continue West 956.50 feet along the North boundary of said State Lease No. 19207 to its Northwest corner also being the Northeast corner of State Lease No. 19199 having Coordinates of X = 2,338,135.00 and Y = 385,108.00; thence North 3,995.31 feet to the point of beginning, **LESS AND EXCEPT** all that portion of State Lease No. 20854 which lies entirely within the above described tract, being more fully described as follows: Commencing at a point being the point of beginning of the above described tract having coordinates of X = 2,338,135.00 and Y = 389,103.31; thence South 76 degrees 15 minutes 07 seconds East 5,936.91 feet to a point having Coordinates of X = 2,343,901.81 and Y = 387,692.38, being the point of beginning of said State Lease No. 20854; thence South 89 degrees 37 minutes 16 seconds East 2,964.40 feet to a point having Coordinates of X = 2,346,866.15 and Y = 387,672.78; thence South 00 degrees 12 minutes 31 seconds East 2,307.78 feet to a point having Coordinates of X = 2,346,874.54 and Y = 385,365.01; thence North 89 degrees 21 minutes 50 seconds West 2,963.11 feet to a point having Coordinates of X = 2,343,911.61 and Y = 385,397.91; thence North 00 degrees 14 minutes 41 seconds West 2,294.49 feet to a point of beginning, the nominated tract containing approximately **1819.12 acres**, all as more particularly outlined on a plat on file in the Office of Mineral Resources, Department of Natural Resources. All bearings, distances and coordinates are based on

Louisiana Coordinate System of 1927, (North or South Zone), where applicable.

NOTE: The above description of the Tract nominated for lease has been provided and corrected, where required, exclusively by the nomination party. Any mineral lease selected from this Tract and awarded by the Louisiana State Mineral and Energy Board shall be without warranty of any kind, either express, implied, or statutory, including, but not limited to, the implied warranties of merchantability and fitness for a particular purpose. Should the mineral lease awarded by the Louisiana State Mineral and Energy Board be subsequently modified, cancelled or abrogated due to the existence of conflicting leases, operating agreements, private claims or other future obligations or conditions which may affect all or any portion of the leased Tract, it shall not relieve the Lessee of the obligation to pay any bonus due thereon to the Louisiana State Mineral and Energy Board, nor shall the Louisiana State Mineral and Energy Board be obligated to refund any consideration paid by the Lessor prior to such modification, cancellation, or abrogation, including, but not limited to, bonuses, rentals and royalties.

NOTE: The State of Louisiana does hereby reserve, and this lease shall be subject to, the imprescriptible right of surface use in the nature of a servitude in favor of the Department of Natural Resources, including its Offices and Commissions, for the sole purpose of implementing, constructing, servicing and maintaining approved coastal zone management and/or restoration projects. Utilization of any and all rights derived under this lease by the mineral lessee, its agents, successors or assigns, shall not interfere with nor hinder the reasonable surface use by the Department of Natural Resources, its Offices or Commissions, as herein above reserved.

Applicant: DAY EXPLORATION

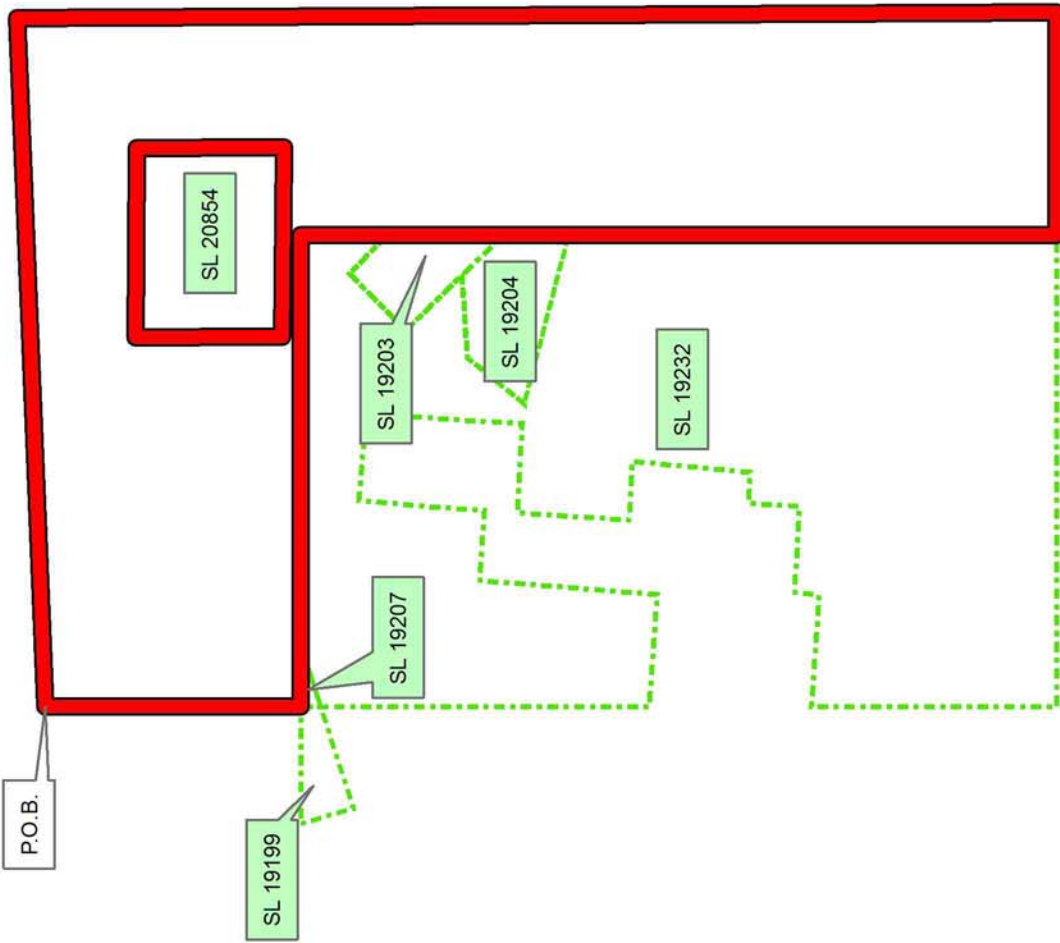
Bidder	Cash Payment	Price/Acre	Rental	Oil	Gas	Other

Legend

- 12/11/00/18
- Active_Leases

ST CHARLES PARISH

LAKE SALVADOR



TRACT 42967 - St. Charles Parish, Louisiana

All of the lands now or formerly constituting the beds and bottoms of all water bodies of every nature and description as to which title is vested in the State of Louisiana, together with all islands arising therein and other lands formed by accretion or by reliction, where allowed by law, excepting tax adjudicated lands, and not presently under mineral lease on November 14, 2012, situated in St. Charles Parish, Louisiana, and more particularly described as follows: Beginning at a point having Coordinates of X = 2,327,273.03 and Y = 388,667.65; thence North 87 degrees 42 minutes 11 seconds East 10,870.71 feet to a point having Coordinates of X = 2,338,135.00 and Y = 389,103.31; thence South 3,995.31 feet to the Northwest corner of State Lease No. 19207, also being the Northeast corner of State Lease No. 19199 having Coordinates of X = 2,338,135.00 and Y = 385,108.00; thence along the boundaries of said State Lease No. 19199 the following courses: West 1,832.35 feet to a point having Coordinates of X = 2,336,302.65 and Y = 385,108.00, South 16 degrees 44 minutes 09 seconds East 858.03 feet to a point having Coordinates of X = 2,336,549.73 and Y = 384,286.31, and North 72 degrees 05 minutes 07 seconds East 1,666.05 feet to its Southeast corner having Coordinates of X = 2,338,135.00 and Y = 384,798.79, said point also being a point on the Western boundary of State Lease No. 19232; thence South 1,400.37 feet along the Western boundary of said State Lease No. 19232 to a point being the Northeast corner of State Lease No. 20624 having Coordinates of X = 2,338,135.00 and Y = 383,398.42; thence along the boundaries of said State Lease No. 20624 the following courses: South 80 degrees 34 minutes 29 seconds West 2,164.22 feet to a point having Coordinates of X = 2,336,000.00 and Y = 383,044.00, South 12 degrees 33 minutes 41 seconds West 2,299.03 feet to a point having Coordinates of X = 2,335,500.00 and Y = 380,800.00, South 73 degrees 04 minutes 21 seconds East 2,404.16 feet to a point having Coordinates of X = 2,337,800.00 and Y = 380,100.00, and North 88 degrees 53 minutes 16 seconds East 335.06 feet to its Southeast corner, also being a point on the Western boundary of said State Lease No. 19232 having Coordinates of X = 2,338,135.00 and Y = 380,106.51; thence South 441.28 feet along the Western boundary of said State Lease No. 19232 to a point being the Northwest corner of State Lease No. 19206, also being the Northeast corner of State Lease No. 19200 having Coordinates of X = 2,338,135.00 and Y = 379,665.23; thence along the boundaries of said State Lease No. 19200 the following courses: North 85 degrees 57 minutes 27 seconds West 236.05 feet to a point having Coordinates of X = 2,337,899.54 and Y = 379,681.87, and South 03 degrees 56 minutes 50 seconds West 1,134.56 feet to a point being the Northeast corner of State Lease No. 20851 having Coordinates of X = 2,337,821.44 and Y = 378,550.00; thence West 2,623.62 feet along the North boundary of said State Lease No. 20851 to its Northwest corner also being a point on the East boundary of State Lease No. 19201 having Coordinates of X = 2,335,197.82 and Y = 378,550.00; thence along the boundaries of said State Lease No. 19201 the following courses: North 20 degrees 42 minutes 16 seconds West 1,880.44 feet to a point having Coordinates of X = 2,334,533.00 and Y = 380,309.00, and South 71 degrees 21 minutes 39 seconds West 1,720.23 feet to a point on the East boundary of State Lease

No. 20852 having Coordinates of X = 2,332,903.00 and Y = 379,759.20; thence North 743.80 feet to a point having Coordinates of X = 2,332,903.00 and Y = 380,503.00, and West 1,838.95 feet to a point on the East boundary of State Lease No. 20626 having Coordinates of X = 2,331,064.05 and Y = 380,503.00; thence North 00 degrees 52 minutes 42 seconds West 2,820.39 feet along the East boundary of said State Lease No. 20626 to its Northeast corner, also being a point on the South boundary of State Lease No. 20853 having Coordinates of X = 2,331,020.82 and Y = 383,323.06; thence along the boundaries of said State Lease No. 20853 the following courses: North 80 degrees 42 minutes 32 seconds East 845.27 feet to a point having Coordinates of X = 2,331,855.00 and Y = 383,459.53, North 1,906.47 feet to a point having Coordinates of X = 2,331,855.00 and Y = 385,366.00, West 2,213.00 feet to a point having Coordinates of X = 2,329,642.00 and Y = 385,366.00, and South 2,268.51 feet to its Southwest corner, also being a point on the North boundary of said State Lease No. 20626 having Coordinates of X = 2,329,642.00 and Y = 383,097.49; thence South 80 degrees 42 minutes 32 seconds West 2,400.47 feet to a point having Coordinates of X = 2,327,273.03 and Y = 382,709.93; thence North 5,957.72 feet to the point of beginning containing, approximately **1746.75 acres**, all as more particularly outlined on a plat on file in the Office of Mineral Resources, Department of Natural Resources. All bearings, distances and coordinates are based on Louisiana Coordinate System of 1927, (North or South Zone), where applicable.

NOTE: The above description of the Tract nominated for lease has been provided and corrected, where required, exclusively by the nomination party. Any mineral lease selected from this Tract and awarded by the Louisiana State Mineral and Energy Board shall be without warranty of any kind, either express, implied, or statutory, including, but not limited to, the implied warranties of merchantability and fitness for a particular purpose. Should the mineral lease awarded by the Louisiana State Mineral and Energy Board be subsequently modified, cancelled or abrogated due to the existence of conflicting leases, operating agreements, private claims or other future obligations or conditions which may affect all or any portion of the leased Tract, it shall not relieve the Lessee of the obligation to pay any bonus due thereon to the Louisiana State Mineral and Energy Board, nor shall the Louisiana State Mineral and Energy Board be obligated to refund any consideration paid by the Lessor prior to such modification, cancellation, or abrogation, including, but not limited to, bonuses, rentals and royalties.

NOTE: The State of Louisiana does hereby reserve, and this lease shall be subject to, the imprescriptible right of surface use in the nature of a servitude in favor of the Department of Natural Resources, including its Offices and Commissions, for the sole purpose of implementing, constructing, servicing and maintaining approved coastal zone management and/or restoration projects. Utilization of any and all rights derived under this lease by the mineral lessee, its agents, successors or assigns, shall not interfere with nor hinder the reasonable surface use by the

Department of Natural Resources, its Offices or Commissions, as herein above reserved.

Applicant: DAY EXPLORATION

Bidder	Cash Payment	Price/Acre	Rental	Oil	Gas	Other

Legend

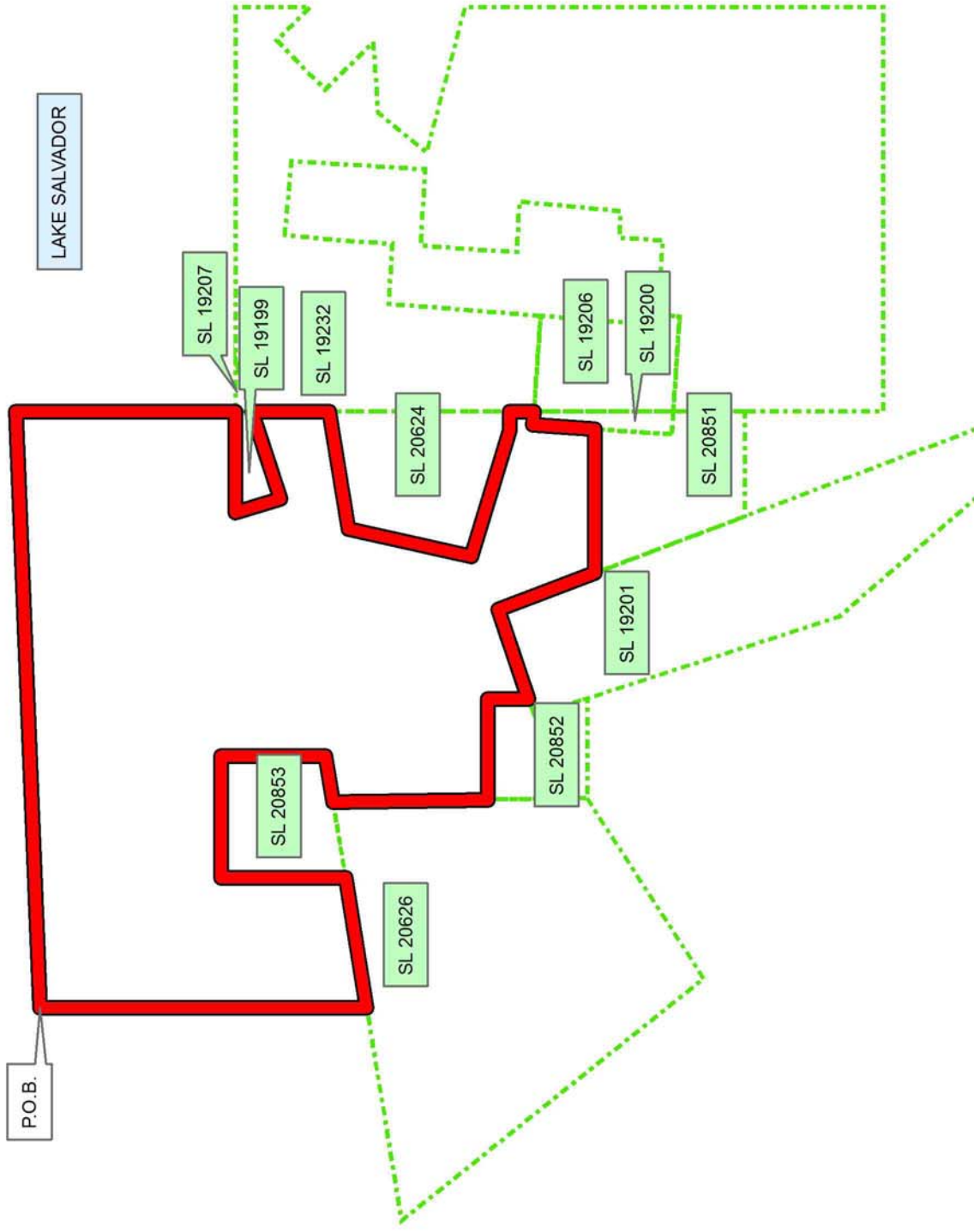
12/10/19

Active Leases



ST CHARLES PARISH

LAKE SALVADOR



TRACT 42968 - St. Charles Parish, Louisiana

All of the lands now or formerly constituting the beds and bottoms of all water bodies of every nature and description as to which title is vested in the State of Louisiana, together with all islands arising therein and other lands formed by accretion or by reliction, where allowed by law, excepting tax adjudicated lands, and not presently under mineral lease on November 14, 2012, situated in St. Charles Parish, Louisiana, and more particularly described as follows: Beginning at a point having Coordinates of X = 2,320,876.93 and Y = 388,411.11; thence North 87 degrees 42 minutes 11 seconds East 6,401.24 feet to a point having Coordinates of X = 2,327,273.03 and Y = 388,667.65; thence South 5,957.72 feet to a point on the North boundary of State Lease No. 20626 having Coordinates of X = 2,327,273.03 and Y = 382,709.93; thence along the boundaries of said State Lease No. 20626 the following courses: South 80 degrees 42 minutes 32 seconds West 3,936.42 feet to a point having Coordinates of X = 2,323,388.25 and Y = 382,074.39 and South 38 degrees 43 minutes 38 seconds East 652.05 feet to the Northeast corner of State Lease No. 20643 having Coordinates of X = 2,323,796.18 and Y = 381,565.71; thence North 89 degrees 47 minutes 42 seconds West 10.68 feet along the North boundary of said State Lease No. 20643 to its Northwest corner also being the Northeast corner of State Lease No. 20850 having Coordinates of X = 2,323,785.50 and Y = 318,565.75; thence along the boundaries of said State Lease No. 20850 the following courses: West 7,081.24 feet to a point having Coordinates of X = 2,316,704.26 and Y = 381,565.75 and South 1,126.89 feet to its Southwest corner and the Northwest corner of State Lease No. 19774 having Coordinates of X = 2,316,704.26 and Y = 380,438.86; thence continue South 141.64 feet along the West boundary of said State Lease No. 19774 to the Northeast corner of State Lease No. 20937 having Coordinates of X = 2,316,704.26 and Y = 380,297.22; thence West 1,452.00 feet along the North boundary of said State Lease No. 20937 to its Northwest corner also being the Northeast corner of State Lease No. 20936 having Coordinates of X = 2,315,252.26 and Y = 380,297.22; thence continue West 2,294.63 feet along the North boundary of said State Lease No. 20936 to its Northwest corner having Coordinates of X = 2,312,957.63 and Y = 380,297.22; thence North 3,801.32 feet to a point having Coordinates of X = 2,312,957.63 and Y = 384,098.54; thence East 79.61 feet to a point having Coordinates of X = 2,313,037.23 and Y = 384,098.54; thence North 61 degrees 11 minutes 06 seconds East 8,947.58 feet to the point of beginning, containing approximately **1910.30 acres**, all as more particularly outlined on a plat on file in the Office of Mineral Resources, Department of Natural Resources. All bearings, distances and coordinates are based on Louisiana Coordinate System of 1927, (North or South Zone), where applicable.

NOTE: The above description of the Tract nominated for lease has been provided and corrected, where required, exclusively by the nomination party. Any mineral lease selected from this Tract and awarded by the Louisiana State Mineral and Energy Board shall be without warranty of any kind, either express, implied, or statutory, including, but not limited

to, the implied warranties of merchantability and fitness for a particular purpose. Should the mineral lease awarded by the Louisiana State Mineral and Energy Board be subsequently modified, cancelled or abrogated due to the existence of conflicting leases, operating agreements, private claims or other future obligations or conditions which may affect all or any portion of the leased Tract, it shall not relieve the Lessee of the obligation to pay any bonus due thereon to the Louisiana State Mineral and Energy Board, nor shall the Louisiana State Mineral and Energy Board be obligated to refund any consideration paid by the Lessor prior to such modification, cancellation, or abrogation, including, but not limited to, bonuses, rentals and royalties.

NOTE: The State of Louisiana does hereby reserve, and this lease shall be subject to, the imprescriptible right of surface use in the nature of a servitude in favor of the Department of Natural Resources, including its Offices and Commissions, for the sole purpose of implementing, constructing, servicing and maintaining approved coastal zone management and/or restoration projects. Utilization of any and all rights derived under this lease by the mineral lessee, its agents, successors or assigns, shall not interfere with nor hinder the reasonable surface use by the Department of Natural Resources, its Offices or Commissions, as herein above reserved.

Applicant: DAY EXPLORATION

Bidder	Cash Payment	Price/Acre	Rental	Oil	Gas	Other

Legend

- 12:110020
- Active_Leases



ST CHARLES PARISH

LAKE SALVADOR

P.O.B.

T15S - R21E

T16S - R21E

SL 20626

SL 20643

SL 20850

SL 20937

SL 20936

TRACT 42969 - Lafourche and St. Charles Parishes, Louisiana

All of the lands now or formerly constituting the beds and bottoms of all water bodies of every nature and description as to which title is vested in the State of Louisiana, together with all islands arising therein and other lands formed by accretion or by reliction, where allowed by law, excepting tax adjudicated lands, and not presently under mineral lease on November 14, 2012, situated in Lafourche and St. Charles Parishes, Louisiana, and more particularly described as follows: Beginning at a point having Coordinates of X = 2,307,058.46 and Y = 384,098.54; thence East 5,899.17 feet to a point having Coordinates of X = 2,312,957.63 and Y = 384,098.54; thence South 3,801.32 feet to the Northwest corner of State Lease No. 20936 having Coordinates of X = 2,312,957.63 and Y = 380,297.22; thence continue South 9,415.22 feet along the West boundary of said State Lease No. 20936 to its Southwest corner also being the Northwest corner of State Lease No. 20938 having Coordinates of X = 2,312,957.63 and Y = 370,882.00; thence continue South 4,055.58 feet along the West boundary of said State Lease No. 20938 to its Southwest corner having Coordinates of X = 2,312,957.63 and Y = 366,826.42; thence West 5,899.17 feet to a point having Coordinates of X = 2,307,058.46 and Y = 366,826.42; thence North 17,272.12 feet to the point of beginning, containing approximately **619 acres**, all as more particularly outlined on a plat on file in the Office of Mineral Resources, Department of Natural Resources. All bearings, distances and coordinates are based on Louisiana Coordinate System of 1927, (North or South Zone), where applicable.

NOTE: The above description of the Tract nominated for lease has been provided and corrected, where required, exclusively by the nomination party. Any mineral lease selected from this Tract and awarded by the Louisiana State Mineral and Energy Board shall be without warranty of any kind, either express, implied, or statutory, including, but not limited to, the implied warranties of merchantability and fitness for a particular purpose. Should the mineral lease awarded by the Louisiana State Mineral and Energy Board be subsequently modified, cancelled or abrogated due to the existence of conflicting leases, operating agreements, private claims or other future obligations or conditions which may affect all or any portion of the leased Tract, it shall not relieve the Lessee of the obligation to pay any bonus due thereon to the Louisiana State Mineral and Energy Board, nor shall the Louisiana State Mineral and Energy Board be obligated to refund any consideration paid by the Lessor prior to such modification, cancellation, or abrogation, including, but not limited to, bonuses, rentals and royalties.

NOTE: The State of Louisiana does hereby reserve, and this lease shall be subject to, the imprescriptible right of surface use in the nature of a servitude in favor of the Department of Natural Resources, including its Offices and Commissions, for the sole purpose of implementing, constructing, servicing and maintaining approved coastal zone management and/or restoration projects. Utilization of any and all rights derived under this lease by the mineral lessee, its agents, successors or assigns,

shall not interfere with nor hinder the reasonable surface use by the Department of Natural Resources, its Offices or Commissions, as herein above reserved.

NOTE: The above Tract is located upon a restricted scenic river and all operations in this area must be conducted in strict conformity with the regulations of the Corps of Engineers, U.S. Army.

Applicant: DAY EXPLORATION

Bidder	Cash Payment	Price/Acre	Rental	Oil	Gas	Other

Legend
12110021
Active_Leases
Counties

IMAGERY.DOQQ_2008_1M_CIR

LAKE SALVADOR

ST CHARLES PARISH

BAYOU DES ALLEMANDS

SL 20936

SL 20938

P.O.B.

LAFOURCHE PARISH

T16S - R21E

T16S - R20E

0 3,000 Feet



TRACT 42970 - Lafourche and St. Charles Parishes, Louisiana

All of the lands now or formerly constituting the beds and bottoms of all water bodies of every nature and description as to which title is vested in the State of Louisiana, together with all islands arising therein and other lands formed by accretion or by reliction, where allowed by law, excepting tax adjudicated lands, and not presently under mineral lease on November 14, 2012, situated in Lafourche and St. Charles Parishes, Louisiana, and more particularly described as follows: Beginning at a point on the South boundary of State Lease No. 20643 having Coordinates of X = 2,323,702.25 and Y = 379,805.50; thence along the boundary of said State Lease No. 20643 the following courses: South 88 degrees 58 minutes 49 seconds East 1,348.71 feet to a point having Coordinates of X = 2,325,050.75 and Y = 379,781.50 and North 00 degrees 01 minutes 27 seconds West 219.89 feet to a point on the West boundary of State Lease No. 20626 having Coordinates of X = 2,325,050.66 and Y = 380,001.39; thence South 38 degrees 43 minutes 38 seconds East 4,399.28 feet along the West boundary of said State Lease No. 20626 to its Southern tip also being the Northwest corner of State Lease No. 20856 having Coordinates of X = 2,327,802.91 and Y = 376,569.37; thence along the boundaries of said State Lease No. 20856 the following courses: South 2,436.37 feet to a point having Coordinates of X = 2,327,802.91 and Y = 374,133.00 and East 6,588.01 feet to its Southeast corner also being a point on the West boundary of State Lease No. 19201 having Coordinates of X = 2,334,390.92 and Y = 374,133.00; thence along the boundaries of said State Lease No. 19201 the following courses: South 17 degrees 57 minutes 47 seconds East 29.43 feet to a point having Coordinates of X = 2,334,400.00 and Y = 374,105.00 and South 40 degrees 57 minutes 13 seconds East 1,065.89 feet to the Northeast corner of State Lease No. 20859 having Coordinates of X = 2,335,098.64 and Y = 373,300.00; thence along the boundaries of said State Lease No. 20859 the following courses: West 4,065.98 feet to a point having Coordinates of X = 2,331,032.65 and Y = 373,300.00 and South 16 degrees 14 minutes 30 seconds West 1,328.73 feet to its Southwest corner also being the Northeast corner of State Lease No. 20861 having Coordinates of X = 2,330,661.02 and Y = 372,024.30; thence South 59 degrees 05 minutes 57 seconds West 2,050.81 feet along the North boundary of said State Lease No. 20861 to its Northwest corner also being the Northeast corner of State Lease No. 20860 having Coordinates of X = 2,328,901.30 and Y = 370,971.10; thence South 63 degrees 36 minutes 11 seconds West 381.03 feet along the North boundary of said State Lease No. 20860 to its Northwest corner also being the Northeast corner of State Lease No. 20858 having Coordinates of X = 2,328,560.00 and Y = 370,801.70; thence West 1,395.30 feet along the North boundary of said State Lease No. 20858 to a point on the East boundary of State Lease No. 20877 having Coordinates of X = 2,327,164.70 and Y = 370,801.70; thence along the boundaries of said State Lease No. 20877 the following courses: North 1,651.67 feet to a point having Coordinates of X = 2,327,164.70 and Y = 372,453.37, West 2,755.70 feet to a point having Coordinates of X = 2,324,409.00 and Y = 372,453.37, North 2,157.63 feet to a point having Coordinates of X = 2,324,409.00 and Y = 374,611.00 and West 571.00 feet to a point on the East boundary of State Lease No. 20627

having Coordinates of X = 2,323,838.00 and Y = 374,611.00; thence North 1,199.00 feet along the East boundary of said State Lease No. 20627 to its Northeast corner and the Southeast corner of State Lease No. 20645 having Coordinates of X = 2,323,838.00 and Y = 375,810.00; thence continue North 327.43 feet along the East boundary of said State Lease No. 20645 to a point on the West boundary of said State Lease No. 20643 having Coordinates of X = 2,323,838.00 and Y = 376,137.43; thence along the boundaries of said State Lease No. 20643 the following courses: South 26 degrees 48 minutes 38 seconds East 138.01 feet to a point having Coordinates of X = 2,323,900.25 and Y = 376,014.25, North 87 degrees 53 minutes 59 seconds East 1,146.02 feet to a point having Coordinates of X = 2,325,045.50 and Y = 376,056.25, North 04 degrees 49 minutes 20 seconds West 365.79 feet to a point having Coordinates of X = 2,325,014.75 and Y = 376,420.75, North 30 degrees 06 minutes 23 seconds West 2,492.50 feet to a point having Coordinates of X = 2,323,764.50 and Y = 378,577.00 and North 02 degrees 54 minutes 03 seconds West 1,230.08 feet to the point of beginning, containing approximately **807.04 acres**, all as more particularly outlined on a plat on file in the Office of Mineral Resources, Department of Natural Resources. All bearings, distances and coordinates are based on Louisiana Coordinate System of 1927, (North or South Zone), where applicable.

NOTE: The above description of the Tract nominated for lease has been provided and corrected, where required, exclusively by the nomination party. Any mineral lease selected from this Tract and awarded by the Louisiana State Mineral and Energy Board shall be without warranty of any kind, either express, implied, or statutory, including, but not limited to, the implied warranties of merchantability and fitness for a particular purpose. Should the mineral lease awarded by the Louisiana State Mineral and Energy Board be subsequently modified, cancelled or abrogated due to the existence of conflicting leases, operating agreements, private claims or other future obligations or conditions which may affect all or any portion of the leased Tract, it shall not relieve the Lessee of the obligation to pay any bonus due thereon to the Louisiana State Mineral and Energy Board, nor shall the Louisiana State Mineral and Energy Board be obligated to refund any consideration paid by the Lessor prior to such modification, cancellation, or abrogation, including, but not limited to, bonuses, rentals and royalties.

NOTE: The State of Louisiana does hereby reserve, and this lease shall be subject to, the imprescriptible right of surface use in the nature of a servitude in favor of the Department of Natural Resources, including its Offices and Commissions, for the sole purpose of implementing, constructing, servicing and maintaining approved coastal zone management and/or restoration projects. Utilization of any and all rights derived under this lease by the mineral lessee, its agents, successors or assigns, shall not interfere with nor hinder the reasonable surface use by the Department of Natural Resources, its Offices or Commissions, as herein above reserved.

Applicant: DAY EXPLORATION

Bidder	Cash Payment	Price/Acre	Rental	Oil	Gas	Other

Legend

- 12/11/0023
- Active_Leases
- Counties

