

TRACT 42971 - Lafourche and St. Charles Parishes, Louisiana

All of the lands now or formerly constituting the beds and bottoms of all water bodies of every nature and description as to which title is vested in the State of Louisiana, together with all islands arising therein and other lands formed by accretion or by reliction, where allowed by law, excepting tax adjudicated lands, and not presently under mineral lease on November 14, 2012, situated in Lafourche and St. Charles Parishes, Louisiana, and more particularly described as follows: Beginning at a point being the Southwest corner of State Lease No. 19201 having Coordinates of X = 2,337,093.00 and Y = 371,002.00; thence along the boundaries of said State Lease No. 19201 the following courses: North 73 degrees 38 minutes 34 seconds East 898.36 feet to a point having Coordinates of X = 2,337,955.00 and Y = 371,255.00 and North 20 degrees 42 minutes 16 seconds West 4,884.45 feet to the Southwest corner of State Lease No. 20851 having Coordinates of X = 2,336,228.13 and Y = 375,824.00; thence East 1,906.87 feet along the South boundary of said State Lease No. 20851 to its Southeast corner and a point on the West boundary of State Lease No. 19232 having Coordinates of X = 2,338,135.00 and Y = 375,824.00; thence along the boundaries of said State Lease No. 19232 the following courses: South 2,524.00 feet to a point having Coordinates of X = 2,338,135.00 and Y = 373,300.00 and East 7,375.00 feet to its Southeast corner having Coordinates of X = 2,345,510.00 and Y = 373,300.00; thence continue East 3,479.66 feet to a point having Coordinates of X = 2,348,989.65 and Y = 373,300.00; thence South 7,300.00 feet to a point having Coordinates of X = 2,348,989.65 and Y = 366,000.00; thence West 2,789.65 feet to the Southeast corner of State Lease No. 20862 having Coordinates of X = 2,346,200.00 and Y = 366,000.00; thence along the boundaries of said State Lease No. 20862 the following courses: North 3,300.00 feet to a point having Coordinates of X = 2,346,200.00 and Y = 369,300.00, West 4,400.00 feet to a point having Coordinates of X = 2,341,800.00 and Y = 369,300.00 and South 3,300.00 feet to its Southwest corner having Coordinates of X = 2,341,800.00 and Y = 366,000.00; thence West 6,408.33 feet to a point having Coordinates of X = 2,335,391.67 and Y = 366,000.00; thence North 5,598.98 feet to a point on the South boundary of State Lease No. 20859 having Coordinates of X = 2,335,391.67 and Y = 371,598.98; thence North 55 degrees 23 minutes 04 seconds East 899.12 feet along the South boundary of said State Lease No. 20859 to its Southeast corner also being a point on the West boundary said State Lease No. 19201 having Coordinates of X = 2,336,131.63 and Y = 372,109.74; thence South 40 degrees 57 minutes 13 seconds East 1,466.74 feet along the West boundary of said State Lease No. 19201 to the point of beginning, containing approximately **1940.46 acres**, all as more particularly outlined on a plat on file in the Office of Mineral Resources, Department of Natural Resources. All bearings, distances and coordinates are based on Louisiana Coordinate System of 1927, (North or South Zone), where applicable.

NOTE: The above description of the Tract nominated for lease has been provided and corrected, where required, exclusively by the nomination party. Any mineral lease selected from this Tract and awarded by the

Louisiana State Mineral and Energy Board shall be without warranty of any kind, either express, implied, or statutory, including, but not limited to, the implied warranties of merchantability and fitness for a particular purpose. Should the mineral lease awarded by the Louisiana State Mineral and Energy Board be subsequently modified, cancelled or abrogated due to the existence of conflicting leases, operating agreements, private claims or other future obligations or conditions which may affect all or any portion of the leased Tract, it shall not relieve the Lessee of the obligation to pay any bonus due thereon to the Louisiana State Mineral and Energy Board, nor shall the Louisiana State Mineral and Energy Board be obligated to refund any consideration paid by the Lessor prior to such modification, cancellation, or abrogation, including, but not limited to, bonuses, rentals and royalties.

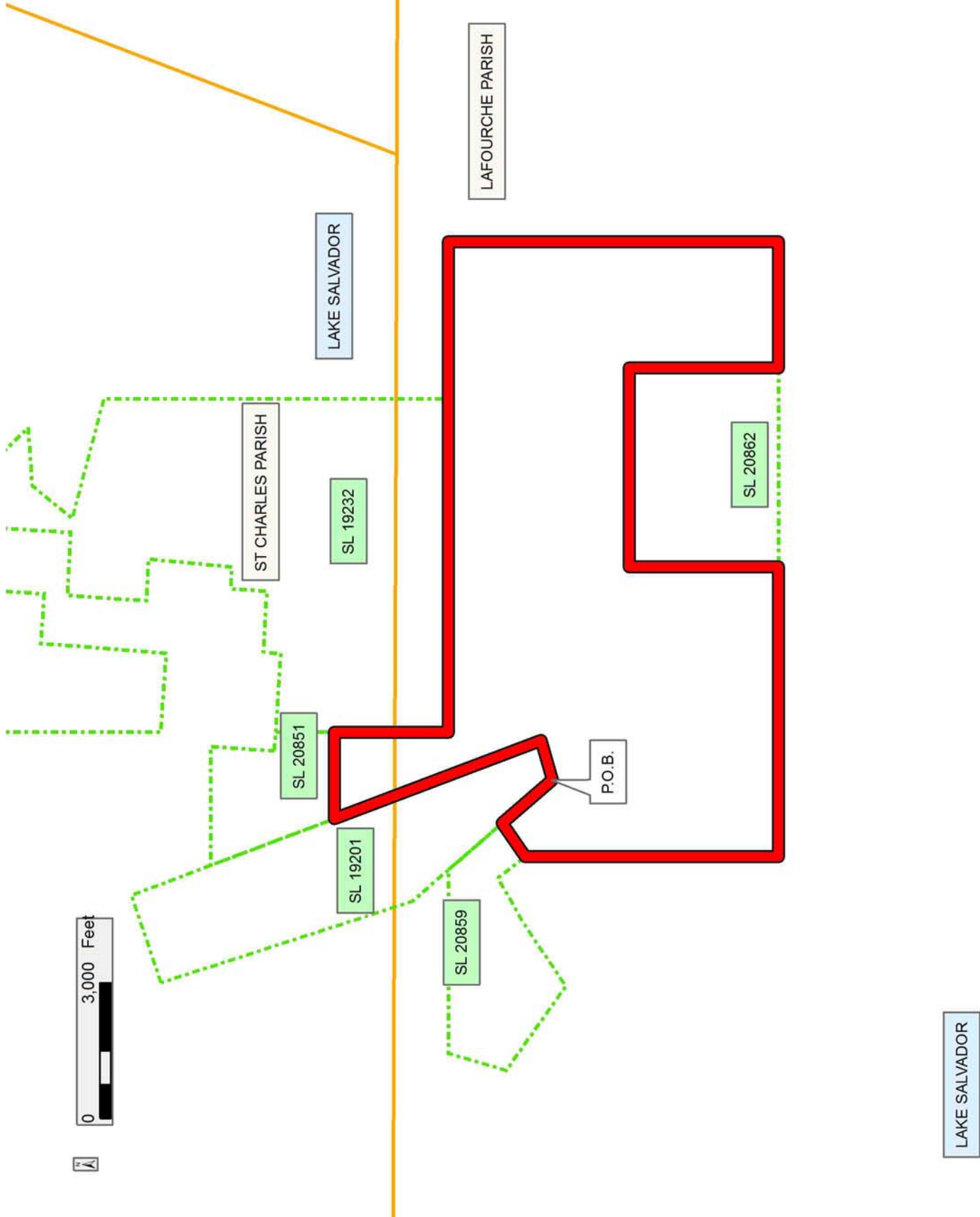
NOTE: The State of Louisiana does hereby reserve, and this lease shall be subject to, the imprescriptible right of surface use in the nature of a servitude in favor of the Department of Natural Resources, including its Offices and Commissions, for the sole purpose of implementing, constructing, servicing and maintaining approved coastal zone management and/or restoration projects. Utilization of any and all rights derived under this lease by the mineral lessee, its agents, successors or assigns, shall not interfere with nor hinder the reasonable surface use by the Department of Natural Resources, its Offices or Commissions, as herein above reserved.

Applicant: DAY EXPLORATION

Bidder	Cash Payment	Price/Acre	Rental	Oil	Gas	Other

Legend

- 12:110026
- Active_Leases
- Counties



TRACT 42972 - Lafourche and St. Charles Parishes, Louisiana

All of the lands now or formerly constituting the beds and bottoms of all water bodies of every nature and description as to which title is vested in the State of Louisiana, together with all islands arising therein and other lands formed by accretion or by reliction, where allowed by law, excepting tax adjudicated lands, and not presently under mineral lease on November 14, 2012, situated in Lafourche and St. Charles Parishes, Louisiana, and more particularly described as follows: Beginning at a point on the East boundary of State Lease No. 20936 also being a point on the South boundary of State Lease No. 20644 having Coordinates of X = 2,316,950.00 and Y = 375,810.00; thence East 3,640.00 feet along the South boundary of said State Lease No. 20644 to its Southeast corner, also being a point on the Southwest corner of State Lease No. 20645 and the Northwest corner of State Lease No. 20627 having Coordinates of X = 2,320,590.00 and Y = 375,810.00; thence South 3,356.63 feet along the West boundary of said State Lease No. 20627 to its Southwest corner also being a point on the North boundary of State Lease No. 20938 having Coordinates of X = 2,320,590.00 and Y = 372,453.37; thence West 3,640.00 feet along the North boundary of said State Lease No. 20938 to its Northernmost Northwest corner also being a point on the East boundary of said State Lease No. 20936 having Coordinates of X = 2,316,950.00 and Y = 372,453.37; thence North 3,356.63 feet along the East boundary of said State Lease No. 20936 to the point of beginning, containing approximately **280.49 acres**, all as more particularly outlined on a plat on file in the Office of Mineral Resources, Department of Natural Resources. All bearings, distances and coordinates are based on Louisiana Coordinate System of 1927, (North or South Zone), where applicable.

NOTE: The above description of the Tract nominated for lease has been provided and corrected, where required, exclusively by the nomination party. Any mineral lease selected from this Tract and awarded by the Louisiana State Mineral and Energy Board shall be without warranty of any kind, either express, implied, or statutory, including, but not limited to, the implied warranties of merchantability and fitness for a particular purpose. Should the mineral lease awarded by the Louisiana State Mineral and Energy Board be subsequently modified, cancelled or abrogated due to the existence of conflicting leases, operating agreements, private claims or other future obligations or conditions which may affect all or any portion of the leased Tract, it shall not relieve the Lessee of the obligation to pay any bonus due thereon to the Louisiana State Mineral and Energy Board, nor shall the Louisiana State Mineral and Energy Board be obligated to refund any consideration paid by the Lessor prior to such modification, cancellation, or abrogation, including, but not limited to, bonuses, rentals and royalties.

NOTE: The State of Louisiana does hereby reserve, and this lease shall be subject to, the imprescriptible right of surface use in the nature of a servitude in favor of the Department of Natural Resources, including its Offices and Commissions, for the sole purpose of implementing,

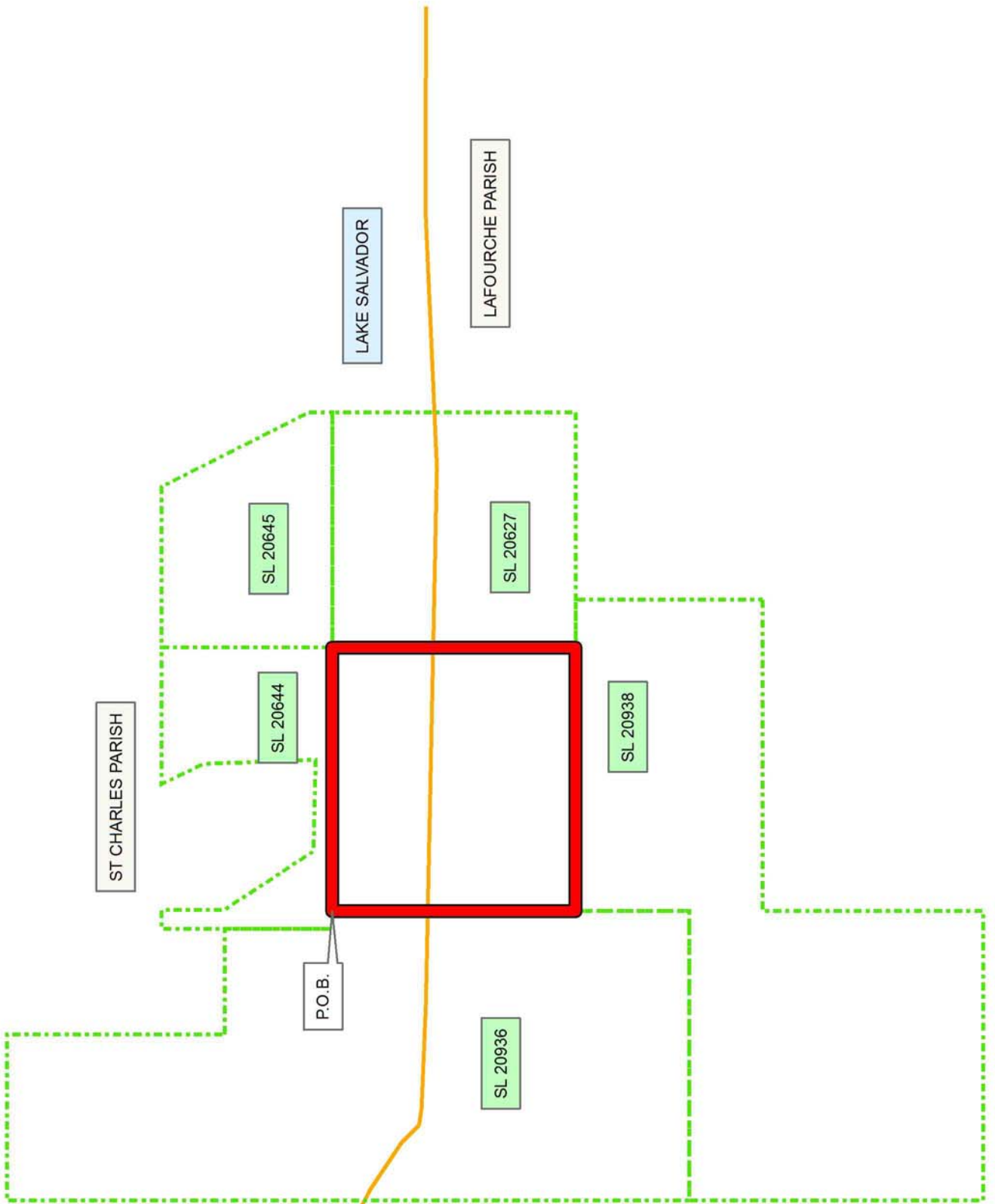
constructing, servicing and maintaining approved coastal zone management and/or restoration projects. Utilization of any and all rights derived under this lease by the mineral lessee, its agents, successors or assigns, shall not interfere with nor hinder the reasonable surface use by the Department of Natural Resources, its Offices or Commissions, as herein above reserved.

Applicant: DAY EXPLORATION

Bidder	Cash Payment	Price/Acre	Rental	Oil	Gas	Other

Legend

- 12110022 (Red outline)
- Active_Leases (Green dashed line)
- Counties (Orange line)



TRACT 42973 - Lafourche Parish, Louisiana

All of the lands now or formerly constituting the beds and bottoms of all water bodies of every nature and description as to which title is vested in the State of Louisiana, together with all islands arising therein and other lands formed by accretion or by reliction, where allowed by law, excepting tax adjudicated lands, and not presently under mineral lease on November 14, 2012, situated in Lafourche Parish, Louisiana, and more particularly described as follows: Beginning at a point on the South boundary of State Lease No. 20629 having Coordinates of X = 2,325,436.08 and Y = 366,684.26; thence along the boundaries of said State Lease No. 20629 the following courses: East 1,728.62 feet to a point having Coordinates of X = 2,327,164.70 and Y = 366,684.26 and North 164.27 feet to the Southwest corner of State Lease No. 20858 having Coordinates of X = 2,327,164.70 and Y = 366,848.53; thence North 43 degrees 04 minutes 08 seconds East 2,043.26 feet along the South boundary of said State Lease No. 20858 to its Southeast corner also being the Southwest corner of State Lease No. 20860 having Coordinates of X = 2,328,560.00 and Y = 368,341.20; thence North 59 degrees 34 minutes 03 seconds East 2,313.43 feet along the South boundary of said State Lease No. 20860 to its Southeast corner also being the Southwest corner of State Lease No. 20861 having Coordinates of X = 2,330,554.70 and Y = 369,513.00; thence North 58 degrees 44 minutes 38 seconds East 2,303.52 feet along the South boundary of said State Lease No. 20861 to its Southeast corner also being the Southwest corner of State Lease No. 20859 having Coordinates of X = 2,332,523.88 and Y = 370,708.21; thence along the boundaries of said State Lease No. 20859 the following courses: North 56 degrees 11 minutes 11 seconds East 1,741.50 feet to a point having Coordinates of X = 2,333,970.81 and Y = 371,677.34, North 60 degrees 56 minutes 06 seconds East 1,085.10 feet to a point having Coordinates of X = 2,334,919.26 and Y = 372,204.48 and South 37 degrees 57 minutes 40 seconds East 767.98 feet to a point having Coordinates of X = 2,335,391.67 and Y = 371,598.98; thence South 16,370.77 feet to a point having Coordinates of X = 2,335,391.67 and Y = 355,228.21; thence North 89 degrees 59 minutes 59 seconds West 9,878.21 feet to a point having Coordinates of X = 2,325,513.46 and Y = 355,228.27; thence North 00 degrees 23 minutes 13 seconds West 11,456.25 feet to the point of beginning, containing approximately **2,460 acres**, all as more particularly outlined on a plat on file in the Office of Mineral Resources, Department of Natural Resources. All bearings, distances and coordinates are based on Louisiana Coordinate System of 1927, (North or South Zone), where applicable.

NOTE: The above description of the Tract nominated for lease has been provided and corrected, where required, exclusively by the nomination party. Any mineral lease selected from this Tract and awarded by the Louisiana State Mineral and Energy Board shall be without warranty of any kind, either express, implied, or statutory, including, but not limited to, the implied warranties of merchantability and fitness for a particular purpose. Should the mineral lease awarded by the Louisiana State Mineral and Energy Board be subsequently modified, cancelled or abrogated due to

the existence of conflicting leases, operating agreements, private claims or other future obligations or conditions which may affect all or any portion of the leased Tract, it shall not relieve the Lessee of the obligation to pay any bonus due thereon to the Louisiana State Mineral and Energy Board, nor shall the Louisiana State Mineral and Energy Board be obligated to refund any consideration paid by the Lessor prior to such modification, cancellation, or abrogation, including, but not limited to, bonuses, rentals and royalties.

NOTE: The State of Louisiana does hereby reserve, and this lease shall be subject to, the imprescriptible right of surface use in the nature of a servitude in favor of the Department of Natural Resources, including its Offices and Commissions, for the sole purpose of implementing, constructing, servicing and maintaining approved coastal zone management and/or restoration projects. Utilization of any and all rights derived under this lease by the mineral lessee, its agents, successors or assigns, shall not interfere with nor hinder the reasonable surface use by the Department of Natural Resources, its Offices or Commissions, as herein above reserved.

Applicant: DAY EXPLORATION

Bidder	Cash Payment	Price/Acre	Rental	Oil	Gas	Other

Legend

2110025

Active_Leases

IMAGERY.DOQQ_2008_1M_CIR

LAFOURCHE PARISH

LAKE SALVADOR

T16S - R22E

SL 20859

SL 20860

SL 20861

SL 20858

SL 20629

P.O.B.

T16S - R21E

0 3,000 Feet

N

TRACT 42974 - Lafourche Parish, Louisiana

All of the lands now or formerly constituting the beds and bottoms of all water bodies of every nature and description as to which title is vested in the State of Louisiana, together with all islands arising therein and other lands formed by accretion or by reliction, where allowed by law, excepting tax adjudicated lands, and not presently under mineral lease on November 14, 2012, situated in Lafourche Parish, Louisiana, and more particularly described as follows: Beginning at a point having Coordinates of X = 2,307,058.46 and Y = 366,826.42; thence East 5,899.17 feet to the Southwest corner of State Lease No. 20938 having Coordinates of X = 2,312,957.62 and Y = 366,826.42; thence continue East 3,992.38 feet along the South boundary of said State Lease No. 20938 to its Southeast corner also being a point on the East boundary of State Lease No. 20628 having Coordinates of X = 2,316,950.00 and Y = 366,826.42; thence along the boundaries of said State Lease No. 20628 the following courses: South 456.42 feet to a point having Coordinates of X = 2,316,950.00 and Y = 366,370.00, East 4,300.00 feet to a point having Coordinates of X = 2,321,250.00 and Y = 366,370.00 and North 314.26 feet to the Southwest corner of State Lease No. 20877 having Coordinates of X = 2,321,250.00 and Y = 366,684.26; thence East 1,633.10 feet along the South boundary of said State Lease No. 20877 to its Southeast corner also being the Southwest corner of State Lease No. 20629 having Coordinates of X = 2,322,883.10 and Y = 366,684.26; thence continue East 2,552.98 feet to a point having Coordinates of X = 2,325,436.08 and Y = 366,684.26; thence South 00 degrees 23 minutes 13 seconds East 11,456.25 feet to a point having Coordinates of X = 2,325,513.46 and Y = 355,228.27; thence West 18,455.00 feet to a point having Coordinates of X = 2,307,058.46 and Y = 355,228.27; thence North 11,598.15 feet to the point of beginning, (This lease includes only waterbottoms claimed and owned by the state and specifically excludes any School Indemnity land located within the above described tract), containing approximately **263 acres**, all as more particularly outlined on a plat on file in the Office of Mineral Resources, Department of Natural Resources. All bearings, distances and coordinates are based on Louisiana Coordinate System of 1927, (North or South Zone), where applicable.

NOTE: The above description of the Tract nominated for lease has been provided and corrected, where required, exclusively by the nomination party. Any mineral lease selected from this Tract and awarded by the Louisiana State Mineral and Energy Board shall be without warranty of any kind, either express, implied, or statutory, including, but not limited to, the implied warranties of merchantability and fitness for a particular purpose. Should the mineral lease awarded by the Louisiana State Mineral and Energy Board be subsequently modified, cancelled or abrogated due to the existence of conflicting leases, operating agreements, private claims or other future obligations or conditions which may affect all or any portion of the leased Tract, it shall not relieve the Lessee of the obligation to pay any bonus due thereon to the Louisiana State Mineral and Energy Board, nor shall the Louisiana State Mineral and Energy Board be

obligated to refund any consideration paid by the Lessor prior to such modification, cancellation, or abrogation, including, but not limited to, bonuses, rentals and royalties.

NOTE: The State of Louisiana does hereby reserve, and this lease shall be subject to, the imprescriptible right of surface use in the nature of a servitude in favor of the Department of Natural Resources, including its Offices and Commissions, for the sole purpose of implementing, constructing, servicing and maintaining approved coastal zone management and/or restoration projects. Utilization of any and all rights derived under this lease by the mineral lessee, its agents, successors or assigns, shall not interfere with nor hinder the reasonable surface use by the Department of Natural Resources, its Offices or Commissions, as herein above reserved.

Applicant: DAY EXPLORATION

Bidder	Cash Payment	Price/Acre	Rental	Oil	Gas	Other

Legend

12110024

Active_Leases

IMAGERY.DOQQ_2008_1M_CIR



LAKE SALVADOR

SL 20629

SL 20877

SL 20628

SL 20938

0 3,000 Feet

T16S - R21E

P.O.B.

T17S - R21E

TRACT 42975 - Lafourche Parish, Louisiana

All of the lands now or formerly constituting the beds and bottoms of all water bodies of every nature and description as to which title is vested in the State of Louisiana, together with all islands arising therein and other lands formed by accretion or by reliction, where allowed by law, excepting tax adjudicated lands, and not presently under mineral lease on November 14, 2012, situated in Lafourche Parish, Louisiana, and more particularly described as follows: Beginning at a point having Coordinates of X = 2,335,391.67 and Y = 366,000.00; thence East 6,408.33 feet to a point being the Southwest corner of State Lease No. 20862 having Coordinates of X = 2,341,800.00 and Y = 366,000.00; thence continue East 4,400.00 feet along the South boundary of said State Lease No. 20862 to a point being its Southeast corner having Coordinates of X = 2,346,200.00 and Y = 366,000.00; thence continue East 2,789.66 feet to a point having Coordinates of X = 2,348,989.65 and Y = 366,000.00; thence South 10,807.44 feet to a point having Coordinates of X = 2,348,989.65 and Y = 355,192.56; thence North 89 degrees 50 minutes 59 seconds West 13,598.04 feet to a point having Coordinates of X = 2,335,391.67 and Y = 355,228.21; thence North 10,771.79 feet to the point of beginning, containing approximately **947 acres**, all as more particularly outlined on a plat on file in the Office of Mineral Resources, Department of Natural Resources. All bearings, distances and coordinates are based on Louisiana Coordinate System of 1927, (North or South Zone), where applicable.

NOTE: The above description of the Tract nominated for lease has been provided and corrected, where required, exclusively by the nomination party. Any mineral lease selected from this Tract and awarded by the Louisiana State Mineral and Energy Board shall be without warranty of any kind, either express, implied, or statutory, including, but not limited to, the implied warranties of merchantability and fitness for a particular purpose. Should the mineral lease awarded by the Louisiana State Mineral and Energy Board be subsequently modified, cancelled or abrogated due to the existence of conflicting leases, operating agreements, private claims or other future obligations or conditions which may affect all or any portion of the leased Tract, it shall not relieve the Lessee of the obligation to pay any bonus due thereon to the Louisiana State Mineral and Energy Board, nor shall the Louisiana State Mineral and Energy Board be obligated to refund any consideration paid by the Lessor prior to such modification, cancellation, or abrogation, including, but not limited to, bonuses, rentals and royalties.

NOTE: The State of Louisiana does hereby reserve, and this lease shall be subject to, the imprescriptible right of surface use in the nature of a servitude in favor of the Department of Natural Resources, including its Offices and Commissions, for the sole purpose of implementing, constructing, servicing and maintaining approved coastal zone management and/or restoration projects. Utilization of any and all rights derived under this lease by the mineral lessee, its agents, successors or assigns, shall not interfere with nor hinder the reasonable surface use by the

Department of Natural Resources, its Offices or Commissions, as herein above reserved.

Applicant: DAY EXPLORATION

Bidder	Cash Payment	Price/Acre	Rental	Oil	Gas	Other

Legend

12110027



Active_Leases



IMAGERY.DOQQ_2008_1M_CIR

LAFOURCHE PARISH

LAKE SALVADOR

SL 20862

P.O.B.

T16S - R22E

T17S - R22E

0 3,000 Feet



TRACT 42976 - Plaquemines Parish, Louisiana

All of the lands now or formerly constituting the beds and bottoms of all water bodies of every nature and description as to which title is vested in the State of Louisiana, together with all islands arising therein and other lands formed by accretion or by reliction, where allowed by law, excepting tax adjudicated lands, and not presently under mineral lease on November 14, 2012, situated in Plaquemines Parish, Louisiana, and more particularly described as follows: Beginning at a point on the Southwestern corner of State Lease No. 19250 having Coordinates of X = 2,569,403.70 and Y = 249,698.71; thence South 53 degrees 32 minutes 34 seconds East approximately 946 feet, along a Southern boundary of said State Lease No. 19250, to a point on a Western boundary of State Lease No. 192, as amended; thence Southerly and Westerly approximately 5,743 feet, along the Western boundary of said State Lease No. 192, as amended, to a point having a Coordinate of X = 2,565,720.00, said point being the Southeast corner of State Lease No. 20483; thence along the boundary of said State Lease No. 20483 the following courses: North approximately 827 feet to a point having Coordinates of X = 2,565,720.00 and Y = 246,653.00; North 63 degrees 58 minutes 21 seconds West 1,620.33 feet to a point having Coordinates of X = 2,564,264.00 and Y = 247,364.00; North 1,358.00 feet to a point having Coordinates of X = 2,564,264.00 and Y = 248,722.00; West 2,936.00 feet to a point having Coordinates of X = 2,561,328.00 and Y = 248,722.00; South 905.00 feet to a point having Coordinates of X = 2,561,328.00 and Y = 247,817.00; South 54 degrees 52 minutes 52 seconds East 2,035.55 feet to a point having Coordinates of X = 2,562,993.00 and Y = 246,646.00; South 00 degrees 12 minutes 15 seconds East 1,684.01 feet, to a point having Coordinates of X = 2,562,999.00 and Y = 244,962.00; and East approximately 1,468 feet to a point having a Coordinate of Y = 244,962.00, said point being on a Western boundary of said State Lease No. 192, as amended; thence Southerly approximately 2,981 feet along said Western boundary of said State Lease No. 192, as amended, to a point on a Northern boundary of State Lease No. 3212; thence Westerly along the boundary of said State Lease No. 3212 approximately 3,953 feet to a point on an Eastern boundary of State Lease No. 2651; thence along the boundary of said State Lease No. 2651, the following courses: North approximately 2,399 feet and West approximately 8,576 feet to a point having a Coordinate of X = 2,552,352.00; thence North approximately 8,158 feet to a point having Coordinates of X = 2,552,352.00 and Y = 252,700.00; thence East 17,668.00 feet to a point having Coordinates of X = 2,570,020.00 and Y = 252,700.00; thence South 2,164.32 feet to a point on the Northwestern boundary of said State Lease No. 19250 having Coordinates of X = 2,570,020.00 and Y = 250,535.68; thence South 36 degrees 21 minutes 57 seconds West 1,039.40 feet along said Northwestern boundary of said State Lease No. 19250 to the point of beginning, containing approximately **907 acres**, all as more particularly outlined on a plat on file in the Office of Mineral Resources, Department of Natural Resources. All bearings, distances and coordinates are based on Louisiana Coordinate System of 1927, (North or South Zone), where applicable.

NOTE: The above description of the Tract nominated for lease has been provided and corrected, where required, exclusively by the nomination party. Any mineral lease selected from this Tract and awarded by the Louisiana State Mineral and Energy Board shall be without warranty of any kind, either express, implied, or statutory, including, but not limited to, the implied warranties of merchantability and fitness for a particular purpose. Should the mineral lease awarded by the Louisiana State Mineral and Energy Board be subsequently modified, cancelled or abrogated due to the existence of conflicting leases, operating agreements, private claims or other future obligations or conditions which may affect all or any portion of the leased Tract, it shall not relieve the Lessee of the obligation to pay any bonus due thereon to the Louisiana State Mineral and Energy Board, nor shall the Louisiana State Mineral and Energy Board be obligated to refund any consideration paid by the Lessor prior to such modification, cancellation, or abrogation, including, but not limited to, bonuses, rentals and royalties.

NOTE: The State of Louisiana does hereby reserve, and this lease shall be subject to, the imprescriptible right of surface use in the nature of a servitude in favor of the Department of Natural Resources, including its Offices and Commissions, for the sole purpose of implementing, constructing, servicing and maintaining approved coastal zone management and/or restoration projects. Utilization of any and all rights derived under this lease by the mineral lessee, its agents, successors or assigns, shall not interfere with nor hinder the reasonable surface use by the Department of Natural Resources, its Offices or Commissions, as herein above reserved.

Applicant: ROBERT A. SCHROEDER, INC.

Bidder	Cash Payment	Price/Acre	Rental	Oil	Gas	Other

Legend

12110017

Active_Leases

IMAGERY.DOQQ_2008_1M_CIR



PLAQUEMINES PARISH

T20S - R29E

SL 19250

P.O.B.

SL 192

BAY POMME D'OR

SL 20483

SL 3212

SL 192

SL 2651

BAY CHERI