

**TRACT 43003 - Terrebonne Parish, Louisiana**

All of the lands now or formerly constituting the beds and bottoms of all water bodies of every nature and description as to which title is vested in the State of Louisiana, together with all islands arising therein and other lands formed by accretion or by reliction, where allowed by law, excepting tax adjudicated lands, and not presently under mineral lease on December 12, 2012, situated in Terrebonne Parish, Louisiana, and more particularly described as follows: Beginning at a point on the East boundary of State Lease No. 724, as amended having Coordinates of X = 2,186,757.31 and Y = 212,298.94; thence East 15,742.69 feet to a point having Coordinates of X = 2,202,500.00 and Y = 212,298.94; thence South 18,228.34 feet to a point on the North boundary of State Lease No. 15785, as amended having Coordinates of X = 2,202,500.00 and Y = 194,070.60; thence along the boundaries of said State Lease No. 15785 the following courses: South 72 degrees 58 minutes 11 seconds West 987.10 feet to a point having Coordinates of X = 2,201,556.18 and Y = 193,781.50, North 39 degrees 06 minutes 59 seconds West 92.50 feet to a point having Coordinates of X = 2,201,497.82 and Y = 193,853.27 and South 79 degrees 22 minutes 08 seconds West 184.90 feet to a point having Coordinates of X = 2,201,316.09 and Y = 193,819.16; thence West 14,469.63 feet to the Southeast corner of said State Lease No. 724 having Coordinates of X = 2,186,846.46 and Y = 193,819.16; thence North 00 degrees 16 minutes 35 seconds West 18,480.00 feet along the East boundary of said State Lease No. 724 to the point of beginning, **LESS AND EXCEPT** any right, title, and interest in lands owned by and not under lease from the State of Louisiana, on behalf of the Terrebonne Parish School Board, situated in Section 16, Township 21 South, Range 17 East, St. Mary Parish, Louisiana, contained within the above described tract, containing approximately **268 acres**, all as more particularly outlined on a plat on file in the Office of Mineral Resources, Department of Natural Resources. All bearings, distances and coordinates are based on Louisiana Coordinate System of 1927, (North or South Zone), where applicable.

NOTE: The above description of the Tract nominated for lease has been provided and corrected, where required, exclusively by the nomination party. Any mineral lease selected from this Tract and awarded by the Louisiana State Mineral and Energy Board shall be without warranty of any kind, either express, implied, or statutory, including, but not limited to, the implied warranties of merchantability and fitness for a particular purpose. Should the mineral lease awarded by the Louisiana State Mineral and Energy Board be subsequently modified, cancelled or abrogated due to the existence of conflicting leases, operating agreements, private claims or other future obligations or conditions which may affect all or any portion of the leased Tract, it shall not relieve the Lessee of the obligation to pay any bonus due thereon to the Louisiana State Mineral and Energy Board, nor shall the Louisiana State Mineral and Energy Board be obligated to refund any consideration paid by the Lessor prior to such modification, cancellation, or abrogation, including, but not limited to, bonuses, rentals and royalties.

NOTE: The State of Louisiana does hereby reserve, and this lease shall be subject to, the imprescriptible right of surface use in the nature of a servitude in favor of the Department of Natural Resources, including its Offices and Commissions, for the sole purpose of implementing, constructing, servicing and maintaining approved coastal zone management and/or restoration projects. Utilization of any and all rights derived under this lease by the mineral lessee, its agents, successors or assigns, shall not interfere with nor hinder the reasonable surface use by the Department of Natural Resources, its Offices or Commissions, as herein above reserved.

Applicant: CYPRESS ENERGY CORPORATION

Bidder	Cash Payment	Price/ Acre	Rental	Oil	Gas	Other



Legend

12/20/17

Active\_Leases

IMAGERY.DOQQ\_2008\_1M\_CIR

T21S - R17E

TERREBONNE PARISH

BAYOU SALE

SL 15785

BAYOU SALE

SL 724

BAYOU COLYELL

P.O.B.

0 4,000 Feet



**TRACT 43004 - Terrebonne Parish, Louisiana**

All of the lands now or formerly constituting the beds and bottoms of all water bodies of every nature and description as to which title is vested in the State of Louisiana, together with all islands arising therein and other lands formed by accretion or by reliction, where allowed by law, excepting tax adjudicated lands, and not presently under mineral lease on December 12, 2012, situated in Terrebonne Parish, Louisiana, and more particularly described as follows: Beginning at a point having Coordinates of X = 2,271,846.52 and Y = 213,034.74; thence East 10,478.79 feet to a point having Coordinates of X = 2,282,325.32 and Y = 213,034.74; thence South 10,732.22 feet to a point having Coordinates of X = 2,282,325.32 and Y = 202,302.51; thence West 2,957.40 feet to a point on the east boundary of State Lease No. 199, as amended having Coordinates of X = 2,279,367.92 and Y = 202,302.51; thence along the boundaries of said State Lease No. 199 the following courses; North 23 degrees 07 minutes 50 seconds East 228.71 feet to a point having Coordinates of X = 2,279,457.77 and Y = 202,512.85, North 28 degrees 55 minutes 50 seconds East 224.40 feet to a point having Coordinates of X = 2,279,566.32 and Y = 202,709.24, North 32 degrees 28 minutes 50 seconds East 202.50 feet to a point having Coordinates of X = 2,279,675.07 and Y = 202,880.07, South 88 degrees 16 minutes 50 seconds West 220.10 feet to a point having Coordinates of X = 2,279,455.07 and Y = 202,873.46, South 82 degrees 47 minutes 50 seconds West 202.05 feet to a point having Coordinates of X = 2,279,254.61 and Y = 202,848.13, North 00 degrees 25 minutes 10 seconds West 1,012.70 feet to a point having Coordinates of X = 2,279,247.20 and Y = 203,860.80 and South 89 degrees 34 minutes 50 seconds West 787.34 feet to the Southeast corner of State Lease No. 20946 having Coordinates of X = 2,278,459.88 and Y = 203,855.04; thence along the boundaries of said State Lease No. 20946 the following courses; North 60 degrees 28 minutes 32 seconds East 3,659.30 feet to a point having Coordinates of X = 2,281,644.00 and Y = 205,658.33, North 00 degrees 00 minutes 01 seconds West 106.31 feet to a point having Coordinates of X = 2,281,644.00 and Y = 205,764.64, North 60 degrees 10 minutes 31 seconds West 5,558.97 feet to a point having Coordinates of X = 2,276,828.56 and Y = 208,542.00, West 432.97 feet to a point having Coordinates of X = 2,276,395.59 and Y = 208,542.00, South 24 degrees 53 minutes 29 seconds West 2,125.44 feet to a point having Coordinates of X = 2,275,501.00 and Y = 206,614.00 and South 34 degrees 01 minutes 36 seconds East 3,338.59 feet to its Southwest corner and a point on said State Lease No. 199 having Coordinates of X = 2,277,369.21 and Y = 203,847.05; thence along the boundaries of said State Lease No. 199 the following courses; South 89 degrees 34 minutes 50 seconds West 2,121.96 feet to a point having Coordinates of X = 2,275,247.30 and Y = 203,831.52, South 00 degrees 25 minutes 10 second East 466.50 feet to a point having Coordinates of X = 2,275,250.72 and Y = 203,365.03, South 89 degrees 34 minutes 50 seconds West 742.49 to a point having Coordinates of X = 2,274,508.25 and Y = 203,359.60, North 00 degrees 25 minutes 10 seconds West 3,073.24 feet to a point having Coordinates of X = 2,274,485.75 and Y = 206,432.75, South 89 degrees 34 minutes 50 seconds West 2,634.46 feet to a point having Coordinates of X = 2,271,851.36 and Y = 206,413.47 and

North 00 degrees 25 minutes 11 seconds West 660.00 feet to a point having Coordinates of X = 2,271,846.52 and Y = 207,073.45; thence North 5,961.29 feet to the point of beginning, containing approximately **1,804.71 acres**, all as more particularly outlined on a plat on file in the Office of Mineral Resources, Department of Natural Resources. All bearings, distances and coordinates are based on Louisiana Coordinate System of 1927, (North or South Zone), where applicable.

NOTE: The above description of the Tract nominated for lease has been provided and corrected, where required, exclusively by the nomination party. Any mineral lease selected from this Tract and awarded by the Louisiana State Mineral and Energy Board shall be without warranty of any kind, either express, implied, or statutory, including, but not limited to, the implied warranties of merchantability and fitness for a particular purpose. Should the mineral lease awarded by the Louisiana State Mineral and Energy Board be subsequently modified, cancelled or abrogated due to the existence of conflicting leases, operating agreements, private claims or other future obligations or conditions which may affect all or any portion of the leased Tract, it shall not relieve the Lessee of the obligation to pay any bonus due thereon to the Louisiana State Mineral and Energy Board, nor shall the Louisiana State Mineral and Energy Board be obligated to refund any consideration paid by the Lessor prior to such modification, cancellation, or abrogation, including, but not limited to, bonuses, rentals and royalties.

NOTE: The State of Louisiana does hereby reserve, and this lease shall be subject to, the imprescriptible right of surface use in the nature of a servitude in favor of the Department of Natural Resources, including its Offices and Commissions, for the sole purpose of implementing, constructing, servicing and maintaining approved coastal zone management and/or restoration projects. Utilization of any and all rights derived under this lease by the mineral lessee, its agents, successors or assigns, shall not interfere with nor hinder the reasonable surface use by the Department of Natural Resources, its Offices or Commissions, as herein above reserved.

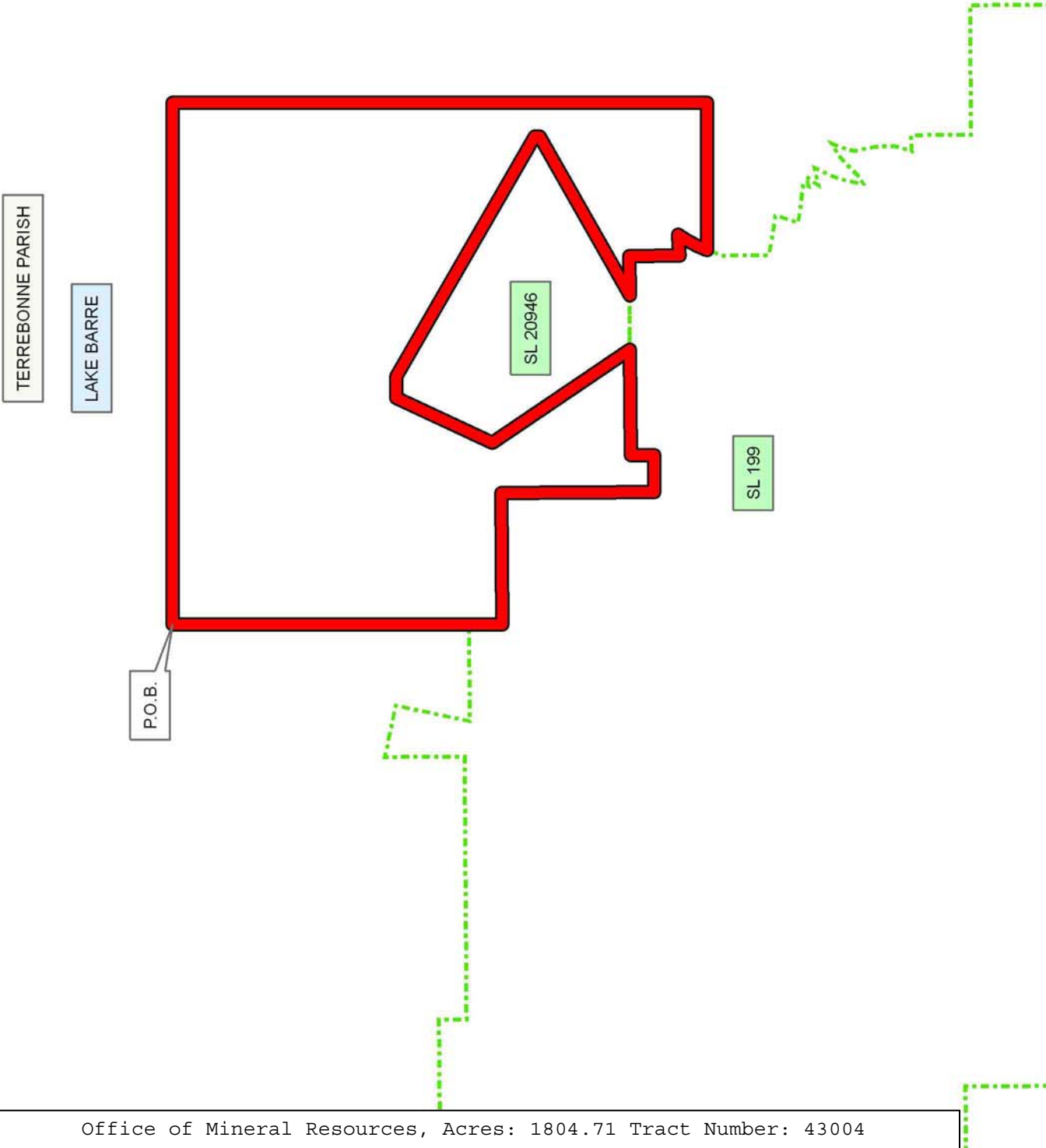
Applicant: CYPRESS ENERGY CORPORATION

Bidder	Cash Payment	Price/ Acre	Rental	Oil	Gas	Other

Legend

12120022

Active\_Leases



**TRACT 43005 - Terrebonne Parish, Louisiana**

All of the lands now or formerly constituting the beds and bottoms of all water bodies of every nature and description as to which title is vested in the State of Louisiana, together with all islands arising therein and other lands formed by accretion or by reliction, where allowed by law, excepting tax adjudicated lands, and not presently under mineral lease on December 12, 2012, situated in Terrebonne Parish, Louisiana, and more particularly described as follows: Beginning at a point having Coordinates of X = 2,282,325.32 and Y = 213,034.74; thence East 10,889.26 feet to a point having Coordinates of X = 2,293,214.58 and Y = 213,034.74; thence South 6,508.87 feet to a point on the north boundary of State Lease No. 20893 having Coordinates of X = 2,293,214.58 and Y = 206,525.87; thence along the boundaries of said State Lease No. 20893 the following courses: South 79 degrees 11 minutes 51 seconds West 2,590.48 feet to a point having Coordinates of X = 2,290,670.00 and Y = 206,040.34, South 2,410.34 feet to a point having Coordinates of X = 2,290,670.00 and Y = 203,630.00 and South 40 degrees 49 minutes 57 seconds East 1,754.49 feet to a point having Coordinates of X = 2,291,817.17 and Y = 202,302.51; thence West 9,491.85 feet to a point having Coordinates of X = 2,282,325.82 and Y = 202,302.51; thence North 10,732.22 feet to the point of beginning, containing approximately estimated to contain **2,467.82 acres**, all as more particularly outlined on a plat on file in the Office of Mineral Resources, Department of Natural Resources. All bearings, distances and coordinates are based on Louisiana Coordinate System of 1927, (North or South Zone), where applicable.

NOTE: The above description of the Tract nominated for lease has been provided and corrected, where required, exclusively by the nomination party. Any mineral lease selected from this Tract and awarded by the Louisiana State Mineral and Energy Board shall be without warranty of any kind, either express, implied, or statutory, including, but not limited to, the implied warranties of merchantability and fitness for a particular purpose. Should the mineral lease awarded by the Louisiana State Mineral and Energy Board be subsequently modified, cancelled or abrogated due to the existence of conflicting leases, operating agreements, private claims or other future obligations or conditions which may affect all or any portion of the leased Tract, it shall not relieve the Lessee of the obligation to pay any bonus due thereon to the Louisiana State Mineral and Energy Board, nor shall the Louisiana State Mineral and Energy Board be obligated to refund any consideration paid by the Lessor prior to such modification, cancellation, or abrogation, including, but not limited to, bonuses, rentals and royalties.

NOTE: The State of Louisiana does hereby reserve, and this lease shall be subject to, the imprescriptible right of surface use in the nature of a servitude in favor of the Department of Natural Resources, including its Offices and Commissions, for the sole purpose of implementing, constructing, servicing and maintaining approved coastal zone management and/or restoration projects. Utilization of any and all rights derived

under this lease by the mineral lessee, its agents, successors or assigns, shall not interfere with nor hinder the reasonable surface use by the Department of Natural Resources, its Offices or Commissions, as herein above reserved.

Applicant: CYPRESS ENERGY CORPORATION

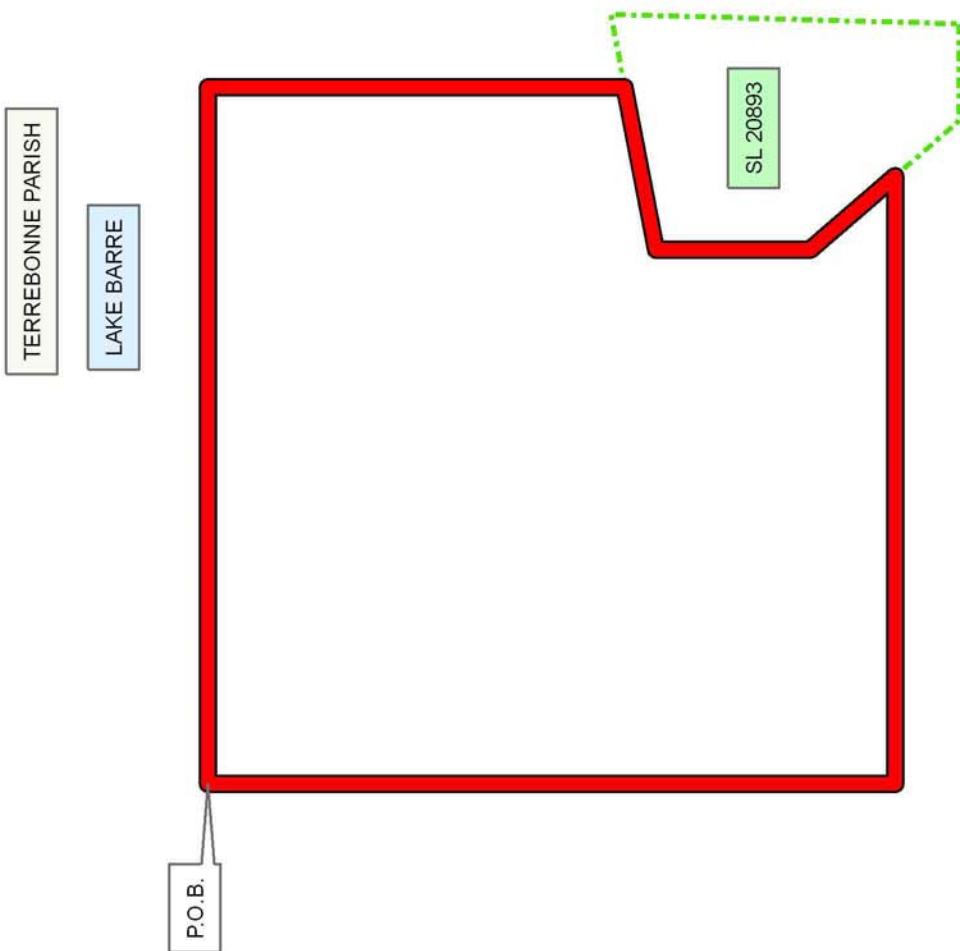
Bidder	Cash Payment	Price/ Acre	Rental	Oil	Gas	Other



Legend

12120023

Active\_Leases



**TRACT 43006 - Lafourche Parish, Louisiana**

All of the lands now or formerly constituting the beds and bottoms of all water bodies of every nature and description as to which title is vested in the State of Louisiana, together with all islands arising therein and other lands formed by accretion or by reliction, where allowed by law, excepting tax adjudicated lands, and not presently under mineral lease on December 12, 2012, situated in Lafourche Parish, Louisiana, and more particularly described as follows: Begin at a point having Coordinates of X = 2,323,048.95 and Y = 210,362.80; thence East 13,447.00 feet to the Northwest corner of State Lease No. 20783 having Coordinates of X = 2,336,495.95 and Y = 210,362.80; thence South 02 degrees 14 minutes 08 seconds East 6,334.63 feet along the West boundary of said State Lease No. 20783 to its Southwest corner having Coordinates of X = 2,336,743.05 and Y = 204,032.99; thence West 12,418.78 feet to a point on the East boundary of State Lease No. 14589 having Coordinates of X = 2,324,324.27 and Y = 204,032.99; thence along the boundaries of said State Lease No. 14589 the following courses: North 5,062.75 feet to a point having Coordinates of X = 2,324,324.26 and Y = 209,095.74 and West 1,275.33 feet to a point having Coordinates of X = 2,323,048.95 and Y = 209,095.74; thence North 1,267.06 feet to the point of beginning, (This lease includes only waterbottoms claimed and owned by the state and specifically excludes any land which the state may claim or own and to which the mineral rights are vested in the state), containing approximately **1,558 acres**, all as more particularly outlined on a plat on file in the Office of Mineral Resources, Department of Natural Resources. All bearings, distances and coordinates are based on Louisiana Coordinate System of 1927, (North or South Zone), where applicable.

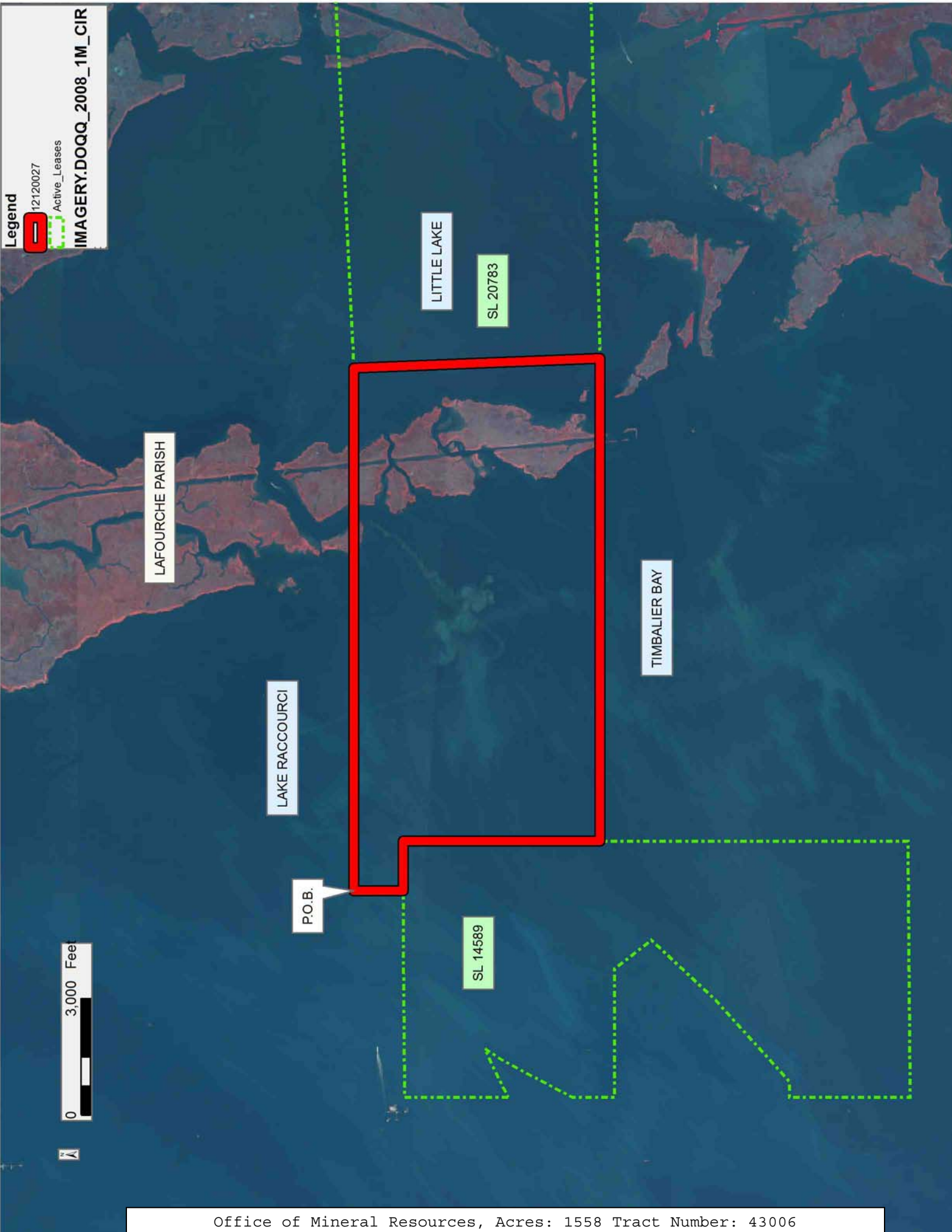
NOTE: The above description of the Tract nominated for lease has been provided and corrected, where required, exclusively by the nomination party. Any mineral lease selected from this Tract and awarded by the Louisiana State Mineral and Energy Board shall be without warranty of any kind, either express, implied, or statutory, including, but not limited to, the implied warranties of merchantability and fitness for a particular purpose. Should the mineral lease awarded by the Louisiana State Mineral and Energy Board be subsequently modified, cancelled or abrogated due to the existence of conflicting leases, operating agreements, private claims or other future obligations or conditions which may affect all or any portion of the leased Tract, it shall not relieve the Lessee of the obligation to pay any bonus due thereon to the Louisiana State Mineral and Energy Board, nor shall the Louisiana State Mineral and Energy Board be obligated to refund any consideration paid by the Lessor prior to such modification, cancellation, or abrogation, including, but not limited to, bonuses, rentals and royalties.

NOTE: The State of Louisiana does hereby reserve, and this lease shall be subject to, the imprescriptible right of surface use in the nature of a servitude in favor of the Department of Natural Resources, including its Offices and Commissions, for the sole purpose of implementing,

constructing, servicing and maintaining approved coastal zone management and/or restoration projects. Utilization of any and all rights derived under this lease by the mineral lessee, its agents, successors or assigns, shall not interfere with nor hinder the reasonable surface use by the Department of Natural Resources, its Offices or Commissions, as herein above reserved.

Applicant: CYPRESS ENERGY CORPORATION

Bidder	Cash Payment	Price/ Acre	Rental	Oil	Gas	Other



Legend

12120027

Active\_Leases

IMAGERY.DOQQ\_2008\_1M\_CIR

LITTLE LAKE

SL 20783

LAFOURCHE PARISH

LAKE RACCOURCI

P.O.B.

SL 14589

TIMBALIER BAY

0 3,000 Feet





**TRACT 43007 - Lafourche and Terrebonne Parishes, Louisiana**

All of the lands now or formerly constituting the beds and bottoms of all water bodies of every nature and description as to which title is vested in the State of Louisiana, together with all islands arising therein and other lands formed by accretion or by reliction, where allowed by law, excepting tax adjudicated lands, and not presently under mineral lease on December 12, 2012, situated in Lafourche and Terrebonne Parishes, Louisiana, and more particularly described as follows: Beginning at a point on the East boundary of State Lease No. 20892 having Coordinates of X = 2,299,700.00 and Y = 203,050.00; thence along the boundaries of said State Lease No. 20892 the following courses: North 55 degrees 04 minutes 50 seconds West 6,466.56 feet to a point having Coordinates of X = 2,294,397.69 and Y = 206,751.61 and South 79 degrees 11 minutes 53 seconds West 45.35 feet to its Northwest corner also being the Northeast corner of State Lease No. 20893 having Coordinates of X = 2,294,353.15 and y = 206,743.11; thence continue South 79 degrees 11 minutes 51 seconds West 1,159.12 feet along the North boundary of said State Lease No. 20893 to a point having Coordinates of X = 2,293,214.58 and Y = 206,525.87; thence North 694.79 feet to a point having Coordinates of X = 2,293,214.58 and Y = 207,220.66; thence East 10,871.60 feet to a point having Coordinates of X = 2,304,086.18 and Y = 207,220.66; thence North 1,739.30 feet to a point having Coordinates of X = 2,304,086.18 and Y = 208,959.96; thence East 1,885.30 feet to the Northwest corner of the North portion of State Lease No. 1480, as amended having Coordinates of X = 2,305,971.48 and Y = 208,959.96; thence South 01 degrees 00 minutes 00 seconds East 7,185.89 feet along the West boundary of said State Lease No. 1480 to its Southwest corner having Coordinates of X = 2,306,096.88 and Y = 201,775.16; thence South 475.80 feet to a point having Coordinates of X = 2,306,096.88 and Y = 201,299.36; thence West 5,626.88 feet to the Northeast corner of State Lease No. 20897 having Coordinates of X = 2,300,470.00 and Y = 201,299.36; thence South 89 degrees 59 minutes 57 seconds West 770.00 feet along the North boundary of said State Lease No. 20897 to the Southeast corner of said State Lease No. 20892 having Coordinates of X = 2,299,700.00 and Y = 201,299.35; thence North 1,750.65 feet along the East boundary of said State Lease No. 20892 to the point of beginning, (This lease includes only waterbottoms claimed and owned by the state and specifically excludes any land which the state may claim or own and to which the mineral rights are vested in the state), containing approximately **1,232 acres**, all as more particularly outlined on a plat on file in the Office of Mineral Resources, Department of Natural Resources. All bearings, distances and coordinates are based on Louisiana Coordinate System of 1927, (North or South Zone), where applicable.

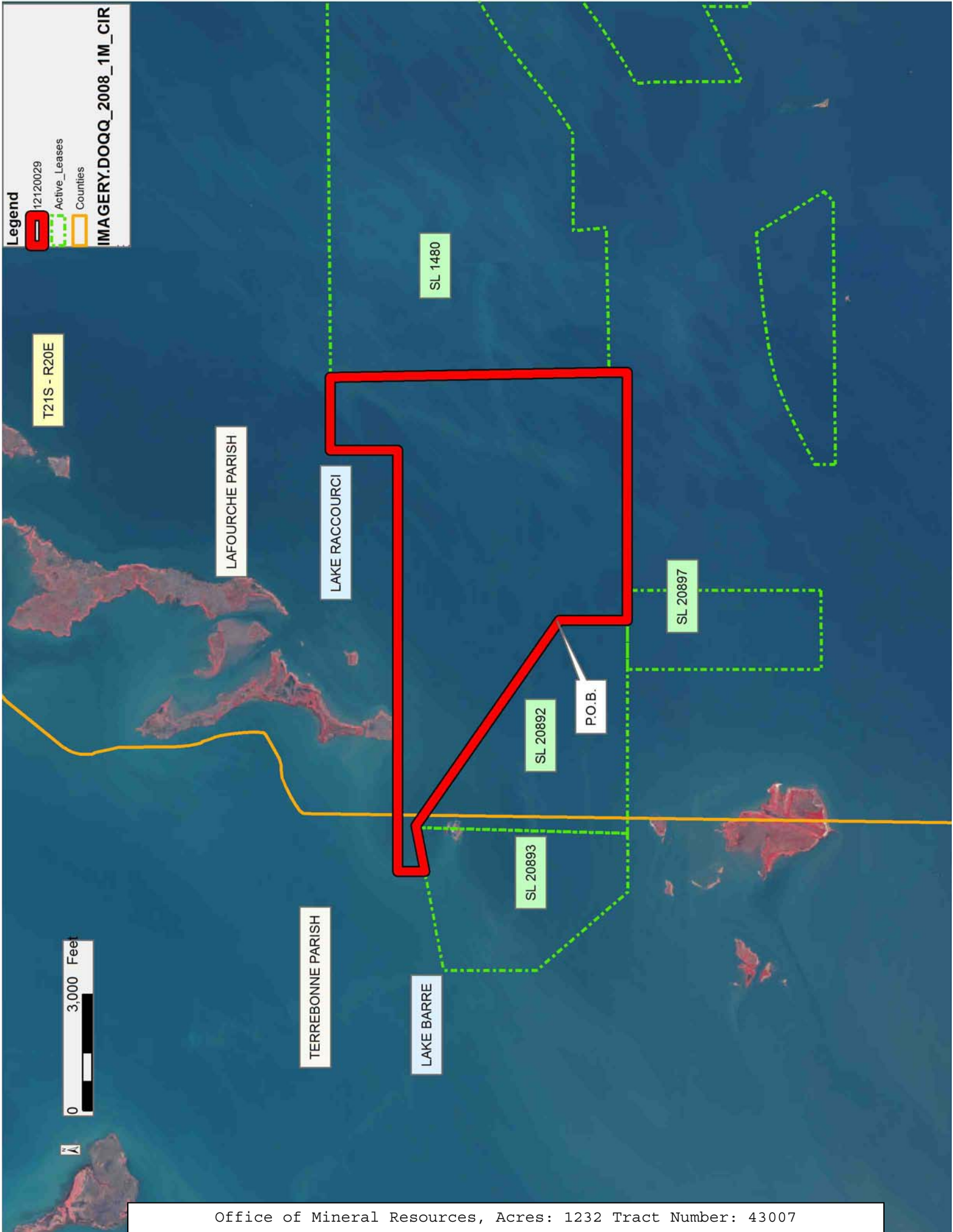
NOTE: The above description of the Tract nominated for lease has been provided and corrected, where required, exclusively by the nomination party. Any mineral lease selected from this Tract and awarded by the Louisiana State Mineral and Energy Board shall be without warranty of any kind, either express, implied, or statutory, including, but not limited to, the implied warranties of merchantability and fitness for a particular

purpose. Should the mineral lease awarded by the Louisiana State Mineral and Energy Board be subsequently modified, cancelled or abrogated due to the existence of conflicting leases, operating agreements, private claims or other future obligations or conditions which may affect all or any portion of the leased Tract, it shall not relieve the Lessee of the obligation to pay any bonus due thereon to the Louisiana State Mineral and Energy Board, nor shall the Louisiana State Mineral and Energy Board be obligated to refund any consideration paid by the Lessor prior to such modification, cancellation, or abrogation, including, but not limited to, bonuses, rentals and royalties.

NOTE: The State of Louisiana does hereby reserve, and this lease shall be subject to, the imprescriptible right of surface use in the nature of a servitude in favor of the Department of Natural Resources, including its Offices and Commissions, for the sole purpose of implementing, constructing, servicing and maintaining approved coastal zone management and/or restoration projects. Utilization of any and all rights derived under this lease by the mineral lessee, its agents, successors or assigns, shall not interfere with nor hinder the reasonable surface use by the Department of Natural Resources, its Offices or Commissions, as herein above reserved.

Applicant: CYPRESS ENERGY CORPORATION

Bidder	Cash Payment	Price/ Acre	Rental	Oil	Gas	Other



**TRACT 43008 - Lafourche Parish, Louisiana**

All of the lands now or formerly constituting the beds and bottoms of all water bodies of every nature and description as to which title is vested in the State of Louisiana, together with all islands arising therein and other lands formed by accretion or by reliction, where allowed by law, excepting tax adjudicated lands, and not presently under mineral lease on December 12, 2012, situated in Lafourche Parish, Louisiana, and more particularly described as follows: Beginning at the Southwest corner of the North portion of State Lease No. 1480, as amended having Coordinates of X = 2,306,096.88 and Y = 201,774.45; thence along the Southerly boundary the North portion of said State Lease No. 1480 the following courses and distances: North 88 degrees 50 minutes 07 seconds East 3,735.38 feet, North 05 degrees 13 minutes 26 seconds West 851.15 feet, North 89 degrees 38 minutes 36 seconds East 2,501.08 feet, North 60 degrees 21 minutes 42 seconds East 316.37 feet, North 56 degrees 35 minutes 32 seconds East 563.00 feet, North 53 degrees 31 minutes 51 seconds East 286.00 feet, North 50 degrees 47 minutes 34 seconds East 980.80 feet, North 52 degrees 52 minutes 09 seconds East 878.00 feet, North 56 degrees 33 minutes 36 seconds East 635.10 feet, North 59 degrees 18 minutes 01 seconds East 744.30 feet, North 57 degrees 30 minutes 24 seconds East 1,991.80 feet, North 63 degrees 26 minutes 06 seconds East 219.34 feet to a point being on the Western boundary of State Lease No. 14589, as amended; thence along the Western boundary of said State Lease No. 14589 the following courses and distances: North 63 degrees 26 minutes 06 seconds East 853.97 feet, North 65 degrees 49 minutes 15 seconds East 537.10 feet, South 34 degrees 01 minutes 10 seconds West 482.60 feet, South 28 degrees 36 minutes 38 seconds West 626.50 feet, South 27 degrees 48 minutes 59 seconds West 1,465.34 feet to a point being the Northernmost corner of the East portion of said State Lease No. 1480, thence along the boundaries of the East portion of said State Lease No. 1480 the following courses and distances: South 27 degrees 48 minutes 59 seconds West 377.66 feet, South 33 degrees 23 minutes 19 seconds West 527.00 feet, South 41 degrees 59 minutes 14 seconds West 403.60 feet, South 43 degrees 13 minutes 43 seconds West 686.20 feet, South 48 degrees 21 minutes 59 seconds West 722.50 feet, South 52 degrees 47 minutes 01 seconds West 992.00 feet, South 57 degrees 07 minutes 26 seconds West 976.40 feet, South 58 degrees 02 minutes 09 seconds West 516.60 feet, South 60 degrees 12 minutes 18 seconds West 289.10 feet, South 61 degrees 00 minutes 04 seconds West 152.35 feet, South 03 degrees 41 minutes 29 seconds East 454.47 feet, South 00 degrees 29 minutes 42 seconds East 2,283.26 feet, North 63 degrees 17 minutes 36 seconds East 2,167.69 feet, South 1,172.45 feet, and East 2,193.23 feet to a point on the Western boundary of said State Lease No. 14589 having Coordinates of X = 2,317,736.10 and Y = 198,143.96; thence South 2,082.84 feet along the Western boundary of said State Lease No. 14589 to its Southwest corner having Coordinates of X = 2,317,736.10 and Y = 196,061.12; thence South 89 degrees 30



minutes 18 seconds West 2,812.45 feet to the Northeast corner of the East portion of State Lease No. 3258, as amended having Coordinates of X = 2,314,923.76 and Y = 196,036.82; thence South 89 degrees 30 minutes 18 seconds West 1,692.73 feet along the North boundary of the East portion of said State Lease No. 3258 to its Northwest corner having Coordinates of X = 2,313,231.09 and Y = 196,022.20; thence South 89 degrees 30 minutes 18 seconds West 2,696.97 feet to the Southeast corner of the South portion of the said State Lease No. 1480 having Coordinates of X = 2,310,534.22 and Y = 195,998.90; thence along the East and North boundary of the South portion of said State Lease No. 1480 the following courses and distances:

North 43 degrees 10 minutes 43 seconds East 325.79 feet to a corner having Coordinates of X = 2,310,757.15 and Y = 196,236.48, North 31 degrees 20 minutes 43 seconds West 2,037.70 feet to a corner having Coordinates of X = 2,309,697.15 and Y = 197,976.77, South 84 degrees 46 minutes 18 seconds West 2,024.53 feet to a corner having Coordinates of X = 2,307,681.04 and Y = 197,792.28, South 81 degrees 46 minutes 24 seconds West 1,105.08 feet to a corner having Coordinates of X = 2,306,587.33 and Y = 197,634.16 and South 77 degrees 05 minutes 33 seconds West 503.16 feet to a point having Coordinates of X = 2,306,096.88 and Y = 197,521.76; thence North 4,252.69 feet to the point of beginning, **LESS AND EXCEPT** Operating Agreement 0320 as described as follows: Beginning at a point having Coordinates of X = 2,309,715.63 and Y = 202,712.37; thence South 73 degrees 36 minutes 35 seconds East 3,325.63 feet to a point having Coordinates of X = 2,312,906.11 and Y = 201,773.95; thence South 63 degrees 21 minutes 41 seconds West 2,123.35 feet to a point having Coordinates of X = 2,311,008.15 and Y = 200,821.92; thence North 70 degrees 12 minutes 56 seconds West 1,185.32 feet to a point having Coordinates of X = 2,309,892.80 and Y = 201,223.13; thence North 06 degrees 47 minutes 04 seconds West 1,499.74 feet to the point of beginning, from the surface to one hundred feet (100') below the stratigraphic equivalent of the Tex 11 Sand, as seen in the XPLOR State Lease 1480 #2 (Serial Number 224584) between 13,096 feet and 13,190 feet MD, (This lease includes only waterbottoms claimed and owned by the state and specifically excludes any land which the state may claim or own and to which the mineral rights are vested in the state), nominated tract containing approximately **1,409 acres**, all as more particularly outlined on a plat on file in the Office of Mineral Resources, Department of Natural Resources. All bearings, distances and coordinates are based on Louisiana Coordinate System of 1927, (North or South Zone), where applicable.

NOTE: The above description of the Tract nominated for lease has been provided and corrected, where required, exclusively by the nomination party. Any mineral lease selected from this Tract and awarded by the Louisiana State Mineral and Energy Board shall be without warranty of any kind, either express, implied, or statutory, including, but not limited to, the implied warranties of merchantability and fitness for a particular

purpose. Should the mineral lease awarded by the Louisiana State Mineral and Energy Board be subsequently modified, cancelled or abrogated due to the existence of conflicting leases, operating agreements, private claims or other future obligations or conditions which may affect all or any portion of the leased Tract, it shall not relieve the Lessee of the obligation to pay any bonus due thereon to the Louisiana State Mineral and Energy Board, nor shall the Louisiana State Mineral and Energy Board be obligated to refund any consideration paid by the Lessor prior to such modification, cancellation, or abrogation, including, but not limited to, bonuses, rentals and royalties.

NOTE: The State of Louisiana does hereby reserve, and this lease shall be subject to, the imprescriptible right of surface use in the nature of a servitude in favor of the Department of Natural Resources, including its Offices and Commissions, for the sole purpose of implementing, constructing, servicing and maintaining approved coastal zone management and/or restoration projects. Utilization of any and all rights derived under this lease by the mineral lessee, its agents, successors or assigns, shall not interfere with nor hinder the reasonable surface use by the Department of Natural Resources, its Offices or Commissions, as herein above reserved.

Applicant: CYPRESS ENERGY CORPORATION

Bidder	Cash Payment	Price/ Acre	Rental	Oil	Gas	Other

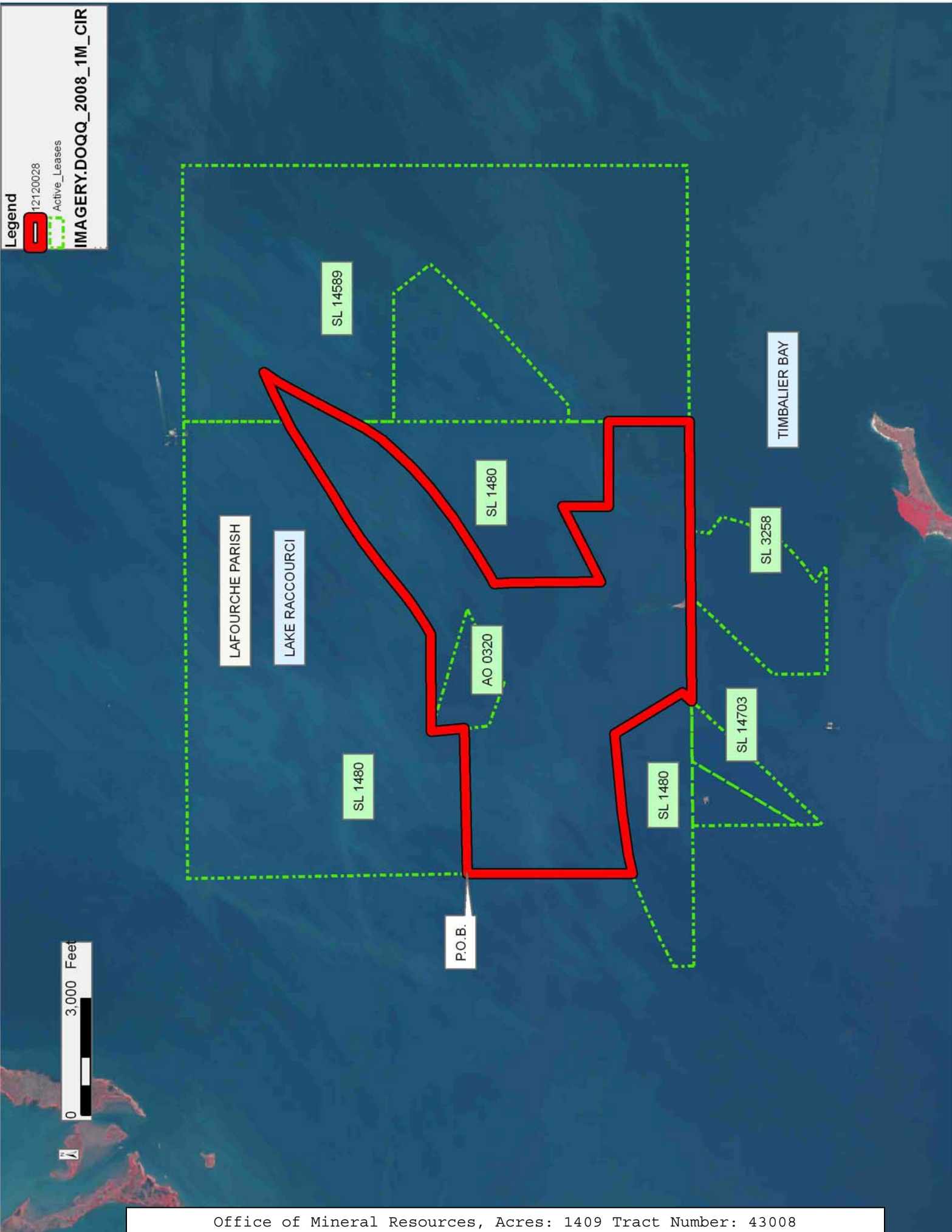
Legend

12120028

Active\_Leases

IMAGERY.DOQQ\_2008\_1M\_CIR

0 3,000 Feet



**TRACT 43009 - Lafourche Parish, Louisiana**

All of the lands now or formerly constituting the beds and bottoms of all water bodies of every nature and description as to which title is vested in the State of Louisiana, together with all islands arising therein and other lands formed by accretion or by reliction, where allowed by law, excepting tax adjudicated lands, and not presently under mineral lease on December 12, 2012, situated in Lafourche Parish, Louisiana, and more particularly described as follows: Beginning at a point on the East boundary of State Lease No. 14589 having Coordinates of X = 2,324,324.27 and Y = 204,032.99; thence East 12,418.79 feet to the Southwest corner of State Lease No. 20783 having Coordinates of X = 2,336,743.05 and Y = 204,032.99; thence South 00 degrees 25 minutes 29 seconds West 6,813.56 feet to a point having Coordinates of X = 2,336,692.55 and Y = 197,219.61; thence West 12,368.28 feet to a point on the East boundary of said State Lease No. 14589 having Coordinates of X = 2,324,324.27 and Y = 197,219.61; thence North 6,813.38 along the East boundary of said State Lease No. 14589 to the point of beginning, (This lease includes only waterbottoms claimed and owned by the state and specifically excludes any land which the state may claim or own and to which the mineral rights are vested in the state), containing approximately **1906 acres**, all as more particularly outlined on a plat on file in the Office of Mineral Resources, Department of Natural Resources. All bearings, distances and coordinates are based on Louisiana Coordinate System of 1927, (North or South Zone), where applicable.

NOTE: The above description of the Tract nominated for lease has been provided and corrected, where required, exclusively by the nomination party. Any mineral lease selected from this Tract and awarded by the Louisiana State Mineral and Energy Board shall be without warranty of any kind, either express, implied, or statutory, including, but not limited to, the implied warranties of merchantability and fitness for a particular purpose. Should the mineral lease awarded by the Louisiana State Mineral and Energy Board be subsequently modified, cancelled or abrogated due to the existence of conflicting leases, operating agreements, private claims or other future obligations or conditions which may affect all or any portion of the leased Tract, it shall not relieve the Lessee of the obligation to pay any bonus due thereon to the Louisiana State Mineral and Energy Board, nor shall the Louisiana State Mineral and Energy Board be obligated to refund any consideration paid by the Lessor prior to such modification, cancellation, or abrogation, including, but not limited to, bonuses, rentals and royalties.

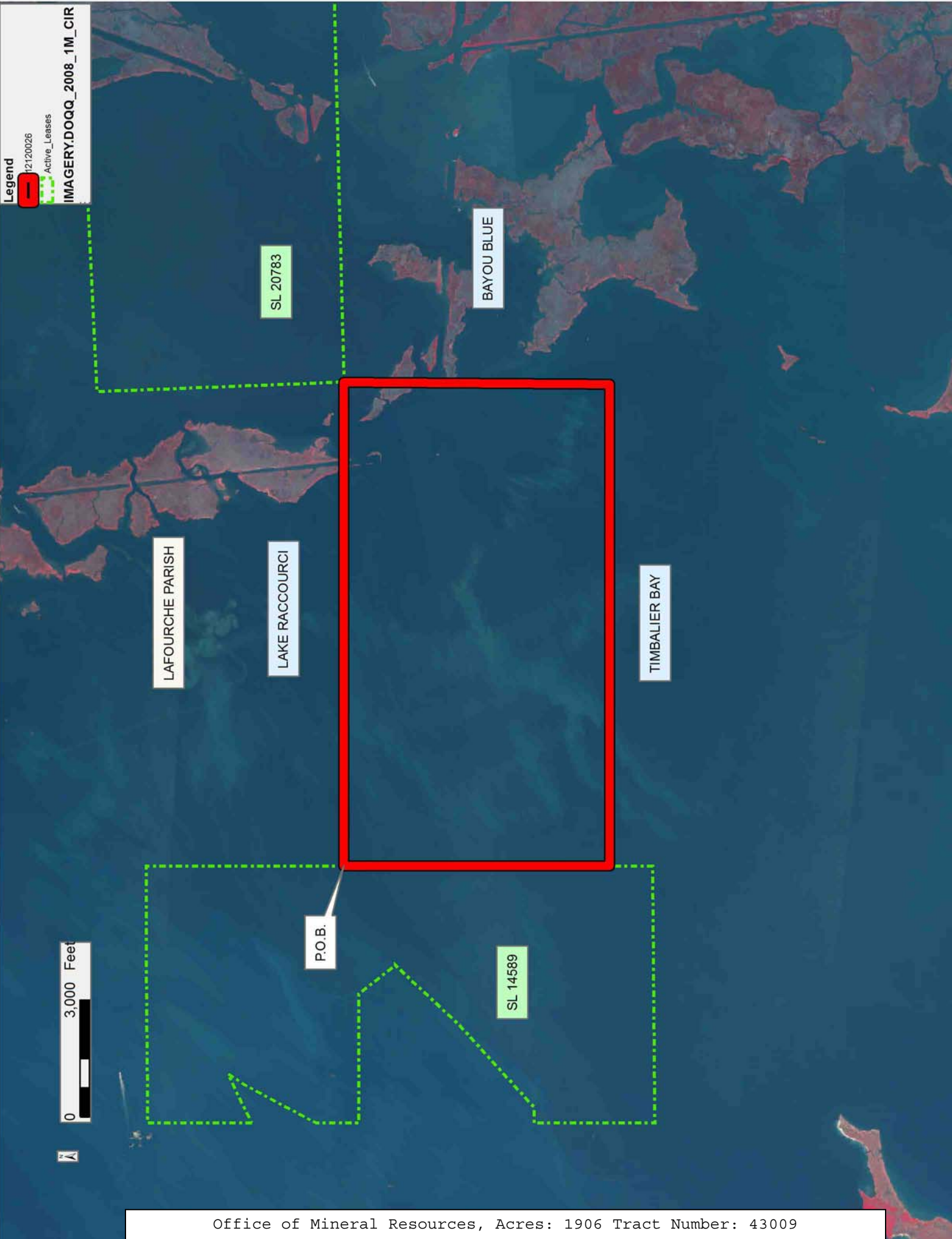
NOTE: The State of Louisiana does hereby reserve, and this lease shall be subject to, the imprescriptible right of surface use in the nature of a servitude in favor of the Department of Natural Resources, including its Offices and Commissions, for the sole purpose of implementing, constructing, servicing and maintaining approved coastal zone management and/or restoration projects. Utilization of any and all rights derived under this lease by the mineral lessee, its agents, successors or assigns,



shall not interfere with nor hinder the reasonable surface use by the Department of Natural Resources, its Offices or Commissions, as herein above reserved.

Applicant: CYPRESS ENERGY CORPORATION

Bidder	Cash Payment	Price/ Acre	Rental	Oil	Gas	Other



**TRACT 43010 - Lafourche Parish, Louisiana**

All of the lands now or formerly constituting the beds and bottoms of all water bodies of every nature and description as to which title is vested in the State of Louisiana, together with all islands arising therein and other lands formed by accretion or by reliction, where allowed by law, excepting tax adjudicated lands, and not presently under mineral lease on December 12, 2012, situated in Lafourche Parish, Louisiana, and more particularly described as follows: Beginning at the Northeast corner of State Lease No. 14703, as amended, said point also being the Southeast corner of State Lease No. 1480, as amended having Coordinates of X = 2,310,534.22 and Y = 195,998.90; thence North 89 degrees 30 minutes 18 seconds East 2,696.97 feet to the Northwest corner of State Lease No. 3258, as amended having Coordinates of X = 2,313,231.09 and Y = 196,022.20; thence along the West, South and East boundary of said State Lease No. 3258, as amended the following courses and distances: South 43 degrees 31 minutes 57 seconds West 2,906.95 feet to a corner having Coordinates of X = 2,311,228.89 and Y = 193,914.70, South 00 degrees 26 minutes 59 seconds East 1,399.89 feet to a corner having Coordinates of X = 2,311,239.87 and Y = 192,514.86, North 89 degrees 30 minutes 18 seconds East 2,788.87 feet to a corner having Coordinates of X = 2,314,028.64 and Y = 192,538.95, North 57 degrees 00 minutes 41 seconds West 534.71 feet to a corner having Coordinates of X = 2,313,580.14 and Y = 192,830.09, North 58 degrees 14 minutes 26 seconds East 493.84 feet to a corner having Coordinates of X = 2,314,000.03 and Y = 193,090.02, North 49 degrees 23 minutes 55 seconds East 368.80 feet to a corner having Coordinates of X = 2,314,280.04 and Y = 193,330.03, North 46 degrees 04 minutes 51 seconds East 374.80 feet to a corner having Coordinates of X = 2,314,550.02 and Y = 193,590.01; North 37 degrees 18 minutes 14 seconds East 264.00 feet to a corner having Coordinates of X = 2,314,710.01 and Y = 193,800.00, North 31 degrees 49 minutes 39 seconds East 341.30 feet to a corner having Coordinates of X = 2,314,890.00 and Y = 194,090.00, North 24 degrees 37 minutes 24 seconds East 264.00 feet to a corner having Coordinates of X = 2,315,000.00 and Y = 194,329.98, North 20 degrees 22 minutes 35 seconds East 373.40 feet to a corner having Coordinates of X = 2,315,130.01 and Y = 194,680.01, North 15 degrees 06 minutes 34 seconds East 580.77 feet to a corner having Coordinates of X = 2,315,281.40 and Y = 195,240.71, North 54 degrees 21 minutes 40 seconds West 530.82 feet to a corner having Coordinates of X = 2,314,850.00 and Y = 195,550.00 and North 08 degrees 36 minutes 56 seconds East 492.38 feet to its Northeast corner having Coordinates of X = 2,314,923.76 and Y = 196,036.82; thence North 89 degrees 30 minutes 18 seconds East 2,812.45 feet to a point on being the Southeast corner of State Lease No. 14589 having Coordinates of X = 2,317,736.10 and Y = 196,061.12; thence North 89 degrees 30 minutes 18 seconds East 112.31 feet to a point on the Southern boundary of said State Lease No. 14589 having Coordinates of X = 2,317,848.41 and Y = 196,062.09; thence South 7,469.62 feet to a point having Coordinates of X = 2,317,848.41 and Y = 188,592.47; thence West 10,451.87 feet to the

South corner of State Lease No. 3599, as amended having Coordinates of X = 2,307,396.54 and Y = 188,592.47; thence North 00 degrees 29 minutes 42 seconds West 4,043.58 feet along the East boundary of said State Lease No. 3599 to the Southeast corner of State Lease No. 14703, as amended having Coordinates of X = 2,307,361.61 and Y = 192,635.90; thence along the Southeast boundary of said State Lease No. 14703 the following courses and distances: North 43 degrees 30 minutes 18 seconds East 2,167.58 feet to a corner and North 43 degrees 10 minutes 43 seconds East 2,455.77 feet to the point of beginning, **LESS AND EXCEPT** any right, title, and interest in lands owned by and not under lease from the State of Louisiana, on behalf of the Lafourche Parish School Board, situated in Section 16, Township 22 South, Range 21 East, Lafourche Parish, Louisiana, contained within the above described tract, (This lease includes only waterbottoms claimed and owned by the state and specifically excludes any land which the state may claim or own and to which the mineral rights are vested in the state), containing approximately **1,353 acres**, all as more particularly outlined on a plat on file in the Office of Mineral Resources, Department of Natural Resources. All bearings, distances and coordinates are based on Louisiana Coordinate System of 1927, (North or South Zone), where applicable.

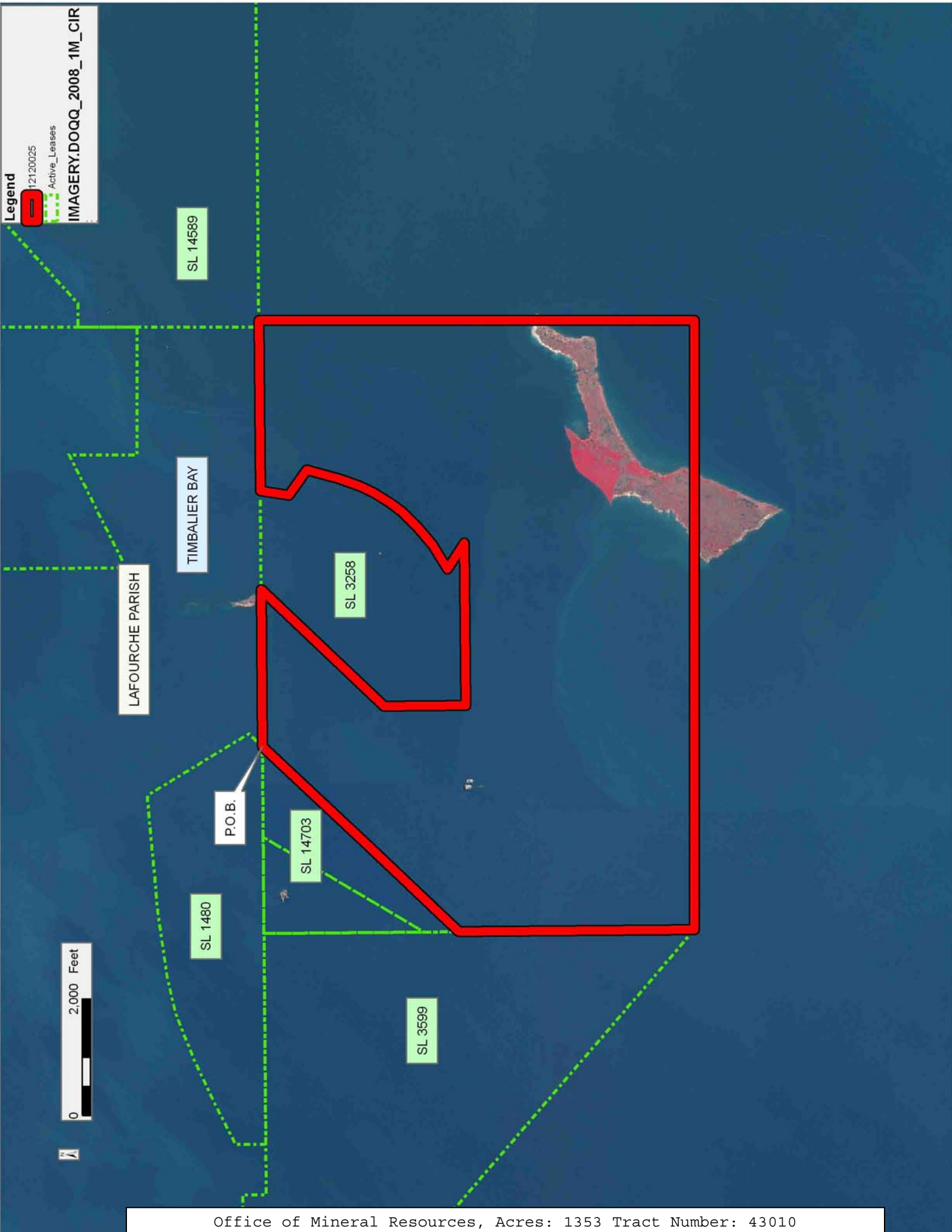
NOTE: The above description of the Tract nominated for lease has been provided and corrected, where required, exclusively by the nomination party. Any mineral lease selected from this Tract and awarded by the Louisiana State Mineral and Energy Board shall be without warranty of any kind, either express, implied, or statutory, including, but not limited to, the implied warranties of merchantability and fitness for a particular purpose. Should the mineral lease awarded by the Louisiana State Mineral and Energy Board be subsequently modified, cancelled or abrogated due to the existence of conflicting leases, operating agreements, private claims or other future obligations or conditions which may affect all or any portion of the leased Tract, it shall not relieve the Lessee of the obligation to pay any bonus due thereon to the Louisiana State Mineral and Energy Board, nor shall the Louisiana State Mineral and Energy Board be obligated to refund any consideration paid by the Lessor prior to such modification, cancellation, or abrogation, including, but not limited to, bonuses, rentals and royalties.

NOTE: The State of Louisiana does hereby reserve, and this lease shall be subject to, the imprescriptible right of surface use in the nature of a servitude in favor of the Department of Natural Resources, including its Offices and Commissions, for the sole purpose of implementing, constructing, servicing and maintaining approved coastal zone management and/or restoration projects. Utilization of any and all rights derived under this lease by the mineral lessee, its agents, successors or assigns, shall not interfere with nor hinder the reasonable surface use by the Department of Natural Resources, its Offices or Commissions, as herein above reserved.



Applicant: CYPRESS ENERGY CORPORATION

Bidder	Cash Payment	Price/ Acre	Rental	Oil	Gas	Other



**TRACT 43011 - Terrebonne Parish, Louisiana**

All of the lands now or formerly constituting the beds and bottoms of all water bodies of every nature and description as to which title is vested in the State of Louisiana, together with all islands arising therein and other lands formed by accretion or by reliction, where allowed by law, excepting tax adjudicated lands, and not presently under mineral lease on December 12, 2012, situated in Terrebonne Parish, Louisiana, and more particularly described as follows: Beginning at a point on the South boundary of State Lease No. 724, as amended having Coordinates of X = 2,170,731.67 and Y = 193,741.42; thence North 89 degrees 43 minutes 25 seconds East 16,114.98 feet along the South boundary of said State Lease No. 724 to a point being its Southeast corner having Coordinates of X = 2,186,846.46 and Y = 193,819.16; thence South 13,699.89 feet to a point having Coordinates of X = 2,186,846.46 and Y = 180,119.27; thence West 16,114.79 feet to a point having Coordinates of X = 2,170,731.67 and Y = 180,119.27; thence North 13,622.15 feet to the point of beginning, **LESS AND EXCEPT** any right, title, and interest in lands owned by and not under lease from the State of Louisiana, on behalf of the Terrebonne Parish School Board, situated in Section 16, Township 22 South, Range 17 East, Terrebonne Parish, Louisiana, contained within the above described tract, containing approximately **2,230 acres**, all as more particularly outlined on a plat on file in the Office of Mineral Resources, Department of Natural Resources. All bearings, distances and coordinates are based on Louisiana Coordinate System of 1927, (North or South Zone), where applicable.

NOTE: The above description of the Tract nominated for lease has been provided and corrected, where required, exclusively by the nomination party. Any mineral lease selected from this Tract and awarded by the Louisiana State Mineral and Energy Board shall be without warranty of any kind, either express, implied, or statutory, including, but not limited to, the implied warranties of merchantability and fitness for a particular purpose. Should the mineral lease awarded by the Louisiana State Mineral and Energy Board be subsequently modified, cancelled or abrogated due to the existence of conflicting leases, operating agreements, private claims or other future obligations or conditions which may affect all or any portion of the leased Tract, it shall not relieve the Lessee of the obligation to pay any bonus due thereon to the Louisiana State Mineral and Energy Board, nor shall the Louisiana State Mineral and Energy Board be obligated to refund any consideration paid by the Lessor prior to such modification, cancellation, or abrogation, including, but not limited to, bonuses, rentals and royalties.

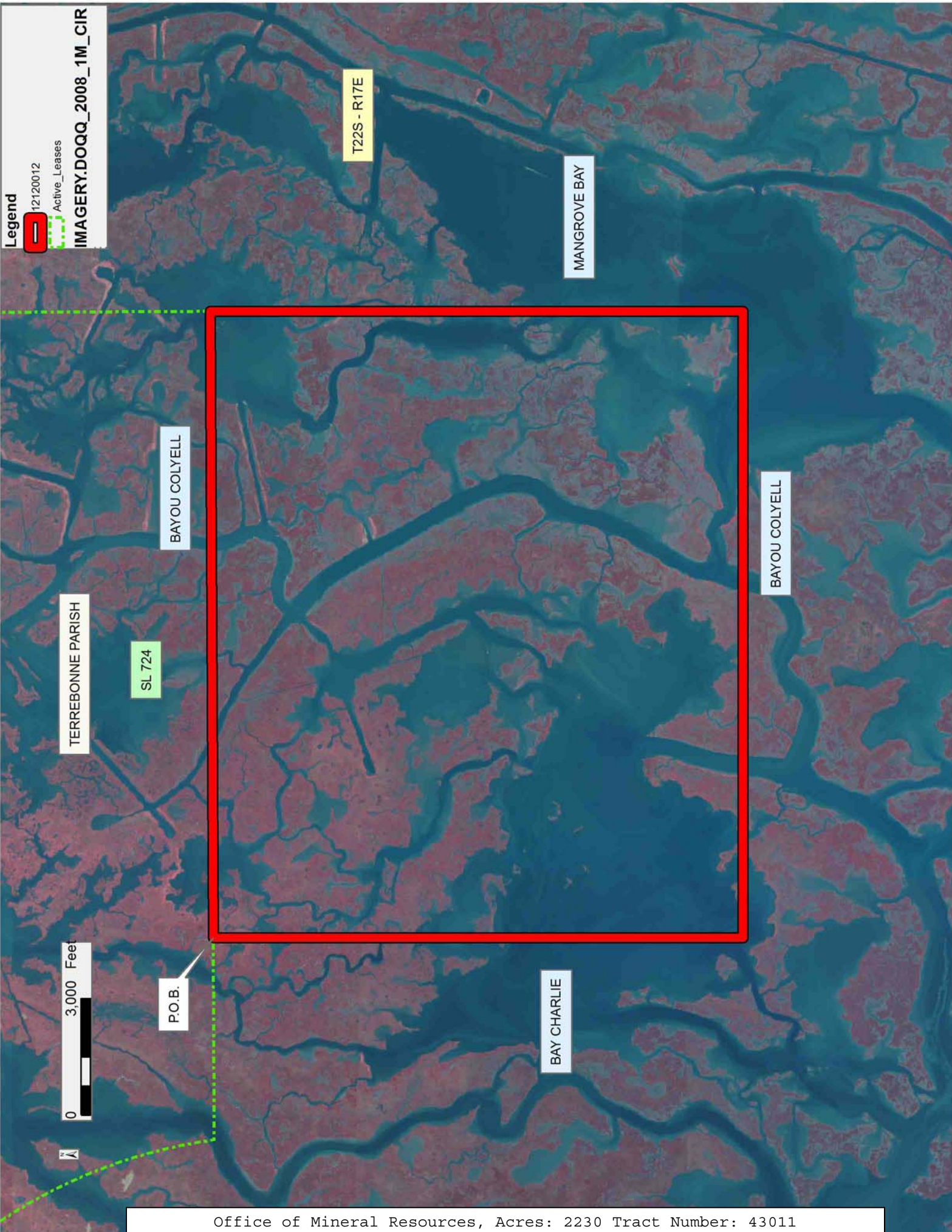
NOTE: The State of Louisiana does hereby reserve, and this lease shall be subject to, the imprescriptible right of surface use in the nature of a servitude in favor of the Department of Natural Resources, including its Offices and Commissions, for the sole purpose of implementing, constructing, servicing and maintaining approved coastal zone management and/or restoration projects. Utilization of any and all rights derived under this lease by the mineral lessee, its agents, successors or assigns,

shall not interfere with nor hinder the reasonable surface use by the Department of Natural Resources, its Offices or Commissions, as herein above reserved.

Applicant: CYPRESS ENERGY CORPORATION

Bidder	Cash Payment	Price/ Acre	Rental	Oil	Gas	Other







**TRACT 43012 - Terrebonne Parish, Louisiana**

All of the lands now or formerly constituting the beds and bottoms of all water bodies of every nature and description as to which title is vested in the State of Louisiana, together with all islands arising therein and other lands formed by accretion or by reliction, where allowed by law, excepting tax adjudicated lands, and not presently under mineral lease on December 12, 2012, situated in Terrebonne Parish, Louisiana, and more particularly described as follows: Beginning at the Southeast corner of State Lease No. 724, as amended having Coordinates of X = 2,186,846.46 and Y = 193,819.16; thence Easterly approximately 14,470 feet to a point on the West boundary of State Lease No. 15785, as amended having a Coordinate of Y = 193,819.16; thence along the boundaries of said State Lease No. 15785 the following courses: South 79 degrees 22 minutes 08 seconds West approximately 380 feet, South 74 degrees 46 minutes 10 seconds West 214.23 feet, South 64 degrees 39 minutes 17 seconds West 233.40 and South 55 degrees 53 minutes 00 seconds West 258.17 feet to its Southwest corner also being a point on the North line of State Lease No. 16790; thence along the boundary of said State Lease No. 16790 the following courses: South 55 degrees 53 minutes 00 seconds West approximately 16 feet to a point having Coordinates of X = 2,200,291.43 and Y = 193,451.06, South 43 degrees 06 minutes 44 seconds West 183.12 feet to a point having Coordinates of X = 2,200,166.28 and Y = 193,317.38, South 33 degrees 05 minutes 22 seconds West 1,040.26 feet to a point having Coordinates of X = 2,199,598.35 and Y = 192,445.83, South 27 degrees 28 minutes 38 seconds West 558.67 feet to a point having Coordinates of X = 2,199,340.59 and Y = 191,950.18, South 21 degrees 31 minutes 34 seconds West 172.46 feet to a point having Coordinates of X = 2,199,277.31 and Y = 191,789.75, South 14 degrees 09 minutes 53 seconds West 284.46 feet to a point having Coordinates of X = 2,199,207.70 and Y = 191,513.94, South 05 degrees 14 minutes 13 seconds West 273.45 feet to a point having Coordinates of X = 2,199,182.74 and Y = 191,241.63, South 00 degrees 29 minutes 36 seconds East 162.55 feet to a point having Coordinates of X = 2,199,184.14 and Y = 191,079.08, South 06 degrees 13 minutes 17 seconds East 350.36 feet to a point having Coordinates of X = 2,199,222.10 and Y = 190,730.79, South 09 degrees 28 minutes 14 seconds East 891.00 feet to a point having Coordinates of X = 2,199,368.71 and Y = 189,851.93, South 40 degrees 33 minutes 29 seconds East 1,842.76 feet to a point having Coordinates of X = 2,200,566.90 and Y = 188,451.90, South 44 degrees 58 minutes 35 seconds East 68.83 feet to a point having Coordinates of X = 2,200,615.55 and Y = 188,403.21, South 62 degrees 29 minutes 17 seconds East 74.17 feet to a point having Coordinates of X = 2,200,681.33 and Y = 188,368.94 and South 83 degrees 56 minutes 51 seconds East 419.78 feet to a point having Coordinates of X = 2,201,098.78 and Y = 188,324.68; thence South 14 degrees 18 minutes 25 seconds West 8,468.04 feet to a point having Coordinates of X = 2,199,006.20 and Y = 180,119.27; thence West 12,159.74 feet to a point having Coordinates of X = 2,186,846.46 and Y = 180,119.27; thence North 13,699.89 feet to the point of beginning, **LESS AND EXCEPT** any right, title, and interest in lands owned by and not under lease from the State of Louisiana, on behalf of the Terrebonne Parish School Board,

situated in Section 16, Township 22 South, Range 17 East, Terrebonne Parish, Louisiana, contained within the above described tract, containing approximately **1,558 acres**, all as more particularly outlined on a plat on file in the Office of Mineral Resources, Department of Natural Resources. All bearings, distances and coordinates are based on Louisiana Coordinate System of 1927, (North or South Zone), where applicable.

NOTE: The above description of the Tract nominated for lease has been provided and corrected, where required, exclusively by the nomination party. Any mineral lease selected from this Tract and awarded by the Louisiana State Mineral and Energy Board shall be without warranty of any kind, either express, implied, or statutory, including, but not limited to, the implied warranties of merchantability and fitness for a particular purpose. Should the mineral lease awarded by the Louisiana State Mineral and Energy Board be subsequently modified, cancelled or abrogated due to the existence of conflicting leases, operating agreements, private claims or other future obligations or conditions which may affect all or any portion of the leased Tract, it shall not relieve the Lessee of the obligation to pay any bonus due thereon to the Louisiana State Mineral and Energy Board, nor shall the Louisiana State Mineral and Energy Board be obligated to refund any consideration paid by the Lessor prior to such modification, cancellation, or abrogation, including, but not limited to, bonuses, rentals and royalties.

NOTE: The State of Louisiana does hereby reserve, and this lease shall be subject to, the imprescriptible right of surface use in the nature of a servitude in favor of the Department of Natural Resources, including its Offices and Commissions, for the sole purpose of implementing, constructing, servicing and maintaining approved coastal zone management and/or restoration projects. Utilization of any and all rights derived under this lease by the mineral lessee, its agents, successors or assigns, shall not interfere with nor hinder the reasonable surface use by the Department of Natural Resources, its Offices or Commissions, as herein above reserved.

Applicant: CYPRESS ENERGY CORPORATION

Bidder	Cash Payment	Price/ Acre	Rental	Oil	Gas	Other

