

TRACT 43061 - Portion of Block 113, South Timbalier Area, Revised, Terrebonne Parish, Louisiana

All of the lands now or formerly constituting the beds and bottoms of all water bodies of every nature and description as to which title is vested in the State of Louisiana, together with all islands arising therein and other lands formed by accretion or by reliction, where allowed by law, excepting tax adjudicated lands, and not presently under mineral lease on February 13, 2013, situated in Terrebonne Parish, Louisiana, and more particularly described as follows: Beginning at a point being the Southeast corner of State Lease No. 20263 having Coordinates of X = 2,215,162.18 and Y = 173,177.40, said point also being the Southwest corner of State Lease No. 18167, as amended; thence North 89 degrees 38 minutes 19 seconds East 5,280.00 feet along the Southern boundary of said State Lease No. 18167, to a point having Coordinates of X = 2,220,442.08 and Y = 173,210.70; thence South 00 degrees 10 minutes 26 seconds East 2,610.71 feet to a point having Coordinates of X = 2,220,450.00 and Y = 170,600.00, said point being the Northeast corner of State Lease No. 16510, as amended; thence along the Northern and Western boundaries of said State Lease No. 16510 the following courses: West 7,900.00 feet to a point being its Northwest corner having Coordinates of X = 2,212,550.00 and Y = 170,600.00, and South 2,710.00 feet to a point being its Southwest corner having Coordinates of X = 2,212,550.00 and Y = 167,890.00, said point also being the Northwest corner of State Lease No. 16511; thence Southerly approximately 300 feet along the Western boundary of said State Lease No. 16511 to a point being its Southwest corner having a Coordinate of X = 2,212,550.00; thence Westerly 7,670.47 feet to a point having Coordinates of X = 2,204,879.53 and Y = 167,593.73; thence Northerly approximately 4,180 feet to a Southwest corner of said State Lease No. 199, as amended; thence along the Southern boundary of said State Lease No. 199 the following courses: Easterly approximately 5,354 feet, Northerly approximately 1,400 feet, and Easterly approximately 4,230 feet to a point being the Southwest corner of said State Lease No. 20263; thence Easterly approximately 680 feet along the Southern boundary of said State Lease No. 20263 to the point of beginning, **LESS AND EXCEPT** that portion, if any, of State Lease No. 199, as amended, and State Lease No. 16511, which may lie within the above described tract, containing approximately **1,280 acres**, all as more particularly outlined on a plat on file in the Office of Mineral Resources, Department of Natural Resources. All bearings, distances and coordinates are based on Louisiana Coordinate System of 1927, (North or South Zone), where applicable.

NOTE: The above description of the Tract nominated for lease has been provided and corrected, where required, exclusively by the nomination party. Any mineral lease selected from this Tract and awarded by the Louisiana State Mineral and Energy Board shall be without warranty of any kind, either express, implied, or statutory, including, but not limited to, the implied warranties of merchantability and fitness for a particular purpose. Should the mineral lease awarded by the Louisiana State Mineral and Energy Board be subsequently modified, cancelled or abrogated due to

the existence of conflicting leases, operating agreements, private claims or other future obligations or conditions which may affect all or any portion of the leased Tract, it shall not relieve the Lessee of the obligation to pay any bonus due thereon to the Louisiana State Mineral and Energy Board, nor shall the Louisiana State Mineral and Energy Board be obligated to refund any consideration paid by the Lessor prior to such modification, cancellation, or abrogation, including, but not limited to, bonuses, rentals and royalties.

NOTE: The State of Louisiana does hereby reserve, and this lease shall be subject to, the imprescriptible right of surface use in the nature of a servitude in favor of the Department of Natural Resources, including its Offices and Commissions, for the sole purpose of implementing, constructing, servicing and maintaining approved coastal zone management and/or restoration projects. Utilization of any and all rights derived under this lease by the mineral lessee, its agents, successors or assigns, shall not interfere with nor hinder the reasonable surface use by the Department of Natural Resources, its Offices or Commissions, as herein above reserved.

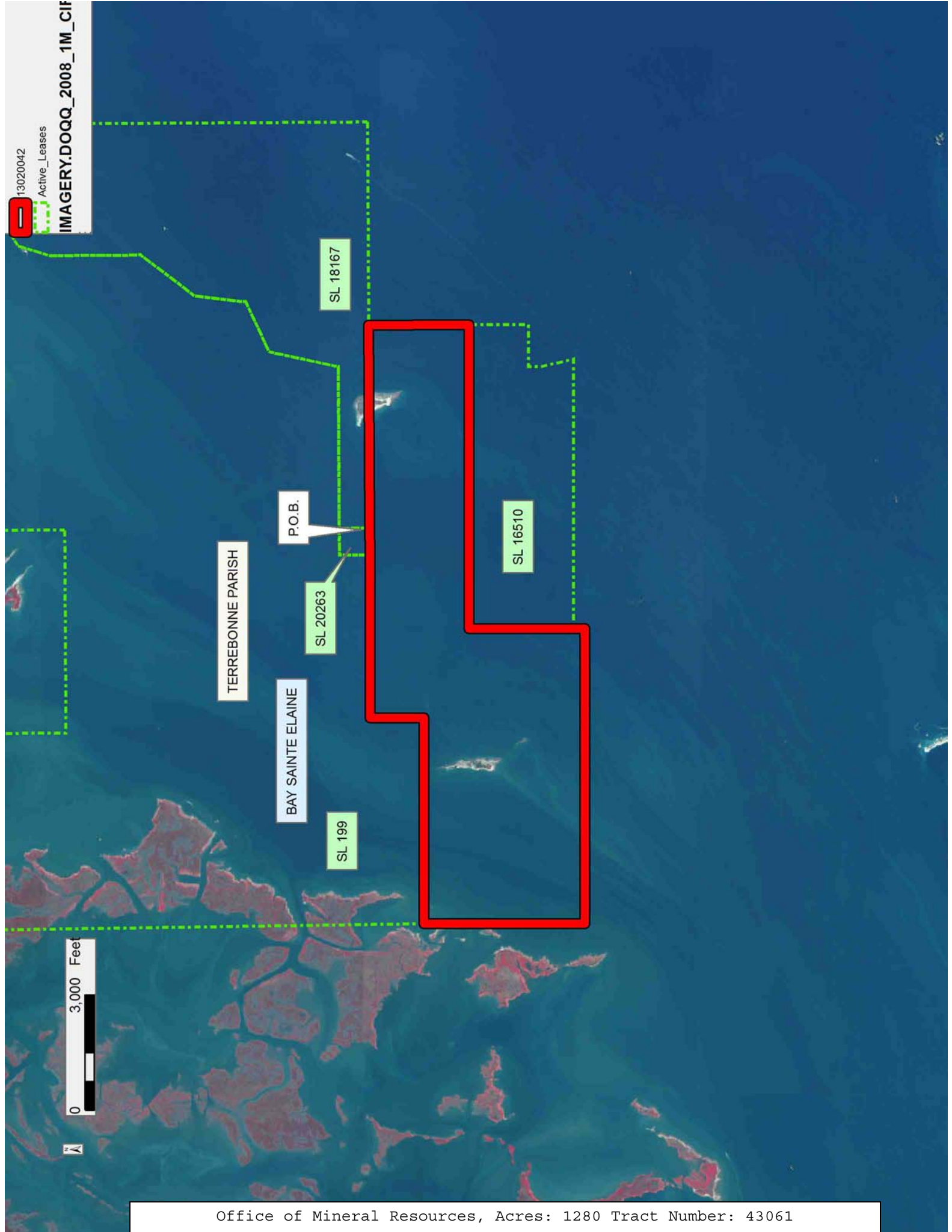
Applicant: ROBERT A. SCHROEDER, INC.

Bidder	Cash Payment	Price/Acre	Rental	Oil	Gas	Other

13020042

Active_Leases

IMAGERY.DOQQ_2008_1M_CIF



TRACT 43062 - Terrebonne Parish, Louisiana

All of the lands now or formerly constituting the beds and bottoms of all water bodies of every nature and description as to which title is vested in the State of Louisiana, together with all islands arising therein and other lands formed by accretion or by reliction, where allowed by law, excepting tax adjudicated lands, and not presently under mineral lease on February 13, 2013, situated in Terrebonne Parish, Louisiana, and more particularly described as follows: Beginning at a point having Coordinates of X = 2,204,879.53 and Y = 167,593.73; thence Easterly approximately 7,670.47 feet to a point having a Coordinate of X = 2,212,550.00, said point being the Southwest corner of said State Lease No. 16511; thence Southeasterly approximately 586 feet along the Southern boundary of said State Lease No. 16511 to a point being the Northwest corner of State Lease No. 16705, as amended, having a Coordinate of X = 2,213,128.02; thence along the Western and Southern boundaries of said State Lease No. 16705, the following courses: Southerly approximately 2,290 feet and Easterly approximately 6,143 feet to a point of intersection with the Western boundary of State Lease No. 188, as amended, having Coordinates of X = 2,219,270.51 and Y = 165,241.83; thence South 00 degrees 20 minutes 05 seconds East 1,851.00 feet along the Western boundary of said State Lease No. 188, to a point being the Northeast corner of State Lease No. 20903 having Coordinates of X = 2,219,281.32 and Y = 163,390.86; thence along the Northern and Western and boundaries of said State Lease No. 20903 the following courses: South 79 degrees 36 minutes 17 seconds West 159.94 feet to a point having Coordinates of X = 2,219,124.00 and Y = 163,362.00; South 77 degrees 45 minutes 13 seconds West 396.01 feet to a point having Coordinates of X = 2,218,737.00 and Y = 163,278.00; South 77 degrees 46 minutes 22 seconds West 453.28 feet to a point having Coordinates of X = 2,218,294.00 and Y = 163,182.00; South 04 degrees 11 minutes 06 seconds East 657.75 feet to a point having Coordinates of X = 2,218,342.00 and Y = 162,526.00; South 15 degrees 29 minutes 09 seconds East 239.70 feet to a point having Coordinates of X = 2,218,406.00 and Y = 162,295.00; South 13 degrees 03 minutes 47 seconds East 314.13 feet to a point having Coordinates of X = 2,218,477.00 and Y = 161,989.00; South 19 degrees 39 minutes 14 seconds East 356.79 feet to a point having Coordinates of X = 2,218,597.00 and Y = 161,653.00; South 23 degrees 29 minutes 30 seconds East 333.65 feet to a point having Coordinates of X = 2,218,730.00 and Y = 161,347.00; South 33 degrees 52 minutes 15 seconds East 351.68 feet to a point having Coordinates of X = 2,218,926.00 and Y = 161,055.00; and South 44 degrees 32 minutes 48 seconds East 529.12 feet to a point being its Southernmost corner having Coordinates of X = 2,219,297.17 and Y = 160,677.91, said point also being on said Western boundary of said State Lease No. 188; thence along the Western and Northern boundaries of said State Lease No. 188, as amended, the following courses: South 00 degrees 20 minutes 05 seconds East 716.00 feet to a point having Coordinates of X = 2,219,301.35 and Y = 159,961.92 and South 89 degrees 39 minutes 55 seconds West 6,387.50 feet to a point being the Northeast corner of State Lease No. 19477 having Coordinates of X = 2,212,913.96 and Y = 159,924.60; thence South 89 degrees 39 minutes 55 seconds West 4,172.50 feet along the

Northern boundary of said State Lease No. 19477 to a point being its Northwest corner having Coordinates of X = 2,208,741.53 and Y = 159,900.12; thence North 3,759.35 feet to a point having Coordinates of X = 2,208,741.53 and Y = 163,659.47; thence West 3,862.00 feet to a point having Coordinates of X = 2,204,879.53 and Y = 163,659.47; thence North 3,934.26 feet to the point beginning, containing approximately **1,826 acres**, all as more particularly outlined on a plat on file in the Office of Mineral Resources, Department of Natural Resources. All bearings, distances and coordinates are based on Louisiana Coordinate System of 1927, (North or South Zone), where applicable.

NOTE: The above description of the Tract nominated for lease has been provided and corrected, where required, exclusively by the nomination party. Any mineral lease selected from this Tract and awarded by the Louisiana State Mineral and Energy Board shall be without warranty of any kind, either express, implied, or statutory, including, but not limited to, the implied warranties of merchantability and fitness for a particular purpose. Should the mineral lease awarded by the Louisiana State Mineral and Energy Board be subsequently modified, cancelled or abrogated due to the existence of conflicting leases, operating agreements, private claims or other future obligations or conditions which may affect all or any portion of the leased Tract, it shall not relieve the Lessee of the obligation to pay any bonus due thereon to the Louisiana State Mineral and Energy Board, nor shall the Louisiana State Mineral and Energy Board be obligated to refund any consideration paid by the Lessor prior to such modification, cancellation, or abrogation, including, but not limited to, bonuses, rentals and royalties.

NOTE: The State of Louisiana does hereby reserve, and this lease shall be subject to, the imprescriptible right of surface use in the nature of a servitude in favor of the Department of Natural Resources, including its Offices and Commissions, for the sole purpose of implementing, constructing, servicing and maintaining approved coastal zone management and/or restoration projects. Utilization of any and all rights derived under this lease by the mineral lessee, its agents, successors or assigns, shall not interfere with nor hinder the reasonable surface use by the Department of Natural Resources, its Offices or Commissions, as herein above reserved.

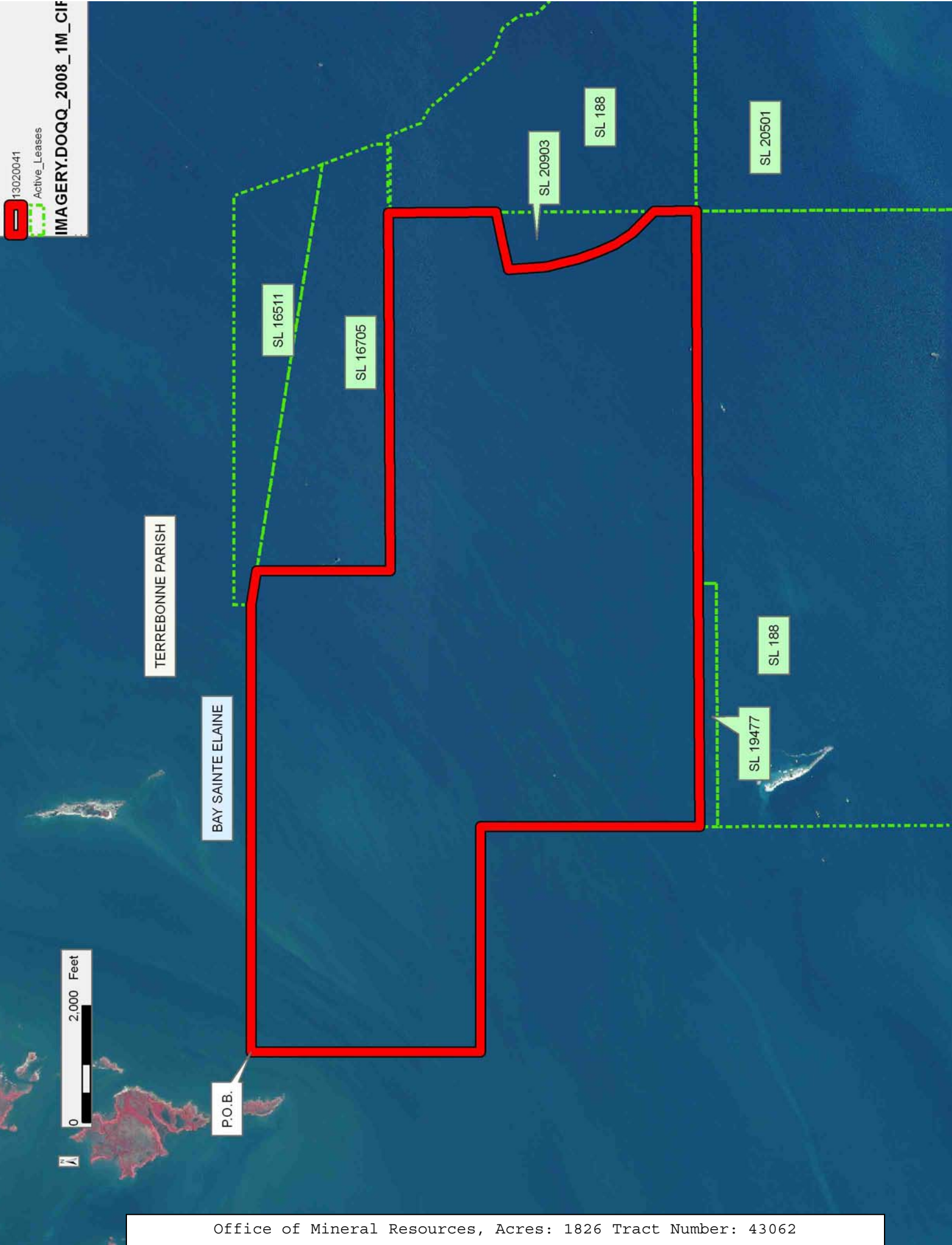
Applicant: ROBERT A. SCHROEDER, INC.

Bidder	Cash Payment	Price/Acre	Rental	Oil	Gas	Other

13020041

Active_Leases

IMAGERY.DOQQ_2008_1M_CIF



TERREBONNE PARISH

BAY SAINTE ELAINE

P.O.B.

SL 16511

SL 16705

SL 20903

SL 188

SL 20501

SL 19477

SL 188

0 2,000 Feet

N

TRACT 43063 - Portion of Blocks 118, 119, and 120, South Timbalier Area, Revised, Terrebonne Parish, Louisiana

All of the lands now or formerly constituting the beds and bottoms of all water bodies of every nature and description as to which title is vested in the State of Louisiana, together with all islands arising therein and other lands formed by accretion or by reliction, where allowed by law, excepting tax adjudicated lands, and not presently under mineral lease on February 13, 2013, situated in Terrebonne Parish, Louisiana, and more particularly described as follows: Beginning at the Northeast corner of State Lease No. 16942, having Coordinates of X = 2,233,340.06 and Y = 156,944.29; thence West 2,568.34 feet along the Northern boundary of said State Lease No. 16942 to a point having Coordinates of X = 2,230,771.72 and Y = 156,944.29; thence North 1.16 feet to a point on the Eastern boundary of State Lease No. 2620, as amended, having Coordinates X = 2,230,771.72 of Y = 156,945.45; thence North 19 degrees 57 minutes 05 seconds West 5,937.93 feet along said Eastern boundary of said State Lease No. 2620 to a point having Coordinates of X = 2,228,745.56 and Y = 162,527.00; thence East 4,660.44 feet to a point having Coordinates of X = 2,233,406.00 and Y = 162,527.00; thence South 00 degrees 40 minutes 36 seconds West 5,583.10 feet to the point of beginning, containing approximately **463.20 acres**, all as more particularly outlined on a plat on file in the Office of Mineral Resources, Department of Natural Resources. All bearings, distances and coordinates are based on Louisiana Coordinate System of 1927, (North or South Zone), where applicable.

NOTE: The above description of the Tract nominated for lease has been provided and corrected, where required, exclusively by the nomination party. Any mineral lease selected from this Tract and awarded by the Louisiana State Mineral and Energy Board shall be without warranty of any kind, either express, implied, or statutory, including, but not limited to, the implied warranties of merchantability and fitness for a particular purpose. Should the mineral lease awarded by the Louisiana State Mineral and Energy Board be subsequently modified, cancelled or abrogated due to the existence of conflicting leases, operating agreements, private claims or other future obligations or conditions which may affect all or any portion of the leased Tract, it shall not relieve the Lessee of the obligation to pay any bonus due thereon to the Louisiana State Mineral and Energy Board, nor shall the Louisiana State Mineral and Energy Board be obligated to refund any consideration paid by the Lessor prior to such modification, cancellation, or abrogation, including, but not limited to, bonuses, rentals and royalties.

NOTE: The State of Louisiana does hereby reserve, and this lease shall be subject to, the imprescriptible right of surface use in the nature of a servitude in favor of the Department of Natural Resources, including its Offices and Commissions, for the sole purpose of implementing, constructing, servicing and maintaining approved coastal zone management and/or restoration projects. Utilization of any and all rights derived under this lease by the mineral lessee, its agents, successors or assigns,

shall not interfere with nor hinder the reasonable surface use by the Department of Natural Resources, its Offices or Commissions, as herein above reserved.

NOTE: It appears, according to our records, that a portion of this Tract is located within the restrictive safety fairway area as set out by the Corps of Engineers, U.S. Army and/or the restrictive anchorage area as set out by the U.S. Coast Guard.

Applicant: ROBERT A. SCHROEDER, INC.

Bidder	Cash Payment	Price/Acre	Rental	Oil	Gas	Other

Legend

13020044

Blocks

Active_Leases

