

**TRACT 43108 - Catahoula and Concordia Parishes, Louisiana**

All of the lands now or formerly constituting the beds and bottoms of all water bodies of every nature and description as to which title is vested in the State of Louisiana, together with all islands arising therein and other lands formed by accretion or by reliction, where allowed by law, excepting tax adjudicated lands, and not presently under mineral lease on March 13, 2013, situated in Catahoula and Concordia Parishes, Louisiana, and more particularly described as follows: Beginning at a point having Coordinates of X = 2,200,005.10 and Y = 277,184.95; thence East 7,000.00 feet to a point having Coordinates of X = 2,207,005.10 and Y = 277,184.95; thence South 9,000.00 feet to a point having Coordinates of X = 2,207,005.10 and Y = 268,184.95; thence West 7,000.00 feet to a point having Coordinates of X = 2,200,005.10 and Y = 268,184.95; thence North 9,000.00 feet to the point of beginning, containing approximately **138 acres**, all as more particularly outlined on a plat on file in the Office of Mineral Resources, Department of Natural Resources. All bearings, distances and coordinates are based on Louisiana Coordinate System of 1927, (North or South Zone), where applicable.

NOTE: The above description of the Tract nominated for lease has been provided and corrected, where required, exclusively by the nomination party. Any mineral lease selected from this Tract and awarded by the Louisiana State Mineral and Energy Board shall be without warranty of any kind, either express, implied, or statutory, including, but not limited to, the implied warranties of merchantability and fitness for a particular purpose. Should the mineral lease awarded by the Louisiana State Mineral and Energy Board be subsequently modified, cancelled or abrogated due to the existence of conflicting leases, operating agreements, private claims or other future obligations or conditions which may affect all or any portion of the leased Tract, it shall not relieve the Lessee of the obligation to pay any bonus due thereon to the Louisiana State Mineral and Energy Board, nor shall the Louisiana State Mineral and Energy Board be obligated to refund any consideration paid by the Lessor prior to such modification, cancellation, or abrogation, including, but not limited to, bonuses, rentals and royalties.

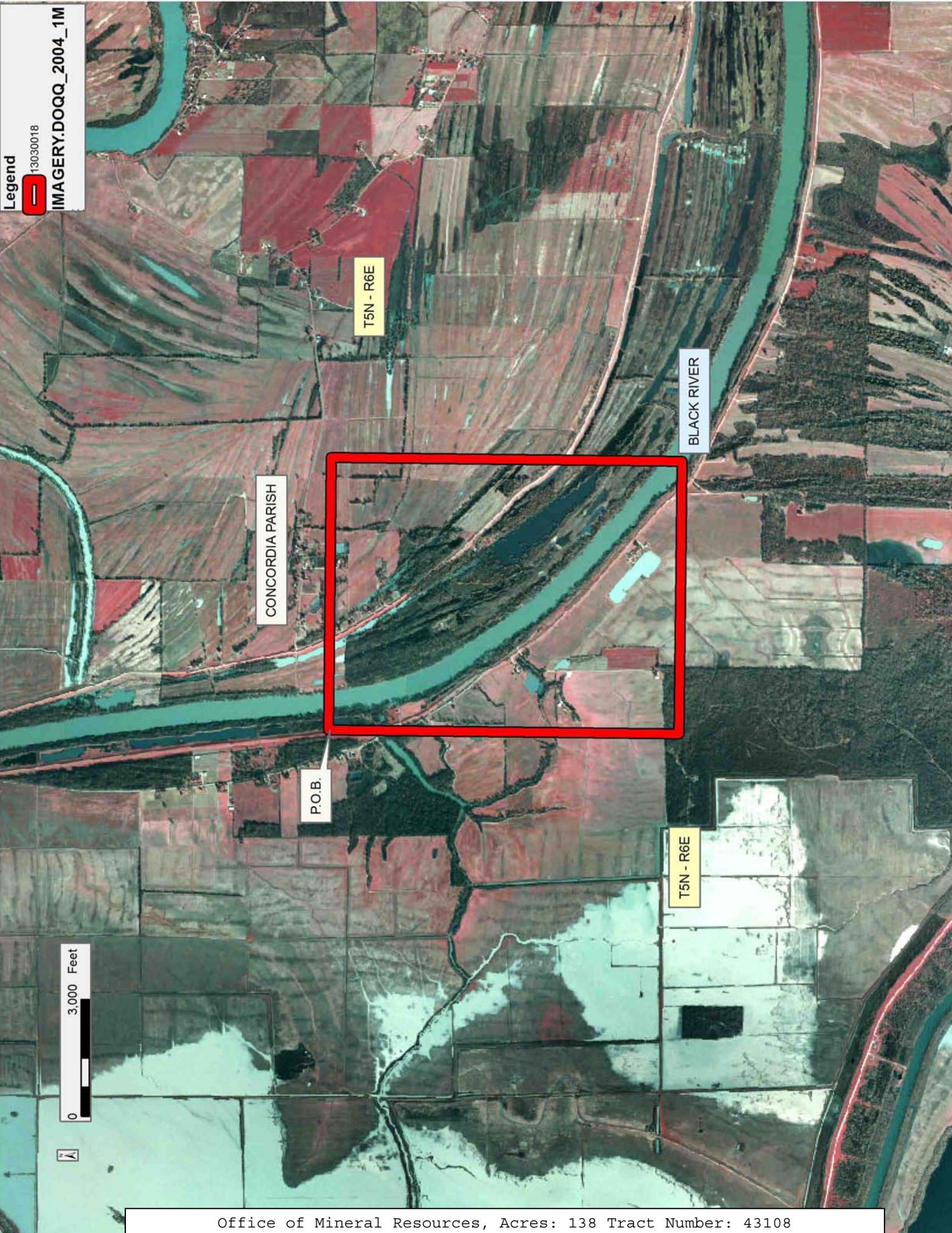
Applicant: THEOPHILUS OIL, GAS & LAND SERVICES, LLC

Bidder	Cash Payment	Price/Acre	Rental	Oil	Gas	Other

Legend

13030018

IMAGERY.DOQQ\_2004\_1M



**TRACT 43109 - Jefferson Davis Parish, Louisiana**

All of the lands now or formerly constituting the beds and bottoms of all water bodies of every nature and description as to which title is vested in the State of Louisiana, together with all islands arising therein and other lands formed by accretion or by reliction, where allowed by law, excepting tax adjudicated lands, and not presently under mineral lease on March 13, 2013, situated in Jefferson Davis Parish, Louisiana, and more particularly described as follows: Beginning at a point being the Northwest corner of State Lease No. 20825 having Coordinates of X = 1,491,875.00 and Y = 632,964.00; thence South 2,518.00 feet along the West line of said State Lease No. 20825 to its Southwest corner having Coordinates of X = 1,491,875.00 and Y = 630,446.00; thence West 11,500.00 feet to a point having Coordinates of X = 1,480,375.00 and Y = 630,446.00; thence North 10,560.00 feet to a point having Coordinates of X = 1,480,375.00 and Y = 641,006.00; thence East 11,500.00 feet to a point having Coordinates of X = 1,491,875.00 and Y = 641,006.00; thence South 8,042.00 feet to the point of beginning, containing approximately **22 acres**, all as more particularly outlined on a plat on file in the Office of Mineral Resources, Department of Natural Resources. All bearings, distances and coordinates are based on Louisiana Coordinate System of 1927, (North or South Zone), where applicable.

NOTE: The above description of the Tract nominated for lease has been provided and corrected, where required, exclusively by the nomination party. Any mineral lease selected from this Tract and awarded by the Louisiana State Mineral and Energy Board shall be without warranty of any kind, either express, implied, or statutory, including, but not limited to, the implied warranties of merchantability and fitness for a particular purpose. Should the mineral lease awarded by the Louisiana State Mineral and Energy Board be subsequently modified, cancelled or abrogated due to the existence of conflicting leases, operating agreements, private claims or other future obligations or conditions which may affect all or any portion of the leased Tract, it shall not relieve the Lessee of the obligation to pay any bonus due thereon to the Louisiana State Mineral and Energy Board, nor shall the Louisiana State Mineral and Energy Board be obligated to refund any consideration paid by the Lessor prior to such modification, cancellation, or abrogation, including, but not limited to, bonuses, rentals and royalties.

Applicant: HEP ENERGY, INC.

Bidder	Cash Payment	Price/Acre	Rental	Oil	Gas	Other

Legend

13030006



Active\_Leases



IMAGERY.DOQQ\_2008\_1M\_CIR

0 3,000 Feet



JEFFERSON DAVIS PARISH

T7S - R6W



P.O.B.

SL 20825

T8S - R6W

BAYOU SERPENT

**TRACT 43110 - Cameron Parish, Louisiana**

All of the lands now or formerly constituting the beds and bottoms of all water bodies of every nature and description as to which title is vested in the State of Louisiana, together with all islands arising therein and other lands formed by accretion or by reliction, where allowed by law, excepting tax adjudicated lands, and not presently under mineral lease on March 13, 2013, situated in Cameron Parish, Louisiana, and more particularly described as follows: Beginning at a point having Coordinates of X = 1,509,151.77 and Y = 423,148.93; thence South 88 degrees 38 minutes 55 seconds East 5,521.54 feet to a point having Coordinates of X = 1,514,671.77 and Y = 423,018.70; thence South 01 degrees 54 minutes 50 seconds West 5,259.19 feet to a point having Coordinates of X = 1,514,496.12 and Y = 417,762.45; thence North 88 degrees 37 minutes 30 seconds West 5,488.99 feet to a point having Coordinates of X = 1,509,008.71 and Y = 417,894.15; thence North 01 degrees 33 minutes 34 seconds East 5,256.73 feet to the point of beginning, containing approximately **70 acres**, all as more particularly outlined on a plat on file in the Office of Mineral Resources, Department of Natural Resources. All bearings, distances and coordinates are based on Louisiana Coordinate System of 1927, (North or South Zone), where applicable.

NOTE: The above description of the Tract nominated for lease has been provided and corrected, where required, exclusively by the nomination party. Any mineral lease selected from this Tract and awarded by the Louisiana State Mineral and Energy Board shall be without warranty of any kind, either express, implied, or statutory, including, but not limited to, the implied warranties of merchantability and fitness for a particular purpose. Should the mineral lease awarded by the Louisiana State Mineral and Energy Board be subsequently modified, cancelled or abrogated due to the existence of conflicting leases, operating agreements, private claims or other future obligations or conditions which may affect all or any portion of the leased Tract, it shall not relieve the Lessee of the obligation to pay any bonus due thereon to the Louisiana State Mineral and Energy Board, nor shall the Louisiana State Mineral and Energy Board be obligated to refund any consideration paid by the Lessor prior to such modification, cancellation, or abrogation, including, but not limited to, bonuses, rentals and royalties.

NOTE: The State of Louisiana does hereby reserve, and this lease shall be subject to, the imprescriptible right of surface use in the nature of a servitude in favor of the Department of Natural Resources, including its Offices and Commissions, for the sole purpose of implementing, constructing, servicing and maintaining approved coastal zone management and/or restoration projects. Utilization of any and all rights derived under this lease by the mineral lessee, its agents, successors or assigns, shall not interfere with nor hinder the reasonable surface use by the Department of Natural Resources, its Offices or Commissions, as herein above reserved.

Applicant: GRAY PRODUCTION COMPANY

Bidder	Cash Payment	Price/Acre	Rental	Oil	Gas	Other

Legend

13030009

IMAGERY.DOQQ\_2008\_1M\_CIR

CAMERON PARISH

MERMENTAU RIVER

P.O.B.

LITTLE CHENIER BAYOU

0 2,000 Feet





**TRACT 43111 - Cameron Parish, Louisiana**

All of the lands now or formerly constituting the beds and bottoms of all water bodies of every nature and description as to which title is vested in the State of Louisiana, together with all islands arising therein and other lands formed by accretion or by reliction, where allowed by law, excepting tax adjudicated lands, and not presently under mineral lease on March 13, 2013, situated in Cameron Parish, Louisiana, and more particularly described as follows: Beginning at a point having Coordinates of X = 1,503,662.02 and Y = 418,022.48; thence South 88 degrees 37 minutes 30 seconds East 5,348.23 feet to a point having Coordinates of X = 1,509,008.71 and Y = 417,894.15; thence South 01 degrees 33 minutes 34 seconds West 5,279.60 feet to a point having Coordinates of X = 1,508,865.04 and Y = 412,616.50; thence North 88 degrees 40 minutes 32 seconds West 5,344.60 feet to a point having Coordinates of X = 1,503,521.87 and Y = 412,740.04; thence North 01 degrees 31 minutes 11 seconds East 5,284.30 feet to the point of beginning, containing approximately **37 acres**, all as more particularly outlined on a plat on file in the Office of Mineral Resources, Department of Natural Resources. All bearings, distances and coordinates are based on Louisiana Coordinate System of 1927, (North or South Zone), where applicable.

NOTE: The above description of the Tract nominated for lease has been provided and corrected, where required, exclusively by the nomination party. Any mineral lease selected from this Tract and awarded by the Louisiana State Mineral and Energy Board shall be without warranty of any kind, either express, implied, or statutory, including, but not limited to, the implied warranties of merchantability and fitness for a particular purpose. Should the mineral lease awarded by the Louisiana State Mineral and Energy Board be subsequently modified, cancelled or abrogated due to the existence of conflicting leases, operating agreements, private claims or other future obligations or conditions which may affect all or any portion of the leased Tract, it shall not relieve the Lessee of the obligation to pay any bonus due thereon to the Louisiana State Mineral and Energy Board, nor shall the Louisiana State Mineral and Energy Board be obligated to refund any consideration paid by the Lessor prior to such modification, cancellation, or abrogation, including, but not limited to, bonuses, rentals and royalties.

NOTE: The State of Louisiana does hereby reserve, and this lease shall be subject to, the imprescriptible right of surface use in the nature of a servitude in favor of the Department of Natural Resources, including its Offices and Commissions, for the sole purpose of implementing, constructing, servicing and maintaining approved coastal zone management and/or restoration projects. Utilization of any and all rights derived under this lease by the mineral lessee, its agents, successors or assigns, shall not interfere with nor hinder the reasonable surface use by the Department of Natural Resources, its Offices or Commissions, as herein above reserved.

Applicant: GRAY PRODUCTION COMPANY

Bidder	Cash Payment	Price/Acre	Rental	Oil	Gas	Other

Legend

13030013

IMAGERY.DOQQ\_2008\_1M\_CIR

0 2,000 Feet



CAMERON PARISH

P.O.B.

BIG MOUTH BAYOU

MERMENTAU RIVER



**TRACT 43112 - Cameron Parish, Louisiana**

All of the lands now or formerly constituting the beds and bottoms of all water bodies of every nature and description as to which title is vested in the State of Louisiana, together with all islands arising therein and other lands formed by accretion or by reliction, where allowed by law, excepting tax adjudicated lands, and not presently under mineral lease on March 13, 2013, situated in Cameron Parish, Louisiana, and more particularly described as follows: Beginning at a point having Coordinates of X = 1,509,008.71 and Y = 417,894.15; thence South 88 degrees 37 minutes 30 seconds East 5,488.99 feet to a point having Coordinates of X = 1,514,496.12 and Y = 417,762.45; thence South 01 degrees 54 minutes 50 seconds West 10,536.91 feet to a point having Coordinates of X = 1,514,144.22 and Y = 407,231.42; thence North 88 degrees 39 minutes 58 seconds West 5,423.81 feet to a point having Coordinates of X = 1,508,721.88 and Y = 407,357.67; thence North 01 degrees 33 minutes 34 seconds East 10,540.38 feet to the point of beginning, containing approximately **256 acres**, all as more particularly outlined on a plat on file in the Office of Mineral Resources, Department of Natural Resources. All bearings, distances and coordinates are based on Louisiana Coordinate System of 1927, (North or South Zone), where applicable.

NOTE: The above description of the Tract nominated for lease has been provided and corrected, where required, exclusively by the nomination party. Any mineral lease selected from this Tract and awarded by the Louisiana State Mineral and Energy Board shall be without warranty of any kind, either express, implied, or statutory, including, but not limited to, the implied warranties of merchantability and fitness for a particular purpose. Should the mineral lease awarded by the Louisiana State Mineral and Energy Board be subsequently modified, cancelled or abrogated due to the existence of conflicting leases, operating agreements, private claims or other future obligations or conditions which may affect all or any portion of the leased Tract, it shall not relieve the Lessee of the obligation to pay any bonus due thereon to the Louisiana State Mineral and Energy Board, nor shall the Louisiana State Mineral and Energy Board be obligated to refund any consideration paid by the Lessor prior to such modification, cancellation, or abrogation, including, but not limited to, bonuses, rentals and royalties.

NOTE: The State of Louisiana does hereby reserve, and this lease shall be subject to, the imprescriptible right of surface use in the nature of a servitude in favor of the Department of Natural Resources, including its Offices and Commissions, for the sole purpose of implementing, constructing, servicing and maintaining approved coastal zone management and/or restoration projects. Utilization of any and all rights derived under this lease by the mineral lessee, its agents, successors or assigns, shall not interfere with nor hinder the reasonable surface use by the Department of Natural Resources, its Offices or Commissions, as herein above reserved.

Applicant: GRAY PRODUCTION COMPANY

Bidder	Cash Payment	Price/Acre	Rental	Oil	Gas	Other

Legend

13030010

IMAGERY.DOQQ\_2008\_1M\_CIR

CAMERON PARISH

MERMENTAU RIVER

LITTLE PECAN BAYOU

P.O.B.

0 2,000 Feet

BIG MOUTH BAYOU

UPPER MUD LAKE

**TRACT 43113 - Cameron Parish, Louisiana**

All of the lands now or formerly constituting the beds and bottoms of all water bodies of every nature and description as to which title is vested in the State of Louisiana, together with all islands arising therein and other lands formed by accretion or by reliction, where allowed by law, excepting tax adjudicated lands, and not presently under mineral lease on March 13, 2013, situated in Cameron Parish, Louisiana, and more particularly described as follows: Beginning at a point having Coordinates of X = 1,514,496.12 and Y = 417,762.45; thence South 88 degrees 37 minutes 31 seconds East 2,534.70 feet to a point on the boundary of State Lease No. 19072, as amended having Coordinates of X = 1,517,030.10 and Y = 417,701.63; thence along the boundary of said State Lease No. 19072 the following courses and distances: South 01 degrees 27 minutes 50 seconds West 2,823.76 feet and South 88 degrees 33 minutes 02 seconds East 2,942.95 feet to a point having Coordinates of X = 1,519,899.96 and Y = 414,804.35; thence South 01 degrees 46 minutes 27 seconds West 2,442.39 feet to a point having Coordinates of X = 1,519,824.35 and Y = 412,363.13; thence North 88 degrees 40 minutes 32 seconds West 5,505.87 feet to a point having Coordinates of X = 1,514,319.95 and Y = 412,490.38; thence North 01 degrees 54 minutes 50 seconds East 5,275.01 feet to the point of beginning, containing approximately **49 acres**, all as more particularly outlined on a plat on file in the Office of Mineral Resources, Department of Natural Resources. All bearings, distances and coordinates are based on Louisiana Coordinate System of 1927, (North or South Zone), where applicable.

NOTE: The above description of the Tract nominated for lease has been provided and corrected, where required, exclusively by the nomination party. Any mineral lease selected from this Tract and awarded by the Louisiana State Mineral and Energy Board shall be without warranty of any kind, either express, implied, or statutory, including, but not limited to, the implied warranties of merchantability and fitness for a particular purpose. Should the mineral lease awarded by the Louisiana State Mineral and Energy Board be subsequently modified, cancelled or abrogated due to the existence of conflicting leases, operating agreements, private claims or other future obligations or conditions which may affect all or any portion of the leased Tract, it shall not relieve the Lessee of the obligation to pay any bonus due thereon to the Louisiana State Mineral and Energy Board, nor shall the Louisiana State Mineral and Energy Board be obligated to refund any consideration paid by the Lessor prior to such modification, cancellation, or abrogation, including, but not limited to, bonuses, rentals and royalties.

NOTE: The State of Louisiana does hereby reserve, and this lease shall be subject to, the imprescriptible right of surface use in the nature of a servitude in favor of the Department of Natural Resources, including its Offices and Commissions, for the sole purpose of implementing, constructing, servicing and maintaining approved coastal zone management and/or restoration projects. Utilization of any and all rights derived

under this lease by the mineral lessee, its agents, successors or assigns, shall not interfere with nor hinder the reasonable surface use by the Department of Natural Resources, its Offices or Commissions, as herein above reserved.

Applicant: GRAY PRODUCTION COMPANY

Bidder	Cash Payment	Price/Acre	Rental	Oil	Gas	Other



Legend

13030011



Active\_Leases



IMAGERY.DOQQ\_2008\_1M\_CIR

CAMERON PARISH

SL 19072

LITTLE PECAN BAYOU

P.O.B.

LITTLE PECAN LAKE

2,000 Feet

0



**TRACT 43114 - Cameron Parish, Louisiana**

All of the lands now or formerly constituting the beds and bottoms of all water bodies of every nature and description as to which title is vested in the State of Louisiana, together with all islands arising therein and other lands formed by accretion or by reliction, where allowed by law, excepting tax adjudicated lands, and not presently under mineral lease on March 13, 2013, situated in Cameron Parish, Louisiana, and more particularly described as follows: Beginning at a point having Coordinates of X = 1,503,521.87 and Y = 412,740.04; thence South 88 degrees 40 minutes 32 seconds East 5,344.60 feet to a point having Coordinates of X = 1,508,865.04 and Y = 412,616.50; thence South 01 degrees 33 minutes 34 seconds West 2,630.39 feet to a point having Coordinates of X = 1,508,793.46 and Y = 409,987.09; thence North 88 degrees 40 minutes 15 seconds West 5,342.78 feet to a point having Coordinates of X = 1,503,452.12 and Y = 410,111.02; thence North 01 degrees 31 minutes 11 seconds East 2,629.94 feet to the point of beginning, containing approximately **144 acres**, all as more particularly outlined on a plat on file in the Office of Mineral Resources, Department of Natural Resources. All bearings, distances and coordinates are based on Louisiana Coordinate System of 1927, (North or South Zone), where applicable.

NOTE: The above description of the Tract nominated for lease has been provided and corrected, where required, exclusively by the nomination party. Any mineral lease selected from this Tract and awarded by the Louisiana State Mineral and Energy Board shall be without warranty of any kind, either express, implied, or statutory, including, but not limited to, the implied warranties of merchantability and fitness for a particular purpose. Should the mineral lease awarded by the Louisiana State Mineral and Energy Board be subsequently modified, cancelled or abrogated due to the existence of conflicting leases, operating agreements, private claims or other future obligations or conditions which may affect all or any portion of the leased Tract, it shall not relieve the Lessee of the obligation to pay any bonus due thereon to the Louisiana State Mineral and Energy Board, nor shall the Louisiana State Mineral and Energy Board be obligated to refund any consideration paid by the Lessor prior to such modification, cancellation, or abrogation, including, but not limited to, bonuses, rentals and royalties.

NOTE: The State of Louisiana does hereby reserve, and this lease shall be subject to, the imprescriptible right of surface use in the nature of a servitude in favor of the Department of Natural Resources, including its Offices and Commissions, for the sole purpose of implementing, constructing, servicing and maintaining approved coastal zone management and/or restoration projects. Utilization of any and all rights derived under this lease by the mineral lessee, its agents, successors or assigns, shall not interfere with nor hinder the reasonable surface use by the Department of Natural Resources, its Offices or Commissions, as herein above reserved.

Applicant: GRAY PRODUCTION COMPANY

Bidder	Cash Payment	Price/Acre	Rental	Oil	Gas	Other

Legend

13030014

IMAGERY.DOQQ\_2008\_1M\_CIR

CAMERON PARISH

MERMENTAU RIVER

UPPER MUD LAKE

P.O.B.

0 2,000 Feet



**TRACT 43115 - Cameron Parish, Louisiana**

All of the lands now or formerly constituting the beds and bottoms of all water bodies of every nature and description as to which title is vested in the State of Louisiana, together with all islands arising therein and other lands formed by accretion or by reliction, where allowed by law, excepting tax adjudicated lands, and not presently under mineral lease on March 13, 2013, situated in Cameron Parish, Louisiana, and more particularly described as follows: Beginning at a point having Coordinates of X = 1,503,452.12 and Y = 410,111.02; thence South 88 degrees 40 minutes 15 seconds East 5,342.78 feet to a point having Coordinates of X = 1,508,793.46 and Y = 409,987.09; thence South 01 degrees 33 minutes 34 seconds West 2,630.39 feet to a point having Coordinates of X = 1,508,721.88 and Y = 407,357.67; thence North 88 degrees 39 minutes 58 seconds West 5,340.97 feet to a point having Coordinates of X = 1,503,382.36 and Y = 407,482.01; thence North 01 degrees 31 minutes 11 seconds East 2,629.94 feet to the point of beginning, containing approximately **204 acres**, all as more particularly outlined on a plat on file in the Office of Mineral Resources, Department of Natural Resources. All bearings, distances and coordinates are based on Louisiana Coordinate System of 1927, (North or South Zone), where applicable.

NOTE: The above description of the Tract nominated for lease has been provided and corrected, where required, exclusively by the nomination party. Any mineral lease selected from this Tract and awarded by the Louisiana State Mineral and Energy Board shall be without warranty of any kind, either express, implied, or statutory, including, but not limited to, the implied warranties of merchantability and fitness for a particular purpose. Should the mineral lease awarded by the Louisiana State Mineral and Energy Board be subsequently modified, cancelled or abrogated due to the existence of conflicting leases, operating agreements, private claims or other future obligations or conditions which may affect all or any portion of the leased Tract, it shall not relieve the Lessee of the obligation to pay any bonus due thereon to the Louisiana State Mineral and Energy Board, nor shall the Louisiana State Mineral and Energy Board be obligated to refund any consideration paid by the Lessor prior to such modification, cancellation, or abrogation, including, but not limited to, bonuses, rentals and royalties.

NOTE: The State of Louisiana does hereby reserve, and this lease shall be subject to, the imprescriptible right of surface use in the nature of a servitude in favor of the Department of Natural Resources, including its Offices and Commissions, for the sole purpose of implementing, constructing, servicing and maintaining approved coastal zone management and/or restoration projects. Utilization of any and all rights derived under this lease by the mineral lessee, its agents, successors or assigns, shall not interfere with nor hinder the reasonable surface use by the Department of Natural Resources, its Offices or Commissions, as herein above reserved.

Applicant: GRAY PRODUCTION COMPANY

Bidder	Cash Payment	Price/Acre	Rental	Oil	Gas	Other

Legend

13030012

IMAGERY.DOQQ\_2008\_1M\_CIR

0 2,000 Feet



CAMERON PARISH

UPPER MUD LAKE

P.O.B.



**TRACT 43116 - Lafourche and Terrebonne Parishes, Louisiana**

All of the lands now or formerly constituting the beds and bottoms of all water bodies of every nature and description as to which title is vested in the State of Louisiana, together with all islands arising therein and other lands formed by accretion or by reliction, where allowed by law, excepting tax adjudicated lands, and not presently under mineral lease on March 13, 2013, situated in Lafourche and Terrebonne Parishes, Louisiana, and more particularly described as follows: Beginning at a point having Coordinates of X = 2,165,321.48 and Y = 394,572.14; thence East 14,480.00 feet to a point having Coordinates of X = 2,179,801.48 and Y = 394,572.14; thence South 12,480.00 feet to a point having Coordinates of X = 2,179,801.48 and Y = 382,092.14; thence West 14,480.00 feet to a point having Coordinates of X = 2,165,321.48 and Y = 382,092.14; thence North 12,480.00 feet to the point of beginning, (This lease includes only waterbottoms claimed and owned by the state and specifically excludes any land which the state may claim or own and to which the mineral rights are vested in the state), containing approximately **18 acres**, all as more particularly outlined on a plat on file in the Office of Mineral Resources, Department of Natural Resources. All bearings, distances and coordinates are based on Louisiana Coordinate System of 1927, (North or South Zone), where applicable.

NOTE: The above description of the Tract nominated for lease has been provided and corrected, where required, exclusively by the nomination party. Any mineral lease selected from this Tract and awarded by the Louisiana State Mineral and Energy Board shall be without warranty of any kind, either express, implied, or statutory, including, but not limited to, the implied warranties of merchantability and fitness for a particular purpose. Should the mineral lease awarded by the Louisiana State Mineral and Energy Board be subsequently modified, cancelled or abrogated due to the existence of conflicting leases, operating agreements, private claims or other future obligations or conditions which may affect all or any portion of the leased Tract, it shall not relieve the Lessee of the obligation to pay any bonus due thereon to the Louisiana State Mineral and Energy Board, nor shall the Louisiana State Mineral and Energy Board be obligated to refund any consideration paid by the Lessor prior to such modification, cancellation, or abrogation, including, but not limited to, bonuses, rentals and royalties.

NOTE: The State of Louisiana does hereby reserve, and this lease shall be subject to, the imprescriptible right of surface use in the nature of a servitude in favor of the Department of Natural Resources, including its Offices and Commissions, for the sole purpose of implementing, constructing, servicing and maintaining approved coastal zone management and/or restoration projects. Utilization of any and all rights derived under this lease by the mineral lessee, its agents, successors or assigns, shall not interfere with nor hinder the reasonable surface use by the Department of Natural Resources, its Offices or Commissions, as herein above reserved.



Applicant: DAY EXPLORATION

Bidder	Cash Payment	Price/Acre	Rental	Oil	Gas	Other

Legend

13030003



Active\_Leases

IMAGERY.DOQQ\_2008\_1M\_CIR

LAFOURCHE PARISH

T15S - R17E

P.O.B.

TERREBONNE PARISH

BAYOU TERREBONNE

T16S - R16E

0 3,000 Feet

**TRACT 43117 - Lafourche and Terrebonne Parishes, Louisiana**

All of the lands now or formerly constituting the beds and bottoms of all water bodies of every nature and description as to which title is vested in the State of Louisiana, together with all islands arising therein and other lands formed by accretion or by reliction, where allowed by law, excepting tax adjudicated lands, and not presently under mineral lease on March 13, 2013, situated in Lafourche and Terrebonne Parishes, Louisiana, and more particularly described as follows: Beginning at a point having Coordinates of X = 2,165,321.48 and Y = 382,092.14; thence East 14,480.00 feet to a point having Coordinates of X = 2,179,801.48 and Y = 382,092.14; thence South 12,480.00 feet to a point having Coordinates of X = 2,179,801.48 and Y = 369,612.14; thence West 14,480.00 feet to a point having Coordinates of X = 2,165,321.48 and Y = 369,612.14; thence North 12,480.00 feet to the point of beginning, (This lease includes only waterbottoms claimed and owned by the state and specifically excludes any land which the state may claim or own and to which the mineral rights are vested in the state), containing approximately **18 acres**, all as more particularly outlined on a plat on file in the Office of Mineral Resources, Department of Natural Resources. All bearings, distances and coordinates are based on Louisiana Coordinate System of 1927, (North or South Zone), where applicable.

NOTE: The above description of the Tract nominated for lease has been provided and corrected, where required, exclusively by the nomination party. Any mineral lease selected from this Tract and awarded by the Louisiana State Mineral and Energy Board shall be without warranty of any kind, either express, implied, or statutory, including, but not limited to, the implied warranties of merchantability and fitness for a particular purpose. Should the mineral lease awarded by the Louisiana State Mineral and Energy Board be subsequently modified, cancelled or abrogated due to the existence of conflicting leases, operating agreements, private claims or other future obligations or conditions which may affect all or any portion of the leased Tract, it shall not relieve the Lessee of the obligation to pay any bonus due thereon to the Louisiana State Mineral and Energy Board, nor shall the Louisiana State Mineral and Energy Board be obligated to refund any consideration paid by the Lessor prior to such modification, cancellation, or abrogation, including, but not limited to, bonuses, rentals and royalties.

NOTE: The State of Louisiana does hereby reserve, and this lease shall be subject to, the imprescriptible right of surface use in the nature of a servitude in favor of the Department of Natural Resources, including its Offices and Commissions, for the sole purpose of implementing, constructing, servicing and maintaining approved coastal zone management and/or restoration projects. Utilization of any and all rights derived under this lease by the mineral lessee, its agents, successors or assigns, shall not interfere with nor hinder the reasonable surface use by the Department of Natural Resources, its Offices or Commissions, as herein above reserved.

Applicant: DAY EXPLORATION

Bidder	Cash Payment	Price/Acre	Rental	Oil	Gas	Other

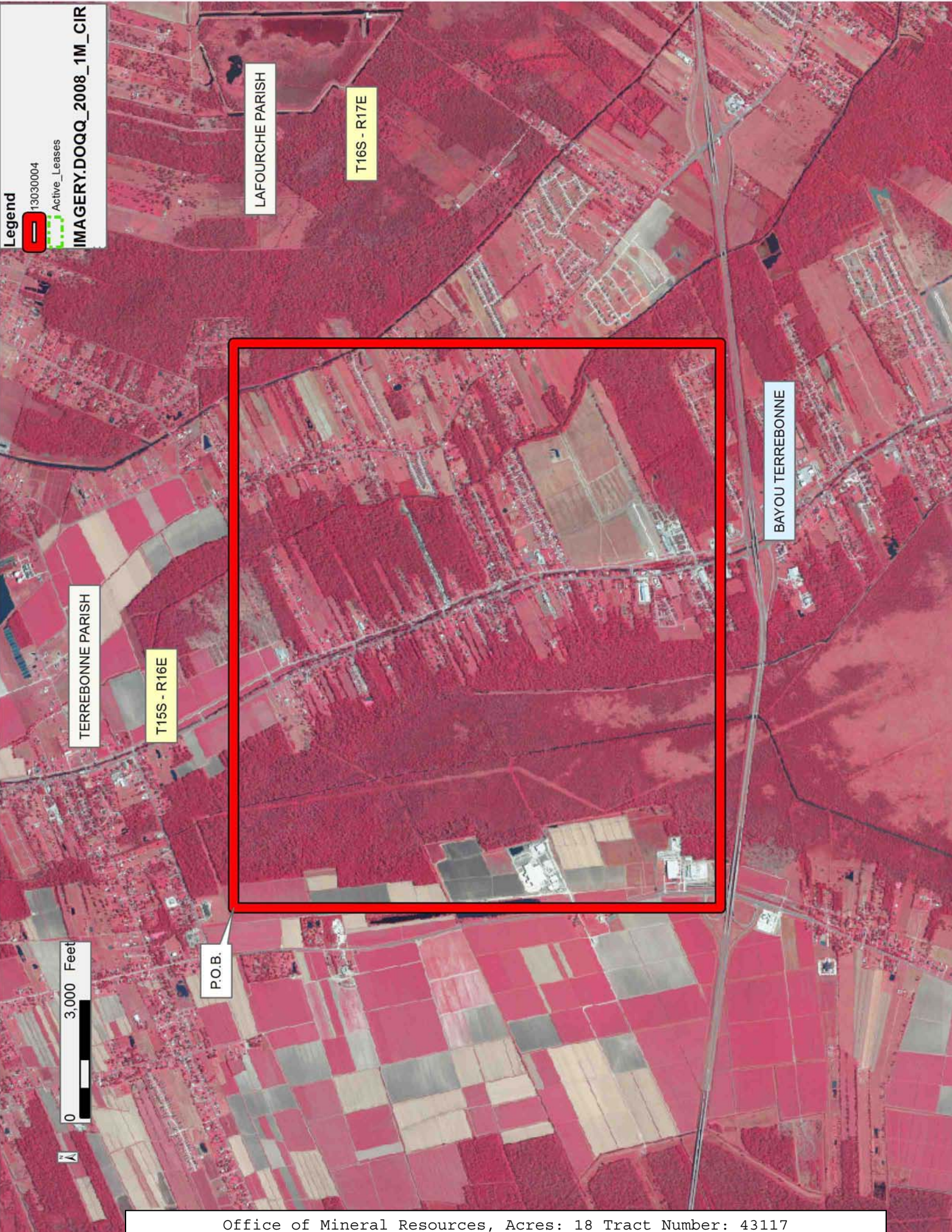
Legend

13030004



Active\_Leases

IMAGERY.DOQQ\_2008\_1M\_CIR



LAFOURCHE PARISH

T16S - R17E

TERREBONNE PARISH

T15S - R16E

BAYOU TERREBONNE

0 3,000 Feet

P.O.B.