

TRACT 43118 - Portion of Block 36, Main Pass Area, Revised, Plaquemines Parish, Louisiana

All of the lands now or formerly constituting the beds and bottoms of all water bodies of every nature and description as to which title is vested in the State of Louisiana, together with all islands arising therein and other lands formed by accretion or by reliction, where allowed by law, excepting tax adjudicated lands, and not presently under mineral lease on March 13, 2013, situated in Plaquemines Parish, Louisiana, and more particularly described as follows: Beginning at a point being the Northwest corner of Block 36, Main Pass Area, Revised, having Coordinates of X = 2,620,600.00 and Y = 292,830.00; thence East 7,375.00 feet along the North line of said Block 36, to a point having Coordinates of X = 2,627,975.00 and Y = 292,830.00; thence South 14,373.21 feet to a point on the Northern boundary of State Lease No. 20762 having Coordinates of X = 2,627,975.00 and Y = 278,456.79; thence along the Northern and Western boundaries of said State Lease No. 20762, the following courses: South 82 degrees 16 minutes 44 seconds West 9.29 feet to a point being its Northwest corner having Coordinates of X = 2,627,965.80 and Y = 278,455.54 and South 375.54 feet to a point being its Southwest corner having Coordinates of X = 2,627,965.80 and Y = 278,080.00, said point also being on the South line of said Block 36; thence West 7,365.80 feet along the South line of said Block 36 to a point being its Southwest corner having Coordinates of X = 2,620,600.00 and Y = 278,080.00; thence North 14,750.00 feet along the West line of said Block 36, to the point of beginning, containing approximately **2,497.19 acres**, all as more particularly outlined on a plat on file in the Office of Mineral Resources, Department of Natural Resources. All bearings, distances and coordinates are based on Louisiana Coordinate System of 1927, (North or South Zone), where applicable.

NOTE: The above description of the Tract nominated for lease has been provided and corrected, where required, exclusively by the nomination party. Any mineral lease selected from this Tract and awarded by the Louisiana State Mineral and Energy Board shall be without warranty of any kind, either express, implied, or statutory, including, but not limited to, the implied warranties of merchantability and fitness for a particular purpose. Should the mineral lease awarded by the Louisiana State Mineral and Energy Board be subsequently modified, cancelled or abrogated due to the existence of conflicting leases, operating agreements, private claims or other future obligations or conditions which may affect all or any portion of the leased Tract, it shall not relieve the Lessee of the obligation to pay any bonus due thereon to the Louisiana State Mineral and Energy Board, nor shall the Louisiana State Mineral and Energy Board be obligated to refund any consideration paid by the Lessor prior to such modification, cancellation, or abrogation, including, but not limited to, bonuses, rentals and royalties.

NOTE: The State of Louisiana does hereby reserve, and this lease shall be subject to, the imprescriptible right of surface use in the nature of a

servitude in favor of the Department of Natural Resources, including its Offices and Commissions, for the sole purpose of implementing, constructing, servicing and maintaining approved coastal zone management and/or restoration projects. Utilization of any and all rights derived under this lease by the mineral lessee, its agents, successors or assigns, shall not interfere with nor hinder the reasonable surface use by the Department of Natural Resources, its Offices or Commissions, as herein above reserved.

NOTE: This tract is located in an area designated by the Louisiana Legislature or the Wildlife and Fisheries Commission as a Public Oyster Seed Ground, Reservation, or area of Calcasieu or Sabine Lake. Proposed projects occurring in these areas will be evaluated on a case by case basis by Louisiana Department of Wildlife & Fisheries. Modifications to proposed project features including, but not limited to, access routes, well sites, flowlines, and appurtenant structures maybe required by the Louisiana Department of Wildlife and Fisheries. In addition, compensatory mitigation will be required to offset unavoidable habitat impacts.

Applicant: ROBERT A. SCHROEDER

Bidder	Cash Payment	Price/Acre	Rental	Oil	Gas	Other

Legend

- 13030017
- Blocks
- Active_Leases

PLAQUEMINES PARISH

MP0031

MP0036

SL 20762

SL 20764

SL 2125

MP0049

P.O.B.

MP0035

GULF OF MEXICO

MAIN PASS AREA, REVISED

MP0050



SL 1958

SL 1961

TRACT 43119 - Plaquemines Parish, Louisiana

All of the lands now or formerly constituting the beds and bottoms of all water bodies of every nature and description as to which title is vested in the State of Louisiana, together with all islands arising therein and other lands formed by accretion or by reliction, where allowed by law, excepting tax adjudicated lands, and not presently under mineral lease on March 13, 2013, situated in Plaquemines Parish, Louisiana, and more particularly described as follows: Beginning at a point being the Northwestern corner of State of Louisiana State Lease No. 21071 having Coordinates of X = 2,562,999.00 and Y = 252,700.00; thence West 2,968.00 to a point having Coordinates of X = 2,560,031.00 and Y = 252,700.00; thence North 4,701.00 feet to a point having Coordinates of X = 2,560,031.00 and Y = 257,401.00; thence East 2,456.00 feet to a point having Coordinates of X = 2,562,487.00 and Y = 257,401.00; thence South 69 degrees 09 minutes 03 seconds East 10,520.07 feet to a point on a Western boundary of State Lease No. 19250 having Coordinates of X = 2,572,318.23 and Y = 253,656.82; thence South 36 degrees 21 minutes 57 seconds West 3,876.00 feet along said Western boundary of said State Lease No. 19250 to a point being on an Eastern boundary of said State of Louisiana State Lease No. 21071 having Coordinates of X = 2,570,020.00 and Y = 250,535.68; thence along the Eastern and Northern boundaries of said State Lease No. 21071 the following courses: North 2164.32 feet to a point having Coordinates of X = 2,570,020.00 and Y = 252,700.00 and West 7,021.00 feet to the point of beginning, containing approximately **592 acres**, all as more particularly outlined on a plat on file in the Office of Mineral Resources, Department of Natural Resources. All bearings, distances and coordinates are based on Louisiana Coordinate System of 1927, (North or South Zone), where applicable.

NOTE: The above description of the Tract nominated for lease has been provided and corrected, where required, exclusively by the nomination party. Any mineral lease selected from this Tract and awarded by the Louisiana State Mineral and Energy Board shall be without warranty of any kind, either express, implied, or statutory, including, but not limited to, the implied warranties of merchantability and fitness for a particular purpose. Should the mineral lease awarded by the Louisiana State Mineral and Energy Board be subsequently modified, cancelled or abrogated due to the existence of conflicting leases, operating agreements, private claims or other future obligations or conditions which may affect all or any portion of the leased Tract, it shall not relieve the Lessee of the obligation to pay any bonus due thereon to the Louisiana State Mineral and Energy Board, nor shall the Louisiana State Mineral and Energy Board be obligated to refund any consideration paid by the Lessor prior to such modification, cancellation, or abrogation, including, but not limited to, bonuses, rentals and royalties.

NOTE: The State of Louisiana does hereby reserve, and this lease shall be subject to, the imprescriptible right of surface use in the nature of a servitude in favor of the Department of Natural Resources, including its

Offices and Commissions, for the sole purpose of implementing, constructing, servicing and maintaining approved coastal zone management and/or restoration projects. Utilization of any and all rights derived under this lease by the mineral lessee, its agents, successors or assigns, shall not interfere with nor hinder the reasonable surface use by the Department of Natural Resources, its Offices or Commissions, as herein above reserved.

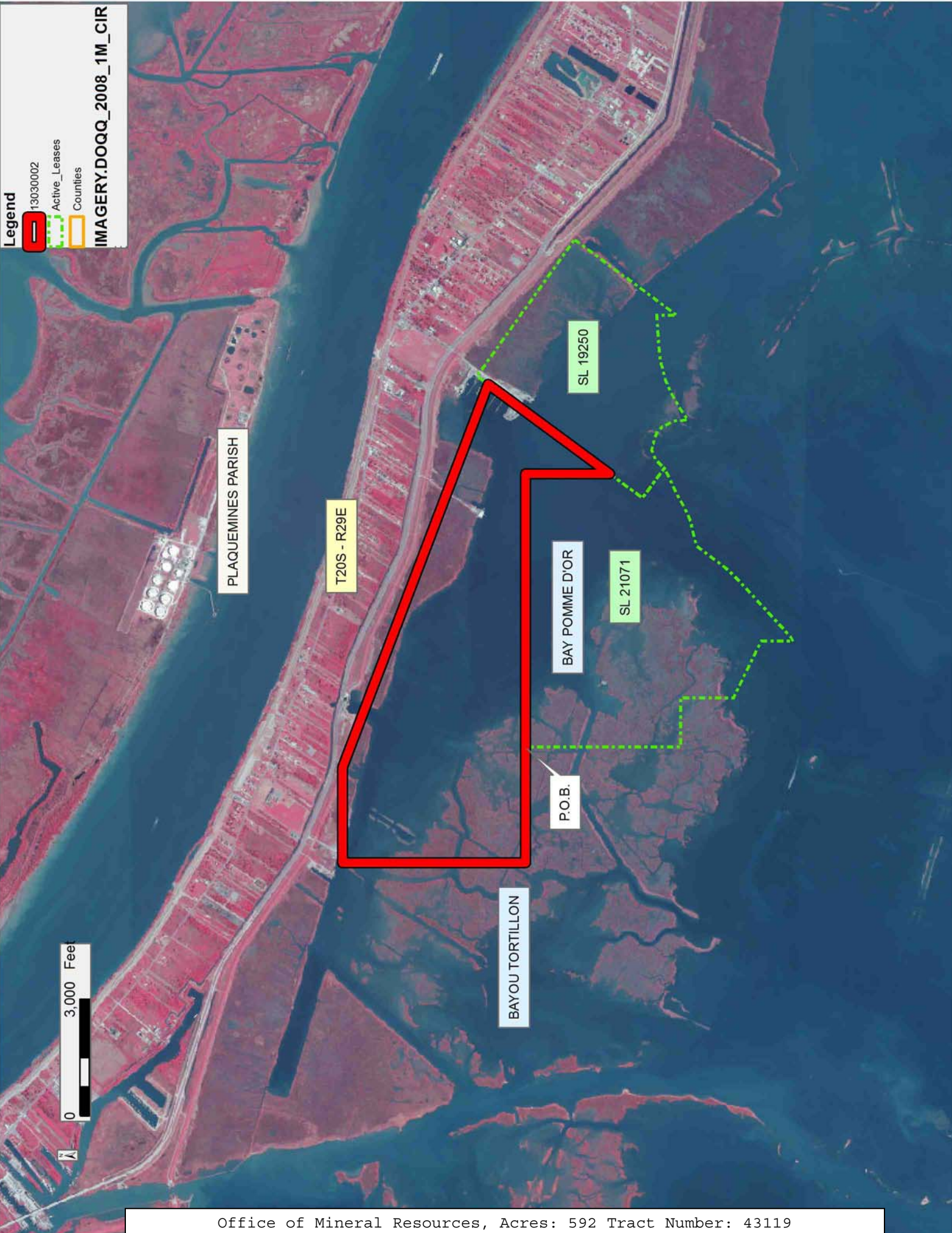
Applicant: ROBERT A. SCHROEDER, INC.

Bidder	Cash Payment	Price/Acre	Rental	Oil	Gas	Other

Legend

-  13030002
-  Active_Leases
-  Counties

IMAGERY.DOQQ_2008_1M_CIR



0 3,000 Feet

TRACT 43120 - Plaquemines Parish, Louisiana

All of the lands now or formerly constituting the beds and bottoms of all water bodies of every nature and description as to which title is vested in the State of Louisiana, together with all islands arising therein and other lands formed by accretion or by reliction, where allowed by law, excepting tax adjudicated lands, and not presently under mineral lease on March 13, 2013, situated in Plaquemines Parish, Louisiana, and more particularly described as follows: Beginning at a point being the Northwestern corner of State Lease No. 21071 having Coordinates of X = 2,562,999.00 and Y = 252,700.00; thence South 3,978.00 feet along the Western boundary of said State Lease No. 21071 to a point on the Northern boundary of State Lease No. 20483 having Coordinates of X = 2,562,999.00 and Y = 248,722.00; thence along the boundary of said State Lease No. 20483 the following courses: West 1,671.00 feet to a point having Coordinates of X = 2,561,328.00 and Y = 248,722.00, South 905.00 feet to a point having Coordinates of X = 2,561,328.00 and Y = 247,817.00, South 54 degrees 52 minutes 52 seconds East 2,035.55 feet to a point having Coordinates of X = 2,562,993.00 and Y = 246,646.00, South 00 degrees 12 minutes 15 seconds East 1,684.01 feet to a point having Coordinates of X = 2,562,999.00 and Y = 244,962.00, and East approximately 1,468 feet to a point having a Coordinate of Y = 244,962.00, said point being on a Western boundary of said State Lease No. 192, as amended; thence Southerly approximately 2,981 feet along said Western boundary of said State Lease No. 192, as amended, to a point on a Northern boundary of State Lease No. 3212; thence Westerly approximately 3,953 feet along the boundary of said State Lease No. 3212 to a point on an Eastern boundary of State Lease No. 2651; thence along the boundary of said State Lease No. 2651, the following courses: Northerly approximately 2,399 feet and Westerly approximately 11,441 feet to a point having a Coordinate of X = 2,549,481.00; thence North approximately 8,158 feet to a point having Coordinates of X = 2,549,481.00 and Y = 252,700.00; thence East 13,518.00 feet to the point of beginning, **LESS AND EXCEPT** all that portion of State Lease No. 21072 which lies entirely within the above described tract, being more fully described as follows: Commencing at a point being the point of beginning of the above described nominated tract having Coordinates of X = 2,562,999.00 and Y = 252,700.00; thence South 55 degrees 05 minutes 04 seconds West 4,661.46 feet to a point being the point of beginning of said State Lease No. 21072 having Coordinates of X = 2,559,176.62 and Y = 250,031.93; thence South 01 degrees 42 minutes 02 seconds East 3,779.91 feet to a point having Coordinates of X = 2,559,288.79 and Y = 246,253.68; thence South 71 degrees 48 minutes 14 seconds West 2,085.85 feet to a point having Coordinates of X = 2,557,307.25 and Y = 245,602.33; thence North 01 degrees 42 minutes 02 seconds West 4,379.80 feet to a point having Coordinates of X = 2,557,177.28 and Y = 249,980.20; thence North 88 degrees 31 minutes 04 seconds East 2,000.01 feet to the point of beginning, the nominated tract containing approximately **1,829 acres**, all as more particularly outlined on a plat on file in the Office of Mineral Resources, Department of Natural

Resources. All bearings, distances and coordinates are based on Louisiana Coordinate System of 1927, (North or South Zone), where applicable.

NOTE: The above description of the Tract nominated for lease has been provided and corrected, where required, exclusively by the nomination party. Any mineral lease selected from this Tract and awarded by the Louisiana State Mineral and Energy Board shall be without warranty of any kind, either express, implied, or statutory, including, but not limited to, the implied warranties of merchantability and fitness for a particular purpose. Should the mineral lease awarded by the Louisiana State Mineral and Energy Board be subsequently modified, cancelled or abrogated due to the existence of conflicting leases, operating agreements, private claims or other future obligations or conditions which may affect all or any portion of the leased Tract, it shall not relieve the Lessee of the obligation to pay any bonus due thereon to the Louisiana State Mineral and Energy Board, nor shall the Louisiana State Mineral and Energy Board be obligated to refund any consideration paid by the Lessor prior to such modification, cancellation, or abrogation, including, but not limited to, bonuses, rentals and royalties.

NOTE: The State of Louisiana does hereby reserve, and this lease shall be subject to, the imprescriptible right of surface use in the nature of a servitude in favor of the Department of Natural Resources, including its Offices and Commissions, for the sole purpose of implementing, constructing, servicing and maintaining approved coastal zone management and/or restoration projects. Utilization of any and all rights derived under this lease by the mineral lessee, its agents, successors or assigns, shall not interfere with nor hinder the reasonable surface use by the Department of Natural Resources, its Offices or Commissions, as herein above reserved.

Applicant: ROBERT A. SCHROEDER, INC.

Bidder	Cash Payment	Price/Acre	Rental	Oil	Gas	Other

Legend

13030001

Active_Leases

IMAGERY.DOQQ_2008_1M_CIR



TRACT 43121 - Plaquemines Parish, Louisiana

All of the lands now or formerly constituting the beds and bottoms of all water bodies of every nature and description as to which title is vested in the State of Louisiana, together with all islands arising therein and other lands formed by accretion or by reliction, where allowed by law, excepting tax adjudicated lands, and not presently under mineral lease on March 13, 2013, situated in Plaquemines Parish, Louisiana, and more particularly described as follows: Beginning at a point having Coordinates of X = 2,538,872.00 and Y = 224,144.40; thence North 59 degrees 59 minutes 23 seconds West 7,798.16 feet to a point having a Coordinates of X = 2,532,119.30 and Y = 228,044.70; thence North 60 degrees 13 minutes 24 seconds East 7,654.32 feet to a point having Coordinates of X = 2,538,763.00 and Y = 231,846.00; thence South 60 degrees 33 minutes 44 seconds East 3,935.06 feet to a point having Coordinates of X = 2,542,190.00 and Y = 229,912.00; thence South 70 degrees 15 minutes 23 seconds East 5,763.59 feet to a point having Coordinates of X = 2,547,614.77 and Y = 227,965.00; thence South 8,902.76 feet to a point having Coordinates of X = 2,547,614.77 and Y = 219,062.24; thence North 59 degrees 49 minutes 50 seconds West 10,112.59 feet to the point of beginning, containing approximately **2,193 acres**, all as more particularly outlined on a plat on file in the Office of Mineral Resources, Department of Natural Resources. All bearings, distances and coordinates are based on Louisiana Coordinate System of 1927, (North or South Zone), where applicable.

NOTE: The above description of the Tract nominated for lease has been provided and corrected, where required, exclusively by the nomination party. Any mineral lease selected from this Tract and awarded by the Louisiana State Mineral and Energy Board shall be without warranty of any kind, either express, implied, or statutory, including, but not limited to, the implied warranties of merchantability and fitness for a particular purpose. Should the mineral lease awarded by the Louisiana State Mineral and Energy Board be subsequently modified, cancelled or abrogated due to the existence of conflicting leases, operating agreements, private claims or other future obligations or conditions which may affect all or any portion of the leased Tract, it shall not relieve the Lessee of the obligation to pay any bonus due thereon to the Louisiana State Mineral and Energy Board, nor shall the Louisiana State Mineral and Energy Board be obligated to refund any consideration paid by the Lessor prior to such modification, cancellation, or abrogation, including, but not limited to, bonuses, rentals and royalties.

NOTE: The State of Louisiana does hereby reserve, and this lease shall be subject to, the imprescriptible right of surface use in the nature of a servitude in favor of the Department of Natural Resources, including its Offices and Commissions, for the sole purpose of implementing, constructing, servicing and maintaining approved coastal zone management and/or restoration projects. Utilization of any and all rights derived under this lease by the mineral lessee, its agents, successors or assigns,

shall not interfere with nor hinder the reasonable surface use by the Department of Natural Resources, its Offices or Commissions, as herein above reserved.

NOTE: It appears, according to our records, that a portion of this Tract is located within the restrictive safety fairway area as set out by the Corps of Engineers, U.S. Army and/or the restrictive anchorage area as set out by the U.S. Coast Guard.

Applicant: ROBERT A. SCHROEDER, INC.

Bidder	Cash Payment	Price/Acre	Rental	Oil	Gas	Other

Legend

13030005

Blocks

IMAGERY.DOQQ_2008_1M_CIR

0 3,000 Feet

PLAQUEMINES PARISH

BASTIAN BAY

P.O.B.

WD0007

GULF OF MEXICO

WEST DELTA AREA

WD0006

T21S - R28E