

**TRACT 43126 - Portion of Blocks 10, and 7, Grand Isle Area, Jefferson and Plaquemines Parishes, Louisiana**

The beds and bottoms of all water bodies belonging to the State of Louisiana located in Blocks 10, and 7, Grand Isle Area, together with any present lands formed by accretion to the shoreline or islands formed therein, located in Jefferson and Plaquemines Parishes, Louisiana, owned by and not presently under mineral lease as of April 10, 2013, from the State of Louisiana, the geographical area of which is more fully described as follows: Beginning at a point on the Louisiana Coastline, as decreed by the Supreme Court of the United States, as determined by a Special Master appointed therein, in litigation styled *United States v. State of Louisiana et al No. 9 Original*, in 1975, having Coordinates of X = 2,445,510.00 and Y = 196,844.13, said point also being within Block 10, Grand Isle Area; thence North 3,449.30 feet to a point on the South line of Block 7, Grand Isle Area, having Coordinates of X = 2,445,510.00 and Y = 200,293.43; thence North 6,606.57 feet to a point having Coordinates of X = 2,445,510.00 and Y = 206,900.00; thence East 12,149.89 feet to a point on the East Line of said Block 7 having Coordinates of X = 2,457,659.89 and Y = 206,900.00; thence South 6,606.57 feet along the East Line of Block 7 to a point being the Northeast corner of said Block 10, having Coordinates of X = 2,457,659.89 and Y = 200,293.43; thence South 1,212.13 feet to a point on said Louisiana Coastline having Coordinates of X = 2,457,659.89 and Y = 199,081.30; thence Southwesterly, on a straight line, along said Louisiana Coastline to the point of beginning, containing approximately **2,492.82 acres**, all as more particularly outlined on a plat on file in the Office of Mineral Resources, Department of Natural Resources. All bearings, distances and coordinates are based on Louisiana Coordinate System of 1927, (North or South Zone).

NOTE: The above description of the Tract nominated for lease has been provided and corrected, where required, exclusively by the nomination party. Any mineral lease selected from this Tract and awarded by the Louisiana State Mineral and Energy Board shall be without warranty of any kind, either express, implied, or statutory, including, but not limited to, the implied warranties of merchantability and fitness for a particular purpose. Should the mineral lease awarded by the Louisiana State Mineral and Energy Board be subsequently modified, cancelled or abrogated due to the existence of conflicting leases, operating agreements, private claims or other future obligations or conditions which may affect all or any portion of the leased Tract, it shall not relieve the Lessee of the obligation to pay any bonus due thereon to the Louisiana State Mineral and Energy Board, nor shall the Louisiana State Mineral and Energy Board be obligated to refund any consideration paid by the Lessor prior to such modification, cancellation, or abrogation, including, but not limited to, bonuses, rentals and royalties.

NOTE: The State of Louisiana does hereby reserve, and this lease shall be subject to, the imprescriptible right of surface use in the nature of a servitude in favor of the Department of Natural Resources, including its Offices and Commissions, for the sole purpose of implementing,

constructing, servicing and maintaining approved coastal zone management and/or restoration projects. Utilization of any and all rights derived under this lease by the mineral lessee, its agents, successors or assigns, shall not interfere with nor hinder the reasonable surface use by the Department of Natural Resources, its Offices or Commissions, as herein above reserved.

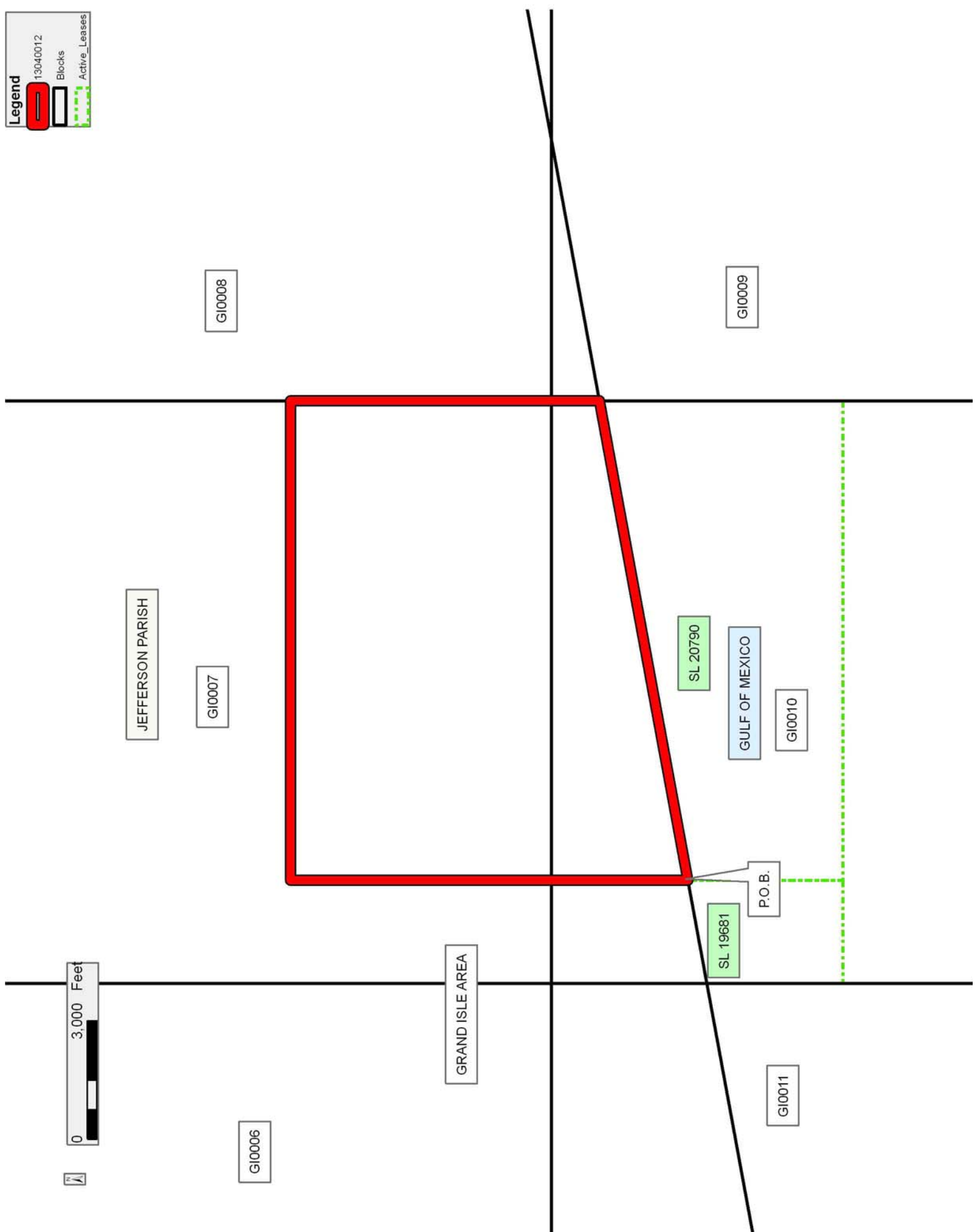
NOTE: It appears, according to our records, that a portion of this Tract is located within the restrictive safety fairway area as set out by the Corps of Engineers, U.S. Army and/or the restrictive anchorage area as set out by the U.S. Coast Guard.

Applicant: PUMKIN ISLAND INVESTMENT CO.

Bidder	Cash Payment	Price/Acre	Rental	Oil	Gas	Other

**Legend**

- 13040012 (Red outline)
- Blocks (Black outline)
- Active\_Leases (Green dashed line)



**TRACT 43127 - Portion of Block 9, Grand Isle Area, Plaquemines Parish, Louisiana**

The beds and bottoms of all water bodies belonging to the State of Louisiana located in Block 9, Grand Isle Area, together with any present lands formed by accretion to the shoreline or islands formed therein, located in Plaquemines Parish, Louisiana, owned by and not presently under mineral lease as of April 10, 2013, from the State of Louisiana, the geographical area of which is more fully described as follows: Beginning at the Southwest Corner of Block 9, Grand Isle Area, having Coordinates of X = 2,457,659.89 and Y = 185,535.39; thence North 13,545.91 feet along the West Line of said Block 9, to a point on the Louisiana Coastline, as decreed by the Supreme Court of the United States, as determined by a Special Master appointed therein, in litigation styled *United States v. State of Louisiana et al No. 9 Original*, in 1975, having Coordinates of X = 2,457,659.89 and Y = 199,081.30; thence Northeasterly, on a straight line, along said Louisiana Coastline to a point on the Western Boundary of State Lease No. 797 having Coordinates of X = 2,463,412.23 and Y = 200,140.49; thence along the boundary of said State Lease No. 797 the following: South 2,977.49 feet to a point having Coordinates of X = 2,463,412.23 and Y = 197,163.00; East 1,331.69 feet to a point having Coordinates of X = 2,464,743.92 and Y = 197,163.00; South 6,125.19 feet to a point having Coordinates of X = 2,464,743.92 and Y = 191,037.81; and South 25 degrees 26 minutes 42 seconds West 6,093.51 feet to a point on the Southern boundary of said Block 9 having Coordinates of X = 2,462,125.87 and Y = 185,535.39; thence West 4,465.98 feet along the South Line of said Block 9 to the point of beginning, (This tract includes only waterbottoms claimed and owned by the state and specifically excludes any land which the state may claim or own and to which the mineral rights are vested in the state), containing approximately **2048.87 acres**, all as more particularly outlined on a plat on file in the Office of Mineral Resources, Department of Natural Resources. All bearings, distances and coordinates are based on Louisiana Coordinate System of 1927, (North or South Zone).

NOTE: The above description of the Tract nominated for lease has been provided and corrected, where required, exclusively by the nomination party. Any mineral lease selected from this Tract and awarded by the Louisiana State Mineral and Energy Board shall be without warranty of any kind, either express, implied, or statutory, including, but not limited to, the implied warranties of merchantability and fitness for a particular purpose. Should the mineral lease awarded by the Louisiana State Mineral and Energy Board be subsequently modified, cancelled or abrogated due to the existence of conflicting leases, operating agreements, private claims or other future obligations or conditions which may affect all or any portion of the leased Tract, it shall not relieve the Lessee of the obligation to pay any bonus due thereon to the Louisiana State Mineral and Energy Board, nor shall the Louisiana State Mineral and Energy Board be obligated to refund any consideration paid by the Lessor prior to such

modification, cancellation, or abrogation, including, but not limited to, bonuses, rentals and royalties.

NOTE: A portion of the tract contains the Grand Isle-9 artificial reef. Construction of structures and installation of pipelines within the reef boundaries is restricted. Oil and gas structures and associated appurtenances should be constructed at least 500 feet outside the artificial reef boundaries.

NOTE: The State of Louisiana does hereby reserve, and this lease shall be subject to, the imprescriptible right of surface use in the nature of a servitude in favor of the Department of Natural Resources, including its Offices and Commissions, for the sole purpose of implementing, constructing, servicing and maintaining approved coastal zone management and/or restoration projects. Utilization of any and all rights derived under this lease by the mineral lessee, its agents, successors or assigns, shall not interfere with nor hinder the reasonable surface use by the Department of Natural Resources, its Offices or Commissions, as herein above reserved.

Applicant: PUMKIN ISLAND INVESTMENT CO.

Bidder	Cash Payment	Price/Acre	Rental	Oil	Gas	Other

**Legend**

13040013

Blocks

Active\_Leases

PLAQUEMINES PARISH

WILDLIFE AND FISHERIES  
ARTIFICIAL REEF AREA

GULF OF MEXICO

GRAND ISLE AREA

SL 797

GI0009

SL 20581

SL 20794

P.O.B.

SL 20790

SL 19685

GI0010



**TRACT 43128 - Portion of Blocks 121, and 122, South Timbalier Area, Revised, Terrebonne Parish, Louisiana**

The beds and bottoms of all water bodies belonging to the State of Louisiana located in Blocks 121, and 122, South Timbalier Area, Revised, together with any present lands formed by accretion to the shoreline or islands formed therein, located in Terrebonne Parish, Louisiana, owned by and not presently under mineral lease as of April 10, 2013, from the State of Louisiana, the geographical area of which is more fully described as follows: Beginning at a point within Block 121, South Timbalier Area, Revised, also being a point on the Louisiana Coastline, as decreed by the Supreme Court of the United States, as determined by a Special Master appointed therein, in litigation styled *United States v. State of Louisiana et al No. 9 Original*, in 1975, having Coordinates of X = 2,245,721.53 and Y = 152,250.93; thence along the said Coastline the following: Northeasterly on a straight line to a point having Coordinates of X = 2,253,306 and Y = 154,102 and Southeasterly on a straight line to a point on the West boundary of State Lease No. 1249, as amended having Coordinates of X = 2,253,964.83 and Y = 153,239.62; thence along the boundaries of said State Lease No. 1249 the following courses: South 09 degrees 41 minutes 15 seconds East 268.45 feet to a point having Coordinates of X = 2,254,010.00 and Y = 152,975.00, South 16 degrees 17 minutes 29 seconds East 3,297.96 feet to a point having Coordinates of X = 2,254,935.16 and Y = 149,809.46 and North 74 degrees 44 minutes 42 seconds East 199.93 feet to a point having Coordinates of X = 2,255,128.04 and Y = 149,862.07; thence South 5,668.54 feet to a point on the West boundary of said State Lease No. 1249 having Coordinates of X = 2,255,128.04 and Y = 144,193.53; thence along the boundaries of said State Lease No. 1249 the following courses: continue South 1,485.00 feet to a point having Coordinates of X = 2,255,128.04 and Y = 142,708.53, West 1,320.00 feet to a point having Coordinates of X = 2,253,808.04 and Y = 142,708.53 and South 1,155.00 feet to a point on the North boundary of State Lease No. 2986, as amended having Coordinates of X = 2,253,808.04 and Y = 141,553.53; thence West 1,146.51 feet along the North boundary of said State Lease No. 2986 to its Northwest corner having Coordinates of X = 2,252,661.53 and Y = 141,553.53; thence continue West 6,940.00 feet to a point having Coordinates of X = 2,245,721.53 and Y = 141,553.53; thence North 10,697.40 feet to the point of beginning, containing approximately **2429.62 acres**, all as more particularly outlined on a plat on file in the Office of Mineral Resources, Department of Natural Resources. All bearings, distances and coordinates are based on Louisiana Coordinate System of 1927, (North or South Zone).

NOTE: The above description of the Tract nominated for lease has been provided and corrected, where required, exclusively by the nomination party. Any mineral lease selected from this Tract and awarded by the Louisiana State Mineral and Energy Board shall be without warranty of any kind, either express, implied, or statutory, including, but not limited to, the implied warranties of merchantability and fitness for a particular

purpose. Should the mineral lease awarded by the Louisiana State Mineral and Energy Board be subsequently modified, cancelled or abrogated due to the existence of conflicting leases, operating agreements, private claims or other future obligations or conditions which may affect all or any portion of the leased Tract, it shall not relieve the Lessee of the obligation to pay any bonus due thereon to the Louisiana State Mineral and Energy Board, nor shall the Louisiana State Mineral and Energy Board be obligated to refund any consideration paid by the Lessor prior to such modification, cancellation, or abrogation, including, but not limited to, bonuses, rentals and royalties.

NOTE: The State of Louisiana does hereby reserve, and this lease shall be subject to, the imprescriptible right of surface use in the nature of a servitude in favor of the Department of Natural Resources, including its Offices and Commissions, for the sole purpose of implementing, constructing, servicing and maintaining approved coastal zone management and/or restoration projects. Utilization of any and all rights derived under this lease by the mineral lessee, its agents, successors or assigns, shall not interfere with nor hinder the reasonable surface use by the Department of Natural Resources, its Offices or Commissions, as herein above reserved.

NOTE: It appears, according to our records, that a portion of this Tract is located within the restrictive safety fairway area as set out by the Corps of Engineers, U.S. Army and/or the restrictive anchorage area as set out by the U.S. Coast Guard.

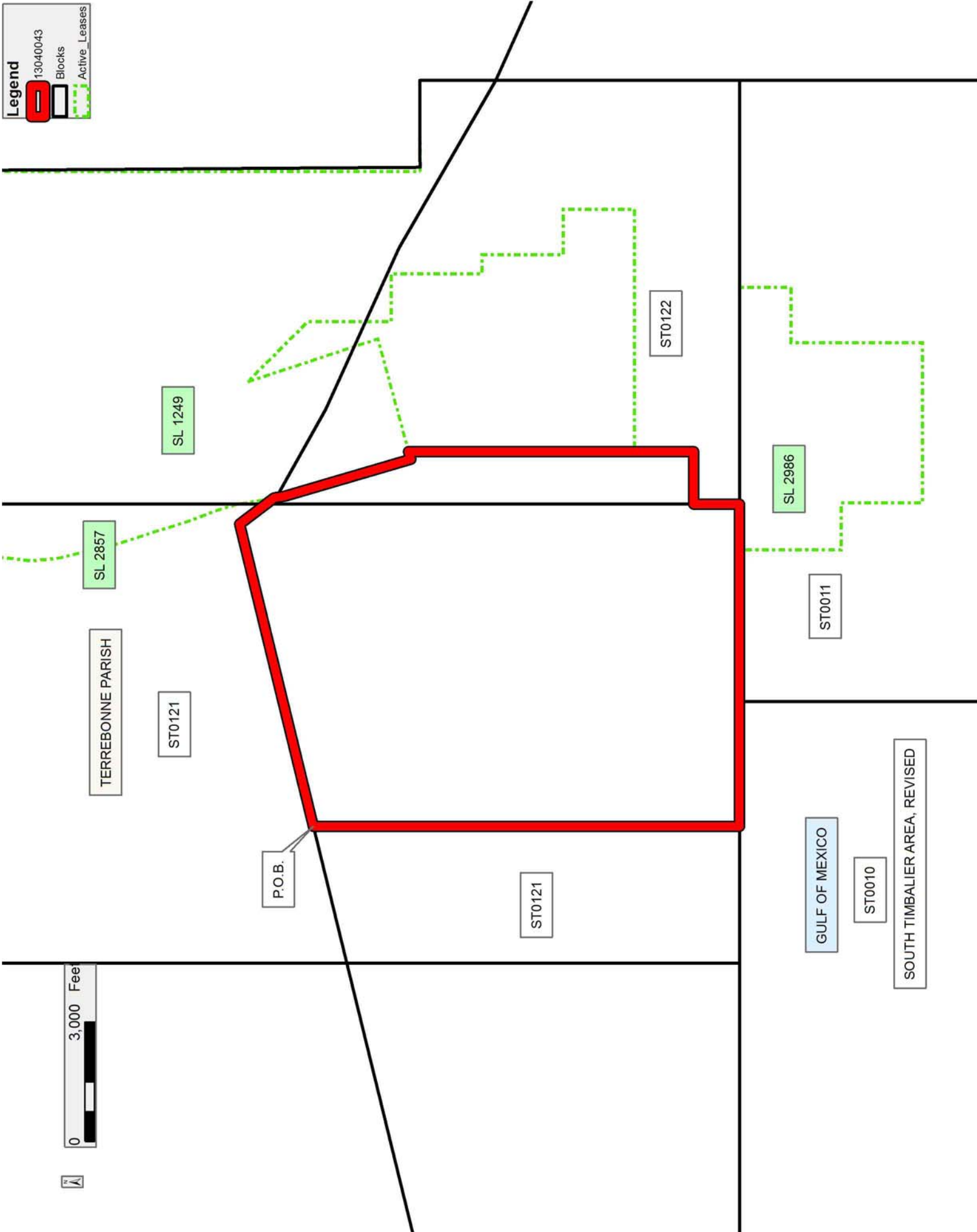
Applicant: CYPRESS ENERGY CORPORATION

Bidder	Cash Payment	Price/Acre	Rental	Oil	Gas	Other



**Legend**

- 13040043
- Blocks
- Active Leases



**TRACT 43129 - Portion of Blocks 120, and 121, South Timbalier Area, Revised, Terrebonne Parish, Louisiana**

The beds and bottoms of all water bodies belonging to the State of Louisiana located in Blocks 120, and 121, South Timbalier Area, Revised, together with any present lands formed by accretion to the shoreline or islands formed therein, located in Terrebonne Parish, Louisiana, owned by and not presently under mineral lease as of April 10, 2013, from the State of Louisiana, the geographical area of which is more fully described as follows: Beginning at a point within Block 120, South Timbalier Area, Revised also being a point on the Louisiana Coastline, as decreed by the Supreme Court of the United States, as determined by a Special Master appointed therein, in litigation styled *United States v. State of Louisiana et al No. 9 Original*, in 1975, having Coordinates of X = 2,236,721.53 and Y = 150,054.38; thence Northeasterly on a straight line along said Coastline to a point having Coordinates of X = 2,245,721.53 and Y = 152,250.93; thence South 10,697.40 feet to a point having Coordinates of X = 2,245,721.53 and Y = 141,553.53; thence West 9,000.00 feet to a point having Coordinates of X = 2,236,721.53 and Y = 141,553.53; thence North 8,500.85 feet to the point of beginning, containing approximately **1,983.29 acres**, all as more particularly outlined on a plat on file in the Office of Mineral Resources, Department of Natural Resources. All bearings, distances and coordinates are based on Louisiana Coordinate System of 1927, (North or South Zone).

NOTE: The above description of the Tract nominated for lease has been provided and corrected, where required, exclusively by the nomination party. Any mineral lease selected from this Tract and awarded by the Louisiana State Mineral and Energy Board shall be without warranty of any kind, either express, implied, or statutory, including, but not limited to, the implied warranties of merchantability and fitness for a particular purpose. Should the mineral lease awarded by the Louisiana State Mineral and Energy Board be subsequently modified, cancelled or abrogated due to the existence of conflicting leases, operating agreements, private claims or other future obligations or conditions which may affect all or any portion of the leased Tract, it shall not relieve the Lessee of the obligation to pay any bonus due thereon to the Louisiana State Mineral and Energy Board, nor shall the Louisiana State Mineral and Energy Board be obligated to refund any consideration paid by the Lessor prior to such modification, cancellation, or abrogation, including, but not limited to, bonuses, rentals and royalties.

NOTE: The State of Louisiana does hereby reserve, and this lease shall be subject to, the imprescriptible right of surface use in the nature of a servitude in favor of the Department of Natural Resources, including its Offices and Commissions, for the sole purpose of implementing, constructing, servicing and maintaining approved coastal zone management and/or restoration projects. Utilization of any and all rights derived under this lease by the mineral lessee, its agents, successors or assigns, shall not interfere with nor hinder the reasonable surface use by the

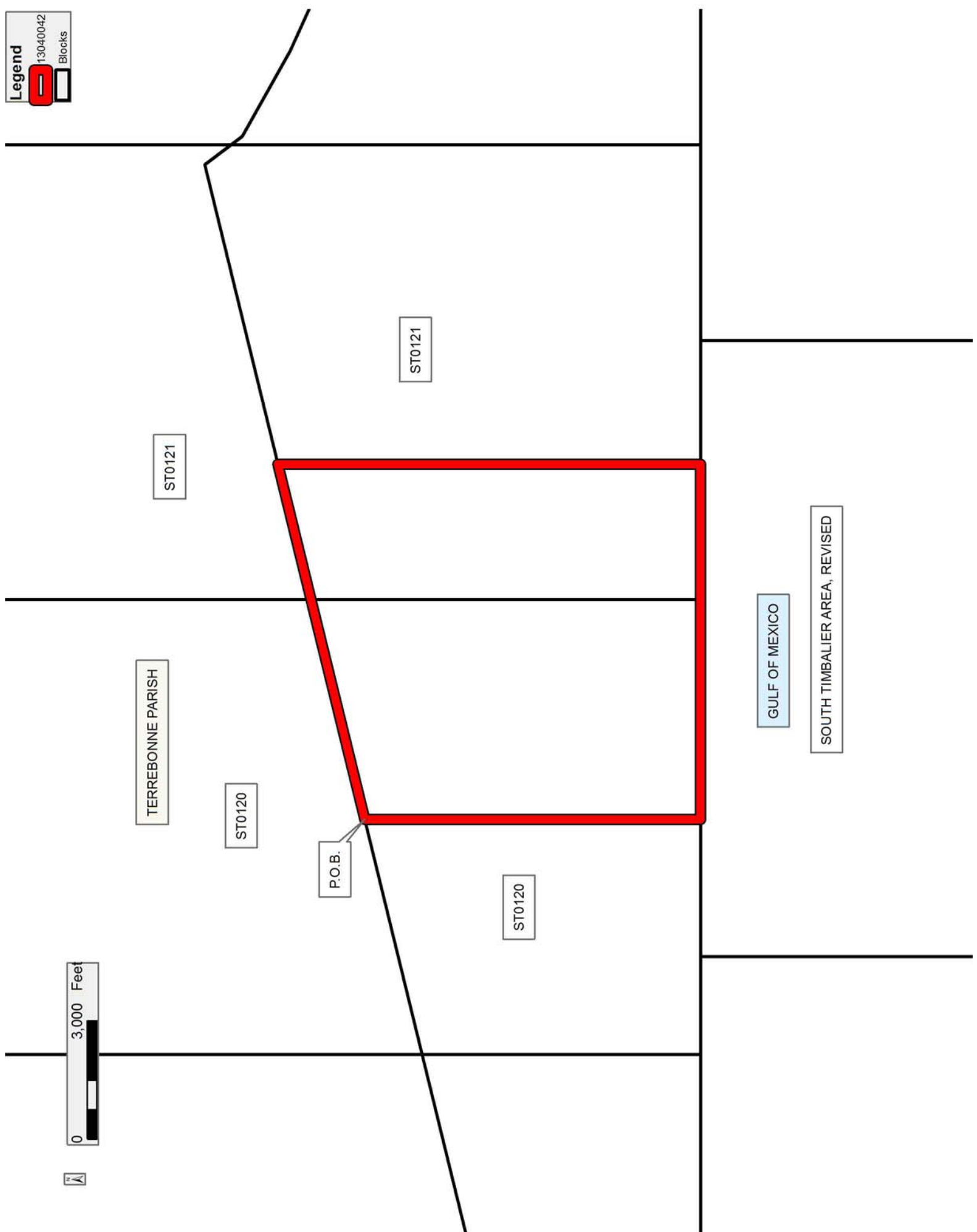
Department of Natural Resources, its Offices or Commissions, as herein above reserved.

NOTE: It appears, according to our records, that a portion of this Tract is located within the restrictive safety fairway area as set out by the Corps of Engineers, U.S. Army and/or the restrictive anchorage area as set out by the U.S. Coast Guard.

Applicant: CYPRESS ENERGY CORPORATION

Bidder	Cash Payment	Price/Acre	Rental	Oil	Gas	Other

Legend  
13040042  
Blocks



**TRACT 43130 - Portion of Block 122, South Timbalier Area, Revised, Terrebonne Parish, Louisiana**

The beds and bottoms of all water bodies belonging to the State of Louisiana located in Block 122, South Timbalier Area, Revised, together with any present lands formed by accretion to the shoreline or islands formed therein, located in Terrebonne Parish, Louisiana, owned by and not presently under mineral lease as of April 10, 2013, from the State of Louisiana, the geographical area of which is more fully described as follows: Beginning at a point within Block 122, South Timbalier Area, Revised, also being a point on the West boundary of State Lease No. 1249, as amended having Coordinates of X = 2,255,128.04 and Y = 149,862.07; thence along the boundaries of said State Lease No. 1249 the following courses: North 74 degrees 44 minutes 41 seconds East 799.88 feet to a point having Coordinates of X = 2,255,899.74 and Y = 150,072.53, North 74 degrees 44 minutes 41 seconds East 2,135.69 feet to a point having Coordinates of X = 2,257,960.18 and Y = 150,634.47 and North 18 degrees 14 minutes 36 seconds West 627.22 feet to a point on the Louisiana Coastline, as decreed by the Supreme Court of the United States, as determined by a Special Master appointed therein, in litigation styled *United States v. State of Louisiana et al No. 9 Original*, in 1975, having Coordinates of X = 2,257,763.82 and Y = 151,230.16; thence Southeasterly on a straight line to point having Coordinates of X = 2,258,386.02 and Y = 150,946.98, also being a point on the West boundary of said State Lease No. 1249; thence along the boundaries of said State Lease No. 1249 the following courses: South 641.98 feet to a point having Coordinates of X = 2,258,386.02 and Y = 150,305.00, East 1,200.00 feet to a point having Coordinates of X = 2,259,586.02 and Y = 150,305.00, South 2,280.00 feet to a point having Coordinates of X = 2,259,586.02 and Y = 148,025.00, East 480.00 feet to a point having Coordinates of X = 2,260,066.02 and Y = 145,025.00, South 2,040.00 feet to a point having Coordinates of X = 2,260,066.02 and Y = 145,985.00, East 1,140.00 feet to a point having Coordinates of X = 2,261,206.02 and Y = 145,985.00, South 1,791.47 feet to a point having Coordinates of X = 2,261,206.02 and Y = 144,193.53 and West 6,077.98 feet to a point having Coordinates of X = 2,255,128.04 and Y = 144,193.53; thence North 5,668.54 feet to the point of beginning, containing approximately **719.24 acres**, all as more particularly outlined on a plat on file in the Office of Mineral Resources, Department of Natural Resources. All bearings, distances and coordinates are based on Louisiana Coordinate System of 1927, (North or South Zone).

NOTE: The above description of the Tract nominated for lease has been provided and corrected, where required, exclusively by the nomination party. Any mineral lease selected from this Tract and awarded by the Louisiana State Mineral and Energy Board shall be without warranty of any kind, either express, implied, or statutory, including, but not limited to, the implied warranties of merchantability and fitness for a particular purpose. Should the mineral lease awarded by the Louisiana State Mineral and Energy Board be subsequently modified, cancelled or abrogated due to the existence of conflicting leases, operating agreements, private claims

or other future obligations or conditions which may affect all or any portion of the leased Tract, it shall not relieve the Lessee of the obligation to pay any bonus due thereon to the Louisiana State Mineral and Energy Board, nor shall the Louisiana State Mineral and Energy Board be obligated to refund any consideration paid by the Lessor prior to such modification, cancellation, or abrogation, including, but not limited to, bonuses, rentals and royalties.

NOTE: The State of Louisiana does hereby reserve, and this lease shall be subject to, the imprescriptible right of surface use in the nature of a servitude in favor of the Department of Natural Resources, including its Offices and Commissions, for the sole purpose of implementing, constructing, servicing and maintaining approved coastal zone management and/or restoration projects. Utilization of any and all rights derived under this lease by the mineral lessee, its agents, successors or assigns, shall not interfere with nor hinder the reasonable surface use by the Department of Natural Resources, its Offices or Commissions, as herein above reserved.

NOTE: It appears, according to our records, that a portion of this Tract is located within the restrictive safety fairway area as set out by the Corps of Engineers, U.S. Army and/or the restrictive anchorage area as set out by the U.S. Coast Guard.

Applicant: CYPRESS ENERGY CORPORATION

Bidder	Cash Payment	Price/Acre	Rental	Oil	Gas	Other

13040044



TERREBONNE BAY

SOUTH TIMBALIER AREA, REVISED

TERREBONNE PARISH

ST0122

SL 1249

ST0122

GULF OF MEXICO

P.O.B.

ST0121



**TRACT 43131 - Portion of Blocks 11, and 12, South Timbalier Area, Revised, Terrebonne Parish, Louisiana**

The beds and bottoms of all water bodies belonging to the State of Louisiana located in Blocks 11, and 12, South Timbalier Area, Revised, together with any present lands formed by accretion to the shoreline or islands formed therein, located in Terrebonne Parish, Louisiana, owned by and not presently under mineral lease as of April 10, 2013, from the State of Louisiana, the geographical area of which is more fully described as follows: Beginning at a point being the Northwest corner of Block 12, South Timbalier Area, Revised, also being the Northeast corner of State Lease No. 1249, as amended and a point on the Louisiana Coastline, as decreed by the Supreme Court of the United States, as determined by a Special Master appointed therein, in litigation styled *United States v. State of Louisiana et al No. 9 Original*, in 1975, having Coordinates of X = 2,264,446.02 and Y = 147,676.30; thence along said Coastline the following: Southeasterly on a straight line to a point having Coordinates of X = 2,264,450 and Y = 147674 and Southeasterly on a straight line to point having Coordinates of X = 2,268,798.26 and Y = 145,722.38; thence South 10,875.11 feet to a point having Coordinates of X = 2,268,798.26 and Y = 134,847.28; thence West 9,552.24 feet to a point having Coordinates of X = 2,259,246.02 and Y = 134,847.28; thence North 5,416.25 feet to the Southeast corner of said State Lease No. 2986, as amended having Coordinates of X = 2,259,246.02 and Y = 140,263.53; thence continue North 1,290.00 feet along the East boundary of said State Lease No. 2986 to its Northeast corner and a point on the South boundary of said State Lease No. 1249 having Coordinates of X = 2,259,246.02 and Y = 141,553.53; thence East 3,878.61 feet along the South boundary of said State Lease No. 1249 to the Western tip of State Lease No. 15108, as amended having Coordinates of X = 2,263,124.63 and Y = 141,553.53; thence along the boundaries of said State Lease No. 1249 the following courses: South 64 degrees 12 minutes 06 seconds East 500.00 feet to a point having Coordinates of X = 2,263,574.79 and Y = 141,335.93, South 66 degrees 02 minutes 24 seconds East 301.90 feet to a point having Coordinates of X = 2,263,850.68 and Y = 141,213.33, South 69 degrees 40 minutes 04 seconds East 537.53 feet to a point having Coordinates of X = 2,264,354.72 and Y = 141,026.56 and North 47 degrees 15 minutes 46 seconds East 124.31 feet to its Southeast corner and the Southern tip of State Lease No. 15108 having Coordinates of X = 2,264,446.02 and Y = 141,110.92; thence along the boundaries of said State Lease No. 15110 the following courses: North 47 degrees 15 minutes 46 seconds East 1,061.94 feet to a point having Coordinates of X = 2,265,226.00 and Y = 141,831.58, North 73 degrees 59 minutes 53 seconds West 393.90 feet to a point having Coordinates of X = 2,264,847.36 and Y = 141,940.17 and North 69 degrees 57 minutes 29 seconds West 427.21 feet to its Northern tip and a point on the east boundary of said State Lease No. 1249 having Coordinates of X = 2,264,446.02 and Y = 142,086.58; thence North 5,589.72 feet to the point of beginning, containing approximately **1967.20 acres**, all as more particularly outlined on a plat on file in the Office of Mineral Resources, Department of Natural Resources. All bearings, distances and



coordinates are based on Louisiana Coordinate System of 1927, (North or South Zone).

NOTE: The above description of the Tract nominated for lease has been provided and corrected, where required, exclusively by the nomination party. Any mineral lease selected from this Tract and awarded by the Louisiana State Mineral and Energy Board shall be without warranty of any kind, either express, implied, or statutory, including, but not limited to, the implied warranties of merchantability and fitness for a particular purpose. Should the mineral lease awarded by the Louisiana State Mineral and Energy Board be subsequently modified, cancelled or abrogated due to the existence of conflicting leases, operating agreements, private claims or other future obligations or conditions which may affect all or any portion of the leased Tract, it shall not relieve the Lessee of the obligation to pay any bonus due thereon to the Louisiana State Mineral and Energy Board, nor shall the Louisiana State Mineral and Energy Board be obligated to refund any consideration paid by the Lessor prior to such modification, cancellation, or abrogation, including, but not limited to, bonuses, rentals and royalties.

NOTE: The State of Louisiana does hereby reserve, and this lease shall be subject to, the imprescriptible right of surface use in the nature of a servitude in favor of the Department of Natural Resources, including its Offices and Commissions, for the sole purpose of implementing, constructing, servicing and maintaining approved coastal zone management and/or restoration projects. Utilization of any and all rights derived under this lease by the mineral lessee, its agents, successors or assigns, shall not interfere with nor hinder the reasonable surface use by the Department of Natural Resources, its Offices or Commissions, as herein above reserved.

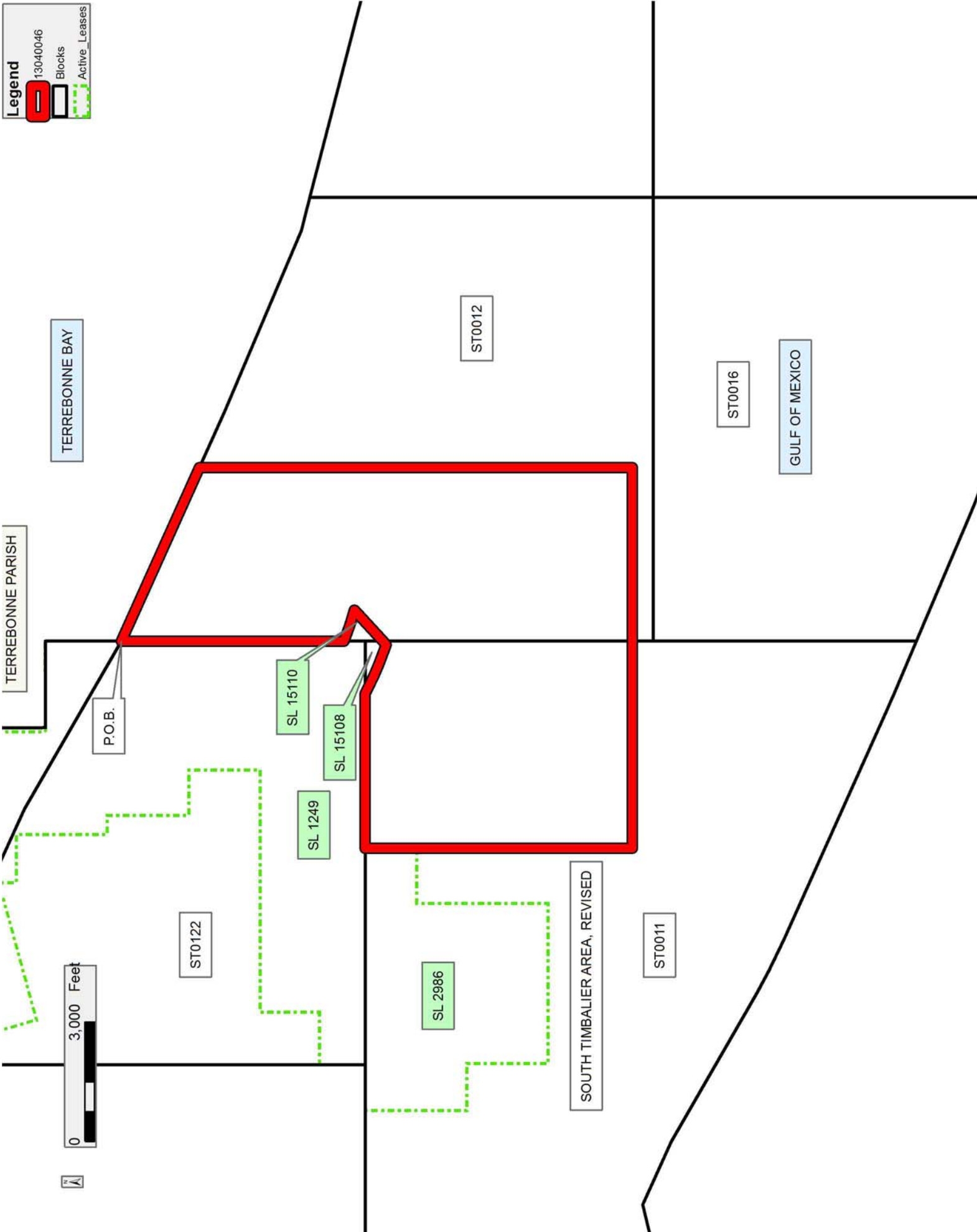
NOTE: It appears, according to our records, that a portion of this Tract is located within the restrictive safety fairway area as set out by the Corps of Engineers, U.S. Army and/or the restrictive anchorage area as set out by the U.S. Coast Guard.

Applicant: CYPRESS ENERGY CORPORATION

Bidder	Cash Payment	Price/Acre	Rental	Oil	Gas	Other

**Legend**

- 13040046
- Blocks
- Active\_Leases



**TRACT 43132 - Portion of Blocks 12, and 13, South Timbalier Area, Revised, Terrebonne Parish, Louisiana**

The beds and bottoms of all water bodies belonging to the State of Louisiana located in Blocks 12, and 13, South Timbalier Area, Revised, together with any present lands formed by accretion to the shoreline or islands formed therein, located in Terrebonne Parish, Louisiana, owned by and not presently under mineral lease as of April 10, 2013, from the State of Louisiana, the geographical area of which is more fully described as follows: Beginning at a point within Block 12, South Timbalier Area, Revised also being a point on the Louisiana Coastline, as decreed by the Supreme Court of the United States, as determined by a Special Master appointed therein, in litigation styled *United States v. State of Louisiana et al No. 9 Original*, in 1975, having Coordinates of X = 2,268,798.26 and Y = 145,722.38; thence along said Coastline the following courses: Southeasterly on a straight line to point having Coordinates of X = 2,270,205 and Y = 145,091, Southeasterly on a straight line to point having Coordinates of X = 2,274,749 and Y = 143,161 and Southeasterly on a straight line to point having Coordinates of X = 2,277,605.50 and Y = 142,418.65; thence South 7,571.38 feet to a point having Coordinates of X = 2,277,605.50 and Y = 134,847.28; thence West 8,807.24 feet to a point having Coordinates of X = 2,268,798.26 and Y = 134,847.28; thence North 10,875.11 feet to the point of beginning, containing approximately **1829.77 acres**, all as more particularly outlined on a plat on file in the Office of Mineral Resources, Department of Natural Resources. All bearings, distances and coordinates are based on Louisiana Coordinate System of 1927, (North or South Zone).

NOTE: The above description of the Tract nominated for lease has been provided and corrected, where required, exclusively by the nomination party. Any mineral lease selected from this Tract and awarded by the Louisiana State Mineral and Energy Board shall be without warranty of any kind, either express, implied, or statutory, including, but not limited to, the implied warranties of merchantability and fitness for a particular purpose. Should the mineral lease awarded by the Louisiana State Mineral and Energy Board be subsequently modified, cancelled or abrogated due to the existence of conflicting leases, operating agreements, private claims or other future obligations or conditions which may affect all or any portion of the leased Tract, it shall not relieve the Lessee of the obligation to pay any bonus due thereon to the Louisiana State Mineral and Energy Board, nor shall the Louisiana State Mineral and Energy Board be obligated to refund any consideration paid by the Lessor prior to such modification, cancellation, or abrogation, including, but not limited to, bonuses, rentals and royalties.

NOTE: The State of Louisiana does hereby reserve, and this lease shall be subject to, the imprescriptible right of surface use in the nature of a servitude in favor of the Department of Natural Resources, including its Offices and Commissions, for the sole purpose of implementing, constructing, servicing and maintaining approved coastal zone management

and/or restoration projects. Utilization of any and all rights derived under this lease by the mineral lessee, its agents, successors or assigns, shall not interfere with nor hinder the reasonable surface use by the Department of Natural Resources, its Offices or Commissions, as herein above reserved.

Applicant: CYPRESS ENERGY CORPORATION

Bidder	Cash Payment	Price/Acre	Rental	Oil	Gas	Other

Legend  
13040047  
Blocks

TERREBONNE PARISH

P.O.B.

ST0012

ST0013

GULF OF MEXICO

ST0016

SOUTH TIMBALIER AREA, REVISED

ST0017



**TRACT 43133 - Portion of Block 13, South Timbalier Area, Revised, Terrebonne Parish, Louisiana**

The beds and bottoms of all water bodies belonging to the State of Louisiana located in Block 13, South Timbalier Area, Revised, together with any present lands formed by accretion to the shoreline or islands formed therein, located in Terrebonne Parish, Louisiana, owned by and not presently under mineral lease as of April 10, 2013, from the State of Louisiana, the geographical area of which is more fully described as follows: Beginning at a point on the North boundary of Block 13, South Timbalier Area, Revised, also being a point on the Louisiana Coastline, as decreed by the Supreme Court of the United States, as determined by a Special Master appointed therein, in litigation styled *United States v. State of Louisiana et al No. 9 Original*, in 1975, having Coordinates of X = 2,277,605.50 and Y = 142,418.65; thence along said Coastline the following courses: Southeasterly on a straight line to point having Coordinates of X = 2,281,202 and Y = 141,484 and Southeasterly on a straight line to the Northwest corner of State Lease No. 17729 having Coordinates of X = 2,285,950.00 and Y = 140,584.62; thence South 5,737.34 feet along the West boundary of said State Lease No. 17729 to a point having Coordinates of X = 2,285,950.00 and Y = 134,847.28; thence West 8,344.50 feet to a point having Coordinates of X = 2,277,605.50 and Y = 134,847.28; thence North 7,571.38 feet to the point of beginning, containing approximately **1260.92 acres**, all as more particularly outlined on a plat on file in the Office of Mineral Resources, Department of Natural Resources. All bearings, distances and coordinates are based on Louisiana Coordinate System of 1927, (North or South Zone).

NOTE: The above description of the Tract nominated for lease has been provided and corrected, where required, exclusively by the nomination party. Any mineral lease selected from this Tract and awarded by the Louisiana State Mineral and Energy Board shall be without warranty of any kind, either express, implied, or statutory, including, but not limited to, the implied warranties of merchantability and fitness for a particular purpose. Should the mineral lease awarded by the Louisiana State Mineral and Energy Board be subsequently modified, cancelled or abrogated due to the existence of conflicting leases, operating agreements, private claims or other future obligations or conditions which may affect all or any portion of the leased Tract, it shall not relieve the Lessee of the obligation to pay any bonus due thereon to the Louisiana State Mineral and Energy Board, nor shall the Louisiana State Mineral and Energy Board be obligated to refund any consideration paid by the Lessor prior to such modification, cancellation, or abrogation, including, but not limited to, bonuses, rentals and royalties.

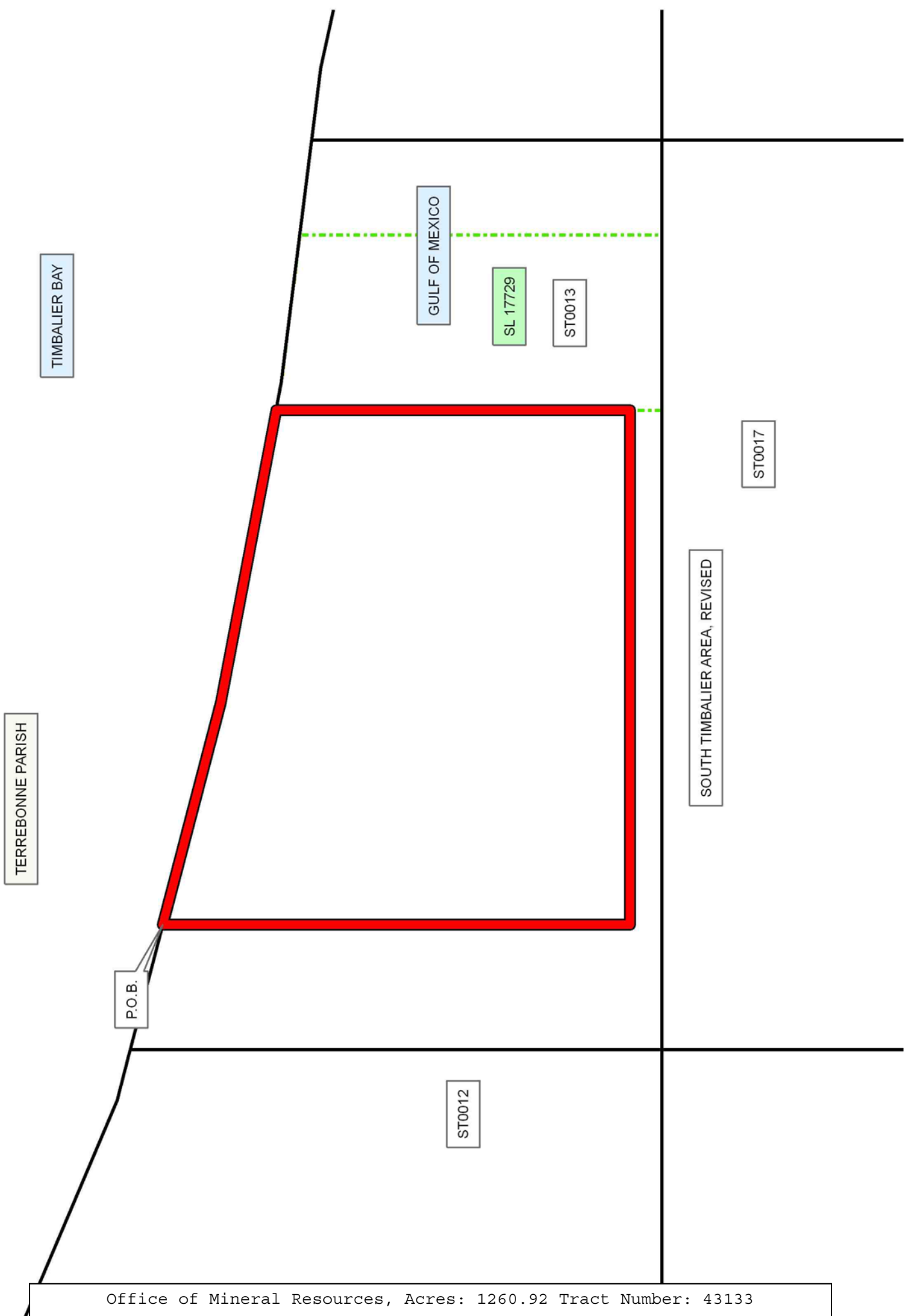
NOTE: The State of Louisiana does hereby reserve, and this lease shall be subject to, the imprescriptible right of surface use in the nature of a servitude in favor of the Department of Natural Resources, including its Offices and Commissions, for the sole purpose of implementing, constructing, servicing and maintaining approved coastal zone management

and/or restoration projects. Utilization of any and all rights derived under this lease by the mineral lessee, its agents, successors or assigns, shall not interfere with nor hinder the reasonable surface use by the Department of Natural Resources, its Offices or Commissions, as herein above reserved.

Applicant: CYPRESS ENERGY CORPORATION

Bidder	Cash Payment	Price/Acre	Rental	Oil	Gas	Other

13040048  
 Blocks  
 Active\_Lease





**TRACT 43134 - Portion of Blocks 10, and 11, South Timbalier Area, Revised, Terrebonne Parish, Louisiana**

The beds and bottoms of all water bodies belonging to the State of Louisiana located in Blocks 10, and 11, South Timbalier Area, Revised, together with any present lands formed by accretion to the shoreline or islands formed therein, located in Terrebonne Parish, Louisiana, owned by and not presently under mineral lease as of April 10, 2013, from the State of Louisiana, the geographical area of which is more fully described as follows: Beginning at a point within Block 10, South Timbalier Area, Revised having Coordinates of X = 2,245,721.53 and Y = 141,553.53; thence East 6,940.00 feet to the Northwest corner of State Lease No. 2986, as amended having Coordinates of X = 2,252,661.53 and Y = 141,553.53; thence along the boundaries of said State Lease No. 2986 the following courses: South 2,550.00 feet to a point having Coordinates of X = 2,252,661.53 and Y = 139,003.35, East 1,176.51 feet to a point having Coordinates of X = 2,253,838.04 and Y = 139,003.53, South 2,040.00 feet to a point having Coordinates of X = 2,253,838.04 and Y = 136,963.53, East 4,020.00 feet to a point having Coordinates of X = 2,257,858.04 and Y = 136,963.53, North 3,300.00 feet to a point having Coordinates of X = 2,257,858.04 and Y = 140,263.53 and East 1,387.98 feet to a point having Coordinates of X = 2,259,246.02 and Y = 140,263.53; thence South 5,416.25 feet to a point having Coordinates of 2,259,246.02 and Y = 134,847.28; thence West 13,524.49 feet to a point having Coordinates of X = 2,245,721.53 and Y = 134,847.28; thence North 6,706.25 feet to the point of beginning, containing approximately **1548.58 acres, LESS AND EXCEPT** that portion thereof, if any, lying seaward of the line three nautical miles from the coast line of Louisiana, as said three mile line has been decreed by the Supreme Court of the United States, as determined by a Special Master appointed therein, in litigation styled **United States v. State of Louisiana et al No. 9 Original**, in 1975, all as more particularly outlined on a plat in the Office of Mineral Resources, Department of Natural Resources. All bearings, distances and coordinates are based on the Louisiana Coordinate System of 1927, (South Zone).

NOTE: The above description of the Tract nominated for lease has been provided and corrected, where required, exclusively by the nomination party. Any mineral lease selected from this Tract and awarded by the Louisiana State Mineral and Energy Board shall be without warranty of any kind, either express, implied, or statutory, including, but not limited to, the implied warranties of merchantability and fitness for a particular purpose. Should the mineral lease awarded by the Louisiana State Mineral and Energy Board be subsequently modified, cancelled or abrogated due to the existence of conflicting leases, operating agreements, private claims or other future obligations or conditions which may affect all or any portion of the leased Tract, it shall not relieve the Lessee of the obligation to pay any bonus due thereon to the Louisiana State Mineral and Energy Board, nor shall the Louisiana State Mineral and Energy Board be obligated to refund any consideration paid by the Lessor prior to such

modification, cancellation, or abrogation, including, but not limited to, bonuses, rentals and royalties.

NOTE: The State of Louisiana does hereby reserve, and this lease shall be subject to, the imprescriptible right of surface use in the nature of a servitude in favor of the Department of Natural Resources, including its Offices and Commissions, for the sole purpose of implementing, constructing, servicing and maintaining approved coastal zone management and/or restoration projects. Utilization of any and all rights derived under this lease by the mineral lessee, its agents, successors or assigns, shall not interfere with nor hinder the reasonable surface use by the Department of Natural Resources, its Offices or Commissions, as herein above reserved.

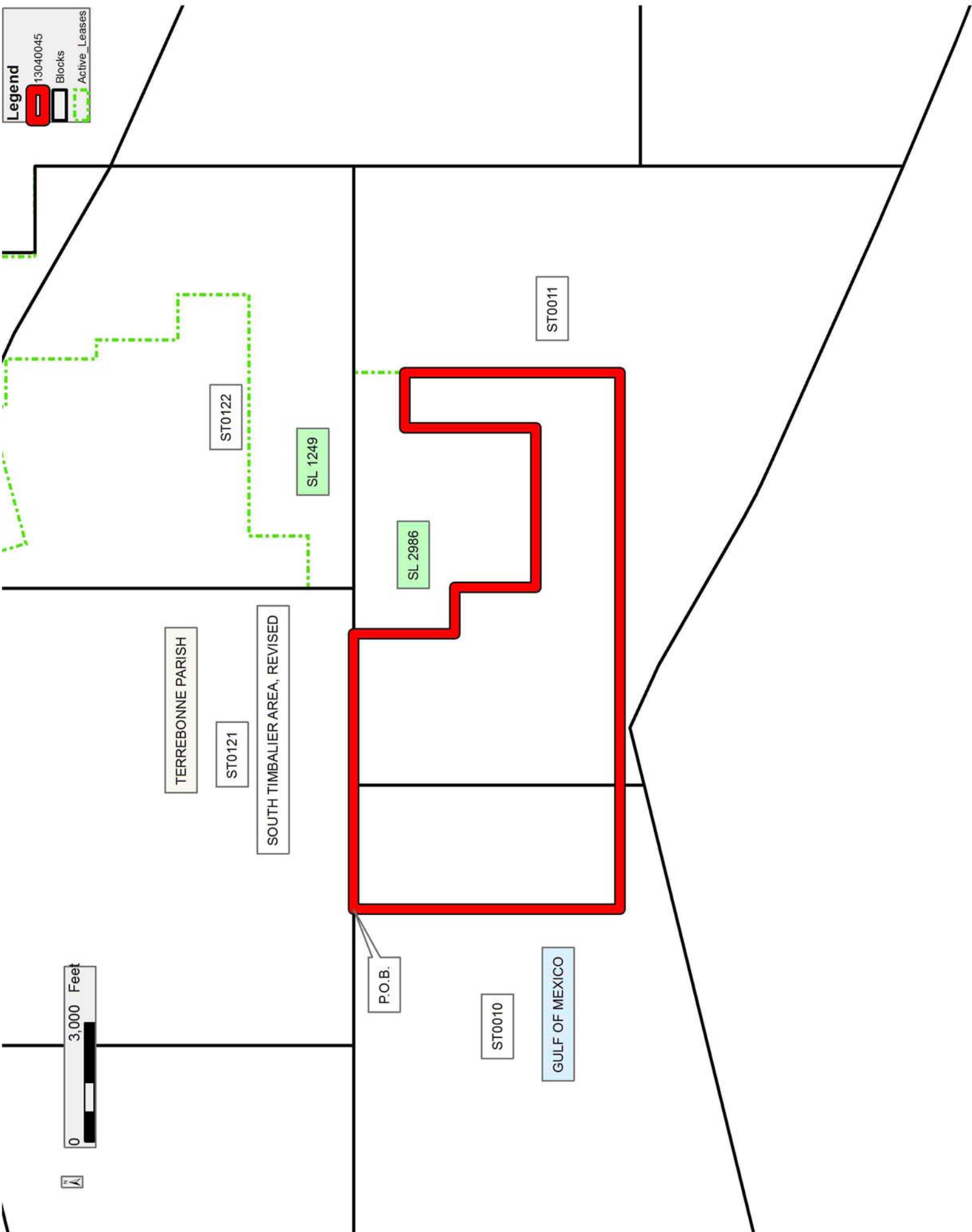
NOTE: It appears, according to our records, that a portion of this Tract is located within the restrictive safety fairway area as set out by the Corps of Engineers, U.S. Army and/or the restrictive anchorage area as set out by the U.S. Coast Guard.

Applicant: CYPRESS ENERGY CORPORATION

Bidder	Cash Payment	Price/Acre	Rental	Oil	Gas	Other

**Legend**

- 13040045
- Blocks
- Active\_Leases



**TRACT 43135 - Portion of Blocks 13, and 14, South Timbalier Area, Revised, Lafourche and Terrebonne Parishes, Louisiana**

The beds and bottoms of all water bodies belonging to the State of Louisiana located in Blocks 13, and 14, South Timbalier Area, Revised, together with any present lands formed by accretion to the shoreline or islands formed therein, located in Lafourche and Terrebonne Parishes, Louisiana, owned by and not presently under mineral lease as of April 10, 2013, from the State of Louisiana, the geographical area of which is more fully described as follows: Beginning at a point within Block 13, South Timbalier Area, Revised, also being a point on the Northeast corner of State Lease No. 17729 and a point on the Louisiana Coastline, as decreed by the Supreme Court of the United States, as determined by a Special Master appointed therein, in litigation styled United States v. State of Louisiana et al No. 9 Original, in 1975, having Coordinates of X = 2,288,800.00 and Y = 140,199.07; thence along said Coastline the following courses: Southeasterly on a straight line to point having Coordinates of X = 2,291,503 and Y = 139,861, Southeasterly on a straight line to point having Coordinates of X = 2,293,148 and Y = 139,498, Southeasterly on a straight line to point having Coordinates of X = 2,294,383 and Y = 138,846, Southeasterly on a straight line to point having Coordinates of X = 2,295,144 and Y = 138,550, Southeasterly on a straight line to point having Coordinates of X = 2,296,041 and Y = 138,519 and Northeasterly on a straight line to a point having Coordinates of X = 2,297,482.10 and Y = 138,838.73; thence South 4,508.73 feet to a point having Coordinates of X = 2,297,482.10 and Y = 134,330.00; thence West 8,682.11 feet to the Southeast corner of said State Lease No. 17729 having Coordinates of X = 2,288,800.00 and Y = 134,330.00; thence North 5,869.07 feet along the east boundary of said State Lease No. 17729 to the point of beginning, containing approximately **999.76 acres**, all as more particularly outlined on a plat on file in the Office of Mineral Resources, Department of Natural Resources. All bearings, distances and coordinates are based on Louisiana Coordinate System of 1927, (North or South Zone).

NOTE: The above description of the Tract nominated for lease has been provided and corrected, where required, exclusively by the nomination party. Any mineral lease selected from this Tract and awarded by the Louisiana State Mineral and Energy Board shall be without warranty of any kind, either express, implied, or statutory, including, but not limited to, the implied warranties of merchantability and fitness for a particular purpose. Should the mineral lease awarded by the Louisiana State Mineral and Energy Board be subsequently modified, cancelled or abrogated due to the existence of conflicting leases, operating agreements, private claims or other future obligations or conditions which may affect all or any portion of the leased Tract, it shall not relieve the Lessee of the obligation to pay any bonus due thereon to the Louisiana State Mineral and Energy Board, nor shall the Louisiana State Mineral and Energy Board be obligated to refund any consideration paid by the Lessor prior to such modification, cancellation, or abrogation, including, but not limited to, bonuses, rentals and royalties.

NOTE: The State of Louisiana does hereby reserve, and this lease shall be subject to, the imprescriptible right of surface use in the nature of a servitude in favor of the Department of Natural Resources, including its Offices and Commissions, for the sole purpose of implementing, constructing, servicing and maintaining approved coastal zone management and/or restoration projects. Utilization of any and all rights derived under this lease by the mineral lessee, its agents, successors or assigns, shall not interfere with nor hinder the reasonable surface use by the Department of Natural Resources, its Offices or Commissions, as herein above reserved.

Applicant: CYPRESS ENERGY CORPORATION

Bidder	Cash Payment	Price/Acre	Rental	Oil	Gas	Other

**Legend**

- 13040049
- Blocks
- Active\_Leases

