

TRACT 43136 - Red River Parish, Louisiana

All of the lands now or formerly constituting the beds and bottoms of all water bodies of every nature and description as to which title is vested in the State of Louisiana, together with all islands arising therein and other lands formed by accretion or by reliction, where allowed by law, excepting tax adjudicated lands, and not presently under mineral lease on April 10, 2013, situated in Red River Parish, Louisiana, and more particularly described as follows: Beginning at a point being the Northeast corner of State Lease No. 20801, also being the Southwest corner of State Lease No. 17366, as amended having Coordinates of X = 1,698,200.00 and Y = 504,087.00; thence East 1,200.00 feet along the South boundary of said State Lease No. 17366 to a point having Coordinates of X = 1,699,400.00 and Y = 504,087.00; thence South 1,200.00 feet to a point having Coordinates of X = 1,699,400.00 and Y = 502,887.00; thence West 1,199.77 feet to a point on the Eastern boundary of said State Lease No. 20801 having Coordinates of X = 1,698,200.23 and Y = 502,887.00; thence North 00 degrees 00 minutes 40 seconds West 1,200.00 feet along the East Boundary of said State Lease No. 20801 to the point of beginning, containing approximately **1 acre**, all as more particularly outlined on a plat on file in the Office of Mineral Resources, Department of Natural Resources. All bearings, distances and coordinates are based on Louisiana Coordinate System of 1927, (North or South Zone), where applicable.

NOTE: The above description of the Tract nominated for lease has been provided and corrected, where required, exclusively by the nomination party. Any mineral lease selected from this Tract and awarded by the Louisiana State Mineral and Energy Board shall be without warranty of any kind, either express, implied, or statutory, including, but not limited to, the implied warranties of merchantability and fitness for a particular purpose. Should the mineral lease awarded by the Louisiana State Mineral and Energy Board be subsequently modified, cancelled or abrogated due to the existence of conflicting leases, operating agreements, private claims or other future obligations or conditions which may affect all or any portion of the leased Tract, it shall not relieve the Lessee of the obligation to pay any bonus due thereon to the Louisiana State Mineral and Energy Board, nor shall the Louisiana State Mineral and Energy Board be obligated to refund any consideration paid by the Lessor prior to such modification, cancellation, or abrogation, including, but not limited to, bonuses, rentals and royalties.

Bidder	Cash Payment	Price/Acre	Rental	Oil	Gas	Other

Applicant: BARE BRANCH EXPLORATION

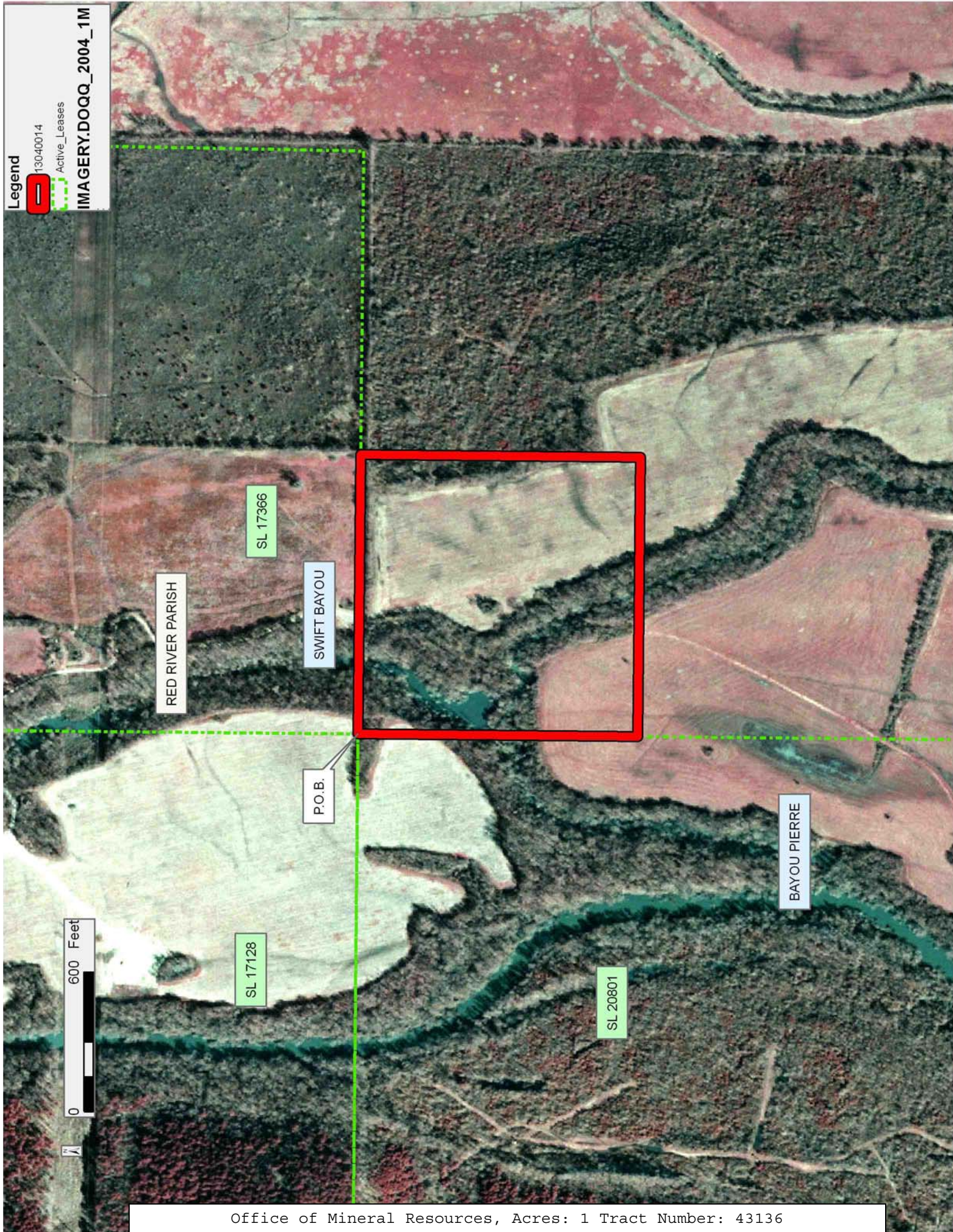
Legend

13040014



Active_Leases

IMAGERY.DOQQ_2004_1M



RED RIVER PARISH

SL 17366

SWIFT BAYOU



P.O.B.

BAYOU PIERRE

SL 17128

SL 20801



TRACT 43137 - East Baton Rouge Parish, Louisiana

All of the lands now or formerly constituting the beds and bottoms of all water bodies of every nature and description as to which title is vested in the State of Louisiana, together with all islands arising therein and other lands formed by accretion or by reliction, where allowed by law, excepting tax adjudicated lands, and not presently under mineral lease on April 10, 2013, situated in East Baton Rouge Parish, Louisiana, and more particularly described as follows: Beginning at a point having Coordinates of X = 2,075,696.39 and Y = 678,863.73; thence North 1320.00 feet to a point having Coordinates of X = 2,075,696.39 and Y = 680,183.73; thence East 1320.00 feet to a point having Coordinates of X = 2,077,016.39 and Y = 680,183.73; thence South 1320.00 feet to a point having Coordinates of X = 2,077,016.39 and Y = 678,863.73; thence West 1320.00 feet to the point of beginning, containing approximately **2 acres**, all as more particularly outlined on a plat on file in the Office of Mineral Resources, Department of Natural Resources. All bearings, distances and coordinates are based on Louisiana Coordinate System of 1927, (North or South Zone), where applicable.

NOTE: The above description of the Tract nominated for lease has been provided and corrected, where required, exclusively by the nomination party. Any mineral lease selected from this Tract and awarded by the Louisiana State Mineral and Energy Board shall be without warranty of any kind, either express, implied, or statutory, including, but not limited to, the implied warranties of merchantability and fitness for a particular purpose. Should the mineral lease awarded by the Louisiana State Mineral and Energy Board be subsequently modified, cancelled or abrogated due to the existence of conflicting leases, operating agreements, private claims or other future obligations or conditions which may affect all or any portion of the leased Tract, it shall not relieve the Lessee of the obligation to pay any bonus due thereon to the Louisiana State Mineral and Energy Board, nor shall the Louisiana State Mineral and Energy Board be obligated to refund any consideration paid by the Lessor prior to such modification, cancellation, or abrogation, including, but not limited to, bonuses, rentals and royalties.

Applicant: JEFF CHATELAIN

Bidder	Cash Payment	Price/Acre	Rental	Oil	Gas	Other

Legend

13040006

IMAGERY.DOQQ_2008_1M_CIR

T6S - R1E

EAST BATON ROUGE PARISH



COMITE RIVER

P.O.B.

0 500 Feet

TRACT 43138 - Iberville Parish, Louisiana

All of the lands now or formerly constituting the beds and bottoms of all water bodies of every nature and description as to which title is vested in the State of Louisiana, together with all islands arising therein and other lands formed by accretion or by reliction, where allowed by law, excepting tax adjudicated lands, and not presently under mineral lease on April 10, 2013, situated in Iberville Parish, Louisiana, and more particularly described as follows: Beginning at a point within the Atchafalaya Basin having Coordinates of X = 1,972,983.00 and Y = 555,398.00; thence North approximately 9,273 feet to the point of intersection with the boundary of said Atchafalaya Basin having a Coordinate of X = 1,972,983.00; thence Southeasterly along the meanders of the boundary of said Atchafalaya Basin to the point of intersection with the Northern boundary of State Lease No. 2102, as amended; thence Westerly approximately 18,054 feet along the boundary of said State Lease No. 2102 to the point of intersection with a North-South line having a Coordinate of X = 1,972,983.00; thence North approximately 7,030 feet to the point of beginning, **LESS AND EXCEPT** that portion, if any, of the above described tract that may lie outside of the boundary of the Atchafalaya Basin, **ALSO LESS AND EXCEPT** that portion, if any, of State Lease No. 2102, as amended, that may lie within the above described tract, (This tract includes only waterbottoms claimed and owned by the state and specifically excludes any land which the state may claim or own and to which the mineral rights are vested in the state), the above described tract containing approximately **71 acres**, all as more particularly outlined on a plat on file in the Office of Mineral Resources, Department of Natural Resources. All bearings, distances and coordinates are based on Louisiana Coordinate System of 1927, (North or South Zone), where applicable.

NOTE: The above description of the Tract nominated for lease has been provided and corrected, where required, exclusively by the nomination party. Any mineral lease selected from this Tract and awarded by the Louisiana State Mineral and Energy Board shall be without warranty of any kind, either express, implied, or statutory, including, but not limited to, the implied warranties of merchantability and fitness for a particular purpose. Should the mineral lease awarded by the Louisiana State Mineral and Energy Board be subsequently modified, cancelled or abrogated due to the existence of conflicting leases, operating agreements, private claims or other future obligations or conditions which may affect all or any portion of the leased Tract, it shall not relieve the Lessee of the obligation to pay any bonus due thereon to the Louisiana State Mineral and Energy Board, nor shall the Louisiana State Mineral and Energy Board be obligated to refund any consideration paid by the Lessor prior to such modification, cancellation, or abrogation, including, but not limited to, bonuses, rentals and royalties.

NOTE: This acreage is entirely within the boundary of the Atchafalaya Basin Legal Area.

Applicant: WAINWRIGHT & BOYER LANDS SERVICES, LLC

Bidder	Cash Payment	Price/Acre	Rental	Oil	Gas	Other

Legend

13040015

ATCHAFALAYA BASIN

Active Leases

IMAGERY.DOQQ_2008_1M_CIR

0 3,000 Feet



IBERVILLE PARISH

T10S - R11E

PAT BAY

MOUND DITCH

T10S - R10E

P.O.B.

ATCHAFALAYA BASIN

SL 2102

TRACT 43139 - Plaquemines Parish, Louisiana

All of the lands now or formerly constituting the beds and bottoms of all water bodies of every nature and description as to which title is vested in the State of Louisiana, together with all islands arising therein and other lands formed by accretion or by reliction, where allowed by law, excepting tax adjudicated lands, and not presently under mineral lease on April 10, 2013, situated in Plaquemines Parish, Louisiana, and more particularly described as follows: Beginning at a point having Coordinates of X = 2,529,059.16 and Y = 265,206.41; thence West 17,956.29 feet to a point having Coordinates of X = 2,511,102.87 and Y = 265,206.41; thence North 9,143.60 feet to a point having Coordinates of X = 2,511,102.87 and Y = 274,350.01; thence East 4,447.32 feet to a point being the Westernmost Northwest corner of State Lease No. 20008 having Coordinates of X = 2,515,550.19 and Y = 274,350.01; thence along the boundary of said State Lease No. 20008 the following courses: South 1,620.00 feet to a point having Coordinates of X = 2,515,550.19 and Y = 272,730.01; East 2,948.99 feet to a point having Coordinates of X = 2,518,499.18 and Y = 272,730.01; South 01 degree 53 minutes 25 seconds East 2,751.94 feet to a point having Coordinates of X = 2,518,589.95 and Y = 269,979.56; North 87 degrees 42 minutes 39 seconds East 406.62 feet to a point on the West line of State Lease No. 1753 having Coordinates of X = 2,518,996.24 and Y = 269,995.80; thence along the boundary of said State Lease No. 1753 the following courses: South 00 degrees 45 minutes 00 seconds East 2,478.52 feet to a point having Coordinates of X = 2,519,028.68 and Y = 267,517.49; North 89 degrees 15 minutes 00 seconds East 4,747.81 feet to a point having Coordinates of X = 2,523,776.08 and Y = 267,579.64; North 00 degrees 08 minutes 10 seconds West 2,607.00 feet to a point being the Easternmost Southwest corner of State Lease No. 20008 having Coordinates of X = 2,523,769.88 and Y = 270,186.63; thence along the boundary of said State Lease No. 20008 the following courses: North 87 degrees 42 minutes 39 seconds East 643.14 feet; North 00 degrees 31 minutes 40 seconds West 2,685.89 feet to a point being the Southwest corner of State Lease No. 20457 having Coordinates of X = 2,524,387.77 and Y = 272,898.10; thence East 4,671.39 feet along the Southern line of said State Lease No. 20457 to a point having Coordinates of X = 2,529,059.16 and Y = 272,898.10; thence South 7,691.69 feet to the point of beginning, containing approximately **1,073 acres**, all as more particularly outlined on a plat on file in the Office of Mineral Resources, Department of Natural Resources. All bearings, distances and coordinates are based on Louisiana Coordinate System of 1927, (North or South Zone), where applicable.

NOTE: The above description of the Tract nominated for lease has been provided and corrected, where required, exclusively by the nomination party. Any mineral lease selected from this Tract and awarded by the Louisiana State Mineral and Energy Board shall be without warranty of any kind, either express, implied, or statutory, including, but not limited to, the implied warranties of merchantability and fitness for a particular purpose. Should the mineral lease awarded by the Louisiana State Mineral and Energy Board be subsequently modified, cancelled or abrogated due to

the existence of conflicting leases, operating agreements, private claims or other future obligations or conditions which may affect all or any portion of the leased Tract, it shall not relieve the Lessee of the obligation to pay any bonus due thereon to the Louisiana State Mineral and Energy Board, nor shall the Louisiana State Mineral and Energy Board be obligated to refund any consideration paid by the Lessor prior to such modification, cancellation, or abrogation, including, but not limited to, bonuses, rentals and royalties.

NOTE: The State of Louisiana does hereby reserve, and this lease shall be subject to, the imprescriptible right of surface use in the nature of a servitude in favor of the Department of Natural Resources, including its Offices and Commissions, for the sole purpose of implementing, constructing, servicing and maintaining approved coastal zone management and/or restoration projects. Utilization of any and all rights derived under this lease by the mineral lessee, its agents, successors or assigns, shall not interfere with nor hinder the reasonable surface use by the Department of Natural Resources, its Offices or Commissions, as herein above reserved.

Applicant: OIL LAND SERVICES, INC.

Bidder	Cash Payment	Price/Acre	Rental	Oil	Gas	Other

Legend

13040034



Active_Leases



IMAGERY.DOQQ_2008_1M_CIR

0 3,000 Feet



PLAQUEMINES PARISH

SL 20457

GRAND BAYOU

SL 20008

SL 1753

LAKE WASHINGTON

P.O.B.

TRACT 43140 - Plaquemines Parish, Louisiana

All of the lands now or formerly constituting the beds and bottoms of all water bodies of every nature and description as to which title is vested in the State of Louisiana, together with all islands arising therein and other lands formed by accretion or by reliction, where allowed by law, excepting tax adjudicated lands, and not presently under mineral lease on April 10, 2013, situated in Plaquemines Parish, Louisiana, and more particularly described as follows: Beginning at a point having Coordinates of X = 2,539,310.00 and Y = 272,898.10; thence East 10,690.00 feet to a point having Coordinates of X = 2,550,000.00 and Y = 272,898.10; thence South 9,727.10 feet to a point having Coordinates of X = 2,550,000.00 and Y = 263,171.00; thence West 10,690.00 feet to a point having Coordinates of X = 2,539,310.00 and Y = 263,171.00; thence North 9,727.10 feet to the point of beginning, containing approximately **1,350 acres**, all as more particularly outlined on a plat on file in the Office of Mineral Resources, Department of Natural Resources. All bearings, distances and coordinates are based on Louisiana Coordinate System of 1927, (North or South Zone), where applicable.

NOTE: The above description of the Tract nominated for lease has been provided and corrected, where required, exclusively by the nomination party. Any mineral lease selected from this Tract and awarded by the Louisiana State Mineral and Energy Board shall be without warranty of any kind, either express, implied, or statutory, including, but not limited to, the implied warranties of merchantability and fitness for a particular purpose. Should the mineral lease awarded by the Louisiana State Mineral and Energy Board be subsequently modified, cancelled or abrogated due to the existence of conflicting leases, operating agreements, private claims or other future obligations or conditions which may affect all or any portion of the leased Tract, it shall not relieve the Lessee of the obligation to pay any bonus due thereon to the Louisiana State Mineral and Energy Board, nor shall the Louisiana State Mineral and Energy Board be obligated to refund any consideration paid by the Lessor prior to such modification, cancellation, or abrogation, including, but not limited to, bonuses, rentals and royalties.

NOTE: The State of Louisiana does hereby reserve, and this lease shall be subject to, the imprescriptible right of surface use in the nature of a servitude in favor of the Department of Natural Resources, including its Offices and Commissions, for the sole purpose of implementing, constructing, servicing and maintaining approved coastal zone management and/or restoration projects. Utilization of any and all rights derived under this lease by the mineral lessee, its agents, successors or assigns, shall not interfere with nor hinder the reasonable surface use by the Department of Natural Resources, its Offices or Commissions, as herein above reserved.

Applicant: OIL LAND SERVICES, INC.

Bidder	Cash Payment	Price/Acre	Rental	Oil	Gas	Other

Legend

13040032

IMAGERY.DOQQ_2008_1M_CIR

0 3,000 Feet

PLAQUEMINES PARISH

T19S - R28E

BAY VACHERIE

P.O.B.

MISSISSIPPI RIVER

ADAMS BAY

TRACT 43141 - Plaquemines Parish, Louisiana

All of the lands now or formerly constituting the beds and bottoms of all water bodies of every nature and description as to which title is vested in the State of Louisiana, together with all islands arising therein and other lands formed by accretion or by reliction, where allowed by law, excepting tax adjudicated lands, and not presently under mineral lease on April 10, 2013, situated in Plaquemines Parish, Louisiana, and more particularly described as follows: Beginning at a point having Coordinates of X = 2,539,310.00 and Y = 263,171.00; thence West 10,250.84 feet to a point having Coordinates of X = 2,529,059.16 and Y = 263,171.00; thence North 9,727.10 feet to a point on the Southernmost boundary of State Lease No. 20457 having Coordinates of X = 2,529,059.16 and Y = 272,898.10; thence East 8,090.84 feet along the South line of said State Lease No. 20457 to its Southeast corner having Coordinates of X = 2,537,150.00 and Y = 272,898.10; thence East 2,160.00 feet to a point having Coordinates of X = 2,539,310.00 and Y = 272,898.10; thence South 9,727.10 feet to the point of beginning, containing approximately **1,463 acres**, all as more particularly outlined on a plat on file in the Office of Mineral Resources, Department of Natural Resources. All bearings, distances and coordinates are based on Louisiana Coordinate System of 1927, (North or South Zone), where applicable.

NOTE: The above description of the Tract nominated for lease has been provided and corrected, where required, exclusively by the nomination party. Any mineral lease selected from this Tract and awarded by the Louisiana State Mineral and Energy Board shall be without warranty of any kind, either express, implied, or statutory, including, but not limited to, the implied warranties of merchantability and fitness for a particular purpose. Should the mineral lease awarded by the Louisiana State Mineral and Energy Board be subsequently modified, cancelled or abrogated due to the existence of conflicting leases, operating agreements, private claims or other future obligations or conditions which may affect all or any portion of the leased Tract, it shall not relieve the Lessee of the obligation to pay any bonus due thereon to the Louisiana State Mineral and Energy Board, nor shall the Louisiana State Mineral and Energy Board be obligated to refund any consideration paid by the Lessor prior to such modification, cancellation, or abrogation, including, but not limited to, bonuses, rentals and royalties.

NOTE: The State of Louisiana does hereby reserve, and this lease shall be subject to, the imprescriptible right of surface use in the nature of a servitude in favor of the Department of Natural Resources, including its Offices and Commissions, for the sole purpose of implementing, constructing, servicing and maintaining approved coastal zone management and/or restoration projects. Utilization of any and all rights derived under this lease by the mineral lessee, its agents, successors or assigns, shall not interfere with nor hinder the reasonable surface use by the Department of Natural Resources, its Offices or Commissions, as herein above reserved.

Applicant: OIL LAND SERVICES, INC.

Bidder	Cash Payment	Price/Acre	Rental	Oil	Gas	Other

Legend

13040033



Active_Leases



IMAGERY.DOQQ_2008_1M_CIR

0 3,000 Feet



PLAQUEMINES PARISH

T19S - R28E

ADAMS BAY

P.O.B.

SL 20457

BAYOU MARINGOUIN

GRAND BAYOU

TRACT 43142 - Plaquemines Parish, Louisiana

All of the lands now or formerly constituting the beds and bottoms of all water bodies of every nature and description as to which title is vested in the State of Louisiana, together with all islands arising therein and other lands formed by accretion or by reliction, where allowed by law, excepting tax adjudicated lands, and not presently under mineral lease on April 10, 2013, situated in Plaquemines Parish, Louisiana, and more particularly described as follows: Beginning at a point beginning being the Northeast Corner of State Lease No. 1753 having Coordinates of X = 2,523,765.19 and Y = 272,160.20, said point also being a point on the Southern boundary of State Lease No. 20008; thence South 00 degrees 08 minutes 10 seconds East 1973.58 feet along the common boundary of said State Lease No. 1753 and State Lease No. 20008 to a point being a Southeast corner of said State Lease No. 20008 having Coordinates of X = 2,523,769.88 and Y = 270,186.63; thence continue along the boundary of said State Lease No. 1753 the following: South 00 degrees 08 minutes 10 seconds East 2,607.00 feet to a point having Coordinates of X = 2,523,776.08 and Y = 267,579.64; South 89 degrees 15 minutes 00 seconds West 4,747.81 feet to a point having Coordinates of X = 2,519,028.68 and Y = 267,517.49; and North 00 degrees 45 minutes 00 seconds West 2,478.53 feet to a point being a Southwest corner of said State Lease No. 20008 having Coordinates of X = 2,518,996.24 and Y = 269,995.80; thence continue along the common boundary of said State Lease No. 1753 and said State Lease No. 20008 the following: North 00 degrees 45 minutes 00 seconds West 2,101.89 feet to a point having Coordinates of X = 2,518,968.73 and Y = 272,097.41, and North 89 degrees 15 minutes 00 seconds East 4,796.88 feet to point of beginning, containing approximately **19 acres**, all as more particularly outlined on a plat on file in the Office of Mineral Resources, Department of Natural Resources. All bearings, distances and coordinates are based on Louisiana Coordinate System of 1927, (North or South Zone), where applicable.

NOTE: The above description of the Tract nominated for lease has been provided and corrected, where required, exclusively by the nomination party. Any mineral lease selected from this Tract and awarded by the Louisiana State Mineral and Energy Board shall be without warranty of any kind, either express, implied, or statutory, including, but not limited to, the implied warranties of merchantability and fitness for a particular purpose. Should the mineral lease awarded by the Louisiana State Mineral and Energy Board be subsequently modified, cancelled or abrogated due to the existence of conflicting leases, operating agreements, private claims or other future obligations or conditions which may affect all or any portion of the leased Tract, it shall not relieve the Lessee of the obligation to pay any bonus due thereon to the Louisiana State Mineral and Energy Board, nor shall the Louisiana State Mineral and Energy Board be obligated to refund any consideration paid by the Lessor prior to such modification, cancellation, or abrogation, including, but not limited to, bonuses, rentals and royalties.

NOTE: The State of Louisiana does hereby reserve, and this lease shall be subject to, the imprescriptible right of surface use in the nature of a servitude in favor of the Department of Natural Resources, including its Offices and Commissions, for the sole purpose of implementing, constructing, servicing and maintaining approved coastal zone management and/or restoration projects. Utilization of any and all rights derived under this lease by the mineral lessee, its agents, successors or assigns, shall not interfere with nor hinder the reasonable surface use by the Department of Natural Resources, its Offices or Commissions, as herein above reserved.

Applicant: OIL LAND SERVICES, INC.

Bidder	Cash Payment	Price/Acre	Rental	Oil	Gas	Other

Legend

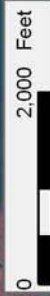
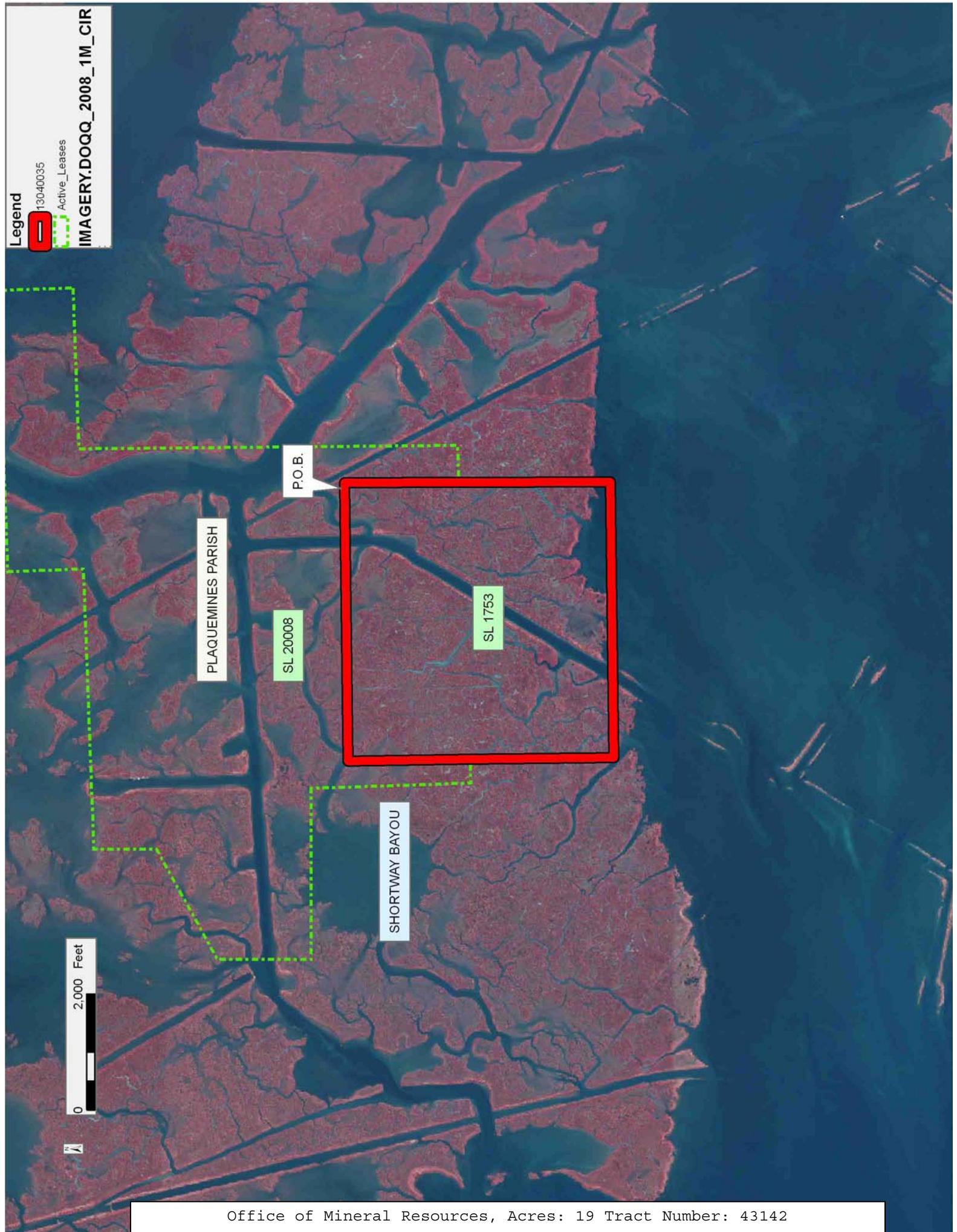
13040035



Active_Leases



IMAGERY.DOQQ_2008_1M_CIR



PLAQUEMINES PARISH

SL 20008

P.O.B.

SHORTWAY BAYOU

SL 1753

TRACT 43143 - Plaquemines Parish, Louisiana

All of the lands now or formerly constituting the beds and bottoms of all water bodies of every nature and description as to which title is vested in the State of Louisiana, together with all islands arising therein and other lands formed by accretion or by reliction, where allowed by law, excepting tax adjudicated lands, and not presently under mineral lease on April 10, 2013, situated in Plaquemines Parish, Louisiana, and more particularly described as follows: Beginning at a point having Coordinates of X = 2,518,169.16 and Y = 265,206.41; thence South 10,000.00 feet to a point having Coordinates of X = 2,518,169.16 and Y = 255,206.41; thence West 10,890.00 feet to a point having Coordinates of X = 2,507,279.16 and Y = 255,206.41; thence North 10,000.00 feet to a point having Coordinates of X = 2,507,279.16 and Y = 265,206.41; thence East 10,890.00 feet to the point of beginning, containing approximately **1,912 acres**, all as more particularly outlined on a plat on file in the Office of Mineral Resources, Department of Natural Resources. All bearings, distances and coordinates are based on Louisiana Coordinate System of 1927, (North or South Zone), where applicable.

NOTE: The above description of the Tract nominated for lease has been provided and corrected, where required, exclusively by the nomination party. Any mineral lease selected from this Tract and awarded by the Louisiana State Mineral and Energy Board shall be without warranty of any kind, either express, implied, or statutory, including, but not limited to, the implied warranties of merchantability and fitness for a particular purpose. Should the mineral lease awarded by the Louisiana State Mineral and Energy Board be subsequently modified, cancelled or abrogated due to the existence of conflicting leases, operating agreements, private claims or other future obligations or conditions which may affect all or any portion of the leased Tract, it shall not relieve the Lessee of the obligation to pay any bonus due thereon to the Louisiana State Mineral and Energy Board, nor shall the Louisiana State Mineral and Energy Board be obligated to refund any consideration paid by the Lessor prior to such modification, cancellation, or abrogation, including, but not limited to, bonuses, rentals and royalties.

NOTE: The State of Louisiana does hereby reserve, and this lease shall be subject to, the imprescriptible right of surface use in the nature of a servitude in favor of the Department of Natural Resources, including its Offices and Commissions, for the sole purpose of implementing, constructing, servicing and maintaining approved coastal zone management and/or restoration projects. Utilization of any and all rights derived under this lease by the mineral lessee, its agents, successors or assigns, shall not interfere with nor hinder the reasonable surface use by the Department of Natural Resources, its Offices or Commissions, as herein above reserved.

Applicant: OIL LAND SERVICES, INC.

Bidder	Cash Payment	Price/Acre	Rental	Oil	Gas	Other

Legend

13040024

IMAGERY.DOQQ_2008_1M_CIR

PLAQUEMINES PARISH

LAKE WASHINGTON

LAKE ROBINSON

P.O.B.

0 3,000 Feet

TRACT 43144 - Plaquemines Parish, Louisiana

All of the lands now or formerly constituting the beds and bottoms of all water bodies of every nature and description as to which title is vested in the State of Louisiana, together with all islands arising therein and other lands formed by accretion or by reliction, where allowed by law, excepting tax adjudicated lands, and not presently under mineral lease on April 10, 2013, situated in Plaquemines Parish, Louisiana, and more particularly described as follows: Beginning at a point having Coordinates of X = 2,529,059.16 and Y = 265,206.41; thence South 10,000.00 feet to a point having Coordinates of X = 2,529,059.16 and Y = 255,206.41; thence West 10,890.00 feet to a point having Coordinates of X = 2,518,169.16 and Y = 255,206.41; thence North 10,000.00 feet to a point having Coordinates of X = 2,518,169.16 and Y = 265,206.41; thence East 10,890.00 feet to the point of beginning, containing approximately **2,101 acres**, all as more particularly outlined on a plat on file in the Office of Mineral Resources, Department of Natural Resources. All bearings, distances and coordinates are based on Louisiana Coordinate System of 1927, (North or South Zone), where applicable.

NOTE: The above description of the Tract nominated for lease has been provided and corrected, where required, exclusively by the nomination party. Any mineral lease selected from this Tract and awarded by the Louisiana State Mineral and Energy Board shall be without warranty of any kind, either express, implied, or statutory, including, but not limited to, the implied warranties of merchantability and fitness for a particular purpose. Should the mineral lease awarded by the Louisiana State Mineral and Energy Board be subsequently modified, cancelled or abrogated due to the existence of conflicting leases, operating agreements, private claims or other future obligations or conditions which may affect all or any portion of the leased Tract, it shall not relieve the Lessee of the obligation to pay any bonus due thereon to the Louisiana State Mineral and Energy Board, nor shall the Louisiana State Mineral and Energy Board be obligated to refund any consideration paid by the Lessor prior to such modification, cancellation, or abrogation, including, but not limited to, bonuses, rentals and royalties.

NOTE: The State of Louisiana does hereby reserve, and this lease shall be subject to, the imprescriptible right of surface use in the nature of a servitude in favor of the Department of Natural Resources, including its Offices and Commissions, for the sole purpose of implementing, constructing, servicing and maintaining approved coastal zone management and/or restoration projects. Utilization of any and all rights derived under this lease by the mineral lessee, its agents, successors or assigns, shall not interfere with nor hinder the reasonable surface use by the Department of Natural Resources, its Offices or Commissions, as herein above reserved.

Applicant: OIL LAND SERVICES, INC.

Bidder	Cash Payment	Price/Acre	Rental	Oil	Gas	Other

Legend

13040023

IMAGERY.DOQQ_2008_1M_CIR



0 3,000 Feet



PLAQUEMINES PARISH

P.O.B.

LAKE WASHINGTON

BAY AUX FERRE



TRACT 43145 - Plaquemines Parish, Louisiana

All of the lands now or formerly constituting the beds and bottoms of all water bodies of every nature and description as to which title is vested in the State of Louisiana, together with all islands arising therein and other lands formed by accretion or by reliction, where allowed by law, excepting tax adjudicated lands, and not presently under mineral lease on April 10, 2013, situated in Plaquemines Parish, Louisiana, and more particularly described as follows: Beginning at a point having Coordinates of X = 2,529,059.16 and Y = 263,171.00; thence East 10,250.84 feet to a point having Coordinates of X = 2,539,310.00 and Y = 263,171.00; thence South 10,187.09 feet to a point having Coordinates of X = 2,539,310.00 and Y = 252,983.91; thence West 10,250.84 feet to a point having Coordinates of X = 2,529,059.16 and Y = 252,983.91; thence North 10,187.09 feet to the point of beginning, **LESS AND EXCEPT** any right, title, and interest in lands owned by and not under lease from the State of Louisiana, on behalf of the Plaquemines Parish School Board, situated in Section 16, Township 20 South, Range 28 East, Plaquemines Parish, Louisiana, contained within the above described tract, containing approximately **1,594 acres**, all as more particularly outlined on a plat on file in the Office of Mineral Resources, Department of Natural Resources. All bearings, distances and coordinates are based on Louisiana Coordinate System of 1927, (North or South Zone), where applicable.

NOTE: The above description of the Tract nominated for lease has been provided and corrected, where required, exclusively by the nomination party. Any mineral lease selected from this Tract and awarded by the Louisiana State Mineral and Energy Board shall be without warranty of any kind, either express, implied, or statutory, including, but not limited to, the implied warranties of merchantability and fitness for a particular purpose. Should the mineral lease awarded by the Louisiana State Mineral and Energy Board be subsequently modified, cancelled or abrogated due to the existence of conflicting leases, operating agreements, private claims or other future obligations or conditions which may affect all or any portion of the leased Tract, it shall not relieve the Lessee of the obligation to pay any bonus due thereon to the Louisiana State Mineral and Energy Board, nor shall the Louisiana State Mineral and Energy Board be obligated to refund any consideration paid by the Lessor prior to such modification, cancellation, or abrogation, including, but not limited to, bonuses, rentals and royalties.

NOTE: The State of Louisiana does hereby reserve, and this lease shall be subject to, the imprescriptible right of surface use in the nature of a servitude in favor of the Department of Natural Resources, including its Offices and Commissions, for the sole purpose of implementing, constructing, servicing and maintaining approved coastal zone management and/or restoration projects. Utilization of any and all rights derived under this lease by the mineral lessee, its agents, successors or assigns, shall not interfere with nor hinder the reasonable surface use by the

Department of Natural Resources, its Offices or Commissions, as herein above reserved.

Applicant: OIL LAND SERVICES, INC.

Bidder	Cash Payment	Price/Acre	Rental	Oil	Gas	Other

Legend

13040031

IMAGERY.DOQQ_2008_1M_CIR

ADAMS BAY

PLAQUEMINES PARISH

HALFMOON BAY

P.O.B.

BAY DE SUITE

0 3,000 Feet

