

**TRACT 43156 - Portion of Block 2, Grand Isle Area, Blocks 12, and 13, West Delta Area, Plaquemines Parish, Louisiana**

All of the lands now or formerly constituting the beds and bottoms of all water bodies of every nature and description as to which title is vested in the State of Louisiana, together with all islands arising therein and other lands formed by accretion or by reliction, where allowed by law, excepting tax adjudicated lands, and not presently under mineral lease on April 10, 2013, situated in Plaquemines Parish, Louisiana, and more particularly described as follows: Beginning at a point within Block 2, Grand Isle Area, having Coordinates of X = 2,466,213.00 and Y = 223,234.00; thence East 6,204.93 feet to a common point on the East Line of Block 2, Grand Isle Area and the West Line of Block 13, West Delta Area having Coordinates of X = 2,472,417.93 and Y = 223,234.00; thence East 3,754.07 feet to a point on the common line of Block 13 and Block 12, West Delta Area, having Coordinates of X = 2,476,172.00 and Y = 223,234.00; thence East 8,521.00 feet to a point having Coordinates of X = 2,484,693.00 and Y = 223,234.00; thence South 5,462.00 feet to a point having Coordinates of X = 2,484,693.00 and Y = 217,772.00; thence West 8,521.00 feet to a point on the common line of Block 12 and Block 13, West Delta Area, having Coordinates of X = 2,476,172.00 and Y = 217,772.00; thence West 3,754.07 feet to the common line of Block 13, West Delta Area and Block 2, Grand Isle Area having Coordinates of X = 2,472,417.93 and Y = 217,772.00; thence West 6,204.93 feet to a point having Coordinates of X = 2,466,213.00 and Y = 217,772.00; thence North 5,462.00 feet to the point of beginning, containing approximately **2,317.21 acres**, all as more particularly outlined on a plat on file in the Office of Mineral Resources, Department of Natural Resources. All bearings, distances and coordinates are based on Louisiana Coordinate System of 1927, (North or South Zone), where applicable.

NOTE: The above description of the Tract nominated for lease has been provided and corrected, where required, exclusively by the nomination party. Any mineral lease selected from this Tract and awarded by the Louisiana State Mineral and Energy Board shall be without warranty of any kind, either express, implied, or statutory, including, but not limited to, the implied warranties of merchantability and fitness for a particular purpose. Should the mineral lease awarded by the Louisiana State Mineral and Energy Board be subsequently modified, cancelled or abrogated due to the existence of conflicting leases, operating agreements, private claims or other future obligations or conditions which may affect all or any portion of the leased Tract, it shall not relieve the Lessee of the obligation to pay any bonus due thereon to the Louisiana State Mineral and Energy Board, nor shall the Louisiana State Mineral and Energy Board be obligated to refund any consideration paid by the Lessor prior to such modification, cancellation, or abrogation, including, but not limited to, bonuses, rentals and royalties.

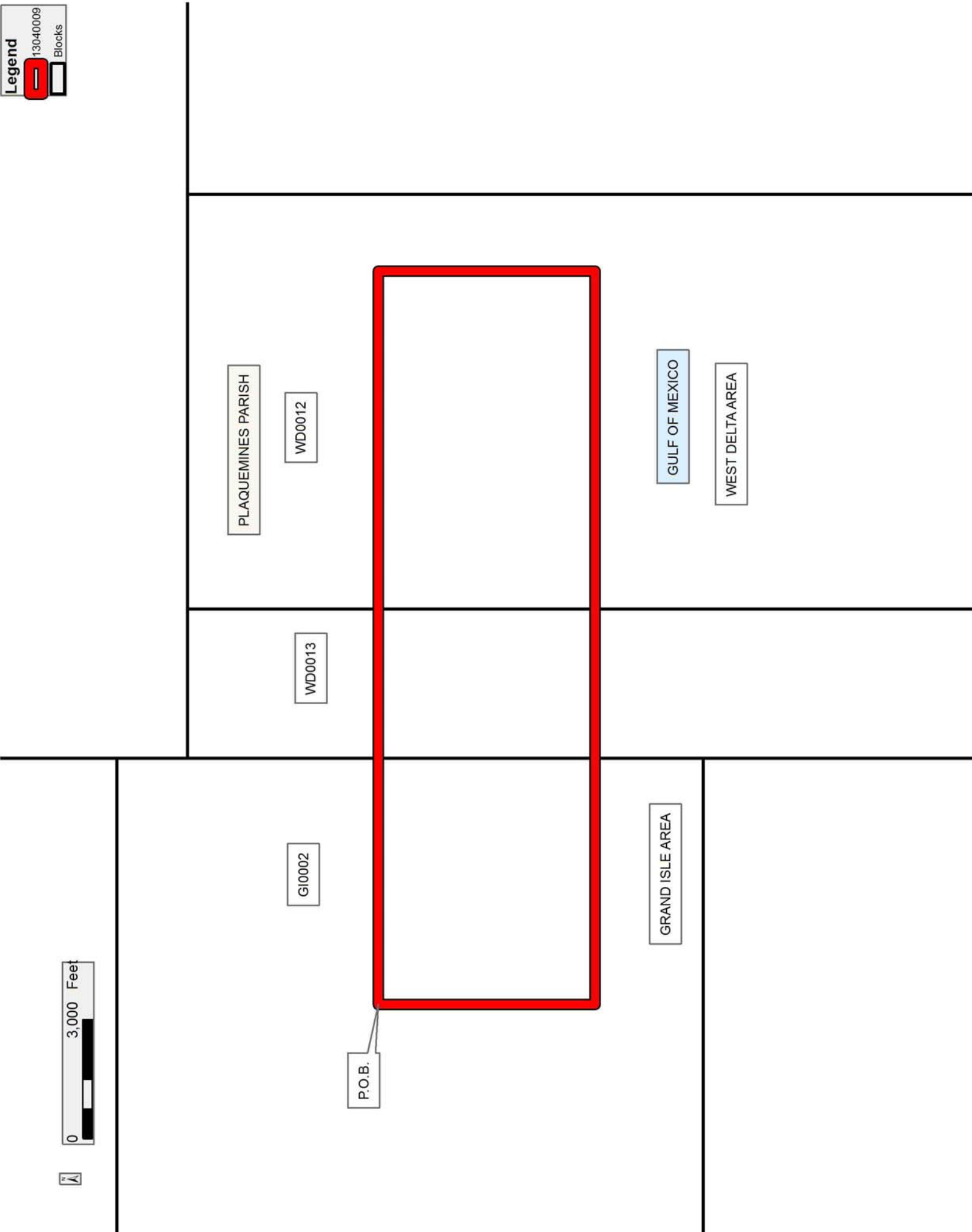
NOTE: The State of Louisiana does hereby reserve, and this lease shall be subject to, the imprescriptible right of surface use in the nature of a servitude in favor of the Department of Natural Resources, including its

Offices and Commissions, for the sole purpose of implementing, constructing, servicing and maintaining approved coastal zone management and/or restoration projects. Utilization of any and all rights derived under this lease by the mineral lessee, its agents, successors or assigns, shall not interfere with nor hinder the reasonable surface use by the Department of Natural Resources, its Offices or Commissions, as herein above reserved.

Applicant: PUMKIN ISLAND INVESTMENT CO.

Bidder	Cash Payment	Price/Acre	Rental	Oil	Gas	Other

Legend  
13040009  
Blocks



**TRACT 43157 - Terrebonne Parish, Louisiana**

All of the lands now or formerly constituting the beds and bottoms of all water bodies of every nature and description as to which title is vested in the State of Louisiana, together with all islands arising therein and other lands formed by accretion or by reliction, where allowed by law, excepting tax adjudicated lands, and not presently under mineral lease on April 10, 2013, situated in Terrebonne Parish, Louisiana, and more particularly described as follows: Beginning at a point having Coordinates of X = 2,271,846.52 and Y = 223,423.93; thence East 10,478.79 feet to a point having Coordinates of X = 2,282,325.32 and Y = 223,423.93; thence South 10,389.19 feet to a point having Coordinates of X = 2,282,325.32 and Y = 213,034.74; thence West 10,478.79 feet to a point having Coordinates of X = 2,271,846.52 and Y = 213,034.74; thence North 10,389.19 feet to the point of beginning, containing approximately **2,499.22 acres**, all as more particularly outlined on a plat on file in the Office of Mineral Resources, Department of Natural Resources. All bearings, distances and coordinates are based on Louisiana Coordinate System of 1927, (North or South Zone), where applicable.

NOTE: The above description of the Tract nominated for lease has been provided and corrected, where required, exclusively by the nomination party. Any mineral lease selected from this Tract and awarded by the Louisiana State Mineral and Energy Board shall be without warranty of any kind, either express, implied, or statutory, including, but not limited to, the implied warranties of merchantability and fitness for a particular purpose. Should the mineral lease awarded by the Louisiana State Mineral and Energy Board be subsequently modified, cancelled or abrogated due to the existence of conflicting leases, operating agreements, private claims or other future obligations or conditions which may affect all or any portion of the leased Tract, it shall not relieve the Lessee of the obligation to pay any bonus due thereon to the Louisiana State Mineral and Energy Board, nor shall the Louisiana State Mineral and Energy Board be obligated to refund any consideration paid by the Lessor prior to such modification, cancellation, or abrogation, including, but not limited to, bonuses, rentals and royalties.

NOTE: The State of Louisiana does hereby reserve, and this lease shall be subject to, the imprescriptible right of surface use in the nature of a servitude in favor of the Department of Natural Resources, including its Offices and Commissions, for the sole purpose of implementing, constructing, servicing and maintaining approved coastal zone management and/or restoration projects. Utilization of any and all rights derived under this lease by the mineral lessee, its agents, successors or assigns, shall not interfere with nor hinder the reasonable surface use by the Department of Natural Resources, its Offices or Commissions, as herein above reserved.

Applicant: CYPRESS ENERGY CORPORATION

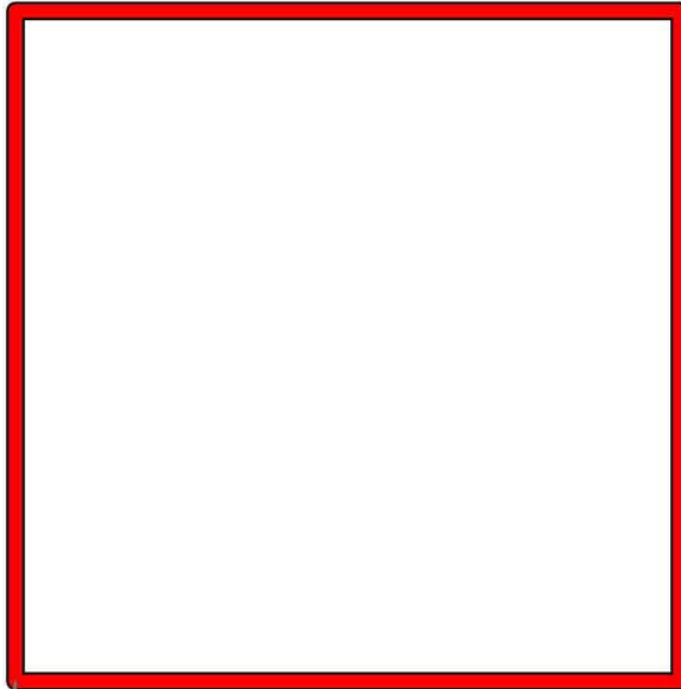
Bidder	Cash Payment	Price/Acre	Rental	Oil	Gas	Other



TERREBONNE PARISH

LAKE BARRE

P.O.B.



**TRACT 43158 - Terrebonne Parish, Louisiana**

All of the lands now or formerly constituting the beds and bottoms of all water bodies of every nature and description as to which title is vested in the State of Louisiana, together with all islands arising therein and other lands formed by accretion or by reliction, where allowed by law, excepting tax adjudicated lands, and not presently under mineral lease on April 10, 2013, situated in Terrebonne Parish, Louisiana, and more particularly described as follows: Beginning at a point having Coordinates of X = 2,282,325.32 and Y = 223,423.93; thence East 10,889.26 feet to a point having Coordinates of X = 2,293,214.58 and Y = 223,423.93; thence South 10,389.19 feet to a point having Coordinates of X = 2,293,214.58 and Y = 213,034.74; thence West 10,889.26 feet to a point having Coordinates of X = 2,282,325.32 and Y = 213,034.74; thence North 10,389.19 feet to the point of beginning, **LESS AND EXCEPT** any right, title, and interest in lands owned by and not under lease from the State of Louisiana, on behalf of the Terrebonne Parish School Board, situated in Section 16, Township 21 South, Range 20 East, Terrebonne Parish, Louisiana, contained within the above described tract, containing approximately **2,466 acres**, all as more particularly outlined on a plat on file in the Office of Mineral Resources, Department of Natural Resources. All bearings, distances and coordinates are based on Louisiana Coordinate System of 1927, (North or South Zone), where applicable.

NOTE: The above description of the Tract nominated for lease has been provided and corrected, where required, exclusively by the nomination party. Any mineral lease selected from this Tract and awarded by the Louisiana State Mineral and Energy Board shall be without warranty of any kind, either express, implied, or statutory, including, but not limited to, the implied warranties of merchantability and fitness for a particular purpose. Should the mineral lease awarded by the Louisiana State Mineral and Energy Board be subsequently modified, cancelled or abrogated due to the existence of conflicting leases, operating agreements, private claims or other future obligations or conditions which may affect all or any portion of the leased Tract, it shall not relieve the Lessee of the obligation to pay any bonus due thereon to the Louisiana State Mineral and Energy Board, nor shall the Louisiana State Mineral and Energy Board be obligated to refund any consideration paid by the Lessor prior to such modification, cancellation, or abrogation, including, but not limited to, bonuses, rentals and royalties.

NOTE: The State of Louisiana does hereby reserve, and this lease shall be subject to, the imprescriptible right of surface use in the nature of a servitude in favor of the Department of Natural Resources, including its Offices and Commissions, for the sole purpose of implementing, constructing, servicing and maintaining approved coastal zone management and/or restoration projects. Utilization of any and all rights derived under this lease by the mineral lessee, its agents, successors or assigns, shall not interfere with nor hinder the reasonable surface use by the

Department of Natural Resources, its Offices or Commissions, as herein above reserved.

Applicant: CYPRESS ENERGY CORPORATION

Bidder	Cash Payment	Price/Acre	Rental	Oil	Gas	Other



Legend

13040052

IMAGERY.DOQQ\_2008\_1M\_CIR



TERREBONNE PARISH

LAKE BARRE

P.O.B.



**TRACT 43159 - Lafourche and Terrebonne Parishes, Louisiana**

All of the lands now or formerly constituting the beds and bottoms of all water bodies of every nature and description as to which title is vested in the State of Louisiana, together with all islands arising therein and other lands formed by accretion or by reliction, where allowed by law, excepting tax adjudicated lands, and not presently under mineral lease on April 10, 2013, situated in Lafourche and Terrebonne Parishes, Louisiana, and more particularly described as follows: Beginning at a point having Coordinates of X = 2,293,214.58 and Y = 217,418.93; thence North 89 degrees 26 minutes 14 seconds East 10,872.13 feet to a point having Coordinates of X = 2,304,086.18 and Y = 217,525.72; thence South 10,305.07 feet to a point having Coordinates of X = 2,304,086.18 and Y = 207,220.66; thence West 10,871.60 feet to a point having Coordinates of X = 2,293,214.58 and Y = 207,220.66; thence North 10,198.28 feet to the point of beginning, (This lease includes only waterbottoms claimed and owned by the state and specifically excludes any land which the state may claim or own and to which the mineral rights are vested in the state), containing approximately **2,259 acres**, all as more particularly outlined on a plat on file in the Office of Mineral Resources, Department of Natural Resources. All bearings, distances and coordinates are based on Louisiana Coordinate System of 1927, (North or South Zone), where applicable.

NOTE: The above description of the Tract nominated for lease has been provided and corrected, where required, exclusively by the nomination party. Any mineral lease selected from this Tract and awarded by the Louisiana State Mineral and Energy Board shall be without warranty of any kind, either express, implied, or statutory, including, but not limited to, the implied warranties of merchantability and fitness for a particular purpose. Should the mineral lease awarded by the Louisiana State Mineral and Energy Board be subsequently modified, cancelled or abrogated due to the existence of conflicting leases, operating agreements, private claims or other future obligations or conditions which may affect all or any portion of the leased Tract, it shall not relieve the Lessee of the obligation to pay any bonus due thereon to the Louisiana State Mineral and Energy Board, nor shall the Louisiana State Mineral and Energy Board be obligated to refund any consideration paid by the Lessor prior to such modification, cancellation, or abrogation, including, but not limited to, bonuses, rentals and royalties.

NOTE: The State of Louisiana does hereby reserve, and this lease shall be subject to, the imprescriptible right of surface use in the nature of a servitude in favor of the Department of Natural Resources, including its Offices and Commissions, for the sole purpose of implementing, constructing, servicing and maintaining approved coastal zone management and/or restoration projects. Utilization of any and all rights derived under this lease by the mineral lessee, its agents, successors or assigns, shall not interfere with nor hinder the reasonable surface use by the Department of Natural Resources, its Offices or Commissions, as herein above reserved.

Applicant: CYPRESS ENERGY CORPORATION

Bidder	Cash Payment	Price/Acre	Rental	Oil	Gas	Other

Legend

13040056

Counties

IMAGERY.DOQQ\_2008\_1M\_CIR

0 3,000 Feet



T21S - R20E

TERREBONNE PARISH

LAFOURCHE PARISH

P.O.B.

LAKE BARRE

LAKE RACCOURCI



**TRACT 43160 - Lafourche Parish, Louisiana**

All of the lands now or formerly constituting the beds and bottoms of all water bodies of every nature and description as to which title is vested in the State of Louisiana, together with all islands arising therein and other lands formed by accretion or by reliction, where allowed by law, excepting tax adjudicated lands, and not presently under mineral lease on April 10, 2013, situated in Lafourche Parish, Louisiana, and more particularly described as follows: Beginning at a point having Coordinates of X = 2,304,086.18 and Y = 217,525.72; thence East 5,450.55 feet to a point on the West boundary of State Lease No. 1450, as amended having Coordinates of X = 2,309,536.73 and Y = 217,525.72; thence along the boundaries of said State Lease No. 1450 the following courses: South 56 degrees 10 minutes 58 seconds East 2,114.51 feet to a point having Coordinates of X = 2,311,293.50 and Y = 216,348.90, South 24 degrees 50 minutes 18 seconds West 1,216.46 feet to a point having Coordinates of X = 2,310,782.51 and Y = 215,244.97 and North 82 degrees 33 minutes 22 seconds East 5,575.39 feet to the Northwest corner of State Lease No. 16564, as amended having Coordinates of X = 2,316,310.91 and Y = 215,967.30; thence along the boundaries of said State Lease No. 16564 the following courses: South 08 degrees 33 minutes 46 seconds East 69.04 feet to a point having Coordinates of X = 2,316,321.19 and Y = 215,899.03, South 19 degrees 14 minutes 49 seconds East 288.51 feet to a point having Coordinates of X = 2,316,416.30 and Y = 215,626.65, South 30 degrees 07 minutes 48 seconds East 466.30 feet to a point having Coordinates of X = 2,316,650.37 and Y = 215,223.35, South 42 degrees 34 minutes 34 seconds East 370.37 feet to a point having Coordinates of X = 2,316,900.95 and Y = 214,950.61, South 63 degrees 22 minutes 42 seconds East 263.31 feet to a point having Coordinates of X = 2,317,136.34 and Y = 214,832.63, South 83 degrees 04 minutes 18 seconds East 227.43 feet to a point having Coordinates of X = 2,317,362.11 and Y = 214,805.19, North 76 degrees 20 minutes 26 seconds East 232.08 feet to a point having Coordinates of X = 2,317,587.63 and Y = 214,860.00 and North 55 degrees 20 minutes 30 seconds East 118.90 feet to a point having Coordinates of X = 2,317,685.43 and Y = 214,927.61; thence South 00 degrees 29 minutes 41 seconds East 2,162.20 feet to the Northwest corner of a middle portion of State Lease No. 1451, as amended having Coordinates of X = 2,317,704.10 and Y = 212,765.49; thence continue South 00 degrees 29 minutes 41 seconds East 428.16 feet along the west boundary of said State Lease No. 1451 to its Southwest corner having Coordinates of X = 2,317,707.80 and Y = 212,337.34; thence South 00 degrees 29 minutes 42 seconds East 1,516.92 feet to the Northwest corner of the southern portion of State Lease No. 1451, as amended having Coordinates of X = 2,317,720.90 and Y = 210,820.48; thence South 00 degrees 29 minutes 42 seconds East 1,758.94 feet to its Southwest corner, the Northwest corner of State Lease No. 14589, as amended and the Northeast corner of the Eastern portion of State Lease No. 1480, as amended having Coordinates of X = 2,317,736.10 and Y = 209,061.61; thence South 89 degrees 30 minutes 18 seconds West 11,705.08 feet along the North boundary of said State Lease No. 1480 to its Northwest corner having Coordinates of X = 2,305,971.46 and Y = 208,959.96; thence West 1,885.28 feet to a point having Coordinates of X =

2,304,086.18 and Y = 208,959.96; thence North 8,565.77 feet to the point of beginning, containing approximately **2,326 acres**, all as more particularly outlined on a plat on file in the Office of Mineral Resources, Department of Natural Resources. All bearings, distances and coordinates are based on Louisiana Coordinate System of 1927, (North or South Zone), where applicable.

NOTE: The above description of the Tract nominated for lease has been provided and corrected, where required, exclusively by the nomination party. Any mineral lease selected from this Tract and awarded by the Louisiana State Mineral and Energy Board shall be without warranty of any kind, either express, implied, or statutory, including, but not limited to, the implied warranties of merchantability and fitness for a particular purpose. Should the mineral lease awarded by the Louisiana State Mineral and Energy Board be subsequently modified, cancelled or abrogated due to the existence of conflicting leases, operating agreements, private claims or other future obligations or conditions which may affect all or any portion of the leased Tract, it shall not relieve the Lessee of the obligation to pay any bonus due thereon to the Louisiana State Mineral and Energy Board, nor shall the Louisiana State Mineral and Energy Board be obligated to refund any consideration paid by the Lessor prior to such modification, cancellation, or abrogation, including, but not limited to, bonuses, rentals and royalties.

NOTE: The State of Louisiana does hereby reserve, and this lease shall be subject to, the imprescriptible right of surface use in the nature of a servitude in favor of the Department of Natural Resources, including its Offices and Commissions, for the sole purpose of implementing, constructing, servicing and maintaining approved coastal zone management and/or restoration projects. Utilization of any and all rights derived under this lease by the mineral lessee, its agents, successors or assigns, shall not interfere with nor hinder the reasonable surface use by the Department of Natural Resources, its Offices or Commissions, as herein above reserved.

Applicant: CYPRESS ENERGY CORPORATION

Bidder	Cash Payment	Price/Acre	Rental	Oil	Gas	Other

Legend

13040057

Active\_Leases

IMAGERY.DOQQ\_2008\_1M\_CIR

LAFOURCHE PARISH

T21S - R20E

SL 1450

SL 16564

SL 1451

SL 14589

SL 1480

LAKE RACCOURCI

0 3,000 Feet



P.O.B.

**TRACT 43161 - Terrebonne Parish, Louisiana**

All of the lands now or formerly constituting the beds and bottoms of all water bodies of every nature and description as to which title is vested in the State of Louisiana, together with all islands arising therein and other lands formed by accretion or by reliction, where allowed by law, excepting tax adjudicated lands, and not presently under mineral lease on April 10, 2013, situated in Terrebonne Parish, Louisiana, and more particularly described as follows: Beginning at a point having Coordinates of X = 2,274,485.75 and Y = 213,034.74; thence East 7,158.25 feet to a point having Coordinates of X = 2,281,644.00 and Y = 213,034.74; thence South 7,270.10 feet to a corner of State Lease No. 20946 having Coordinates of X = 2,281,644.00 and Y = 205,764.64; thence along the boundary of said State Lease No. 20946 the following courses and distances: North 60 degrees 01 minutes 31 seconds West 5,558.97 feet to a corner having Coordinates of X = 2,276,828.56 and Y = 208,542.00; West 432.97 feet to a corner having Coordinates of X = 2,276,395.59 and Y = 208,542.00; South 24 degrees 53 minutes 29 seconds West 2,125.44 feet to a corner having Coordinates of X = 2,275,501.00 and Y = 206,614.00 and South 34 degrees 01 minutes 36 seconds East 3,338.59 feet to its Southwest corner, also being a point on the Northern boundary of State Lease No. 199, as amended, having Coordinates of X = 2,277,369.21 and Y = 203,847.05; thence along the boundary of said State Lease No. 199 the following courses and distances: South 89 degrees 34 minutes 50 seconds West 2,121.97 feet to a corner having Coordinates of X = 2,275,247.30 and Y = 203,831.52; South 00 degrees 25 minutes 10 seconds East 466.50 feet to a corner having Coordinates of X = 2,275,250.72 and Y = 203,365.03; South 89 degrees 34 minutes 52 seconds West 742.49 feet to a corner having Coordinates of X = 2,274,508.25 and Y = 203,359.60 and North 00 degrees 25 minutes 10 seconds West 3,073.24 feet to a corner having Coordinates of X = 2,274,485.75 and Y = 206,432.75; thence North 6,601.99 feet to the point of beginning, containing approximately **1,088.45 acres**, all as more particularly outlined on a plat on file in the Office of Mineral Resources, Department of Natural Resources. All bearings, distances and coordinates are based on Louisiana Coordinate System of 1927, (North or South Zone), where applicable.

NOTE: The above description of the Tract nominated for lease has been provided and corrected, where required, exclusively by the nomination party. Any mineral lease selected from this Tract and awarded by the Louisiana State Mineral and Energy Board shall be without warranty of any kind, either express, implied, or statutory, including, but not limited to, the implied warranties of merchantability and fitness for a particular purpose. Should the mineral lease awarded by the Louisiana State Mineral and Energy Board be subsequently modified, cancelled or abrogated due to the existence of conflicting leases, operating agreements, private claims or other future obligations or conditions which may affect all or any portion of the leased Tract, it shall not relieve the Lessee of the obligation to pay any bonus due thereon to the Louisiana State Mineral and Energy Board, nor shall the Louisiana State Mineral and Energy Board be



obligated to refund any consideration paid by the Lessor prior to such modification, cancellation, or abrogation, including, but not limited to, bonuses, rentals and royalties.

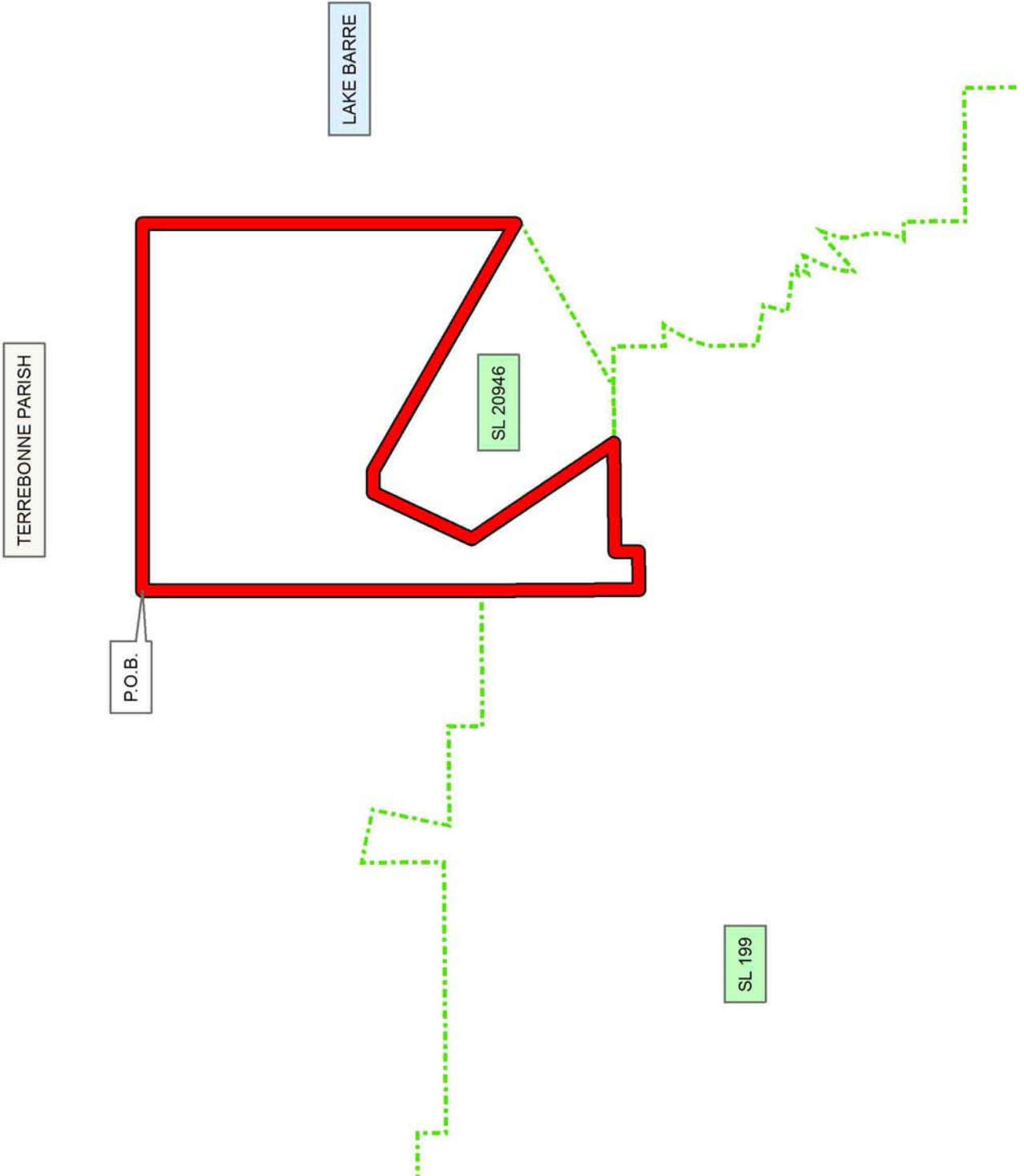
NOTE: The State of Louisiana does hereby reserve, and this lease shall be subject to, the imprescriptible right of surface use in the nature of a servitude in favor of the Department of Natural Resources, including its Offices and Commissions, for the sole purpose of implementing, constructing, servicing and maintaining approved coastal zone management and/or restoration projects. Utilization of any and all rights derived under this lease by the mineral lessee, its agents, successors or assigns, shall not interfere with nor hinder the reasonable surface use by the Department of Natural Resources, its Offices or Commissions, as herein above reserved.

Applicant: THEOPHILUS OIL, GAS & LAND SERVICES, LLC

Bidder	Cash Payment	Price/Acre	Rental	Oil	Gas	Other

**Legend**

- 13040019
- Active\_Leases



**TRACT 43162 - Terrebonne Parish, Louisiana**

All of the lands now or formerly constituting the beds and bottoms of all water bodies of every nature and description as to which title is vested in the State of Louisiana, together with all islands arising therein and other lands formed by accretion or by reliction, where allowed by law, excepting tax adjudicated lands, and not presently under mineral lease on April 10, 2013, situated in Terrebonne Parish, Louisiana, and more particularly described as follows: Beginning at a point having Coordinates of X = 2,281,644.00 and Y = 213,034.74; thence East 11,570.58 feet to a point having Coordinates of X = 2,293,214.58 and Y = 213,034.74; thence South 5,814.09 feet to a point having Coordinates of X = 2,293,214.58 and Y = 207,220.66; thence West 11,570.58 feet to a point having Coordinates of X = 2,281,644.00 and Y = 207,220.66; thence North 5,814.09 feet to the point of beginning, **LESS AND EXCEPT** any right, title, and interest in lands owned by and not under lease from the State of Louisiana, on behalf of the Terrebonne Parish School Board, situated in Section 16, Township 21 South, Range 20 East, Terrebonne Parish, Louisiana, contained within the above described tract, containing approximately **1,544.36 acres**, all as more particularly outlined on a plat on file in the Office of Mineral Resources, Department of Natural Resources. All bearings, distances and coordinates are based on Louisiana Coordinate System of 1927, (North or South Zone), where applicable.

NOTE: The above description of the Tract nominated for lease has been provided and corrected, where required, exclusively by the nomination party. Any mineral lease selected from this Tract and awarded by the Louisiana State Mineral and Energy Board shall be without warranty of any kind, either express, implied, or statutory, including, but not limited to, the implied warranties of merchantability and fitness for a particular purpose. Should the mineral lease awarded by the Louisiana State Mineral and Energy Board be subsequently modified, cancelled or abrogated due to the existence of conflicting leases, operating agreements, private claims or other future obligations or conditions which may affect all or any portion of the leased Tract, it shall not relieve the Lessee of the obligation to pay any bonus due thereon to the Louisiana State Mineral and Energy Board, nor shall the Louisiana State Mineral and Energy Board be obligated to refund any consideration paid by the Lessor prior to such modification, cancellation, or abrogation, including, but not limited to, bonuses, rentals and royalties.

NOTE: The State of Louisiana does hereby reserve, and this lease shall be subject to, the imprescriptible right of surface use in the nature of a servitude in favor of the Department of Natural Resources, including its Offices and Commissions, for the sole purpose of implementing, constructing, servicing and maintaining approved coastal zone management and/or restoration projects. Utilization of any and all rights derived under this lease by the mineral lessee, its agents, successors or assigns, shall not interfere with nor hinder the reasonable surface use by the

Department of Natural Resources, its Offices or Commissions, as herein above reserved.

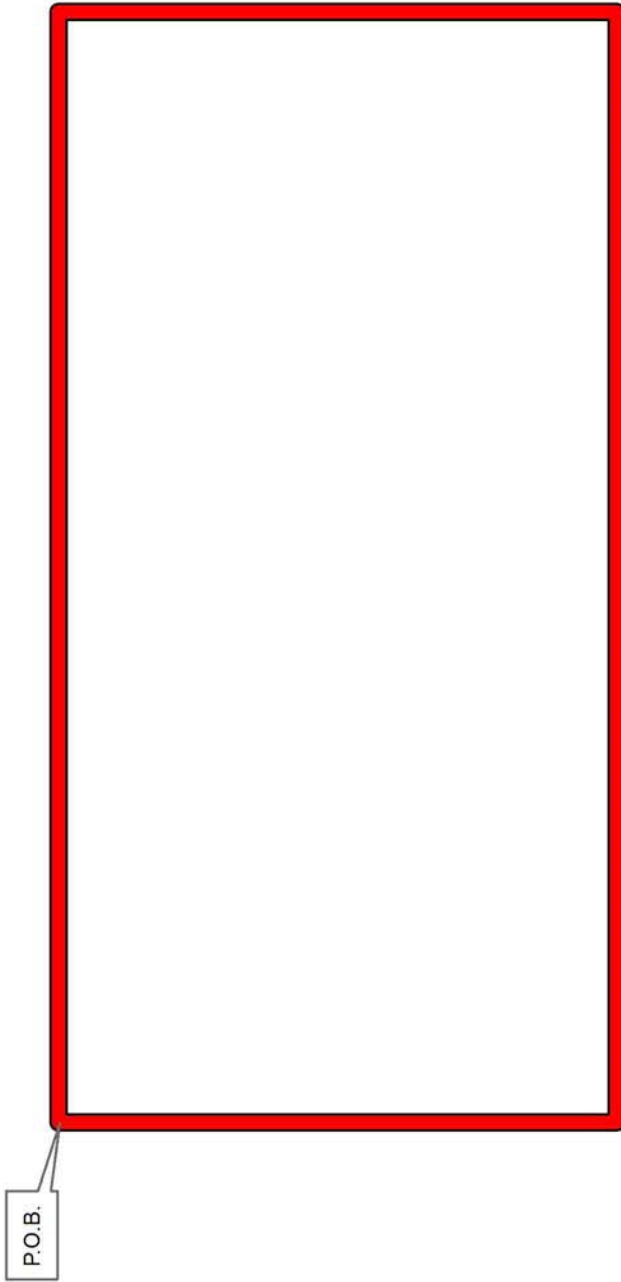
Applicant: CYPRESS ENERGY CORPORATION

Bidder	Cash Payment	Price/Acre	Rental	Oil	Gas	Other



TERREBONNE PARISH

LAKE BARRE



**TRACT 43163 - Terrebonne Parish, Louisiana**

All of the lands now or formerly constituting the beds and bottoms of all water bodies of every nature and description as to which title is vested in the State of Louisiana, together with all islands arising therein and other lands formed by accretion or by reliction, where allowed by law, excepting tax adjudicated lands, and not presently under mineral lease on April 10, 2013, situated in Terrebonne Parish, Louisiana, and more particularly described as follows: Beginning at a point having Coordinates of X = 2,269,185.68 and Y = 213,034.74; thence East 5,300.08 feet to a point having Coordinates of X = 2,274,485.75 and Y = 213,034.74; thence South 6,601.99 feet to a corner of State Lease No. 199, as amended, having Coordinates of X = 2,274,485.75 and Y = 206,432.75; thence along the boundary of said State Lease No. 199 the following courses and distances: South 89 degrees 34 minutes 50 seconds West 2,634.46 feet to a corner having Coordinates of X = 2,271,851.36 and Y = 206,413.47; North 00 degrees 25 minutes 11 seconds West 660.00 feet to a corner having Coordinates of X = 2,271,846.53 and Y = 207,073.45; South 89 degrees 34 minutes 50 seconds West 1,942.29 feet to a corner having Coordinates of X = 2,269,904.29 and Y = 207,059.23; North 11 degrees 51 minutes 43 seconds East 1,524.59 feet to a corner having Coordinates of X = 2,270,217.67 and Y = 208,551.26 and North 78 degrees 08 minutes 17 seconds West 1,051.61 feet to a corner having Coordinates of X = 2,269,188.52 and Y = 208,767.42; thence North 00 degrees 02 minutes 18 seconds West 4,267.32 feet to the point of beginning, containing approximately **732.56 acres**, all as more particularly outlined on a plat on file in the Office of Mineral Resources, Department of Natural Resources. All bearings, distances and coordinates are based on Louisiana Coordinate System of 1927, (North or South Zone), where applicable.

NOTE: The above description of the Tract nominated for lease has been provided and corrected, where required, exclusively by the nomination party. Any mineral lease selected from this Tract and awarded by the Louisiana State Mineral and Energy Board shall be without warranty of any kind, either express, implied, or statutory, including, but not limited to, the implied warranties of merchantability and fitness for a particular purpose. Should the mineral lease awarded by the Louisiana State Mineral and Energy Board be subsequently modified, cancelled or abrogated due to the existence of conflicting leases, operating agreements, private claims or other future obligations or conditions which may affect all or any portion of the leased Tract, it shall not relieve the Lessee of the obligation to pay any bonus due thereon to the Louisiana State Mineral and Energy Board, nor shall the Louisiana State Mineral and Energy Board be obligated to refund any consideration paid by the Lessor prior to such modification, cancellation, or abrogation, including, but not limited to, bonuses, rentals and royalties.

NOTE: The State of Louisiana does hereby reserve, and this lease shall be subject to, the imprescriptible right of surface use in the nature of a servitude in favor of the Department of Natural Resources, including its

Offices and Commissions, for the sole purpose of implementing, constructing, servicing and maintaining approved coastal zone management and/or restoration projects. Utilization of any and all rights derived under this lease by the mineral lessee, its agents, successors or assigns, shall not interfere with nor hinder the reasonable surface use by the Department of Natural Resources, its Offices or Commissions, as herein above reserved.

Applicant: THEOPHILUS OIL, GAS & LAND SERVICES, LLC

Bidder	Cash Payment	Price/Acre	Rental	Oil	Gas	Other

**Legend**  
13040018  
Active\_Leases

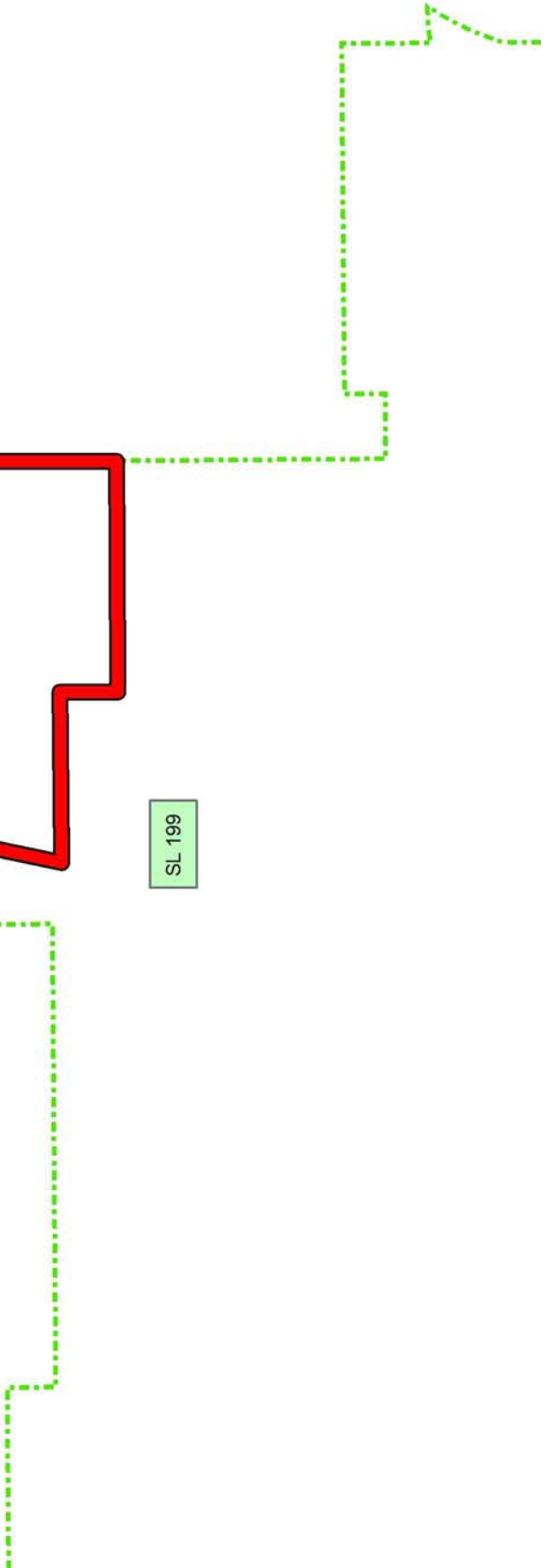
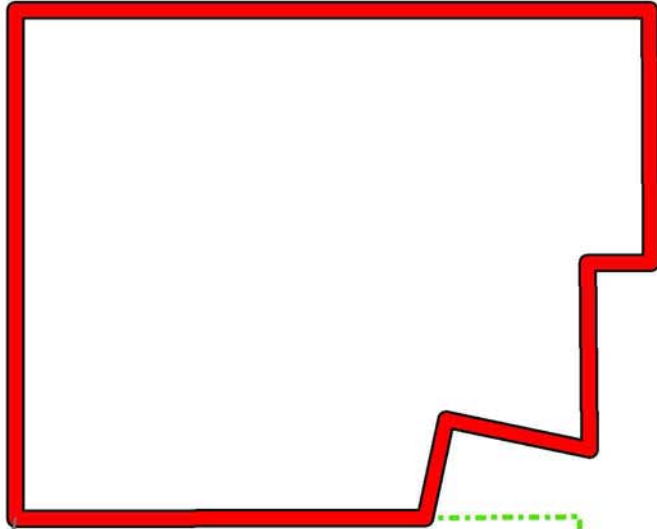


TERREBONNE PARISH

LAKE BARRE

P.O.B.

SL 199





**TRACT 43164 - Terrebonne Parish, Louisiana**

All of the lands now or formerly constituting the beds and bottoms of all water bodies of every nature and description as to which title is vested in the State of Louisiana, together with all islands arising therein and other lands formed by accretion or by reliction, where allowed by law, excepting tax adjudicated lands, and not presently under mineral lease on April 10, 2013, situated in Terrebonne Parish, Louisiana, and more particularly described as follows: Beginning at a point having Coordinates of X = 2,263,916.34 and Y = 212,143.00; thence East 5,269.93 feet to a point having Coordinates of X = 2,269,186.27 and Y = 212,143.00; thence South 00 degrees 02 minutes 18 seconds East 3,375.58 feet to a corner of State Lease No. 199, as amended, having Coordinates of X = 2,269,188.52 and Y = 208,767.42; thence along the boundary of said State Lease No. 199 the following courses and distances: South 00 degrees 25 minutes 10 seconds East 1,603.02 feet to a corner having Coordinates of X = 2,269,200.25 and Y = 207,164.44; South 89 degrees 34 minutes 50 seconds West 5,280.00 feet to a corner having Coordinates of X = 2,263,920.40 and Y = 207,125.79 and North 00 degrees 25 minutes 10 seconds West 553.44 feet to a corner having Coordinates of X = 2,263,916.34 and Y = 207,679.21; thence North 4,463.79 feet to the point of beginning, containing approximately **605.02 acres**, all as more particularly outlined on a plat on file in the Office of Mineral Resources, Department of Natural Resources. All bearings, distances and coordinates are based on Louisiana Coordinate System of 1927, (North or South Zone), where applicable.

NOTE: The above description of the Tract nominated for lease has been provided and corrected, where required, exclusively by the nomination party. Any mineral lease selected from this Tract and awarded by the Louisiana State Mineral and Energy Board shall be without warranty of any kind, either express, implied, or statutory, including, but not limited to, the implied warranties of merchantability and fitness for a particular purpose. Should the mineral lease awarded by the Louisiana State Mineral and Energy Board be subsequently modified, cancelled or abrogated due to the existence of conflicting leases, operating agreements, private claims or other future obligations or conditions which may affect all or any portion of the leased Tract, it shall not relieve the Lessee of the obligation to pay any bonus due thereon to the Louisiana State Mineral and Energy Board, nor shall the Louisiana State Mineral and Energy Board be obligated to refund any consideration paid by the Lessor prior to such modification, cancellation, or abrogation, including, but not limited to, bonuses, rentals and royalties.

NOTE: The State of Louisiana does hereby reserve, and this lease shall be subject to, the imprescriptible right of surface use in the nature of a servitude in favor of the Department of Natural Resources, including its Offices and Commissions, for the sole purpose of implementing, constructing, servicing and maintaining approved coastal zone management and/or restoration projects. Utilization of any and all rights derived under this lease by the mineral lessee, its agents, successors or assigns,

shall not interfere with nor hinder the reasonable surface use by the Department of Natural Resources, its Offices or Commissions, as herein above reserved.

Applicant: THEOPHILUS OIL, GAS & LAND SERVICES, LLC

Bidder	Cash Payment	Price/Acre	Rental	Oil	Gas	Other

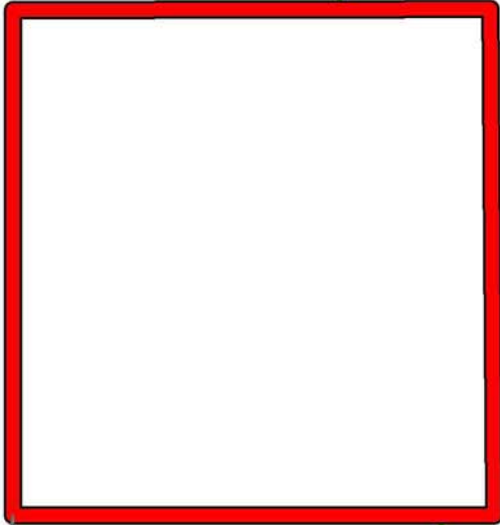
**Legend**  
13040017  
Active\_Leases



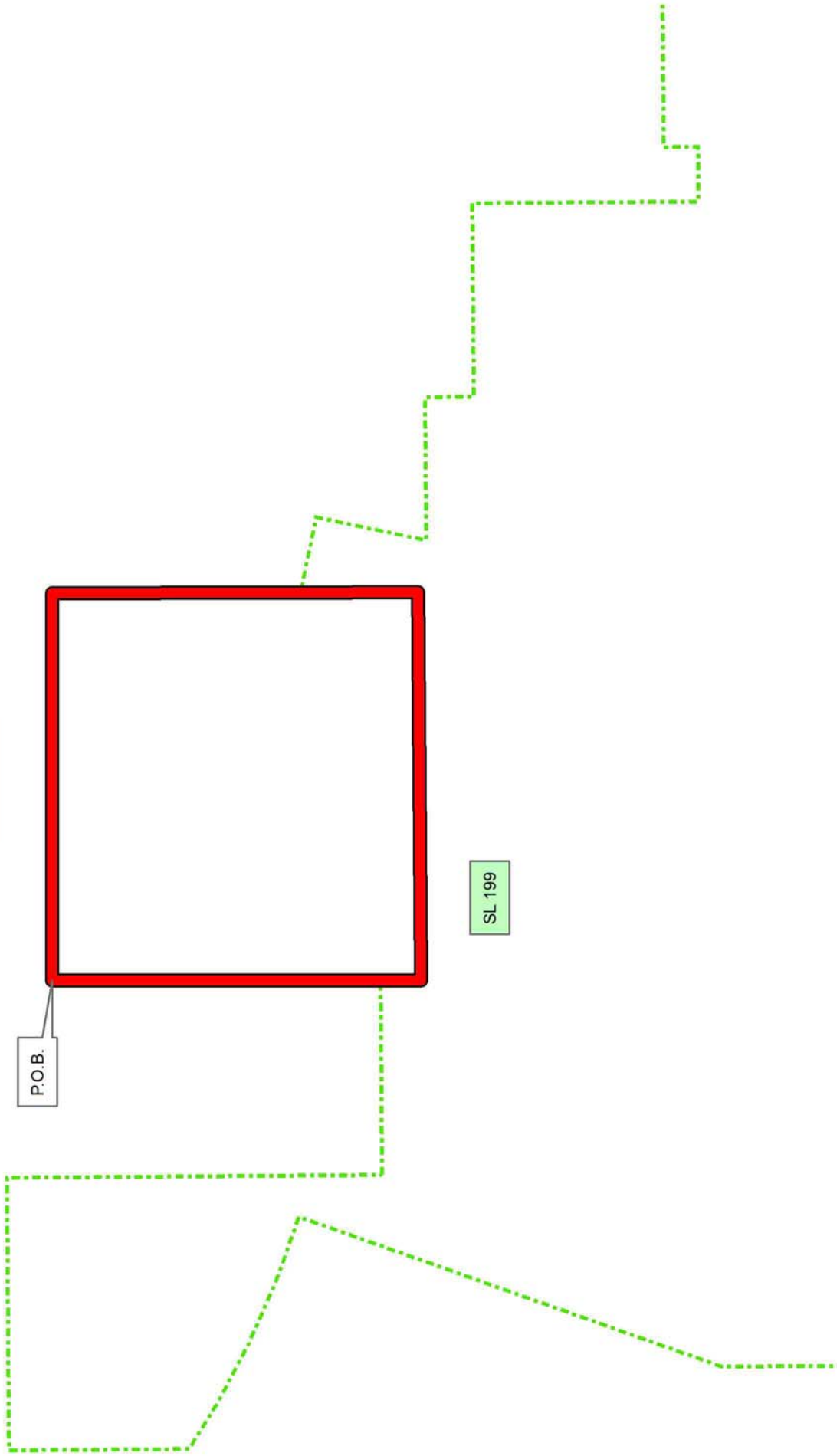
TERREBONNE PARISH

LAKE BARRE

P.O.B.



SL 199



**TRACT 43165 - Lafourche Parish, Louisiana**

All of the lands now or formerly constituting the beds and bottoms of all water bodies of every nature and description as to which title is vested in the State of Louisiana, together with all islands arising therein and other lands formed by accretion or by reliction, where allowed by law, excepting tax adjudicated lands, and not presently under mineral lease on April 10, 2013, situated in Lafourche Parish, Louisiana, and more particularly described as follows: Beginning at a point having Coordinates of X = 2,323,048.95 and Y = 210,362.80; thence East 13,447.00 feet to the Northwest corner of State Lease No. 20783 having Coordinates of X = 2,336,495.95 and Y = 210,362.80; thence South 02 degrees 14 minutes 08 seconds East 6,334.63 feet along the west boundary of said State Lease No. 20783 to its Southwest corner having Coordinates of X = 2,336,743.05 and Y = 204,032.99; thence West 12,418.78 feet to a point on the East boundary of State Lease No. 14589 having Coordinates of X = 2,324,324.27 and Y = 204,032.99; thence along the boundaries of said State Lease No. 14589 the following courses: North 5,062.75 feet to a point having Coordinates of X = 2,324,324.26 and Y = 209,095.74 and West 1,275.33 feet to a point having Coordinates of X = 2,323,048.95 and Y = 209,095.74; thence North 1,267.06 feet to the point of beginning, (This lease includes only waterbottoms claimed and owned by the state and specifically excludes any land which the state may claim or own and to which the mineral rights are vested in the state), containing approximately **1,558 acres**, all as more particularly outlined on a plat on file in the Office of Mineral Resources, Department of Natural Resources. All bearings, distances and coordinates are based on Louisiana Coordinate System of 1927, (North or South Zone), where applicable.

NOTE: The above description of the Tract nominated for lease has been provided and corrected, where required, exclusively by the nomination party. Any mineral lease selected from this Tract and awarded by the Louisiana State Mineral and Energy Board shall be without warranty of any kind, either express, implied, or statutory, including, but not limited to, the implied warranties of merchantability and fitness for a particular purpose. Should the mineral lease awarded by the Louisiana State Mineral and Energy Board be subsequently modified, cancelled or abrogated due to the existence of conflicting leases, operating agreements, private claims or other future obligations or conditions which may affect all or any portion of the leased Tract, it shall not relieve the Lessee of the obligation to pay any bonus due thereon to the Louisiana State Mineral and Energy Board, nor shall the Louisiana State Mineral and Energy Board be obligated to refund any consideration paid by the Lessor prior to such modification, cancellation, or abrogation, including, but not limited to, bonuses, rentals and royalties.

NOTE: The State of Louisiana does hereby reserve, and this lease shall be subject to, the imprescriptible right of surface use in the nature of a servitude in favor of the Department of Natural Resources, including its Offices and Commissions, for the sole purpose of implementing,

constructing, servicing and maintaining approved coastal zone management and/or restoration projects. Utilization of any and all rights derived under this lease by the mineral lessee, its agents, successors or assigns, shall not interfere with nor hinder the reasonable surface use by the Department of Natural Resources, its Offices or Commissions, as herein above reserved.

Applicant: CYPRESS ENERGY CORPORATION

Bidder	Cash Payment	Price/Acre	Rental	Oil	Gas	Other

Legend  
13040061  
Active\_Leases  
IMAGERY.DOQQ\_2008\_1M\_CIR

LITTLE LAKE

SL 20783

LAFOURCHE PARISH

LAKE RACCOURCI

TIMBALIER BAY

0 2,000 Feet

P.O.B.

SL 14589