

TRACT 43166 - Portion of Blocks 8, and 9, Grand Isle Area, Plaquemines Parish, Louisiana

All of the lands now or formerly constituting the beds and bottoms of all water bodies of every nature and description as to which title is vested in the State of Louisiana, together with all islands arising therein and other lands formed by accretion or by reliction, where allowed by law, excepting tax adjudicated lands, and not presently under mineral lease on April 10, 2013, situated in Plaquemines Parish, Louisiana, and more particularly described as follows: Beginning at a point on the East Line of Block 8, Grand Isle Area having Coordinates of X = 2,472,417.93 and Y = 206,900.00; thence South 5,101.28 feet along the East Line of said Block 8 to a point on the Louisiana Coastline, as decreed by the Supreme Court of the United States, as determined by a Special Master appointed therein, in litigation styled *United States v. State of Louisiana et al No. 9 Original*, in 1975, having Coordinates of X = 2,472,417.93 and Y = 201,798.72; thence Southwesterly, on a straight line, along said Louisiana Coastline to a point being on the Northern boundary of State Lease No. 797, as amended having Coordinates of X = 2,464,242.83 and Y = 200,293.43; thence along the boundary of said State Lease No. 797 the following: West 830.60 feet to a point having Coordinates of X = 2,463,412.23 and Y = 200,293.43, and South 152.94 feet to a point on said Louisiana Coastline having Coordinates of X = 2,463,412.23 and Y = 200,140.49; thence Southwesterly, on a straight line, along said Louisiana Coastline to a point having Coordinates of X = 2,457,659.89 and Y = 199,081.30, said point also being on the Western boundary of Block 9, Grand Isle Area; thence North 1,212.13 feet along the West Line of said Block 9 to a point being the Southwest corner of said Block 8, having Coordinates of X = 2,457,659.89 and Y = 200,293.43; thence North 6,606.57 feet along the Western boundary of said Block 8 to a point having Coordinates of X = 2,457,659.89 and Y = 206,900.00; thence East 14,758.04 to the point of beginning, containing approximately **2,187.17 acres**, all as more particularly outlined on a plat on file in the Office of Mineral Resources, Department of Natural Resources. All bearings, distances and coordinates are based on Louisiana Coordinate System of 1927, (North or South Zone), where applicable.

NOTE: The above description of the Tract nominated for lease has been provided and corrected, where required, exclusively by the nomination party. Any mineral lease selected from this Tract and awarded by the Louisiana State Mineral and Energy Board shall be without warranty of any kind, either express, implied, or statutory, including, but not limited to, the implied warranties of merchantability and fitness for a particular purpose. Should the mineral lease awarded by the Louisiana State Mineral and Energy Board be subsequently modified, cancelled or abrogated due to the existence of conflicting leases, operating agreements, private claims or other future obligations or conditions which may affect all or any portion of the leased Tract, it shall not relieve the Lessee of the obligation to pay any bonus due thereon to the Louisiana State Mineral and Energy Board, nor shall the Louisiana State Mineral and Energy Board be obligated to refund any consideration paid by the Lessor prior to such

modification, cancellation, or abrogation, including, but not limited to, bonuses, rentals and royalties.

NOTE: The State of Louisiana does hereby reserve, and this lease shall be subject to, the imprescriptible right of surface use in the nature of a servitude in favor of the Department of Natural Resources, including its Offices and Commissions, for the sole purpose of implementing, constructing, servicing and maintaining approved coastal zone management and/or restoration projects. Utilization of any and all rights derived under this lease by the mineral lessee, its agents, successors or assigns, shall not interfere with nor hinder the reasonable surface use by the Department of Natural Resources, its Offices or Commissions, as herein above reserved.

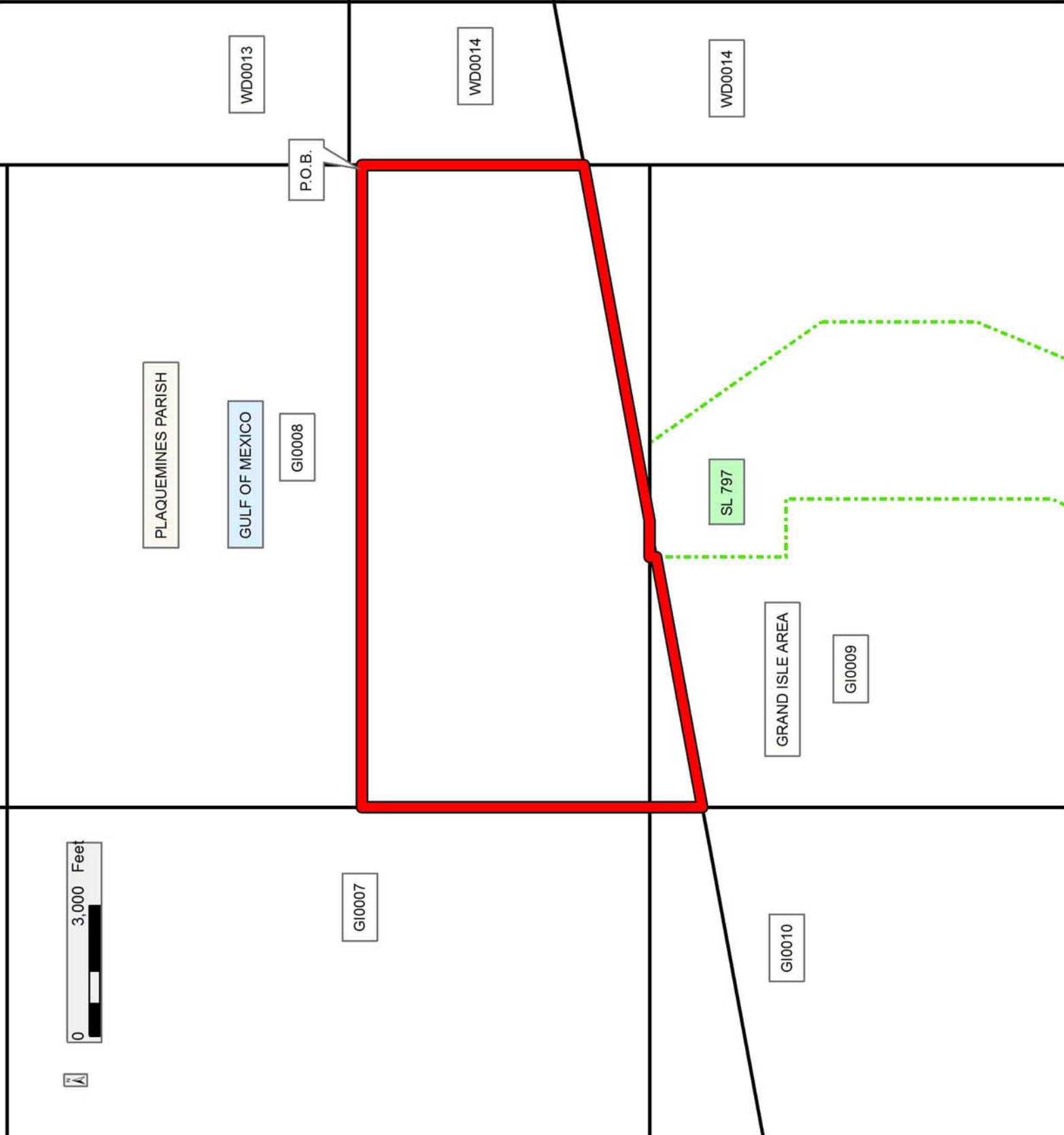
NOTE: It appears, according to our records, that a portion of this Tract is located within the restrictive safety fairway area as set out by the Corps of Engineers, U.S. Army and/or the restrictive anchorage area as set out by the U.S. Coast Guard.

Applicant: PUMKIN ISLAND INVESTMENT CO.

Bidder	Cash Payment	Price/Acre	Rental	Oil	Gas	Other

Legend

- 13040011
- Blocks
- Active Leases



TRACT 43167 - Lafourche and Terrebonne Parishes, Louisiana

All of the lands now or formerly constituting the beds and bottoms of all water bodies of every nature and description as to which title is vested in the State of Louisiana, together with all islands arising therein and other lands formed by accretion or by reliction, where allowed by law, excepting tax adjudicated lands, and not presently under mineral lease on April 10, 2013, situated in Lafourche and Terrebonne Parishes, Louisiana, and more particularly described as follows: Beginning at a point on the East boundary of State Lease No. 20892 having Coordinates of X = 2,299,700.00 and Y = 203,050.00; thence along the boundaries of said State Lease No. 20892 the following courses: North 55 degrees 04 minutes 50 seconds West 6,466.56 feet to a point having Coordinates of X = 2,294,397.69 and Y = 206,751.61 and South 79 degrees 11 minutes 51 seconds West 45.35 feet to its Northwest corner and the Northeast corner of State Lease No. 20893 having Coordinates of X = 2,294,353.15 and y = 206,743.11; thence continue South 79 degrees 11 minutes 51 seconds West 1,159.12 feet along the North boundary of said State Lease No. 20893 to a point having Coordinates of X = 2,293,214.58 and Y = 206,525.87; thence North 694.79 feet to a point having Coordinates of X = 2,293,214.58 and Y = 207,220.66; thence East 10,871.60 feet to a point having Coordinates of X = 2,304,086.18 and Y = 207,220.66; thence North 1,739.30 feet to a point having Coordinates of X = 2,304,086.18 and Y = 208,959.96; thence East 1,885.28 feet to the Northwest corner of the north portion of State Lease No. 1480, as amended having Coordinates of X = 2,305,971.46 and Y = 208,959.96; thence South 01 degrees 00 minutes 00 seconds East 7,186.60 feet along the West boundary of said State Lease No. 1480 to its Southwest corner having Coordinates of X = 2,306,096.88 and Y = 201,774.45; thence South 475.09 feet to a point having Coordinates of X = 2,306,096.88 and Y = 201,299.36; thence West 5,626.88 feet to the Northeast corner of State Lease No. 20897 having Coordinates of X = 2,300,470.00 and Y = 201,299.36; thence South 89 degrees 59 minutes 57 seconds West 770.00 feet along the North boundary of said State Lease No. 20897 to the Southeast corner of said State Lease No. 20892 having Coordinates of X = 2,299,700.00 and Y = 201,299.35; thence North 1,750.65 feet along the East boundary of said State Lease No. 20892 to the point of beginning, (This lease includes only waterbottoms claimed and owned by the state and specifically excludes any land which the state may claim or own and to which the mineral rights are vested in the state), containing approximately **1,232 acres**, all as more particularly outlined on a plat on file in the Office of Mineral Resources, Department of Natural Resources. All bearings, distances and coordinates are based on Louisiana Coordinate System of 1927, (North or South Zone), where applicable.

NOTE: The above description of the Tract nominated for lease has been provided and corrected, where required, exclusively by the nomination party. Any mineral lease selected from this Tract and awarded by the Louisiana State Mineral and Energy Board shall be without warranty of any kind, either express, implied, or statutory, including, but not limited to, the implied warranties of merchantability and fitness for a particular

purpose. Should the mineral lease awarded by the Louisiana State Mineral and Energy Board be subsequently modified, cancelled or abrogated due to the existence of conflicting leases, operating agreements, private claims or other future obligations or conditions which may affect all or any portion of the leased Tract, it shall not relieve the Lessee of the obligation to pay any bonus due thereon to the Louisiana State Mineral and Energy Board, nor shall the Louisiana State Mineral and Energy Board be obligated to refund any consideration paid by the Lessor prior to such modification, cancellation, or abrogation, including, but not limited to, bonuses, rentals and royalties.

NOTE: The State of Louisiana does hereby reserve, and this lease shall be subject to, the imprescriptible right of surface use in the nature of a servitude in favor of the Department of Natural Resources, including its Offices and Commissions, for the sole purpose of implementing, constructing, servicing and maintaining approved coastal zone management and/or restoration projects. Utilization of any and all rights derived under this lease by the mineral lessee, its agents, successors or assigns, shall not interfere with nor hinder the reasonable surface use by the Department of Natural Resources, its Offices or Commissions, as herein above reserved.

Applicant: CYPRESS ENERGY CORPORATION

Bidder	Cash Payment	Price/Acre	Rental	Oil	Gas	Other

Legend

13040060

Active_Leases

Counties

IMAGERY.DOQQ_2008_1M_CIR

0 3,000 Feet



LAFOURCHE PARISH

LAKE RACCOURCI

TERREBONNE PARISH

SL 1480

SL 20892

SL 20893

P.O.B.

SL 3278

SL 20897

TRACT 43168 - Terrebonne Parish, Louisiana

All of the lands now or formerly constituting the beds and bottoms of all water bodies of every nature and description as to which title is vested in the State of Louisiana, together with all islands arising therein and other lands formed by accretion or by reliction, where allowed by law, excepting tax adjudicated lands, and not presently under mineral lease on April 10, 2013, situated in Terrebonne Parish, Louisiana, and more particularly described as follows: Beginning at a point having Coordinates of X = 2,286,180.00 and Y = 207,220.66; thence East 7,034.58 feet to a point having Coordinates of X = 2,293,214.58 and Y = 207,220.66; thence South 694.79 feet to a point on the North boundary of State Lease No. 20893 having Coordinates of X = 2,293,214.58 and Y = 206,525.87; thence along the boundaries of said State Lease No. 20893 the following courses: South 79 degrees 11 minutes 51 seconds West 2,590.48 feet to a point having Coordinates of X = 2,290,670.00 and Y = 206,040.34, South 2,410.34 feet to a point having Coordinates of X = 2,290,670.00 and Y = 203,630.00 and South 40 degrees 49 minutes 57 seconds East 3,085.22 feet to its Southwest corner and the Northwest corner of State Lease No. 20894 having Coordinates of X = 2,292,687.27 and Y = 201,295.65; thence along the boundaries of said State Lease No. 20894 the following courses: South 40 degrees 49 minutes 57 seconds East 500.00 feet to a point having Coordinates of X = 2,293,014.20 and Y = 200,917.34 and South 40 degrees 49 minutes 54 seconds East 1,581.13 feet to its Southwest corner and a point on the North boundary of State Lease No. 20896 having Coordinates of X = 2,294,048.00 and Y = 199,721.00; thence along the boundaries of said State Lease No. 20896 the following courses: South 79 degrees 20 minutes 19 seconds West 4,210.69 feet to a point having Coordinates of X = 2,289,910.00 and Y = 198,942.00 and West 3,730.00 feet to its Northwest corner having Coordinates of X = 2,286,180.00 and Y = 198,942.00; thence North 8,278.66 feet to the point of beginning, containing approximately **1,080 acres**, all as more particularly outlined on a plat on file in the Office of Mineral Resources, Department of Natural Resources. All bearings, distances and coordinates are based on Louisiana Coordinate System of 1927, (North or South Zone), where applicable.

NOTE: The above description of the Tract nominated for lease has been provided and corrected, where required, exclusively by the nomination party. Any mineral lease selected from this Tract and awarded by the Louisiana State Mineral and Energy Board shall be without warranty of any kind, either express, implied, or statutory, including, but not limited to, the implied warranties of merchantability and fitness for a particular purpose. Should the mineral lease awarded by the Louisiana State Mineral and Energy Board be subsequently modified, cancelled or abrogated due to the existence of conflicting leases, operating agreements, private claims or other future obligations or conditions which may affect all or any portion of the leased Tract, it shall not relieve the Lessee of the obligation to pay any bonus due thereon to the Louisiana State Mineral and Energy Board, nor shall the Louisiana State Mineral and Energy Board be obligated to refund any consideration paid by the Lessor prior to such

modification, cancellation, or abrogation, including, but not limited to, bonuses, rentals and royalties.

NOTE: The State of Louisiana does hereby reserve, and this lease shall be subject to, the imprescriptible right of surface use in the nature of a servitude in favor of the Department of Natural Resources, including its Offices and Commissions, for the sole purpose of implementing, constructing, servicing and maintaining approved coastal zone management and/or restoration projects. Utilization of any and all rights derived under this lease by the mineral lessee, its agents, successors or assigns, shall not interfere with nor hinder the reasonable surface use by the Department of Natural Resources, its Offices or Commissions, as herein above reserved.

Applicant: CYPRESS ENERGY CORPORATION

Bidder	Cash Payment	Price/Acre	Rental	Oil	Gas	Other

13040059

Active_Leases

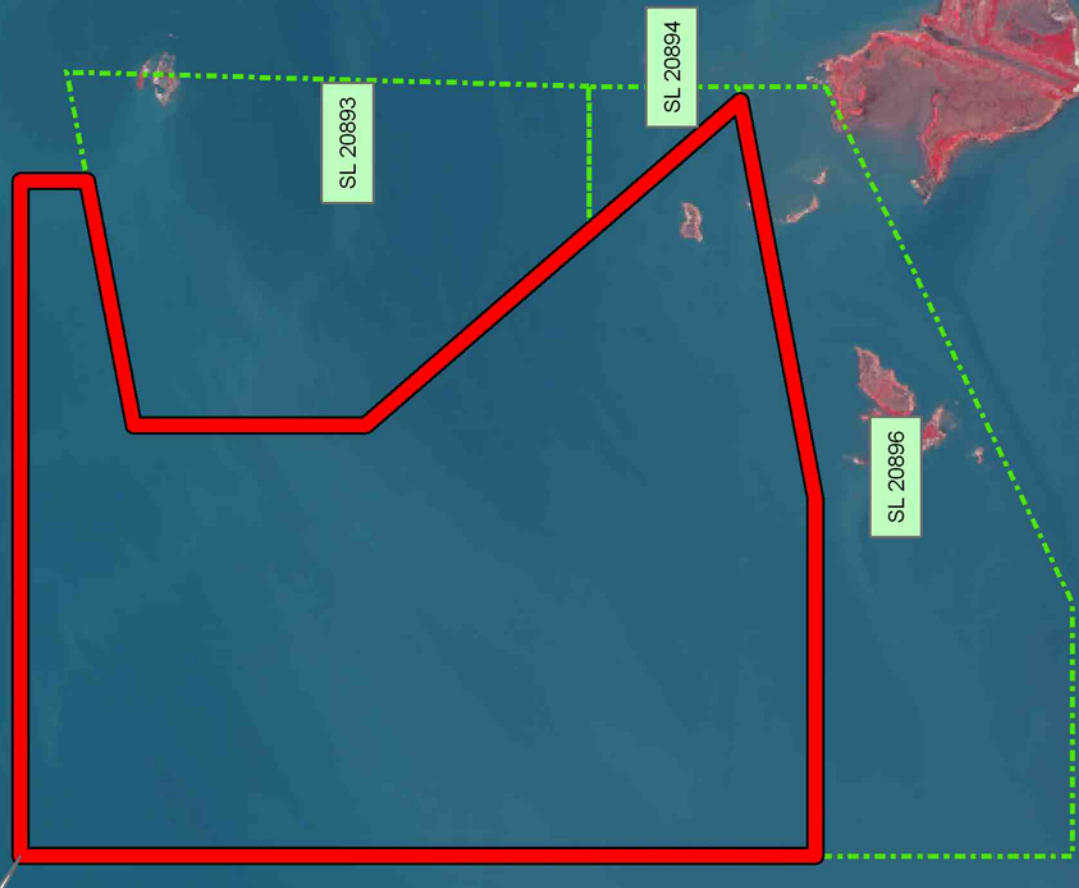
IMAGERY.DOQQ_2008_1M_CIF



TERREBONNE PARISH

LAKE BARRE

P.O.B.



TRACT 43169 - Lafourche Parish, Louisiana

All of the lands now or formerly constituting the beds and bottoms of all water bodies of every nature and description as to which title is vested in the State of Louisiana, together with all islands arising therein and other lands formed by accretion or by reliction, where allowed by law, excepting tax adjudicated lands, and not presently under mineral lease on April 10, 2013, situated in Lafourche Parish, Louisiana, and more particularly described as follows: Beginning at the Southwest corner of the North portion of the State Lease No. 1480, as amended having Coordinates of X = 2,306,096.88 and Y = 201,774.45; thence, along the Southerly boundary the North portion of said State Lease No. 1480 the following courses and distances: North 88 degrees 50 minutes 07 seconds East 3,735.38 feet, North 05 degrees 13 minutes 26 seconds West 851.15 feet, North 89 degrees 38 minutes 36 seconds East 2,501.08 feet, North 60 degrees 21 minutes 42 seconds East 316.37 feet, North 56 degrees 35 minutes 32 seconds East 563.00 feet, North 53 degrees 31 minutes 51 seconds East 286.00 feet, North 50 degrees 47 minutes 34 seconds East 980.80 feet, North 52 degrees 52 minutes 09 seconds East 878.00 feet, North 56 degrees 33 minutes 36 seconds East 635.10 feet, North 59 degrees 18 minutes 01 seconds East 744.30 feet, North 57 degrees 30 minutes 24 seconds East 1,991.80 feet, North 63 degrees 26 minutes 06 seconds East 219.34 feet to a point being on the Western boundary of State Lease No. 14589, as amended; thence along the Western boundary of said State Lease No. 14589 the following courses and distances: North 63 degrees 26 minutes 06 seconds East 853.97 feet, North 65 degrees 49 minutes 15 seconds East 537.10 feet, South 34 degrees 01 minutes 10 seconds West 482.60 feet, South 28 degrees 36 minutes 38 seconds West 626.50 feet, South 27 degrees 48 minutes 59 seconds West 1,465.34 feet to a point being the Northernmost corner of the East portion of said State Lease No. 1480, thence along the boundaries of the East portion of said State Lease No. 1480 the following courses and distances: South 27 degrees 48 minutes 59 seconds West 377.66 feet, South 33 degrees 23 minutes 19 seconds West 527.00 feet, South 41 degrees 59 minutes 14 seconds West 403.60 feet, South 43 degrees 13 minutes 43 seconds West 686.20 feet, South 48 degrees 21 minutes 59 seconds West 722.50 feet, South 52 degrees 47 minutes 01 seconds West 992.00 feet, South 57 degrees 07 minutes 26 seconds West 976.40 feet, South 58 degrees 02 minutes 09 seconds West 516.60 feet, South 60 degrees 12 minutes 18 seconds West 289.10 feet, South 61 degrees 00 minutes 04 seconds West 152.35 feet, South 03 degrees 41 minutes 29 seconds East 454.47 feet, South 00 degrees 29 minutes 42 seconds East 2,283.26 feet, North 63 degrees 17 minutes 36 seconds East 2,167.69 feet, South 1,172.45 feet, and East 2,193.23 feet to a point on the Western boundary of said State Lease No. 14589 having Coordinates of X = 2,317,736.10 and Y = 198,143.96; thence South 2,082.84 feet along the Western boundary of said State Lease No. 14589 to its Southwest corner having Coordinates of X = 2,317,736.10 and Y = 196,061.12; thence South 89 degrees 30 minutes 18 seconds West 2,812.45 feet to the Northeast corner of the East portion of State Lease No. 3258, as amended having Coordinates of X = 2,314,923.76 and Y = 196,036.82; thence South 89 degrees 30 minutes 18 seconds West

1,129.13 feet along the North boundary of the East portion of said State Lease No. 3258 to the Southeast corner of State Lease No. 21088 having Coordinates of X = 2,313,794.68 and Y = 196,027.07; thence along the boundaries of said State Lease No. 21088 the following courses: North 48 degrees 19 minutes 14 seconds East 187.88 feet to a point having Coordinates of X = 2,313,935.00 and Y = 196,152.00 and North 73 degrees 27 minutes 48 seconds West 3,981.29 feet to its Northwest corner and a point on the west boundary of State Lease No. 1480, as amended having Coordinates of X = 2,310,118.39 and Y = 197,285.19; thence North 31 degrees 20 minutes 43 seconds West 809.77 feet to a corner having Coordinates of X = 2,309,967.15 and Y = 197,976.77, South 84 degrees 46 minutes 18 seconds West 2,024.53 feet to a corner having Coordinates of X = 2,307,681.04 and Y = 197,792.28, South 81 degrees 46 minutes 24 seconds West 1,108.08 feet to a corner having Coordinates of X = 2,306,587.33 and Y = 197,634.16 and South 77 degrees 05 minutes 33 seconds West 503.16 feet to a point having Coordinates of X = 2,306,096.88 and Y = 197,521.76; thence North 4,252.69 feet to the point of beginning, **LESS AND EXCEPT** Operating Agreement 0320 as described as follows: Beginning at a point having Coordinates of X = 2,309,754.00 and Y = 202,698.00; thence South 73 degrees 39 minutes 41 seconds East 3,284.76 feet to a point having Coordinates of X = 2,312,906.11 and Y = 201,773.95; thence South 63 degrees 21 minutes 41 seconds West 2,123.35 feet to a point having Coordinates of X = 2,311,008.15 and Y = 200,821.92; thence North 70 degrees 12 minutes 55 seconds West 1,189.67 feet to a point having Coordinates of X = 2,309,888.71 and Y = 201,224.61; thence North 05 degrees 13 minutes 26 seconds West 1,479.54 feet to the point of beginning, from the surface to one hundred feet below the stratigraphic equivalent of the Tex 11 Sand, as seen in the XPLOR State Lease 1480 No.2 (Serial No. 224584) between 13,096 feet and 13,190 feet MD. This lease includes only waterbottoms claimed and owned by the state and specifically excludes any land which the state may claim or own and to which the mineral rights are vested in the state, nominated tract containing approximately **1,358 acres**, all as more particularly outlined on a plat on file in the Office of Mineral Resources, Department of Natural Resources. All bearings, distances and coordinates are based on Louisiana Coordinate System of 1927, (North or South Zone), where applicable.

NOTE: The above description of the Tract nominated for lease has been provided and corrected, where required, exclusively by the nomination party. Any mineral lease selected from this Tract and awarded by the Louisiana State Mineral and Energy Board shall be without warranty of any kind, either express, implied, or statutory, including, but not limited to, the implied warranties of merchantability and fitness for a particular purpose. Should the mineral lease awarded by the Louisiana State Mineral and Energy Board be subsequently modified, cancelled or abrogated due to the existence of conflicting leases, operating agreements, private claims or other future obligations or conditions which may affect all or any portion of the leased Tract, it shall not relieve the Lessee of the obligation to pay any bonus due thereon to the Louisiana State Mineral and

Energy Board, nor shall the Louisiana State Mineral and Energy Board be obligated to refund any consideration paid by the Lessor prior to such modification, cancellation, or abrogation, including, but not limited to, bonuses, rentals and royalties.

NOTE: The State of Louisiana does hereby reserve, and this lease shall be subject to, the imprescriptible right of surface use in the nature of a servitude in favor of the Department of Natural Resources, including its Offices and Commissions, for the sole purpose of implementing, constructing, servicing and maintaining approved coastal zone management and/or restoration projects. Utilization of any and all rights derived under this lease by the mineral lessee, its agents, successors or assigns, shall not interfere with nor hinder the reasonable surface use by the Department of Natural Resources, its Offices or Commissions, as herein above reserved.

Applicant: CYPRESS ENERGY CORPORATION

Bidder	Cash Payment	Price/Acre	Rental	Oil	Gas	Other

Legend

13040063

Active_Leases

IMAGERY.DOQQ_2008_1M_CIR

0 2,000 Feet



LAFOURCHE PARISH

TIMBALIER BAY

SL 14589

SL 1480

AO 0320

SL 21088

SL 1480

SL 1480

P.O.B.

TRACT 43170 - Terrebonne Parish, Louisiana

All of the lands now or formerly constituting the beds and bottoms of all water bodies of every nature and description as to which title is vested in the State of Louisiana, together with all islands arising therein and other lands formed by accretion or by reliction, where allowed by law, excepting tax adjudicated lands, and not presently under mineral lease on April 10, 2013, situated in Terrebonne Parish, Louisiana, and more particularly described as follows: Beginning at the Southernmost Southwest corner of State Lease No. 724, as amended, having Coordinates of X = 2,165,536.31 and Y = 193,716.36; thence along the Western boundary of said State Lease No. 724, as amended, the following courses: Northwesterly on an arc having a radius of 13,200.00 feet and a center at X = 2,152,463.32 and Y = 191,889.66 to a point having Coordinates of X = 2,165,385.41 and Y = 194,584.03; Northwesterly on an arc having a radius of 13,200.00 feet and a center at X = 2,152,463.32 and Y = 191,889.66 to a point having Coordinates of X = 2,162,989.91 and Y = 199,854.01; Northwesterly on an arc having a radius of 13,200.00 feet and a center at X = 2,152,463.32 and Y = 191,889.66 to a point having Coordinates of X = 2,160,404.61 and Y = 202,433.66; North 00 degrees 16 minutes 35 seconds West 6,234.62 feet to a point having Coordinates of X = 2,160,374.53 and Y = 208,668.21; and North 89 degrees 00 minutes 42 seconds East 3,653.83 feet to a point having Coordinates of X = 2,164,027.82 and Y = 208,731.23; thence North 89 degrees 00 minutes 42 seconds East 3,995.00 feet to a point having Coordinates of X = 2,168,022.23 and Y = 208,800.14; thence South 00 degrees 51 minutes 57 seconds East 15,072.41 feet to a point having Coordinates of X = 2,168,249.99 and Y = 193,729.45, said point being on the Southern boundary of said State Lease No. 724, as amended; thence South 89 degrees 43 minutes 25 seconds West 2,713.71 feet along said Southern boundary of said State Lease No. 724, as amended, to the point of beginning, **LESS AND EXCEPT** any portion of State Lease No. 724 waterbottoms as same existed as of March 26, 1946, that may lie within the above described tract, containing approximately **278 acres**, all as more particularly outlined on a plat on file in the Office of Mineral Resources, Department of Natural Resources. All bearings, distances and coordinates are based on Louisiana Coordinate System of 1927, (North or South Zone), where applicable.

NOTE: The above description of the Tract nominated for lease has been provided and corrected, where required, exclusively by the nomination party. Any mineral lease selected from this Tract and awarded by the Louisiana State Mineral and Energy Board shall be without warranty of any kind, either express, implied, or statutory, including, but not limited to, the implied warranties of merchantability and fitness for a particular purpose. Should the mineral lease awarded by the Louisiana State Mineral and Energy Board be subsequently modified, cancelled or abrogated due to the existence of conflicting leases, operating agreements, private claims or other future obligations or conditions which may affect all or any portion of the leased Tract, it shall not relieve the Lessee of the obligation to pay any bonus due thereon to the Louisiana State Mineral and

Energy Board, nor shall the Louisiana State Mineral and Energy Board be obligated to refund any consideration paid by the Lessor prior to such modification, cancellation, or abrogation, including, but not limited to, bonuses, rentals and royalties.

NOTE: The State of Louisiana does hereby reserve, and this lease shall be subject to, the imprescriptible right of surface use in the nature of a servitude in favor of the Department of Natural Resources, including its Offices and Commissions, for the sole purpose of implementing, constructing, servicing and maintaining approved coastal zone management and/or restoration projects. Utilization of any and all rights derived under this lease by the mineral lessee, its agents, successors or assigns, shall not interfere with nor hinder the reasonable surface use by the Department of Natural Resources, its Offices or Commissions, as herein above reserved.

Applicant: ROBERT A. SCHROEDER, INC.

Bidder	Cash Payment	Price/Acre	Rental	Oil	Gas	Other

Legend
13040020
Active_Leases
IMAGERY.DOQQ_2008_1M_CIR

TERREBONNE PARISH

SL 724

P.O.B.

MONCLEUSE BAY

0 3,000 Feet

TRACT 43171 - Terrebonne Parish, Louisiana

All of the lands now or formerly constituting the beds and bottoms of all water bodies of every nature and description as to which title is vested in the State of Louisiana, together with all islands arising therein and other lands formed by accretion or by reliction, where allowed by law, excepting tax adjudicated lands, and not presently under mineral lease on April 10, 2013, situated in Terrebonne Parish, Louisiana, and more particularly described as follows: Beginning at a point having Coordinates of X = 2,281,644.00 and Y = 207,220.66; thence East 4,536.00 feet to a point having Coordinates of X = 2,286,180.00 and Y = 207,220.66; thence South 8,278.66 feet to the Northwest corner of State Lease No. 20896 having Coordinates of X = 2,286,180.00 and Y = 198,942.00; thence continue South 2,678.86 feet along the West boundary of said State Lease No. 20896 to its Southwest corner and the Northwest corner of State Lease No. 20898 having Coordinates of X = 2,286,180.00 and Y = 196,263.14; thence West 1,886.04 feet to a point on the East boundary of State Lease No. 199, as amended, having Coordinates of X = 2,284,293.96 and Y = 196,263.14; thence along the boundary of said State Lease No. 199 the following courses: North 00 degrees 25 minutes 10 seconds West 753.90 feet to a corner having Coordinates of X = 2,284,288.43 and Y = 197,017.02; South 89 degrees 34 minutes 50 seconds West 2,600.00 feet to a corner having Coordinates of X = 2,281,688.50 and Y = 196,997.99; North 00 degrees 25 minutes 10 seconds West 1,200.00 feet to a corner having Coordinates of X = 2,281,679.72 and Y = 198,197.96; South 89 degrees 34 minutes 50 seconds West 326.96 feet to a corner having Coordinates of X = 2,281,352.77 and Y = 198,195.57; North 18 degrees 18 minutes 50 seconds East 239.08 feet to a corner having Coordinates of X = 2,281,427.90 and Y = 198,422.54; North 10 degrees 11 minutes 50 seconds East 162.80 feet to a corner having Coordinates of X = 2,281,456.72 and Y = 198,582.77; North 00 degrees 25 minute 10 seconds West 65.00 feet to a corner having Coordinates of X = 2,281,456.24 and Y = 198,647.76; North 01 degrees 45 minutes 10 seconds West 215.10 feet to a corner having Coordinates of X = 2,281,449.66 and Y = 198,862.76; North 07 degrees 08 minutes 10 seconds West 85.60 feet to a corner having Coordinates of X = 2,281,439.03 and Y = 198,947.70; North 13 degrees 06 minutes 10 seconds West 205.00 feet to a corner having Coordinates of X = 2,281,392.56 and Y = 199,147.36; North 09 degrees 53 minutes 10 seconds West 152.10 feet to a corner having Coordinates of X = 2,281,366.44 and Y = 199,297.20; North 00 degrees 25 minutes 10 seconds West 80.00 feet to a corner having Coordinates of X = 2,281,365.86 and Y = 199,377.20; North 08 degrees 15 minutes 50 seconds East 74.20 feet to a corner having Coordinates of X = 2,281,376.52 and Y = 199,450.63; North 19 degrees 57 minutes 50 seconds East 369.90 feet to a corner having Coordinates of X = 2,281,502.82 and Y = 199,798.30; South 58 degrees 47 minutes 50 seconds West 273.50 feet to a corner having Coordinates of X = 2,281,268.88 and Y = 199,656.61; South 48 degrees 43 minutes 50 seconds West 244.60 feet to a corner having Coordinates of X = 2,281,085.04 and Y = 199,495.27; South 44 degrees 34 minutes 50 seconds West 282.90 feet to a corner having Coordinates of X =

2,280,886.46 and Y = 199,293.77; South 54 degrees 47 minutes 50 seconds West 219.20 feet to a corner having Coordinates of X = 2,280,707.35 and Y = 199,167.41; North 04 degrees 08 minutes 50 seconds East 125.40 feet to a corner having Coordinates of X = 2,280,716.42 and Y = 199,292.48; North 10 degrees 31 minutes 50 seconds East 157.90 feet to a corner having Coordinates of X = 2,280,745.28 and Y = 199,447.72; North 14 degrees 59 minutes 50 seconds East 150.40 feet to a corner having Coordinates of X = 2,280,784.20 and Y = 199,593.00; North 17 degrees 19 minutes 50 seconds East 131.30 feet to a corner having Coordinates of X = 2,280,823.31 and Y = 199,718.34; North 24 degrees 16 minutes 50 seconds East 275.20 feet to a corner having Coordinates of X = 2,280,936.47 and Y = 199,969.20; North 24 degrees 08 minutes 50 seconds East 192.40 feet to a corner having Coordinates of X = 2,281,015.18 and Y = 200,144.76; South 76 degrees 31 minutes 50 seconds West 354.10 feet to a corner having Coordinates of X = 2,280,670.82 and Y = 200,062.28; North 33 degrees 47 minutes 50 seconds East 302.30 feet to a corner having Coordinates of X = 2,280,838.98 and Y = 200,313.50; South 73 degrees 25 minutes 50 seconds West 197.80 feet to a corner having Coordinates of X = 2,280,649.39 and Y = 200,257.08; North 20 degrees 56 minutes 50 seconds East 123.50 feet to a corner having Coordinates of X = 2,280,693.54 and Y = 200,372.43; North 83 degrees 47 minutes 10 seconds West 432.90 feet to a corner having Coordinates of X = 2,280,263.19 and Y = 200,419.28; North 81 degrees 21 minutes 10 seconds West 349.30 feet to a corner having Coordinates of X = 2,279,917.86 and Y = 200,471.80; North 17 degrees 14 minutes 50 seconds East 477.50 feet to a corner having Coordinates of X = 2,280,059.43 and Y = 200,927.83; North 81 degrees 26 minutes 10 seconds West 256.20 feet to a corner having Coordinates of X = 2,279,806.09 and Y = 200,965.98; North 80 degrees 44 minutes 10 seconds West 357.00 feet to a corner having Coordinates of X = 2,279,453.75 and Y = 201,023.45; North 78 degrees 49 minutes 10 seconds West 189.65 feet to a corner having Coordinates of X = 2,279,267.70 and Y = 201,060.22; North 00 degrees 25 minutes 10 seconds West 951.69 feet to a corner having Coordinates of X = 2,279,260.73 and Y = 202,011.89; North 20 degrees 01 minutes 50 seconds East 288.31 feet to a corner having Coordinates of X = 2,279,359.49 and Y = 202,282.76; North 23 degrees 07 minutes 50 seconds East 250.20 feet to a corner having Coordinates of X = 2,279,457.77 and Y = 202,512.85; North 28 degrees 55 minutes 50 seconds East 224.40 feet to a corner having Coordinates of X = 2,279,566.32 and Y = 202,709.24; North 32 degrees 28 minutes 50 seconds East 202.50 feet to a corner having Coordinates of X = 2,279,675.07 and Y = 202,880.07; South 88 degrees 16 minutes 50 seconds West 220.10 feet to a corner having Coordinates of X = 2,279,455.07 and Y = 202,873.46; South 82 degrees 47 minutes 50 seconds West 202.05 feet to a corner having Coordinates of X = 2,279,254.61 and Y = 202,848.13 and North 00 degrees 25 minutes 10 seconds West 1,012.70 feet to the Southwest corner of State Lease No. 21087 having Coordinates of X = 2,279,247.20 and Y = 203,860.80; thence along the boundaries of said State Lease No. 21087 the following courses: North 61 degrees 28 minutes 32 seconds East

381.70 feet to a point having Coordinates of X = 2,279,582.56 and Y = 204,043.07, North 66 degrees 05 minutes 00 seconds East 1,323.78 feet to a point having Coordinates of X = 2,280,792.68 and Y = 204,579.74 and North 36 degrees 58 minutes 05 seconds West 523.41 feet to its Northeast corner and a point on the south boundary of said State Lease No. 20946 having Coordinates of X = 2,280,477.92 and Y = 204,997.93; thence along the boundaries of said State Lease No. 20946 the following courses: North 60 degrees 28 minutes 32 seconds East 1,340.10 feet to a point having Coordinates of X = 2,281,644.00 and Y = 205,658.33, North 106.31 feet to a point having Coordinates of X = 2,281,644.00 and Y = 205,764.64 and North 1,456.02 feet the point of beginning, containing approximately **1,340.43 acres**, all as more particularly outlined on a plat on file in the Office of Mineral Resources, Department of Natural Resources. All bearings, distances and coordinates are based on Louisiana Coordinate System of 1927, (North or South Zone), where applicable.

NOTE: The above description of the Tract nominated for lease has been provided and corrected, where required, exclusively by the nomination party. Any mineral lease selected from this Tract and awarded by the Louisiana State Mineral and Energy Board shall be without warranty of any kind, either express, implied, or statutory, including, but not limited to, the implied warranties of merchantability and fitness for a particular purpose. Should the mineral lease awarded by the Louisiana State Mineral and Energy Board be subsequently modified, cancelled or abrogated due to the existence of conflicting leases, operating agreements, private claims or other future obligations or conditions which may affect all or any portion of the leased Tract, it shall not relieve the Lessee of the obligation to pay any bonus due thereon to the Louisiana State Mineral and Energy Board, nor shall the Louisiana State Mineral and Energy Board be obligated to refund any consideration paid by the Lessor prior to such modification, cancellation, or abrogation, including, but not limited to, bonuses, rentals and royalties.

NOTE: The State of Louisiana does hereby reserve, and this lease shall be subject to, the imprescriptible right of surface use in the nature of a servitude in favor of the Department of Natural Resources, including its Offices and Commissions, for the sole purpose of implementing, constructing, servicing and maintaining approved coastal zone management and/or restoration projects. Utilization of any and all rights derived under this lease by the mineral lessee, its agents, successors or assigns, shall not interfere with nor hinder the reasonable surface use by the Department of Natural Resources, its Offices or Commissions, as herein above reserved.

Applicant: CYPRESS ENERGY CORPORATION

Bidder	Cash Payment	Price/Acre	Rental	Oil	Gas	Other

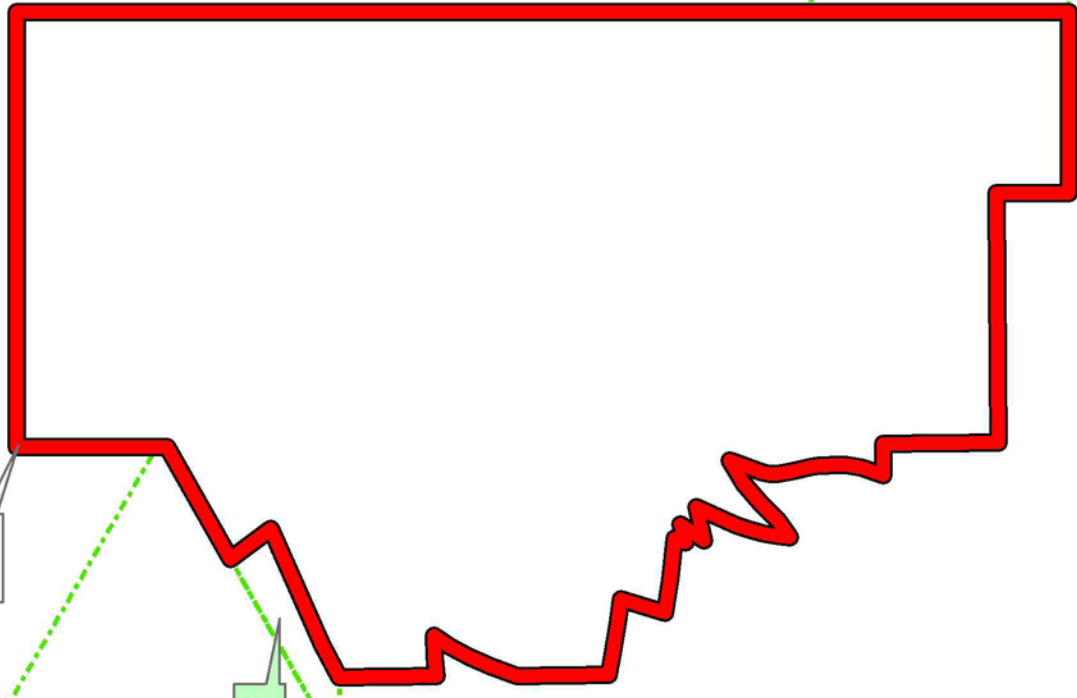
13040058
Active_Lease

TERREBONNE PARISH

LAKE BARRE

P.O.B.

0 2,000 Feet



TRACT 43172 - Terrebonne Parish, Louisiana

All of the lands now or formerly constituting the beds and bottoms of all water bodies of every nature and description as to which title is vested in the State of Louisiana, together with all islands arising therein and other lands formed by accretion or by reliction, where allowed by law, excepting tax adjudicated lands, and not presently under mineral lease on April 10, 2013, situated in Terrebonne Parish, Louisiana, and more particularly described as follows: Beginning at the Southernmost Southwest corner of State Lease No. 724, as amended, having Coordinates of X = 2,165,536.31 and Y = 193,716.36; thence South 89 degrees 43 minutes 25 seconds West 10,374.00 feet to a point having Coordinates of X = 2,155,162.43 and Y = 193,666.32; thence North 00 degrees 15 minutes 34 seconds West 15,002.04 feet to a point having Coordinates of X = 2,155,094.53 and Y = 208,668.21; thence East 5,280.00 feet to point having Coordinates of X = 2,160,374.53 and Y = 208,668.21, said point being the Southernmost Northwest corner of said State Lease No. 724, as amended; thence along the Western boundary of said State Lease No. 724, as amended, the following courses and distances, to wit: South 00 degrees 16 minutes 35 seconds East 6,234.62 feet to a point having Coordinates of X = 2,160,404.61 and Y = 202,433.66; Southwesterly on an arc having a radius of 13,200.00 feet and a center at X = 2,152,463.32 and Y = 191,889.66 to a point having Coordinates of X = 2,162,989.91 and Y = 199,854.01; Southwesterly on an arc having a radius of 13,200.00 feet and a center at X = 2,152,463.32 and Y = 191,889.66 to a point having Coordinates of X = 2,165,385.41 and Y = 194,584.03; and Southwesterly on an arc having a radius of 13,200.00 feet and a center at X = 2,152,463.32 and Y = 191,889.66 to the point of beginning, containing approximately **1,422 acres**, all as more particularly outlined on a plat on file in the Office of Mineral Resources, Department of Natural Resources. All bearings, distances and coordinates are based on Louisiana Coordinate System of 1927, (North or South Zone), where applicable.

NOTE: The above description of the Tract nominated for lease has been provided and corrected, where required, exclusively by the nomination party. Any mineral lease selected from this Tract and awarded by the Louisiana State Mineral and Energy Board shall be without warranty of any kind, either express, implied, or statutory, including, but not limited to, the implied warranties of merchantability and fitness for a particular purpose. Should the mineral lease awarded by the Louisiana State Mineral and Energy Board be subsequently modified, cancelled or abrogated due to the existence of conflicting leases, operating agreements, private claims or other future obligations or conditions which may affect all or any portion of the leased Tract, it shall not relieve the Lessee of the obligation to pay any bonus due thereon to the Louisiana State Mineral and Energy Board, nor shall the Louisiana State Mineral and Energy Board be obligated to refund any consideration paid by the Lessor prior to such modification, cancellation, or abrogation, including, but not limited to, bonuses, rentals and royalties.

NOTE: The State of Louisiana does hereby reserve, and this lease shall be subject to, the imprescriptible right of surface use in the nature of a servitude in favor of the Department of Natural Resources, including its Offices and Commissions, for the sole purpose of implementing, constructing, servicing and maintaining approved coastal zone management and/or restoration projects. Utilization of any and all rights derived under this lease by the mineral lessee, its agents, successors or assigns, shall not interfere with nor hinder the reasonable surface use by the Department of Natural Resources, its Offices or Commissions, as herein above reserved.

Applicant: ROBERT A. SCHROEDER, INC.

Bidder	Cash Payment	Price/Acre	Rental	Oil	Gas	Other

Legend

13040021



Active_Leases



IMAGERY.DOQQ_2008_1M_CIR

TERREBONNE PARISH

T21S - R16E

MONCLEUSE BAY

SL 724

P.O.B.

QUITMAN BAYOU

HACKBERRY LAKE

0 3,000 Feet



TRACT 43173 - Lafourche Parish, Louisiana

All of the lands now or formerly constituting the beds and bottoms of all water bodies of every nature and description as to which title is vested in the State of Louisiana, together with all islands arising therein and other lands formed by accretion or by reliction, where allowed by law, excepting tax adjudicated lands, and not presently under mineral lease on April 10, 2013, situated in Lafourche Parish, Louisiana, and more particularly described as follows: Beginning at a point on the East boundary of State Lease No. 14589 having Coordinates of X = 2,324,324.27 and Y = 204,032.99; thence East 12,418.79 feet to the Southwest corner of State Lease No. 20783 having Coordinates of X = 2,336,743.05 and Y = 204,032.99; thence South 00 degrees 25 minutes 29 seconds West 6,813.56 feet to a point having Coordinates of X = 2,336,692.55 and Y = 197,219.61; thence West 12,368.28 feet to a point on the East boundary of said State Lease No. 14589 having Coordinates of X = 2,324,324.27 and Y = 197,219.61; thence North 6,813.38 along the East boundary of said State Lease No. 14589 to the point of beginning, containing approximately **1,906 acres**, all as more particularly outlined on a plat on file in the Office of Mineral Resources, Department of Natural Resources. All bearings, distances and coordinates are based on Louisiana Coordinate System of 1927, (North or South Zone), where applicable.

NOTE: The above description of the Tract nominated for lease has been provided and corrected, where required, exclusively by the nomination party. Any mineral lease selected from this Tract and awarded by the Louisiana State Mineral and Energy Board shall be without warranty of any kind, either express, implied, or statutory, including, but not limited to, the implied warranties of merchantability and fitness for a particular purpose. Should the mineral lease awarded by the Louisiana State Mineral and Energy Board be subsequently modified, cancelled or abrogated due to the existence of conflicting leases, operating agreements, private claims or other future obligations or conditions which may affect all or any portion of the leased Tract, it shall not relieve the Lessee of the obligation to pay any bonus due thereon to the Louisiana State Mineral and Energy Board, nor shall the Louisiana State Mineral and Energy Board be obligated to refund any consideration paid by the Lessor prior to such modification, cancellation, or abrogation, including, but not limited to, bonuses, rentals and royalties.

NOTE: The State of Louisiana does hereby reserve, and this lease shall be subject to, the imprescriptible right of surface use in the nature of a servitude in favor of the Department of Natural Resources, including its Offices and Commissions, for the sole purpose of implementing, constructing, servicing and maintaining approved coastal zone management and/or restoration projects. Utilization of any and all rights derived under this lease by the mineral lessee, its agents, successors or assigns, shall not interfere with nor hinder the reasonable surface use by the Department of Natural Resources, its Offices or Commissions, as herein above reserved.

Applicant: CYPRESS ENERGY CORPORATION

Bidder	Cash Payment	Price/Acre	Rental	Oil	Gas	Other

Legend

13040062



Active_Leases



IMAGERY.DOQQ_2008_1M_CIR



LITTLE LAKE

SL 20783

LAFOURCHE PARISH

TIMBALIER BAY



SL 14589

P.O.B.

TRACT 43174 - Lafourche Parish, Louisiana

All of the lands now or formerly constituting the beds and bottoms of all water bodies of every nature and description as to which title is vested in the State of Louisiana, together with all islands arising therein and other lands formed by accretion or by reliction, where allowed by law, excepting tax adjudicated lands, and not presently under mineral lease on April 10, 2013, situated in Lafourche Parish, Louisiana, and more particularly described as follows: Beginning at a point on the East boundary of State Lease No. 1480, as amended, and a point on the West boundary of State Lease No. 14589 having Coordinates of X = 2,317,736.10 and Y = 199,161.00; thence North 4,500.00 feet along the East boundary of said State Lease No. 1480 to point located on an interior corner of State Lease No. 14589 having Coordinates of X = 2,317,736.10 and Y = 203,661.00; thence along the boundary of said State Lease No. 14589 the following courses and distances: East 3,300.00 feet to a corner having Coordinates of X = 2,321,036.10 and Y = 203,661.00, South 38 degrees 00 minutes 00 seconds East 1,200.00 feet to a corner having Coordinates of X = 2,321,774.89 and Y = 202,715.39, South 43 degrees 00 minutes 00 seconds West 2,250.01 feet to a corner having Coordinates of X = 2,320,240.39 and Y = 201,069.83, South 47 degrees 47 minutes 18 seconds West 2,841.07 feet to a corner having Coordinates of X = 2,318,136.10 and Y = 199,161.00 and West 400.00 feet to the point of beginning, containing approximately **266.88 acres**, all as more particularly outlined on a plat on file in the Office of Mineral Resources, Department of Natural Resources. All bearings, distances and coordinates are based on Louisiana Coordinate System of 1927, (North or South Zone), where applicable.

NOTE: The above description of the Tract nominated for lease has been provided and corrected, where required, exclusively by the nomination party. Any mineral lease selected from this Tract and awarded by the Louisiana State Mineral and Energy Board shall be without warranty of any kind, either express, implied, or statutory, including, but not limited to, the implied warranties of merchantability and fitness for a particular purpose. Should the mineral lease awarded by the Louisiana State Mineral and Energy Board be subsequently modified, cancelled or abrogated due to the existence of conflicting leases, operating agreements, private claims or other future obligations or conditions which may affect all or any portion of the leased Tract, it shall not relieve the Lessee of the obligation to pay any bonus due thereon to the Louisiana State Mineral and Energy Board, nor shall the Louisiana State Mineral and Energy Board be obligated to refund any consideration paid by the Lessor prior to such modification, cancellation, or abrogation, including, but not limited to, bonuses, rentals and royalties.

NOTE: The State of Louisiana does hereby reserve, and this lease shall be subject to, the imprescriptible right of surface use in the nature of a servitude in favor of the Department of Natural Resources, including its Offices and Commissions, for the sole purpose of implementing, constructing, servicing and maintaining approved coastal zone management

and/or restoration projects. Utilization of any and all rights derived under this lease by the mineral lessee, its agents, successors or assigns, shall not interfere with nor hinder the reasonable surface use by the Department of Natural Resources, its Offices or Commissions, as herein above reserved.

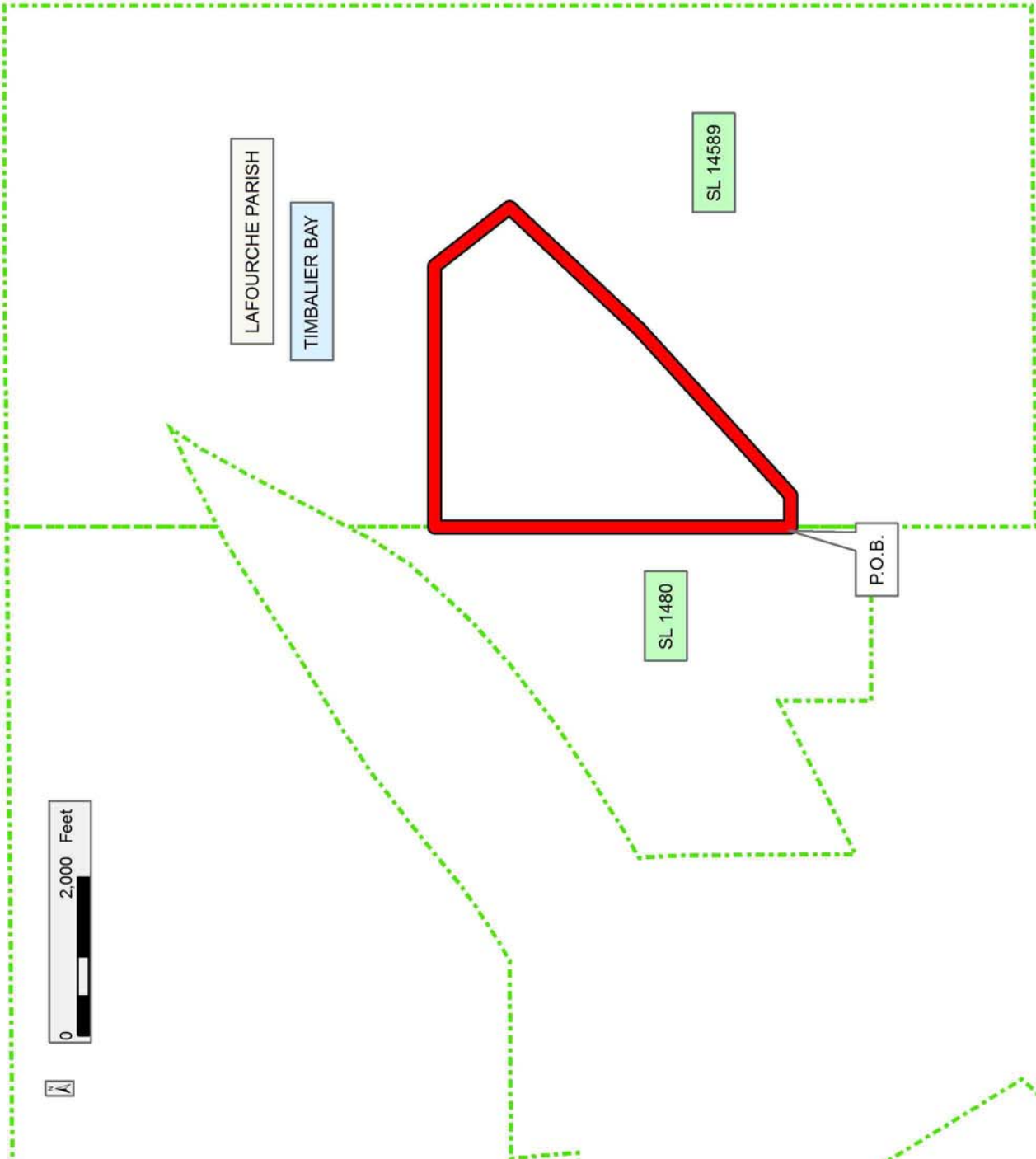
Applicant: CYPRESS ENERGY CORPORATION

Bidder	Cash Payment	Price/Acre	Rental	Oil	Gas	Other

Legend

13040069

Active_Leases



TRACT 43175 - Lafourche and Terrebonne Parishes, Louisiana

All of the lands now or formerly constituting the beds and bottoms of all water bodies of every nature and description as to which title is vested in the State of Louisiana, together with all islands arising therein and other lands formed by accretion or by reliction, where allowed by law, excepting tax adjudicated lands, and not presently under mineral lease on April 10, 2013, situated in Lafourche and Terrebonne Parishes, Louisiana, and more particularly described as follows: Beginning at the Southwest corner of State Lease No. 20901 having Coordinates of X = 2,294,204.61 and Y = 195,190.00; thence East 4,225.25 feet along the South boundary of said State Lease No. 20901 to its Southeast corner and the Southwest corner of State Lease No. 20902 having Coordinates of X = 2,298,429.86 and Y = 195,190.00; thence continue East 1,290.47 feet along the South boundary of said State Lease No. 20902 to its Southeast corner and a point on the West boundary of State Lease No. 3599, as amended having Coordinates of X = 2,299,720.33 and Y = 195,190.00; thence South 49 degrees 19 minutes 18 seconds East 10,121.83 feet along the West boundary of said State Lease No. 3599 to its Southern tip having Coordinates of X = 2,307,396.54 and Y = 188,592.47; thence West 15,086.54 feet to a point having Coordinates of X = 2,292,310.00 and Y = 188,592.47; thence North 7,312.53 feet to the Southeast corner of State Lease No. 20900 having Coordinates of X = 2,292,310.00 and Y = 195,905.00; thence North 31 degrees 37 minutes 33 seconds West 444.70 feet along the East boundary of said State Lease No. 20900 to its Northeast corner and the Southeast corner of State Lease No. 20895 having Coordinates of X = 2,292,076.81 and Y = 196,283.66; thence continue North 31 degrees 37 minutes 33 seconds West 1,395.60 feet along the East boundary of said State Lease No. 20895 to its Northern tip and a point on the South boundary of State Lease No. 20896 having Coordinates of X = 2,291,345.00 and Y = 197,472.00; thence North 64 degrees 27 minutes 49 seconds East approximately 3,169 feet along the South boundary of said State Lease No. 20896 to its Southeast corner, also being a point on the West boundary of State Lease No. 3723 and State Lease No. 3278; thence South approximately 2,539 feet along the West boundary of said State Lease No. 3723 and State Lease No. 3278 to their Southwest corner, also being the Northwest corner of said State Lease No. 20901; thence continue South approximately 1,109 feet along the West boundary of said State Lease No. 20901 to the point of beginning, (This lease includes only waterbottoms claimed and owned by the state and specifically excludes any land which the state may claim or own and to which the mineral rights are vested in the state), containing approximately **1,839 acres**, all as more particularly outlined on a plat on file in the Office of Mineral Resources, Department of Natural Resources. All bearings, distances and coordinates are based on Louisiana Coordinate System of 1927, (North or South Zone), where applicable.

NOTE: The above description of the Tract nominated for lease has been provided and corrected, where required, exclusively by the nomination party. Any mineral lease selected from this Tract and awarded by the Louisiana State Mineral and Energy Board shall be without warranty of any

kind, either express, implied, or statutory, including, but not limited to, the implied warranties of merchantability and fitness for a particular purpose. Should the mineral lease awarded by the Louisiana State Mineral and Energy Board be subsequently modified, cancelled or abrogated due to the existence of conflicting leases, operating agreements, private claims or other future obligations or conditions which may affect all or any portion of the leased Tract, it shall not relieve the Lessee of the obligation to pay any bonus due thereon to the Louisiana State Mineral and Energy Board, nor shall the Louisiana State Mineral and Energy Board be obligated to refund any consideration paid by the Lessor prior to such modification, cancellation, or abrogation, including, but not limited to, bonuses, rentals and royalties.

NOTE: The State of Louisiana does hereby reserve, and this lease shall be subject to, the imprescriptible right of surface use in the nature of a servitude in favor of the Department of Natural Resources, including its Offices and Commissions, for the sole purpose of implementing, constructing, servicing and maintaining approved coastal zone management and/or restoration projects. Utilization of any and all rights derived under this lease by the mineral lessee, its agents, successors or assigns, shall not interfere with nor hinder the reasonable surface use by the Department of Natural Resources, its Offices or Commissions, as herein above reserved.

Applicant: CYPRESS ENERGY CORPORATION

Bidder	Cash Payment	Price/Acre	Rental	Oil	Gas	Other

Legend

- 13040065
- Active_Leases
- Counties

IMAGERY.DOQQ_2008_1M_CIR



TERREBONNE PARISH

LAFOURCHE PARISH

LAKE RACCOURCI

TIMBALIER BAY

SL 20896

SL 20895

SL 20900

SL 3278

SL 20901

SL 20902

SL 3599

P.O.B.

