

TRACT 43176 - Lafourche Parish, Louisiana

All of the lands now or formerly constituting the beds and bottoms of all water bodies of every nature and description as to which title is vested in the State of Louisiana, together with all islands arising therein and other lands formed by accretion or by reliction, where allowed by law, excepting tax adjudicated lands, and not presently under mineral lease on April 10, 2013, situated in Lafourche Parish, Louisiana, and more particularly described as follows: Beginning at the South corner of State Lease No. 3599, as amended having Coordinates of X = 2,307,396.54 and Y = 188,592.47; thence North 00 degrees 29 minutes 42 seconds West 3,575.66 feet along the East boundary of said State Lease No. 3599 to the Southwest corner of State Lease No. 21089 having Coordinates of X = 2,307,365.65 and Y = 192,168.00; thence along the boundaries of said State Lease No. 21089 the following courses: East 2,174.35 feet to a point having Coordinates of X = 2,309,540.00 and Y = 192,168.00 and North 44 degrees 02 minutes 10 seconds East 2,429.67 feet to a point on the West boundary of State Lease No. 3258, as amended having Coordinates of X = 2,311,228.89 and Y = 193,914.70; thence along the West, South and East boundary of said State Lease No. 3258, as amended the following courses and distances: South 00 degrees 26 minutes 59 seconds East 1,399.89 feet to a corner having Coordinates of X = 2,311,239.87 and Y = 192,514.86, North 89 degrees 30 minutes 18 seconds East 2,788.87 feet to a corner having Coordinates of X = 2,314,028.64 and Y = 192,538.95, North 57 degrees 00 minutes 41 seconds West 534.71 feet to a corner having Coordinates of X = 2,313,580.14 and Y = 192,830.09, North 58 degrees 14 minutes 26 seconds East 493.84 feet to a corner having Coordinates of X = 2,314,000.03 and Y = 193,090.02, North 49 degrees 23 minutes 55 seconds East 368.80 feet to a corner having Coordinates of X = 2,314,280.04 and Y = 193,330.03, North 46 degrees 04 minutes 51 seconds East 374.80 feet to a corner having Coordinates of X = 2,314,550.02 and Y = 193,590.01; North 37 degrees 18 minutes 14 seconds East 264.00 feet to a corner having Coordinates of X = 2,314,710.01 and Y = 193,800.00, North 31 degrees 49 minutes 39 seconds East 341.30 feet to a corner having Coordinates of X = 2,314,890.00 and Y = 194,090.00, North 24 degrees 37 minutes 24 seconds East 264.00 feet to a corner having Coordinates of X = 2,315,000.00 and Y = 194,329.98, North 20 degrees 22 minutes 35 seconds East 373.40 feet to a corner having Coordinates of X = 2,315,130.01 and Y = 194,680.01, North 15 degrees 06 minutes 34 seconds East 580.77 feet to a corner having Coordinates of X = 2,315,281.40 and Y = 195,240.71, North 54 degrees 21 minutes 40 seconds West 530.82 feet to a corner having Coordinates of X = 2,314,850.00 and Y = 195,550.00 and North 08 degrees 36 minutes 56 seconds East 492.38 feet to its Northeast corner having Coordinates of X = 2,314,923.76 and Y = 196,036.82; thence North 89 degrees 30 minutes 18 seconds East 2,812.45 feet to a point on being the Southeast corner of State Lease No. 14589 having Coordinates of X = 2,317,736.10 and Y = 196,061.12; thence North 89 degrees 30 minutes 18 seconds East 112.31 feet to a point on the Southern boundary of said State Lease No. 14589 having Coordinates of X = 2,317,848.41 and Y = 196,062.09; thence South 7,469.62 feet to a point having Coordinates of X = 2,317,848.41 and Y = 188,592.47; thence West 10,451.87 feet to the point of beginning, **LESS AND EXCEPT** any right,

title, and interest in lands owned by and not under lease from the State of Louisiana, on behalf of the Lafourche Parish School Board, situated in Section 16, Township 22 South, Range 21 East, Lafourche Parish, Louisiana, contained within the above described tract, (This lease includes only waterbottoms claimed and owned by the state and specifically excludes any land which the state may claim or own and to which the mineral rights are vested in the state), containing approximately **1,129 acres**, all as more particularly outlined on a plat on file in the Office of Mineral Resources, Department of Natural Resources. All bearings, distances and coordinates are based on Louisiana Coordinate System of 1927, (North or South Zone), where applicable.

NOTE: The above description of the Tract nominated for lease has been provided and corrected, where required, exclusively by the nomination party. Any mineral lease selected from this Tract and awarded by the Louisiana State Mineral and Energy Board shall be without warranty of any kind, either express, implied, or statutory, including, but not limited to, the implied warranties of merchantability and fitness for a particular purpose. Should the mineral lease awarded by the Louisiana State Mineral and Energy Board be subsequently modified, cancelled or abrogated due to the existence of conflicting leases, operating agreements, private claims or other future obligations or conditions which may affect all or any portion of the leased Tract, it shall not relieve the Lessee of the obligation to pay any bonus due thereon to the Louisiana State Mineral and Energy Board, nor shall the Louisiana State Mineral and Energy Board be obligated to refund any consideration paid by the Lessor prior to such modification, cancellation, or abrogation, including, but not limited to, bonuses, rentals and royalties.

NOTE: The State of Louisiana does hereby reserve, and this lease shall be subject to, the imprescriptible right of surface use in the nature of a servitude in favor of the Department of Natural Resources, including its Offices and Commissions, for the sole purpose of implementing, constructing, servicing and maintaining approved coastal zone management and/or restoration projects. Utilization of any and all rights derived under this lease by the mineral lessee, its agents, successors or assigns, shall not interfere with nor hinder the reasonable surface use by the Department of Natural Resources, its Offices or Commissions, as herein above reserved.

Applicant: CYPRESS ENERGY CORPORATION

Bidder	Cash Payment	Price/Acre	Rental	Oil	Gas	Other

Legend

13040066



Active_Leases

IMAGERY.DOQQ_2008_1M_CIR

0 2,000 Feet



LAFOURCHE PARISH

TIMBALIER BAY

SL 14589

SL 21089

SL 3258

SL 3599

P.O.B.

TRACT 43177 - Terrebonne Parish, Louisiana

All of the lands now or formerly constituting the beds and bottoms of all water bodies of every nature and description as to which title is vested in the State of Louisiana, together with all islands arising therein and other lands formed by accretion or by reliction, where allowed by law, excepting tax adjudicated lands, and not presently under mineral lease on April 10, 2013, situated in Terrebonne Parish, Louisiana, and more particularly described as follows: Beginning at the Southwest corner of State Lease No. 20899 having Coordinates of X = 2,287,183.00 and Y = 193,164.00; thence North 61 degrees 52 minutes 12 seconds East 2,393.69 feet along the South boundary of said State Lease No. 20899 to its Southeast corner and the Southwest corner of State Lease 20900 having Coordinates of X = 2,289,293.95 and Y = 194,292.56; thence North 61 degrees 52 minutes 12 seconds East 3,420.02 feet along the South boundary of said State Lease No. 20900 to its Southeast corner having Coordinates of X = 2,292,310.00 and Y = 195,905.00; thence South 8,844.00 feet to a point having Coordinates of X = 2,292,310.00 and Y = 187,061.00; thence Westerly approximately 4,274 feet to a point on the boundary of Special Section 16; thence along the boundary of said Special Section 16 the following: Northerly approximately 2,080 feet and Westerly approximately 6,739 feet to a point on the Eastern boundary of State Lease No. 199, as amended; thence along the boundaries of said State Lease No. 199 the following courses: North 00 degrees 25 minutes 10 seconds West approximately 917 feet to a point having Coordinates of X = 2,281,289.30 and Y = 190,016.58, South 89 degrees 34 minutes 50 seconds West 2,600.00 feet to a point having Coordinates of X = 2,278,689.37 and Y = 189,997.55, North 00 degrees 25 minutes 10 seconds West 600.00 feet to a point having Coordinates of X = 2,278,684.98 and Y = 190,597.53, South 89 degrees 34 minutes 50 seconds West 1,023.22 feet to a point having Coordinates of X = 2,277,661.79 and Y = 190,590.04, North 00 degrees 25 minutes 10 seconds West 1,349.34 feet to a point having Coordinates of X = 2,277,651.91 and Y = 191,939.35, North 89 degrees 34 minutes 50 seconds East 2,220.03 feet to a point having Coordinates of X = 2,279,871.88 and Y = 191,955.60, North 00 degrees 25 minutes 10 seconds West 2,140.16 feet to a point having Coordinates of X = 2,279,856.22 and Y = 194,095.70, North 89 degrees 34 minutes 50 seconds East 453.49 feet to a point having Coordinates of X = 2,280,309.69 and Y = 194,099.02, South 00 degrees 25 minutes 10 seconds East 1,111.20 feet to a point having Coordinates of X = 2,280,317.82 and Y = 192,987.85, North 89 degrees 34 minutes 50 seconds East 4,000.00 feet to a point having Coordinates of X = 2,284,317.72 and Y = 193,017.13 and North 00 degrees 25 minutes 10 seconds West 3,246.10 feet to a point having Coordinates of X = 2,284,293.96 and Y = 196,263.14; thence East 1,886.04 feet to the Northwest corner of State Lease No. 20898 having Coordinates of X = 2,286,180.00 and Y = 196,263.14; thence South 1,258.14 feet along the west boundary of said State Lease No. 20898 to its Southwest corner and the Northwest corner of said State Lease No. 20899 having Coordinates of X = 2,286,180.00 and Y = 195,005.00; thence South 28 degrees 34 minutes 56 seconds East 2,096.50 feet along the West boundary of said State Lease No. 20899 to the point of beginning, **LESS AND EXCEPT**

any right, title, and interest in lands owned by and not under lease from the State of Louisiana, on behalf of the Terrebonne Parish School Board, situated in Section 16, Township 22 South, Range 20 East, Terrebonne Parish, Louisiana, contained within the above described tract, containing approximately **1,723 acres**, all as more particularly outlined on a plat on file in the Office of Mineral Resources, Department of Natural Resources. All bearings, distances and coordinates are based on Louisiana Coordinate System of 1927, (North or South Zone), where applicable.

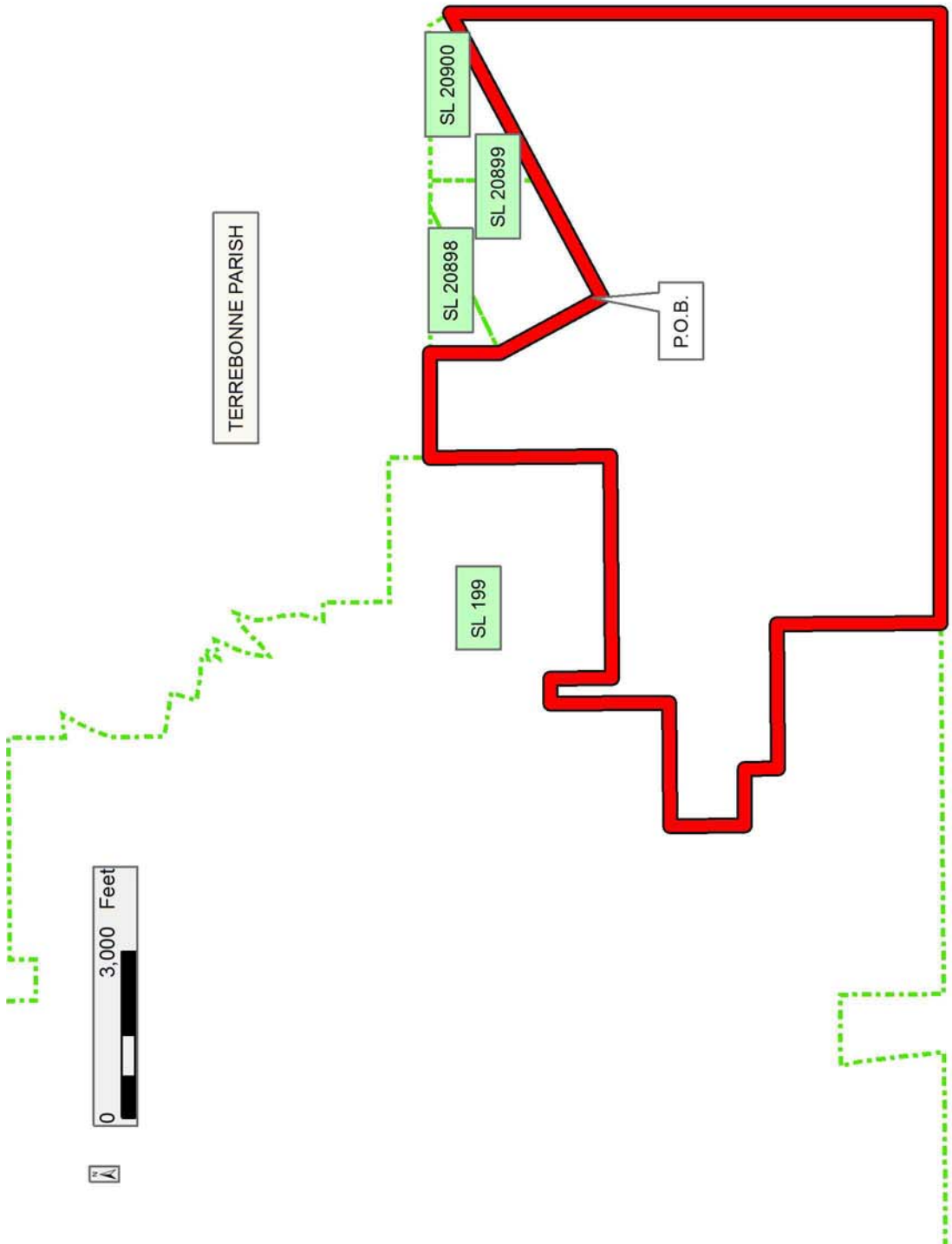
NOTE: The above description of the Tract nominated for lease has been provided and corrected, where required, exclusively by the nomination party. Any mineral lease selected from this Tract and awarded by the Louisiana State Mineral and Energy Board shall be without warranty of any kind, either express, implied, or statutory, including, but not limited to, the implied warranties of merchantability and fitness for a particular purpose. Should the mineral lease awarded by the Louisiana State Mineral and Energy Board be subsequently modified, cancelled or abrogated due to the existence of conflicting leases, operating agreements, private claims or other future obligations or conditions which may affect all or any portion of the leased Tract, it shall not relieve the Lessee of the obligation to pay any bonus due thereon to the Louisiana State Mineral and Energy Board, nor shall the Louisiana State Mineral and Energy Board be obligated to refund any consideration paid by the Lessor prior to such modification, cancellation, or abrogation, including, but not limited to, bonuses, rentals and royalties.

NOTE: The State of Louisiana does hereby reserve, and this lease shall be subject to, the imprescriptible right of surface use in the nature of a servitude in favor of the Department of Natural Resources, including its Offices and Commissions, for the sole purpose of implementing, constructing, servicing and maintaining approved coastal zone management and/or restoration projects. Utilization of any and all rights derived under this lease by the mineral lessee, its agents, successors or assigns, shall not interfere with nor hinder the reasonable surface use by the Department of Natural Resources, its Offices or Commissions, as herein above reserved.

Bidder	Cash Payment	Price/Acre	Rental	Oil	Gas	Other

Applicant: CYPRESS ENERGY CORPORATION

Legend
13040064
Active_Leases



TRACT 43178 - Terrebonne Parish, Louisiana

All of the lands now or formerly constituting the beds and bottoms of all water bodies of every nature and description as to which title is vested in the State of Louisiana, together with all islands arising therein and other lands formed by accretion or by reliction, where allowed by law, excepting tax adjudicated lands, and not presently under mineral lease on April 10, 2013, situated in Terrebonne Parish, Louisiana, and more particularly described as follows: Beginning at the Southernmost Southwest corner of State Lease No. 724, as amended, having Coordinates of X = 2,165,536.31 and Y = 193,716.36; thence North 89 degrees 43 minutes 25 seconds East 5,449.00 feet along the Southern boundary of said State Lease No. 724, as amended, to a point having Coordinates of X = 2,170,985.25 and Y = 193,742.65; thence South 8,076.33 feet to a point having Coordinates of X = 2,170,985.25 and Y = 185,666.32; thence West 15,822.82 feet to a point having Coordinates of X = 2,155,162.43 and Y = 185,666.32; thence North 8,000.00 feet to a point having Coordinates of X = 2,155,162.43 and Y = 193,666.32; thence North 89 degrees 43 minutes 25 seconds East 10,374.00 feet to the point of beginning, containing approximately **919 acres**, all as more particularly outlined on a plat on file in the Office of Mineral Resources, Department of Natural Resources. All bearings, distances and coordinates are based on Louisiana Coordinate System of 1927, (North or South Zone), where applicable.

NOTE: The above description of the Tract nominated for lease has been provided and corrected, where required, exclusively by the nomination party. Any mineral lease selected from this Tract and awarded by the Louisiana State Mineral and Energy Board shall be without warranty of any kind, either express, implied, or statutory, including, but not limited to, the implied warranties of merchantability and fitness for a particular purpose. Should the mineral lease awarded by the Louisiana State Mineral and Energy Board be subsequently modified, cancelled or abrogated due to the existence of conflicting leases, operating agreements, private claims or other future obligations or conditions which may affect all or any portion of the leased Tract, it shall not relieve the Lessee of the obligation to pay any bonus due thereon to the Louisiana State Mineral and Energy Board, nor shall the Louisiana State Mineral and Energy Board be obligated to refund any consideration paid by the Lessor prior to such modification, cancellation, or abrogation, including, but not limited to, bonuses, rentals and royalties.

NOTE: The State of Louisiana does hereby reserve, and this lease shall be subject to, the imprescriptible right of surface use in the nature of a servitude in favor of the Department of Natural Resources, including its Offices and Commissions, for the sole purpose of implementing, constructing, servicing and maintaining approved coastal zone management and/or restoration projects. Utilization of any and all rights derived under this lease by the mineral lessee, its agents, successors or assigns, shall not interfere with nor hinder the reasonable surface use by the

Department of Natural Resources, its Offices or Commissions, as herein above reserved.

Applicant: ROBERT A. SCHROEDER, INC.

Bidder	Cash Payment	Price/Acre	Rental	Oil	Gas	Other

Legend

13040022



Active_Leases



IMAGERY.DOQQ_2008_1M_CIR

0 3,000 Feet



TERREBONNE PARISH

SL 724

FOUR ISLAND BAYOU

P.O.B.

DOG LAKE BAYOU

BAY CHARLIE

PASS DES ILES

TRACT 43179 - Lafourche Parish, Louisiana

All of the lands now or formerly constituting the beds and bottoms of all water bodies of every nature and description as to which title is vested in the State of Louisiana, together with all islands arising therein and other lands formed by accretion or by reliction, where allowed by law, excepting tax adjudicated lands, and not presently under mineral lease on April 10, 2013, situated in Lafourche Parish, Louisiana, and more particularly described as follows: Beginning at a point having Coordinates of X = 2,294,805.81 and Y = 188,592.47; thence East 11,549.25 feet to a point having Coordinates of X = 2,306,355.06 and Y = 188,592.47; thence South 8,281.57 feet to a point having Coordinates of X = 2,306,355.06 and Y = 180,310.90; thence West 11,549.25 feet to a point having Coordinates of X = 2,294,805.81 and Y = 180,310.90; thence North 8,281.57 feet to the point of beginning, containing approximately **2,195.73 acres**, all as more particularly outlined on a plat on file in the Office of Mineral Resources, Department of Natural Resources. All bearings, distances and coordinates are based on Louisiana Coordinate System of 1927, (North or South Zone), where applicable.

NOTE: The above description of the Tract nominated for lease has been provided and corrected, where required, exclusively by the nomination party. Any mineral lease selected from this Tract and awarded by the Louisiana State Mineral and Energy Board shall be without warranty of any kind, either express, implied, or statutory, including, but not limited to, the implied warranties of merchantability and fitness for a particular purpose. Should the mineral lease awarded by the Louisiana State Mineral and Energy Board be subsequently modified, cancelled or abrogated due to the existence of conflicting leases, operating agreements, private claims or other future obligations or conditions which may affect all or any portion of the leased Tract, it shall not relieve the Lessee of the obligation to pay any bonus due thereon to the Louisiana State Mineral and Energy Board, nor shall the Louisiana State Mineral and Energy Board be obligated to refund any consideration paid by the Lessor prior to such modification, cancellation, or abrogation, including, but not limited to, bonuses, rentals and royalties.

NOTE: The State of Louisiana does hereby reserve, and this lease shall be subject to, the imprescriptible right of surface use in the nature of a servitude in favor of the Department of Natural Resources, including its Offices and Commissions, for the sole purpose of implementing, constructing, servicing and maintaining approved coastal zone management and/or restoration projects. Utilization of any and all rights derived under this lease by the mineral lessee, its agents, successors or assigns, shall not interfere with nor hinder the reasonable surface use by the Department of Natural Resources, its Offices or Commissions, as herein above reserved.

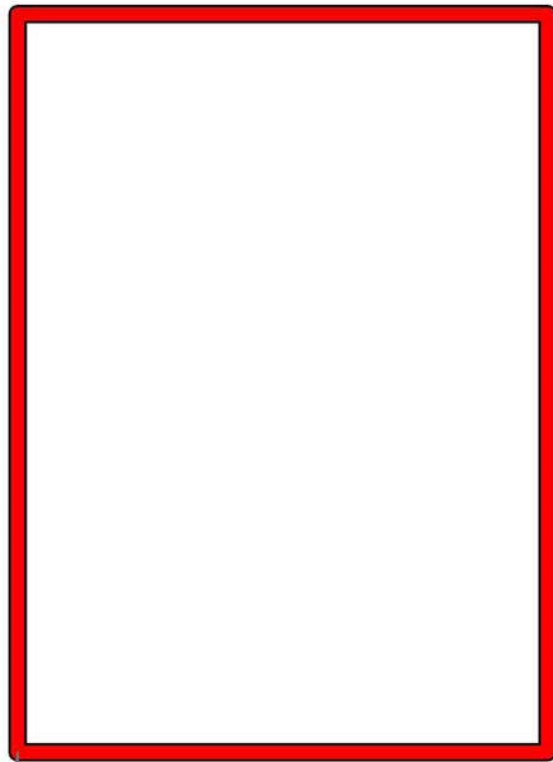
Applicant: CYPRESS ENERGY CORPORATION

Bidder	Cash Payment	Price/Acre	Rental	Oil	Gas	Other



LAFOURCHE PARISH

TIMBALIER BAY



P.O.B.

TRACT 43180 - Lafourche Parish, Louisiana

All of the lands now or formerly constituting the beds and bottoms of all water bodies of every nature and description as to which title is vested in the State of Louisiana, together with all islands arising therein and other lands formed by accretion or by reliction, where allowed by law, excepting tax adjudicated lands, and not presently under mineral lease on April 10, 2013, situated in Lafourche Parish, Louisiana, and more particularly described as follows: Beginning at a point having Coordinates of X = 2,306,355.06 and Y = 188,592.47; thence East 1,041.48 feet to the Southern tip of State Lease No. 3599, as amended having Coordinates of X = 2,307,396.54 and Y = 188,592.47; thence continue East 10,451.87 feet to a point having Coordinates of X = 2,317,848.41 and Y = 188,592.47; thence South 8,281.57 feet to a point having Coordinates of X = 2,317,848.41 and Y = 180,310.90; thence West 11,493.35 feet to a point having Coordinates of X = 2,306,355.06 and Y = 180,310.90; thence North 8,281.57 feet to the point of beginning, (This lease includes only waterbottoms claimed and owned by the state and specifically excludes any land which the state may claim or own and to which the mineral rights are vested in the state), containing approximately **2,152 acres**, all as more particularly outlined on a plat on file in the Office of Mineral Resources, Department of Natural Resources. All bearings, distances and coordinates are based on Louisiana Coordinate System of 1927, (North or South Zone), where applicable.

NOTE: The above description of the Tract nominated for lease has been provided and corrected, where required, exclusively by the nomination party. Any mineral lease selected from this Tract and awarded by the Louisiana State Mineral and Energy Board shall be without warranty of any kind, either express, implied, or statutory, including, but not limited to, the implied warranties of merchantability and fitness for a particular purpose. Should the mineral lease awarded by the Louisiana State Mineral and Energy Board be subsequently modified, cancelled or abrogated due to the existence of conflicting leases, operating agreements, private claims or other future obligations or conditions which may affect all or any portion of the leased Tract, it shall not relieve the Lessee of the obligation to pay any bonus due thereon to the Louisiana State Mineral and Energy Board, nor shall the Louisiana State Mineral and Energy Board be obligated to refund any consideration paid by the Lessor prior to such modification, cancellation, or abrogation, including, but not limited to, bonuses, rentals and royalties.

NOTE: The State of Louisiana does hereby reserve, and this lease shall be subject to, the imprescriptible right of surface use in the nature of a servitude in favor of the Department of Natural Resources, including its Offices and Commissions, for the sole purpose of implementing, constructing, servicing and maintaining approved coastal zone management and/or restoration projects. Utilization of any and all rights derived under this lease by the mineral lessee, its agents, successors or assigns, shall not interfere with nor hinder the reasonable surface use by the

Department of Natural Resources, its Offices or Commissions, as herein above reserved.

Applicant: CYPRESS ENERGY CORPORATION

Bidder	Cash Payment	Price/Acre	Rental	Oil	Gas	Other

Legend

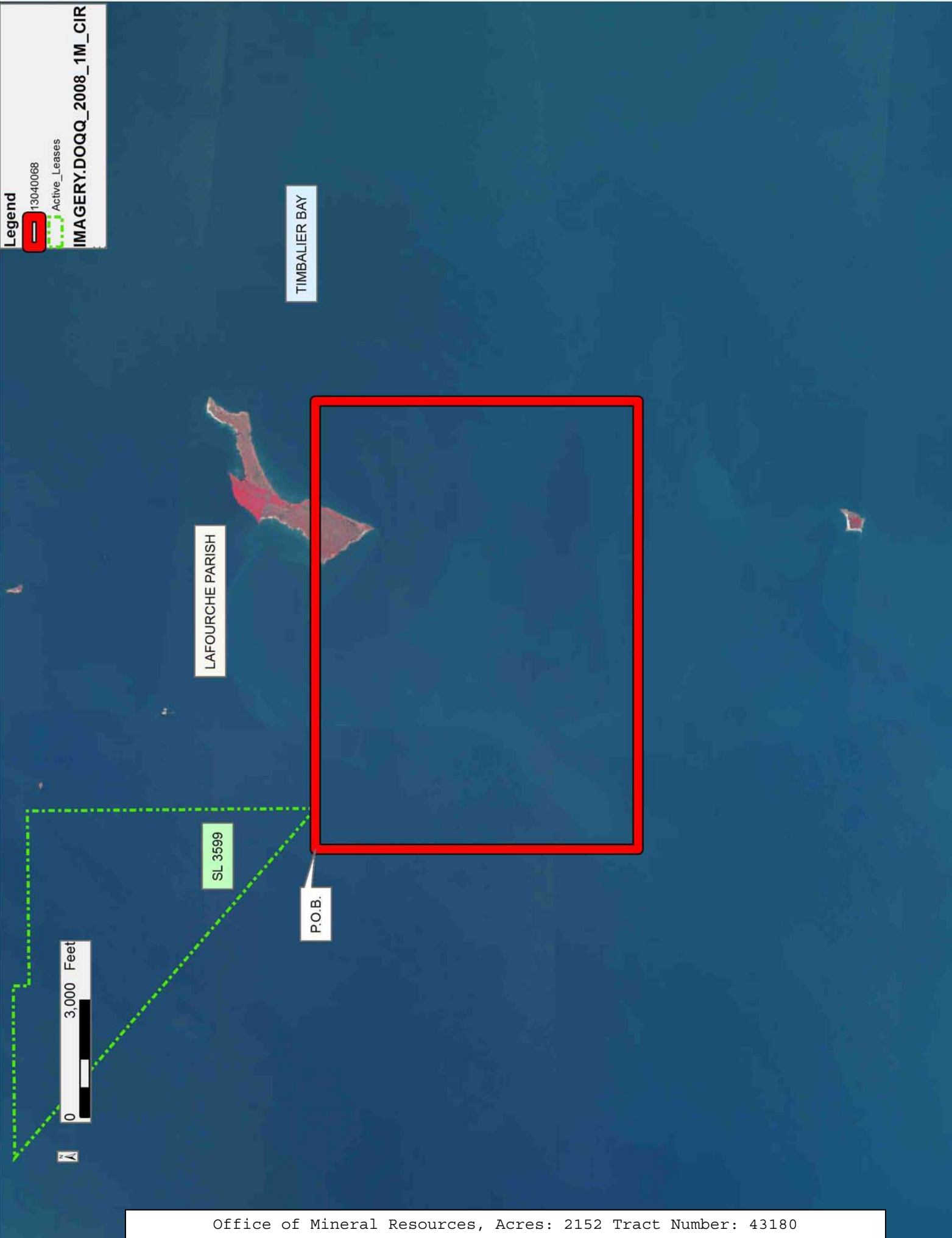
13040068



Active_Leases



IMAGERY.DOQQ_2008_1M_CIR



TRACT 43181 - Portion of Blocks 120, 121, and 122, South Timbalier Area, Revised, Terrebonne Parish, Louisiana

All of the lands now or formerly constituting the beds and bottoms of all water bodies of every nature and description as to which title is vested in the State of Louisiana, together with all islands arising therein and other lands formed by accretion or by reliction, where allowed by law, excepting tax adjudicated lands, and not presently under mineral lease on April 10, 2013, situated in Terrebonne Parish, Louisiana, and more particularly described as follows: Beginning at a point having Coordinates of X = 2,237,721.53 and Y = 159,243.00; thence East 9,011.47 feet to the Southwest corner of State Lease No. 20632 having Coordinates of X = 2,246,733.00 and Y = 159,243.00; thence continue East 5,664.13 feet along the South boundary of said State Lease No. 20632 to its Southeast corner and a point on the West boundary of State Lease No. 2857, as amended having Coordinates of X = 2,252,397.13 and Y = 159,243.00; thence along the boundaries of said State Lease No. 2857 the following courses: South 03 degrees 48 minutes 50 seconds East 343.77 feet to a point having Coordinates of X = 2,252,420.00 and Y = 158,899.99, South 08 degrees 44 minutes 46 seconds East 328.82 feet to a point having Coordinates of X = 2,252,470.00 and Y = 158,574.99, South 13 degrees 41 minutes 33 seconds East 1,415.22 feet to a point having Coordinates of X = 2,252,805.00 and Y = 157,199.99, South 17 degrees 42 minutes 12 seconds East 1,857.99 feet to a point having Coordinates of X = 2,253,370.00 and Y = 155,429.99, South 20 degrees 20 minutes 38 seconds East 949.21 feet to a point having Coordinates of X = 2,253,699.99 and Y = 154,539.99 and South 15 degrees 47 minutes 37 seconds East 396.98 feet to its southern tip and a point on the west boundary of State Lease No. 1249, as amended having Coordinates of X = 2,253,808.04 and Y = 154,157.99; thence along the boundaries of said State Lease No. 1249 the following courses: South 119.58 feet to a point having Coordinates of X = 2,253,808.04 and Y = 154,038.42, East 20.42 feet to a point having Coordinates of X = 2,253,828.46 and Y = 154,038.42 and South 09 degrees 41 minutes 15 seconds East 810.35 feet to a point of intersection with the Louisiana Coastline, as decreed by the Supreme Court of the United States, as determined by a Special Master appointed therein, in litigation styled *United States v. State of Louisiana et al No. 9 Original*, in 1975, having Coordinates of X = 2,253,964.83 and Y = 153,239.62; thence along the boundaries of said Coastline the following: Northwesterly on a straight line to a point having Coordinates of X = 2,253,306 and Y = 154,102 and Southwesterly on a straight line to a point having Coordinates of X = 2,237,721.53 and Y = 150,298.44; thence North 8,944.56 feet to the point of beginning, containing approximately **2,490.52 acres**, all as more particularly outlined on a plat on file in the Office of Mineral Resources, Department of Natural Resources. All bearings, distances and coordinates are based on Louisiana Coordinate System of 1927, (North or South Zone), where applicable.

NOTE: The above description of the Tract nominated for lease has been provided and corrected, where required, exclusively by the nomination party. Any mineral lease selected from this Tract and awarded by the

Louisiana State Mineral and Energy Board shall be without warranty of any kind, either express, implied, or statutory, including, but not limited to, the implied warranties of merchantability and fitness for a particular purpose. Should the mineral lease awarded by the Louisiana State Mineral and Energy Board be subsequently modified, cancelled or abrogated due to the existence of conflicting leases, operating agreements, private claims or other future obligations or conditions which may affect all or any portion of the leased Tract, it shall not relieve the Lessee of the obligation to pay any bonus due thereon to the Louisiana State Mineral and Energy Board, nor shall the Louisiana State Mineral and Energy Board be obligated to refund any consideration paid by the Lessor prior to such modification, cancellation, or abrogation, including, but not limited to, bonuses, rentals and royalties.

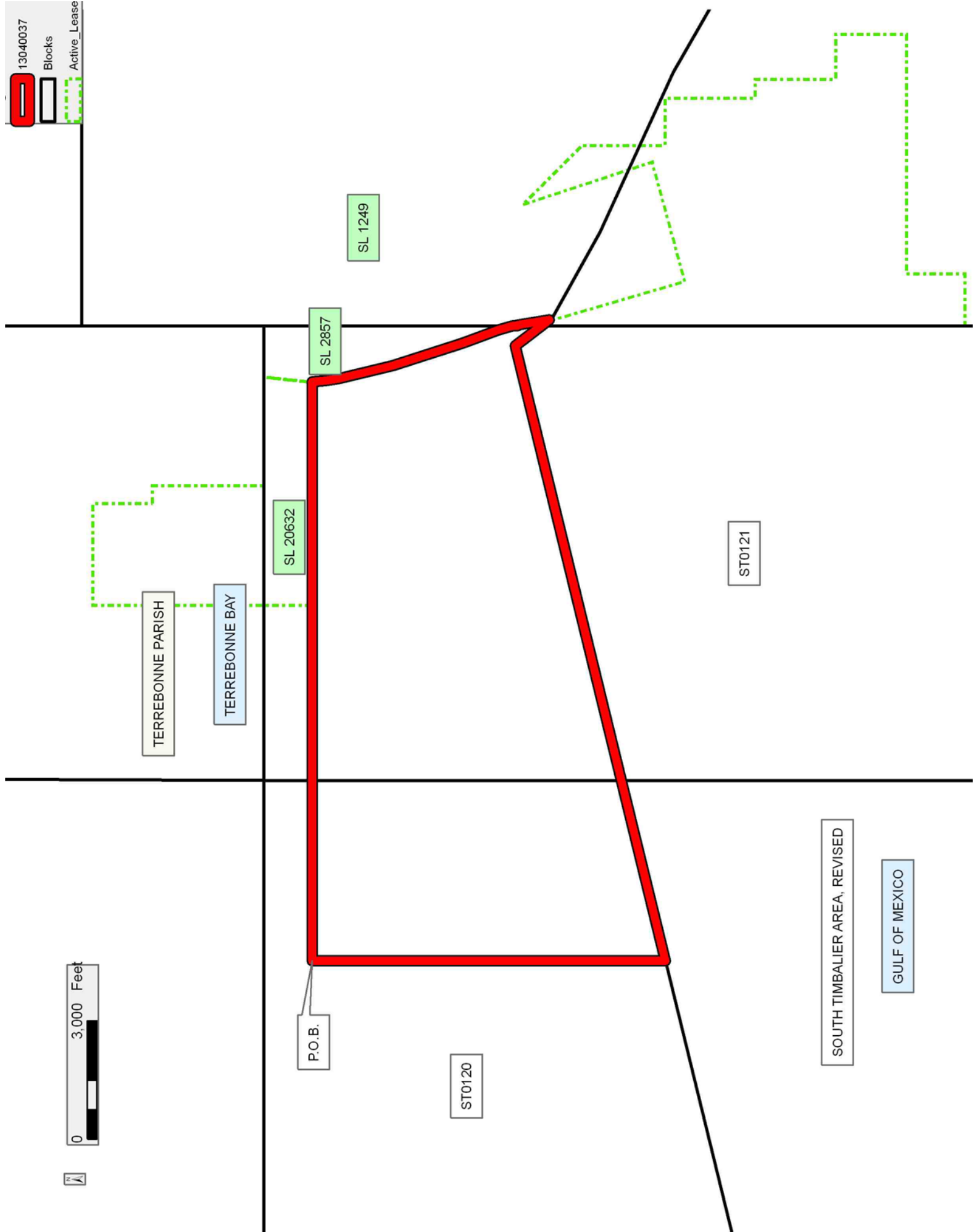
NOTE: The State of Louisiana does hereby reserve, and this lease shall be subject to, the imprescriptible right of surface use in the nature of a servitude in favor of the Department of Natural Resources, including its Offices and Commissions, for the sole purpose of implementing, constructing, servicing and maintaining approved coastal zone management and/or restoration projects. Utilization of any and all rights derived under this lease by the mineral lessee, its agents, successors or assigns, shall not interfere with nor hinder the reasonable surface use by the Department of Natural Resources, its Offices or Commissions, as herein above reserved.

NOTE: It appears, according to our records, that a portion of this Tract is located within the restrictive safety fairway area as set out by the Corps of Engineers, U.S. Army and/or the restrictive anchorage area as set out by the U.S. Coast Guard.

Applicant: CYPRESS ENERGY CORPORATION

Bidder	Cash Payment	Price/Acre	Rental	Oil	Gas	Other

13040037
 Blocks
 Active_Lease



TRACT 43182 - Portion of Block 122, South Timbalier Area, Revised, Terrebonne Parish, Louisiana

All of the lands now or formerly constituting the beds and bottoms of all water bodies of every nature and description as to which title is vested in the State of Louisiana, together with all islands arising therein and other lands formed by accretion or by reliction, where allowed by law, excepting tax adjudicated lands, and not presently under mineral lease on April 10, 2013, situated in Terrebonne Parish, Louisiana, and more particularly described as follows: Beginning at a point on the boundary of State Lease No. 1249, as amended, having Coordinates of X = 2,256,880.21 and Y = 153,910.81; thence along the boundary of said State Lease No. 1249 the following courses: South 45 degrees 00 minutes 00 seconds East 2,129.54 feet to a point having Coordinates of X = 2,258,386.02 and Y = 152,405.00 and South 1,458.02 feet to a point on the Louisiana Coastline, as decreed by the Supreme Court of the United States, as determined by a Special Master appointed therein, in litigation styled *United States v. State of Louisiana et al No. 9 Original*, in 1975, having Coordinates of X = 2,258,386.02 and Y = 150,946.98; thence Northwesterly on a straight line along said Louisiana Coastline to a point on the boundary of said State Lease No. 1249 having Coordinates of X = 2,257,763.82 and Y = 151,230.16; thence North 18 degrees 14 minutes 36 seconds West 2,822.52 feet along the boundary of said State Lease No. 1249 to the point of beginning, containing approximately **41.47 acres**, all as more particularly outlined on a plat on file in the Office of Mineral Resources, Department of Natural Resources. All bearings, distances and coordinates are based on Louisiana Coordinate System of 1927, (North or South Zone), where applicable.

NOTE: The above description of the Tract nominated for lease has been provided and corrected, where required, exclusively by the nomination party. Any mineral lease selected from this Tract and awarded by the Louisiana State Mineral and Energy Board shall be without warranty of any kind, either express, implied, or statutory, including, but not limited to, the implied warranties of merchantability and fitness for a particular purpose. Should the mineral lease awarded by the Louisiana State Mineral and Energy Board be subsequently modified, cancelled or abrogated due to the existence of conflicting leases, operating agreements, private claims or other future obligations or conditions which may affect all or any portion of the leased Tract, it shall not relieve the Lessee of the obligation to pay any bonus due thereon to the Louisiana State Mineral and Energy Board, nor shall the Louisiana State Mineral and Energy Board be obligated to refund any consideration paid by the Lessor prior to such modification, cancellation, or abrogation, including, but not limited to, bonuses, rentals and royalties.

NOTE: The State of Louisiana does hereby reserve, and this lease shall be subject to, the imprescriptible right of surface use in the nature of a servitude in favor of the Department of Natural Resources, including its Offices and Commissions, for the sole purpose of implementing,

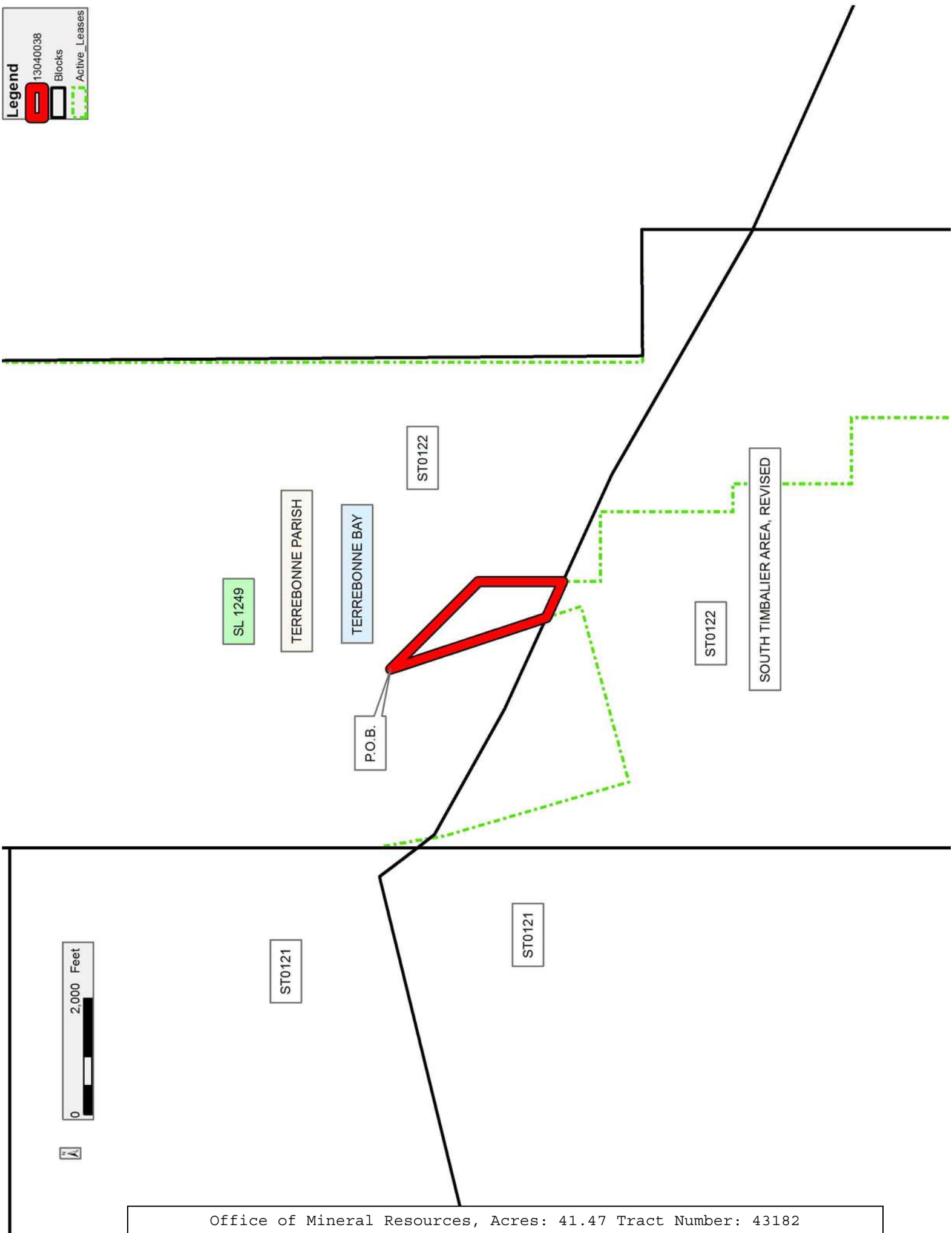
constructing, servicing and maintaining approved coastal zone management and/or restoration projects. Utilization of any and all rights derived under this lease by the mineral lessee, its agents, successors or assigns, shall not interfere with nor hinder the reasonable surface use by the Department of Natural Resources, its Offices or Commissions, as herein above reserved.

Applicant: CYPRESS ENERGY CORPORATION

Bidder	Cash Payment	Price/Acre	Rental	Oil	Gas	Other

Legend

- 13040038
- Blocks
- Active_Leases



TRACT 43183 - Terrebonne Parish, Louisiana

All of the lands now or formerly constituting the beds and bottoms of all water bodies of every nature and description as to which title is vested in the State of Louisiana, together with all islands arising therein and other lands formed by accretion or by reliction, where allowed by law, excepting tax adjudicated lands, and not presently under mineral lease on April 10, 2013, situated in Terrebonne Parish, Louisiana, and more particularly described as follows: Beginning at a point on the East boundary of State Lease No. 301, as amended and the Southwest corner of Tract Ala of State Lease No. 188, as amended having Coordinates of X = 2,273,819.16 and Y = 153,458.16; thence along the boundaries of said Tract Ala of State Lease No. 188 the following courses: East 3,786.33 feet to a point having Coordinates of X = 2,277,605.50 and Y = 153,458.16 and South 1,590.00 feet to a point having Coordinates of X = 2,277,605.50 and Y = 151,868.16; thence South 9,449.51 feet to a point on the Louisiana Coastline, as decreed by the Supreme Court of the United States, as determined by a Special Master appointed therein, in litigation styled *United States v. State of Louisiana et al No. 9 Original*, in 1975, having Coordinates of X = 2,277,605.50 and Y = 142,418.65; thence along the said Coastline the following: Northwesterly on a straight line to a point having Coordinates of X = 2,274,749 and Y = 143,161, Northwesterly on a straight line to a point having Coordinates of X = 2,270,205 and Y = 145,091, Northwesterly on a straight line to a point having Coordinates of X = 2,264,450 and Y = 147,674 and Northwesterly on a straight line to a point of intersection with the East boundary of State Lease No. 1249, as amended having Coordinates of X = 2,264,446.02 and Y = 147,676.30; thence North 1,913.02 feet along the East boundary of said State Lease No. 1249 to a point of intersection with the South boundary of said State Lease No. 301; thence along the boundaries of said State Lease No. 301 the following courses: Easterly, Southeasterly and Northerly to the Southwest corner of Tract Alc of State Lease No. 188 having Coordinates of X = 2,273,875.04 and Y = 145,768.52; thence along the boundaries of said Tract Alc of State Lease No. 188 the following courses: along an arc to the left having a center of X = 2,276,861.00 and Y = 161,325.00 and a radius of 15,840 feet to a point having Coordinates of X = 2,275,075.04 and Y = 145,585.57, North 3,120.00 feet to a point having Coordinates of X = 2,275,075.04 and Y = 148,705.57 and West 1,221.34 feet to its Northwest corner and a point on the East boundary of said State Lease No. 301 having Coordinates of X = 2,273,853.70 and Y = 148,705.57; thence along the boundaries of said State Lease No. 301 the following courses: West 1,000.16 feet to a point having Coordinates of X = 2,272,853.54 and Y = 148,705.57, South 89 degrees 25 minutes 39 seconds West 1,918.64 feet to a point having Coordinates of X = 2,270,935.00 and Y = 148,686.40, North 00 degrees 09 minutes 45 seconds East 951.70 feet to a point having Coordinates of X = 2,270,937.70 and Y = 149,638.10, West 3,574.50 feet to a point having Coordinates of X = 2,267,363.20 and Y = 149,638.10, South 576.00 feet to a point having Coordinates of X = 2,267,363.20 and Y = 149,062.10, North 85 degrees 49 minutes 23 seconds West 1,611.78 feet to a point having Coordinates of X = 2,265,755.70 and Y = 149,179.50, North 2,189.60 feet to a point having

Coordinates of X = 2,265,755.70 and Y = 151,369.10, North 89 degrees 57 minutes 22 seconds East 1,175.10 feet to a point having Coordinates of X = 2,266,930.80 and Y = 151,370.00, North 00 degrees 10 minutes 30 seconds West 425.40 feet to a point having Coordinates of X = 2,266,929.50 and Y = 151,795.40, South 89 degrees 58 minutes 57 seconds East 5,924.04 feet to a point having Coordinates of X = 2,272,853.54 and Y = 151,793.59, North 1,194.16 feet to a point having Coordinates of X = 2,272,853.54 and Y = 152,987.75, East 969.05 feet to a point having Coordinates of X = 2,273,822.59 and Y = 152,987.75 and North 00 degrees 25 minutes 04 seconds West 470.42 feet to the beginning, containing approximately **1,515 acres**, all as more particularly outlined on a plat on file in the Office of Mineral Resources, Department of Natural Resources. All bearings, distances and coordinates are based on Louisiana Coordinate System of 1927, (North or South Zone), where applicable.

NOTE: The above description of the Tract nominated for lease has been provided and corrected, where required, exclusively by the nomination party. Any mineral lease selected from this Tract and awarded by the Louisiana State Mineral and Energy Board shall be without warranty of any kind, either express, implied, or statutory, including, but not limited to, the implied warranties of merchantability and fitness for a particular purpose. Should the mineral lease awarded by the Louisiana State Mineral and Energy Board be subsequently modified, cancelled or abrogated due to the existence of conflicting leases, operating agreements, private claims or other future obligations or conditions which may affect all or any portion of the leased Tract, it shall not relieve the Lessee of the obligation to pay any bonus due thereon to the Louisiana State Mineral and Energy Board, nor shall the Louisiana State Mineral and Energy Board be obligated to refund any consideration paid by the Lessor prior to such modification, cancellation, or abrogation, including, but not limited to, bonuses, rentals and royalties.

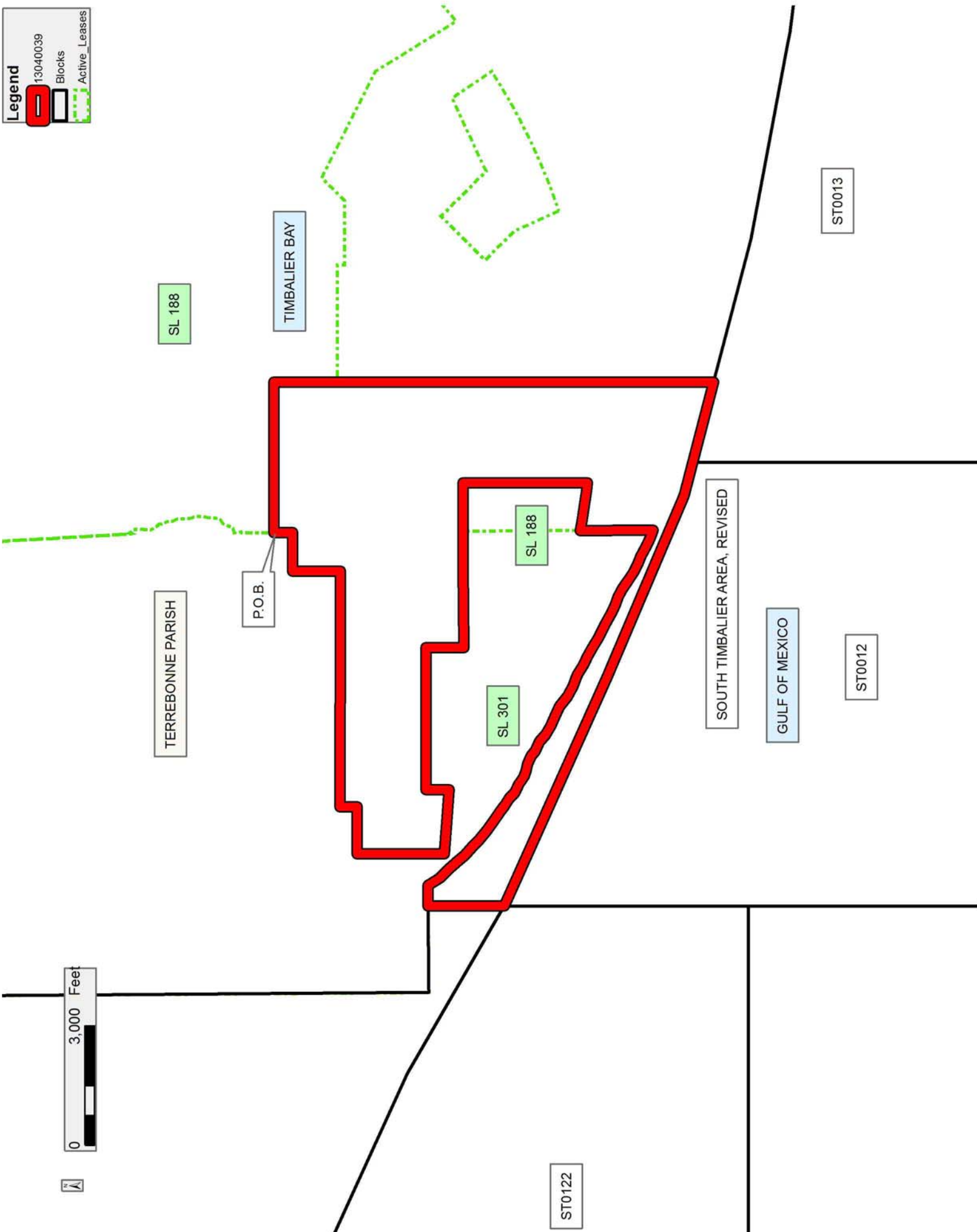
NOTE: The State of Louisiana does hereby reserve, and this lease shall be subject to, the imprescriptible right of surface use in the nature of a servitude in favor of the Department of Natural Resources, including its Offices and Commissions, for the sole purpose of implementing, constructing, servicing and maintaining approved coastal zone management and/or restoration projects. Utilization of any and all rights derived under this lease by the mineral lessee, its agents, successors or assigns, shall not interfere with nor hinder the reasonable surface use by the Department of Natural Resources, its Offices or Commissions, as herein above reserved.

Applicant: CYPRESS ENERGY CORPORATION

Bidder	Cash Payment	Price/Acre	Rental	Oil	Gas	Other

Legend

- 13040039
- Blocks
- Active_Leases



TRACT 43184 - Terrebonne Parish, Louisiana

All of the lands now or formerly constituting the beds and bottoms of all water bodies of every nature and description as to which title is vested in the State of Louisiana, together with all islands arising therein and other lands formed by accretion or by reliction, where allowed by law, excepting tax adjudicated lands, and not presently under mineral lease on April 10, 2013, situated in Terrebonne Parish, Louisiana, and more particularly described as follows: Beginning at a point on the South boundary of Tract Ala of State Lease No. 188, as amended having Coordinates of X = 2,277,605.50 and Y = 151,868.16; thence along the boundaries of said Tract Ala of State Lease No. 188 the following courses: East 2,940.00 feet to a point having Coordinates of X = 2,280,545.50 and Y = 151,868.16, South 180.00 feet to a point having Coordinates of X = 2,280,545.50 and Y = 151,688.16, East 1,620.00 feet to a point having Coordinates of X = 2,282,165.50 and Y = 151,688.16, North 45 degrees 00 minutes 00 seconds East 810.00 feet to a point having Coordinates of X = 2,282,738.26 and Y = 152,260.92, South 63 degrees 11 minutes 59 seconds East 2,992.63 feet to a point having Coordinates of X = 2,285,409.43 and Y = 150,911.60 and South 31 degrees 49 minutes 16 seconds East 1,684.91 feet to a point having Coordinates of X = 2,286,297.83 and Y = 149,479.94; thence South 00 degrees 07 minutes 41 seconds East 3,086.57 feet to a point having Coordinates of X = 2,286,304.73 and Y = 146,393.38; thence South 00 degrees 20 minutes 04 seconds West 3,247.13 feet to a point having Coordinates of X = 2,286,285.77 and Y = 143,146.31; thence South 2,625.29 feet to a point on the Louisiana Coastline, as decreed by the Supreme Court of the United States, as determined by a Special Master appointed therein, in litigation styled *United States v. State of Louisiana et al No. 9 Original*, in 1975, and a point on the North boundary of State Lease No. 17729 having Coordinates of X = 2,286,285.77 and Y = 140,521.02; thence the boundaries of said Coastline and said State Lease No. 17729 the following courses: Northwesterly on a straight line to the Northwest corner of said State Lease No. 17729 having Coordinates of X = 2,285,950.00 and Y = 140,584.62, Northwesterly on a straight line to a point having Coordinates of X = 2,281,202 and Y = 141,484 and Northwesterly on a straight line to a point having Coordinates of X = 2,277,605.50 and Y = 142,418.65; thence North 9,449.51 feet to the point of beginning, **LESS AND EXCEPT** all that portion of State Lease No. 188 Tract Alb, as amended and State Lease No. 2703 Tract 1, as amended which lie entirely within the above described tract, being more fully described as follows: Commencing at a point being the point of beginning of the above described nominated tract having coordinates of X = 2,277,605.50 and Y = 151,868.16; thence South 39 degrees 32 minutes 27 seconds East 4,807.43 feet to a point being the point of beginning of said State Lease No. 188 Tract Alb having Coordinates of X = 2,280,666.04 and Y = 148,160.81; thence along the boundaries of said Tract Alb of State Lease No. 188 the following courses: thence North 45 degrees 00 minutes 00 seconds East 1,561.86 feet to a point having Coordinates of X = 2,281,770.44 and Y = 149,265.21; thence South 45 degrees 00 minutes 00 seconds East 1,600.00 feet to a point having Coordinates of X =

2,282,901.82 and Y = 148,133.84; thence North 65 degrees 10 minutes 43 seconds East 2,026.01 feet to a point having Coordinates of X = 2,284,740.66 and Y = 148,984.34; thence South 34 degrees 00 minutes 42 seconds East 1,198.69 feet to a point having Coordinates of X = 2,285,411.16 and Y = 147,990.72; thence along an arc to the right having a center of X = 2,276,861.00 and Y = 161,325.00 and a radius of 15,840 feet to a point of intersection with the Northern boundary of said Tract 1 of State Lease No. 2703; thence along the boundaries of said Tract 1 of State Lease No. 2703 the following courses: Southeasterly, Southerly, Westerly, Northerly, and Northeasterly to a point of intersection with the South boundary of said Tract Alb of State Lease No. 188; thence along an arc to the right having a center of X = 2,276,861.00 and Y = 161,325.00 and a radius of 15,840 feet to a point having Coordinates of X = 2,281,902.25 and Y = 146,308.39; thence North 24 degrees 22 minutes 46 seconds West 1,237.25 feet to a point having Coordinates of X = 2,281,391.54 and Y = 147,435.31; thence North 45 degrees 00 minutes 00 seconds West 1,026.01 feet to the point of beginning, (This tract includes only waterbottoms claimed and owned by the state and specifically excludes any land which the state may claim or own and to which the mineral rights are vested in the state), containing approximately **1,490 acres**, all as more particularly outlined on a plat on file in the Office of Mineral Resources, Department of Natural Resources. All bearings, distances and coordinates are based on Louisiana Coordinate System of 1927, (North or South Zone), where applicable.

NOTE: The above description of the Tract nominated for lease has been provided and corrected, where required, exclusively by the nomination party. Any mineral lease selected from this Tract and awarded by the Louisiana State Mineral and Energy Board shall be without warranty of any kind, either express, implied, or statutory, including, but not limited to, the implied warranties of merchantability and fitness for a particular purpose. Should the mineral lease awarded by the Louisiana State Mineral and Energy Board be subsequently modified, cancelled or abrogated due to the existence of conflicting leases, operating agreements, private claims or other future obligations or conditions which may affect all or any portion of the leased Tract, it shall not relieve the Lessee of the obligation to pay any bonus due thereon to the Louisiana State Mineral and Energy Board, nor shall the Louisiana State Mineral and Energy Board be obligated to refund any consideration paid by the Lessor prior to such modification, cancellation, or abrogation, including, but not limited to, bonuses, rentals and royalties.

NOTE: The State of Louisiana does hereby reserve, and this lease shall be subject to, the imprescriptible right of surface use in the nature of a servitude in favor of the Department of Natural Resources, including its Offices and Commissions, for the sole purpose of implementing, constructing, servicing and maintaining approved coastal zone management and/or restoration projects. Utilization of any and all rights derived under this lease by the mineral lessee, its agents, successors or assigns,

shall not interfere with nor hinder the reasonable surface use by the Department of Natural Resources, its Offices or Commissions, as herein above reserved.

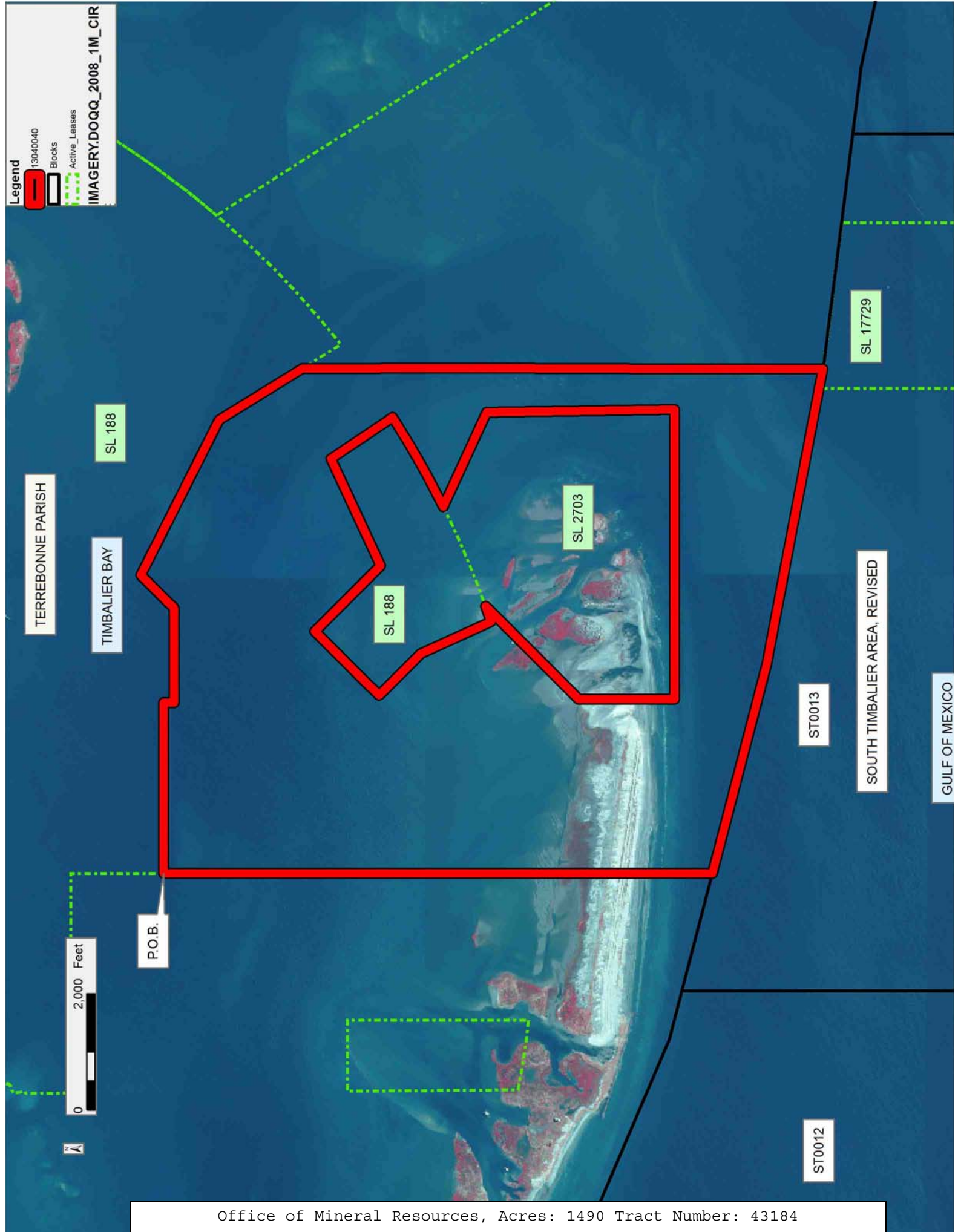
Applicant: CYPRESS ENERGY CORPORATION

Bidder	Cash Payment	Price/Acre	Rental	Oil	Gas	Other

Legend

- 13040040
- Blocks
- Active_Leases

IMAGERY.DOQQ_2008_1M_CIR



TRACT 43185 - Lafourche and Terrebonne Parishes, Louisiana

All of the lands now or formerly constituting the beds and bottoms of all water bodies of every nature and description as to which title is vested in the State of Louisiana, together with all islands arising therein and other lands formed by accretion or by reliction, where allowed by law, excepting tax adjudicated lands, and not presently under mineral lease on April 10, 2013, situated in Lafourche and Terrebonne Parishes, Louisiana, and more particularly described as follows: Beginning at a point on the South boundary of Tract Ala of State Lease No. 188, as amended having Coordinates of X = 2,286,666.93 and Y = 148,885.13; thence along an arc to the left having a center of X = 2,276,861.00 and Y = 161,325.00 and a radius of 15,840 feet to a point of intersection with West boundary of Tract 2 of State Lease No. 2703, as amended; thence Southeasterly approximately 7,077 feet along the West boundary of said Tract 2 of State Lease No. 2703 to a point of intersection with the West boundary of State Lease No. 2826, as amended; thence along the boundaries of said State Lease No. 2826 the following courses: Southerly approximately 261 feet and Easterly approximately 4,747 feet to a point having Coordinates of X = 2,297,482.10 and Y = 144,766.62; thence South 5,927.89 feet to a point on the Louisiana Coastline, as decreed by the Supreme Court of the United States, as determined by a Special Master appointed therein, in litigation styled *United States v. State of Louisiana et al No. 9 Original*, in 1975, having Coordinates of X = 2,297,482.10 and Y = 138,838.73; thence along the boundaries of said Coastline the following: Southwesterly on a straight line to a point having Coordinates of X = 2,296,041 and Y = 138,519, Northwesterly on a straight line to a point having Coordinates of X = 2,295,144 and Y = 138,550, Northwesterly on a straight line to a point having Coordinates of X = 2,294,383 and Y = 138,846, Northwesterly on a straight line to a point having Coordinates of X = 2,293,148 and Y = 139,498, Northwesterly on a straight line to a point having Coordinates of X = 2,291,503 and Y = 139,861, Northwesterly on a straight line to the Northeast corner of State Lease No. 17729 having Coordinates of X = 2,288,800.00 and Y = 140,199.07, Northwesterly on a straight line and along the North boundary of said State Lease No. 17729 to a point having Coordinates of X = 2,286,402 and Y = 140,499 and Northwesterly on a straight line and along the North boundary of said State Lease No. 17729 to a point having Coordinates of X = 2,286,285.77 and Y = 140,521.02; thence North 2,625.29 feet to a point having Coordinates of X = 2,286,285.77 and Y = 143,146.31; thence North 00 degrees 20 minutes 04 seconds East 3,247.13 feet to a point having Coordinates of X = 2,286,304.73 and Y = 146,393.38; thence North 00 degrees 07 minutes 41 seconds West 3,086.57 feet to a point on the South boundary of Tract Ala of State Lease No. 188 having Coordinates of X = 2,286,297.83 and Y = 149,479.94, thence South 31 degrees 49 minutes 16 seconds East 700.02 feet to the beginning, **LESS AND EXCEPT** any portion of State Lease Nos. 188, 2703, and 2826 that may lie within the above described tract, containing approximately **1,911 acres**, all as more particularly outlined on a plat on file in the Office of Mineral Resources, Department of Natural Resources.

All bearings, distances and coordinates are based on Louisiana Coordinate System of 1927, (North or South Zone), where applicable.

NOTE: The above description of the Tract nominated for lease has been provided and corrected, where required, exclusively by the nomination party. Any mineral lease selected from this Tract and awarded by the Louisiana State Mineral and Energy Board shall be without warranty of any kind, either express, implied, or statutory, including, but not limited to, the implied warranties of merchantability and fitness for a particular purpose. Should the mineral lease awarded by the Louisiana State Mineral and Energy Board be subsequently modified, cancelled or abrogated due to the existence of conflicting leases, operating agreements, private claims or other future obligations or conditions which may affect all or any portion of the leased Tract, it shall not relieve the Lessee of the obligation to pay any bonus due thereon to the Louisiana State Mineral and Energy Board, nor shall the Louisiana State Mineral and Energy Board be obligated to refund any consideration paid by the Lessor prior to such modification, cancellation, or abrogation, including, but not limited to, bonuses, rentals and royalties.

NOTE: The State of Louisiana does hereby reserve, and this lease shall be subject to, the imprescriptible right of surface use in the nature of a servitude in favor of the Department of Natural Resources, including its Offices and Commissions, for the sole purpose of implementing, constructing, servicing and maintaining approved coastal zone management and/or restoration projects. Utilization of any and all rights derived under this lease by the mineral lessee, its agents, successors or assigns, shall not interfere with nor hinder the reasonable surface use by the Department of Natural Resources, its Offices or Commissions, as herein above reserved.

Applicant: CYPRESS ENERGY CORPORATION

Bidder	Cash Payment	Price/Acre	Rental	Oil	Gas	Other

13040041
 Blocks
 Active_Lease

