

TRACT 43192 - Lasalle Parish, Louisiana

All of the lands now or formerly constituting the beds and bottoms of all water bodies of every nature and description as to which title is vested in the State of Louisiana, together with all islands arising therein and other lands formed by accretion or by reliction, where allowed by law, excepting tax adjudicated lands, and not presently under mineral lease on May 8, 2013, situated in Lasalle Parish, Louisiana, and more particularly described as follows: Beginning at a point on the North boundary of State Lease No. 18951, as amended, having Coordinates of X = 2,122,818.65 and Y = 322,260.00; thence North 00 degrees 09 minutes 55 seconds West 1,444.16 feet to a point having Coordinates of X = 2,122,814.48 and Y = 323,704.16; thence North 89 degrees 46 minutes 40 seconds East 1,320.00 feet to a point having Coordinates of X = 2,124,134.47 and Y = 323,709.28; thence South 00 degrees 09 minutes 53 seconds East 1,449.29 feet to a point being the Northeast corner of said State Lease No. 18951 having Coordinates of X = 2,124,138.64 and Y = 322,260.00; thence North 90 degrees 00 minutes 00 seconds West 1,319.99 feet along the North boundary of said State Lease No. 18951 to the point of beginning, containing approximately **37 acres**, all as more particularly outlined on a plat on file in the Office of Mineral Resources, Department of Natural Resources. All bearings, distances and coordinates are based on Louisiana Coordinate System of 1927, (North or South Zone), where applicable.

NOTE: The above description of the Tract nominated for lease has been provided and corrected, where required, exclusively by the nomination party. Any mineral lease selected from this Tract and awarded by the Louisiana State Mineral and Energy Board shall be without warranty of any kind, either express, implied, or statutory, including, but not limited to, the implied warranties of merchantability and fitness for a particular purpose. Should the mineral lease awarded by the Louisiana State Mineral and Energy Board be subsequently modified, cancelled or abrogated due to the existence of conflicting leases, operating agreements, private claims or other future obligations or conditions which may affect all or any portion of the leased Tract, it shall not relieve the Lessee of the obligation to pay any bonus due thereon to the Louisiana State Mineral and Energy Board, nor shall the Louisiana State Mineral and Energy Board be obligated to refund any consideration paid by the Lessor prior to such modification, cancellation, or abrogation, including, but not limited to, bonuses, rentals and royalties.

NOTE: The Department of Wildlife and Fisheries, as part of its overall wildlife management plan in the area, initiates an annual drawdown of water in Catahoula Lake which may affect operations for mineral development by State mineral lessees in Catahoula Lake. Accordingly, any mineral lessee of the State in Catahoula Lake should check with the Department of Wildlife and Fisheries for the water drawdown dates before initiating any operations which may be affected by same.

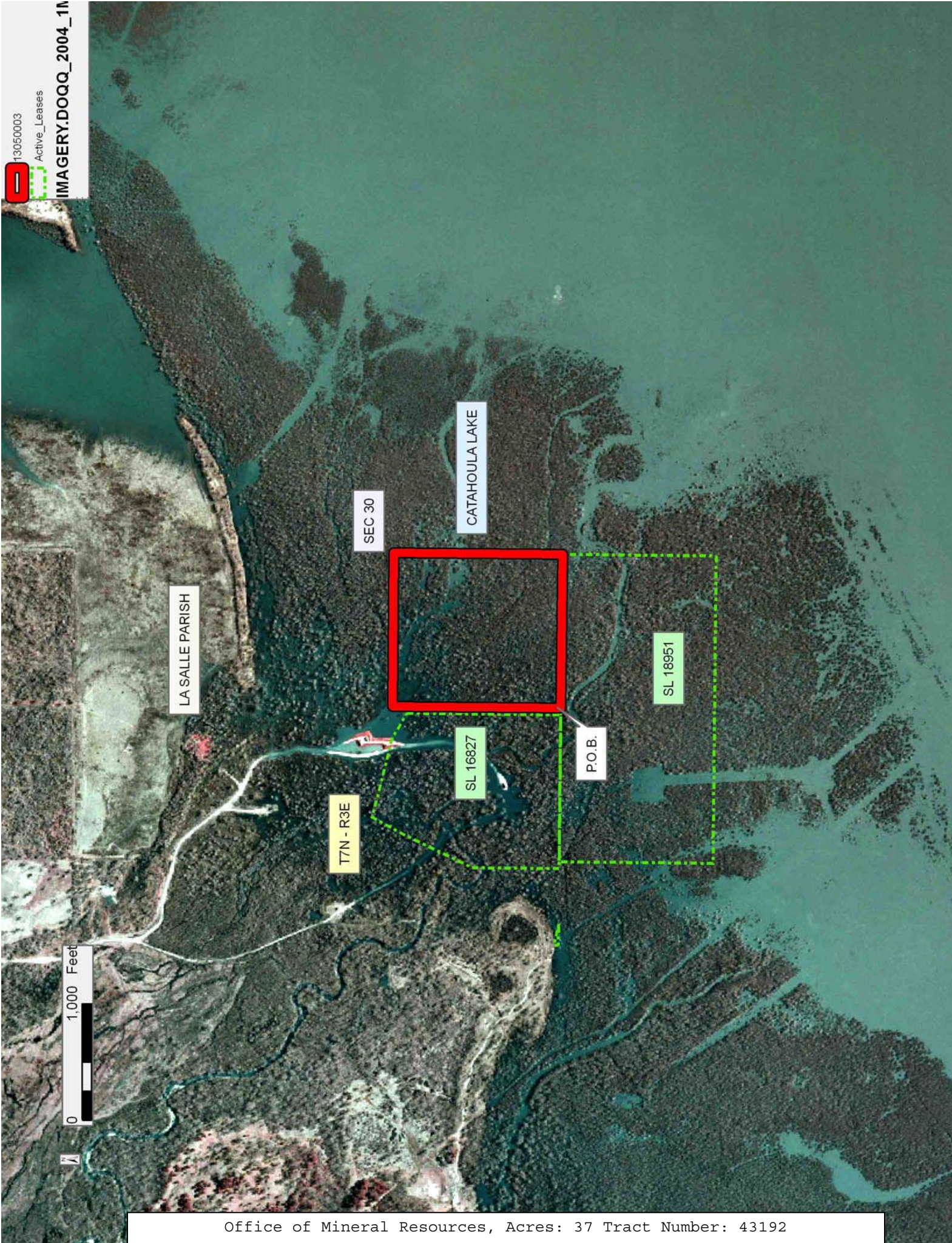
Applicant: OLD CREEK PETROLEUM, LLC

Bidder	Cash Payment	Price/Acre	Rental	Oil	Gas	Other

13050003

Active_Leases

IMAGERY.DOQQ_2004_1N



TRACT 43193 - Iberville and St. Martin Parishes, Louisiana

All of the lands now or formerly constituting the beds and bottoms of all water bodies of every nature and description as to which title is vested in the State of Louisiana, together with all islands arising therein and other lands formed by accretion or by reliction, where allowed by law, excepting tax adjudicated lands, and not presently under mineral lease on May 8, 2013, situated in Iberville and St. Martin Parishes, Louisiana, and more particularly described as follows: Beginning at a point having Coordinates of X = 1,912,321.00 and Y = 599,652.00; thence East 18,480.00 feet to a point having Coordinates of X = 1,930,801.00 and Y = 599,652.00; thence South 18,480.00 feet to a point having Coordinates of X = 1,930,801.00 and Y = 581,172.00; thence West approximately 4,026 feet to a point on the Eastern boundary of State Lease No. 2024, as amended; thence along the boundary of said State Lease No. 2024, as amended, the following courses: Northerly approximately 6,897 feet to a point and Westerly approximately 14,556 feet to the point of intersection with a North-South line having a Coordinate of X = 1,912,321.00; thence North approximately 11,371 feet to the point of beginning, **LESS AND EXCEPT** that portion, if any, of State Lease No. 2024, as amended, which may lie within the above described tract, (This lease includes only waterbottoms claimed and owned by the state and specifically excludes any land which the state may claim or own and to which the mineral rights are vested in the state), containing approximately **344 acres**, all as more particularly outlined on a plat on file in the Office of Mineral Resources, Department of Natural Resources. All bearings, distances and coordinates are based on Louisiana Coordinate System of 1927, (North or South Zone), where applicable.

NOTE: The above description of the Tract nominated for lease has been provided and corrected, where required, exclusively by the nomination party. Any mineral lease selected from this Tract and awarded by the Louisiana State Mineral and Energy Board shall be without warranty of any kind, either express, implied, or statutory, including, but not limited to, the implied warranties of merchantability and fitness for a particular purpose. Should the mineral lease awarded by the Louisiana State Mineral and Energy Board be subsequently modified, cancelled or abrogated due to the existence of conflicting leases, operating agreements, private claims or other future obligations or conditions which may affect all or any portion of the leased Tract, it shall not relieve the Lessee of the obligation to pay any bonus due thereon to the Louisiana State Mineral and Energy Board, nor shall the Louisiana State Mineral and Energy Board be obligated to refund any consideration paid by the Lessor prior to such modification, cancellation, or abrogation, including, but not limited to, bonuses, rentals and royalties.

NOTE: This acreage is entirely within the boundary of the Atchafalaya Basin Legal Area.

Applicant: THEOPHILUS OIL, GAS & LAND SERVICES, LLC

Bidder	Cash Payment	Price/Acre	Rental	Oil	Gas	Other

Legend

13050035

Active_Leases

Counties

IMAGERY.DOQQ_2008_1M_CIR

T9S - R9E

T8S - R9E

IBERVILLE PARISH

WHISKEY BAY PILOT CHANNEL

P.O.B.

SL 2024

ST MARTIN PARISH

0 4,000 Feet



TRACT 43194 - Iberville and St. Martin Parishes, Louisiana

All of the lands now or formerly constituting the beds and bottoms of all water bodies of every nature and description as to which title is vested in the State of Louisiana, together with all islands arising therein and other lands formed by accretion or by reliction, where allowed by law, excepting tax adjudicated lands, and not presently under mineral lease on May 8, 2013, situated in Iberville and St. Martin Parishes, Louisiana, and more particularly described as follows: Beginning at a point having Coordinates of X = 1,893,841.00 and Y = 599,652.00; thence East 18,480.00 feet to a point having Coordinates of X = 1,912,321.00 and Y = 599,652.00; thence South approximately 11,371 feet to a point on the Northern boundary of State Lease No. 2024, as amended; thence along the boundary of said State Lease No. 2024, as amended, the following courses: Westerly approximately 7,488 feet to a point and Southerly approximately 7,219 feet to the point of intersection with an East-West line having a Coordinate of Y = 581,172.00; thence West approximately 11,007 feet to a point having Coordinates of X = 1,893,841.00 and Y = 581,172.00; thence North 18,480.00 feet to the point of beginning, **LESS AND EXCEPT** that portion, if any, of State Lease No. 2024, as amended, which may lie within the above described tract, and **LESS AND EXCEPT** any right, title, and interest in lands owned by and not under lease from the State of Louisiana, on behalf of the St. Martin Parish School Board, situated in Section 16, Township 9 South, Range 8 East, St. Martin Parish, Louisiana, contained within the above described tract, (This lease includes only waterbottoms claimed and owned by the state and specifically excludes any land which the state may claim or own and to which the mineral rights are vested in the state), containing approximately **1,054 acres**, all as more particularly outlined on a plat on file in the Office of Mineral Resources, Department of Natural Resources. All bearings, distances and coordinates are based on Louisiana Coordinate System of 1927, (North or South Zone), where applicable.

NOTE: The above description of the Tract nominated for lease has been provided and corrected, where required, exclusively by the nomination party. Any mineral lease selected from this Tract and awarded by the Louisiana State Mineral and Energy Board shall be without warranty of any kind, either express, implied, or statutory, including, but not limited to, the implied warranties of merchantability and fitness for a particular purpose. Should the mineral lease awarded by the Louisiana State Mineral and Energy Board be subsequently modified, cancelled or abrogated due to the existence of conflicting leases, operating agreements, private claims or other future obligations or conditions which may affect all or any portion of the leased Tract, it shall not relieve the Lessee of the obligation to pay any bonus due thereon to the Louisiana State Mineral and Energy Board, nor shall the Louisiana State Mineral and Energy Board be obligated to refund any consideration paid by the Lessor prior to such modification, cancellation, or abrogation, including, but not limited to, bonuses, rentals and royalties.

NOTE: This acreage is entirely within the boundary of the Atchafalaya Basin Legal Area.

Applicant: THEOPHILUS OIL, GAS & LAND SERVICES, LLC

Bidder	Cash Payment	Price/Acre	Rental	Oil	Gas	Other

Legend

13050034



Active_Leases

IMAGERY.DOQQ_2008_1M_CIR

ST MARTIN PARISH

T8S - R8E

BUTTE LAROSE CUTOFF

P.O.B.

0 4,000 Feet

IBERVILLE PARISH

OSCA BAY

UPPER GRAND RIVER

SL 2024

T9S - R8E

TRACT 43195 - Iberville and St. Martin Parishes, Louisiana

All of the lands now or formerly constituting the beds and bottoms of all water bodies of every nature and description as to which title is vested in the State of Louisiana, together with all islands arising therein and other lands formed by accretion or by reliction, where allowed by law, excepting tax adjudicated lands, and not presently under mineral lease on May 8, 2013, situated in Iberville and St. Martin Parishes, Louisiana, and more particularly described as follows: Beginning at a point having Coordinates of X = 1,930,801.00 and Y = 581,172.00; thence South 18,164.55 feet to a point having Coordinates of X = 1,930,801.00 and Y = 563,007.45; thence West 18,480.00 feet to a point having Coordinates of X = 1,912,321.00 and Y = 563,007.45; thence North approximately 14,803 feet to a point on the Southern boundary of State Lease No. 2024, as amended; thence along the boundary of said State Lease No. 2024, as amended, the following courses: Easterly approximately 6,190 feet to a point; Southerly approximately 3,932 feet to a point; Easterly approximately 2,532 feet to a point; Southerly approximately 6,831 feet to a point; Easterly approximately 6,003 feet to a point; Northerly approximately 5,376 feet to a point; Northwesterly approximately 1,357 feet to a point; and Northerly approximately 7,432 feet to the point of intersection with an East-West line having a Coordinate of Y = 581,172.00; thence East approximately 4,026 feet to the point of beginning, **LESS AND EXCEPT** that portion, if any, of State Lease No. 2024, which may lie within the above described tract, (This lease includes only waterbottoms claimed and owned by the state and specifically excludes any land which the state may claim or own and to which the mineral rights are vested in the state), containing approximately **364 acres**, all as more particularly outlined on a plat on file in the Office of Mineral Resources, Department of Natural Resources. All bearings, distances and coordinates are based on Louisiana Coordinate System of 1927, (North or South Zone), where applicable.

NOTE: The above description of the Tract nominated for lease has been provided and corrected, where required, exclusively by the nomination party. Any mineral lease selected from this Tract and awarded by the Louisiana State Mineral and Energy Board shall be without warranty of any kind, either express, implied, or statutory, including, but not limited to, the implied warranties of merchantability and fitness for a particular purpose. Should the mineral lease awarded by the Louisiana State Mineral and Energy Board be subsequently modified, cancelled or abrogated due to the existence of conflicting leases, operating agreements, private claims or other future obligations or conditions which may affect all or any portion of the leased Tract, it shall not relieve the Lessee of the obligation to pay any bonus due thereon to the Louisiana State Mineral and Energy Board, nor shall the Louisiana State Mineral and Energy Board be obligated to refund any consideration paid by the Lessor prior to such modification, cancellation, or abrogation, including, but not limited to, bonuses, rentals and royalties.

NOTE: This acreage is entirely within the boundary of the Atchafalaya Basin Legal Area.

Applicant: THEOPHILUS OIL, GAS & LAND SERVICES, LLC

Bidder	Cash Payment	Price/Acre	Rental	Oil	Gas	Other

Legend

- 13050037
- Active_Leases
- Counties

IMAGERY.DOQQ_2008_1M_CIR

IBERVILLE PARISH

P.O.B.

T9S - R9E

UPPER GRAND RIVER

ATCHAFALAYA RIVER

SL 2024

LAKE LONG

ST MARTIN PARISH

T9S - R8E



TRACT 43196 - Iberville and St. Martin Parishes, Louisiana

All of the lands now or formerly constituting the beds and bottoms of all water bodies of every nature and description as to which title is vested in the State of Louisiana, together with all islands arising therein and other lands formed by accretion or by reliction, where allowed by law, excepting tax adjudicated lands, and not presently under mineral lease on May 8, 2013, situated in Iberville and St. Martin Parishes, Louisiana, and more particularly described as follows: Beginning at a point having Coordinates of X = 1,930,801.00 and Y = 581,172.00; thence East 6,922.00 feet to a point having Coordinates of X = 1,937,723.00 and Y = 581,172.00; thence South 18,164.55 feet to a point having Coordinates of X = 1,937,723.00 and Y = 563,007.45; thence West 6,922.00 feet to a point having Coordinates of X = 1,930,801.00 and Y = 563,007.45; thence North 18,164.55 feet to the point of beginning, (This lease includes only waterbottoms claimed and owned by the state and specifically excludes any land which the state may claim or own and to which the mineral rights are vested in the state), containing approximately **76 acres**, all as more particularly outlined on a plat on file in the Office of Mineral Resources, Department of Natural Resources. All bearings, distances and coordinates are based on Louisiana Coordinate System of 1927, (North or South Zone), where applicable.

NOTE: The above description of the Tract nominated for lease has been provided and corrected, where required, exclusively by the nomination party. Any mineral lease selected from this Tract and awarded by the Louisiana State Mineral and Energy Board shall be without warranty of any kind, either express, implied, or statutory, including, but not limited to, the implied warranties of merchantability and fitness for a particular purpose. Should the mineral lease awarded by the Louisiana State Mineral and Energy Board be subsequently modified, cancelled or abrogated due to the existence of conflicting leases, operating agreements, private claims or other future obligations or conditions which may affect all or any portion of the leased Tract, it shall not relieve the Lessee of the obligation to pay any bonus due thereon to the Louisiana State Mineral and Energy Board, nor shall the Louisiana State Mineral and Energy Board be obligated to refund any consideration paid by the Lessor prior to such modification, cancellation, or abrogation, including, but not limited to, bonuses, rentals and royalties.

NOTE: This acreage is entirely within the boundary of the Atchafalaya Basin Legal Area.

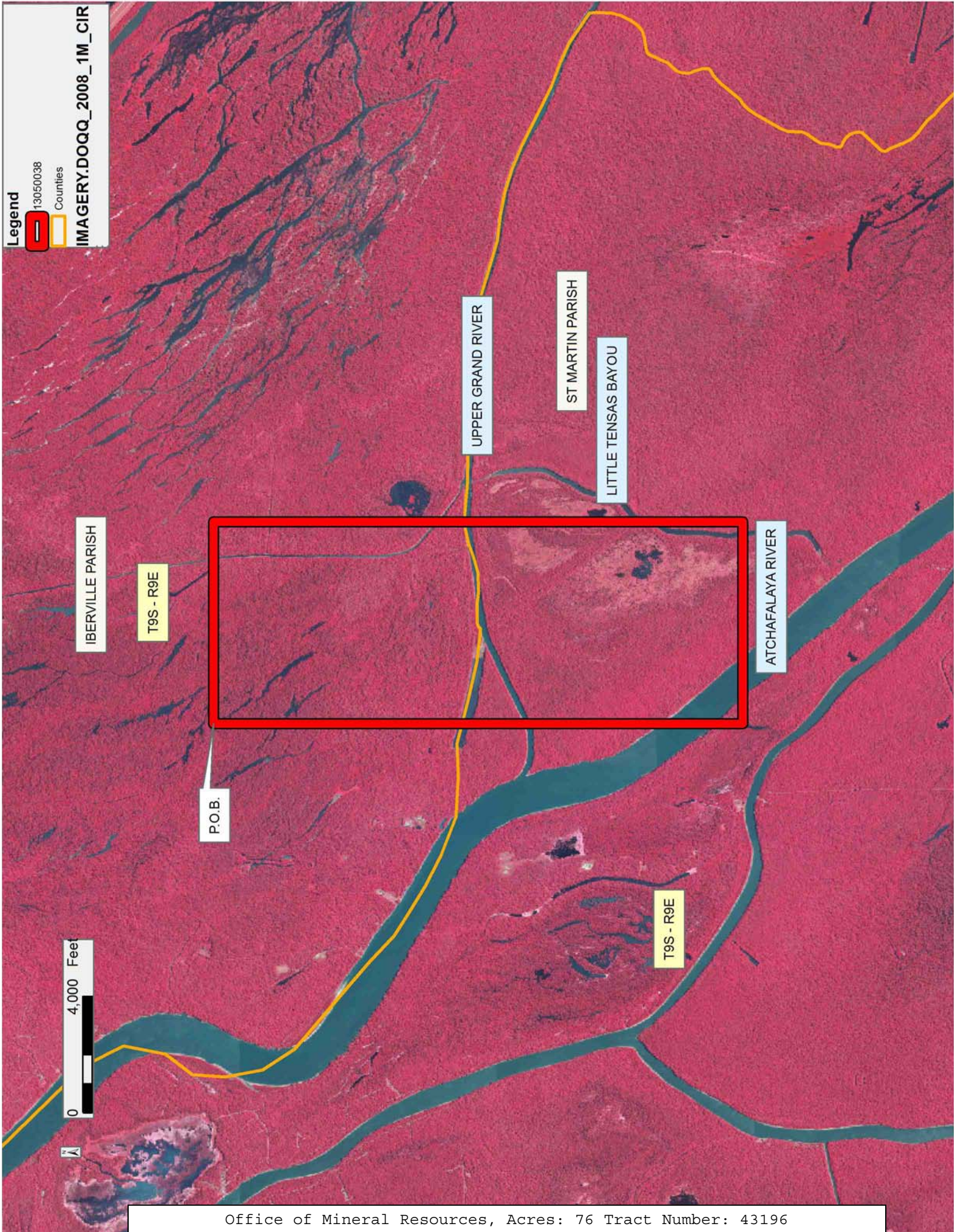
Applicant: THEOPHILUS OIL, GAS & LAND SERVICES, LLC

Bidder	Cash Payment	Price/Acre	Rental	Oil	Gas	Other

Legend

- 13050038
- Countries

IMAGERY.DOQQ_2008_1M_CIR



TRACT 43197 - St. Martin Parish, Louisiana

All of the lands now or formerly constituting the beds and bottoms of all water bodies of every nature and description as to which title is vested in the State of Louisiana, together with all islands arising therein and other lands formed by accretion or by reliction, where allowed by law, excepting tax adjudicated lands, and not presently under mineral lease on May 8, 2013, situated in St. Martin Parish, Louisiana, and more particularly described as follows: Beginning at a point having Coordinates of X = 1,893,841.00 and Y = 581,172.00; thence East approximately 11,007 feet to a point on the Western boundary of State Lease No. 2024, as amended; thence along the boundary of said State Lease No. 2024, as amended, the following courses: Southerly approximately 3,375 feet to a point and Easterly 7,467 feet to the point of intersection with a North-South line having a Coordinate of X = 1,912,321.00; thence South approximately 14,803 feet to a point having Coordinates of X = 1,912,321.00 and Y = 563,007.45; thence West 18,480.00 feet to a point having Coordinates of X = 1,893,841.00 and Y = 563,007.45; thence North approximately 6,173 feet to a point on the Southern boundary of State Lease No. 3435; thence along the boundary of said State Lease No. 3435 the following courses: Northeasterly, Northerly and Northwesterly to the point of intersection with a North-South line having Coordinate of X = 1,893,841.00; thence North approximately 9,314 feet to the point of beginning, **LESS AND EXCEPT** that portion, if any, of State Lease No. 2024, as amended, and State Lease No. 3435, which may lie within the above described tract, and **LESS AND EXCEPT** any right, title, and interest in lands owned by and not under lease from the State of Louisiana, on behalf of the St. Martin Parish School Board, situated in Section 16, Township 9 South, Range 8 East, St. Martin Parish, Louisiana, contained within the above described tract, containing approximately **23 acres**, all as more particularly outlined on a plat on file in the Office of Mineral Resources, Department of Natural Resources. All bearings, distances and coordinates are based on Louisiana Coordinate System of 1927, (North or South Zone), where applicable.

NOTE: The above description of the Tract nominated for lease has been provided and corrected, where required, exclusively by the nomination party. Any mineral lease selected from this Tract and awarded by the Louisiana State Mineral and Energy Board shall be without warranty of any kind, either express, implied, or statutory, including, but not limited to, the implied warranties of merchantability and fitness for a particular purpose. Should the mineral lease awarded by the Louisiana State Mineral and Energy Board be subsequently modified, cancelled or abrogated due to the existence of conflicting leases, operating agreements, private claims or other future obligations or conditions which may affect all or any portion of the leased Tract, it shall not relieve the Lessee of the obligation to pay any bonus due thereon to the Louisiana State Mineral and Energy Board, nor shall the Louisiana State Mineral and Energy Board be obligated to refund any consideration paid by the Lessor prior to such

modification, cancellation, or abrogation, including, but not limited to, bonuses, rentals and royalties.

NOTE: This acreage is entirely within the boundary of the Atchafalaya Basin Legal Area.

Applicant: THEOPHILUS OIL, GAS & LAND SERVICES, LLC

Bidder	Cash Payment	Price/Acre	Rental	Oil	Gas	Other

Legend

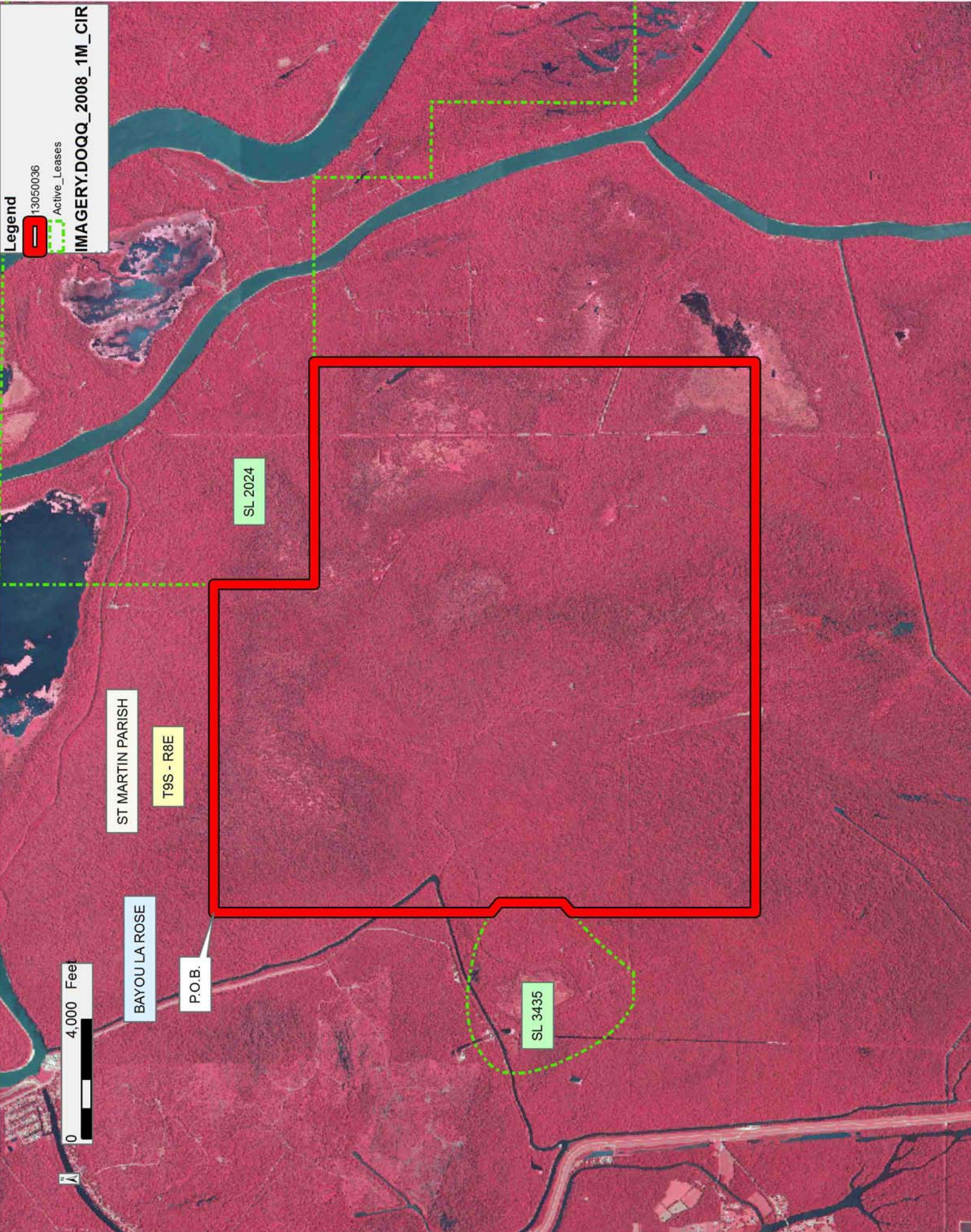
13050036



Active_Leases



IMAGERY.DOQQ_2008_1M_CIR



TRACT 43198 - St. Martin Parish, Louisiana

All of the lands now or formerly constituting the beds and bottoms of all water bodies of every nature and description as to which title is vested in the State of Louisiana, together with all islands arising therein and other lands formed by accretion or by reliction, where allowed by law, excepting tax adjudicated lands, and not presently under mineral lease on May 8, 2013, situated in St. Martin Parish, Louisiana, and more particularly described as follows: Beginning at a point having Coordinates of X = 1,926,808.00 and Y = 563,007.45; thence East 10,915.00 feet to a point having Coordinates of X = 1,937,723.00 and Y = 563,007.45; thence South 3,698.45 feet to the Northeast corner of State Lease No. 20556 having Coordinates of X = 1,937,723.00 and Y = 559,309.00; thence along the boundary of said State Lease No. 20556 the following courses: West 5,332.00 feet to a point having Coordinates of X = 1,932,391.00 and Y = 559,309.00 and South 1,430.00 feet to the Northeast corner of State Lease No. 20555 having Coordinates of X = 1,932,391.00 and Y = 557,879.00; thence along the boundary of said State Lease No. 20555 the following courses: West 2,768.00 feet to a point having Coordinates of X = 1,929,623.00 and Y = 557,879.00 and South 1,430.00 feet to the Northwest corner of State Lease No. 20557 having Coordinates of X = 1,929,623.00 and Y = 556,449.00; thence South 2,860.00 feet along the West line of said State Lease No. 20557 to a point on the North line of State Lease No. 20965 having Coordinates of X = 1,929,623.00 and Y = 553,589.00; thence West 2,815.00 feet along the North line of said State Lease No. 20965 to its Northwest corner having Coordinates of X = 1,926,808.00 and Y = 553,589.00; thence North 9,418.45 feet to the point of beginning, (This lease includes only waterbottoms claimed and owned by the state and specifically excludes any land which the state may claim or own and to which the mineral rights are vested in the state), containing approximately **215 acres**, all as more particularly outlined on a plat on file in the Office of Mineral Resources, Department of Natural Resources. All bearings, distances and coordinates are based on Louisiana Coordinate System of 1927, (North or South Zone), where applicable.

NOTE: The above description of the Tract nominated for lease has been provided and corrected, where required, exclusively by the nomination party. Any mineral lease selected from this Tract and awarded by the Louisiana State Mineral and Energy Board shall be without warranty of any kind, either express, implied, or statutory, including, but not limited to, the implied warranties of merchantability and fitness for a particular purpose. Should the mineral lease awarded by the Louisiana State Mineral and Energy Board be subsequently modified, cancelled or abrogated due to the existence of conflicting leases, operating agreements, private claims or other future obligations or conditions which may affect all or any portion of the leased Tract, it shall not relieve the Lessee of the obligation to pay any bonus due thereon to the Louisiana State Mineral and Energy Board, nor shall the Louisiana State Mineral and Energy Board be obligated to refund any consideration paid by the Lessor prior to such

modification, cancellation, or abrogation, including, but not limited to, bonuses, rentals and royalties.

NOTE: This acreage is entirely within the boundary of the Atchafalaya Basin Legal Area.

Applicant: THEOPHILUS OIL, GAS & LAND SERVICES, LLC

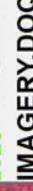
Bidder	Cash Payment	Price/Acre	Rental	Oil	Gas	Other

Legend

13050041



Active_Leases



IMAGERY.DOQQ_2008_1M_CIR

0 3,000 Feet



ST MARTIN PARISH

ATCHAFALAYA RIVER

LITTLE TENSAS BAYOU

SPLICE ISLAND CHUTE

P.O.B.

T10S - R9E

T9S - R9E

SL 20556

LAKE MONGOULOIS

SL 20555

SL 20557

SL 20965

TRACT 43199 - St. Martin Parish, Louisiana

All of the lands now or formerly constituting the beds and bottoms of all water bodies of every nature and description as to which title is vested in the State of Louisiana, together with all islands arising therein and other lands formed by accretion or by reliction, where allowed by law, excepting tax adjudicated lands, and not presently under mineral lease on May 8, 2013, situated in St. Martin Parish, Louisiana, and more particularly described as follows: Beginning at a point having Coordinates of X = 1,926,808.00 and Y = 563,007.45; thence South 9,418.45 feet to the Northwest corner of State Lease No. 20965 having Coordinates of X = 1,926,808.00 and Y = 553,589.00; thence South 2,860.00 feet along the West line of said State Lease No. 20965 to its Southwest corner having Coordinates of X = 1,926,808.00 and Y = 550,729.00; thence West 14,487.00 feet to a point having Coordinates of X = 1,912,321.00 and Y = 550,729.00; thence North 12,278.45 feet to a point having Coordinates of X = 1,912,321.00 and Y = 563,007.45; thence East 14,487.00 feet to the point of beginning, (This lease includes only waterbottoms claimed and owned by the state and specifically excludes any land which the state may claim or own and to which the mineral rights are vested in the state), containing approximately **789 acres**, all as more particularly outlined on a plat on file in the Office of Mineral Resources, Department of Natural Resources. All bearings, distances and coordinates are based on Louisiana Coordinate System of 1927, (North or South Zone), where applicable.

NOTE: The above description of the Tract nominated for lease has been provided and corrected, where required, exclusively by the nomination party. Any mineral lease selected from this Tract and awarded by the Louisiana State Mineral and Energy Board shall be without warranty of any kind, either express, implied, or statutory, including, but not limited to, the implied warranties of merchantability and fitness for a particular purpose. Should the mineral lease awarded by the Louisiana State Mineral and Energy Board be subsequently modified, cancelled or abrogated due to the existence of conflicting leases, operating agreements, private claims or other future obligations or conditions which may affect all or any portion of the leased Tract, it shall not relieve the Lessee of the obligation to pay any bonus due thereon to the Louisiana State Mineral and Energy Board, nor shall the Louisiana State Mineral and Energy Board be obligated to refund any consideration paid by the Lessor prior to such modification, cancellation, or abrogation, including, but not limited to, bonuses, rentals and royalties.

NOTE: This acreage is entirely within the boundary of the Atchafalaya Basin Legal Area.

Applicant: THEOPHILUS OIL, GAS & LAND SERVICES, LLC

Bidder	Cash Payment	Price/Acre	Rental	Oil	Gas	Other

Legend

13050040



Active_Leases



IMAGERY.DOQQ_2008_1M_CIR

0 3,000 Feet



T9S - R9E

P.O.B.

ST MARTIN PARISH

LAKE LONG

SPLICE ISLAND CHUTE

SL 20965

T10S - R8E

TRACT 43200 - St. Martin Parish, Louisiana

All of the lands now or formerly constituting the beds and bottoms of all water bodies of every nature and description as to which title is vested in the State of Louisiana, together with all islands arising therein and other lands formed by accretion or by reliction, where allowed by law, excepting tax adjudicated lands, and not presently under mineral lease on May 8, 2013, situated in St. Martin Parish, Louisiana, and more particularly described as follows: Beginning at a point having Coordinates of X = 1,893,841.00 and Y = 563,007.45; thence East 18,480.00 feet to a point having Coordinates of X = 1,912,321.00 and Y = 563,007.45; thence South 12,278.45 feet to a point having Coordinates of X = 1,912,321.00 and Y = 550,729.00; thence West 18,480.00 feet to a point having Coordinates of X = 1,893,841.00 and Y = 550,729.00; thence North 12,278.45 feet to the point of beginning, (This lease includes only waterbottoms claimed and owned by the state and specifically excludes any land which the state may claim or own and to which the mineral rights are vested in the state), containing approximately **12 acres**, all as more particularly outlined on a plat on file in the Office of Mineral Resources, Department of Natural Resources. All bearings, distances and coordinates are based on Louisiana Coordinate System of 1927, (North or South Zone), where applicable.

NOTE: The above description of the Tract nominated for lease has been provided and corrected, where required, exclusively by the nomination party. Any mineral lease selected from this Tract and awarded by the Louisiana State Mineral and Energy Board shall be without warranty of any kind, either express, implied, or statutory, including, but not limited to, the implied warranties of merchantability and fitness for a particular purpose. Should the mineral lease awarded by the Louisiana State Mineral and Energy Board be subsequently modified, cancelled or abrogated due to the existence of conflicting leases, operating agreements, private claims or other future obligations or conditions which may affect all or any portion of the leased Tract, it shall not relieve the Lessee of the obligation to pay any bonus due thereon to the Louisiana State Mineral and Energy Board, nor shall the Louisiana State Mineral and Energy Board be obligated to refund any consideration paid by the Lessor prior to such modification, cancellation, or abrogation, including, but not limited to, bonuses, rentals and royalties.

NOTE: This acreage is entirely within the boundary of the Atchafalaya Basin Legal Area.

Applicant: THEOPHILUS OIL, GAS & LAND SERVICES, LLC

Bidder	Cash Payment	Price/Acre	Rental	Oil	Gas	Other

Legend

13050039

IMAGERY.DOQQ_2008_1M_CIR

ST MARTIN PARISH

T9S - R8E

BAYOU LA ROSE



CROCODILE BAYOU

P.O.B.

T10S - R8E



TRACT 43201 - St. Bernard Parish, Louisiana

All of the lands now or formerly constituting the beds and bottoms of all water bodies of every nature and description as to which title is vested in the State of Louisiana, together with all islands arising therein and other lands formed by accretion or by reliction, where allowed by law, excepting tax adjudicated lands, and not presently under mineral lease on May 8, 2013, situated in St. Bernard Parish, Louisiana, and more particularly described as follows: Beginning at a point having Coordinates of X = 2,593,321.00 and Y = 498,043.00; thence East 15,580.00 feet to a point having Coordinates of X = 2,608,901.00 and Y = 498,043.00; thence South 6,193.00 feet to a point having Coordinates of X = 2,608,901.00 and Y = 491,850.00; thence West 15,580.00 feet to a point having Coordinates of X = 2,593,321.00 and Y = 491,850.00; thence North 6,193.00 feet to the point of beginning, containing approximately **1,854 acres**, all as more particularly outlined on a plat on file in the Office of Mineral Resources, Department of Natural Resources. All bearings, distances and coordinates are based on Louisiana Coordinate System of 1927, (North or South Zone), where applicable.

NOTE: The above description of the Tract nominated for lease has been provided and corrected, where required, exclusively by the nomination party. Any mineral lease selected from this Tract and awarded by the Louisiana State Mineral and Energy Board shall be without warranty of any kind, either express, implied, or statutory, including, but not limited to, the implied warranties of merchantability and fitness for a particular purpose. Should the mineral lease awarded by the Louisiana State Mineral and Energy Board be subsequently modified, cancelled or abrogated due to the existence of conflicting leases, operating agreements, private claims or other future obligations or conditions which may affect all or any portion of the leased Tract, it shall not relieve the Lessee of the obligation to pay any bonus due thereon to the Louisiana State Mineral and Energy Board, nor shall the Louisiana State Mineral and Energy Board be obligated to refund any consideration paid by the Lessor prior to such modification, cancellation, or abrogation, including, but not limited to, bonuses, rentals and royalties.

NOTE: The State of Louisiana does hereby reserve, and this lease shall be subject to, the imprescriptible right of surface use in the nature of a servitude in favor of the Department of Natural Resources, including its Offices and Commissions, for the sole purpose of implementing, constructing, servicing and maintaining approved coastal zone management and/or restoration projects. Utilization of any and all rights derived under this lease by the mineral lessee, its agents, successors or assigns, shall not interfere with nor hinder the reasonable surface use by the Department of Natural Resources, its Offices or Commissions, as herein above reserved.

Applicant: CRESCENT RESOURCES, LLC

Bidder	Cash Payment	Price/Acre	Rental	Oil	Gas	Other

Legend

13050013

IMAGERY.DOQQ_2008_1M_CIR

T12S - R18E

ST BERNARD PARISH

FALSE MOUTH BAY

T12S - R17E

P.O.B.

0 3,000 Feet

