

TRACT 43227 - Portion of Block 40, South Pass Area, Plaquemines Parish, Louisiana

The beds and bottoms of all water bodies belonging to the State of Louisiana located in Blocks 40, and 42, South Pass Area, together with any present lands formed by accretion to the shoreline or islands formed therein, located in Plaquemines Parish, Louisiana, owned by and not presently under mineral lease as of June 12, 2013, from the State of Louisiana, the geographical area of which is more fully described as follows: Beginning at the Northeast corner of Block 40, South Pass Area having Coordinates of X = 2,630,686.00 and Y = 111,666.00; thence South 14,758.00 feet along the East line of said Block 40 to its Southeast corner having Coordinates of X = 2,630,686.00 and Y = 96,908.00; thence West 9,595.44 feet along the South line of said Block 40 to a point on the boundary of State Lease No. 21047 having Coordinates of X = 2,621,090.56 and Y = 96,908.00; thence along the boundary of said State Lease No. 21047 the following courses and distances: North 53 degrees 14 minutes 01 seconds East 920.55 feet to a point having Coordinates of X = 2,621,828.00 and Y = 97,459.00, North 36 degrees 06 minutes 22 seconds West 2,190.79 feet to a point having Coordinates of X = 2,620,537.00 and Y = 99,229.00 and South 55 degrees 04 minutes 00 seconds West 5,621.98 feet to a point on the West line of Block 42, South Pass Area having Coordinates of X = 2,615,928.00 and Y = 96,009.71; thence North 2,473.29 feet along the West lines of said Block 42 and said Block 40 to the Northernmost Southwest corner of State Lease No. 21048 having Coordinates of X = 2,615,928.00 and Y = 98,483.00; thence along the boundary of said State Lease No. 21048 the following courses and distances: South 47 degrees 35 minutes 51 seconds East 717.74 feet to a point having Coordinates of X = 2,616,458.00 and Y = 97,999.00, North 60 degrees 45 minutes 12 seconds East 5,649.13 feet to a point having Coordinates of X = 2,621,387.00 and Y = 100,759.00 and North 52 degrees 43 minutes 19 seconds East 2,412.95 feet to its Southeast corner and the Southwest corner of State Lease No. 21046 having Coordinates of X = 2,623,307.00 and Y = 102,220.48; thence along the boundary of said State Lease No. 21046 the following courses and distances: North 52 degrees 43 minutes 19 seconds East 1,265.54 feet to a point having Coordinates of X = 2,624,314.00 and Y = 102,987.00 and North 25 degrees 00 minutes 36 seconds West approximately 996 feet to a point on the boundary of State Lease No. 2552, as amended; thence Northeasterly and Northwesterly along the boundary of said State Lease No. 2552 to a point on the boundary of State Lease No. 2565; thence Northeasterly along the boundary of said State Lease No. 2565 to a point on the North line of said Block 40 having a Coordinate of Y = 111,666.00; thence East approximately 1,919 feet along the North line of said Block 40 to the point of beginning, containing **2,351 acres**, all as more particularly outlined on a plat on file in the Office of Mineral Resources, Department of Natural Resources. All bearings, distances and coordinates are based on Louisiana Coordinate System of 1927, (North or South Zone).

NOTE: The above description of the Tract nominated for lease has been provided and corrected, where required, exclusively by the nomination

party. Any mineral lease selected from this Tract and awarded by the Louisiana State Mineral and Energy Board shall be without warranty of any kind, either express, implied, or statutory, including, but not limited to, the implied warranties of merchantability and fitness for a particular purpose. Should the mineral lease awarded by the Louisiana State Mineral and Energy Board be subsequently modified, cancelled or abrogated due to the existence of conflicting leases, operating agreements, private claims or other future obligations or conditions which may affect all or any portion of the leased Tract, it shall not relieve the Lessee of the obligation to pay any bonus due thereon to the Louisiana State Mineral and Energy Board, nor shall the Louisiana State Mineral and Energy Board be obligated to refund any consideration paid by the Lessor prior to such modification, cancellation, or abrogation, including, but not limited to, bonuses, rentals and royalties.

NOTE: The State of Louisiana does hereby reserve, and this lease shall be subject to, the imprescriptible right of surface use in the nature of a servitude in favor of the Department of Natural Resources, including its Offices and Commissions, for the sole purpose of implementing, constructing, servicing and maintaining approved coastal zone management and/or restoration projects. Utilization of any and all rights derived under this lease by the mineral lessee, its agents, successors or assigns, shall not interfere with nor hinder the reasonable surface use by the Department of Natural Resources, its Offices or Commissions, as herein above reserved.

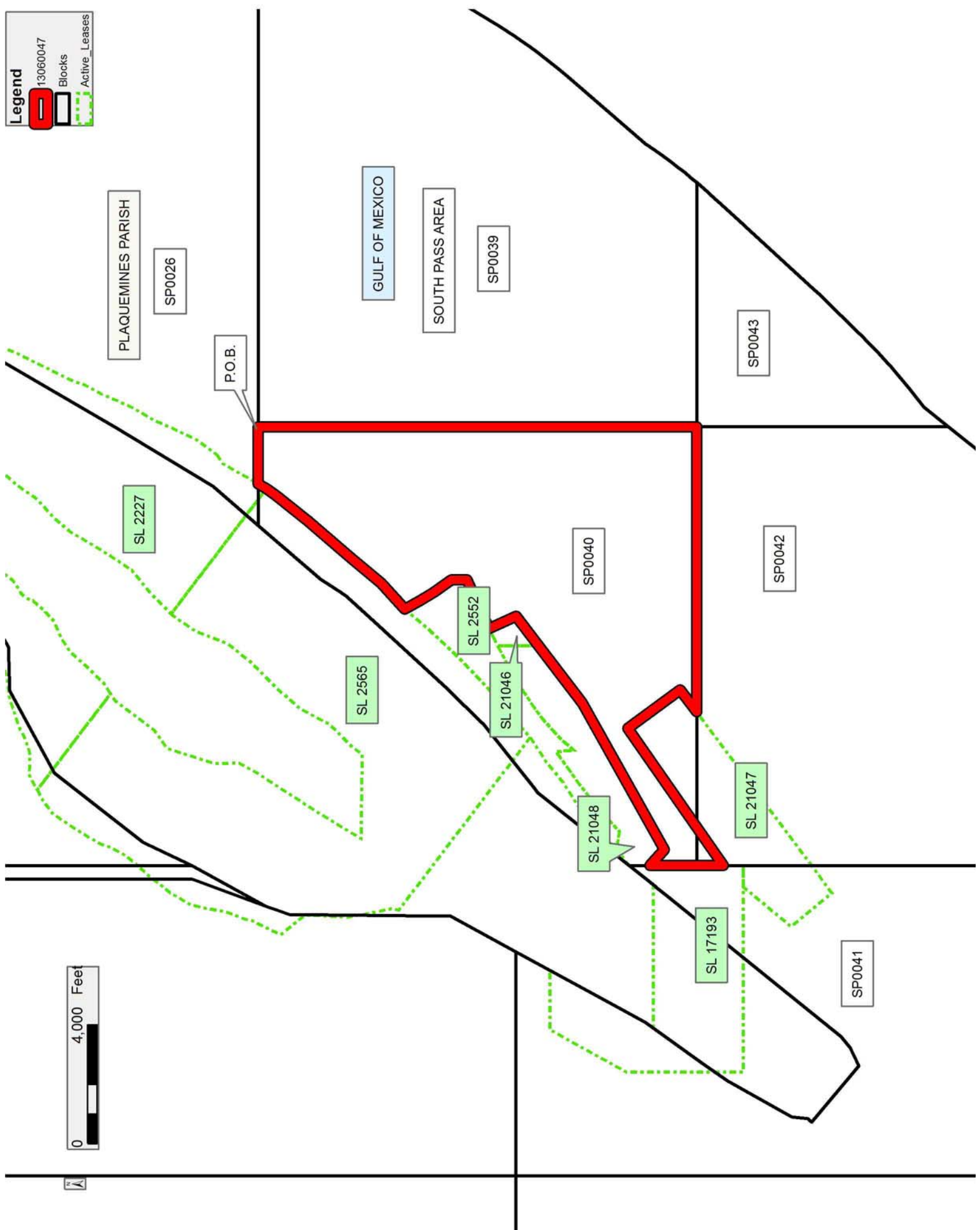
NOTE: It appears, according to our records, that a portion of this Tract is located within the restrictive safety fairway area as set out by the Corps of Engineers, U.S. Army and/or the restrictive anchorage area as set out by the U.S. Coast Guard.

Applicant: HAROLD J. ANDERSON, INC.

Bidder	Cash Payment	Price/Acre	Rental	Oil	Gas	Other

Legend

- 13060047
- Blocks
- Active Leases



TRACT 43228 - Portion of Block 39, South Pass Area, Plaquemines Parish, Louisiana

The beds and bottoms of all water bodies belonging to the State of Louisiana located in Block 39, South Pass Area, together with any present lands formed by accretion to the shoreline or islands formed therein, located in Plaquemines Parish, Louisiana, owned by and not presently under mineral lease as of June 12, 2013, from the State of Louisiana, the geographical area of which is more fully described as follows: Beginning at the Northwest corner of Block 39, South Pass Area having Coordinates of X = 2,630,686.00 and Y = 111,666.00; thence East 7,379.00 feet along the North line of said Block 39 to a point having Coordinates of X = 2,638,065.00 and Y = 111,666.00; thence South 14,758.00 feet to a point on the South line of said Block 39 having Coordinates of X = 2,638,065.00 and Y = 96,908.00; thence West 7,379.00 feet along the South line of said Block 39 to its Southwest corner having Coordinates of X = 2,630,686.00 and Y = 96,908.00; thence North 14,758.00 feet along the West line of said Block 39 to the point of beginning, containing **2,499.98 acres**, all as more particularly outlined on a plat on file in the Office of Mineral Resources, Department of Natural Resources. All bearings, distances and coordinates are based on Louisiana Coordinate System of 1927, (North or South Zone).

NOTE: The above description of the Tract nominated for lease has been provided and corrected, where required, exclusively by the nomination party. Any mineral lease selected from this Tract and awarded by the Louisiana State Mineral and Energy Board shall be without warranty of any kind, either express, implied, or statutory, including, but not limited to, the implied warranties of merchantability and fitness for a particular purpose. Should the mineral lease awarded by the Louisiana State Mineral and Energy Board be subsequently modified, cancelled or abrogated due to the existence of conflicting leases, operating agreements, private claims or other future obligations or conditions which may affect all or any portion of the leased Tract, it shall not relieve the Lessee of the obligation to pay any bonus due thereon to the Louisiana State Mineral and Energy Board, nor shall the Louisiana State Mineral and Energy Board be obligated to refund any consideration paid by the Lessor prior to such modification, cancellation, or abrogation, including, but not limited to, bonuses, rentals and royalties.

NOTE: The State of Louisiana does hereby reserve, and this lease shall be subject to, the imprescriptible right of surface use in the nature of a servitude in favor of the Department of Natural Resources, including its Offices and Commissions, for the sole purpose of implementing, constructing, servicing and maintaining approved coastal zone management and/or restoration projects. Utilization of any and all rights derived under this lease by the mineral lessee, its agents, successors or assigns, shall not interfere with nor hinder the reasonable surface use by the Department of Natural Resources, its Offices or Commissions, as herein above reserved.

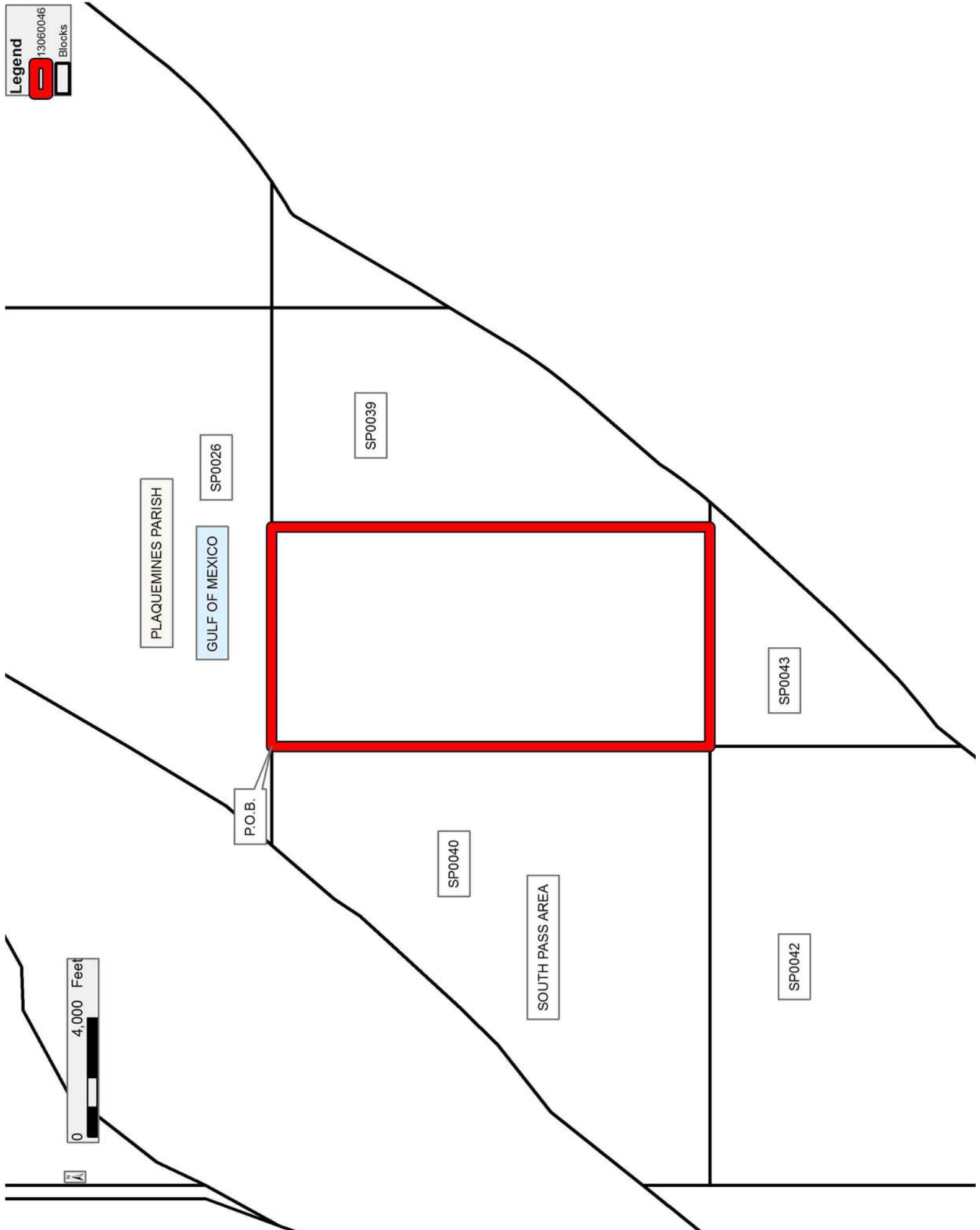
NOTE: It appears, according to our records, that a portion of this Tract is located within the restrictive safety fairway area as set out by the Corps of Engineers, U.S. Army and/or the restrictive anchorage area as set out by the U.S. Coast Guard.

Applicant: HAROLD J. ANDERSON, INC.

Bidder	Cash Payment	Price/Acre	Rental	Oil	Gas	Other

Legend

13060046
Blocks



TRACT 43229 - Portion of Block 39, South Pass Area, Plaquemines Parish, Louisiana

The beds and bottoms of all water bodies belonging to the State of Louisiana located in Block 39, South Pass Area, together with any present lands formed by accretion to the shoreline or islands formed therein, located in Plaquemines Parish, Louisiana, owned by and not presently under mineral lease as of June 12, 2013, from the State of Louisiana, the geographical area of which is more fully described as follows: Beginning at a point on the North line of Block 39, South Pass Area having Coordinates of X = 2,638,065.00 and Y = 111,666.00; thence East 7,379.00 feet along the North line of said Block 39 to its Northeast corner having Coordinates of X = 2,645,444.00 and Y = 111,666.00; thence South 6,012.05 feet along the East line of said Block 39 to a point on the Three Mile Line, as decreed by the Supreme Court of the United States, as determined by a Special Master appointed therein, in litigation styled *United States v. State of Louisiana et al No. 9 Original*, in 1975, having Coordinates of X = 2,645,444.00 and Y = 105,653.95; thence Southwesterly on a straight line to a point having Coordinates of X = 2,644,270 and Y = 103,721; thence Southwesterly along an arc to the right having a radius of 18,240.60 feet and a center located at X = 2,628,680 and Y = 113,190 to a point having Coordinates of X = 2,642,494 and Y = 101,278; thence Southwesterly on a straight line to a point having Coordinates of X = 2,640,182.00 and Y = 98,597.00; thence Southwesterly along an arc to the right having a radius of 18,240.60 feet and a center located at X = 2,624,995.00 and Y = 108,700.00 to a point on the South line of said Block 39 having Coordinates of X = 2,638,911.47 and Y = 96,908.00; thence West 846.47 feet along the South line of said Block 39 to a point having Coordinates of X = 2,638,065.00 and Y = 96,908.00; thence North 14,758.00 feet to the point of beginning, containing **1,880.80 acres, LESS AND EXCEPT** that portion thereof, if any, lying seaward of the line three nautical miles from the coast line of Louisiana, as said three mile line has been decreed by the Supreme Court of the United States, as determined by a Special Master appointed therein, in litigation styled **United States v. State of Louisiana et al No. 9 Original**, in 1975, all as more particularly outlined on a plat in the Office of Mineral Resources, Department of Natural Resources. All bearings, distances and coordinates are based on the Louisiana Coordinate System of 1927, (South Zone).

NOTE: The above description of the Tract nominated for lease has been provided and corrected, where required, exclusively by the nomination party. Any mineral lease selected from this Tract and awarded by the Louisiana State Mineral and Energy Board shall be without warranty of any kind, either express, implied, or statutory, including, but not limited to, the implied warranties of merchantability and fitness for a particular purpose. Should the mineral lease awarded by the Louisiana State Mineral and Energy Board be subsequently modified, cancelled or abrogated due to the existence of conflicting leases, operating agreements, private claims or other future obligations or conditions which may affect all or any portion of the leased Tract, it shall not relieve the Lessee of the

obligation to pay any bonus due thereon to the Louisiana State Mineral and Energy Board, nor shall the Louisiana State Mineral and Energy Board be obligated to refund any consideration paid by the Lessor prior to such modification, cancellation, or abrogation, including, but not limited to, bonuses, rentals and royalties.

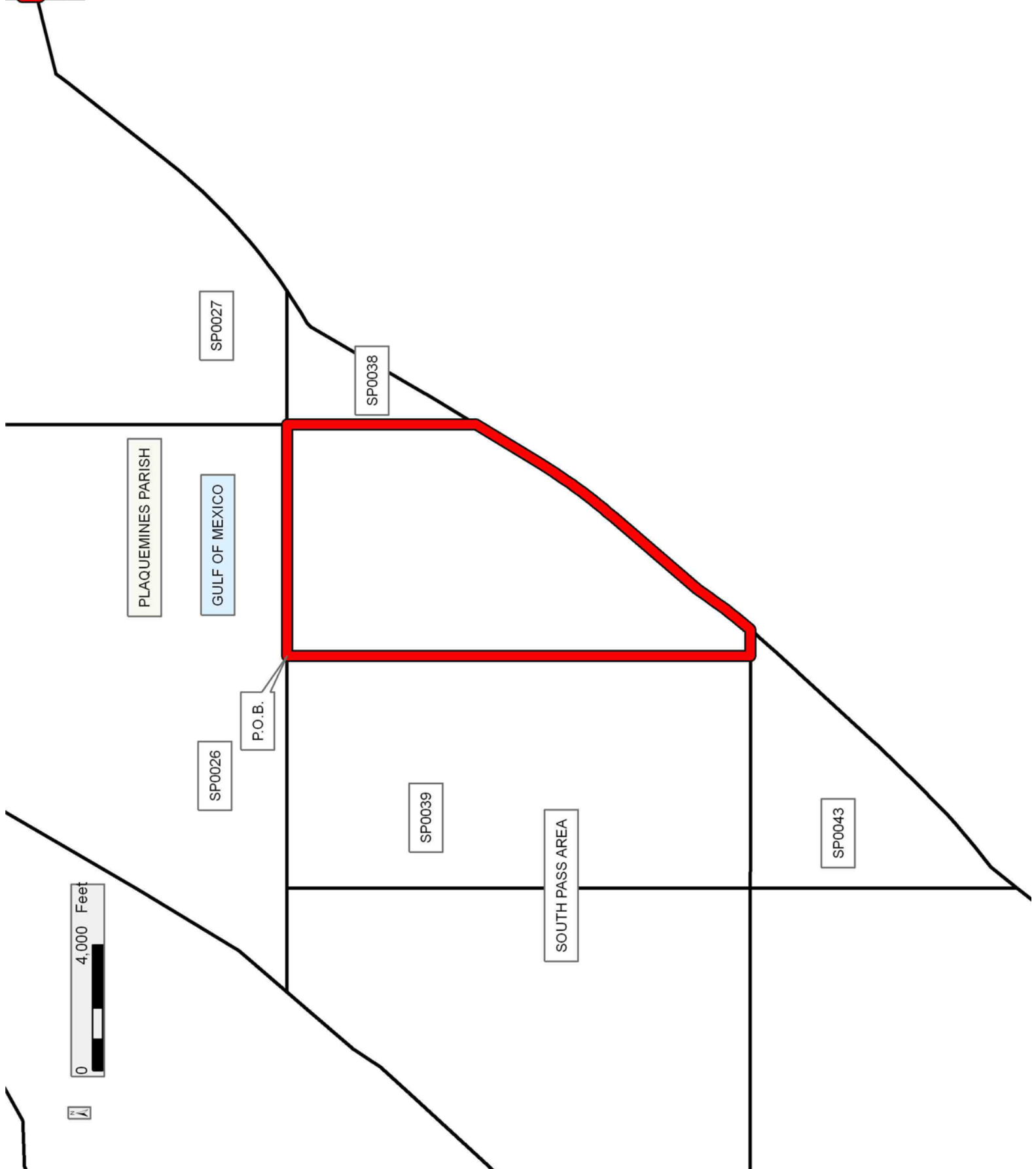
NOTE: The State of Louisiana does hereby reserve, and this lease shall be subject to, the imprescriptible right of surface use in the nature of a servitude in favor of the Department of Natural Resources, including its Offices and Commissions, for the sole purpose of implementing, constructing, servicing and maintaining approved coastal zone management and/or restoration projects. Utilization of any and all rights derived under this lease by the mineral lessee, its agents, successors or assigns, shall not interfere with nor hinder the reasonable surface use by the Department of Natural Resources, its Offices or Commissions, as herein above reserved.

NOTE: It appears, according to our records, that a portion of this Tract is located within the restrictive safety fairway area as set out by the Corps of Engineers, U.S. Army and/or the restrictive anchorage area as set out by the U.S. Coast Guard.

Applicant: HAROLD J. ANDERSON, INC.

Bidder	Cash Payment	Price/Acre	Rental	Oil	Gas	Other

1306004
Blocks



TRACT 43230 - Portion of Block 41, South Pass Area, and Block 84, West Delta Area, Plaquemines Parish, Louisiana

The beds and bottoms of all water bodies belonging to the State of Louisiana located in Block 41, South Pass Area, and Block 84, West Delta Area, together with any present lands formed by accretion to the shoreline or islands formed therein, located in Plaquemines Parish, Louisiana, owned by and not presently under mineral lease as of June 12, 2013, from the State of Louisiana, the geographical area of which is more fully described as follows: Beginning at a point on the North line of Block 84, West Delta Area having Coordinates of X = 2,600,828.00 and Y = 102,992.10; thence East 4,649.93 feet to the Northwest corner of Block 41, South Pass Area having Coordinates of X = 2,605,477.93 and Y = 102,992.10; thence East 5,553.06 feet to a point being the Northwest corner of State Lease No. 21049 having Coordinates of X = 2,611,030.99 and Y = 102,992.10; thence South 29 degrees 01 minutes 30 seconds West 1,305.81 feet along the Western boundary of said State Lease No. 21049 to a point being its Southwest corner having Coordinates of X = 2,610,397.42 and Y = 101,850.29, said point also being the Northernmost Northwest corner of State Lease No. 17193; thence along the boundary of said State Lease No. 17193 the following courses and distances: South 29 degrees 01 minutes 30 seconds West 2,925.63 feet and South 2,985.42 a point on the boundary of State Lease No. 17381 having Coordinates of X = 2,608,977.93 and Y = 96,306.68; thence along the boundary of said State Lease No. 17381 the following courses: Southwesterly on a straight line to a point having Coordinates of X = 2,608,665.00 and Y = 95,870.00, Southwesterly on a straight line to a point having Coordinates of X = 2,607,455.00 and Y = 93,710.00, Southwesterly on a straight line to a point having Coordinates of X = 2,607,400.00 and Y = 93,175.00, Southwesterly on a straight line to a point having Coordinates of X = 2,607,290.00 and Y = 93,040.00, Southeasterly on a straight line to a point having Coordinates of X = 2,609,180.00 and Y = 91,445.00, Northeasterly on a straight line to a point having Coordinates of X = 2,609,785.00 and Y = 91,750.00, Northeasterly on a straight line to a point having Coordinates of X = 2,610,160.00 and Y = 92,050.00, Northeasterly on a straight line to a point having Coordinates of X = 2,611,843.00 and Y = 94,130.00 and Northeasterly on a straight line to its Northeast corner and a point on the boundary of said State Lease No. 17193 having Coordinates of X = 2,612,822.55 and Y = 95,342.10; thence East 2,378.66 feet along the boundary of said State Lease No. 17193 to a point on the boundary of State Lease No. 21047 having Coordinates of X = 2,615,201.22 and Y = 95,342.10; thence along the boundary of said State Lease No. 21047 the following courses: South 39 degrees 35 minutes 14 seconds West 2,090.56 feet to a point having Coordinates of X = 2,613,869.00 and Y = 93,731.00, South 39 degrees 20 minutes 38 seconds East 1,779.26 feet to a point having Coordinates of X = 2,614,997.00 and Y = 92,355.00 and North 53 degrees 14 minutes 01 seconds East 1,162.18 feet to a point on the East line of said Block 41 having Coordinates of X = 2,615,928.00 and Y = 93,050.63; thence South 3,700.63 feet along the East line of said Block 41 to a point having Coordinates of X = 2,615,928.00 and Y = 89,350.00; thence West 10,450.07

feet to a point on the West line of said Block 41 having Coordinates of X = 2,605,477.93 and Y = 89,350.00; thence North 8,907.36 feet along the West line of said Block 41 to the Northeast corner of Operating Agreement A0232 having Coordinates of X = 2,605,477.93 and Y = 98,257.36; thence West 4,649.93 feet along the boundary of said Operating Agreement A0232 to a point having Coordinates of X = 2,600,828.00 and Y = 98,257.36; thence North 4,734.74 feet to the point of beginning, containing approximately **2,254.73 acres**, all as more particularly outlined on a plat on file in the Office of Mineral Resources, Department of Natural Resources. All bearings, distances and coordinates are based on Louisiana Coordinate System of 1927, (North or South Zone).

NOTE: The above description of the Tract nominated for lease has been provided and corrected, where required, exclusively by the nomination party. Any mineral lease selected from this Tract and awarded by the Louisiana State Mineral and Energy Board shall be without warranty of any kind, either express, implied, or statutory, including, but not limited to, the implied warranties of merchantability and fitness for a particular purpose. Should the mineral lease awarded by the Louisiana State Mineral and Energy Board be subsequently modified, cancelled or abrogated due to the existence of conflicting leases, operating agreements, private claims or other future obligations or conditions which may affect all or any portion of the leased Tract, it shall not relieve the Lessee of the obligation to pay any bonus due thereon to the Louisiana State Mineral and Energy Board, nor shall the Louisiana State Mineral and Energy Board be obligated to refund any consideration paid by the Lessor prior to such modification, cancellation, or abrogation, including, but not limited to, bonuses, rentals and royalties.

NOTE: The State of Louisiana does hereby reserve, and this lease shall be subject to, the imprescriptible right of surface use in the nature of a servitude in favor of the Department of Natural Resources, including its Offices and Commissions, for the sole purpose of implementing, constructing, servicing and maintaining approved coastal zone management and/or restoration projects. Utilization of any and all rights derived under this lease by the mineral lessee, its agents, successors or assigns, shall not interfere with nor hinder the reasonable surface use by the Department of Natural Resources, its Offices or Commissions, as herein above reserved.

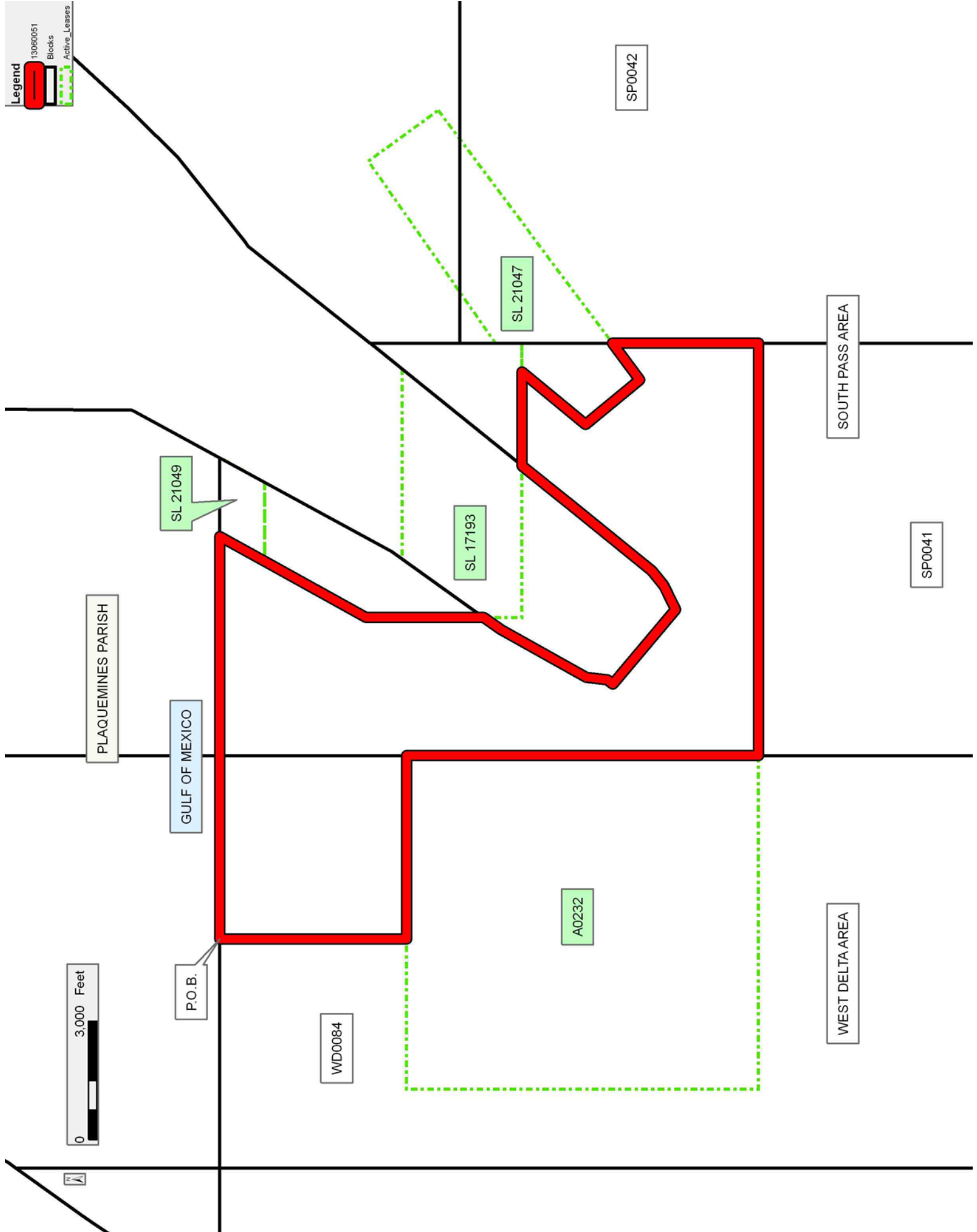
NOTE: It appears, according to our records, that a portion of this Tract is located within the restrictive safety fairway area as set out by the Corps of Engineers, U.S. Army and/or the restrictive anchorage area as set out by the U.S. Coast Guard.

Applicant: HAROLD J. ANDERSON, INC.

Bidder	Cash Payment	Price/Acre	Rental	Oil	Gas	Other

Legend

- 13060051 Blocks
- Active Leases



TRACT 43231 - Portion of Block 42, South Pass Area, Plaquemines Parish, Louisiana

The beds and bottoms of all water bodies belonging to the State of Louisiana located in Block 42, South Pass Area, together with any present lands formed by accretion to the shoreline or islands formed therein, located in Plaquemines Parish, Louisiana, owned by and not presently under mineral lease as of June 12, 2013, from the State of Louisiana, the geographical area of which is more fully described as follows: Beginning at the Northeast corner of Block 42, South Pass Area having Coordinates of X = 2,630,686.00 and Y = 96,908.00; thence South 7,558.00 feet along the East line of said Block 42 to a point having Coordinates of X = 2,630,686.00 and Y = 89,350.00; thence West 14,758.00 feet to a point on the West line of said Block 42 having Coordinates of X = 2,615,928.00 and Y = 89,350.00; thence North 3,700.63 feet along the West line of said Block 42 to a point on the boundary of State Lease No. 21047 having Coordinates of X = 2,615,928.00 and Y = 93,050.63; thence North 53 degrees 14 minute 01 seconds East 6,444.48 feet along the boundary of said State Lease No. 21047 to a point on the North line of said Block 42 having Coordinates of X = 2,621,090.56 and Y = 96,908.00; thence East 9,595.44 feet along the North line of said Block 42 to the point of beginning, containing **2,332.05 acres**, all as more particularly outlined on a plat on file in the Office of Mineral Resources, Department of Natural Resources. All bearings, distances and coordinates are based on Louisiana Coordinate System of 1927, (North or South Zone).

NOTE: The above description of the Tract nominated for lease has been provided and corrected, where required, exclusively by the nomination party. Any mineral lease selected from this Tract and awarded by the Louisiana State Mineral and Energy Board shall be without warranty of any kind, either express, implied, or statutory, including, but not limited to, the implied warranties of merchantability and fitness for a particular purpose. Should the mineral lease awarded by the Louisiana State Mineral and Energy Board be subsequently modified, cancelled or abrogated due to the existence of conflicting leases, operating agreements, private claims or other future obligations or conditions which may affect all or any portion of the leased Tract, it shall not relieve the Lessee of the obligation to pay any bonus due thereon to the Louisiana State Mineral and Energy Board, nor shall the Louisiana State Mineral and Energy Board be obligated to refund any consideration paid by the Lessor prior to such modification, cancellation, or abrogation, including, but not limited to, bonuses, rentals and royalties.

NOTE: The State of Louisiana does hereby reserve, and this lease shall be subject to, the imprescriptible right of surface use in the nature of a servitude in favor of the Department of Natural Resources, including its Offices and Commissions, for the sole purpose of implementing, constructing, servicing and maintaining approved coastal zone management and/or restoration projects. Utilization of any and all rights derived under this lease by the mineral lessee, its agents, successors or assigns,

shall not interfere with nor hinder the reasonable surface use by the Department of Natural Resources, its Offices or Commissions, as herein above reserved.

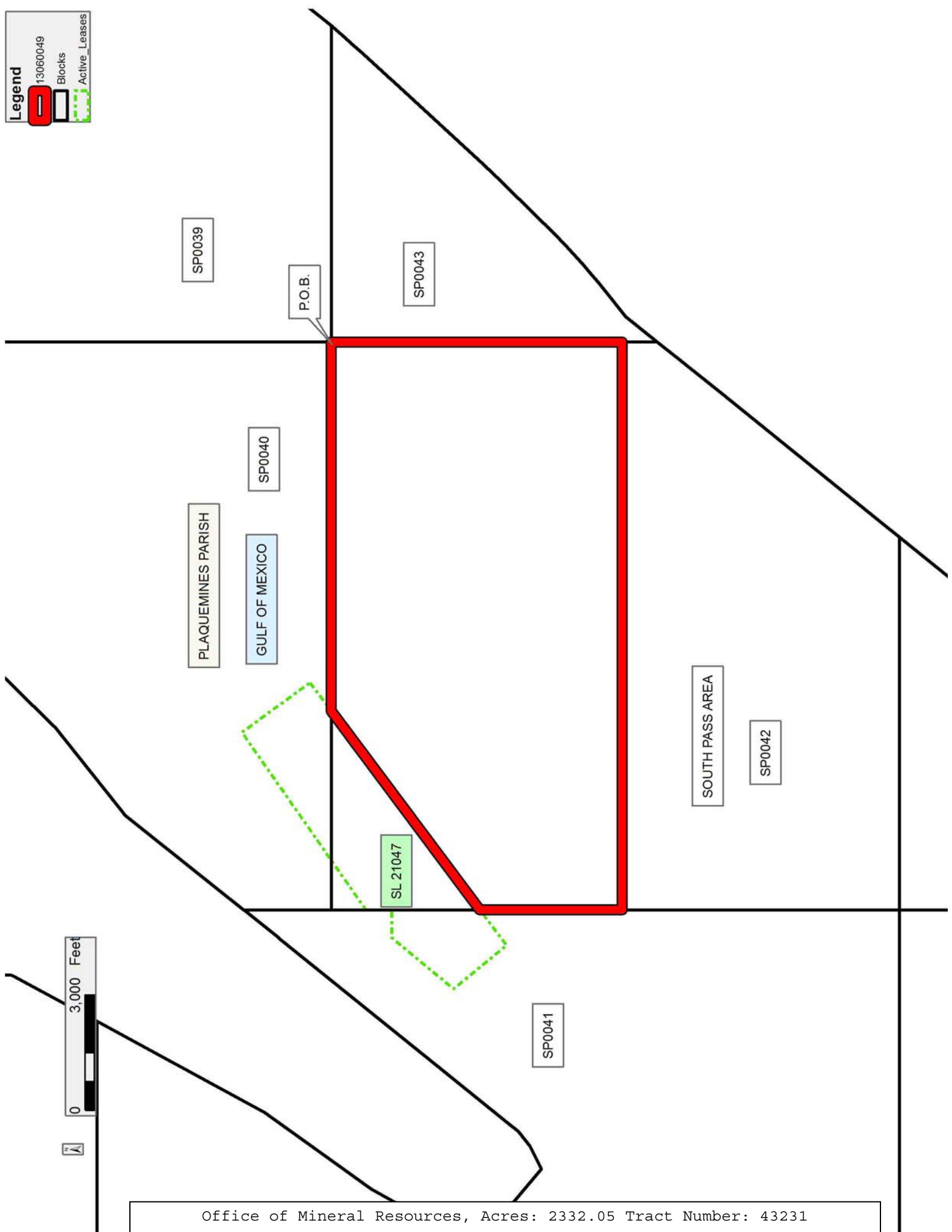
NOTE: It appears, according to our records, that a portion of this Tract is located within the restrictive safety fairway area as set out by the Corps of Engineers, U.S. Army and/or the restrictive anchorage area as set out by the U.S. Coast Guard.

Applicant: HAROLD J. ANDERSON, INC.

Bidder	Cash Payment	Price/Acre	Rental	Oil	Gas	Other

Legend

-  13060049
-  Blocks
-  Active_Leases



SP0039

P.O.B.

SP0043

SP0040

PLAQUEMINES PARISH

GULF OF MEXICO

SOUTH PASS AREA

SP0042

SL 21047

SP0041



TRACT 43232 - Portion of Block 43, South Pass Area, Plaquemines Parish, Louisiana

The beds and bottoms of all water bodies belonging to the State of Louisiana located in Block 43, South Pass Area, together with any present lands formed by accretion to the shoreline or islands formed therein, located in Plaquemines Parish, Louisiana, owned by and not presently under mineral lease as of June 12, 2013, from the State of Louisiana, the geographical area of which is more fully described as follows: Beginning at the Northwest corner of Block 43, South Pass Area having Coordinates of X = 2,630,686.00 and Y = 96,908.00; thence East 8,225.47 feet along the North line of said Block 43 to a point on the Three Mile Line, as decreed by the Supreme Court of the United States, as determined by a Special Master appointed therein, in litigation styled *United States v. State of Louisiana et al No. 9 Original*, in 1975, having Coordinates of X = 2,638,911.47 and Y = 96,908.00; thence Southwesterly along an arc to the right having a radius of 18,240.60 feet and a center located at X = 2,624,995 and Y = 108,700 to a point having Coordinates of X = 2,638,408 and Y = 96,339; thence Southwesterly on a straight line to a point having Coordinates of X = 2,638,210 and Y = 96,123; thence Southwesterly on a straight line to a point having Coordinates of X = 2,637,530 and Y = 95,377; thence Southwesterly along an arc to the right having a radius of 18,240.60 feet and a center located at X = 2,624,045 and Y = 107,660 to a point having Coordinates of X = 2,637,471 and Y = 95,312; thence Southwesterly on a straight line to a point having Coordinates of X = 2,635,351 and Y = 93,007; thence Southwesterly along an arc to the right having a radius of 18,240.60 feet and a center located at X = 2,621,925 and Y = 105,355 to a point having Coordinates of X = 2,634,923 and Y = 92,558; thence Southwesterly on a straight line to a point having Coordinates of X = 2,633,653 and Y = 91,268; thence Southwesterly along an arc to the right having a radius of 18,240.60 feet and a center located at X = 2,620,655 and Y = 104,065 to a point having Coordinates of X = 2,631,973 and Y = 89,760; thence Southwesterly on a straight line to a point having Coordinates of X = 2,631,344 and Y = 89,262; thence Southwesterly on a straight line to a point on the West line of said Block 43 having Coordinates of X = 2,630,686.00 and Y = 88,435.62; thence North 8,472.38 feet to the point of beginning, containing **822.92 acres, LESS AND EXCEPT** that portion thereof, if any, lying seaward of the line three nautical miles from the coast line of Louisiana, as said three mile line has been decreed by the Supreme Court of the United States, as determined by a Special Master appointed therein, in litigation styled **United States v. State of Louisiana et al No. 9 Original**, in 1975, all as more particularly outlined on a plat in the Office of Mineral Resources, Department of Natural Resources. All bearings, distances and coordinates are based on the Louisiana Coordinate System of 1927, (South Zone).

NOTE: The above description of the Tract nominated for lease has been provided and corrected, where required, exclusively by the nomination party. Any mineral lease selected from this Tract and awarded by the Louisiana State Mineral and Energy Board shall be without warranty of any

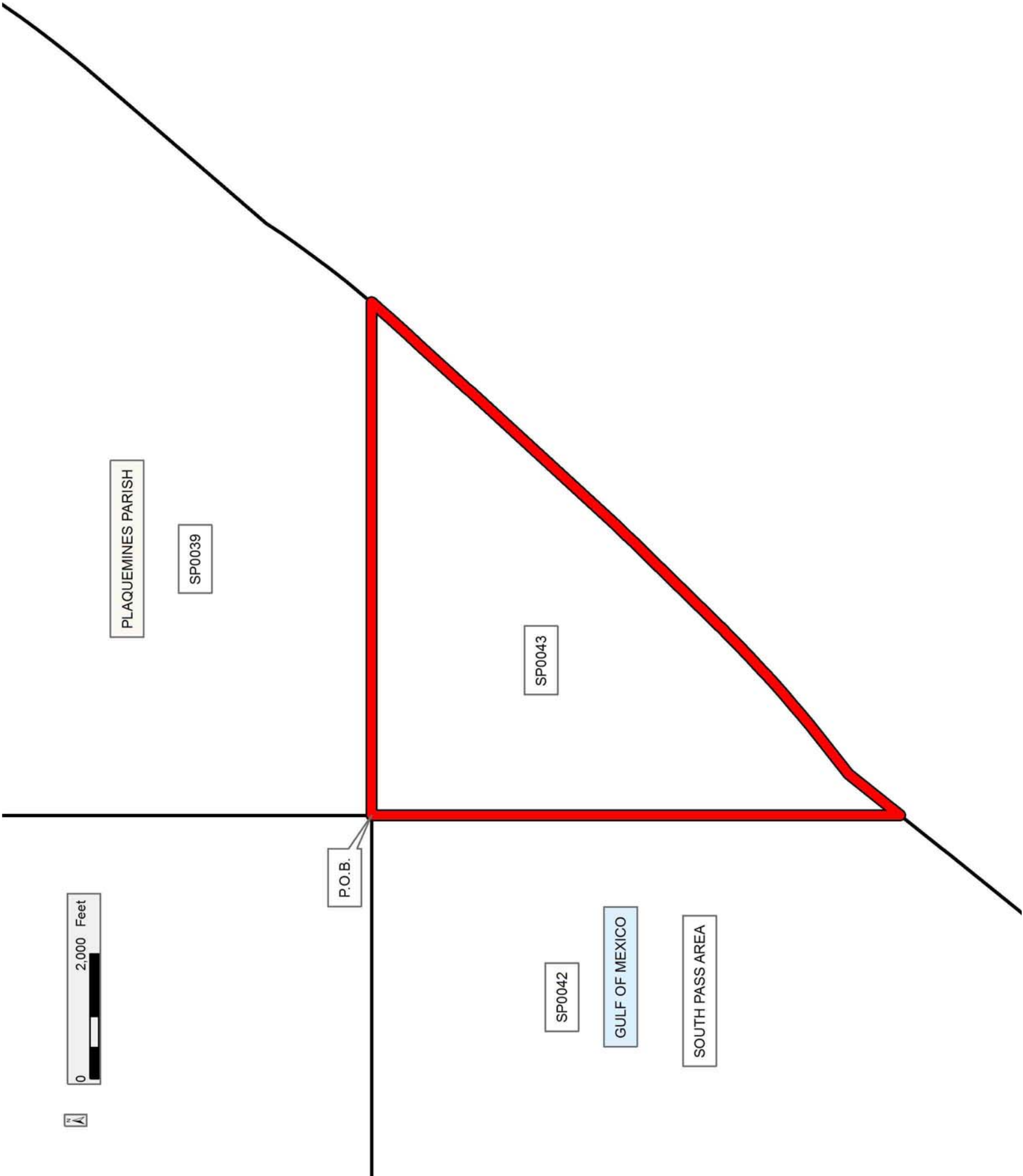
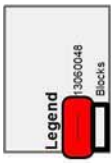
kind, either express, implied, or statutory, including, but not limited to, the implied warranties of merchantability and fitness for a particular purpose. Should the mineral lease awarded by the Louisiana State Mineral and Energy Board be subsequently modified, cancelled or abrogated due to the existence of conflicting leases, operating agreements, private claims or other future obligations or conditions which may affect all or any portion of the leased Tract, it shall not relieve the Lessee of the obligation to pay any bonus due thereon to the Louisiana State Mineral and Energy Board, nor shall the Louisiana State Mineral and Energy Board be obligated to refund any consideration paid by the Lessor prior to such modification, cancellation, or abrogation, including, but not limited to, bonuses, rentals and royalties.

NOTE: The State of Louisiana does hereby reserve, and this lease shall be subject to, the imprescriptible right of surface use in the nature of a servitude in favor of the Department of Natural Resources, including its Offices and Commissions, for the sole purpose of implementing, constructing, servicing and maintaining approved coastal zone management and/or restoration projects. Utilization of any and all rights derived under this lease by the mineral lessee, its agents, successors or assigns, shall not interfere with nor hinder the reasonable surface use by the Department of Natural Resources, its Offices or Commissions, as herein above reserved.

NOTE: It appears, according to our records, that a portion of this Tract is located within the restrictive safety fairway area as set out by the Corps of Engineers, U.S. Army and/or the restrictive anchorage area as set out by the U.S. Coast Guard.

Applicant: HAROLD J. ANDERSON, INC.

Bidder	Cash Payment	Price/Acre	Rental	Oil	Gas	Other



TRACT 43233 - Portion of Block 41, South Pass Area, and Block 84, West Delta Area, Plaquemines Parish, Louisiana

The beds and bottoms of all water bodies belonging to the State of Louisiana located in Block 41, South Pass Area, and Block 84, West Delta Area, together with any present lands formed by accretion to the shoreline or islands formed therein, located in Plaquemines Parish, Louisiana, owned by and not presently under mineral lease as of June 12, 2013, from the State of Louisiana, the geographical area of which is more fully described as follows: Beginning at a point within Block 84, West Delta Area, also being a point on the Southern boundary of Operating Agreement A0232 having Coordinates of X = 2,600,828.00 and Y = 89,350.00; thence East 4,649.93 feet along the boundary of said Operating Agreement A0232 to its Southeast corner having Coordinates of X = 2,605,477.93 and Y = 89,350.00; thence East 10,450.07 feet to a point on the East line of Block 41, South Pass Area having Coordinates of X = 2,615,928.00 and Y = 89,350.00; thence South 7,200.00 feet along the East line of said Block 41 to its Southeast corner having Coordinates of X = 2,615,928.00 and Y = 82,150.00; thence West 15,100.00 feet along the South line of said Block 41 and the South line of said Block 84 to a point having Coordinates of X = 2,600,828.00 and Y = 82,150.00; thence North 7,200.00 feet to the point of beginning, containing **2,495.87 acres**, all as more particularly outlined on a plat on file in the Office of Mineral Resources, Department of Natural Resources. All bearings, distances and coordinates are based on Louisiana Coordinate System of 1927, (North or South Zone).

NOTE: The above description of the Tract nominated for lease has been provided and corrected, where required, exclusively by the nomination party. Any mineral lease selected from this Tract and awarded by the Louisiana State Mineral and Energy Board shall be without warranty of any kind, either express, implied, or statutory, including, but not limited to, the implied warranties of merchantability and fitness for a particular purpose. Should the mineral lease awarded by the Louisiana State Mineral and Energy Board be subsequently modified, cancelled or abrogated due to the existence of conflicting leases, operating agreements, private claims or other future obligations or conditions which may affect all or any portion of the leased Tract, it shall not relieve the Lessee of the obligation to pay any bonus due thereon to the Louisiana State Mineral and Energy Board, nor shall the Louisiana State Mineral and Energy Board be obligated to refund any consideration paid by the Lessor prior to such modification, cancellation, or abrogation, including, but not limited to, bonuses, rentals and royalties.

NOTE: The State of Louisiana does hereby reserve, and this lease shall be subject to, the imprescriptible right of surface use in the nature of a servitude in favor of the Department of Natural Resources, including its Offices and Commissions, for the sole purpose of implementing, constructing, servicing and maintaining approved coastal zone management and/or restoration projects. Utilization of any and all rights derived under this lease by the mineral lessee, its agents, successors or assigns,

shall not interfere with nor hinder the reasonable surface use by the Department of Natural Resources, its Offices or Commissions, as herein above reserved.

NOTE: It appears, according to our records, that a portion of this Tract is located within the restrictive safety fairway area as set out by the Corps of Engineers, U.S. Army and/or the restrictive anchorage area as set out by the U.S. Coast Guard.

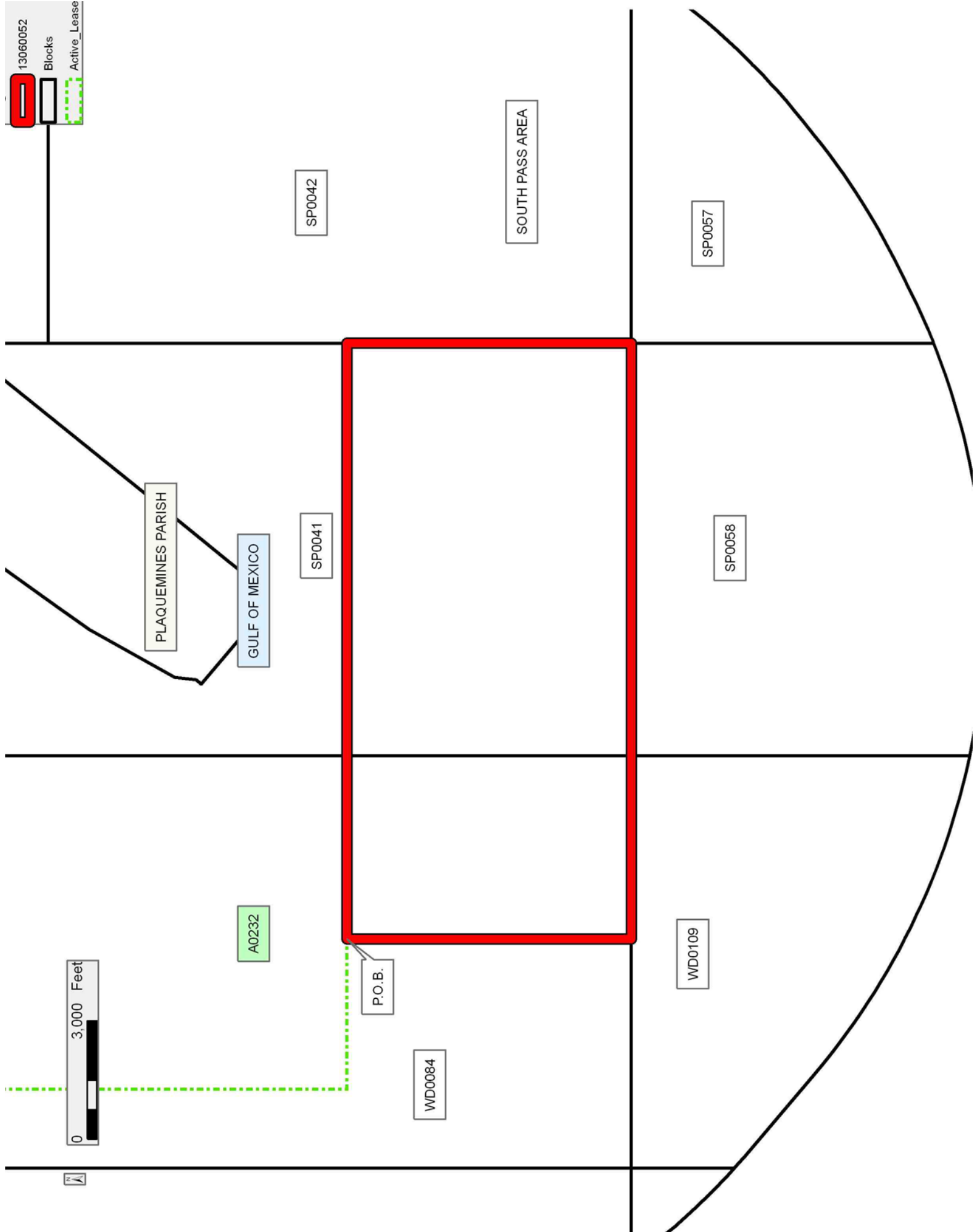
Applicant: HAROLD J. ANDERSON, INC.

Bidder	Cash Payment	Price/Acre	Rental	Oil	Gas	Other

13060052

Blocks

Active_Lease



TRACT 43234 - Portion of Block 42, South Pass Area, Plaquemines Parish, Louisiana

The beds and bottoms of all water bodies belonging to the State of Louisiana located in Block 42, South Pass Area, together with any present lands formed by accretion to the shoreline or islands formed therein, located in Plaquemines Parish, Louisiana, owned by and not presently under mineral lease as of June 12, 2013, from the State of Louisiana, the geographical area of which is more fully described as follows: Beginning at a point on the West line of Block 42, South Pass Area having Coordinates of X = 2,615,928.00 and Y = 89,350.00; thence East 14,758.00 feet to a point on the East line of said Block 42 having Coordinates of X = 2,630,686.00 and Y = 89,350.00; thence South 914.38 feet along the East line of said Block 42 to a point on the Three Mile Line, as decreed by the Supreme Court of the United States, as determined by a Special Master appointed therein, in litigation styled *United States v. State of Louisiana et al No. 9 Original*, in 1975, having Coordinates of X = 2,630,686.00 and Y = 88,435.62; thence Southwesterly on a straight line to a point having Coordinates of X = 2,630,156 and Y = 87,770; thence Southwesterly along an arc to the right having a radius of 18,240.60 feet and a center located at X = 2,615,885 and Y = 99,131 to a point having Coordinates of X = 2,630,068 and Y = 87,661; thence Southwesterly on a straight line to a point having Coordinates of X = 2,629,389 and Y = 86,821; thence Southwesterly on a straight line to a point having Coordinates of X = 2,626,027 and Y = 82,661; thence Southwesterly on a straight line to a point on the South line of said Block 42 having Coordinates of X = 2,625,613.54 and Y = 82,150.00; thence West 9685.54 feet along the South line of said Block 42 to its Southwest corner having Coordinates of X = 2,615,928.00 and Y = 82,150.00; thence North 7,200.00 feet along the West line of said Block 42 to the point of beginning, containing **2,073.91 acres, LESS AND EXCEPT** that portion thereof, if any, lying seaward of the line three nautical miles from the coast line of Louisiana, as said three mile line has been decreed by the Supreme Court of the United States, as determined by a Special Master appointed therein, in litigation styled **United States v. State of Louisiana et al No. 9 Original**, in 1975, all as more particularly outlined on a plat in the Office of Mineral Resources, Department of Natural Resources. All bearings, distances and coordinates are based on the Louisiana Coordinate System of 1927, (South Zone).

NOTE: The above description of the Tract nominated for lease has been provided and corrected, where required, exclusively by the nomination party. Any mineral lease selected from this Tract and awarded by the Louisiana State Mineral and Energy Board shall be without warranty of any kind, either express, implied, or statutory, including, but not limited to, the implied warranties of merchantability and fitness for a particular purpose. Should the mineral lease awarded by the Louisiana State Mineral and Energy Board be subsequently modified, cancelled or abrogated due to the existence of conflicting leases, operating agreements, private claims or other future obligations or conditions which may affect all or any

portion of the leased Tract, it shall not relieve the Lessee of the obligation to pay any bonus due thereon to the Louisiana State Mineral and Energy Board, nor shall the Louisiana State Mineral and Energy Board be obligated to refund any consideration paid by the Lessor prior to such modification, cancellation, or abrogation, including, but not limited to, bonuses, rentals and royalties.

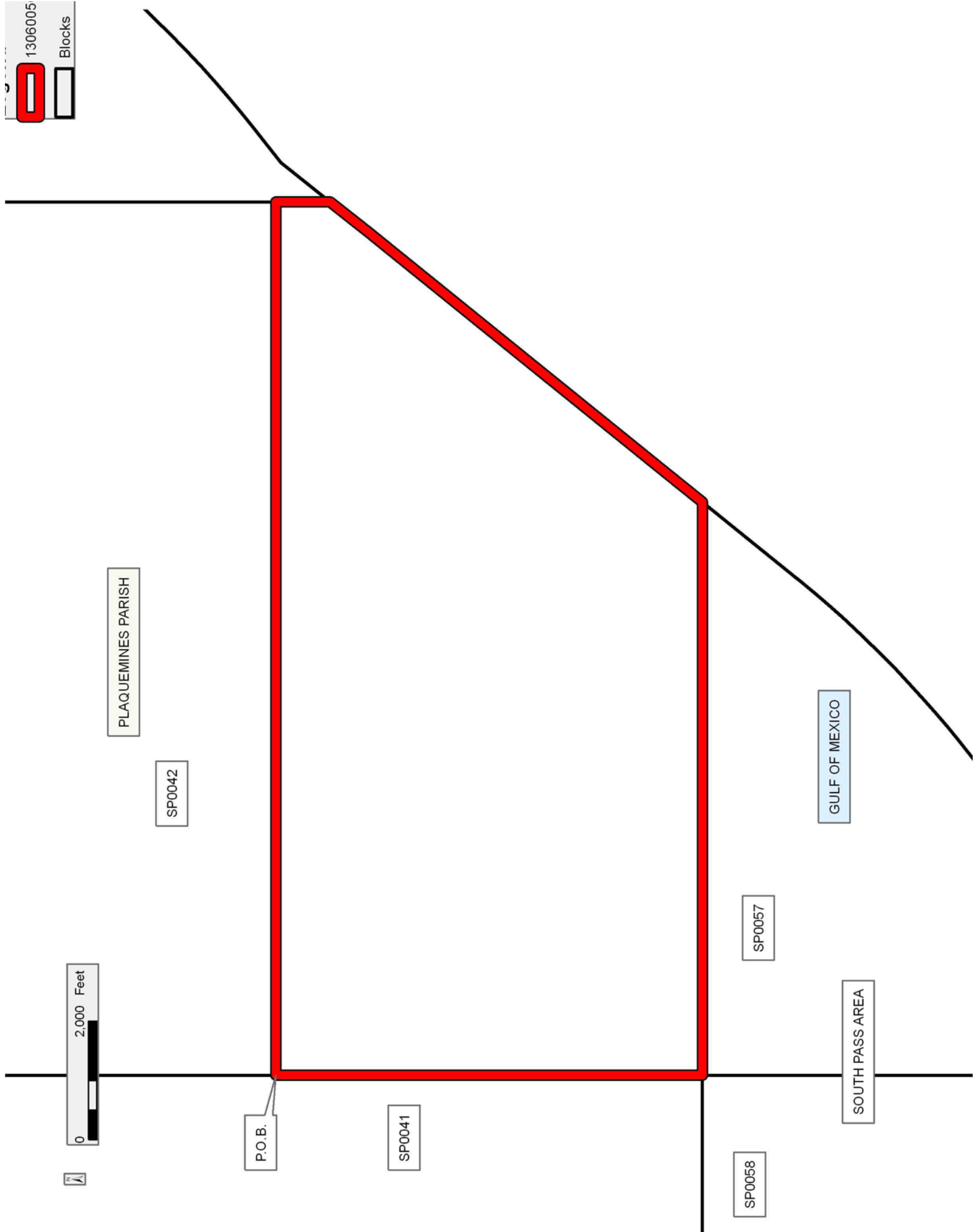
NOTE: The State of Louisiana does hereby reserve, and this lease shall be subject to, the imprescriptible right of surface use in the nature of a servitude in favor of the Department of Natural Resources, including its Offices and Commissions, for the sole purpose of implementing, constructing, servicing and maintaining approved coastal zone management and/or restoration projects. Utilization of any and all rights derived under this lease by the mineral lessee, its agents, successors or assigns, shall not interfere with nor hinder the reasonable surface use by the Department of Natural Resources, its Offices or Commissions, as herein above reserved.

NOTE: It appears, according to our records, that a portion of this Tract is located within the restrictive safety fairway area as set out by the Corps of Engineers, U.S. Army and/or the restrictive anchorage area as set out by the U.S. Coast Guard.

Applicant: HAROLD J. ANDERSON, INC.

Bidder	Cash Payment	Price/Acre	Rental	Oil	Gas	Other

1306005
 Blocks



Office of Mineral Resources, Acres: 2073.91 Tract Number: 43234