

TRACT 43245 - Beauregard Parish, Louisiana

All of the lands now or formerly constituting the beds and bottoms of all water bodies of every nature and description the title of which vests in the State of Louisiana, together with all islands arising therein and other lands formed by accretion or by reliction, where allowed by law, excepting tax adjudicated lands, and not presently under mineral lease on June 12, 2013, situated in Beauregard Parish, Louisiana, and more particularly described as follows: Beginning at a point having Coordinates of X = 1,299,130.00 and Y = 768,020.00; thence South 18,480.00 feet to a point having Coordinates of X = 1,299,130.00 and Y = 749,540.00; thence West 18,480.00 feet to a point having Coordinates of X = 1,280,650.00 and Y = 749,540.00; thence North 18,480.00 feet to a point having Coordinates of X = 1,280,650.00 and Y = 768,020.00; thence East 18,480.00 feet to the point of beginning, **LESS AND EXCEPT** any right, title, and interest in lands owned by and not under lease from the State of Louisiana, on behalf of the Beauregard Parish School Board, situated in Section 16, Township 4 South, Range 12 West, Beauregard Parish, Louisiana, contained within the above described tract, containing approximately **169 acres, LESS AND EXCEPT** that portion thereof, if any, located West of the boundary line between the States of Texas and Louisiana as determined by the report of the Special Master and adjudicated by the Supreme Court of the United States in litigation styled **Texas v. Louisiana, et al No. 36 Original**, or as otherwise approved by said court, all as more particularly outlined on a plat on file in the Office of Mineral Resources, Department of Natural Resources. All bearings, distances and coordinates are based on Louisiana Coordinate System of 1927, (North or South Zone), where applicable.

NOTE: The above description of the Tract nominated for lease has been provided and corrected, where required, exclusively by the nomination party. Any mineral lease selected from this Tract and awarded by the Louisiana State Mineral and Energy Board shall be without warranty of any kind, either express, implied, or statutory, including, but not limited to, the implied warranties of merchantability and fitness for a particular purpose. Should the mineral lease awarded by the Louisiana State Mineral and Energy Board be subsequently modified, cancelled or abrogated due to the existence of conflicting leases, operating agreements, private claims or other future obligations or conditions which may affect all or any portion of the leased Tract, it shall not relieve the Lessee of the obligation to pay any bonus due thereon to the Louisiana State Mineral and Energy Board, nor shall the Louisiana State Mineral and Energy Board be obligated to refund any consideration paid by the Lessor prior to such modification, cancellation, or abrogation, including, but not limited to, bonuses, rentals and royalties.

Applicant: TENDER ENERGY, LLC

Bidder	Cash Payment	Price/Acre	Rental	Oil	Gas	Other

Legend

13060059

IMAGERY.DOQQ_2008_1M_CIR

BEAUREGARD PARISH

SABINE RIVER

P.O.B.

T3S - R12W

T4S - R12W



TRACT 43246 - Beauregard Parish, Louisiana

All of the lands now or formerly constituting the beds and bottoms of all water bodies of every nature and description the title of which vests in the State of Louisiana, together with all islands arising therein and other lands formed by accretion or by reliction, where allowed by law, excepting tax adjudicated lands, and not presently under mineral lease on June 12, 2013, situated in Beauregard Parish, Louisiana, and more particularly described as follows: Beginning at a point having Coordinates of X = 1,274,820.00 and Y = 731,060.00; thence North 18,480.00 feet to a point having Coordinates of X = 1,274,820.00 and Y = 749,540.00; thence East 18,480.00 feet to a point having Coordinates of X = 1,293,300.00 and Y = 749,540.00; thence South 18,480.00 feet to a point having Coordinates of X = 1,293,300.00 and Y = 731,060.00; thence West 18,480.00 feet to the point of beginning, **LESS AND EXCEPT** any right, title, and interest in lands owned by and not under lease from the State of Louisiana, on behalf of the Beauregard Parish School Board, situated in Section 16, Township 4 South, Range 12 West, Beauregard Parish, Louisiana, contained within the above described tract, containing approximately **173 acres, LESS AND EXCEPT** that portion thereof, if any, located West of the boundary line between the States of Texas and Louisiana as determined by the report of the Special Master and adjudicated by the Supreme Court of the United States in litigation styled **Texas v. Louisiana, et al No. 36 Original**, or as otherwise approved by said court, all as more particularly outlined on a plat on file in the Office of Mineral Resources, Department of Natural Resources. All bearings, distances and coordinates are based on Louisiana Coordinate System of 1927, (North or South Zone), where applicable.

NOTE: The above description of the Tract nominated for lease has been provided and corrected, where required, exclusively by the nomination party. Any mineral lease selected from this Tract and awarded by the Louisiana State Mineral and Energy Board shall be without warranty of any kind, either express, implied, or statutory, including, but not limited to, the implied warranties of merchantability and fitness for a particular purpose. Should the mineral lease awarded by the Louisiana State Mineral and Energy Board be subsequently modified, cancelled or abrogated due to the existence of conflicting leases, operating agreements, private claims or other future obligations or conditions which may affect all or any portion of the leased Tract, it shall not relieve the Lessee of the obligation to pay any bonus due thereon to the Louisiana State Mineral and Energy Board, nor shall the Louisiana State Mineral and Energy Board be obligated to refund any consideration paid by the Lessor prior to such modification, cancellation, or abrogation, including, but not limited to, bonuses, rentals and royalties.

Applicant: TENDER ENERGY, LLC

Bidder	Cash Payment	Price/Acre	Rental	Oil	Gas	Other

Legend



13060058

Active_Leases

Counties

IMAGERY.DOQQ_2008_1M_CIR

BEAUREGARD PARISH

T4S - R12W

SABINE RIVER

T5S - R12W

OLD RIVER

P.O.B.

0 4,000 Feet



TRACT 43247 - Beauregard Parish, Louisiana

All of the lands now or formerly constituting the beds and bottoms of all water bodies of every nature and description as to which title is vested in the State of Louisiana, together with all islands arising therein and other lands formed by accretion or by reliction, where allowed by law, excepting tax adjudicated lands, and not presently under mineral lease on June 12, 2013, situated in Beauregard Parish, Louisiana, and more particularly described as follows: Beginning at a point having Coordinates of X = 1,274,820.00 and Y = 731,060.00; thence East 18,480.00 feet to a point having Coordinates of X = 1,293,300.00 and Y = 731,060.00; thence South 18,480.00 feet to a point having Coordinates of X = 1,293,300.00 and Y = 712,580.00; thence West 18,480.00 feet to a point having Coordinates of X = 1,274,820.00 and Y = 712,580.00; thence North 18,480.00 feet to the point of beginning, **LESS AND EXCEPT** any right, title, and interest in lands owned by and not under lease from the State of Louisiana, on behalf of the Beauregard Parish School Board, situated in Section 16, Township 5 South, Range 12 West, Beauregard Parish, Louisiana, contained within the above described tract, containing approximately **55 acres**, all as more particularly outlined on a plat on file in the Office of Mineral Resources, Department of Natural Resources. All bearings, distances and coordinates are based on Louisiana Coordinate System of 1927, (North or South Zone), where applicable.

NOTE: The above description of the Tract nominated for lease has been provided and corrected, where required, exclusively by the nomination party. Any mineral lease selected from this Tract and awarded by the Louisiana State Mineral and Energy Board shall be without warranty of any kind, either express, implied, or statutory, including, but not limited to, the implied warranties of merchantability and fitness for a particular purpose. Should the mineral lease awarded by the Louisiana State Mineral and Energy Board be subsequently modified, cancelled or abrogated due to the existence of conflicting leases, operating agreements, private claims or other future obligations or conditions which may affect all or any portion of the leased Tract, it shall not relieve the Lessee of the obligation to pay any bonus due thereon to the Louisiana State Mineral and Energy Board, nor shall the Louisiana State Mineral and Energy Board be obligated to refund any consideration paid by the Lessor prior to such modification, cancellation, or abrogation, including, but not limited to, bonuses, rentals and royalties.

Applicant: TENDER ENERGY, LLC

Bidder	Cash Payment	Price/Acre	Rental	Oil	Gas	Other

Legend

13060057

IMAGERY.DOQQ_2008_1M_CIR

BEAUREGARD PARISH

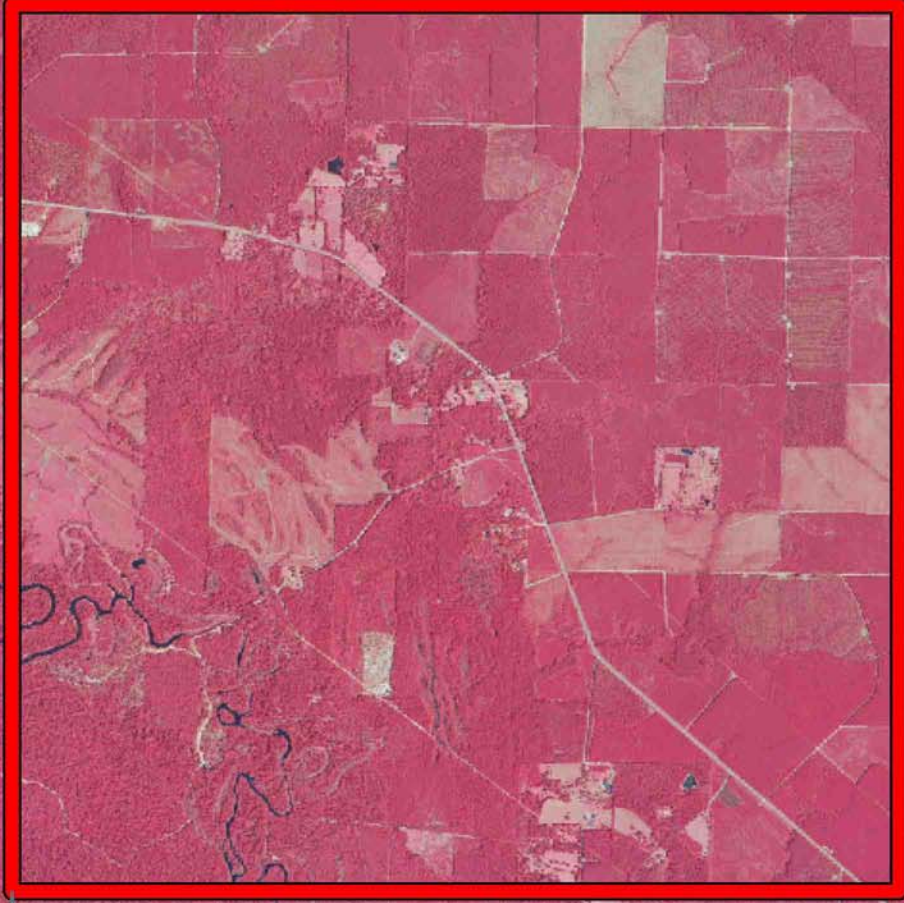
T4S - R12W

T5S - R12W

OLD RIVER

0 4,000 Feet

P.O.B.



TRACT 43248 - Beauregard Parish, Louisiana

All of the lands now or formerly constituting the beds and bottoms of all water bodies of every nature and description the title of which vests in the State of Louisiana, together with all islands arising therein and other lands formed by accretion or by reliction, where allowed by law, excepting tax adjudicated lands, and not presently under mineral lease on June 12, 2013, situated in Beauregard Parish, Louisiana, and more particularly described as follows: Beginning at a point having Coordinates of X = 1,274,820.00 and Y = 731,060.00; thence South 18,480.00 feet to a point having Coordinates of X = 1,274,820.00 and Y = 712,580.00; thence West approximately 13,703 feet to a point on the Eastern boundary of State Lease No. 2048, as amended; thence along the boundary of said State Lease No. 2048, as amended, the following courses: Northwesterly approximately 513 feet to a point, Northeasterly approximately 464 feet to a point, Northwesterly approximately 623 feet to a point, and Southwesterly approximately 1,909 feet to a point of intersection with an East-West line having a Coordinate of Y = 712,580.00; thence West approximately 4,595 feet to a point having Coordinates of X = 1,256,340.00 and Y = 712,580.00; thence North 18,480.00 feet to a point having Coordinates of X = 1,256,340.00 and Y = 731,060.00; thence East 18,480.00 feet to the point of beginning, **LESS AND EXCEPT** that portion, if any, of State Lease No. 2024, as amended, which may lie within the above described tract, containing approximately **173 acres**, **LESS AND EXCEPT** that portion thereof, if any, located West of the boundary line between the States of Texas and Louisiana as determined by the report of the Special Master and adjudicated by the Supreme Court of the United States in litigation styled **Texas v. Louisiana, et al No. 36 Original**, or as otherwise approved by said court, all as more particularly outlined on a plat on file in the Office of Mineral Resources, Department of Natural Resources. All bearings, distances and coordinates are based on Louisiana Coordinate System of 1927, (North or South Zone), where applicable.

NOTE: The above description of the Tract nominated for lease has been provided and corrected, where required, exclusively by the nomination party. Any mineral lease selected from this Tract and awarded by the Louisiana State Mineral and Energy Board shall be without warranty of any kind, either express, implied, or statutory, including, but not limited to, the implied warranties of merchantability and fitness for a particular purpose. Should the mineral lease awarded by the Louisiana State Mineral and Energy Board be subsequently modified, cancelled or abrogated due to the existence of conflicting leases, operating agreements, private claims or other future obligations or conditions which may affect all or any portion of the leased Tract, it shall not relieve the Lessee of the obligation to pay any bonus due thereon to the Louisiana State Mineral and Energy Board, nor shall the Louisiana State Mineral and Energy Board be obligated to refund any consideration paid by the Lessor prior to such modification, cancellation, or abrogation, including, but not limited to, bonuses, rentals and royalties.

Applicant: TENDER ENERGY, LLC

Bidder	Cash Payment	Price/Acre	Rental	Oil	Gas	Other

Legend

13060056

Active_Leases

IMAGERY.DOQQ_2004_1M

T5S - R12W

OLD RIVER

BEAUREGARD PARISH

P.O.B.

SABINE RIVER

T5S - R13W

SL 2048

0 4,000 Feet

TRACT 43249 - Beauregard Parish, Louisiana

All of the lands now or formerly constituting the beds and bottoms of all water bodies of every nature and description the title of which vests in the State of Louisiana, together with all islands arising therein and other lands formed by accretion or by reliction, where allowed by law, excepting tax adjudicated lands, and not presently under mineral lease on June 12, 2013, situated in Beauregard Parish, Louisiana, and more particularly described as follows: Beginning at a point having Coordinates of X = 1,263,320.00 and Y = 712,580.00; thence South 18,480.00 feet to a point having Coordinates of X = 1,263,320.00 and Y = 694,100.00; thence West 18,480.00 feet to a point having Coordinates of X = 1,244,840.00 and Y = 694,100.00; thence North 18,480.00 feet to a point having Coordinates of X = 1,244,840.00 and Y = 712,580.00; thence East approximately 16,095 feet to a point on the Western boundary of State Lease No. 2048, as amended; thence along the boundary of said State Lease No. 2048, as amended, the following courses: Southeasterly approximately 1,178 feet to a point, Northeasterly approximately 208 feet to a point, and Northwesterly approximately 725 feet to the point of intersection with an East-West line having a Coordinate of Y = 712,580.00; thence East approximately 2,203 feet to the point of beginning, **LESS AND EXCEPT** that portion, if any, of State Lease No. 2024, as amended, which may lie within the above described tract, containing approximately **167 acres, LESS AND EXCEPT** that portion thereof, if any, located West of the boundary line between the States of Texas and Louisiana as determined by the report of the Special Master and adjudicated by the Supreme Court of the United States in litigation styled **Texas v. Louisiana, et al No. 36 Original**, or as otherwise approved by said court, all as more particularly outlined on a plat on file in the Office of Mineral Resources, Department of Natural Resources. All bearings, distances and coordinates are based on Louisiana Coordinate System of 1927, (North or South Zone), where applicable.

NOTE: The above description of the Tract nominated for lease has been provided and corrected, where required, exclusively by the nomination party. Any mineral lease selected from this Tract and awarded by the Louisiana State Mineral and Energy Board shall be without warranty of any kind, either express, implied, or statutory, including, but not limited to, the implied warranties of merchantability and fitness for a particular purpose. Should the mineral lease awarded by the Louisiana State Mineral and Energy Board be subsequently modified, cancelled or abrogated due to the existence of conflicting leases, operating agreements, private claims or other future obligations or conditions which may affect all or any portion of the leased Tract, it shall not relieve the Lessee of the obligation to pay any bonus due thereon to the Louisiana State Mineral and Energy Board, nor shall the Louisiana State Mineral and Energy Board be obligated to refund any consideration paid by the Lessor prior to such modification, cancellation, or abrogation, including, but not limited to, bonuses, rentals and royalties.

Applicant: TENDER ENERGY, LLC

Bidder	Cash Payment	Price/Acre	Rental	Oil	Gas	Other

Legend

13060064

Active_Leases

IMAGERY.DOQQ_2008_1M_CIR

BEAUREGARD PARISH

T5S - R13W

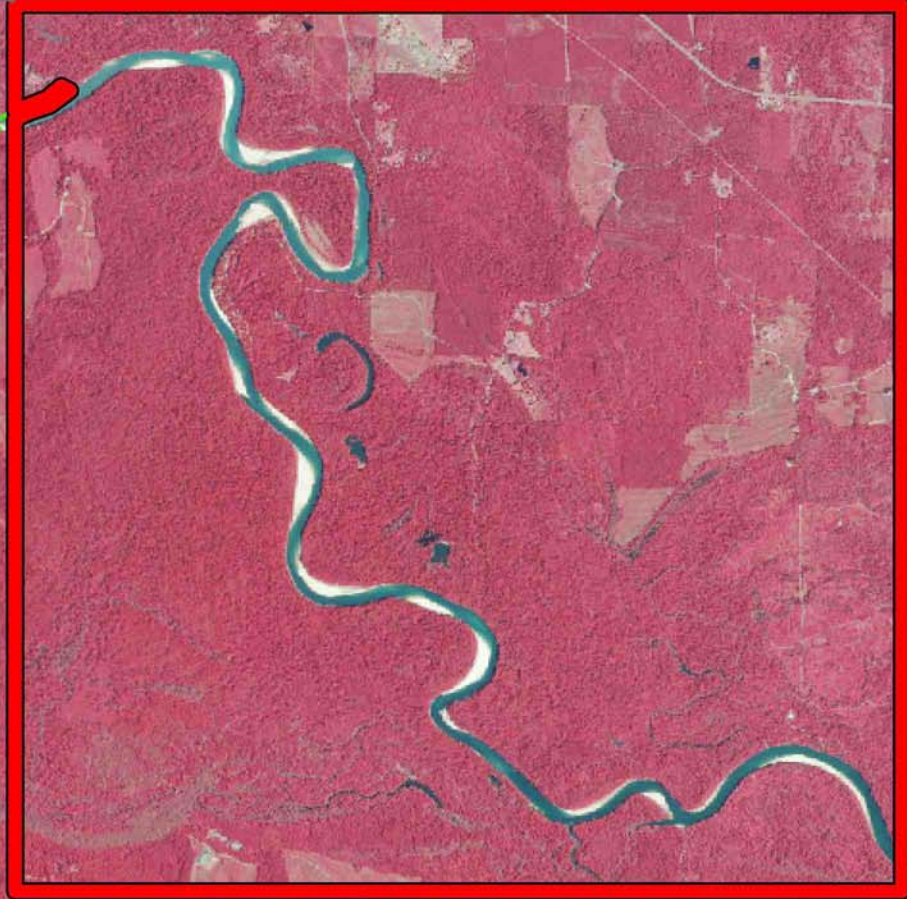
T6S - R13W

P.O.B.

SL 2048

SABINE RIVER

0 4,000 Feet



TRACT 43250 - Calcasieu Parish, Louisiana

All of the lands now or formerly constituting the beds and bottoms of all water bodies of every nature and description as to which title is vested in the State of Louisiana, together with all islands arising therein and other lands formed by accretion or by reliction, where allowed by law, excepting tax adjudicated lands, and not presently under mineral lease on June 12, 2013, situated in Calcasieu Parish, Louisiana, and more particularly described as follows: Beginning at a point having Coordinates of X = 1,441,760.00 and Y = 611,100.73, said point the Northwest corner of State Lease No. 20910; thence North 6,830.00 feet to a point having Coordinates of X = 1,441,760.00 and Y = 617,930.73; thence East 8,039.00 feet to a point having Coordinates of X = 1,449,799.00 and Y = 617,930.73; thence South 6,830.00 feet to a point having Coordinates of X = 1,449,799.00 and Y = 611,100.73, said point the Northeast corner of said State Lease No. 20910; thence West 8,039.00 feet along the Northern boundary of said State Lease No. 20910 to the point of beginning, **LESS AND EXCEPT** any right, title, and interest in lands owned by and not under lease from the State of Louisiana, on behalf of the Calcasieu Parish School Board, situated in Section 16, Township 8 South, Range 7 West, Calcasieu Parish, Louisiana, contained within the above described tract, containing approximately **40 acres**, all as more particularly outlined on a plat on file in the Office of Mineral Resources, Department of Natural Resources. All bearings, distances and coordinates are based on Louisiana Coordinate System of 1927, (North or South Zone), where applicable.

NOTE: The above description of the Tract nominated for lease has been provided and corrected, where required, exclusively by the nomination party. Any mineral lease selected from this Tract and awarded by the Louisiana State Mineral and Energy Board shall be without warranty of any kind, either express, implied, or statutory, including, but not limited to, the implied warranties of merchantability and fitness for a particular purpose. Should the mineral lease awarded by the Louisiana State Mineral and Energy Board be subsequently modified, cancelled or abrogated due to the existence of conflicting leases, operating agreements, private claims or other future obligations or conditions which may affect all or any portion of the leased Tract, it shall not relieve the Lessee of the obligation to pay any bonus due thereon to the Louisiana State Mineral and Energy Board, nor shall the Louisiana State Mineral and Energy Board be obligated to refund any consideration paid by the Lessor prior to such modification, cancellation, or abrogation, including, but not limited to, bonuses, rentals and royalties.

NOTE: The above Tract is located upon a restricted scenic river and all operations in this area must be conducted in strict conformity with the regulations of the Corps of Engineers, U.S. Army.

Applicant: ROBERT A. SCHROEDER, INC.

Bidder	Cash Payment	Price/Acre	Rental	Oil	Gas	Other

Legend

13060094



Active_Leases



IMAGERY.DOQQ_2008_1M_CIR

0 3,000 Feet



CALCASIEU PARISH

CALCASIEU RIVER

T8S - R7W

SL 20910

P.O.B.

TRACT 43251 - Calcasieu Parish, Louisiana

All of the lands now or formerly constituting the beds and bottoms of all water bodies of every nature and description as to which title is vested in the State of Louisiana, together with all islands arising therein and other lands formed by accretion or by reliction, where allowed by law, excepting tax adjudicated lands, and not presently under mineral lease on June 12, 2013, situated in Calcasieu Parish, Louisiana, and more particularly described as follows: Beginning at a point having Coordinates of X = 1,442,992.80 and Y = 606,000.00, said point being on the Western boundary of State Lease No. 20910; thence West 12,746.85 feet a point having Coordinates of X = 1,430,245.95 and Y = 606,000.00; thence North 5,800.00 feet to a point having Coordinates of feet X = 1,430,245.95 and Y = 611,800.00; thence East 6,144.33 feet to a point having Coordinates of X = 1,436,390.28 and Y = 611,800.00; thence South 1,606.27 feet to a point having Coordinates of X = 1,436,390.28 and Y = 610,193.73; thence East 5,369.72 feet to a point having Coordinates of X = 1,441,760.00 and Y = 610,193.73, said point being the Westernmost Southwest corner of said State Lease No. 20910; thence along the Southern and Western boundaries of said State Lease No. 20910 the following courses: East 1,303.92 feet to a point having Coordinates of X = 1,443,063.92 and Y = 610,193.73 and South 00 degrees 58 minutes 18 seconds West 4,194.33 feet to the point of beginning, containing approximately **56 acres**, all as more particularly outlined on a plat on file in the Office of Mineral Resources, Department of Natural Resources. All bearings, distances and coordinates are based on Louisiana Coordinate System of 1927, (North or South Zone), where applicable.

NOTE: The above description of the Tract nominated for lease has been provided and corrected, where required, exclusively by the nomination party. Any mineral lease selected from this Tract and awarded by the Louisiana State Mineral and Energy Board shall be without warranty of any kind, either express, implied, or statutory, including, but not limited to, the implied warranties of merchantability and fitness for a particular purpose. Should the mineral lease awarded by the Louisiana State Mineral and Energy Board be subsequently modified, cancelled or abrogated due to the existence of conflicting leases, operating agreements, private claims or other future obligations or conditions which may affect all or any portion of the leased Tract, it shall not relieve the Lessee of the obligation to pay any bonus due thereon to the Louisiana State Mineral and Energy Board, nor shall the Louisiana State Mineral and Energy Board be obligated to refund any consideration paid by the Lessor prior to such modification, cancellation, or abrogation, including, but not limited to, bonuses, rentals and royalties.

NOTE: The above Tract is located upon a restricted scenic river and all operations in this area must be conducted in strict conformity with the regulations of the Corps of Engineers, U.S. Army.

Applicant: ROBERT A. SCHROEDER, INC.

Bidder	Cash Payment	Price/Acre	Rental	Oil	Gas	Other

Legend

13060092



Active_Leases



IMAGERY.DOQQ_2008_1M_CIR

0 3,000 Feet



CALCASIEU PARISH

T8S - R7W

CALCASIEU RIVER

SL 20910

P.O.B.

TRACT 43252 - Calcasieu Parish, Louisiana

All of the lands now or formerly constituting the beds and bottoms of all water bodies of every nature and description as to which title is vested in the State of Louisiana, together with all islands arising therein and other lands formed by accretion or by reliction, where allowed by law, excepting tax adjudicated lands, and not presently under mineral lease on June 12, 2013, situated in Calcasieu Parish, Louisiana, and more particularly described as follows: Beginning at a point having Coordinates of X = 1,442,992.80 and Y = 606,000.00, said point being on the Western boundary of State Lease No. 20910; thence along the Southern and Western boundaries of said State Lease No. 20910 the following courses: East 2,707.20 feet to a point having Coordinates of X = 1,445,700.00 and Y = 606,000.00, and South 2,640.00 feet to a point having Coordinates of X = 1,445,700.00 and Y = 603,360.00; thence South 3,419.45 feet to a point having Coordinates of X = 1,445,700.00 and Y = 599,940.55, said point being the Northeast corner of State Lease No. 20675; thence West 5,932.01 feet on and along the Northern boundary of said State Lease No. 20675 to a point having Coordinates of X = 1,439,767.99 and Y = 599,940.55, said point being on the Eastern boundary of the Easternmost portion of State Lease No. 15691, as amended; thence North 13 degrees 16 minutes 46 seconds East 111.45 feet along said Eastern boundary of said Easternmost portion of said State Lease No. 15691, as amended, to a point having Coordinates of X = 1,439,793.59 and Y = 600,049.02, said point being the Northeast corner of said Easternmost portion of said State Lease No. 15691, as amended, said point also being the Southeast corner of State Lease No. 15690, as amended; thence along the Eastern, Northern and Western boundaries of said State Lease No. 15690, as amended, the following courses: North 13 degrees 16 minutes 36 seconds East 1,038.56 feet to a point having Coordinates of X = 1,440,032.10 and Y = 601,059.82, said point being the Northeast corner of said State Lease No. 15690, as amended; West 1,990.00 feet to a corner having Coordinates of X = 1,438,042.10 and Y = 601,059.82, said point being the Northwest corner of said State Lease No. 15690, as amended; South 13 degrees 16 minutes 37 seconds West 849.06 feet to a point having Coordinates of X = 1,437,847.11 and Y = 600,233.46; and South 20 degrees 13 minutes 54 seconds East 163.90 feet to a point having Coordinates of X = 1,437,903.79 and Y = 600,079.67, said point being the Southwest corner of said State Lease No. 15690, as amended, said point also being the Northwest corner of said State Lease No. 15691, as amended; thence South 20 degrees 14 minutes 03 seconds East 148.27 feet on and along the Western boundary of the Easternmost portion of said State Lease No. 15691, as amended, to a point having Coordinates of X = 1,437,955.07 and Y = 599,940.55, said point being on said Northern boundary of said State Lease No. 20675; thence West 2,325.66 feet on and along said Northern boundary of said State Lease No. 20675 to a point having Coordinates of X = 1,435,629.41 and Y = 599,940.55, said point being the Northeast corner of the Westernmost portion of said State Lease No. 15691, as amended; thence North 89 degrees 11 minutes 44 seconds West 1,450.00 feet along said Northern boundary of the said westernmost portion of said State Lease No. 15691, as amended, said point having Coordinates

of X = 1,434,179.55 and Y = 599,960.91, said point being the Northwest corner of said Westernmost portion of said State Lease No. 15691, as amended, said point also being on said Northern boundary of said State Lease No. 20675; thence West 3,933.60 feet along said Northern boundary of said State Lease No. 20675 to a point having Coordinates of X = 1,430,245.95 and Y = 599,960.91, said point being the Northwest corner of said State Lease No. 20675, said point also being on the Eastern boundary of State Lease No. 20911; thence North 4,076.99 feet on and along said Eastern boundary of said State Lease No. 20911 to a point having Coordinates of X = 1,430,245.95 and Y = 604,037.90, said point being the Northeast corner of said State Lease No. 20911; thence North 1,962.10 feet to a point having Coordinates of X = 1,430,245.95 and Y = 606,000.00; thence East 12,746.85 feet to the point of beginning, (This lease includes only waterbottoms claimed and owned by the state and specifically excludes any land which the state may claim or own and to which the mineral rights are vested in the state), containing approximately **87 acres**, all as more particularly outlined on a plat on file in the Office of Mineral Resources, Department of Natural Resources. All bearings, distances and coordinates are based on Louisiana Coordinate System of 1927, (North or South Zone), where applicable.

NOTE: The above description of the Tract nominated for lease has been provided and corrected, where required, exclusively by the nomination party. Any mineral lease selected from this Tract and awarded by the Louisiana State Mineral and Energy Board shall be without warranty of any kind, either express, implied, or statutory, including, but not limited to, the implied warranties of merchantability and fitness for a particular purpose. Should the mineral lease awarded by the Louisiana State Mineral and Energy Board be subsequently modified, cancelled or abrogated due to the existence of conflicting leases, operating agreements, private claims or other future obligations or conditions which may affect all or any portion of the leased Tract, it shall not relieve the Lessee of the obligation to pay any bonus due thereon to the Louisiana State Mineral and Energy Board, nor shall the Louisiana State Mineral and Energy Board be obligated to refund any consideration paid by the Lessor prior to such modification, cancellation, or abrogation, including, but not limited to, bonuses, rentals and royalties.

NOTE: The above Tract is located upon a restricted scenic river and all operations in this area must be conducted in strict conformity with the regulations of the Corps of Engineers, U.S. Army.

Applicant: ROBERT A. SCHROEDER, INC.

Bidder	Cash Payment	Price/Acre	Rental	Oil	Gas	Other

Legend

13060093



IMAGERY.DOQQ_2008_1M_CIR

0 3,000 Feet



CALCASIEU PARISH

T8S - R7W

SL 20910

P.O.B.



SL 20675

SL 15690

SL 15691

SL 15691

T9S - R7W

SL 20911

TRACT 43253 - Calcasieu Parish, Louisiana

All of the lands now or formerly constituting the beds and bottoms of all water bodies of every nature and description the title of which vests in the State of Louisiana, together with all islands arising therein and other lands formed by accretion or by reliction, where allowed by law, excepting tax adjudicated lands, and not presently under mineral lease on June 12, 2013, situated in Calcasieu Parish, Louisiana, and more particularly described as follows: Beginning at a point having Coordinates of X = 1,258,802.47 and Y = 532,780.00; thence South 10,384.92 feet to a point having Coordinates of X = 1,258,802.47 and Y = 522,395.08; thence West 18,479.47 feet to a point having Coordinates of X = 1,240,323.00 and Y = 522,395.08; thence North 00 degrees 26 minutes 25 seconds East 3,188.56 feet to a point having Coordinates of X = 1,240,347.50 and Y = 525,583.55; thence North 38 degrees 16 minutes 04 seconds East 9,180.31 feet to a point having Coordinates of X = 1,246,033.22 and Y = 532,791.23; thence South 89 degrees 56 minutes 59 seconds East 12,769.25 feet to the point of beginning, **LESS AND EXCEPT** any right, title, and interest in lands owned by and not under lease from the State of Louisiana, on behalf of the Calcasieu Parish School Board, situated in Section 16, Township 11 South, Range 13 West, Calcasieu Parish, Louisiana, contained within the above described tract, containing approximately **171 acres, LESS AND EXCEPT** that portion thereof, if any, located West of the boundary line between the States of Texas and Louisiana as determined by the report of the Special Master and adjudicated by the Supreme Court of the United States in litigation styled **Texas v. Louisiana, et al No. 36 Original**, or as otherwise approved by said court, all as more particularly outlined on a plat on file in the Office of Mineral Resources, Department of Natural Resources. All bearings, distances and coordinates are based on Louisiana Coordinate System of 1927, (North or South Zone), where applicable.

NOTE: The above description of the Tract nominated for lease has been provided and corrected, where required, exclusively by the nomination party. Any mineral lease selected from this Tract and awarded by the Louisiana State Mineral and Energy Board shall be without warranty of any kind, either express, implied, or statutory, including, but not limited to, the implied warranties of merchantability and fitness for a particular purpose. Should the mineral lease awarded by the Louisiana State Mineral and Energy Board be subsequently modified, cancelled or abrogated due to the existence of conflicting leases, operating agreements, private claims or other future obligations or conditions which may affect all or any portion of the leased Tract, it shall not relieve the Lessee of the obligation to pay any bonus due thereon to the Louisiana State Mineral and Energy Board, nor shall the Louisiana State Mineral and Energy Board be obligated to refund any consideration paid by the Lessor prior to such modification, cancellation, or abrogation, including, but not limited to, bonuses, rentals and royalties.

NOTE: The State of Louisiana does hereby reserve, and this lease shall be subject to, the imprescriptible right of surface use in the nature of a

servitude in favor of the Department of Natural Resources, including its Offices and Commissions, for the sole purpose of implementing, constructing, servicing and maintaining approved coastal zone management and/or restoration projects. Utilization of any and all rights derived under this lease by the mineral lessee, its agents, successors or assigns, shall not interfere with nor hinder the reasonable surface use by the Department of Natural Resources, its Offices or Commissions, as herein above reserved.

Applicant: PROLAND, L.L.C.

Bidder	Cash Payment	Price/Acre	Rental	Oil	Gas	Other

Legend

13060030

IMAGERY.DOQQ_2008_1M_CIR

CALCASIEU PARISH

T11S - R13W

P.O.B.

SABINE RIVER

3,000 Feet

0

TRACT 43254 - St. Bernard Parish, Louisiana

All of the lands now or formerly constituting the beds and bottoms of all water bodies of every nature and description as to which title is vested in the State of Louisiana, together with all islands arising therein and other lands formed by accretion or by reliction, where allowed by law, excepting tax adjudicated lands, and not presently under mineral lease on June 12, 2013, situated in St. Bernard Parish, Louisiana, and more particularly described as follows: Beginning at a point having Coordinates of X = 2,547,562.84 and Y = 504,358.87; thence South 11,088.00 feet to a point having Coordinates of X = 2,547,562.84 and Y = 493,270.87; thence West 9,821.00 feet to a point having Coordinates of X = 2,537,741.84 and Y = 493,270.87; thence North 11,088.00 feet to a point having Coordinates of X = 2,537,741.84 and Y = 504,358.87; thence East 9,821.00 feet to the point of beginning, containing approximately **2,499.89 acres**, all as more particularly outlined on a plat on file in the Office of Mineral Resources, Department of Natural Resources. All bearings, distances and coordinates are based on Louisiana Coordinate System of 1927, (North or South Zone), where applicable.

NOTE: The above description of the Tract nominated for lease has been provided and corrected, where required, exclusively by the nomination party. Any mineral lease selected from this Tract and awarded by the Louisiana State Mineral and Energy Board shall be without warranty of any kind, either express, implied, or statutory, including, but not limited to, the implied warranties of merchantability and fitness for a particular purpose. Should the mineral lease awarded by the Louisiana State Mineral and Energy Board be subsequently modified, cancelled or abrogated due to the existence of conflicting leases, operating agreements, private claims or other future obligations or conditions which may affect all or any portion of the leased Tract, it shall not relieve the Lessee of the obligation to pay any bonus due thereon to the Louisiana State Mineral and Energy Board, nor shall the Louisiana State Mineral and Energy Board be obligated to refund any consideration paid by the Lessor prior to such modification, cancellation, or abrogation, including, but not limited to, bonuses, rentals and royalties.

NOTE: The State of Louisiana does hereby reserve, and this lease shall be subject to, the imprescriptible right of surface use in the nature of a servitude in favor of the Department of Natural Resources, including its Offices and Commissions, for the sole purpose of implementing, constructing, servicing and maintaining approved coastal zone management and/or restoration projects. Utilization of any and all rights derived under this lease by the mineral lessee, its agents, successors or assigns, shall not interfere with nor hinder the reasonable surface use by the Department of Natural Resources, its Offices or Commissions, as herein above reserved.

NOTE: This tract is located in an area designated by the Louisiana Legislature or the Wildlife and Fisheries Commission as a Public Oyster

Seed Ground, Reservation, or area of Calcasieu or Sabine Lake. Proposed projects occurring in these areas will be evaluated on a case by case basis by Louisiana Department of Wildlife & Fisheries. Modifications to proposed project features including, but not limited to, access routes, well sites, flowlines, and appurtenant structures maybe required by the Louisiana Department of Wildlife and Fisheries. In addition, compensatory mitigation will be required to offset unavoidable habitat impacts.

Applicant: ROBERT A. SCHROEDER, INC.

Bidder	Cash Payment	Price/Acre	Rental	Oil	Gas	Other

ST BERNARD PARISH

LAKE BORGNE

P.O.B.

