

**TRACT 43255 - St. Bernard Parish, Louisiana**

All of the lands now or formerly constituting the beds and bottoms of all water bodies of every nature and description as to which title is vested in the State of Louisiana, together with all islands arising therein and other lands formed by accretion or by reliction, where allowed by law, excepting tax adjudicated lands, and not presently under mineral lease on June 12, 2013, situated in St. Bernard Parish, Louisiana, and more particularly described as follows: Beginning at a point having Coordinates of X = 2,547,562.84 and Y = 504,358.87; thence East 9,821.00 feet to a point having Coordinates of X = 2,557,383.84 and Y = 504,358.87; thence South 11,088.00 feet to a point having Coordinates of X = 2,557,383.84 and Y = 493,270.87; thence West 9,821.00 feet to a point having Coordinates of X = 2,547,562.84 and Y = 493,270.87; thence North 11,088.00 feet to the point of beginning, containing approximately **2,499.89 acres**, all as more particularly outlined on a plat on file in the Office of Mineral Resources, Department of Natural Resources. All bearings, distances and coordinates are based on Louisiana Coordinate System of 1927, (North or South Zone), where applicable.

NOTE: The above description of the Tract nominated for lease has been provided and corrected, where required, exclusively by the nomination party. Any mineral lease selected from this Tract and awarded by the Louisiana State Mineral and Energy Board shall be without warranty of any kind, either express, implied, or statutory, including, but not limited to, the implied warranties of merchantability and fitness for a particular purpose. Should the mineral lease awarded by the Louisiana State Mineral and Energy Board be subsequently modified, cancelled or abrogated due to the existence of conflicting leases, operating agreements, private claims or other future obligations or conditions which may affect all or any portion of the leased Tract, it shall not relieve the Lessee of the obligation to pay any bonus due thereon to the Louisiana State Mineral and Energy Board, nor shall the Louisiana State Mineral and Energy Board be obligated to refund any consideration paid by the Lessor prior to such modification, cancellation, or abrogation, including, but not limited to, bonuses, rentals and royalties.

NOTE: The State of Louisiana does hereby reserve, and this lease shall be subject to, the imprescriptible right of surface use in the nature of a servitude in favor of the Department of Natural Resources, including its Offices and Commissions, for the sole purpose of implementing, constructing, servicing and maintaining approved coastal zone management and/or restoration projects. Utilization of any and all rights derived under this lease by the mineral lessee, its agents, successors or assigns, shall not interfere with nor hinder the reasonable surface use by the Department of Natural Resources, its Offices or Commissions, as herein above reserved.

NOTE: This tract is located in an area designated by the Louisiana Legislature or the Wildlife and Fisheries Commission as a Public Oyster Seed Ground, Reservation, or area of Calcasieu or Sabine Lake. Proposed

projects occurring in these areas will be evaluated on a case by case basis by Louisiana Department of Wildlife & Fisheries. Modifications to proposed project features including, but not limited to, access routes, well sites, flowlines, and appurtenant structures maybe required by the Louisiana Department of Wildlife and Fisheries. In addition, compensatory mitigation will be required to offset unavoidable habitat impacts.

Applicant: ROBERT A. SCHROEDER, INC.

Bidder	Cash Payment	Price/Acre	Rental	Oil	Gas	Other

**Legend**

- 13060096
- Blocks
- Active Leases

NORTH LAKE BORGNE AREA

LB0006

ST BERNARD PARISH

LAKE BORGNE

P.O.B.



**TRACT 43256 - Calcasieu Parish, Louisiana**

All of the lands now or formerly constituting the beds and bottoms of all water bodies of every nature and description the title of which vests in the State of Louisiana, together with all islands arising therein and other lands formed by accretion or by reliction, where allowed by law, excepting tax adjudicated lands, and not presently under mineral lease on June 12, 2013, situated in Calcasieu Parish, Louisiana, and more particularly described as follows: Beginning at a point having Coordinates of X = 1,250,283.02 and Y = 522,395.08; thence South 00 degrees 29 minutes 23 seconds East 5,610.44 feet to a point having Coordinates of X = 1,250,330.97 and Y = 516,784.85; thence North 89 degrees 20 minutes 27 seconds West 10,008.63 feet to a point having Coordinates of X = 1,240,323.00 and Y = 516,900.00; thence North 5,495.08 feet to a point having Coordinates of X = 1,240,323.00 and Y = 522,395.08; thence East 9,960.02 feet to the point of beginning, containing approximately **95 acres, LESS AND EXCEPT** that portion thereof, if any, located West of the boundary line between the States of Texas and Louisiana as determined by the report of the Special Master and adjudicated by the Supreme Court of the United States in litigation styled **Texas v. Louisiana, et al No. 36 Original**, or as otherwise approved by said court, all as more particularly outlined on a plat on file in the Office of Mineral Resources, Department of Natural Resources. All bearings, distances and coordinates are based on Louisiana Coordinate System of 1927, (North or South Zone), where applicable.

NOTE: The above description of the Tract nominated for lease has been provided and corrected, where required, exclusively by the nomination party. Any mineral lease selected from this Tract and awarded by the Louisiana State Mineral and Energy Board shall be without warranty of any kind, either express, implied, or statutory, including, but not limited to, the implied warranties of merchantability and fitness for a particular purpose. Should the mineral lease awarded by the Louisiana State Mineral and Energy Board be subsequently modified, cancelled or abrogated due to the existence of conflicting leases, operating agreements, private claims or other future obligations or conditions which may affect all or any portion of the leased Tract, it shall not relieve the Lessee of the obligation to pay any bonus due thereon to the Louisiana State Mineral and Energy Board, nor shall the Louisiana State Mineral and Energy Board be obligated to refund any consideration paid by the Lessor prior to such modification, cancellation, or abrogation, including, but not limited to, bonuses, rentals and royalties.

NOTE: The State of Louisiana does hereby reserve, and this lease shall be subject to, the imprescriptible right of surface use in the nature of a servitude in favor of the Department of Natural Resources, including its Offices and Commissions, for the sole purpose of implementing, constructing, servicing and maintaining approved coastal zone management and/or restoration projects. Utilization of any and all rights derived under this lease by the mineral lessee, its agents, successors or assigns,

shall not interfere with nor hinder the reasonable surface use by the Department of Natural Resources, its Offices or Commissions, as herein above reserved.

Applicant: PROLAND, L.L.C.

Bidder	Cash Payment	Price/Acre	Rental	Oil	Gas	Other

Legend

13060032

Counties



IMAGERY.DOQQ\_2008\_1M\_CIR

CALCASIEU PARISH

T11S - R13W

P.O.B.

SABINE RIVER

2,000 Feet

0

**TRACT 43257 - Calcasieu Parish, Louisiana**

All of the lands now or formerly constituting the beds and bottoms of all water bodies of every nature and description the title of which vests in the State of Louisiana, together with all islands arising therein and other lands formed by accretion or by reliction, where allowed by law, excepting tax adjudicated lands, and not presently under mineral lease on June 12, 2013, situated in Calcasieu Parish, Louisiana, and more particularly described as follows: Beginning at a point having Coordinates of X = 1,258,802.47 and Y = 522,395.08; thence South 00 degrees 10 minutes 18 seconds West 5,707.54 feet to a point having Coordinates of X = 1,258,785.38 and Y = 516,687.57; thence North 89 degrees 20 minutes 27 seconds West 8,454.97 feet to a point having Coordinates of X = 1,250,330.97 and Y = 516,784.85; thence North 00 degrees 29 minutes 23 seconds West 5,610.44 feet to a point having Coordinates of X = 1,250,283.02 and Y = 522,395.08; thence East 8,519.45 feet to the point of beginning, containing approximately **52 acres, LESS AND EXCEPT** that portion thereof, if any, located West of the boundary line between the States of Texas and Louisiana as determined by the report of the Special Master and adjudicated by the Supreme Court of the United States in litigation styled **Texas v. Louisiana, et al No. 36 Original**, or as otherwise approved by said court, all as more particularly outlined on a plat on file in the Office of Mineral Resources, Department of Natural Resources. All bearings, distances and coordinates are based on Louisiana Coordinate System of 1927, (North or South Zone), where applicable.

NOTE: The above description of the Tract nominated for lease has been provided and corrected, where required, exclusively by the nomination party. Any mineral lease selected from this Tract and awarded by the Louisiana State Mineral and Energy Board shall be without warranty of any kind, either express, implied, or statutory, including, but not limited to, the implied warranties of merchantability and fitness for a particular purpose. Should the mineral lease awarded by the Louisiana State Mineral and Energy Board be subsequently modified, cancelled or abrogated due to the existence of conflicting leases, operating agreements, private claims or other future obligations or conditions which may affect all or any portion of the leased Tract, it shall not relieve the Lessee of the obligation to pay any bonus due thereon to the Louisiana State Mineral and Energy Board, nor shall the Louisiana State Mineral and Energy Board be obligated to refund any consideration paid by the Lessor prior to such modification, cancellation, or abrogation, including, but not limited to, bonuses, rentals and royalties.

NOTE: The State of Louisiana does hereby reserve, and this lease shall be subject to, the imprescriptible right of surface use in the nature of a servitude in favor of the Department of Natural Resources, including its Offices and Commissions, for the sole purpose of implementing, constructing, servicing and maintaining approved coastal zone management and/or restoration projects. Utilization of any and all rights derived under this lease by the mineral lessee, its agents, successors or assigns,

shall not interfere with nor hinder the reasonable surface use by the Department of Natural Resources, its Offices or Commissions, as herein above reserved.

Applicant: PROLAND, L.L.C.

Bidder	Cash Payment	Price/Acre	Rental	Oil	Gas	Other



Legend

13060031

IMAGERY.DOQQ\_2008\_1M\_CIR

0 2,000 Feet

CALCASIEU PARISH

T11S - R13W

P.O.B.

CONWAY BAYOU

SABINE RIVER

**TRACT 43258 - Calcasieu and Cameron Parishes, Louisiana**

All of the lands now or formerly constituting the beds and bottoms of all water bodies of every nature and description the title of which vests in the State of Louisiana, together with all islands arising therein and other lands formed by accretion or by reliction, where allowed by law, excepting tax adjudicated lands, and not presently under mineral lease on June 12, 2013, situated in Calcasieu and Cameron Parishes, Louisiana, and more particularly described as follows: Beginning at a point having Coordinates of X = 1,258,785.38 and Y = 516,687.57; thence South 00 degrees 09 minutes 59 seconds East 7,172.19 feet to a point having Coordinates of X = 1,258,806.19 and Y = 509,515.41; thence North 89 degrees 11 minutes 00 seconds West 18,475.60 feet to a point having Coordinates of X = 1,240,332.46 and Y = 509,778.74; thence North 00 degrees 04 minutes 34 seconds West 7,121.27 feet to a point having Coordinates of X = 1,240,323.00 and Y = 516,900.00; thence South 89 degrees 20 minutes 27 seconds East 18,463.60 feet to the point of beginning, containing approximately **216 acres, LESS AND EXCEPT** that portion thereof, if any, located West of the boundary line between the States of Texas and Louisiana as determined by the report of the Special Master and adjudicated by the Supreme Court of the United States in litigation styled **Texas v. Louisiana, et al No. 36 Original**, or as otherwise approved by said court, all as more particularly outlined on a plat on file in the Office of Mineral Resources, Department of Natural Resources. All bearings, distances and coordinates are based on Louisiana Coordinate System of 1927, (North or South Zone), where applicable.

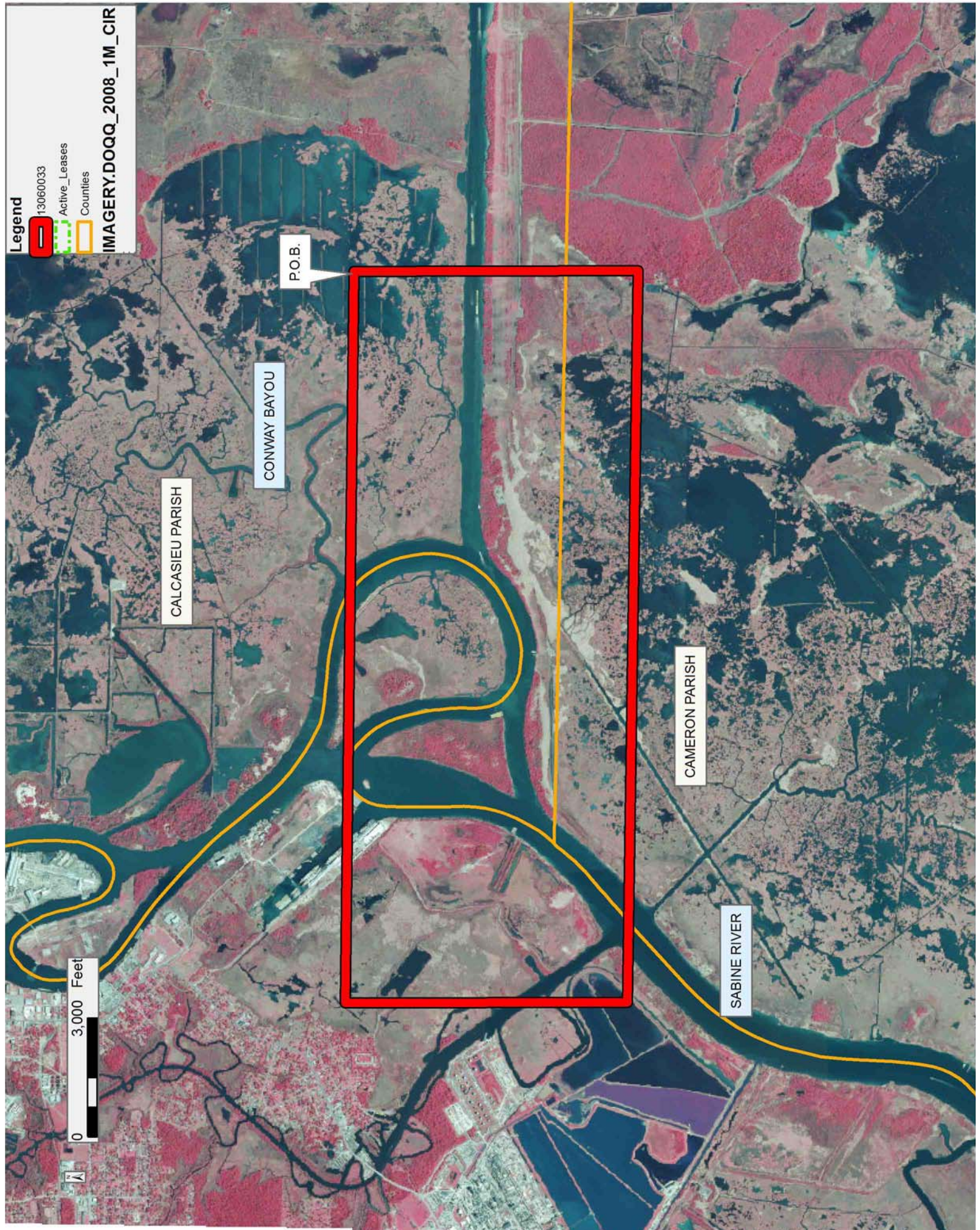
NOTE: The above description of the Tract nominated for lease has been provided and corrected, where required, exclusively by the nomination party. Any mineral lease selected from this Tract and awarded by the Louisiana State Mineral and Energy Board shall be without warranty of any kind, either express, implied, or statutory, including, but not limited to, the implied warranties of merchantability and fitness for a particular purpose. Should the mineral lease awarded by the Louisiana State Mineral and Energy Board be subsequently modified, cancelled or abrogated due to the existence of conflicting leases, operating agreements, private claims or other future obligations or conditions which may affect all or any portion of the leased Tract, it shall not relieve the Lessee of the obligation to pay any bonus due thereon to the Louisiana State Mineral and Energy Board, nor shall the Louisiana State Mineral and Energy Board be obligated to refund any consideration paid by the Lessor prior to such modification, cancellation, or abrogation, including, but not limited to, bonuses, rentals and royalties.

NOTE: The State of Louisiana does hereby reserve, and this lease shall be subject to, the imprescriptible right of surface use in the nature of a servitude in favor of the Department of Natural Resources, including its Offices and Commissions, for the sole purpose of implementing, constructing, servicing and maintaining approved coastal zone management and/or restoration projects. Utilization of any and all rights derived

under this lease by the mineral lessee, its agents, successors or assigns, shall not interfere with nor hinder the reasonable surface use by the Department of Natural Resources, its Offices or Commissions, as herein above reserved.

Applicant: PROLAND, L.L.C.

Bidder	Cash Payment	Price/Acre	Rental	Oil	Gas	Other



**TRACT 43259 - Cameron Parish, Louisiana**

All of the lands now or formerly constituting the beds and bottoms of all water bodies of every nature and description the title of which vests in the State of Louisiana, together with all islands arising therein and other lands formed by accretion or by reliction, where allowed by law, excepting tax adjudicated lands, and not presently under mineral lease on June 12, 2013, situated in Cameron Parish, Louisiana, and more particularly described as follows: Beginning at a point having Coordinates of X = 1,246,421.58 and Y = 509,691.94; thence South 12,503.49 feet to a point having Coordinates of X = 1,246,421.58 and Y = 497,188.45; thence North 89 degrees 27 minutes 40 seconds West 6,734.64 feet to a point having Coordinates of X = 1,239,687.24 and Y = 497,251.78; thence North 00 degrees 04 minutes 40 seconds East 3,362.55 feet to a point having Coordinates of X = 1,239,691.81 and Y = 500,614.34; thence West 8,006.57 feet to a point having Coordinates of X = 1,231,685.24 and Y = 500,614.34; thence North 35 degrees 34 minutes 28 seconds East 11,303.64 feet to a point having Coordinates of X = 1,238,261.25 and Y = 509,808.26; thence South 89 degrees 11 minutes 00 seconds East 8,161.16 feet to the point of beginning, containing approximately **124 acres, LESS AND EXCEPT** that portion thereof, if any, located West of the boundary line between the States of Texas and Louisiana as determined by the report of the Special Master and adjudicated by the Supreme Court of the United States in litigation styled **Texas v. Louisiana, et al No. 36 Original**, or as otherwise approved by said court, all as more particularly outlined on a plat on file in the Office of Mineral Resources, Department of Natural Resources. All bearings, distances and coordinates are based on Louisiana Coordinate System of 1927, (North or South Zone), where applicable.

NOTE: The above description of the Tract nominated for lease has been provided and corrected, where required, exclusively by the nomination party. Any mineral lease selected from this Tract and awarded by the Louisiana State Mineral and Energy Board shall be without warranty of any kind, either express, implied, or statutory, including, but not limited to, the implied warranties of merchantability and fitness for a particular purpose. Should the mineral lease awarded by the Louisiana State Mineral and Energy Board be subsequently modified, cancelled or abrogated due to the existence of conflicting leases, operating agreements, private claims or other future obligations or conditions which may affect all or any portion of the leased Tract, it shall not relieve the Lessee of the obligation to pay any bonus due thereon to the Louisiana State Mineral and Energy Board, nor shall the Louisiana State Mineral and Energy Board be obligated to refund any consideration paid by the Lessor prior to such modification, cancellation, or abrogation, including, but not limited to, bonuses, rentals and royalties.

NOTE: The State of Louisiana does hereby reserve, and this lease shall be subject to, the imprescriptible right of surface use in the nature of a servitude in favor of the Department of Natural Resources, including its Offices and Commissions, for the sole purpose of implementing,

constructing, servicing and maintaining approved coastal zone management and/or restoration projects. Utilization of any and all rights derived under this lease by the mineral lessee, its agents, successors or assigns, shall not interfere with nor hinder the reasonable surface use by the Department of Natural Resources, its Offices or Commissions, as herein above reserved.

Applicant: PROLAND, L.L.C.

Bidder	Cash Payment	Price/Acre	Rental	Oil	Gas	Other

Legend

13060034

Active\_Leases

IMAGERY.DOQQ\_2008\_1M\_CIR

T11S - R13W

CAMERON PARISH

P.O.B.

SABINE RIVER

0 4,000 Feet



**TRACT 43260 - Cameron Parish, Louisiana**

All of the lands now or formerly constituting the beds and bottoms of all water bodies of every nature and description the title of which vests in the State of Louisiana, together with all islands arising therein and other lands formed by accretion or by reliction, where allowed by law, excepting tax adjudicated lands, and not presently under mineral lease on June 12, 2013, situated in Cameron Parish, Louisiana, and more particularly described as follows: Beginning at a point having Coordinates of X = 1,246,421.58 and Y = 497,188.45; thence South 00 degrees 02 minutes 56 seconds West 7,041.32 feet to a point having Coordinates of X = 1,246,415.57 and Y = 490,147.13; thence North 89 degrees 40 minutes 27 seconds West 18,395.20 feet to a point having Coordinates of X = 1,228,020.67 and Y = 490,251.78; thence North 00 degrees 25 minutes 22 seconds East 3,800.36 feet to a point having Coordinates of X = 1,228,048.71 and Y = 494,052.04; thence North 28 degrees 59 minutes 36 seconds East 7,502.54 feet to a point having Coordinates of X = 1,231,685.24 and Y = 500,614.34; thence East 8,006.57 feet to a point having Coordinates of X = 1,239,691.81 and Y = 500,614.34; thence South 00 degrees 04 minutes 40 seconds West 3,362.55 feet to a point having Coordinates of X = 1,239,687.24 and Y = 497,251.78; thence South 89 degrees 27 minutes 40 seconds East 6,734.64 feet to the point of beginning, containing approximately **340 acres, LESS AND EXCEPT** that portion thereof, if any, located West of the boundary line between the States of Texas and Louisiana as determined by the report of the Special Master and adjudicated by the Supreme Court of the United States in litigation styled **Texas v. Louisiana, et al No. 36 Original**, or as otherwise approved by said court, all as more particularly outlined on a plat on file in the Office of Mineral Resources, Department of Natural Resources. All bearings, distances and coordinates are based on Louisiana Coordinate System of 1927, (North or South Zone), where applicable.

NOTE: The above description of the Tract nominated for lease has been provided and corrected, where required, exclusively by the nomination party. Any mineral lease selected from this Tract and awarded by the Louisiana State Mineral and Energy Board shall be without warranty of any kind, either express, implied, or statutory, including, but not limited to, the implied warranties of merchantability and fitness for a particular purpose. Should the mineral lease awarded by the Louisiana State Mineral and Energy Board be subsequently modified, cancelled or abrogated due to the existence of conflicting leases, operating agreements, private claims or other future obligations or conditions which may affect all or any portion of the leased Tract, it shall not relieve the Lessee of the obligation to pay any bonus due thereon to the Louisiana State Mineral and Energy Board, nor shall the Louisiana State Mineral and Energy Board be obligated to refund any consideration paid by the Lessor prior to such modification, cancellation, or abrogation, including, but not limited to, bonuses, rentals and royalties.



NOTE: The State of Louisiana does hereby reserve, and this lease shall be subject to, the imprescriptible right of surface use in the nature of a servitude in favor of the Department of Natural Resources, including its Offices and Commissions, for the sole purpose of implementing, constructing, servicing and maintaining approved coastal zone management and/or restoration projects. Utilization of any and all rights derived under this lease by the mineral lessee, its agents, successors or assigns, shall not interfere with nor hinder the reasonable surface use by the Department of Natural Resources, its Offices or Commissions, as herein above reserved.

Applicant: PROLAND, L.L.C.

Bidder	Cash Payment	Price/Acre	Rental	Oil	Gas	Other

Legend

13060035



Tracts

IMAGERY.DOQQ\_2008\_1M\_CIR

CAMERON PARISH

SABINE RIVER

P.O.B.

BLACK BAYOU

T13S - R14W

0 4,000 Feet

**TRACT 43261 - Cameron Parish, Louisiana**

All of the lands now or formerly constituting the beds and bottoms of all water bodies of every nature and description as to which title is vested in the State of Louisiana, together with all islands arising therein and other lands formed by accretion or by reliction, where allowed by law, excepting tax adjudicated lands, and not presently under mineral lease on June 12, 2013, situated in Cameron Parish, Louisiana, and more particularly described as follows: Beginning at a point having Coordinates of X = 1,551,183.00 and Y = 465,390.00; North 37 degrees 11 minutes 35 seconds East 7,199.31 feet to a point having Coordinates of X = 1,555,535.00 and Y = 471,125.00; thence South 69 degrees 06 minutes 01 seconds East 3,941.31 feet to a point having Coordinates of X = 1,559,217.00 and Y = 469,719.00; thence South 39 degrees 41 minutes 15 seconds East 1,802.38 feet to a point having Coordinates of X = 1,560,368.00 and Y = 468,332.00; thence South 1,900.51 feet to the Easternmost Northeast corner of State Lease No. 19965 having Coordinates of X = 1,560,368.00 and Y = 466,431.49; thence along the boundary of said State Lease No. 19965 the following courses and distances: North 34 degrees 33 minutes 02 seconds West 3,030.15 feet, North 68 degrees 40 minutes 17 seconds West 1,798.37 feet and South 24 degrees 42 minutes 35 seconds West 6,411.88 feet to its Southwest corner and a point on the boundary of State Lease No. 19938 having Coordinates of X = 1,554,294.01 and Y = 463,756.50; thence West approximately 84 feet along the boundary of said State Lease No. 19938 to its Northwest corner, also being a point on the boundary of State Lease No. 344, as amended, having a Coordinate of Y = 463,756.50; thence Southwesterly along the boundary of said State Lease No. 344 along an arc to the left with a radius of 3,000.00 feet to a point of intersection with a North South line having a Coordinate of X = 1,551,183.00; North approximately 4,357 feet to the point of beginning, **LESS AND EXCEPT** that portion, if any, of State Lease No. 344, as amended which may lie within the above described tract, containing approximately **608 acres**, all as more particularly outlined on a plat on file in the Office of Mineral Resources, Department of Natural Resources. All bearings, distances and coordinates are based on Louisiana Coordinate System of 1927, (North or South Zone), where applicable.

NOTE: The above description of the Tract nominated for lease has been provided and corrected, where required, exclusively by the nomination party. Any mineral lease selected from this Tract and awarded by the Louisiana State Mineral and Energy Board shall be without warranty of any kind, either express, implied, or statutory, including, but not limited to, the implied warranties of merchantability and fitness for a particular purpose. Should the mineral lease awarded by the Louisiana State Mineral and Energy Board be subsequently modified, cancelled or abrogated due to the existence of conflicting leases, operating agreements, private claims or other future obligations or conditions which may affect all or any portion of the leased Tract, it shall not relieve the Lessee of the obligation to pay any bonus due thereon to the Louisiana State Mineral and Energy Board, nor shall the Louisiana State Mineral and Energy Board be

obligated to refund any consideration paid by the Lessor prior to such modification, cancellation, or abrogation, including, but not limited to, bonuses, rentals and royalties.

NOTE: The State of Louisiana does hereby reserve, and this lease shall be subject to, the imprescriptible right of surface use in the nature of a servitude in favor of the Department of Natural Resources, including its Offices and Commissions, for the sole purpose of implementing, constructing, servicing and maintaining approved coastal zone management and/or restoration projects. Utilization of any and all rights derived under this lease by the mineral lessee, its agents, successors or assigns, shall not interfere with nor hinder the reasonable surface use by the Department of Natural Resources, its Offices or Commissions, as herein above reserved.

Applicant: ALLEN & KIRMSE, LTD.

Bidder	Cash Payment	Price/Acre	Rental	Oil	Gas	Other

Legend

13060080



Active\_Leases



IMAGERY.DOQQ\_2008\_1M\_CIR



CAMERON PARISH

GRAND LAKE

P.O.B.

SL 344

MALLARD BAY

**TRACT 43262 - Cameron Parish, Louisiana**

All of the lands now or formerly constituting the beds and bottoms of all water bodies of every nature and description as to which title is vested in the State of Louisiana, together with all islands arising therein and other lands formed by accretion or by reliction, where allowed by law, excepting tax adjudicated lands, and not presently under mineral lease on June 12, 2013, situated in Cameron Parish, Louisiana, and more particularly described as follows: Beginning at a point having Coordinates of X = 1,560,368.00 and Y = 468,332.00; thence South 69 degrees 07 minutes 10 seconds East 13,032.94 feet to a point having Coordinates of X = 1,572,545.00 and Y = 463,686.76; thence South 2,119.26 feet to a point having Coordinates of X = 1,572,545.00 and Y = 461,567.50; thence West 6,270.00 feet to a point having Coordinates of X = 1,566,275.00 and Y = 461,567.50; thence North 69 degrees 39 minutes 59 seconds West 992.41 feet to the Northeast corner of State Lease No. 19939 having Coordinates of X = 1,565,344.43 and Y = 461,912.35; thence North 69 degrees 39 minutes 59 seconds West 2,919.63 feet along the boundary of said State Lease No. 19939 to the Southeast corner of State Lease No. 19966 having Coordinates of X = 1,562,606.73 and Y = 462,926.88; thence along the boundary of said State Lease No. 19966 the following courses and distances: North 00 degrees 35 minutes 13 seconds West 257.24 feet and North 34 degrees 33 minutes 02 seconds West 3,942.81 feet to its Northernmost corner having Coordinates of X = 1,560,368.00 and Y = 466,431.49; thence North 1,900.51 feet to the point of beginning, containing approximately **901 acres**, all as more particularly outlined on a plat on file in the Office of Mineral Resources, Department of Natural Resources. All bearings, distances and coordinates are based on Louisiana Coordinate System of 1927, (North or South Zone), where applicable.

NOTE: The above description of the Tract nominated for lease has been provided and corrected, where required, exclusively by the nomination party. Any mineral lease selected from this Tract and awarded by the Louisiana State Mineral and Energy Board shall be without warranty of any kind, either express, implied, or statutory, including, but not limited to, the implied warranties of merchantability and fitness for a particular purpose. Should the mineral lease awarded by the Louisiana State Mineral and Energy Board be subsequently modified, cancelled or abrogated due to the existence of conflicting leases, operating agreements, private claims or other future obligations or conditions which may affect all or any portion of the leased Tract, it shall not relieve the Lessee of the obligation to pay any bonus due thereon to the Louisiana State Mineral and Energy Board, nor shall the Louisiana State Mineral and Energy Board be obligated to refund any consideration paid by the Lessor prior to such modification, cancellation, or abrogation, including, but not limited to, bonuses, rentals and royalties.

NOTE: The State of Louisiana does hereby reserve, and this lease shall be subject to, the imprescriptible right of surface use in the nature of a servitude in favor of the Department of Natural Resources, including its

Offices and Commissions, for the sole purpose of implementing, constructing, servicing and maintaining approved coastal zone management and/or restoration projects. Utilization of any and all rights derived under this lease by the mineral lessee, its agents, successors or assigns, shall not interfere with nor hinder the reasonable surface use by the Department of Natural Resources, its Offices or Commissions, as herein above reserved.

Applicant: ALLEN & KIRMSE, LTD.

Bidder	Cash Payment	Price/Acre	Rental	Oil	Gas	Other

Legend

13060082



Active\_Leases

IMAGERY.DOQQ\_2008\_1M\_CIR

0 3,000 Feet



CAMERON PARISH

T12S - R3W

P.O.B.

SL 19939

MALLARD BAY



**TRACT 43263 - Cameron Parish, Louisiana**

All of the lands now or formerly constituting the beds and bottoms of all water bodies of every nature and description as to which title is vested in the State of Louisiana, together with all islands arising therein and other lands formed by accretion or by reliction, where allowed by law, excepting tax adjudicated lands, and not presently under mineral lease on June 12, 2013, situated in Cameron Parish, Louisiana, and more particularly described as follows: Beginning at the Northeast corner of State Lease No. 20497, also being a point on the Southern boundary of State Lease No. 19938 having Coordinates of X = 1,555,503.00 and Y = 460,136.00; thence along the boundary of said State Lease No. 19938 the following courses and distances: East 2,885.00 feet, South 927.55 feet and East 360.54 feet to the Westernmost corner of State Lease No. 20042 having Coordinates of X = 1,558,748.54 and Y = 459,208.45; thence along the boundary of said State Lease No. 20042 the following courses and distances: South 33 degrees 58 minutes 55 seconds East 1,094.48 feet, South 53 degrees 06 minutes 20 seconds East 660.44 feet, South 00 degrees 42 minutes 06 seconds West 1,350.00 feet, South 89 degrees 17 minutes 54 seconds East 376.53 feet, South 89 degrees 17 minutes 51 seconds East 119.58 feet, South 89 degrees 17 minutes 54 seconds East 2,003.89 feet, North 00 degrees 42 minutes 06 seconds East 556.10 feet, South 89 degrees 17 minutes 54 seconds East 2,524.90 feet and North 00 degrees 42 minutes 06 seconds East 2,640.00 feet to its Easternmost Northeast corner and a point on the boundary of State Lease No. 19939 having Coordinates of X = 1,564,935.59 and Y = 459,688.82; thence along the boundary of said State Lease No. 19939 the following courses and distances: East 304.45 feet and North 02 degrees 41 minutes 17 seconds East 2,225.98 feet to its Northeast corner having Coordinates of X = 1,565,344.43 and Y = 461,912.35; thence South 69 degrees 39 minutes 59 seconds East 992.41 feet to a point having Coordinates of X = 1,566,275.00 and Y = 461,567.50; thence South 5,939.50 feet to a point having Coordinates of X = 1,566,275.00 and Y = 455,628.00; thence West 7,952.86 feet to the Southeast corner of said State Lease No. 20497 having Coordinates of X = 1,558,322.14 and Y = 455,628.00; thence along the boundary of said State Lease No. 20497 the following courses and distances: North 39 degrees 11 minutes 19 seconds West 4,461.53 feet and North 1,050.00 feet to the point of beginning, containing approximately **508 acres**, all as more particularly outlined on a plat on file in the Office of Mineral Resources, Department of Natural Resources. All bearings, distances and coordinates are based on Louisiana Coordinate System of 1927, (North or South Zone), where applicable.

NOTE: The above description of the Tract nominated for lease has been provided and corrected, where required, exclusively by the nomination party. Any mineral lease selected from this Tract and awarded by the Louisiana State Mineral and Energy Board shall be without warranty of any kind, either express, implied, or statutory, including, but not limited to, the implied warranties of merchantability and fitness for a particular purpose. Should the mineral lease awarded by the Louisiana State Mineral and Energy Board be subsequently modified, cancelled or abrogated due to

the existence of conflicting leases, operating agreements, private claims or other future obligations or conditions which may affect all or any portion of the leased Tract, it shall not relieve the Lessee of the obligation to pay any bonus due thereon to the Louisiana State Mineral and Energy Board, nor shall the Louisiana State Mineral and Energy Board be obligated to refund any consideration paid by the Lessor prior to such modification, cancellation, or abrogation, including, but not limited to, bonuses, rentals and royalties.

NOTE: The State of Louisiana does hereby reserve, and this lease shall be subject to, the imprescriptible right of surface use in the nature of a servitude in favor of the Department of Natural Resources, including its Offices and Commissions, for the sole purpose of implementing, constructing, servicing and maintaining approved coastal zone management and/or restoration projects. Utilization of any and all rights derived under this lease by the mineral lessee, its agents, successors or assigns, shall not interfere with nor hinder the reasonable surface use by the Department of Natural Resources, its Offices or Commissions, as herein above reserved.

Applicant: ALLEN & KIRMSE, LTD.

Bidder	Cash Payment	Price/Acre	Rental	Oil	Gas	Other

Legend

13060078



Active\_Leases



IMAGERY.DOQQ\_2008\_1M\_CIR



CAMERON PARISH

MALLARD BAY

SL 19939

SL 20042

SL 19938

P.O.B.

SL 20497

GRAND LAKE

**TRACT 43264 - Cameron Parish, Louisiana**

All of the lands now or formerly constituting the beds and bottoms of all water bodies of every nature and description as to which title is vested in the State of Louisiana, together with all islands arising therein and other lands formed by accretion or by reliction, where allowed by law, excepting tax adjudicated lands, and not presently under mineral lease on June 12, 2013, situated in Cameron Parish, Louisiana, and more particularly described as follows: Beginning at a point having Coordinates of X = 1,566,275.00 and Y = 461,567.50; thence East 6,270.00 feet to a point having Coordinates of X = 1,572,545.00 and Y = 461,567.50; thence South 10,879.50 feet to a point having Coordinates of X = 1,572,545.00 and Y = 450,688.00; thence West 6,270.00 feet to a point having Coordinates of X = 1,566,275.00 and Y = 450,688.00; thence North 10,879.50 feet to the point of beginning, **LESS AND EXCEPT** any right, title, and interest in lands owned by and not under lease from the State of Louisiana, on behalf of the Cameron Parish School Board, situated in Section 16, Township 13 South, Range 3 West, Cameron Parish, Louisiana, contained within the above described tract, containing approximately **829 acres**, all as more particularly outlined on a plat on file in the Office of Mineral Resources, Department of Natural Resources. All bearings, distances and coordinates are based on Louisiana Coordinate System of 1927, (North or South Zone), where applicable.

NOTE: The above description of the Tract nominated for lease has been provided and corrected, where required, exclusively by the nomination party. Any mineral lease selected from this Tract and awarded by the Louisiana State Mineral and Energy Board shall be without warranty of any kind, either express, implied, or statutory, including, but not limited to, the implied warranties of merchantability and fitness for a particular purpose. Should the mineral lease awarded by the Louisiana State Mineral and Energy Board be subsequently modified, cancelled or abrogated due to the existence of conflicting leases, operating agreements, private claims or other future obligations or conditions which may affect all or any portion of the leased Tract, it shall not relieve the Lessee of the obligation to pay any bonus due thereon to the Louisiana State Mineral and Energy Board, nor shall the Louisiana State Mineral and Energy Board be obligated to refund any consideration paid by the Lessor prior to such modification, cancellation, or abrogation, including, but not limited to, bonuses, rentals and royalties.

NOTE: The State of Louisiana does hereby reserve, and this lease shall be subject to, the imprescriptible right of surface use in the nature of a servitude in favor of the Department of Natural Resources, including its Offices and Commissions, for the sole purpose of implementing, constructing, servicing and maintaining approved coastal zone management and/or restoration projects. Utilization of any and all rights derived under this lease by the mineral lessee, its agents, successors or assigns, shall not interfere with nor hinder the reasonable surface use by the

Department of Natural Resources, its Offices or Commissions, as herein above reserved.

Applicant: ALLEN & KIRMSE, LTD.

Bidder	Cash Payment	Price/Acre	Rental	Oil	Gas	Other

Legend

13060081



IMAGERY.DOQQ\_2008\_1M\_CIR

0 3,000 Feet



CAMERON PARISH

MALLARD BAY

P.O.B.

UMBRELLA BAY

