

TRACT 43265 - Cameron Parish, Louisiana

All of the lands now or formerly constituting the beds and bottoms of all water bodies of every nature and description as to which title is vested in the State of Louisiana, together with all islands arising therein and other lands formed by accretion or by reliction, where allowed by law, excepting tax adjudicated lands, and not presently under mineral lease on June 12, 2013, situated in Cameron Parish, Louisiana, and more particularly described as follows: Beginning at the Southwest corner of State Lease No. 20497 having Coordinates of X = 1,551,183.00 and Y = 455,628.00; thence East 7,139.14 feet along the boundary of said State Lease No. 20497 to its Southeast corner having Coordinates of X = 1,558,322.14 and Y = 455,628.00; thence East 7,952.86 feet to a point having Coordinates of X = 1,566,275.00 and Y = 455,628.00; thence South 4,940.00 feet to a point having Coordinates of X = 1,566,275.00 and Y = 450,688.00; thence West 15,092.00 feet to a point having Coordinates of X = 1,551,183.00 and Y = 450,688.00; thence North 4,940.00 feet to the point of beginning, containing approximately **1,181 acres**, all as more particularly outlined on a plat on file in the Office of Mineral Resources, Department of Natural Resources. All bearings, distances and coordinates are based on Louisiana Coordinate System of 1927, (North or South Zone), where applicable.

NOTE: The above description of the Tract nominated for lease has been provided and corrected, where required, exclusively by the nomination party. Any mineral lease selected from this Tract and awarded by the Louisiana State Mineral and Energy Board shall be without warranty of any kind, either express, implied, or statutory, including, but not limited to, the implied warranties of merchantability and fitness for a particular purpose. Should the mineral lease awarded by the Louisiana State Mineral and Energy Board be subsequently modified, cancelled or abrogated due to the existence of conflicting leases, operating agreements, private claims or other future obligations or conditions which may affect all or any portion of the leased Tract, it shall not relieve the Lessee of the obligation to pay any bonus due thereon to the Louisiana State Mineral and Energy Board, nor shall the Louisiana State Mineral and Energy Board be obligated to refund any consideration paid by the Lessor prior to such modification, cancellation, or abrogation, including, but not limited to, bonuses, rentals and royalties.

NOTE: The State of Louisiana does hereby reserve, and this lease shall be subject to, the imprescriptible right of surface use in the nature of a servitude in favor of the Department of Natural Resources, including its Offices and Commissions, for the sole purpose of implementing, constructing, servicing and maintaining approved coastal zone management and/or restoration projects. Utilization of any and all rights derived under this lease by the mineral lessee, its agents, successors or assigns, shall not interfere with nor hinder the reasonable surface use by the Department of Natural Resources, its Offices or Commissions, as herein above reserved.

Applicant: ALLEN & KIRMSE, LTD.

Bidder	Cash Payment	Price/Acre	Rental	Oil	Gas	Other

Legend

13060079

Active_Leases

IMAGERY.DOQQ_2008_1M_CIR



CAMERON PARISH

SL 20497

P.O.B.

GRAND LAKE



TRACT 43266 - St. Charles Parish, Louisiana

All of the lands now or formerly constituting the beds and bottoms of all water bodies of every nature and description as to which title is vested in the State of Louisiana, together with all islands arising therein and other lands formed by accretion or by reliction, where allowed by law, excepting tax adjudicated lands, and not presently under mineral lease on June 12, 2013, situated in St. Charles Parish, Louisiana, and more particularly described as follows: Beginning at a point having Coordinates of X = 2,327,273.03 and Y = 388,667.65; thence North 87 degrees 42 minutes 11 seconds East 10,870.71 feet to a point having Coordinates of X = 2,338,135.00 and Y = 389,103.31; thence South 3,995.31 feet to the Northwest corner of State Lease No. 19207, also being the Northeast corner of State Lease No. 19199 having Coordinates of X = 2,338,135.00 and Y = 385,108.00; thence along the boundaries of said State Lease No. 19199 the following courses: West 1,832.35 feet to a point having Coordinates of X = 2,336,302.65 and Y = 385,108.00, South 16 degrees 44 minutes 09 seconds East 858.03 feet to a point having Coordinates of X = 2,336,549.73 and Y = 384,286.31, and North 72 degrees 05 minutes 07 seconds East 1,666.05 feet to its Southeast corner having Coordinates of X = 2,338,135.00 and Y = 384,798.79, said point also being a point on the Western boundary of State Lease No. 19232; thence South 1,400.37 feet along the Western boundary of said State Lease No. 19232 to a point being the Northeast corner of State Lease No. 20624 having Coordinates of X = 2,338,135.00 and Y = 383,398.42; thence along the boundaries of said State Lease No. 20624 the following courses: South 80 degrees 34 minutes 29 seconds West 2,164.22 feet to a point having Coordinates of X = 2,336,000.00 and Y = 383,044.00, South 12 degrees 33 minutes 41 seconds West 2,299.03 feet to a point having Coordinates of X = 2,335,500.00 and Y = 380,800.00, South 73 degrees 04 minutes 21 seconds East 2,404.16 feet to a point having Coordinates of X = 2,337,800.00 and Y = 380,100.00, and North 88 degrees 53 minutes 16 seconds East 335.06 feet to its Southeast corner, also being a point on the Western boundary of said State Lease No. 19232 having Coordinates of X = 2,338,135.00 and Y = 380,106.51; thence South 441.28 feet along the Western boundary of said State Lease No. 19232 to a point being the Northwest corner of State Lease No. 19206, also being the Northeast corner of State Lease No. 19200 having Coordinates of X = 2,338,135.00 and Y = 379,665.23; thence along the boundaries of said State Lease No. 19200 the following courses: North 85 degrees 57 minutes 27 seconds West 236.05 feet to a point having Coordinates of X = 2,337,899.54 and Y = 379,681.87, and South 03 degrees 56 minutes 50 seconds West 1,134.56 feet to a point being the Northeast corner of State Lease No. 20851 having Coordinates of X = 2,337,821.44 and Y = 378,550.00; thence West 2,623.62 feet along the North boundary of said State Lease No. 20851 to its Northwest corner also being a point on the East boundary of State Lease No. 19201 having Coordinates of X = 2,335,197.82 and Y = 378,550.00; thence along the boundaries of said State Lease No. 19201 the following courses: North 20 degrees 42 minutes 16 seconds West 1,880.44 feet to a point having Coordinates of X = 2,334,533.00 and Y = 380,309.00, and South 71 degrees 21 minutes 39 seconds West 1,720.23 feet to a point on the East boundary of State Lease

No. 20852 having Coordinates of X = 2,332,903.00 and Y = 379,759.20; thence North 743.80 feet to a point having Coordinates of X = 2,332,903.00 and Y = 380,503.00, and West 1,838.95 feet to a point on the East boundary of State Lease No. 20626 having Coordinates of X = 2,331,064.05 and Y = 380,503.00; thence North 00 degrees 52 minutes 42 seconds West 2,820.39 feet along the East boundary of said State Lease No. 20626 to its Northeast corner, also being a point on the South boundary of State Lease No. 20853 having Coordinates of X = 2,331,020.82 and Y = 383,323.06; thence along the boundaries of said State Lease No. 20853 the following courses: North 80 degrees 42 minutes 32 seconds East 845.27 feet to a point having Coordinates of X = 2,331,855.00 and Y = 383,459.53, North 1,906.47 feet to a point having Coordinates of X = 2,331,855.00 and Y = 385,366.00, West 2,213.00 feet to a point having Coordinates of X = 2,329,642.00 and Y = 385,366.00, and South 2,268.51 feet to its Southwest corner, also being a point on the North boundary of said State Lease No. 20626 having Coordinates of X = 2,329,642.00 and Y = 383,097.49; thence South 80 degrees 42 minutes 32 seconds West 2,400.47 feet to a point having Coordinates of X = 2,327,273.03 and Y = 382,709.93; thence North 5,957.72 feet to the point of beginning containing, approximately **1746.75 acres**, all as more particularly outlined on a plat on file in the Office of Mineral Resources, Department of Natural Resources. All bearings, distances and coordinates are based on Louisiana Coordinate System of 1927, (North or South Zone), where applicable.

NOTE: The above description of the Tract nominated for lease has been provided and corrected, where required, exclusively by the nomination party. Any mineral lease selected from this Tract and awarded by the Louisiana State Mineral and Energy Board shall be without warranty of any kind, either express, implied, or statutory, including, but not limited to, the implied warranties of merchantability and fitness for a particular purpose. Should the mineral lease awarded by the Louisiana State Mineral and Energy Board be subsequently modified, cancelled or abrogated due to the existence of conflicting leases, operating agreements, private claims or other future obligations or conditions which may affect all or any portion of the leased Tract, it shall not relieve the Lessee of the obligation to pay any bonus due thereon to the Louisiana State Mineral and Energy Board, nor shall the Louisiana State Mineral and Energy Board be obligated to refund any consideration paid by the Lessor prior to such modification, cancellation, or abrogation, including, but not limited to, bonuses, rentals and royalties.

NOTE: The State of Louisiana does hereby reserve, and this lease shall be subject to, the imprescriptible right of surface use in the nature of a servitude in favor of the Department of Natural Resources, including its Offices and Commissions, for the sole purpose of implementing, constructing, servicing and maintaining approved coastal zone management and/or restoration projects. Utilization of any and all rights derived under this lease by the mineral lessee, its agents, successors or assigns, shall not interfere with nor hinder the reasonable surface use by the

Department of Natural Resources, its Offices or Commissions, as herein above reserved.

Applicant: LARRY S. MINTER, INC.

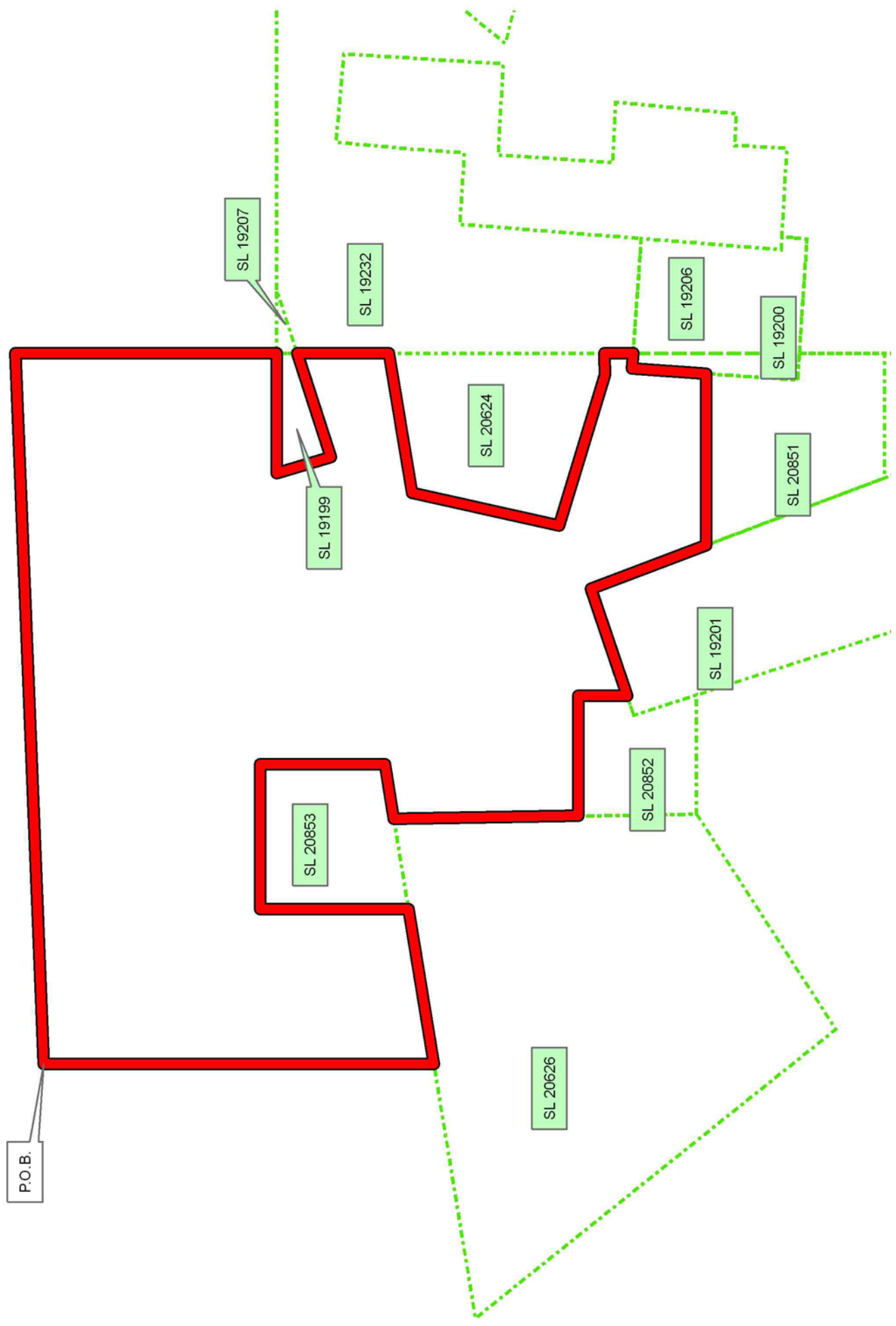
Bidder	Cash Payment	Price/Acre	Rental	Oil	Gas	Other

13060027
Active_Lease



ST CHARLES PARISH

LAKE SALVADOR



TRACT 43267 - Lafourche and St. Charles Parishes, Louisiana

All of the lands now or formerly constituting the beds and bottoms of all water bodies of every nature and description as to which title is vested in the State of Louisiana, together with all islands arising therein and other lands formed by accretion or by reliction, where allowed by law, excepting tax adjudicated lands, and not presently under mineral lease on June 12, 2013, situated in Lafourche and St. Charles Parishes, Louisiana, and more particularly described as follows: Beginning at a point having Coordinates of X = 2,338,135.00 and Y = 389,103.31; thence North 87 degrees 42 minutes 11 seconds East 10,769.91 feet to a point having Coordinates of X = 2,348,896.26 and Y = 389,534.93; thence South 00 degrees 19 minutes 47 seconds East 16,235.20 feet to a point having Coordinates of X = 2,348,989.65 and Y = 373,300.00; thence West 3,479.65 feet to the Southeast corner of State Lease No. 19232 having Coordinates of X = 2,345,510.00 and Y = 373,300.00; thence North 7,622.61 feet along the East boundary of said State Lease No. 19232 to the Southeast corner of State Lease No. 19204 having Coordinates of X = 2,345,510.00 and Y = 380,922.61; thence continue North 1,023.13 feet along the East boundary of said State Lease No. 19204 to its Northeast corner also being the Southeast corner of State Lease No. 19203 having Coordinates of X = 2,345,510.00 and Y = 381,945.74; thence continue North 1,807.05 feet along the East boundary of said State Lease No. 19203 to its Northeast corner also a point on the East boundary of said State Lease No. 19232 having Coordinates of X = 2,345,510.00 and Y = 383,752.79; thence along the boundaries of said State Lease No. 19232 the following courses: North 1,355.21 feet to a point having Coordinates of X = 2,345,510.00 and Y = 385,108.00 and West 6,418.50 feet to the East corner of State Lease No. 19207 having Coordinates of X = 2,339,091.50 and Y = 385,108.00; thence continue West 956.50 feet along the North boundary of said State Lease No. 19207 to its Northwest corner also being the Northeast corner of State Lease No. 19199 having Coordinates of X = 2,338,135.00 and Y = 385,108.00; thence North 3,995.31 feet to the point of beginning, **LESS AND EXCEPT** all that portion of State Lease No. 20854 which lies entirely within the above described tract, being more fully described as follows: Commencing at a point being the point of beginning of the above described tract having Coordinates of X = 2,338,135.00 and Y = 389,103.31; thence South 76 degrees 15 minutes 07 seconds East 5,936.91 feet to a point having Coordinates of X = 2,343,901.81 and Y = 387,692.38, being the point of beginning of said State Lease No. 20854; thence South 89 degrees 37 minutes 16 seconds East 2,964.40 feet to a point having Coordinates of X = 2,346,866.15 and Y = 387,672.78; thence South 00 degrees 12 minutes 31 seconds East 2,307.78 feet to a point having Coordinates of X = 2,346,874.54 and Y = 385,365.01; thence North 89 degrees 21 minutes 50 seconds West 2,963.11 feet to a point having Coordinates of X = 2,343,911.61 and Y = 385,397.91; thence North 00 degrees 14 minutes 41 seconds West 2,294.49 feet to a point of beginning, the nominated tract containing approximately **1819.12 acres**, all as more particularly outlined on a plat on file in the Office of Mineral Resources, Department of Natural Resources. All bearings, distances and coordinates are based on

Louisiana Coordinate System of 1927, (North or South Zone), where applicable.

NOTE: The above description of the Tract nominated for lease has been provided and corrected, where required, exclusively by the nomination party. Any mineral lease selected from this Tract and awarded by the Louisiana State Mineral and Energy Board shall be without warranty of any kind, either express, implied, or statutory, including, but not limited to, the implied warranties of merchantability and fitness for a particular purpose. Should the mineral lease awarded by the Louisiana State Mineral and Energy Board be subsequently modified, cancelled or abrogated due to the existence of conflicting leases, operating agreements, private claims or other future obligations or conditions which may affect all or any portion of the leased Tract, it shall not relieve the Lessee of the obligation to pay any bonus due thereon to the Louisiana State Mineral and Energy Board, nor shall the Louisiana State Mineral and Energy Board be obligated to refund any consideration paid by the Lessor prior to such modification, cancellation, or abrogation, including, but not limited to, bonuses, rentals and royalties.

NOTE: The State of Louisiana does hereby reserve, and this lease shall be subject to, the imprescriptible right of surface use in the nature of a servitude in favor of the Department of Natural Resources, including its Offices and Commissions, for the sole purpose of implementing, constructing, servicing and maintaining approved coastal zone management and/or restoration projects. Utilization of any and all rights derived under this lease by the mineral lessee, its agents, successors or assigns, shall not interfere with nor hinder the reasonable surface use by the Department of Natural Resources, its Offices or Commissions, as herein above reserved.

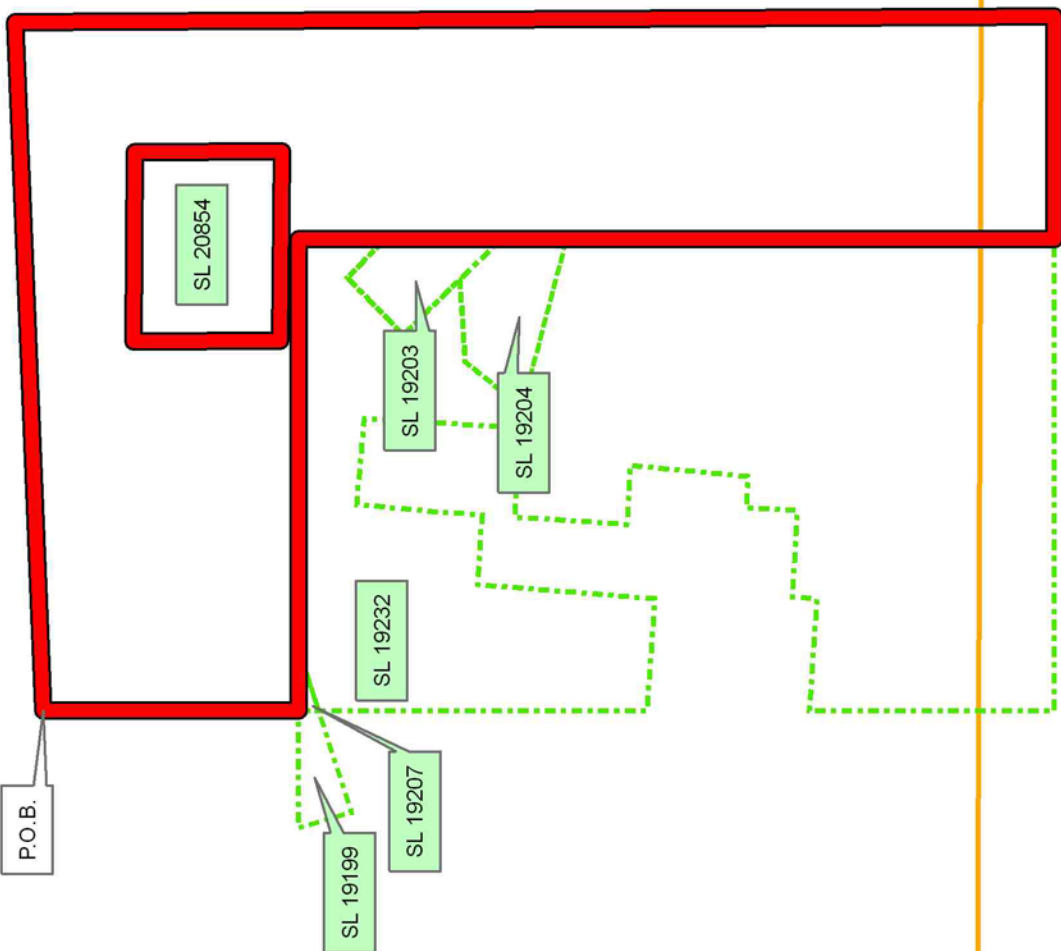
Applicant: LARRY S. MINTER, INC.

Bidder	Cash Payment	Price/Acre	Rental	Oil	Gas	Other

13060025
 Active_Lease
 Counties



ST CHARLES PARISH
 LAKE SALVADOR



LAFOURCHE PARISH

TRACT 43268 - St. Charles Parish, Louisiana

All of the lands now or formerly constituting the beds and bottoms of all water bodies of every nature and description as to which title is vested in the State of Louisiana, together with all islands arising therein and other lands formed by accretion or by reliction, where allowed by law, excepting tax adjudicated lands, and not presently under mineral lease on June 12, 2013, situated in St. Charles Parish, Louisiana, and more particularly described as follows: Beginning at a point having Coordinates of X = 2,320,876.93 and Y = 388,411.11; thence North 87 degrees 42 minutes 11 seconds East 6,401.24 feet to a point having Coordinates of X = 2,327,273.03 and Y = 388,667.65; thence South 5,957.72 feet to a point on the North boundary of State Lease No. 20626 having Coordinates of X = 2,327,273.03 and Y = 382,709.93; thence along the boundaries of said State Lease No. 20626 the following courses: South 80 degrees 42 minutes 32 seconds West 3,936.42 feet to a point having Coordinates of X = 2,323,388.25 and Y = 382,074.39 and South 38 degrees 43 minutes 38 seconds East 652.05 feet to the Northeast corner of State Lease No. 20643 having Coordinates of X = 2,323,796.18 and Y = 381,565.71; thence North 89 degrees 47 minutes 46 seconds West 10.68 feet along the North boundary of said State Lease No. 20643 to its Northwest corner also being the Northeast corner of State Lease No. 20850 having Coordinates of X = 2,323,785.50 and Y = 318,565.75; thence West 7,081.24 feet along the boundary of said State Lease No. 20850 to its Northwest corner, also being the Northeast corner of State Lease No. 21058 having Coordinates of X = 2,316,704.26 and Y = 381,565.75; thence West 3,746.63 feet along the boundary of said State Lease No. 21058 to its Northwest corner having Coordinates of X = 2,312,957.63 and Y = 381,565.75; thence North 2,532.79 feet to a point having Coordinates of X = 2,312,957.63 and Y = 384,098.54; thence East 79.60 feet to a point having Coordinates of X = 2,313,037.23 and Y = 384,098.54; thence North 61 degrees 11 minutes 06 seconds East 8,947.58 feet to the point of beginning, containing approximately **1801.19 acres**, all as more particularly outlined on a plat on file in the Office of Mineral Resources, Department of Natural Resources. All bearings, distances and coordinates are based on Louisiana Coordinate System of 1927, (North or South Zone), where applicable.

NOTE: The above description of the Tract nominated for lease has been provided and corrected, where required, exclusively by the nomination party. Any mineral lease selected from this Tract and awarded by the Louisiana State Mineral and Energy Board shall be without warranty of any kind, either express, implied, or statutory, including, but not limited to, the implied warranties of merchantability and fitness for a particular purpose. Should the mineral lease awarded by the Louisiana State Mineral and Energy Board be subsequently modified, cancelled or abrogated due to the existence of conflicting leases, operating agreements, private claims or other future obligations or conditions which may affect all or any portion of the leased Tract, it shall not relieve the Lessee of the obligation to pay any bonus due thereon to the Louisiana State Mineral and Energy Board, nor shall the Louisiana State Mineral and Energy Board be

obligated to refund any consideration paid by the Lessor prior to such modification, cancellation, or abrogation, including, but not limited to, bonuses, rentals and royalties.

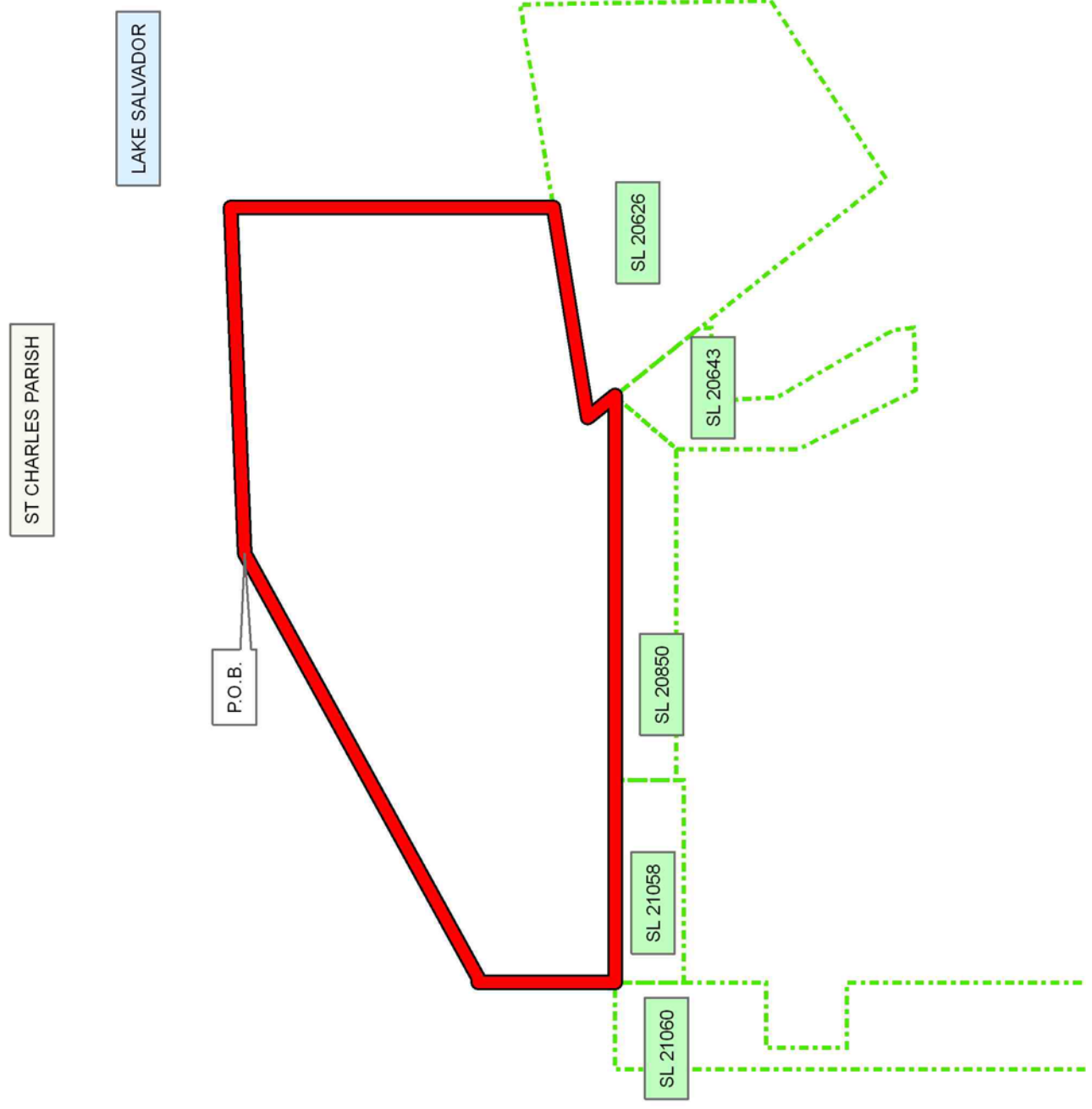
NOTE: The State of Louisiana does hereby reserve, and this lease shall be subject to, the imprescriptible right of surface use in the nature of a servitude in favor of the Department of Natural Resources, including its Offices and Commissions, for the sole purpose of implementing, constructing, servicing and maintaining approved coastal zone management and/or restoration projects. Utilization of any and all rights derived under this lease by the mineral lessee, its agents, successors or assigns, shall not interfere with nor hinder the reasonable surface use by the Department of Natural Resources, its Offices or Commissions, as herein above reserved.

Applicant: LARRY S. MINTER, INC.

Bidder	Cash Payment	Price/Acre	Rental	Oil	Gas	Other

Legend

13060026
Active_Leases



TRACT 43269 - Lafourche and St. Charles Parishes, Louisiana

All of the lands now or formerly constituting the beds and bottoms of all water bodies of every nature and description as to which title is vested in the State of Louisiana, together with all islands arising therein and other lands formed by accretion or by reliction, where allowed by law, excepting tax adjudicated lands, and not presently under mineral lease on June 12, 2013, situated in Lafourche and St. Charles Parishes, Louisiana, and more particularly described as follows: Beginning at the Southwest corner of State Lease No. 21065 having Coordinates of X = 2,335,391.67 and Y = 371,002.00; thence East 1,701.33 feet along the boundary of said State Lease No. 21065 to its Southeast corner and the Southwest corner of State Lease No. 19201 having Coordinates of X = 2,337,093.00 and Y = 371,002.00; thence along the boundary of said State Lease No. 19201 the following courses and distances: North 73 degrees 38 minutes 34 seconds East 898.36 feet and North 20 degrees 42 minutes 16 seconds West 4,884.45 feet to the Southwest corner of State Lease No. 20851 having Coordinates of X = 2,336,228.13 and Y = 375,824.00; thence East 1,906.87 feet along the boundary of said State Lease No. 20851 to its Southeast corner and a point on the boundary of State Lease No. 19232 having Coordinates of X = 2,338,135.00 and Y = 375,824.00; thence along the boundary of said State Lease No. 19232 the following courses and distances: South 2,524.00 feet and East 7,375.00 feet to its Southeast corner having Coordinates of X = 2,345,510.00 and Y = 373,300.00; thence East 3,479.65 feet to a point having Coordinates of X = 2,348,989.65 and Y = 373,300.00; thence South 7,300.00 feet to a point having Coordinates of X = 2,348,989.65 and Y = 366,000.00; thence West 13,597.98 feet to a point having Coordinates of X = 2,335,391.67 and Y = 366,000.00; thence North 5,002.00 feet to the point of beginning, containing approximately **2,247.09 acres**, all as more particularly outlined on a plat on file in the Office of Mineral Resources, Department of Natural Resources. All bearings, distances and coordinates are based on Louisiana Coordinate System of 1927, (North or South Zone), where applicable.

NOTE: The above description of the Tract nominated for lease has been provided and corrected, where required, exclusively by the nomination party. Any mineral lease selected from this Tract and awarded by the Louisiana State Mineral and Energy Board shall be without warranty of any kind, either express, implied, or statutory, including, but not limited to, the implied warranties of merchantability and fitness for a particular purpose. Should the mineral lease awarded by the Louisiana State Mineral and Energy Board be subsequently modified, cancelled or abrogated due to the existence of conflicting leases, operating agreements, private claims or other future obligations or conditions which may affect all or any portion of the leased Tract, it shall not relieve the Lessee of the obligation to pay any bonus due thereon to the Louisiana State Mineral and Energy Board, nor shall the Louisiana State Mineral and Energy Board be obligated to refund any consideration paid by the Lessor prior to such modification, cancellation, or abrogation, including, but not limited to, bonuses, rentals and royalties.

NOTE: The State of Louisiana does hereby reserve, and this lease shall be subject to, the imprescriptible right of surface use in the nature of a servitude in favor of the Department of Natural Resources, including its Offices and Commissions, for the sole purpose of implementing, constructing, servicing and maintaining approved coastal zone management and/or restoration projects. Utilization of any and all rights derived under this lease by the mineral lessee, its agents, successors or assigns, shall not interfere with nor hinder the reasonable surface use by the Department of Natural Resources, its Offices or Commissions, as herein above reserved.

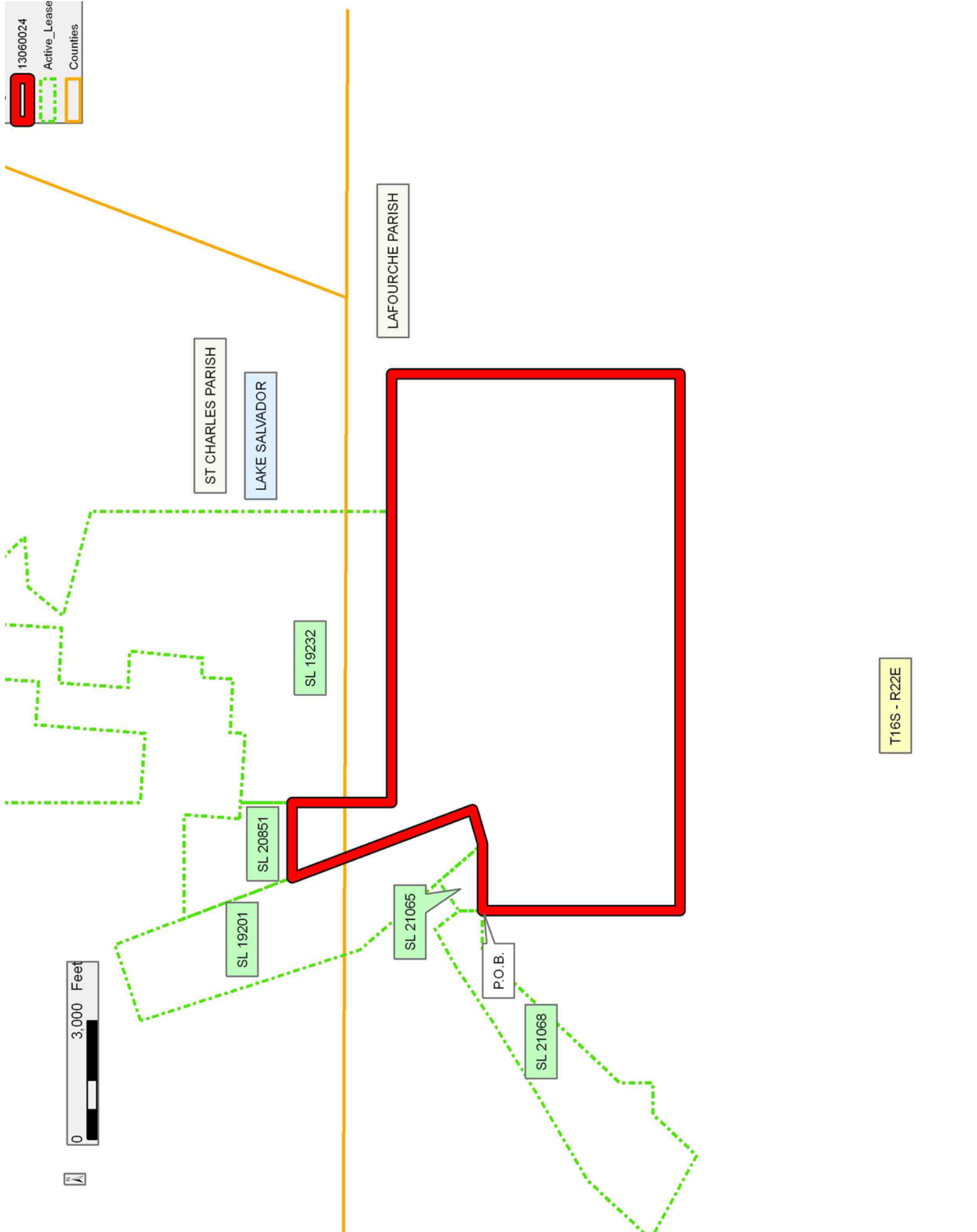
Applicant: LARRY S. MINTER, INC.

Bidder	Cash Payment	Price/Acre	Rental	Oil	Gas	Other

13060024

Active_Lease

Counties



TRACT 43270 - Lafourche Parish, Louisiana

All of the lands now or formerly constituting the beds and bottoms of all water bodies of every nature and description as to which title is vested in the State of Louisiana, together with all islands arising therein and other lands formed by accretion or by reliction, where allowed by law, excepting tax adjudicated lands, and not presently under mineral lease on June 12, 2013, situated in Lafourche Parish, Louisiana, and more particularly described as follows: Beginning at the Southernmost Southwest corner of State Lease No. 21063 having Coordinates of X = 2,324,409.00 and Y = 374,133.00; thence East 1,696.95 feet along the boundary of said State Lease No. 21063 to its Southeast corner and the Southwest corner of State Lease No. 21064 having Coordinates of X = 2,326,105.95 and Y = 374,133.00; thence East 1,696.96 feet along the boundary of said State Lease No. 21064 to its Southeast corner and the Southwest corner of State Lease No. 20856 having Coordinates of X = 2,327,802.91 and Y = 374,133.00; thence East 3,229.74 feet along the boundary of said State Lease No. 20856 to the Northernmost Northwest corner of State Lease No. 21062 having Coordinates of X = 2,331,032.65 and Y = 374,133.00; thence along the boundary of said State Lease No. 21062 the following courses and distances: South 733.00 feet, South 35 degrees 03 minutes 11 seconds West 223.38 feet, South 57 degrees 08 minutes 30 seconds West 2,198.51 feet and West 1,892.87 feet to its Southernmost Northwest corner and a point on the boundary of State Lease No. 20877 having Coordinates of X = 2,327,164.70 and Y = 372,024.30; thence along the boundary of said State Lease No. 20877 the following courses and distances: North 429.07 feet, West 2,755.70 feet, and North 1,679.63 feet to the point of beginning, containing approximately **264.43 acres**, all as more particularly outlined on a plat on file in the Office of Mineral Resources, Department of Natural Resources. All bearings, distances and coordinates are based on Louisiana Coordinate System of 1927, (North or South Zone), where applicable.

NOTE: The above description of the Tract nominated for lease has been provided and corrected, where required, exclusively by the nomination party. Any mineral lease selected from this Tract and awarded by the Louisiana State Mineral and Energy Board shall be without warranty of any kind, either express, implied, or statutory, including, but not limited to, the implied warranties of merchantability and fitness for a particular purpose. Should the mineral lease awarded by the Louisiana State Mineral and Energy Board be subsequently modified, cancelled or abrogated due to the existence of conflicting leases, operating agreements, private claims or other future obligations or conditions which may affect all or any portion of the leased Tract, it shall not relieve the Lessee of the obligation to pay any bonus due thereon to the Louisiana State Mineral and Energy Board, nor shall the Louisiana State Mineral and Energy Board be obligated to refund any consideration paid by the Lessor prior to such modification, cancellation, or abrogation, including, but not limited to, bonuses, rentals and royalties.

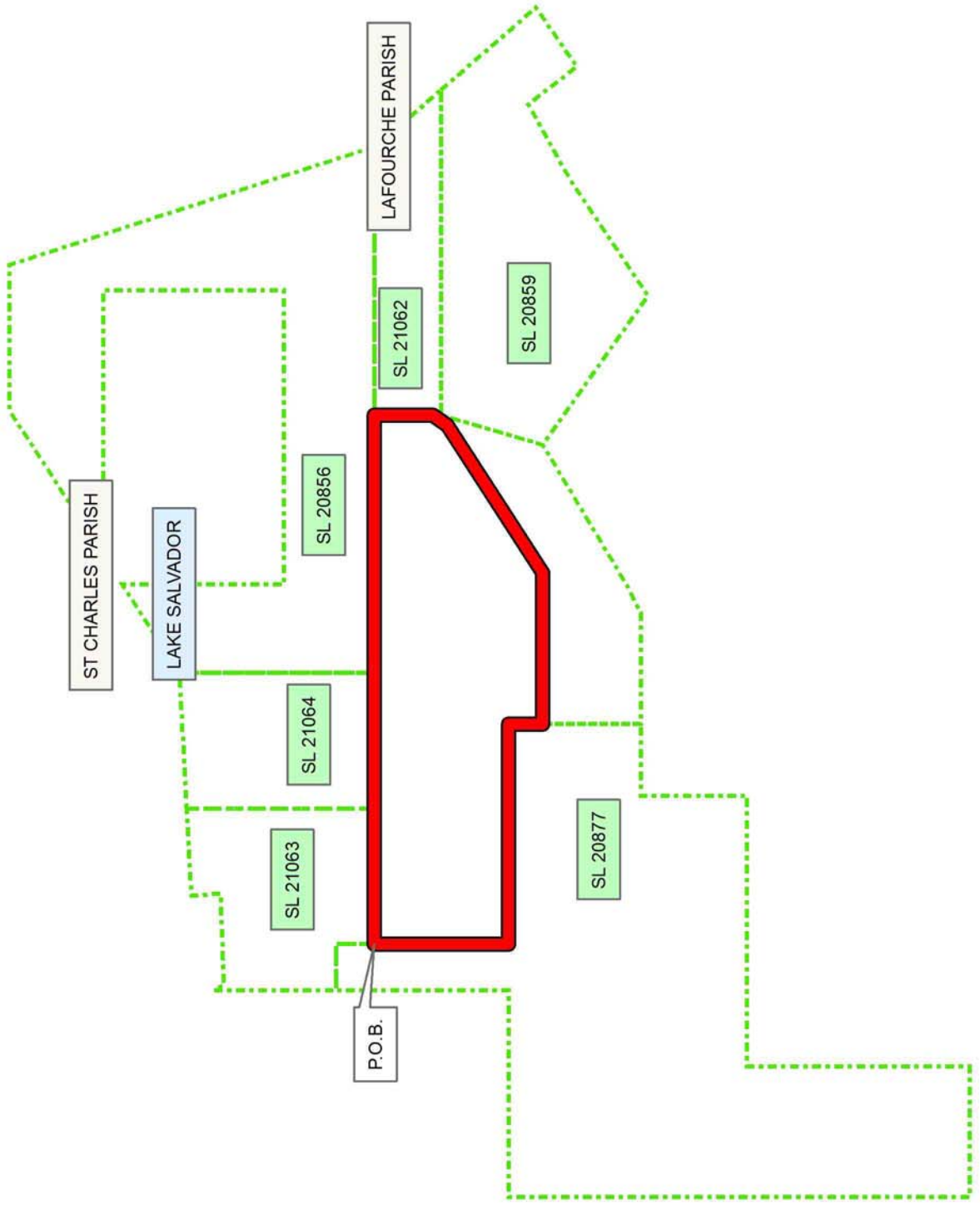
NOTE: The State of Louisiana does hereby reserve, and this lease shall be subject to, the imprescriptible right of surface use in the nature of a servitude in favor of the Department of Natural Resources, including its Offices and Commissions, for the sole purpose of implementing, constructing, servicing and maintaining approved coastal zone management and/or restoration projects. Utilization of any and all rights derived under this lease by the mineral lessee, its agents, successors or assigns, shall not interfere with nor hinder the reasonable surface use by the Department of Natural Resources, its Offices or Commissions, as herein above reserved.

Applicant: LARRY S. MINTER, INC.

Bidder	Cash Payment	Price/Acre	Rental	Oil	Gas	Other

Legend

- 13060023
- Active_Leases



TRACT 43271 - Lafourche Parish, Louisiana

All of the lands now or formerly constituting the beds and bottoms of all water bodies of every nature and description as to which title is vested in the State of Louisiana, together with all islands arising therein and other lands formed by accretion or by reliction, where allowed by law, excepting tax adjudicated lands, and not presently under mineral lease on June 12, 2013, situated in Lafourche Parish, Louisiana, and more particularly described as follows: Beginning at a point on the Southern boundary of State Lease No. 20628 having Coordinates of X = 2,318,613.00 and Y = 366,370.00; thence along the boundary of said State Lease No. 20628 the following courses and distances: East 2,637.00 feet and North 314.26 feet to the Southwest corner of State Lease No. 20877 having Coordinates of X = 2,321,250.00 and Y = 366,684.26; thence East 1,633.10 feet along the boundary of said State Lease No. 20877 to its Southernmost Southeast corner and the Southwest corner of State Lease No. 20629 having Coordinates of X = 2,322,883.10 and Y = 366,684.26; thence East 4,281.60 feet along the boundary of said State Lease No. 20629 to its Southeast corner and the Southwest corner of State Lease No. 21068 having Coordinates of X = 2,327,164.70 and Y = 366,684.26; thence along the boundary of said State Lease No. 21068 the following courses and distances: South 61 degrees 23 minutes 15 seconds East 2,305.90 feet, North 43 degrees 25 minutes 50 seconds East 1,520.58 feet, East 798.29 feet, North 843.26 feet, North 43 degrees 25 minutes 50 seconds East 4,650.86 feet, North 59 degrees 08 minutes 47 seconds East 189.12 feet and East 999.31 feet to its Northernmost Southeast corner having Coordinates of X = 2,335,391.67 and Y = 371,002.00; thence South 11,166.21 feet to the Southernmost Northeast corner of State Lease No. 21069 having Coordinates of X = 2,335,391.67 and Y = 359,835.79; thence along the boundary of said State Lease No. 21069 the following courses and distances: North 66 degrees 13 minutes 50 seconds West 1,771.98 feet, North 80 degrees 16 minutes 21 seconds West 1,065.32 feet, North 46 degrees 19 minutes 56 seconds West 1,824.83 feet, North 34 degrees 00 minutes 13 seconds East 1,519.90 feet, North 58 degrees 32 minutes 31 seconds West 4,771.27 feet, South 36 degrees 33 minutes 09 seconds West 1,444.02 feet, North 66 degrees 36 minutes 53 seconds West 1,209.34 feet, South 45 degrees 00 minutes 00 seconds West 1,071.73 feet, South 00 degrees 23 minutes 13 seconds East 522.41 feet, South 56 degrees 20 minutes 21 seconds East 10,445.68 feet and North 73 degrees 18 minutes 03 seconds East 1,296.34 feet to its Southeast corner having Coordinates of X = 2,335,391.67 and Y = 358,362.50; thence South 3,134.29 feet to a point having Coordinates of X = 2,335,391.67 and Y = 355,228.21; thence North 89 degrees 59 minutes 59 seconds West 16,317.94 feet to a point being the Southeast corner of State Lease No. 21070 having Coordinates of X = 2,319,073.73 and Y = 355,228.27; thence along the boundary of said State Lease No. 21070 the following: North 01 degrees 40 minutes 00 seconds West 2,505.77 feet and West 387.85 feet to a point having Coordinates of X = 2,318,613.00 and Y = 357,732.98; thence North 8,637.02 feet to the point of beginning, (This lease includes only waterbottoms claimed and owned by the state and specifically excludes any School Indemnity land located within the above described tract),

containing approximately **1,773 acres**, all as more particularly outlined on a plat on file in the Office of Mineral Resources, Department of Natural Resources. All bearings, distances and coordinates are based on Louisiana Coordinate System of 1927, (North or South Zone), where applicable.

NOTE: The above description of the Tract nominated for lease has been provided and corrected, where required, exclusively by the nomination party. Any mineral lease selected from this Tract and awarded by the Louisiana State Mineral and Energy Board shall be without warranty of any kind, either express, implied, or statutory, including, but not limited to, the implied warranties of merchantability and fitness for a particular purpose. Should the mineral lease awarded by the Louisiana State Mineral and Energy Board be subsequently modified, cancelled or abrogated due to the existence of conflicting leases, operating agreements, private claims or other future obligations or conditions which may affect all or any portion of the leased Tract, it shall not relieve the Lessee of the obligation to pay any bonus due thereon to the Louisiana State Mineral and Energy Board, nor shall the Louisiana State Mineral and Energy Board be obligated to refund any consideration paid by the Lessor prior to such modification, cancellation, or abrogation, including, but not limited to, bonuses, rentals and royalties.

NOTE: The State of Louisiana does hereby reserve, and this lease shall be subject to, the imprescriptible right of surface use in the nature of a servitude in favor of the Department of Natural Resources, including its Offices and Commissions, for the sole purpose of implementing, constructing, servicing and maintaining approved coastal zone management and/or restoration projects. Utilization of any and all rights derived under this lease by the mineral lessee, its agents, successors or assigns, shall not interfere with nor hinder the reasonable surface use by the Department of Natural Resources, its Offices or Commissions, as herein above reserved.

Applicant: LARRY S. MINTER, INC.

Bidder	Cash Payment	Price/Acre	Rental	Oil	Gas	Other

Legend



13060022

Active_Leases

IMAGERY.DOQQ_2004_1M



0 3,000 Feet

LAFOURCHE PARISH

LAKE SALVADOR

SL 21065

SL 21068

SL 21069

SL 20877

SL 20629

SL 20628

P.O.B.

T16S - R21E

SL 21070

T17S - R22E

TRACT 43272 - Lafourche Parish, Louisiana

All of the lands now or formerly constituting the beds and bottoms of all water bodies of every nature and description as to which title is vested in the State of Louisiana, together with all islands arising therein and other lands formed by accretion or by reliction, where allowed by law, excepting tax adjudicated lands, and not presently under mineral lease on June 12, 2013, situated in Lafourche Parish, Louisiana, and more particularly described as follows: Beginning at having Coordinates of X = 2,335,391.67 and Y = 366,000.00; thence East 13,597.98 feet to a point having Coordinates of X = 2,348,989.65 and Y = 366,000.00; thence South 10,771.79 feet to a point having Coordinates of X = 2,348,989.65 and Y = 355,228.21; thence West 13,597.98 feet to a point having Coordinates of X = 2,335,391.67 and Y = 355,228.21; thence North 3,134.29 feet to the Southeast corner of State Lease No. 21059 having Coordinates of X = 2,335,391.67 and Y = 358,362.50; thence North 1,473.29 feet along the boundary of said State Lease No. 21059 to its Southernmost Northeast corner having Coordinates of X = 2,335,391.67 and Y = 359,835.79; thence North 6,164.21 feet to the point of beginning, containing approximately **946 acres**, all as more particularly outlined on a plat on file in the Office of Mineral Resources, Department of Natural Resources. All bearings, distances and coordinates are based on Louisiana Coordinate System of 1927, (North or South Zone), where applicable.

NOTE: The above description of the Tract nominated for lease has been provided and corrected, where required, exclusively by the nomination party. Any mineral lease selected from this Tract and awarded by the Louisiana State Mineral and Energy Board shall be without warranty of any kind, either express, implied, or statutory, including, but not limited to, the implied warranties of merchantability and fitness for a particular purpose. Should the mineral lease awarded by the Louisiana State Mineral and Energy Board be subsequently modified, cancelled or abrogated due to the existence of conflicting leases, operating agreements, private claims or other future obligations or conditions which may affect all or any portion of the leased Tract, it shall not relieve the Lessee of the obligation to pay any bonus due thereon to the Louisiana State Mineral and Energy Board, nor shall the Louisiana State Mineral and Energy Board be obligated to refund any consideration paid by the Lessor prior to such modification, cancellation, or abrogation, including, but not limited to, bonuses, rentals and royalties.

NOTE: The State of Louisiana does hereby reserve, and this lease shall be subject to, the imprescriptible right of surface use in the nature of a servitude in favor of the Department of Natural Resources, including its Offices and Commissions, for the sole purpose of implementing, constructing, servicing and maintaining approved coastal zone management and/or restoration projects. Utilization of any and all rights derived under this lease by the mineral lessee, its agents, successors or assigns, shall not interfere with nor hinder the reasonable surface use by the

Department of Natural Resources, its Offices or Commissions, as herein above reserved.

Applicant: LARRY S. MINTER, INC.

Bidder	Cash Payment	Price/Acre	Rental	Oil	Gas	Other

Legend

13060021



Active_Leases



IMAGERY.DOQQ_2008_1M_CIR



LAFOURCHE PARISH

T16S - R22E

LAKE SALVADOR

P.O.B.

T16S - R21E



T17S - R22E

SL 21069

T17S - R21E

TRACT 43273 - Plaquemines Parish, Louisiana

All of the lands now or formerly constituting the beds and bottoms of all water bodies of every nature and description as to which title is vested in the State of Louisiana, together with all islands arising therein and other lands formed by accretion or by reliction, where allowed by law, excepting tax adjudicated lands, and not presently under mineral lease on June 12, 2013, situated in Plaquemines Parish, Louisiana, and more particularly described as follows: Beginning at a point having Coordinates of X = 2,552,715.00 and Y = 265,815.00, said point being the Southwest corner of State Lease No. 18165; thence North 29 degrees 44 minutes 10 seconds West 7,340.62 feet to a point having Coordinates of X = 2,549,074.00 and Y = 272,189.00; thence North 15 degrees 34 minutes 29 seconds West 2,972.13 feet to a point having Coordinates of X = 2,548,276.00 and Y = 275,052.00; thence North 01 degrees 13 minutes 12 seconds West 2,207.50 feet to a point having Coordinates of X = 2,548,229.00 and Y = 277,259.00; thence North 85 degrees 06 minutes 21 seconds East 3,387.35 feet to a point having Coordinates of X = 2,551,604.00 and Y = 277,548.00; thence South 10 degrees 22 minutes 35 seconds East 2,503.95 feet to a point having Coordinates of X = 2,552,055.00 and Y = 275,085.00; thence South 16 degrees 50 minutes 35 seconds East 2,595.33 feet to a point having Coordinates of X = 2,552,807.00 and Y = 272,601.00; thence South 39 degrees 01 minutes 10 seconds East 2,836.80 feet to a point having Coordinates of X = 2,554,593.00 and Y = 270,397.00; thence South 37 degrees 57 minutes 30 seconds East 1,926.55 feet to a point having Coordinates of X = 2,555,778.00 and Y = 268,878.00, said point being the Northwest corner of said State Lease No. 18165; thence South 45 degrees 00 minutes 00 seconds West 4,331.74 feet along the Western boundary of said State Lease No. 18165 to the point of beginning, (This lease includes only waterbottoms claimed and owned by the state and specifically excludes any land which the state may claim or own and to which the mineral rights are vested in the state), containing approximately **642 acres**, all as more particularly outlined on a plat on file in the Office of Mineral Resources, Department of Natural Resources. All bearings, distances and coordinates are based on Louisiana Coordinate System of 1927, (North or South Zone), where applicable.

NOTE: The above description of the Tract nominated for lease has been provided and corrected, where required, exclusively by the nomination party. Any mineral lease selected from this Tract and awarded by the Louisiana State Mineral and Energy Board shall be without warranty of any kind, either express, implied, or statutory, including, but not limited to, the implied warranties of merchantability and fitness for a particular purpose. Should the mineral lease awarded by the Louisiana State Mineral and Energy Board be subsequently modified, cancelled or abrogated due to the existence of conflicting leases, operating agreements, private claims or other future obligations or conditions which may affect all or any portion of the leased Tract, it shall not relieve the Lessee of the obligation to pay any bonus due thereon to the Louisiana State Mineral and

Energy Board, nor shall the Louisiana State Mineral and Energy Board be obligated to refund any consideration paid by the Lessor prior to such modification, cancellation, or abrogation, including, but not limited to, bonuses, rentals and royalties.

NOTE: The State of Louisiana does hereby reserve, and this lease shall be subject to, the imprescriptible right of surface use in the nature of a servitude in favor of the Department of Natural Resources, including its Offices and Commissions, for the sole purpose of implementing, constructing, servicing and maintaining approved coastal zone management and/or restoration projects. Utilization of any and all rights derived under this lease by the mineral lessee, its agents, successors or assigns, shall not interfere with nor hinder the reasonable surface use by the Department of Natural Resources, its Offices or Commissions, as herein above reserved.

Applicant: ROBERT A. SCHROEDER, INC.

Bidder	Cash Payment	Price/Acre	Rental	Oil	Gas	Other

Legend

13060091



Active_Leases



IMAGERY.DOQQ_2008_1M_CIR

PLAQUEMINES PARISH

T19S - R16E

MISSISSIPPI RIVER

SL 18165

P.O.B.

0 3,000 Feet

TRACT 43274 - Plaquemines Parish, Louisiana

All of the lands now or formerly constituting the beds and bottoms of all water bodies of every nature and description as to which title is vested in the State of Louisiana, together with all islands arising therein and other lands formed by accretion or by reliction, where allowed by law, excepting tax adjudicated lands, and not presently under mineral lease on June 12, 2013, situated in Plaquemines Parish, Louisiana, and more particularly described as follows: Beginning at the Northeast corner of State Lease No. 2376 having Coordinates of X = 2,504,105.46 and Y = 276,903.26; thence East 6,997.40 feet to a point having Coordinates of X = 2,511,102.87 and Y = 276,903.26; thence South 11,696.86 feet to a point having Coordinates of X = 2,511,102.87 and Y = 265,206.40; thence West 3,823.71 feet to a point having Coordinates of X = 2,507,279.16 and Y = 265,206.40; thence South 1,174.67 feet to a point having Coordinates of X = 2,507,279.16 and Y = 264,031.73; thence West 5,126.32 feet to the Northeast corner of State Lease No. 21018 having Coordinates of X = 2,502,152.84 and Y = 264,031.73; thence continue West 500.00 feet along the North boundary of said State Lease No. 21018 to the Southeast corner of Tract 2 of State Lease No. 1464, as amended having Coordinates of X = 2,501,652.84 and Y = 264,031.73; thence along the boundaries of said Tract 2 of State Lease No. 1464 the following courses: North 00 degrees 54 minutes 20 seconds West 4,517.12 feet to a point having Coordinates of X = 2,501,581.45 and Y = 268,548.29, North 86 degrees 00 minutes 08 seconds East 3,000.00 feet to a point having Coordinates of X = 2,504,574.15 and Y = 268,757.44, North 3,151.53 feet to a point having Coordinates of X = 2,504,574.15 and Y = 271,908.97 and South 89 degrees 15 minutes 00 seconds West 403.27 feet to the Southeast corner of said State Lease No. 2376 having Coordinates of X = 2,504,170.91 and Y = 271,903.69; thence North 00 degrees 45 minutes 00 seconds West 5,000.00 feet along the east boundary of said State Lease No. 2376 to the point of beginning, containing approximately **1582 acres**, all as more particularly outlined on a plat on file in the Office of Mineral Resources, Department of Natural Resources. All bearings, distances and coordinates are based on Louisiana Coordinate System of 1927, (North or South Zone), where applicable.

NOTE: The above description of the Tract nominated for lease has been provided and corrected, where required, exclusively by the nomination party. Any mineral lease selected from this Tract and awarded by the Louisiana State Mineral and Energy Board shall be without warranty of any kind, either express, implied, or statutory, including, but not limited to, the implied warranties of merchantability and fitness for a particular purpose. Should the mineral lease awarded by the Louisiana State Mineral and Energy Board be subsequently modified, cancelled or abrogated due to the existence of conflicting leases, operating agreements, private claims or other future obligations or conditions which may affect all or any portion of the leased Tract, it shall not relieve the Lessee of the obligation to pay any bonus due thereon to the Louisiana State Mineral and Energy Board, nor shall the Louisiana State Mineral and Energy Board be obligated to refund any consideration paid by the Lessor prior to such

modification, cancellation, or abrogation, including, but not limited to, bonuses, rentals and royalties.

NOTE: The State of Louisiana does hereby reserve, and this lease shall be subject to, the imprescriptible right of surface use in the nature of a servitude in favor of the Department of Natural Resources, including its Offices and Commissions, for the sole purpose of implementing, constructing, servicing and maintaining approved coastal zone management and/or restoration projects. Utilization of any and all rights derived under this lease by the mineral lessee, its agents, successors or assigns, shall not interfere with nor hinder the reasonable surface use by the Department of Natural Resources, its Offices or Commissions, as herein above reserved.

Applicant: MARK A. O'NEAL & ASSOCIATES, INC.

Bidder	Cash Payment	Price/Acre	Rental	Oil	Gas	Other

Legend

13060100



Active_Leases



IMAGERY.DOQQ_2008_1M_CIR

0 4,000 Feet



PLAQUEMINES PARISH

LAKE WASHINGTON

P.O.B.

SL 2376

SL 1464

SL 21018