

**TRACT 43275 - Plaquemines Parish, Louisiana**

All of the lands now or formerly constituting the beds and bottoms of all water bodies of every nature and description as to which title is vested in the State of Louisiana, together with all islands arising therein and other lands formed by accretion or by reliction, where allowed by law, excepting tax adjudicated lands, and not presently under mineral lease on June 12, 2013, situated in Plaquemines Parish, Louisiana, and more particularly described as follows: Beginning at the Northeast corner of State Lease No. 21018 having Coordinates of X = 2,502,152.84 and Y = 264,031.73; thence East 5,126.32 feet to a point having Coordinates of X = 2,507,279.16 and Y = 264,031.73; thence South 18,358.32 feet to a point having Coordinates of X = 2,507,279.16 and Y = 245,673.41; thence West 666.00 feet to a point being the Northeast corner of State Lease No. 1753, as amended having Coordinates of X = 2,506,613.16 and Y = 245,673.41; thence South 89 degrees 15 minutes 00 seconds West 3,002.00 feet to its Northwest corner also being the Northeast corner of Tract 1 of State Lease No. 1464, as amended having Coordinates of X = 2,503,611.42 and Y = 245,634.12; thence South 89 degrees 15 minutes 00 seconds West 872.69 feet along the North boundary of said Tract 1 of State Lease No. 1464 to a point having Coordinates of X = 2,502,738.81 and Y = 245,622.69; thence North 2,450.01 feet to the Southeast corner of State Lease No. 20806 having Coordinates of X = 2,502,738.81 and Y = 248,072.70; thence North 01 degrees 25 minutes 09 seconds West 6,910.73 feet along the east boundary of said State Lease No. 20806 to its Northeast corner and a point on the South boundary of Tract 3 of State Lease No. 1464, as amended having Coordinates of X = 2,502,567.67 and Y = 254,981.32; thence along the boundary of said Tract 3 of State Lease No. 1464 the following courses: South 88 degrees 12 minutes 11 seconds East 138.33 feet to a point having Coordinates of X = 2,502,705.93 and Y = 254,976.98, North 00 degrees 07 minutes 00 seconds East 3,135.30 feet to a point having Coordinates of X = 2,502,767.03 and Y = 258,111.68, North 964.70 feet to a point having Coordinates of X = 2,502,767.03 and Y = 259,076.38, and North 65 degrees 05 minutes 41 seconds West 677.16 feet to the Southeast corner of said State Lease No. 21018 having Coordinates of X = 2,502,152.84 and Y = 259,361.55; thence North 4,670.19 feet along the East boundary of said State Lease No. 21018 to the point of beginning, containing approximately **1,893 acres**, all as more particularly outlined on a plat on file in the Office of Mineral Resources, Department of Natural Resources. All bearings, distances and coordinates are based on Louisiana Coordinate System of 1927, (North or South Zone), where applicable.

NOTE: The above description of the Tract nominated for lease has been provided and corrected, where required, exclusively by the nomination party. Any mineral lease selected from this Tract and awarded by the Louisiana State Mineral and Energy Board shall be without warranty of any kind, either express, implied, or statutory, including, but not limited to, the implied warranties of merchantability and fitness for a particular purpose. Should the mineral lease awarded by the Louisiana State Mineral and Energy Board be subsequently modified, cancelled or abrogated due to the existence of conflicting leases, operating agreements, private claims

or other future obligations or conditions which may affect all or any portion of the leased Tract, it shall not relieve the Lessee of the obligation to pay any bonus due thereon to the Louisiana State Mineral and Energy Board, nor shall the Louisiana State Mineral and Energy Board be obligated to refund any consideration paid by the Lessor prior to such modification, cancellation, or abrogation, including, but not limited to, bonuses, rentals and royalties.

NOTE: The State of Louisiana does hereby reserve, and this lease shall be subject to, the imprescriptible right of surface use in the nature of a servitude in favor of the Department of Natural Resources, including its Offices and Commissions, for the sole purpose of implementing, constructing, servicing and maintaining approved coastal zone management and/or restoration projects. Utilization of any and all rights derived under this lease by the mineral lessee, its agents, successors or assigns, shall not interfere with nor hinder the reasonable surface use by the Department of Natural Resources, its Offices or Commissions, as herein above reserved.

Applicant: MARK A. O'NEAL & ASSOCIATES, INC.

Bidder	Cash Payment	Price/Acre	Rental	Oil	Gas	Other

**Legend**



13060099

Active\_Leases

IMAGERY.DOQQ\_2008\_1M\_CIR

PLAQUEMINES PARISH

LAKE WASHINGTON

4,000 Feet



P.O.B.

SL 21018

SL 1464

SL 20806

SL 1753

SL 1464



**TRACT 43276 - Plaquemines Parish, Louisiana**

All of the lands now or formerly constituting the beds and bottoms of all water bodies of every nature and description as to which title is vested in the State of Louisiana, together with all islands arising therein and other lands formed by accretion or by reliction, where allowed by law, excepting tax adjudicated lands, and not presently under mineral lease on June 12, 2013, situated in Plaquemines Parish, Louisiana, and more particularly described as follows: Beginning at a point being the Southwest corner of State Lease No. 18165 having Coordinates of X = 2,558,774.00 and Y = 261,608.00; thence North 76 degrees 00 minutes 00 seconds East 5,749.79 feet along the Southern boundary of said State Lease No. 18165 to a point being its Southeast corner having Coordinates of X = 2,564,353.00 and Y = 262,999.00; thence South 69 degrees 21 minutes 34 seconds East 6,507.73 feet to a point having Coordinates of X = 2,570,443.00 and Y = 260,705.00; thence South 71 degrees 38 minutes 00 seconds East 3,986.05 feet to a point having Coordinates of X = 2,574,226.00 and Y = 259,449.00; thence South 19 degrees 19 minutes 04 seconds West 3,509.60 feet to a point having Coordinates of X = 2,573,065.00 and Y = 256,137.00; thence North 75 degrees 31 minutes 56 seconds West 4,538.94 feet to a point having Coordinates of X = 2,568,670.00 and Y = 257,271.00; Thence North 71 degrees 46 minutes 55 seconds West 4,593.24 feet to a point having Coordinates of X = 2,564,307.00 and Y = 258,707.00; Thence North 70 degrees 34 minutes 57 seconds West 3,534.86 feet to a point having Coordinates of X = 2,560,973.20 and Y = 259,882.16, Thence North 51 degrees 52 minutes 36 seconds West 2,795.53 feet to the point of beginning, **LESS AND EXCEPT** all that portion thereof situated within the boundaries of State of Louisiana State Lease No. 16710, as amended, which lease is more particularly described as follows, to wit: Beginning at a point on the northern boundary of the production unit identified as the O6 RB SUA, as created by Louisiana Office of Conservation Order No. 485 H 1 for the Empire Field, Plaquemines Parish, Louisiana, having Coordinates of X = 2,561,932.36 and Y = 262,152.04; Thence along the boundary of said O6 RB SUA the following courses: South 33 degrees 07 minutes 59 seconds East 1,359.44 feet to a point having Coordinates of X = 2,562,675.41 and Y = 261,013.64; and South 56 degrees 23 minutes 15 seconds West approximately 961.00 feet to a point on the southern boundary of said State of Louisiana State Lease No. 16710; Thence northwesterly approximately 2,414 feet to a point on the northwestern boundary of said O6 RB SUA; Thence along the boundary of said O6 RB SUA the following courses: northeasterly approximately 378 feet to a point having Coordinates of X = 2,560,013.23 and Y = 261,728.09; and North 77 degrees 32 minutes 34 seconds East 1,965.40 feet to the point of beginning, containing approximately 59.5631 acres. The above described tract contains approximately **790 acres**, all as more particularly outlined on a plat on file in the Office of Mineral Resources, Department of Natural Resources. All bearings, distances and coordinates are based on Louisiana Coordinate System of 1927, (North or South Zone), where applicable.

NOTE: The above description of the Tract nominated for lease has been provided and corrected, where required, exclusively by the nomination party. Any mineral lease selected from this Tract and awarded by the Louisiana State Mineral and Energy Board shall be without warranty of any kind, either express, implied, or statutory, including, but not limited to, the implied warranties of merchantability and fitness for a particular purpose. Should the mineral lease awarded by the Louisiana State Mineral and Energy Board be subsequently modified, cancelled or abrogated due to the existence of conflicting leases, operating agreements, private claims or other future obligations or conditions which may affect all or any portion of the leased Tract, it shall not relieve the Lessee of the obligation to pay any bonus due thereon to the Louisiana State Mineral and Energy Board, nor shall the Louisiana State Mineral and Energy Board be obligated to refund any consideration paid by the Lessor prior to such modification, cancellation, or abrogation, including, but not limited to, bonuses, rentals and royalties.

NOTE: The State of Louisiana does hereby reserve, and this lease shall be subject to, the imprescriptible right of surface use in the nature of a servitude in favor of the Department of Natural Resources, including its Offices and Commissions, for the sole purpose of implementing, constructing, servicing and maintaining approved coastal zone management and/or restoration projects. Utilization of any and all rights derived under this lease by the mineral lessee, its agents, successors or assigns, shall not interfere with nor hinder the reasonable surface use by the Department of Natural Resources, its Offices or Commissions, as herein above reserved.

Applicant: ROBERT A. SCHROEDER, INC.

Bidder	Cash Payment	Price/Acre	Rental	Oil	Gas	Other

Legend



Active\_Leases



IMAGERY.DOQQ\_2008\_1M\_CIR



**TRACT 43277 - Plaquemines Parish, Louisiana**

All of the lands now or formerly constituting the beds and bottoms of all water bodies of every nature and description as to which title is vested in the State of Louisiana, together with all islands arising therein and other lands formed by accretion or by reliction, where allowed by law, excepting tax adjudicated lands, and not presently under mineral lease on June 12, 2013, situated in Plaquemines Parish, Louisiana, and more particularly described as follows: Beginning at a point having Coordinates of X = 2,586,200.00 and Y = 251,700.00, said point being on the Western boundary of State Lease No. 14645, as amended; thence South 27 degrees 12 minutes 00 seconds West approximately 1,423 feet along the Western boundary of said State Lease No. 14645, as amended, to its Northwest corner; thence South 27 degrees 12 minutes 00 seconds West approximately 310 feet to a point having Coordinates of X = 2,585,407.85 and Y = 250,158.64; thence North 63 degrees 24 minutes 30 seconds West 4,705.61 feet to a point having Coordinates of X = 2,581,200.00 and Y = 252,265.00; thence North 59 degrees 43 minutes 02 seconds West 6,103.89 feet to a point having Coordinates of X = 2,575,929.00 and Y = 255,343.00; thence North 74 degrees 30 minutes 17 seconds West 2,972.02 feet to a point having Coordinates of X = 2,573,065.00 and Y = 256,137.00; thence North 19 degrees 19 minutes 04 seconds East 3,509.60 feet to a point having Coordinates of X = 2,574,226.00 and Y = 259,449.00; thence South 75 degrees 47 minutes 53 seconds East 3,354.52 feet to a point having Coordinates of X = 2,577,478.00 and Y = 258,626.00; thence South 63 degrees 39 minutes 00 seconds East 4,765.09 feet to a point having Coordinates of X = 2,581,748.00 and Y = 256,511.00; thence South 61 degrees 42 minutes 09 seconds East 6,159.91 feet to a point having Coordinates of X = 2,587,171.79 and Y = 253,590.90; thence South 27 degrees 12 minutes 00 seconds West approximately 342 feet to a point being the Northeast corner of said State Lease No. 14645, as amended; thence South 27 degrees 12 minutes 00 seconds West approximately 1,784 feet along the Western boundary of said State Lease No. 14645, as amended, to the point of beginning, (This lease includes only waterbottoms claimed and owned by the state and specifically excludes any land which the state may claim or own and to which the mineral rights are vested in the state), containing approximately **1,010 acres**, all as more particularly outlined on a plat on file in the Office of Mineral Resources, Department of Natural Resources. All bearings, distances and coordinates are based on Louisiana Coordinate System of 1927, (North or South Zone), where applicable.

NOTE: The above description of the Tract nominated for lease has been provided and corrected, where required, exclusively by the nomination party. Any mineral lease selected from this Tract and awarded by the Louisiana State Mineral and Energy Board shall be without warranty of any kind, either express, implied, or statutory, including, but not limited to, the implied warranties of merchantability and fitness for a particular purpose. Should the mineral lease awarded by the Louisiana State Mineral and Energy Board be subsequently modified, cancelled or abrogated due to the existence of conflicting leases, operating agreements, private claims

or other future obligations or conditions which may affect all or any portion of the leased Tract, it shall not relieve the Lessee of the obligation to pay any bonus due thereon to the Louisiana State Mineral and Energy Board, nor shall the Louisiana State Mineral and Energy Board be obligated to refund any consideration paid by the Lessor prior to such modification, cancellation, or abrogation, including, but not limited to, bonuses, rentals and royalties.

NOTE: The State of Louisiana does hereby reserve, and this lease shall be subject to, the imprescriptible right of surface use in the nature of a servitude in favor of the Department of Natural Resources, including its Offices and Commissions, for the sole purpose of implementing, constructing, servicing and maintaining approved coastal zone management and/or restoration projects. Utilization of any and all rights derived under this lease by the mineral lessee, its agents, successors or assigns, shall not interfere with nor hinder the reasonable surface use by the Department of Natural Resources, its Offices or Commissions, as herein above reserved.

Applicant: ROBERT A. SCHROEDER, INC.

Bidder	Cash Payment	Price/Acre	Rental	Oil	Gas	Other



Legend

- 13060090
- Blocks
- Active\_Leases

IMAGERY.DOQQ\_2008\_1M\_CIR



PLAQUEMINES PARISH

T19S - R17E

SL 14645

MISSISSIPPI RIVER

P.O.B.

**TRACT 43278 - Plaquemines Parish, Louisiana**

All of the lands now or formerly constituting the beds and bottoms of all water bodies of every nature and description as to which title is vested in the State of Louisiana, together with all islands arising therein and other lands formed by accretion or by reliction, where allowed by law, excepting tax adjudicated lands, and not presently under mineral lease on June 12, 2013, situated in Plaquemines Parish, Louisiana, and more particularly described as follows: Beginning at a point on the South boundary of State Lease No. 20379 having Coordinates of X = 2,478,917.17 and Y = 250,260.17; thence East 1,950.54 feet along the South boundary of said State Lease No. 20379 to the Northwest corner of State Lease No. 20807 having Coordinates of X = 2,480,867.71 and Y = 250,260.17; thence along the boundaries of said State Lease No. 20807 the following courses: South 00 degrees 54 minutes 22 seconds East 2,960.77 feet to a point having Coordinates of X = 2,480,914.53 and Y = 247,299.77, North 87 degrees 47 minutes 53 seconds East 8,186.58 feet to a point having Coordinates of X = 2,489,095.07 and Y = 247,614.31 and North approximately 3,593 feet to its Northeast corner and a point on the South boundary of that certain Agreement between Cockrell et al and the State of Louisiana, dated May 16, 1938, recorded in Book 88, Page 189, in Plaquemines Parish; thence Easterly approximately 2,555 feet along the Southern boundary of said Agreement to a point of intersection with a Coordinate of X = 2,491,649.65; thence South approximately 573 feet to the Northwest corner of Tract 1 of State Lease No. 17267, as amended having Coordinates of X = 2,491,649.65 and Y = 250,668.30; thence along the boundaries of said Tract 1 of State Lease No. 17267 the following courses: South 07 degrees 08 minutes 05 seconds West 2,302.68 feet, South 63 degrees 25 minutes 01 seconds East 142.80 feet, South 65 degrees 32 minutes 43 seconds East 133.58 feet, South 68 degrees 01 minutes 59 seconds East 125.24 feet, South 70 degrees 49 minutes 37 second East 117.84 feet, South 73 degrees 21 minutes 58 second East 113.19 feet, South 75 degrees 24 minutes 23 seconds East 110.93 feet, and South 77 degrees 34 minutes 55 seconds East 109.51 feet; thence South 1,319.24 feet to a point having Coordinates of X = 2,492,163.15 and Y = 246,775.56; thence South 87 degrees 56 minutes 41 seconds West 13,156.21 feet to a point having Coordinates of X = 2,479,015.41 and Y = 246,303.72; thence North 01 degrees 25 minutes 20 seconds West 3,957.67 feet to the point of beginning, containing approximately **215 acres**, all as more particularly outlined on a plat on file in the Office of Mineral Resources, Department of Natural Resources. All bearings, distances and coordinates are based on Louisiana Coordinate System of 1927, (North or South Zone), where applicable.

NOTE: The above description of the Tract nominated for lease has been provided and corrected, where required, exclusively by the nomination party. Any mineral lease selected from this Tract and awarded by the Louisiana State Mineral and Energy Board shall be without warranty of any kind, either express, implied, or statutory, including, but not limited to, the implied warranties of merchantability and fitness for a particular purpose. Should the mineral lease awarded by the Louisiana State Mineral

and Energy Board be subsequently modified, cancelled or abrogated due to the existence of conflicting leases, operating agreements, private claims or other future obligations or conditions which may affect all or any portion of the leased Tract, it shall not relieve the Lessee of the obligation to pay any bonus due thereon to the Louisiana State Mineral and Energy Board, nor shall the Louisiana State Mineral and Energy Board be obligated to refund any consideration paid by the Lessor prior to such modification, cancellation, or abrogation, including, but not limited to, bonuses, rentals and royalties.

NOTE: The State of Louisiana does hereby reserve, and this lease shall be subject to, the imprescriptible right of surface use in the nature of a servitude in favor of the Department of Natural Resources, including its Offices and Commissions, for the sole purpose of implementing, constructing, servicing and maintaining approved coastal zone management and/or restoration projects. Utilization of any and all rights derived under this lease by the mineral lessee, its agents, successors or assigns, shall not interfere with nor hinder the reasonable surface use by the Department of Natural Resources, its Offices or Commissions, as herein above reserved.

Applicant: MARK A. O'NEAL & ASSOCIATES, INC.

Bidder	Cash Payment	Price/Acre	Rental	Oil	Gas	Other

**Legend**

- 13060101
- Claimable State Waterbottoms
- Freeze Statute
- Active\_Leases

IMAGERY.DOQQ\_2008\_1M\_CIR

PLAQUEMINES PARISH

BARATARIA BAY

SL 17267

SL 20807

SL 20379

P.O.B.

0 2,000 Feet



**TRACT 43279 - Plaquemines Parish, Louisiana**

All of the lands now or formerly constituting the beds and bottoms of all water bodies of every nature and description as to which title is vested in the State of Louisiana, together with all islands arising therein and other lands formed by accretion or by reliction, where allowed by law, excepting tax adjudicated lands, and not presently under mineral lease on June 12, 2013, situated in Plaquemines Parish, Louisiana, and more particularly described as follows: Beginning at the Southwest corner of State Lease No. 20806 having Coordinates of X = 2,496,790.00 and Y = 247,880.00; thence North 88 degrees 08 minutes 41 seconds East 5,951.93 feet along the South boundary of said State Lease No. 20806 to its Southeast corner having Coordinates of X = 2,502,738.81 and Y = 248,072.70; thence South 917.61 feet to a point having Coordinates of X = 2,502,738.81 and Y = 247,155.09; thence South 87 degrees 56 minutes 41 seconds West 10,582.46 feet to a point having Coordinates of X = 2,492,163.15 and Y = 246,775.56; thence North 1,319.23 feet to a point on the South boundary of Tract 1 of State Lease No. 17267, as amended having Coordinates of X = 2,492,163.15 and Y = 248,094.79; thence along the boundaries of said Tract 1 of State Lease No. 17267 the following courses: South 79 degrees 44 minutes 15 seconds East 108.89 feet, South 82 degrees 05 minutes 45 seconds East 107.62 feet, South 84 degrees 42 minutes 36 seconds East 105.75 feet, South 87 degrees 27 minutes 17 seconds East 104.70 feet, North 89 degrees 50 minutes 08 seconds East 104.50 feet, North 87 degrees 40 minutes 25 seconds East 54.19 feet, North 86 degrees 14 minutes 19 second East 57.92 feet, North 84 degrees 59 minutes 10 seconds East 61.79 feet, North 83 degrees 50 minutes 51 seconds East 65.78 feet, North 82 degrees 53 minutes 43 seconds East 69.94 feet, North 81 degrees 58 minutes 25 seconds East 74.13 feet, North 81 degrees 12 minutes 14 seconds East 78.47 feet, North 80 degrees 29 minutes 53 seconds East 82.99 feet, North 06 degrees 04 minutes 21 seconds East 1,848.07 feet, South 68 degrees 43 minutes 13 seconds West 81.56 feet, South 70 degrees 24 minutes 55 seconds West 78.01 feet, South 72 degrees 16 minutes 07 seconds West 74.70 feet, South 72 degrees 53 minutes 36 seconds West 65.61 feet, South 77 degrees 39 minutes 54 seconds West 74.66 feet, South 79 degrees 00 minutes 51 seconds West 65.86 feet, South 81 degrees 41 minutes 50 seconds West 63.36 feet, South 84 degrees 27 minutes 27 seconds West 61.09 feet, South 87 degrees 45 minutes 55 seconds West 116.69 feet, North 88 degrees 25 minutes 13 seconds West 110.64 feet, North 84 degrees 08 minutes 48 seconds West 105.90 feet, North 79 degrees 35 minutes 06 seconds West 102.34 feet, North 75 degrees 14 minutes 31 seconds West 100.10 feet, North 71 degrees 14 minutes 08 seconds West 99.01 feet, North 67 degrees 06 minutes 47 seconds West 98.99 feet, North 63 degrees 08 minutes 25 seconds West 100.04 feet, North 60 degrees 20 minutes 32 seconds West 48.91 feet, North 57 degrees 33 minutes 48 seconds West 88.75 feet, North 52 degrees 50 minutes 56 seconds West 77.41 feet, North 46 degrees 37 minutes 35 seconds West 67.27 feet, North 40 degrees 51 minutes 37 second West 58.77 feet, North 24 degrees 06 minutes 44 seconds West 48.59 feet, North 23 degrees 40 minutes 24 seconds West 52.30 feet, North 20 degrees 54 minutes 06 seconds West 62.09 feet, North 18 degrees 51

minutes 01 seconds West 71.96 feet, North 17 degrees 19 minutes 52 seconds West 82.08 feet, North 16 degrees 08 minutes 45 seconds West 92.24 feet, and North 15 degrees 09 minutes 17 seconds West 102.52 feet to its Northwest corner having Coordinates of X = 2,491,649.65 and Y = 2,500,668.30; thence North approximately 573 feet to a point on the South boundary of that certain Agreement between Cockrell et al and the State of Louisiana, dated May 16, 1938, recorded in Book 88, Page 189, in Plaquemines Parish; thence Easterly approximately 2,330 feet along the Southern boundary of said Agreement to a point on the West boundary of Tract 2 of State Lease No. 17267, as amended; thence along the boundaries of said Tract 2 of State Lease No. 17267 the following courses: South 13 degrees 00 minutes 20 seconds East approximately 222 feet to a point having Coordinates of X = 2,494,029.14 and Y = 251,055.86, North 76 degrees 59 minutes 40 seconds East 700.00 feet to a point having Coordinates of X = 2,494,711.19 and Y = 251,213.39 and North 13 degrees 00 minutes 20 seconds West approximately 70 feet to a point on the South boundary of said certain Agreement between Cockrell et al and the State of Louisiana, dated May 16, 1938, recorded in Book 88, Page 189, in Plaquemines Parish; thence Easterly approximately 1,991 feet along the southern boundary of said Agreement to the Northwest corner of said State Lease No. 20806; thence South 01 degrees 43 minutes 57 seconds East approximately 3,430 feet along the West boundary of said State Lease No. 20806 to the point of beginning, containing approximately **171 acres**, all as more particularly outlined on a plat on file in the Office of Mineral Resources, Department of Natural Resources. All bearings, distances and coordinates are based on Louisiana Coordinate System of 1927, (North or South Zone), where applicable.

NOTE: The above description of the Tract nominated for lease has been provided and corrected, where required, exclusively by the nomination party. Any mineral lease selected from this Tract and awarded by the Louisiana State Mineral and Energy Board shall be without warranty of any kind, either express, implied, or statutory, including, but not limited to, the implied warranties of merchantability and fitness for a particular purpose. Should the mineral lease awarded by the Louisiana State Mineral and Energy Board be subsequently modified, cancelled or abrogated due to the existence of conflicting leases, operating agreements, private claims or other future obligations or conditions which may affect all or any portion of the leased Tract, it shall not relieve the Lessee of the obligation to pay any bonus due thereon to the Louisiana State Mineral and Energy Board, nor shall the Louisiana State Mineral and Energy Board be obligated to refund any consideration paid by the Lessor prior to such modification, cancellation, or abrogation, including, but not limited to, bonuses, rentals and royalties.

NOTE: The State of Louisiana does hereby reserve, and this lease shall be subject to, the imprescriptible right of surface use in the nature of a servitude in favor of the Department of Natural Resources, including its Offices and Commissions, for the sole purpose of implementing,

constructing, servicing and maintaining approved coastal zone management and/or restoration projects. Utilization of any and all rights derived under this lease by the mineral lessee, its agents, successors or assigns, shall not interfere with nor hinder the reasonable surface use by the Department of Natural Resources, its Offices or Commissions, as herein above reserved.

Applicant: MARK A. O'NEAL & ASSOCIATES, INC.

Bidder	Cash Payment	Price/Acre	Rental	Oil	Gas	Other

**Legend**



13060102

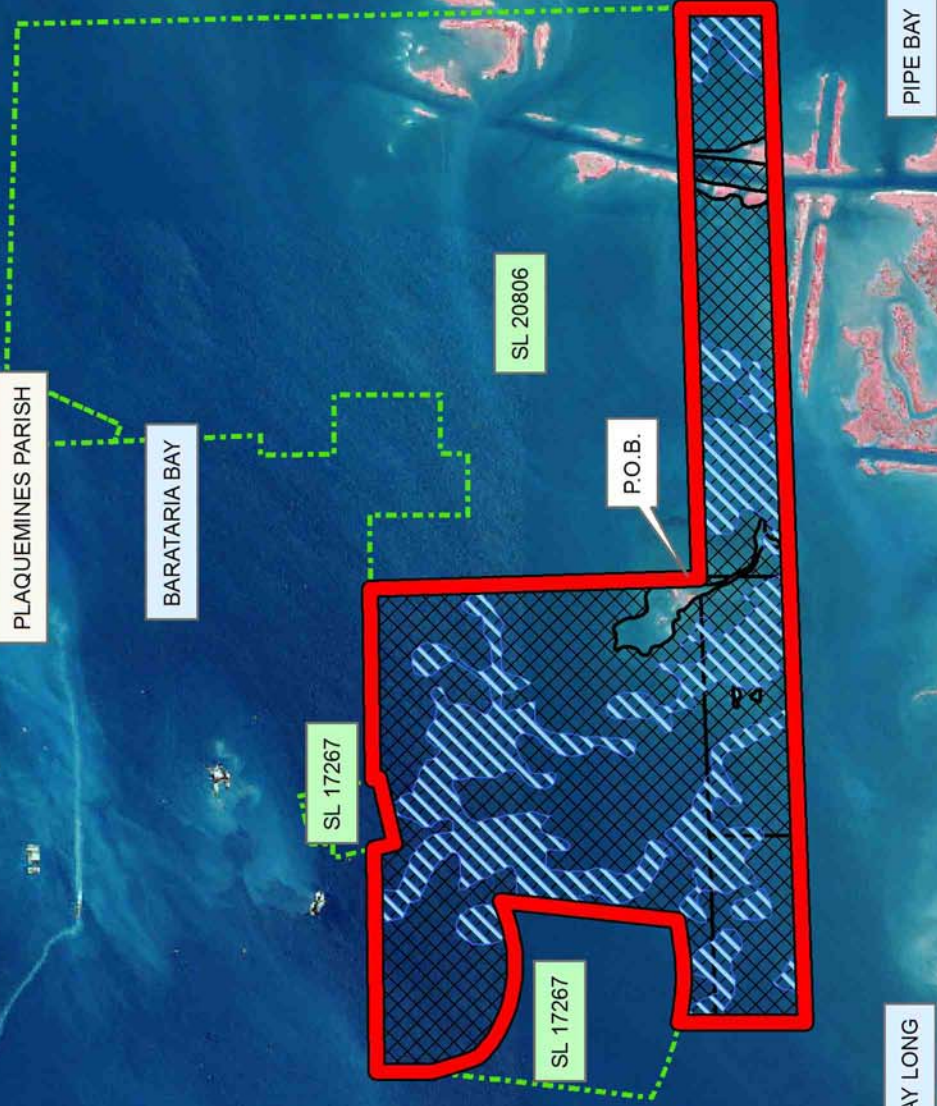
Claimable State Waterbottoms

Freeze Statute

Active\_Leases

IMAGERY.DOQQ\_2008\_1M\_CIR

0 2,000 Feet





**TRACT 43280 - Portion of Blocks 115, and 116, South Timbalier Area, Revised, Terrebonne Parish, Louisiana**

All of the lands now or formerly constituting the beds and bottoms of all water bodies of every nature and description as to which title is vested in the State of Louisiana, together with all islands arising therein and other lands formed by accretion or by reliction, where allowed by law, excepting tax adjudicated lands, and not presently under mineral lease on June 12, 2013, situated in Terrebonne Parish, Louisiana, and more particularly described as follows: Beginning at a point within Block 115, South Timbalier Area, Revised, having Coordinates of X = 2,252,550.00 and Y = 190,779.33; thence East 7,249.00 feet to a point having Coordinates of X = 2,259,799.00 and Y = 190,779.33; thence South 8,083.85 feet to a point within Block 116, South Timbalier Area, Revised, having Coordinates of X = 2,259,799.00 and Y = 182,695.48; thence West 7,249.00 feet to a point within said Block 115, South Timbalier Area, Revised, having Coordinates of X = 2,252,550.00 and Y = 182,695.48; thence North 8,083.85 feet to the point of beginning, **LESS AND EXCEPT** any right, title, and interest in lands owned by and not under lease from the State of Louisiana, on behalf of the Terrebonne Parish School Board, situated in Section 16, Township 22 South, Range 19 East, Terrebonne Parish, Louisiana, contained within the above described tract, containing approximately **1,345.27 acres**, all as more particularly outlined on a plat on file in the Office of Mineral Resources, Department of Natural Resources. All bearings, distances and coordinates are based on Louisiana Coordinate System of 1927, (North or South Zone), where applicable.

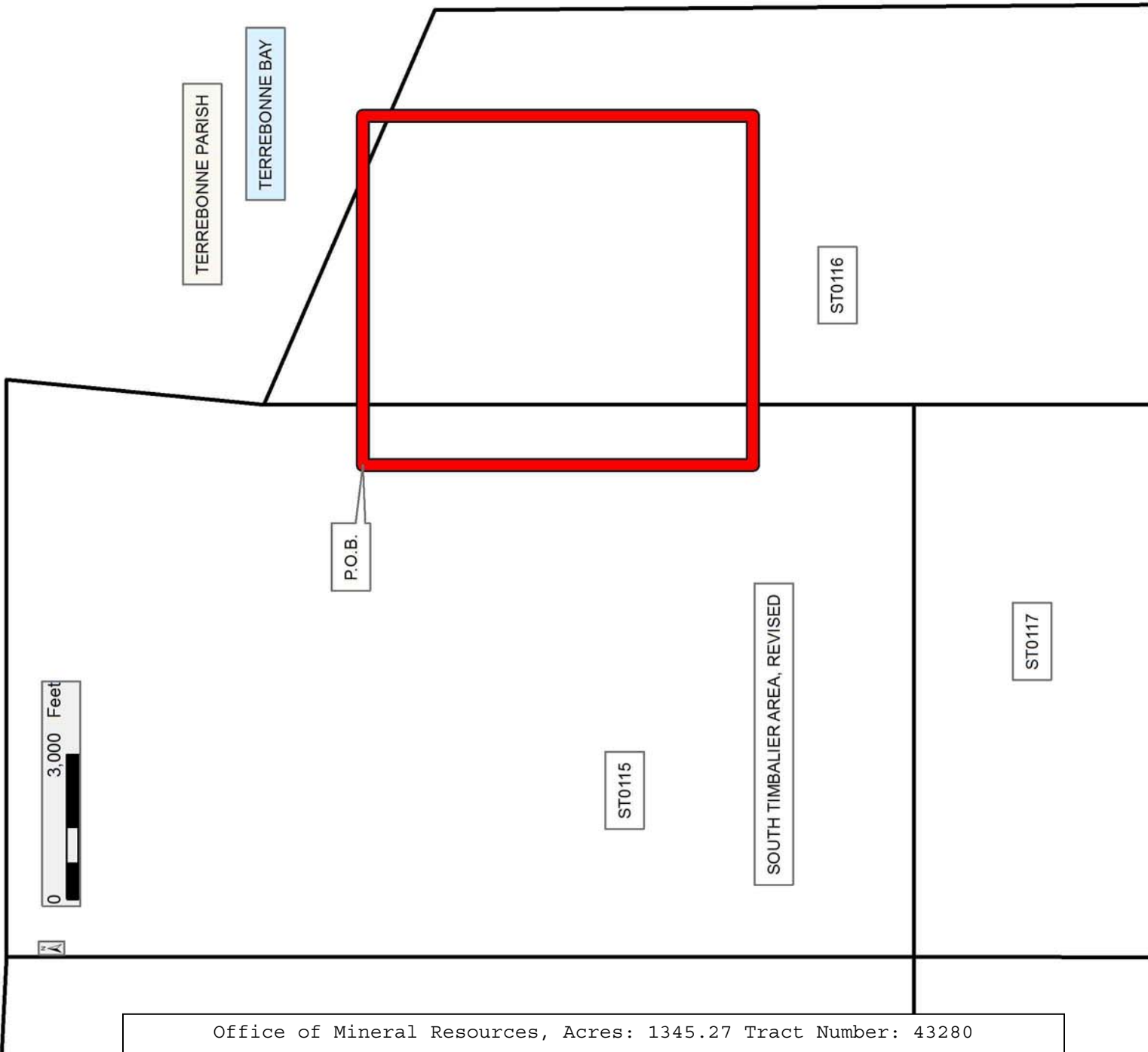
NOTE: The above description of the Tract nominated for lease has been provided and corrected, where required, exclusively by the nomination party. Any mineral lease selected from this Tract and awarded by the Louisiana State Mineral and Energy Board shall be without warranty of any kind, either express, implied, or statutory, including, but not limited to, the implied warranties of merchantability and fitness for a particular purpose. Should the mineral lease awarded by the Louisiana State Mineral and Energy Board be subsequently modified, cancelled or abrogated due to the existence of conflicting leases, operating agreements, private claims or other future obligations or conditions which may affect all or any portion of the leased Tract, it shall not relieve the Lessee of the obligation to pay any bonus due thereon to the Louisiana State Mineral and Energy Board, nor shall the Louisiana State Mineral and Energy Board be obligated to refund any consideration paid by the Lessor prior to such modification, cancellation, or abrogation, including, but not limited to, bonuses, rentals and royalties.

NOTE: The State of Louisiana does hereby reserve, and this lease shall be subject to, the imprescriptible right of surface use in the nature of a servitude in favor of the Department of Natural Resources, including its Offices and Commissions, for the sole purpose of implementing, constructing, servicing and maintaining approved coastal zone management and/or restoration projects. Utilization of any and all rights derived

under this lease by the mineral lessee, its agents, successors or assigns, shall not interfere with nor hinder the reasonable surface use by the Department of Natural Resources, its Offices or Commissions, as herein above reserved.

Applicant: THEOPHILUS OIL, GAS & LAND SERVICES, LLC

Bidder	Cash Payment	Price/Acre	Rental	Oil	Gas	Other



**TRACT 43281 - Portion of Block 116, South Timbalier Area, Revised, Terrebonne Parish, Louisiana**

All of the lands now or formerly constituting the beds and bottoms of all water bodies of every nature and description as to which title is vested in the State of Louisiana, together with all islands arising therein and other lands formed by accretion or by reliction, where allowed by law, excepting tax adjudicated lands, and not presently under mineral lease on June 12, 2013, situated in Terrebonne Parish, Louisiana, and more particularly described as follows: Beginning at a point having Coordinates of X = 2,259,799.00 and Y = 190,779.33; thence East 774.01 feet to a point on the boundary of State Lease No. 199, as amended, having Coordinates of X = 2,260,573.01 and Y = 190,779.33; thence along the boundary of said State Lease No. 199, the following courses and distances: South 68 degrees 25 minutes 17 seconds East 800.89 feet to a point having Coordinates of X = 2,261,317.77 and Y = 190,484.78, South 71 degrees 40 minutes 04 seconds East 933.24 feet to a point having Coordinates of X = 2,262,203.65 and Y = 190,191.25, South 73 degrees 32 minutes 14 seconds East 516.49 feet to a point having Coordinates of X = 2,262,698.97 and Y = 190,044.88, South 75 degrees 55 minutes 09 seconds East 243.74 feet to a point having Coordinates of X = 2,262,935.39 and Y = 189,985.58, South 20 degrees 46 minutes 09 seconds West 938.43 feet to a point having Coordinates of X = 2,262,602.62 and Y = 189,108.13, South 73 degrees 25 minutes 10 seconds East 7,470.05 feet to a point having Coordinates of X = 2,269,762.06 and Y = 186,976.45, North 89 degrees 34 minutes 49 seconds East 485.99 feet to a point having Coordinates of X = 2,270,248.04 and Y = 186,980.01, North 89 degrees 34 minutes 50 seconds East 3,328.43 feet to a point having Coordinates of X = 2,273,576.38 and Y = 187,004.38, North 06 degrees 12 minutes 15 seconds West 1,392.69 feet to a point having Coordinates of X = 2,273,425.87 and Y = 188,388.91, North 11 degrees 26 minutes 05 seconds West 488.47 feet to a point having Coordinates of X = 2,273,329.03 and Y = 188,867.68, North 89 degrees 34 minutes 50 seconds East 1,285.27 feet to a point having Coordinates of X = 2,274,614.27 and Y = 188,877.09, South 00 degrees 25 minutes 11 seconds East 1,865.06 feet to a point having Coordinates of X = 2,274,627.93 and Y = 187,012.08, and North 89 degrees 34 minutes 49 seconds East 565.01 feet to a point having Coordinates of X = 2,275,192.92 and Y = 187,016.22; thence South 4,320.74 feet to a point having Coordinates of X = 2,275,192.92 and Y = 182,695.48; thence West 15,393.92 feet to a point within Block 116, South Timbalier Area, Revised, having Coordinates of X = 2,259,799.00 and Y = 182,695.48; thence North 8,083.85 feet to the point of beginning, containing approximately **1,970.87 acres**, all as more particularly outlined on a plat on file in the Office of Mineral Resources, Department of Natural Resources. All bearings, distances and coordinates are based on Louisiana Coordinate System of 1927, (North or South Zone), where applicable.

NOTE: The above description of the Tract nominated for lease has been provided and corrected, where required, exclusively by the nomination party. Any mineral lease selected from this Tract and awarded by the Louisiana State Mineral and Energy Board shall be without warranty of any

kind, either express, implied, or statutory, including, but not limited to, the implied warranties of merchantability and fitness for a particular purpose. Should the mineral lease awarded by the Louisiana State Mineral and Energy Board be subsequently modified, cancelled or abrogated due to the existence of conflicting leases, operating agreements, private claims or other future obligations or conditions which may affect all or any portion of the leased Tract, it shall not relieve the Lessee of the obligation to pay any bonus due thereon to the Louisiana State Mineral and Energy Board, nor shall the Louisiana State Mineral and Energy Board be obligated to refund any consideration paid by the Lessor prior to such modification, cancellation, or abrogation, including, but not limited to, bonuses, rentals and royalties.

NOTE: The State of Louisiana does hereby reserve, and this lease shall be subject to, the imprescriptible right of surface use in the nature of a servitude in favor of the Department of Natural Resources, including its Offices and Commissions, for the sole purpose of implementing, constructing, servicing and maintaining approved coastal zone management and/or restoration projects. Utilization of any and all rights derived under this lease by the mineral lessee, its agents, successors or assigns, shall not interfere with nor hinder the reasonable surface use by the Department of Natural Resources, its Offices or Commissions, as herein above reserved.

Applicant: THEOPHILUS OIL, GAS & LAND SERVICES, LLC

Bidder	Cash Payment	Price/Acre	Rental	Oil	Gas	Other

**Legend**

- 13060085
- Blocks
- Active\_Leases

TERREBONNE PARISH

TERREBONNE BAY

SL 199

P.O.B.

ST0116

SOUTH TIMBALIER AREA, REVISED



**TRACT 43282 - Terrebonne Parish, Louisiana**

All of the lands now or formerly constituting the beds and bottoms of all water bodies of every nature and description as to which title is vested in the State of Louisiana, together with all islands arising therein and other lands formed by accretion or by reliction, where allowed by law, excepting tax adjudicated lands, and not presently under mineral lease on June 12, 2013, situated in Terrebonne Parish, Louisiana, and more particularly described as follows: Beginning at a point having Coordinates of X = 2,268,610.49 and Y = 182,695.48; thence East 6,582.43 feet to a point having Coordinates of X = 2,275,192.92 and Y = 182,695.48; thence South 7,623.18 feet to a point on the boundary of State Lease No. 188, as amended, having Coordinates of X = 2,275,192.92 and Y = 175,072.30; thence along the boundary of said State Lease No. 188 the following courses and distances: South 89 degrees 34 minutes 59 seconds West 915.33 feet to a point having Coordinates of X = 2,274,277.61 and Y = 175,065.64, South 2,079.28 feet to a point having Coordinates of X = 2,274,277.61 and Y = 172,986.36, South 45 degrees 00 minutes 00 seconds West 360.00 feet to a point having Coordinates of X = 2,274,023.05 and Y = 172,731.80, and West 2,140.40 feet to a Northwest corner, also being a Northeast corner of State Lease No. 301, as amended, having Coordinates of X = 2,271,882.65 and Y = 172,731.80; thence along the boundary of said State Lease No. 301, the following courses and distances: West 1,159.60 feet to a point having Coordinates of X = 2,270,723.05 and Y = 172,731.80, South 53 degrees 30 minutes 00 seconds West 3,089.99 feet to a point having Coordinates of X = 2,268,239.14 and Y = 170,893.80, North 09 degrees 10 minutes 30 seconds East 2,328.94 feet to a point having Coordinates of X = 2,268,610.49 and Y = 173,192.94, and North 2,085.26 feet to a point having Coordinates of X = 2,268,610.49 and Y = 175,278.20; thence North 7,417.28 feet to the point of beginning, containing approximately **1,502.31 acres**, all as more particularly outlined on a plat on file in the Office of Mineral Resources, Department of Natural Resources. All bearings, distances and coordinates are based on Louisiana Coordinate System of 1927, (North or South Zone), where applicable.

NOTE: The above description of the Tract nominated for lease has been provided and corrected, where required, exclusively by the nomination party. Any mineral lease selected from this Tract and awarded by the Louisiana State Mineral and Energy Board shall be without warranty of any kind, either express, implied, or statutory, including, but not limited to, the implied warranties of merchantability and fitness for a particular purpose. Should the mineral lease awarded by the Louisiana State Mineral and Energy Board be subsequently modified, cancelled or abrogated due to the existence of conflicting leases, operating agreements, private claims or other future obligations or conditions which may affect all or any portion of the leased Tract, it shall not relieve the Lessee of the obligation to pay any bonus due thereon to the Louisiana State Mineral and Energy Board, nor shall the Louisiana State Mineral and Energy Board be obligated to refund any consideration paid by the Lessor prior to such

modification, cancellation, or abrogation, including, but not limited to, bonuses, rentals and royalties.

NOTE: The State of Louisiana does hereby reserve, and this lease shall be subject to, the imprescriptible right of surface use in the nature of a servitude in favor of the Department of Natural Resources, including its Offices and Commissions, for the sole purpose of implementing, constructing, servicing and maintaining approved coastal zone management and/or restoration projects. Utilization of any and all rights derived under this lease by the mineral lessee, its agents, successors or assigns, shall not interfere with nor hinder the reasonable surface use by the Department of Natural Resources, its Offices or Commissions, as herein above reserved.

Applicant: THEOPHILUS OIL, GAS & LAND SERVICES, LLC

Bidder	Cash Payment	Price/Acre	Rental	Oil	Gas	Other



13060088  
Blocks  
Active\_Lease

TERREBONNE PARISH

TIMBALIER BAY

P.O.B.

SL 188

SL 301

0 3,000 Feet



ST0116

SOUTH TIMBALIER AREA,  
REVISED

**TRACT 43283 - Portion of Blocks 115, 116, and 117, South Timbalier Area, Revised, Terrebonne Parish, Louisiana**

All of the lands now or formerly constituting the beds and bottoms of all water bodies of every nature and description as to which title is vested in the State of Louisiana, together with all islands arising therein and other lands formed by accretion or by reliction, where allowed by law, excepting tax adjudicated lands, and not presently under mineral lease on June 12, 2013, situated in Terrebonne Parish, Louisiana, and more particularly described as follows: Beginning at a point within Block 115, South Timbalier Area, Revised, having Coordinates of X = 2,252,550.00 and Y = 182,695.48; thence East 7,249.00 feet to a point within Block 116, South Timbalier Area, Revised, having Coordinates of X = 2,259,799.00 and Y = 182,695.48; thence South 7,600.00 feet to a point on the North line of State Lease No. 1247, as amended, having Coordinates of X = 2,259,799.00 and Y = 175,095.48; thence along the boundary of said State Lease No. 1247 the following courses and distances: West 1,590.96 feet to a point having Coordinates of X = 2,258,208.04 and Y = 175,095.48, South 200.00 feet to a point having Coordinates of X = 2,258,208.04 and Y = 174,895.48 and West 4,050.00 feet to its Northwest corner, having Coordinates of X = 2,254,158.04 and Y = 174,895.48; thence West 1,608.04 feet to a point within Block 117, South Timbalier Area, Revised, having Coordinates of X = 2,252,550.00 and Y = 174,895.48; thence North 7,800.00 feet to the point of beginning, **LESS AND EXCEPT** any right, title, and interest in lands owned by and not under lease from the State of Louisiana, on behalf of the Terrebonne Parish School Board, situated in Section 16, Township 22 South, Range 19 East, Terrebonne Parish, Louisiana, contained within the above described tract, containing approximately **1,290.73 acres**, all as more particularly outlined on a plat on file in the Office of Mineral Resources, Department of Natural Resources. All bearings, distances and coordinates are based on Louisiana Coordinate System of 1927, (North or South Zone), where applicable.

NOTE: The above description of the Tract nominated for lease has been provided and corrected, where required, exclusively by the nomination party. Any mineral lease selected from this Tract and awarded by the Louisiana State Mineral and Energy Board shall be without warranty of any kind, either express, implied, or statutory, including, but not limited to, the implied warranties of merchantability and fitness for a particular purpose. Should the mineral lease awarded by the Louisiana State Mineral and Energy Board be subsequently modified, cancelled or abrogated due to the existence of conflicting leases, operating agreements, private claims or other future obligations or conditions which may affect all or any portion of the leased Tract, it shall not relieve the Lessee of the obligation to pay any bonus due thereon to the Louisiana State Mineral and Energy Board, nor shall the Louisiana State Mineral and Energy Board be obligated to refund any consideration paid by the Lessor prior to such modification, cancellation, or abrogation, including, but not limited to, bonuses, rentals and royalties.

NOTE: The State of Louisiana does hereby reserve, and this lease shall be subject to, the imprescriptible right of surface use in the nature of a servitude in favor of the Department of Natural Resources, including its Offices and Commissions, for the sole purpose of implementing, constructing, servicing and maintaining approved coastal zone management and/or restoration projects. Utilization of any and all rights derived under this lease by the mineral lessee, its agents, successors or assigns, shall not interfere with nor hinder the reasonable surface use by the Department of Natural Resources, its Offices or Commissions, as herein above reserved.

Applicant: THEOPHILUS OIL, GAS & LAND SERVICES, LLC

Bidder	Cash Payment	Price/Acre	Rental	Oil	Gas	Other

**Legend**

- 13060086
- Blocks
- Active\_Leases

TERREBONNE PARISH

ST0116

TERREBONNE BAY

P.O.B.

ST0115

SOUTH TIMBALIER AREA, REVISED

ST0117

SL 1247



**TRACT 43284 - Portion of Block 116, South Timbalier Area, Revised, Terrebonne Parish, Louisiana**

All of the lands now or formerly constituting the beds and bottoms of all water bodies of every nature and description as to which title is vested in the State of Louisiana, together with all islands arising therein and other lands formed by accretion or by reliction, where allowed by law, excepting tax adjudicated lands, and not presently under mineral lease on June 12, 2013, situated in Terrebonne Parish, Louisiana, and more particularly described as follows: Beginning at a point within Block 116, South Timbalier Area, Revised, having Coordinates of X = 2,259,799.00 and Y = 182,695.48; thence East 8,811.49 feet to a point having Coordinates of X = 2,268,610.49 and Y = 182,695.48; thence South 7,417.28 feet to a point on the boundary of State Lease No. 301, as amended, having Coordinates of X = 2,268,610.49 and Y = 175,278.20; thence along the boundary of said State Lease No. 301 the following courses and distances: North 71 degrees 10 minutes 13 seconds West 435.40 feet to a point having Coordinates of X = 2,268,198.39 and Y = 175,418.73, West 2,969.74 feet to a point having Coordinates of X = 2,265,228.65 and Y = 175,418.73, North 900.00 feet to a point having Coordinates of X = 2,265,228.65 and Y = 176,318.73, and West 3,149.99 feet to a Northwest corner of said State Lease No. 301, also being a Northeast corner of State Lease No. 1247, as amended, also being a point on the East boundary of said Block 116, South Timbalier Area, Revised, having Coordinates of X = 2,262,078.66 and Y = 176,318.73; thence along the boundary of said State Lease No. 1247, the following courses and distances: West 470.61 feet to a point having Coordinates of X = 2,261,608.04 and Y = 176,318.73, South 1,223.25 feet to a point having Coordinates of X = 2,261,608.04 and Y = 175,095.48, and West 1,809.04 feet to a point having Coordinates of X = 2,259,799.00 and Y = 175,095.48; thence North 7,600.00 feet to the point of beginning, containing approximately **1,411.25 acres**, all as more particularly outlined on a plat on file in the Office of Mineral Resources, Department of Natural Resources. All bearings, distances and coordinates are based on Louisiana Coordinate System of 1927, (North or South Zone), where applicable.

NOTE: The above description of the Tract nominated for lease has been provided and corrected, where required, exclusively by the nomination party. Any mineral lease selected from this Tract and awarded by the Louisiana State Mineral and Energy Board shall be without warranty of any kind, either express, implied, or statutory, including, but not limited to, the implied warranties of merchantability and fitness for a particular purpose. Should the mineral lease awarded by the Louisiana State Mineral and Energy Board be subsequently modified, cancelled or abrogated due to the existence of conflicting leases, operating agreements, private claims or other future obligations or conditions which may affect all or any portion of the leased Tract, it shall not relieve the Lessee of the obligation to pay any bonus due thereon to the Louisiana State Mineral and Energy Board, nor shall the Louisiana State Mineral and Energy Board be obligated to refund any consideration paid by the Lessor prior to such

modification, cancellation, or abrogation, including, but not limited to, bonuses, rentals and royalties.

NOTE: The State of Louisiana does hereby reserve, and this lease shall be subject to, the imprescriptible right of surface use in the nature of a servitude in favor of the Department of Natural Resources, including its Offices and Commissions, for the sole purpose of implementing, constructing, servicing and maintaining approved coastal zone management and/or restoration projects. Utilization of any and all rights derived under this lease by the mineral lessee, its agents, successors or assigns, shall not interfere with nor hinder the reasonable surface use by the Department of Natural Resources, its Offices or Commissions, as herein above reserved.

Applicant: THEOPHILUS OIL, GAS & LAND SERVICES, LLC

Bidder	Cash Payment	Price/Acre	Rental	Oil	Gas	Other

13060087

Blocks

Active\_Lease

TERREBONNE PARISH

TERREBONNE BAY

ST0116

P.O.B.

SOUTH TIMBALIER AREA, REVISED

SL 301

SL 1247

