

TRACT 43297 - Vernon Parish, Louisiana

All of the mineral rights only under land adjudicated to and acquired by the State of Louisiana in and through a proper tax sale, and subsequently alienated by the State which retained the mineral rights thereto, and which is not under valid mineral lease from the State of Louisiana on June 12, 2013, situated in Vernon Parish, Louisiana, and being more fully described as follows: The West half (W/2) of the Northwest quarter (NW/4) of the Northeast quarter (NE/4) of Section 20, Township 1 South, Range 11 West, Vernon Parish, Louisiana, less 1 1/2 acre Right of Way, being the same land adjudicated to the State of Louisiana for unpaid taxes for the year 1930, in the name of W.J. Craft. Subsequently, the State of Louisiana granted Patent No. 13874, dated June 8, 1945 to T.K. Craft, containing approximately **18.5 acres**, all as more particularly outlined on a plat on file in the Office of Mineral Resources, Department of Natural Resources. All bearings, distances and coordinates are based on Louisiana Coordinate System of 1927, (North or South Zone), where applicable.

NOTE: The above description of the Tract nominated for lease has been provided and corrected, where required, exclusively by the nomination party. Any mineral lease selected from this Tract and awarded by the Louisiana State Mineral and Energy Board shall be without warranty of any kind, either express, implied, or statutory, including, but not limited to, the implied warranties of merchantability and fitness for a particular purpose. Should the mineral lease awarded by the Louisiana State Mineral and Energy Board be subsequently modified, cancelled or abrogated due to the existence of conflicting leases, operating agreements, private claims or other future obligations or conditions which may affect all or any portion of the leased Tract, it shall not relieve the Lessee of the obligation to pay any bonus due thereon to the Louisiana State Mineral and Energy Board, nor shall the Louisiana State Mineral and Energy Board be obligated to refund any consideration paid by the Lessor prior to such modification, cancellation, or abrogation, including, but not limited to, bonuses, rentals and royalties.

Applicant: BASIN PROPERTIES, INC.

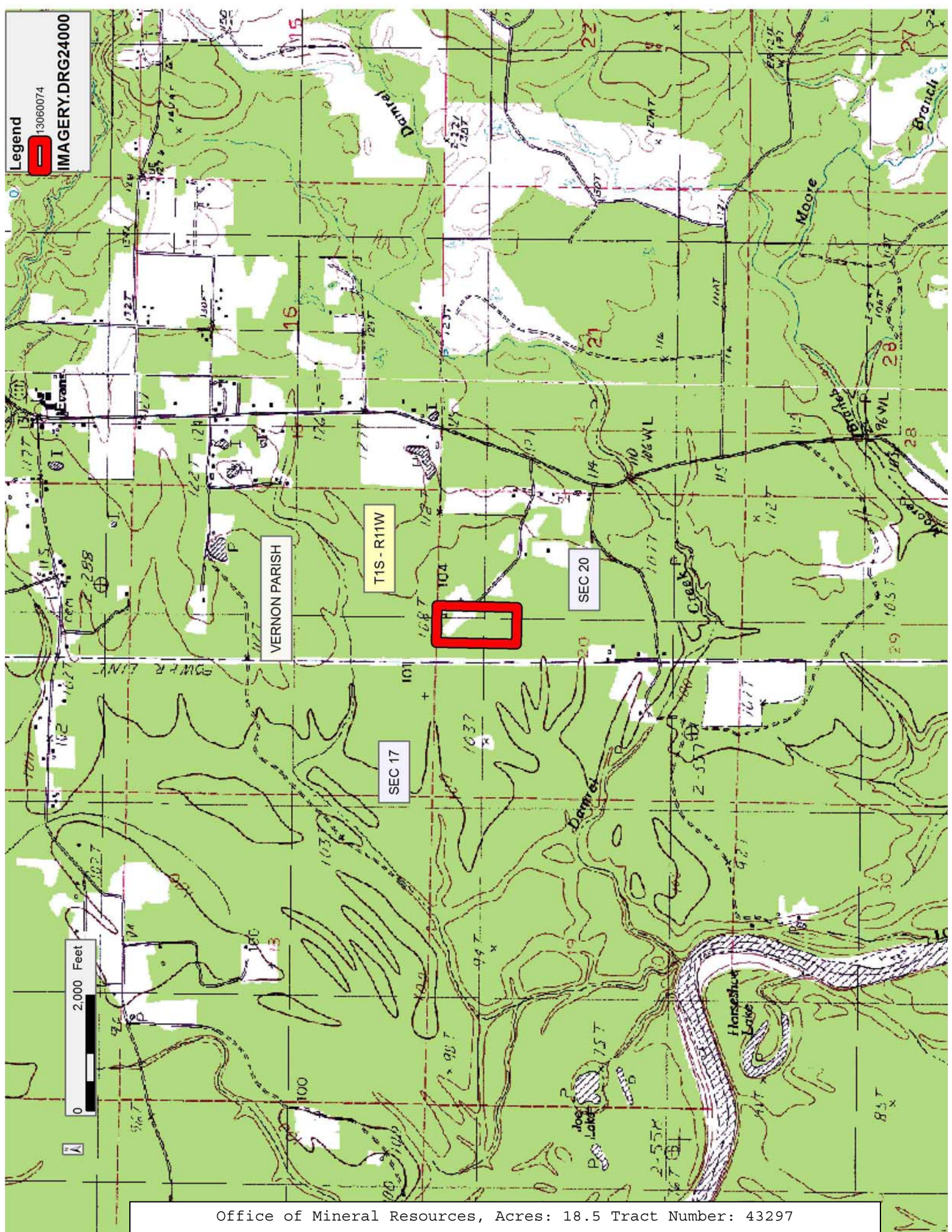
Bidder	Cash Payment	Price/Acre	Rental	Oil	Gas	Other

Legend

13060074

IMAGERY.DRG24000

2,000 Feet



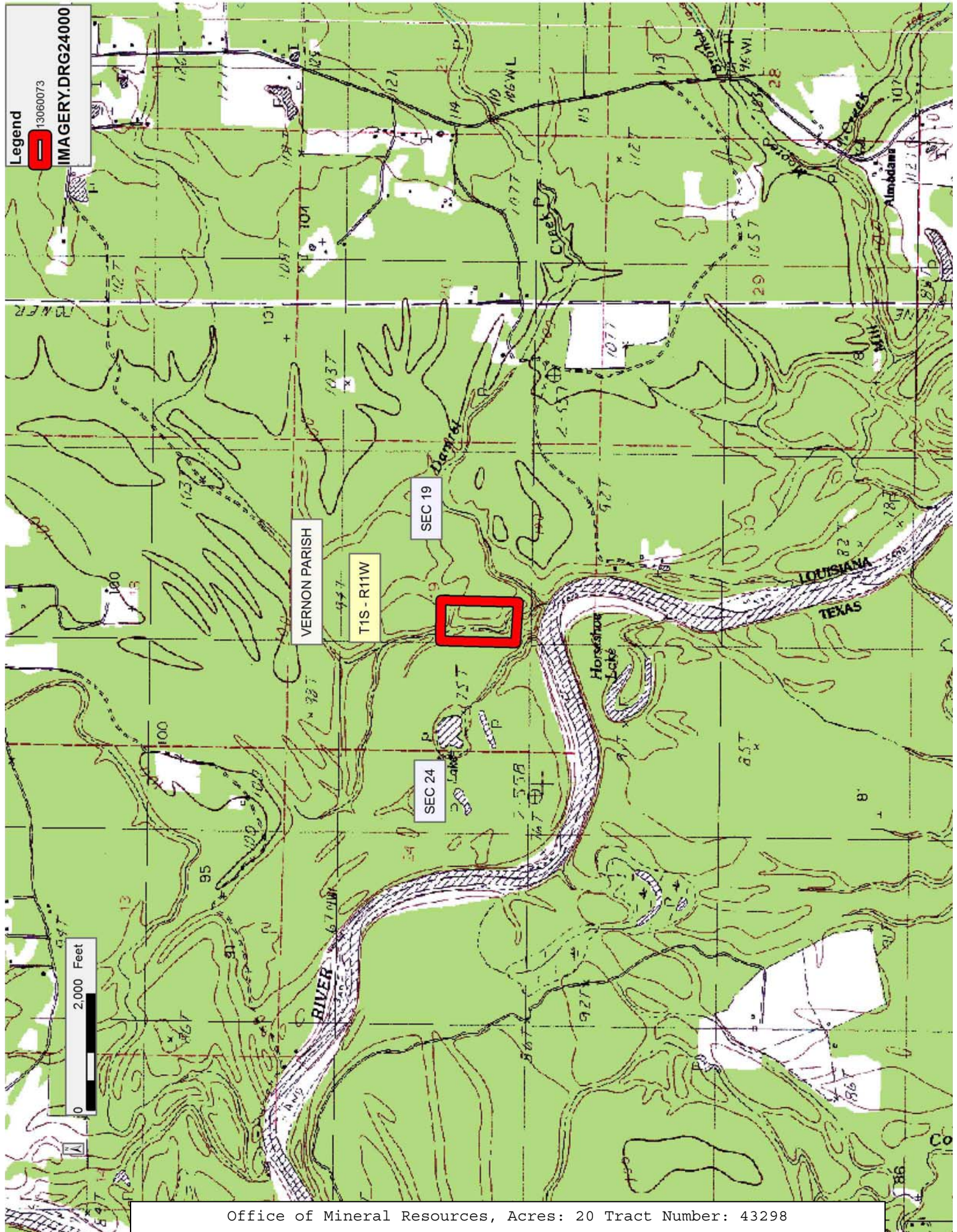
TRACT 43298 - Vernon Parish, Louisiana

All of the mineral rights only under land adjudicated to and acquired by the State of Louisiana in and through a proper tax sale, and subsequently alienated by the State which retained the mineral rights thereto, and which is not under valid mineral lease from the State of Louisiana on June 12, 2013, situated in Vernon Parish, Louisiana, and being more fully described as follows: The East half (E/2) of the Northeast quarter (NE/4) of the Southwest quarter (SW/4) of Section 19, Township 1 South, Range 11 West, Vernon Parish, Louisiana, being the same land adjudicated to the State of Louisiana for unpaid taxes for the year 1932, in the name of Copeland Chev. Co. Subsequently, the State of Louisiana granted Patent No. 14234, dated May 13, 1946 to W.M. Craft, containing approximately **20 acres**, all as more particularly outlined on a plat on file in the Office of Mineral Resources, Department of Natural Resources. All bearings, distances and coordinates are based on Louisiana Coordinate System of 1927, (North or South Zone), where applicable.

NOTE: The above description of the Tract nominated for lease has been provided and corrected, where required, exclusively by the nomination party. Any mineral lease selected from this Tract and awarded by the Louisiana State Mineral and Energy Board shall be without warranty of any kind, either express, implied, or statutory, including, but not limited to, the implied warranties of merchantability and fitness for a particular purpose. Should the mineral lease awarded by the Louisiana State Mineral and Energy Board be subsequently modified, cancelled or abrogated due to the existence of conflicting leases, operating agreements, private claims or other future obligations or conditions which may affect all or any portion of the leased Tract, it shall not relieve the Lessee of the obligation to pay any bonus due thereon to the Louisiana State Mineral and Energy Board, nor shall the Louisiana State Mineral and Energy Board be obligated to refund any consideration paid by the Lessor prior to such modification, cancellation, or abrogation, including, but not limited to, bonuses, rentals and royalties.

Applicant: BASIN PROPERTIES, INC.

Bidder	Cash Payment	Price/Acre	Rental	Oil	Gas	Other



Legend
13060073
IMAGERY.DRG24000

VERNON PARISH

T1S - R11W

SEC 19

SEC 24

Horseshoe Lake

LOUISIANA
TEXAS

2,000 Feet

TRACT 43299 - Vernon Parish, Louisiana

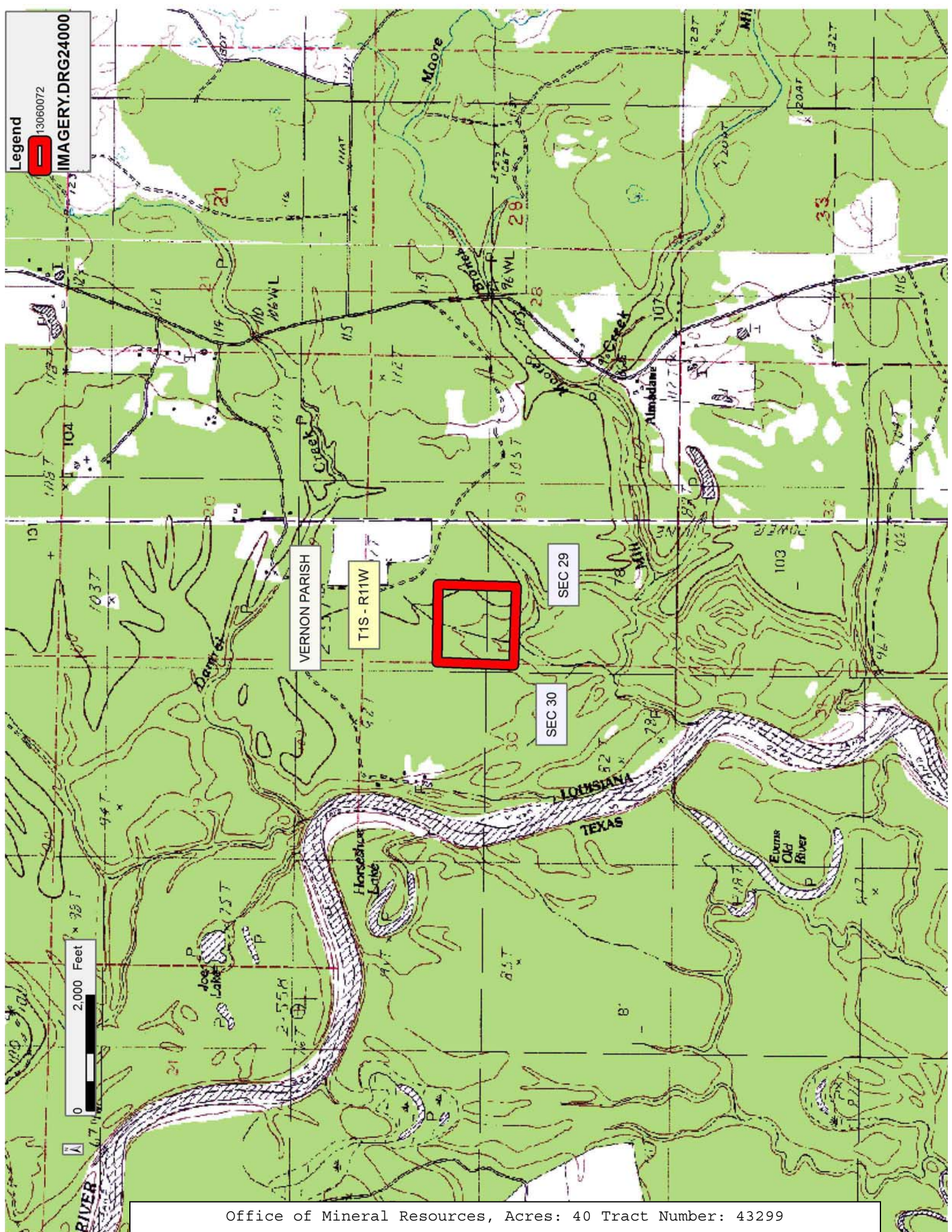
All of the mineral rights only under land adjudicated to and acquired by the State of Louisiana in and through a proper tax sale, and subsequently alienated by the State which retained the mineral rights thereto, and which is not under valid mineral lease from the State of Louisiana on June 12, 2013, situated in Vernon Parish, Louisiana, and being more fully described as follows: The Southwest quarter (SW/4) of the Northwest quarter (NW/4) of Section 29, Township 1 South, Range 11 West, Vernon Parish, Louisiana, being the same land adjudicated to the State of Louisiana for unpaid taxes for the year 1923, in the name of M.E. Stark. Subsequently, the State of Louisiana granted Patent No. 13614, dated September 2, 1944 to Norris B. Craft, containing approximately **40 acres**, all as more particularly outlined on a plat on file in the Office of Mineral Resources, Department of Natural Resources. All bearings, distances and coordinates are based on Louisiana Coordinate System of 1927, (North or South Zone), where applicable.

NOTE: The above description of the Tract nominated for lease has been provided and corrected, where required, exclusively by the nomination party. Any mineral lease selected from this Tract and awarded by the Louisiana State Mineral and Energy Board shall be without warranty of any kind, either express, implied, or statutory, including, but not limited to, the implied warranties of merchantability and fitness for a particular purpose. Should the mineral lease awarded by the Louisiana State Mineral and Energy Board be subsequently modified, cancelled or abrogated due to the existence of conflicting leases, operating agreements, private claims or other future obligations or conditions which may affect all or any portion of the leased Tract, it shall not relieve the Lessee of the obligation to pay any bonus due thereon to the Louisiana State Mineral and Energy Board, nor shall the Louisiana State Mineral and Energy Board be obligated to refund any consideration paid by the Lessor prior to such modification, cancellation, or abrogation, including, but not limited to, bonuses, rentals and royalties.

Applicant: BASIN PROPERTIES, INC.

Bidder	Cash Payment	Price/Acre	Rental	Oil	Gas	Other

Legend
13060072
IMAGERY.DRG24000



VERNON PARISH

T1S - R11W

SEC 29

SEC 30

2,000 Feet

TRACT 43300 - Vernon Parish, Louisiana

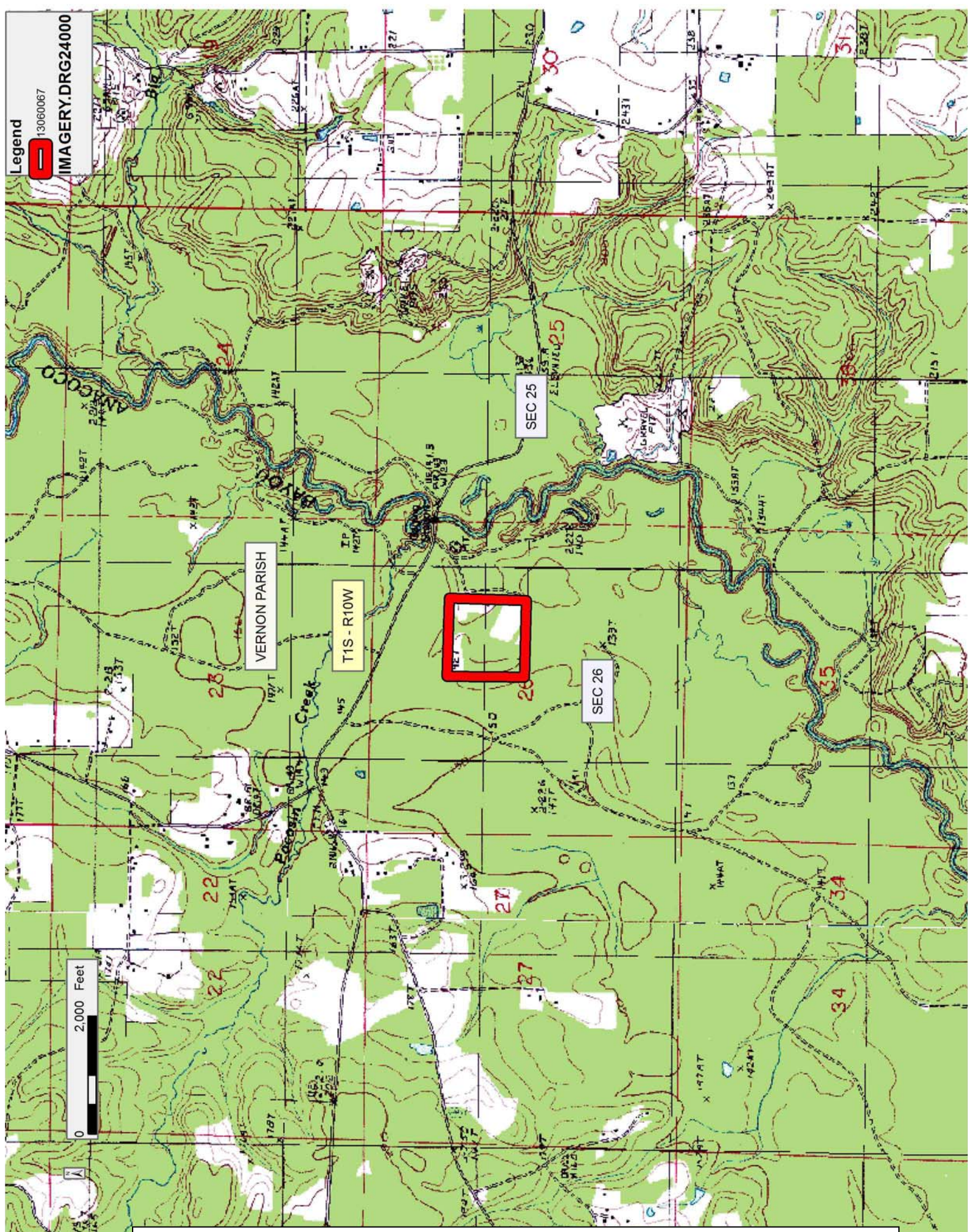
All of the mineral rights only under land adjudicated to and acquired by the State of Louisiana in and through a proper tax sale, and subsequently alienated by the State which retained the mineral rights thereto, and which is not under valid mineral lease from the State of Louisiana on June 12, 2013, situated in Vernon Parish, Louisiana, and being more fully described as follows: The Southwest quarter (SW/4) of the Northeast quarter (NE/4) of Section 26, Township 1 South, Range 10 West, Vernon Parish, Louisiana, being the same land adjudicated to the State of Louisiana for unpaid taxes for the year 1933, in the name of W.A. Ward. Subsequently, the State of Louisiana granted Patent No. 18746, dated December 5, 1957 to Alton Dowden, containing approximately **40 acres**, all as more particularly outlined on a plat on file in the Office of Mineral Resources, Department of Natural Resources. All bearings, distances and coordinates are based on Louisiana Coordinate System of 1927, (North or South Zone), where applicable.

NOTE: The above description of the Tract nominated for lease has been provided and corrected, where required, exclusively by the nomination party. Any mineral lease selected from this Tract and awarded by the Louisiana State Mineral and Energy Board shall be without warranty of any kind, either express, implied, or statutory, including, but not limited to, the implied warranties of merchantability and fitness for a particular purpose. Should the mineral lease awarded by the Louisiana State Mineral and Energy Board be subsequently modified, cancelled or abrogated due to the existence of conflicting leases, operating agreements, private claims or other future obligations or conditions which may affect all or any portion of the leased Tract, it shall not relieve the Lessee of the obligation to pay any bonus due thereon to the Louisiana State Mineral and Energy Board, nor shall the Louisiana State Mineral and Energy Board be obligated to refund any consideration paid by the Lessor prior to such modification, cancellation, or abrogation, including, but not limited to, bonuses, rentals and royalties.

Applicant: BASIN PROPERTIES, INC.

Bidder	Cash Payment	Price/Acre	Rental	Oil	Gas	Other

Legend
13060067
IMAGERY.DRG24000



TRACT 43301 - Vernon Parish, Louisiana

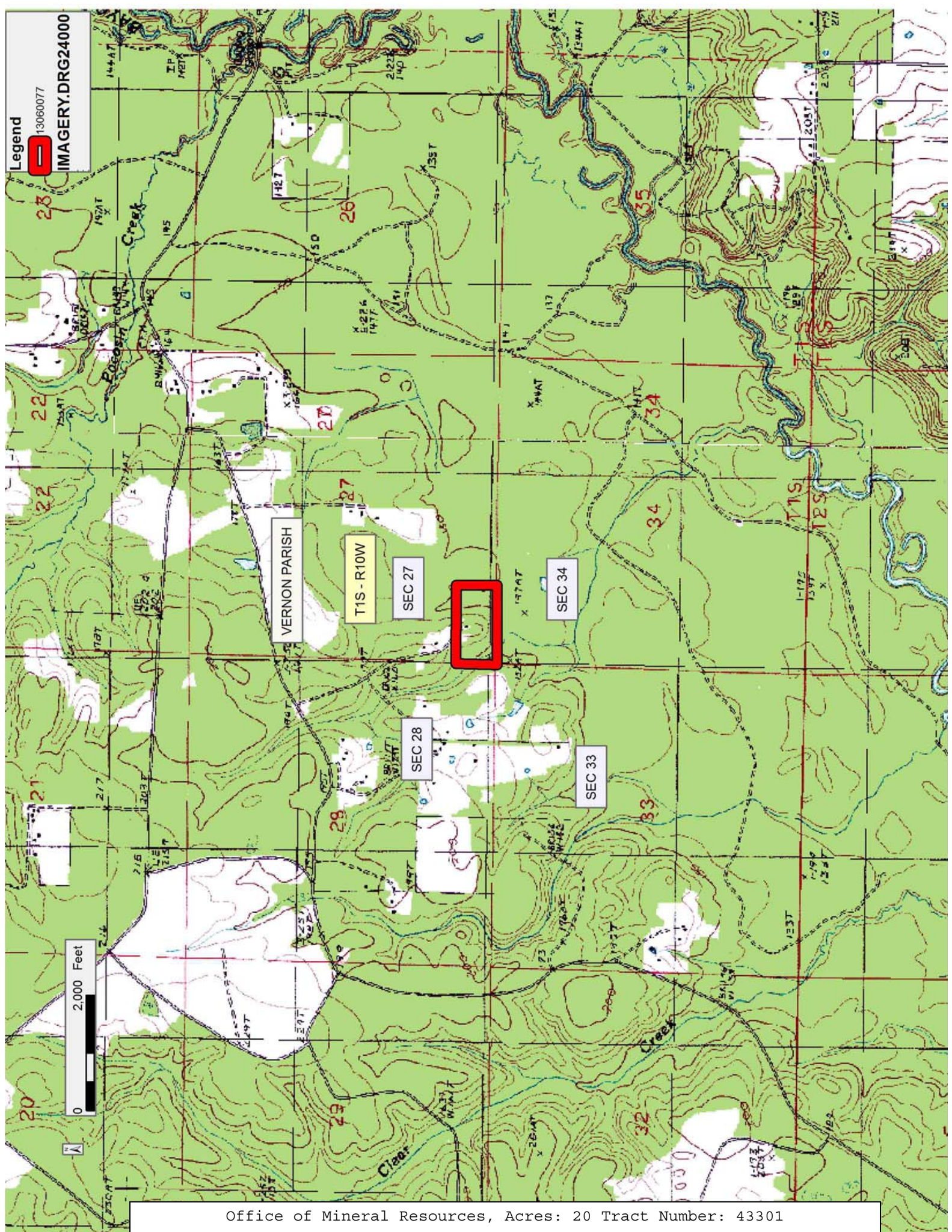
All of the mineral rights only under land adjudicated to and acquired by the State of Louisiana in and through a proper tax sale, and subsequently alienated by the State which retained the mineral rights thereto, and which is not under valid mineral lease from the State of Louisiana on June 12, 2013, situated in Vernon Parish, Louisiana, and being more fully described as follows: The South half (S/2) of the Southwest quarter (SW/4) of the Southwest quarter (SW/4) of Section 27, Township 1 South, Range 10 West, Vernon Parish, Louisiana, being the same land adjudicated to the State of Louisiana for unpaid taxes for the year 1931, in the name of F. Keel. Subsequently, the State of Louisiana granted Patent No. 17737, dated February 1, 1954 to Jesse N. Keel, containing approximately **20 acres**, all as more particularly outlined on a plat on file in the Office of Mineral Resources, Department of Natural Resources. All bearings, distances and coordinates are based on Louisiana Coordinate System of 1927, (North or South Zone), where applicable.

NOTE: The above description of the Tract nominated for lease has been provided and corrected, where required, exclusively by the nomination party. Any mineral lease selected from this Tract and awarded by the Louisiana State Mineral and Energy Board shall be without warranty of any kind, either express, implied, or statutory, including, but not limited to, the implied warranties of merchantability and fitness for a particular purpose. Should the mineral lease awarded by the Louisiana State Mineral and Energy Board be subsequently modified, cancelled or abrogated due to the existence of conflicting leases, operating agreements, private claims or other future obligations or conditions which may affect all or any portion of the leased Tract, it shall not relieve the Lessee of the obligation to pay any bonus due thereon to the Louisiana State Mineral and Energy Board, nor shall the Louisiana State Mineral and Energy Board be obligated to refund any consideration paid by the Lessor prior to such modification, cancellation, or abrogation, including, but not limited to, bonuses, rentals and royalties.

Applicant: BASIN PROPERTIES, INC.

Bidder	Cash Payment	Price/Acre	Rental	Oil	Gas	Other

Legend
13060077
IMAGERY.DRG24000



TRACT 43302 - Vernon Parish, Louisiana

All of the mineral rights only under land adjudicated to and acquired by the State of Louisiana in and through a proper tax sale, and subsequently alienated by the State which retained the mineral rights thereto, and which is not under valid mineral lease from the State of Louisiana on June 12, 2013, situated in Vernon Parish, Louisiana, and being more fully described as follows: The South half (S/2) of the Northeast quarter (NE/4) of the Northeast quarter (NE/4) of Section 2, Township 2 South, Range 10 West, Vernon Parish, Louisiana, being the same land adjudicated to the State of Louisiana for unpaid taxes for the year 1931, in the name of J.B. Jones. Subsequently, the State of Louisiana granted Patent No. 13589, dated August 1, 1944 to Andy Goins, containing approximately **20 acres**, all as more particularly outlined on a plat on file in the Office of Mineral Resources, Department of Natural Resources. All bearings, distances and coordinates are based on Louisiana Coordinate System of 1927, (North or South Zone), where applicable.

NOTE: The above description of the Tract nominated for lease has been provided and corrected, where required, exclusively by the nomination party. Any mineral lease selected from this Tract and awarded by the Louisiana State Mineral and Energy Board shall be without warranty of any kind, either express, implied, or statutory, including, but not limited to, the implied warranties of merchantability and fitness for a particular purpose. Should the mineral lease awarded by the Louisiana State Mineral and Energy Board be subsequently modified, cancelled or abrogated due to the existence of conflicting leases, operating agreements, private claims or other future obligations or conditions which may affect all or any portion of the leased Tract, it shall not relieve the Lessee of the obligation to pay any bonus due thereon to the Louisiana State Mineral and Energy Board, nor shall the Louisiana State Mineral and Energy Board be obligated to refund any consideration paid by the Lessor prior to such modification, cancellation, or abrogation, including, but not limited to, bonuses, rentals and royalties.

Applicant: BASIN PROPERTIES, INC.

Bidder	Cash Payment	Price/Acre	Rental	Oil	Gas	Other

Legend
13060069
IMAGERY.DRG24000

