

TRACT 43326 - Portion of Block 13, South Timbalier Area, Revised, Terrebonne Parish, Louisiana

The beds and bottoms of all water bodies belonging to the State of Louisiana located in Block 13, South Timbalier Area, Revised, together with any present lands formed by accretion to the shoreline or islands formed therein, located in Terrebonne Parish, Louisiana, owned by and not presently under mineral lease as of July 10, 2013, from the State of Louisiana, the geographical area of which is more fully described as follows: Beginning at a point on the North boundary of Block 13, South Timbalier Area, Revised, also being a point on the Louisiana Coastline, as decreed by the Supreme Court of the United States, as determined by a Special Master appointed therein, in litigation styled *United States v. State of Louisiana et al No. 9 Original*, in 1975, having Coordinates of X = 2,277,605.50 and Y = 142,418.65; thence along said Coastline the following courses: Southeasterly on a straight line to point having Coordinates of X = 2,281,202 and Y = 141,484 and Southeasterly on a straight line to the Northwest corner of State Lease No. 17729 having Coordinates of X = 2,285,950.00 and Y = 140,584.62; thence South 5,737.34 feet along the West boundary of said State Lease No. 17729 to a point having Coordinates of X = 2,285,950.00 and Y = 134,847.28; thence West 8,344.50 feet to a point having Coordinates of X = 2,277,605.50 and Y = 134,847.28; thence North 7,571.38 feet to the point of beginning, containing approximately **1260.92 acres**, all as more particularly outlined on a plat on file in the Office of Mineral Resources, Department of Natural Resources. All bearings, distances and coordinates are based on Louisiana Coordinate System of 1927, (North or South Zone).

NOTE: The above description of the Tract nominated for lease has been provided and corrected, where required, exclusively by the nomination party. Any mineral lease selected from this Tract and awarded by the Louisiana State Mineral and Energy Board shall be without warranty of any kind, either express, implied, or statutory, including, but not limited to, the implied warranties of merchantability and fitness for a particular purpose. Should the mineral lease awarded by the Louisiana State Mineral and Energy Board be subsequently modified, cancelled or abrogated due to the existence of conflicting leases, operating agreements, private claims or other future obligations or conditions which may affect all or any portion of the leased Tract, it shall not relieve the Lessee of the obligation to pay any bonus due thereon to the Louisiana State Mineral and Energy Board, nor shall the Louisiana State Mineral and Energy Board be obligated to refund any consideration paid by the Lessor prior to such modification, cancellation, or abrogation, including, but not limited to, bonuses, rentals and royalties.

NOTE: The State of Louisiana does hereby reserve, and this lease shall be subject to, the imprescriptible right of surface use in the nature of a servitude in favor of the Department of Natural Resources, including its Offices and Commissions, for the sole purpose of implementing, constructing, servicing and maintaining approved coastal zone management

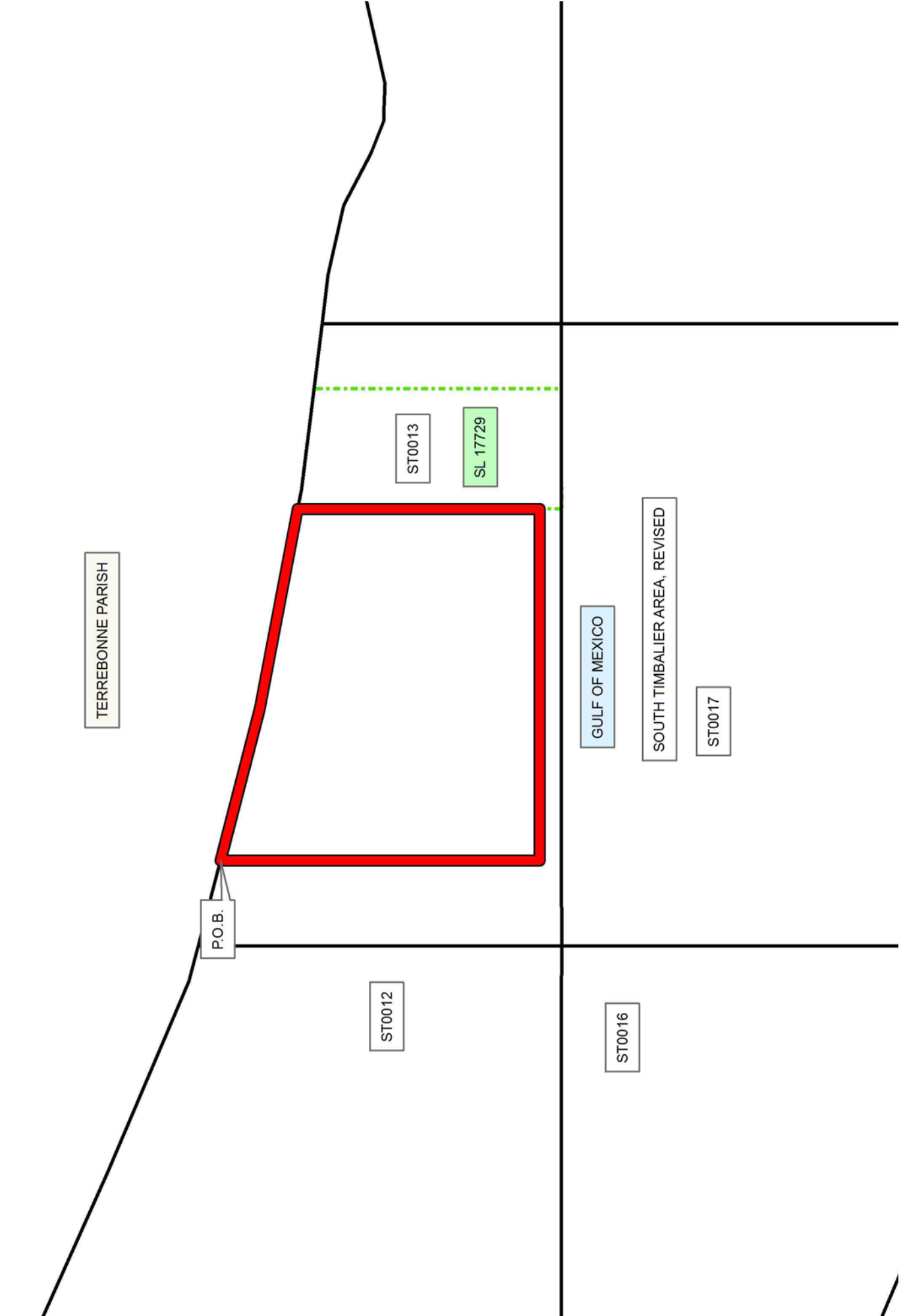
and/or restoration projects. Utilization of any and all rights derived under this lease by the mineral lessee, its agents, successors or assigns, shall not interfere with nor hinder the reasonable surface use by the Department of Natural Resources, its Offices or Commissions, as herein above reserved.

Applicant: CYPRESS ENERGY CORPORATION

Bidder	Cash Payment	Price/Acre	Rental	Oil	Gas	Other

Legend

- 13070078
- Blocks
- Active_Lease



TRACT 43327 - Portion of Blocks 10, and 11, South Timbalier Area, Revised, Terrebonne Parish, Louisiana

The beds and bottoms of all water bodies belonging to the State of Louisiana located in Blocks 10, and 11, South Timbalier Area, Revised, together with any present lands formed by accretion to the shoreline or islands formed therein, located in Terrebonne Parish, Louisiana, owned by and not presently under mineral lease as of July 10, 2013, from the State of Louisiana, the geographical area of which is more fully described as follows: Beginning at a point within Block 10, South Timbalier Area, Revised having Coordinates of X = 2,245,721.53 and Y = 141,553.53; thence East 5,249.97 feet to a point having Coordinates of X = 2,250,971.50 and Y = 141,553.53; thence North 8.81 feet to a point being the Southwest corner of State Lease No. 21137 having Coordinates of X = 2,250,971.50 and Y = 141,562.34; thence South 89 degrees 42 minutes 05 seconds East 1,690.05 feet along the Southern boundary of said State Lease No. 21137 to a point being the Northwest corner of State Lease No. 2986, as amended having Coordinates of X = 2,252,661.53 and Y = 141,553.53; thence along the boundaries of said State Lease No. 2986 the following courses: South 2,550.00 feet to a point having Coordinates of X = 2,252,661.53 and Y = 139,003.53, East 1,176.51 feet to a point having Coordinates of X = 2,253,838.04 and Y = 139,003.53, South 2,040.00 feet to a point having Coordinates of X = 2,253,838.04 and Y = 136,963.53, East 4,020.00 feet to a point having Coordinates of X = 2,257,858.04 and Y = 136,963.53, North 3,300.00 feet to a point having Coordinates of X = 2,257,858.04 and Y = 140,263.53 and East 1,387.98 feet to a point having Coordinates of X = 2,259,246.02 and Y = 140,263.53; thence South 5,416.25 feet to a point having Coordinates of X = 2,259,246.02 and Y = 134,847.28; thence West 13,524.49 feet to a point having Coordinates of X = 2,245,721.53 and Y = 134,847.28; thence North 6,706.25 feet to the point of beginning, containing approximately **1548.75 acres, LESS AND EXCEPT** that portion thereof, if any, lying seaward of the line three nautical miles from the coast line of Louisiana, as said three mile line has been decreed by the Supreme Court of the United States, as determined by a Special Master appointed therein, in litigation styled **United States v. State of Louisiana et al No. 9 Original**, in 1975, all as more particularly outlined on a plat in the Office of Mineral Resources, Department of Natural Resources. All bearings, distances and coordinates are based on the Louisiana Coordinate System of 1927, (South Zone).

NOTE: The above description of the Tract nominated for lease has been provided and corrected, where required, exclusively by the nomination party. Any mineral lease selected from this Tract and awarded by the Louisiana State Mineral and Energy Board shall be without warranty of any kind, either express, implied, or statutory, including, but not limited to, the implied warranties of merchantability and fitness for a particular purpose. Should the mineral lease awarded by the Louisiana State Mineral and Energy Board be subsequently modified, cancelled or abrogated due to the existence of conflicting leases, operating agreements, private claims or other future obligations or conditions which may affect all or any

portion of the leased Tract, it shall not relieve the Lessee of the obligation to pay any bonus due thereon to the Louisiana State Mineral and Energy Board, nor shall the Louisiana State Mineral and Energy Board be obligated to refund any consideration paid by the Lessor prior to such modification, cancellation, or abrogation, including, but not limited to, bonuses, rentals and royalties.

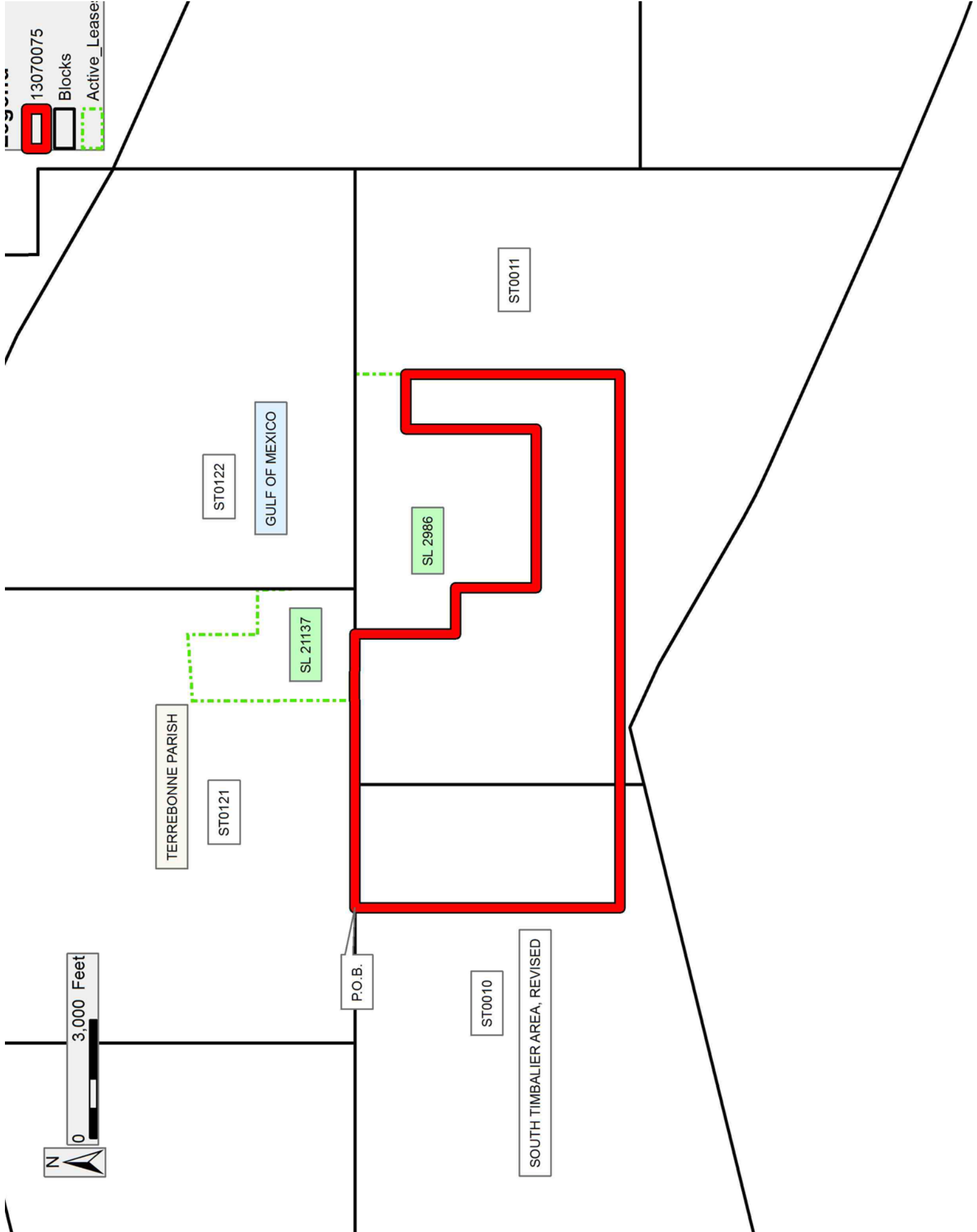
NOTE: The State of Louisiana does hereby reserve, and this lease shall be subject to, the imprescriptible right of surface use in the nature of a servitude in favor of the Department of Natural Resources, including its Offices and Commissions, for the sole purpose of implementing, constructing, servicing and maintaining approved coastal zone management and/or restoration projects. Utilization of any and all rights derived under this lease by the mineral lessee, its agents, successors or assigns, shall not interfere with nor hinder the reasonable surface use by the Department of Natural Resources, its Offices or Commissions, as herein above reserved.

NOTE: It appears, according to our records, that a portion of this Tract is located within the restrictive safety fairway area as set out by the Corps of Engineers, U.S. Army and/or the restrictive anchorage area as set out by the U.S. Coast Guard.

Applicant: CYPRESS ENERGY CORPORATION

Bidder	Cash Payment	Price/Acre	Rental	Oil	Gas	Other

13070075
 Blocks
 Active_Lease:



TRACT 43328 - Portion of Blocks 13, and 14, South Timbalier Area, Revised, Lafourche and Terrebonne Parishes, Louisiana

The beds and bottoms of all water bodies belonging to the State of Louisiana located in Blocks 13, and 14, South Timbalier Area, Revised, together with any present lands formed by accretion to the shoreline or islands formed therein, located in Lafourche and Terrebonne Parishes, Louisiana, owned by and not presently under mineral lease as of July 10, 2013, from the State of Louisiana, the geographical area of which is more fully described as follows: Beginning at a point within Block 13, South Timbalier Area, Revised, also being a point on the Northeast corner of State Lease No. 17729 and a point on the Louisiana Coastline, as decreed by the Supreme Court of the United States, as determined by a Special Master appointed therein, in litigation styled United States v. State of Louisiana et al No. 9 Original, in 1975, having Coordinates of X = 2,288,800.00 and Y = 140,199.07; thence along said Coastline the following courses: Southeasterly on a straight line to point having Coordinates of X = 2,291,503 and Y = 139,861, Southeasterly on a straight line to point having Coordinates of X = 2,293,148 and Y = 139,498, Southeasterly on a straight line to point having Coordinates of X = 2,294,383 and Y = 138,846, Southeasterly on a straight line to point having Coordinates of X = 2,295,144 and Y = 138,550, Southeasterly on a straight line to point having Coordinates of X = 2,296,041 and Y = 138,519 and Northeasterly on a straight line to a point having Coordinates of X = 2,297,482.10 and Y = 138,838.73; thence South 4,508.73 feet to a point having Coordinates of X = 2,297,482.10 and Y = 134,330.00; thence West 8,682.11 feet to the Southeast corner of said State Lease No. 17729 having Coordinates of X = 2,288,800.00 and Y = 134,330.00; thence North 5,869.07 feet along the east boundary of said State Lease No. 17729 to the point of beginning, containing approximately **999.76 acres**, all as more particularly outlined on a plat on file in the Office of Mineral Resources, Department of Natural Resources. All bearings, distances and coordinates are based on Louisiana Coordinate System of 1927, (North or South Zone).

NOTE: The above description of the Tract nominated for lease has been provided and corrected, where required, exclusively by the nomination party. Any mineral lease selected from this Tract and awarded by the Louisiana State Mineral and Energy Board shall be without warranty of any kind, either express, implied, or statutory, including, but not limited to, the implied warranties of merchantability and fitness for a particular purpose. Should the mineral lease awarded by the Louisiana State Mineral and Energy Board be subsequently modified, cancelled or abrogated due to the existence of conflicting leases, operating agreements, private claims or other future obligations or conditions which may affect all or any portion of the leased Tract, it shall not relieve the Lessee of the obligation to pay any bonus due thereon to the Louisiana State Mineral and Energy Board, nor shall the Louisiana State Mineral and Energy Board be obligated to refund any consideration paid by the Lessor prior to such modification, cancellation, or abrogation, including, but not limited to, bonuses, rentals and royalties.

NOTE: The State of Louisiana does hereby reserve, and this lease shall be subject to, the imprescriptible right of surface use in the nature of a servitude in favor of the Department of Natural Resources, including its Offices and Commissions, for the sole purpose of implementing, constructing, servicing and maintaining approved coastal zone management and/or restoration projects. Utilization of any and all rights derived under this lease by the mineral lessee, its agents, successors or assigns, shall not interfere with nor hinder the reasonable surface use by the Department of Natural Resources, its Offices or Commissions, as herein above reserved.

Applicant: CYPRESS ENERGY CORPORATION

Bidder	Cash Payment	Price/Acre	Rental	Oil	Gas	Other

Legend

- 13070079
- Blocks
- Active_Lease
- Counties

