

TRACT 43329 - Caddo and De Soto Parishes, Louisiana

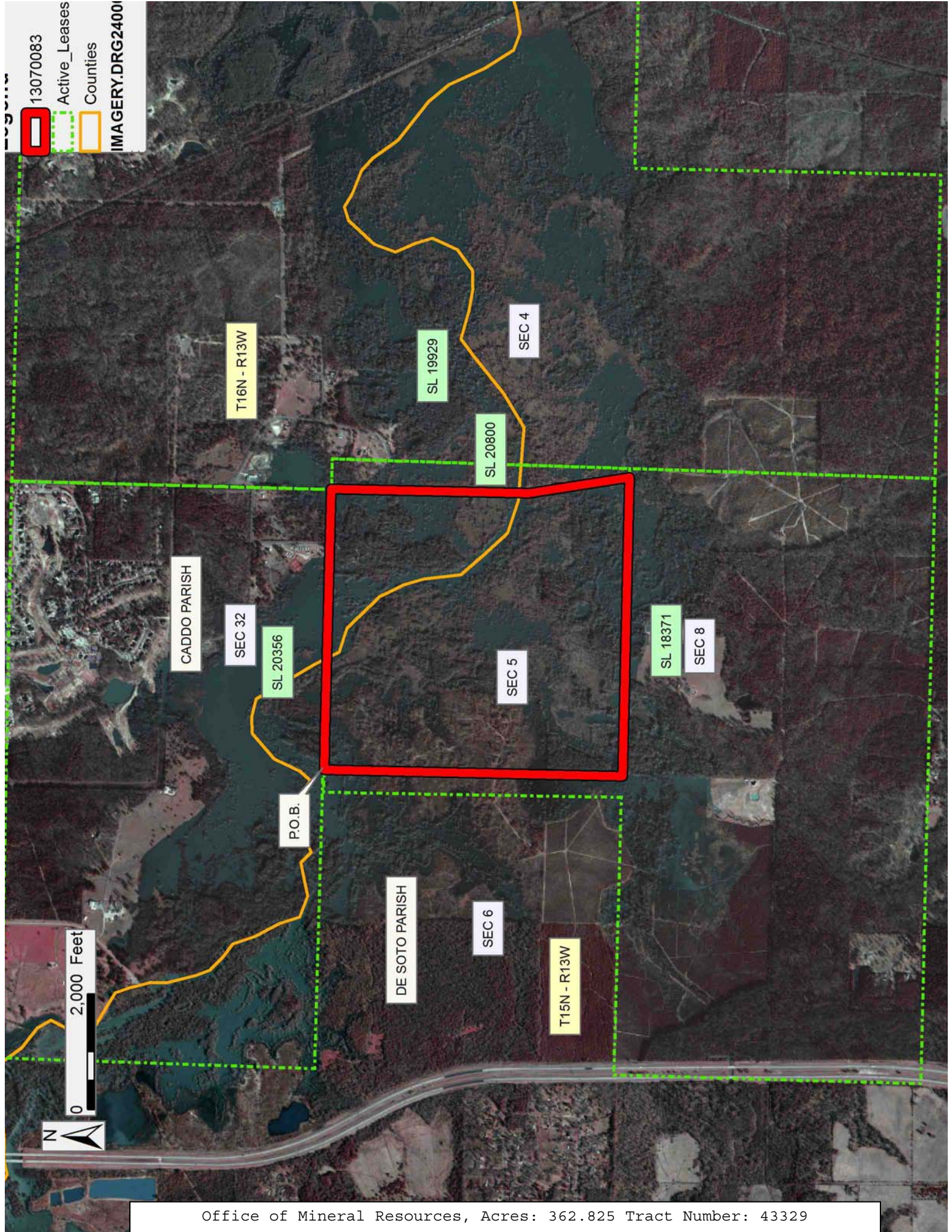
All of the lands now or formerly constituting the beds and bottoms of all water bodies of every nature and description as to which title is vested in the State of Louisiana, together with all islands arising therein and other lands formed by accretion or by reliction, where allowed by law, excepting tax adjudicated lands, and not presently under mineral lease on July 10, 2013, situated in Caddo and De Soto Parishes, Louisiana, and more particularly described as follows: Beginning at a point on the boundaries of State Lease No. 18371 and State Lease No. 20356, having Coordinates of X = 1,620,230.24 and Y = 605,376.80; thence along the boundary of said State Lease No. 20356 the following courses and distances: South 89 degrees 03 minutes 49 seconds East 461.42 feet to a point having Coordinates of X = 1,620,691.60 and Y = 605,369.26 and South 89 degrees 03 minutes 49 seconds East 4,391.69 feet to its Southeast corner, also being a Western corner of State Lease No. 19929, having Coordinates of X = 1,625,082.70 and Y = 605,297.50; thence continue South 89 degrees 03 minutes 49 seconds East 10.24 feet along said State Lease No. 19929 to a point being the Northwest corner of State Lease No. 20800 having Coordinates of X = 1,625,092.94 and Y = 605,297.33; thence along the boundary of said State Lease No. 20800 the following courses and distances: South 00 degrees 40 minutes 19 seconds West 3,422.41 feet to a point having Coordinates of X = 1,625,052.81 and Y = 601,875.16 and South 09 degrees 26 minutes 41 seconds East 1,755.60 feet to a point on the North boundary of said State Lease No. 18371 having Coordinates of X = 1,625,340.90 and Y = 600,143.36; thence along the boundary of said State Lease No. 18371 the following courses and distances: North 89 degrees 16 minutes 30 seconds West 5,173.61 feet to a point having Coordinates of X = 1,620,167.70 and Y = 600,208.82 and North 00 degrees 41 minutes 36 seconds East 5,168.36 feet to the point of beginning, containing approximately **362.825 acres**, all as more particularly outlined on a plat on file in the Office of Mineral Resources, Department of Natural Resources. All bearings, distances and coordinates are based on Louisiana Coordinate System of 1927, (North or South Zone), where applicable.

NOTE: The above description of the Tract nominated for lease has been provided and corrected, where required, exclusively by the nomination party. Any mineral lease selected from this Tract and awarded by the Louisiana State Mineral and Energy Board shall be without warranty of any kind, either express, implied, or statutory, including, but not limited to, the implied warranties of merchantability and fitness for a particular purpose. Should the mineral lease awarded by the Louisiana State Mineral and Energy Board be subsequently modified, cancelled or abrogated due to the existence of conflicting leases, operating agreements, private claims or other future obligations or conditions which may affect all or any portion of the leased Tract, it shall not relieve the Lessee of the obligation to pay any bonus due thereon to the Louisiana State Mineral and Energy Board, nor shall the Louisiana State Mineral and Energy Board be obligated to refund any consideration paid by the Lessor prior to such modification, cancellation, or abrogation, including, but not limited to, bonuses, rentals and royalties.

Applicant: THEOPHILUS OIL, GAS & LAND SERVICES, LLC

Bidder	Cash Payment	Price/Acre	Rental	Oil	Gas	Other

13070083
 Active_Leases
 Counties
 IMAGERY.DRG24001



TRACT 43330 - Red River Parish, Louisiana

All of the lands now or formerly constituting the beds and bottoms of all water bodies of every nature and description as to which title is vested in the State of Louisiana, together with all islands arising therein and other lands formed by accretion or by reliction, where allowed by law, excepting tax adjudicated lands, and not presently under mineral lease on July 10, 2013, situated in Red River Parish, Louisiana, and more particularly described as follows: Beginning at a point being the Northeast corner of State Lease No. 20801, also being the Southwest corner of State Lease No. 17366, as amended having Coordinates of X = 1,698,200.00 and Y = 504,087.00; thence East 1,200.00 feet along the South boundary of said State Lease No. 17366 to a point having Coordinates of X = 1,699,400.00 and Y = 504,087.00; thence South 1,200.00 feet to a point having Coordinates of X = 1,699,400.00 and Y = 502,887.00; thence West 1,199.77 feet to a point on the Eastern boundary of said State Lease No. 20801 having Coordinates of X = 1,698,200.23 and Y = 502,887.00; thence North 00 degrees 00 minutes 40 seconds West 1,200.00 feet along the East Boundary of said State Lease No. 20801 to the point of beginning, containing approximately **1 acre**, all as more particularly outlined on a plat on file in the Office of Mineral Resources, Department of Natural Resources. All bearings, distances and coordinates are based on Louisiana Coordinate System of 1927, (North or South Zone), where applicable.

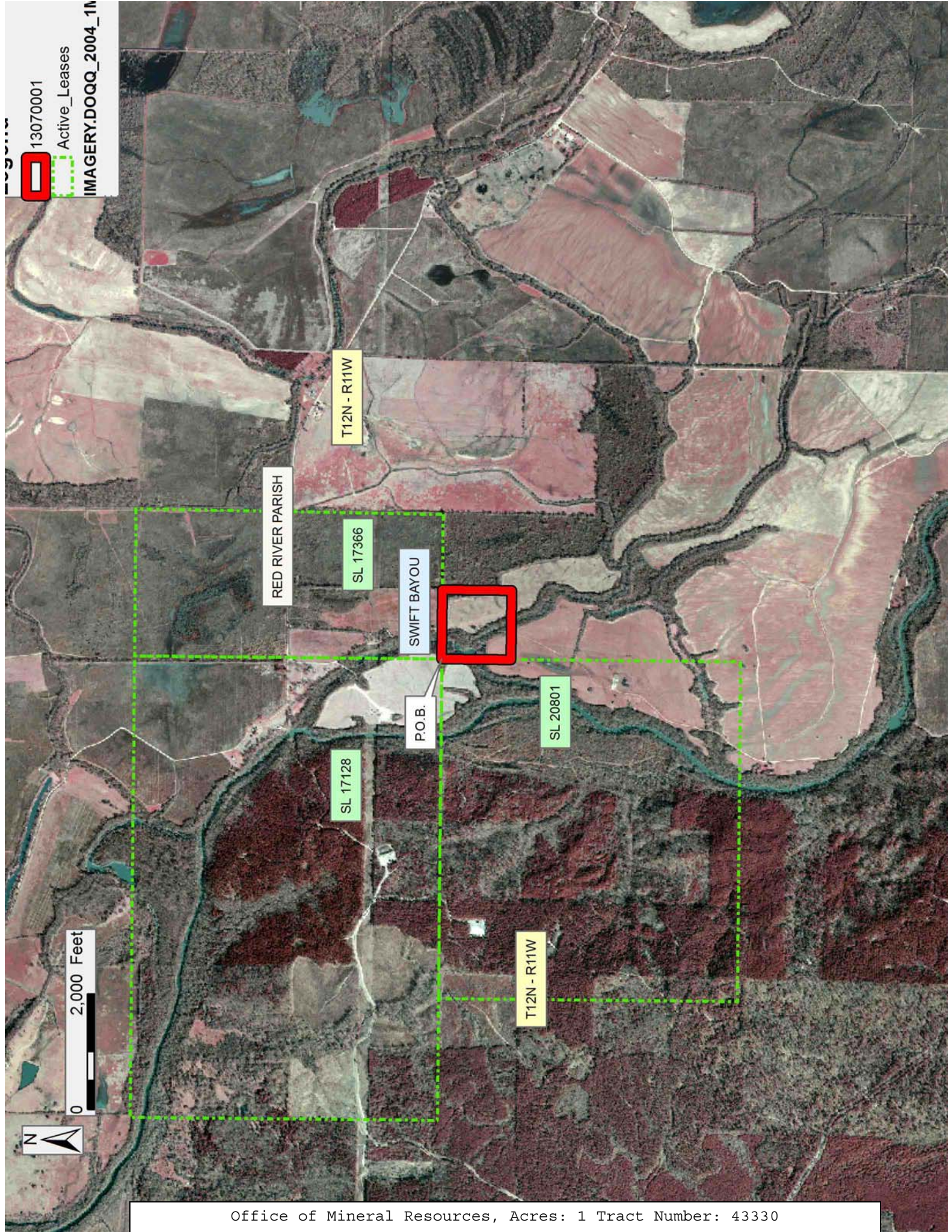
NOTE: The above description of the Tract nominated for lease has been provided and corrected, where required, exclusively by the nomination party. Any mineral lease selected from this Tract and awarded by the Louisiana State Mineral and Energy Board shall be without warranty of any kind, either express, implied, or statutory, including, but not limited to, the implied warranties of merchantability and fitness for a particular purpose. Should the mineral lease awarded by the Louisiana State Mineral and Energy Board be subsequently modified, cancelled or abrogated due to the existence of conflicting leases, operating agreements, private claims or other future obligations or conditions which may affect all or any portion of the leased Tract, it shall not relieve the Lessee of the obligation to pay any bonus due thereon to the Louisiana State Mineral and Energy Board, nor shall the Louisiana State Mineral and Energy Board be obligated to refund any consideration paid by the Lessor prior to such modification, cancellation, or abrogation, including, but not limited to, bonuses, rentals and royalties.

NOTE: The Office of Mineral Resources will require a minimum bonus of \$1950 per acre and a minimum royalty of 25%.

Applicant: STAFF OFFICE OF MINERAL RESOURCES

Bidder	Cash Payment	Price/Acre	Rental	Oil	Gas	Other

13070001
Active_Leases
IMAGERY.DOQQ_2004_1M



TRACT 43331 - Catahoula and Concordia Parishes, Louisiana

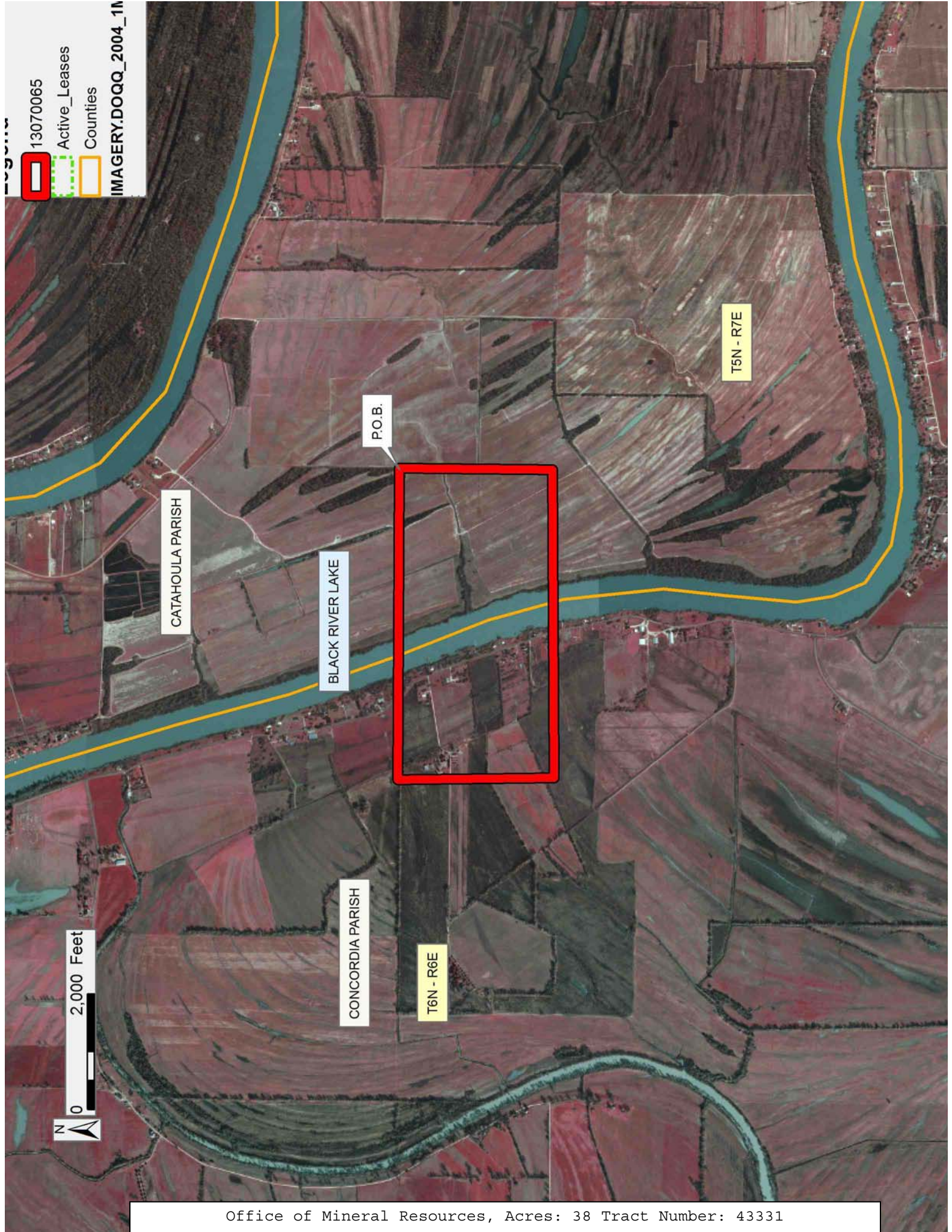
All of the lands now or formerly constituting the beds and bottoms of all water bodies of every nature and description as to which title is vested in the State of Louisiana, together with all islands arising therein and other lands formed by accretion or by reliction, where allowed by law, excepting tax adjudicated lands, and not presently under mineral lease on July 10, 2013, situated in Catahoula and Concordia Parishes, Louisiana, and more particularly described as follows: Beginning at a point having Coordinates of X = 2,217,381.42 and Y = 290,016.26; thence South 00 degrees 03 minutes 37 seconds East 2,654.44 feet to a point having Coordinates of X = 2,217,384.21 and Y = 287,361.82; thence South 89 degrees 05 minutes 34 seconds West 5,343.58 feet to a point having Coordinates of X = 2,212,041.30 and Y = 287,277.22; thence North 01 degrees 18 minutes 56 seconds West 2,709.58 feet to a point having Coordinates of X = 2,211,979.09 and Y = 289,986.08; thence North 89 degrees 40 minutes 48 seconds East 5,402.41 feet to the point of beginning, containing approximately **38 acres**, all as more particularly outlined on a plat on file in the Office of Mineral Resources, Department of Natural Resources. All bearings, distances and coordinates are based on Louisiana Coordinate System of 1927, (North or South Zone), where applicable.

NOTE: The above description of the Tract nominated for lease has been provided and corrected, where required, exclusively by the nomination party. Any mineral lease selected from this Tract and awarded by the Louisiana State Mineral and Energy Board shall be without warranty of any kind, either express, implied, or statutory, including, but not limited to, the implied warranties of merchantability and fitness for a particular purpose. Should the mineral lease awarded by the Louisiana State Mineral and Energy Board be subsequently modified, cancelled or abrogated due to the existence of conflicting leases, operating agreements, private claims or other future obligations or conditions which may affect all or any portion of the leased Tract, it shall not relieve the Lessee of the obligation to pay any bonus due thereon to the Louisiana State Mineral and Energy Board, nor shall the Louisiana State Mineral and Energy Board be obligated to refund any consideration paid by the Lessor prior to such modification, cancellation, or abrogation, including, but not limited to, bonuses, rentals and royalties.

Applicant: CYPRESS ENERGY CORPORATION

Bidder	Cash Payment	Price/Acre	Rental	Oil	Gas	Other

13070065
Active_Leases
Counties
IMAGERY.DOQQ_2004_1M



TRACT 43332 - Pointe Coupee Parish, Louisiana

All of the lands now or formerly constituting the beds and bottoms of all water bodies of every nature and description as to which title is vested in the State of Louisiana, together with all islands arising therein and other lands formed by accretion or by reliction, where allowed by law, excepting tax adjudicated lands, and not presently under mineral lease on July 10, 2013, situated in Pointe Coupee Parish, Louisiana, and more particularly described as follows: Beginning at a point having Coordinates of X = 1,881,376.00 and Y = 694,737.00; thence East 4,878.00 feet to a point having Coordinates of X = 1,886,254.00 and Y = 694,737.00; thence South 5,385.00 feet to a point having Coordinates of X = 1,886,254.00 and Y = 689,352.00; thence West 4,878.00 feet to a point having Coordinates of X = 1,881,376.00 and Y = 689,352.00; thence North 5,385.00 feet to the point of beginning, containing approximately **7 acres**, all as more particularly outlined on a plat on file in the Office of Mineral Resources, Department of Natural Resources. All bearings, distances and coordinates are based on Louisiana Coordinate System of 1927, (North or South Zone), where applicable.

NOTE: The above description of the Tract nominated for lease has been provided and corrected, where required, exclusively by the nomination party. Any mineral lease selected from this Tract and awarded by the Louisiana State Mineral and Energy Board shall be without warranty of any kind, either express, implied, or statutory, including, but not limited to, the implied warranties of merchantability and fitness for a particular purpose. Should the mineral lease awarded by the Louisiana State Mineral and Energy Board be subsequently modified, cancelled or abrogated due to the existence of conflicting leases, operating agreements, private claims or other future obligations or conditions which may affect all or any portion of the leased Tract, it shall not relieve the Lessee of the obligation to pay any bonus due thereon to the Louisiana State Mineral and Energy Board, nor shall the Louisiana State Mineral and Energy Board be obligated to refund any consideration paid by the Lessor prior to such modification, cancellation, or abrogation, including, but not limited to, bonuses, rentals and royalties.

Applicant: PATRICK L. DONOHUE PETROLEUM PROPERTIES, INC.

Bidder	Cash Payment	Price/Acre	Rental	Oil	Gas	Other

Legend

13070007



IMAGERY.DOQQ_2008_1M_CIR

POINTE COUPEE PARISH

T6S - R8E

BAYOU CLOSE

T6S - R7E

P.O.B.

0 2,000 Feet



TRACT 43333 - Plaquemines Parish, Louisiana

All of the lands now or formerly constituting the beds and bottoms of all water bodies of every nature and description as to which title is vested in the State of Louisiana, together with all islands arising therein and other lands formed by accretion or by reliction, where allowed by law, excepting tax adjudicated lands, and not presently under mineral lease on July 10, 2013, situated in Plaquemines Parish, Louisiana, and more particularly described as follows: A tract being described as Tract 2 of the MIO 9A RA SUC SAND UNIT, situated in Potash Field, Plaquemines Parish, Louisiana, said Unit Outline more particularly described as follows: Beginning at a point having Coordinates of X = 2,522,240.22 and Y = 297,323.83; thence North 38 degrees 33 minutes 20 seconds East 1555.19 feet; thence East 90.47 feet; thence North 87 degrees 03 minutes 52 seconds East 390.51 feet; thence South 29 degrees 68 minutes 54 seconds East 300.17 feet; thence South 28 degrees 18 minutes 03 seconds East 295.30 feet; thence South 25 degrees 42 minutes 36 seconds East 299.67 feet; thence South 29 degrees 14 minutes 56 seconds West 286.53 feet; thence South 45 degrees 00 minutes 00 seconds West 282.84 feet; thence South 53 degrees 44 minutes 46 seconds West 186.01 feet; thence South 58 degrees 34 minutes 14 seconds West 210.95 feet; thence South 64 degrees 39 minutes 13 seconds West 210.24 feet; thence South 76 degrees 45 minutes 34 seconds West 174.64 feet; thence South 89 degrees 32 minutes 35 seconds West 225.71 feet; thence North 80 degrees 58 minutes 38 seconds West 75.23 feet; thence North 67 degrees 37 minutes 12 seconds West 183.85 feet; thence North 54 degrees 41 minutes 20 seconds West 294.11 feet; thence North 51 degrees 20 minutes 25 seconds West 166.21 feet to the point of beginning, containing approximately **11.383 acres**, all as more particularly outlined on a plat on file in the Office of Mineral Resources, Department of Natural Resources. All bearings, distances and coordinates are based on Louisiana Coordinate System of 1927, (North or South Zone), where applicable.

NOTE: The above description of the Tract nominated for lease has been provided and corrected, where required, exclusively by the nomination party. Any mineral lease selected from this Tract and awarded by the Louisiana State Mineral and Energy Board shall be without warranty of any kind, either express, implied, or statutory, including, but not limited to, the implied warranties of merchantability and fitness for a particular purpose. Should the mineral lease awarded by the Louisiana State Mineral and Energy Board be subsequently modified, cancelled or abrogated due to the existence of conflicting leases, operating agreements, private claims or other future obligations or conditions which may affect all or any portion of the leased Tract, it shall not relieve the Lessee of the obligation to pay any bonus due thereon to the Louisiana State Mineral and Energy Board, nor shall the Louisiana State Mineral and Energy Board be obligated to refund any consideration paid by the Lessor prior to such modification, cancellation, or abrogation, including, but not limited to, bonuses, rentals and royalties.

NOTE: The State of Louisiana does hereby reserve, and this lease shall be subject to, the imprescriptible right of surface use in the nature of a servitude in favor of the Department of Natural Resources, including its Offices and Commissions, for the sole purpose of implementing, constructing, servicing and maintaining approved coastal zone management and/or restoration projects. Utilization of any and all rights derived under this lease by the mineral lessee, its agents, successors or assigns, shall not interfere with nor hinder the reasonable surface use by the Department of Natural Resources, its Offices or Commissions, as herein above reserved.

Applicant: CLASSIC PETROLEUM, INC.

Bidder	Cash Payment	Price/Acre	Rental	Oil	Gas	Other



PLAQUEMINES PARISH

MISSISSIPPI RIVER

P.O.B.

T19S - R27E

2,000 Feet



TRACT 43334 - Plaquemines Parish, Louisiana

All of the lands now or formerly constituting the beds and bottoms of all water bodies of every nature and description as to which title is vested in the State of Louisiana, together with all islands arising therein and other lands formed by accretion or by reliction, where allowed by law, excepting tax adjudicated lands, and not presently under mineral lease on July 10, 2013, situated in Plaquemines Parish, Louisiana, and more particularly described as follows: Beginning at a point having Coordinates of X = 2,518,169.16 and Y = 265,206.41; thence South 10,000.00 feet to a point having Coordinates of X = 2,518,169.16 and Y = 255,206.41; thence West 10,890.00 feet to a point having Coordinates of X = 2,507,279.16 and Y = 255,206.41; thence North 10,000.00 feet to a point having Coordinates of X = 2,507,279.16 and Y = 265,206.41; thence East 10,890.00 feet to the point of beginning, containing approximately **1,912 acres**, all as more particularly outlined on a plat on file in the Office of Mineral Resources, Department of Natural Resources. All bearings, distances and coordinates are based on Louisiana Coordinate System of 1927, (North or South Zone), where applicable.

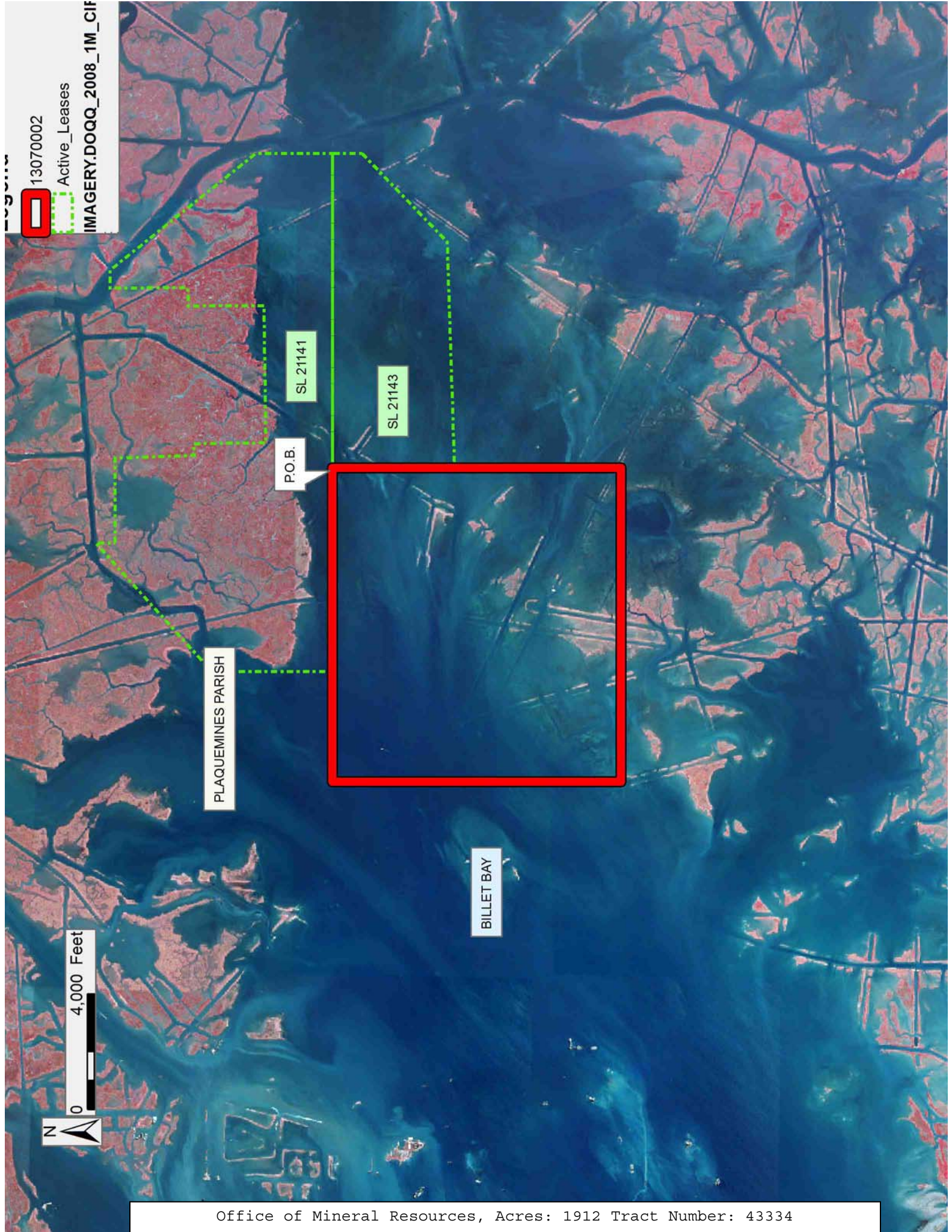
NOTE: The above description of the Tract nominated for lease has been provided and corrected, where required, exclusively by the nomination party. Any mineral lease selected from this Tract and awarded by the Louisiana State Mineral and Energy Board shall be without warranty of any kind, either express, implied, or statutory, including, but not limited to, the implied warranties of merchantability and fitness for a particular purpose. Should the mineral lease awarded by the Louisiana State Mineral and Energy Board be subsequently modified, cancelled or abrogated due to the existence of conflicting leases, operating agreements, private claims or other future obligations or conditions which may affect all or any portion of the leased Tract, it shall not relieve the Lessee of the obligation to pay any bonus due thereon to the Louisiana State Mineral and Energy Board, nor shall the Louisiana State Mineral and Energy Board be obligated to refund any consideration paid by the Lessor prior to such modification, cancellation, or abrogation, including, but not limited to, bonuses, rentals and royalties.

NOTE: The Office of Mineral Resources will require a minimum bonus of \$250 per acre and a minimum royalty of 22.5%.

NOTE: The State of Louisiana does hereby reserve, and this lease shall be subject to, the imprescriptible right of surface use in the nature of a servitude in favor of the Department of Natural Resources, including its Offices and Commissions, for the sole purpose of implementing, constructing, servicing and maintaining approved coastal zone management and/or restoration projects. Utilization of any and all rights derived under this lease by the mineral lessee, its agents, successors or assigns, shall not interfere with nor hinder the reasonable surface use by the Department of Natural Resources, its Offices or Commissions, as herein above reserved.

Applicant: STAFF OFFICE OF MINERAL RESOURCES

Bidder	Cash Payment	Price/Acre	Rental	Oil	Gas	Other



TRACT 43335 - Plaquemines Parish, Louisiana

All of the lands now or formerly constituting the beds and bottoms of all water bodies of every nature and description as to which title is vested in the State of Louisiana, together with all islands arising therein and other lands formed by accretion or by reliction, where allowed by law, excepting tax adjudicated lands, and not presently under mineral lease on July 10, 2013, situated in Plaquemines Parish, Louisiana, and more particularly described as follows: Beginning at a point having Coordinates of X = 2,507,279.16 and Y = 255,206.41; thence East 10,890.00 feet to a point having Coordinates of X = 2,518,169.16 and Y = 255,206.41; thence South 10,000.00 feet to a point having Coordinates of X = 2,518,169.16 and Y = 245,206.41; thence West 10,890.00 feet to a point having Coordinates of X = 2,507,279.16 and Y = 245,206.41; thence North 10,000.00 feet to the point of beginning, containing approximately **1,040 acres**, all as more particularly outlined on a plat on file in the Office of Mineral Resources, Department of Natural Resources. All bearings, distances and coordinates are based on Louisiana Coordinate System of 1927, (North or South Zone), where applicable.

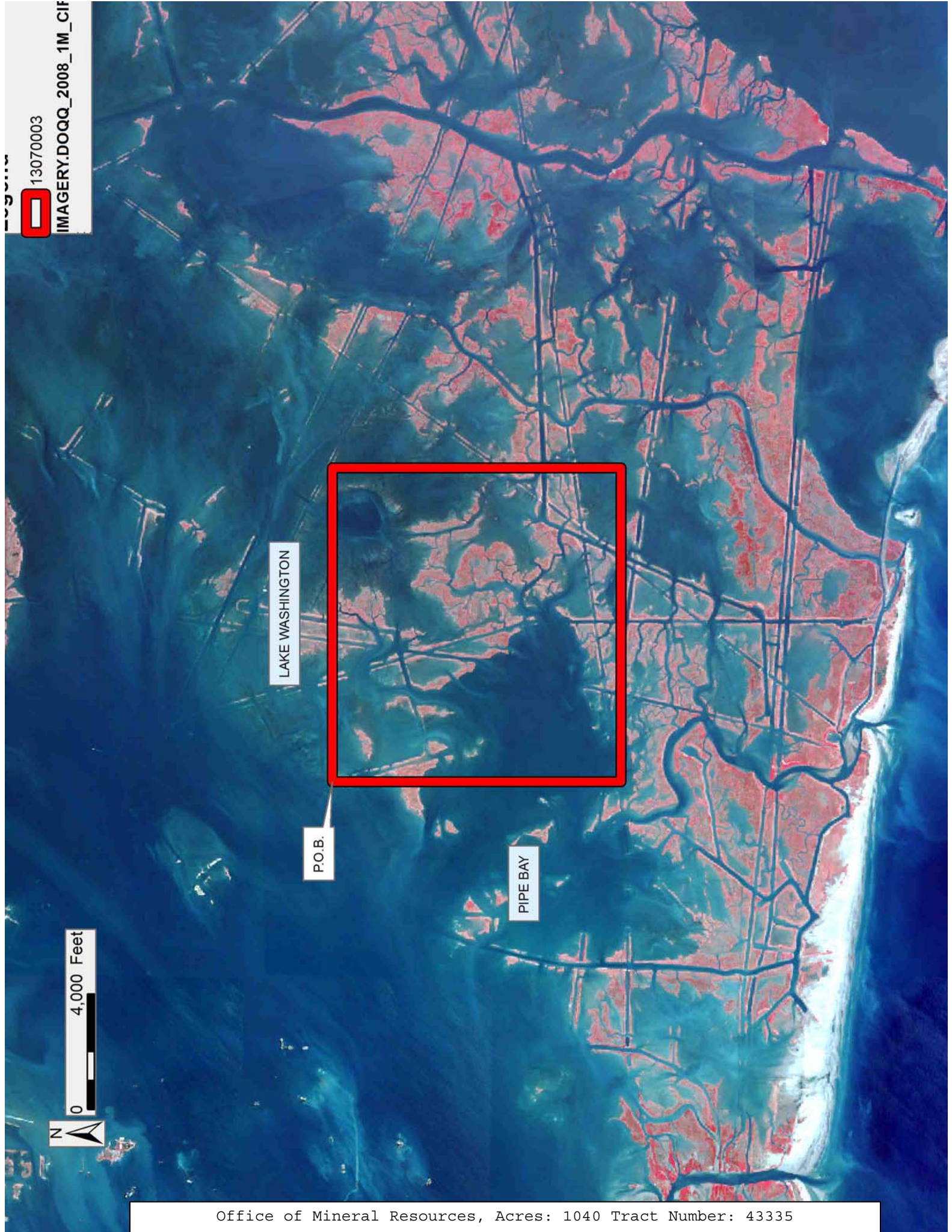
NOTE: The above description of the Tract nominated for lease has been provided and corrected, where required, exclusively by the nomination party. Any mineral lease selected from this Tract and awarded by the Louisiana State Mineral and Energy Board shall be without warranty of any kind, either express, implied, or statutory, including, but not limited to, the implied warranties of merchantability and fitness for a particular purpose. Should the mineral lease awarded by the Louisiana State Mineral and Energy Board be subsequently modified, cancelled or abrogated due to the existence of conflicting leases, operating agreements, private claims or other future obligations or conditions which may affect all or any portion of the leased Tract, it shall not relieve the Lessee of the obligation to pay any bonus due thereon to the Louisiana State Mineral and Energy Board, nor shall the Louisiana State Mineral and Energy Board be obligated to refund any consideration paid by the Lessor prior to such modification, cancellation, or abrogation, including, but not limited to, bonuses, rentals and royalties.

NOTE: The Office of Mineral Resources will require a minimum bonus of \$250 per acre and a minimum royalty of 22.5%.

NOTE: The State of Louisiana does hereby reserve, and this lease shall be subject to, the imprescriptible right of surface use in the nature of a servitude in favor of the Department of Natural Resources, including its Offices and Commissions, for the sole purpose of implementing, constructing, servicing and maintaining approved coastal zone management and/or restoration projects. Utilization of any and all rights derived under this lease by the mineral lessee, its agents, successors or assigns, shall not interfere with nor hinder the reasonable surface use by the Department of Natural Resources, its Offices or Commissions, as herein above reserved.

Applicant: STAFF OFFICE OF MINERAL RESOURCES

Bidder	Cash Payment	Price/Acre	Rental	Oil	Gas	Other



TRACT 43336 - Portion of Blocks 54, 84, and 85, Main Pass Area, Revised, Plaquemines Parish, Louisiana

All of the lands now or formerly constituting the beds and bottoms of all water bodies of every nature and description as to which title is vested in the State of Louisiana, together with all islands arising therein and other lands formed by accretion or by reliction, where allowed by law, excepting tax adjudicated lands, and not presently under mineral lease on July 10, 2013, situated in Plaquemines Parish, Louisiana, and more particularly described as follows: Beginning at a point having Coordinates of X = 2,683,077.31 and Y = 237,201.53; thence North 12,470.77 feet to a point having Coordinates of X = 2,683,077.31 and Y = 249,672.30; thence East 6,752.00 feet to a point on the Louisiana Coastline, as decreed by the Supreme Court of the United States, as determined by a Special Master appointed therein, in litigation styled *United States v. State of Louisiana et al No. 9 Original*, in 1975, having Coordinates of X = 2,689,829.31 and Y = 249,672.30; thence Southeasterly on a straight line along said Louisiana Coastline to the Northeast corner of State Lease No. 20548 having Coordinates of X = 2,691,983.47 and Y = 246,703.02; thence along the boundary of said State Lease No. 20548 the following courses and distances: North 89 degrees 41 minutes 09 seconds West 907.48 feet, South 00 degrees 13 minutes 33 seconds East 2,536.02 feet, South 44 degrees 48 minutes 41 seconds East 1,504.02 feet, South 30 degrees 36 minutes 24 seconds West 1,954.26 feet, South 43 degrees 23 minutes 24 seconds West 329.98 feet, North 88 degrees 23 minutes 38 seconds East 420.85 feet, South 41 degrees 06 minutes 11 seconds East 1,300.55 feet, South 68 degrees 14 minutes 18 seconds West 1,899.27 feet, South 43 degrees 28 minutes 06 seconds East 1,321.19 feet and North 56 degrees 20 minutes 03 seconds East 5,307.53 feet to its Southeast corner having Coordinates of X = 2,695,762.37 and Y = 241,494.22; thence Southeasterly on a straight line along said Louisiana Coastline to a point having Coordinates of X = 2,698,876.65 and Y = 237,201.53; thence West 15,799.34 feet to the point of beginning, (This lease includes only waterbottoms claimed and owned by the state and specifically excludes any land which the state may claim or own and to which the mineral rights are vested in the state), containing approximately **1,780 acres**, all as more particularly outlined on a plat on file in the Office of Mineral Resources, Department of Natural Resources. All bearings, distances and coordinates are based on Louisiana Coordinate System of 1927, (North or South Zone), where applicable.

NOTE: The above description of the Tract nominated for lease has been provided and corrected, where required, exclusively by the nomination party. Any mineral lease selected from this Tract and awarded by the Louisiana State Mineral and Energy Board shall be without warranty of any kind, either express, implied, or statutory, including, but not limited to, the implied warranties of merchantability and fitness for a particular purpose. Should the mineral lease awarded by the Louisiana State Mineral and Energy Board be subsequently modified, cancelled or abrogated due to the existence of conflicting leases, operating agreements, private claims or other future obligations or conditions which may affect all or any

portion of the leased Tract, it shall not relieve the Lessee of the obligation to pay any bonus due thereon to the Louisiana State Mineral and Energy Board, nor shall the Louisiana State Mineral and Energy Board be obligated to refund any consideration paid by the Lessor prior to such modification, cancellation, or abrogation, including, but not limited to, bonuses, rentals and royalties.

NOTE: The State of Louisiana does hereby reserve, and this lease shall be subject to, the imprescriptible right of surface use in the nature of a servitude in favor of the Department of Natural Resources, including its Offices and Commissions, for the sole purpose of implementing, constructing, servicing and maintaining approved coastal zone management and/or restoration projects. Utilization of any and all rights derived under this lease by the mineral lessee, its agents, successors or assigns, shall not interfere with nor hinder the reasonable surface use by the Department of Natural Resources, its Offices or Commissions, as herein above reserved.

NOTE: This tract is located in an area designated by the Louisiana Legislature or the Wildlife and Fisheries Commission as a Public Oyster Seed Ground, Reservation, or area of Calcasieu or Sabine Lake. Proposed projects occurring in these areas will be evaluated on a case by case basis by Louisiana Department of Wildlife & Fisheries. Modifications to proposed project features including, but not limited to, access routes, well sites, flowlines, and appurtenant structures maybe required by the Louisiana Department of Wildlife and Fisheries. In addition, compensatory mitigation will be required to offset unavoidable habitat impacts.

Applicant: WOODLAND PETROLEUM CORPORATION

Bidder	Cash Payment	Price/Acre	Rental	Oil	Gas	Other

Legend

13070008



Blocks



Active_Leases

IMAGERY.DOQQ_2008_1M_CIR

GULF OF MEXICO

PLAQUEMINES PARISH

MAIN PASS AREA, REVISED

MP0054

MP0066

MP0084

SL 20538

SL 20548

P.O.B.

MP0085

T20S - R19E



TRACT 43337 - Portion of Blocks 120, 121, and 122, South Timbalier Area, Revised, Terrebonne Parish, Louisiana

All of the lands now or formerly constituting the beds and bottoms of all water bodies of every nature and description as to which title is vested in the State of Louisiana, together with all islands arising therein and other lands formed by accretion or by reliction, where allowed by law, excepting tax adjudicated lands, and not presently under mineral lease on July 10, 2013, situated in Terrebonne Parish, Louisiana, and more particularly described as follows: Beginning at a point having Coordinates of X = 2,237,721.53 and Y = 159,243.00; thence East 9,011.47 feet to the Southwest corner of State Lease No. 20632 having Coordinates of X = 2,246,733.00 and Y = 159,243.00; thence continue East 5,664.13 feet along the South boundary of said State Lease No. 20632 to its Southeast corner and a point on the West boundary of State Lease No. 2857, as amended having Coordinates of X = 2,252,397.13 and Y = 159,243.00; thence along the boundaries of said State Lease No. 2857 the following courses: South 03 degrees 48 minutes 50 seconds East 343.77 feet to a point having Coordinates of X = 2,252,420.00 and Y = 158,899.99, South 08 degrees 44 minutes 46 seconds East 328.82 feet to a point having Coordinates of X = 2,252,470.00 and Y = 158,574.99, South 13 degrees 41 minutes 33 seconds East 1,415.22 feet to a point having Coordinates of X = 2,252,805.00 and Y = 157,199.99, South 17 degrees 42 minutes 12 seconds East 1,857.99 feet to a point having Coordinates of X = 2,253,370.00 and Y = 155,429.99, South 20 degrees 20 minutes 38 seconds East 949.21 feet to a point having Coordinates of X = 2,253,699.99 and Y = 154,539.99 and South 15 degrees 47 minutes 37 seconds East 396.98 feet to its southern tip and a point on the West boundary of State Lease No. 1249, as amended having Coordinates of X = 2,253,808.04 and Y = 154,157.99; thence along the boundaries of said State Lease No. 1249 the following courses: South 119.58 feet to a point having Coordinates of X = 2,253,808.04 and Y = 154,038.42, East 20.42 feet to a point having Coordinates of X = 2,253,828.46 and Y = 154,038.42 and South 09 degrees 41 minutes 15 seconds East 810.35 feet to a point of intersection with the Louisiana Coastline, as decreed by the Supreme Court of the United States, as determined by a Special Master appointed therein, in litigation styled *United States v. State of Louisiana et al No. 9 Original*, in 1975, having Coordinates of X = 2,253,964.83 and Y = 153,239.62; thence along the boundaries of said Coastline the following: Northwesterly on a straight line to a point having Coordinates of X = 2,253,306 and Y = 154,102 and Southwesterly on a straight line to a point having Coordinates of X = 2,237,721.53 and Y = 150,298.44; thence North 8,944.56 feet to the point of beginning, containing approximately **2,490.52 acres**, all as more particularly outlined on a plat on file in the Office of Mineral Resources, Department of Natural Resources. All bearings, distances and coordinates are based on Louisiana Coordinate System of 1927, (North or South Zone), where applicable.

NOTE: The above description of the Tract nominated for lease has been provided and corrected, where required, exclusively by the nomination party. Any mineral lease selected from this Tract and awarded by the

Louisiana State Mineral and Energy Board shall be without warranty of any kind, either express, implied, or statutory, including, but not limited to, the implied warranties of merchantability and fitness for a particular purpose. Should the mineral lease awarded by the Louisiana State Mineral and Energy Board be subsequently modified, cancelled or abrogated due to the existence of conflicting leases, operating agreements, private claims or other future obligations or conditions which may affect all or any portion of the leased Tract, it shall not relieve the Lessee of the obligation to pay any bonus due thereon to the Louisiana State Mineral and Energy Board, nor shall the Louisiana State Mineral and Energy Board be obligated to refund any consideration paid by the Lessor prior to such modification, cancellation, or abrogation, including, but not limited to, bonuses, rentals and royalties.

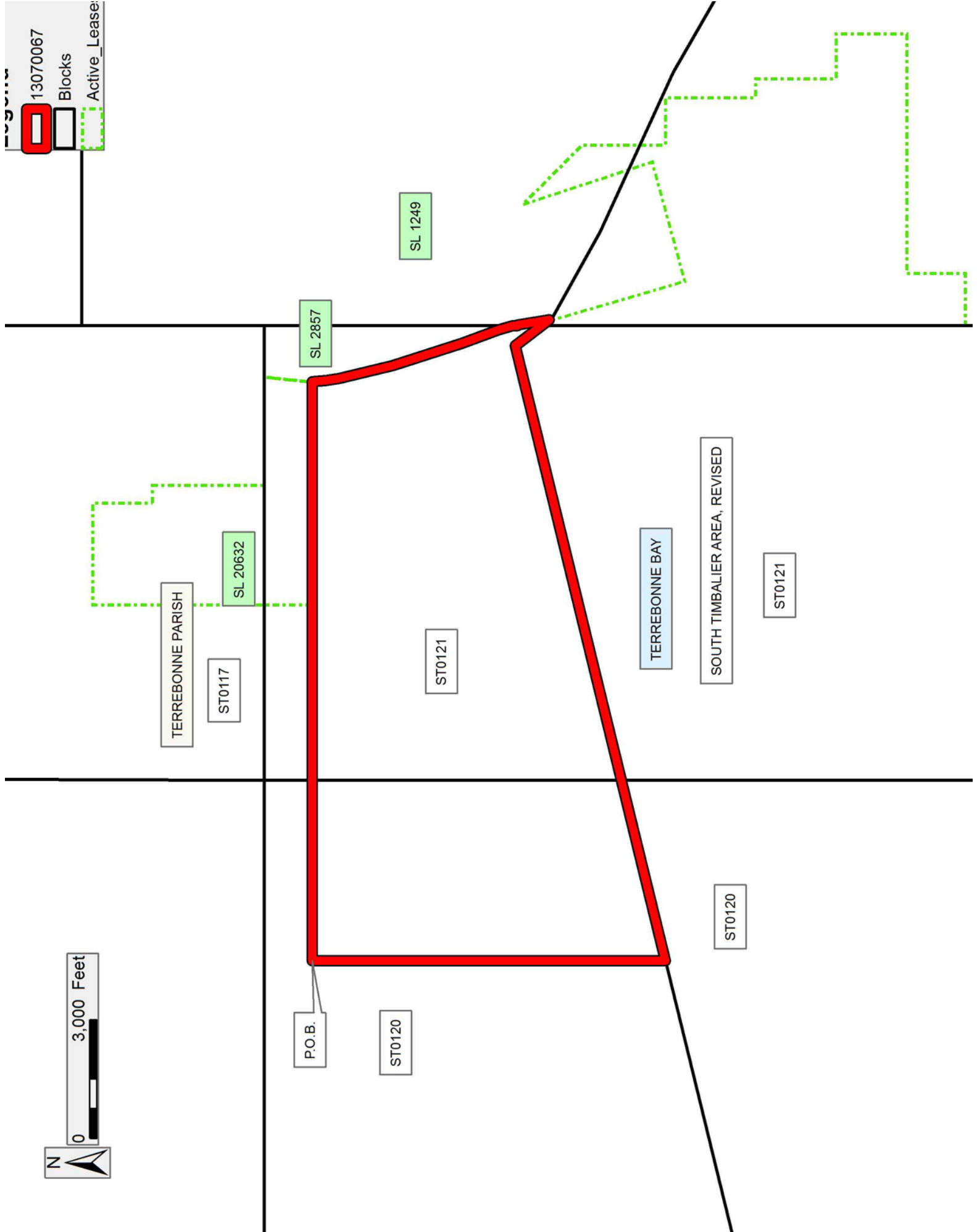
NOTE: The State of Louisiana does hereby reserve, and this lease shall be subject to, the imprescriptible right of surface use in the nature of a servitude in favor of the Department of Natural Resources, including its Offices and Commissions, for the sole purpose of implementing, constructing, servicing and maintaining approved coastal zone management and/or restoration projects. Utilization of any and all rights derived under this lease by the mineral lessee, its agents, successors or assigns, shall not interfere with nor hinder the reasonable surface use by the Department of Natural Resources, its Offices or Commissions, as herein above reserved.

NOTE: It appears, according to our records, that a portion of this Tract is located within the restrictive safety fairway area as set out by the Corps of Engineers, U.S. Army and/or the restrictive anchorage area as set out by the U.S. Coast Guard.

Applicant: CYPRESS ENERGY CORPORATION

Bidder	Cash Payment	Price/Acre	Rental	Oil	Gas	Other

13070067
 Blocks
 Active_Lease:



TRACT 43338 - Portion of Block 122, South Timbalier Area, Revised, Terrebonne Parish, Louisiana

All of the lands now or formerly constituting the beds and bottoms of all water bodies of every nature and description as to which title is vested in the State of Louisiana, together with all islands arising therein and other lands formed by accretion or by reliction, where allowed by law, excepting tax adjudicated lands, and not presently under mineral lease on July 10, 2013, situated in Terrebonne Parish, Louisiana, and more particularly described as follows: Beginning at a point on the boundary of State Lease No. 1249, as amended, having Coordinates of X = 2,256,880.21 and Y = 153,910.81; thence along the boundary of said State Lease No. 1249 the following courses: South 45 degrees 00 minutes 00 seconds East 2,129.54 feet to a point having Coordinates of X = 2,258,386.02 and Y = 152,405.00 and South 1,458.02 feet to a point on the Louisiana Coastline, as decreed by the Supreme Court of the United States, as determined by a Special Master appointed therein, in litigation styled *United States v. State of Louisiana et al No. 9 Original*, in 1975, having Coordinates of X = 2,258,386.02 and Y = 150,946.98; thence Northwesterly on a straight line along said Louisiana Coastline to a point on the boundary of said State Lease No. 1249 having Coordinates of X = 2,257,763.82 and Y = 151,230.16; thence North 18 degrees 14 minutes 36 seconds West 2,822.52 feet along the boundary of said State Lease No. 1249 to the point of beginning, containing approximately **41.47 acres**, all as more particularly outlined on a plat on file in the Office of Mineral Resources, Department of Natural Resources. All bearings, distances and coordinates are based on Louisiana Coordinate System of 1927, (North or South Zone), where applicable.

NOTE: The above description of the Tract nominated for lease has been provided and corrected, where required, exclusively by the nomination party. Any mineral lease selected from this Tract and awarded by the Louisiana State Mineral and Energy Board shall be without warranty of any kind, either express, implied, or statutory, including, but not limited to, the implied warranties of merchantability and fitness for a particular purpose. Should the mineral lease awarded by the Louisiana State Mineral and Energy Board be subsequently modified, cancelled or abrogated due to the existence of conflicting leases, operating agreements, private claims or other future obligations or conditions which may affect all or any portion of the leased Tract, it shall not relieve the Lessee of the obligation to pay any bonus due thereon to the Louisiana State Mineral and Energy Board, nor shall the Louisiana State Mineral and Energy Board be obligated to refund any consideration paid by the Lessor prior to such modification, cancellation, or abrogation, including, but not limited to, bonuses, rentals and royalties.




NOTE: The State of Louisiana does hereby reserve, and this lease shall be subject to, the imprescriptible right of surface use in the nature of a servitude in favor of the Department of Natural Resources, including its Offices and Commissions, for the sole purpose of implementing,

constructing, servicing and maintaining approved coastal zone management and/or restoration projects. Utilization of any and all rights derived under this lease by the mineral lessee, its agents, successors or assigns, shall not interfere with nor hinder the reasonable surface use by the Department of Natural Resources, its Offices or Commissions, as herein above reserved.

Applicant: CYPRESS ENERGY CORPORATION

Bidder	Cash Payment	Price/Acre	Rental	Oil	Gas	Other

Legend

-  13070068
-  Blocks
-  Active_Lease

