

TRACT 43339 - Terrebonne Parish, Louisiana

All of the lands now or formerly constituting the beds and bottoms of all water bodies of every nature and description as to which title is vested in the State of Louisiana, together with all islands arising therein and other lands formed by accretion or by reliction, where allowed by law, excepting tax adjudicated lands, and not presently under mineral lease on July 10, 2013, situated in Terrebonne Parish, Louisiana, and more particularly described as follows: Beginning at a point on the East boundary of State Lease No. 301, as amended and the Southwest corner of Tract Ala of State Lease No. 188, as amended having Coordinates of X = 2,273,819.16 and Y = 153,458.16; thence along the boundaries of said Tract Ala of State Lease No. 188 the following courses: East 3,786.33 feet to a point having Coordinates of X = 2,277,605.50 and Y = 153,458.16 and South 1,590.00 feet to a point having Coordinates of X = 2,277,605.50 and Y = 151,868.16; thence South 9,449.51 feet to a point on the Louisiana Coastline, as decreed by the Supreme Court of the United States, as determined by a Special Master appointed therein, in litigation styled *United States v. State of Louisiana et al No. 9 Original*, in 1975, having Coordinates of X = 2,277,605.50 and Y = 142,418.65; thence along the said Coastline the following: Northwesterly on a straight line to a point having Coordinates of X = 2,274,749 and Y = 143,161, Northwesterly on a straight line to a point having Coordinates of X = 2,270,205 and Y = 145,091, Northwesterly on a straight line to a point having Coordinates of X = 2,264,450 and Y = 147,674 and Northwesterly on a straight line to a point of intersection with the East boundary of State Lease No. 1249, as amended having Coordinates of X = 2,264,446.02 and Y = 147,676.30; thence North 1,913.02 feet along the East boundary of said State Lease No. 1249 to a point of intersection with the South boundary of said State Lease No. 301; thence along the boundaries of said State Lease No. 301 the following courses: Easterly, Southeasterly and Northerly to the Southwest corner of Tract Alc of State Lease No. 188 having Coordinates of X = 2,273,875.04 and Y = 145,768.52; thence along the boundaries of said Tract Alc of State Lease No. 188 the following courses: along an arc to the left having a center of X = 2,276,861.00 and Y = 161,325.00 and a radius of 15,840 feet to a point having Coordinates of X = 2,275,075.04 and Y = 145,585.57, North 3,120.00 feet to a point having Coordinates of X = 2,275,075.04 and Y = 148,705.57 and West 1,221.34 feet to its Northwest corner and a point on the East boundary of said State Lease No. 301 having Coordinates of X = 2,273,853.70 and Y = 148,705.57; thence along the boundaries of said State Lease No. 301 the following courses: West 1,000.16 feet to a point having Coordinates of X = 2,272,853.54 and Y = 148,705.57, South 89 degrees 25 minutes 39 seconds West 1,918.64 feet to a point having Coordinates of X = 2,270,935.00 and Y = 148,686.40, North 00 degrees 09 minutes 45 seconds East 951.70 feet to a point having Coordinates of X = 2,270,937.70 and Y = 149,638.10, West 3,574.50 feet to a point having Coordinates of X = 2,267,363.20 and Y = 149,638.10, South 576.00 feet to a point having Coordinates of X = 2,267,363.20 and Y = 149,062.10, North 85 degrees 49 minutes 23 seconds West 1,611.78 feet to a point having Coordinates of X = 2,265,755.70 and Y = 149,179.50, North 2,189.60 feet to a point having

Coordinates of X = 2,265,755.70 and Y = 151,369.10, North 89 degrees 57 minutes 22 seconds East 1,175.10 feet to a point having Coordinates of X = 2,266,930.80 and Y = 151,370.00, North 00 degrees 10 minutes 30 seconds West 425.40 feet to a point having Coordinates of X = 2,266,929.50 and Y = 151,795.40, South 89 degrees 58 minutes 57 seconds East 5,924.04 feet to a point having Coordinates of X = 2,272,853.54 and Y = 151,793.59, North 1,194.16 feet to a point having Coordinates of X = 2,272,853.54 and Y = 152,987.75, East 969.05 feet to a point having Coordinates of X = 2,273,822.59 and Y = 152,987.75 and North 00 degrees 25 minutes 04 seconds West 470.42 feet to the beginning, containing approximately **1,515 acres**, all as more particularly outlined on a plat on file in the Office of Mineral Resources, Department of Natural Resources. All bearings, distances and coordinates are based on Louisiana Coordinate System of 1927, (North or South Zone), where applicable.

NOTE: The above description of the Tract nominated for lease has been provided and corrected, where required, exclusively by the nomination party. Any mineral lease selected from this Tract and awarded by the Louisiana State Mineral and Energy Board shall be without warranty of any kind, either express, implied, or statutory, including, but not limited to, the implied warranties of merchantability and fitness for a particular purpose. Should the mineral lease awarded by the Louisiana State Mineral and Energy Board be subsequently modified, cancelled or abrogated due to the existence of conflicting leases, operating agreements, private claims or other future obligations or conditions which may affect all or any portion of the leased Tract, it shall not relieve the Lessee of the obligation to pay any bonus due thereon to the Louisiana State Mineral and Energy Board, nor shall the Louisiana State Mineral and Energy Board be obligated to refund any consideration paid by the Lessor prior to such modification, cancellation, or abrogation, including, but not limited to, bonuses, rentals and royalties.

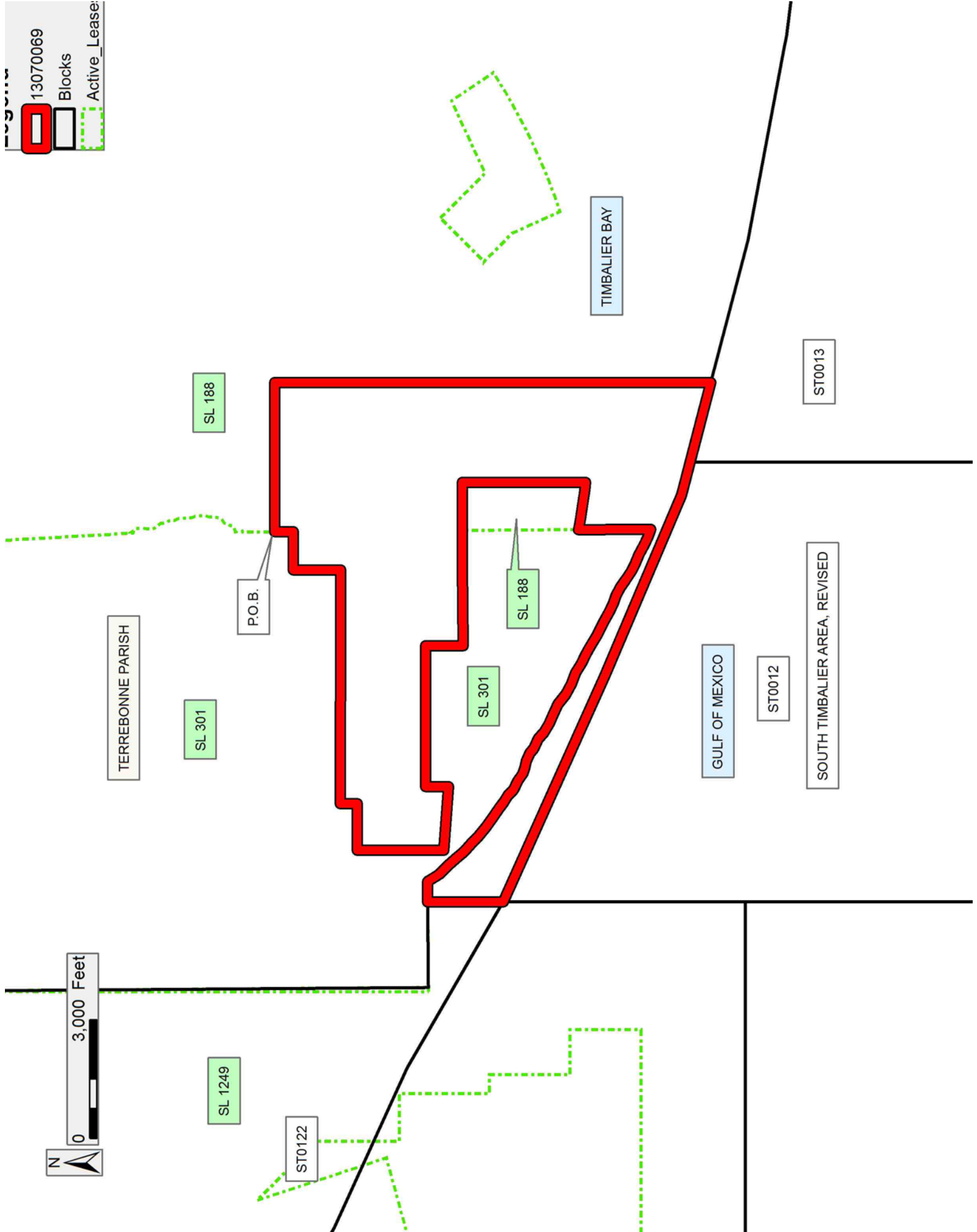
NOTE: The State of Louisiana does hereby reserve, and this lease shall be subject to, the imprescriptible right of surface use in the nature of a servitude in favor of the Department of Natural Resources, including its Offices and Commissions, for the sole purpose of implementing, constructing, servicing and maintaining approved coastal zone management and/or restoration projects. Utilization of any and all rights derived under this lease by the mineral lessee, its agents, successors or assigns, shall not interfere with nor hinder the reasonable surface use by the Department of Natural Resources, its Offices or Commissions, as herein above reserved.

Applicant: CYPRESS ENERGY CORPORATION

Bidder	Cash Payment	Price/Acre	Rental	Oil	Gas	Other

Legend

- 13070069
- Blocks
- Active_Lease



TRACT 43340 - Terrebonne Parish, Louisiana

All of the lands now or formerly constituting the beds and bottoms of all water bodies of every nature and description as to which title is vested in the State of Louisiana, together with all islands arising therein and other lands formed by accretion or by reliction, where allowed by law, excepting tax adjudicated lands, and not presently under mineral lease on July 10, 2013, situated in Terrebonne Parish, Louisiana, and more particularly described as follows: Beginning at a point on the South boundary of Tract A1a of State Lease No. 188, as amended having Coordinates of X = 2,277,605.50 and Y = 151,868.16; thence along the boundaries of said Tract A1a of State Lease No. 188 the following courses: East 2,940.00 feet to a point having Coordinates of X = 2,280,545.50 and Y = 151,868.16, South 180.00 feet to a point having Coordinates of X = 2,280,545.50 and Y = 151,688.16, East 1,620.00 feet to a point having Coordinates of X = 2,282,165.50 and Y = 151,688.16, North 45 degrees 00 minutes 00 seconds East 810.00 feet to a point having Coordinates of X = 2,282,738.26 and Y = 152,260.92, South 63 degrees 11 minutes 59 seconds East 2,992.63 feet to a point having Coordinates of X = 2,285,409.43 and Y = 150,911.60 and South 31 degrees 49 minutes 16 seconds East 1,684.91 feet to a point having Coordinates of X = 2,286,297.83 and Y = 149,479.94; thence South 00 degrees 07 minutes 41 seconds East 3,086.57 feet to a point having Coordinates of X = 2,286,304.73 and Y = 146,393.38; thence South 00 degrees 20 minutes 04 seconds West 3,247.13 feet to a point having Coordinates of X = 2,286,285.77 and Y = 143,146.31; thence South 2,625.29 feet to a point on the Louisiana Coastline, as decreed by the Supreme Court of the United States, as determined by a Special Master appointed therein, in litigation styled *United States v. State of Louisiana et al No. 9 Original*, in 1975, and a point on the North boundary of State Lease No. 17729 having Coordinates of X = 2,286,285.77 and Y = 140,521.02; thence the boundaries of said Coastline and said State Lease No. 17729 the following courses: Northwesterly on a straight line to the Northwest corner of said State Lease No. 17729 having Coordinates of X = 2,285,950.00 and Y = 140,584.62, Northwesterly on a straight line to a point having Coordinates of X = 2,281,202 and Y = 141,484 and Northwesterly on a straight line to a point having Coordinates of X = 2,277,605.50 and Y = 142,418.65; thence North 9,449.51 feet to the point of beginning, **LESS AND EXCEPT** all that portion of State Lease No. 188 Tract A1b, as amended and State Lease No. 2703 Tract 1, as amended which lie entirely within the above described tract, being more fully described as follows: Commencing at a point being the point of beginning of the above described nominated tract having coordinates of X = 2,277,605.50 and Y = 151,868.16; thence South 39 degrees 32 minutes 27 seconds East 4,807.43 feet to a point being the point of beginning of said State Lease No. 188 Tract A1b having Coordinates of X = 2,280,666.04 and Y = 148,160.81; thence along the boundaries of said Tract A1b of State Lease No. 188 the following courses: thence North 45 degrees 00 minutes 00 seconds East 1,561.86 feet to a point having Coordinates of X = 2,281,770.44 and Y = 149,265.21; thence South 45 degrees 00 minutes 00 seconds East 1,600.00 feet to a point having Coordinates of X =

2,282,901.82 and Y = 148,133.84; thence North 65 degrees 10 minutes 43 seconds East 2,026.01 feet to a point having Coordinates of X = 2,284,740.66 and Y = 148,984.34; thence South 34 degrees 00 minutes 42 seconds East 1,198.69 feet to a point having Coordinates of X = 2,285,411.16 and Y = 147,990.72; thence along an arc to the right having a center of X = 2,276,861.00 and Y = 161,325.00 and a radius of 15,840 feet to a point of intersection with the Northern boundary of said Tract 1 of State Lease No. 2703; thence along the boundaries of said Tract 1 of State Lease No. 2703 the following courses: Southeasterly, Southerly, Westerly, Northerly, and Northeasterly to a point of intersection with the South boundary of said Tract Alb of State Lease No. 188; thence along an arc to the right having a center of X = 2,276,861.00 and Y = 161,325.00 and a radius of 15,840 feet to a point having Coordinates of X = 2,281,902.25 and Y = 146,308.39; thence North 24 degrees 22 minutes 46 seconds West 1,237.25 feet to a point having Coordinates of X = 2,281,391.54 and Y = 147,435.31; thence North 45 degrees 00 minutes 00 seconds West 1,026.01 feet to the point of beginning, (This tract includes only waterbottoms claimed and owned by the state and specifically excludes any land which the state may claim or own and to which the mineral rights are vested in the state), containing approximately **1,490 acres**, all as more particularly outlined on a plat on file in the Office of Mineral Resources, Department of Natural Resources. All bearings, distances and coordinates are based on Louisiana Coordinate System of 1927, (North or South Zone), where applicable.

NOTE: The above description of the Tract nominated for lease has been provided and corrected, where required, exclusively by the nomination party. Any mineral lease selected from this Tract and awarded by the Louisiana State Mineral and Energy Board shall be without warranty of any kind, either express, implied, or statutory, including, but not limited to, the implied warranties of merchantability and fitness for a particular purpose. Should the mineral lease awarded by the Louisiana State Mineral and Energy Board be subsequently modified, cancelled or abrogated due to the existence of conflicting leases, operating agreements, private claims or other future obligations or conditions which may affect all or any portion of the leased Tract, it shall not relieve the Lessee of the obligation to pay any bonus due thereon to the Louisiana State Mineral and Energy Board, nor shall the Louisiana State Mineral and Energy Board be obligated to refund any consideration paid by the Lessor prior to such modification, cancellation, or abrogation, including, but not limited to, bonuses, rentals and royalties.

NOTE: The State of Louisiana does hereby reserve, and this lease shall be subject to, the imprescriptible right of surface use in the nature of a servitude in favor of the Department of Natural Resources, including its Offices and Commissions, for the sole purpose of implementing, constructing, servicing and maintaining approved coastal zone management and/or restoration projects. Utilization of any and all rights derived under this lease by the mineral lessee, its agents, successors or assigns,

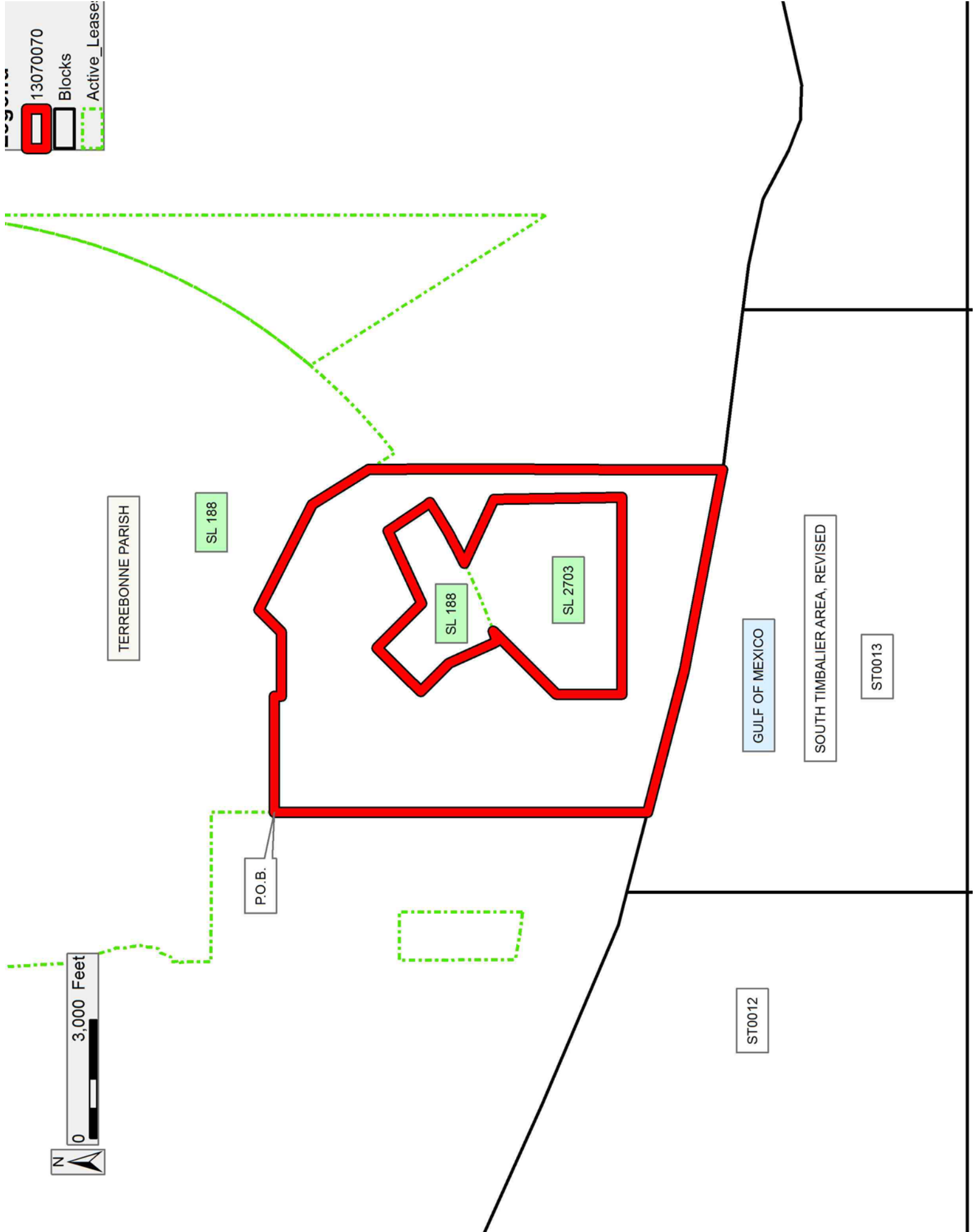
shall not interfere with nor hinder the reasonable surface use by the Department of Natural Resources, its Offices or Commissions, as herein above reserved.

Applicant: CYPRESS ENERGY CORPORATION

Bidder	Cash Payment	Price/Acre	Rental	Oil	Gas	Other

Legend

- 13070070
- Blocks
- Active_Lease



TRACT 43341 - Lafourche and Terrebonne Parishes, Louisiana

All of the lands now or formerly constituting the beds and bottoms of all water bodies of every nature and description as to which title is vested in the State of Louisiana, together with all islands arising therein and other lands formed by accretion or by reliction, where allowed by law, excepting tax adjudicated lands, and not presently under mineral lease on July 10, 2013, situated in Lafourche and Terrebonne Parishes, Louisiana, and more particularly described as follows: Beginning at a point on the South boundary of Tract Ala of State Lease No. 188, as amended having Coordinates of X = 2,286,666.93 and Y = 148,885.13; thence along an arc to the left having a center of X = 2,276,861.00 and Y = 161,325.00 and a radius of 15,840 feet to a point of intersection with West boundary of Tract 2 of State Lease No. 2703, as amended; thence Southeasterly approximately 7,077 feet along the West boundary of said Tract 2 of State Lease No. 2703 to a point of intersection with the West boundary of State Lease No. 2826, as amended; thence along the boundaries of said State Lease No. 2826 the following courses: Southerly approximately 261 feet and Easterly approximately 4,747 feet to a point having Coordinates of X = 2,297,482.10 and Y = 144,766.62; thence South 5,927.89 feet to a point on the Louisiana Coastline, as decreed by the Supreme Court of the United States, as determined by a Special Master appointed therein, in litigation styled *United States v. State of Louisiana et al No. 9 Original*, in 1975, having Coordinates of X = 2,297,482.10 and Y = 138,838.73; thence along the boundaries of said Coastline the following: Southwesterly on a straight line to a point having Coordinates of X = 2,296,041 and Y = 138,519, Northwesterly on a straight line to a point having Coordinates of X = 2,295,144 and Y = 138,550, Northwesterly on a straight line to a point having Coordinates of X = 2,294,383 and Y = 138,846, Northwesterly on a straight line to a point having Coordinates of X = 2,293,148 and Y = 139,498, Northwesterly on a straight line to a point having Coordinates of X = 2,291,503 and Y = 139,861, Northwesterly on a straight line to the Northeast corner of State Lease No. 17729 having Coordinates of X = 2,288,800.00 and Y = 140,199.07, Northwesterly on a straight line and along the North boundary of said State Lease No. 17729 to a point having Coordinates of X = 2,286,402 and Y = 140,499 and Northwesterly on a straight line and along the North boundary of said State Lease No. 17729 to a point having Coordinates of X = 2,286,285.77 and Y = 140,521.02; thence North 2,625.29 feet to a point having Coordinates of X = 2,286,285.77 and Y = 143,146.31; thence North 00 degrees 20 minutes 04 seconds East 3,247.13 feet to a point having Coordinates of X = 2,286,304.73 and Y = 146,393.38; thence North 00 degrees 07 minutes 41 seconds West 3,086.57 feet to a point on the South boundary of Tract Ala of State Lease No. 188 having Coordinates of X = 2,286,297.83 and Y = 149,479.94, thence South 31 degrees 49 minutes 16 seconds East 700.02 feet to the beginning, **LESS AND EXCEPT** any portion of State Lease Nos. 188, 2703, and 2826 that may lie within the above described tract, containing approximately **1,911 acres**, all as more particularly outlined on a plat on file in the Office of Mineral Resources, Department of Natural Resources.

All bearings, distances and coordinates are based on Louisiana Coordinate System of 1927, (North or South Zone), where applicable.

NOTE: The above description of the Tract nominated for lease has been provided and corrected, where required, exclusively by the nomination party. Any mineral lease selected from this Tract and awarded by the Louisiana State Mineral and Energy Board shall be without warranty of any kind, either express, implied, or statutory, including, but not limited to, the implied warranties of merchantability and fitness for a particular purpose. Should the mineral lease awarded by the Louisiana State Mineral and Energy Board be subsequently modified, cancelled or abrogated due to the existence of conflicting leases, operating agreements, private claims or other future obligations or conditions which may affect all or any portion of the leased Tract, it shall not relieve the Lessee of the obligation to pay any bonus due thereon to the Louisiana State Mineral and Energy Board, nor shall the Louisiana State Mineral and Energy Board be obligated to refund any consideration paid by the Lessor prior to such modification, cancellation, or abrogation, including, but not limited to, bonuses, rentals and royalties.

NOTE: The State of Louisiana does hereby reserve, and this lease shall be subject to, the imprescriptible right of surface use in the nature of a servitude in favor of the Department of Natural Resources, including its Offices and Commissions, for the sole purpose of implementing, constructing, servicing and maintaining approved coastal zone management and/or restoration projects. Utilization of any and all rights derived under this lease by the mineral lessee, its agents, successors or assigns, shall not interfere with nor hinder the reasonable surface use by the Department of Natural Resources, its Offices or Commissions, as herein above reserved.

Applicant: CYPRESS ENERGY CORPORATION

Bidder	Cash Payment	Price/Acre	Rental	Oil	Gas	Other

Legend

- 13070071 (Red outline)
- Blocks (Black outline)
- Active_Lease (Green dashed outline)

0 3,000 Feet

TERREBONNE PARISH

