

**TRACT 43356 - St. Mary Parish, Louisiana**

A portion of all lands located above the mean high water mark, together with lands now or formerly constituting the beds and bottoms of any water body of whatever description or nature belonging to the State of Louisiana which is now located within the boundaries of the Atchafalaya Delta Wildlife Management Area and not presently under mineral lease by the State of Louisiana on July 10, 2013, and more particularly located as follows: Beginning at a point within the Atchafalaya Delta Wildlife Management Area having Coordinates of X = 1,946,762.00 and Y = 285,129.85; thence South 3,566.83 feet to the Northwest corner of State Lease No. 20525 having Coordinates of X = 1,946,762.00 and Y = 281,563.02; thence West 3,902.00 feet to a point having Coordinates of X = 1,942,860.00 and Y = 281,563.02; thence South 5,363.02 feet to a point having Coordinates of X = 1,942,860.00 and Y = 276,200.00; thence West 2,230.00 feet to a point having Coordinates of X = 1,940,630.00 and Y = 276,200.00; thence South 4,320.00 feet to a point having Coordinates of X = 1,940,630.00 and Y = 271,880.00; thence West 3,368.15 feet to a point on the East boundary of State Lease No. 340, as amended, having Coordinates of X = 1,937,261.85 and Y = 271,880.00; thence along the boundaries of said State Lease No. 340 the following courses: North 00 degrees 08 minutes 00 seconds East 5,664.02 feet to a point having Coordinates of X = 1,937,275.03 and Y = 277,544.00, West 4,027.03 feet to a point having Coordinates of X = 1,933,248.00 and Y = 277,544.00 and North 7,585.85 feet to a point having Coordinates of X = 1,933,248.00 and Y = 285,129.85; thence East 13,514.00 feet to the point of beginning, containing approximately 2,499.31 acres, all as more particularly outlined on a plat on file in the Office of Mineral Resources, Department of Natural Resources. All bearings, distances and coordinates are based on Louisiana Coordinate System of 1927, (South Zone).

NOTE: The above description of the Tract nominated for lease has been provided and corrected, where required, exclusively by the nomination party. Any mineral lease selected from this Tract and awarded by the Louisiana State Mineral and Energy Board shall be without warranty of any kind, either express, implied, or statutory, including, but not limited to, the implied warranties of merchantability and fitness for a particular purpose. Should the mineral lease awarded by the Louisiana State Mineral and Energy Board be subsequently modified, cancelled or abrogated due to the existence of conflicting leases, operating agreements, private claims or other future obligations or conditions which may affect all or any portion of the leased Tract, it shall not relieve the Lessee of the obligation to pay any bonus due thereon to the Louisiana State Mineral and Energy Board, nor shall the Louisiana State Mineral and Energy Board be obligated to refund any consideration paid by the Lessor prior to such modification, cancellation, or abrogation, including, but not limited to, bonuses, rentals and royalties.

NOTE: The mineral lease is located in the Atchafalaya Delta WMA under the jurisdiction of the Louisiana Department of Wildlife and Fisheries which has promulgated rules and regulations for the protection of game and

wildlife on the aforesaid Tract and, therefore, shall be subject to said rules and regulations, a copy of which shall be attached to the mineral leases. In addition to the specific rules and regulations applicable, the following shall apply regarding operations under this mineral lease:

- No activities will be allowed without written authorization of the Louisiana Department of Wildlife and Fisheries.
- Proposed projects will be evaluated on a case by case basis. Modifications to proposed project features including but not limited to access routes, spoil placement, well sites, flowlines and appurtenant structures may be required by the Department of Wildlife and Fisheries.
- Compliance with the Atchafalaya Delta WMA regulations will be required unless otherwise specified by the Department of Wildlife and Fisheries.
- Compensatory mitigation will be required to offset unavoidable wetland impacts.
- Compensation and/or oyster seed ground surveys may be required by the Department for potential impacts to productive oyster seed grounds located within the management area.
- Removal of all structures, facilities and equipment will be required within 120 days of abandonment unless otherwise agreed to in writing by the Louisiana Department of Wildlife and Fisheries.
- No activities will be allowed during the hunting season unless approved by the Department.
- This tract is located within the emerging Atchafalaya Delta. No activities will be allowed on emergent islands, sub aerial mudflats or vegetated wetlands. Drilling will be restricted to passes and open water bays. The Louisiana Department of Wildlife and Fisheries (LDWF) shall have discretion to determine access routes. In the event that LDWF approves of dredging for access LDWF shall have discretion to require hydraulic or spray dredging.
- Prior to submitting application for wetland permits to Federal and State permitting agencies the leaseholder shall coordinate project details with the Department of Wildlife and Fisheries. Contact person for the Department will be Mike Windham at (504)284-5268.

Additionally, the Department will require a minimum bonus of \$350.00 per acre and a minimum royalty of 25%.

NOTE: The above described tract may be in the vicinity of existing shell reefs where drilling and dredging operations must be conducted in strict conformity with the regulations adopted by the Louisiana Department of Wildlife and Fisheries and/or the U.S. Corps of Engineers, U.S. Army.

NOTE: The State of Louisiana does hereby reserve, and this lease shall be subject to, the imprescriptible right of surface use in the nature of a servitude in favor of the Department of Natural Resources, including its Offices and Commissions, for the sole purpose of implementing, constructing, servicing and maintaining approved coastal zone management and/or restoration projects. Utilization of any and all rights derived under this lease by the mineral lessee, its agents, successors or assigns, shall not interfere with nor hinder the reasonable surface use by the Department of Natural Resources, its Offices or Commissions, as herein above reserved.

NOTE: This tract is located in an area designated by the Louisiana Legislature or the Wildlife and Fisheries Commission as a Public Oyster Seed Ground, Reservation, or area of Calcasieu or Sabine Lake. Proposed projects occurring in these areas will be evaluated on a case by case basis by Louisiana Department of Wildlife & Fisheries. Modifications to proposed project features including, but not limited to, access routes, well sites, flowlines, and appurtenant structures maybe required by the Louisiana Department of Wildlife and Fisheries. In addition, compensatory mitigation will be required to offset unavoidable habitat impacts.

Applicant: LESLIE M. COOPER

Bidder	Cash Payment	Price/Acre	Rental	Oil	Gas	Other

**Legend**

13070053

Wildlife

Blocks

Active\_Leases



ST MARY PARISH

ATCHAFALAYA DELTA WMA

P.O.B.

SL 20525

EI0013

0 3,000 Feet

SL 340

EI0400

EI0401

ATCHAFALAYA BAY

EUGENE ISLAND AREA, REVISED



**TRACT 43357 - St. Mary and Terrebonne Parishes, Louisiana**

A portion of all lands located above the mean high water mark, together with lands now or formerly constituting the beds and bottoms of any water body of whatever description or nature belonging to the State of Louisiana which is now located within the boundaries of the Atchafalaya Delta Wildlife Management Area and not presently under mineral lease by the State of Louisiana on July 10, 2013, and more particularly located as follows: Beginning at a point having Coordinates of X = 2,027,128.00 and Y = 270,129.00; thence North approximately 12,455 feet to a point of intersection with the Eastern boundary of the Atchafalaya Delta Wildlife Management Area having a Coordinate of X = 2,027,128.00; thence Southeasterly and Southerly approximately 21,185 feet along the meanders of said Atchafalaya Delta Wildlife Management Area to a point of intersection with the Northern boundary of State Lease No. 2077, as amended; thence along the boundary of said State Lease No. 2077 the following courses: North 73 degrees 26 minutes 35 seconds West 391.76 feet, North 83 degrees 12 minutes 40 seconds West 422.97 feet, North 75 degrees 57 minutes 50 seconds West 206.16 feet, North 86 degrees 38 minutes 01 seconds West 170.28 feet, North 40 degrees 25 minutes 34 seconds West 354.68 feet, North 64 degrees 39 minutes 14 seconds West 210.24 feet, North 81 degrees 28 minutes 09 seconds West 202.24 feet, South 65 degrees 25 minutes 58 seconds West 192.42 feet, South 42 degrees 36 minutes 51 seconds West 169.85 feet, South 23 degrees 01 minutes 32 seconds West 217.31 feet, North 11 degrees 32 minutes 48 seconds West 949.21 feet, North 27 degrees 24 minutes 27 seconds West 152.07 feet, North 35 degrees 32 minutes 16 seconds West 129.03 feet, North 66 degrees 36 minutes 53 seconds West 201.56 feet, North 88 degrees 05 minutes 27 seconds West 150.08 feet, South 60 degrees 01 minutes 06 seconds West 150.08 feet, South 30 degrees 37 minutes 07 seconds West 284.69 feet, South 21 degrees 04 minutes 30 seconds West 1,098.48 feet, and South 27 degrees 42 minutes 21 seconds West 356.91 feet to a point having a Coordinate of Y = 270,129.00; thence West 6,501.06 feet to the point of beginning, **LESS AND EXCEPT** any right, title, and interest owned by and not under lease from the State of Louisiana, on behalf of the St. Mary Parish School Board, situated in Section 16, Township 19 South, Range 12 East, St. Mary Parish, Louisiana, contained within the above described tract, **LESS AND EXCEPT** that portion, if any, of State Lease No. 2077, that may lie within the above described tract and **LESS AND EXCEPT** that portion, if any, of the above described tract that may lie outside of the Atchafalaya Delta Wildlife Management Area, containing approximately **2,432 acres**, all as more particularly outlined on a plat on file in the Office of Mineral Resources, Department of Natural Resources. All bearings, distances and coordinates are based on Louisiana Coordinate System of 1927, (South Zone).

NOTE: The above description of the Tract nominated for lease has been provided and corrected, where required, exclusively by the nomination party. Any mineral lease selected from this Tract and awarded by the Louisiana State Mineral and Energy Board shall be without warranty of any

kind, either express, implied, or statutory, including, but not limited to, the implied warranties of merchantability and fitness for a particular purpose. Should the mineral lease awarded by the Louisiana State Mineral and Energy Board be subsequently modified, cancelled or abrogated due to the existence of conflicting leases, operating agreements, private claims or other future obligations or conditions which may affect all or any portion of the leased Tract, it shall not relieve the Lessee of the obligation to pay any bonus due thereon to the Louisiana State Mineral and Energy Board, nor shall the Louisiana State Mineral and Energy Board be obligated to refund any consideration paid by the Lessor prior to such modification, cancellation, or abrogation, including, but not limited to, bonuses, rentals and royalties.

NOTE: The mineral lease is located in the Atchafalaya Delta WMA under the jurisdiction of the Louisiana Department of Wildlife and Fisheries which has promulgated rules and regulations for the protection of game and wildlife on the aforesaid Tract and, therefore, shall be subject to said rules and regulations, a copy of which shall be attached to the mineral leases. In addition to the specific rules and regulations applicable, the following shall apply regarding operations under this mineral lease:

- No activities will be allowed without written authorization of the Louisiana Department of Wildlife and Fisheries.
- Proposed projects will be evaluated on a case by case basis. Modifications to proposed project features including but not limited to access routes, spoil placement, well sites, flowlines and appurtenant structures may be required by the Department of Wildlife and Fisheries.
- Compliance with the Atchafalaya Delta WMA regulations will be required unless otherwise specified by the Department of Wildlife and Fisheries.
- Compensatory mitigation will be required to offset unavoidable wetland impacts.
- Compensation and/or oyster seed ground surveys may be required by the Department for potential impacts to productive oyster seed grounds located within the management area.
- Removal of all structures, facilities and equipment will be required within 120 days of abandonment unless otherwise agreed to in writing by the Louisiana Department of Wildlife and Fisheries.
- No activities will be allowed during the hunting season unless approved by the Department.
- This tract is located within the emerging Atchafalaya Delta. No activities will be allowed on emergent islands, sub aerial mudflats or vegetated wetlands. Drilling will be restricted to passes and open water bays. The Louisiana Department of Wildlife and Fisheries (LDWF) shall have discretion to determine access routes. In the event that LDWF approves of dredging for access LDWF shall have discretion to require hydraulic or spray dredging.

- Prior to submitting application for wetland permits to Federal and State permitting agencies the leaseholder shall coordinate project details with the Department of Wildlife and Fisheries. Contact person for the Department will be Mike Windham at (504)284-5268.

Additionally, the Department will require a minimum bonus of \$350.00 per acre and a minimum royalty of 25%.

NOTE: The State of Louisiana does hereby reserve, and this lease shall be subject to, the imprescriptible right of surface use in the nature of a servitude in favor of the Department of Natural Resources, including its Offices and Commissions, for the sole purpose of implementing, constructing, servicing and maintaining approved coastal zone management and/or restoration projects. Utilization of any and all rights derived under this lease by the mineral lessee, its agents, successors or assigns, shall not interfere with nor hinder the reasonable surface use by the Department of Natural Resources, its Offices or Commissions, as herein above reserved.

NOTE: This tract is located in an area designated by the Louisiana Legislature or the Wildlife and Fisheries Commission as a Public Oyster Seed Ground, Reservation, or area of Calcasieu or Sabine Lake. Proposed projects occurring in these areas will be evaluated on a case by case basis by Louisiana Department of Wildlife & Fisheries. Modifications to proposed project features including, but not limited to, access routes, well sites, flowlines, and appurtenant structures maybe required by the Louisiana Department of Wildlife and Fisheries. In addition, compensatory mitigation will be required to offset unavoidable habitat impacts.

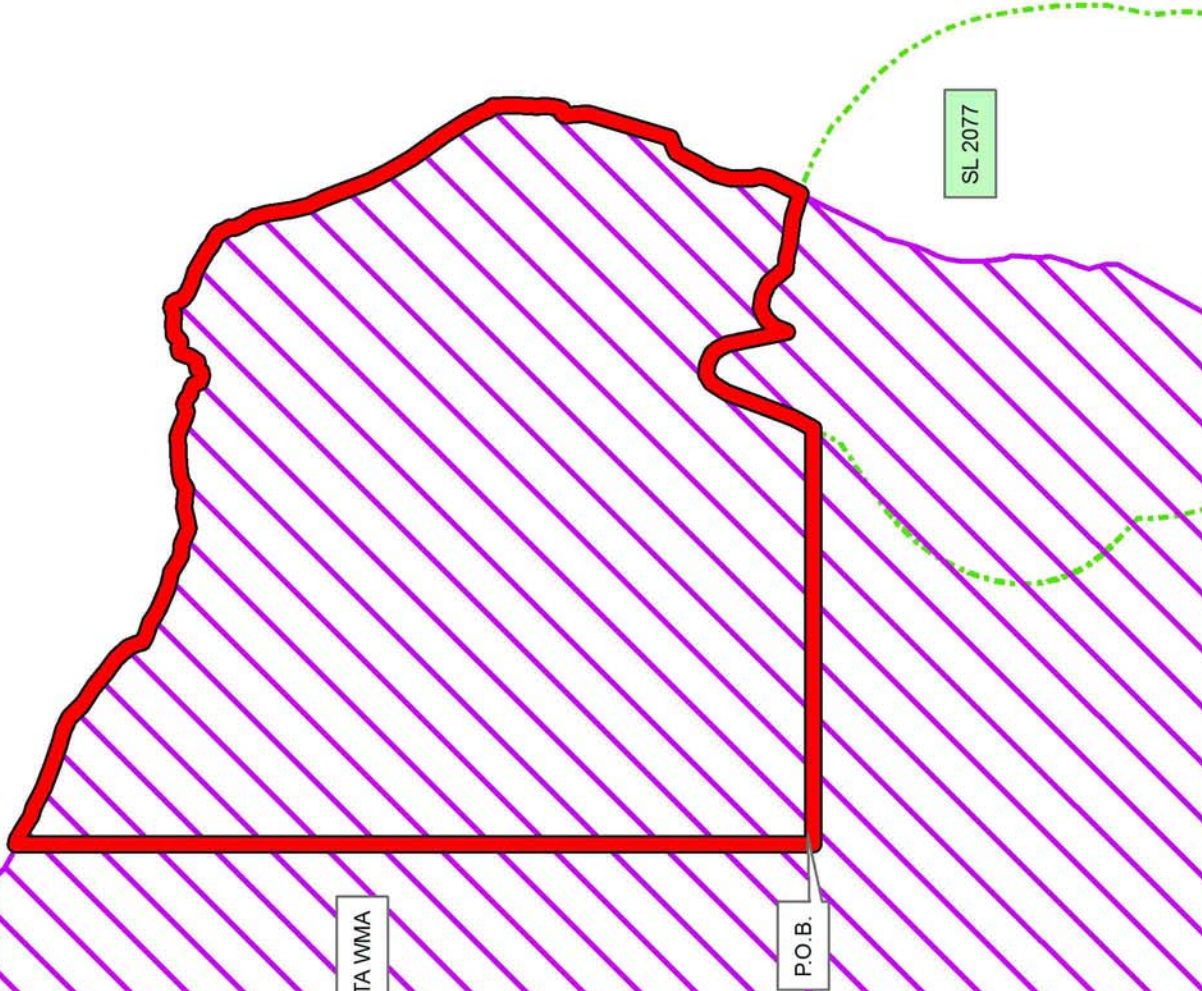
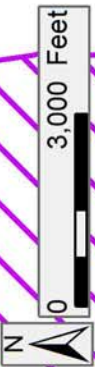
Applicant: LESLIE M. COOPER

Bidder	Cash Payment	Price/Acre	Rental	Oil	Gas	Other

**Legend**

- 13070021
- Wildlife
- Active\_Leases

TERREBONNE PARISH



ATCHAFALAYA DELTA WMA

ATCHAFALAYA BAY

P.O.B.



**TRACT 43358 - St. Mary Parish, Louisiana**

A portion of all lands located above the mean high water mark, together with lands now or formerly constituting the beds and bottoms of any water body of whatever description or nature belonging to the State of Louisiana which is now located within the boundaries of the Atchafalaya Delta Wildlife Management Area and not presently under mineral lease by the State of Louisiana on July 10, 2013, and more particularly located as follows: Beginning at a point within the Atchafalaya Delta Wildlife Management Area having Coordinates of X = 1,942,860.00 and Y = 281,563.02; thence East 3,902.00 feet to the Northwest corner of State Lease No. 20525 having Coordinates of X = 1,946,762.00 and Y = 281,563.02; thence along the boundary of said State Lease No. 20525 the following courses: South 4,905.21 feet and East 5,316.80 feet to its Southeast corner having Coordinates of X = 1,952,078.80 and Y = 276,657.81; thence South 1,241.18 feet to a point on the boundary of State Lease No. 20367 having Coordinates of X = 1,952,078.80 and Y = 275,416.63; thence South 59 degrees 51 minutes 40 seconds West 1,825.60 feet along the boundary of said State Lease No. 20367 to its Westernmost corner, also being the Northeast corner of State Lease No. 20368 having Coordinates of X = 1,950,500.00 and Y = 274,500.00; thence South 59 degrees 51 minutes 40 seconds West 666.51 feet along the boundary of said State Lease No. 20368 to the Northernmost Northeast corner of State Lease No. 20529 having Coordinates of X = 1,949,923.60 and Y = 274,165.35; thence along the boundary of said State Lease No. 20529 the following courses: North 74 degrees 30 minutes 55 seconds West 1,337.34 feet, South 75 degrees 05 minutes 25 seconds West 890.66 feet and South 34 degrees 38 minutes 15 seconds West 1,780.71 feet to its Westernmost Northwest corner, also being the Northernmost corner of State Lease No. 20530 having Coordinates of X = 1,946,762.00 and Y = 272,828.12; thence along the boundary of said State Lease No. 20530 the following courses: South 34 degrees 38 minutes 15 seconds West 2,584.02 feet and South 17 degrees 23 minutes 50 seconds West 2,359.48 feet to the Northeast corner of State Lease No. 21053 having Coordinates of X = 1,944,587.82 and Y = 268,450.53; thence along the boundary of said State Lease No. 21053 the following courses: South 72 degrees 17 minutes 54 seconds West 3,127.95 feet to a point having Coordinates of X = 1,941,607.97 and Y = 267,499.45 and South 89 degrees 39 minutes 48 seconds West 4,356.45 feet to its Northwest corner, also being a point on the East boundary of State Lease No. 340, as amended, having Coordinates of X = 1,937,251.59 and Y = 267,473.86; thence North 00 degrees 08 minutes 00 seconds East 4,406.16 feet along the boundary of said State Lease No. 340 to a point having Coordinates of X = 1,937,261.85 and Y = 271,880.00; thence East 3,368.15 feet to a point having Coordinates of X = 1,940,630.00 and Y = 271,880.00; thence North 4,320.00 feet to a point having Coordinates of X = 1,940,630.00 and Y = 276,200.00; thence East 2,230.00 feet to a point having Coordinates of X = 1,942,860.00 and Y = 276,200.00; thence North 5,363.02 feet to the point of beginning, containing approximately **2,112.95 acres**, all as

more particularly outlined on a plat on file in the Office of Mineral Resources, Department of Natural Resources. All bearings, distances and coordinates are based on Louisiana Coordinate System of 1927, (South Zone).

NOTE: The above description of the Tract nominated for lease has been provided and corrected, where required, exclusively by the nomination party. Any mineral lease selected from this Tract and awarded by the Louisiana State Mineral and Energy Board shall be without warranty of any kind, either express, implied, or statutory, including, but not limited to, the implied warranties of merchantability and fitness for a particular purpose. Should the mineral lease awarded by the Louisiana State Mineral and Energy Board be subsequently modified, cancelled or abrogated due to the existence of conflicting leases, operating agreements, private claims or other future obligations or conditions which may affect all or any portion of the leased Tract, it shall not relieve the Lessee of the obligation to pay any bonus due thereon to the Louisiana State Mineral and Energy Board, nor shall the Louisiana State Mineral and Energy Board be obligated to refund any consideration paid by the Lessor prior to such modification, cancellation, or abrogation, including, but not limited to, bonuses, rentals and royalties.

NOTE: The mineral lease is located in the Atchafalaya Delta WMA under the jurisdiction of the Louisiana Department of Wildlife and Fisheries which has promulgated rules and regulations for the protection of game and wildlife on the aforesaid Tract and, therefore, shall be subject to said rules and regulations, a copy of which shall be attached to the mineral leases. In addition to the specific rules and regulations applicable, the following shall apply regarding operations under this mineral lease:

- No activities will be allowed without written authorization of the Louisiana Department of Wildlife and Fisheries.
- Proposed projects will be evaluated on a case by case basis. Modifications to proposed project features including but not limited to access routes, spoil placement, well sites, flowlines and appurtenant structures may be required by the Department of Wildlife and Fisheries.
- Compliance with the Atchafalaya Delta WMA regulations will be required unless otherwise specified by the Department of Wildlife and Fisheries.
- Compensatory mitigation will be required to offset unavoidable wetland impacts.
- Compensation and/or oyster seed ground surveys may be required by the Department for potential impacts to productive oyster seed grounds located within the management area.
- Removal of all structures, facilities and equipment will be required within 120 days of abandonment unless otherwise agreed to in writing by the Louisiana Department of Wildlife and Fisheries.

- No activities will be allowed during the hunting season unless approved by the Department.
- This tract is located within the emerging Atchafalaya Delta. No activities will be allowed on emergent islands, sub aerial mudflats or vegetated wetlands. Drilling will be restricted to passes and open water bays. The Louisiana Department of Wildlife and Fisheries (LDWF) shall have discretion to determine access routes. In the event that LDWF approves of dredging for access LDWF shall have discretion to require hydraulic or spray dredging.
- Prior to submitting application for wetland permits to Federal and State permitting agencies the leaseholder shall coordinate project details with the Department of Wildlife and Fisheries. Contact person for the Department will be Mike Windham at (504)284-5268.

Additionally, the Department will require a minimum bonus of \$350.00 per acre and a minimum royalty of 25%.

NOTE: The above described tract may be in the vicinity of existing shell reefs where drilling and dredging operations must be conducted in strict conformity with the regulations adopted by the Louisiana Department of Wildlife and Fisheries and/or the U.S. Corps of Engineers, U.S. Army.

NOTE: The State of Louisiana does hereby reserve, and this lease shall be subject to, the imprescriptible right of surface use in the nature of a servitude in favor of the Department of Natural Resources, including its Offices and Commissions, for the sole purpose of implementing, constructing, servicing and maintaining approved coastal zone management and/or restoration projects. Utilization of any and all rights derived under this lease by the mineral lessee, its agents, successors or assigns, shall not interfere with nor hinder the reasonable surface use by the Department of Natural Resources, its Offices or Commissions, as herein above reserved.

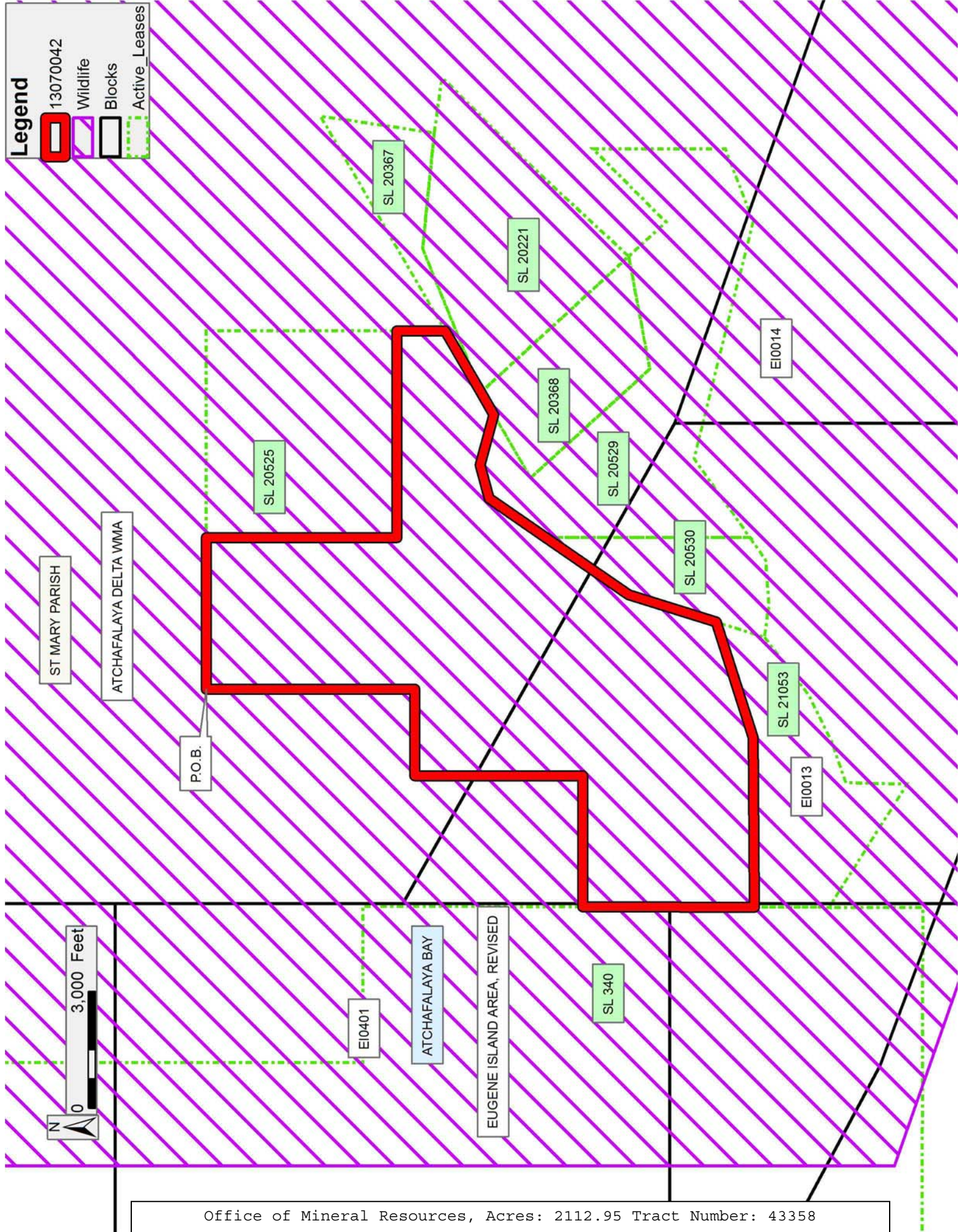
NOTE: This tract is located in an area designated by the Louisiana Legislature or the Wildlife and Fisheries Commission as a Public Oyster Seed Ground, Reservation, or area of Calcasieu or Sabine Lake. Proposed projects occurring in these areas will be evaluated on a case by case basis by Louisiana Department of Wildlife & Fisheries. Modifications to proposed project features including, but not limited to, access routes, well sites, flowlines, and appurtenant structures maybe required by the Louisiana Department of Wildlife and Fisheries. In addition, compensatory mitigation will be required to offset unavoidable habitat impacts.

Applicant: LESLIE M. COOPER

Bidder	Cash Payment	Price/Acre	Rental	Oil	Gas	Other

**Legend**

- 13070042
- Wildlife
- Blocks
- Active\_Leases



**TRACT 43359 - St. Mary Parish, Louisiana**

A portion of all lands located above the mean high water mark, together with lands now or formerly constituting the beds and bottoms of any water body of whatever description or nature belonging to the State of Louisiana which is now located within the boundaries of the Atchafalaya Delta Wildlife Management Area and not presently under mineral lease by the State of Louisiana on July 10, 2013, and more particularly located as follows: Beginning at a point within the Atchafalaya Delta Wildlife Management Area, having Coordinates of X = 1,967,237.41 and Y = 277,200.00; thence East 11,562.59 feet to a point having Coordinates of X = 1,978,800.00 and Y = 277,200.00; thence South 2,002.00 feet to a point having Coordinates of X = 1,978,800.00 and Y = 275,198.00; thence East 254.00 feet to a point being the Northeast corner of State Lease No. 20691 having Coordinates of X = 1,979,054.00 and Y = 275,198.00; thence South 1,918.00 feet along the Western boundary of said State Lease No. 20691 to its Southwest corner having Coordinates of X = 1,979,054.00 and Y = 273,280.00, said point also being the Northwest corner of State Lease No. 20689; thence South 00 degrees 57 minutes 46 seconds West 1,666.23 feet along the Western boundary of said State Lease No. 20689 to a point having Coordinates of X = 1,979,026.00 and Y = 271,614.00; thence continue South 00 degrees 39 minutes 58 seconds East 860.06 feet along the Western boundary of said State Lease No. 20689 to a point being its Southwest corner having Coordinates of X = 1,979,036.00 and Y = 270,754.00, said point also being on the Northern boundary of State Lease No. 20690; thence along the boundary of said State Lease No. 20690 the following courses: West 2,274.00 feet to a point having Coordinates of X = 1,976,762.00 and Y = 270,754.00; thence South 2,105.00 feet to a point having Coordinates of X = 1,976,762.00 and Y = 268,649.00; thence West 1,845.49 feet to a point being the Southeast corner of State Lease No. 21024 having Coordinates of X = 1,974,916.51 and Y = 268,649.00; thence along the boundaries of said State Lease No. 21024 the following courses: North 00 degrees 23 minutes 25 seconds East 4,035.09 feet to a point having Coordinates of X = 1,974,944.00 and Y = 272,684.00, South 88 degrees 25 minutes 08 seconds West 1,816.44 feet to a point having Coordinates of X = 1,973,128.25 and Y = 272,633.88 and South 55 degrees 21 minutes 28 seconds West 7,010.07 feet to a point being its Southwest corner having Coordinates of X = 1,967,360.95 and Y = 268,649.00; thence West 123.54 feet to a point having Coordinates of X = 1,967,237.41 and Y = 268,649.00; thence North 8,551.00 feet to the point of beginning, containing approximately **1,766.55 acres**, all as more particularly outlined on a plat on file in the Office of Mineral Resources, Department of Natural Resources. All bearings, distances and coordinates are based on Louisiana Coordinate System of 1927, (South Zone).

NOTE: The above description of the Tract nominated for lease has been provided and corrected, where required, exclusively by the nomination party. Any mineral lease selected from this Tract and awarded by the Louisiana State Mineral and Energy Board shall be without warranty of any kind, either express, implied, or statutory, including, but not limited

to, the implied warranties of merchantability and fitness for a particular purpose. Should the mineral lease awarded by the Louisiana State Mineral and Energy Board be subsequently modified, cancelled or abrogated due to the existence of conflicting leases, operating agreements, private claims or other future obligations or conditions which may affect all or any portion of the leased Tract, it shall not relieve the Lessee of the obligation to pay any bonus due thereon to the Louisiana State Mineral and Energy Board, nor shall the Louisiana State Mineral and Energy Board be obligated to refund any consideration paid by the Lessor prior to such modification, cancellation, or abrogation, including, but not limited to, bonuses, rentals and royalties.

NOTE: The mineral lease is located in the Atchafalaya Delta WMA under the jurisdiction of the Louisiana Department of Wildlife and Fisheries which has promulgated rules and regulations for the protection of game and wildlife on the aforesaid Tract and, therefore, shall be subject to said rules and regulations, a copy of which shall be attached to the mineral leases. In addition to the specific rules and regulations applicable, the following shall apply regarding operations under this mineral lease:

- No activities will be allowed without written authorization of the Louisiana Department of Wildlife and Fisheries.
- Proposed projects will be evaluated on a case by case basis. Modifications to proposed project features including but not limited to access routes, spoil placement, well sites, flowlines and appurtenant structures may be required by the Department of Wildlife and Fisheries.
- Compliance with the Atchafalaya Delta WMA regulations will be required unless otherwise specified by the Department of Wildlife and Fisheries.
- Compensatory mitigation will be required to offset unavoidable wetland impacts.
- Compensation and/or oyster seed ground surveys may be required by the Department for potential impacts to productive oyster seed grounds located within the management area.
- Removal of all structures, facilities and equipment will be required within 120 days of abandonment unless otherwise agreed to in writing by the Louisiana Department of Wildlife and Fisheries.
- No activities will be allowed during the hunting season unless approved by the Department.
- This tract is located within the emerging Atchafalaya Delta. No activities will be allowed on emergent islands, sub aerial mudflats or vegetated wetlands. Drilling will be restricted to passes and open water bays. The Louisiana Department of Wildlife and Fisheries (LDWF) shall have discretion to determine access routes. In the event that LDWF approves of dredging for access LDWF shall have discretion to require hydraulic or spray dredging.

- Prior to submitting application for wetland permits to Federal and State permitting agencies the leaseholder shall coordinate project details with the Department of Wildlife and Fisheries. Contact person for the Department will be Mike Windham at (504)284-5268.

Additionally, the Department will require a minimum bonus of \$350.00 per acre and a minimum royalty of 25%.

NOTE: The above described tract may be in the vicinity of existing shell reefs where drilling and dredging operations must be conducted in strict conformity with the regulations adopted by the Louisiana Department of Wildlife and Fisheries and/or the U.S. Corps of Engineers, U.S. Army.

NOTE: The State of Louisiana does hereby reserve, and this lease shall be subject to, the imprescriptible right of surface use in the nature of a servitude in favor of the Department of Natural Resources, including its Offices and Commissions, for the sole purpose of implementing, constructing, servicing and maintaining approved coastal zone management and/or restoration projects. Utilization of any and all rights derived under this lease by the mineral lessee, its agents, successors or assigns, shall not interfere with nor hinder the reasonable surface use by the Department of Natural Resources, its Offices or Commissions, as herein above reserved.

NOTE: This tract is located in an area designated by the Louisiana Legislature or the Wildlife and Fisheries Commission as a Public Oyster Seed Ground, Reservation, or area of Calcasieu or Sabine Lake. Proposed projects occurring in these areas will be evaluated on a case by case basis by Louisiana Department of Wildlife & Fisheries. Modifications to proposed project features including, but not limited to, access routes, well sites, flowlines, and appurtenant structures maybe required by the Louisiana Department of Wildlife and Fisheries. In addition, compensatory mitigation will be required to offset unavoidable habitat impacts.

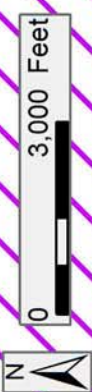
Applicant: LESLIE M. COOPER

Bidder	Cash Payment	Price/Acre	Rental	Oil	Gas	Other



**Legend**

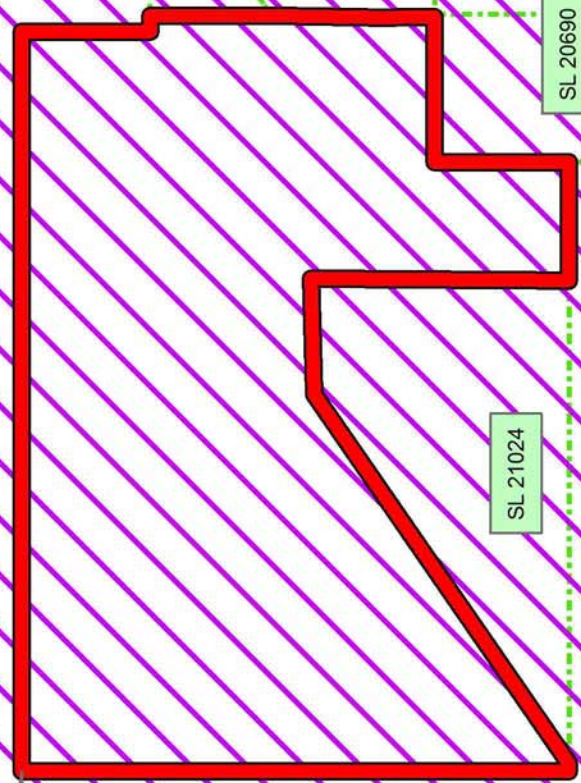
- 13070023
- Wildlife
- Active\_Leases



ST MARY PARISH

ATCHAFALAYA BAY

P.O.B.



SL 20691

SL 20689

SL 20690

SL 21024

ATCHAFALAYA DELTA WMA

**TRACT 43360 - St. Mary Parish, Louisiana**

A portion of all lands located above the mean high water mark, together with lands now or formerly constituting the beds and bottoms of any water body of whatever description or nature belonging to the State of Louisiana which is now located within the boundaries of the Atchafalaya Delta Wildlife Management Area and not presently under mineral lease by the State of Louisiana on July 10, 2013, and more particularly located as follows: Beginning at a point within the Atchafalaya Delta Wildlife Management Area, also located on the East boundary of State Lease No. 20527 having Coordinates of X = 1,965,525.73 and Y = 277,200.00; thence East 1,711.67 feet to a point having Coordinates of X = 1,967,237.41 and Y = 277,200.00; thence South 8,551.00 feet to a point having Coordinates of X = 1,967,237.41 and Y = 268,649.00; thence West 9,336.79 feet to a point located on the East boundary of State Lease No. 20528 having Coordinates of X = 1,957,900.62 and Y = 268,649.00; thence along the East boundary of said State Lease No. 20528 the following courses and distances: North 69 degrees 07 minutes 19 seconds East 178.18 feet to a corner having Coordinates of X = 1,958,067.09 and Y = 268,712.50, North 44 degrees 21 minutes 54 seconds East 6,728.06 feet to a corner having Coordinates of X = 1,962,771.52 and Y = 273,522.39 and North 12 degrees 10 minutes 53 seconds East 1,443.97 feet to its Northeast corner also being the Southeast corner of said State Lease No. 20527 having Coordinates of X = 1,963,076.21 and Y = 274,933.85; thence North 47 degrees 13 minutes 37 seconds East 3,337.00 feet along the East boundary of said State Lease No. 20527 to the point of beginning, containing approximately **1,058.88 acres**, all as more particularly outlined on a plat on file in the Office of Mineral Resources, Department of Natural Resources. All bearings, distances and coordinates are based on Louisiana Coordinate System of 1927, (South Zone).

NOTE: The above description of the Tract nominated for lease has been provided and corrected, where required, exclusively by the nomination party. Any mineral lease selected from this Tract and awarded by the Louisiana State Mineral and Energy Board shall be without warranty of any kind, either express, implied, or statutory, including, but not limited to, the implied warranties of merchantability and fitness for a particular purpose. Should the mineral lease awarded by the Louisiana State Mineral and Energy Board be subsequently modified, cancelled or abrogated due to the existence of conflicting leases, operating agreements, private claims or other future obligations or conditions which may affect all or any portion of the leased Tract, it shall not relieve the Lessee of the obligation to pay any bonus due thereon to the Louisiana State Mineral and Energy Board, nor shall the Louisiana State Mineral and Energy Board be obligated to refund any consideration paid by the Lessor prior to such modification, cancellation, or abrogation, including, but not limited to, bonuses, rentals and royalties.

NOTE: The mineral lease is located in the Atchafalaya Delta WMA under the jurisdiction of the Louisiana Department of Wildlife and Fisheries which

has promulgated rules and regulations for the protection of game and wildlife on the aforesaid Tract and, therefore, shall be subject to said rules and regulations, a copy of which shall be attached to the mineral leases. In addition to the specific rules and regulations applicable, the following shall apply regarding operations under this mineral lease:

- No activities will be allowed without written authorization of the Louisiana Department of Wildlife and Fisheries.
- Proposed projects will be evaluated on a case by case basis. Modifications to proposed project features including but not limited to access routes, spoil placement, well sites, flowlines and appurtenant structures may be required by the Department of Wildlife and Fisheries.
- Compliance with the Atchafalaya Delta WMA regulations will be required unless otherwise specified by the Department of Wildlife and Fisheries.
- Compensatory mitigation will be required to offset unavoidable wetland impacts.
- Compensation and/or oyster seed ground surveys may be required by the Department for potential impacts to productive oyster seed grounds located within the management area.
- Removal of all structures, facilities and equipment will be required within 120 days of abandonment unless otherwise agreed to in writing by the Louisiana Department of Wildlife and Fisheries.
- No activities will be allowed during the hunting season unless approved by the Department.
- This tract is located within the emerging Atchafalaya Delta. No activities will be allowed on emergent islands, sub aerial mudflats or vegetated wetlands. Drilling will be restricted to passes and open water bays. The Louisiana Department of Wildlife and Fisheries (LDWF) shall have discretion to determine access routes. In the event that LDWF approves of dredging for access LDWF shall have discretion to require hydraulic or spray dredging.
- Prior to submitting application for wetland permits to Federal and State permitting agencies the leaseholder shall coordinate project details with the Department of Wildlife and Fisheries. Contact person for the Department will be Mike Windham at (504)284-5268.

Additionally, the Department will require a minimum bonus of \$350.00 per acre and a minimum royalty of 25%.

NOTE: The above described tract may be in the vicinity of existing shell reefs where drilling and dredging operations must be conducted in strict conformity with the regulations adopted by the Louisiana Department of Wildlife and Fisheries and/or the U.S. Corps of Engineers, U.S. Army.

NOTE: The State of Louisiana does hereby reserve, and this lease shall be subject to, the imprescriptible right of surface use in the nature of a servitude in favor of the Department of Natural Resources, including its Offices and Commissions, for the sole purpose of implementing, constructing, servicing and maintaining approved coastal zone management and/or restoration projects. Utilization of any and all rights derived under this lease by the mineral lessee, its agents, successors or assigns, shall not interfere with nor hinder the reasonable surface use by the Department of Natural Resources, its Offices or Commissions, as herein above reserved.

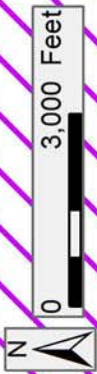
NOTE: This tract is located in an area designated by the Louisiana Legislature or the Wildlife and Fisheries Commission as a Public Oyster Seed Ground, Reservation, or area of Calcasieu or Sabine Lake. Proposed projects occurring in these areas will be evaluated on a case by case basis by Louisiana Department of Wildlife & Fisheries. Modifications to proposed project features including, but not limited to, access routes, well sites, flowlines, and appurtenant structures maybe required by the Louisiana Department of Wildlife and Fisheries. In addition, compensatory mitigation will be required to offset unavoidable habitat impacts.

Applicant: LESLIE M. COOPER

Bidder	Cash Payment	Price/Acre	Rental	Oil	Gas	Other

**Legend**

- 13070022
- Wildlife
- Active\_Leases



**TRACT 43361 - St. Mary Parish, Louisiana**

A portion of all lands located above the mean high water mark, together with lands now or formerly constituting the beds and bottoms of any water body of whatever description or nature belonging to the State of Louisiana which is now located within the boundaries of the Atchafalaya Delta Wildlife Management Area and not presently under mineral lease by the State of Louisiana on July 10, 2013, and more particularly located as follows: Beginning at a point within the Atchafalaya Delta Wildlife Management Area, having Coordinates of X = 2,019,748.00 and Y = 274,700.00; thence East 7,380.00 feet to a point having Coordinates of X = 2,027,128.00 and Y = 274,700.00; thence South 8,001.30 feet to a point having Coordinates of X = 2,027,128.00 and Y = 266,698.70; thence West 1,193.72 feet to the Northeast corner of State Lease No. 21119 having Coordinates of X = 2,025,934.28 and Y = 266,698.70; thence along the boundaries of said State Lease No. 21119 the following courses: continue West 5,334.28 feet to a point having Coordinates of X = 2,020,600.00 and Y = 266,698.70, South 4,216.48 feet to a point having Coordinates of X = 2,020,600.00 and Y = 262,482.22 and East 5,334.28 feet to its Southeast corner having Coordinates of X = 2,025,934.28 and Y = 262,482.22; thence South 2,538.22 feet to a point having Coordinates of X = 2,025,934.28 and Y = 259,944.00; thence West 6,186.28 feet to a point having Coordinates of X = 2,019,748.00 and Y = 259,944.00; thence North 14,756.00 feet to the point of beginning, containing approximately **1,798.53 acres**, all as more particularly outlined on a plat on file in the Office of Mineral Resources, Department of Natural Resources. All bearings, distances and coordinates are based on Louisiana Coordinate System of 1927, (South Zone).

NOTE: The above description of the Tract nominated for lease has been provided and corrected, where required, exclusively by the nomination party. Any mineral lease selected from this Tract and awarded by the Louisiana State Mineral and Energy Board shall be without warranty of any kind, either express, implied, or statutory, including, but not limited to, the implied warranties of merchantability and fitness for a particular purpose. Should the mineral lease awarded by the Louisiana State Mineral and Energy Board be subsequently modified, cancelled or abrogated due to the existence of conflicting leases, operating agreements, private claims or other future obligations or conditions which may affect all or any portion of the leased Tract, it shall not relieve the Lessee of the obligation to pay any bonus due thereon to the Louisiana State Mineral and Energy Board, nor shall the Louisiana State Mineral and Energy Board be obligated to refund any consideration paid by the Lessor prior to such modification, cancellation, or abrogation, including, but not limited to, bonuses, rentals and royalties.

NOTE: The mineral lease is located in the Atchafalaya Delta WMA under the jurisdiction of the Louisiana Department of Wildlife and Fisheries which has promulgated rules and regulations for the protection of game and wildlife on the aforesaid Tract and, therefore, shall be subject to said

rules and regulations, a copy of which shall be attached to the mineral leases. In addition to the specific rules and regulations applicable, the following shall apply regarding operations under this mineral lease:

- No activities will be allowed without written authorization of the Louisiana Department of Wildlife and Fisheries.
- Proposed projects will be evaluated on a case by case basis. Modifications to proposed project features including but not limited to access routes, spoil placement, well sites, flowlines and appurtenant structures may be required by the Department of Wildlife and Fisheries.
- Compliance with the Atchafalaya Delta WMA regulations will be required unless otherwise specified by the Department of Wildlife and Fisheries.
- Compensatory mitigation will be required to offset unavoidable wetland impacts.
- Compensation and/or oyster seed ground surveys may be required by the Department for potential impacts to productive oyster seed grounds located within the management area.
- Removal of all structures, facilities and equipment will be required within 120 days of abandonment unless otherwise agreed to in writing by the Louisiana Department of Wildlife and Fisheries.
- No activities will be allowed during the hunting season unless approved by the Department.
- This tract is located within the emerging Atchafalaya Delta. No activities will be allowed on emergent islands, sub aerial mudflats or vegetated wetlands. Drilling will be restricted to passes and open water bays. The Louisiana Department of Wildlife and Fisheries (LDWF) shall have discretion to determine access routes. In the event that LDWF approves of dredging for access LDWF shall have discretion to require hydraulic or spray dredging.
- Prior to submitting application for wetland permits to Federal and State permitting agencies the leaseholder shall coordinate project details with the Department of Wildlife and Fisheries. Contact person for the Department will be Mike Windham at (504)284-5268.

Additionally, the Department will require a minimum bonus of \$350.00 per acre and a minimum royalty of 25%.

NOTE: The State of Louisiana does hereby reserve, and this lease shall be subject to, the imprescriptible right of surface use in the nature of a servitude in favor of the Department of Natural Resources, including its Offices and Commissions, for the sole purpose of implementing, constructing, servicing and maintaining approved coastal zone management and/or restoration projects. Utilization of any and all rights derived under this lease by the mineral lessee, its agents, successors or assigns,

shall not interfere with nor hinder the reasonable surface use by the Department of Natural Resources, its Offices or Commissions, as herein above reserved.

NOTE: This tract is located in an area designated by the Louisiana Legislature or the Wildlife and Fisheries Commission as a Public Oyster Seed Ground, Reservation, or area of Calcasieu or Sabine Lake. Proposed projects occurring in these areas will be evaluated on a case by case basis by Louisiana Department of Wildlife & Fisheries. Modifications to proposed project features including, but not limited to, access routes, well sites, flowlines, and appurtenant structures maybe required by the Louisiana Department of Wildlife and Fisheries. In addition, compensatory mitigation will be required to offset unavoidable habitat impacts.

Applicant: LESLIE M. COOPER

Bidder	Cash Payment	Price/Acre	Rental	Oil	Gas	Other



**Legend**

- 13070027
- Wildlife
- Active\_Leases

ST MARY PARISH

P.O.B.

ATCHAFALAYA BAY

ATCHAFALAYA DELTA WMA

SL 21119

0 3,000 Feet



**TRACT 43362 - St. Mary Parish, Louisiana**

A portion of all lands located above the mean high water mark, together with lands now or formerly constituting the beds and bottoms of any water body of whatever description or nature belonging to the State of Louisiana which is now located within the boundaries of the Atchafalaya Delta Wildlife Management Area and not presently under mineral lease by the State of Louisiana on July 10, 2013, and more particularly located as follows: Beginning at a point within the Atchafalaya Delta Wildlife Management Area, having Coordinates of X = 1,997,608.00 and Y = 274,700.00; thence East 7,380.00 feet to a point having Coordinates of X = 2,004,988.00 and Y = 274,700.00; thence South 14,756.00 feet to a point having Coordinates of X = 2,004,988.00 and Y = 259,944.00; thence West 7,380.00 feet to a point having Coordinates of X = 1,997,608.00 and Y = 259,944.00; thence North 14,756.00 feet to the point of beginning, containing approximately **2,499.98 acres**, all as more particularly outlined on a plat on file in the Office of Mineral Resources, Department of Natural Resources. All bearings, distances and coordinates are based on Louisiana Coordinate System of 1927, (South Zone).

NOTE: The above description of the Tract nominated for lease has been provided and corrected, where required, exclusively by the nomination party. Any mineral lease selected from this Tract and awarded by the Louisiana State Mineral and Energy Board shall be without warranty of any kind, either express, implied, or statutory, including, but not limited to, the implied warranties of merchantability and fitness for a particular purpose. Should the mineral lease awarded by the Louisiana State Mineral and Energy Board be subsequently modified, cancelled or abrogated due to the existence of conflicting leases, operating agreements, private claims or other future obligations or conditions which may affect all or any portion of the leased Tract, it shall not relieve the Lessee of the obligation to pay any bonus due thereon to the Louisiana State Mineral and Energy Board, nor shall the Louisiana State Mineral and Energy Board be obligated to refund any consideration paid by the Lessor prior to such modification, cancellation, or abrogation, including, but not limited to, bonuses, rentals and royalties.

NOTE: The mineral lease is located in the Atchafalaya Delta WMA under the jurisdiction of the Louisiana Department of Wildlife and Fisheries which has promulgated rules and regulations for the protection of game and wildlife on the aforesaid Tract and, therefore, shall be subject to said rules and regulations, a copy of which shall be attached to the mineral leases. In addition to the specific rules and regulations applicable, the following shall apply regarding operations under this mineral lease:

- No activities will be allowed without written authorization of the Louisiana Department of Wildlife and Fisheries.
- Proposed projects will be evaluated on a case by case basis. Modifications to proposed project features including but not limited to access routes, spoil placement, well sites, flowlines and

appurtenant structures may be required by the Department of Wildlife and Fisheries.

- Compliance with the Atchafalaya Delta WMA regulations will be required unless otherwise specified by the Department of Wildlife and Fisheries.
- Compensatory mitigation will be required to offset unavoidable wetland impacts.
- Compensation and/or oyster seed ground surveys may be required by the Department for potential impacts to productive oyster seed grounds located within the management area.
- Removal of all structures, facilities and equipment will be required within 120 days of abandonment unless otherwise agreed to in writing by the Louisiana Department of Wildlife and Fisheries.
- No activities will be allowed during the hunting season unless approved by the Department.
- This tract is located within the emerging Atchafalaya Delta. No activities will be allowed on emergent islands, sub aerial mudflats or vegetated wetlands. Drilling will be restricted to passes and open water bays. The Louisiana Department of Wildlife and Fisheries (LDWF) shall have discretion to determine access routes. In the event that LDWF approves of dredging for access LDWF shall have discretion to require hydraulic or spray dredging.
- Prior to submitting application for wetland permits to Federal and State permitting agencies the leaseholder shall coordinate project details with the Department of Wildlife and Fisheries. Contact person for the Department will be Mike Windham at (504)284-5268.

Additionally, the Department will require a minimum bonus of \$350.00 per acre and a minimum royalty of 25%.

NOTE: The State of Louisiana does hereby reserve, and this lease shall be subject to, the imprescriptible right of surface use in the nature of a servitude in favor of the Department of Natural Resources, including its Offices and Commissions, for the sole purpose of implementing, constructing, servicing and maintaining approved coastal zone management and/or restoration projects. Utilization of any and all rights derived under this lease by the mineral lessee, its agents, successors or assigns, shall not interfere with nor hinder the reasonable surface use by the Department of Natural Resources, its Offices or Commissions, as herein above reserved.

NOTE: This tract is located in an area designated by the Louisiana Legislature or the Wildlife and Fisheries Commission as a Public Oyster Seed Ground, Reservation, or area of Calcasieu or Sabine Lake. Proposed projects occurring in these areas will be evaluated on a case by case basis by Louisiana Department of Wildlife & Fisheries. Modifications to proposed project features including, but not limited to, access routes,

well sites, flowlines, and appurtenant structures maybe required by the Louisiana Department of Wildlife and Fisheries. In addition, compensatory mitigation will be required to offset unavoidable habitat impacts.

Applicant: LESLIE M. COOPER

Bidder	Cash Payment	Price/Acre	Rental	Oil	Gas	Other

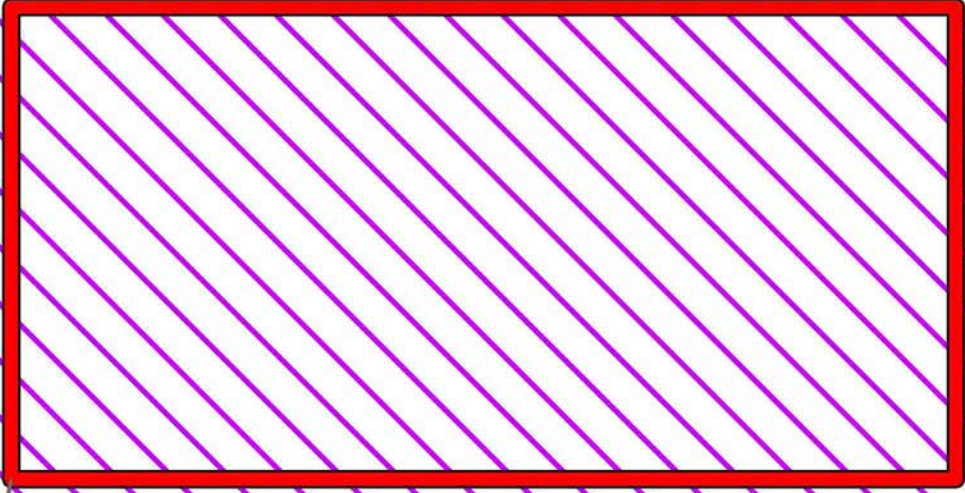
**Legend**  
13070024  
Wildlife

ST MARY PARISH

ATCHAFALAYA BAY

ATCHAFALAYA DELTA WMA

P.O.B.



**TRACT 43363 - St. Mary Parish, Louisiana**

A portion of all lands located above the mean high water mark, together with lands now or formerly constituting the beds and bottoms of any water body of whatever description or nature belonging to the State of Louisiana which is now located within the boundaries of the Atchafalaya Delta Wildlife Management Area and not presently under mineral lease by the State of Louisiana on July 10, 2013, and more particularly located as follows: Beginning at a point within the Atchafalaya Delta Wildlife Management Area, having Coordinates of X = 2,004,988.00 and Y = 274,700.00; thence East 7,380.00 feet to a point having Coordinates of X = 2,012,368.00 and Y = 274,700.00; thence South 14,756.00 feet to a point having Coordinates of X = 2,012,368.00 and Y = 259,944.00; thence West 7,380.00 feet to a point having Coordinates of X = 2,004,988.00 and Y = 259,944.00; thence North 14,756.00 feet to the point of beginning, containing approximately **2,499.98 acres**, all as more particularly outlined on a plat on file in the Office of Mineral Resources, Department of Natural Resources. All bearings, distances and coordinates are based on Louisiana Coordinate System of 1927, (South Zone).

NOTE: The above description of the Tract nominated for lease has been provided and corrected, where required, exclusively by the nomination party. Any mineral lease selected from this Tract and awarded by the Louisiana State Mineral and Energy Board shall be without warranty of any kind, either express, implied, or statutory, including, but not limited to, the implied warranties of merchantability and fitness for a particular purpose. Should the mineral lease awarded by the Louisiana State Mineral and Energy Board be subsequently modified, cancelled or abrogated due to the existence of conflicting leases, operating agreements, private claims or other future obligations or conditions which may affect all or any portion of the leased Tract, it shall not relieve the Lessee of the obligation to pay any bonus due thereon to the Louisiana State Mineral and Energy Board, nor shall the Louisiana State Mineral and Energy Board be obligated to refund any consideration paid by the Lessor prior to such modification, cancellation, or abrogation, including, but not limited to, bonuses, rentals and royalties.

NOTE: The mineral lease is located in the Atchafalaya Delta WMA under the jurisdiction of the Louisiana Department of Wildlife and Fisheries which has promulgated rules and regulations for the protection of game and wildlife on the aforesaid Tract and, therefore, shall be subject to said rules and regulations, a copy of which shall be attached to the mineral leases. In addition to the specific rules and regulations applicable, the following shall apply regarding operations under this mineral lease:

- No activities will be allowed without written authorization of the Louisiana Department of Wildlife and Fisheries.
- Proposed projects will be evaluated on a case by case basis. Modifications to proposed project features including but not limited to access routes, spoil placement, well sites, flowlines and

appurtenant structures may be required by the Department of Wildlife and Fisheries.

- Compliance with the Atchafalaya Delta WMA regulations will be required unless otherwise specified by the Department of Wildlife and Fisheries.
- Compensatory mitigation will be required to offset unavoidable wetland impacts.
- Compensation and/or oyster seed ground surveys may be required by the Department for potential impacts to productive oyster seed grounds located within the management area.
- Removal of all structures, facilities and equipment will be required within 120 days of abandonment unless otherwise agreed to in writing by the Louisiana Department of Wildlife and Fisheries.
- No activities will be allowed during the hunting season unless approved by the Department.
- This tract is located within the emerging Atchafalaya Delta. No activities will be allowed on emergent islands, sub aerial mudflats or vegetated wetlands. Drilling will be restricted to passes and open water bays. The Louisiana Department of Wildlife and Fisheries (LDWF) shall have discretion to determine access routes. In the event that LDWF approves of dredging for access LDWF shall have discretion to require hydraulic or spray dredging.
- Prior to submitting application for wetland permits to Federal and State permitting agencies the leaseholder shall coordinate project details with the Department of Wildlife and Fisheries. Contact person for the Department will be Mike Windham at (504)284-5268.

Additionally, the Department will require a minimum bonus of \$350.00 per acre and a minimum royalty of 25%.

NOTE: The State of Louisiana does hereby reserve, and this lease shall be subject to, the imprescriptible right of surface use in the nature of a servitude in favor of the Department of Natural Resources, including its Offices and Commissions, for the sole purpose of implementing, constructing, servicing and maintaining approved coastal zone management and/or restoration projects. Utilization of any and all rights derived under this lease by the mineral lessee, its agents, successors or assigns, shall not interfere with nor hinder the reasonable surface use by the Department of Natural Resources, its Offices or Commissions, as herein above reserved.

NOTE: This tract is located in an area designated by the Louisiana Legislature or the Wildlife and Fisheries Commission as a Public Oyster Seed Ground, Reservation, or area of Calcasieu or Sabine Lake. Proposed projects occurring in these areas will be evaluated on a case by case basis by Louisiana Department of Wildlife & Fisheries. Modifications to proposed project features including, but not limited to, access routes,

well sites, flowlines, and appurtenant structures maybe required by the Louisiana Department of Wildlife and Fisheries. In addition, compensatory mitigation will be required to offset unavoidable habitat impacts.

Applicant: LESLIE M. COOPER

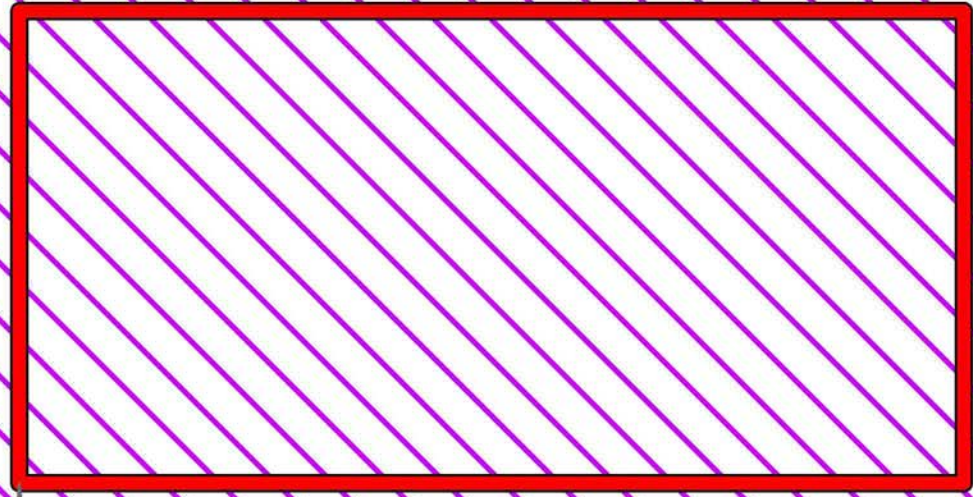
Bidder	Cash Payment	Price/Acre	Rental	Oil	Gas	Other



**Legend**  
13070025  
Wildlife

ST MARY PARISH

ATCHAFALAYA BAY



P.O.B.

ATCHAFALAYA DELTA WMA

N  
3,000 Feet

**TRACT 43364 - St. Mary Parish, Louisiana**

A portion of all lands located above the mean high water mark, together with lands now or formerly constituting the beds and bottoms of any water body of whatever description or nature belonging to the State of Louisiana which is now located within the boundaries of the Atchafalaya Delta Wildlife Management Area and not presently under mineral lease by the State of Louisiana on July 10, 2013, and more particularly located as follows: Beginning at a point within the Atchafalaya Delta Wildlife Management Area, having Coordinates of X = 2,012,368.00 and Y = 274,700.00; thence East 7,380.00 feet to a point having Coordinates of X = 2,019,748.00 and Y = 274,700.00; thence South 14,756.00 feet to a point having Coordinates of X = 2,019,748.00 and Y = 259,944.00; thence West 7,380.00 feet to a point having Coordinates of X = 2,012,368.00 and Y = 259,944.00; thence North 14,756.00 feet to the point of beginning, containing approximately **2,499.98 acres**, all as more particularly outlined on a plat on file in the Office of Mineral Resources, Department of Natural Resources. All bearings, distances and coordinates are based on Louisiana Coordinate System of 1927, (South Zone).

NOTE: The above description of the Tract nominated for lease has been provided and corrected, where required, exclusively by the nomination party. Any mineral lease selected from this Tract and awarded by the Louisiana State Mineral and Energy Board shall be without warranty of any kind, either express, implied, or statutory, including, but not limited to, the implied warranties of merchantability and fitness for a particular purpose. Should the mineral lease awarded by the Louisiana State Mineral and Energy Board be subsequently modified, cancelled or abrogated due to the existence of conflicting leases, operating agreements, private claims or other future obligations or conditions which may affect all or any portion of the leased Tract, it shall not relieve the Lessee of the obligation to pay any bonus due thereon to the Louisiana State Mineral and Energy Board, nor shall the Louisiana State Mineral and Energy Board be obligated to refund any consideration paid by the Lessor prior to such modification, cancellation, or abrogation, including, but not limited to, bonuses, rentals and royalties.

NOTE: The mineral lease is located in the Atchafalaya Delta WMA under the jurisdiction of the Louisiana Department of Wildlife and Fisheries which has promulgated rules and regulations for the protection of game and wildlife on the aforesaid Tract and, therefore, shall be subject to said rules and regulations, a copy of which shall be attached to the mineral leases. In addition to the specific rules and regulations applicable, the following shall apply regarding operations under this mineral lease:

- No activities will be allowed without written authorization of the Louisiana Department of Wildlife and Fisheries.
- Proposed projects will be evaluated on a case by case basis. Modifications to proposed project features including but not limited to access routes, spoil placement, well sites, flowlines and

appurtenant structures may be required by the Department of Wildlife and Fisheries.

- Compliance with the Atchafalaya Delta WMA regulations will be required unless otherwise specified by the Department of Wildlife and Fisheries.
- Compensatory mitigation will be required to offset unavoidable wetland impacts.
- Compensation and/or oyster seed ground surveys may be required by the Department for potential impacts to productive oyster seed grounds located within the management area.
- Removal of all structures, facilities and equipment will be required within 120 days of abandonment unless otherwise agreed to in writing by the Louisiana Department of Wildlife and Fisheries.
- No activities will be allowed during the hunting season unless approved by the Department.
- This tract is located within the emerging Atchafalaya Delta. No activities will be allowed on emergent islands, sub aerial mudflats or vegetated wetlands. Drilling will be restricted to passes and open water bays. The Louisiana Department of Wildlife and Fisheries (LDWF) shall have discretion to determine access routes. In the event that LDWF approves of dredging for access LDWF shall have discretion to require hydraulic or spray dredging.
- Prior to submitting application for wetland permits to Federal and State permitting agencies the leaseholder shall coordinate project details with the Department of Wildlife and Fisheries. Contact person for the Department will be Mike Windham at (504)284-5268.

Additionally, the Department will require a minimum bonus of \$350.00 per acre and a minimum royalty of 25%.

NOTE: The State of Louisiana does hereby reserve, and this lease shall be subject to, the imprescriptible right of surface use in the nature of a servitude in favor of the Department of Natural Resources, including its Offices and Commissions, for the sole purpose of implementing, constructing, servicing and maintaining approved coastal zone management and/or restoration projects. Utilization of any and all rights derived under this lease by the mineral lessee, its agents, successors or assigns, shall not interfere with nor hinder the reasonable surface use by the Department of Natural Resources, its Offices or Commissions, as herein above reserved.

NOTE: This tract is located in an area designated by the Louisiana Legislature or the Wildlife and Fisheries Commission as a Public Oyster Seed Ground, Reservation, or area of Calcasieu or Sabine Lake. Proposed projects occurring in these areas will be evaluated on a case by case basis by Louisiana Department of Wildlife & Fisheries. Modifications to proposed project features including, but not limited to, access routes,

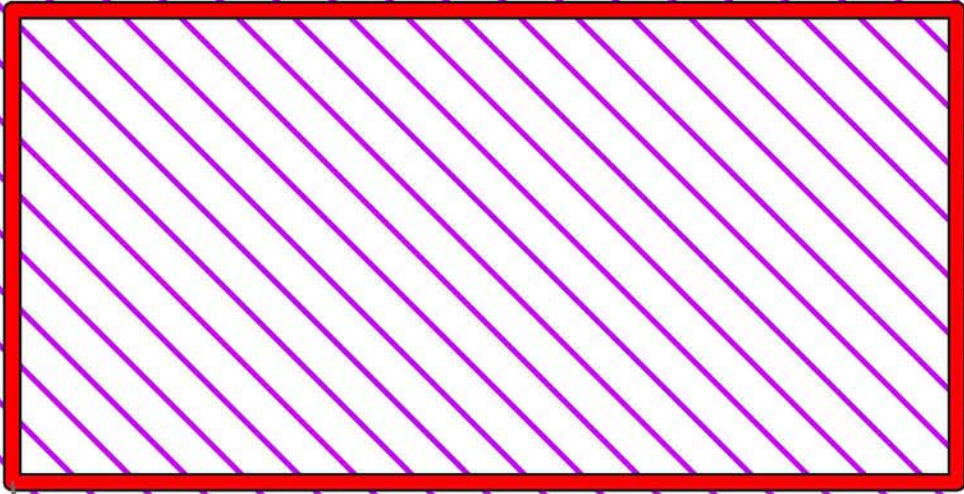
well sites, flowlines, and appurtenant structures maybe required by the Louisiana Department of Wildlife and Fisheries. In addition, compensatory mitigation will be required to offset unavoidable habitat impacts.

Applicant: LESLIE M. COOPER

Bidder	Cash Payment	Price/Acre	Rental	Oil	Gas	Other

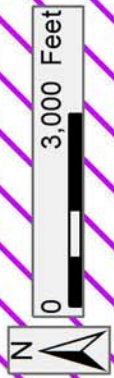
**Legend**  
13070026  
Wildlife

ST MARY PARISH  
ATCHAFALAYA BAY



P.O.B.

ATCHAFALAYA DELTA WMA



**TRACT 43365 - St. Mary Parish, Louisiana**

A portion of all lands located above the mean high water mark, together with lands now or formerly constituting the beds and bottoms of any water body of whatever description or nature belonging to the State of Louisiana which is now located within the boundaries of the Atchafalaya Delta Wildlife Management Area and not presently under mineral lease by the State of Louisiana on July 10, 2013, and more particularly located as follows: Beginning at a point having Coordinates of X = 1,986,762.00 and Y = 274,700.00; thence East 10,846.00 feet to a point having Coordinates of X = 1,997,608.00 and Y = 274,700.00; thence South 7,378.00 feet to a point having Coordinates of X = 1,997,608.00 and Y = 267,322.00; thence West 10,846.00 feet to a point on the Eastern boundary of State Lease No. 20255 having Coordinates of X = 1,986,762.00 and Y = 267,322.00; thence North 5,178.00 feet to a point being the Northeast corner of said State Lease No. 20255 having Coordinates of X = 1,986,762.00 and Y = 272,500.00; thence North 2,200.00 feet to the point of beginning, containing approximately **1,837.05 acres**, all as more particularly outlined on a plat on file in the Office of Mineral Resources, Department of Natural Resources. All bearings, distances and coordinates are based on Louisiana Coordinate System of 1927, (South Zone).

NOTE: The above description of the Tract nominated for lease has been provided and corrected, where required, exclusively by the nomination party. Any mineral lease selected from this Tract and awarded by the Louisiana State Mineral and Energy Board shall be without warranty of any kind, either express, implied, or statutory, including, but not limited to, the implied warranties of merchantability and fitness for a particular purpose. Should the mineral lease awarded by the Louisiana State Mineral and Energy Board be subsequently modified, cancelled or abrogated due to the existence of conflicting leases, operating agreements, private claims or other future obligations or conditions which may affect all or any portion of the leased Tract, it shall not relieve the Lessee of the obligation to pay any bonus due thereon to the Louisiana State Mineral and Energy Board, nor shall the Louisiana State Mineral and Energy Board be obligated to refund any consideration paid by the Lessor prior to such modification, cancellation, or abrogation, including, but not limited to, bonuses, rentals and royalties.

NOTE: The mineral lease is located in the Atchafalaya Delta WMA under the jurisdiction of the Louisiana Department of Wildlife and Fisheries which has promulgated rules and regulations for the protection of game and wildlife on the aforesaid Tract and, therefore, shall be subject to said rules and regulations, a copy of which shall be attached to the mineral leases. In addition to the specific rules and regulations applicable, the following shall apply regarding operations under this mineral lease:

- No activities will be allowed without written authorization of the Louisiana Department of Wildlife and Fisheries.

- Proposed projects will be evaluated on a case by case basis. Modifications to proposed project features including but not limited to access routes, spoil placement, well sites, flowlines and appurtenant structures may be required by the Department of Wildlife and Fisheries.
- Compliance with the Atchafalaya Delta WMA regulations will be required unless otherwise specified by the Department of Wildlife and Fisheries.
- Compensatory mitigation will be required to offset unavoidable wetland impacts.
- Compensation and/or oyster seed ground surveys may be required by the Department for potential impacts to productive oyster seed grounds located within the management area.
- Removal of all structures, facilities and equipment will be required within 120 days of abandonment unless otherwise agreed to in writing by the Louisiana Department of Wildlife and Fisheries.
- No activities will be allowed during the hunting season unless approved by the Department.
- This tract is located within the emerging Atchafalaya Delta. No activities will be allowed on emergent islands, sub aerial mudflats or vegetated wetlands. Drilling will be restricted to passes and open water bays. The Louisiana Department of Wildlife and Fisheries (LDWF) shall have discretion to determine access routes. In the event that LDWF approves of dredging for access LDWF shall have discretion to require hydraulic or spray dredging.
- Prior to submitting application for wetland permits to Federal and State permitting agencies the leaseholder shall coordinate project details with the Department of Wildlife and Fisheries. Contact person for the Department will be Mike Windham at (504)284-5268.

Additionally, the Department will require a minimum bonus of \$350.00 per acre and a minimum royalty of 25%.

NOTE: The State of Louisiana does hereby reserve, and this lease shall be subject to, the imprescriptible right of surface use in the nature of a servitude in favor of the Department of Natural Resources, including its Offices and Commissions, for the sole purpose of implementing, constructing, servicing and maintaining approved coastal zone management and/or restoration projects. Utilization of any and all rights derived under this lease by the mineral lessee, its agents, successors or assigns, shall not interfere with nor hinder the reasonable surface use by the Department of Natural Resources, its Offices or Commissions, as herein above reserved.

NOTE: This tract is located in an area designated by the Louisiana Legislature or the Wildlife and Fisheries Commission as a Public Oyster Seed Ground, Reservation, or area of Calcasieu or Sabine Lake. Proposed

projects occurring in these areas will be evaluated on a case by case basis by Louisiana Department of Wildlife & Fisheries. Modifications to proposed project features including, but not limited to, access routes, well sites, flowlines, and appurtenant structures maybe required by the Louisiana Department of Wildlife and Fisheries. In addition, compensatory mitigation will be required to offset unavoidable habitat impacts.

Applicant: LESLIE M. COOPER

Bidder	Cash Payment	Price/Acre	Rental	Oil	Gas	Other



**Legend**

- 13070028
- Wildlife
- Active\_Leases

ATCHAFALAYA DELTA WMA

ST MARY PARISH

ATCHAFALAYA BAY

P.O.B.

SL 20255



0 2,000 Feet