

TRACT 43376 - St. Mary Parish, Louisiana

A portion of all lands located above the mean high water mark, together with lands now or formerly constituting the beds and bottoms of any water body of whatever description or nature belonging to the State of Louisiana which is now located within the boundaries of the Atchafalaya Delta Wildlife Management Area and not presently under mineral lease by the State of Louisiana on July 10, 2013, and more particularly located as follows: Beginning at a point on the East boundary of State Lease No. 20694 having Coordinates of X = 1,967,237.40 and Y = 258,132.00; thence East 8,014.60 feet to a point having Coordinates of X = 1,975,252.00 and Y = 258,132.00; thence South 9,857.41 feet to a point on the South boundary of the Atchafalaya Delta Wildlife Management Area having Coordinates of X = 1,975,252.00 and Y = 248,274.59; thence Northwesterly, on a straight line, 5,948.00 feet along the South boundary of said Atchafalaya Delta Wildlife Management Area to the Southeast corner of State Lease No. 20695 having Coordinates of X = 1,969,636.56 and Y = 250,235.60; thence North 2,158.41 feet along the East boundary of said State Lease No. 20695 to its Northeast corner and the Southeast corner of State Lease No. 20694 having Coordinates of X = 1,969,636.56 and Y = 252,394.01; thence continue North 1,535.68 feet along the East boundary of said State Lease No. 20694 to the Southwest corner of State Lease No. 20959 having Coordinates of X = 1,969,636.56 and Y = 253,929.69; thence along the boundaries of said State Lease No. 20959 the following courses: East 2,179.44 feet to a point having Coordinates of X = 1,971,816.00 and Y = 253,929.69, North 2,980.31 feet to a point having Coordinates of X = 1,971,816.00 and Y = 256,910.00 and West 3,880.94 feet to its Northwest corner having Coordinates of X = 1,967,935.06 and Y = 256,910.00; thence North 29 degrees 43 minutes 21 seconds West 1,407.13 feet to the point of beginning, **LESS AND EXCEPT** that portion, if any, of the above described tract which may lie outside of the boundary of the Atchafalaya Delta Wildlife Management Area, containing approximately **1,052.75 acres**, all as more particularly outlined on a plat on file in the Office of Mineral Resources, Department of Natural Resources. All bearings, distances and coordinates are based on Louisiana Coordinate System of 1927, (South Zone).

NOTE: The above description of the Tract nominated for lease has been provided and corrected, where required, exclusively by the nomination party. Any mineral lease selected from this Tract and awarded by the Louisiana State Mineral and Energy Board shall be without warranty of any kind, either express, implied, or statutory, including, but not limited to, the implied warranties of merchantability and fitness for a particular purpose. Should the mineral lease awarded by the Louisiana State Mineral and Energy Board be subsequently modified, cancelled or abrogated due to the existence of conflicting leases, operating agreements, private claims or other future obligations or conditions which may affect all or any portion of the leased Tract, it shall not relieve the Lessee of the obligation to pay any bonus due thereon to the Louisiana State Mineral and Energy Board, nor shall the Louisiana State Mineral and Energy Board be obligated to refund any consideration paid by the Lessor prior to such

modification, cancellation, or abrogation, including, but not limited to, bonuses, rentals and royalties.

NOTE: The mineral lease is located in the Atchafalaya Delta WMA under the jurisdiction of the Louisiana Department of Wildlife and Fisheries which has promulgated rules and regulations for the protection of game and wildlife on the aforesaid Tract and, therefore, shall be subject to said rules and regulations, a copy of which shall be attached to the mineral leases. In addition to the specific rules and regulations applicable, the following shall apply regarding operations under this mineral lease:

- No activities will be allowed without written authorization of the Louisiana Department of Wildlife and Fisheries.
- Proposed projects will be evaluated on a case by case basis. Modifications to proposed project features including but not limited to access routes, spoil placement, well sites, flowlines and appurtenant structures may be required by the Department of Wildlife and Fisheries.
- Compliance with the Atchafalaya Delta WMA regulations will be required unless otherwise specified by the Department of Wildlife and Fisheries.
- Compensatory mitigation will be required to offset unavoidable wetland impacts.
- Compensation and/or oyster seed ground surveys may be required by the Department for potential impacts to productive oyster seed grounds located within the management area.
- Removal of all structures, facilities and equipment will be required within 120 days of abandonment unless otherwise agreed to in writing by the Louisiana Department of Wildlife and Fisheries.
- No activities will be allowed during the hunting season unless approved by the Department.
- This tract is located within the emerging Atchafalaya Delta. No activities will be allowed on emergent islands, sub aerial mudflats or vegetated wetlands. Drilling will be restricted to passes and open water bays. The Louisiana Department of Wildlife and Fisheries (LDWF) shall have discretion to determine access routes. In the event that LDWF approves of dredging for access LDWF shall have discretion to require hydraulic or spray dredging.
- Prior to submitting application for wetland permits to Federal and State permitting agencies the leaseholder shall coordinate project details with the Department of Wildlife and Fisheries. Contact person for the Department will be Mike Windham at (504)284-5268.

Additionally, the Department will require a minimum bonus of \$350.00 per acre and a minimum royalty of 25%.

NOTE: The above described tract may be in the vicinity of existing shell reefs where drilling and dredging operations must be conducted in strict conformity with the regulations adopted by the Louisiana Department of Wildlife and Fisheries and/or the U.S. Corps of Engineers, U.S. Army.

NOTE: The State of Louisiana does hereby reserve, and this lease shall be subject to, the imprescriptible right of surface use in the nature of a servitude in favor of the Department of Natural Resources, including its Offices and Commissions, for the sole purpose of implementing, constructing, servicing and maintaining approved coastal zone management and/or restoration projects. Utilization of any and all rights derived under this lease by the mineral lessee, its agents, successors or assigns, shall not interfere with nor hinder the reasonable surface use by the Department of Natural Resources, its Offices or Commissions, as herein above reserved.

NOTE: It appears, according to our records, that a portion of this Tract is located within the restrictive safety fairway area as set out by the Corps of Engineers, U.S. Army and/or the restrictive anchorage area as set out by the U.S. Coast Guard.

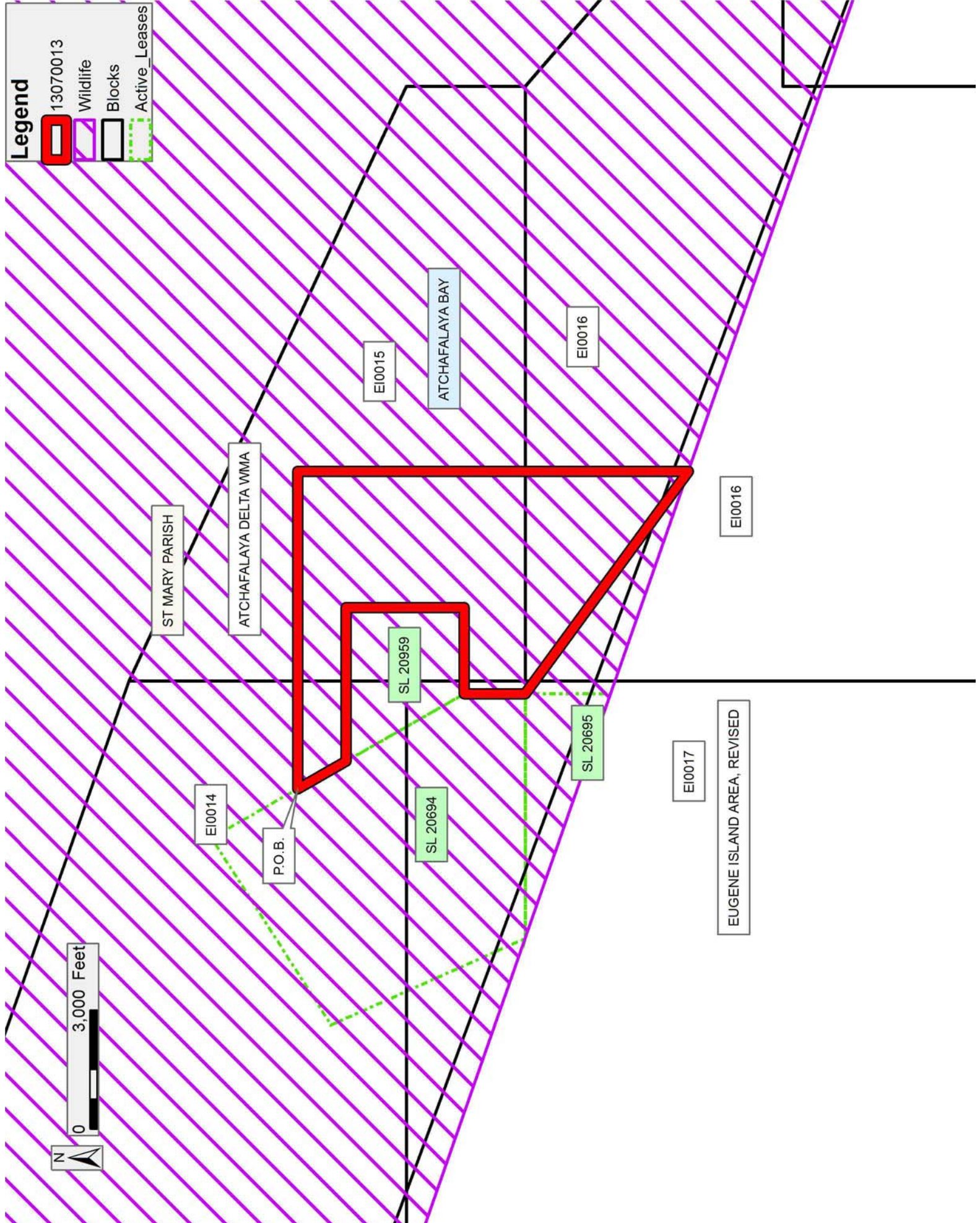
NOTE: This tract is located in an area designated by the Louisiana Legislature or the Wildlife and Fisheries Commission as a Public Oyster Seed Ground, Reservation, or area of Calcasieu or Sabine Lake. Proposed projects occurring in these areas will be evaluated on a case by case basis by Louisiana Department of Wildlife & Fisheries. Modifications to proposed project features including, but not limited to, access routes, well sites, flowlines, and appurtenant structures maybe required by the Louisiana Department of Wildlife and Fisheries. In addition, compensatory mitigation will be required to offset unavoidable habitat impacts.

Applicant: LESLIE M. COOPER

Bidder	Cash Payment	Price/Acre	Rental	Oil	Gas	Other

Legend

- 13070013
- Wildlife
- Blocks
- Active_Leases



TRACT 43377 - St. Mary Parish, Louisiana

A portion of all lands located above the mean high water mark, together with lands now or formerly constituting the beds and bottoms of any water body of whatever description or nature belonging to the State of Louisiana which is now located within the boundaries of the Atchafalaya Delta Wildlife Management Area and not presently under mineral lease by the State of Louisiana on July 10, 2013, and more particularly located as follows: Beginning at a point within the Atchafalaya Delta Wildlife Management Area, having Coordinates of X = 1,975,252.00 and Y = 256,927.00; thence East 18,480.00 feet to a point having Coordinates of X = 1,993,732.00 and Y = 256,927.00; thence South 5,890.00 feet to a point having Coordinates of X = 1,993,732.00 and Y = 251,037.00; thence West 18,480.00 feet to a point having Coordinates of X = 1,975,252.00 and Y = 251,037.00; thence North 5,890.00 feet to the point of beginning, containing approximately **2,498.79 acres**, all as more particularly outlined on a plat on file in the Office of Mineral Resources, Department of Natural Resources. All bearings, distances and coordinates are based on Louisiana Coordinate System of 1927, (South Zone).

NOTE: The above description of the Tract nominated for lease has been provided and corrected, where required, exclusively by the nomination party. Any mineral lease selected from this Tract and awarded by the Louisiana State Mineral and Energy Board shall be without warranty of any kind, either express, implied, or statutory, including, but not limited to, the implied warranties of merchantability and fitness for a particular purpose. Should the mineral lease awarded by the Louisiana State Mineral and Energy Board be subsequently modified, cancelled or abrogated due to the existence of conflicting leases, operating agreements, private claims or other future obligations or conditions which may affect all or any portion of the leased Tract, it shall not relieve the Lessee of the obligation to pay any bonus due thereon to the Louisiana State Mineral and Energy Board, nor shall the Louisiana State Mineral and Energy Board be obligated to refund any consideration paid by the Lessor prior to such modification, cancellation, or abrogation, including, but not limited to, bonuses, rentals and royalties.

NOTE: The mineral lease is located in the Atchafalaya Delta WMA under the jurisdiction of the Louisiana Department of Wildlife and Fisheries which has promulgated rules and regulations for the protection of game and wildlife on the aforesaid Tract and, therefore, shall be subject to said rules and regulations, a copy of which shall be attached to the mineral leases. In addition to the specific rules and regulations applicable, the following shall apply regarding operations under this mineral lease:

- No activities will be allowed without written authorization of the Louisiana Department of Wildlife and Fisheries.
- Proposed projects will be evaluated on a case by case basis. Modifications to proposed project features including but not limited to access routes, spoil placement, well sites, flowlines and

appurtenant structures may be required by the Department of Wildlife and Fisheries.

- Compliance with the Atchafalaya Delta WMA regulations will be required unless otherwise specified by the Department of Wildlife and Fisheries.
- Compensatory mitigation will be required to offset unavoidable wetland impacts.
- Compensation and/or oyster seed ground surveys may be required by the Department for potential impacts to productive oyster seed grounds located within the management area.
- Removal of all structures, facilities and equipment will be required within 120 days of abandonment unless otherwise agreed to in writing by the Louisiana Department of Wildlife and Fisheries.
- No activities will be allowed during the hunting season unless approved by the Department.
- This tract is located within the emerging Atchafalaya Delta. No activities will be allowed on emergent islands, sub aerial mudflats or vegetated wetlands. Drilling will be restricted to passes and open water bays. The Louisiana Department of Wildlife and Fisheries (LDWF) shall have discretion to determine access routes. In the event that LDWF approves of dredging for access LDWF shall have discretion to require hydraulic or spray dredging.
- Prior to submitting application for wetland permits to Federal and State permitting agencies the leaseholder shall coordinate project details with the Department of Wildlife and Fisheries. Contact person for the Department will be Mike Windham at (504)284-5268.

Additionally, the Department will require a minimum bonus of \$350.00 per acre and a minimum royalty of 25%.

NOTE: The above described tract may be in the vicinity of existing shell reefs where drilling and dredging operations must be conducted in strict conformity with the regulations adopted by the Louisiana Department of Wildlife and Fisheries and/or the U.S. Corps of Engineers, U.S. Army.

NOTE: The State of Louisiana does hereby reserve, and this lease shall be subject to, the imprescriptible right of surface use in the nature of a servitude in favor of the Department of Natural Resources, including its Offices and Commissions, for the sole purpose of implementing, constructing, servicing and maintaining approved coastal zone management and/or restoration projects. Utilization of any and all rights derived under this lease by the mineral lessee, its agents, successors or assigns, shall not interfere with nor hinder the reasonable surface use by the Department of Natural Resources, its Offices or Commissions, as herein above reserved.

NOTE: It appears, according to our records, that a portion of this Tract is located within the restrictive safety fairway area as set out by the Corps of Engineers, U.S. Army and/or the restrictive anchorage area as set out by the U.S. Coast Guard.

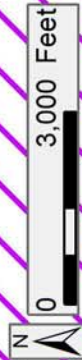
NOTE: This tract is located in an area designated by the Louisiana Legislature or the Wildlife and Fisheries Commission as a Public Oyster Seed Ground, Reservation, or area of Calcasieu or Sabine Lake. Proposed projects occurring in these areas will be evaluated on a case by case basis by Louisiana Department of Wildlife & Fisheries. Modifications to proposed project features including, but not limited to, access routes, well sites, flowlines, and appurtenant structures maybe required by the Louisiana Department of Wildlife and Fisheries. In addition, compensatory mitigation will be required to offset unavoidable habitat impacts.

Applicant: LESLIE M. COOPER

Bidder	Cash Payment	Price/Acre	Rental	Oil	Gas	Other

Legend

- 13070039
- Wildlife
- Blocks



ST MARY PARISH
 ATCHAFALAYA BAY
 ATCHAFALAYA DELTA WMA

P.O.B.

EI0015

EUGENE ISLAND AREA, REVISED

EI0016

EI0036

TRACT 43378 - St. Mary Parish, Louisiana

A portion of all lands located above the mean high water mark, together with lands now or formerly constituting the beds and bottoms of any water body of whatever description or nature belonging to the State of Louisiana which is now located within the boundaries of the Atchafalaya Delta Wildlife Management Area and not presently under mineral lease by the State of Louisiana on July 10, 2013, and more particularly located as follows: Beginning at a point on the East boundary of State Lease No. 7868, as amended and the Southwest corner of State Lease No. 21025 having Coordinates of X = 1,958,920.99 and Y = 255,566.61; thence South 86 degrees 30 minutes 16 seconds East 3,215.65 feet along the South boundary of said State Lease No. 21025 to its Southeast corner and a point on the West boundary of State Lease No. 20694 having Coordinates of X = 1,962,130.67 and Y = 255,369.55; thence South 24 degrees 00 minutes 23 seconds East 3,257.29 feet along the West boundary of said State Lease No. 20694 to its Southwest corner and point on the South boundary of the Atchafalaya Delta Wildlife Management Area having Coordinates of X = 1,963,455.85 and Y = 252,394.01; thence Northwesterly, on a straight line, 4,297.76 feet along the South boundary of said Atchafalaya Delta Wildlife Management Area to a point on the West boundary of State Lease No. 7870, as amended having Coordinates of X = 1,959,398.38 and Y = 253,810.95; thence along the boundaries of said State Lease No. 7870 and said State Lease No. 7868 the following: along an arc to the right with a radius of 8,050 feet and a center at X = 1,966,871.96 and Y = 256,824.46 to the point of beginning, **LESS AND EXCEPT** that portion, if any, of the above described tract which may lie outside of the boundary of the Atchafalaya Delta Wildlife Management Area, containing approximately **182.03 acres**, all as more particularly outlined on a plat on file in the Office of Mineral Resources, Department of Natural Resources. All bearings, distances and coordinates are based on Louisiana Coordinate System of 1927, (South Zone).

NOTE: The above description of the Tract nominated for lease has been provided and corrected, where required, exclusively by the nomination party. Any mineral lease selected from this Tract and awarded by the Louisiana State Mineral and Energy Board shall be without warranty of any kind, either express, implied, or statutory, including, but not limited to, the implied warranties of merchantability and fitness for a particular purpose. Should the mineral lease awarded by the Louisiana State Mineral and Energy Board be subsequently modified, cancelled or abrogated due to the existence of conflicting leases, operating agreements, private claims or other future obligations or conditions which may affect all or any portion of the leased Tract, it shall not relieve the Lessee of the obligation to pay any bonus due thereon to the Louisiana State Mineral and Energy Board, nor shall the Louisiana State Mineral and Energy Board be obligated to refund any consideration paid by the Lessor prior to such modification, cancellation, or abrogation, including, but not limited to, bonuses, rentals and royalties.

NOTE: The mineral lease is located in the Atchafalaya Delta WMA under the jurisdiction of the Louisiana Department of Wildlife and Fisheries which has promulgated rules and regulations for the protection of game and wildlife on the aforesaid Tract and, therefore, shall be subject to said rules and regulations, a copy of which shall be attached to the mineral leases. In addition to the specific rules and regulations applicable, the following shall apply regarding operations under this mineral lease:

- No activities will be allowed without written authorization of the Louisiana Department of Wildlife and Fisheries.
- Proposed projects will be evaluated on a case by case basis. Modifications to proposed project features including but not limited to access routes, spoil placement, well sites, flowlines and appurtenant structures may be required by the Department of Wildlife and Fisheries.
- Compliance with the Atchafalaya Delta WMA regulations will be required unless otherwise specified by the Department of Wildlife and Fisheries.
- Compensatory mitigation will be required to offset unavoidable wetland impacts.
- Compensation and/or oyster seed ground surveys may be required by the Department for potential impacts to productive oyster seed grounds located within the management area.
- Removal of all structures, facilities and equipment will be required within 120 days of abandonment unless otherwise agreed to in writing by the Louisiana Department of Wildlife and Fisheries.
- No activities will be allowed during the hunting season unless approved by the Department.
- This tract is located within the emerging Atchafalaya Delta. No activities will be allowed on emergent islands, sub aerial mudflats or vegetated wetlands. Drilling will be restricted to passes and open water bays. The Louisiana Department of Wildlife and Fisheries (LDWF) shall have discretion to determine access routes. In the event that LDWF approves of dredging for access LDWF shall have discretion to require hydraulic or spray dredging.
- Prior to submitting application for wetland permits to Federal and State permitting agencies the leaseholder shall coordinate project details with the Department of Wildlife and Fisheries. Contact person for the Department will be Mike Windham at (504)284-5268.

Additionally, the Department will require a minimum bonus of \$350.00 per acre and a minimum royalty of 25%.

NOTE: The above described tract may be in the vicinity of existing shell reefs where drilling and dredging operations must be conducted in strict

conformity with the regulations adopted by the Louisiana Department of Wildlife and Fisheries and/or the U.S. Corps of Engineers, U.S. Army.

NOTE: The State of Louisiana does hereby reserve, and this lease shall be subject to, the imprescriptible right of surface use in the nature of a servitude in favor of the Department of Natural Resources, including its Offices and Commissions, for the sole purpose of implementing, constructing, servicing and maintaining approved coastal zone management and/or restoration projects. Utilization of any and all rights derived under this lease by the mineral lessee, its agents, successors or assigns, shall not interfere with nor hinder the reasonable surface use by the Department of Natural Resources, its Offices or Commissions, as herein above reserved.

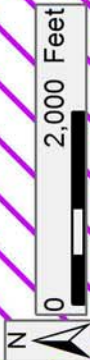
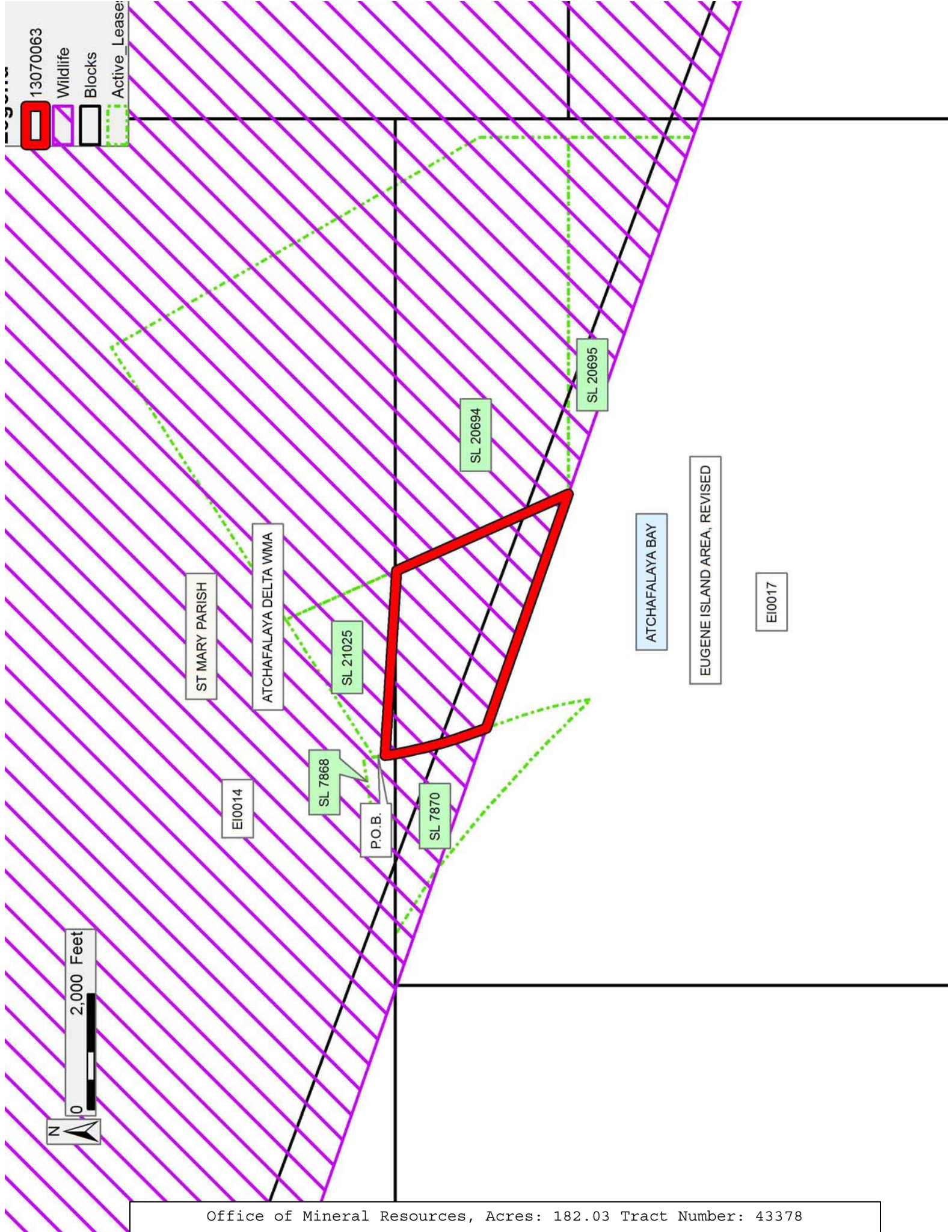
NOTE: This tract is located in an area designated by the Louisiana Legislature or the Wildlife and Fisheries Commission as a Public Oyster Seed Ground, Reservation, or area of Calcasieu or Sabine Lake. Proposed projects occurring in these areas will be evaluated on a case by case basis by Louisiana Department of Wildlife & Fisheries. Modifications to proposed project features including, but not limited to, access routes, well sites, flowlines, and appurtenant structures maybe required by the Louisiana Department of Wildlife and Fisheries. In addition, compensatory mitigation will be required to offset unavoidable habitat impacts.

Applicant: LESLIE M. COOPER

Bidder	Cash Payment	Price/Acre	Rental	Oil	Gas	Other

13070063

- Wildlife
- Blocks
- Active_Lease



TRACT 43379 - St. Mary and Terrebonne Parishes, Louisiana

A portion of all lands located above the mean high water mark, together with lands now or formerly constituting the beds and bottoms of any water body of whatever description or nature belonging to the State of Louisiana which is now located within the boundaries of the Atchafalaya Delta Wildlife Management Area and not presently under mineral lease by the State of Louisiana on July 10, 2013, and more particularly located as follows: Beginning at a point having Coordinates of X = 2,008,488.00 and Y = 253,066.00; thence East 14,756.00 feet to a point having Coordinates of X = 2,023,244.00 and Y = 253,066.00; thence South approximately 345 feet to a point of intersection with the Eastern boundary of the Atchafalaya Delta Wildlife Management Area having a Coordinate of X = 2,023,244.00; thence Southwesterly and Southerly along the meanders of the boundary of said Atchafalaya Delta Wildlife Management Area to a point of intersection with an East West line having a Coordinate of Y = 245,188.00; thence West approximately 9,983 feet to a point having Coordinates of X = 2,008,488.00 and Y = 245,188.00; thence North 7,878.00 feet to the point of beginning, containing approximately **2,097 acres**, all as more particularly outlined on a plat on file in the Office of Mineral Resources, Department of Natural Resources. All bearings, distances and coordinates are based on Louisiana Coordinate System of 1927, (South Zone).

NOTE: The above description of the Tract nominated for lease has been provided and corrected, where required, exclusively by the nomination party. Any mineral lease selected from this Tract and awarded by the Louisiana State Mineral and Energy Board shall be without warranty of any kind, either express, implied, or statutory, including, but not limited to, the implied warranties of merchantability and fitness for a particular purpose. Should the mineral lease awarded by the Louisiana State Mineral and Energy Board be subsequently modified, cancelled or abrogated due to the existence of conflicting leases, operating agreements, private claims or other future obligations or conditions which may affect all or any portion of the leased Tract, it shall not relieve the Lessee of the obligation to pay any bonus due thereon to the Louisiana State Mineral and Energy Board, nor shall the Louisiana State Mineral and Energy Board be obligated to refund any consideration paid by the Lessor prior to such modification, cancellation, or abrogation, including, but not limited to, bonuses, rentals and royalties.

NOTE: The mineral lease is located in the Atchafalaya Delta WMA under the jurisdiction of the Louisiana Department of Wildlife and Fisheries which has promulgated rules and regulations for the protection of game and wildlife on the aforesaid Tract and, therefore, shall be subject to said rules and regulations, a copy of which shall be attached to the mineral leases. In addition to the specific rules and regulations applicable, the following shall apply regarding operations under this mineral lease:

- No activities will be allowed without written authorization of the Louisiana Department of Wildlife and Fisheries.

- Proposed projects will be evaluated on a case by case basis. Modifications to proposed project features including but not limited to access routes, spoil placement, well sites, flowlines and appurtenant structures may be required by the Department of Wildlife and Fisheries.
- Compliance with the Atchafalaya Delta WMA regulations will be required unless otherwise specified by the Department of Wildlife and Fisheries.
- Compensatory mitigation will be required to offset unavoidable wetland impacts.
- Compensation and/or oyster seed ground surveys may be required by the Department for potential impacts to productive oyster seed grounds located within the management area.
- Removal of all structures, facilities and equipment will be required within 120 days of abandonment unless otherwise agreed to in writing by the Louisiana Department of Wildlife and Fisheries.
- No activities will be allowed during the hunting season unless approved by the Department.
- This tract is located within the emerging Atchafalaya Delta. No activities will be allowed on emergent islands, sub aerial mudflats or vegetated wetlands. Drilling will be restricted to passes and open water bays. The Louisiana Department of Wildlife and Fisheries (LDWF) shall have discretion to determine access routes. In the event that LDWF approves of dredging for access LDWF shall have discretion to require hydraulic or spray dredging.
- Prior to submitting application for wetland permits to Federal and State permitting agencies the leaseholder shall coordinate project details with the Department of Wildlife and Fisheries. Contact person for the Department will be Mike Windham at (504)284-5268.

Additionally, the Department will require a minimum bonus of \$350.00 per acre and a minimum royalty of 25%.

NOTE: The State of Louisiana does hereby reserve, and this lease shall be subject to, the imprescriptible right of surface use in the nature of a servitude in favor of the Department of Natural Resources, including its Offices and Commissions, for the sole purpose of implementing, constructing, servicing and maintaining approved coastal zone management and/or restoration projects. Utilization of any and all rights derived under this lease by the mineral lessee, its agents, successors or assigns, shall not interfere with nor hinder the reasonable surface use by the Department of Natural Resources, its Offices or Commissions, as herein above reserved.

NOTE: This tract is located in an area designated by the Louisiana Legislature or the Wildlife and Fisheries Commission as a Public Oyster Seed Ground, Reservation, or area of Calcasieu or Sabine Lake. Proposed

projects occurring in these areas will be evaluated on a case by case basis by Louisiana Department of Wildlife & Fisheries. Modifications to proposed project features including, but not limited to, access routes, well sites, flowlines, and appurtenant structures maybe required by the Louisiana Department of Wildlife and Fisheries. In addition, compensatory mitigation will be required to offset unavoidable habitat impacts.

Applicant: LESLIE M. COOPER

Bidder	Cash Payment	Price/Acre	Rental	Oil	Gas	Other

Legend

- 13070040
- Wildlife
- Counties

TERREBONNE PARISH

ST MARY PARISH

ATCHAFALAYA BAY

P.O.B.

ATCHAFALAYA DELTA WMA



TRACT 43380 - St. Mary Parish, Louisiana

A portion of all lands located above the mean high water mark, together with lands now or formerly constituting the beds and bottoms of any water body of whatever description or nature belonging to the State of Louisiana which is now located within the boundaries of the Atchafalaya Delta Wildlife Management Area and not presently under mineral lease by the State of Louisiana on July 10, 2013, and more particularly located as follows: Beginning at a point within the Atchafalaya Delta Wildlife Management Area, having Coordinates of X = 1,993,732.00 and Y = 252,566.00; thence East 14,756.00 feet to a point having Coordinates of X = 2,008,488.00 and Y = 252,566.00; thence South 7,378.00 feet to a point having Coordinates of X = 2,008,488.00 and Y = 245,188.00; thence West 14,756.00 feet to a point having Coordinates of X = 1,993,732.00 and Y = 245,188.00; thence North 7,378.00 feet to the point of beginning, containing approximately **2,499.31 acres**, all as more particularly outlined on a plat on file in the Office of Mineral Resources, Department of Natural Resources. All bearings, distances and coordinates are based on Louisiana Coordinate System of 1927, (South Zone).

NOTE: The above description of the Tract nominated for lease has been provided and corrected, where required, exclusively by the nomination party. Any mineral lease selected from this Tract and awarded by the Louisiana State Mineral and Energy Board shall be without warranty of any kind, either express, implied, or statutory, including, but not limited to, the implied warranties of merchantability and fitness for a particular purpose. Should the mineral lease awarded by the Louisiana State Mineral and Energy Board be subsequently modified, cancelled or abrogated due to the existence of conflicting leases, operating agreements, private claims or other future obligations or conditions which may affect all or any portion of the leased Tract, it shall not relieve the Lessee of the obligation to pay any bonus due thereon to the Louisiana State Mineral and Energy Board, nor shall the Louisiana State Mineral and Energy Board be obligated to refund any consideration paid by the Lessor prior to such modification, cancellation, or abrogation, including, but not limited to, bonuses, rentals and royalties.

NOTE: The mineral lease is located in the Atchafalaya Delta WMA under the jurisdiction of the Louisiana Department of Wildlife and Fisheries which has promulgated rules and regulations for the protection of game and wildlife on the aforesaid Tract and, therefore, shall be subject to said rules and regulations, a copy of which shall be attached to the mineral leases. In addition to the specific rules and regulations applicable, the following shall apply regarding operations under this mineral lease:

- No activities will be allowed without written authorization of the Louisiana Department of Wildlife and Fisheries.
- Proposed projects will be evaluated on a case by case basis. Modifications to proposed project features including but not limited to access routes, spoil placement, well sites, flowlines and

appurtenant structures may be required by the Department of Wildlife and Fisheries.

- Compliance with the Atchafalaya Delta WMA regulations will be required unless otherwise specified by the Department of Wildlife and Fisheries.
- Compensatory mitigation will be required to offset unavoidable wetland impacts.
- Compensation and/or oyster seed ground surveys may be required by the Department for potential impacts to productive oyster seed grounds located within the management area.
- Removal of all structures, facilities and equipment will be required within 120 days of abandonment unless otherwise agreed to in writing by the Louisiana Department of Wildlife and Fisheries.
- No activities will be allowed during the hunting season unless approved by the Department.
- This tract is located within the emerging Atchafalaya Delta. No activities will be allowed on emergent islands, sub aerial mudflats or vegetated wetlands. Drilling will be restricted to passes and open water bays. The Louisiana Department of Wildlife and Fisheries (LDWF) shall have discretion to determine access routes. In the event that LDWF approves of dredging for access LDWF shall have discretion to require hydraulic or spray dredging.
- Prior to submitting application for wetland permits to Federal and State permitting agencies the leaseholder shall coordinate project details with the Department of Wildlife and Fisheries. Contact person for the Department will be Mike Windham at (504)284-5268.

Additionally, the Department will require a minimum bonus of \$350.00 per acre and a minimum royalty of 25%.

NOTE: The above described tract may be in the vicinity of existing shell reefs where drilling and dredging operations must be conducted in strict conformity with the regulations adopted by the Louisiana Department of Wildlife and Fisheries and/or the U.S. Corps of Engineers, U.S. Army.

NOTE: The State of Louisiana does hereby reserve, and this lease shall be subject to, the imprescriptible right of surface use in the nature of a servitude in favor of the Department of Natural Resources, including its Offices and Commissions, for the sole purpose of implementing, constructing, servicing and maintaining approved coastal zone management and/or restoration projects. Utilization of any and all rights derived under this lease by the mineral lessee, its agents, successors or assigns, shall not interfere with nor hinder the reasonable surface use by the Department of Natural Resources, its Offices or Commissions, as herein above reserved.

NOTE: This tract is located in an area designated by the Louisiana Legislature or the Wildlife and Fisheries Commission as a Public Oyster Seed Ground, Reservation, or area of Calcasieu or Sabine Lake. Proposed projects occurring in these areas will be evaluated on a case by case basis by Louisiana Department of Wildlife & Fisheries. Modifications to proposed project features including, but not limited to, access routes, well sites, flowlines, and appurtenant structures maybe required by the Louisiana Department of Wildlife and Fisheries. In addition, compensatory mitigation will be required to offset unavoidable habitat impacts.

Applicant: LESLIE M. COOPER

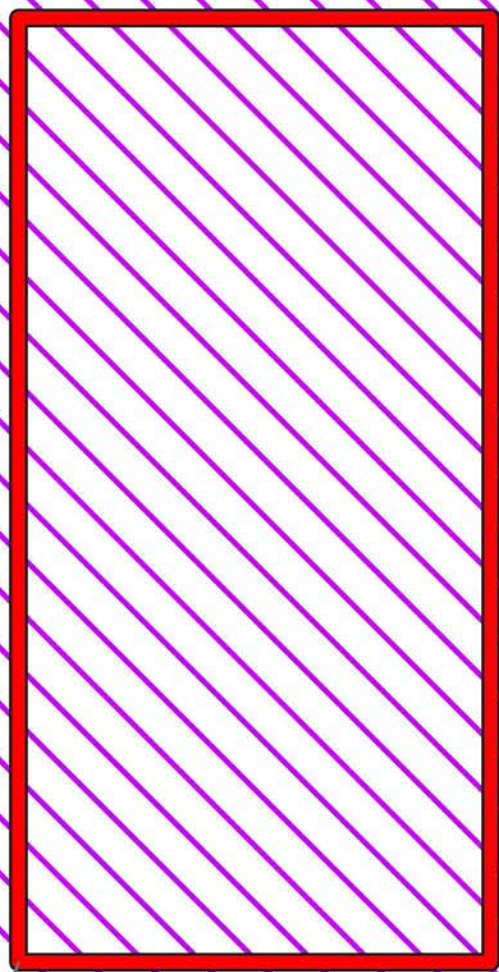
Bidder	Cash Payment	Price/Acre	Rental	Oil	Gas	Other

Legend
13070041
Wildlife

ATCHAFALAYA DELTA WMA

ST MARY PARISH

ATCHAFALAYA BAY



P.O.B.

0 3,000 Feet

TRACT 43381 - St. Mary Parish, Louisiana

A portion of all lands located above the mean high water mark, together with lands now or formerly constituting the beds and bottoms of any water body of whatever description or nature belonging to the State of Louisiana which is now located within the boundaries of the Atchafalaya Delta Wildlife Management Area and not presently under mineral lease by the State of Louisiana on July 10, 2013, and more particularly located as follows: Beginning at a point within Block 16, Eugene Island Area, Revised, having Coordinates of X = 1,975,252.00 and Y = 251,037.00; thence East 18,480.00 feet to a point having Coordinates of X = 1,993,732.00 and Y = 251,037.00; thence South 6,597.00 feet to a point having Coordinates of X = 1,993,732.00 and Y = 244,440.00; thence West 7,499.53 feet a point on the South boundary of the Atchafalaya Delta Wildlife Management Area having Coordinates of X = 1,986,232.47 and Y = 244,440.00; thence Northwesterly, on a straight line, 11,630.77 feet along the South boundary of said Atchafalaya Delta Wildlife Management Area to a point having Coordinates of X = 1,975,252.00 and Y = 248,274.58; thence North 2,762.42 feet to the point of beginning, **LESS AND EXCEPT** that portion, if any, of the above described tract which may lie outside of the boundary of the Atchafalaya Delta Wildlife Management Area, containing approximately **2,315.42 acres**, all as more particularly outlined on a plat on file in the Office of Mineral Resources, Department of Natural Resources. All bearings, distances and coordinates are based on Louisiana Coordinate System of 1927, (South Zone).

NOTE: The above description of the Tract nominated for lease has been provided and corrected, where required, exclusively by the nomination party. Any mineral lease selected from this Tract and awarded by the Louisiana State Mineral and Energy Board shall be without warranty of any kind, either express, implied, or statutory, including, but not limited to, the implied warranties of merchantability and fitness for a particular purpose. Should the mineral lease awarded by the Louisiana State Mineral and Energy Board be subsequently modified, cancelled or abrogated due to the existence of conflicting leases, operating agreements, private claims or other future obligations or conditions which may affect all or any portion of the leased Tract, it shall not relieve the Lessee of the obligation to pay any bonus due thereon to the Louisiana State Mineral and Energy Board, nor shall the Louisiana State Mineral and Energy Board be obligated to refund any consideration paid by the Lessor prior to such modification, cancellation, or abrogation, including, but not limited to, bonuses, rentals and royalties.

NOTE: The mineral lease is located in the Atchafalaya Delta WMA under the jurisdiction of the Louisiana Department of Wildlife and Fisheries which has promulgated rules and regulations for the protection of game and wildlife on the aforesaid Tract and, therefore, shall be subject to said rules and regulations, a copy of which shall be attached to the mineral leases. In addition to the specific rules and regulations applicable, the following shall apply regarding operations under this mineral lease:

- No activities will be allowed without written authorization of the Louisiana Department of Wildlife and Fisheries.
- Proposed projects will be evaluated on a case by case basis. Modifications to proposed project features including but not limited to access routes, spoil placement, well sites, flowlines and appurtenant structures may be required by the Department of Wildlife and Fisheries.
- Compliance with the Atchafalaya Delta WMA regulations will be required unless otherwise specified by the Department of Wildlife and Fisheries.
- Compensatory mitigation will be required to offset unavoidable wetland impacts.
- Compensation and/or oyster seed ground surveys may be required by the Department for potential impacts to productive oyster seed grounds located within the management area.
- Removal of all structures, facilities and equipment will be required within 120 days of abandonment unless otherwise agreed to in writing by the Louisiana Department of Wildlife and Fisheries.
- No activities will be allowed during the hunting season unless approved by the Department.
- This tract is located within the emerging Atchafalaya Delta. No activities will be allowed on emergent islands, sub aerial mudflats or vegetated wetlands. Drilling will be restricted to passes and open water bays. The Louisiana Department of Wildlife and Fisheries (LDWF) shall have discretion to determine access routes. In the event that LDWF approves of dredging for access LDWF shall have discretion to require hydraulic or spray dredging.
- Prior to submitting application for wetland permits to Federal and State permitting agencies the leaseholder shall coordinate project details with the Department of Wildlife and Fisheries. Contact person for the Department will be Mike Windham at (504)284-5268.

Additionally, the Department will require a minimum bonus of \$350.00 per acre and a minimum royalty of 25%.

NOTE: The above described tract may be in the vicinity of existing shell reefs where drilling and dredging operations must be conducted in strict conformity with the regulations adopted by the Louisiana Department of Wildlife and Fisheries and/or the U.S. Corps of Engineers, U.S. Army.

NOTE: The State of Louisiana does hereby reserve, and this lease shall be subject to, the imprescriptible right of surface use in the nature of a servitude in favor of the Department of Natural Resources, including its Offices and Commissions, for the sole purpose of implementing, constructing, servicing and maintaining approved coastal zone management

and/or restoration projects. Utilization of any and all rights derived under this lease by the mineral lessee, its agents, successors or assigns, shall not interfere with nor hinder the reasonable surface use by the Department of Natural Resources, its Offices or Commissions, as herein above reserved.

NOTE: It appears, according to our records, that a portion of this Tract is located within the restrictive safety fairway area as set out by the Corps of Engineers, U.S. Army and/or the restrictive anchorage area as set out by the U.S. Coast Guard.

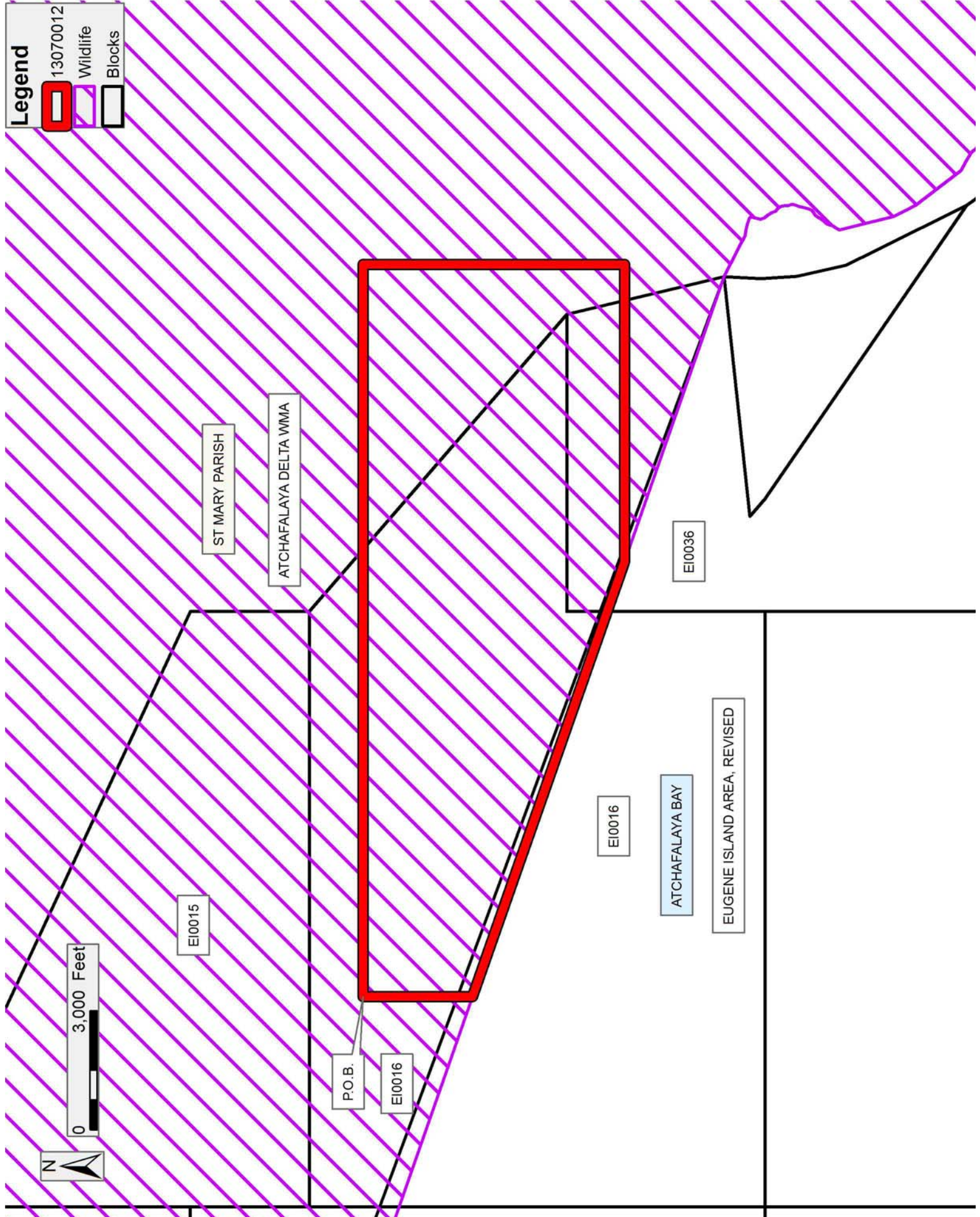
NOTE: This tract is located in an area designated by the Louisiana Legislature or the Wildlife and Fisheries Commission as a Public Oyster Seed Ground, Reservation, or area of Calcasieu or Sabine Lake. Proposed projects occurring in these areas will be evaluated on a case by case basis by Louisiana Department of Wildlife & Fisheries. Modifications to proposed project features including, but not limited to, access routes, well sites, flowlines, and appurtenant structures maybe required by the Louisiana Department of Wildlife and Fisheries. In addition, compensatory mitigation will be required to offset unavoidable habitat impacts.

Applicant: LESLIE M. COOPER

Bidder	Cash Payment	Price/Acre	Rental	Oil	Gas	Other

Legend

- 13070012
- Wildlife
- Blocks



TRACT 43382 - St. Mary and Terrebonne Parishes, Louisiana

A portion of all lands located above the mean high water mark, together with lands now or formerly constituting the beds and bottoms of any water body of whatever description or nature belonging to the State of Louisiana which is now located within the boundaries of the Atchafalaya Delta Wildlife Management Area and not presently under mineral lease by the State of Louisiana on July 10, 2013, and more particularly located as follows: Beginning at a point within the Atchafalaya Delta Wildlife Management Area, having Coordinates of X = 1,997,168.00 and Y = 245,188.00; thence East 10,907.67 feet to a point having Coordinates of X = 2,008,075.67 and Y = 245,188.00; thence South 7,740.00 feet to a point having Coordinates of X = 2,008,075.67 and Y = 237,448.00; thence West 10,907.67 feet to a point having Coordinates of X = 1,997,168.00 and Y = 237,448.00; thence North 7,740.00 feet to the point of beginning, containing approximately **1,938.14 acres**, all as more particularly outlined on a plat on file in the Office of Mineral Resources, Department of Natural Resources. All bearings, distances and coordinates are based on Louisiana Coordinate System of 1927, (South Zone).

NOTE: The above description of the Tract nominated for lease has been provided and corrected, where required, exclusively by the nomination party. Any mineral lease selected from this Tract and awarded by the Louisiana State Mineral and Energy Board shall be without warranty of any kind, either express, implied, or statutory, including, but not limited to, the implied warranties of merchantability and fitness for a particular purpose. Should the mineral lease awarded by the Louisiana State Mineral and Energy Board be subsequently modified, cancelled or abrogated due to the existence of conflicting leases, operating agreements, private claims or other future obligations or conditions which may affect all or any portion of the leased Tract, it shall not relieve the Lessee of the obligation to pay any bonus due thereon to the Louisiana State Mineral and Energy Board, nor shall the Louisiana State Mineral and Energy Board be obligated to refund any consideration paid by the Lessor prior to such modification, cancellation, or abrogation, including, but not limited to, bonuses, rentals and royalties.

NOTE: The mineral lease is located in the Atchafalaya Delta WMA under the jurisdiction of the Louisiana Department of Wildlife and Fisheries which has promulgated rules and regulations for the protection of game and wildlife on the aforesaid Tract and, therefore, shall be subject to said rules and regulations, a copy of which shall be attached to the mineral leases. In addition to the specific rules and regulations applicable, the following shall apply regarding operations under this mineral lease:

- No activities will be allowed without written authorization of the Louisiana Department of Wildlife and Fisheries.
- Proposed projects will be evaluated on a case by case basis. Modifications to proposed project features including but not limited to access routes, spoil placement, well sites, flowlines and

appurtenant structures may be required by the Department of Wildlife and Fisheries.

- Compliance with the Atchafalaya Delta WMA regulations will be required unless otherwise specified by the Department of Wildlife and Fisheries.
- Compensatory mitigation will be required to offset unavoidable wetland impacts.
- Compensation and/or oyster seed ground surveys may be required by the Department for potential impacts to productive oyster seed grounds located within the management area.
- Removal of all structures, facilities and equipment will be required within 120 days of abandonment unless otherwise agreed to in writing by the Louisiana Department of Wildlife and Fisheries.
- No activities will be allowed during the hunting season unless approved by the Department.
- This tract is located within the emerging Atchafalaya Delta. No activities will be allowed on emergent islands, sub aerial mudflats or vegetated wetlands. Drilling will be restricted to passes and open water bays. The Louisiana Department of Wildlife and Fisheries (LDWF) shall have discretion to determine access routes. In the event that LDWF approves of dredging for access LDWF shall have discretion to require hydraulic or spray dredging.
- Prior to submitting application for wetland permits to Federal and State permitting agencies the leaseholder shall coordinate project details with the Department of Wildlife and Fisheries. Contact person for the Department will be Mike Windham at (504)284-5268.

Additionally, the Department will require a minimum bonus of \$350.00 per acre and a minimum royalty of 25%.

NOTE: The above described tract may be in the vicinity of existing shell reefs where drilling and dredging operations must be conducted in strict conformity with the regulations adopted by the Louisiana Department of Wildlife and Fisheries and/or the U.S. Corps of Engineers, U.S. Army.

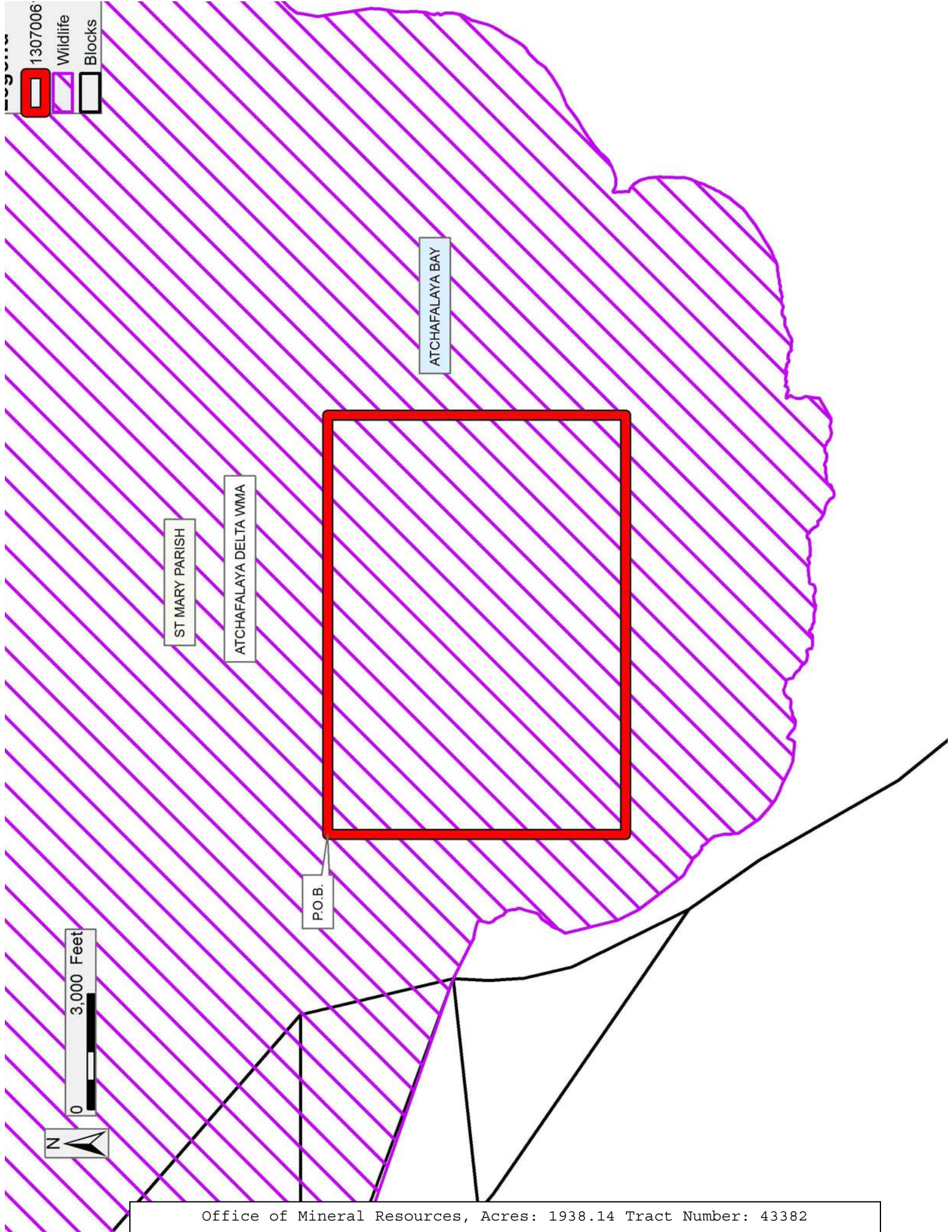
NOTE: The State of Louisiana does hereby reserve, and this lease shall be subject to, the imprescriptible right of surface use in the nature of a servitude in favor of the Department of Natural Resources, including its Offices and Commissions, for the sole purpose of implementing, constructing, servicing and maintaining approved coastal zone management and/or restoration projects. Utilization of any and all rights derived under this lease by the mineral lessee, its agents, successors or assigns, shall not interfere with nor hinder the reasonable surface use by the Department of Natural Resources, its Offices or Commissions, as herein above reserved.

NOTE: This tract is located in an area designated by the Louisiana Legislature or the Wildlife and Fisheries Commission as a Public Oyster Seed Ground, Reservation, or area of Calcasieu or Sabine Lake. Proposed projects occurring in these areas will be evaluated on a case by case basis by Louisiana Department of Wildlife & Fisheries. Modifications to proposed project features including, but not limited to, access routes, well sites, flowlines, and appurtenant structures maybe required by the Louisiana Department of Wildlife and Fisheries. In addition, compensatory mitigation will be required to offset unavoidable habitat impacts.

Applicant: LESLIE M. COOPER

Bidder	Cash Payment	Price/Acre	Rental	Oil	Gas	Other

1307006
Wildlife
Blocks



TRACT 43383 - St. Mary and Terrebonne Parishes, Louisiana

A portion of all lands located above the mean high water mark, together with lands now or formerly constituting the beds and bottoms of any water body of whatever description or nature belonging to the State of Louisiana which is now located within the boundaries of the Atchafalaya Delta Wildlife Management Area and not presently under mineral lease by the State of Louisiana on July 10, 2013, and more particularly located as follows: Beginning at a point having Coordinates of X = 2,008,075.67 and Y = 245,188.00; thence East approximately 10,395 feet to a point of intersection with the Eastern boundary of the Atchafalaya Delta Wildlife Management Area having a Coordinate of Y = 245,188.00; thence Southwesterly and Southerly along the meanders of the boundary of said Atchafalaya Delta Wildlife Management Area to a point of intersection with an East West line having a Coordinate of Y = 237,448.00; thence West approximately 5,810 feet to a point having Coordinates of X = 2,008,075.67 and Y = 237,448.00; thence North 7,740.00 feet to the point of beginning, containing approximately **1,681 acres**, all as more particularly outlined on a plat on file in the Office of Mineral Resources, Department of Natural Resources. All bearings, distances and coordinates are based on Louisiana Coordinate System of 1927, (South Zone).

NOTE: The above description of the Tract nominated for lease has been provided and corrected, where required, exclusively by the nomination party. Any mineral lease selected from this Tract and awarded by the Louisiana State Mineral and Energy Board shall be without warranty of any kind, either express, implied, or statutory, including, but not limited to, the implied warranties of merchantability and fitness for a particular purpose. Should the mineral lease awarded by the Louisiana State Mineral and Energy Board be subsequently modified, cancelled or abrogated due to the existence of conflicting leases, operating agreements, private claims or other future obligations or conditions which may affect all or any portion of the leased Tract, it shall not relieve the Lessee of the obligation to pay any bonus due thereon to the Louisiana State Mineral and Energy Board, nor shall the Louisiana State Mineral and Energy Board be obligated to refund any consideration paid by the Lessor prior to such modification, cancellation, or abrogation, including, but not limited to, bonuses, rentals and royalties.

NOTE: The mineral lease is located in the Atchafalaya Delta WMA under the jurisdiction of the Louisiana Department of Wildlife and Fisheries which has promulgated rules and regulations for the protection of game and wildlife on the aforesaid Tract and, therefore, shall be subject to said rules and regulations, a copy of which shall be attached to the mineral leases. In addition to the specific rules and regulations applicable, the following shall apply regarding operations under this mineral lease:

- No activities will be allowed without written authorization of the Louisiana Department of Wildlife and Fisheries.

- Proposed projects will be evaluated on a case by case basis. Modifications to proposed project features including but not limited to access routes, spoil placement, well sites, flowlines and appurtenant structures may be required by the Department of Wildlife and Fisheries.
- Compliance with the Atchafalaya Delta WMA regulations will be required unless otherwise specified by the Department of Wildlife and Fisheries.
- Compensatory mitigation will be required to offset unavoidable wetland impacts.
- Compensation and/or oyster seed ground surveys may be required by the Department for potential impacts to productive oyster seed grounds located within the management area.
- Removal of all structures, facilities and equipment will be required within 120 days of abandonment unless otherwise agreed to in writing by the Louisiana Department of Wildlife and Fisheries.
- No activities will be allowed during the hunting season unless approved by the Department.
- This tract is located within the emerging Atchafalaya Delta. No activities will be allowed on emergent islands, sub aerial mudflats or vegetated wetlands. Drilling will be restricted to passes and open water bays. The Louisiana Department of Wildlife and Fisheries (LDWF) shall have discretion to determine access routes. In the event that LDWF approves of dredging for access LDWF shall have discretion to require hydraulic or spray dredging.
- Prior to submitting application for wetland permits to Federal and State permitting agencies the leaseholder shall coordinate project details with the Department of Wildlife and Fisheries. Contact person for the Department will be Mike Windham at (504)284-5268.

Additionally, the Department will require a minimum bonus of \$350.00 per acre and a minimum royalty of 25%.

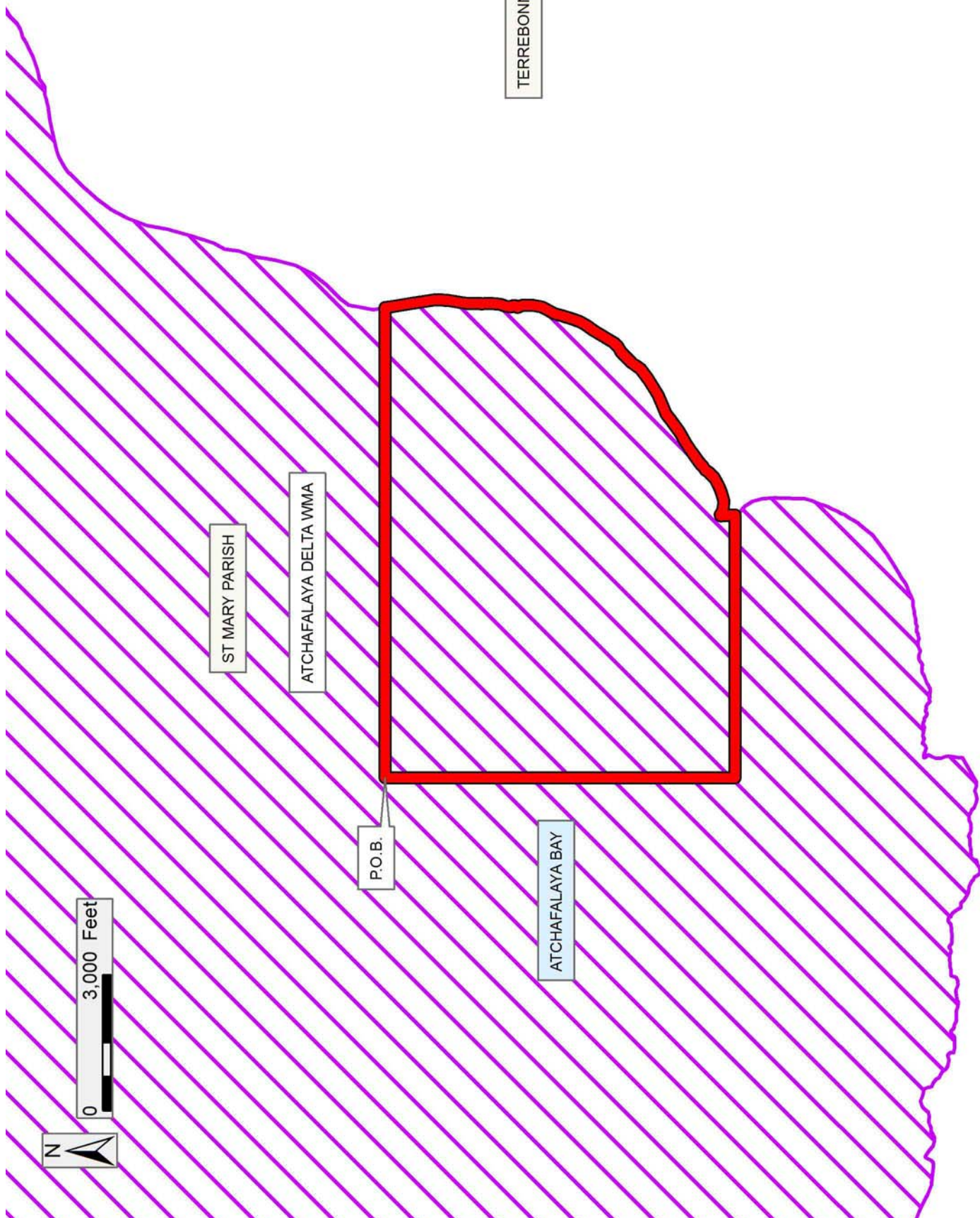
NOTE: The State of Louisiana does hereby reserve, and this lease shall be subject to, the imprescriptible right of surface use in the nature of a servitude in favor of the Department of Natural Resources, including its Offices and Commissions, for the sole purpose of implementing, constructing, servicing and maintaining approved coastal zone management and/or restoration projects. Utilization of any and all rights derived under this lease by the mineral lessee, its agents, successors or assigns, shall not interfere with nor hinder the reasonable surface use by the Department of Natural Resources, its Offices or Commissions, as herein above reserved.

NOTE: This tract is located in an area designated by the Louisiana Legislature or the Wildlife and Fisheries Commission as a Public Oyster Seed Ground, Reservation, or area of Calcasieu or Sabine Lake. Proposed

projects occurring in these areas will be evaluated on a case by case basis by Louisiana Department of Wildlife & Fisheries. Modifications to proposed project features including, but not limited to, access routes, well sites, flowlines, and appurtenant structures maybe required by the Louisiana Department of Wildlife and Fisheries. In addition, compensatory mitigation will be required to offset unavoidable habitat impacts.

Applicant: LESLIE M. COOPER

Bidder	Cash Payment	Price/Acre	Rental	Oil	Gas	Other



TRACT 43384 - St. Mary and Terrebonne Parishes, Louisiana

A portion of all lands located above the mean high water mark, together with lands now or formerly constituting the beds and bottoms of any water body of whatever description or nature belonging to the State of Louisiana which is now located within the boundaries of the Atchafalaya Delta Wildlife Management Area and not presently under mineral lease by the State of Louisiana on July 10, 2013, and more particularly located as follows: Beginning at a point having Coordinates of X = 1,993,732.00 and Y = 245,188.00; thence East 3,436.00 feet to a point having Coordinates of X = 1,997,168.00 and Y = 245,188.00; thence South approximately 10,273 feet to a point on the Southwest boundary of the Atchafalaya Delta Wildlife Management Area having a Coordinate of X = 1,997,168.00; thence Northwesterly along the Southwest boundary of the said Atchafalaya Delta Wildlife Management Area to a point on the Louisiana Coastline, as decreed by the Supreme Court of the United States, as determined by a Special Master appointed therein, in litigation styled *United States v. State of Louisiana et al No. 9 Original*, in 1975, having Coordinates of X = 1,993,420 and Y = 241,930; thence North 70 degrees 45 minutes 00 seconds West 7,613.19 feet along the Southwest boundary of the said Atchafalaya Delta Wildlife Management Area to a point having Coordinates of X = 1,986,232.47 and Y = 244,440.00; thence East 7,499.53 feet to a point having Coordinates of X = 1,993,732.00 and Y = 244,440.00; thence North 748.00 feet to the point of beginning, containing approximately **791 acres**, all as more particularly outlined on a plat on file in the Office of Mineral Resources, Department of Natural Resources. All bearings, distances and coordinates are based on Louisiana Coordinate System of 1927, (South Zone).

NOTE: The above description of the Tract nominated for lease has been provided and corrected, where required, exclusively by the nomination party. Any mineral lease selected from this Tract and awarded by the Louisiana State Mineral and Energy Board shall be without warranty of any kind, either express, implied, or statutory, including, but not limited to, the implied warranties of merchantability and fitness for a particular purpose. Should the mineral lease awarded by the Louisiana State Mineral and Energy Board be subsequently modified, cancelled or abrogated due to the existence of conflicting leases, operating agreements, private claims or other future obligations or conditions which may affect all or any portion of the leased Tract, it shall not relieve the Lessee of the obligation to pay any bonus due thereon to the Louisiana State Mineral and Energy Board, nor shall the Louisiana State Mineral and Energy Board be obligated to refund any consideration paid by the Lessor prior to such modification, cancellation, or abrogation, including, but not limited to, bonuses, rentals and royalties.

NOTE: The mineral lease is located in the Atchafalaya Delta WMA under the jurisdiction of the Louisiana Department of Wildlife and Fisheries which has promulgated rules and regulations for the protection of game and wildlife on the aforesaid Tract and, therefore, shall be subject to said

rules and regulations, a copy of which shall be attached to the mineral leases. In addition to the specific rules and regulations applicable, the following shall apply regarding operations under this mineral lease:

- No activities will be allowed without written authorization of the Louisiana Department of Wildlife and Fisheries.
- Proposed projects will be evaluated on a case by case basis. Modifications to proposed project features including but not limited to access routes, spoil placement, well sites, flowlines and appurtenant structures may be required by the Department of Wildlife and Fisheries.
- Compliance with the Atchafalaya Delta WMA regulations will be required unless otherwise specified by the Department of Wildlife and Fisheries.
- Compensatory mitigation will be required to offset unavoidable wetland impacts.
- Compensation and/or oyster seed ground surveys may be required by the Department for potential impacts to productive oyster seed grounds located within the management area.
- Removal of all structures, facilities and equipment will be required within 120 days of abandonment unless otherwise agreed to in writing by the Louisiana Department of Wildlife and Fisheries.
- No activities will be allowed during the hunting season unless approved by the Department.
- This tract is located within the emerging Atchafalaya Delta. No activities will be allowed on emergent islands, sub aerial mudflats or vegetated wetlands. Drilling will be restricted to passes and open water bays. The Louisiana Department of Wildlife and Fisheries (LDWF) shall have discretion to determine access routes. In the event that LDWF approves of dredging for access LDWF shall have discretion to require hydraulic or spray dredging.
- Prior to submitting application for wetland permits to Federal and State permitting agencies the leaseholder shall coordinate project details with the Department of Wildlife and Fisheries. Contact person for the Department will be Mike Windham at (504)284-5268.

Additionally, the Department will require a minimum bonus of \$350.00 per acre and a minimum royalty of 25%.

NOTE: The above described tract may be in the vicinity of existing shell reefs where drilling and dredging operations must be conducted in strict conformity with the regulations adopted by the Louisiana Department of Wildlife and Fisheries and/or the U.S. Corps of Engineers, U.S. Army.

NOTE: The State of Louisiana does hereby reserve, and this lease shall be subject to, the imprescriptible right of surface use in the nature of a

servitude in favor of the Department of Natural Resources, including its Offices and Commissions, for the sole purpose of implementing, constructing, servicing and maintaining approved coastal zone management and/or restoration projects. Utilization of any and all rights derived under this lease by the mineral lessee, its agents, successors or assigns, shall not interfere with nor hinder the reasonable surface use by the Department of Natural Resources, its Offices or Commissions, as herein above reserved.

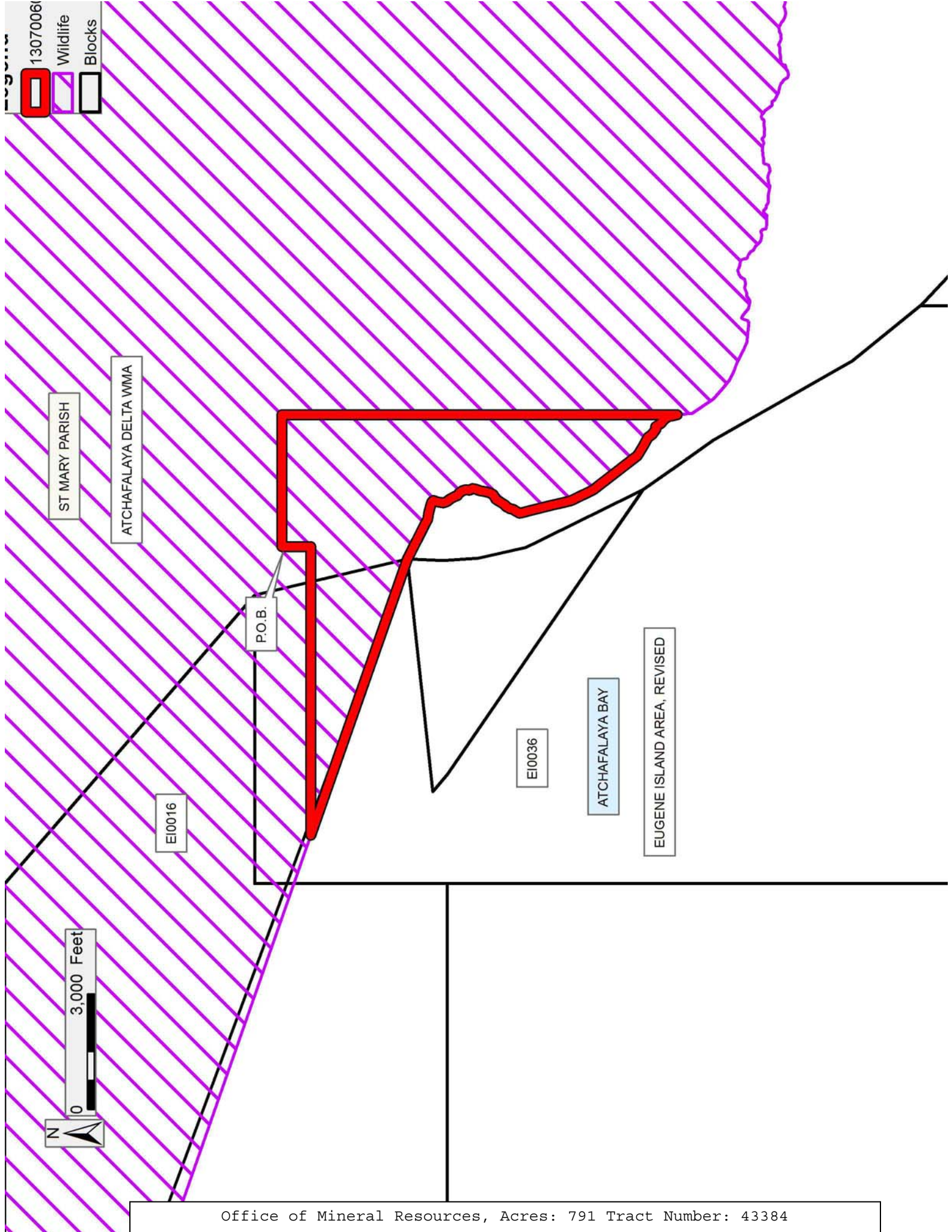
NOTE: This tract is located in an area designated by the Louisiana Legislature or the Wildlife and Fisheries Commission as a Public Oyster Seed Ground, Reservation, or area of Calcasieu or Sabine Lake. Proposed projects occurring in these areas will be evaluated on a case by case basis by Louisiana Department of Wildlife & Fisheries. Modifications to proposed project features including, but not limited to, access routes, well sites, flowlines, and appurtenant structures maybe required by the Louisiana Department of Wildlife and Fisheries. In addition, compensatory mitigation will be required to offset unavoidable habitat impacts.

Applicant: LESLIE M. COOPER

Bidder	Cash Payment	Price/Acre	Rental	Oil	Gas	Other

Legend

- 13070061
- Wildlife
- Blocks



TRACT 43385 - St. Mary and Terrebonne Parishes, Louisiana

A portion of all lands located above the mean high water mark, together with lands now or formerly constituting the beds and bottoms of any water body of whatever description or nature belonging to the State of Louisiana which is now located within the boundaries of the Atchafalaya Delta Wildlife Management Area and not presently under mineral lease by the State of Louisiana on July 10, 2013, and more particularly located as follows: Beginning at a point within the Atchafalaya Delta Wildlife Management Area, having Coordinates of X = 1,997,168.00 and Y = 237,448.00; thence East approximately 16,716 feet to a point on the Southeast boundary of the Atchafalaya Delta Wildlife Management Area having a Coordinate of Y = 237,448.00; thence Southerly, Southwesterly and Westerly along the boundary of the Atchafalaya Delta Wildlife Management Area to the point of intersection with a North/South line having a Coordinate of X = 1,997,168.00; thence North approximately 2,540 feet to the point of beginning, containing approximately **1,704 acres**, all as more particularly outlined on a plat on file in the Office of Mineral Resources, Department of Natural Resources. All bearings, distances and coordinates are based on Louisiana Coordinate System of 1927, (South Zone).

NOTE: The above description of the Tract nominated for lease has been provided and corrected, where required, exclusively by the nomination party. Any mineral lease selected from this Tract and awarded by the Louisiana State Mineral and Energy Board shall be without warranty of any kind, either express, implied, or statutory, including, but not limited to, the implied warranties of merchantability and fitness for a particular purpose. Should the mineral lease awarded by the Louisiana State Mineral and Energy Board be subsequently modified, cancelled or abrogated due to the existence of conflicting leases, operating agreements, private claims or other future obligations or conditions which may affect all or any portion of the leased Tract, it shall not relieve the Lessee of the obligation to pay any bonus due thereon to the Louisiana State Mineral and Energy Board, nor shall the Louisiana State Mineral and Energy Board be obligated to refund any consideration paid by the Lessor prior to such modification, cancellation, or abrogation, including, but not limited to, bonuses, rentals and royalties.

NOTE: The mineral lease is located in the Atchafalaya Delta WMA under the jurisdiction of the Louisiana Department of Wildlife and Fisheries which has promulgated rules and regulations for the protection of game and wildlife on the aforesaid Tract and, therefore, shall be subject to said rules and regulations, a copy of which shall be attached to the mineral leases. In addition to the specific rules and regulations applicable, the following shall apply regarding operations under this mineral lease:

- No activities will be allowed without written authorization of the Louisiana Department of Wildlife and Fisheries.

- Proposed projects will be evaluated on a case by case basis. Modifications to proposed project features including but not limited to access routes, spoil placement, well sites, flowlines and appurtenant structures may be required by the Department of Wildlife and Fisheries.
- Compliance with the Atchafalaya Delta WMA regulations will be required unless otherwise specified by the Department of Wildlife and Fisheries.
- Compensatory mitigation will be required to offset unavoidable wetland impacts.
- Compensation and/or oyster seed ground surveys may be required by the Department for potential impacts to productive oyster seed grounds located within the management area.
- Removal of all structures, facilities and equipment will be required within 120 days of abandonment unless otherwise agreed to in writing by the Louisiana Department of Wildlife and Fisheries.
- No activities will be allowed during the hunting season unless approved by the Department.
- This tract is located within the emerging Atchafalaya Delta. No activities will be allowed on emergent islands, sub aerial mudflats or vegetated wetlands. Drilling will be restricted to passes and open water bays. The Louisiana Department of Wildlife and Fisheries (LDWF) shall have discretion to determine access routes. In the event that LDWF approves of dredging for access LDWF shall have discretion to require hydraulic or spray dredging.
- Prior to submitting application for wetland permits to Federal and State permitting agencies the leaseholder shall coordinate project details with the Department of Wildlife and Fisheries. Contact person for the Department will be Mike Windham at (504)284-5268.

Additionally, the Department will require a minimum bonus of \$350.00 per acre and a minimum royalty of 25%.

NOTE: The above described tract may be in the vicinity of existing shell reefs where drilling and dredging operations must be conducted in strict conformity with the regulations adopted by the Louisiana Department of Wildlife and Fisheries and/or the U.S. Corps of Engineers, U.S. Army.

NOTE: The State of Louisiana does hereby reserve, and this lease shall be subject to, the imprescriptible right of surface use in the nature of a servitude in favor of the Department of Natural Resources, including its Offices and Commissions, for the sole purpose of implementing, constructing, servicing and maintaining approved coastal zone management and/or restoration projects. Utilization of any and all rights derived under this lease by the mineral lessee, its agents, successors or assigns, shall not interfere with nor hinder the reasonable surface use by the

Department of Natural Resources, its Offices or Commissions, as herein above reserved.

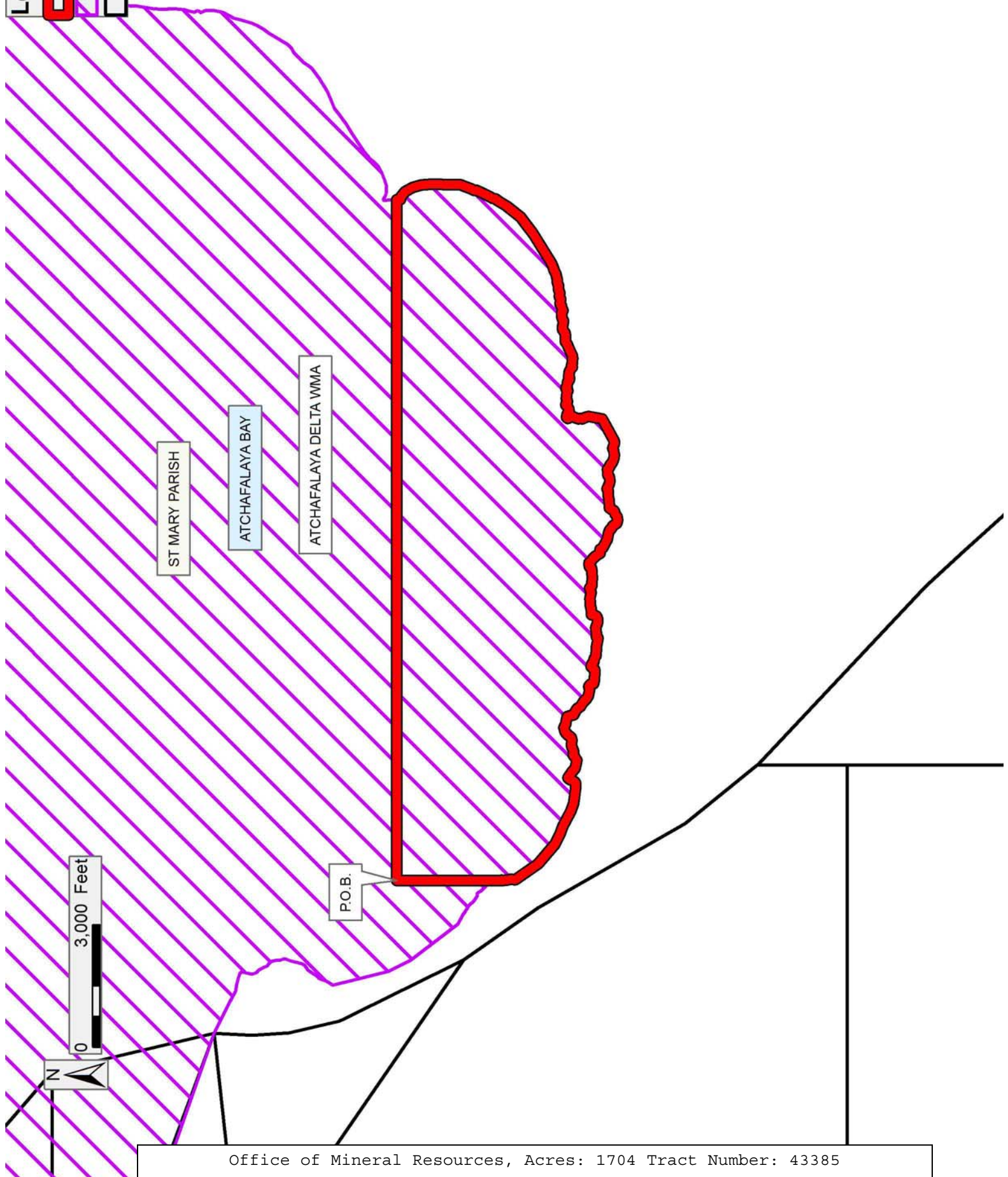
NOTE: This tract is located in an area designated by the Louisiana Legislature or the Wildlife and Fisheries Commission as a Public Oyster Seed Ground, Reservation, or area of Calcasieu or Sabine Lake. Proposed projects occurring in these areas will be evaluated on a case by case basis by Louisiana Department of Wildlife & Fisheries. Modifications to proposed project features including, but not limited to, access routes, well sites, flowlines, and appurtenant structures maybe required by the Louisiana Department of Wildlife and Fisheries. In addition, compensatory mitigation will be required to offset unavoidable habitat impacts.

Applicant: LESLIE M. COOPER

Bidder	Cash Payment	Price/Acre	Rental	Oil	Gas	Other

Legend

- 13070059
- Wildlife
- Blocks



ST MARY PARISH

ATCHAFALAYA BAY

ATCHAFALAYA DELTA WMA

P.O.B.

0 3,000 Feet

