

**TRACT 43388 - Concordia Parish, Louisiana**

All of the lands now or formerly constituting the beds and bottoms of all water bodies of every nature and description as to which title is vested in the State of Louisiana, together with all islands arising therein and other lands formed by accretion or by reliction, where allowed by law, excepting tax adjudicated lands, and not presently under mineral lease on August 14, 2013, situated in Concordia Parish, Louisiana, and more particularly described as follows: Beginning at a point having Coordinates of X = 2,337,982.00 and Y = 368,841.00; thence Northwesterly approximately 14,260 feet to a point on the Southern boundary of State Lease No. 476; thence Easterly approximately 13,300 feet along said Southern boundary of said State Lease No. 476 to its Southeast corner; thence East approximately 1,630 feet to a point having Coordinates of X = 2,344,372.00 and Y = 380,428.00; thence South 13,266.00 feet to a point having Coordinates of X = 2,344,372.00 and Y = 367,162.00; thence North 75 degrees 16 minutes 41 seconds West 6,606.90 feet to the point of beginning, (This lease includes only waterbottoms claimed and owned by the state and specifically excludes any School Indemnity land located within the above described tract), **LESS AND EXCEPT** that portion, if any, of the above described tract that may lie within the state of Mississippi, containing approximately **597 acres**, all as more particularly outlined on a plat on file in the Office of Mineral Resources, Department of Natural Resources. All bearings, distances and coordinates are based on Louisiana Coordinate System of 1927, (North or South Zone), where applicable.

NOTE: The above description of the Tract nominated for lease has been provided and corrected, where required, exclusively by the nomination party. Any mineral lease selected from this Tract and awarded by the Louisiana State Mineral and Energy Board shall be without warranty of any kind, either express, implied, or statutory, including, but not limited to, the implied warranties of merchantability and fitness for a particular purpose. Should the mineral lease awarded by the Louisiana State Mineral and Energy Board be subsequently modified, cancelled or abrogated due to the existence of conflicting leases, operating agreements, private claims or other future obligations or conditions which may affect all or any portion of the leased Tract, it shall not relieve the Lessee of the obligation to pay any bonus due thereon to the Louisiana State Mineral and Energy Board, nor shall the Louisiana State Mineral and Energy Board be obligated to refund any consideration paid by the Lessor prior to such modification, cancellation, or abrogation, including, but not limited to, bonuses, rentals and royalties.

Bidder	Cash Payment	Price/Acre	Rental	Oil	Gas	Other

--	--	--	--	--	--	--

Applicant: THEOPHILUS OIL, GAS & LAND SERVICES, LLC

13080039  
Active\_Lease:  
DOQQ2004



CONCORDIA PARISH

SL 476

T8N - R10E

LAKE ST JOHN

MISSISSIPPI RIVER

P.O.B.

0 3,000 Feet



**TRACT 43389 - Concordia Parish, Louisiana**

All of the lands now or formerly constituting the beds and bottoms of all water bodies of every nature and description as to which title is vested in the State of Louisiana, together with all islands arising therein and other lands formed by accretion or by reliction, where allowed by law, excepting tax adjudicated lands, and not presently under mineral lease on August 14, 2013, situated in Concordia Parish, Louisiana, and more particularly described as follows: Beginning at a point having Coordinates of X = 2,337,982.00 and Y = 368,841.00; thence South 75 degrees 16 minutes 41 seconds East 6,606.90 feet to a point having Coordinates of X = 2,344,372.00 and Y = 367,162.00; thence South 16,409.00 feet to a point having Coordinates of X = 2,344,372.00 and Y = 350,753.00; thence North 72 degrees 48 minutes 58 seconds West 9,849.68 feet to a point having Coordinates of X = 2,334,962.00 and Y = 353,663.00; thence North 11 degrees 15 minutes 12 seconds East 15,475.53 feet to the point of beginning, **LESS AND EXCEPT** any right, title, and interest in lands owned by and not under lease from the State of Louisiana, on behalf of the Concordia Parish School Board, situated in Section 16, Township 8 North, Range 10 East, Concordia Parish, Louisiana, contained within the above described tract, and **LESS AND EXCEPT** that portion, if any, of the above described tract that may lie within the state of Mississippi, containing approximately **614 acres**, all as more particularly outlined on a plat on file in the Office of Mineral Resources, Department of Natural Resources. All bearings, distances and coordinates are based on Louisiana Coordinate System of 1927, (North or South Zone), where applicable.

NOTE: The above description of the Tract nominated for lease has been provided and corrected, where required, exclusively by the nomination party. Any mineral lease selected from this Tract and awarded by the Louisiana State Mineral and Energy Board shall be without warranty of any kind, either express, implied, or statutory, including, but not limited to, the implied warranties of merchantability and fitness for a particular purpose. Should the mineral lease awarded by the Louisiana State Mineral and Energy Board be subsequently modified, cancelled or abrogated due to the existence of conflicting leases, operating agreements, private claims or other future obligations or conditions which may affect all or any portion of the leased Tract, it shall not relieve the Lessee of the obligation to pay any bonus due thereon to the Louisiana State Mineral and Energy Board, nor shall the Louisiana State Mineral and Energy Board be obligated to refund any consideration paid by the Lessor prior to such modification, cancellation, or abrogation, including, but not limited to, bonuses, rentals and royalties.

Applicant: THEOPHILUS OIL, GAS & LAND SERVICES, LLC

Bidder	Cash Payment	Price/Acre	Rental	Oil	Gas	Other

**Legend**  
13080040  
DOQQ2004

CONCORDIA PARISH

MISSISSIPPI RIVER

P.O.B.

T8N - R10E



**TRACT 43390 - Concordia Parish, Louisiana**

All of the lands now or formerly constituting the beds and bottoms of all water bodies of every nature and description as to which title is vested in the State of Louisiana, together with all islands arising therein and other lands formed by accretion or by reliction, where allowed by law, excepting tax adjudicated lands, and not presently under mineral lease on August 14, 2013, situated in Concordia Parish, Louisiana, and more particularly described as follows: Beginning at a point having Coordinates of X = 2,312,246.00 and Y = 360,102.00; thence South 41 degrees 26 minutes 22 seconds East 13,834.38 feet to a point having Coordinates of X = 2,321,402.00 and Y = 349,731.00; thence South 03 degrees 31 minutes 57 seconds West 6,021.44 feet to a point having Coordinates of X = 2,321,031.00 and Y = 343,721.00; thence North 47 degrees 30 minutes 48 seconds West 12,432.29 feet to a point having Coordinates of X = 2,311,863.00 and Y = 352,118.00; thence North 02 degrees 44 minutes 47 seconds East 7,993.18 feet to the point of beginning, **LESS AND EXCEPT** that portion, if any, of the above described tract that may lie within the state of Mississippi, containing approximately **54 acres**, all as more particularly outlined on a plat on file in the Office of Mineral Resources, Department of Natural Resources. All bearings, distances and coordinates are based on Louisiana Coordinate System of 1927, (North or South Zone), where applicable.

NOTE: The above description of the Tract nominated for lease has been provided and corrected, where required, exclusively by the nomination party. Any mineral lease selected from this Tract and awarded by the Louisiana State Mineral and Energy Board shall be without warranty of any kind, either express, implied, or statutory, including, but not limited to, the implied warranties of merchantability and fitness for a particular purpose. Should the mineral lease awarded by the Louisiana State Mineral and Energy Board be subsequently modified, cancelled or abrogated due to the existence of conflicting leases, operating agreements, private claims or other future obligations or conditions which may affect all or any portion of the leased Tract, it shall not relieve the Lessee of the obligation to pay any bonus due thereon to the Louisiana State Mineral and Energy Board, nor shall the Louisiana State Mineral and Energy Board be obligated to refund any consideration paid by the Lessor prior to such modification, cancellation, or abrogation, including, but not limited to, bonuses, rentals and royalties.

Applicant: THEOPHILUS OIL, GAS & LAND SERVICES, LLC

Bidder	Cash Payment	Price/Acre	Rental	Oil	Gas	Other



Legend  
13080043  
DOQQ2004

CONCORDIA PARISH

T8N - R10E

MISSISSIPPI RIVER

P.O.B.



**TRACT 43391 - Concordia Parish, Louisiana**

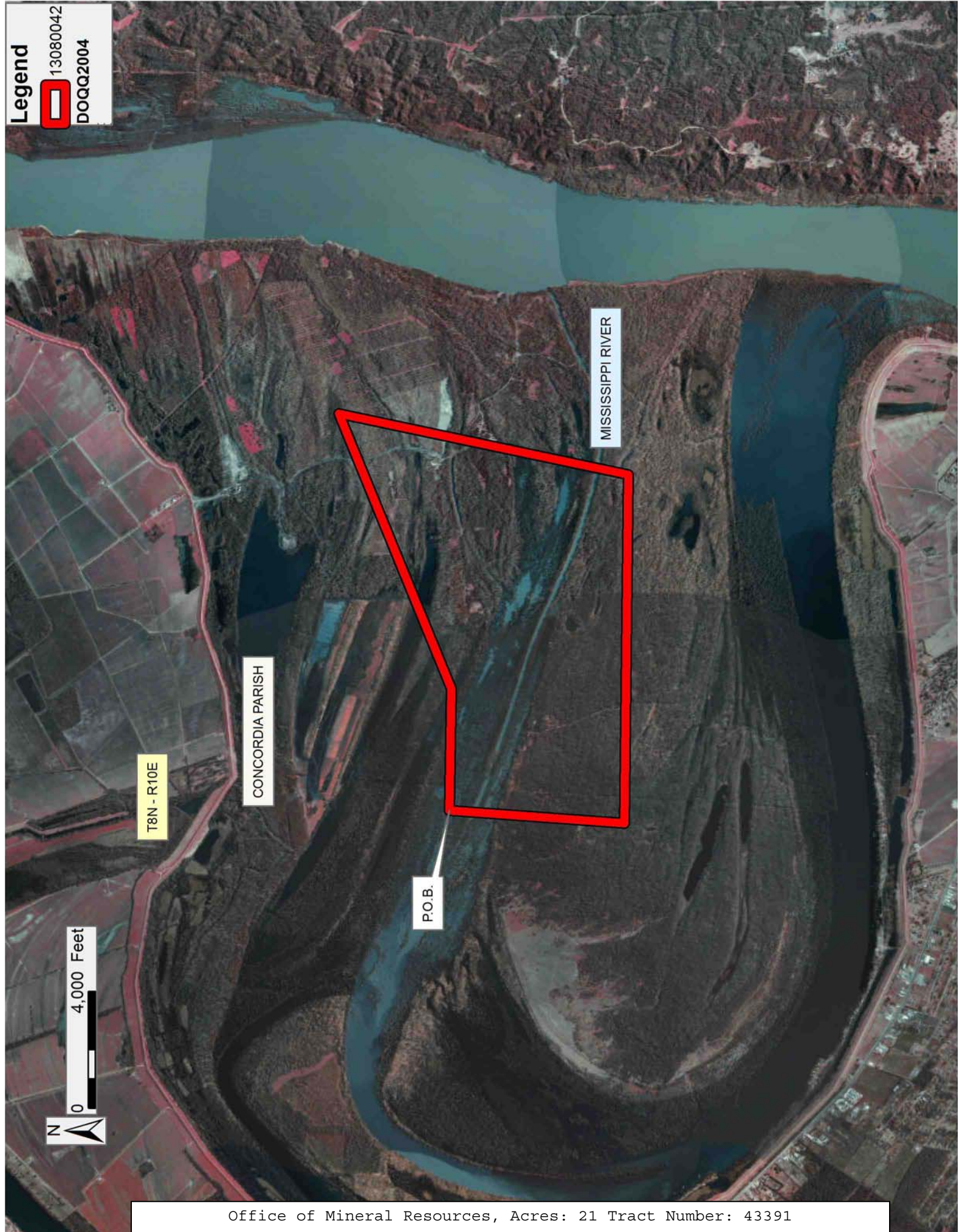
All of the lands now or formerly constituting the beds and bottoms of all water bodies of every nature and description as to which title is vested in the State of Louisiana, together with all islands arising therein and other lands formed by accretion or by reliction, where allowed by law, excepting tax adjudicated lands, and not presently under mineral lease on August 14, 2013, situated in Concordia Parish, Louisiana, and more particularly described as follows: Beginning at a point having Coordinates of X = 2,321,402.00 and Y = 349,731.00; thence South 89 degrees 44 minutes 20 seconds East 4,167.04 feet to a point having Coordinates of X = 2,325,569.00 and Y = 349,712.00; thence North 67 degrees 11 minutes 13 seconds East 10,190.14 feet to a point having Coordinates of X = 2,334,962.00 and Y = 353,663.00; thence South 11 degrees 15 minutes 12 seconds West 10,136.89 feet to a point having Coordinates of X = 2,332,983.81 and Y = 343,721.00; thence West 11,952.81 feet to a point having Coordinates of X = 2,321,031.00 and Y = 343,721.00; thence North 03 degrees 31 minutes 57 seconds East 6,021.44 feet to the point of beginning, **LESS AND EXCEPT** that portion, if any, of the above described tract that may lie within the state of Mississippi, containing approximately **21 acres**, all as more particularly outlined on a plat on file in the Office of Mineral Resources, Department of Natural Resources. All bearings, distances and coordinates are based on Louisiana Coordinate System of 1927, (North or South Zone), where applicable.

NOTE: The above description of the Tract nominated for lease has been provided and corrected, where required, exclusively by the nomination party. Any mineral lease selected from this Tract and awarded by the Louisiana State Mineral and Energy Board shall be without warranty of any kind, either express, implied, or statutory, including, but not limited to, the implied warranties of merchantability and fitness for a particular purpose. Should the mineral lease awarded by the Louisiana State Mineral and Energy Board be subsequently modified, cancelled or abrogated due to the existence of conflicting leases, operating agreements, private claims or other future obligations or conditions which may affect all or any portion of the leased Tract, it shall not relieve the Lessee of the obligation to pay any bonus due thereon to the Louisiana State Mineral and Energy Board, nor shall the Louisiana State Mineral and Energy Board be obligated to refund any consideration paid by the Lessor prior to such modification, cancellation, or abrogation, including, but not limited to, bonuses, rentals and royalties.

Applicant: THEOPHILUS OIL, GAS & LAND SERVICES, LLC

Bidder	Cash Payment	Price/Acre	Rental	Oil	Gas	Other

**Legend**  
13080042  
DOQQ2004



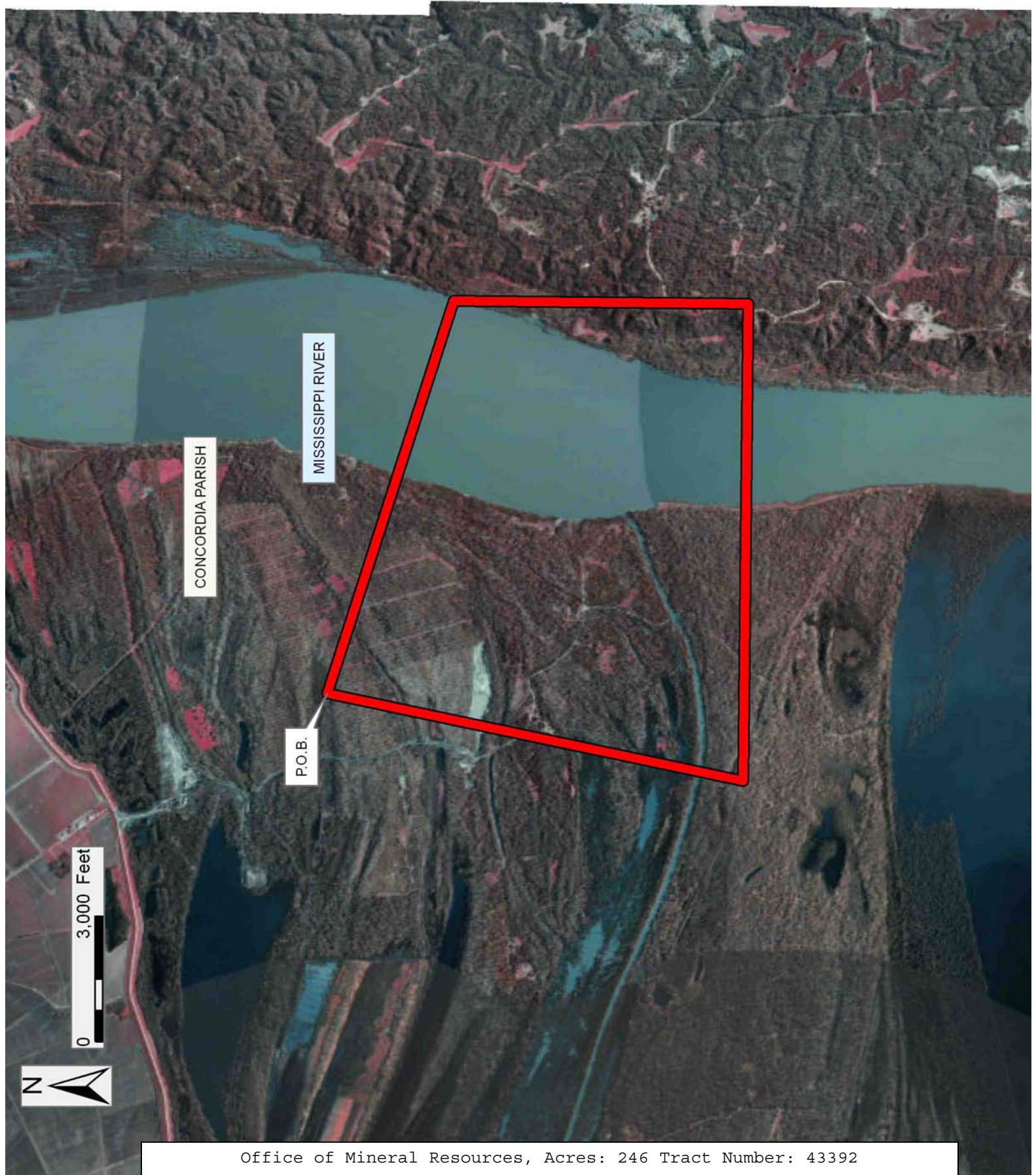
**TRACT 43392 - Concordia Parish, Louisiana**

All of the lands now or formerly constituting the beds and bottoms of all water bodies of every nature and description as to which title is vested in the State of Louisiana, together with all islands arising therein and other lands formed by accretion or by reliction, where allowed by law, excepting tax adjudicated lands, and not presently under mineral lease on August 14, 2013, situated in Concordia Parish, Louisiana, and more particularly described as follows: Beginning at a point having Coordinates of X = 2,334,962.00 and Y = 353,663.00; thence South 72 degrees 48 minutes 58 seconds East 9,849.68 feet to a point having Coordinates of X = 2,344,372.00 and Y = 350,753.00; thence South 7,032.00 feet to a point having Coordinates of X = 2,344,372.00 and Y = 343,721.00; thence West 11,388.19 feet to a point having Coordinates of X = 2,332,983.81 and Y = 343,721.00; thence North 11 degrees 15 minutes 12 seconds East 10,136.89 feet to the point of beginning, **LESS AND EXCEPT** that portion, if any, of the above described tract that may lie within the state of Mississippi, containing approximately **246 acres**, all as more particularly outlined on a plat on file in the Office of Mineral Resources, Department of Natural Resources. All bearings, distances and coordinates are based on Louisiana Coordinate System of 1927, (North or South Zone), where applicable.

NOTE: The above description of the Tract nominated for lease has been provided and corrected, where required, exclusively by the nomination party. Any mineral lease selected from this Tract and awarded by the Louisiana State Mineral and Energy Board shall be without warranty of any kind, either express, implied, or statutory, including, but not limited to, the implied warranties of merchantability and fitness for a particular purpose. Should the mineral lease awarded by the Louisiana State Mineral and Energy Board be subsequently modified, cancelled or abrogated due to the existence of conflicting leases, operating agreements, private claims or other future obligations or conditions which may affect all or any portion of the leased Tract, it shall not relieve the Lessee of the obligation to pay any bonus due thereon to the Louisiana State Mineral and Energy Board, nor shall the Louisiana State Mineral and Energy Board be obligated to refund any consideration paid by the Lessor prior to such modification, cancellation, or abrogation, including, but not limited to, bonuses, rentals and royalties.

Bidder	Cash Payment	Price/Acre	Rental	Oil	Gas	Other

Applicant: THEOPHILUS OIL, GAS & LAND SERVICES, LLC



**TRACT 43393 - Vernon Parish, Louisiana**

All of the lands now or formerly constituting the beds and bottoms of all water bodies of every nature and description the title of which vests in the State of Louisiana, together with all islands arising therein and other lands formed by accretion or by reliction, where allowed by law, excepting tax adjudicated lands, and not presently under mineral lease on August 14, 2013, situated in Vernon Parish, Louisiana, and more particularly described as follows: Beginning at a point having Coordinates of X = 1,665,570.00 and Y = 107,210.00; thence East 18,480.00 feet to a point having Coordinates of X = 1,684,050.00 and Y = 107,210.00; thence South 8,545.15 feet to the Northeast corner of State Lease No. 20292, as amended, having Coordinates of X = 1,684,050.00 and Y = 98,664.85; thence along the North and West boundary of said State Lease No. 20292, as amended, as follows: North 89 degrees 24 minutes 16 seconds West 6,250.91 feet to a point having Coordinates of X = 1,677,799.43 and Y = 98,729.83, South 14 degrees 41 minutes 25 seconds West 136.02 feet, South 08 degrees 41 minutes 00 seconds East 552.91 feet, South 19 degrees 40 minutes 02 seconds East 468.74 feet, South 10 degrees 51 minutes 27 seconds East 352.72 feet, South 00 degrees 37 minutes 55 seconds West 279.57 feet, South 32 degrees 34 minutes 57 seconds West 163.23 feet to a point having Coordinates of X = 1,677,981.62 and Y = 96,846.79, South 00 degrees 45 minutes 57 seconds East 6,050.48 feet to a point having Coordinates of X = 1,678,062.47 and Y = 90,796.85 and South 00 degrees 06 minutes 15 seconds East 2,066.85 feet to a point having Coordinates of X = 1,678,066.24 and Y = 88,730.00; thence West 12,496.24 feet to a point having Coordinates of X = 1,665,570.00 and Y = 88,730.00; thence North 18,480.00 feet to the point of beginning, containing approximately 158 acres, **LESS AND EXCEPT** any portion of the Clear Creek/Boise Vernon Wildlife Management Area which lies within the above described tract, containing approximately **158 acres**, **LESS AND EXCEPT** that portion thereof, if any, located West of the boundary line between the States of Texas and Louisiana as determined by the report of the Special Master and adjudicated by the Supreme Court of the United States in litigation styled **Texas v. Louisiana, et al No. 36 Original**, or as otherwise approved by said court, all as more particularly outlined on a plat on file in the Office of Mineral Resources, Department of Natural Resources. All bearings, distances and coordinates are based on Louisiana Coordinate System of 1927, (North or South Zone), where applicable.

NOTE: The above description of the Tract nominated for lease has been provided and corrected, where required, exclusively by the nomination party. Any mineral lease selected from this Tract and awarded by the Louisiana State Mineral and Energy Board shall be without warranty of any kind, either express, implied, or statutory, including, but not limited to, the implied warranties of merchantability and fitness for a particular purpose. Should the mineral lease awarded by the Louisiana State Mineral and Energy Board be subsequently modified, cancelled or abrogated due to the existence of conflicting leases, operating agreements, private claims or other future obligations or conditions which may affect all or any portion of the leased Tract, it shall not relieve the Lessee of the



obligation to pay any bonus due thereon to the Louisiana State Mineral and Energy Board, nor shall the Louisiana State Mineral and Energy Board be obligated to refund any consideration paid by the Lessor prior to such modification, cancellation, or abrogation, including, but not limited to, bonuses, rentals and royalties.

Applicant: BASIN PROPERTIES, INC.

Bidder	Cash Payment	Price/Acre	Rental	Oil	Gas	Other

**Legend**

13080033

Active\_Leases

DOQQ2008



VERNON PARISH

T1S - R11W

SABINE RIVER

T2S - R11W

SL 20292

13080033

P.O.B.



0 4,000 Feet

**TRACT 43394 - Beauregard Parish, Louisiana**

All of the lands now or formerly constituting the beds and bottoms of all water bodies of every nature and description as to which title is vested in the State of Louisiana, together with all islands arising therein and other lands formed by accretion or by reliction, where allowed by law, excepting tax adjudicated lands, and not presently under mineral lease on August 14, 2013, situated in Beauregard Parish, Louisiana, and more particularly described as follows: Beginning at a point having Coordinates of X = 1,477,840.10 and Y = 726,409.90; thence South 45 degrees 00 minutes 00 seconds West 7,500.00 feet to a point having Coordinates X = 1,472,536.80 and Y = 721,106.60; thence North 45 degrees 00 minutes 00 seconds West 12,500.00 feet to a point having Coordinates of X = 1,463,697.96 and Y = 729,945.43; thence North 45 degrees 00 minutes 00 seconds East 7,500.00 feet to a point having Coordinates of X = 1,469,001.26 and Y = 735,248.73; thence South 45 degrees 00 minutes 00 seconds East 12,500.00 feet to the point of beginning, containing **36 acres**, all as more particularly outlined on a plat on file in the Office of Mineral Resources, Department of Natural Resources. All bearings, distances and coordinates are based on Louisiana Coordinate System of 1927, (North or South Zone), where applicable.

NOTE: The above description of the Tract nominated for lease has been provided and corrected, where required, exclusively by the nomination party. Any mineral lease selected from this Tract and awarded by the Louisiana State Mineral and Energy Board shall be without warranty of any kind, either express, implied, or statutory, including, but not limited to, the implied warranties of merchantability and fitness for a particular purpose. Should the mineral lease awarded by the Louisiana State Mineral and Energy Board be subsequently modified, cancelled or abrogated due to the existence of conflicting leases, operating agreements, private claims or other future obligations or conditions which may affect all or any portion of the leased Tract, it shall not relieve the Lessee of the obligation to pay any bonus due thereon to the Louisiana State Mineral and Energy Board, nor shall the Louisiana State Mineral and Energy Board be obligated to refund any consideration paid by the Lessor prior to such modification, cancellation, or abrogation, including, but not limited to, bonuses, rentals and royalties.

NOTE: The above Tract is located upon a restricted scenic river and all operations in this area must be conducted in strict conformity with the regulations of the Corps of Engineers, U.S. Army.

Applicant: PROACTIVE LAND SOLUTIONS

Bidder	Cash Payment	Price/Acre	Rental	Oil	Gas	Other

**Legend**  
13080012  
DOQQ2008

BEAUREGARD PARISH

P.O.B.

BUNDICK CREEK

T4S - R7W

T5S - R7W

0 4,000 Feet  
N

**TRACT 43395 - Allen and Beauregard Parishes, Louisiana**

All of the lands now or formerly constituting the beds and bottoms of all water bodies of every nature and description as to which title is vested in the State of Louisiana, together with all islands arising therein and other lands formed by accretion or by reliction, where allowed by law, excepting tax adjudicated lands, and not presently under mineral lease on August 14, 2013, situated in Allen and Beauregard Parishes, Louisiana, and more particularly described as follows: Beginning at a point having Coordinates of X = 1,485,795.05 and Y = 718,454.95; thence South 45 degrees 00 minutes 00 seconds West 7,500.00 feet to a point having Coordinates X = 1,480,491.75 and Y = 713,151.65; thence North 45 degrees 00 minutes 00 seconds West 11,250.00 feet to a point having Coordinates of X = 1,472,536.80 and Y = 721,106.60; thence North 45 degrees 00 minutes 00 seconds East 7,500.00 feet to a point having Coordinates of X = 1,477,840.10 and Y = 726,409.90; thence South 45 degrees 00 minutes 00 seconds East 11,250.00 feet to the point of beginning, **LESS AND EXCEPT** any right, title, and interest in lands owned by and not under lease from the State of Louisiana, on behalf of the Allen and Beauregard Parish School Boards, situated in Section 16, Township 5 South, Range 6 West, Allen and Beauregard Parishes, Louisiana, contained within the above described tract, containing **28 acres**, all as more particularly outlined on a plat on file in the Office of Mineral Resources, Department of Natural Resources. All bearings, distances and coordinates are based on Louisiana Coordinate System of 1927, (North or South Zone), where applicable.

NOTE: The above description of the Tract nominated for lease has been provided and corrected, where required, exclusively by the nomination party. Any mineral lease selected from this Tract and awarded by the Louisiana State Mineral and Energy Board shall be without warranty of any kind, either express, implied, or statutory, including, but not limited to, the implied warranties of merchantability and fitness for a particular purpose. Should the mineral lease awarded by the Louisiana State Mineral and Energy Board be subsequently modified, cancelled or abrogated due to the existence of conflicting leases, operating agreements, private claims or other future obligations or conditions which may affect all or any portion of the leased Tract, it shall not relieve the Lessee of the obligation to pay any bonus due thereon to the Louisiana State Mineral and Energy Board, nor shall the Louisiana State Mineral and Energy Board be obligated to refund any consideration paid by the Lessor prior to such modification, cancellation, or abrogation, including, but not limited to, bonuses, rentals and royalties.

NOTE: The above Tract is located upon a restricted scenic river and all operations in this area must be conducted in strict conformity with the regulations of the Corps of Engineers, U.S. Army.

Applicant: PROACTIVE LAND SOLUTIONS

Bidder	Cash Payment	Price/Acre	Rental	Oil	Gas	Other

**Legend**

- 13080011
- Counties
- DOQQ2008

ALLEN PARISH

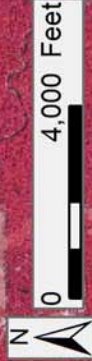
BEAUREGARD PARISH

BUNDICK CREEK

P.O.B.

T5S - R6W

T5S - R7W





**TRACT 43396 - Allen and Beauregard Parishes, Louisiana**

All of the lands now or formerly constituting the beds and bottoms of all water bodies of every nature and description as to which title is vested in the State of Louisiana, together with all islands arising therein and other lands formed by accretion or by reliction, where allowed by law, excepting tax adjudicated lands, and not presently under mineral lease on August 14, 2013, situated in Allen and Beauregard Parishes, Louisiana, and more particularly described as follows: Beginning at a point having Coordinates of X = 1,493,750.00 and Y = 710,500.00; thence South 45 degrees 00 minutes 00 seconds West 7,500.00 feet to a point having Coordinates of X = 1,488,446.70 and Y = 705,196.70; thence North 45 degrees 00 minutes 00 seconds West 11,250.00 feet to a point having Coordinates of X = 1,480,491.75 and Y = 713,151.65; thence North 45 degrees 00 minutes 00 seconds East 7,500.00 feet to a point having Coordinates of X = 1,485,795.05 and Y = 718,454.95; thence South 45 degrees 00 minutes 00 seconds East 11,250.00 feet to the point of beginning, **LESS AND EXCEPT** any right, title, and interest in lands owned by and not under lease from the State of Louisiana, on behalf of the Allen and Beauregard Parish School Boards, situated in Section 16, Township 5 South, Range 6 West, Allen and Beauregard Parishes, Louisiana, contained within the above described tract, containing **37 acres**, all as more particularly outlined on a plat on file in the Office of Mineral Resources, Department of Natural Resources. All bearings, distances and coordinates are based on Louisiana Coordinate System of 1927, (North or South Zone), where applicable.

NOTE: The above description of the Tract nominated for lease has been provided and corrected, where required, exclusively by the nomination party. Any mineral lease selected from this Tract and awarded by the Louisiana State Mineral and Energy Board shall be without warranty of any kind, either express, implied, or statutory, including, but not limited to, the implied warranties of merchantability and fitness for a particular purpose. Should the mineral lease awarded by the Louisiana State Mineral and Energy Board be subsequently modified, cancelled or abrogated due to the existence of conflicting leases, operating agreements, private claims or other future obligations or conditions which may affect all or any portion of the leased Tract, it shall not relieve the Lessee of the obligation to pay any bonus due thereon to the Louisiana State Mineral and Energy Board, nor shall the Louisiana State Mineral and Energy Board be obligated to refund any consideration paid by the Lessor prior to such modification, cancellation, or abrogation, including, but not limited to, bonuses, rentals and royalties.

NOTE: The above Tract is located upon a restricted scenic river and all operations in this area must be conducted in strict conformity with the regulations of the Corps of Engineers, U.S. Army.

Applicant: PROACTIVE LAND SOLUTIONS

Bidder	Cash Payment	Price/Acre	Rental	Oil	Gas	Other

**Legend**

13080010  
DOQQ2008

ALLEN PARISH

T5S - R6W

BUNDICK CREEK

P.O.B.

WHISKEY CHITTO CREEK



0 3,000 Feet

**TRACT 43397 - East Baton Rouge and West Baton Rouge Parishes, Louisiana**

All of the lands now or formerly constituting the beds and bottoms of all water bodies of every nature and description as to which title is vested in the State of Louisiana, together with all islands arising therein and other lands formed by accretion or by reliction, where allowed by law, excepting tax adjudicated lands, and not presently under mineral lease on August 14, 2013, situated in East Baton Rouge and West Baton Rouge Parishes, Louisiana, and more particularly described as follows: Beginning at a point having Coordinates of X = 2,024,985.00 and Y = 613,875.43; thence East 16,000.00 feet to a point having Coordinates of X = 2,040,985.00 and Y = 613,875.43; thence South 8,145.43 feet to a point having Coordinates of X = 2,040,985.00 and Y = 605,730.00; thence West 16,000.00 feet to a point having Coordinates of X = 2,024,985.00 and Y = 605,730.00; thence North 8,145.43 feet to the Point of Beginning, containing approximately **1,016 acres**, all as more particularly outlined on a plat on file in the Office of Mineral Resources, Department of Natural Resources. All bearings, distances and coordinates are based on Louisiana Coordinate System of 1927, (North or South Zone), where applicable.

NOTE: The above description of the Tract nominated for lease has been provided and corrected, where required, exclusively by the nomination party. Any mineral lease selected from this Tract and awarded by the Louisiana State Mineral and Energy Board shall be without warranty of any kind, either express, implied, or statutory, including, but not limited to, the implied warranties of merchantability and fitness for a particular purpose. Should the mineral lease awarded by the Louisiana State Mineral and Energy Board be subsequently modified, cancelled or abrogated due to the existence of conflicting leases, operating agreements, private claims or other future obligations or conditions which may affect all or any portion of the leased Tract, it shall not relieve the Lessee of the obligation to pay any bonus due thereon to the Louisiana State Mineral and Energy Board, nor shall the Louisiana State Mineral and Energy Board be obligated to refund any consideration paid by the Lessor prior to such modification, cancellation, or abrogation, including, but not limited to, bonuses, rentals and royalties.

Applicant: AMEX RESOURCES, INC.

Bidder	Cash Payment	Price/Acre	Rental	Oil	Gas	Other

**Legend**

- 13080036
- Counties
- DOQQ2008

T8S - R1W

EAST BATON ROUGE PARISH

MISSISSIPPI RIVER



P.O.B.

T8S - R12E

WEST BATON ROUGE PARISH

0 4,000 Feet