

**TRACT 43398 - East Baton Rouge and West Baton Rouge Parishes, Louisiana**

All of the lands now or formerly constituting the beds and bottoms of all water bodies of every nature and description as to which title is vested in the State of Louisiana, together with all islands arising therein and other lands formed by accretion or by reliction, where allowed by law, excepting tax adjudicated lands, and not presently under mineral lease on August 14, 2013, situated in East Baton Rouge and West Baton Rouge Parishes, Louisiana, and more particularly described as follows: Beginning at a point having Coordinates of X = 2,040,985.00 and Y = 613,875.43; thence East 6,031.60 feet to a point being the Northwest corner of State Lease No. 5021 having Coordinates of X = 2,047,016.60 and Y = 613,875.43; thence South 07 degrees 52 minutes 59 seconds West 2,600.00 feet along the boundary of said State Lease No. 5021 to a point being its Southwest corner having Coordinates of X = 2,046,660.00 and Y = 611,300.00; thence South 08 degrees 46 minutes 38 seconds West 5,636.00 feet to a point having Coordinates of X = 2,045,800.00 and Y = 605,730.00; thence West 4,815.00 feet to a point having Coordinates of X = 2,040,985.00 and Y = 605,730.00; thence North 8,145.43 feet to the point of beginning, (This lease includes only waterbottoms claimed and owned by the state and specifically excludes any land which the state may claim or own and to which the mineral rights are vested in the state), containing approximately **383 acres**, all as more particularly outlined on a plat on file in the Office of Mineral Resources, Department of Natural Resources. All bearings, distances and coordinates are based on Louisiana Coordinate System of 1927, (North or South Zone), where applicable.

NOTE: The above description of the Tract nominated for lease has been provided and corrected, where required, exclusively by the nomination party. Any mineral lease selected from this Tract and awarded by the Louisiana State Mineral and Energy Board shall be without warranty of any kind, either express, implied, or statutory, including, but not limited to, the implied warranties of merchantability and fitness for a particular purpose. Should the mineral lease awarded by the Louisiana State Mineral and Energy Board be subsequently modified, cancelled or abrogated due to the existence of conflicting leases, operating agreements, private claims or other future obligations or conditions which may affect all or any portion of the leased Tract, it shall not relieve the Lessee of the obligation to pay any bonus due thereon to the Louisiana State Mineral and Energy Board, nor shall the Louisiana State Mineral and Energy Board be obligated to refund any consideration paid by the Lessor prior to such modification, cancellation, or abrogation, including, but not limited to, bonuses, rentals and royalties.

Bidder	Cash Payment	Price/Acre	Rental	Oil	Gas	Other


Applicant: AMEX RESOURCES, INC.

**Legend**

13080035

Active\_Leases

DOQQ2008



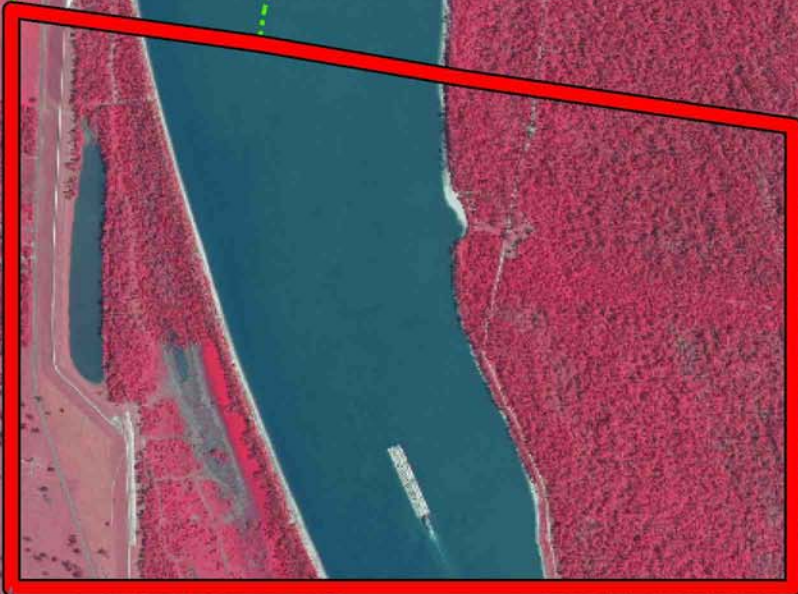
0 2,000 Feet



EAST BATON ROUGE PARISH

P.O.B.

SL 5021



MISSISSIPPI RIVER

WEST BATON ROUGE PARISH

**TRACT 43399 - De Soto Parish, Louisiana**

All of the lands now or formerly constituting the beds and bottoms of all water bodies of every nature and description as to which title is vested in the State of Louisiana, together with all islands arising therein and other lands formed by accretion or by reliction, where allowed by law, excepting tax adjudicated lands, and not presently under mineral lease on August 14, 2013, situated in De Soto Parish, Louisiana, and more particularly described as follows: Beginning at a point being the Easternmost Northwest corner of State Lease No. 18371, as amended, also being the Southeast corner of State Lease No. 20149 having Coordinates of X = 1,614,990.19 and Y = 600,313.81; thence North 00 degrees 07 minutes 56 seconds East 4,986.20 feet along the Eastern boundary of said State Lease No. 20149 to a point being its Northeast corner having Coordinates of X = 1,615,001.70 and Y = 605,300.00, said point also being the Southeast corner of State Lease No. 19459; thence North 00 degrees 09 minutes 46 seconds East 194.98 feet along the Eastern boundary of said State Lease No. 19459 to a point having Coordinates of X = 1,615,002.25 and Y = 605,494.97; thence South 88 degrees 56 minutes 59 seconds East 47.67 feet to a point being the Southwest corner of State Lease No. 20356 having Coordinates of X = 1,615,049.92 and Y = 605,494.10; thence South 88 degrees 56 minutes 59 seconds East 4,789.62 feet along the Southern boundary of said State Lease No. 20356 to a point having Coordinates of X = 1,619,838.73 and Y = 605,406.30; thence South 00 degrees 26 minutes 51 seconds West 23.10 feet to a point being the Northernmost Northwest corner of said State Lease No. 18371 having Coordinates of X = 1,619,838.55 and Y = 605,383.20; thence along the boundary of said State Lease No. 18371 the following: South 00 degrees 26 minutes 51 seconds West 5,153.29 feet to a point having Coordinates of X = 1,619,798.32 and Y = 600,230.07, North 89 degrees 00 minutes 08 seconds West 3,416.96 feet to a point having Coordinates of X = 1,616,381.87 and Y = 600,89.57, and North 89 degrees 00 minutes 08 seconds West 1,391.89 feet to the point of beginning, containing approximately **160 acres**, all as more particularly outlined on a plat on file in the Office of Mineral Resources, Department of Natural Resources. All bearings, distances and coordinates are based on Louisiana Coordinate System of 1927, (North or South Zone), where applicable.

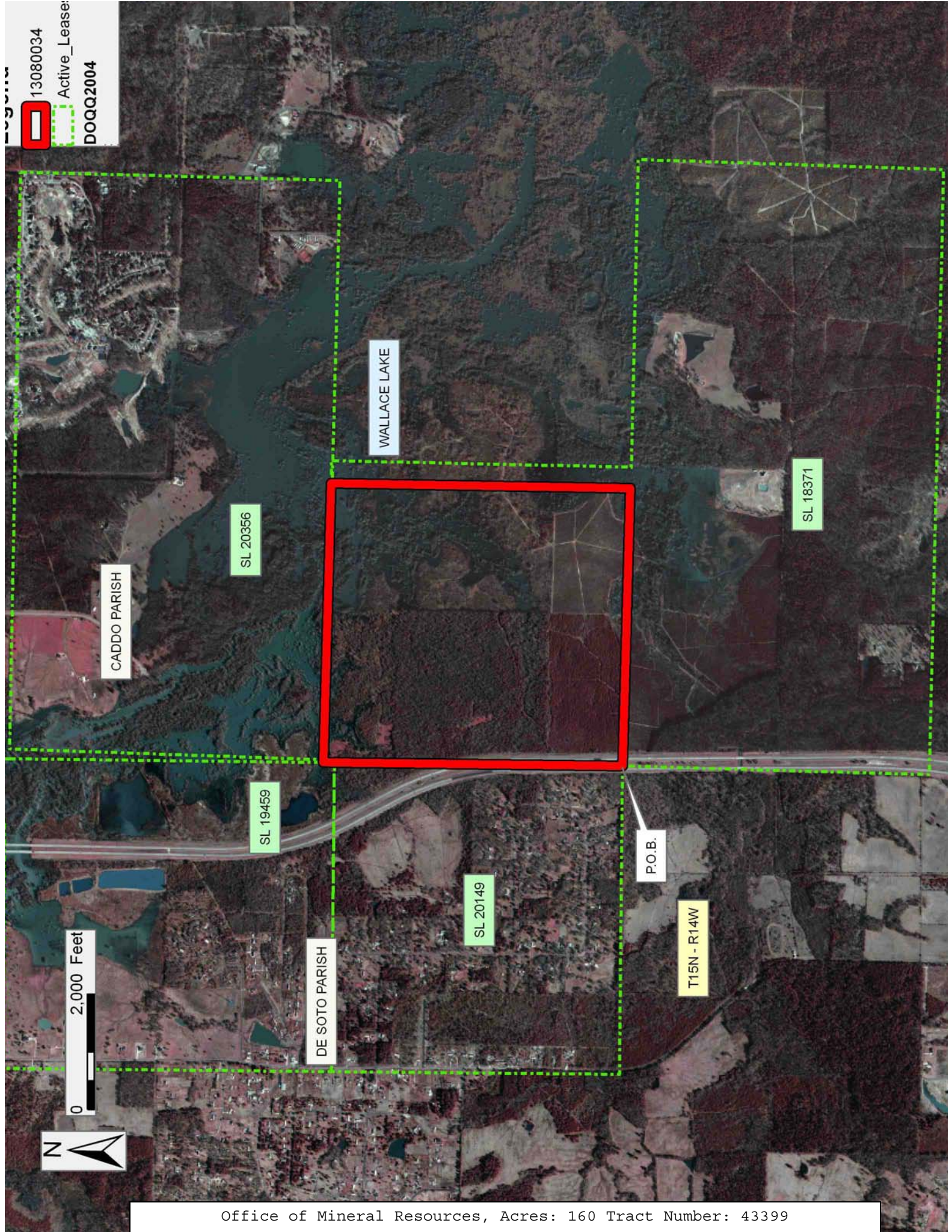
NOTE: The above description of the Tract nominated for lease has been provided and corrected, where required, exclusively by the nomination party. Any mineral lease selected from this Tract and awarded by the Louisiana State Mineral and Energy Board shall be without warranty of any kind, either express, implied, or statutory, including, but not limited to, the implied warranties of merchantability and fitness for a particular purpose. Should the mineral lease awarded by the Louisiana State Mineral and Energy Board be subsequently modified, cancelled or abrogated due to the existence of conflicting leases, operating agreements, private claims or other future obligations or conditions which may affect all or any portion of the leased Tract, it shall not relieve the Lessee of the obligation to pay any bonus due thereon to the Louisiana State Mineral and Energy Board, nor shall the Louisiana State Mineral and Energy Board be

obligated to refund any consideration paid by the Lessor prior to such modification, cancellation, or abrogation, including, but not limited to, bonuses, rentals and royalties.

Applicant: THEOPHILUS OIL, GAS & LAND SERVICES, LLC

Bidder	Cash Payment	Price/Acre	Rental	Oil	Gas	Other

13080034  
Active Lease:  
DOQQ2004



**TRACT 43400 - Vermilion Parish, Louisiana**

All of the lands now or formerly constituting the beds and bottoms of all water bodies of every nature and description as to which title is vested in the State of Louisiana, together with all islands arising therein and other lands formed by accretion or by reliction, where allowed by law, excepting tax adjudicated lands, and not presently under mineral lease on August 14, 2013, situated in Vermilion Parish, Louisiana, and more particularly described as follows: Beginning at a point having Coordinates of X = 1,739,156.95 and Y = 481,808.57; thence South 79 degrees 43 minutes 59 seconds East 736.72 feet to a point being the Northwest corner of State Lease No. 20180 having Coordinates of X = 1,739,881.87 and Y = 481,677.26; thence South 79 degrees 43 minutes 59 seconds East 358.21 feet along the South line of said State Lease No. 20180 to a point having the Coordinates X = 1,740,234.35 and Y = 481,613.42; thence South 1,497.31 feet to a point having Coordinates of X = 1,740,234.35 and Y = 480,116.11; thence North 74 degrees 54 minutes 42 seconds West 1,115.87 feet to a point having Coordinates of X = 1,739,156.95 feet and Y = 480,406.58 feet; thence North 1,401.99 feet to the point of beginning, containing approximately **4 acres**, all as more particularly outlined on a plat on file in the Office of Mineral Resources, Department of Natural Resources. All bearings, distances and coordinates are based on Louisiana Coordinate System of 1927, (North or South Zone), where applicable.

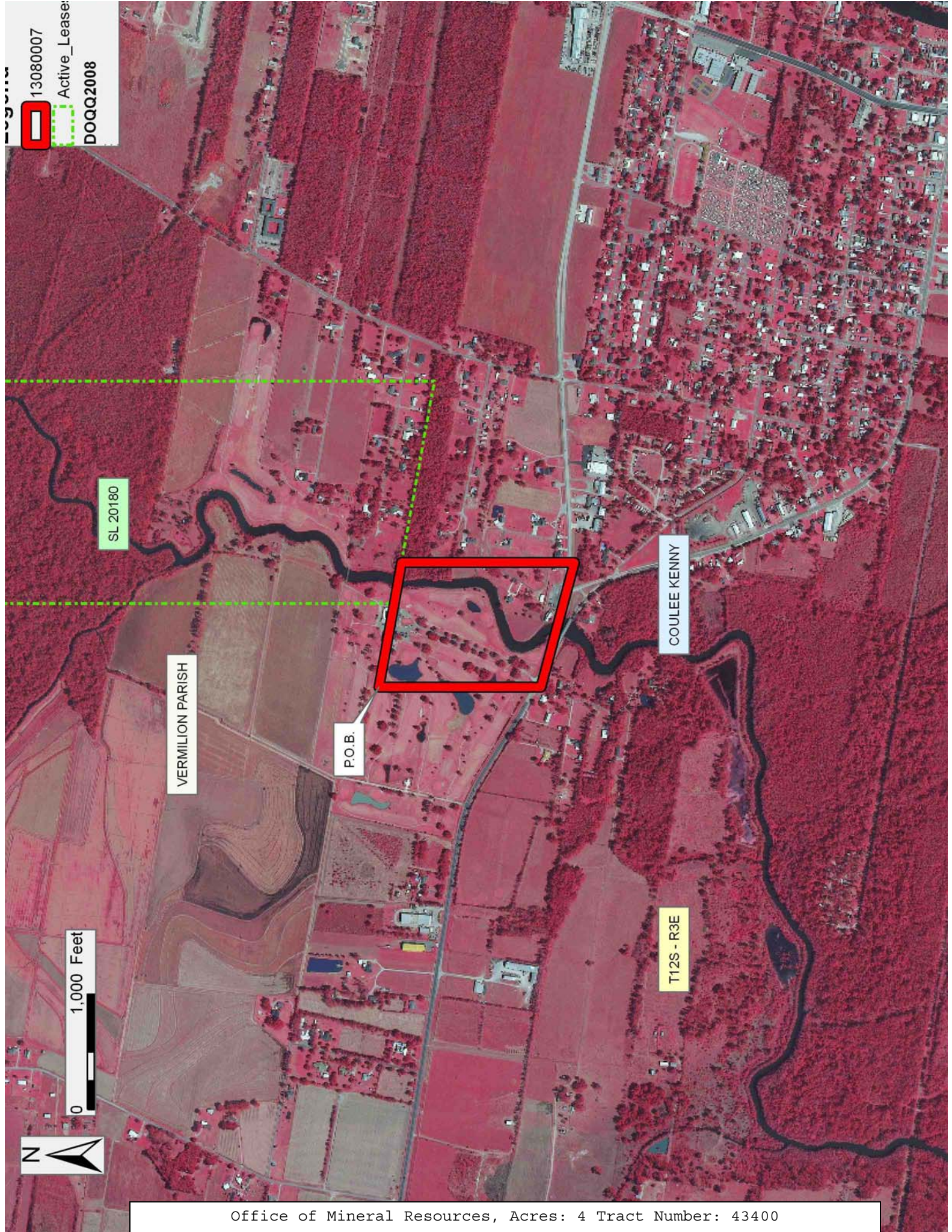
NOTE: The above description of the Tract nominated for lease has been provided and corrected, where required, exclusively by the nomination party. Any mineral lease selected from this Tract and awarded by the Louisiana State Mineral and Energy Board shall be without warranty of any kind, either express, implied, or statutory, including, but not limited to, the implied warranties of merchantability and fitness for a particular purpose. Should the mineral lease awarded by the Louisiana State Mineral and Energy Board be subsequently modified, cancelled or abrogated due to the existence of conflicting leases, operating agreements, private claims or other future obligations or conditions which may affect all or any portion of the leased Tract, it shall not relieve the Lessee of the obligation to pay any bonus due thereon to the Louisiana State Mineral and Energy Board, nor shall the Louisiana State Mineral and Energy Board be obligated to refund any consideration paid by the Lessor prior to such modification, cancellation, or abrogation, including, but not limited to, bonuses, rentals and royalties.

Applicant: PATRICK L. DONOHUE PETROLEUM PROPERTIES, INC.

Bidder	Cash Payment	Price/Acre	Rental	Oil	Gas	Other



13080007  
Active\_Lease:  
DOQQ2008



SL 20180

VERMILION PARISH

P.O.B.

COULEE KENNY

T12S - R3E

1,000 Feet



**TRACT 43401 - Vermilion Parish, Louisiana**

All of the lands now or formerly constituting the beds and bottoms of all water bodies of every nature and description as to which title is vested in the State of Louisiana, together with all islands arising therein and other lands formed by accretion or by reliction, where allowed by law, excepting tax adjudicated lands, and not presently under mineral lease on August 14, 2013, situated in Vermilion Parish, Louisiana, and more particularly described as follows: Beginning at a point having Coordinates of X = 1,739,156.95 and Y = 480,406.58; thence South 74 degrees 54 minutes 42 seconds East 1,115.87 feet to a point having Coordinates of X = 1,740,234.35 and Y = 480,116.11; thence South 1,803.27 feet to a point having Coordinates of X = 1,740,234.35 and Y = 478,312.84; thence South 85 degrees 52 minutes 00 seconds West 1,080.21 feet to a point having Coordinates of X = 1,739,156.95 and Y = 478,234.98; thence North 2,171.60 feet to the point of beginning, containing approximately **5 acres**, all as more particularly outlined on a plat on file in the Office of Mineral Resources, Department of Natural Resources. All bearings, distances and coordinates are based on Louisiana Coordinate System of 1927, (North or South Zone), where applicable.

NOTE: The above description of the Tract nominated for lease has been provided and corrected, where required, exclusively by the nomination party. Any mineral lease selected from this Tract and awarded by the Louisiana State Mineral and Energy Board shall be without warranty of any kind, either express, implied, or statutory, including, but not limited to, the implied warranties of merchantability and fitness for a particular purpose. Should the mineral lease awarded by the Louisiana State Mineral and Energy Board be subsequently modified, cancelled or abrogated due to the existence of conflicting leases, operating agreements, private claims or other future obligations or conditions which may affect all or any portion of the leased Tract, it shall not relieve the Lessee of the obligation to pay any bonus due thereon to the Louisiana State Mineral and Energy Board, nor shall the Louisiana State Mineral and Energy Board be obligated to refund any consideration paid by the Lessor prior to such modification, cancellation, or abrogation, including, but not limited to, bonuses, rentals and royalties.

Bidder	Cash Payment	Price/Acre	Rental	Oil	Gas	Other

Applicant: PATRICK L. DONOHUE PETROLEUM PROPERTIES, INC.

**Legend**  
13080008  
DOQQ2008

VERMILION PARISH

P.O.B.

COULEE KENNY

T12S - R3E

2,000 Feet



**TRACT 43402 - Vermilion Parish, Louisiana**

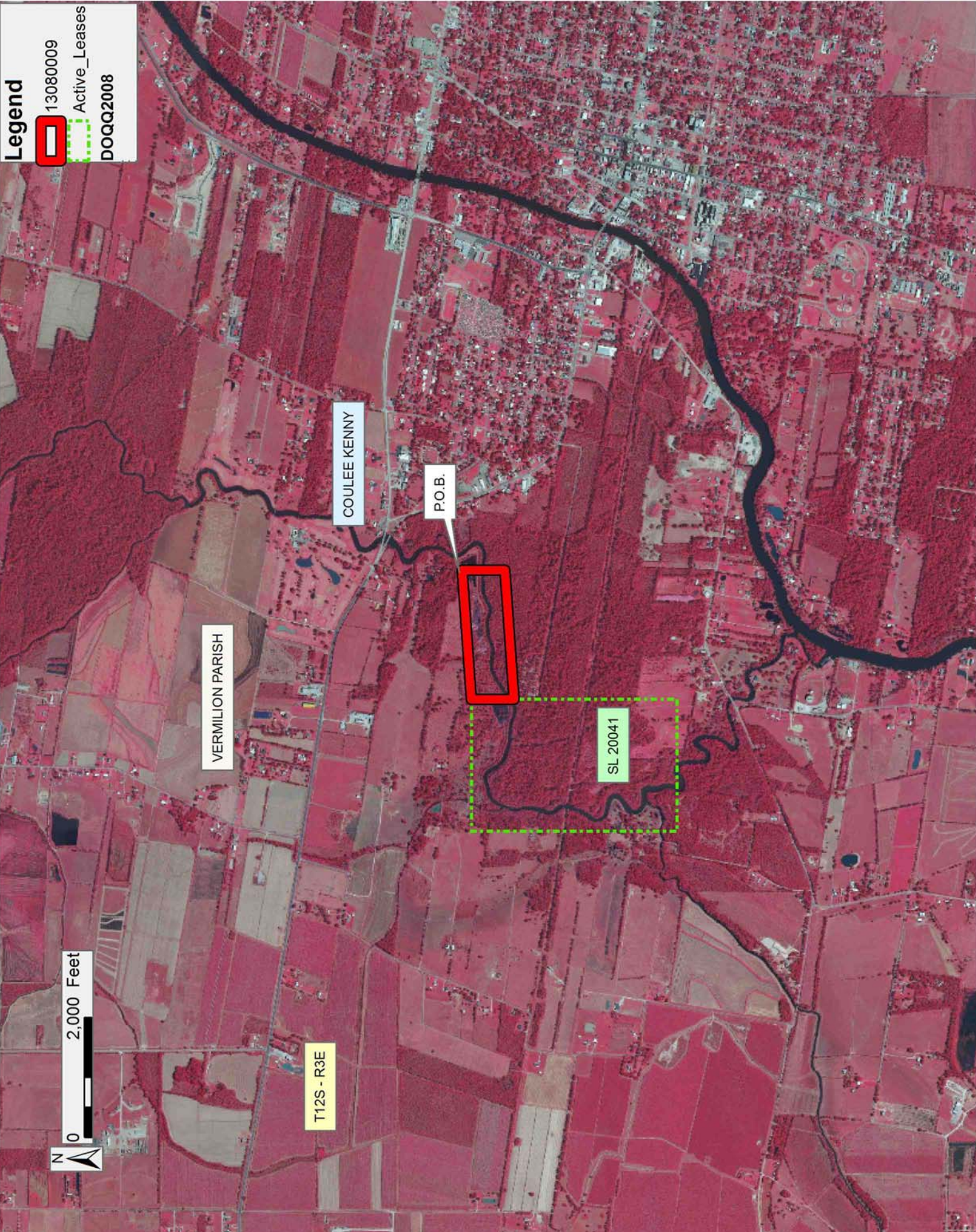
All of the lands now or formerly constituting the beds and bottoms of all water bodies of every nature and description as to which title is vested in the State of Louisiana, together with all islands arising therein and other lands formed by accretion or by reliction, where allowed by law, excepting tax adjudicated lands, and not presently under mineral lease on August 14, 2013, situated in Vermilion Parish, Louisiana, and more particularly described as follows: Beginning at a point having Coordinates of X = 1,739,156.95 and Y = 478,944.61; thence South 709.63 feet to a point having Coordinates of X = 1,739,156.95 and Y = 478,234.98; thence South 85 degrees 52 minutes 00 seconds West 2,161.47 feet to a point on the West line of State Lease No. 20041 having Coordinates of X = 1,737,001.10 and Y = 478,079.18; thence North 709.63 feet along the West line of State Lease No. 20041 to a point being the Northeast corner of State Lease No. 20041 having Coordinates of X = 1,737,001.10 and Y = 478,788.81; thence North 85 degrees 52 minutes 00 seconds East 2,161.47 feet to the point of beginning, containing approximately **4 acres**, all as more particularly outlined on a plat on file in the Office of Mineral Resources, Department of Natural Resources. All bearings, distances and coordinates are based on Louisiana Coordinate System of 1927, (North or South Zone), where applicable.

NOTE: The above description of the Tract nominated for lease has been provided and corrected, where required, exclusively by the nomination party. Any mineral lease selected from this Tract and awarded by the Louisiana State Mineral and Energy Board shall be without warranty of any kind, either express, implied, or statutory, including, but not limited to, the implied warranties of merchantability and fitness for a particular purpose. Should the mineral lease awarded by the Louisiana State Mineral and Energy Board be subsequently modified, cancelled or abrogated due to the existence of conflicting leases, operating agreements, private claims or other future obligations or conditions which may affect all or any portion of the leased Tract, it shall not relieve the Lessee of the obligation to pay any bonus due thereon to the Louisiana State Mineral and Energy Board, nor shall the Louisiana State Mineral and Energy Board be obligated to refund any consideration paid by the Lessor prior to such modification, cancellation, or abrogation, including, but not limited to, bonuses, rentals and royalties.

Applicant: PATRICK L. DONOHUE PETROLEUM PROPERTIES, INC.

Bidder	Cash Payment	Price/Acre	Rental	Oil	Gas	Other

**Legend**  
13080009  
Active\_Leases  
DOQQ2008



**TRACT 43403 - St. Mary Parish, Louisiana**

All of the lands now or formerly constituting the beds and bottoms of all water bodies of every nature and description as to which title is vested in the State of Louisiana, together with all islands arising therein and other lands formed by accretion or by reliction, where allowed by law, excepting tax adjudicated lands, and not presently under mineral lease on August 14, 2013, situated in St. Mary Parish, Louisiana, and more particularly described as follows: Beginning at a point having Coordinates of X = 1,903,000.00 and Y = 349,002.93; thence East 11,410.00 feet to a point having Coordinates of X = 1,914,410.00 and Y = 349,002.93; thence South 14,148.46 feet to a point having Coordinates of X = 1,914,410.00 and Y = 334,854.47; thence West 6,096.28 feet to the Southeast corner of State Lease No. 10251, as amended, having Coordinates of X = 1,908,313.72 and Y = 334,854.47; thence North 00 degrees 06 minutes 10 seconds East 3,239.50 feet to the Northeast corner of said State Lease No. 10251, also being the Southwest corner of State Lease No. 3132, as amended, having Coordinates of X = 1,908,319.53 and Y = 338,093.97; thence North 00 degrees 06 minutes 10 seconds East 996.99 feet along the East line of said State Lease No. 3132 to its Northeast corner, also being a point on the Southern boundary of State Lease No. 16381, having Coordinates of X = 1,908,321.32 and Y = 339,090.96; thence along the boundary of said State Lease No. 16381 the following courses and distances: Easterly approximately 5,093 feet, Northerly approximately 3,413 feet and Westerly approximately 10,410 feet to a point having Coordinates of X = 1,903,000.00 and Y = 342,500.00; thence North 6,502.93 feet to the point of beginning, containing approximately **2,374 acres**, all as more particularly outlined on a plat on file in the Office of Mineral Resources, Department of Natural Resources. All bearings, distances and coordinates are based on Louisiana Coordinate System of 1927, (North or South Zone), where applicable.

NOTE: The above description of the Tract nominated for lease has been provided and corrected, where required, exclusively by the nomination party. Any mineral lease selected from this Tract and awarded by the Louisiana State Mineral and Energy Board shall be without warranty of any kind, either express, implied, or statutory, including, but not limited to, the implied warranties of merchantability and fitness for a particular purpose. Should the mineral lease awarded by the Louisiana State Mineral and Energy Board be subsequently modified, cancelled or abrogated due to the existence of conflicting leases, operating agreements, private claims or other future obligations or conditions which may affect all or any portion of the leased Tract, it shall not relieve the Lessee of the obligation to pay any bonus due thereon to the Louisiana State Mineral and Energy Board, nor shall the Louisiana State Mineral and Energy Board be obligated to refund any consideration paid by the Lessor prior to such modification, cancellation, or abrogation, including, but not limited to, bonuses, rentals and royalties.

NOTE: The State of Louisiana does hereby reserve, and this lease shall be subject to, the imprescriptible right of surface use in the nature of a



servitude in favor of the Department of Natural Resources, including its Offices and Commissions, for the sole purpose of implementing, constructing, servicing and maintaining approved coastal zone management and/or restoration projects. Utilization of any and all rights derived under this lease by the mineral lessee, its agents, successors or assigns, shall not interfere with nor hinder the reasonable surface use by the Department of Natural Resources, its Offices or Commissions, as herein above reserved.

NOTE: This tract is located in an area designated by the Louisiana Legislature or the Wildlife and Fisheries Commission as a Public Oyster Seed Ground, Reservation, or area of Calcasieu or Sabine Lake. Proposed projects occurring in these areas will be evaluated on a case by case basis by Louisiana Department of Wildlife & Fisheries. Modifications to proposed project features including, but not limited to, access routes, well sites, flowlines, and appurtenant structures maybe required by the Louisiana Department of Wildlife and Fisheries. In addition, compensatory mitigation will be required to offset unavoidable habitat impacts.

Applicant: THEOPHILUS OIL, GAS & LAND SERVICES, LLC

Bidder	Cash Payment	Price/Acre	Rental	Oil	Gas	Other



0 4,000 Feet

**Legend**

13080025

Active\_Leases

ST MARY PARISH

ATCHAFALAYA BAY

P.O.B.

SL 16381

SL 3132

SL 10251

**TRACT 43404 - Iberia Parish, Louisiana**

All of the lands now or formerly constituting the beds and bottoms of all water bodies of every nature and description as to which title is vested in the State of Louisiana, together with all islands arising therein and other lands formed by accretion or by reliction, where allowed by law, excepting tax adjudicated lands, and not presently under mineral lease on August 14, 2013, situated in Iberia Parish, Louisiana, and more particularly described as follows: Beginning at a point having Coordinates of X = 1,862,034.16 and Y = 349,002.93; thence East 6,733.49 feet to a point having Coordinates of X = 1,868,767.65 and Y = 349,002.93; thence South 12,121.83 feet to the Northwest corner of State Lease No. 1706, as amended, having Coordinates of X = 1,868,767.65 and Y = 336,881.10; thence along the boundary of said State Lease No. 1706 the following courses and distances: South 3,733.52 feet to a point having Coordinates of X = 1,868,767.65 and Y = 333,147.58 and North 89 degrees 45 minutes 52 seconds West 3,733.32 feet to a point having Coordinates of X = 1,865,034.16 and Y = 333,162.93; thence West 3,000.00 to a point having Coordinates of X = 1,862,034.16 and Y = 333,162.93; thence North 15,840.00 feet to the point of beginning, containing approximately **2,449.20 acres**, all as more particularly outlined on a plat on file in the Office of Mineral Resources, Department of Natural Resources. All bearings, distances and coordinates are based on Louisiana Coordinate System of 1927, (North or South Zone), where applicable.

NOTE: The above description of the Tract nominated for lease has been provided and corrected, where required, exclusively by the nomination party. Any mineral lease selected from this Tract and awarded by the Louisiana State Mineral and Energy Board shall be without warranty of any kind, either express, implied, or statutory, including, but not limited to, the implied warranties of merchantability and fitness for a particular purpose. Should the mineral lease awarded by the Louisiana State Mineral and Energy Board be subsequently modified, cancelled or abrogated due to the existence of conflicting leases, operating agreements, private claims or other future obligations or conditions which may affect all or any portion of the leased Tract, it shall not relieve the Lessee of the obligation to pay any bonus due thereon to the Louisiana State Mineral and Energy Board, nor shall the Louisiana State Mineral and Energy Board be obligated to refund any consideration paid by the Lessor prior to such modification, cancellation, or abrogation, including, but not limited to, bonuses, rentals and royalties.

NOTE: The State of Louisiana does hereby reserve, and this lease shall be subject to, the imprescriptible right of surface use in the nature of a servitude in favor of the Department of Natural Resources, including its Offices and Commissions, for the sole purpose of implementing, constructing, servicing and maintaining approved coastal zone management and/or restoration projects. Utilization of any and all rights derived under this lease by the mineral lessee, its agents, successors or assigns, shall not interfere with nor hinder the reasonable surface use by the

Department of Natural Resources, its Offices or Commissions, as herein above reserved.

NOTE: This tract is located in an area designated by the Louisiana Legislature or the Wildlife and Fisheries Commission as a Public Oyster Seed Ground, Reservation, or area of Calcasieu or Sabine Lake. Proposed projects occurring in these areas will be evaluated on a case by case basis by Louisiana Department of Wildlife & Fisheries. Modifications to proposed project features including, but not limited to, access routes, well sites, flowlines, and appurtenant structures maybe required by the Louisiana Department of Wildlife and Fisheries. In addition, compensatory mitigation will be required to offset unavoidable habitat impacts.

Applicant: THEOPHILUS OIL, GAS & LAND SERVICES, LLC

Bidder	Cash Payment	Price/Acre	Rental	Oil	Gas	Other

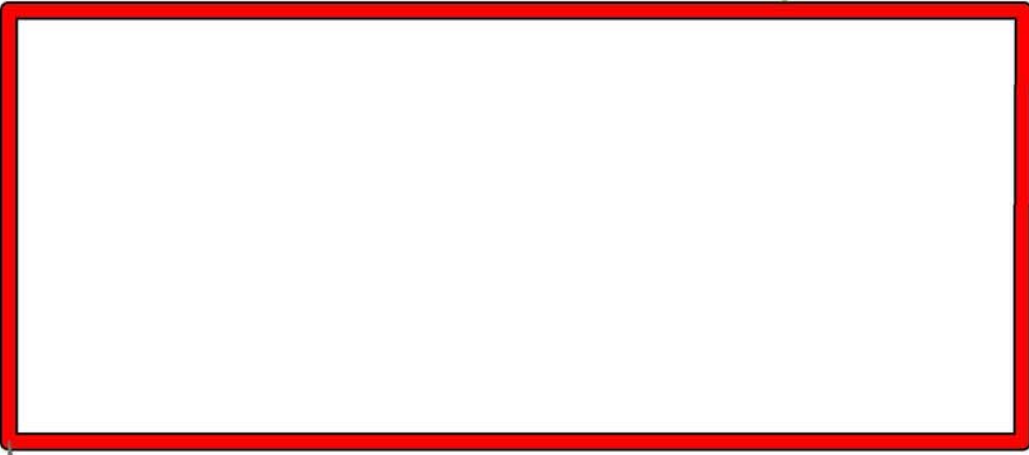
**Legend**  
13080031  
Active\_Leases

IBERIA PARISH

VERMILION BAY



P.O.B.



SL 1706

SL 1706

**TRACT 43405 - Iberia Parish, Louisiana**

All of the lands now or formerly constituting the beds and bottoms of all water bodies of every nature and description as to which title is vested in the State of Louisiana, together with all islands arising therein and other lands formed by accretion or by reliction, where allowed by law, excepting tax adjudicated lands, and not presently under mineral lease on August 14, 2013, situated in Iberia Parish, Louisiana, and more particularly described as follows: Beginning at a point having Coordinates of X = 1,868,767.65 and Y = 349,002.93; thence East 7,876.34 feet to a point having Coordinates of X = 1,876,643.99 and Y = 349,002.93; thence South 9,865.57 feet to the Northwest corner of State Lease No. 20378, having Coordinates of X = 1,876,643.99 and Y = 339,137.36; thence South 2,288.67 feet along the West boundary of said State Lease No. 20378 to its Southwest corner also being a point on the North boundary of State Lease No. 1706, as amended, having Coordinates of X = 1,876,643.99 and Y = 336,848.69; thence North 89 degrees 45 minutes 52 seconds West 7,876.41 feet along the North boundary of said State Lease No. 1706 to a Northwest corner having Coordinates of X = 1,868,767.65 and Y = 336,881.10; thence North 12,121.83 feet to the point of beginning, containing approximately **2,194.75 acres**, all as more particularly outlined on a plat on file in the Office of Mineral Resources, Department of Natural Resources. All bearings, distances and coordinates are based on Louisiana Coordinate System of 1927, (North or South Zone), where applicable.

NOTE: The above description of the Tract nominated for lease has been provided and corrected, where required, exclusively by the nomination party. Any mineral lease selected from this Tract and awarded by the Louisiana State Mineral and Energy Board shall be without warranty of any kind, either express, implied, or statutory, including, but not limited to, the implied warranties of merchantability and fitness for a particular purpose. Should the mineral lease awarded by the Louisiana State Mineral and Energy Board be subsequently modified, cancelled or abrogated due to the existence of conflicting leases, operating agreements, private claims or other future obligations or conditions which may affect all or any portion of the leased Tract, it shall not relieve the Lessee of the obligation to pay any bonus due thereon to the Louisiana State Mineral and Energy Board, nor shall the Louisiana State Mineral and Energy Board be obligated to refund any consideration paid by the Lessor prior to such modification, cancellation, or abrogation, including, but not limited to, bonuses, rentals and royalties.

NOTE: The State of Louisiana does hereby reserve, and this lease shall be subject to, the imprescriptible right of surface use in the nature of a servitude in favor of the Department of Natural Resources, including its Offices and Commissions, for the sole purpose of implementing, constructing, servicing and maintaining approved coastal zone management and/or restoration projects. Utilization of any and all rights derived under this lease by the mineral lessee, its agents, successors or assigns, shall not interfere with nor hinder the reasonable surface use by the

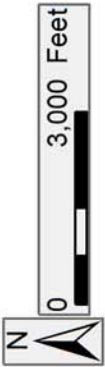
Department of Natural Resources, its Offices or Commissions, as herein above reserved.

NOTE: This tract is located in an area designated by the Louisiana Legislature or the Wildlife and Fisheries Commission as a Public Oyster Seed Ground, Reservation, or area of Calcasieu or Sabine Lake. Proposed projects occurring in these areas will be evaluated on a case by case basis by Louisiana Department of Wildlife & Fisheries. Modifications to proposed project features including, but not limited to, access routes, well sites, flowlines, and appurtenant structures maybe required by the Louisiana Department of Wildlife and Fisheries. In addition, compensatory mitigation will be required to offset unavoidable habitat impacts.

Applicant: THEOPHILUS OIL, GAS & LAND SERVICES, LLC

Bidder	Cash Payment	Price/Acre	Rental	Oil	Gas	Other

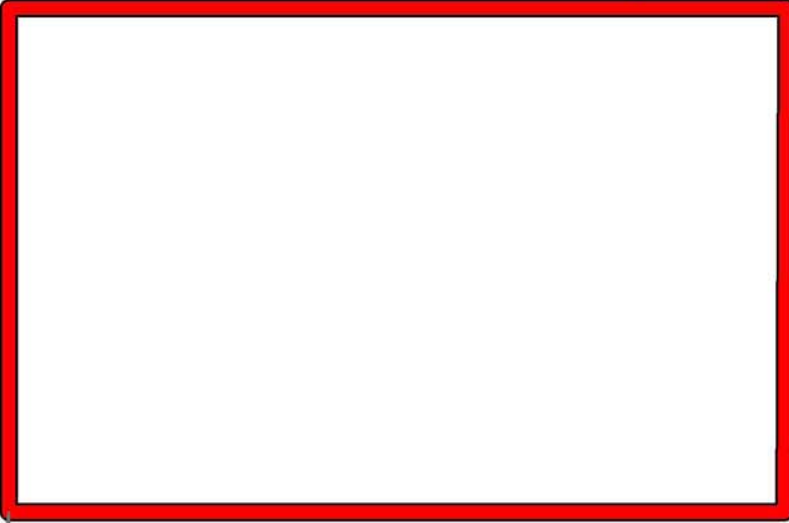
**Legend**  
13080032  
Active\_Leases



IBERIA PARISH

VERMILION BAY

P.O.B.



SL 20378

SL 1706





**TRACT 43406 - Iberia Parish, Louisiana**

All of the lands now or formerly constituting the beds and bottoms of all water bodies of every nature and description as to which title is vested in the State of Louisiana, together with all islands arising therein and other lands formed by accretion or by reliction, where allowed by law, excepting tax adjudicated lands, and not presently under mineral lease on August 14, 2013, situated in Iberia Parish, Louisiana, and more particularly described as follows: Beginning at a point having Coordinates of X = 1,876,643.99 and Y = 349,002.93; thence East 5,767.99 feet to a point having Coordinates of X = 1,882,411.98 and Y = 349,002.93; thence South 10,242.69 feet to a point on the Northern boundary of State Lease No. 19139, having Coordinates of X = 1,882,411.98 and Y = 338,760.24; thence North 89 degrees 45 minutes 52 seconds West 3,866.00 feet along said North line of said State Lease No. 19139 to a point on the East Boundary of State Lease No. 20378, having Coordinates of X = 1,878,546.01 and Y = 338,776.13; thence along the boundary of said State Lease No. 20378 the following courses and distances: North 00 degrees 15 minutes 30 seconds East 353.40 feet to a point having Coordinates of X = 1,878,547.60 and Y = 339,129.53 and North 89 degrees 45 minutes 52 seconds West 1,903.63 feet to its Northwest corner, having Coordinates of X = 1,876,643.99 and Y = 339,137.36; thence North 9,865.57 feet to the point of beginning, containing approximately **1,339.28 acres**, all as more particularly outlined on a plat on file in the Office of Mineral Resources, Department of Natural Resources. All bearings, distances and coordinates are based on Louisiana Coordinate System of 1927, (North or South Zone), where applicable.

NOTE: The above description of the Tract nominated for lease has been provided and corrected, where required, exclusively by the nomination party. Any mineral lease selected from this Tract and awarded by the Louisiana State Mineral and Energy Board shall be without warranty of any kind, either express, implied, or statutory, including, but not limited to, the implied warranties of merchantability and fitness for a particular purpose. Should the mineral lease awarded by the Louisiana State Mineral and Energy Board be subsequently modified, cancelled or abrogated due to the existence of conflicting leases, operating agreements, private claims or other future obligations or conditions which may affect all or any portion of the leased Tract, it shall not relieve the Lessee of the obligation to pay any bonus due thereon to the Louisiana State Mineral and Energy Board, nor shall the Louisiana State Mineral and Energy Board be obligated to refund any consideration paid by the Lessor prior to such modification, cancellation, or abrogation, including, but not limited to, bonuses, rentals and royalties.

NOTE: The State of Louisiana does hereby reserve, and this lease shall be subject to, the imprescriptible right of surface use in the nature of a servitude in favor of the Department of Natural Resources, including its Offices and Commissions, for the sole purpose of implementing, constructing, servicing and maintaining approved coastal zone management

and/or restoration projects. Utilization of any and all rights derived under this lease by the mineral lessee, its agents, successors or assigns, shall not interfere with nor hinder the reasonable surface use by the Department of Natural Resources, its Offices or Commissions, as herein above reserved.

NOTE: This tract is located in an area designated by the Louisiana Legislature or the Wildlife and Fisheries Commission as a Public Oyster Seed Ground, Reservation, or area of Calcasieu or Sabine Lake. Proposed projects occurring in these areas will be evaluated on a case by case basis by Louisiana Department of Wildlife & Fisheries. Modifications to proposed project features including, but not limited to, access routes, well sites, flowlines, and appurtenant structures maybe required by the Louisiana Department of Wildlife and Fisheries. In addition, compensatory mitigation will be required to offset unavoidable habitat impacts.

Applicant: THEOPHILUS OIL, GAS & LAND SERVICES, LLC

Bidder	Cash Payment	Price/Acre	Rental	Oil	Gas	Other

**Legend**  
13080021  
Active\_Leases

IBERIA PARISH

VERMILION BAY

P.O.B.

SL 20378

SL 19139



**TRACT 43407 - Iberia and St. Mary Parishes, Louisiana**

All of the lands now or formerly constituting the beds and bottoms of all water bodies of every nature and description as to which title is vested in the State of Louisiana, together with all islands arising therein and other lands formed by accretion or by reliction, where allowed by law, excepting tax adjudicated lands, and not presently under mineral lease on August 14, 2013, situated in Iberia and St. Mary Parishes, Louisiana, and more particularly described as follows: Beginning at a point having Coordinates of X = 1,882,411.98 and Y = 349,002.93; thence East 6,588.02 feet to a point having Coordinates of X = 1,889,000.00 and Y = 349,002.93; thence South 14,141.82 feet to a point having Coordinates of X = 1,889,000.00 and Y = 334,861.11; thence West 4,566.68 feet to a point on the East boundary of State Lease No. 19139, having Coordinates of X = 1,884,433.32 and Y = 334,861.11; thence along the boundary of said State Lease No. 19139 the following courses and distances: North 00 degrees 14 minutes 08 seconds East 1,963.91 feet to a point having Coordinates of X = 1,884,441.40 and Y = 336,825.01 and North 00 degrees 13 minutes 53 seconds East 1,935.25 feet to a point having Coordinates of X = 1,884,449.21 and Y = 338,760.24; thence West 2,037.23 feet to a point having Coordinates of X = 1,882,411.98 and Y = 338,760.24; thence North 10,242.69 feet to the point of beginning, containing approximately **1,957.16 acres**, all as more particularly outlined on a plat on file in the Office of Mineral Resources, Department of Natural Resources. All bearings, distances and coordinates are based on Louisiana Coordinate System of 1927, (North or South Zone), where applicable.

NOTE: The above description of the Tract nominated for lease has been provided and corrected, where required, exclusively by the nomination party. Any mineral lease selected from this Tract and awarded by the Louisiana State Mineral and Energy Board shall be without warranty of any kind, either express, implied, or statutory, including, but not limited to, the implied warranties of merchantability and fitness for a particular purpose. Should the mineral lease awarded by the Louisiana State Mineral and Energy Board be subsequently modified, cancelled or abrogated due to the existence of conflicting leases, operating agreements, private claims or other future obligations or conditions which may affect all or any portion of the leased Tract, it shall not relieve the Lessee of the obligation to pay any bonus due thereon to the Louisiana State Mineral and Energy Board, nor shall the Louisiana State Mineral and Energy Board be obligated to refund any consideration paid by the Lessor prior to such modification, cancellation, or abrogation, including, but not limited to, bonuses, rentals and royalties.

NOTE: The State of Louisiana does hereby reserve, and this lease shall be subject to, the imprescriptible right of surface use in the nature of a servitude in favor of the Department of Natural Resources, including its Offices and Commissions, for the sole purpose of implementing, constructing, servicing and maintaining approved coastal zone management and/or restoration projects. Utilization of any and all rights derived

under this lease by the mineral lessee, its agents, successors or assigns, shall not interfere with nor hinder the reasonable surface use by the Department of Natural Resources, its Offices or Commissions, as herein above reserved.

NOTE: This tract is located in an area designated by the Louisiana Legislature or the Wildlife and Fisheries Commission as a Public Oyster Seed Ground, Reservation, or area of Calcasieu or Sabine Lake. Proposed projects occurring in these areas will be evaluated on a case by case basis by Louisiana Department of Wildlife & Fisheries. Modifications to proposed project features including, but not limited to, access routes, well sites, flowlines, and appurtenant structures maybe required by the Louisiana Department of Wildlife and Fisheries. In addition, compensatory mitigation will be required to offset unavoidable habitat impacts.

Applicant: THEOPHILUS OIL, GAS & LAND SERVICES, LLC

Bidder	Cash Payment	Price/Acre	Rental	Oil	Gas	Other

**Legend**

- 13080022
- Active\_Leases
- Counties

