

TRACT 43408 - Iberia and St. Mary Parishes, Louisiana

All of the lands now or formerly constituting the beds and bottoms of all water bodies of every nature and description as to which title is vested in the State of Louisiana, together with all islands arising therein and other lands formed by accretion or by reliction, where allowed by law, excepting tax adjudicated lands, and not presently under mineral lease on August 14, 2013, situated in Iberia and St. Mary Parishes, Louisiana, and more particularly described as follows: Beginning at a point having Coordinates of X = 1,889,000.00 and Y = 349,002.93; thence East 7,000.00 feet to a point having Coordinates of X = 1,896,000.00 and Y = 349,002.93; thence South 14,141.82 feet to a point having Coordinates of X = 1,896,000.00 and Y = 334,861.11; thence West 7,000.00 feet to a point having Coordinates of X = 1,889,000.00 and Y = 334,861.11; thence North 14,141.82 feet to the point of beginning, containing approximately **2,272.56 acres**, all as more particularly outlined on a plat on file in the Office of Mineral Resources, Department of Natural Resources. All bearings, distances and coordinates are based on Louisiana Coordinate System of 1927, (North or South Zone), where applicable.

NOTE: The above description of the Tract nominated for lease has been provided and corrected, where required, exclusively by the nomination party. Any mineral lease selected from this Tract and awarded by the Louisiana State Mineral and Energy Board shall be without warranty of any kind, either express, implied, or statutory, including, but not limited to, the implied warranties of merchantability and fitness for a particular purpose. Should the mineral lease awarded by the Louisiana State Mineral and Energy Board be subsequently modified, cancelled or abrogated due to the existence of conflicting leases, operating agreements, private claims or other future obligations or conditions which may affect all or any portion of the leased Tract, it shall not relieve the Lessee of the obligation to pay any bonus due thereon to the Louisiana State Mineral and Energy Board, nor shall the Louisiana State Mineral and Energy Board be obligated to refund any consideration paid by the Lessor prior to such modification, cancellation, or abrogation, including, but not limited to, bonuses, rentals and royalties.

NOTE: The State of Louisiana does hereby reserve, and this lease shall be subject to, the imprescriptible right of surface use in the nature of a servitude in favor of the Department of Natural Resources, including its Offices and Commissions, for the sole purpose of implementing, constructing, servicing and maintaining approved coastal zone management and/or restoration projects. Utilization of any and all rights derived under this lease by the mineral lessee, its agents, successors or assigns, shall not interfere with nor hinder the reasonable surface use by the Department of Natural Resources, its Offices or Commissions, as herein above reserved.

NOTE: This tract is located in an area designated by the Louisiana Legislature or the Wildlife and Fisheries Commission as a Public Oyster Seed Ground, Reservation, or area of Calcasieu or Sabine Lake. Proposed

projects occurring in these areas will be evaluated on a case by case basis by Louisiana Department of Wildlife & Fisheries. Modifications to proposed project features including, but not limited to, access routes, well sites, flowlines, and appurtenant structures maybe required by the Louisiana Department of Wildlife and Fisheries. In addition, compensatory mitigation will be required to offset unavoidable habitat impacts.

Applicant: THEOPHILUS OIL, GAS & LAND SERVICES, LLC

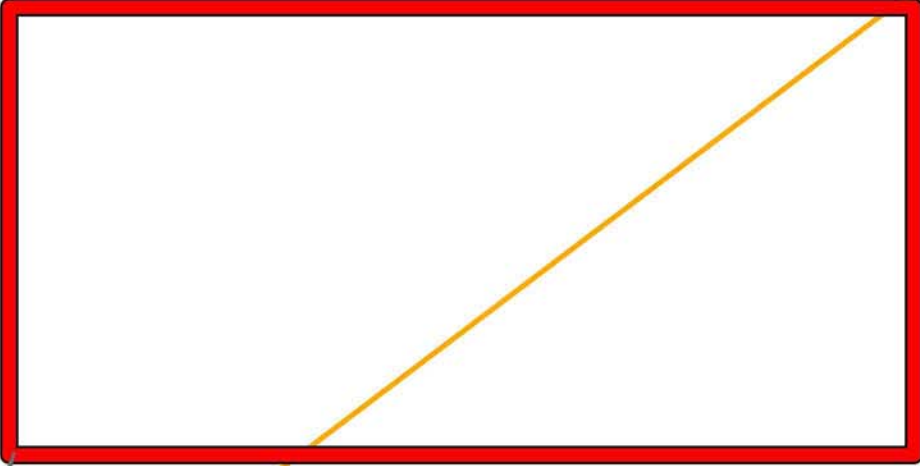
Bidder	Cash Payment	Price/Acre	Rental	Oil	Gas	Other

Legend
13080023
Counties

ST MARY PARISH

ATCHAFALAYA BAY

P.O.B.



IBERIA PARISH

VERMILION BAY

N
0 3,000 Feet

TRACT 43409 - Iberia and St. Mary Parishes, Louisiana

All of the lands now or formerly constituting the beds and bottoms of all water bodies of every nature and description as to which title is vested in the State of Louisiana, together with all islands arising therein and other lands formed by accretion or by reliction, where allowed by law, excepting tax adjudicated lands, and not presently under mineral lease on August 14, 2013, situated in Iberia and St. Mary Parishes, Louisiana, and more particularly described as follows: Beginning at a point having Coordinates of X = 1,896,000.00 and Y = 349,002.93; thence East 7,000.00 feet to a point having Coordinates of X = 1,903,000.00 and Y = 349,002.93; thence South 6,502.93 feet to the Northwest corner of State Lease No. 16381 having Coordinates of X = 1,903,000.00 and Y = 342,500.00; thence along the boundary of said State Lease No. 16381 the following courses and distances: South 4,850.00 feet to a point having Coordinates of X = 1,903,000.00 and Y = 337,650.00 and East 1,617.18 feet to a point on the West boundary of State Lease No. 10251, having Coordinates of X = 1,904,617.18 and Y = 337,650.00; thence South 00 degrees 06 minutes 10 seconds West 2,788.89 feet along said West boundary of said State Lease No. 10251 to its Southwest corner, having Coordinates of X = 1,904,612.18 and Y = 334,861.11, thence West 8,612.18 feet to a point having Coordinates of X = 1,896,000.00 and Y = 334,861.11; thence North 14,141.82 feet to the point of beginning, containing approximately **2,375.94 acres**, all as more particularly outlined on a plat on file in the Office of Mineral Resources, Department of Natural Resources. All bearings, distances and coordinates are based on Louisiana Coordinate System of 1927, (North or South Zone), where applicable.

NOTE: The above description of the Tract nominated for lease has been provided and corrected, where required, exclusively by the nomination party. Any mineral lease selected from this Tract and awarded by the Louisiana State Mineral and Energy Board shall be without warranty of any kind, either express, implied, or statutory, including, but not limited to, the implied warranties of merchantability and fitness for a particular purpose. Should the mineral lease awarded by the Louisiana State Mineral and Energy Board be subsequently modified, cancelled or abrogated due to the existence of conflicting leases, operating agreements, private claims or other future obligations or conditions which may affect all or any portion of the leased Tract, it shall not relieve the Lessee of the obligation to pay any bonus due thereon to the Louisiana State Mineral and Energy Board, nor shall the Louisiana State Mineral and Energy Board be obligated to refund any consideration paid by the Lessor prior to such modification, cancellation, or abrogation, including, but not limited to, bonuses, rentals and royalties.

NOTE: The State of Louisiana does hereby reserve, and this lease shall be subject to, the imprescriptible right of surface use in the nature of a servitude in favor of the Department of Natural Resources, including its Offices and Commissions, for the sole purpose of implementing, constructing, servicing and maintaining approved coastal zone management

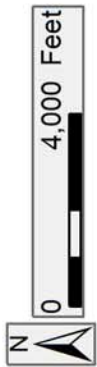
and/or restoration projects. Utilization of any and all rights derived under this lease by the mineral lessee, its agents, successors or assigns, shall not interfere with nor hinder the reasonable surface use by the Department of Natural Resources, its Offices or Commissions, as herein above reserved.

NOTE: This tract is located in an area designated by the Louisiana Legislature or the Wildlife and Fisheries Commission as a Public Oyster Seed Ground, Reservation, or area of Calcasieu or Sabine Lake. Proposed projects occurring in these areas will be evaluated on a case by case basis by Louisiana Department of Wildlife & Fisheries. Modifications to proposed project features including, but not limited to, access routes, well sites, flowlines, and appurtenant structures maybe required by the Louisiana Department of Wildlife and Fisheries. In addition, compensatory mitigation will be required to offset unavoidable habitat impacts.

Applicant: THEOPHILUS OIL, GAS & LAND SERVICES, LLC

Bidder	Cash Payment	Price/Acre	Rental	Oil	Gas	Other

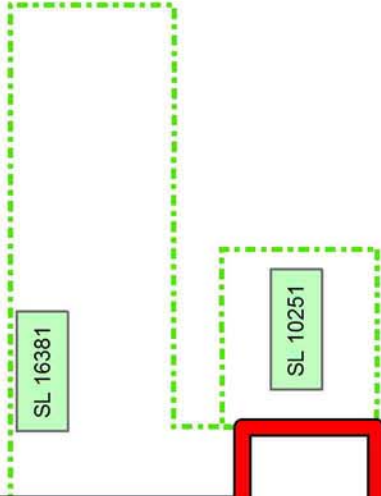
Legend
13080024
Active_Leases



ST MARY PARISH

P.O.B.

ATCHAFALAYA BAY



VERMILION BAY

TRACT 43410 - Iberia Parish, Louisiana

All of the lands now or formerly constituting the beds and bottoms of all water bodies of every nature and description as to which title is vested in the State of Louisiana, together with all islands arising therein and other lands formed by accretion or by reliction, where allowed by law, excepting tax adjudicated lands, and not presently under mineral lease on August 14, 2013, situated in Iberia Parish, Louisiana, and more particularly described as follows: Beginning at a point on the East boundary of State Lease No. 19139, having Coordinates of X = 1,884,433.32 and Y = 334,861.11; thence East 4,566.68 feet to a point having Coordinates of X = 1,889,000.00 and Y = 334,861.11; thence South 11,260.87 feet to a point having Coordinates of X = 1,889,000.00 and Y = 323,600.24; thence North 89 degrees 44 minutes 23 seconds West 6,769.92 feet to a point on the boundary of a portion of Operating Agreement No. 302, also being a point on the boundary of State Lease No. 3317, as amended, having Coordinates of X = 1,882,230.15 and Y = 323,630.98; thence along the boundary of said Operating Agreement No. 302 the following courses and distances: North 81 degrees 21 minutes 28 seconds East 525.84 feet to a point having Coordinates of X = 1,882,750.02 and Y = 323,710.00, North 75 degrees 57 minutes 49 seconds East 453.54 feet to a point having Coordinates of X = 1,883,190.02 and Y = 323,820.00, North 59 degrees 37 minutes 15 seconds East 336.15 feet to a point having Coordinates of X = 1,883,480.02 and Y = 323,990.00, North 52 degrees 51 minutes 09 seconds East 414.00 feet to a point having Coordinates of X = 1,883,810.01 and Y = 324,240.00, North 33 degrees 06 minutes 41 seconds East 549.18 feet to a point having Coordinates of X = 1,884,110.01 and Y = 324,700.00, North 24 degrees 46 minutes 32 seconds East 572.70 feet to a point having Coordinates of X = 1,884,350.01 and Y = 325,219.99, North 14 degrees 02 minutes 11 seconds East 536.00 feet to a point having Coordinates of X = 1,884,480.01 and Y = 325,739.99 and North 06 degrees 00 minutes 33 seconds East 701.98 feet to a point on the boundary of State Lease No. 2276, as amended, having Coordinates of X = 1,884,553.50 and Y = 326,438.11; thence along the boundary of said State Lease No. 2276 the following courses and distances: South 89 degrees 45 minutes 54 seconds East 790.01 feet to a point having Coordinates of X = 1,885,343.50 and Y = 326,434.87, North 3,458.33 feet to a point having Coordinates of X = 1,885,343.50 and Y = 329,893.20, East 1,356.50 feet to a point having Coordinates of X = 1,886,700.00 and Y = 329,893.20, North 2,326.80 feet to a point having Coordinates of X = 1,886,700.00 and Y = 332,220.00, North 39 degrees 14 minutes 55 seconds East 797.08 feet to a point having Coordinates of X = 1,887,204.31 and Y = 332,837.27 and North 89 degrees 45 minutes 52 seconds West 1,835.28 feet to a point on the boundary of a portion of Operating Agreement No. 302 having Coordinates of X = 1,885,369.04 and Y = 332,844.80; thence along the boundary of said Operating Agreement No. 302 the following courses and distances: North 38 degrees 53 minutes 02 seconds West 173.69 feet to a point having Coordinates of X = 1,885,260.01 and Y = 332,980.00, North 53 degrees 44 minutes 46 seconds West 372.02 feet to a point having Coordinates of X = 1,884,960.01 and Y = 333,200.00, North 64 degrees 26 minutes 24 seconds West 509.90 feet to a point having

Coordinates of X = 1,884,500.01 and Y = 333,420.00 and North 73 degrees 17 minutes 59 seconds West 75.72 feet to a point on the East boundary of said State Lease No. 19139, having Coordinates of X = 1,884,427.48 and Y = 333,441.76; thence North 00 degrees 14 minutes 09 seconds East 1,419.36 feet along said East line of said State Lease No. 19139, to the point of beginning, containing approximately **965.17 acres**, all as more particularly outlined on a plat on file in the Office of Mineral Resources, Department of Natural Resources. All bearings, distances and coordinates are based on Louisiana Coordinate System of 1927, (North or South Zone), where applicable.

NOTE: The above description of the Tract nominated for lease has been provided and corrected, where required, exclusively by the nomination party. Any mineral lease selected from this Tract and awarded by the Louisiana State Mineral and Energy Board shall be without warranty of any kind, either express, implied, or statutory, including, but not limited to, the implied warranties of merchantability and fitness for a particular purpose. Should the mineral lease awarded by the Louisiana State Mineral and Energy Board be subsequently modified, cancelled or abrogated due to the existence of conflicting leases, operating agreements, private claims or other future obligations or conditions which may affect all or any portion of the leased Tract, it shall not relieve the Lessee of the obligation to pay any bonus due thereon to the Louisiana State Mineral and Energy Board, nor shall the Louisiana State Mineral and Energy Board be obligated to refund any consideration paid by the Lessor prior to such modification, cancellation, or abrogation, including, but not limited to, bonuses, rentals and royalties.

NOTE: The above described tract may be in the vicinity of existing shell reefs where drilling and dredging operations must be conducted in strict conformity with the regulations adopted by the Louisiana Department of Wildlife and Fisheries and/or the U.S. Corps of Engineers, U.S. Army.

NOTE: The State of Louisiana does hereby reserve, and this lease shall be subject to, the imprescriptible right of surface use in the nature of a servitude in favor of the Department of Natural Resources, including its Offices and Commissions, for the sole purpose of implementing, constructing, servicing and maintaining approved coastal zone management and/or restoration projects. Utilization of any and all rights derived under this lease by the mineral lessee, its agents, successors or assigns, shall not interfere with nor hinder the reasonable surface use by the Department of Natural Resources, its Offices or Commissions, as herein above reserved.

NOTE: This tract is located in an area designated by the Louisiana Legislature or the Wildlife and Fisheries Commission as a Public Oyster Seed Ground, Reservation, or area of Calcasieu or Sabine Lake. Proposed projects occurring in these areas will be evaluated on a case by case basis by Louisiana Department of Wildlife & Fisheries. Modifications to

proposed project features including, but not limited to, access routes, well sites, flowlines, and appurtenant structures maybe required by the Louisiana Department of Wildlife and Fisheries. In addition, compensatory mitigation will be required to offset unavoidable habitat impacts.

Applicant: THEOPHILUS OIL, GAS & LAND SERVICES, LLC

Bidder	Cash Payment	Price/Acre	Rental	Oil	Gas	Other

Legend

13080030

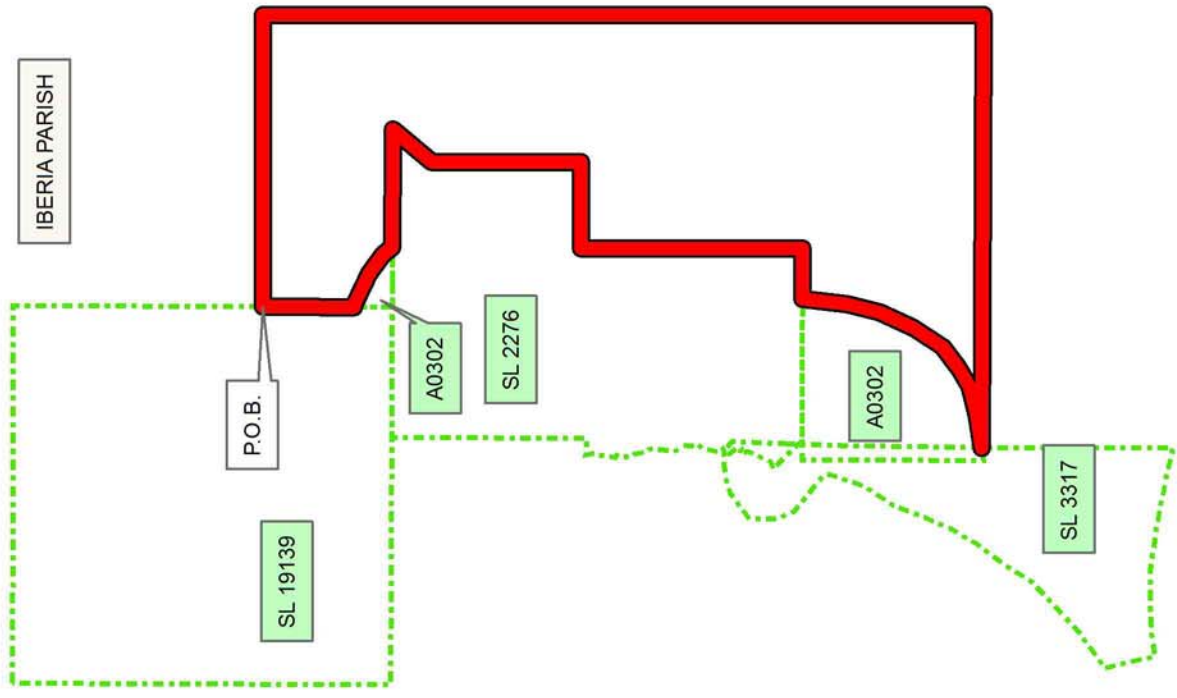
Active_Leases



0 3,000 Feet

IBERIA PARISH

VERMILION BAY



TRACT 43411 - Iberia Parish, Louisiana

All of the lands now or formerly constituting the beds and bottoms of all water bodies of every nature and description as to which title is vested in the State of Louisiana, together with all islands arising therein and other lands formed by accretion or by reliction, where allowed by law, excepting tax adjudicated lands, and not presently under mineral lease on August 14, 2013, situated in Iberia Parish, Louisiana, and more particularly described as follows: Beginning at a point having Coordinates of X = 1,889,000.00 and Y = 334,861.11; thence East 7,000.00 feet to a point having Coordinates of X = 1,896,000.00 and Y = 334,861.11; thence South 11,260.87 feet to a point having Coordinates of X = 1,896,000.00 and Y = 323,600.24; thence West 7,000.00 feet to a point having Coordinates of X = 1,889,000.00 and Y = 323,600.24; thence North 11,260.87 feet to the point of beginning, containing approximately **1,809.60 acres**, all as more particularly outlined on a plat on file in the Office of Mineral Resources, Department of Natural Resources. All bearings, distances and coordinates are based on Louisiana Coordinate System of 1927, (North or South Zone), where applicable.

NOTE: The above description of the Tract nominated for lease has been provided and corrected, where required, exclusively by the nomination party. Any mineral lease selected from this Tract and awarded by the Louisiana State Mineral and Energy Board shall be without warranty of any kind, either express, implied, or statutory, including, but not limited to, the implied warranties of merchantability and fitness for a particular purpose. Should the mineral lease awarded by the Louisiana State Mineral and Energy Board be subsequently modified, cancelled or abrogated due to the existence of conflicting leases, operating agreements, private claims or other future obligations or conditions which may affect all or any portion of the leased Tract, it shall not relieve the Lessee of the obligation to pay any bonus due thereon to the Louisiana State Mineral and Energy Board, nor shall the Louisiana State Mineral and Energy Board be obligated to refund any consideration paid by the Lessor prior to such modification, cancellation, or abrogation, including, but not limited to, bonuses, rentals and royalties.

NOTE: The State of Louisiana does hereby reserve, and this lease shall be subject to, the imprescriptible right of surface use in the nature of a servitude in favor of the Department of Natural Resources, including its Offices and Commissions, for the sole purpose of implementing, constructing, servicing and maintaining approved coastal zone management and/or restoration projects. Utilization of any and all rights derived under this lease by the mineral lessee, its agents, successors or assigns, shall not interfere with nor hinder the reasonable surface use by the Department of Natural Resources, its Offices or Commissions, as herein above reserved.

NOTE: This tract is located in an area designated by the Louisiana Legislature or the Wildlife and Fisheries Commission as a Public Oyster

Seed Ground, Reservation, or area of Calcasieu or Sabine Lake. Proposed projects occurring in these areas will be evaluated on a case by case basis by Louisiana Department of Wildlife & Fisheries. Modifications to proposed project features including, but not limited to, access routes, well sites, flowlines, and appurtenant structures maybe required by the Louisiana Department of Wildlife and Fisheries. In addition, compensatory mitigation will be required to offset unavoidable habitat impacts.

Applicant: THEOPHILUS OIL, GAS & LAND SERVICES, LLC

Bidder	Cash Payment	Price/Acre	Rental	Oil	Gas	Other

Legend
13080029

ST MARY PARISH

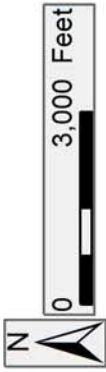
ATCHAFALAYA BAY

IBERIA PARISH

P.O.B.



VERMILION BAY



TRACT 43412 - Iberia and St. Mary Parishes, Louisiana

All of the lands now or formerly constituting the beds and bottoms of all water bodies of every nature and description as to which title is vested in the State of Louisiana, together with all islands arising therein and other lands formed by accretion or by reliction, where allowed by law, excepting tax adjudicated lands, and not presently under mineral lease on August 14, 2013, situated in Iberia and St. Mary Parishes, Louisiana, and more particularly described as follows: Beginning at a point having Coordinates of X = 1,896,000.00 and Y = 334,861.11; thence East 8,612.18 feet to the Southwest corner of State Lease No. 10251, as amended, having Coordinates of X = 1,904,612.18 and Y = 334,861.11; thence South 11,260.87 feet to a point having Coordinates of X = 1,904,612.18 and Y = 323,600.24; thence West 8,612.18 feet to a point having Coordinates of X = 1,896,000.00 and Y = 323,600.24; thence North 11,260.87 feet to the point of beginning, containing approximately **2,226.37 acres**, all as more particularly outlined on a plat on file in the Office of Mineral Resources, Department of Natural Resources. All bearings, distances and coordinates are based on Louisiana Coordinate System of 1927, (North or South Zone), where applicable.

NOTE: The above description of the Tract nominated for lease has been provided and corrected, where required, exclusively by the nomination party. Any mineral lease selected from this Tract and awarded by the Louisiana State Mineral and Energy Board shall be without warranty of any kind, either express, implied, or statutory, including, but not limited to, the implied warranties of merchantability and fitness for a particular purpose. Should the mineral lease awarded by the Louisiana State Mineral and Energy Board be subsequently modified, cancelled or abrogated due to the existence of conflicting leases, operating agreements, private claims or other future obligations or conditions which may affect all or any portion of the leased Tract, it shall not relieve the Lessee of the obligation to pay any bonus due thereon to the Louisiana State Mineral and Energy Board, nor shall the Louisiana State Mineral and Energy Board be obligated to refund any consideration paid by the Lessor prior to such modification, cancellation, or abrogation, including, but not limited to, bonuses, rentals and royalties.

NOTE: The State of Louisiana does hereby reserve, and this lease shall be subject to, the imprescriptible right of surface use in the nature of a servitude in favor of the Department of Natural Resources, including its Offices and Commissions, for the sole purpose of implementing, constructing, servicing and maintaining approved coastal zone management and/or restoration projects. Utilization of any and all rights derived under this lease by the mineral lessee, its agents, successors or assigns, shall not interfere with nor hinder the reasonable surface use by the Department of Natural Resources, its Offices or Commissions, as herein above reserved.

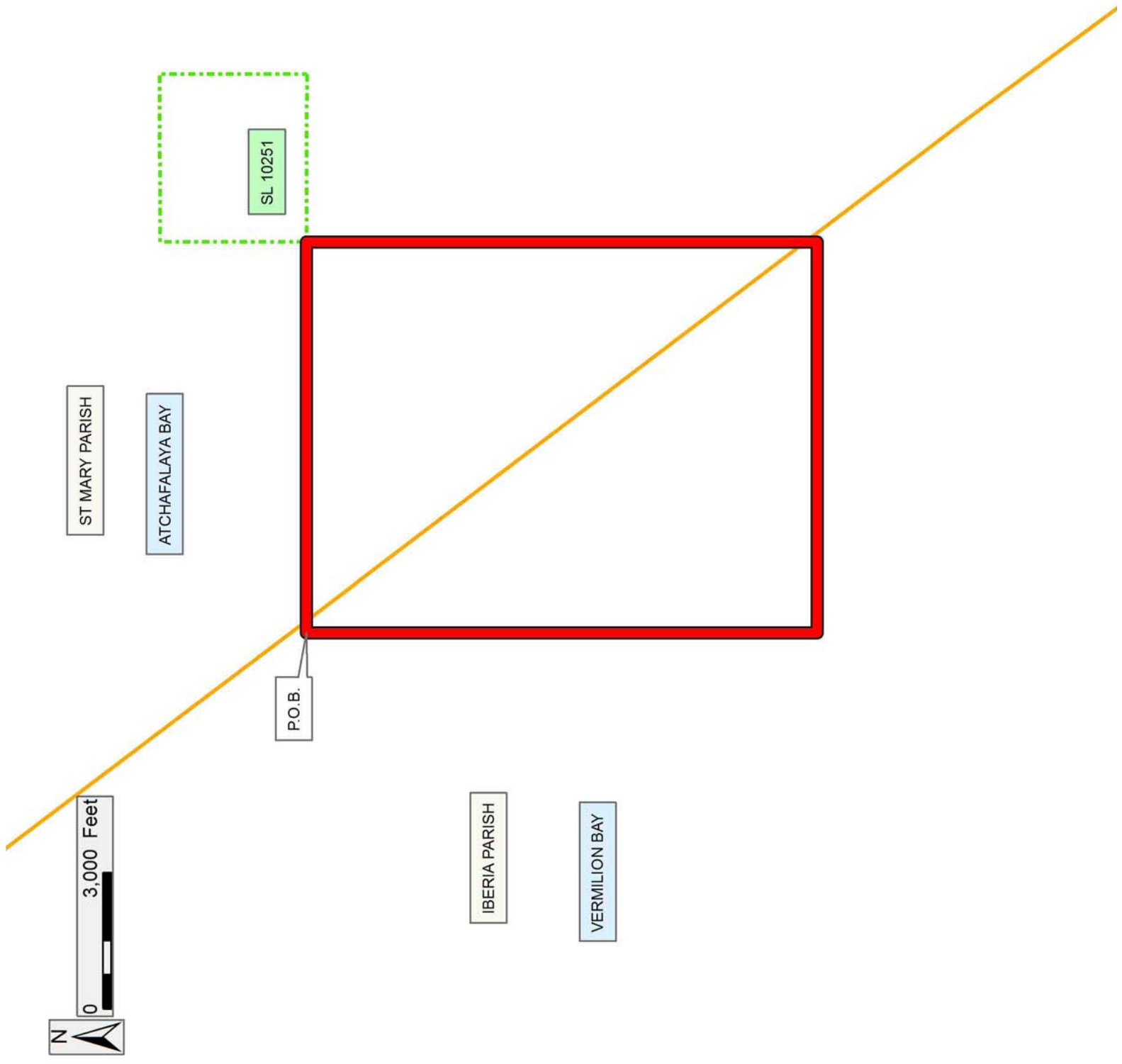
NOTE: This tract is located in an area designated by the Louisiana Legislature or the Wildlife and Fisheries Commission as a Public Oyster Seed Ground, Reservation, or area of Calcasieu or Sabine Lake. Proposed projects occurring in these areas will be evaluated on a case by case basis by Louisiana Department of Wildlife & Fisheries. Modifications to proposed project features including, but not limited to, access routes, well sites, flowlines, and appurtenant structures maybe required by the Louisiana Department of Wildlife and Fisheries. In addition, compensatory mitigation will be required to offset unavoidable habitat impacts.

Applicant: THEOPHILUS OIL, GAS & LAND SERVICES, LLC

Bidder	Cash Payment	Price/Acre	Rental	Oil	Gas	Other

Legend

- 13080028
- Active_Leases
- Counties



TRACT 43413 - Iberia and St. Mary Parishes, Louisiana

All of the lands now or formerly constituting the beds and bottoms of all water bodies of every nature and description as to which title is vested in the State of Louisiana, together with all islands arising therein and other lands formed by accretion or by reliction, where allowed by law, excepting tax adjudicated lands, and not presently under mineral lease on August 14, 2013, situated in Iberia and St. Mary Parishes, Louisiana, and more particularly described as follows: Beginning at the Southwest corner of State Lease No. 10251, as amended, having Coordinates of X = 1,904,612.18 and Y = 334,861.11; thence South 89 degrees 53 minutes 50 seconds East 3,701.55 feet along the South line of said State Lease No. 10251, to its Southeast corner, having Coordinates of X = 1,908,313.72 and Y = 334,854.47; thence South 11,254.23 feet to a point having Coordinates of X = 1,908,313.72 and Y = 323,600.24; thence West 3,701.54 feet to a point having Coordinates of X = 1,904,612.18 and Y = 323,600.24; thence North 11,260.87 feet to the point of beginning, containing approximately **956.62 acres**, all as more particularly outlined on a plat on file in the Office of Mineral Resources, Department of Natural Resources. All bearings, distances and coordinates are based on Louisiana Coordinate System of 1927, (North or South Zone), where applicable.

NOTE: The above description of the Tract nominated for lease has been provided and corrected, where required, exclusively by the nomination party. Any mineral lease selected from this Tract and awarded by the Louisiana State Mineral and Energy Board shall be without warranty of any kind, either express, implied, or statutory, including, but not limited to, the implied warranties of merchantability and fitness for a particular purpose. Should the mineral lease awarded by the Louisiana State Mineral and Energy Board be subsequently modified, cancelled or abrogated due to the existence of conflicting leases, operating agreements, private claims or other future obligations or conditions which may affect all or any portion of the leased Tract, it shall not relieve the Lessee of the obligation to pay any bonus due thereon to the Louisiana State Mineral and Energy Board, nor shall the Louisiana State Mineral and Energy Board be obligated to refund any consideration paid by the Lessor prior to such modification, cancellation, or abrogation, including, but not limited to, bonuses, rentals and royalties.

NOTE: The State of Louisiana does hereby reserve, and this lease shall be subject to, the imprescriptible right of surface use in the nature of a servitude in favor of the Department of Natural Resources, including its Offices and Commissions, for the sole purpose of implementing, constructing, servicing and maintaining approved coastal zone management and/or restoration projects. Utilization of any and all rights derived under this lease by the mineral lessee, its agents, successors or assigns, shall not interfere with nor hinder the reasonable surface use by the Department of Natural Resources, its Offices or Commissions, as herein above reserved.

NOTE: This tract is located in an area designated by the Louisiana Legislature or the Wildlife and Fisheries Commission as a Public Oyster Seed Ground, Reservation, or area of Calcasieu or Sabine Lake. Proposed projects occurring in these areas will be evaluated on a case by case basis by Louisiana Department of Wildlife & Fisheries. Modifications to proposed project features including, but not limited to, access routes, well sites, flowlines, and appurtenant structures maybe required by the Louisiana Department of Wildlife and Fisheries. In addition, compensatory mitigation will be required to offset unavoidable habitat impacts.

Applicant: THEOPHILUS OIL, GAS & LAND SERVICES, LLC

Bidder	Cash Payment	Price/Acre	Rental	Oil	Gas	Other

Legend

13080027

Active_Leases

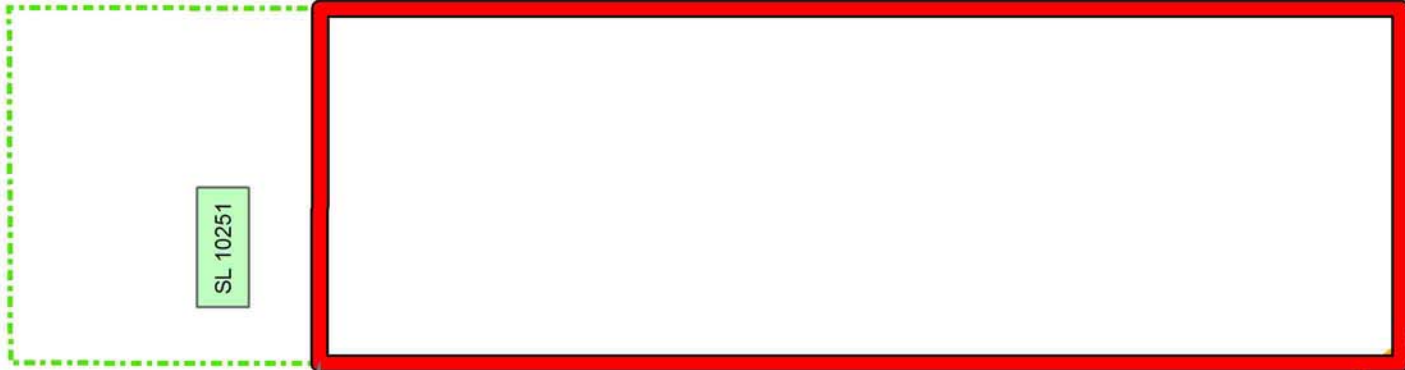
Counties



0 2,000 Feet

ST MARY PARISH

ATCHAFALAYA BAY



SL 10251

P.O.B.

IBERIA PARISH

VERMILION BAY

TRACT 43414 - St. Mary Parish, Louisiana

All of the lands now or formerly constituting the beds and bottoms of all water bodies of every nature and description as to which title is vested in the State of Louisiana, together with all islands arising therein and other lands formed by accretion or by reliction, where allowed by law, excepting tax adjudicated lands, and not presently under mineral lease on August 14, 2013, situated in St. Mary Parish, Louisiana, and more particularly described as follows: Beginning at the Southeast corner of State Lease No. 10251, as amended, having Coordinates of X = 1,908,313.72 and Y = 334,854.47; thence East 6,096.28 feet to a point having Coordinates of X = 1,914,410.00 and Y = 334,854.47; thence South 11,254.23 feet to a point having Coordinates of X = 1,914,410.00 and Y = 323,600.24; thence West 6,096.28 feet to a point having Coordinates of X = 1,908,313.72 and Y = 323,600.24; thence North 11,254.23 feet to the point of beginning, containing approximately **1,575.04 acres**, all as more particularly outlined on a plat on file in the Office of Mineral Resources, Department of Natural Resources. All bearings, distances and coordinates are based on Louisiana Coordinate System of 1927, (North or South Zone), where applicable.

NOTE: The above description of the Tract nominated for lease has been provided and corrected, where required, exclusively by the nomination party. Any mineral lease selected from this Tract and awarded by the Louisiana State Mineral and Energy Board shall be without warranty of any kind, either express, implied, or statutory, including, but not limited to, the implied warranties of merchantability and fitness for a particular purpose. Should the mineral lease awarded by the Louisiana State Mineral and Energy Board be subsequently modified, cancelled or abrogated due to the existence of conflicting leases, operating agreements, private claims or other future obligations or conditions which may affect all or any portion of the leased Tract, it shall not relieve the Lessee of the obligation to pay any bonus due thereon to the Louisiana State Mineral and Energy Board, nor shall the Louisiana State Mineral and Energy Board be obligated to refund any consideration paid by the Lessor prior to such modification, cancellation, or abrogation, including, but not limited to, bonuses, rentals and royalties.

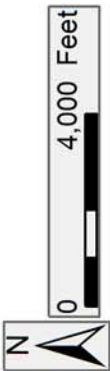
NOTE: The State of Louisiana does hereby reserve, and this lease shall be subject to, the imprescriptible right of surface use in the nature of a servitude in favor of the Department of Natural Resources, including its Offices and Commissions, for the sole purpose of implementing, constructing, servicing and maintaining approved coastal zone management and/or restoration projects. Utilization of any and all rights derived under this lease by the mineral lessee, its agents, successors or assigns, shall not interfere with nor hinder the reasonable surface use by the Department of Natural Resources, its Offices or Commissions, as herein above reserved.

NOTE: This tract is located in an area designated by the Louisiana Legislature or the Wildlife and Fisheries Commission as a Public Oyster Seed Ground, Reservation, or area of Calcasieu or Sabine Lake. Proposed projects occurring in these areas will be evaluated on a case by case basis by Louisiana Department of Wildlife & Fisheries. Modifications to proposed project features including, but not limited to, access routes, well sites, flowlines, and appurtenant structures maybe required by the Louisiana Department of Wildlife and Fisheries. In addition, compensatory mitigation will be required to offset unavoidable habitat impacts.

Applicant: THEOPHILUS OIL, GAS & LAND SERVICES, LLC

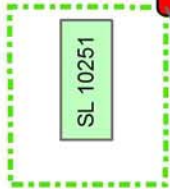
Bidder	Cash Payment	Price/Acre	Rental	Oil	Gas	Other

Legend
13080026
Active_Leases

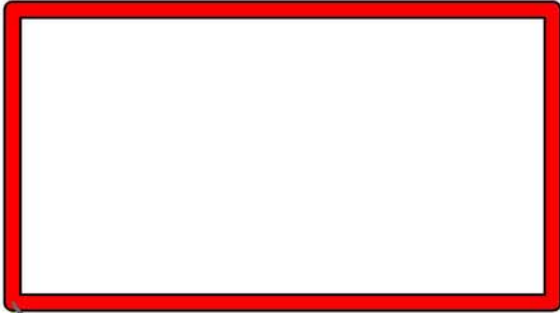


ST MARY PARISH

ATCHAFALAYA BAY



P.O.B.



TRACT 43415 - Plaquemines Parish, Louisiana

All of the lands now or formerly constituting the beds and bottoms of all water bodies of every nature and description as to which title is vested in the State of Louisiana, together with all islands arising therein and other lands formed by accretion or by reliction, where allowed by law, excepting tax adjudicated lands, and not presently under mineral lease on August 14, 2013, situated in Plaquemines Parish, Louisiana, and more particularly described as follows: Beginning at a point having Coordinates of X = 2,538,872.00 and Y = 224,144.40; thence North 59 degrees 59 minutes 23 seconds West 7,798.16 feet to a point having a Coordinates of X = 2,532,119.30 and Y = 228,044.70; thence North 60 degrees 13 minutes 24 seconds East 7,654.32 feet to a point having Coordinates of X = 2,538,763.00 and Y = 231,846.00; thence South 60 degrees 33 minutes 44 seconds East 3,935.06 feet to a point having Coordinates of X = 2,542,190.00 and Y = 229,912.00; thence South 70 degrees 15 minutes 23 seconds East 5,763.59 feet to a point having Coordinates of X = 2,547,614.77 and Y = 227,965.00; thence South 8,902.76 feet to a point having Coordinates of X = 2,547,614.77 and Y = 219,062.24; thence North 59 degrees 49 minutes 50 seconds West 10,112.59 feet to the point of beginning, containing approximately **2,193 acres**, all as more particularly outlined on a plat on file in the Office of Mineral Resources, Department of Natural Resources. All bearings, distances and coordinates are based on Louisiana Coordinate System of 1927, (North or South Zone), where applicable.

NOTE: The above description of the Tract nominated for lease has been provided and corrected, where required, exclusively by the nomination party. Any mineral lease selected from this Tract and awarded by the Louisiana State Mineral and Energy Board shall be without warranty of any kind, either express, implied, or statutory, including, but not limited to, the implied warranties of merchantability and fitness for a particular purpose. Should the mineral lease awarded by the Louisiana State Mineral and Energy Board be subsequently modified, cancelled or abrogated due to the existence of conflicting leases, operating agreements, private claims or other future obligations or conditions which may affect all or any portion of the leased Tract, it shall not relieve the Lessee of the obligation to pay any bonus due thereon to the Louisiana State Mineral and Energy Board, nor shall the Louisiana State Mineral and Energy Board be obligated to refund any consideration paid by the Lessor prior to such modification, cancellation, or abrogation, including, but not limited to, bonuses, rentals and royalties.

NOTE: The State of Louisiana does hereby reserve, and this lease shall be subject to, the imprescriptible right of surface use in the nature of a servitude in favor of the Department of Natural Resources, including its Offices and Commissions, for the sole purpose of implementing, constructing, servicing and maintaining approved coastal zone management and/or restoration projects. Utilization of any and all rights derived under this lease by the mineral lessee, its agents, successors or assigns,

shall not interfere with nor hinder the reasonable surface use by the Department of Natural Resources, its Offices or Commissions, as herein above reserved.

NOTE: It appears, according to our records, that a portion of this Tract is located within the restrictive safety fairway area as set out by the Corps of Engineers, U.S. Army and/or the restrictive anchorage area as set out by the U.S. Coast Guard.

Applicant: ROBERT A. SCHROEDER, INC.

Bidder	Cash Payment	Price/Acre	Rental	Oil	Gas	Other

Legend
13080038
Blocks
DOQQ2008

PLAQUEMINES PARISH

BASTIAN BAY



P.O.B.

WD0006

WD0007

GULF OF MEXICO

WEST DELTA AREA

WD0008

0 4,000 Feet



TRACT 43416 - Terrebonne Parish, Louisiana

All of the lands now or formerly constituting the beds and bottoms of all water bodies of every nature and description as to which title is vested in the State of Louisiana, together with all islands arising therein and other lands formed by accretion or by reliction, where allowed by law, excepting tax adjudicated lands, and not presently under mineral lease on August 14, 2013, situated in Terrebonne Parish, Louisiana, and more particularly described as follows: Beginning at a point having Coordinates of X = 2,179,733.52 and Y = 227,478.14; thence East 18,479.09 feet to a point having Coordinates of X = 2,198,212.61 and Y = 227,478.14; thence South 9,965.38 feet to a point having Coordinates of X = 2,198,212.61 and Y = 217,512.75; thence West 11,480.45 feet to a point on the east boundary of State Lease No. 724, as amended having Coordinates of X = 2,186,732.16 and Y = 217,512.75; thence along the boundary of said State Lease No. 724 the following courses: North 00 degrees 16 minutes 35 seconds West 2,706.09 feet to a point having Coordinates of X = 2,186,719.11 and Y = 220,218.81 and South 89 degrees 43 minutes 25 seconds West 6,985.67 feet to a point having Coordinates of X = 2,179,733.52 and Y = 220,185.12; thence North 7,293.01 feet to the point of beginning, (This lease includes only waterbottoms claimed and owned by the state and specifically excludes any land which the state may claim or own and to which the mineral rights are vested in the state), containing approximately **400 acres**, all as more particularly outlined on a plat on file in the Office of Mineral Resources, Department of Natural Resources. All bearings, distances and coordinates are based on Louisiana Coordinate System of 1927, (North or South Zone), where applicable.

NOTE: The above description of the Tract nominated for lease has been provided and corrected, where required, exclusively by the nomination party. Any mineral lease selected from this Tract and awarded by the Louisiana State Mineral and Energy Board shall be without warranty of any kind, either express, implied, or statutory, including, but not limited to, the implied warranties of merchantability and fitness for a particular purpose. Should the mineral lease awarded by the Louisiana State Mineral and Energy Board be subsequently modified, cancelled or abrogated due to the existence of conflicting leases, operating agreements, private claims or other future obligations or conditions which may affect all or any portion of the leased Tract, it shall not relieve the Lessee of the obligation to pay any bonus due thereon to the Louisiana State Mineral and Energy Board, nor shall the Louisiana State Mineral and Energy Board be obligated to refund any consideration paid by the Lessor prior to such modification, cancellation, or abrogation, including, but not limited to, bonuses, rentals and royalties.

NOTE: The State of Louisiana does hereby reserve, and this lease shall be subject to, the imprescriptible right of surface use in the nature of a servitude in favor of the Department of Natural Resources, including its Offices and Commissions, for the sole purpose of implementing, constructing, servicing and maintaining approved coastal zone management

and/or restoration projects. Utilization of any and all rights derived under this lease by the mineral lessee, its agents, successors or assigns, shall not interfere with nor hinder the reasonable surface use by the Department of Natural Resources, its Offices or Commissions, as herein above reserved.

Applicant: CYPRESS ENERGY CORPORATION

Bidder	Cash Payment	Price/Acre	Rental	Oil	Gas	Other

Legend

13080056

Active_Leases
ImgSvc\DOQQ_2004



TERREBONNE PARISH

T20S - R17E

BAYOU L'OURSE

P.O.B.



BAYOU SALE

T21S - R17E

BAYOU GRAND CAILLOU

SL 724

TRACT 43417 - Lafourche Parish, Louisiana

All of the lands now or formerly constituting the beds and bottoms of all water bodies of every nature and description as to which title is vested in the State of Louisiana, together with all islands arising therein and other lands formed by accretion or by reliction, where allowed by law, excepting tax adjudicated lands, and not presently under mineral lease on August 14, 2013, situated in Lafourche Parish, Louisiana, and more particularly described as follows: Beginning at a point on the Northern boundary of State Lease No. 14589, having Coordinates of X = 2,323,257.10 and Y = 209,095.74; thence along the boundary of said State Lease No. 14589 the following courses and distances: West 1,570.13 feet to a point having Coordinates of X = 2,321,686.97 and Y = 209,095.74 and South 89 degrees 30 minutes 18 seconds West 943.18 feet to a point on Tract 2 of State Lease No. 1451, as amended, having Coordinates of X = 2,320,743.83 and Y = 209,087.59; thence along the boundary of Tract 2 of said State Lease No. 1451 the following courses and distances: North 00 degrees 29 minutes 42 seconds West 951.19 feet to a point having Coordinates of X = 2,320,735.61 and Y = 210,038.74, South 89 degrees 30 minutes 18 seconds West 1,476.00 feet to a point having Coordinates of X = 2,319,259.67 and Y = 210,025.99, North 00 degrees 29 minutes 43 seconds West approximately 2,637 feet, Southwesterly approximately 2,387 feet to a point on the boundary of Tract 2 of State Lease No. 1450, as amended, thence North 00 degrees 29 minutes 42 seconds West approximately 1,517 feet along the boundaries of said Tract 2 of State Lease No. 1450 and said Tract 2 of State Lease No. 1451, thence continue along the boundary of said Tract 2 of State Lease No. 1451 the following courses and distances: Northeasterly and Southeasterly approximately 1,727 feet, and North 00 degrees 29 minutes 42 seconds West approximately 501 feet to a point having Coordinates of X = 2,319,231.88 and Y = 213,241.92 and South 72 degrees 40 minutes 49 seconds West 1,600.35 feet to a point on the boundary of said State Lease No. 1450, having Coordinates of X = 2,317,704.10 and Y = 212,765.49; thence North 00 degrees 29 minutes 42 seconds West 67.99 feet to a point having Coordinates of X = 2,317,703.51 and Y = 212,833.48; thence North 00 degrees 29 minutes 42 seconds West 2,094.21 feet to a point on the boundary of State Lease No. 16564, having Coordinates of X = 2,317,685.43 and Y = 214,927.61; thence along the boundary of said State Lease No. 16564 the following courses and distances: North 55 degrees 20 minutes 30 seconds East 130.86 feet to a point having Coordinates of X = 2,317,793.07 and Y = 215,002.03, North 48 degrees 55 minutes 15 seconds East 221.27 feet to a point having Coordinates of X = 2,317,959.87 and Y = 215,147.43, North 40 degrees 41 minutes 38 seconds East 279.78 feet to a point having Coordinates of X = 2,318,142.29 and Y = 215,359.56, North 33 degrees 37 minutes 30 seconds East 264.80 feet to a point having Coordinates of X = 2,318,288.92 and Y = 215,580.05, North 28 degrees 33 minutes 04 seconds East 276.68 feet to a point having Coordinates of X = 2,318,421.16 and Y = 215,823.09, North 21 degrees 59 minutes 14 seconds East 338.98 feet to a point having Coordinates of X = 2,318,548.07 and Y = 216,137.41 and North 25 degrees 51 minutes 28 seconds East 144.96 feet to a point on the boundary of Tract 1 of said State Lease No. 1451 having

Coordinates of X = 2,318,611.29 and Y = 216,267.86; thence along the boundary of Tract 1 of said State Lease No. 1451 the following courses and distances: North 82 degrees 33 minutes 22 seconds East 634.05 feet to a point having Coordinates of X = 2,319,240.00 and Y = 216,350.00, North 78 degrees 31 minutes 05 seconds East 653.07 feet to a point having Coordinates of X = 2,319,880.00 and Y = 216,480.00, North 72 degrees 58 minutes 46 seconds East 512.45 feet to a point having Coordinates of X = 2,320,370.00 and Y = 216,630.00, North 66 degrees 48 minutes 05 seconds East 533.10 feet to a point having Coordinates of X = 2,320,860.00 and Y = 216,840.00, North 60 degrees 45 minutes 04 seconds East 573.06 feet to a point having Coordinates of X = 2,321,360.00 and Y = 217,120.00, North 56 degrees 29 minutes 48 seconds East 851.47 feet to a point having Coordinates of X = 2,322,070.00 and Y = 217,590.00, North 52 degrees 45 minutes 55 seconds East 1,261.40 feet to a point having Coordinates of X = 2,323,074.28 and Y = 218,353.25, North 00 degrees 29 minutes 42 seconds West 829.86 feet to a point having Coordinates of X = 2,323,067.11 and Y = 219,183.08 and North 89 degrees 30 minutes 20 seconds East 190.00 feet to a point having Coordinates of X = 2,323,257.10 and Y = 219,184.72; thence South 10,088.98 feet to the point of beginning, containing approximately **852 acres**, all as more particularly outlined on a plat on file in the Office of Mineral Resources, Department of Natural Resources. All bearings, distances and coordinates are based on Louisiana Coordinate System of 1927, (North or South Zone), where applicable.

NOTE: The above description of the Tract nominated for lease has been provided and corrected, where required, exclusively by the nomination party. Any mineral lease selected from this Tract and awarded by the Louisiana State Mineral and Energy Board shall be without warranty of any kind, either express, implied, or statutory, including, but not limited to, the implied warranties of merchantability and fitness for a particular purpose. Should the mineral lease awarded by the Louisiana State Mineral and Energy Board be subsequently modified, cancelled or abrogated due to the existence of conflicting leases, operating agreements, private claims or other future obligations or conditions which may affect all or any portion of the leased Tract, it shall not relieve the Lessee of the obligation to pay any bonus due thereon to the Louisiana State Mineral and Energy Board, nor shall the Louisiana State Mineral and Energy Board be obligated to refund any consideration paid by the Lessor prior to such modification, cancellation, or abrogation, including, but not limited to, bonuses, rentals and royalties.

NOTE: The State of Louisiana does hereby reserve, and this lease shall be subject to, the imprescriptible right of surface use in the nature of a servitude in favor of the Department of Natural Resources, including its Offices and Commissions, for the sole purpose of implementing, constructing, servicing and maintaining approved coastal zone management and/or restoration projects. Utilization of any and all rights derived under this lease by the mineral lessee, its agents, successors or assigns, shall not interfere with nor hinder the reasonable surface use by the

Department of Natural Resources, its Offices or Commissions, as herein above reserved.

Applicant: THEOPHILUS OIL, GAS & LAND SERVICES, LLC

Bidder	Cash Payment	Price/Acre	Rental	Oil	Gas	Other

Legend

13080016
Active_Leases

LAKE RACCOURCI

P.O.B.

LAFOURCHE PARISH

SL 1451

SL 14589

SL 1451

SL 16564

SL 1450

0 2,000 Feet