

**TRACT 43418 - Lafourche and Terrebonne Parishes, Louisiana**

All of the lands now or formerly constituting the beds and bottoms of all water bodies of every nature and description as to which title is vested in the State of Louisiana, together with all islands arising therein and other lands formed by accretion or by reliction, where allowed by law, excepting tax adjudicated lands, and not presently under mineral lease on August 14, 2013, situated in Lafourche and Terrebonne Parishes, Louisiana, and more particularly described as follows: Beginning at a point having Coordinates of X = 2,293,214.58 and Y = 217,418.93; thence North 89 degrees 26 minutes 14 seconds East 10,872.12 feet to a point having Coordinates of X = 2,304,086.18 and Y = 217,525.72; thence South 1,106.53 feet to a point on the North boundary of State Lease No. 21147, having Coordinates of X = 2,304,086.18 and Y = 216,419.19; thence along the boundary of said State Lease No. 21147 the following courses and distances: South 44 degrees 40 minutes 13 seconds West 1,110.49 feet to a point having Coordinates of X = 2,303,305.48 and Y = 215,629.45, South 27 degrees 25 minutes 49 seconds West 1,457.84 feet to a point having Coordinates of X = 2,302,633.90 and Y = 214,335.51, and South 41 degrees 51 minutes 37 seconds East 2,176.30 feet to a point having Coordinates of X = 2,304,086.18 and Y = 212,714.66; thence South 5,494.00 feet to a point having Coordinates of X = 2,304,086.18 and Y = 207,220.66; thence West 10,871.60 feet to a point having Coordinates of X = 2,293,214.58 and Y = 207,220.66; thence North 10,198.27 feet to the point of beginning, **LESS AND EXCEPT** all of State Lease No. 21146 that lies within the above described tract, being more fully described as follows: Commencing at a point being the point of beginning of the above described nominated tract having Coordinates of X = 2,293,214.58 and Y = 217,418.93; thence South 45 degrees 51 minutes 06 seconds East 8,493.26 feet to a point being the point of beginning of said State Lease No. 21146 having Coordinates of X = 2,299,308.84 and Y = 211,503.23; thence North 82 degrees 59 minutes 16 seconds East 1,009.26 feet to a point having Coordinates of X = 2,300,310.55 and Y = 211,626.44; thence North 60 degrees 31 minutes 27 seconds East 1,363.57 feet to a point having Coordinates of X = 2,301,497.62 and Y = 212,297.39; thence South 89 degrees 39 minutes 22 seconds East 1,294.74 feet to a point having Coordinates of X = 2,302,792.34 and Y = 212,289.62; thence South 72 degrees 28 minutes 53 seconds East 460.91 feet to a point having Coordinates of X = 2,303,231.87 and Y = 212,150.88; thence South 27 degrees 30 minutes 15 seconds West 1,468.47 feet to a point having Coordinates of X = 2,302,553.71 and Y = 210,848.38; thence South 40 degrees 08 minutes 16 seconds West 2,893.51 feet to a point having Coordinates of X = 2,300,688.48 and Y = 208,636.30; thence North 66 degrees 32 minutes 44 seconds West 2,168.13 feet to a point having Coordinates of X = 2,298,699.49 and Y = 209,499.26; thence North 16 degrees 54 minutes 47 seconds East 2,094.57 feet to the point of beginning, (This lease includes only waterbottoms claimed and owned by the state and specifically excludes any land which the state may claim or own and to which the mineral rights are vested in the state), the nominated tract containing approximately **2,005 acres**, all as more particularly outlined on a plat on file in the Office of Mineral Resources, Department of Natural Resources. All bearings, distances and coordinates are based on

Louisiana Coordinate System of 1927, (North or South Zone), where applicable.

NOTE: The above description of the Tract nominated for lease has been provided and corrected, where required, exclusively by the nomination party. Any mineral lease selected from this Tract and awarded by the Louisiana State Mineral and Energy Board shall be without warranty of any kind, either express, implied, or statutory, including, but not limited to, the implied warranties of merchantability and fitness for a particular purpose. Should the mineral lease awarded by the Louisiana State Mineral and Energy Board be subsequently modified, cancelled or abrogated due to the existence of conflicting leases, operating agreements, private claims or other future obligations or conditions which may affect all or any portion of the leased Tract, it shall not relieve the Lessee of the obligation to pay any bonus due thereon to the Louisiana State Mineral and Energy Board, nor shall the Louisiana State Mineral and Energy Board be obligated to refund any consideration paid by the Lessor prior to such modification, cancellation, or abrogation, including, but not limited to, bonuses, rentals and royalties.

NOTE: The State of Louisiana does hereby reserve, and this lease shall be subject to, the imprescriptible right of surface use in the nature of a servitude in favor of the Department of Natural Resources, including its Offices and Commissions, for the sole purpose of implementing, constructing, servicing and maintaining approved coastal zone management and/or restoration projects. Utilization of any and all rights derived under this lease by the mineral lessee, its agents, successors or assigns, shall not interfere with nor hinder the reasonable surface use by the Department of Natural Resources, its Offices or Commissions, as herein above reserved.

Applicant: THEOPHILUS OIL, GAS & LAND SERVICES, LLC

Bidder	Cash Payment	Price/Acre	Rental	Oil	Gas	Other

**Legend**

13080014

Active\_Leases

Counties

DOQQ2008



**TRACT 43419 - Lafourche Parish, Louisiana**

All of the lands now or formerly constituting the beds and bottoms of all water bodies of every nature and description as to which title is vested in the State of Louisiana, together with all islands arising therein and other lands formed by accretion or by reliction, where allowed by law, excepting tax adjudicated lands, and not presently under mineral lease on August 14, 2013, situated in Lafourche Parish, Louisiana, and more particularly described as follows: Beginning at a point having Coordinates of X = 2,304,086.18 and Y = 217,525.72; thence East 5,450.55 feet to a point on Tract 1 of State Lease No. 1450, as amended, having Coordinates of X = 2,309,536.73 and Y = 217,525.72; thence along the boundary of said Tract 1 of State Lease No. 1450 the following courses and distances: South 56 degrees 10 minutes 58 seconds East 2,114.51 feet to a point having Coordinates of X = 2,311,293.50 and Y = 216,348.90, South 24 degrees 50 minutes 18 seconds West 1,216.46 feet to a point having Coordinates of X = 2,310,782.51 and Y = 215,244.97, North 82 degrees 33 minutes 22 seconds East 5,575.39 feet to the Northwest corner of State Lease No. 16564, as amended having Coordinates of X = 2,316,310.91 and Y = 215,967.30; thence along the boundaries of said State Lease No. 16564 the following courses: South 08 degrees 33 minutes 46 seconds East 69.04 feet to a point having Coordinates of X = 2,316,321.19 and Y = 215,899.03, South 19 degrees 14 minutes 49 seconds East 288.51 feet to a point having Coordinates of X = 2,316,416.30 and Y = 215,626.65, South 30 degrees 07 minutes 48 seconds East 466.30 feet to a point having Coordinates of X = 2,316,650.37 and Y = 215,223.35, South 42 degrees 34 minutes 34 seconds East 370.37 feet to a point having Coordinates of X = 2,316,900.95 and Y = 214,950.61, South 63 degrees 22 minutes 42 seconds East 263.31 feet to a point having Coordinates of X = 2,317,136.34 and Y = 214,832.63, South 83 degrees 04 minutes 18 seconds East 227.43 feet to a point having Coordinates of X = 2,317,362.11 and Y = 214,805.19, North 76 degrees 20 minutes 26 seconds East 232.08 feet to a point having Coordinates of X = 2,317,587.63 and Y = 214,860.00 and North 55 degrees 20 minutes 30 seconds East 118.90 feet to a point having Coordinates of X = 2,317,685.43 and Y = 214,927.61; thence South 00 degrees 29 minutes 41 seconds East 2,094.21 feet to a point on the boundary of the Northernmost portion of Tract 2 of State Lease No. 1450, as amended, having Coordinates of X = 2,317,703.51 and Y = 212,833.48; thence along said boundary of said Northernmost portion of Tract 2 of State Lease No. 1450 the following courses and distances: South 73 degrees 43 minutes 35 seconds West 1,555.61 feet to a point having Coordinates of X = 2,316,210.23 and Y = 212,397.56, South 00 degrees 29 minutes 42 seconds East approximately 2,076 feet to a point on its Southern tip, thence Northeasterly along the Northernmost portion of said Tract 2 approximately 2,539 feet to a point being its Southeast corner, said point also being a point on the Northernmost portion of Tract 2 of State Lease No. 1451, as amended; thence South 00 degrees 29 minutes 42 seconds East approximately 1,517 feet to the Northern corner of the Southeastern portion of said Tract 2 of State Lease No. 1450; thence Southwesterly approximately 2,933 feet along the Southeastern portion of said Tract 2 of State Lease No. 1450 to its Southwest corner, said point

also being a point on the Northern boundary of State Lease No. 1480, as amended; thence Southwesterly and Northerly along the boundary of said State Lease No. 1480 to a point being the Southeast corner of the Western portion of said Tract 2 of State Lease No. 1450; thence along the boundary of the Western portion of said Tract 2 of State Lease No. 1450 the following: Northerly approximately 831 feet to its Northeast corner, South 89 degrees 30 minutes 18 seconds West approximately 5,041 feet to a point being its Northwest corner having Coordinates of X = 2,311,049.54 and Y = 209,823.98, and South 01 degrees 11 minutes 08 seconds East 820.17 feet to a point on a portion of said State Lease No. 1480 having Coordinates of X = 2,311,066.51 and Y = 209,003.99; thence South 89 degrees 30 minutes 17 seconds West 5,095.22 feet to a point having Coordinates of X = 2,305,971.46 and Y = 208,959.96; thence West 1,885.28 feet to a point having Coordinates of X = 2,304,086.18 and Y = 208,959.96; thence North 3,754.71 feet to the South corner of State Lease No. 21147, having Coordinates of X = 2,304,086.18 and Y = 212,714.66; thence North 3,704.53 feet along the East line of said State Lease No. 21147, to its most Northern point, having Coordinates of X = 2,304,086.18 and Y = 216,419.19, and North 1,106.53 feet to the point of beginning, containing approximately **2,164 acres**, all as more particularly outlined on a plat on file in the Office of Mineral Resources, Department of Natural Resources. All bearings, distances and coordinates are based on Louisiana Coordinate System of 1927, (North or South Zone), where applicable.

NOTE: The above description of the Tract nominated for lease has been provided and corrected, where required, exclusively by the nomination party. Any mineral lease selected from this Tract and awarded by the Louisiana State Mineral and Energy Board shall be without warranty of any kind, either express, implied, or statutory, including, but not limited to, the implied warranties of merchantability and fitness for a particular purpose. Should the mineral lease awarded by the Louisiana State Mineral and Energy Board be subsequently modified, cancelled or abrogated due to the existence of conflicting leases, operating agreements, private claims or other future obligations or conditions which may affect all or any portion of the leased Tract, it shall not relieve the Lessee of the obligation to pay any bonus due thereon to the Louisiana State Mineral and Energy Board, nor shall the Louisiana State Mineral and Energy Board be obligated to refund any consideration paid by the Lessor prior to such modification, cancellation, or abrogation, including, but not limited to, bonuses, rentals and royalties.

NOTE: The State of Louisiana does hereby reserve, and this lease shall be subject to, the imprescriptible right of surface use in the nature of a servitude in favor of the Department of Natural Resources, including its Offices and Commissions, for the sole purpose of implementing, constructing, servicing and maintaining approved coastal zone management and/or restoration projects. Utilization of any and all rights derived under this lease by the mineral lessee, its agents, successors or assigns, shall not interfere with nor hinder the reasonable surface use by the

Department of Natural Resources, its Offices or Commissions, as herein above reserved.

Applicant: THEOPHILUS OIL, GAS & LAND SERVICES, LLC

Bidder	Cash Payment	Price/Acre	Rental	Oil	Gas	Other

**Legend**

13080015  
Active\_Leases  
DOQQ2008

LAFOURCHE PARISH

LAKE RACCOURCI

SL 1450

SL 16564

SL 1451

SL 1450

SL 1480

SL 21147

P.O.B.

0 3,000 Feet

**TRACT 43420 - Terrebonne Parish, Louisiana**

All of the lands now or formerly constituting the beds and bottoms of all water bodies of every nature and description as to which title is vested in the State of Louisiana, together with all islands arising therein and other lands formed by accretion or by reliction, where allowed by law, excepting tax adjudicated lands, and not presently under mineral lease on August 14, 2013, situated in Terrebonne Parish, Louisiana, and more particularly described as follows: Beginning at a point having Coordinates of X = 2,186,732.16 and Y = 217,512.75; thence East 11,480.45 feet to a point having Coordinates of X = 2,198,212.61 and Y = 217,512.75; thence South 18,380.41 feet to the Northeast corner of State Lease No. 21086 having Coordinates of X = 2,198,212.61 and Y = 199,132.35; thence West 7,700.00 feet along the North boundary of said State Lease No. 21086 to its Northwest corner having Coordinates of X = 2,190,512.61 and Y = 199,132.35; thence continue West 3,691.78 feet to a point on the East boundary of State Lease No. 724, as amended having Coordinates of X = 2,186,820.83 and Y = 199,132.35; thence North 00 degrees 16 minutes 35 seconds West 18,380.62 feet along the East boundary of said State Lease No. 724 to the point of beginning, **LESS AND EXCEPT** any right, title, and interest in lands owned by and not under lease from the State of Louisiana, on behalf of the Terrebonne Parish School Board, situated in Section 16, Township 21 South, Range 17 East, Terrebonne Parish, Louisiana, contained within the above described tract, containing approximately **267 acres**, all as more particularly outlined on a plat on file in the Office of Mineral Resources, Department of Natural Resources. All bearings, distances and coordinates are based on Louisiana Coordinate System of 1927, (North or South Zone), where applicable.

NOTE: The above description of the Tract nominated for lease has been provided and corrected, where required, exclusively by the nomination party. Any mineral lease selected from this Tract and awarded by the Louisiana State Mineral and Energy Board shall be without warranty of any kind, either express, implied, or statutory, including, but not limited to, the implied warranties of merchantability and fitness for a particular purpose. Should the mineral lease awarded by the Louisiana State Mineral and Energy Board be subsequently modified, cancelled or abrogated due to the existence of conflicting leases, operating agreements, private claims or other future obligations or conditions which may affect all or any portion of the leased Tract, it shall not relieve the Lessee of the obligation to pay any bonus due thereon to the Louisiana State Mineral and Energy Board, nor shall the Louisiana State Mineral and Energy Board be obligated to refund any consideration paid by the Lessor prior to such modification, cancellation, or abrogation, including, but not limited to, bonuses, rentals and royalties.

NOTE: The State of Louisiana does hereby reserve, and this lease shall be subject to, the imprescriptible right of surface use in the nature of a servitude in favor of the Department of Natural Resources, including its Offices and Commissions, for the sole purpose of implementing,



constructing, servicing and maintaining approved coastal zone management and/or restoration projects. Utilization of any and all rights derived under this lease by the mineral lessee, its agents, successors or assigns, shall not interfere with nor hinder the reasonable surface use by the Department of Natural Resources, its Offices or Commissions, as herein above reserved.

Applicant: CYPRESS ENERGY CORPORATION

Bidder	Cash Payment	Price/Acre	Rental	Oil	Gas	Other

**Legend**

13080055

Active\_Leases  
ImgSvc\DOQQ\_2004



TERREBONNE PARISH

WAX BAYOU

P.O.B.

SL 724

T21S - R17E

BAYOU COLYELL

SL 21086

BAYOU SALE

**TRACT 43421 - Terrebonne Parish, Louisiana**

All of the lands now or formerly constituting the beds and bottoms of all water bodies of every nature and description as to which title is vested in the State of Louisiana, together with all islands arising therein and other lands formed by accretion or by reliction, where allowed by law, excepting tax adjudicated lands, and not presently under mineral lease on August 14, 2013, situated in Terrebonne Parish, Louisiana, and more particularly described as follows: Beginning at a point having Coordinates of X = 2,141,530.30 and Y = 216,639.88; thence East 11,210.25 feet to a point having Coordinates of X = 2,152,740.55 and Y = 216,639.88; thence South 6,422.88 feet to the Northeast corner of State Lease No. 21163 and the Northwest corner of State Lease No. 21162 having Coordinates 2,152,740.55 and Y = 210,217.00; thence along the boundaries of said State Lease No. 21163 the following courses: West 1,654.55 to a point having Coordinates of X = 2,151,086.00 and Y = 210,217.00, South 3,370.00 feet to a point having Coordinates of X = 2,151,086.00 and Y = 206,847.00 and East 1,654.55 feet to its Southeast corner and the Southwest corner of said State Lease No. 21162 having Coordinates of X = 2,152,740.55 and Y = 206,847.00; thence continue East 2,362.23 feet along the South boundary of said State Lease No. 21162 to its Southeast corner having Coordinates of X = 2,155,102.77 and Y = 206,847.00; thence South 00 degrees 15 minutes 34 seconds East 1,504.29 feet to a point having Coordinates of X = 2,155,109.58 and Y = 205,342.73; thence West 13,579.29 feet to a point having Coordinates of X = 2,141,530.30 and Y = 205,342.73; thence North 11,297.15 feet to the point of beginning, containing approximately **2,383 acres**, all as more particularly outlined on a plat on file in the Office of Mineral Resources, Department of Natural Resources. All bearings, distances and coordinates are based on Louisiana Coordinate System of 1927, (North or South Zone), where applicable.

NOTE: The above description of the Tract nominated for lease has been provided and corrected, where required, exclusively by the nomination party. Any mineral lease selected from this Tract and awarded by the Louisiana State Mineral and Energy Board shall be without warranty of any kind, either express, implied, or statutory, including, but not limited to, the implied warranties of merchantability and fitness for a particular purpose. Should the mineral lease awarded by the Louisiana State Mineral and Energy Board be subsequently modified, cancelled or abrogated due to the existence of conflicting leases, operating agreements, private claims or other future obligations or conditions which may affect all or any portion of the leased Tract, it shall not relieve the Lessee of the obligation to pay any bonus due thereon to the Louisiana State Mineral and Energy Board, nor shall the Louisiana State Mineral and Energy Board be obligated to refund any consideration paid by the Lessor prior to such modification, cancellation, or abrogation, including, but not limited to, bonuses, rentals and royalties.

NOTE: The State of Louisiana does hereby reserve, and this lease shall be subject to, the imprescriptible right of surface use in the nature of a

servitude in favor of the Department of Natural Resources, including its Offices and Commissions, for the sole purpose of implementing, constructing, servicing and maintaining approved coastal zone management and/or restoration projects. Utilization of any and all rights derived under this lease by the mineral lessee, its agents, successors or assigns, shall not interfere with nor hinder the reasonable surface use by the Department of Natural Resources, its Offices or Commissions, as herein above reserved.

NOTE: This tract is located in an area designated by the Louisiana Legislature or the Wildlife and Fisheries Commission as a Public Oyster Seed Ground or Reservation. Surface activity within the boundaries of these designated Public Oyster Seed Grounds or Reservations is prohibited.

Applicant: CYPRESS ENERGY CORPORATION

Bidder	Cash Payment	Price/Acre	Rental	Oil	Gas	Other

**Legend**

13080045

Active\_Leases

DOQQ2008



TERREBONNE PARISH

T21S - R16E

P.O.B.

CAILLOU LAKE

SL 21162

SL 21163

**TRACT 43422 - Terrebonne Parish, Louisiana**

All of the lands now or formerly constituting the beds and bottoms of all water bodies of every nature and description as to which title is vested in the State of Louisiana, together with all islands arising therein and other lands formed by accretion or by reliction, where allowed by law, excepting tax adjudicated lands, and not presently under mineral lease on August 14, 2013, situated in Terrebonne Parish, Louisiana, and more particularly described as follows: Beginning at a point having Coordinates of X = 2,152,740.55 and Y = 216,639.88; thence East 11,153.97 feet to a point being the Northwest corner of State Lease No. 724, as amended having Coordinates of X = 2,163,894.52 and Y = 216,639.88; thence along the boundary of said State Lease No. 724 the following courses: South 00 degrees 57 minutes 56 seconds East 7,909.77 feet to a point having Coordinates of X = 2,164,027.82 and Y = 208,731.23 and South 89 degrees 00 minutes 42 seconds West 3,653.83 feet to a point having Coordinates of X = 2,160,374.53 and Y = 208,668.21; thence West 4,971.53 feet to a point on the East boundary of State Lease No. 21162 having Coordinates of X = 2,155,403.00 and Y = 208,668.21; thence along the boundaries of said State Lease No. 21162 the following courses: North 1,548.79 feet to a point having Coordinates of X = 2,155,403.00 and Y = 210,217.00 and West 2,662.45 feet to its Northwest corner and the Northeast corner of State Lease No. 21163 having Coordinates of X = 2,152,740.55 and Y = 210,217.00; thence 6,422.88 feet to the point of beginning, **LESS AND EXCEPT** any right, title, and interest in lands owned by and not under lease from the State of Louisiana, on behalf of the Terrebonne Parish School Board, situated in Section 16, Township 21 South, Range 16 East, Terrebonne Parish, Louisiana, contained within the above described tract, containing approximately **498 acres**, all as more particularly outlined on a plat on file in the Office of Mineral Resources, Department of Natural Resources. All bearings, distances and coordinates are based on Louisiana Coordinate System of 1927, (North or South Zone), where applicable.

NOTE: The above description of the Tract nominated for lease has been provided and corrected, where required, exclusively by the nomination party. Any mineral lease selected from this Tract and awarded by the Louisiana State Mineral and Energy Board shall be without warranty of any kind, either express, implied, or statutory, including, but not limited to, the implied warranties of merchantability and fitness for a particular purpose. Should the mineral lease awarded by the Louisiana State Mineral and Energy Board be subsequently modified, cancelled or abrogated due to the existence of conflicting leases, operating agreements, private claims or other future obligations or conditions which may affect all or any portion of the leased Tract, it shall not relieve the Lessee of the obligation to pay any bonus due thereon to the Louisiana State Mineral and Energy Board, nor shall the Louisiana State Mineral and Energy Board be obligated to refund any consideration paid by the Lessor prior to such modification, cancellation, or abrogation, including, but not limited to, bonuses, rentals and royalties.

NOTE: The State of Louisiana does hereby reserve, and this lease shall be subject to, the imprescriptible right of surface use in the nature of a servitude in favor of the Department of Natural Resources, including its Offices and Commissions, for the sole purpose of implementing, constructing, servicing and maintaining approved coastal zone management and/or restoration projects. Utilization of any and all rights derived under this lease by the mineral lessee, its agents, successors or assigns, shall not interfere with nor hinder the reasonable surface use by the Department of Natural Resources, its Offices or Commissions, as herein above reserved.

Applicant: CYPRESS ENERGY CORPORATION

Bidder	Cash Payment	Price/Acre	Rental	Oil	Gas	Other

**Legend**

13080046



Active\_Leases

DOQQ2008



0 3,000 Feet

TERREBONNE PARISH

T21S - R16E

BAYOU DU NORD

P.O.B.

SL 724

BAY DE L'OUEST

MONCLEUSE BAY

SL 21163

SL 21162



**TRACT 43423 - Lafourche and Terrebonne Parishes, Louisiana**

All of the lands now or formerly constituting the beds and bottoms of all water bodies of every nature and description as to which title is vested in the State of Louisiana, together with all islands arising therein and other lands formed by accretion or by reliction, where allowed by law, excepting tax adjudicated lands, and not presently under mineral lease on August 14, 2013, situated in Lafourche and Terrebonne Parishes, Louisiana, and more particularly described as follows: Beginning at a point on the East boundary of State Lease No. 20892, having Coordinates of X = 2,299,700.00 and Y = 203,050.00; thence along the boundaries of said State Lease No. 20892 the following courses and distances: North 55 degrees 04 minutes 50 seconds West 6,466.56 feet to a point having Coordinates of X = 2,294,397.69 and Y = 206,751.61 and South 79 degrees 11 minutes 51 seconds West 45.35 feet to its Northwest corner and the Northeast corner of State Lease No. 20893, having Coordinates of X = 2,294,353.15 and Y = 206,743.11; thence continue South 79 degrees 11 minutes 51 seconds West 1,159.12 feet along the North boundary of said State Lease No. 20893 to a point having Coordinates of X = 2,293,214.58 and Y = 206,525.87; thence North 694.79 feet to a point having Coordinates of X = 2,293,214.58 and Y = 207,220.66; thence East 10,871.60 feet to a point having Coordinates of X = 2,304,086.18 and Y = 207,220.66; thence North 1,739.30 feet to a point having Coordinates of X = 2,304,086.18 and Y = 208,959.96; thence East 1,885.28 feet to the Northwest corner of the North portion of State Lease No. 1480, as amended, having Coordinates of X = 2,305,971.46 and Y = 208,959.96; thence South 01 degrees 00 minutes 00 seconds East 7,186.60 feet along the West boundary of said State Lease No. 1480 to its Southwest corner, having Coordinates of X = 2,306,096.88 and Y = 201,774.45; thence South 475.09 feet to a point having Coordinates of X = 2,306,096.88 and Y = 201,299.36; thence West 5,626.88 feet to the Northeast corner of State Lease No. 20897, having Coordinates of X = 2,300,470.00 and Y = 201,299.36; thence South 89 degrees 59 minutes 57 seconds West 770.00 feet along the North boundary of State Lease No. 20897 to the Southeast corner of said State Lease No. 20892, having Coordinates of X = 2,299,700.00 and Y = 201,299.35; thence North 1,750.65 feet along the East boundary of said State Lease No. 20892 to the point of beginning, (This lease includes only waterbottoms claimed and owned by the state and specifically excludes any land which the state may claim or own and to which the mineral rights are vested in the state), containing approximately **1,232 acres**, all as more particularly outlined on a plat on file in the Office of Mineral Resources, Department of Natural Resources. All bearings, distances and coordinates are based on Louisiana Coordinate System of 1927, (North or South Zone), where applicable.

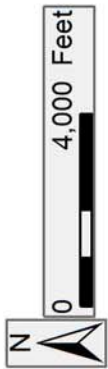
NOTE: The above description of the Tract nominated for lease has been provided and corrected, where required, exclusively by the nomination party. Any mineral lease selected from this Tract and awarded by the Louisiana State Mineral and Energy Board shall be without warranty of any kind, either express, implied, or statutory, including, but not limited to, the implied warranties of merchantability and fitness for a particular

purpose. Should the mineral lease awarded by the Louisiana State Mineral and Energy Board be subsequently modified, cancelled or abrogated due to the existence of conflicting leases, operating agreements, private claims or other future obligations or conditions which may affect all or any portion of the leased Tract, it shall not relieve the Lessee of the obligation to pay any bonus due thereon to the Louisiana State Mineral and Energy Board, nor shall the Louisiana State Mineral and Energy Board be obligated to refund any consideration paid by the Lessor prior to such modification, cancellation, or abrogation, including, but not limited to, bonuses, rentals and royalties.

NOTE: The State of Louisiana does hereby reserve, and this lease shall be subject to, the imprescriptible right of surface use in the nature of a servitude in favor of the Department of Natural Resources, including its Offices and Commissions, for the sole purpose of implementing, constructing, servicing and maintaining approved coastal zone management and/or restoration projects. Utilization of any and all rights derived under this lease by the mineral lessee, its agents, successors or assigns, shall not interfere with nor hinder the reasonable surface use by the Department of Natural Resources, its Offices or Commissions, as herein above reserved.

Applicant: THEOPHILUS OIL, GAS & LAND SERVICES, LLC

Bidder	Cash Payment	Price/Acre	Rental	Oil	Gas	Other



**Legend**

- 13080017 (Red outline)
- Active\_Leases (Green dashed outline)
- Counties (Orange outline)

LAFOURCHE PARISH

LAKE RACCOURCI

SL 1480

SL 20893

SL 20892

P.O.B.

SL 20897

**TRACT 43424 - Lafourche Parish, Louisiana**

All of the lands now or formerly constituting the beds and bottoms of all water bodies of every nature and description as to which title is vested in the State of Louisiana, together with all islands arising therein and other lands formed by accretion or by reliction, where allowed by law, excepting tax adjudicated lands, and not presently under mineral lease on August 14, 2013, situated in Lafourche Parish, Louisiana, and more particularly described as follows: Beginning at the Southwest corner of the North portion of State Lease No. 1480, as amended, having Coordinates of X = 2,306,096.88 and Y = 201,774.45; thence along the Southerly boundary of the North portion of said State Lease No. 1480 the following courses and distances: North 88 degrees 50 minutes 07 seconds East 3,735.38 feet, North 05 degrees 13 minutes 26 seconds West 851.15 feet, North 89 degrees 38 minutes 36 seconds East 2,501.08 feet, North 60 degrees 21 minutes 42 seconds East 316.37 feet, North 56 degrees 35 minutes 32 seconds East 563.00 feet, North 53 degrees 31 minutes 51 seconds East 286.00 feet, North 50 degrees 47 minutes 34 seconds East 980.80 feet, North 52 degrees 52 minutes 09 seconds East 878.00 feet, North 56 degrees 33 minutes 36 seconds East 635.10 feet, North 59 degrees 18 minutes 01 seconds East 744.30 feet, North 57 degrees 30 minutes 24 seconds East 1,991.80 feet, North 63 degrees 26 minutes 06 seconds East 219.34 feet to a point being on the Western boundary of State Lease No. 14589, as amended; thence along the Western boundary of said State Lease No. 14589 the following courses and distances: North 63 degrees 26 minutes 06 seconds East 853.97 feet, North 65 degrees 49 minutes 15 seconds East 537.10 feet, South 34 degrees 01 minutes 10 seconds West 482.60 feet, South 28 degrees 36 minutes 38 seconds West 626.50 feet, South 27 degrees 48 minutes 59 seconds West 1,465.34 feet to a point being the Northernmost corner of the East portion of said State Lease No. 1480, thence along the boundaries of the East portion of said State Lease No. 1480 the following courses and distances: South 27 degrees 48 minutes 59 seconds West 377.66 feet, South 33 degrees 23 minutes 19 seconds West 527.00 feet, South 41 degrees 59 minutes 14 seconds West 403.60 feet, South 43 degrees 13 minutes 43 seconds West 686.20 feet, South 48 degrees 21 minutes 59 seconds West 722.50 feet, South 52 degrees 47 minutes 01 seconds West 992.00 feet, South 57 degrees 07 minutes 26 seconds West 976.40 feet, South 58 degrees 02 minutes 09 seconds West 516.60 feet, South 60 degrees 12 minutes 18 seconds West 289.10 feet, South 61 degrees 00 minutes 04 seconds West 152.35 feet, South 03 degrees 41 minutes 29 seconds East 454.47 feet, South 00 degrees 29 minutes 42 seconds East 2,283.26 feet, North 63 degrees 17 minutes 36 seconds East 2,167.69 feet, South 1,172.45 feet, and East 2,193.23 feet to a point on the Western boundary of said State Lease No. 14589, having Coordinates of X = 2,317,736.10 and Y = 198,143.96; thence South 2,082.84 feet along the Western boundary of said State Lease No. 14589 to its Southwest corner having Coordinates of X = 2,317,736.10 and Y = 196,061.12; thence South 89 degrees 30 minutes 18 seconds West 2,812.45 feet to the Northeast corner of the East portion of State Lease No. 3258, as amended, having Coordinates of X = 2,314,923.76 and Y = 196,036.82; thence South 89 degrees 30 minutes 18 seconds West

1,129.13 feet along the North boundary of the East portion of said State Lease No. 3258 to the Southeast corner of State Lease No. 21088 having Coordinates of X = 2,313,794.68 and Y = 196,027.07; thence along the boundaries of said State Lease No. 21088 the following courses and distances: North 48 degrees 19 minutes 14 seconds East 187.88 feet to a point having Coordinates of X = 2,313,935.00 and Y = 196,152.00 and North 73 degrees 27 minutes 48 seconds West 3,981.29 feet to its Northwest corner and a point on the West boundary of State Lease No. 1480, as amended, having Coordinates of X = 2,310,118.39 and Y = 197,285.19; thence North 31 degrees 20 minutes 43 seconds West 809.77 feet to a corner having Coordinates of X = 2,309,697.15 and Y = 197,976.77, South 84 degrees 46 minutes 18 seconds West 2,024.53 feet to a corner having Coordinates of X = 2,307,681.04 and Y = 197,792.28, South 81 degrees 46 minutes 24 seconds West 1,108.08 feet to a corner having Coordinates of X = 2,306,587.33 and Y = 197,634.16 and South 77 degrees 05 minutes 33 seconds West 503.16 feet to a point having Coordinates of X = 2,306,096.88 and Y = 197,521.76; thence North 4,252.69 feet to the point of beginning, **LESS AND EXCEPT** Operating Agreement 0320 as described as follows: Beginning at a point having Coordinates of X = 2,309,754.00 and Y = 202,698.00; thence South 73 degrees 39 minutes 41 seconds East 3,284.76 feet to a point having Coordinates of X = 2,312,906.11 and Y = 201,773.95; thence South 63 degrees 21 minutes 41 seconds West 2,123.35 feet to a point having Coordinates of X = 2,311,008.15 and Y = 200,821.92; thence North 70 degrees 12 minutes 55 seconds West 1,189.67 feet to a point having Coordinates of X = 2,309,888.71 and Y = 201,224.61; thence North 05 degrees 13 minutes 26 seconds West 1,479.54 feet to the point of beginning, from the surface to one hundred feet below the stratigraphic equivalent of the Tex 11 Sand, as seen in the XPLOR State Lease No. 1480 No. 2 (Serial No. 224584) between 13,096 feet and 13,190 feet MD. This lease includes only waterbottoms claimed and owned by the state and specifically excludes any land which the state may claim or own and to which the mineral rights are vested in the state, nominated tract containing approximately **1,358 acres**, all as more particularly outlined on a plat on file in the Office of Mineral Resources, Department of Natural Resources. All bearings, distances and coordinates are based on Louisiana Coordinate System of 1927, (North or South Zone), where applicable.

NOTE: The above description of the Tract nominated for lease has been provided and corrected, where required, exclusively by the nomination party. Any mineral lease selected from this Tract and awarded by the Louisiana State Mineral and Energy Board shall be without warranty of any kind, either express, implied, or statutory, including, but not limited to, the implied warranties of merchantability and fitness for a particular purpose. Should the mineral lease awarded by the Louisiana State Mineral and Energy Board be subsequently modified, cancelled or abrogated due to the existence of conflicting leases, operating agreements, private claims or other future obligations or conditions which may affect all or any portion of the leased Tract, it shall not relieve the Lessee of the obligation to pay any bonus due thereon to the Louisiana State Mineral and

Energy Board, nor shall the Louisiana State Mineral and Energy Board be obligated to refund any consideration paid by the Lessor prior to such modification, cancellation, or abrogation, including, but not limited to, bonuses, rentals and royalties.

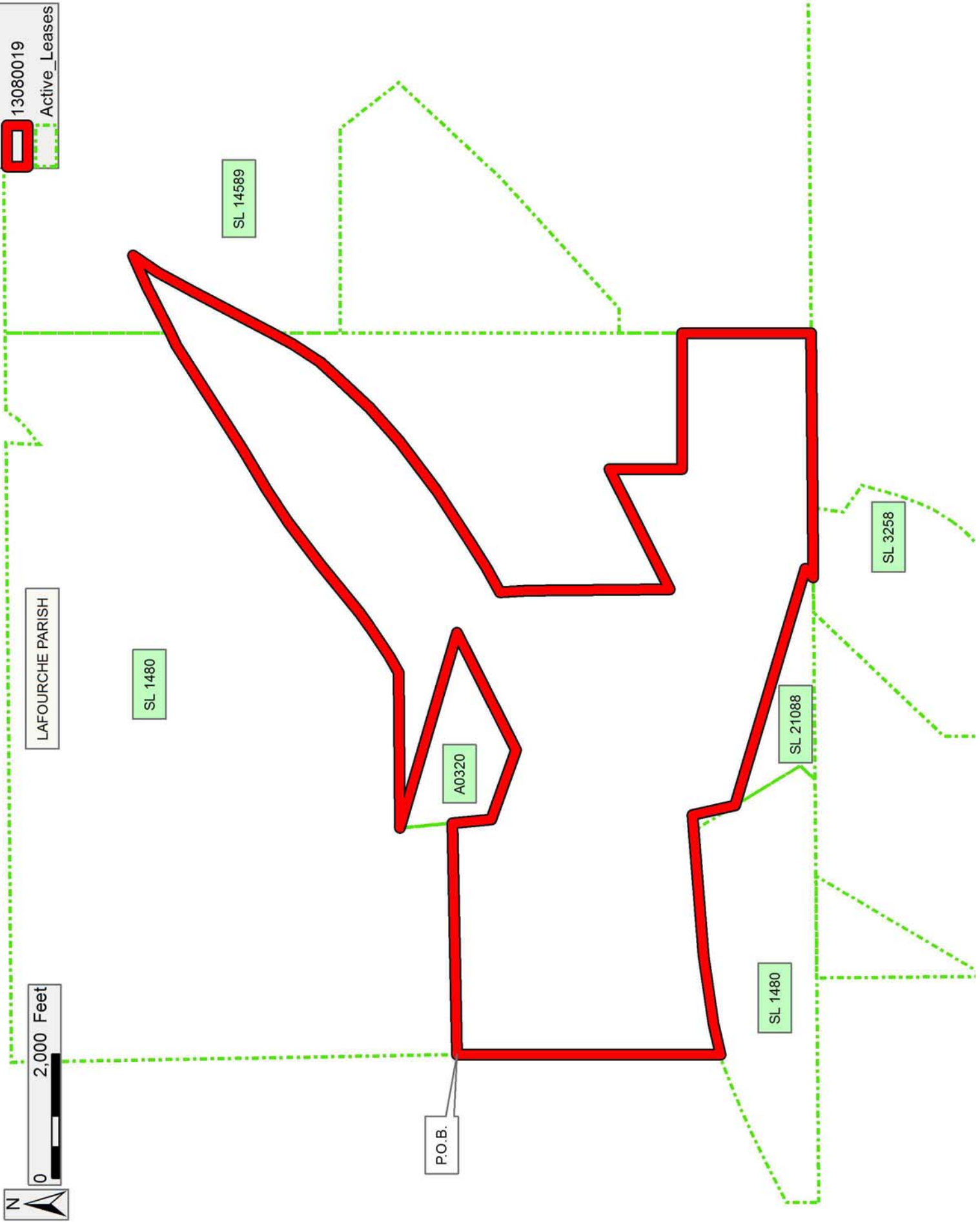
NOTE: The State of Louisiana does hereby reserve, and this lease shall be subject to, the imprescriptible right of surface use in the nature of a servitude in favor of the Department of Natural Resources, including its Offices and Commissions, for the sole purpose of implementing, constructing, servicing and maintaining approved coastal zone management and/or restoration projects. Utilization of any and all rights derived under this lease by the mineral lessee, its agents, successors or assigns, shall not interfere with nor hinder the reasonable surface use by the Department of Natural Resources, its Offices or Commissions, as herein above reserved.

Applicant: THEOPHILUS OIL, GAS & LAND SERVICES, LLC

Bidder	Cash Payment	Price/Acre	Rental	Oil	Gas	Other

**Legend**

13080019  
Active\_Leases



**TRACT 43425 - Terrebonne Parish, Louisiana**

All of the lands now or formerly constituting the beds and bottoms of all water bodies of every nature and description as to which title is vested in the State of Louisiana, together with all islands arising therein and other lands formed by accretion or by reliction, where allowed by law, excepting tax adjudicated lands, and not presently under mineral lease on August 14, 2013, situated in Terrebonne Parish, Louisiana, and more particularly described as follows: Beginning at the Southernmost Southwest corner of State Lease No. 724, as amended, having Coordinates of X = 2,165,536.31 and Y = 193,716.36; thence South 89 degrees 43 minutes 25 seconds West 10,374.00 feet to a point having Coordinates of X = 2,155,162.43 and Y = 193,666.32; thence North 00 degrees 15 minutes 34 seconds West 13,180.82 feet to the Southeast corner of State Lease No. 21162 having Coordinates having Coordinates of X = 2,155,102.77 and Y = 206,847.00; thence along the boundaries of said State Lease No. 21162 the following courses: North 00 degrees 15 minutes 34 seconds West 1,821.23 feet to a point having Coordinates of X = 2,155,094.53 and Y = 208,668.21 and East 308.47 feet to a point having its East boundary having Coordinates of X = 2,155,403.00 and Y = 208,668.21; thence continue East 4,971.53 feet to a point having Coordinates of X = 2,160,374.53 and Y = 208,668.21, said point being the Southernmost Northwest corner of said State Lease No. 724, as amended; thence South 00 degrees 16 minutes 35 seconds East 4,720.28 feet along the Western boundary of said State Lease No. 724, as amended, to the Northwest corner of State Lease No. 21157 having Coordinates of X = 2,160,397.30 and Y = 203,947.98; thence along the boundaries of said State Lease No. 21157 the following courses: South 00 degrees 16 minutes 35 seconds East 1,514.54 feet to a point having Coordinates of X = 2,160,404.61 and Y = 202,433.66 and Southwesterly on an arc having a radius of 13,200.00 feet and a center at X = 2,152,463.32 and Y = 191,889.66 to a point having Coordinates of X = 2,161,506.49 and Y = 201,505.33, also being the Northern tip of State Lease No. 21152; thence along the boundaries of said State Lease No. 21152 the following courses: South 00 degrees 56 minutes 31 seconds East 3,378.43 feet to a point having Coordinates of X = 2,161,562.03 and Y = 198,127.36 and North 89 degrees 08 minutes 42 seconds East 2,514.56 feet to its Southeast corner and a point on the West boundary of said State Lease No. 724 having Coordinates of X = 2,164,074.06 and Y = 198,169.06; thence Southwesterly on an arc having a radius of 13,200.00 feet and a center at X = 2,152,463.32 and Y = 191,889.66 along the West boundary of said State Lease No. 724 to the point of beginning, containing approximately **1,400 acres**, all as more particularly outlined on a plat on file in the Office of Mineral Resources, Department of Natural Resources. All bearings, distances and coordinates are based on Louisiana Coordinate System of 1927, (North or South Zone), where applicable.

NOTE: The above description of the Tract nominated for lease has been provided and corrected, where required, exclusively by the nomination party. Any mineral lease selected from this Tract and awarded by the Louisiana State Mineral and Energy Board shall be without warranty of any



kind, either express, implied, or statutory, including, but not limited to, the implied warranties of merchantability and fitness for a particular purpose. Should the mineral lease awarded by the Louisiana State Mineral and Energy Board be subsequently modified, cancelled or abrogated due to the existence of conflicting leases, operating agreements, private claims or other future obligations or conditions which may affect all or any portion of the leased Tract, it shall not relieve the Lessee of the obligation to pay any bonus due thereon to the Louisiana State Mineral and Energy Board, nor shall the Louisiana State Mineral and Energy Board be obligated to refund any consideration paid by the Lessor prior to such modification, cancellation, or abrogation, including, but not limited to, bonuses, rentals and royalties.

NOTE: The State of Louisiana does hereby reserve, and this lease shall be subject to, the imprescriptible right of surface use in the nature of a servitude in favor of the Department of Natural Resources, including its Offices and Commissions, for the sole purpose of implementing, constructing, servicing and maintaining approved coastal zone management and/or restoration projects. Utilization of any and all rights derived under this lease by the mineral lessee, its agents, successors or assigns, shall not interfere with nor hinder the reasonable surface use by the Department of Natural Resources, its Offices or Commissions, as herein above reserved.

Applicant: CYPRESS ENERGY CORPORATION

Bidder	Cash Payment	Price/Acre	Rental	Oil	Gas	Other

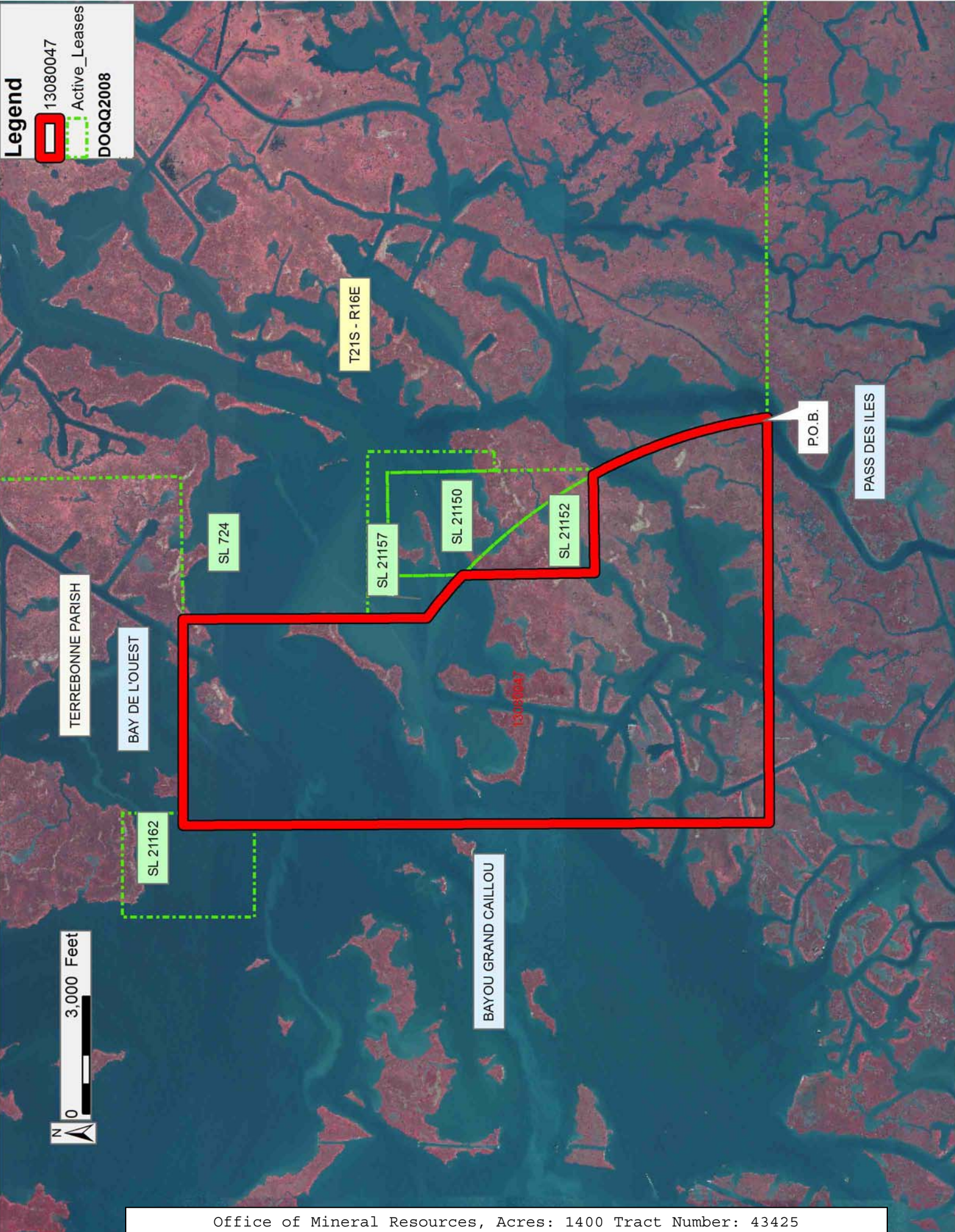
**Legend**



13080047

Active\_Leases

DOQQ2008



0 3,000 Feet



**TRACT 43426 - Terrebonne Parish, Louisiana**

All of the lands now or formerly constituting the beds and bottoms of all water bodies of every nature and description as to which title is vested in the State of Louisiana, together with all islands arising therein and other lands formed by accretion or by reliction, where allowed by law, excepting tax adjudicated lands, and not presently under mineral lease on August 14, 2013, situated in Terrebonne Parish, Louisiana, and more particularly described as follows: Beginning at a point having Coordinates of X = 2,141,530.30 and Y = 205,342.73; thence East 13,579.29 feet to a point having Coordinates of X = 2,155,109.58 and Y = 205,342.73; thence South 00 degrees 15 minutes 34 seconds East 7,916.77 feet to a point having Coordinates of X = 2,155,145.41 and Y = 197,426.04; thence West 13,615.12 feet to a point having Coordinates of X = 2,141,530.30 and Y = 197,426.04; thence North 7,916.68 feet to the point of beginning, containing approximately **2,140 acres**, all as more particularly outlined on a plat on file in the Office of Mineral Resources, Department of Natural Resources. All bearings, distances and coordinates are based on Louisiana Coordinate System of 1927, (North or South Zone), where applicable.

NOTE: The above description of the Tract nominated for lease has been provided and corrected, where required, exclusively by the nomination party. Any mineral lease selected from this Tract and awarded by the Louisiana State Mineral and Energy Board shall be without warranty of any kind, either express, implied, or statutory, including, but not limited to, the implied warranties of merchantability and fitness for a particular purpose. Should the mineral lease awarded by the Louisiana State Mineral and Energy Board be subsequently modified, cancelled or abrogated due to the existence of conflicting leases, operating agreements, private claims or other future obligations or conditions which may affect all or any portion of the leased Tract, it shall not relieve the Lessee of the obligation to pay any bonus due thereon to the Louisiana State Mineral and Energy Board, nor shall the Louisiana State Mineral and Energy Board be obligated to refund any consideration paid by the Lessor prior to such modification, cancellation, or abrogation, including, but not limited to, bonuses, rentals and royalties.

NOTE: The State of Louisiana does hereby reserve, and this lease shall be subject to, the imprescriptible right of surface use in the nature of a servitude in favor of the Department of Natural Resources, including its Offices and Commissions, for the sole purpose of implementing, constructing, servicing and maintaining approved coastal zone management and/or restoration projects. Utilization of any and all rights derived under this lease by the mineral lessee, its agents, successors or assigns, shall not interfere with nor hinder the reasonable surface use by the Department of Natural Resources, its Offices or Commissions, as herein above reserved.

NOTE: This tract is located in an area designated by the Louisiana Legislature or the Wildlife and Fisheries Commission as a Public Oyster

Seed Ground or Reservation. Surface activity within the boundaries of these designated Public Oyster Seed Grounds or Reservations is prohibited.

Applicant: CYPRESS ENERGY CORPORATION

Bidder	Cash Payment	Price/Acre	Rental	Oil	Gas	Other

Legend



13080048

DOQQ2008

TERREBONNE PARISH

MONCLEUSE BAY

P.O.B.

T21S - R15E



3,000 Feet

**TRACT 43427 - Lafourche Parish, Louisiana**

All of the lands now or formerly constituting the beds and bottoms of all water bodies of every nature and description as to which title is vested in the State of Louisiana, together with all islands arising therein and other lands formed by accretion or by reliction, where allowed by law, excepting tax adjudicated lands, and not presently under mineral lease on August 14, 2013, situated in Lafourche Parish, Louisiana, and more particularly described as follows: Beginning at the Northeast corner of State Lease No. 20897, having Coordinates of X = 2,300,470.00 and Y = 201,299.36; thence East 5,626.88 feet to a point having Coordinates of X = 2,306,096.88 and Y = 201,299.36; thence South 3,777.60 feet to a point on the Northern boundary of State Lease No. 1480, as amended, having Coordinates of X = 2,306,096.88 and Y = 197,521.76; thence along the boundary of said State Lease No. 1480 the following courses and distances: South 77 degrees 05 minutes 33 seconds West 145.72 feet to a point having Coordinates of X = 2,305,954.83 and Y = 197,489.22, South 68 degrees 11 minutes 55 seconds West 851.54 feet to a point having Coordinates of X = 2,305,164.20 and Y = 197,172.96, South 64 degrees 51 minutes 19 seconds West 713.27 feet to a point having Coordinates of X = 2,304,518.52 and Y = 196,869.89, South 63 degrees 06 minutes 14 seconds West 901.62 feet to a point having Coordinates of X = 2,303,714.43 and Y = 196,462.01, and South 00 degrees 29 minutes 42 seconds East 522.02 feet to a point on the boundary of State Lease No. 3599, as amended, having Coordinates of X = 2,303,718.94 and Y = 195,940.02; thence along the boundary of said State Lease No. 3599 the following courses and distances: South 89 degrees 30 minutes 18 seconds West 870.00 feet to a point having Coordinates of X = 2,302,848.97 and Y = 195,932.51, North 00 degrees 29 minutes 42 seconds West 405.00 feet to a point having Coordinates of X = 2,302,845.47 and Y = 196,337.49 and South 89 degrees 30 minutes 18 seconds West 2,375.56 feet to the Southeast corner of said State Lease No. 20897, having Coordinates of X = 2,300,470.00 and Y = 196,316.97; thence North 4,982.39 feet along the East boundary of said State Lease No. 20897 to the point of beginning, (This lease includes only waterbottoms claimed and owned by the state and specifically excludes any land which the state may claim or own and to which the mineral rights are vested in the state), containing approximately **611.48 acres**, all as more particularly outlined on a plat on file in the Office of Mineral Resources, Department of Natural Resources. All bearings, distances and coordinates are based on Louisiana Coordinate System of 1927, (North or South Zone), where applicable.

NOTE: The above description of the Tract nominated for lease has been provided and corrected, where required, exclusively by the nomination party. Any mineral lease selected from this Tract and awarded by the Louisiana State Mineral and Energy Board shall be without warranty of any kind, either express, implied, or statutory, including, but not limited to, the implied warranties of merchantability and fitness for a particular purpose. Should the mineral lease awarded by the Louisiana State Mineral and Energy Board be subsequently modified, cancelled or abrogated due to the existence of conflicting leases, operating agreements, private claims

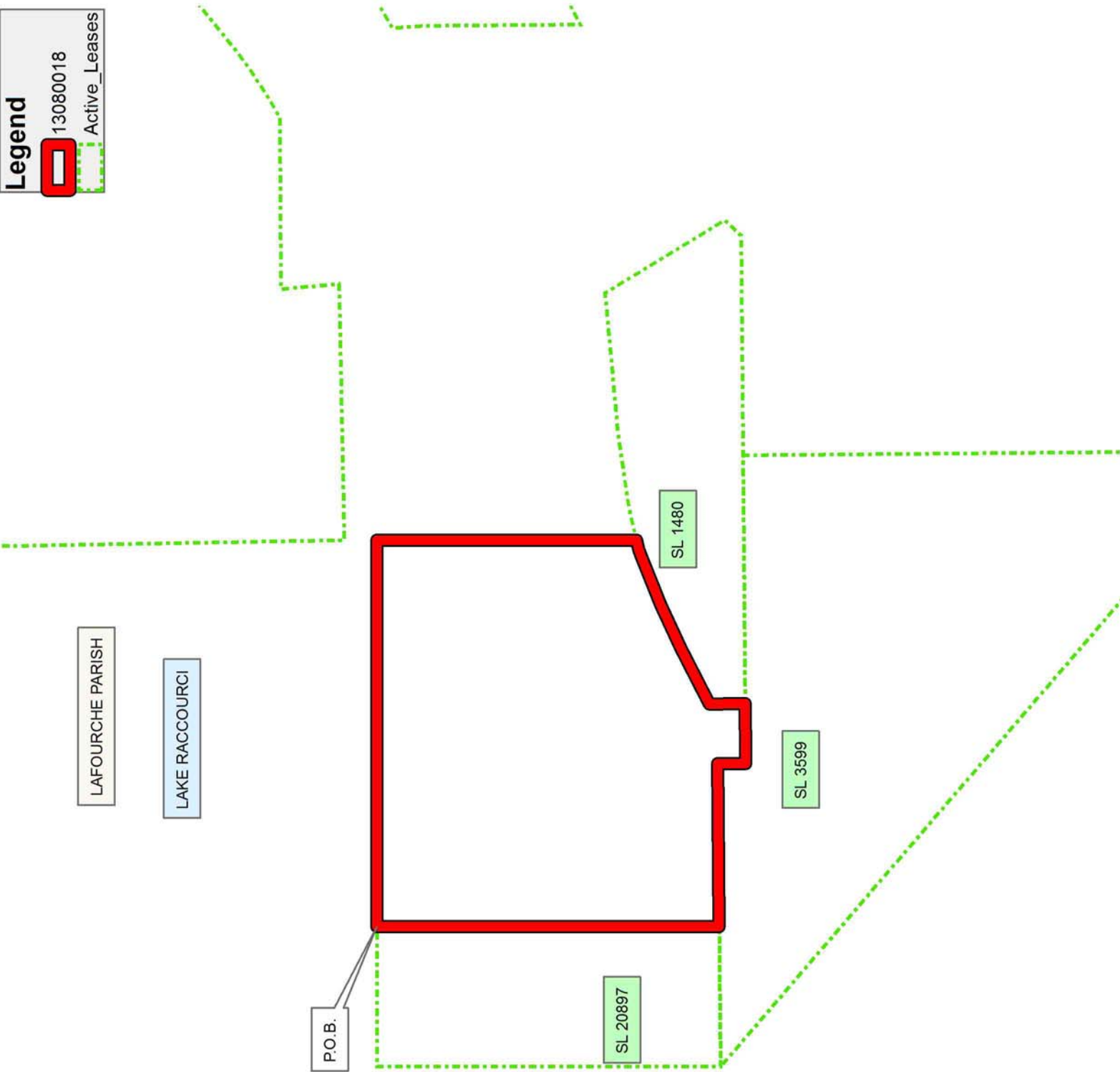
or other future obligations or conditions which may affect all or any portion of the leased Tract, it shall not relieve the Lessee of the obligation to pay any bonus due thereon to the Louisiana State Mineral and Energy Board, nor shall the Louisiana State Mineral and Energy Board be obligated to refund any consideration paid by the Lessor prior to such modification, cancellation, or abrogation, including, but not limited to, bonuses, rentals and royalties.

NOTE: The State of Louisiana does hereby reserve, and this lease shall be subject to, the imprescriptible right of surface use in the nature of a servitude in favor of the Department of Natural Resources, including its Offices and Commissions, for the sole purpose of implementing, constructing, servicing and maintaining approved coastal zone management and/or restoration projects. Utilization of any and all rights derived under this lease by the mineral lessee, its agents, successors or assigns, shall not interfere with nor hinder the reasonable surface use by the Department of Natural Resources, its Offices or Commissions, as herein above reserved.

Applicant: THEOPHILUS OIL, GAS & LAND SERVICES, LLC

Bidder	Cash Payment	Price/Acre	Rental	Oil	Gas	Other

**Legend**  
13080018  
Active\_Leases



LAFOURCHE PARISH

LAKE RACCOURCI

P.O.B.

SL 1480

SL 3599

SL 20897

