

TRACT 43446 - Portion of Blocks 10, 119, 120, and 9, South Timbalier Area, Revised, Terrebonne Parish, Louisiana

The beds and bottoms of all water bodies belonging to the State of Louisiana located in Blocks 10, 119, 120, and 9, South Timbalier Area, Revised, together with any present lands formed by accretion to the shoreline or islands formed therein, located in Terrebonne Parish, Louisiana, owned by and not presently under mineral lease as of September 11, 2013, from the State of Louisiana, the geographical area of which is more fully described as follows: Beginning at a point on the Louisiana Coastline, as decreed by the Supreme Court of the United States, as determined by a Special Master appointed therein, in litigation styled *United States v. State of Louisiana et al No. 9 Original*, in 1975, having Coordinates of X = 2,226,776.18 and Y = 147,627.11; thence Northeasterly on a straight line along said Coastline to a point having Coordinates of X = 2,236,721.53 and Y = 150,054.38; thence South 10,140.70 feet having Coordinates of X = 2,236,721.53 and Y = 139,913.68; thence West 9,945.35 feet to a point having Coordinates of X = 2,226,776.18 and Y = 139,913.68; thence North 7,713.43 feet to the point of beginning, containing approximately **2,038.17 acres**, all as more particularly outlined on a plat on file in the Office of Mineral Resources, Department of Natural Resources. All bearings, distances and coordinates are based on Louisiana Coordinate System of 1927, (North or South Zone).

NOTE: The above description of the Tract nominated for lease has been provided and corrected, where required, exclusively by the nomination party. Any mineral lease selected from this Tract and awarded by the Louisiana State Mineral and Energy Board shall be without warranty of any kind, either express, implied, or statutory, including, but not limited to, the implied warranties of merchantability and fitness for a particular purpose. Should the mineral lease awarded by the Louisiana State Mineral and Energy Board be subsequently modified, cancelled or abrogated due to the existence of conflicting leases, operating agreements, private claims or other future obligations or conditions which may affect all or any portion of the leased Tract, it shall not relieve the Lessee of the obligation to pay any bonus due thereon to the Louisiana State Mineral and Energy Board, nor shall the Louisiana State Mineral and Energy Board be obligated to refund any consideration paid by the Lessor prior to such modification, cancellation, or abrogation, including, but not limited to, bonuses, rentals and royalties.

NOTE: The State of Louisiana does hereby reserve, and this lease shall be subject to, the imprescriptible right of surface use in the nature of a servitude in favor of the Department of Natural Resources, including its Offices and Commissions, for the sole purpose of implementing, constructing, servicing and maintaining approved coastal zone management and/or restoration projects. Utilization of any and all rights derived under this lease by the mineral lessee, its agents, successors or assigns, shall not interfere with nor hinder the reasonable surface use by the

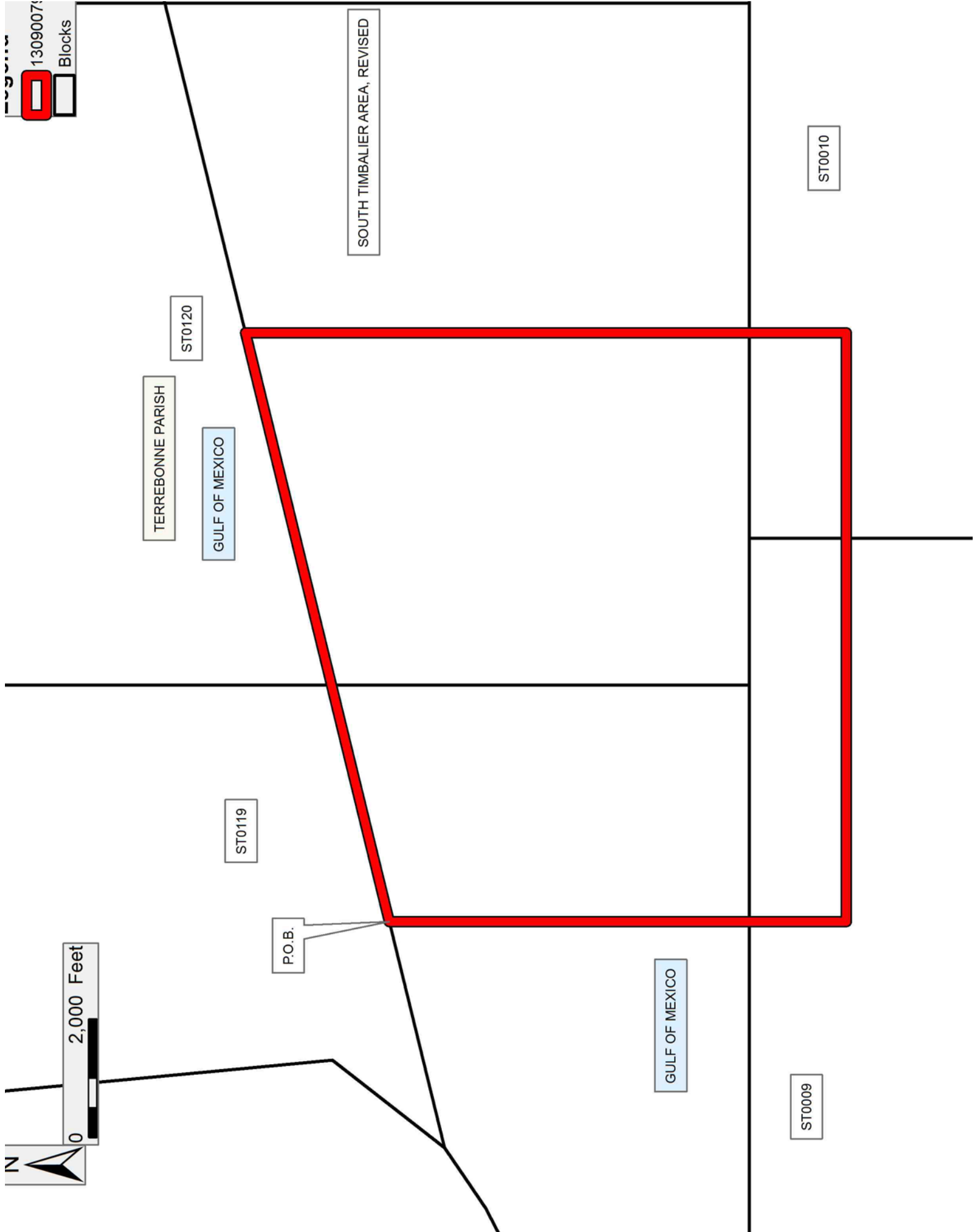
Department of Natural Resources, its Offices or Commissions, as herein above reserved.

NOTE: It appears, according to our records, that a portion of this Tract is located within the restrictive safety fairway area as set out by the Corps of Engineers, U.S. Army and/or the restrictive anchorage area as set out by the U.S. Coast Guard.

Applicant: CYPRESS ENERGY CORPORATION

Bidder	Cash Payment	Price/Acre	Rental	Oil	Gas	Other

1309007
Blocks



TRACT 43447 - Portion of Blocks 119, 8, and 9, South Timbalier Area, Revised, Terrebonne Parish, Louisiana

The beds and bottoms of all water bodies belonging to the State of Louisiana located in Blocks 119, 8, and 9, South Timbalier Area, Revised, together with any present lands formed by accretion to the shoreline or islands formed therein, located in Terrebonne Parish, Louisiana, owned by and not presently under mineral lease as of September 11, 2013, from the State of Louisiana, the geographical area of which is more fully described as follows: Beginning at a point on the Louisiana Coastline, as decreed by the Supreme Court of the United States, as determined by a Special Master appointed therein, in litigation styled *United States v. State of Louisiana et al No. 9 Original*, in 1975, having Coordinates of X = 2,217,646.02 and Y = 144,035.68; thence Northeasterly on a straight line along said Coastline to a point having Coordinates of X = 2,218,146.00 and Y = 144,160.00; thence Northeasterly on a straight line along said Coastline to a point having Coordinates of X = 2,219,935.00 and Y = 144,971.00; thence Northeasterly on a straight line along said Coastline to a point having Coordinates of X = 2,221,937.00 and Y = 146,004.00; thence Northeasterly on a straight line along said Coastline to a point having Coordinates of X = 2,222,957.00 and Y = 146,695.00; thence Northeasterly on a straight line along said Coastline to a point having Coordinates of X = 2,226,776.18 and Y = 147,627.11; thence South 7,713.43 feet to a point having Coordinates of X = 2,226,776.18 and Y = 139,913.68; thence West 1,883.21 feet to a point on the North boundary of State Lease No. 15307, as amended having Coordinates of X = 2,224,892.97 and Y = 139,913.68; thence along the boundaries of said State Lease No. 15307 the following courses: North 60 degrees 17 minutes 15 seconds West 1,147.87 feet to a point having Coordinates of X = 2,223,896.02 and Y = 140,482.62, South 68 degrees 30 minutes 25 seconds West 2,057.83 feet to a point having Coordinates of X = 2,221,981.29 and Y = 139,728.66, South 18 degrees 30 minutes 56 seconds East 917.87 feet to a point having Coordinates of X = 2,222,272.77 and Y = 138,858.30 and South 58 degrees 21 minutes 27 seconds West 5,434.68 feet to a point having Coordinates of X = 2,217,646.02 and Y = 136,007.18; thence North 8,028.50 feet to the point of beginning, containing approximately **1,525.79 acres**, all as more particularly outlined on a plat on file in the Office of Mineral Resources, Department of Natural Resources. All bearings, distances and coordinates are based on Louisiana Coordinate System of 1927, (North or South Zone).

NOTE: The above description of the Tract nominated for lease has been provided and corrected, where required, exclusively by the nomination party. Any mineral lease selected from this Tract and awarded by the Louisiana State Mineral and Energy Board shall be without warranty of any kind, either express, implied, or statutory, including, but not limited to, the implied warranties of merchantability and fitness for a particular purpose. Should the mineral lease awarded by the Louisiana State Mineral and Energy Board be subsequently modified, cancelled or abrogated due to the existence of conflicting leases, operating agreements, private claims

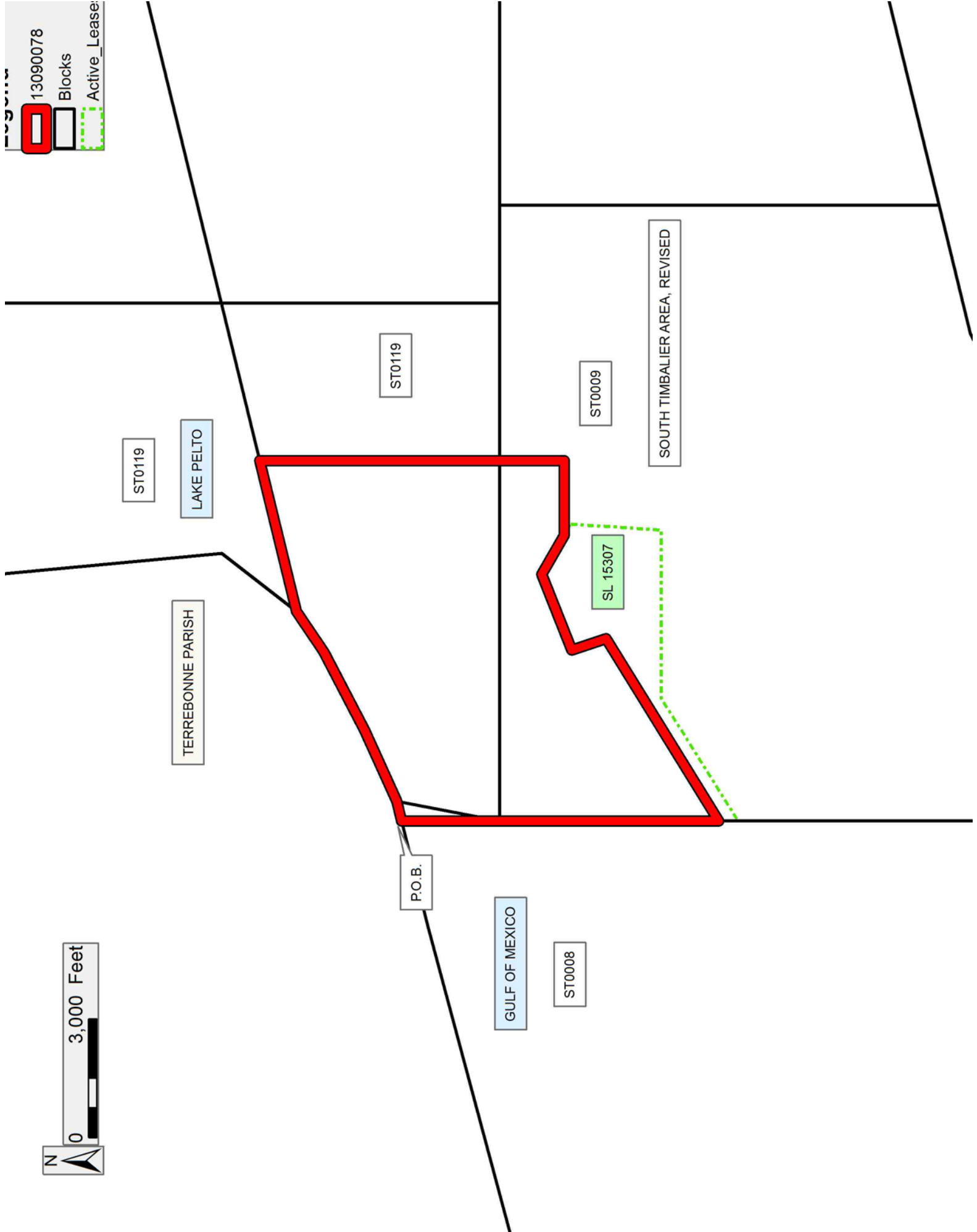
or other future obligations or conditions which may affect all or any portion of the leased Tract, it shall not relieve the Lessee of the obligation to pay any bonus due thereon to the Louisiana State Mineral and Energy Board, nor shall the Louisiana State Mineral and Energy Board be obligated to refund any consideration paid by the Lessor prior to such modification, cancellation, or abrogation, including, but not limited to, bonuses, rentals and royalties.

NOTE: The State of Louisiana does hereby reserve, and this lease shall be subject to, the imprescriptible right of surface use in the nature of a servitude in favor of the Department of Natural Resources, including its Offices and Commissions, for the sole purpose of implementing, constructing, servicing and maintaining approved coastal zone management and/or restoration projects. Utilization of any and all rights derived under this lease by the mineral lessee, its agents, successors or assigns, shall not interfere with nor hinder the reasonable surface use by the Department of Natural Resources, its Offices or Commissions, as herein above reserved.

Applicant: CYPRESS ENERGY CORPORATION

Bidder	Cash Payment	Price/Acre	Rental	Oil	Gas	Other

13090078
 Blocks
 Active_Lease



TRACT 43448 - Portion of Block 8, South Timbalier Area, Revised, Terrebonne Parish, Louisiana

The beds and bottoms of all water bodies belonging to the State of Louisiana located in Block 8, South Timbalier Area, Revised, together with any present lands formed by accretion to the shoreline or islands formed therein, located in Terrebonne Parish, Louisiana, owned by and not presently under mineral lease as of September 11, 2013, from the State of Louisiana, the geographical area of which is more fully described as follows: Beginning at a point on the Louisiana Coastline, as decreed by the Supreme Court of the United States, as determined by a Special Master appointed therein, in litigation styled *United States v. State of Louisiana et al No. 9 Original*, in 1975, having Coordinates of X = 2,203,514.87 and Y = 140,140.95; thence Northeasterly on a straight line along said Coastline to a point having Coordinates of X = 2,207,126 and Y = 141,266; thence Northeasterly on a straight line along said Coastline to a point having Coordinates of X = 2,215,009 and Y = 143,380; thence Northeasterly on a straight line along said Coastline to a point having Coordinates of X = 2,217,646.02 and Y = 144,035.68; thence South 8,028.50 feet to the Northwest corner of State Lease No. 15307 having Coordinates of X = 2,217,646.02 and Y = 136,007.18; thence continue South 495.20 feet along the West boundary of said State Lease No. 15307 to its Southwest corner having Coordinates of X = 2,217,646.02 and Y = 135,511.98; thence West 14,131.15 feet to a point having Coordinates of X = 2,203,514.87 and Y = 135,511.98; thence North 4,628.97 feet to the point of beginning, containing approximately **2,159.12 acres**, all as more particularly outlined on a plat on file in the Office of Mineral Resources, Department of Natural Resources. All bearings, distances and coordinates are based on Louisiana Coordinate System of 1927, (North or South Zone).

NOTE: The above description of the Tract nominated for lease has been provided and corrected, where required, exclusively by the nomination party. Any mineral lease selected from this Tract and awarded by the Louisiana State Mineral and Energy Board shall be without warranty of any kind, either express, implied, or statutory, including, but not limited to, the implied warranties of merchantability and fitness for a particular purpose. Should the mineral lease awarded by the Louisiana State Mineral and Energy Board be subsequently modified, cancelled or abrogated due to the existence of conflicting leases, operating agreements, private claims or other future obligations or conditions which may affect all or any portion of the leased Tract, it shall not relieve the Lessee of the obligation to pay any bonus due thereon to the Louisiana State Mineral and Energy Board, nor shall the Louisiana State Mineral and Energy Board be obligated to refund any consideration paid by the Lessor prior to such modification, cancellation, or abrogation, including, but not limited to, bonuses, rentals and royalties.

NOTE: The State of Louisiana does hereby reserve, and this lease shall be subject to, the imprescriptible right of surface use in the nature of a

servitude in favor of the Department of Natural Resources, including its Offices and Commissions, for the sole purpose of implementing, constructing, servicing and maintaining approved coastal zone management and/or restoration projects. Utilization of any and all rights derived under this lease by the mineral lessee, its agents, successors or assigns, shall not interfere with nor hinder the reasonable surface use by the Department of Natural Resources, its Offices or Commissions, as herein above reserved.

Applicant: CYPRESS ENERGY CORPORATION

Bidder	Cash Payment	Price/Acre	Rental	Oil	Gas	Other

Legend

- 13090076
- Blocks
- Active_Lease



LAKE PELTO

TERREBONNE PARISH

ST0119

P.O.B.

ST0009

SL 15307

SOUTH TIMBALIER AREA, REVISED

GULF OF MEXICO

ST0008

ST0007

TRACT 43449 - Portion of Blocks 10, and 9, South Timbalier Area, Revised, Terrebonne Parish, Louisiana

The beds and bottoms of all water bodies belonging to the State of Louisiana located in Blocks 10, and 9, South Timbalier Area, Revised, together with any present lands formed by accretion to the shoreline or islands formed therein, located in Terrebonne Parish, Louisiana, owned by and not presently under mineral lease as of September 11, 2013, from the State of Louisiana, the geographical area of which is more fully described as follows: Beginning at a point having Coordinates of X = 2,236,721.53 and Y = 141,553.53; thence East 9,000.00 feet to a point having Coordinates of X = 2,245,721.53 and Y = 141,553.53; thence South 7,826.63 feet having Coordinates of X = 2,245,721.53 and Y = 133,726.90; thence South 81 degrees 59 minutes 03 seconds West 12,750.49 feet to a point having Coordinates of X = 2,233,095.62 and Y = 131,948.87; thence North 7,964.82 feet to a point having Coordinates of X = 2,233,095.62 and Y = 139,913.68; thence East 3,625.91 feet to a point having Coordinates of X = 2,236,721.53 and Y = 139,913.68; thence North 1,639.85 feet to the point of beginning, containing approximately **2,389.74 acres**, all as more particularly outlined on a plat on file in the Office of Mineral Resources, Department of Natural Resources. All bearings, distances and coordinates are based on Louisiana Coordinate System of 1927, (North or South Zone).

NOTE: The above description of the Tract nominated for lease has been provided and corrected, where required, exclusively by the nomination party. Any mineral lease selected from this Tract and awarded by the Louisiana State Mineral and Energy Board shall be without warranty of any kind, either express, implied, or statutory, including, but not limited to, the implied warranties of merchantability and fitness for a particular purpose. Should the mineral lease awarded by the Louisiana State Mineral and Energy Board be subsequently modified, cancelled or abrogated due to the existence of conflicting leases, operating agreements, private claims or other future obligations or conditions which may affect all or any portion of the leased Tract, it shall not relieve the Lessee of the obligation to pay any bonus due thereon to the Louisiana State Mineral and Energy Board, nor shall the Louisiana State Mineral and Energy Board be obligated to refund any consideration paid by the Lessor prior to such modification, cancellation, or abrogation, including, but not limited to, bonuses, rentals and royalties.

NOTE: The State of Louisiana does hereby reserve, and this lease shall be subject to, the imprescriptible right of surface use in the nature of a servitude in favor of the Department of Natural Resources, including its Offices and Commissions, for the sole purpose of implementing, constructing, servicing and maintaining approved coastal zone management and/or restoration projects. Utilization of any and all rights derived under this lease by the mineral lessee, its agents, successors or assigns, shall not interfere with nor hinder the reasonable surface use by the

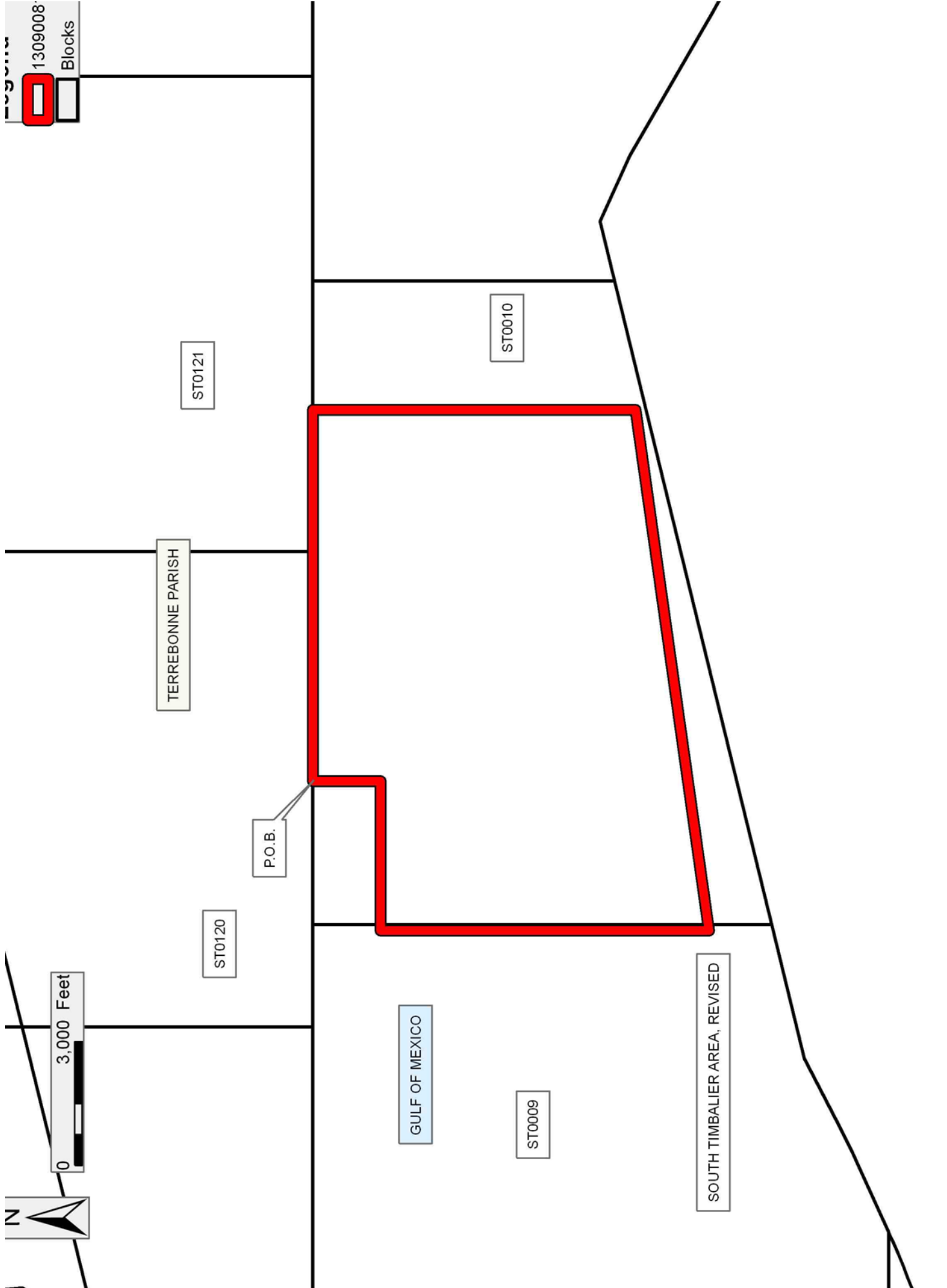
Department of Natural Resources, its Offices or Commissions, as herein above reserved.

NOTE: It appears, according to our records, that a portion of this Tract is located within the restrictive safety fairway area as set out by the Corps of Engineers, U.S. Army and/or the restrictive anchorage area as set out by the U.S. Coast Guard.

Applicant: CYPRESS ENERGY CORPORATION

Bidder	Cash Payment	Price/Acre	Rental	Oil	Gas	Other

1309008
Blocks



TRACT 43450 - Portion of Blocks 7, and 8, South Timbalier Area, Revised, Terrebonne Parish, Louisiana

The beds and bottoms of all water bodies belonging to the State of Louisiana located in Blocks 7, and 8, South Timbalier Area, Revised, together with any present lands formed by accretion to the shoreline or islands formed therein, located in Terrebonne Parish, Louisiana, owned by and not presently under mineral lease as of September 11, 2013, from the State of Louisiana, the geographical area of which is more fully described as follows: Beginning at a point on the Louisiana Coastline, as decreed by the Supreme Court of the United States, as determined by a Special Master appointed therein, in litigation styled *United States v. State of Louisiana et al No. 9 Original*, in 1975, having Coordinates of X = 2,191,788.20 and Y = 136,854.52; thence Northeasterly on a straight line along said Coastline to a point having Coordinates of X = 2,192,330 and Y = 136,944; thence Northeasterly on a straight line along said Coastline to a point having Coordinates of X = 2,198,296 and Y = 138,515; thence Northeasterly on a straight line along said Coastline to a point having Coordinates of X = 2,203,514.87 and Y = 140,140.95; thence South 10,626.49 feet to a point having Coordinates of X = 2,203,514.87 and Y = 129,514.46; thence North 89 degrees 56 minutes 29 seconds West 11,709.26 feet to a point having Coordinates of X = 2,191,805.62 and Y = 129,526.41; thence North 00 degrees 08 minutes 10 seconds West 7,328.14 feet to the point of beginning, containing approximately **2,389.66 acres**, all as more particularly outlined on a plat on file in the Office of Mineral Resources, Department of Natural Resources. All bearings, distances and coordinates are based on Louisiana Coordinate System of 1927, (North or South Zone).

NOTE: The above description of the Tract nominated for lease has been provided and corrected, where required, exclusively by the nomination party. Any mineral lease selected from this Tract and awarded by the Louisiana State Mineral and Energy Board shall be without warranty of any kind, either express, implied, or statutory, including, but not limited to, the implied warranties of merchantability and fitness for a particular purpose. Should the mineral lease awarded by the Louisiana State Mineral and Energy Board be subsequently modified, cancelled or abrogated due to the existence of conflicting leases, operating agreements, private claims or other future obligations or conditions which may affect all or any portion of the leased Tract, it shall not relieve the Lessee of the obligation to pay any bonus due thereon to the Louisiana State Mineral and Energy Board, nor shall the Louisiana State Mineral and Energy Board be obligated to refund any consideration paid by the Lessor prior to such modification, cancellation, or abrogation, including, but not limited to, bonuses, rentals and royalties.

NOTE: The State of Louisiana does hereby reserve, and this lease shall be subject to, the imprescriptible right of surface use in the nature of a servitude in favor of the Department of Natural Resources, including its Offices and Commissions, for the sole purpose of implementing,

constructing, servicing and maintaining approved coastal zone management and/or restoration projects. Utilization of any and all rights derived under this lease by the mineral lessee, its agents, successors or assigns, shall not interfere with nor hinder the reasonable surface use by the Department of Natural Resources, its Offices or Commissions, as herein above reserved.

Applicant: CYPRESS ENERGY CORPORATION

Bidder	Cash Payment	Price/Acre	Rental	Oil	Gas	Other



TRACT 43451 - Portion of Blocks 8, and 9, South Timbalier Area, Revised, Terrebonne Parish, Louisiana

The beds and bottoms of all water bodies belonging to the State of Louisiana located in Blocks 8, and 9, South Timbalier Area, Revised, together with any present lands formed by accretion to the shoreline or islands formed therein, located in Terrebonne Parish, Louisiana, owned by and not presently under mineral lease as of September 11, 2013, from the State of Louisiana, the geographical area of which is more fully described as follows: Beginning at a point on the East boundary of State Lease No. 15307, as amended having Coordinates of X = 2,224,892.97 and Y = 139,913.68; thence East 8,202.65 feet to a point having Coordinates of X = 2,233,095.62 and Y = 139,913.68; thence South 7,964.82 feet having Coordinates of X = 2,233,095.62 and Y = 131,948.87; thence South 81 degrees 59 minutes 03 seconds West 17,316.85 feet to the Southeast corner of State Lease No. 4237, as amended having Coordinates of X = 2,215,947.97 and Y = 129,534.07; thence along the boundaries of said State Lease No. 4237 the following courses: North 64 degrees 55 minutes 16 seconds East 1,500.00 feet to a point having Coordinates of X = 2,217,306.56 and Y = 130,169.87, North 46 degrees 13 minutes 14 seconds West 1,550.00 feet to a point having Coordinates of X = 2,216,187.45 and Y = 131,242.29 and North 51 degrees 16 minutes 08 seconds East 1,869.74 feet to a point on the West boundary of State Lease No. 4238, as amended having Coordinates of X = 2,217,646.02 and Y = 132,412.12; thence along the boundaries of said State Lease No. 4238 the following courses: South 836.81 feet to a point having Coordinates of X = 2,217,646.02 and Y = 131,575.31, North 64 degrees 56 minutes 49 seconds East 8,360.86 feet to a point having Coordinates of X = 2,225,220.26 and Y = 135,115.76, North 55 degrees 17 minutes 22 seconds West 2,109.69 feet to a point having Coordinates of X = 2,223,486.01 and Y = 136,317.08, South 74 degrees 38 minutes 42 seconds West 83.87 feet to a point having Coordinates of X = 2,223,405.13 and Y = 136,294.87 and North 22 degrees 51 minutes 36 seconds West 1,277.43 feet to a point on the South boundary of said State Lease No. 15307 having Coordinates of X = 2,222,908.87 and Y = 137,471.97; thence along the boundaries of said State Lease No. 15307 the following courses: East 2,112.44 feet to a point having Coordinates of X = 2,225,021.31 and Y = 137,471.97, North 03 degrees 44 minutes 41 seconds East 2,288.08 feet to a point having Coordinates of X = 2,225,170.75 and Y = 139,755.16 and North 60 degrees 17 minutes 15 seconds West 319.83 feet to the point of beginning, containing approximately **2,206.55 acres**, all as more particularly outlined on a plat on file in the Office of Mineral Resources, Department of Natural Resources. All bearings, distances and coordinates are based on Louisiana Coordinate System of 1927, (North or South Zone).

NOTE: The above description of the Tract nominated for lease has been provided and corrected, where required, exclusively by the nomination party. Any mineral lease selected from this Tract and awarded by the Louisiana State Mineral and Energy Board shall be without warranty of any

kind, either express, implied, or statutory, including, but not limited to, the implied warranties of merchantability and fitness for a particular purpose. Should the mineral lease awarded by the Louisiana State Mineral and Energy Board be subsequently modified, cancelled or abrogated due to the existence of conflicting leases, operating agreements, private claims or other future obligations or conditions which may affect all or any portion of the leased Tract, it shall not relieve the Lessee of the obligation to pay any bonus due thereon to the Louisiana State Mineral and Energy Board, nor shall the Louisiana State Mineral and Energy Board be obligated to refund any consideration paid by the Lessor prior to such modification, cancellation, or abrogation, including, but not limited to, bonuses, rentals and royalties.

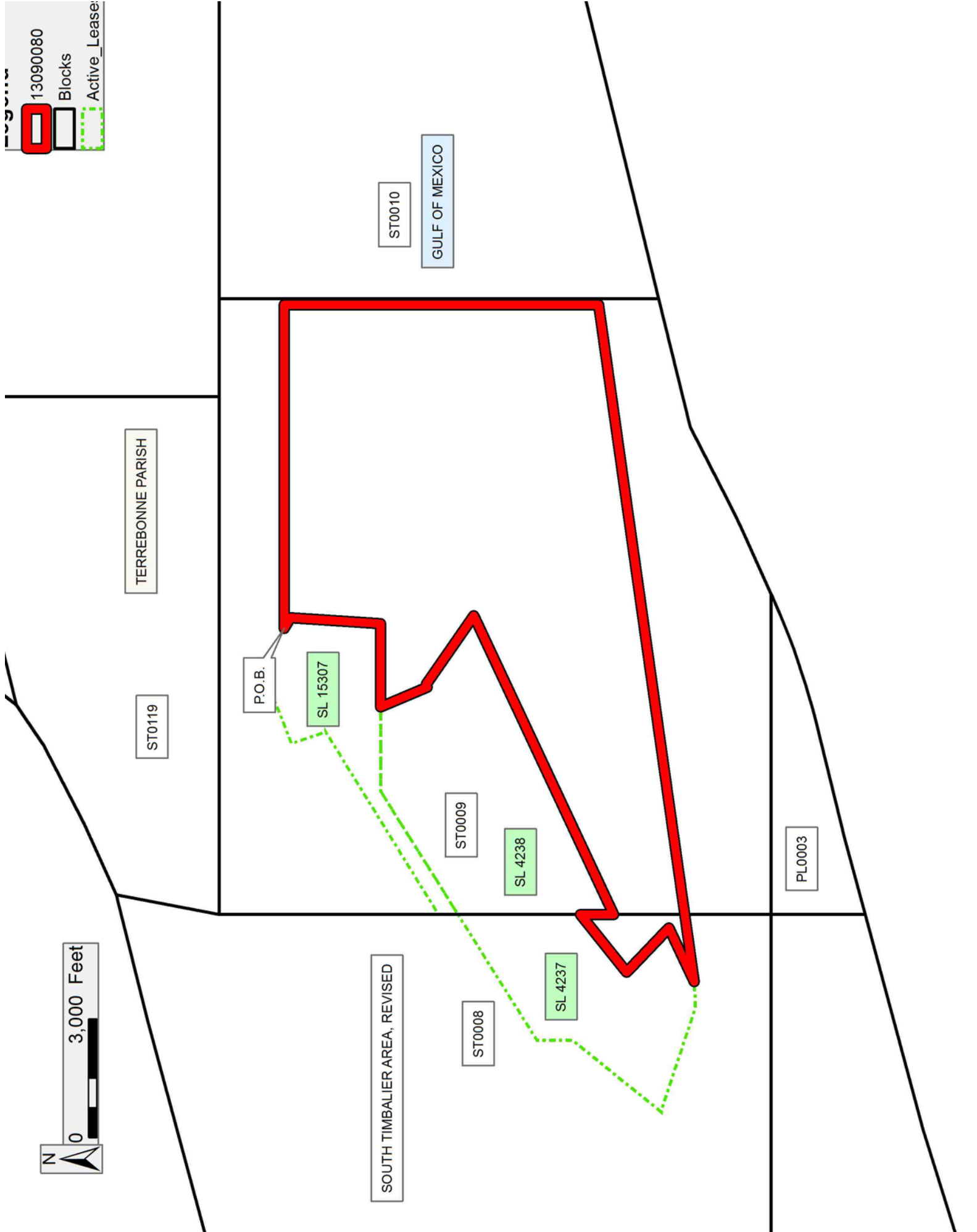
NOTE: The State of Louisiana does hereby reserve, and this lease shall be subject to, the imprescriptible right of surface use in the nature of a servitude in favor of the Department of Natural Resources, including its Offices and Commissions, for the sole purpose of implementing, constructing, servicing and maintaining approved coastal zone management and/or restoration projects. Utilization of any and all rights derived under this lease by the mineral lessee, its agents, successors or assigns, shall not interfere with nor hinder the reasonable surface use by the Department of Natural Resources, its Offices or Commissions, as herein above reserved.

Applicant: CYPRESS ENERGY CORPORATION

Bidder	Cash Payment	Price/Acre	Rental	Oil	Gas	Other

Legend

- 13090080
- Blocks
- Active_Lease



TRACT 43452 - Portion of Block 8, South Timbalier Area, Revised, Terrebonne Parish, Louisiana

The beds and bottoms of all water bodies belonging to the State of Louisiana located in Block 8, South Timbalier Area, Revised, together with any present lands formed by accretion to the shoreline or islands formed therein, located in Terrebonne Parish, Louisiana, owned by and not presently under mineral lease as of September 11, 2013, from the State of Louisiana, the geographical area of which is more fully described as follows: Beginning at a point having Coordinates of X = 2,203,514.87 and Y = 135,511.98; thence East 14,131.15 feet to the Northeast corner of State Lease No. 4237, as amended, the Southwest corner of State Lease No. 15307, as amended and the Northwest corner of State Lease No. 4238, as amended having Coordinates of X = 2,217,646.02 and Y = 135,511.98; thence South 57 degrees 55 minutes 39 seconds West 2,928.40 feet along the West boundary of said State Lease No. 4237 to a point on the Eastern boundary of State Lease No. 14905, as amended having Coordinates of X = 2,215,164.56 and Y = 133,957.02; thence along the boundaries of said State Lease No. 14905 the following courses: North 02 degrees 13 minutes 57 seconds West 122.37 feet to a point having Coordinates of X = 2,215,159.79 and Y = 134,079.30, North 63 degrees 22 minutes 39 seconds West 133.74 feet to a point having Coordinates of X = 2,215,040.23 and Y = 134,139.23, North 72 degrees 01 minutes 48 seconds West 244.36 feet to a point having Coordinates of X = 2,214,807.79 and Y = 134,214.62, North 81 degrees 26 minutes 15 seconds West 150.52 feet to a point having Coordinates of X = 2,214,658.95 and Y = 134,237.03, North 84 degrees 17 minutes 36 seconds West 245.89 feet to a point having Coordinates of X = 2,214,414.28 and Y = 134,261.48, South 87 degrees 48 minutes 36 seconds West 174.54 feet to a point having Coordinates of X = 2,214,239.87 and Y = 134,254.81, South 54 degrees 38 minutes 20 seconds West 172.52 feet to a point having Coordinates of X = 2,214,099.18 and Y = 134,154.97, South 55 degrees 04 minutes 19 seconds West 206.41 feet to a point having Coordinates of X = 2,213,929.95 and Y = 134,036.79, South 51 degrees 21 minutes 34 seconds West 261.04 feet to a point having Coordinates of X = 2,213,726.06 and Y = 133,873.79, South 53 degrees 38 minutes 03 seconds West 240.55 feet to a point having Coordinates of X = 2,213,532.36 and Y = 133,731.16, South 41 degrees 05 minutes 57 seconds West 210.90 feet to a point having Coordinates of X = 2,213,393.72 and Y = 133,572.23, South 36 degrees 26 minutes 27 seconds West 130.89 feet to a point having Coordinates of X = 2,213,315.97 and Y = 133,466.93, South 27 degrees 27 minutes 13 seconds West 119.41 feet to a point having Coordinates of X = 2,213,260.92 and Y = 133,360.97, South 08 degrees 14 minutes 18 seconds West 156.46 feet to a point having Coordinates of X = 2,213,238.50 and Y = 133,206.12, South 01 degrees 29 minutes 23 seconds West 156.94 feet to a point having Coordinates of X = 2,213,234.42 and Y = 133,049.23, South 02 degrees 10 minutes 24 seconds East 276.36 feet to a point having Coordinates of X = 2,213,244.90 and Y = 132,773.07, South 01 degrees 38 minutes 09 seconds East 214.03 feet to a point having Coordinates of X = 2,213,251.01 and Y = 132,559.13, South 05 degrees 25 minutes 34 seconds West 323.39 feet to a point having Coordinates of X = 2,213,220.43 and Y

= 132,237.19, South 10 degrees 09 minutes 37 seconds West 183.67 feet to a point having Coordinates of X = 2,213,188.03 and Y = 132,056.40, South 11 degrees 43 minutes 10 seconds West 170.64 feet to a point having Coordinates of X = 2,213,153.37 and Y = 131,889.32, South 15 degrees 57 minutes 22 seconds West 148.35 feet to a point having Coordinates of X = 2,213,112.59 and Y = 131,746.69, South 20 degrees 59 minutes 31 seconds West 290.25 feet to a point having Coordinates of X = 2,213,008.61 and Y = 131,475.70, North 69 degrees 09 minutes 20 seconds East 45.81 feet to a point having Coordinates of X = 2,213,051.42 and Y = 131,492.00, North 77 degrees 41 minutes 24 seconds East 181.56 feet to a point having Coordinates of X = 2,213,228.81 and Y = 131,530.71, North 83 degrees 54 minutes 57 seconds East 153.79 feet to a point having Coordinates of X = 2,213,381.73 and Y = 131,547.01, North 82 degrees 14 minutes 24 seconds East 181.08 feet to a point having Coordinates of X = 2,213,561.15 and Y = 131,571.46 and North 85 degrees 11 minutes 23 seconds East 61.01 feet to a point on the Western boundary of said State Lease No. 4237 having Coordinates of X = 2,213,621.94 and Y = 131,576.58; thence along the boundaries of said State Lease No. 4237 the following courses: South 38 degrees 58 minutes 33 seconds West 1,542.79 feet to a point having Coordinates of X = 2,212,651.54 and Y = 130,377.19 and South 71 degrees 39 minutes 04 seconds East 2,778.71 feet to a point having Coordinates of X = 2,215,288.97 and Y = 129,502.44; thence North 89 degrees 56 minutes 29 seconds West 11,774.10 feet to a point having Coordinates of X = 2,203,514.87 and Y = 129,514.46; thence North 5,997.52 feet to the point of beginning, containing approximately **1,459.70 acres**, all as more particularly outlined on a plat on file in the Office of Mineral Resources, Department of Natural Resources. All bearings, distances and coordinates are based on Louisiana Coordinate System of 1927, (North or South Zone).

NOTE: The above description of the Tract nominated for lease has been provided and corrected, where required, exclusively by the nomination party. Any mineral lease selected from this Tract and awarded by the Louisiana State Mineral and Energy Board shall be without warranty of any kind, either express, implied, or statutory, including, but not limited to, the implied warranties of merchantability and fitness for a particular purpose. Should the mineral lease awarded by the Louisiana State Mineral and Energy Board be subsequently modified, cancelled or abrogated due to the existence of conflicting leases, operating agreements, private claims or other future obligations or conditions which may affect all or any portion of the leased Tract, it shall not relieve the Lessee of the obligation to pay any bonus due thereon to the Louisiana State Mineral and Energy Board, nor shall the Louisiana State Mineral and Energy Board be obligated to refund any consideration paid by the Lessor prior to such modification, cancellation, or abrogation, including, but not limited to, bonuses, rentals and royalties.

NOTE: The State of Louisiana does hereby reserve, and this lease shall be subject to, the imprescriptible right of surface use in the nature of a

servitude in favor of the Department of Natural Resources, including its Offices and Commissions, for the sole purpose of implementing, constructing, servicing and maintaining approved coastal zone management and/or restoration projects. Utilization of any and all rights derived under this lease by the mineral lessee, its agents, successors or assigns, shall not interfere with nor hinder the reasonable surface use by the Department of Natural Resources, its Offices or Commissions, as herein above reserved.

Applicant: CYPRESS ENERGY CORPORATION

Bidder	Cash Payment	Price/Acre	Rental	Oil	Gas	Other

13090077
 Blocks
 Active_Lease

