

TRACT 43453 - Tensas Parish, Louisiana

All of the lands now or formerly constituting the beds and bottoms of all water bodies of every nature and description as to which title is vested in the State of Louisiana, together with all islands arising therein and other lands formed by accretion or by reliction, where allowed by law, excepting tax adjudicated lands, and not presently under mineral lease on September 11, 2013, situated in Tensas Parish, Louisiana, and more particularly described as follows: Beginning at a point having Coordinates of X = 2,375,409.40 and Y = 438,951.57; thence North 89 degrees 02 minutes 40 seconds East 5,713.00 feet to a point having Coordinates of X = 2,381,121.60 and Y = 439,046.85; thence North 58 degrees 12 minutes 36 seconds East 7,671.01 feet to a point having Coordinates of X = 2,387,641.84 and Y = 443,088.00; thence South 27 degrees 54 minutes 54 seconds East 5,790.26 feet to a point having Coordinates of X = 2,390,352.61 and Y = 437,971.47; thence South 66 degrees 56 minutes 00 seconds West 13,962.43 feet to a point having Coordinates of X = 2,377,506.48 and Y = 432,500.98; thence North 18 degrees 00 minutes 33 seconds West 6,782.91 feet to the point of beginning, **LESS AND EXCEPT** that portion of the above described tract that lies within the state of Mississippi, containing approximately **573 acres**, all as more particularly outlined on a plat on file in the Office of Mineral Resources, Department of Natural Resources. All bearings, distances and coordinates are based on Louisiana Coordinate System of 1927, (North or South Zone), where applicable.

NOTE: The above description of the Tract nominated for lease has been provided and corrected, where required, exclusively by the nomination party. Any mineral lease selected from this Tract and awarded by the Louisiana State Mineral and Energy Board shall be without warranty of any kind, either express, implied, or statutory, including, but not limited to, the implied warranties of merchantability and fitness for a particular purpose. Should the mineral lease awarded by the Louisiana State Mineral and Energy Board be subsequently modified, cancelled or abrogated due to the existence of conflicting leases, operating agreements, private claims or other future obligations or conditions which may affect all or any portion of the leased Tract, it shall not relieve the Lessee of the obligation to pay any bonus due thereon to the Louisiana State Mineral and Energy Board, nor shall the Louisiana State Mineral and Energy Board be obligated to refund any consideration paid by the Lessor prior to such modification, cancellation, or abrogation, including, but not limited to, bonuses, rentals and royalties.

Bidder	Cash Payment	Price/Acre	Rental	Oil	Gas	Other

--	--	--	--	--	--	--

Applicant: THEOPHILUS OIL, GAS & LAND SERVICES, LLC

1309007:
DOQQ2004

MISSISSIPPI RIVER

TENSAS PARISH

T11N - R12E

P.O.B.



TRACT 43454 - Tensas Parish, Louisiana

All of the lands now or formerly constituting the beds and bottoms of all water bodies of every nature and description as to which title is vested in the State of Louisiana, together with all islands arising therein and other lands formed by accretion or by reliction, where allowed by law, excepting tax adjudicated lands, and not presently under mineral lease on September 11, 2013, situated in Tensas Parish, Louisiana, and more particularly described as follows: Beginning at a point having Coordinates of X = 2,365,137.98 and Y = 438,451.89; thence North 88 degrees 15 minutes 55 seconds East 5,228.85 feet to a point having Coordinates of X = 2,370,364.43 and Y = 438,610.17; thence North 86 degrees 07 minutes 43 seconds East 5,056.51 feet to a point having Coordinates of X = 2,375,409.40 and Y = 438,951.57; thence South 18 degrees 00 minutes 33 seconds East 6,782.91 feet to a point having Coordinates of X = 2,377,506.48 and Y = 432,500.98; thence North 89 degrees 27 minutes 28 seconds West 12,456.63 feet to a point having Coordinates of X = 2,365,050.41 and Y = 432,618.89; thence North 00 degrees 51 minutes 36 seconds East 5,833.66 feet to the point of beginning, **LESS AND EXCEPT** that portion of the above described tract that lies within the state of Mississippi, containing approximately **354 acres**, all as more particularly outlined on a plat on file in the Office of Mineral Resources, Department of Natural Resources. All bearings, distances and coordinates are based on Louisiana Coordinate System of 1927, (North or South Zone), where applicable.

NOTE: The above description of the Tract nominated for lease has been provided and corrected, where required, exclusively by the nomination party. Any mineral lease selected from this Tract and awarded by the Louisiana State Mineral and Energy Board shall be without warranty of any kind, either express, implied, or statutory, including, but not limited to, the implied warranties of merchantability and fitness for a particular purpose. Should the mineral lease awarded by the Louisiana State Mineral and Energy Board be subsequently modified, cancelled or abrogated due to the existence of conflicting leases, operating agreements, private claims or other future obligations or conditions which may affect all or any portion of the leased Tract, it shall not relieve the Lessee of the obligation to pay any bonus due thereon to the Louisiana State Mineral and Energy Board, nor shall the Louisiana State Mineral and Energy Board be obligated to refund any consideration paid by the Lessor prior to such modification, cancellation, or abrogation, including, but not limited to, bonuses, rentals and royalties.

Applicant: THEOPHILUS OIL, GAS & LAND SERVICES, LLC

Bidder	Cash Payment	Price/Acre	Rental	Oil	Gas	Other

1309007;
DOQQ2004



TRACT 43455 - Tensas Parish, Louisiana

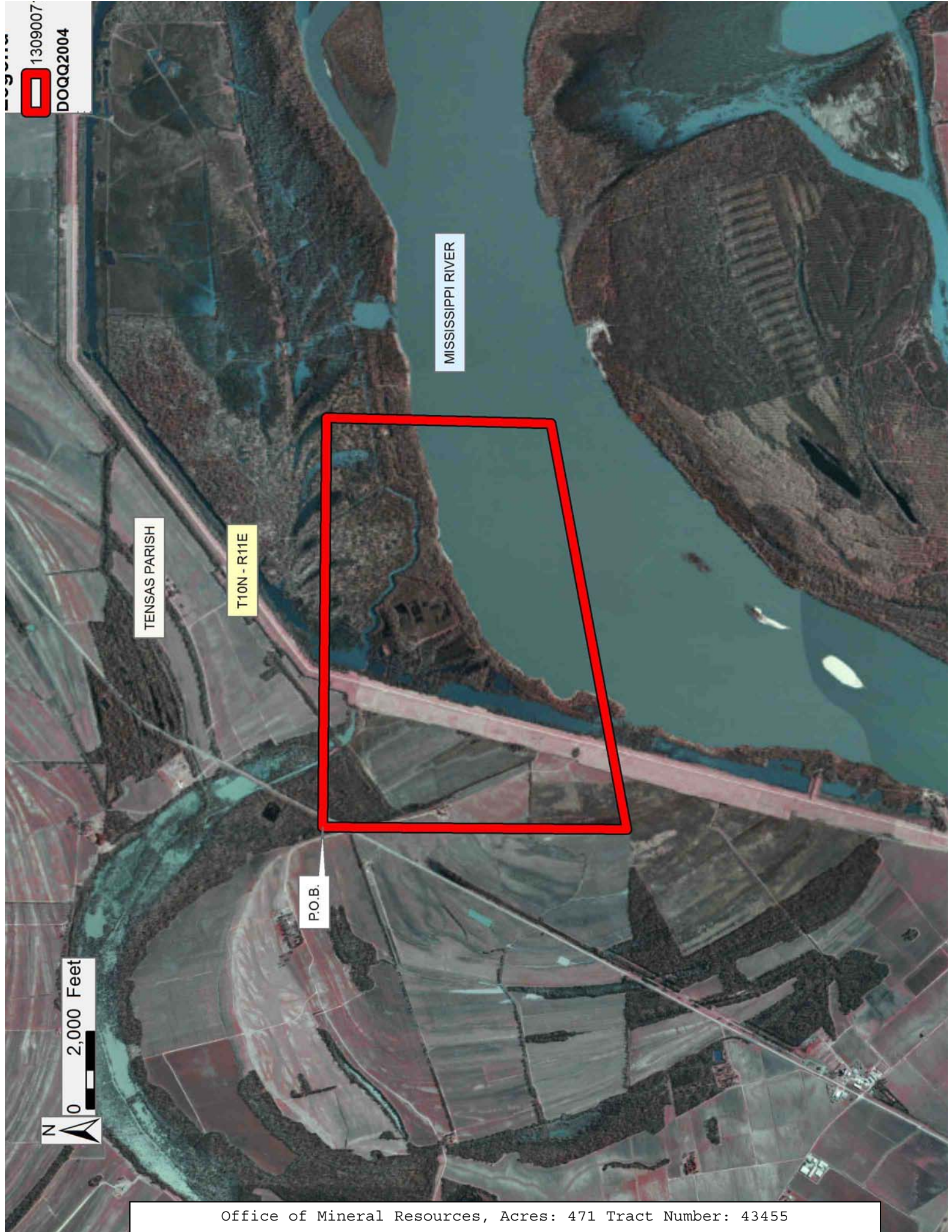
All of the lands now or formerly constituting the beds and bottoms of all water bodies of every nature and description as to which title is vested in the State of Louisiana, together with all islands arising therein and other lands formed by accretion or by reliction, where allowed by law, excepting tax adjudicated lands, and not presently under mineral lease on September 11, 2013, situated in Tensas Parish, Louisiana, and more particularly described as follows: Beginning at a point having Coordinates of X = 2,354,504.09 and Y = 438,439.99; thence North 89 degrees 56 minutes 09 seconds East 10,633.90 feet to a point having Coordinates of X = 2,365,137.98 and Y = 438,451.89; thence South 00 degrees 51 minutes 36 seconds West 5,833.66 feet to a point having Coordinates of X = 2,365,050.41 and Y = 432,618.89; thence South 78 degrees 49 minutes 32 seconds West 10,725.18 feet to a point having Coordinates of X = 2,354,528.56 and Y = 430,540.38; thence North 00 degrees 10 minutes 39 seconds West 7,899.65 feet to the point of beginning, **LESS AND EXCEPT** that portion of the above described tract that lies within the state of Mississippi, containing approximately **471 acres**, all as more particularly outlined on a plat on file in the Office of Mineral Resources, Department of Natural Resources. All bearings, distances and coordinates are based on Louisiana Coordinate System of 1927, (North or South Zone), where applicable.

NOTE: The above description of the Tract nominated for lease has been provided and corrected, where required, exclusively by the nomination party. Any mineral lease selected from this Tract and awarded by the Louisiana State Mineral and Energy Board shall be without warranty of any kind, either express, implied, or statutory, including, but not limited to, the implied warranties of merchantability and fitness for a particular purpose. Should the mineral lease awarded by the Louisiana State Mineral and Energy Board be subsequently modified, cancelled or abrogated due to the existence of conflicting leases, operating agreements, private claims or other future obligations or conditions which may affect all or any portion of the leased Tract, it shall not relieve the Lessee of the obligation to pay any bonus due thereon to the Louisiana State Mineral and Energy Board, nor shall the Louisiana State Mineral and Energy Board be obligated to refund any consideration paid by the Lessor prior to such modification, cancellation, or abrogation, including, but not limited to, bonuses, rentals and royalties.

Applicant: THEOPHILUS OIL, GAS & LAND SERVICES, LLC

Bidder	Cash Payment	Price/Acre	Rental	Oil	Gas	Other

1309007
DOQQ2004



TENSAS PARISH

T10N - R11E

MISSISSIPPI RIVER

P.O.B.

0 2,000 Feet

TRACT 43456 - Allen Parish, Louisiana

All of the lands now or formerly constituting the beds and bottoms of all water bodies of every nature and description as to which title is vested in the State of Louisiana, together with all islands arising therein and other lands formed by accretion or by reliction, where allowed by law, excepting tax adjudicated lands, and not presently under mineral lease on September 11, 2013, situated in Allen Parish, Louisiana, and more particularly described as follows: Beginning at the Southernmost Southwest corner of State Lease No. 20622 having Coordinates of X = 1,495,526.00 and Y = 696,170.00; thence along the boundary of said State Lease No. 20622 the following courses and distances: East 3,046.00 feet and North 894.00 feet to a point having Coordinates of X = 1,498,572.00 and Y = 697,064.00; thence East 2,506.00 feet to a point having Coordinates of X = 1,501,078.00 and Y = 697,064.00; thence South 2,004.00 feet to a point on the boundary of State Lease No. 20672 having Coordinates of X = 1,501,078.00 and Y = 695,060.00; thence West 3,278.00 feet to along the boundary of said State Lease No. 20672 to its Northwest corner having Coordinates of X = 1,497,800.00 and Y = 695,060.00; thence West 2,274.00 feet to a point having Coordinates of X = 1,495,526.00 and Y = 695,060.00; thence North 1,110.00 feet to the point of beginning, containing approximately **4 acres**, all as more particularly outlined on a plat on file in the Office of Mineral Resources, Department of Natural Resources. All bearings, distances and coordinates are based on Louisiana Coordinate System of 1927, (North or South Zone), where applicable.

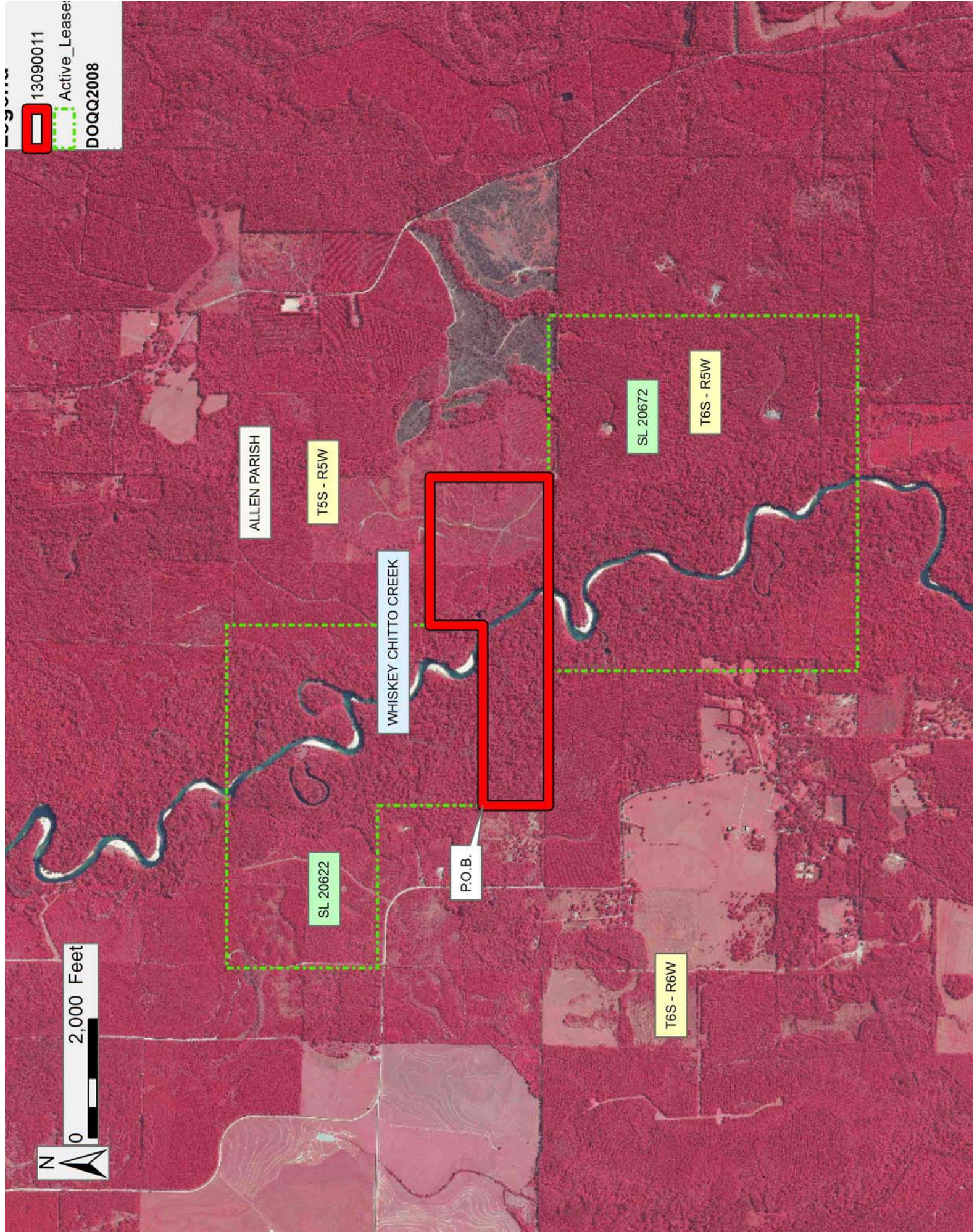
NOTE: The above description of the Tract nominated for lease has been provided and corrected, where required, exclusively by the nomination party. Any mineral lease selected from this Tract and awarded by the Louisiana State Mineral and Energy Board shall be without warranty of any kind, either express, implied, or statutory, including, but not limited to, the implied warranties of merchantability and fitness for a particular purpose. Should the mineral lease awarded by the Louisiana State Mineral and Energy Board be subsequently modified, cancelled or abrogated due to the existence of conflicting leases, operating agreements, private claims or other future obligations or conditions which may affect all or any portion of the leased Tract, it shall not relieve the Lessee of the obligation to pay any bonus due thereon to the Louisiana State Mineral and Energy Board, nor shall the Louisiana State Mineral and Energy Board be obligated to refund any consideration paid by the Lessor prior to such modification, cancellation, or abrogation, including, but not limited to, bonuses, rentals and royalties.

NOTE: The above Tract is located upon a restricted scenic river and all operations in this area must be conducted in strict conformity with the regulations of the Corps of Engineers, U.S. Army.

Applicant: PATRICK L. DONOHUE PETROLEUM PROPERTIES, INC.

Bidder	Cash Payment	Price/Acre	Rental	Oil	Gas	Other

13090011
Active_Lease:
DOQQ2008



TRACT 43457 - St. James Parish, Louisiana

All of the lands now or formerly constituting the beds and bottoms of all water bodies of every nature and description as to which title is vested in the State of Louisiana, together with all islands arising therein and other lands formed by accretion or by reliction, where allowed by law, excepting tax adjudicated lands, and not presently under mineral lease on September 11, 2013, situated in St. James Parish, Louisiana, and more particularly described as follows: Beginning at a point having Coordinates of X = 2,189,459.01 and Y = 492,700.00; thence South 24 degrees 00 minutes 35 seconds West 973.98 feet to the Northwest corner of State Lease No. 21077 having Coordinates of X = 2,189,062.71 and Y = 491,810.29; thence South 24 degrees 00 minutes 35 seconds West 3,733.31 feet along the Western boundary of said State Lease No. 21077 to its Southwest corner having Coordinates of X = 2,187,543.65 and Y = 488,400.00; thence West 2,503.81 feet to a point having Coordinates of X = 2,185,039.84 and Y = 488,400.00; thence North 06 degrees 54 minutes 58 seconds West 4,331.52 feet to a point having Coordinates of X = 2,184,518.26 and Y = 492,700.00; thence East 4,940.75 feet to the Point of Beginning, containing approximately **225 acres**, all as more particularly outlined on a plat on file in the Office of Mineral Resources, Department of Natural Resources. All bearings, distances and coordinates are based on Louisiana Coordinate System of 1927, (North or South Zone), where applicable.

NOTE: The above description of the Tract nominated for lease has been provided and corrected, where required, exclusively by the nomination party. Any mineral lease selected from this Tract and awarded by the Louisiana State Mineral and Energy Board shall be without warranty of any kind, either express, implied, or statutory, including, but not limited to, the implied warranties of merchantability and fitness for a particular purpose. Should the mineral lease awarded by the Louisiana State Mineral and Energy Board be subsequently modified, cancelled or abrogated due to the existence of conflicting leases, operating agreements, private claims or other future obligations or conditions which may affect all or any portion of the leased Tract, it shall not relieve the Lessee of the obligation to pay any bonus due thereon to the Louisiana State Mineral and Energy Board, nor shall the Louisiana State Mineral and Energy Board be obligated to refund any consideration paid by the Lessor prior to such modification, cancellation, or abrogation, including, but not limited to, bonuses, rentals and royalties.

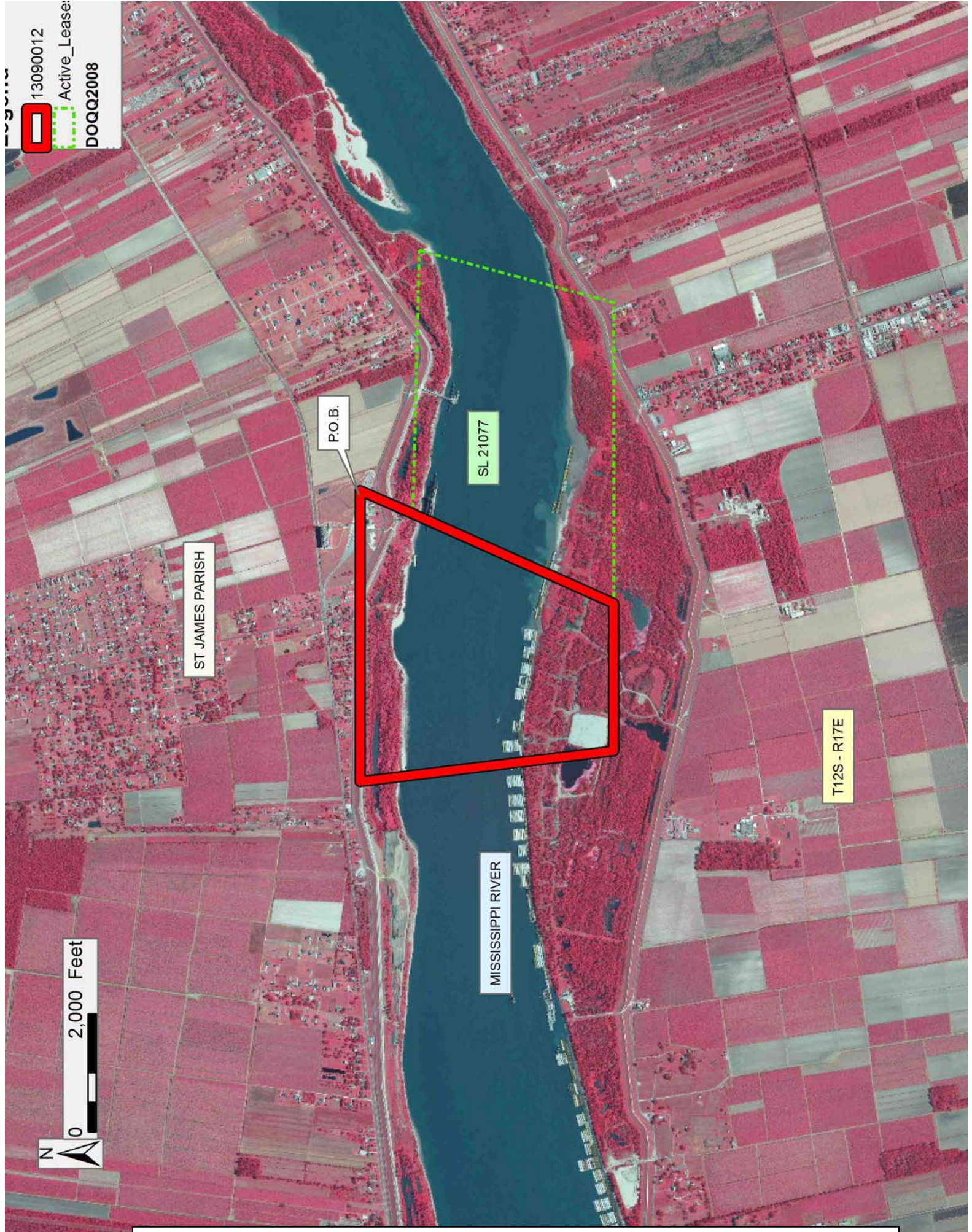
NOTE: The State of Louisiana does hereby reserve, and this lease shall be subject to, the imprescriptible right of surface use in the nature of a servitude in favor of the Department of Natural Resources, including its Offices and Commissions, for the sole purpose of implementing, constructing, servicing and maintaining approved coastal zone management and/or restoration projects. Utilization of any and all rights derived under this lease by the mineral lessee, its agents, successors or assigns, shall not interfere with nor hinder the reasonable surface use by the

Department of Natural Resources, its Offices or Commissions, as herein above reserved.

Applicant: CHARLESTON ENERGY INC.

Bidder	Cash Payment	Price/Acre	Rental	Oil	Gas	Other

13090012
Active Lease:
DOQQ2008



TRACT 43458 - Cameron Parish, Louisiana

All of the lands now or formerly constituting the beds and bottoms of all water bodies of every nature and description as to which title is vested in the State of Louisiana, together with all islands arising therein and other lands formed by accretion or by reliction, where allowed by law, excepting tax adjudicated lands, and not presently under mineral lease on September 11, 2013, situated in Cameron Parish, Louisiana, and more particularly described as follows: Beginning at a point having Coordinates of X = 1,559,752.00 and Y = 469,287.00; thence East 9,960.00 feet to a point having Coordinates of X = 1,569,712.00 and Y = 469,287.00; thence South 18,480.00 feet to a point having Coordinates of X = 1,569,712.00 and Y = 450,807.00; thence West 10,644.00 feet to a point having Coordinates of X = 1,559,068.00 and Y = 450,807.00; thence North 4,821.00 feet to a point on the boundary of State Lease No. 21182 having Coordinates of X = 1,559,068.00 and Y = 455,628.00; thence along the boundary of said State Lease No. 21182 the following courses and distances: East 7,207.00 feet, North 5,939.50 feet and North 69 degrees 39 minutes 59 seconds West 992.41 feet to its Northernmost corner and the Northeast corner of State Lease No. 19939 having Coordinates of X = 1,565,344.43 and Y = 461,912.35; thence North 69 degrees 39 minutes 59 seconds West 5,307.14 feet along the boundary of said State Lease No. 19939 to its Northwest corner, also being the Northeast corner of State Lease No. 19938 having Coordinates of X = 1,560,368.00 and Y = 463,756.50; thence West 616.00 feet along the boundary of said State Lease No. 19938 to a point having Coordinates of X = 1,559,752.00 and Y = 463,756.50; thence North 5,530.50 feet to the point of beginning, containing approximately **1,832 acres**, all as more particularly outlined on a plat on file in the Office of Mineral Resources, Department of Natural Resources. All bearings, distances and coordinates are based on Louisiana Coordinate System of 1927, (North or South Zone), where applicable.

NOTE: The above description of the Tract nominated for lease has been provided and corrected, where required, exclusively by the nomination party. Any mineral lease selected from this Tract and awarded by the Louisiana State Mineral and Energy Board shall be without warranty of any kind, either express, implied, or statutory, including, but not limited to, the implied warranties of merchantability and fitness for a particular purpose. Should the mineral lease awarded by the Louisiana State Mineral and Energy Board be subsequently modified, cancelled or abrogated due to the existence of conflicting leases, operating agreements, private claims or other future obligations or conditions which may affect all or any portion of the leased Tract, it shall not relieve the Lessee of the obligation to pay any bonus due thereon to the Louisiana State Mineral and Energy Board, nor shall the Louisiana State Mineral and Energy Board be obligated to refund any consideration paid by the Lessor prior to such modification, cancellation, or abrogation, including, but not limited to, bonuses, rentals and royalties.

NOTE: The State of Louisiana does hereby reserve, and this lease shall be subject to, the imprescriptible right of surface use in the nature of a servitude in favor of the Department of Natural Resources, including its Offices and Commissions, for the sole purpose of implementing, constructing, servicing and maintaining approved coastal zone management and/or restoration projects. Utilization of any and all rights derived under this lease by the mineral lessee, its agents, successors or assigns, shall not interfere with nor hinder the reasonable surface use by the Department of Natural Resources, its Offices or Commissions, as herein above reserved.

Applicant: BANFF ENERGY, L.L.C.

Bidder	Cash Payment	Price/Acre	Rental	Oil	Gas	Other

Legend

13090068

Active_Leases

DOQQ2008



0 3,000 Feet

CAMERON PARISH

T12S - R3W

P.O.B.

MALLARD BAY

SL 19939

SL 21182

SL 19938

GRAND LAKE

TRACT 43459 - Cameron Parish, Louisiana

All of the lands now or formerly constituting the beds and bottoms of all water bodies of every nature and description as to which title is vested in the State of Louisiana, together with all islands arising therein and other lands formed by accretion or by reliction, where allowed by law, excepting tax adjudicated lands, and not presently under mineral lease on September 11, 2013, situated in Cameron Parish, Louisiana, and more particularly described as follows: Beginning at a point having Coordinates of X = 1,569,712.00 and Y = 469,287.00; thence East 9,960.00 feet to a point having Coordinates of X = 1,579,672.00 and Y = 469,287.00; thence South 12,723.36 feet to a point on the boundary of State Lease No. 18506, as amended having Coordinates of X = 1,579,672.00 and Y = 456,563.64; thence along the boundary of said State Lease No. 18506 the following courses and distances: Northwesterly along an arc to the left having a radius of 1,521.60 feet and a chord bearing of North 79 degrees 21 minutes 51 seconds West 981.29 feet to a point having Coordinates of X = 1,578,707.57 and Y = 456,744.75, Southwesterly along an arc to the left having a radius of 1,676.59 feet and a chord bearing of South 73 degrees 23 minutes 51 seconds West 589.35 feet to a point having Coordinates of X = 1,578,142.79 and Y = 456,576.36, Southwesterly along an arc to the right having a radius of 4108.03 feet and a chord bearing of South 71 degrees 53 minutes 22 seconds West 328.05 feet to a point having Coordinates of X = 1,577,831.00 and Y = 456,474.39, South 1,578.82 feet to a point having Coordinates of X = 1,577,831.00 and Y = 454,895.57, Southeasterly along an arc to the left having a radius of 10,093.84 feet and a chord bearing of South 83 degrees 08 minutes 20 seconds East 214.85 feet to a point having Coordinates of X = 1,578,044.31 and Y = 454,869.90, Easterly along an arc to the left having a radius of 3,935.75 feet and a chord bearing of North 88 degrees 48 minutes 51 seconds East 710.21 feet to a point having Coordinates of X = 1,578,754.36 and Y = 454,884.60, Northeasterly along an arc to the left having a radius of 878.71 feet and a chord bearing of North 61 degrees 57 minutes 27 seconds East 502.41 feet to a point having Coordinates of X = 1,579,197.79 and Y = 455,120.80, and Northeasterly along an arc to the right having a radius of 4,023.62 feet and a chord bearing of North 51 degrees 45 minutes 36 seconds East 603.77 feet to a point having Coordinates of X = 1,579,672.00 and Y = 455,494.50; thence South 4,687.50 feet to a point having Coordinates of X = 1,579,672.00 and Y = 450,807.00; thence West 792.10 feet to a point on the boundary of State Lease No. 19354, as amended having Coordinates of X = 1,578,879.90 and Y = 450,807.00; thence along the boundary of said State Lease No. 19354 the following courses and distances: North 2,617.26 feet, North 89 degrees 34 minutes 24 seconds West 2,517.97 feet and South 2,636.01 feet to a point having Coordinates of X = 1,576,362.00 and Y = 450,807.00; thence West 6,650.00 feet to a point having Coordinates of X = 1,569,712.00 and Y = 450,807.00; thence North 18,480.00 feet to the point of beginning, **LESS AND EXCEPT** any right, title, and interest in lands owned by and not under lease from the State of Louisiana, on behalf of the Cameron Parish School Board, situated in Section 16, Township 13 South, Range 3 West, Cameron Parish, Louisiana, contained within the above

described tract, containing approximately **1,411 acres**, all as more particularly outlined on a plat on file in the Office of Mineral Resources, Department of Natural Resources. All bearings, distances and coordinates are based on Louisiana Coordinate System of 1927, (North or South Zone), where applicable.

NOTE: The above description of the Tract nominated for lease has been provided and corrected, where required, exclusively by the nomination party. Any mineral lease selected from this Tract and awarded by the Louisiana State Mineral and Energy Board shall be without warranty of any kind, either express, implied, or statutory, including, but not limited to, the implied warranties of merchantability and fitness for a particular purpose. Should the mineral lease awarded by the Louisiana State Mineral and Energy Board be subsequently modified, cancelled or abrogated due to the existence of conflicting leases, operating agreements, private claims or other future obligations or conditions which may affect all or any portion of the leased Tract, it shall not relieve the Lessee of the obligation to pay any bonus due thereon to the Louisiana State Mineral and Energy Board, nor shall the Louisiana State Mineral and Energy Board be obligated to refund any consideration paid by the Lessor prior to such modification, cancellation, or abrogation, including, but not limited to, bonuses, rentals and royalties.

NOTE: The State of Louisiana does hereby reserve, and this lease shall be subject to, the imprescriptible right of surface use in the nature of a servitude in favor of the Department of Natural Resources, including its Offices and Commissions, for the sole purpose of implementing, constructing, servicing and maintaining approved coastal zone management and/or restoration projects. Utilization of any and all rights derived under this lease by the mineral lessee, its agents, successors or assigns, shall not interfere with nor hinder the reasonable surface use by the Department of Natural Resources, its Offices or Commissions, as herein above reserved.

Applicant: BANFF ENERGY, L.L.C.

Bidder	Cash Payment	Price/Acre	Rental	Oil	Gas	Other

Legend



13090067

Active_Leases



DOQQ2008

CAMERON PARISH

T12S - R3W

P.O.B.

MALLARD BAY

SL 18506

SL 19354



TRACT 43460 - Cameron Parish, Louisiana

All of the lands now or formerly constituting the beds and bottoms of all water bodies of every nature and description as to which title is vested in the State of Louisiana, together with all islands arising therein and other lands formed by accretion or by reliction, where allowed by law, excepting tax adjudicated lands, and not presently under mineral lease on September 11, 2013, situated in Cameron Parish, Louisiana, and more particularly described as follows: Beginning at a point having Coordinates of X = 1,579,672.00 and Y = 463,980.00; thence East 8,239.00 feet to a point having Coordinates of X = 1,587,911.00 and Y = 463,980.00; thence South 16,035.00 feet to a point having Coordinates of X = 1,587,911.00 and Y = 447,945.00; thence West 14,682.00 feet to a point having Coordinates of X = 1,573,229.00 and Y = 447,945.00; thence North 2,862.00 feet to a point having Coordinates of X = 1,573,229.00 and Y = 450,807.00; thence East 3,133.00 feet to a point on the boundary of State Lease No. 19354, as amended having Coordinates of X = 1,576,362.00 and Y = 450,807.00; thence along the boundary of said State Lease No. 19354 the following courses and distances: South 288.77 feet, East 2,517.90 feet and North 288.77 feet to a point having Coordinates of X = 1,578,879.90 and Y = 450,807.00; thence East 792.10 feet to a point having Coordinates of X = 1,579,672.00 and Y = 450,807.00; thence North 4,687.50 feet to a point on the boundary of State Lease No. 18506, as amended having Coordinates of X = 1,579,672.00 and Y = 455,494.50; thence along the boundary of said State Lease No. 18506 the following courses and distances: Northeasterly along an arc to the right having a radius of 4,023.62 feet and a chord bearing of North 60 degrees 28 minutes 29 seconds East 619.07 feet to a point having Coordinates of X = 1,580,210.67 and Y = 455,799.58, Northwesterly along an arc to the left having a radius of 651.63 feet and a chord bearing of North 15 degrees 14 minutes 10 seconds West 394.00 feet to a point having Coordinates of X = 1,580,107.13 and Y = 456,179.73, Northwesterly along an arc to the left having a radius of 1,480.88 feet and a chord bearing of North 46 degrees 14 minutes 44 seconds West 470.55 feet to a point having Coordinates of X = 1,579,767.25 and Y = 456,505.15 and Northwesterly along an arc to the left having a radius of 1,521.60 feet and a chord bearing of North 58 degrees 26 minutes 53 seconds West 111.77 feet to a point having Coordinates of X = 1,579,672.00 and Y = 456,563.64; thence North 7,416.36 feet to the point of beginning, **LESS AND EXCEPT** that portion of Snake Bayou and Willow Lake which is Judgment Agreement or Compromise acreage that falls within the above described tract, nominated tract containing approximately **929 acres**, all as more particularly outlined on a plat on file in the Office of Mineral Resources, Department of Natural Resources. All bearings, distances and coordinates are based on Louisiana Coordinate System of 1927, (North or South Zone), where applicable.

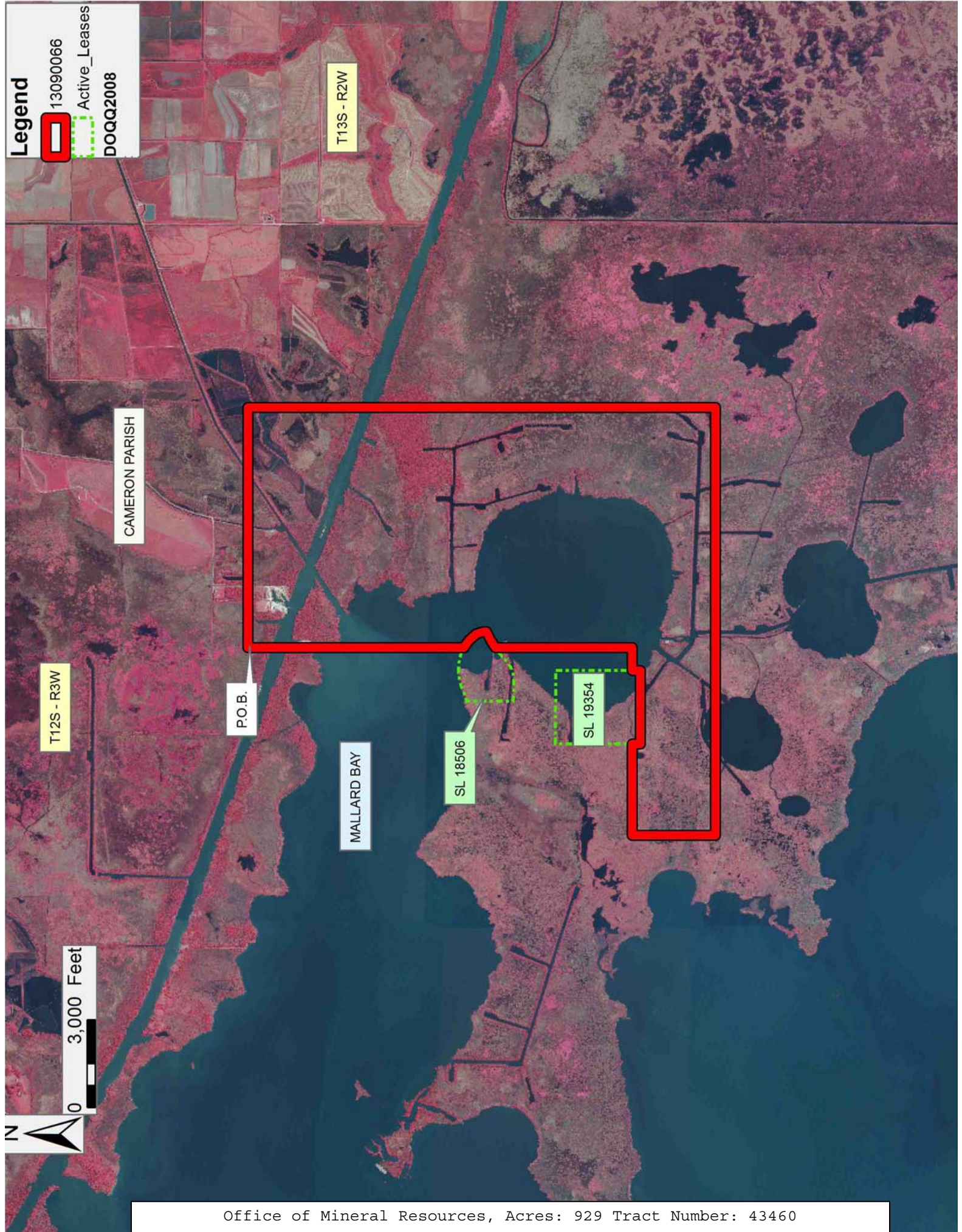
NOTE: The above description of the Tract nominated for lease has been provided and corrected, where required, exclusively by the nomination party. Any mineral lease selected from this Tract and awarded by the Louisiana State Mineral and Energy Board shall be without warranty of any kind, either express, implied, or statutory, including, but not limited

to, the implied warranties of merchantability and fitness for a particular purpose. Should the mineral lease awarded by the Louisiana State Mineral and Energy Board be subsequently modified, cancelled or abrogated due to the existence of conflicting leases, operating agreements, private claims or other future obligations or conditions which may affect all or any portion of the leased Tract, it shall not relieve the Lessee of the obligation to pay any bonus due thereon to the Louisiana State Mineral and Energy Board, nor shall the Louisiana State Mineral and Energy Board be obligated to refund any consideration paid by the Lessor prior to such modification, cancellation, or abrogation, including, but not limited to, bonuses, rentals and royalties.

NOTE: The State of Louisiana does hereby reserve, and this lease shall be subject to, the imprescriptible right of surface use in the nature of a servitude in favor of the Department of Natural Resources, including its Offices and Commissions, for the sole purpose of implementing, constructing, servicing and maintaining approved coastal zone management and/or restoration projects. Utilization of any and all rights derived under this lease by the mineral lessee, its agents, successors or assigns, shall not interfere with nor hinder the reasonable surface use by the Department of Natural Resources, its Offices or Commissions, as herein above reserved.

Applicant: BANFF ENERGY, L.L.C.

Bidder	Cash Payment	Price/Acre	Rental	Oil	Gas	Other



TRACT 43461 - Portion of Blocks 18, and 19, Breton Sound Area, Plaquemines Parish, Louisiana

All of the lands now or formerly constituting the beds and bottoms of all water bodies of every nature and description as to which title is vested in the State of Louisiana, together with all islands arising therein and other lands formed by accretion or by reliction, where allowed by law, excepting tax adjudicated lands, and not presently under mineral lease on September 11, 2013, situated in Plaquemines Parish, Louisiana, and more particularly described as follows: Beginning at a point having Coordinates of X = 2,664,850.00 and Y = 351,830.00, said point being the Northwest corner of Block 19, Breton Sound Area; thence East 5,800.00 feet along the North line of said Block 19, Breton Sound Area, to a point having Coordinates of X = 2,670,650.00 and Y = 351,830.00; thence South 9,075.00 feet to a point having Coordinates of X = 2,670,650.00 and Y = 342,755.00, said point being the Easternmost Northeast corner of State Lease No. 16610, as amended; thence along the Northern boundary of said State Lease No. 16610, as amended, the following courses: North 49 degrees 38 minutes 08 seconds West 2,624.88 feet to a point having Coordinates of X = 2,668,650.00 and Y = 344,455.00; and West 832.00 feet to a point having Coordinates of X = 2,667,818.00 and Y = 344,455.00, said point being the Southeast corner of State Lease No. 20433; thence along the Eastern, Northern, and Western boundaries of said State Lease No. 20433 the following courses: North 3,079.00 feet to a point having Coordinates of X = 2,667,818.00 and Y = 347,534.00, said point being the Northeast corner of said State Lease No. 20433; West 2,968.00 feet to a point having Coordinates of X = 2,664,850.00 and Y = 347,534.00, said point being the Northwest corner of said State Lease No. 20433, said point also being on the line common to Blocks 18 and 19, Breton Sound Area; and South 3,079.00 feet along said line common to Blocks 18 and 19, Breton Sound Area, to a point having Coordinates of X = 2,664,850.00 and Y = 344,455.00, said point being the Southwest corner of said State Lease No. 20433, said point also being the Northwest corner of said State Lease No. 16610, as amended; thence South 2,345.00 feet along the Western boundary of said State Lease No. 16610, as amended, said boundary also being said line common to Blocks 18 and 19, Breton Sound Area, to a point having Coordinates of X = 2,664,850.00 and Y = 342,110.00, said point being the Westernmost Southwest corner of said State Lease No. 16610, as amended; thence West 7,769.00 feet to a point having Coordinates of X = 2,657,081.00 and Y = 342,110.00, said point being in Block 18, Breton Sound Area; thence North 9,720.00 feet to a point having Coordinates of X = 2,657,081.00 and Y = 351,830.00, said point being on the North line of said Block 18, Breton Sound Area; thence East 7,769.00 feet along said North line of said Block 18, Breton Sound Area, to the point of beginning, **LESS AND EXCEPT** in its entirety, the following described tract, being the composite boundaries of State of Louisiana State Lease Nos. 16642, as amended, 16543, as amended, and 16594, as amended: Commencing at a point being the point of beginning of the above described nominated tract having Coordinates of X = 2,664,850.00 and Y = 351,830.00; thence South 37 degrees 30 minutes 37 seconds West 6,460.80 feet to a point being a point of beginning of said

State Lease No. 16442, as amended, having Coordinates of X = 2,660,916.00 and Y = 346,705.00; thence along the boundary of said State Lease No. 16442 the following courses: South 26 degrees 26 minutes 51 seconds East 217.79 feet to a point having Coordinates of X = 2,661,013.00 and Y = 346,510.00, South 14 degrees 29 minutes 23 seconds East 643.47 feet to a point having Coordinates of X = 2,661,174.00 and Y = 345,887.00, South 04 degrees 18 minutes 00 seconds East 400.13 feet to a point having Coordinates of X = 2,661,204.00 and Y = 345,488.00, South 03 degrees 43 minutes 08 seconds West 200.42 feet to a point having Coordinates of X = 2,661,191.00 and Y = 345,288.00, South 13 degrees 04 minutes 51 seconds West 349.06 feet to a point having Coordinates of X = 2,661,112.00 and Y = 344,948.00, South 25 degrees 05 minutes 47 seconds West 174.47 feet to a point having Coordinates of X = 2,661,038.00 and Y = 344,790.00, South 38 degrees 08 minutes 49 seconds West 314.08 feet to a point having Coordinates of X = 2,660,844.00 and Y = 344,543.00, South 52 degrees 32 minutes 36 seconds West 144.70 feet to a point being the Northeast corner of State Lease No. 16543, as amended, having Coordinates of X = 2,660,729.14 and Y = 344,455.00; thence along the boundary of said State Lease No. 16443 the following courses: South 52 degrees 32 minutes 36 seconds West 11.51 feet to a point having Coordinates of X = 2,660,720.00 and Y = 344,448.00, South 62 degrees 09 minutes 57 seconds West 141.35 feet to a point having Coordinates of X = 2,660,595.00 and Y = 344,382.00, South 72 degrees 50 minutes 17 seconds West 284.68 feet to a point having Coordinates of X = 2,660,323.00 and Y = 344,298.00, South 79 degrees 45 minutes 05 seconds West 455.26 feet to a point having Coordinates of X = 2,659,875.00 and Y = 344,217.00, South 74 degrees 52 minutes 07 seconds West 406.08 feet to a point having Coordinates of X = 2,659,483.00 and Y = 344,111.00, South 70 degrees 40 minutes 12 seconds West 404.82 feet to a point having Coordinates of X = 2,659,101.00 and Y = 343,977.00, South 80 degrees 08 minutes 03 seconds West 560.29 feet to a point having Coordinates of X = 2,658,549.00 and Y = 343,881.00, North 84 degrees 07 minutes 57 seconds West 254.33 feet to a point having Coordinates of X = 2,658,296.00 and Y = 343,907.00, North 55 degrees 35 minutes 50 seconds West 111.50 feet to a point having Coordinates of X = 2,658,204.00 and Y = 343,970.00, North 18 degrees 20 minutes 59 seconds West 212.82 feet to a point having Coordinates of X = 2,658,137.00 and Y = 344,172.00, North 07 degrees 45 minutes 26 seconds East 285.61 feet to a point on the Western boundary of said State Lease No. 16445, as amended, having Coordinates of X = 2,658,175.55 and Y = 344,455.00; thence continue along the boundary of said State Lease No. 16442 the following courses: North 07 degrees 45 minutes 26 seconds East 40.37 feet to a point having Coordinates of X = 2,658,181.00 and Y = 344,495.00, North 20 degrees 25 minutes 34 seconds East 309.46 feet to a point having Coordinates of X = 2,658,289.00 and Y = 344,785.00, North 16 degrees 34 minutes 26 seconds East 175.28 feet to a point having Coordinates of X = 2,658,339.00 and Y = 344,953.00, North 13 degrees 50 minutes 27 seconds East 71.06 feet to a point having Coordinates of X = 2,658,356.00 and Y = 345,022.00, North 19 degrees 54 minutes 59 seconds East 73.39 feet to a point having Coordinates of X = 2,658,381.00 and Y = 345,091.00, North 03 degrees 18 minutes 07 seconds

West 52.09 feet to a point having Coordinates of X = 2,658,378.00 and Y = 345,143.00, North 12 degrees 31 minutes 44 seconds West 36.88 feet to a point having Coordinates of X = 2,658,370.00 and Y = 345,179.00, North 34 degrees 05 minutes 42 seconds West 78.49 feet to a point having Coordinates of X = 2,658,326.00 and Y = 345,244.00, North 25 degrees 12 minutes 04 seconds West 18.79 feet to a point having Coordinates of X = 2,658,318.00 and Y = 345,261.00, North 27 degrees 53 minutes 50 seconds West 38.47 feet to a point having Coordinates of X = 2,658,300.00 and Y = 345,295.00, North 30 degrees 34 minutes 45 seconds West 25.55 feet to a point having Coordinates of X = 2,658,287.00 and Y = 345,317.00, North 32 degrees 44 minutes 07 seconds West 49.93 feet to a point having Coordinates of X = 2,658,260.00 and Y = 345,359.00, North 39 degrees 12 minutes 03 seconds West 727.80 feet to a point having Coordinates of X = 2,657,800.00 and Y = 345,923.00, and North 32 degrees 21 minutes 48 seconds West 121.78 feet to a point being the Southwest corner of State Lease No. 16594, as amended, having Coordinates of X = 2,657,734.81 and Y = 346,025.86; thence along the boundary of said State Lease No. 16594 the following courses: North 32 degrees 21 minutes 48 seconds West 81.85 feet to a point having Coordinates of X = 2,657,691.00 and Y = 346,095.00, North 19 degrees 50 minutes 27 seconds West 103.12 feet to a point having Coordinates of X = 2,657,656.00 and Y = 346,192.00, North 11 degrees 18 minutes 36 seconds West 66.29 feet to a point having Coordinates of X = 2,657,643.00 and Y = 346,257.00, North 02 degrees 34 minutes 59 seconds West 133.14 feet to a point having Coordinates of X = 2,657,637.00 and Y = 346,390.00, North 07 degrees 41 minutes 02 seconds East 127.14 feet to a point having Coordinates of X = 2,657,654.00 and Y = 346,516.00, North 18 degrees 26 minutes 06 seconds East 63.25 feet to a point having Coordinates of X = 2,657,674.00 and Y = 346,576.00, North 31 degrees 17 minutes 35 seconds East 119.36 feet to a point having Coordinates of X = 2,657,736.00 and Y = 346,678.00, North 82 degrees 09 minutes 17 seconds East 739.93 feet to a point having Coordinates of X = 2,658,469.00 and Y = 346,779.00, North 89 degrees 06 minutes 36 seconds East 708.09 feet to a point having Coordinates of X = 2,659,177.00 and Y = 346,790.00, South 85 degrees 10 minutes 31 seconds East 604.69 feet to a point on the Northern boundary of said State Lease No. 16442, as amended, having Coordinates of X = 2,659,779.55 and Y = 346,739.14, thence South 88 degrees 16 minutes 45 seconds East 1,136.96 feet to the point of beginning, the nominated tract containing approximately **2,362.63 acres**, all as more particularly outlined on a plat on file in the Office of Mineral Resources, Department of Natural Resources. All bearings, distances and coordinates are based on Louisiana Coordinate System of 1927, (North or South Zone), where applicable.

NOTE: The above description of the Tract nominated for lease has been provided and corrected, where required, exclusively by the nomination party. Any mineral lease selected from this Tract and awarded by the Louisiana State Mineral and Energy Board shall be without warranty of any kind, either express, implied, or statutory, including, but not limited to, the implied warranties of merchantability and fitness for a particular

purpose. Should the mineral lease awarded by the Louisiana State Mineral and Energy Board be subsequently modified, cancelled or abrogated due to the existence of conflicting leases, operating agreements, private claims or other future obligations or conditions which may affect all or any portion of the leased Tract, it shall not relieve the Lessee of the obligation to pay any bonus due thereon to the Louisiana State Mineral and Energy Board, nor shall the Louisiana State Mineral and Energy Board be obligated to refund any consideration paid by the Lessor prior to such modification, cancellation, or abrogation, including, but not limited to, bonuses, rentals and royalties.

NOTE: The State of Louisiana does hereby reserve, and this lease shall be subject to, the imprescriptible right of surface use in the nature of a servitude in favor of the Department of Natural Resources, including its Offices and Commissions, for the sole purpose of implementing, constructing, servicing and maintaining approved coastal zone management and/or restoration projects. Utilization of any and all rights derived under this lease by the mineral lessee, its agents, successors or assigns, shall not interfere with nor hinder the reasonable surface use by the Department of Natural Resources, its Offices or Commissions, as herein above reserved.

NOTE: It appears, according to our records, that a portion of this Tract is located within the restrictive safety fairway area as set out by the Corps of Engineers, U.S. Army and/or the restrictive anchorage area as set out by the U.S. Coast Guard.

NOTE: This tract is located in an area designated by the Louisiana Legislature or the Wildlife and Fisheries Commission as a Public Oyster Seed Ground, Reservation, or area of Calcasieu or Sabine Lake. Proposed projects occurring in these areas will be evaluated on a case by case basis by Louisiana Department of Wildlife & Fisheries. Modifications to proposed project features including, but not limited to, access routes, well sites, flowlines, and appurtenant structures maybe required by the Louisiana Department of Wildlife and Fisheries. In addition, compensatory mitigation will be required to offset unavoidable habitat impacts.

Bidder	Cash Payment	Price/Acre	Rental	Oil	Gas	Other

Applicant: ROBERT A. SCHROEDER, INC.

Legend

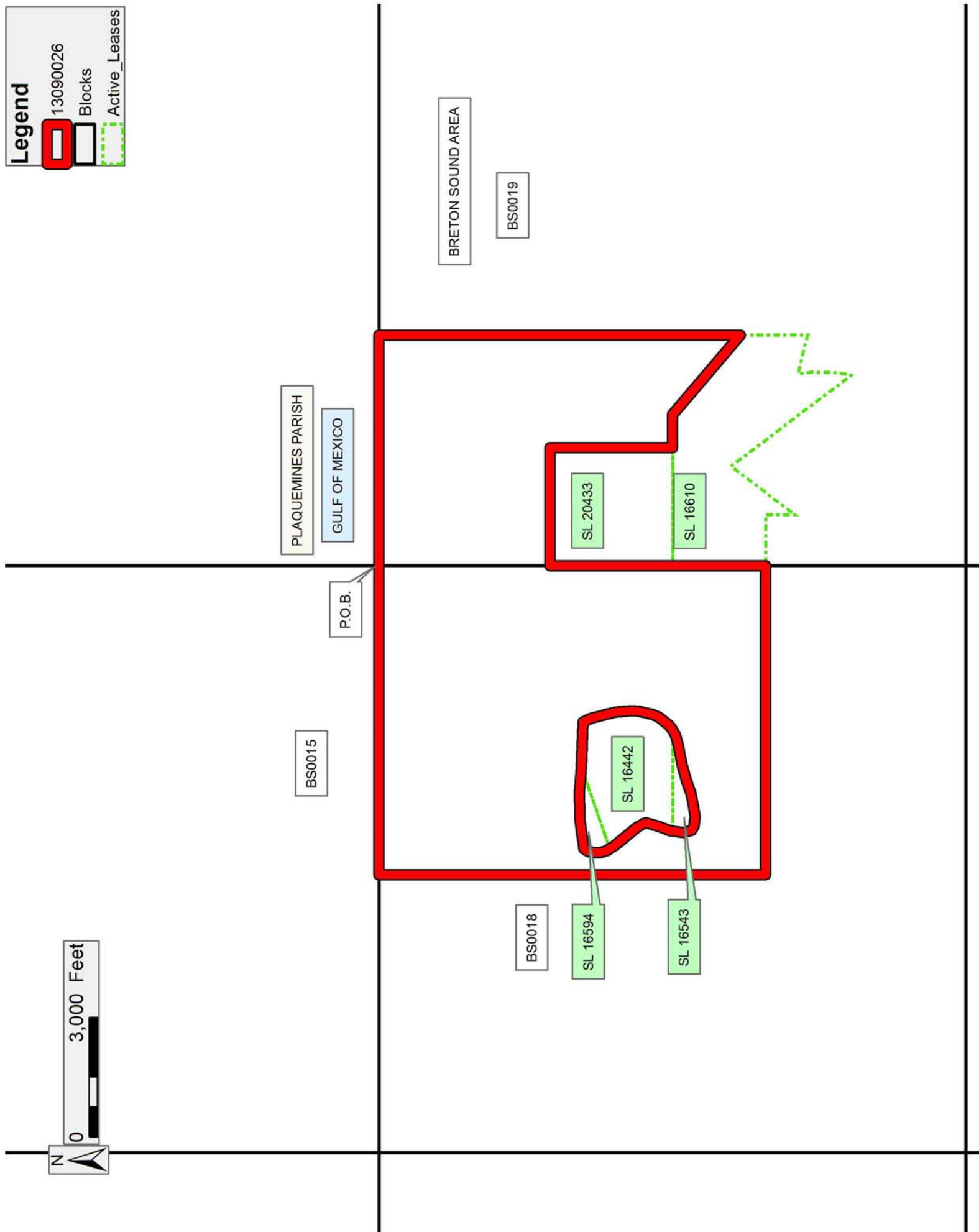
13090026

Blocks

Active_Leases



0 3,000 Feet



TRACT 43462 - Portion of Blocks 18, and 19, Breton Sound Area, Plaquemines Parish, Louisiana

All of the lands now or formerly constituting the beds and bottoms of all water bodies of every nature and description as to which title is vested in the State of Louisiana, together with all islands arising therein and other lands formed by accretion or by reliction, where allowed by law, excepting tax adjudicated lands, and not presently under mineral lease on September 11, 2013, situated in Plaquemines Parish, Louisiana, and more particularly described as follows: Beginning at a point having Coordinates of X = 2,664,850.00 and Y = 337,080.00, said point being the Southwest corner of Block 18, Breton Sound Area; thence West 7,769.00 feet on and along the South line of said Block 18, Breton Sound Area, to a point having Coordinates of X = 2,657,081.00 and Y = 337,080.00; thence North 5,030.00 feet to a point having Coordinates of X = 2,657,081.00 and Y = 342,110.00; thence East 7,769.00 feet to a point having Coordinates of X = 2,664,850.00 and Y = 342,110.00, said point being on the line common to Blocks 18 and 19, Breton Sound Area, said point also being a Southwest corner of State Lease No. 16610 (northern portion), as amended; thence on and along the Southern and Western boundaries of said State Lease No. 16610 (Northern portion), as amended, the following courses and distances, to wit: East 1,278.88 feet to a point having Coordinates of X = 2,666,128.88 and Y = 342,110.00; and South 741.88 feet to a point having Coordinates of X = 2,666,128.88 and Y = 341,368.12, said point being on a Western boundary of State Lease No. 16443, as amended; thence on and along the Western and Southern boundaries of said State Lease No. 16443, as amended, the following courses and distances, to wit: South 915.42 feet to a point having Coordinates of X = 2,666,128.88 and Y = 340,452.70; South 06 degrees 53 minutes 21 seconds West 704.12 feet to a point having Coordinates of X = 2,666,044.42 and Y = 339,753.66; South 02 degrees 27 minutes 12 seconds East 659.24 feet to a point having Coordinates of X = 2,666,072.64 and Y = 339,095.02; South 38 degrees 35 minutes 54 seconds East 1,354.22 feet to a point having Coordinates of X = 2,666,917.48 and Y = 338,036.64; South 31 degrees 45 minutes 38 seconds East 121.25 feet to a point having Coordinates of X = 2,666,981.30 and Y = 337,933.55; South 28 degrees 35 minutes 41 seconds East 49.75 feet to a point having Coordinates of X = 2,667,005.11 and Y = 337,889.87; South 22 degrees 36 minutes 27 seconds East 99.79 feet to a point having Coordinates of X = 2,667,043.47 and Y = 337,797.75; South 20 degrees 44 minutes 54 seconds East 115.48 feet to a point having Coordinates of X = 2,667,084.38 and Y = 337,689.76; South 21 degrees 15 minutes 32 seconds East 52.95 feet to a point having Coordinates of X = 2,667,103.58 and Y = 337,640.41; North 82 degrees 36 minutes 08 seconds East 154.01 feet to a point having Coordinates of X = 2,667,256.31 and Y = 337,660.24; North 84 degrees 17 minutes 19 seconds East 159.47 feet to a point having Coordinates of X = 2,667,414.99 and Y = 337,676.11; North 87 degrees 18 minutes 25 seconds East 168.78 feet to a point having Coordinates of X = 2,667,583.58 and Y = 337,684.04; North 89 degrees 37 minutes 10 seconds East 299.52 feet to a point having Coordinates of X = 2,667,883.09 and Y = 337,686.03; South 86 degrees 56 minutes 01 seconds East 222.47 feet to a point having

Coordinates of X = 2,668,105.24 and Y = 337,674.13; South 87 degrees 17 minutes 55 seconds East 210.48 feet to a point having Coordinates of X = 2,668,315.49 and Y = 337,664.21; South 86 degrees 36 minutes 02 seconds East 200.68 feet to a point having Coordinates of X = 2,668,515.82 and Y = 337,652.31; and South 82 degrees 37 minutes 32 seconds East 154.22 feet to a point having Coordinates of X = 2,668,668.76 and Y = 337,632.52, said point being on a Southern boundary of said State Lease No. 16610 (Southern portion), as amended; thence on and along the Southern and Eastern boundaries of said State Lease No. 16610 (Southern portion), as amended, the following courses and distances, to wit: South 82 degrees 37 minutes 32 seconds East 245.00 feet to a point having Coordinates of X = 2,668,911.73 and Y = 337,601.07; South 82 degrees 15 minutes 01 seconds East 250.22 feet to a point having Coordinates of X = 2,669,159.66 and Y = 337,567.33; South 79 degrees 19 minutes 26 seconds East 267.85 feet to a point having Coordinates of X = 2,669,422.87 and Y = 337,517.71; South 79 degrees 51 minutes 47 seconds East 56.42 feet to a point having Coordinates of X = 2,669,478.41 and Y = 337,507.78; North 12 degrees 00 minutes 01 seconds West 95.37 feet to a point having Coordinates of X = 2,669,458.58 and Y = 337,601.07; North 17 degrees 48 minutes 40 seconds West 116.75 feet to a point having Coordinates of X = 2,669,422.87 and Y = 337,712.22; North 21 degrees 04 minutes 52 seconds West 148.91 feet to a point having Coordinates of X = 2,669,369.31 and Y = 337,851.16; North 23 degrees 01 minutes 23 seconds West 187.62 feet to a point having Coordinates of X = 2,669,295.93 and Y = 338,023.84; North 25 degrees 14 minutes 37 seconds West 260.46 feet to a point having Coordinates of X = 2,669,184.85 and Y = 338,259.43; North 23 degrees 56 minutes 51 seconds West 97.73 feet to a point having Coordinates of X = 2,669,145.18 and Y = 338,348.75; and North 13 degrees 39 minutes 40 seconds West 75.58 feet to a point having Coordinates of X = 2,669,127.33 and Y = 338,422.19, said point being on an Eastern boundary of said State Lease No. 16443, as amended; thence on and along said Eastern boundary of said State Lease No. 16443, as amended, the following courses and distances, to wit: North 02 degrees 27 minutes 15 seconds East 5.61 feet to a point having Coordinates of X = 2,669,127.57 and Y = 338,427.79; North 02 degrees 29 minutes 01 seconds East 40.09 feet to a point having Coordinates of X = 2,669,129.31 and Y = 338,467.84; North 11 degrees 53 minutes 25 seconds East 38.54 feet to a point having Coordinates of X = 2,669,137.25 and Y = 338,505.55; North 23 degrees 22 minutes 05 seconds East 235.28 feet to a point having Coordinates of X = 2,669,230.57 and Y = 338,721.53; North 27 degrees 32 minutes 12 seconds East 310.93 feet to a point having Coordinates of X = 2,669,374.32 and Y = 338,997.24; North 18 degrees 46 minutes 56 seconds East 503.86 feet to a point having Coordinates of X = 2,669,536.55 and Y = 339,474.27; and North 11 degrees 53 minutes 58 seconds East 495.32 feet to a point having Coordinates of X = 2,669,638.68 and Y = 339,958.95, said point being on an Eastern boundary of said State Lease No. 16610 (Northern portion), as amended; thence on and along said Eastern boundary of said State Lease No. 16610 (Northern portion), as amended, the following courses and distances, to wit: North 11 degrees 53 minutes 58 seconds East 140.68 feet to a point having Coordinates of X = 2,669,667.69 and Y =

340,096.60; North 06 degrees 34 minutes 02 seconds East 354.64 feet to a point having Coordinates of X = 2,669,708.25 and Y = 340,448.91; North 00 degrees 44 minutes 07 seconds East 487.86 feet to a point having Coordinates of X = 2,669,714.51 and Y = 340,936.73; North 05 degrees 42 minutes 56 seconds West 357.95 feet to a point having Coordinates of X = 2,669,678.86 and Y = 341,292.90; thence South 76 degrees 14 minutes 07 seconds East 999.85 feet to a point having Coordinates of X = 2,670,650.00 and Y = 341,055.00; and North 1,700.00 feet to a point having Coordinates of X = 2,670,650.00 and Y = 342,755.00, said point being a Northeast corner said of State Lease No. 16610 (Northern portion), as amended; thence North 9,075.00 feet to a point having Coordinates of X = 2,670,650.00 and Y = 351,830.00, said point being on the North line of said Block 19, Breton Sound Area; thence East 3,550.00 feet on and along said North line of said Block 19, Breton Sound Area, to a point having Coordinates of X = 2,674,200.00 and Y = 351,830.00; thence South 3,400.00 feet to a point having Coordinates of X = 2,674,200.00 and Y = 348,430.00, said point being the Northwest corner of State Lease No. 16823; thence South 2,600.00 feet on and along the Western boundary of said State Lease No. 16823 to a point having Coordinates of X = 2,674,200.00 and Y = 345,830.00, said point being the Southwest corner of said State Lease No. 16823; thence South 8,750.00 feet to a point having Coordinates of X = 2,674,200.00 and Y = 337,080.00, said point being on the South line of said Block 19, Breton Sound Area; thence West 9,350.00 feet on and along said South line of said Block 19, Breton Sound Area, to the point of beginning, containing approximately **2,414.80 acres**, all as more particularly outlined on a plat on file in the Office of Mineral Resources, Department of Natural Resources. All bearings, distances and coordinates are based on Louisiana Coordinate System of 1927, (North or South Zone), where applicable.

NOTE: The above description of the Tract nominated for lease has been provided and corrected, where required, exclusively by the nomination party. Any mineral lease selected from this Tract and awarded by the Louisiana State Mineral and Energy Board shall be without warranty of any kind, either express, implied, or statutory, including, but not limited to, the implied warranties of merchantability and fitness for a particular purpose. Should the mineral lease awarded by the Louisiana State Mineral and Energy Board be subsequently modified, cancelled or abrogated due to the existence of conflicting leases, operating agreements, private claims or other future obligations or conditions which may affect all or any portion of the leased Tract, it shall not relieve the Lessee of the obligation to pay any bonus due thereon to the Louisiana State Mineral and Energy Board, nor shall the Louisiana State Mineral and Energy Board be obligated to refund any consideration paid by the Lessor prior to such modification, cancellation, or abrogation, including, but not limited to, bonuses, rentals and royalties.

NOTE: The State of Louisiana does hereby reserve, and this lease shall be subject to, the imprescriptible right of surface use in the nature of a

servitude in favor of the Department of Natural Resources, including its Offices and Commissions, for the sole purpose of implementing, constructing, servicing and maintaining approved coastal zone management and/or restoration projects. Utilization of any and all rights derived under this lease by the mineral lessee, its agents, successors or assigns, shall not interfere with nor hinder the reasonable surface use by the Department of Natural Resources, its Offices or Commissions, as herein above reserved.



NOTE: It appears, according to our records, that a portion of this Tract is located within the restrictive safety fairway area as set out by the Corps of Engineers, U.S. Army and/or the restrictive anchorage area as set out by the U.S. Coast Guard.

NOTE: This tract is located in an area designated by the Louisiana Legislature or the Wildlife and Fisheries Commission as a Public Oyster Seed Ground, Reservation, or area of Calcasieu or Sabine Lake. Proposed projects occurring in these areas will be evaluated on a case by case basis by Louisiana Department of Wildlife & Fisheries. Modifications to proposed project features including, but not limited to, access routes, well sites, flowlines, and appurtenant structures maybe required by the Louisiana Department of Wildlife and Fisheries. In addition, compensatory mitigation will be required to offset unavoidable habitat impacts.

Applicant: ROBERT A. SCHROEDER, INC.

Bidder	Cash Payment	Price/Acre	Rental	Oil	Gas	Other

Legend

-  13090027
-  Blocks
-  Active_Leases

