

**TRACT 43463 - Portion of Block 17, Breton Sound Area, and Block 16, Main Pass Area, Revised, Plaquemines Parish, Louisiana**

All of the lands now or formerly constituting the beds and bottoms of all water bodies of every nature and description as to which title is vested in the State of Louisiana, together with all islands arising therein and other lands formed by accretion or by reliction, where allowed by law, excepting tax adjudicated lands, and not presently under mineral lease on September 11, 2013, situated in Plaquemines Parish, Louisiana, and more particularly described as follows: Beginning at a point having Coordinates of X = 2,643,255.00 and Y = 351,830.00, said point being on the North line of Block 17, Breton Sound Area; thence South 7,379.00 feet to a point having Coordinates of X = 2,643,255.00 and Y = 344,451.00; thence West 13,258.00 feet to a point having Coordinates of X = 2,629,997.00 and Y = 344,451.00, said point being in Block 16, Main Pass Area, Revised; thence North 7,379.00 feet to a point having Coordinates of X = 2,629,997.00 and Y = 351,830.00, said point being on the North line of Block 16, Main Pass Area, Revised; thence East 13,258.00 feet on and along said North line of said Block 16, Main Pass Area, Revised, and on and along said North line of said Block 17, Breton Sound Area to the point of beginning, containing approximately **2,245.89 acres**, all as more particularly outlined on a plat on file in the Office of Mineral Resources, Department of Natural Resources. All bearings, distances and coordinates are based on Louisiana Coordinate System of 1927, (North or South Zone), where applicable.

NOTE: The above description of the Tract nominated for lease has been provided and corrected, where required, exclusively by the nomination party. Any mineral lease selected from this Tract and awarded by the Louisiana State Mineral and Energy Board shall be without warranty of any kind, either express, implied, or statutory, including, but not limited to, the implied warranties of merchantability and fitness for a particular purpose. Should the mineral lease awarded by the Louisiana State Mineral and Energy Board be subsequently modified, cancelled or abrogated due to the existence of conflicting leases, operating agreements, private claims or other future obligations or conditions which may affect all or any portion of the leased Tract, it shall not relieve the Lessee of the obligation to pay any bonus due thereon to the Louisiana State Mineral and Energy Board, nor shall the Louisiana State Mineral and Energy Board be obligated to refund any consideration paid by the Lessor prior to such modification, cancellation, or abrogation, including, but not limited to, bonuses, rentals and royalties.

NOTE: The State of Louisiana does hereby reserve, and this lease shall be subject to, the imprescriptible right of surface use in the nature of a servitude in favor of the Department of Natural Resources, including its Offices and Commissions, for the sole purpose of implementing, constructing, servicing and maintaining approved coastal zone management and/or restoration projects. Utilization of any and all rights derived under this lease by the mineral lessee, its agents, successors or assigns, shall not interfere with nor hinder the reasonable surface use by the

Department of Natural Resources, its Offices or Commissions, as herein above reserved.

NOTE: It appears, according to our records, that a portion of this Tract is located within the restrictive safety fairway area as set out by the Corps of Engineers, U.S. Army and/or the restrictive anchorage area as set out by the U.S. Coast Guard.

NOTE: This tract is located in an area designated by the Louisiana Legislature or the Wildlife and Fisheries Commission as a Public Oyster Seed Ground, Reservation, or area of Calcasieu or Sabine Lake. Proposed projects occurring in these areas will be evaluated on a case by case basis by Louisiana Department of Wildlife & Fisheries. Modifications to proposed project features including, but not limited to, access routes, well sites, flowlines, and appurtenant structures maybe required by the Louisiana Department of Wildlife and Fisheries. In addition, compensatory mitigation will be required to offset unavoidable habitat impacts.

Applicant: ROBERT A. SCHROEDER, INC.

Bidder	Cash Payment	Price/Acre	Rental	Oil	Gas	Other

**Legend**  
13090024  
Blocks



PLAQUEMINES PARISH

P.O.B.

BRETON SOUND AREA

BS0016

BS0017

MP0009

MP0016

GULF OF MEXICO

MAIN PASS AREA, REVISED

**TRACT 43464 - Portion of Blocks 17, and 18, Breton Sound Area, Plaquemines Parish, Louisiana**

All of the lands now or formerly constituting the beds and bottoms of all water bodies of every nature and description as to which title is vested in the State of Louisiana, together with all islands arising therein and other lands formed by accretion or by reliction, where allowed by law, excepting tax adjudicated lands, and not presently under mineral lease on September 11, 2013, situated in Plaquemines Parish, Louisiana, and more particularly described as follows: Beginning at a point having Coordinates of X = 2,643,255.00 and Y = 351,830.00, said point being on the North line of Block 17, Breton Sound Area; thence East 13,826.00 feet on and along said North line of said Block 17, Breton Sound Area, and on and along the North line of Block 18, Breton Sound Area, to a point having Coordinates of X = 2,657,081.00 and Y = 351,830.00; thence South 7,379.00 feet to a point having Coordinates of X = 2,657,081.00 and Y = 344,451.00; thence West 13,826.00 feet to a point having Coordinates of X = 2,643,255.00 and Y = 344,451.00, said point being in Block 17, Breton Sound Area; thence North 7,379.00 feet to the point of beginning, containing approximately **2,342.10 acres**, all as more particularly outlined on a plat on file in the Office of Mineral Resources, Department of Natural Resources. All bearings, distances and coordinates are based on Louisiana Coordinate System of 1927, (North or South Zone), where applicable.

NOTE: The above description of the Tract nominated for lease has been provided and corrected, where required, exclusively by the nomination party. Any mineral lease selected from this Tract and awarded by the Louisiana State Mineral and Energy Board shall be without warranty of any kind, either express, implied, or statutory, including, but not limited to, the implied warranties of merchantability and fitness for a particular purpose. Should the mineral lease awarded by the Louisiana State Mineral and Energy Board be subsequently modified, cancelled or abrogated due to the existence of conflicting leases, operating agreements, private claims or other future obligations or conditions which may affect all or any portion of the leased Tract, it shall not relieve the Lessee of the obligation to pay any bonus due thereon to the Louisiana State Mineral and Energy Board, nor shall the Louisiana State Mineral and Energy Board be obligated to refund any consideration paid by the Lessor prior to such modification, cancellation, or abrogation, including, but not limited to, bonuses, rentals and royalties.

NOTE: The State of Louisiana does hereby reserve, and this lease shall be subject to, the imprescriptible right of surface use in the nature of a servitude in favor of the Department of Natural Resources, including its Offices and Commissions, for the sole purpose of implementing, constructing, servicing and maintaining approved coastal zone management and/or restoration projects. Utilization of any and all rights derived under this lease by the mineral lessee, its agents, successors or assigns, shall not interfere with nor hinder the reasonable surface use by the

Department of Natural Resources, its Offices or Commissions, as herein above reserved.


NOTE: It appears, according to our records, that a portion of this Tract is located within the restrictive safety fairway area as set out by the Corps of Engineers, U.S. Army and/or the restrictive anchorage area as set out by the U.S. Coast Guard.

NOTE: This tract is located in an area designated by the Louisiana Legislature or the Wildlife and Fisheries Commission as a Public Oyster Seed Ground, Reservation, or area of Calcasieu or Sabine Lake. Proposed projects occurring in these areas will be evaluated on a case by case basis by Louisiana Department of Wildlife & Fisheries. Modifications to proposed project features including, but not limited to, access routes, well sites, flowlines, and appurtenant structures maybe required by the Louisiana Department of Wildlife and Fisheries. In addition, compensatory mitigation will be required to offset unavoidable habitat impacts.

Applicant: ROBERT A. SCHROEDER, INC.

Bidder	Cash Payment	Price/Acre	Rental	Oil	Gas	Other

**Legend**  
13090025  
Blocks



GULF OF MEXICO

PLAQUEMINES PARISH

BS0015

BS0018

BS0016

BS0017

BRETON SOUND AREA

P.O.B.



**TRACT 43465 - Portion of Blocks 17, and 18, Breton Sound Area, Plaquemines Parish, Louisiana**

All of the lands now or formerly constituting the beds and bottoms of all water bodies of every nature and description as to which title is vested in the State of Louisiana, together with all islands arising therein and other lands formed by accretion or by reliction, where allowed by law, excepting tax adjudicated lands, and not presently under mineral lease on September 11, 2013, situated in Plaquemines Parish, Louisiana, and more particularly described as follows: Beginning at a point having Coordinates of X = 2,657,081.00 and Y = 337,080.00, said point being on the South line of Block 18, Breton Sound Area; thence West 6,981.00 feet on and along said South line of said Block 18, Breton Sound Area, to a point having Coordinates of X = 2,650,100.00 and Y = 337,080.00, said point being the Southwest corner of said Block 18, Breton Sound Area, said point also being the Southeast corner of Block 17, Breton Sound Area; thence West 6,845.00 feet on and along the South line of said Block 17, Breton Sound Area, to a point having Coordinates of X = 2,643,255.00 and Y = 337,080.00; thence North 7,371.00 feet to a point having Coordinates of X = 2,643,255.00 and Y = 344,451.00; thence East 13,826.00 feet to a point having Coordinates of X = 2,657,081.00 and Y = 344,451.00; thence South 7,371.00 feet to the point of beginning, containing approximately **2,339.56 acres**, all as more particularly outlined on a plat on file in the Office of Mineral Resources, Department of Natural Resources. All bearings, distances and coordinates are based on Louisiana Coordinate System of 1927, (North or South Zone), where applicable.

NOTE: The above description of the Tract nominated for lease has been provided and corrected, where required, exclusively by the nomination party. Any mineral lease selected from this Tract and awarded by the Louisiana State Mineral and Energy Board shall be without warranty of any kind, either express, implied, or statutory, including, but not limited to, the implied warranties of merchantability and fitness for a particular purpose. Should the mineral lease awarded by the Louisiana State Mineral and Energy Board be subsequently modified, cancelled or abrogated due to the existence of conflicting leases, operating agreements, private claims or other future obligations or conditions which may affect all or any portion of the leased Tract, it shall not relieve the Lessee of the obligation to pay any bonus due thereon to the Louisiana State Mineral and Energy Board, nor shall the Louisiana State Mineral and Energy Board be obligated to refund any consideration paid by the Lessor prior to such modification, cancellation, or abrogation, including, but not limited to, bonuses, rentals and royalties.

NOTE: The State of Louisiana does hereby reserve, and this lease shall be subject to, the imprescriptible right of surface use in the nature of a servitude in favor of the Department of Natural Resources, including its Offices and Commissions, for the sole purpose of implementing, constructing, servicing and maintaining approved coastal zone management and/or restoration projects. Utilization of any and all rights derived

under this lease by the mineral lessee, its agents, successors or assigns, shall not interfere with nor hinder the reasonable surface use by the Department of Natural Resources, its Offices or Commissions, as herein above reserved.

NOTE: It appears, according to our records, that a portion of this Tract is located within the restrictive safety fairway area as set out by the Corps of Engineers, U.S. Army and/or the restrictive anchorage area as set out by the U.S. Coast Guard.

NOTE: This tract is located in an area designated by the Louisiana Legislature or the Wildlife and Fisheries Commission as a Public Oyster Seed Ground, Reservation, or area of Calcasieu or Sabine Lake. Proposed projects occurring in these areas will be evaluated on a case by case basis by Louisiana Department of Wildlife & Fisheries. Modifications to proposed project features including, but not limited to, access routes, well sites, flowlines, and appurtenant structures maybe required by the Louisiana Department of Wildlife and Fisheries. In addition, compensatory mitigation will be required to offset unavoidable habitat impacts.

Applicant: ROBERT A. SCHROEDER, INC.

Bidder	Cash Payment	Price/Acre	Rental	Oil	Gas	Other



**Legend**  
13090028  
Blocks

PLAQUEMINES PARISH

GULF OF MEXICO

BS0018

BS0017

P.O.B.

BRETON SOUND AREA

0 2,000 Feet

**TRACT 43466 - Portion of Blocks 17, and 32, Breton Sound Area, and Block 16, Main Pass Area, Revised, Plaquemines Parish, Louisiana**

All of the lands now or formerly constituting the beds and bottoms of all water bodies of every nature and description as to which title is vested in the State of Louisiana, together with all islands arising therein and other lands formed by accretion or by reliction, where allowed by law, excepting tax adjudicated lands, and not presently under mineral lease on September 11, 2013, situated in Plaquemines Parish, Louisiana, and more particularly described as follows: Beginning at a point having Coordinates of X = 2,635,960.00 and Y = 334,080.00, said point being on the Northern boundary of State Lease No. 1227, as amended, said point also being the Southeast corner of State Lease No. 20966; thence on and along the Eastern and Northern boundaries of said State Lease No. 20966 the following courses and distances, to wit: North 3,000.00 feet a point having Coordinates of X = 2,635,960.00 and Y = 337,080.00, said point being on the line common to Block 17 and 32, Breton Sound Area; North 1,460.00 feet a point having Coordinates of X = 2,635,960.00 and Y = 338,540.00; North 50 degrees 14 minutes 00 seconds West 1391.36 feet to a point having Coordinates of X = 2,634,890.52 and Y = 339,430.00; and West 4,893.52 feet a point having Coordinates of X = 2,629,997.00 and Y = 339,430.00; thence North 5,021.00 feet to a point having Coordinates of X = 2,629,997.00 and Y = 344,451.00; thence East 13,258.00 feet to a point having Coordinates of X = 2,643,255.00 and Y = 344,451.00, said point being in Block 17, Breton Sound Area; thence South 7,371.00 feet to a point having Coordinates of X = 2,643,255.00 and Y = 337,080.00, said point being on the line common to Blocks 17 and 32, Breton Sound Area; thence South 4,197.74 feet to a point having Coordinates of X = 2,643,255.00 and Y = 332,882.26, said point being on said Northern boundary of said State Lease No. 1227, as amended; thence on and along said Northern boundary of said State Lease No. 1227, as amended, the following courses and distances, to wit: Westerly on a curve to the left having a radius of 33,940.00 feet an arc length of 4,087.03 feet to a point having Coordinates of X = 2,639,350.00 and Y = 334,080.00; West 3,390.00 feet to the point of beginning, containing approximately **2,484.93 acres**, all as more particularly outlined on a plat on file in the Office of Mineral Resources, Department of Natural Resources. All bearings, distances and coordinates are based on Louisiana Coordinate System of 1927, (North or South Zone), where applicable.

NOTE: The above description of the Tract nominated for lease has been provided and corrected, where required, exclusively by the nomination party. Any mineral lease selected from this Tract and awarded by the Louisiana State Mineral and Energy Board shall be without warranty of any kind, either express, implied, or statutory, including, but not limited to, the implied warranties of merchantability and fitness for a particular purpose. Should the mineral lease awarded by the Louisiana State Mineral and Energy Board be subsequently modified, cancelled or abrogated due to the existence of conflicting leases, operating agreements, private claims or other future obligations or conditions which may affect all or any

portion of the leased Tract, it shall not relieve the Lessee of the obligation to pay any bonus due thereon to the Louisiana State Mineral and Energy Board, nor shall the Louisiana State Mineral and Energy Board be obligated to refund any consideration paid by the Lessor prior to such modification, cancellation, or abrogation, including, but not limited to, bonuses, rentals and royalties.

NOTE: The State of Louisiana does hereby reserve, and this lease shall be subject to, the imprescriptible right of surface use in the nature of a servitude in favor of the Department of Natural Resources, including its Offices and Commissions, for the sole purpose of implementing, constructing, servicing and maintaining approved coastal zone management and/or restoration projects. Utilization of any and all rights derived under this lease by the mineral lessee, its agents, successors or assigns, shall not interfere with nor hinder the reasonable surface use by the Department of Natural Resources, its Offices or Commissions, as herein above reserved.

NOTE: This tract is located in an area designated by the Louisiana Legislature or the Wildlife and Fisheries Commission as a Public Oyster Seed Ground, Reservation, or area of Calcasieu or Sabine Lake. Proposed projects occurring in these areas will be evaluated on a case by case basis by Louisiana Department of Wildlife & Fisheries. Modifications to proposed project features including, but not limited to, access routes, well sites, flowlines, and appurtenant structures maybe required by the Louisiana Department of Wildlife and Fisheries. In addition, compensatory mitigation will be required to offset unavoidable habitat impacts.

Applicant: ROBERT A. SCHROEDER, INC.

Bidder	Cash Payment	Price/Acre	Rental	Oil	Gas	Other

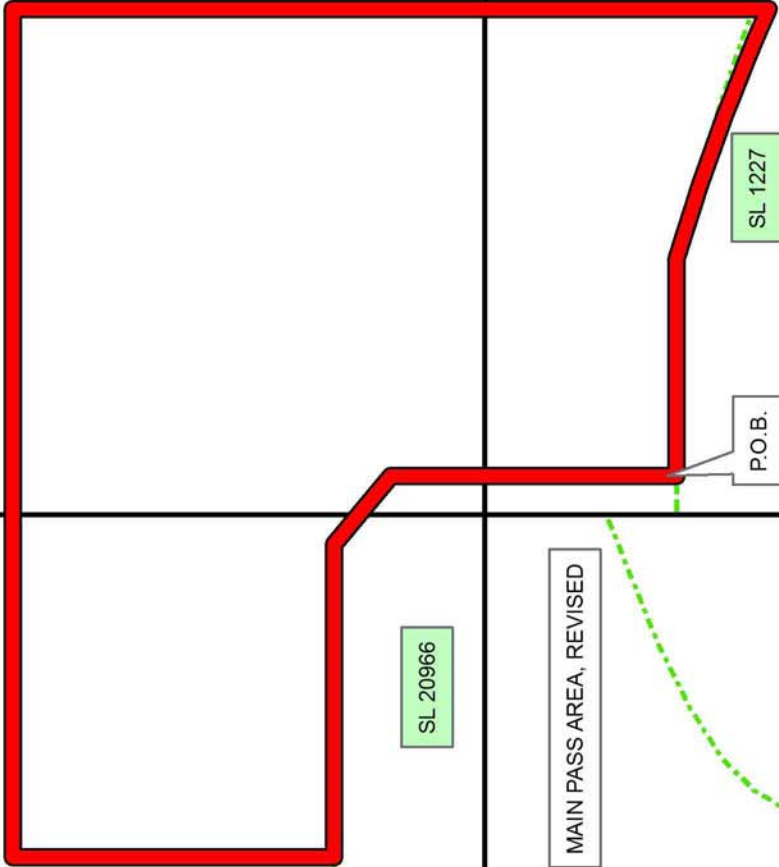
**Legend**

- 13090029
- Blocks
- Active\_Leases



PLAQUEMINES PARISH  
 BS00017  
 GULF OF MEXICO

MP00016



BRETON SOUND AREA

BS00032

MAIN PASS AREA, REVISED

MP00021

**TRACT 43467 - Portion of Block 30, Breton Sound Area, Plaquemines Parish, Louisiana**

All of the lands now or formerly constituting the beds and bottoms of all water bodies of every nature and description as to which title is vested in the State of Louisiana, together with all islands arising therein and other lands formed by accretion or by reliction, where allowed by law, excepting tax adjudicated lands, and not presently under mineral lease on September 11, 2013, situated in Plaquemines Parish, Louisiana, and more particularly described as follows: Beginning at a point having Coordinates of X = 2,664,850.00 and Y = 337,080.00, said point being the Northwest corner of Block 30, Breton Sound Area; thence East 9,350.00 feet on and along the North line of said Block 30, Breton Sound Area, to a point having Coordinates of X = 2,674,200.00 and Y = 337,080.00; thence South 10,750.00 feet to a point having Coordinates of X = 2,674,200.00 and Y = 326,330.00; thence West 9,350.00 feet to a point having Coordinates of X = 2,664,850.00 and Y = 326,330.00, said point being on the West line of said Block 30, Breton Sound Area; thence North 10,750.00 feet on and along said West line of said Block 30, Breton Sound Area, to the point of beginning, containing approximately **2,307.45 acres**, all as more particularly outlined on a plat on file in the Office of Mineral Resources, Department of Natural Resources. All bearings, distances and coordinates are based on Louisiana Coordinate System of 1927, (North or South Zone), where applicable.

NOTE: The above description of the Tract nominated for lease has been provided and corrected, where required, exclusively by the nomination party. Any mineral lease selected from this Tract and awarded by the Louisiana State Mineral and Energy Board shall be without warranty of any kind, either express, implied, or statutory, including, but not limited to, the implied warranties of merchantability and fitness for a particular purpose. Should the mineral lease awarded by the Louisiana State Mineral and Energy Board be subsequently modified, cancelled or abrogated due to the existence of conflicting leases, operating agreements, private claims or other future obligations or conditions which may affect all or any portion of the leased Tract, it shall not relieve the Lessee of the obligation to pay any bonus due thereon to the Louisiana State Mineral and Energy Board, nor shall the Louisiana State Mineral and Energy Board be obligated to refund any consideration paid by the Lessor prior to such modification, cancellation, or abrogation, including, but not limited to, bonuses, rentals and royalties.

NOTE: The State of Louisiana does hereby reserve, and this lease shall be subject to, the imprescriptible right of surface use in the nature of a servitude in favor of the Department of Natural Resources, including its Offices and Commissions, for the sole purpose of implementing, constructing, servicing and maintaining approved coastal zone management and/or restoration projects. Utilization of any and all rights derived under this lease by the mineral lessee, its agents, successors or assigns, shall not interfere with nor hinder the reasonable surface use by the

Department of Natural Resources, its Offices or Commissions, as herein above reserved.

NOTE: It appears, according to our records, that a portion of this Tract is located within the restrictive safety fairway area as set out by the Corps of Engineers, U.S. Army and/or the restrictive anchorage area as set out by the U.S. Coast Guard.

NOTE: This tract is located in an area designated by the Louisiana Legislature or the Wildlife and Fisheries Commission as a Public Oyster Seed Ground, Reservation, or area of Calcasieu or Sabine Lake. Proposed projects occurring in these areas will be evaluated on a case by case basis by Louisiana Department of Wildlife & Fisheries. Modifications to proposed project features including, but not limited to, access routes, well sites, flowlines, and appurtenant structures maybe required by the Louisiana Department of Wildlife and Fisheries. In addition, compensatory mitigation will be required to offset unavoidable habitat impacts.

Applicant: ROBERT A. SCHROEDER, INC.

Bidder	Cash Payment	Price/Acre	Rental	Oil	Gas	Other

**Legend**

13090032  
Blocks

PLAQUEMINES PARISH

BS0019

BS0030

BS0035

P.O.B.

GULF OF MEXICO

BS0031

BRETON SOUND AREA

0 2,000 Feet

**TRACT 43468 - Portion of Blocks 31, and 32, Breton Sound Area, Plaquemines Parish, Louisiana**

All of the lands now or formerly constituting the beds and bottoms of all water bodies of every nature and description as to which title is vested in the State of Louisiana, together with all islands arising therein and other lands formed by accretion or by reliction, where allowed by law, excepting tax adjudicated lands, and not presently under mineral lease on September 11, 2013, situated in Plaquemines Parish, Louisiana, and more particularly described as follows: Beginning at a point having Coordinates of X = 2,657,081.00 and Y = 337,080.00, said point being on the North line of Block 31, Breton Sound Area; thence South 7,375.00 feet to a point having Coordinates of X = 2,657,081.00 and Y = 329,705.00; thence West 6,981.00 feet to a point having Coordinates of X = 2,650,100.00 and Y = 329,705.00, said point being on the line common to Blocks 31 and 32, Breton Sound Area; thence South 3,375.00 feet on and along said line common to Blocks 31 and 32, Breton Sound Area, to a point having Coordinates of X = 2,650,100.00 and Y = 326,330.00, said point being the Northwest corner of State Lease No. 4407, as amended; thence West 3,500.00 feet to a point having Coordinates of X = 2,646,600.00 and Y = 326,330.00, said point being on the Eastern boundary of State Lease No. 1227, as amended; thence on and along the Eastern and Northern boundaries of said State Lease No. 1227, as amended, the following courses and distances, to wit: North 5,092.00 feet to a point having Coordinates of X = 2,646,600.00 and Y = 331,422.00, said point being the Northeast corner of said State Lease No. 1227, as amended; and Westerly on a curve to the left having a radius of 33,940.00 feet an arc length of 3,651.61 feet to a point having Coordinates of X = 2,643,255.00 and Y = 332,882.26; thence North 4,197.74 feet to a point having Coordinates of X = 2,643,255.00 and Y = 337,080.00, said point being on the North line of Block 32, Breton Sound Area; thence East 13,826.00 feet on and along said North line of said of Block 32, Breton Sound Area, and on and along said North line of said of Block 31, Breton Sound Area, to the point of beginning, containing approximately **2,421.35 acres**, all as more particularly outlined on a plat on file in the Office of Mineral Resources, Department of Natural Resources. All bearings, distances and coordinates are based on Louisiana Coordinate System of 1927, (North or South Zone), where applicable.

NOTE: The above description of the Tract nominated for lease has been provided and corrected, where required, exclusively by the nomination party. Any mineral lease selected from this Tract and awarded by the Louisiana State Mineral and Energy Board shall be without warranty of any kind, either express, implied, or statutory, including, but not limited to, the implied warranties of merchantability and fitness for a particular purpose. Should the mineral lease awarded by the Louisiana State Mineral and Energy Board be subsequently modified, cancelled or abrogated due to the existence of conflicting leases, operating agreements, private claims or other future obligations or conditions which may affect all or any portion of the leased Tract, it shall not relieve the Lessee of the obligation to pay any bonus due thereon to the Louisiana State Mineral and



Energy Board, nor shall the Louisiana State Mineral and Energy Board be obligated to refund any consideration paid by the Lessor prior to such modification, cancellation, or abrogation, including, but not limited to, bonuses, rentals and royalties.

NOTE: The State of Louisiana does hereby reserve, and this lease shall be subject to, the imprescriptible right of surface use in the nature of a servitude in favor of the Department of Natural Resources, including its Offices and Commissions, for the sole purpose of implementing, constructing, servicing and maintaining approved coastal zone management and/or restoration projects. Utilization of any and all rights derived under this lease by the mineral lessee, its agents, successors or assigns, shall not interfere with nor hinder the reasonable surface use by the Department of Natural Resources, its Offices or Commissions, as herein above reserved.

NOTE: It appears, according to our records, that a portion of this Tract is located within the restrictive safety fairway area as set out by the Corps of Engineers, U.S. Army and/or the restrictive anchorage area as set out by the U.S. Coast Guard.

NOTE: This tract is located in an area designated by the Louisiana Legislature or the Wildlife and Fisheries Commission as a Public Oyster Seed Ground, Reservation, or area of Calcasieu or Sabine Lake. Proposed projects occurring in these areas will be evaluated on a case by case basis by Louisiana Department of Wildlife & Fisheries. Modifications to proposed project features including, but not limited to, access routes, well sites, flowlines, and appurtenant structures maybe required by the Louisiana Department of Wildlife and Fisheries. In addition, compensatory mitigation will be required to offset unavoidable habitat impacts.

Applicant: ROBERT A. SCHROEDER, INC.

Bidder	Cash Payment	Price/Acre	Rental	Oil	Gas	Other

**Legend**

- 13090030
- Blocks
- Active\_Leases



PLAQUEMINES PARISH

BS0018

BS0017

P.O.B.

BS0031

GULF OF MEXICO

BS0032

BRETON SOUND AREA

SL 1227

SL 4407

**TRACT 43469 - Portion of Block 31, Breton Sound Area, Plaquemines Parish, Louisiana**

All of the lands now or formerly constituting the beds and bottoms of all water bodies of every nature and description as to which title is vested in the State of Louisiana, together with all islands arising therein and other lands formed by accretion or by reliction, where allowed by law, excepting tax adjudicated lands, and not presently under mineral lease on September 11, 2013, situated in Plaquemines Parish, Louisiana, and more particularly described as follows: Beginning at a point having Coordinates of X = 2,664,850.00 and Y = 337,080.00, said point being the Northeast corner of Block 31, Breton Sound Area; thence South 10,750.00 feet on and along the East line of said Block 31, Breton Sound Area, to a point having Coordinates of X = 2,664,850.00 and Y = 326,330.00; thence West 3,375.00 feet to a point having Coordinates of X = 2,661,475.00 and Y = 326,330.00, said point being the Northeast corner of State Lease No. 4865; thence West 4,000.00 feet on and along the Northern boundary of said State Lease No. 4865 to a point having Coordinates of X = 2,657,475.00 and Y = 326,330.00, said point being the Northwest corner of said State Lease No. 4865, said point also being the Northeast corner of State Lease No. 4407, as amended; thence West 7,375.00 feet on and along the Northern boundary of said State Lease No. 4407, as amended, to a point having Coordinates of X = 2,650,100.00 and Y = 326,330.00, said point being the Northwest corner of said State Lease No. 4407, as amended, said point also being on the West line of said Block 31, Breton Sound Area; thence North 3,375.00 feet on and along said West line of said Block 31, Breton Sound Area, to a point having Coordinates of X = 2,650,100.00 and Y = 329,705.00; thence East 6,981.00 feet to a point having Coordinates of X = 2,657,081.00 and Y = 329,705.00; thence North 7,375.00 feet to a point having Coordinates of X = 2,657,081.00 and Y = 337,080.00, said point being on the North line of said Block 31, Breton Sound Area; thence East 7,769.00 feet on and along said North line of said Block 31, Breton Sound Area, to the point of beginning, containing approximately **2,458.16 acres**, all as more particularly outlined on a plat on file in the Office of Mineral Resources, Department of Natural Resources. All bearings, distances and coordinates are based on Louisiana Coordinate System of 1927, (North or South Zone), where applicable.

NOTE: The above description of the Tract nominated for lease has been provided and corrected, where required, exclusively by the nomination party. Any mineral lease selected from this Tract and awarded by the Louisiana State Mineral and Energy Board shall be without warranty of any kind, either express, implied, or statutory, including, but not limited to, the implied warranties of merchantability and fitness for a particular purpose. Should the mineral lease awarded by the Louisiana State Mineral and Energy Board be subsequently modified, cancelled or abrogated due to the existence of conflicting leases, operating agreements, private claims or other future obligations or conditions which may affect all or any portion of the leased Tract, it shall not relieve the Lessee of the obligation to pay any bonus due thereon to the Louisiana State Mineral and

Energy Board, nor shall the Louisiana State Mineral and Energy Board be obligated to refund any consideration paid by the Lessor prior to such modification, cancellation, or abrogation, including, but not limited to, bonuses, rentals and royalties.

NOTE: The State of Louisiana does hereby reserve, and this lease shall be subject to, the imprescriptible right of surface use in the nature of a servitude in favor of the Department of Natural Resources, including its Offices and Commissions, for the sole purpose of implementing, constructing, servicing and maintaining approved coastal zone management and/or restoration projects. Utilization of any and all rights derived under this lease by the mineral lessee, its agents, successors or assigns, shall not interfere with nor hinder the reasonable surface use by the Department of Natural Resources, its Offices or Commissions, as herein above reserved.

NOTE: It appears, according to our records, that a portion of this Tract is located within the restrictive safety fairway area as set out by the Corps of Engineers, U.S. Army and/or the restrictive anchorage area as set out by the U.S. Coast Guard.

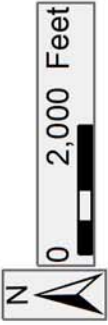
NOTE: This tract is located in an area designated by the Louisiana Legislature or the Wildlife and Fisheries Commission as a Public Oyster Seed Ground, Reservation, or area of Calcasieu or Sabine Lake. Proposed projects occurring in these areas will be evaluated on a case by case basis by Louisiana Department of Wildlife & Fisheries. Modifications to proposed project features including, but not limited to, access routes, well sites, flowlines, and appurtenant structures maybe required by the Louisiana Department of Wildlife and Fisheries. In addition, compensatory mitigation will be required to offset unavoidable habitat impacts.

Applicant: ROBERT A. SCHROEDER, INC.

Bidder	Cash Payment	Price/Acre	Rental	Oil	Gas	Other

**Legend**

- 13090031
- Blocks
- Active\_Leases



PLAQUEMINES PARISH

GULF OF MEXICO

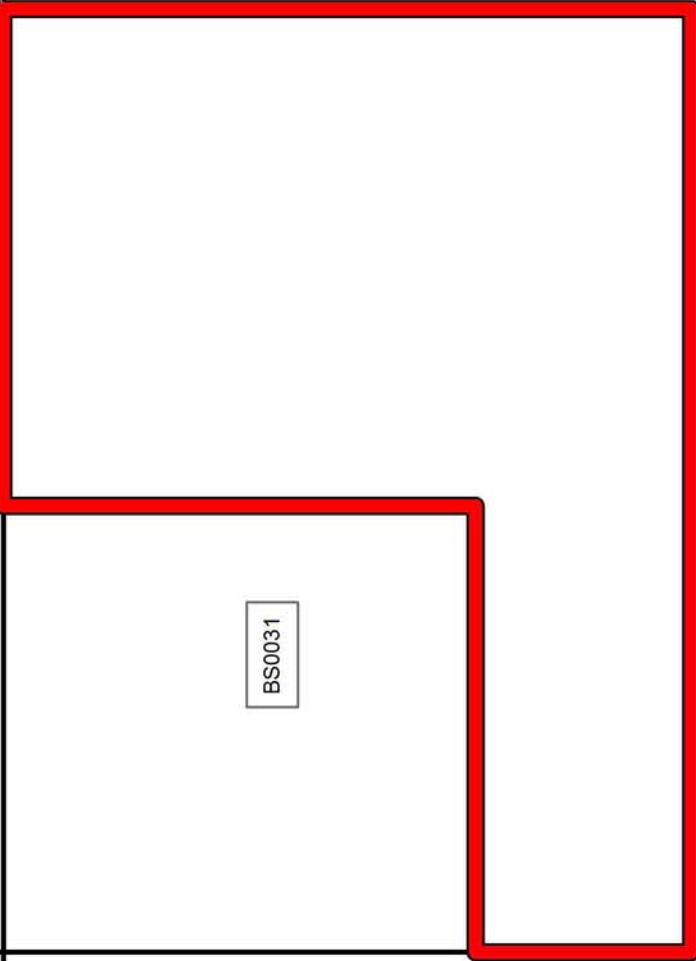
BS0018

P.O.B.

BS0030

BRETON SOUND AREA

BS0035



BS0031

SL 4865

SL 4407

BS0034

**TRACT 43470 - Jefferson and Lafourche Parishes, Louisiana**

All of the lands now or formerly constituting the beds and bottoms of all water bodies of every nature and description as to which title is vested in the State of Louisiana, together with all islands arising therein and other lands formed by accretion or by reliction, where allowed by law, excepting tax adjudicated lands, and not presently under mineral lease on September 11, 2013, situated in Jefferson and Lafourche Parishes, Louisiana, and more particularly described as follows: Beginning at a point having Coordinates of X = 2,358,500.00 and Y = 324,800.00; thence North 8,300.00 feet to a point having Coordinates of X = 2,358,500.00 and Y = 333,100.00; thence East approximately 4,216 feet to a point on the Western boundary of State Lease No. 2561, as amended; thence along the boundary of said State Lease No. 2561, as amended, the following courses: Southerly and Northeasterly to a point on the Western portion of State Lease No. 2381, as amended; thence along the boundary of the Western portion of said State Lease No. 2381, as amended, the following courses: Southeasterly and Northeasterly to a point on the Southern boundary of said State Lease No. 2561, as amended; thence Northeasterly on the Southern boundary of said State Lease No. 2561, as amended, to the Eastern portion of said State Lease No. 2381, as amended; thence along the boundary of the Eastern portion of said State Lease No. 2381, as amended, the following courses: Southeasterly, Southerly, Easterly, and Southeasterly to a point on the boundary of said State Lease No. 2561, as amended; thence along the boundary of said State Lease No. 2561, as amended, the following courses: Southerly and Easterly, to a point on the Northern boundary of State Lease No. 1972, as amended; thence along the boundary of said State Lease No. 1972, as amended, the following courses: Southwesterly, and Southeasterly to the point of intersection with an East West line having a Coordinate of Y = 324,800.00; thence West approximately 11,748 feet to the point of beginning, **LESS AND EXCEPT** that portion, if any, of State Lease No. 1972, as amended, State Lease No. 2381, as amended, and State Lease No. 2561, as amended, which may lie within the above described tract, containing approximately **1,251 acres**, all as more particularly outlined on a plat on file in the Office of Mineral Resources, Department of Natural Resources. All bearings, distances and coordinates are based on Louisiana Coordinate System of 1927, (North or South Zone), where applicable.

NOTE: The above description of the Tract nominated for lease has been provided and corrected, where required, exclusively by the nomination party. Any mineral lease selected from this Tract and awarded by the Louisiana State Mineral and Energy Board shall be without warranty of any kind, either express, implied, or statutory, including, but not limited to, the implied warranties of merchantability and fitness for a particular purpose. Should the mineral lease awarded by the Louisiana State Mineral and Energy Board be subsequently modified, cancelled or abrogated due to the existence of conflicting leases, operating agreements, private claims or other future obligations or conditions which may affect all or any portion of the leased Tract, it shall not relieve the Lessee of the

obligation to pay any bonus due thereon to the Louisiana State Mineral and Energy Board, nor shall the Louisiana State Mineral and Energy Board be obligated to refund any consideration paid by the Lessor prior to such modification, cancellation, or abrogation, including, but not limited to, bonuses, rentals and royalties.

NOTE: The State of Louisiana does hereby reserve, and this lease shall be subject to, the imprescriptible right of surface use in the nature of a servitude in favor of the Department of Natural Resources, including its Offices and Commissions, for the sole purpose of implementing, constructing, servicing and maintaining approved coastal zone management and/or restoration projects. Utilization of any and all rights derived under this lease by the mineral lessee, its agents, successors or assigns, shall not interfere with nor hinder the reasonable surface use by the Department of Natural Resources, its Offices or Commissions, as herein above reserved.

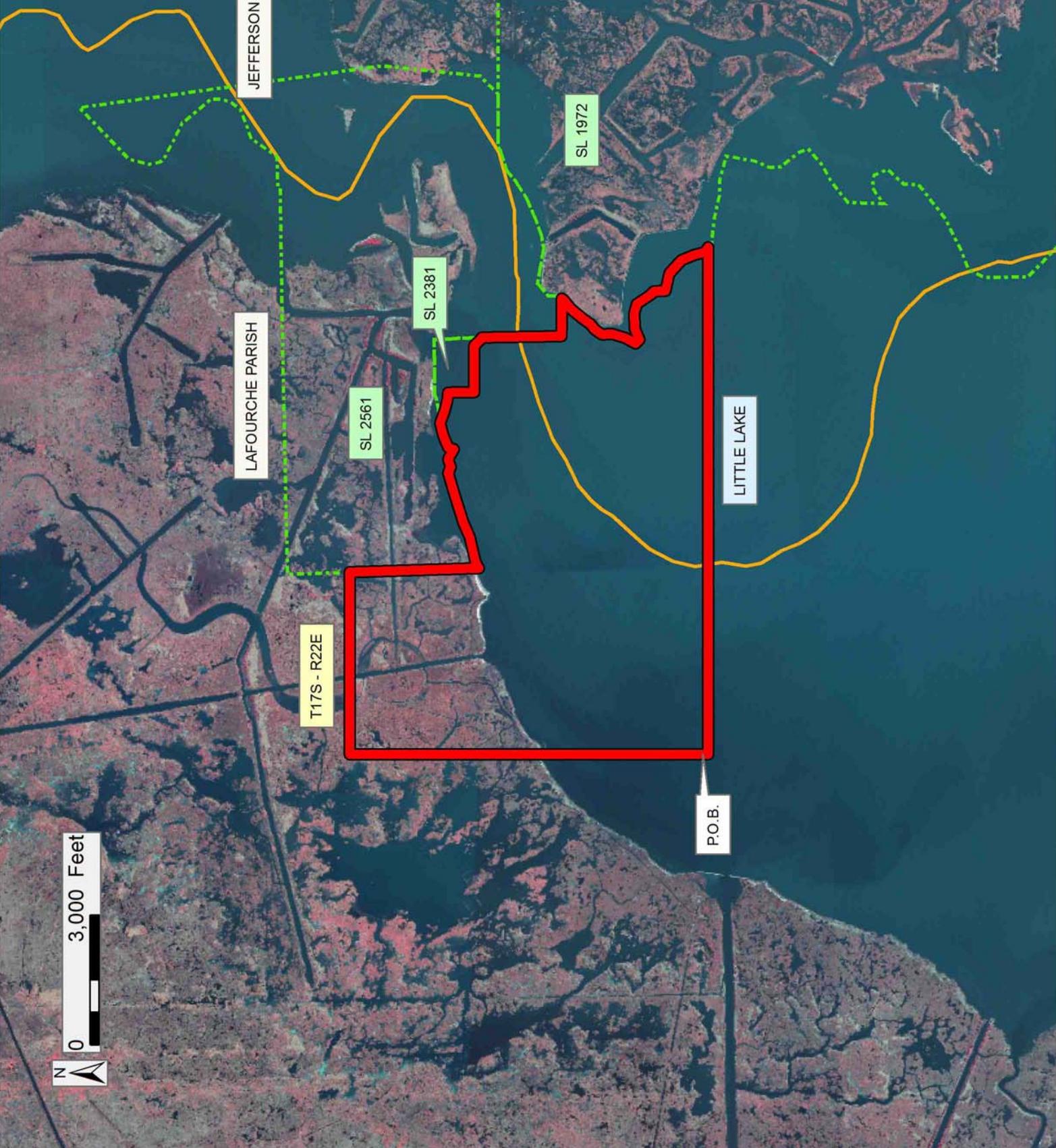
NOTE: This tract is located in an area designated by the Louisiana Legislature or the Wildlife and Fisheries Commission as a Public Oyster Seed Ground, Reservation, or area of Calcasieu or Sabine Lake. Proposed projects occurring in these areas will be evaluated on a case by case basis by Louisiana Department of Wildlife & Fisheries. Modifications to proposed project features including, but not limited to, access routes, well sites, flowlines, and appurtenant structures maybe required by the Louisiana Department of Wildlife and Fisheries. In addition, compensatory mitigation will be required to offset unavoidable habitat impacts.

Applicant: ROJO PESCADO ENERGY GROUP

Bidder	Cash Payment	Price/Acre	Rental	Oil	Gas	Other

**Legend**

- 13090022
- Active\_Leases
- Counties
- DOQQ2008





**TRACT 43471 - Jefferson and Lafourche Parishes, Louisiana**

All of the lands now or formerly constituting the beds and bottoms of all water bodies of every nature and description as to which title is vested in the State of Louisiana, together with all islands arising therein and other lands formed by accretion or by reliction, where allowed by law, excepting tax adjudicated lands, and not presently under mineral lease on September 11, 2013, situated in Jefferson and Lafourche Parishes, Louisiana, and more particularly described as follows: Beginning at a point having Coordinates of X = 2,358,500.00 and Y = 324,800.00; thence East approximately 11,748 feet to a point on the Western boundary of State Lease No. 1972, as amended; thence along the boundary of said State Lease No. 1972, as amended, the following courses: Southeasterly, Southwesterly, Northeasterly, Southeasterly, and Southwesterly to the point of intersection with an East West line having a Coordinate of Y = 317,600.00; thence West approximately 11,056 feet to a point having Coordinates of X = 2,358,500.00 and Y = 317,600.00; thence North 7,200.00 feet to the point of beginning, **LESS AND EXCEPT** that portion, if any, of State Lease No. 1972, as amended, which may lie within the above described tract, containing approximately **2,125 acres**, all as more particularly outlined on a plat on file in the Office of Mineral Resources, Department of Natural Resources. All bearings, distances and coordinates are based on Louisiana Coordinate System of 1927, (North or South Zone), where applicable.

NOTE: The above description of the Tract nominated for lease has been provided and corrected, where required, exclusively by the nomination party. Any mineral lease selected from this Tract and awarded by the Louisiana State Mineral and Energy Board shall be without warranty of any kind, either express, implied, or statutory, including, but not limited to, the implied warranties of merchantability and fitness for a particular purpose. Should the mineral lease awarded by the Louisiana State Mineral and Energy Board be subsequently modified, cancelled or abrogated due to the existence of conflicting leases, operating agreements, private claims or other future obligations or conditions which may affect all or any portion of the leased Tract, it shall not relieve the Lessee of the obligation to pay any bonus due thereon to the Louisiana State Mineral and Energy Board, nor shall the Louisiana State Mineral and Energy Board be obligated to refund any consideration paid by the Lessor prior to such modification, cancellation, or abrogation, including, but not limited to, bonuses, rentals and royalties.

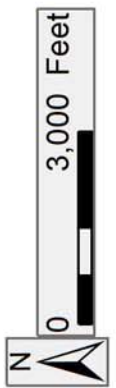
NOTE: The State of Louisiana does hereby reserve, and this lease shall be subject to, the imprescriptible right of surface use in the nature of a servitude in favor of the Department of Natural Resources, including its Offices and Commissions, for the sole purpose of implementing, constructing, servicing and maintaining approved coastal zone management and/or restoration projects. Utilization of any and all rights derived under this lease by the mineral lessee, its agents, successors or assigns, shall not interfere with nor hinder the reasonable surface use by the

Department of Natural Resources, its Offices or Commissions, as herein above reserved.

NOTE: This tract is located in an area designated by the Louisiana Legislature or the Wildlife and Fisheries Commission as a Public Oyster Seed Ground, Reservation, or area of Calcasieu or Sabine Lake. Proposed projects occurring in these areas will be evaluated on a case by case basis by Louisiana Department of Wildlife & Fisheries. Modifications to proposed project features including, but not limited to, access routes, well sites, flowlines, and appurtenant structures maybe required by the Louisiana Department of Wildlife and Fisheries. In addition, compensatory mitigation will be required to offset unavoidable habitat impacts.

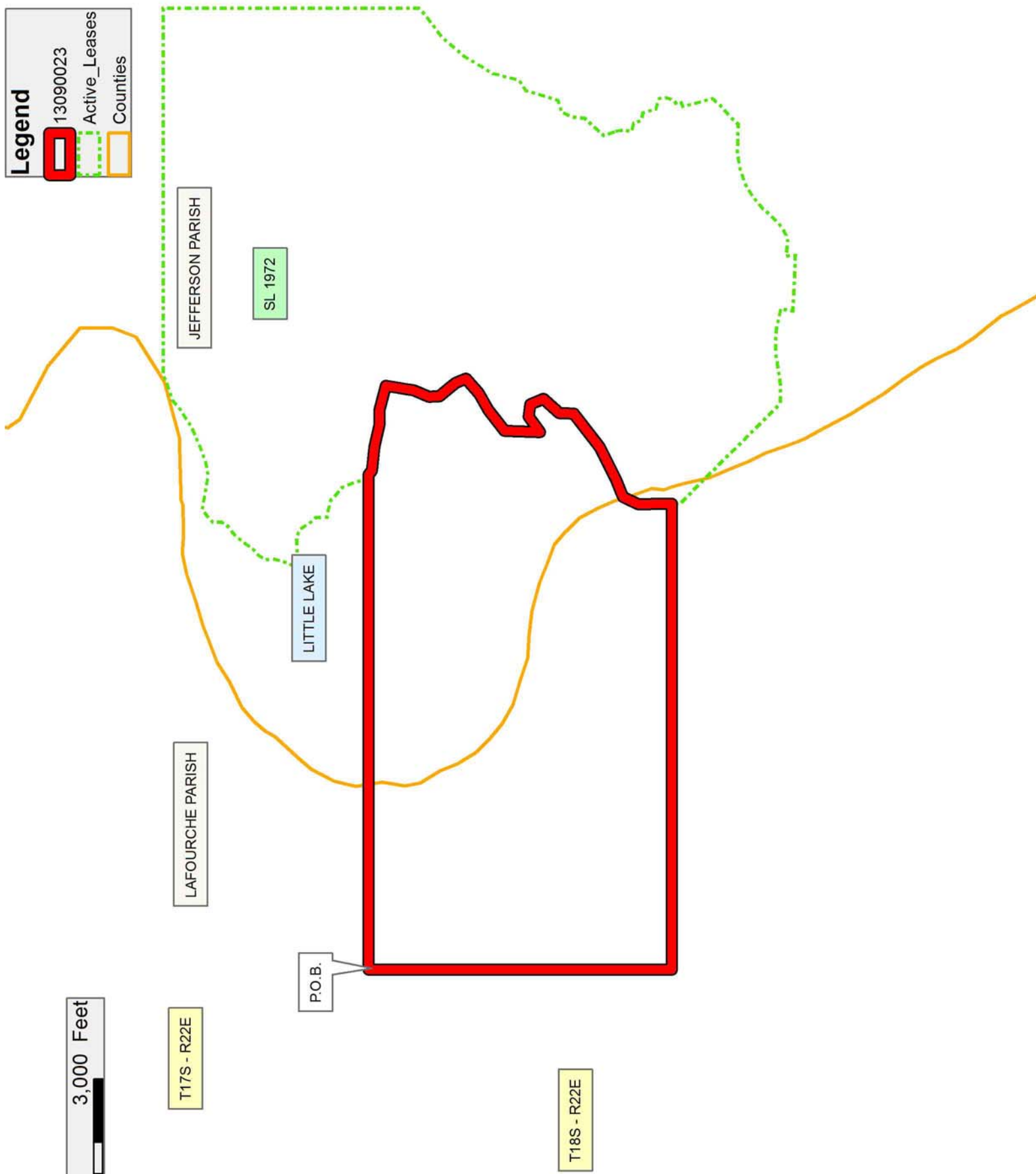
Applicant: ROJO PESCADO ENERGY GROUP

Bidder	Cash Payment	Price/Acre	Rental	Oil	Gas	Other



**Legend**

- 13090023
- Active\_Leases
- Counties



**TRACT 43472 - Jefferson and Lafourche Parishes, Louisiana**

All of the lands now or formerly constituting the beds and bottoms of all water bodies of every nature and description as to which title is vested in the State of Louisiana, together with all islands arising therein and other lands formed by accretion or by reliction, where allowed by law, excepting tax adjudicated lands, and not presently under mineral lease on September 11, 2013, situated in Jefferson and Lafourche Parishes, Louisiana, and more particularly described as follows: Beginning at a point having Coordinates of X = 2,358,500.00 and Y = 317,600.00; thence East approximately 11,056 feet to a point on the Western boundary of State Lease No. 1972, as amended; thence along the boundary of said State Lease No. 1972, as amended, the following courses: Southeasterly and Easterly to the point of intersection with a North South line having a Coordinate of X = 2,373,800.00; thence South approximately 5,203 feet to a point having Coordinates of X = 2,373,800.00 and Y = 309,900.00; thence West 15,300.00 feet to a point having Coordinates of X = 2,358,500.00 and Y = 309,900.00; thence North 7,700.00 feet to the point of beginning, **LESS AND EXCEPT** that portion, if any, of State Lease No. 1972, as amended, which may lie within the above described tract, containing approximately **2,426 acres**, all as more particularly outlined on a plat on file in the Office of Mineral Resources, Department of Natural Resources. All bearings, distances and coordinates are based on Louisiana Coordinate System of 1927, (North or South Zone), where applicable.

NOTE: The above description of the Tract nominated for lease has been provided and corrected, where required, exclusively by the nomination party. Any mineral lease selected from this Tract and awarded by the Louisiana State Mineral and Energy Board shall be without warranty of any kind, either express, implied, or statutory, including, but not limited to, the implied warranties of merchantability and fitness for a particular purpose. Should the mineral lease awarded by the Louisiana State Mineral and Energy Board be subsequently modified, cancelled or abrogated due to the existence of conflicting leases, operating agreements, private claims or other future obligations or conditions which may affect all or any portion of the leased Tract, it shall not relieve the Lessee of the obligation to pay any bonus due thereon to the Louisiana State Mineral and Energy Board, nor shall the Louisiana State Mineral and Energy Board be obligated to refund any consideration paid by the Lessor prior to such modification, cancellation, or abrogation, including, but not limited to, bonuses, rentals and royalties.

NOTE: The State of Louisiana does hereby reserve, and this lease shall be subject to, the imprescriptible right of surface use in the nature of a servitude in favor of the Department of Natural Resources, including its Offices and Commissions, for the sole purpose of implementing, constructing, servicing and maintaining approved coastal zone management and/or restoration projects. Utilization of any and all rights derived under this lease by the mineral lessee, its agents, successors or assigns, shall not interfere with nor hinder the reasonable surface use by the

Department of Natural Resources, its Offices or Commissions, as herein above reserved.

NOTE: This tract is located in an area designated by the Louisiana Legislature or the Wildlife and Fisheries Commission as a Public Oyster Seed Ground, Reservation, or area of Calcasieu or Sabine Lake. Proposed projects occurring in these areas will be evaluated on a case by case basis by Louisiana Department of Wildlife & Fisheries. Modifications to proposed project features including, but not limited to, access routes, well sites, flowlines, and appurtenant structures maybe required by the Louisiana Department of Wildlife and Fisheries. In addition, compensatory mitigation will be required to offset unavoidable habitat impacts.

Applicant: ROJO PESCADO ENERGY GROUP

Bidder	Cash Payment	Price/Acre	Rental	Oil	Gas	Other



13090021  
Active\_Lease:  
Counties  
DOQQ2008

SL 1972

JEFFERSON PARISH

T18S - R22E

LAFOURCHE PARISH

LITTLE LAKE

P.O.B.

0 3,000 Feet

