

**TRACT 43473 - Plaquemines Parish, Louisiana**

All of the lands now or formerly constituting the beds and bottoms of all water bodies of every nature and description as to which title is vested in the State of Louisiana, together with all islands arising therein and other lands formed by accretion or by reliction, where allowed by law, excepting tax adjudicated lands, and not presently under mineral lease on September 11, 2013, situated in Plaquemines Parish, Louisiana, and more particularly described as follows: Beginning at a point on the West boundary of State Lease No. 20806 and the East boundary of State Lease No. 18015 having Coordinates of X = 2,498,219.27 and Y = 253,973.96; thence North 02 degrees 15 minutes 47 seconds West 1,146.09 feet along the East boundary of said State Lease No. 18015 to its Northeast corner and a point on the South Line of Tract 3 of State Lease No. 1464, as amended having Coordinates of X = 2,498,174.02 and Y = 255,119.16; thence South 88 degrees 12 minutes 12 seconds East 53.75 feet along the South line of Tract 3 of said State Lease No. 1464 to the Northwest corner of said State Lease No. 20806 having Coordinates of X = 2,498,227.74 and Y = 255,117.47; thence along the boundaries of said State Lease No. 20806 the following courses: South 75 degrees 41 minutes 38 seconds East 657.43 feet to a point having Coordinates of X = 2,498,864.78 and Y = 254,955.02, South 24 degrees 24 minutes 06 seconds West 1,153.03 feet to a point having Coordinates of X = 2,498,388.43 and Y = 253,904.99 and North 67 degrees 49 minutes 00 seconds West 182.67 feet to the point of beginning, estimated to contain **0.974 acres**, all as more particularly outlined on a plat on file in the Office of Mineral Resources, Department of Natural Resources. All bearings, distances and coordinates are based on Louisiana Coordinate System of 1927, (North or South Zone), where applicable.

NOTE: The above description of the Tract nominated for lease has been provided and corrected, where required, exclusively by the nomination party. Any mineral lease selected from this Tract and awarded by the Louisiana State Mineral and Energy Board shall be without warranty of any kind, either express, implied, or statutory, including, but not limited to, the implied warranties of merchantability and fitness for a particular purpose. Should the mineral lease awarded by the Louisiana State Mineral and Energy Board be subsequently modified, cancelled or abrogated due to the existence of conflicting leases, operating agreements, private claims or other future obligations or conditions which may affect all or any portion of the leased Tract, it shall not relieve the Lessee of the obligation to pay any bonus due thereon to the Louisiana State Mineral and Energy Board, nor shall the Louisiana State Mineral and Energy Board be obligated to refund any consideration paid by the Lessor prior to such modification, cancellation, or abrogation, including, but not limited to, bonuses, rentals and royalties.

NOTE: The State of Louisiana does hereby reserve, and this lease shall be subject to, the imprescriptible right of surface use in the nature of a servitude in favor of the Department of Natural Resources, including its Offices and Commissions, for the sole purpose of implementing,

constructing, servicing and maintaining approved coastal zone management and/or restoration projects. Utilization of any and all rights derived under this lease by the mineral lessee, its agents, successors or assigns, shall not interfere with nor hinder the reasonable surface use by the Department of Natural Resources, its Offices or Commissions, as herein above reserved.

Applicant: MARK A. O'NEAL & ASSOCIATES, INC.

Bidder	Cash Payment	Price/Acre	Rental	Oil	Gas	Other

**Legend**

13090062



Claimable State Waterbottoms



Freeze Statute



Active\_Leases



DOQQ2008



PLAQUEMINES PARISH

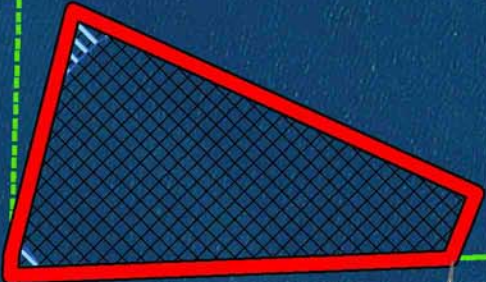
BILLET BAY

SL 1464

SL 20806

SL 18015

P.O.B.



**TRACT 43474 - Plaquemines Parish, Louisiana**

All of the lands now or formerly constituting the beds and bottoms of all water bodies of every nature and description as to which title is vested in the State of Louisiana, together with all islands arising therein and other lands formed by accretion or by reliction, where allowed by law, excepting tax adjudicated lands, and not presently under mineral lease on September 11, 2013, situated in Plaquemines Parish, Louisiana, and more particularly described as follows: Beginning at a point on the inner boundary of State Lease No. 20806 having Coordinates of X = 2,498,700.34 and Y = 250,580.00; thence along the boundaries of said State Lease No. 20806 the following courses: West 610.34 feet to a point having Coordinates of X = 2,498,090.00 and Y = 250,580.00, South 284.19 feet to a point having Coordinates of X = 2,498,090.00 and Y = 250,295.81, West 642.40 feet to a point having Coordinates of X = 2,497,447.60 and y = 250,295.81 and North approximately 1,023 feet to a point on the South boundary of that certain Agreement between Cockrell et al and the State of Louisiana, dated May 16, 1938, recorded in Book 88, Page 189, in Plaquemines Parish; thence Northerly approximately 642 feet and Easterly approximately 364 feet along the South boundary of said Agreement to point having a Coordinate of Y = 251,691.31; thence East approximately 616 feet to a point having Coordinates of X = 2,498,700.34 and Y = 251,691.31; thence South 1,111.31 feet to the point of beginning, containing approximately **6.816 acres**, all as more particularly outlined on a plat on file in the Office of Mineral Resources, Department of Natural Resources. All bearings, distances and coordinates are based on Louisiana Coordinate System of 1927, (North or South Zone), where applicable.

NOTE: The above description of the Tract nominated for lease has been provided and corrected, where required, exclusively by the nomination party. Any mineral lease selected from this Tract and awarded by the Louisiana State Mineral and Energy Board shall be without warranty of any kind, either express, implied, or statutory, including, but not limited to, the implied warranties of merchantability and fitness for a particular purpose. Should the mineral lease awarded by the Louisiana State Mineral and Energy Board be subsequently modified, cancelled or abrogated due to the existence of conflicting leases, operating agreements, private claims or other future obligations or conditions which may affect all or any portion of the leased Tract, it shall not relieve the Lessee of the obligation to pay any bonus due thereon to the Louisiana State Mineral and Energy Board, nor shall the Louisiana State Mineral and Energy Board be obligated to refund any consideration paid by the Lessor prior to such modification, cancellation, or abrogation, including, but not limited to, bonuses, rentals and royalties.

NOTE: The State of Louisiana does hereby reserve, and this lease shall be subject to, the imprescriptible right of surface use in the nature of a servitude in favor of the Department of Natural Resources, including its Offices and Commissions, for the sole purpose of implementing, constructing, servicing and maintaining approved coastal zone management

and/or restoration projects. Utilization of any and all rights derived under this lease by the mineral lessee, its agents, successors or assigns, shall not interfere with nor hinder the reasonable surface use by the Department of Natural Resources, its Offices or Commissions, as herein above reserved.

Applicant: MARK A. O'NEAL & ASSOCIATES, INC.

Bidder	Cash Payment	Price/Acre	Rental	Oil	Gas	Other



**Legend**

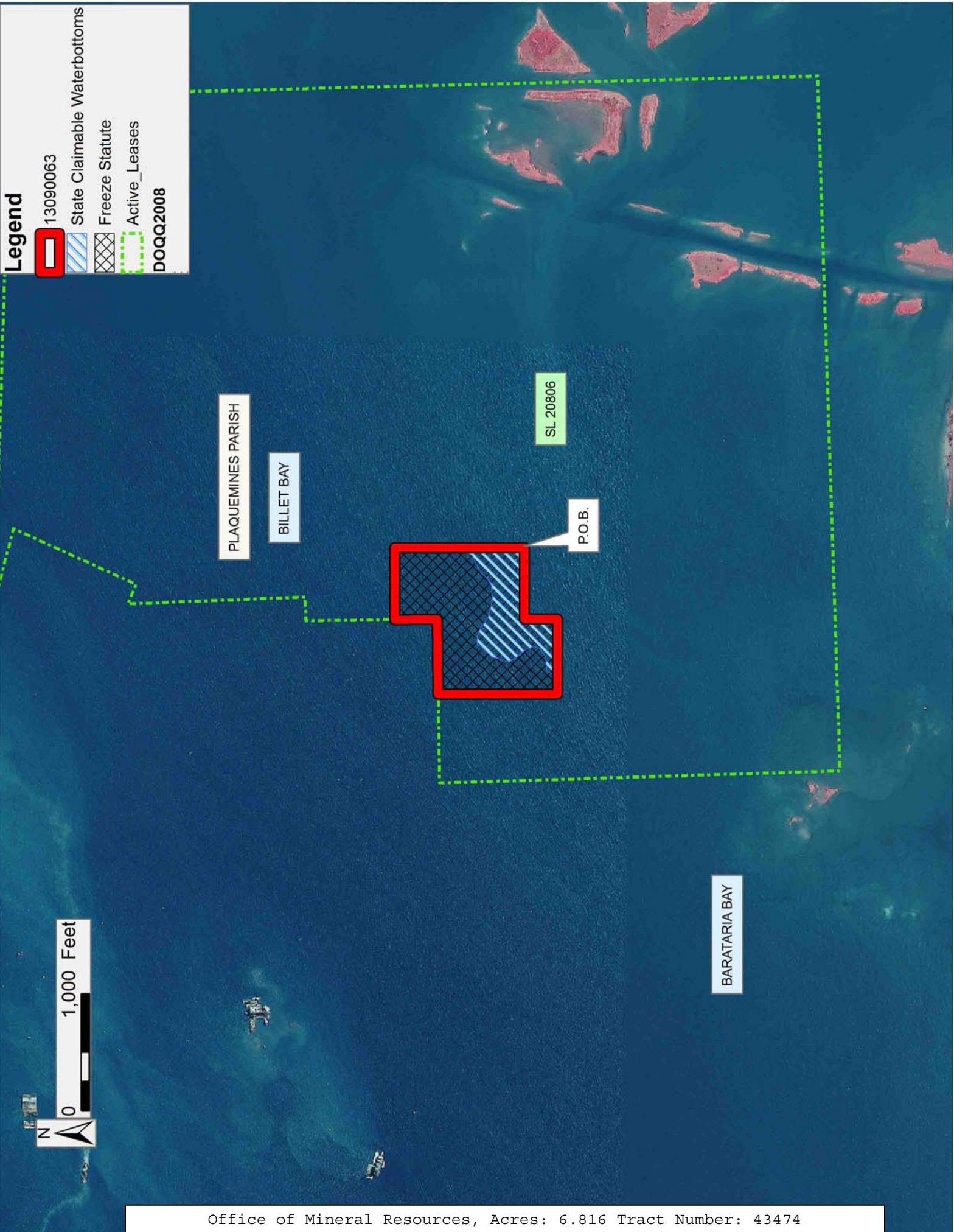
13090063

State Claimable Waterbottoms

Freeze Statute

Active\_Leases

DOQQ2008



**TRACT 43475 - Plaquemines Parish, Louisiana**

All of the lands now or formerly constituting the beds and bottoms of all water bodies of every nature and description as to which title is vested in the State of Louisiana, together with all islands arising therein and other lands formed by accretion or by reliction, where allowed by law, excepting tax adjudicated lands, and not presently under mineral lease on September 11, 2013, situated in Plaquemines Parish, Louisiana, and more particularly described as follows: Beginning at a point on the North boundary of State Lease No. 21189 having Coordinates of X = 2,494,029.14 and Y = 251,055.86; thence North 13 degrees 00 minutes 20 seconds West approximately 222 feet along the North boundary of said State Lease No. 21189 to a point on the South boundary of that certain Agreement between Cockrell et al and the State of Louisiana, dated May 16, 1938, recorded in Book 88, Page 189, in Plaquemines Parish; thence Easterly approximately 716 feet along the Southern boundary of said Agreement to a point of intersection with the North boundary of said State Lease No. 21189; thence along the boundaries of said State Lease No. 21189 the following courses: South 13 degrees 00 minutes 20 seconds East approximately 70 feet to a point having Coordinates of X = 2,494,711.19 and Y = 251,213.39 and South 76 degrees 59 minutes 40 seconds West 700.00 feet to the point of beginning, containing approximately **0.376 acres**, all as more particularly outlined on a plat on file in the Office of Mineral Resources, Department of Natural Resources. All bearings, distances and coordinates are based on Louisiana Coordinate System of 1927, (North or South Zone), where applicable.

NOTE: The above description of the Tract nominated for lease has been provided and corrected, where required, exclusively by the nomination party. Any mineral lease selected from this Tract and awarded by the Louisiana State Mineral and Energy Board shall be without warranty of any kind, either express, implied, or statutory, including, but not limited to, the implied warranties of merchantability and fitness for a particular purpose. Should the mineral lease awarded by the Louisiana State Mineral and Energy Board be subsequently modified, cancelled or abrogated due to the existence of conflicting leases, operating agreements, private claims or other future obligations or conditions which may affect all or any portion of the leased Tract, it shall not relieve the Lessee of the obligation to pay any bonus due thereon to the Louisiana State Mineral and Energy Board, nor shall the Louisiana State Mineral and Energy Board be obligated to refund any consideration paid by the Lessor prior to such modification, cancellation, or abrogation, including, but not limited to, bonuses, rentals and royalties.

NOTE: The State of Louisiana does hereby reserve, and this lease shall be subject to, the imprescriptible right of surface use in the nature of a servitude in favor of the Department of Natural Resources, including its Offices and Commissions, for the sole purpose of implementing, constructing, servicing and maintaining approved coastal zone management

and/or restoration projects. Utilization of any and all rights derived under this lease by the mineral lessee, its agents, successors or assigns, shall not interfere with nor hinder the reasonable surface use by the Department of Natural Resources, its Offices or Commissions, as herein above reserved.

Applicant: MARK A. O'NEAL & ASSOCIATES, INC.

Bidder	Cash Payment	Price/Acre	Rental	Oil	Gas	Other



**Legend**

13090065

Claimable Sate Waterbottoms

Freeze Statute

Active\_Leases

DOQQ2008



PLAQUEMINES PARISH

BARATARIA BAY



P.O.B.

SL 21189

**TRACT 43476 - Plaquemines Parish, Louisiana**

All of the lands now or formerly constituting the beds and bottoms of all water bodies of every nature and description as to which title is vested in the State of Louisiana, together with all islands arising therein and other lands formed by accretion or by reliction, where allowed by law, excepting tax adjudicated lands, and not presently under mineral lease on September 11, 2013, situated in Plaquemines Parish, Louisiana, and more particularly described as follows: Beginning at a point on the East boundary of State Lease No. 21188 and the West boundary of state Lease No. 21189 having Coordinates of X = 2,491,649.65 and Y = 250,668.30; thence along the boundaries of said State Lease No. 21189 the following courses: South 15 degrees 09 minutes 17 seconds East 102.52 feet, South 16 degrees 08 minutes 45 seconds East 92.24 feet, South 17 degrees 19 minutes 52 seconds East 82.08 feet, South 18 degrees 51 minutes 01 seconds East 71.96 feet, South 20 degrees 54 minutes 06 seconds East 62.09 feet, South 23 degrees 40 minutes 24 seconds East 52.30 feet, South 24 degrees 06 minutes 44 seconds East 48.59 feet, South 40 degrees 51 minutes 37 seconds East 58.77 feet, South 46 degrees 37 minutes 35 seconds East 67.27 feet, South 52 degrees 50 minutes 56 seconds East 77.41 feet, South 57 degrees 33 minutes 48 seconds East 88.75 feet, South 60 degrees 20 minutes 32 seconds East 48.91 feet, South 63 degrees 08 minutes 25 seconds East 100.04 feet, South 67 degrees 06 minutes 47 seconds East 98.99 feet, South 71 degrees 14 minutes 08 seconds East 99.01 feet, South 75 degrees 14 minutes 31 seconds East 100.10 feet, South 79 degrees 35 minutes 06 seconds East 102.34 feet, South 84 degrees 08 minutes 48 seconds East 105.90 feet, South 88 degrees 25 minutes 13 seconds East 110.64 feet, North 87 degrees 45 minutes 55 seconds East 116.69 feet, North 84 degrees 27 minutes 27 seconds East 61.09 feet, North 81 degrees 41 minutes 50 seconds East 63.36 feet, North 79 degrees 00 minutes 51 seconds East 65.86 feet, North 77 degrees 39 minutes 54 seconds East 74.66 feet, North 72 degrees 53 minutes 36 seconds East 65.61 feet, North 72 degrees 16 minutes 07 seconds East 74.70 feet, North 70 degrees 24 minutes 55 seconds East 78.01 feet, North 68 degrees 43 minutes 13 seconds East 81.56 feet, South 06 degrees 04 minutes 21 seconds West 1,848.07 feet, South 80 degrees 29 minutes 53 seconds West 82.99 feet, South 81 degrees 12 minutes 14 seconds West 78.47 feet, South 81 degrees 58 minutes 25 seconds West 74.13 feet, South 82 degrees 53 minutes 43 seconds West 69.94 feet, South 83 degrees 50 minutes 51 seconds West 65.78 feet, South 84 degrees 59 minutes 10 seconds West 61.79 feet, South 86 degrees 14 minutes 19 seconds West 57.92 feet, South 87 degrees 40 minutes 25 seconds West 54.19 feet, South 89 degrees 50 minutes 08 seconds West 104.50 feet, North 87 degrees 27 minutes 17 seconds West 104.70 feet, North 84 degrees 42 minutes 36 seconds West 105.75 feet, North 82 degrees 05 minutes 45 seconds West 107.62 feet and North 79 degrees 44 minutes 15 seconds West 108.89 feet to a point on its West boundary and a point on the East boundary of said State Lease No. 21188 having Coordinates of X = 2,492,163.15 and Y = 248,094.80; thence along the boundaries of said State Lease No. 21188 the following courses: North 77 degrees 34 minutes 55 seconds West 109.51 feet, North 75 degrees 24 minutes 23 seconds West 110.93 feet, North 73 degrees 21 minutes 58

seconds West 113.19 feet, North 70 degrees 49 minutes 37 seconds West 117.84 feet, North 68 degrees 01 minutes 59 seconds West 125.24 feet, North 65 degrees 32 minutes 43 seconds 133.58 feet, North 63 degrees 25 minutes 01 seconds West 142.80 feet and North 07 degrees 08 minutes 05 seconds East 2,302.68 feet to the point of beginning, containing approximately **33.562 acres**, all as more particularly outlined on a plat on file in the Office of Mineral Resources, Department of Natural Resources. All bearings, distances and coordinates are based on Louisiana Coordinate System of 1927, (North or South Zone), where applicable.

NOTE: The above description of the Tract nominated for lease has been provided and corrected, where required, exclusively by the nomination party. Any mineral lease selected from this Tract and awarded by the Louisiana State Mineral and Energy Board shall be without warranty of any kind, either express, implied, or statutory, including, but not limited to, the implied warranties of merchantability and fitness for a particular purpose. Should the mineral lease awarded by the Louisiana State Mineral and Energy Board be subsequently modified, cancelled or abrogated due to the existence of conflicting leases, operating agreements, private claims or other future obligations or conditions which may affect all or any portion of the leased Tract, it shall not relieve the Lessee of the obligation to pay any bonus due thereon to the Louisiana State Mineral and Energy Board, nor shall the Louisiana State Mineral and Energy Board be obligated to refund any consideration paid by the Lessor prior to such modification, cancellation, or abrogation, including, but not limited to, bonuses, rentals and royalties.

NOTE: The State of Louisiana does hereby reserve, and this lease shall be subject to, the imprescriptible right of surface use in the nature of a servitude in favor of the Department of Natural Resources, including its Offices and Commissions, for the sole purpose of implementing, constructing, servicing and maintaining approved coastal zone management and/or restoration projects. Utilization of any and all rights derived under this lease by the mineral lessee, its agents, successors or assigns, shall not interfere with nor hinder the reasonable surface use by the Department of Natural Resources, its Offices or Commissions, as herein above reserved.

Bidder	Cash Payment	Price/Acre	Rental	Oil	Gas	Other

Applicant: MARK A. O'NEAL & ASSOCIATES, INC.



**Legend**

13090064

Claimable State Waterbottoms

Freeze Statute

Active\_Leases

DOQQ2008



0 2,000 Feet

PLAQUEMINES PARISH

BARATARIA BAY

P.O.B.

SL 21189

SL 21188

BAY LONG

**TRACT 43477 - Terrebonne Parish, Louisiana**

All of the lands now or formerly constituting the beds and bottoms of all water bodies of every nature and description as to which title is vested in the State of Louisiana, together with all islands arising therein and other lands formed by accretion or by reliction, where allowed by law, excepting tax adjudicated lands, and not presently under mineral lease on September 11, 2013, situated in Terrebonne Parish, Louisiana, and more particularly described as follows: Beginning at a point having Coordinates of X = 2,181,372.00 and Y = 175,962.00; thence North 8848.42 feet to a point having Coordinates of X = 2,181,372.00 and Y = 184,810.42; thence East 9,140.61 feet to a point having Coordinates of X = 2,190,512.61 and Y = 184,810.42; thence North 9,160.58 feet to a point having Coordinates of X = 2,190,512.61 and Y = 193,971.00; thence East 2,862.39 feet to a point having Coordinates of X = 2,193,375.00 and Y = 193,971.00; thence South 18,009.00 feet to a point having Coordinates of X = 2,193,375.00 and Y = 175,962.00; thence West 12,003.00 feet to the point of beginning, **LESS AND EXCEPT** any right, title, and interest in lands owned by and not under lease from the State of Louisiana, on behalf of the Terrebonne Parish School Board, situated in Section 16, Township 22 South, Range 17 East, Terrebonne Parish, Louisiana, contained within the above described tract, and **LESS AND EXCEPT** all that part of State Lease No. 21091 that may lie within the above described tract, more particularly described as follows: Commencing at the point of beginning of the above described tract having Coordinates of X = 2,181,372.00 and Y = 175,962.00; thence North 52 degrees 47 minutes 14 seconds East 6,874.05 feet to the Northwest corner of said State Lease No. 21091 having Coordinates of X = 2,186,846.46 and Y = 180,119.27; thence along the boundary of said State Lease No. 21091 the following courses and distances: East 3,800.00 feet to a point having Coordinates of X = 2,190,646.46 and Y = 180,119.27; thence South 4,000.00 feet to a point having Coordinates of X = 2,190,646.46 and Y = 176,119.27; thence West 3,800.00 feet to a point having Coordinates of X = 2,186,846.46 and Y = 176,119.27; thence North 4,000.00 feet to its point of beginning, containing approximately **1,565 acres**, all as more particularly outlined on a plat on file in the Office of Mineral Resources, Department of Natural Resources. All bearings, distances and coordinates are based on Louisiana Coordinate System of 1927, (North or South Zone), where applicable.

NOTE: The above description of the Tract nominated for lease has been provided and corrected, where required, exclusively by the nomination party. Any mineral lease selected from this Tract and awarded by the Louisiana State Mineral and Energy Board shall be without warranty of any kind, either express, implied, or statutory, including, but not limited to, the implied warranties of merchantability and fitness for a particular purpose. Should the mineral lease awarded by the Louisiana State Mineral and Energy Board be subsequently modified, cancelled or abrogated due to the existence of conflicting leases, operating agreements, private claims or other future obligations or conditions which may affect all or any portion of the leased Tract, it shall not relieve the Lessee of the

obligation to pay any bonus due thereon to the Louisiana State Mineral and Energy Board, nor shall the Louisiana State Mineral and Energy Board be obligated to refund any consideration paid by the Lessor prior to such modification, cancellation, or abrogation, including, but not limited to, bonuses, rentals and royalties.

NOTE: The State of Louisiana does hereby reserve, and this lease shall be subject to, the imprescriptible right of surface use in the nature of a servitude in favor of the Department of Natural Resources, including its Offices and Commissions, for the sole purpose of implementing, constructing, servicing and maintaining approved coastal zone management and/or restoration projects. Utilization of any and all rights derived under this lease by the mineral lessee, its agents, successors or assigns, shall not interfere with nor hinder the reasonable surface use by the Department of Natural Resources, its Offices or Commissions, as herein above reserved.

Applicant: ALLEN & KIRMSE, LTD.

Bidder	Cash Payment	Price/Acre	Rental	Oil	Gas	Other



**Legend**



13090004

Active\_Leases



DOQQ2008



0 3,000 Feet

TERREBONNE PARISH

BAYOU SALE

T22S - R17E

BAYOU NETOUCHE PAS

SL 21091

BAY DE MONGLES

BIG MISALE BAYOU

SL 21092

P.O.B.

BAY CHARLIE



**TRACT 43478 - Terrebonne Parish, Louisiana**

All of the lands now or formerly constituting the beds and bottoms of all water bodies of every nature and description as to which title is vested in the State of Louisiana, together with all islands arising therein and other lands formed by accretion or by reliction, where allowed by law, excepting tax adjudicated lands, and not presently under mineral lease on September 11, 2013, situated in Terrebonne Parish, Louisiana, and more particularly described as follows: Beginning at a point having Coordinates of X = 2,193,375.00 and Y = 193,971.00; thence East 8,649.00 feet to a point having Coordinates of X = 2,202,024.00 and Y = 193,971.00; thence South approximately 32 feet to a point on the boundary of State Lease No. 15785, as amended having a Coordinate of X = 2,202,024.00; thence along the boundary of said State Lease No. 15785 the following courses and distances: South 72 degrees 58 minutes 11 seconds West 497.23 feet, North 39 degrees 06 minutes 59 seconds West 92.50 feet, South 79 degrees 22 minutes 08 seconds West 564.44 feet, South 74 degrees 46 minutes 10 seconds West 214.23 feet, South 64 degrees 39 minutes 17 seconds West 233.40 feet and South 55 degrees 52 minutes 56 seconds West 257.46 feet to its Southwest corner and the Northwest corner of State Lease No. 16790, as amended; thence along the boundary of said State Lease No. 16790 the following courses and distances: South 55 degrees 52 minutes 54 seconds West approximately 16 feet to a point having Coordinates of X = 2,200,291.43 and Y = 193,451.06, South 43 degrees 06 minutes 45 seconds West 183.12 feet to a point having Coordinates of X = 2,200,166.28 and Y = 193,317.38, South 33 degrees 05 minutes 22 seconds West 1,040.26 feet to a point having Coordinates of X = 2,199,598.35 and Y = 192,445.83, South 27 degrees 28 minutes 38 seconds West 558.67 feet to a point having Coordinates of X = 2,199,340.59 and Y = 191,950.18, South 21 degrees 31 minutes 34 seconds West 172.46 feet to a point having Coordinates of X = 2,199,277.31 and Y = 191,789.75, South 14 degrees 09 minutes 53 seconds West 284.46 feet to a point having Coordinates of X = 2,199,207.70 and Y = 191,513.94, South 05 degrees 14 minutes 13 seconds West 273.45 feet to a point having Coordinates of X = 2,199,182.74 and Y = 191,241.63, South 00 degrees 29 minutes 36 seconds East 162.55 feet to a point having Coordinates of X = 2,199,184.14 and Y = 191,079.08, South 06 degrees 13 minutes 17 seconds East 350.36 feet to a point having Coordinates of X = 2,199,222.10 and Y = 190,730.79, South 09 degrees 28 minutes 14 seconds East 891.00 feet to a point having Coordinates of X = 2,199,368.71 and Y = 189,851.93, South 40 degrees 33 minutes 29 seconds East 1,842.76 feet to a point having Coordinates of X = 2,200,566.90 and Y = 188,451.90, South 44 degrees 58 minutes 36 seconds East 68.83 feet to a point having Coordinates of X = 2,200,615.55 and Y = 188,403.21, South 62 degrees 29 minutes 17 seconds East 74.17 feet to a point having Coordinates of X = 2,200,681.33 and Y = 188,368.94, South 83 degrees 56 minutes 51 seconds East 538.69 feet to a point having Coordinates of X = 2,201,217.02 and Y = 188,312.14, North 81 degrees 29 minutes 04 seconds East 209.89 feet to a point having Coordinates of X = 2,201,424.60 and Y = 188,343.22, North 66 degrees 34 minutes 57 seconds East 141.39 feet to a point having Coordinates of X = 2,201,554.34 and Y = 188,399.42, North 46 degrees 21

minutes 19 seconds East 724.56 feet to a point having Coordinates of X = 2,202,078.65 and Y = 188,899.50, North 41 degrees 59 minutes 18 seconds East 385.65 feet to a point having Coordinates of X = 2,202,336.65 and Y = 189,186.14, North 43 degrees 52 minutes 01 seconds East 2,699.32 feet to a point having Coordinates of X = 2,204,207.24 and Y = 191,132.22, North 46 degrees 59 minutes 56 seconds East 440.68 feet to a point having Coordinates of X = 2,204,529.52 and Y = 191,432.77 and North 38 degrees 14 minutes 44 seconds East approximately 99 feet to a point on the boundary of State Lease No. 199, as amended; thence Southerly approximately 15,551 feet along the boundary of said State Lease No. 199 to the point of intersection with an East West line having a Coordinate of Y = 175,962.00; thence West approximately 11,451 feet to a point having Coordinates of X = 2,193,375.00 and Y = 175,962.00; thence North 18,009.00 feet to the point of beginning, **LESS AND EXCEPT**, any portion of said State Lease No. 199, said State Lease No. 15785 and said State Lease No. 16790 that may lie within the above described tract, containing approximately **1,639 acres**, all as more particularly outlined on a plat on file in the Office of Mineral Resources, Department of Natural Resources. All bearings, distances and coordinates are based on Louisiana Coordinate System of 1927, (North or South Zone), where applicable.

NOTE: The above description of the Tract nominated for lease has been provided and corrected, where required, exclusively by the nomination party. Any mineral lease selected from this Tract and awarded by the Louisiana State Mineral and Energy Board shall be without warranty of any kind, either express, implied, or statutory, including, but not limited to, the implied warranties of merchantability and fitness for a particular purpose. Should the mineral lease awarded by the Louisiana State Mineral and Energy Board be subsequently modified, cancelled or abrogated due to the existence of conflicting leases, operating agreements, private claims or other future obligations or conditions which may affect all or any portion of the leased Tract, it shall not relieve the Lessee of the obligation to pay any bonus due thereon to the Louisiana State Mineral and Energy Board, nor shall the Louisiana State Mineral and Energy Board be obligated to refund any consideration paid by the Lessor prior to such modification, cancellation, or abrogation, including, but not limited to, bonuses, rentals and royalties.

NOTE: The State of Louisiana does hereby reserve, and this lease shall be subject to, the imprescriptible right of surface use in the nature of a servitude in favor of the Department of Natural Resources, including its Offices and Commissions, for the sole purpose of implementing, constructing, servicing and maintaining approved coastal zone management and/or restoration projects. Utilization of any and all rights derived under this lease by the mineral lessee, its agents, successors or assigns, shall not interfere with nor hinder the reasonable surface use by the Department of Natural Resources, its Offices or Commissions, as herein above reserved.

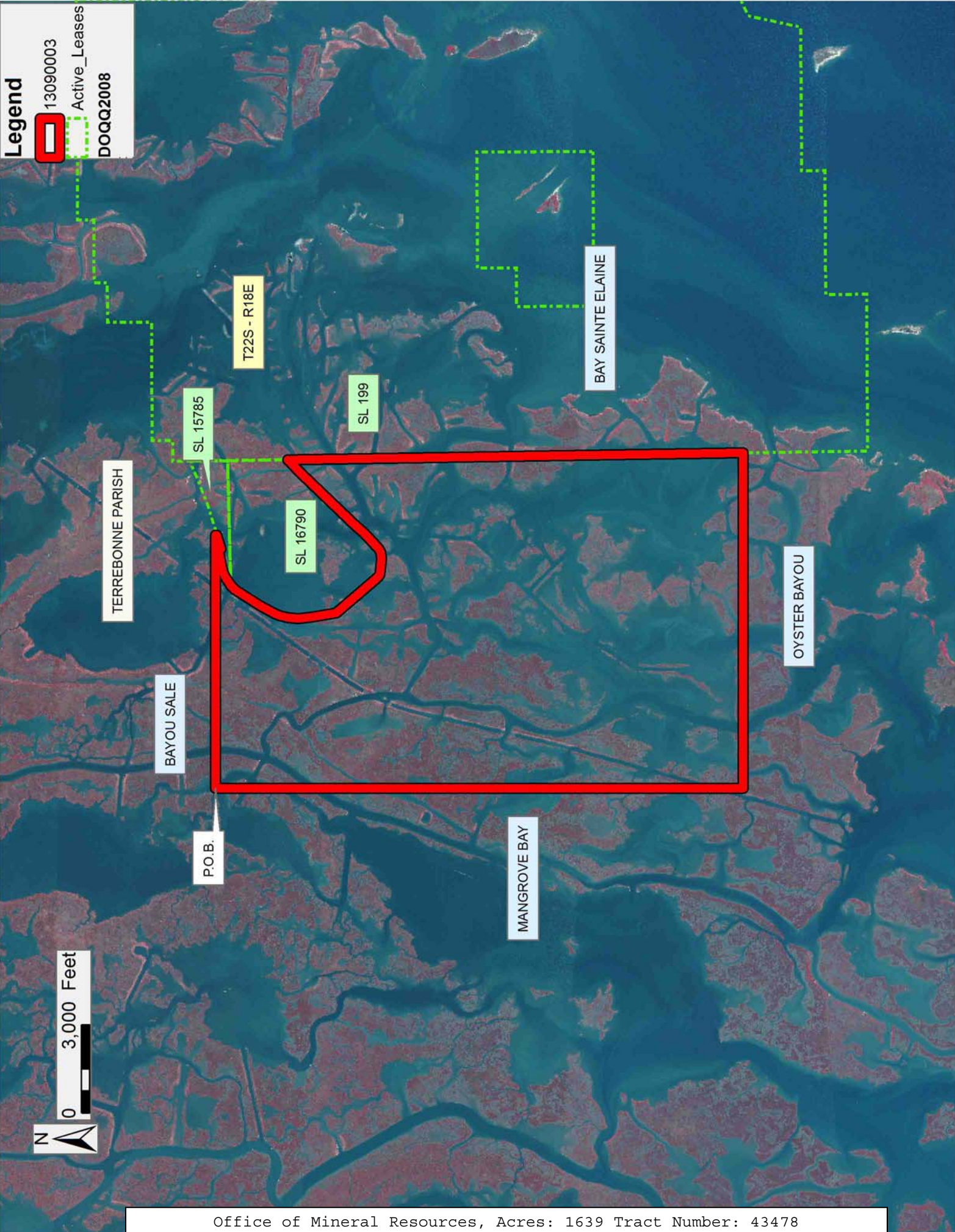
Applicant: ALLEN & KIRMSE, LTD.

Bidder	Cash Payment	Price/Acre	Rental	Oil	Gas	Other

**Legend**

13090003  
Active\_Leases

DOQQ2008





**TRACT 43479 - Terrebonne Parish, Louisiana**

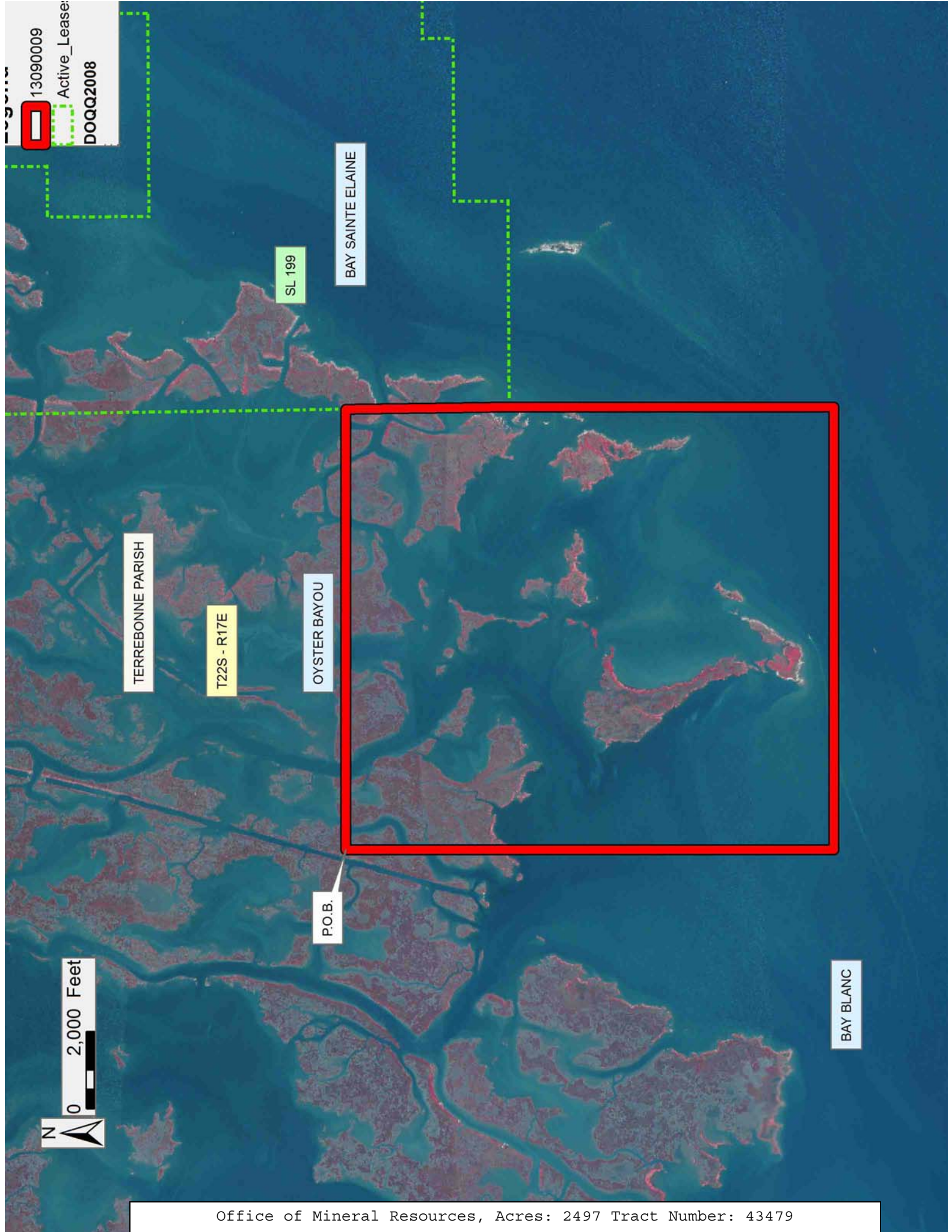
All of the lands now or formerly constituting the beds and bottoms of all water bodies of every nature and description as to which title is vested in the State of Louisiana, together with all islands arising therein and other lands formed by accretion or by reliction, where allowed by law, excepting tax adjudicated lands, and not presently under mineral lease on September 11, 2013, situated in Terrebonne Parish, Louisiana, and more particularly described as follows: Beginning at a point having Coordinates of X = 2,193,375.00 and Y = 175,962.00; thence East approximately 11,451 feet to a point on the boundary of State Lease No. 199, as amended having a Coordinate of Y = 175,962.00; thence Southerly approximately 4,245 feet along the boundary of said State Lease No. 199 to its Southwest corner; thence Southerly approximately 8,435 feet to a point having Coordinates of X = 2,204,888.00 and Y = 163,282.00; thence West 11,513.00 feet to a point having Coordinates of X = 2,193,375.00 and Y = 163,282.00; thence North 12,680.00 feet to the point of beginning, **LESS AND EXCEPT**, any portion of said State Lease No. 199 that may lie within the above described tract, containing approximately **2,497 acres**, all as more particularly outlined on a plat on file in the Office of Mineral Resources, Department of Natural Resources. All bearings, distances and coordinates are based on Louisiana Coordinate System of 1927, (North or South Zone), where applicable.

NOTE: The above description of the Tract nominated for lease has been provided and corrected, where required, exclusively by the nomination party. Any mineral lease selected from this Tract and awarded by the Louisiana State Mineral and Energy Board shall be without warranty of any kind, either express, implied, or statutory, including, but not limited to, the implied warranties of merchantability and fitness for a particular purpose. Should the mineral lease awarded by the Louisiana State Mineral and Energy Board be subsequently modified, cancelled or abrogated due to the existence of conflicting leases, operating agreements, private claims or other future obligations or conditions which may affect all or any portion of the leased Tract, it shall not relieve the Lessee of the obligation to pay any bonus due thereon to the Louisiana State Mineral and Energy Board, nor shall the Louisiana State Mineral and Energy Board be obligated to refund any consideration paid by the Lessor prior to such modification, cancellation, or abrogation, including, but not limited to, bonuses, rentals and royalties.

NOTE: The State of Louisiana does hereby reserve, and this lease shall be subject to, the imprescriptible right of surface use in the nature of a servitude in favor of the Department of Natural Resources, including its Offices and Commissions, for the sole purpose of implementing, constructing, servicing and maintaining approved coastal zone management and/or restoration projects. Utilization of any and all rights derived under this lease by the mineral lessee, its agents, successors or assigns, shall not interfere with nor hinder the reasonable surface use by the Department of Natural Resources, its Offices or Commissions, as herein above reserved.

Applicant: ALLEN & KIRMSE, LTD.

Bidder	Cash Payment	Price/Acre	Rental	Oil	Gas	Other



13090009  
Active Lease:  
DOQQ2008

TERREBONNE PARISH

T22S - R17E

OYSTER BAYOU

P.O.B.

BAY SAINTE ELAINE

SL 199

BAY BLANC





**TRACT 43480 - Portion of Block 21, Ship Shoal Area, Terrebonne Parish, Louisiana**

All of the lands now or formerly constituting the beds and bottoms of all water bodies of every nature and description as to which title is vested in the State of Louisiana, together with all islands arising therein and other lands formed by accretion or by reliction, where allowed by law, excepting tax adjudicated lands, and not presently under mineral lease on September 11, 2013, situated in Terrebonne Parish, Louisiana, and more particularly described as follows: Beginning at a point having Coordinates of X = 2,181,372.00 and Y = 175,962.00; thence East 12,003.00 feet to a point having Coordinates of X = 2,193,375.00 and Y = 175,962.00; thence South 14,536.30 feet to a point having Coordinates of X = 2,193,375.00 and Y = 161,425.70; thence West 12,003.00 feet to a point having Coordinates of X = 2,181,372.00 and Y = 161,425.70; thence North 14,536.30 feet to the point of beginning, **LESS AND EXCEPT** all that part of State Lease No. 21092 that may lie within the above described tract, more particularly described as follows: Commencing at the point of beginning of the above described tract having Coordinates of X = 2,181,372.00 and Y = 175,962.00; thence South 85 degrees 39 minutes 14 seconds East 3,761.04 feet to the Northwest corner of said State Lease No. 21092 having Coordinates of X = 2,185,122.23 and Y = 175,676.99; thence along the boundary of said State Lease No. 21092 the following courses and distances: East 3,727.49 feet to a point having Coordinates of X = 2,188,849.72 and Y = 175,676.99; thence South 4,157.85 feet to a point having Coordinates of X = 2,188,849.72 and Y = 171,519.14; thence West 3,727.49 feet to a point having Coordinates of X = 2,185,122.23 and Y = 171,519.14; thence North 4,157.85 feet to its point of beginning, containing approximately **2,427 acres**, all as more particularly outlined on a plat on file in the Office of Mineral Resources, Department of Natural Resources. All bearings, distances and coordinates are based on Louisiana Coordinate System of 1927, (North or South Zone), where applicable.

NOTE: The above description of the Tract nominated for lease has been provided and corrected, where required, exclusively by the nomination party. Any mineral lease selected from this Tract and awarded by the Louisiana State Mineral and Energy Board shall be without warranty of any kind, either express, implied, or statutory, including, but not limited to, the implied warranties of merchantability and fitness for a particular purpose. Should the mineral lease awarded by the Louisiana State Mineral and Energy Board be subsequently modified, cancelled or abrogated due to the existence of conflicting leases, operating agreements, private claims or other future obligations or conditions which may affect all or any portion of the leased Tract, it shall not relieve the Lessee of the obligation to pay any bonus due thereon to the Louisiana State Mineral and Energy Board, nor shall the Louisiana State Mineral and Energy Board be obligated to refund any consideration paid by the Lessor prior to such modification, cancellation, or abrogation, including, but not limited to, bonuses, rentals and royalties.

NOTE: The State of Louisiana does hereby reserve, and this lease shall be subject to, the imprescriptible right of surface use in the nature of a servitude in favor of the Department of Natural Resources, including its Offices and Commissions, for the sole purpose of implementing, constructing, servicing and maintaining approved coastal zone management and/or restoration projects. Utilization of any and all rights derived under this lease by the mineral lessee, its agents, successors or assigns, shall not interfere with nor hinder the reasonable surface use by the Department of Natural Resources, its Offices or Commissions, as herein above reserved.

Applicant: ALLEN & KIRMSE, LTD.

Bidder	Cash Payment	Price/Acre	Rental	Oil	Gas	Other

**Legend**

- 13090008
- Active\_Leases
- DOQQ2008



BAY BLANC

SL 21091

TERREBONNE PARISH

BAY DE MONGLES

SL 21092

P.O.B.

BIG MISALE BAYOU

0 2,000 Feet





**TRACT 43481 - Terrebonne Parish, Louisiana**

All of the lands now or formerly constituting the beds and bottoms of all water bodies of every nature and description as to which title is vested in the State of Louisiana, together with all islands arising therein and other lands formed by accretion or by reliction, where allowed by law, excepting tax adjudicated lands, and not presently under mineral lease on September 11, 2013, situated in Terrebonne Parish, Louisiana, and more particularly described as follows: Beginning at a point having Coordinates of X = 2,169,320.00 and Y = 175,962.00; thence East 12,052.00 feet to a point having Coordinates of X = 2,181,372.00 and Y = 175,962.00; thence South 14,536.30 feet to a point having Coordinates of X = 2,181,372.00 and Y = 161,425.70; thence West 12,052.00 feet to a point having Coordinates of X = 2,169,320.00 and Y = 161,425.70; thence North 14,536.30 feet to the point of beginning, **LESS AND EXCEPT** all that part of State Lease No. 21090 that may lie within the above described tract, more particularly described as follows: Commencing at the point of beginning of the above described tract having Coordinates of X = 2,169,320.00 and Y = 175,962.00; thence South 48 degrees 20 minutes 39 seconds East 3,854.64 feet to the Northwest corner of said State Lease No. 21090 having Coordinates of X = 2,172,200.00 and Y = 173,400.00; thence along the boundary of said State Lease No. 21090 the following courses and distances: East 3,200.00 feet to a point having Coordinates of X = 2,175,400.00 and Y = 173,400.00; thence South 2,700.00 feet to a point having Coordinates of X = 2,175,400.00 and Y = 170,700.00; thence West 3,200.00 feet to a point having Coordinates of X = 2,172,200.00 and Y = 170,700.00; thence North 2,700.00 feet to its point of beginning, containing approximately **2,414 acres**, all as more particularly outlined on a plat on file in the Office of Mineral Resources, Department of Natural Resources. All bearings, distances and coordinates are based on Louisiana Coordinate System of 1927, (North or South Zone), where applicable.

NOTE: The above description of the Tract nominated for lease has been provided and corrected, where required, exclusively by the nomination party. Any mineral lease selected from this Tract and awarded by the Louisiana State Mineral and Energy Board shall be without warranty of any kind, either express, implied, or statutory, including, but not limited to, the implied warranties of merchantability and fitness for a particular purpose. Should the mineral lease awarded by the Louisiana State Mineral and Energy Board be subsequently modified, cancelled or abrogated due to the existence of conflicting leases, operating agreements, private claims or other future obligations or conditions which may affect all or any portion of the leased Tract, it shall not relieve the Lessee of the obligation to pay any bonus due thereon to the Louisiana State Mineral and Energy Board, nor shall the Louisiana State Mineral and Energy Board be obligated to refund any consideration paid by the Lessor prior to such modification, cancellation, or abrogation, including, but not limited to, bonuses, rentals and royalties.

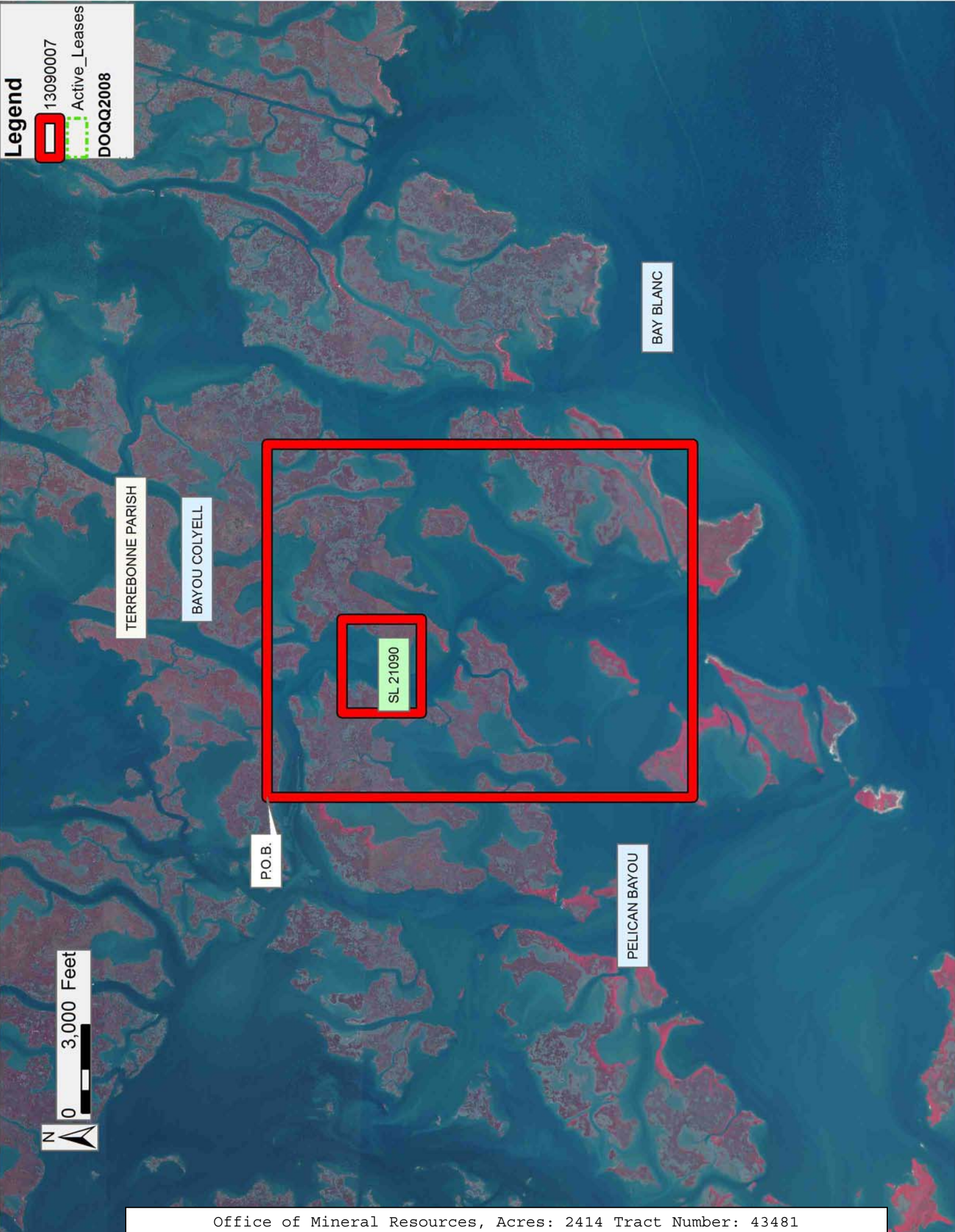
NOTE: The State of Louisiana does hereby reserve, and this lease shall be subject to, the imprescriptible right of surface use in the nature of a servitude in favor of the Department of Natural Resources, including its Offices and Commissions, for the sole purpose of implementing, constructing, servicing and maintaining approved coastal zone management and/or restoration projects. Utilization of any and all rights derived under this lease by the mineral lessee, its agents, successors or assigns, shall not interfere with nor hinder the reasonable surface use by the Department of Natural Resources, its Offices or Commissions, as herein above reserved.

Applicant: ALLEN & KIRMSE, LTD.

Bidder	Cash Payment	Price/Acre	Rental	Oil	Gas	Other

**Legend**

13090007  
Active\_Leases  
DOQQ2008





**TRACT 43482 - Terrebonne Parish, Louisiana**

All of the lands now or formerly constituting the beds and bottoms of all water bodies of every nature and description as to which title is vested in the State of Louisiana, together with all islands arising therein and other lands formed by accretion or by reliction, where allowed by law, excepting tax adjudicated lands, and not presently under mineral lease on September 11, 2013, situated in Terrebonne Parish, Louisiana, and more particularly described as follows: Beginning at a point having Coordinates of X = 2,204,888.00 and Y = 163,282.00; thence Northerly approximately 8,435 feet to the Southwest corner of State Lease No. 199, as amended; thence along the boundary of said State Lease No. 199 the following courses and distances: Easterly approximately 5,355 feet, Northerly approximately 1,400 feet and Easterly approximately 2,316 feet to the point of intersection with a North-South line having a Coordinate of X = 2,212,550.00; thence South approximately 2,562 feet to the Northwest corner of State Lease No. 16510, as amended having Coordinates of X = 2,212,550.00 and Y = 170,600.00; thence South 2,710.00 feet along the boundary of said State Lease No. 16510 to its Southwest corner and the Northwest corner of State Lease No. 16511 having Coordinates of X = 2,212,550.00 and Y = 167,890.00; thence along the boundary of said State Lease No. 16511 the following courses and distances: South approximately 300 feet and Southeasterly approximately 585 feet to the Northwest corner of State Lease No. 16705, as amended having a Coordinate of X = 2,213,128.02; thence along the boundary of said State Lease No. 16705 the following courses and distances: South approximately 2,290 feet to a point having Coordinates of X = 2,213,128.02 and Y = 165,209.74 and East 4,089.98 feet to a point having Coordinates of X = 2,217,218.00 and Y = 165,209.74; thence South 2,885.74 feet to a point having Coordinates of X = 2,217,218.00 and Y = 162,324.00; thence West 4,304.04 feet to a point having Coordinates of X = 2,212,913.96 and Y = 162,324.00; thence South 2,399.40 feet to the Northeast corner of State Lease No. 19477 having Coordinates of X = 2,212,913.96 and Y = 159,924.60; thence South 89 degrees 39 minutes 55 seconds West 4,172.50 feet along the boundary of said State Lease No. 19477 to its Northwest corner having Coordinates of X = 2,208,741.53 and Y = 159,900.22; thence West 3,853.53 feet to a point having Coordinates of X = 2,204,888.00 and Y = 159,900.22; thence North 3,381.78 feet to the point of beginning, **LESS AND EXCEPT** any portion of said State Lease No. 199, said State Lease No. 16511 and said State Lease No. 16705 that may lie within the above described tract, containing approximately **2,500 acres**, all as more particularly outlined on a plat on file in the Office of Mineral Resources, Department of Natural Resources. All bearings, distances and coordinates are based on Louisiana Coordinate System of 1927, (North or South Zone), where applicable.

NOTE: The above description of the Tract nominated for lease has been provided and corrected, where required, exclusively by the nomination party. Any mineral lease selected from this Tract and awarded by the Louisiana State Mineral and Energy Board shall be without warranty of any kind, either express, implied, or statutory, including, but not limited

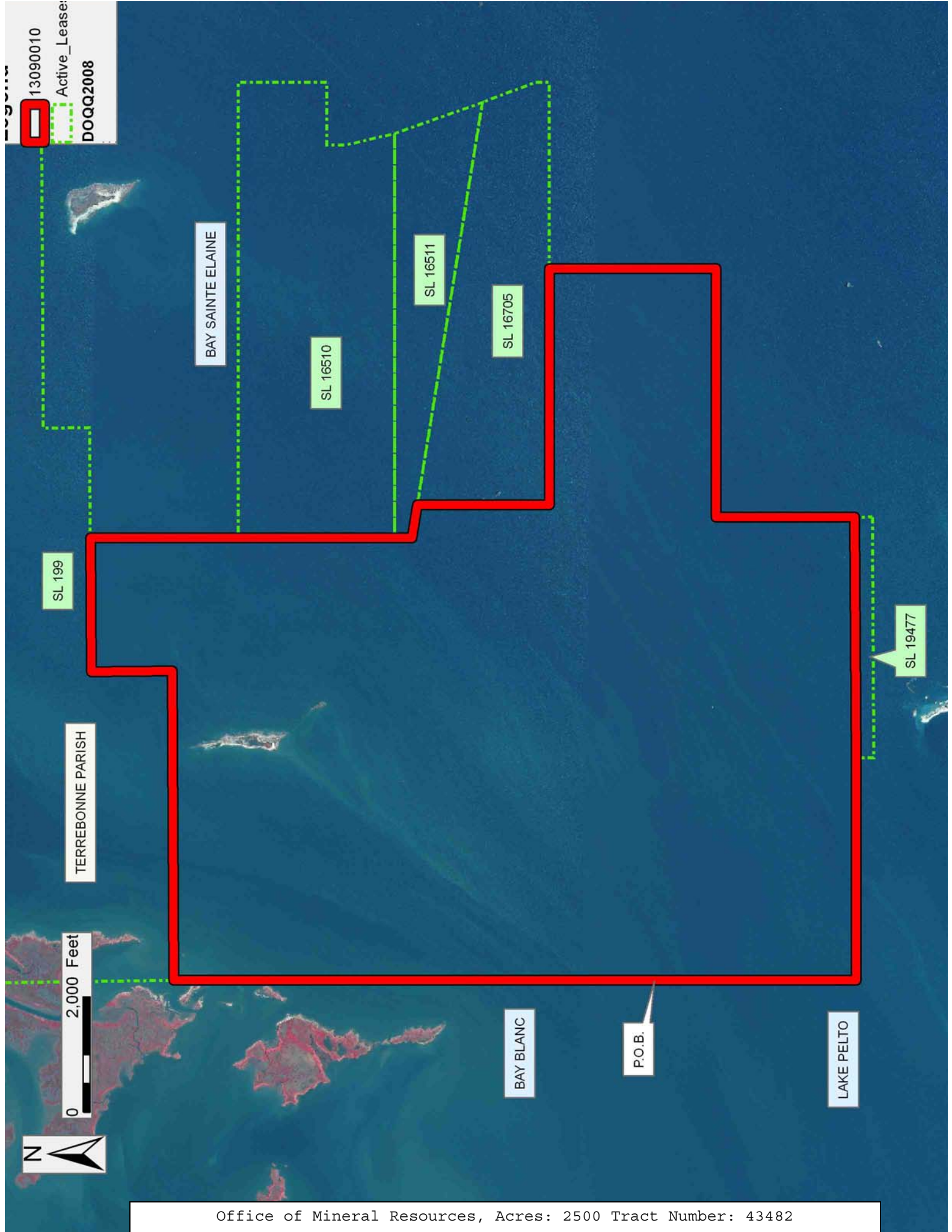
to, the implied warranties of merchantability and fitness for a particular purpose. Should the mineral lease awarded by the Louisiana State Mineral and Energy Board be subsequently modified, cancelled or abrogated due to the existence of conflicting leases, operating agreements, private claims or other future obligations or conditions which may affect all or any portion of the leased Tract, it shall not relieve the Lessee of the obligation to pay any bonus due thereon to the Louisiana State Mineral and Energy Board, nor shall the Louisiana State Mineral and Energy Board be obligated to refund any consideration paid by the Lessor prior to such modification, cancellation, or abrogation, including, but not limited to, bonuses, rentals and royalties.

NOTE: The State of Louisiana does hereby reserve, and this lease shall be subject to, the imprescriptible right of surface use in the nature of a servitude in favor of the Department of Natural Resources, including its Offices and Commissions, for the sole purpose of implementing, constructing, servicing and maintaining approved coastal zone management and/or restoration projects. Utilization of any and all rights derived under this lease by the mineral lessee, its agents, successors or assigns, shall not interfere with nor hinder the reasonable surface use by the Department of Natural Resources, its Offices or Commissions, as herein above reserved.

Applicant: ALLEN & KIRMSE, LTD.

Bidder	Cash Payment	Price/Acre	Rental	Oil	Gas	Other

13090010  
Active\_Lease:  
DOQQ2008



BAY SAINTE ELAINE

SL 16510

SL 16511

SL 16705

SL 199

TERREBONNE PARISH

0 2,000 Feet



SL 19477

BAY BLANC

P.O.B.

LAKE PELTO