

**TRACT 43495 - St. Helena Parish, Louisiana**

A certain Tract of land, excluding the beds and bottoms of all navigable waters, belonging to and not presently under mineral lease from St. Helena Parish Police Jury on September 11, 2013, being more fully described as follows: Beginning at a point on the South line of the TUSC RA SU C, Order No. 1183 having Coordinates of X = 2,207,796.89 and Y = 790,778.03; thence North 64 degrees 50 minutes 18 seconds East 1,042.15 feet to a point having Coordinates of X = 2,208,740.15 and Y = 791,221.13; thence North 65 degrees 29 minutes 19 seconds East 193.80 feet to a point having Coordinates of X = 2,208,916.48 and Y = 791,301.53; thence South 12 degrees 01 minutes 15 seconds East 535.24 feet to a point on the said TUSC RA SU C, Order No. 1183 South line having Coordinates of X = 2,209,027.95 and Y = 790,778.03; thence West 1,231.08 feet to the point of beginning, containing **7.42 acres**, all as more particularly outlined on a plat on file in the Office of Mineral Resources, Department of Natural Resources. The description is based on information provided by the State Agency regarding location and ownership of surface and mineral rights. All bearings, distances and coordinates, if applicable, are based on Louisiana Coordinate System of 1927, (North or South Zone).

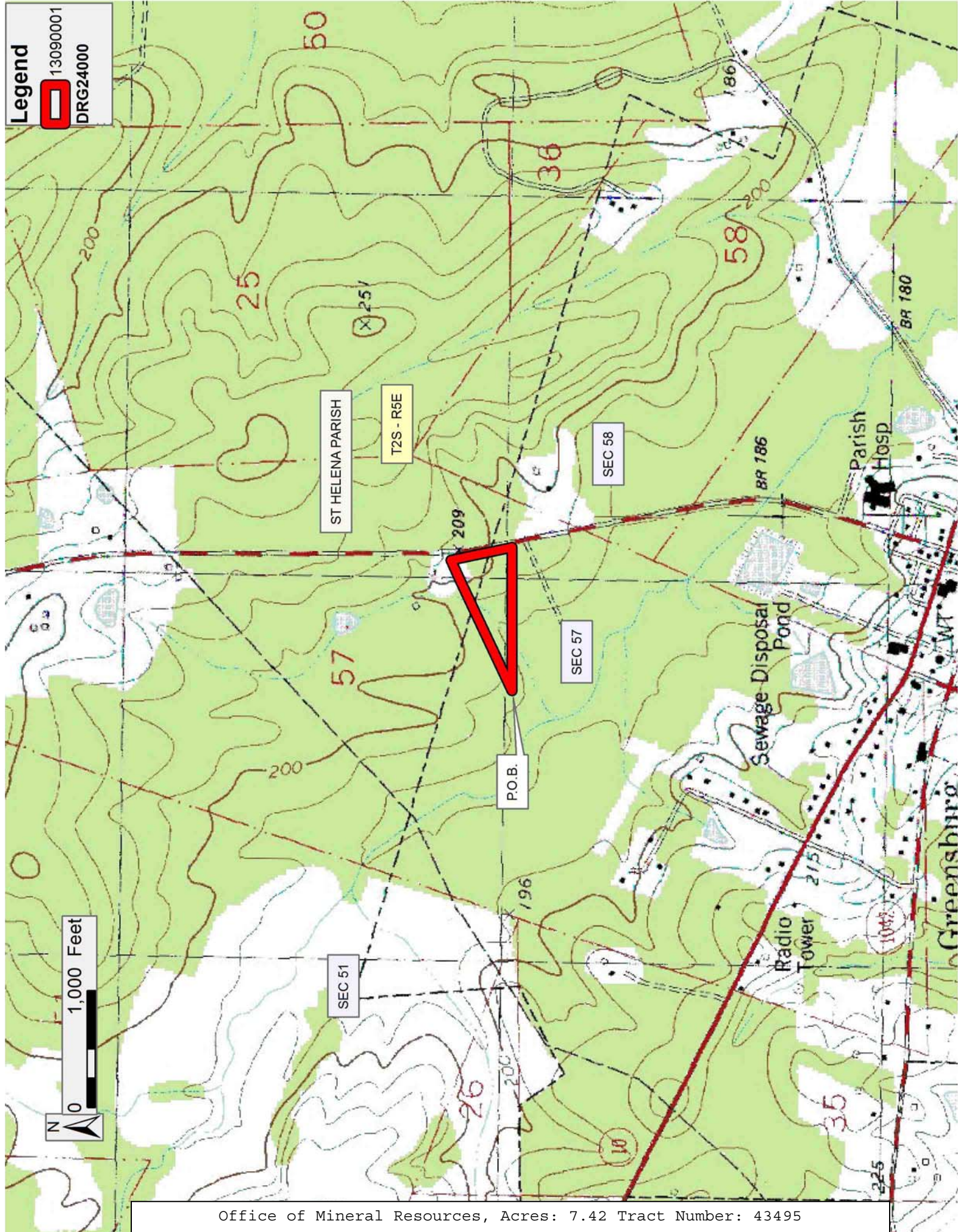
NOTE: The above description of the Tract nominated for lease has been provided and corrected, where required, exclusively by the nomination party. Any mineral lease selected from this Tract and awarded by the Louisiana State Mineral and Energy Board shall be without warranty of any kind, either express, implied, or statutory, including, but not limited to, the implied warranties of merchantability and fitness for a particular purpose. Should the mineral lease awarded by the Louisiana State Mineral and Energy Board be subsequently modified, cancelled or abrogated due to the existence of conflicting leases, operating agreements, private claims or other future obligations or conditions which may affect all or any portion of the leased Tract, it shall not relieve the Lessee of the obligation to pay any bonus due thereon to the Louisiana State Mineral and Energy Board, nor shall the Louisiana State Mineral and Energy Board be obligated to refund any consideration paid by the Lessor prior to such modification, cancellation, or abrogation, including, but not limited to, bonuses, rentals and royalties.

NOTE: There shall be no grant of surface rights in and to the property. All surface rights shall be reserved to the St. Helena Parish Police Jury,

Bidder	Cash Payment	Price/Acre	Rental	Oil	Gas	Other

Applicant: TEXAS PETROLEUM INVESTMENT COMPANY to Agency and by Resolution from the St. Helena Parish Police Jury authorizing the Mineral Board to act in its behalf

Legend  
13090001  
DRG24000





**TRACT 43496 - Jefferson Davis Parish, Louisiana**

A certain Tract of land, excluding the beds and bottoms of all navigable waters, belonging to and not presently under mineral lease from Louisiana Agricultural Finance Authority on September 11, 2013, being more fully described as follows: All lands belonging to Louisiana Agricultural Finance Authority lying in Sections 25 and 26, Township 9 South, Range 6 West, Jefferson Davis Parish, Louisiana. Commence at the Northeast Corner of Section 26, Township 9 South, Range 6 West, thence South 0 degrees 23 minutes 39 seconds East a distance of 30 feet, thence South 89 degrees 41 minutes 45 seconds West a distance of 1331.15 feet, thence South 0 degrees 22 minutes 6 seconds East a distance of 1,525.37 feet for the point of beginning, thence South 89 degrees 50 minutes 15 seconds East a distance of 6631.00 feet to a point on the East line of Section 25, Township 9 South, Range 6 West, thence along said line South 0 degrees 23 minutes 28 seconds East a distance of 1313.835 feet, thence North 89 degrees 50 minutes 15 seconds West a distance of 6,631.52 feet, thence North 0 degrees 22 minutes 6 seconds West a distance of 1313.93 feet to the point of beginning, containing **200.00 acres**, all as more particularly outlined on a plat on file in the Office of Mineral Resources, Department of Natural Resources. The description is based on information provided by the State Agency regarding location and ownership of surface and mineral rights. All bearings, distances and coordinates, if applicable, are based on Louisiana Coordinate System of 1927, (North or South Zone).

NOTE: The above description of the Tract nominated for lease has been provided and corrected, where required, exclusively by the nomination party. Any mineral lease selected from this Tract and awarded by the Louisiana State Mineral and Energy Board shall be without warranty of any kind, either express, implied, or statutory, including, but not limited to, the implied warranties of merchantability and fitness for a particular purpose. Should the mineral lease awarded by the Louisiana State Mineral and Energy Board be subsequently modified, cancelled or abrogated due to the existence of conflicting leases, operating agreements, private claims or other future obligations or conditions which may affect all or any portion of the leased Tract, it shall not relieve the Lessee of the obligation to pay any bonus due thereon to the Louisiana State Mineral and Energy Board, nor shall the Louisiana State Mineral and Energy Board be obligated to refund any consideration paid by the Lessor prior to such modification, cancellation, or abrogation, including, but not limited to, bonuses, rentals and royalties.

NOTE: There shall be no drilling or surface operations (including particularly geophysical operations) on the lands vested in the Louisiana Agricultural Finance Authority.

NOTE: Lessee or any assignee shall be required to obtain consent from the Louisiana Agricultural Finance Authority prior to the execution of any assignment, sublease or other transfer.

NOTE: Lessee shall at all times comply with all applicable environmental and wetlands laws and regulations promulgated by the federal government, the State of Louisiana and/or any department office or agency thereof and Lessee shall obtain all licenses and/or permits required under such laws and regulations.

Applicant: REAGAN ENERGY SERVICES, L.L.C. to Agency and by Resolution from the Louisiana Agricultural Finance Authority authorizing the Mineral Board to act in its behalf

Bidder	Cash Payment	Price/Acre	Rental	Oil	Gas	Other

**Legend**  
13090082  
DRG24000

