

TRACT 43512 - Bossier and Webster Parishes, Louisiana

All lands now or formerly constituting the beds and bottoms of water bodies of whatever description and nature owned by the State of Louisiana and located within the geographical boundaries of the Bayou Bodcau Reservoir Project, and not presently under mineral lease by the State of Louisiana as of October 9, 2013, the area being set forth as follows: Beginning at a point having Coordinates of X = 1,677,153.00 and Y = 853,434.00; thence East 11,932.00 feet to a point having Coordinates of X = 1,689,085.00 and Y = 853,434.00; thence South 1,273.28 feet to a point having Coordinates of X = 1,689,085.00 and Y = 852,160.72; thence Westerly approximately 171 feet to a point on the boundary of Judgment Area No. 12952; thence along the boundary of said Judgment Area No. 12952 the following courses and distances: Westerly approximately 1,334 feet, Southerly approximately 1,271 feet, Westerly approximately 1,329 feet, Southerly approximately 1,274 feet, Westerly approximately 1,324 feet, Southerly approximately 3,936 feet, Westerly approximately 1,315 feet, Southerly approximately 1,332 feet, Easterly approximately 2,624 feet, Northerly approximately 2,660 feet and Easterly approximately 1,317 feet; thence Northerly approximately 2,603 feet, Easterly approximately 1,324 feet and Easterly approximately 227 feet to the point having Coordinates of X = 1,689,085.00 and Y = 849,612.03; thence South 11,986.03 feet to a point having Coordinates of X = 1,689,085.00 and Y = 837,626.00; thence Westerly approximately 358 feet to a point on the boundary of said Judgment Area No. 12952; thence along the boundary of said Judgment Area No. 12952 the following courses and distances: Westerly approximately 2,606 feet and Southerly approximately 1,512 feet to the point of intersection with an East West line having a Coordinate of Y = 836,123.00; thence West approximately 1,283 feet to a point having Coordinates of X = 1,684,822.47 and Y = 836,123.00; thence Northerly approximately 1,517 feet to a point on the boundary of said Judgment Area No. 12952; thence along the boundary of said Judgment Area No. 12952 the following courses and distances: Northerly approximately 4,024 feet, Westerly approximately 1,308 feet and Southerly approximately 4,015 feet; thence Southerly approximately 1,522 feet to a point having Coordinates of X = 1,683,514.06 and Y = 836,123.00; thence West 6,361.06 feet to a point having Coordinates of X = 1,677,153.00 and Y = 836,123.00; thence North 17,311.00 feet to the point of beginning, containing approximately **30 acres**, all as more particularly outlined on a plat on file in the Office of Mineral Resources, Department of Natural Resources. All bearings, distances and coordinates are based on Louisiana Coordinate System of 1927, (North or South Zone).

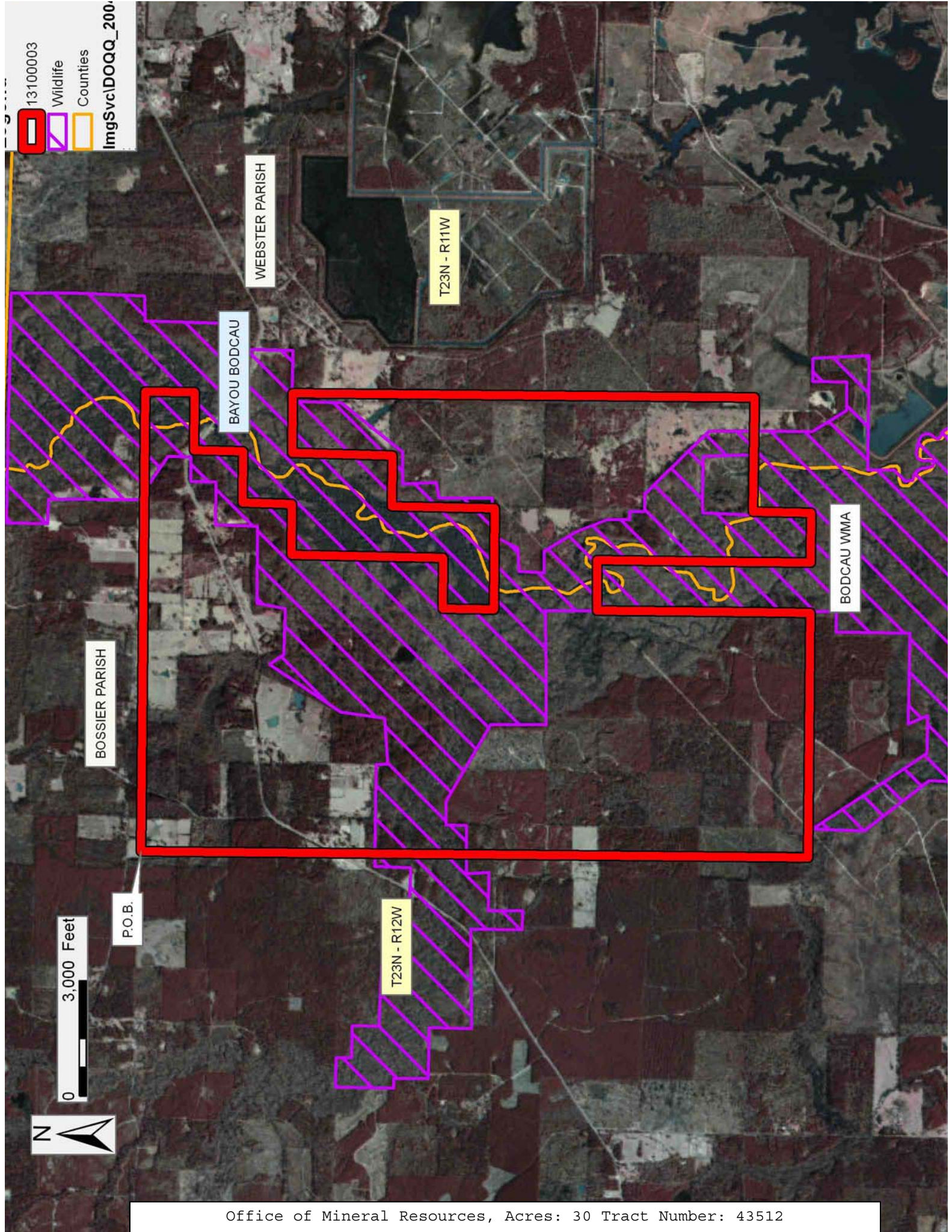
NOTE: The above description of the Tract nominated for lease has been provided and corrected, where required, exclusively by the nomination party. Any mineral lease selected from this Tract and awarded by the Louisiana State Mineral and Energy Board shall be without warranty of any kind, either express, implied, or statutory, including, but not limited to, the implied warranties of merchantability and fitness for a particular purpose. Should the mineral lease awarded by the Louisiana State Mineral and Energy Board be subsequently modified, cancelled or abrogated due to

the existence of conflicting leases, operating agreements, private claims or other future obligations or conditions which may affect all or any portion of the leased Tract, it shall not relieve the Lessee of the obligation to pay any bonus due thereon to the Louisiana State Mineral and Energy Board, nor shall the Louisiana State Mineral and Energy Board be obligated to refund any consideration paid by the Lessor prior to such modification, cancellation, or abrogation, including, but not limited to, bonuses, rentals and royalties.

NOTE: No surface activities will be allowed without written authorization of the Louisiana Department of Wildlife and Fisheries.

Applicant: EILRAHC OPERATING

Bidder	Cash Payment	Price/ Acre	Rental	Oil	Gas	Other



TRACT 43513 - Bossier and Webster Parishes, Louisiana

All lands now or formerly constituting the beds and bottoms of water bodies of whatever description and nature owned by the State of Louisiana and located within the geographical boundaries of the Bayou Bodcau Reservoir Project, and not presently under mineral lease by the State of Louisiana as of October 9, 2013, the area being set forth as follows: Beginning at a point having Coordinates of X = 1,684,671.00 and Y = 836,123.00; thence East approximately 1,434 feet to a point on the boundary of Judgment Area No. 12952 having a Coordinate of Y = 836,123.00; thence along the boundary of said Judgment Area No. 12952 the following courses and distances: Southerly approximately 12 feet, Easterly approximately 2,614 feet and Northerly approximately 15 feet to the point of intersection with an East West line having a Coordinate Y = 836,123.00; thence East approximately 7,609 feet to a point having Coordinates of X = 1,696,329.00 and Y = 836,123.00; thence South 11,570.00 feet to a point having Coordinates of X = 1,696,329.00 and Y = 824,553.00; thence Southerly approximately 185 feet to a point on the boundary of said Judgment Area No. 12952; thence along the boundary of said Judgment Area No. 12952 the following courses and distances: Southerly approximately 1,317 feet, Easterly approximately 2,681 feet and Northerly approximately 1,314 feet; thence Easterly approximately 2,028 feet to a point having Coordinates of X = 1,701,062.00 and Y = 824,373.00; thence South 2,939.00 feet to a point having Coordinates of X = 1,701,062.00 and Y = 821,434.00; thence West 8,804.00 feet to a point having Coordinates of X = 1,692,258.00 and Y = 821,434.00; thence North approximately 1,609 feet to a point on the boundary of said Judgment Area No. 12952 having a Coordinate of X = 1,692,258.00; thence along the boundary of said Judgment Area No. 12952 the following courses and distances: Easterly approximately 1,339 feet, Southerly approximately 1,321 feet, Easterly approximately 1,336 feet, Northerly approximately 1,315 feet, Westerly approximately 1,340 feet, Northerly approximately 1,500 feet and Westerly approximately 1,351 feet; thence Westerly approximately 108 feet to a point having Coordinates of X = 1,692,202.00 and Y = 824,540.00; thence West 7,531.00 feet to a point having Coordinates of X = 1,684,671.00 and Y = 824,540.00; thence North 11,583.00 feet to the point of beginning, containing approximately **37 acres**, all as more particularly outlined on a plat on file in the Office of Mineral Resources, Department of Natural Resources. All bearings, distances and coordinates are based on Louisiana Coordinate System of 1927, (North or South Zone).

NOTE: The above description of the Tract nominated for lease has been provided and corrected, where required, exclusively by the nomination party. Any mineral lease selected from this Tract and awarded by the Louisiana State Mineral and Energy Board shall be without warranty of any kind, either express, implied, or statutory, including, but not limited to, the implied warranties of merchantability and fitness for a particular purpose. Should the mineral lease awarded by the Louisiana State Mineral and Energy Board be subsequently modified, cancelled or abrogated due to the existence of conflicting leases, operating agreements, private claims

or other future obligations or conditions which may affect all or any portion of the leased Tract, it shall not relieve the Lessee of the obligation to pay any bonus due thereon to the Louisiana State Mineral and Energy Board, nor shall the Louisiana State Mineral and Energy Board be obligated to refund any consideration paid by the Lessor prior to such modification, cancellation, or abrogation, including, but not limited to, bonuses, rentals and royalties.

NOTE: No surface activities will be allowed without written authorization of the Louisiana Department of Wildlife and Fisheries.

Applicant: EILRAHC OPERATING

Bidder	Cash Payment	Price/ Acre	Rental	Oil	Gas	Other

1310000:

Wildlife

Counties

DOQQ2004

0

3,000 Feet

N

P.O.B.

BOSSIER PARISH

T23N - R11W

WEBSTER PARISH

BODCAU WMA

BAYOU BODCAU

T22N - R11W

Office of Mineral Resources, Acres: 37 Tract Number: 43513

TRACT 43514 - Bossier and Webster Parishes, Louisiana

All lands now or formerly constituting the beds and bottoms of water bodies of whatever description and nature owned by the State of Louisiana and located within the geographical boundaries of the Bayou Bodcau Reservoir Project, and not presently under mineral lease by the State of Louisiana as of October 9, 2013, the area being set forth as follows: Beginning at a point having Coordinates of X = 1,694,752.00 and Y = 821,434.00; thence East 9,744.00 feet to a point having Coordinates of X = 1,704,496.00 and Y = 821,434.00; thence South 10,130.00 feet to a point having Coordinates of X = 1,704,496.00 and Y = 811,304.00; thence West 5,666.00 feet to a point having Coordinates of X = 1,698,830.00 and Y = 811,304.00; thence North approximately 1,061 feet to a point on the boundary of Judgment Area No. 12952 having a Coordinate of X = 1,698,830.00; thence along the boundary of said Judgment Area No. 12952 the following courses and distances: Easterly approximately 1,445 feet, Northerly approximately 1,341 feet, Westerly approximately 1,457 feet and Southerly approximately 688 feet to the point of intersection with an East West line having a Coordinate of Y = 813,021.00; thence West approximately 4,070 feet to a point having Coordinates of X = 1,694,752.00 and Y = 813,021.00; thence North 8,413.00 feet to the point of beginning, containing approximately **29 acres**, all as more particularly outlined on a plat on file in the Office of Mineral Resources, Department of Natural Resources. All bearings, distances and coordinates are based on Louisiana Coordinate System of 1927, (North or South Zone).

NOTE: The above description of the Tract nominated for lease has been provided and corrected, where required, exclusively by the nomination party. Any mineral lease selected from this Tract and awarded by the Louisiana State Mineral and Energy Board shall be without warranty of any kind, either express, implied, or statutory, including, but not limited to, the implied warranties of merchantability and fitness for a particular purpose. Should the mineral lease awarded by the Louisiana State Mineral and Energy Board be subsequently modified, cancelled or abrogated due to the existence of conflicting leases, operating agreements, private claims or other future obligations or conditions which may affect all or any portion of the leased Tract, it shall not relieve the Lessee of the obligation to pay any bonus due thereon to the Louisiana State Mineral and Energy Board, nor shall the Louisiana State Mineral and Energy Board be obligated to refund any consideration paid by the Lessor prior to such modification, cancellation, or abrogation, including, but not limited to, bonuses, rentals and royalties.

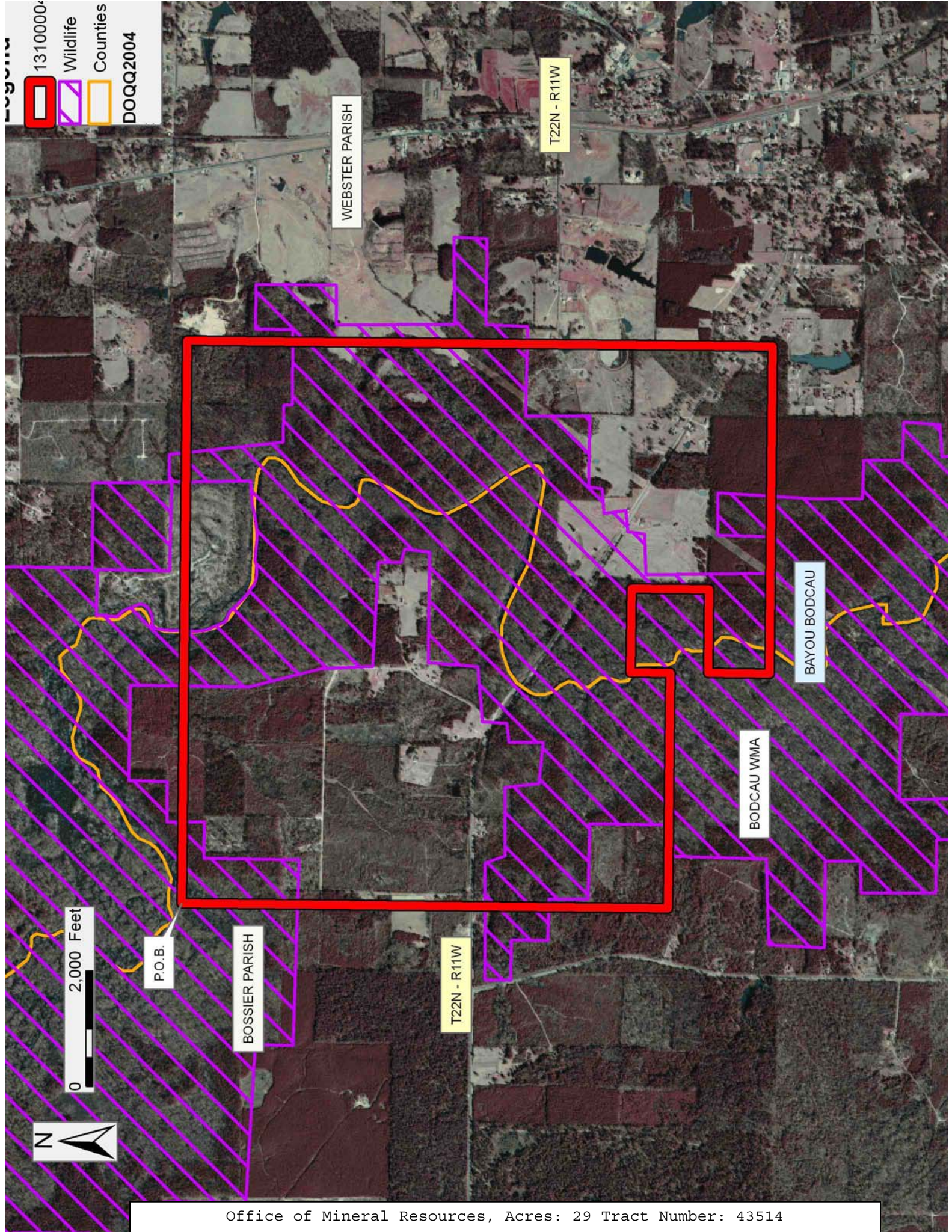
NOTE: No surface activities will be allowed without written authorization of the Louisiana Department of Wildlife and Fisheries.

Applicant: EILRAHC OPERATING

Bidder	Cash Payment	Price/ Acre	Rental	Oil	Gas	Other

Legend

- 13100004
- Wildlife
- Counties
- DOQQ2004



TRACT 43515 - Caddo and De Soto Parishes, Louisiana

All of the lands now or formerly constituting the beds and bottoms of all water bodies of every nature and description as to which title is vested in the State of Louisiana, together with all islands arising therein and other lands formed by accretion or by reliction, where allowed by law, excepting tax adjudicated lands, and not presently under mineral lease on October 9, 2013, situated in Caddo and De Soto Parishes, Louisiana, and more particularly described as follows: Beginning at a point on the boundaries of State Lease No. 18371 and State Lease No. 20356, having Coordinates of X = 1,620,230.24 and Y = 605,376.80; thence along the boundary of said State Lease No. 20356 the following courses and distances: South 89 degrees 03 minutes 49 seconds East 461.42 feet to a point having Coordinates of X = 1,620,691.60 and Y = 605,369.26 and South 89 degrees 03 minutes 49 seconds East 4,391.69 feet to its Southeast corner, also being a Western corner of State Lease No. 19929, having Coordinates of X = 1,625,082.70 and Y = 605,297.50; thence continue South 89 degrees 03 minutes 49 seconds East 10.24 feet along said State Lease No. 19929 to a point being the Northwest corner of State Lease No. 20800 having Coordinates of X = 1,625,092.94 and Y = 605,297.33; thence along the boundary of said State Lease No. 20800 the following courses and distances: South 00 degrees 40 minutes 19 seconds West 3,422.41 feet to a point having Coordinates of X = 1,625,052.81 and Y = 601,875.16 and South 09 degrees 26 minutes 41 seconds East 1,755.60 feet to a point on the North boundary of said State Lease No. 18371 having Coordinates of X = 1,625,340.90 and Y = 600,143.36; thence along the boundary of said State Lease No. 18371 the following courses and distances: North 89 degrees 16 minutes 30 seconds West 5,173.61 feet to a point having Coordinates of X = 1,620,167.70 and Y = 600,208.82 and North 00 degrees 41 minutes 36 seconds East 5,168.36 feet to the point of beginning, containing approximately **362.825 acres**, all as more particularly outlined on a plat on file in the Office of Mineral Resources, Department of Natural Resources. All bearings, distances and coordinates are based on Louisiana Coordinate System of 1927, (North or South Zone), where applicable.

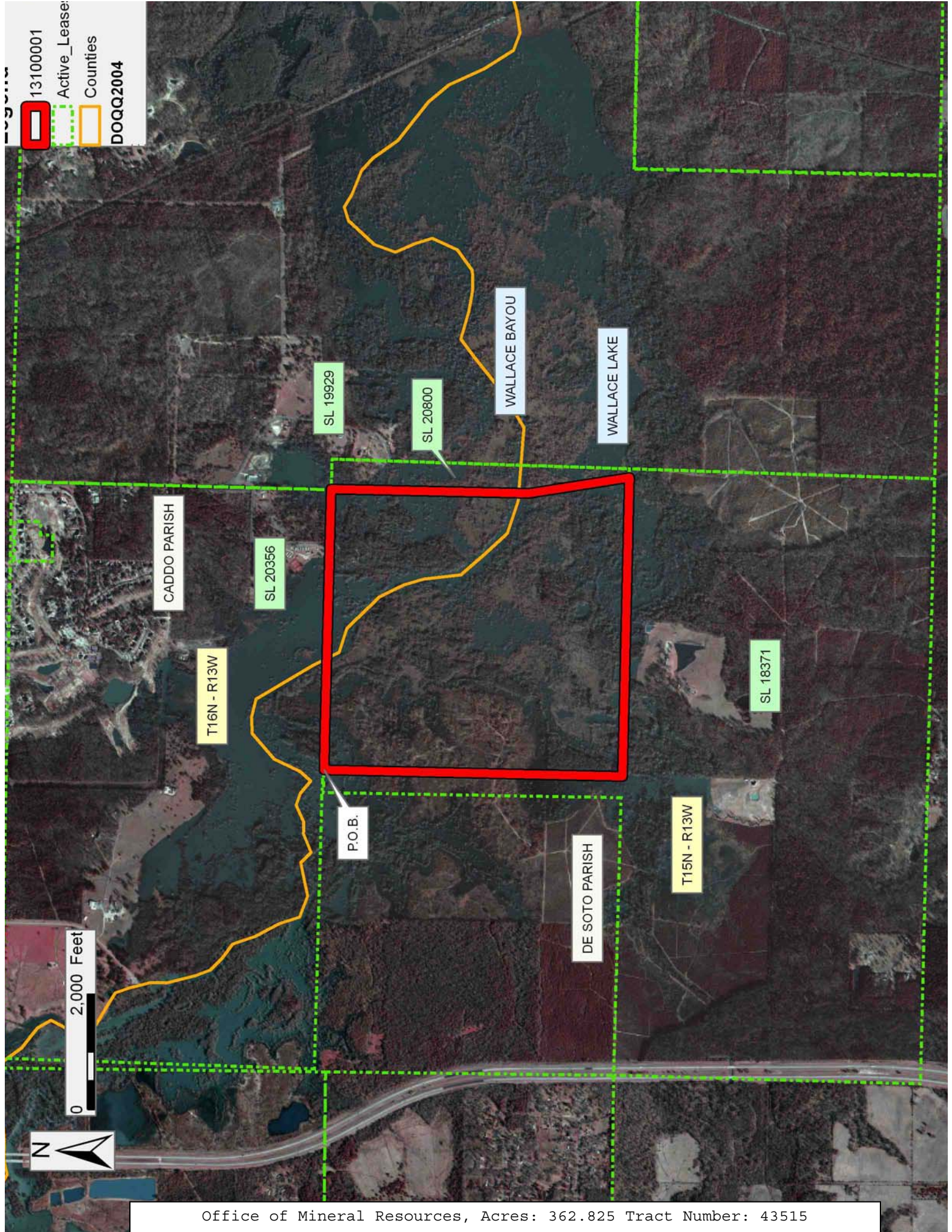
NOTE: The above description of the Tract nominated for lease has been provided and corrected, where required, exclusively by the nomination party. Any mineral lease selected from this Tract and awarded by the Louisiana State Mineral and Energy Board shall be without warranty of any kind, either express, implied, or statutory, including, but not limited to, the implied warranties of merchantability and fitness for a particular purpose. Should the mineral lease awarded by the Louisiana State Mineral and Energy Board be subsequently modified, cancelled or abrogated due to the existence of conflicting leases, operating agreements, private claims or other future obligations or conditions which may affect all or any portion of the leased Tract, it shall not relieve the Lessee of the obligation to pay any bonus due thereon to the Louisiana State Mineral and Energy Board, nor shall the Louisiana State Mineral and Energy Board be obligated to refund any consideration paid by the Lessor prior to such

modification, cancellation, or abrogation, including, but not limited to, bonuses, rentals and royalties.

NOTE: The Office of Mineral Resources will require a minimum bonus of \$1000 per acre and a minimum royalty of 25%.

Applicant: STAFF OFFICE OF MINERAL RESOURCES

Bidder	Cash Payment	Price/ Acre	Rental	Oil	Gas	Other



TRACT 43516 - Cameron Parish, Louisiana

All of the lands now or formerly constituting the beds and bottoms of all water bodies of every nature and description the title of which vests in the State of Louisiana, together with all islands arising therein and other lands formed by accretion or by reliction, where allowed by law, excepting tax adjudicated lands, and not presently under mineral lease on October 9, 2013, situated in Cameron Parish, Louisiana, and more particularly described as follows: Beginning at a point having Coordinates of X = 1,221,527.59 and Y = 485,511.52; thence East 11,984.62 feet to a point having Coordinates of X = 1,233,512.21 and Y = 485,511.52; thence South 9,661.52 feet to a point having Coordinates of X = 1,233,512.21 and Y = 475,850.00; thence West 11,984.62 feet to a point having Coordinates of X = 1,221,527.59 and Y = 475,850.00; thence North 9,661.52 feet to the point of beginning, containing approximately **2,277 acres, LESS AND EXCEPT** that portion thereof, if any, located West of the boundary line between the States of Texas and Louisiana as determined by the report of the Special Master and adjudicated by the Supreme Court of the United States in litigation styled **Texas v. Louisiana, et al No. 36 Original**, or as otherwise approved by said court, all as more particularly outlined on a plat on file in the Office of Mineral Resources, Department of Natural Resources. All bearings, distances and coordinates are based on Louisiana Coordinate System of 1927, (North or South Zone), where applicable.

NOTE: The above description of the Tract nominated for lease has been provided and corrected, where required, exclusively by the nomination party. Any mineral lease selected from this Tract and awarded by the Louisiana State Mineral and Energy Board shall be without warranty of any kind, either express, implied, or statutory, including, but not limited to, the implied warranties of merchantability and fitness for a particular purpose. Should the mineral lease awarded by the Louisiana State Mineral and Energy Board be subsequently modified, cancelled or abrogated due to the existence of conflicting leases, operating agreements, private claims or other future obligations or conditions which may affect all or any portion of the leased Tract, it shall not relieve the Lessee of the obligation to pay any bonus due thereon to the Louisiana State Mineral and Energy Board, nor shall the Louisiana State Mineral and Energy Board be obligated to refund any consideration paid by the Lessor prior to such modification, cancellation, or abrogation, including, but not limited to, bonuses, rentals and royalties.

NOTE: The State of Louisiana does hereby reserve, and this lease shall be subject to, the imprescriptible right of surface use in the nature of a servitude in favor of the Department of Natural Resources, including its Offices and Commissions, for the sole purpose of implementing, constructing, servicing and maintaining approved coastal zone management and/or restoration projects. Utilization of any and all rights derived under this lease by the mineral lessee, its agents, successors or assigns, shall not interfere with nor hinder the reasonable surface use by the

Department of Natural Resources, its Offices or Commissions, as herein above reserved.

NOTE: This tract is located in an area designated by the Louisiana Legislature or the Wildlife and Fisheries Commission as a Public Oyster Seed Ground, Reservation, or area of Calcasieu or Sabine Lake. Proposed projects occurring in these areas will be evaluated on a case by case basis by Louisiana Department of Wildlife & Fisheries. Modifications to proposed project features including, but not limited to, access routes, well sites, flowlines, and appurtenant structures maybe required by the Louisiana Department of Wildlife and Fisheries. In addition, compensatory mitigation will be required to offset unavoidable habitat impacts.

Applicant: THEOPHILUS OIL, GAS & LAND SERVICES, LLC

Bidder	Cash Payment	Price/ Acre	Rental	Oil	Gas	Other

Legend

13100009
DOQQ2008

CAMERON PARISH

T13S - R14W

SABINE LAKE

P.O.B.



N



0 3,000 Feet

TRACT 43517 - Lafourche and St. Charles Parishes, Louisiana

All of the lands now or formerly constituting the beds and bottoms of all water bodies of every nature and description as to which title is vested in the State of Louisiana, together with all islands arising therein and other lands formed by accretion or by reliction, where allowed by law, excepting tax adjudicated lands, and not presently under mineral lease on October 9, 2013, situated in Lafourche and St. Charles Parishes, Louisiana, and more particularly described as follows: Beginning at a point having Coordinates of X = 2,338,135.00 and Y = 389,103.31; thence North 87 degrees 42 minutes 11 seconds East 10,769.91 feet to a point having Coordinates of X = 2,348,896.26 and Y = 389,534.93; thence South 00 degrees 19 minutes 47 seconds East 16,235.20 feet to a point having Coordinates of X = 2,348,989.65 and Y = 373,300.00; thence West 3,479.65 feet to the Southeast corner of State Lease No. 19232 having Coordinates of X = 2,345,510.00 and Y = 373,300.00; thence North 7,622.61 feet along the East boundary of said State Lease No. 19232 to the Southeast corner of State Lease No. 19204 having Coordinates of X = 2,345,510.00 and Y = 380,922.61; thence continue North 1,023.13 feet along the East boundary of said State Lease No. 19204 to its Northeast corner also being the Southeast corner of State Lease No. 19203 having Coordinates of X = 2,345,510.00 and Y = 381,945.74; thence continue North 1,807.05 feet along the East boundary of said State Lease No. 19203 to its Northeast corner also a point on the East boundary of said State Lease No. 19232 having Coordinates of X = 2,345,510.00 and Y = 383,752.79; thence along the boundaries of said State Lease No. 19232 the following courses: North 1,355.21 feet to a point having Coordinates of X = 2,345,510.00 and Y = 385,108.00 and West 6,418.50 feet to the East corner of State Lease No. 19207 having Coordinates of X = 2,339,091.50 and Y = 385,108.00; thence continue West 956.50 feet along the North boundary of said State Lease No. 19207 to its Northwest corner also being the Northeast corner of State Lease No. 19199 having Coordinates of X = 2,338,135.00 and Y = 385,108.00; thence North 3,995.31 feet to the point of beginning, **LESS AND EXCEPT** all that portion of State Lease No. 20854 which lies entirely within the above described tract, being more fully described as follows: Commencing at a point being the point of beginning of the above described tract having Coordinates of X = 2,338,135.00 and Y = 389,103.31; thence South 76 degrees 15 minutes 07 seconds East 5,936.91 feet to a point having Coordinates of X = 2,343,901.81 and Y = 387,692.38, being the point of beginning of said State Lease No. 20854; thence South 89 degrees 37 minutes 16 seconds East 2,964.40 feet to a point having Coordinates of X = 2,346,866.15 and Y = 387,672.78; thence South 00 degrees 12 minutes 31 seconds East 2,307.78 feet to a point having Coordinates of X = 2,346,874.54 and Y = 385,365.01; thence North 89 degrees 21 minutes 50 seconds West 2,963.11 feet to a point having Coordinates of X = 2,343,911.61 and Y = 385,397.91; thence North 00 degrees 14 minutes 41 seconds West 2,294.49 feet to a point of beginning, the nominated tract containing approximately **1819.12 acres**, all as more particularly outlined on a plat on file in the Office of Mineral Resources, Department of Natural Resources. All bearings, distances and coordinates are based on

Louisiana Coordinate System of 1927, (North or South Zone), where applicable.

NOTE: The above description of the Tract nominated for lease has been provided and corrected, where required, exclusively by the nomination party. Any mineral lease selected from this Tract and awarded by the Louisiana State Mineral and Energy Board shall be without warranty of any kind, either express, implied, or statutory, including, but not limited to, the implied warranties of merchantability and fitness for a particular purpose. Should the mineral lease awarded by the Louisiana State Mineral and Energy Board be subsequently modified, cancelled or abrogated due to the existence of conflicting leases, operating agreements, private claims or other future obligations or conditions which may affect all or any portion of the leased Tract, it shall not relieve the Lessee of the obligation to pay any bonus due thereon to the Louisiana State Mineral and Energy Board, nor shall the Louisiana State Mineral and Energy Board be obligated to refund any consideration paid by the Lessor prior to such modification, cancellation, or abrogation, including, but not limited to, bonuses, rentals and royalties.

NOTE: The State of Louisiana does hereby reserve, and this lease shall be subject to, the imprescriptible right of surface use in the nature of a servitude in favor of the Department of Natural Resources, including its Offices and Commissions, for the sole purpose of implementing, constructing, servicing and maintaining approved coastal zone management and/or restoration projects. Utilization of any and all rights derived under this lease by the mineral lessee, its agents, successors or assigns, shall not interfere with nor hinder the reasonable surface use by the Department of Natural Resources, its Offices or Commissions, as herein above reserved.

Applicant: SOUTHLAND OIL PROPERTIES, INC.

Bidder	Cash Payment	Price/ Acre	Rental	Oil	Gas	Other

Legend

13100012

Active_Leases

ST CHARLES PARISH

LAKE SALVADOR

LAFOURCHE



TRACT 43518 - St. Charles Parish, Louisiana

All of the lands now or formerly constituting the beds and bottoms of all water bodies of every nature and description as to which title is vested in the State of Louisiana, together with all islands arising therein and other lands formed by accretion or by reliction, where allowed by law, excepting tax adjudicated lands, and not presently under mineral lease on October 9, 2013, situated in St. Charles Parish, Louisiana, and more particularly described as follows: Beginning at a point having Coordinates of X = 2,327,273.03 and Y = 388,667.65; thence North 87 degrees 42 minutes 11 seconds East 10,870.71 feet to a point having Coordinates of X = 2,338,135.00 and Y = 389,103.31; thence South 3,995.31 feet to the Northwest corner of State Lease No. 19207, also being the Northeast corner of State Lease No. 19199 having Coordinates of X = 2,338,135.00 and Y = 385,108.00; thence along the boundaries of said State Lease No. 19199 the following courses: West 1,832.35 feet to a point having Coordinates of X = 2,336,302.65 and Y = 385,108.00, South 16 degrees 44 minutes 09 seconds East 858.03 feet to a point having Coordinates of X = 2,336,549.73 and Y = 384,286.31, and North 72 degrees 05 minutes 07 seconds East 1,666.05 feet to its Southeast corner having Coordinates of X = 2,338,135.00 and Y = 384,798.79, said point also being a point on the Western boundary of State Lease No. 19232; thence South 1,400.37 feet along the Western boundary of said State Lease No. 19232 to a point being the Northeast corner of State Lease No. 20624 having Coordinates of X = 2,338,135.00 and Y = 383,398.42; thence along the boundaries of said State Lease No. 20624 the following courses: South 80 degrees 34 minutes 29 seconds West 2,164.22 feet to a point having Coordinates of X = 2,336,000.00 and Y = 383,044.00, South 12 degrees 33 minutes 41 seconds West 2,299.03 feet to a point having Coordinates of X = 2,335,500.00 and Y = 380,800.00, South 73 degrees 04 minutes 21 seconds East 2,404.16 feet to a point having Coordinates of X = 2,337,800.00 and Y = 380,100.00, and North 88 degrees 53 minutes 16 seconds East 335.06 feet to its Southeast corner, also being a point on the Western boundary of said State Lease No. 19232 having Coordinates of X = 2,338,135.00 and Y = 380,106.51; thence South 441.28 feet along the Western boundary of said State Lease No. 19232 to a point being the Northwest corner of State Lease No. 19206, also being the Northeast corner of State Lease No. 19200 having Coordinates of X = 2,338,135.00 and Y = 379,665.23; thence along the boundaries of said State Lease No. 19200 the following courses: North 85 degrees 57 minutes 27 seconds West 236.05 feet to a point having Coordinates of X = 2,337,899.54 and Y = 379,681.87, and South 03 degrees 56 minutes 50 seconds West 1,134.56 feet to a point being the Northeast corner of State Lease No. 20851 having Coordinates of X = 2,337,821.44 and Y = 378,550.00; thence West 2,623.62 feet along the North boundary of said State Lease No. 20851 to its Northwest corner also being a point on the East boundary of State Lease No. 19201 having Coordinates of X = 2,335,197.82 and Y = 378,550.00; thence along the boundaries of said State Lease No. 19201 the following courses: North 20 degrees 42 minutes 16 seconds West 1,880.44 feet to a point having Coordinates of X = 2,334,533.00 and Y = 380,309.00, and South 71 degrees 21 minutes 39 seconds West 1,720.23 feet to a point on the East boundary of State Lease

No. 20852 having Coordinates of X = 2,332,903.00 and Y = 379,759.20; thence North 743.80 feet to a point having Coordinates of X = 2,332,903.00 and Y = 380,503.00, and West 1,838.95 feet to a point on the East boundary of State Lease No. 20626 having Coordinates of X = 2,331,064.05 and Y = 380,503.00; thence North 00 degrees 52 minutes 42 seconds West 2,820.39 feet along the East boundary of said State Lease No. 20626 to its Northeast corner, also being a point on the South boundary of State Lease No. 20853 having Coordinates of X = 2,331,020.82 and Y = 383,323.06; thence along the boundaries of said State Lease No. 20853 the following courses: North 80 degrees 42 minutes 32 seconds East 845.27 feet to a point having Coordinates of X = 2,331,855.00 and Y = 383,459.53, North 1,906.47 feet to a point having Coordinates of X = 2,331,855.00 and Y = 385,366.00, West 2,213.00 feet to a point having Coordinates of X = 2,329,642.00 and Y = 385,366.00, and South 2,268.51 feet to its Southwest corner, also being a point on the North boundary of said State Lease No. 20626 having Coordinates of X = 2,329,642.00 and Y = 383,097.49; thence South 80 degrees 42 minutes 32 seconds West 2,400.47 feet to a point having Coordinates of X = 2,327,273.03 and Y = 382,709.93; thence North 5,957.72 feet to the point of beginning containing, approximately **1746.75 acres**, all as more particularly outlined on a plat on file in the Office of Mineral Resources, Department of Natural Resources. All bearings, distances and coordinates are based on Louisiana Coordinate System of 1927, (North or South Zone), where applicable.

NOTE: The above description of the Tract nominated for lease has been provided and corrected, where required, exclusively by the nomination party. Any mineral lease selected from this Tract and awarded by the Louisiana State Mineral and Energy Board shall be without warranty of any kind, either express, implied, or statutory, including, but not limited to, the implied warranties of merchantability and fitness for a particular purpose. Should the mineral lease awarded by the Louisiana State Mineral and Energy Board be subsequently modified, cancelled or abrogated due to the existence of conflicting leases, operating agreements, private claims or other future obligations or conditions which may affect all or any portion of the leased Tract, it shall not relieve the Lessee of the obligation to pay any bonus due thereon to the Louisiana State Mineral and Energy Board, nor shall the Louisiana State Mineral and Energy Board be obligated to refund any consideration paid by the Lessor prior to such modification, cancellation, or abrogation, including, but not limited to, bonuses, rentals and royalties.

NOTE: The State of Louisiana does hereby reserve, and this lease shall be subject to, the imprescriptible right of surface use in the nature of a servitude in favor of the Department of Natural Resources, including its Offices and Commissions, for the sole purpose of implementing, constructing, servicing and maintaining approved coastal zone management and/or restoration projects. Utilization of any and all rights derived under this lease by the mineral lessee, its agents, successors or assigns, shall not interfere with nor hinder the reasonable surface use by the

Department of Natural Resources, its Offices or Commissions, as herein above reserved.

Applicant: SOUTHLAND OIL PROPERTIES, INC.

Bidder	Cash Payment	Price/ Acre	Rental	Oil	Gas	Other

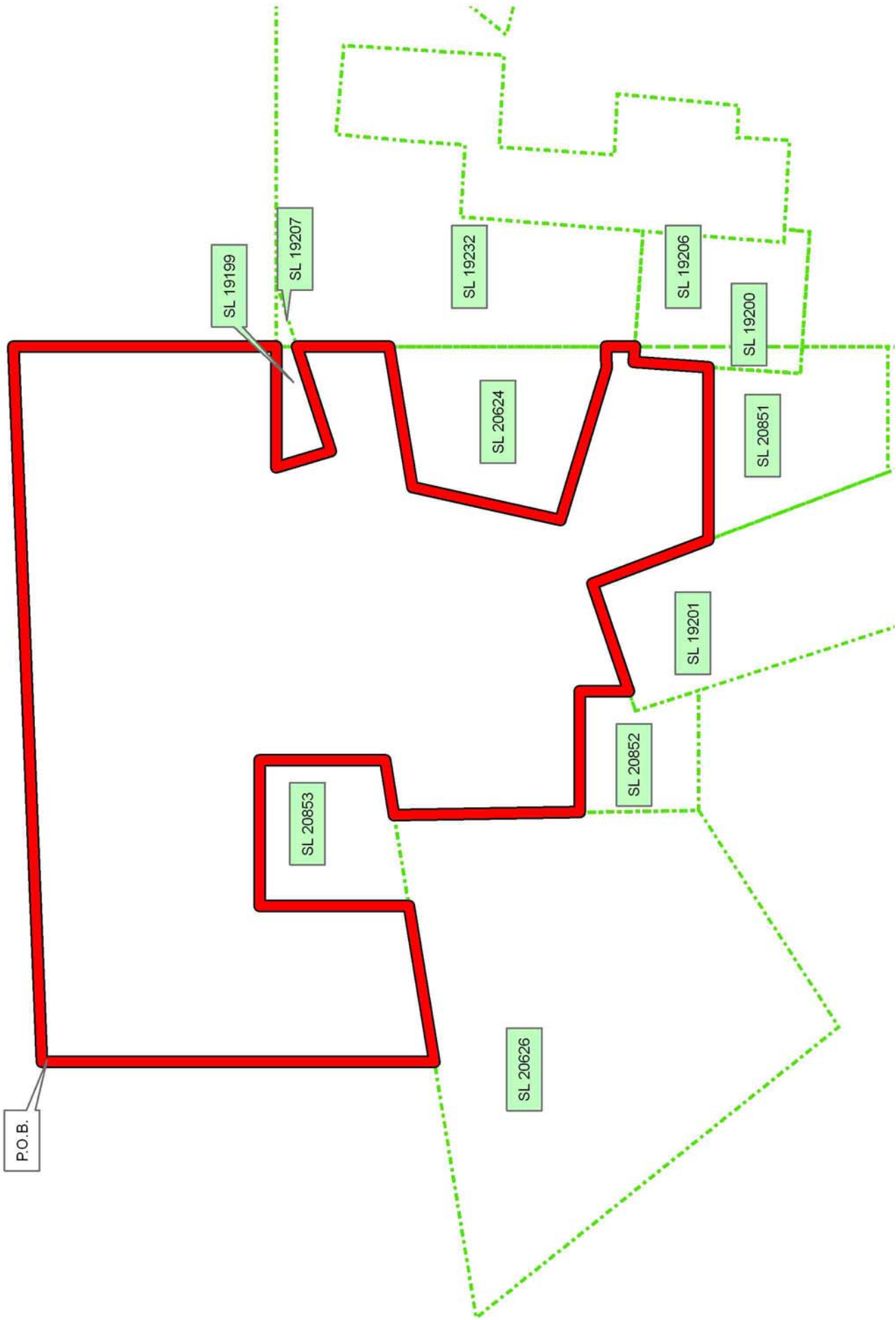
Legend

13100011

Active_Leases

ST CHARLES PARISH

LAKE SALVADOR



TRACT 43519 - St. Charles Parish, Louisiana

All of the lands now or formerly constituting the beds and bottoms of all water bodies of every nature and description as to which title is vested in the State of Louisiana, together with all islands arising therein and other lands formed by accretion or by reliction, where allowed by law, excepting tax adjudicated lands, and not presently under mineral lease on October 9, 2013, situated in St. Charles Parish, Louisiana, and more particularly described as follows: Beginning at a point having Coordinates of X = 2,320,876.93 and Y = 388,411.11; thence North 87 degrees 42 minutes 11 seconds East 6,401.24 feet to a point having Coordinates of X = 2,327,273.03 and Y = 388,667.65; thence South 5,957.72 feet to a point on the North boundary of State Lease No. 20626 having Coordinates of X = 2,327,273.03 and Y = 382,709.93; thence South 80 degrees 42 minutes 32 seconds West 3,936.42 feet to a point on the East boundary of State Lease No. 21183 having Coordinates of X = 2,323,388.25 and Y = 382,074.39; thence along the boundaries of said State Lease No. 21183 the following courses: North 1,707.61 feet to a point having Coordinates of X = 2,323,388.25 and Y = 383,782.00, West 5,556.25 feet to a point having Coordinates of X = 2,317,832.00 and Y = 383,782.00 and South 2,216.25 feet to a point on the North boundary of State Lease No. 20850 having Coordinates of X = 2,317,832.00 and Y = 381,565.75; thence West 1,127.74 feet along the North boundary of said State Lease No. 20850 to the Northeast corner of State Lease No. 21058 having Coordinates of X = 2,316,704.26 and Y = 381,565.75; thence continue West 3,746.63 feet along the boundary of said State Lease No. 21058 to its Northwest corner having Coordinates of X = 2,312,957.63 and Y = 381,565.75; thence North 2,532.79 feet to a point having Coordinates of X = 2,312,957.63 and Y = 384,098.54; thence East 79.60 feet to a point having Coordinates of X = 2,313,037.23 and Y = 384,098.54; thence North 61 degrees 11 minutes 06 seconds East 8,947.58 feet to the point of beginning, containing approximately **1516.12 acres**, all as more particularly outlined on a plat on file in the Office of Mineral Resources, Department of Natural Resources. All bearings, distances and coordinates are based on Louisiana Coordinate System of 1927, (North or South Zone), where applicable.

NOTE: The above description of the Tract nominated for lease has been provided and corrected, where required, exclusively by the nomination party. Any mineral lease selected from this Tract and awarded by the Louisiana State Mineral and Energy Board shall be without warranty of any kind, either express, implied, or statutory, including, but not limited to, the implied warranties of merchantability and fitness for a particular purpose. Should the mineral lease awarded by the Louisiana State Mineral and Energy Board be subsequently modified, cancelled or abrogated due to the existence of conflicting leases, operating agreements, private claims or other future obligations or conditions which may affect all or any portion of the leased Tract, it shall not relieve the Lessee of the obligation to pay any bonus due thereon to the Louisiana State Mineral and Energy Board, nor shall the Louisiana State Mineral and Energy Board be obligated to refund any consideration paid by the Lessor prior to such

modification, cancellation, or abrogation, including, but not limited to, bonuses, rentals and royalties.

NOTE: The State of Louisiana does hereby reserve, and this lease shall be subject to, the imprescriptible right of surface use in the nature of a servitude in favor of the Department of Natural Resources, including its Offices and Commissions, for the sole purpose of implementing, constructing, servicing and maintaining approved coastal zone management and/or restoration projects. Utilization of any and all rights derived under this lease by the mineral lessee, its agents, successors or assigns, shall not interfere with nor hinder the reasonable surface use by the Department of Natural Resources, its Offices or Commissions, as herein above reserved.

Applicant: SOUTHLAND OIL PROPERTIES, INC.

Bidder	Cash Payment	Price/ Acre	Rental	Oil	Gas	Other

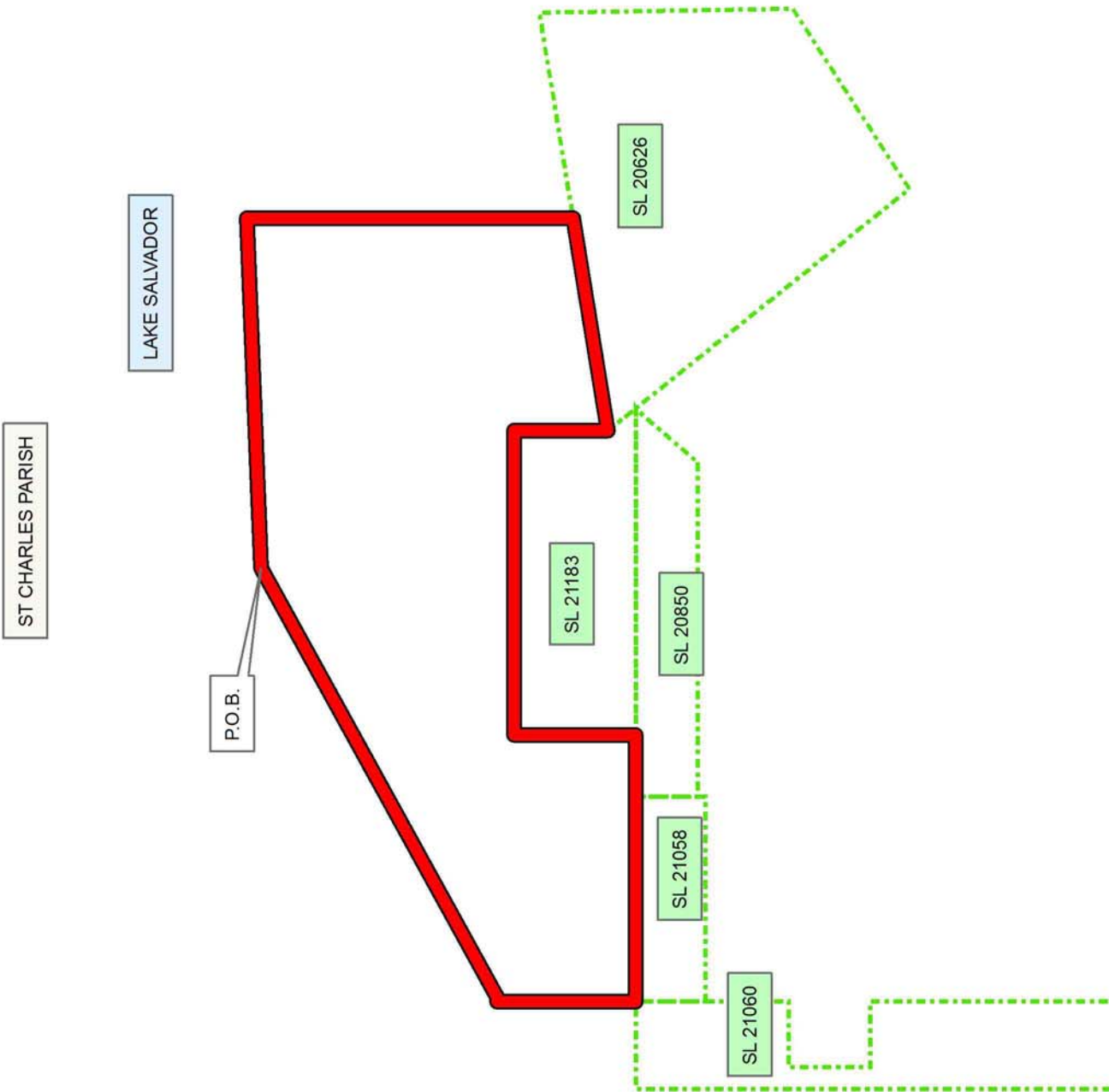


0 3,000 Feet

Legend

13100010

Active_Leases



TRACT 43520 - Lafourche and St. Charles Parishes, Louisiana

All of the lands now or formerly constituting the beds and bottoms of all water bodies of every nature and description as to which title is vested in the State of Louisiana, together with all islands arising therein and other lands formed by accretion or by reliction, where allowed by law, excepting tax adjudicated lands, and not presently under mineral lease on October 9, 2013, situated in Lafourche and St. Charles Parishes, Louisiana, and more particularly described as follows: Beginning at the Southwest corner of State Lease No. 21065 having Coordinates of X = 2,335,391.67 and Y = 371,002.00; thence East 1,701.33 feet along the boundary of said State Lease No. 21065 to its Southeast corner and the Southwest corner of State Lease No. 19201 having Coordinates of X = 2,337,093.00 and Y = 371,002.00; thence along the boundary of said State Lease No. 19201 the following courses and distances: North 73 degrees 38 minutes 34 seconds East 898.36 feet to its Southeast corner having Coordinates of X = 2,337,955.00 and Y = 371,255.00 and North 20 degrees 42 minutes 16 seconds West 4,884.45 feet to the Southwest corner of State Lease No. 20851 having Coordinates of X = 2,336,228.13 and Y = 375,824.00; thence East 1,906.87 feet along the boundary of said State Lease No. 20851 to its Southeast corner and a point on the boundary of State Lease No. 19232 having Coordinates of X = 2,338,135.00 and Y = 375,824.00; thence along the boundary of said State Lease No. 19232 the following courses and distances: South 2,524.00 feet to its Southwest corner having Coordinates of X = 2,338,135.00 and Y = 373,300.00 and East 7,375.00 feet to its Southeast corner having Coordinates of X = 2,345,510.00 and Y = 373,300.00; thence East 3,479.65 feet to a point having Coordinates of X = 2,348,989.65 and Y = 373,300.00; thence South 7,300.00 feet to a point having Coordinates of X = 2,348,989.65 and Y = 366,000.00; thence West 13,597.98 feet to a point having Coordinates of X = 2,335,391.67 and Y = 366,000.00; thence North 5,002.00 feet to the point of beginning, containing approximately **2,247.09 acres**, all as more particularly outlined on a plat on file in the Office of Mineral Resources, Department of Natural Resources. All bearings, distances and coordinates are based on Louisiana Coordinate System of 1927, (North or South Zone), where applicable.

NOTE: The above description of the Tract nominated for lease has been provided and corrected, where required, exclusively by the nomination party. Any mineral lease selected from this Tract and awarded by the Louisiana State Mineral and Energy Board shall be without warranty of any kind, either express, implied, or statutory, including, but not limited to, the implied warranties of merchantability and fitness for a particular purpose. Should the mineral lease awarded by the Louisiana State Mineral and Energy Board be subsequently modified, cancelled or abrogated due to the existence of conflicting leases, operating agreements, private claims or other future obligations or conditions which may affect all or any portion of the leased Tract, it shall not relieve the Lessee of the obligation to pay any bonus due thereon to the Louisiana State Mineral and Energy Board, nor shall the Louisiana State Mineral and Energy Board be

obligated to refund any consideration paid by the Lessor prior to such modification, cancellation, or abrogation, including, but not limited to, bonuses, rentals and royalties.

NOTE: The State of Louisiana does hereby reserve, and this lease shall be subject to, the imprescriptible right of surface use in the nature of a servitude in favor of the Department of Natural Resources, including its Offices and Commissions, for the sole purpose of implementing, constructing, servicing and maintaining approved coastal zone management and/or restoration projects. Utilization of any and all rights derived under this lease by the mineral lessee, its agents, successors or assigns, shall not interfere with nor hinder the reasonable surface use by the Department of Natural Resources, its Offices or Commissions, as herein above reserved.

Applicant: SOUTHLAND OIL PROPERTIES, INC.

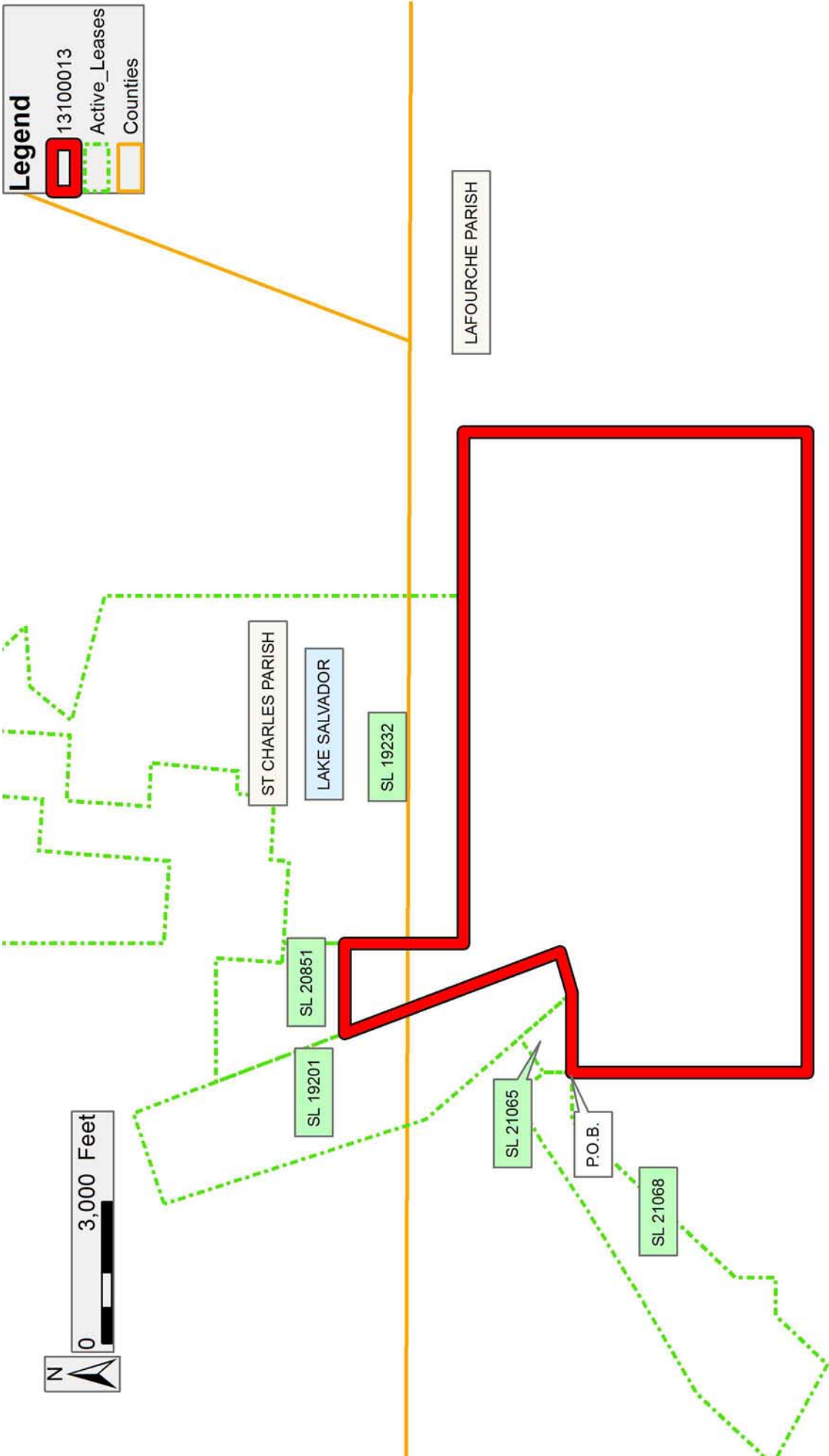
Bidder	Cash Payment	Price/ Acre	Rental	Oil	Gas	Other

Legend

13100013

Active_Leases

Counties



TRACT 43521 - Lafourche Parish, Louisiana

All of the lands now or formerly constituting the beds and bottoms of all water bodies of every nature and description as to which title is vested in the State of Louisiana, together with all islands arising therein and other lands formed by accretion or by reliction, where allowed by law, excepting tax adjudicated lands, and not presently under mineral lease on October 9, 2013, situated in Lafourche Parish, Louisiana, and more particularly described as follows: Beginning at the Southwest corner of State Lease No. 20877 having Coordinates of X = 2,321,250.00 and Y = 366,684.26; thence along the boundaries of said State Lease No. 20877 the following courses: East 1,633.10 feet to a point having Coordinates of X = 2,322,883.10 and Y = 366,684.26, North 2,784.89 feet to a point having Coordinates of X = 2,322,883.10 and Y = 369,469.15 and East 3,382.25 feet to the most North Southwest corner of State Lease No. 20858 having Coordinates of X = 2,326,265.35 and Y = 369,469.15; thence along the boundaries of said State Lease No. 20858 the following courses: continue East 899.35 feet to a point having Coordinates of X = 2,327,164.70 and Y = 369,469.15 and South 2,620.62 feet to the Northwest corner of State Lease No. 21068 having Coordinates of X = 2,327,164.70 and Y = 366,848.53; thence along the boundaries of said State Lease No. 21068 the following courses and distances: continue South 164.27 feet to a point having Coordinates of X = 2,327,164.70 and Y = 366,684.26, South 61 degrees 23 minutes 15 seconds East 2,305.90 feet, North 43 degrees 25 minutes 50 seconds East 1,520.58 feet, East 798.29 feet, North 843.26 feet, North 43 degrees 25 minutes 50 seconds East 4,650.86 feet, North 59 degrees 08 minutes 47 seconds East 189.12 feet and East 999.31 feet to its Northernmost Southeast corner having Coordinates of X = 2,335,391.67 and Y = 371,002.00; thence South 11,166.21 feet to the Southernmost Northeast corner of State Lease No. 21069 having Coordinates of X = 2,335,391.67 and Y = 359,835.79; thence along the boundary of said State Lease No. 21069 the following courses and distances: North 66 degrees 13 minutes 50 seconds West 1,771.98 feet, North 80 degrees 16 minutes 21 seconds West 1,065.32 feet, North 46 degrees 19 minutes 56 seconds West 1,824.83 feet, North 34 degrees 00 minutes 13 seconds East 1,519.90 feet, North 58 degrees 32 minutes 31 seconds West 4,771.27 feet, South 36 degrees 33 minutes 09 seconds West 1,444.02 feet, North 66 degrees 36 minutes 53 seconds West 1,209.34 feet, South 45 degrees 00 minutes 00 seconds West 1,071.73 feet, South 00 degrees 23 minutes 13 seconds East 522.41 feet, South 56 degrees 20 minutes 21 seconds East 10,445.68 feet and North 73 degrees 18 minutes 03 seconds East 1,296.34 feet to its Southeast corner having Coordinates of X = 2,335,391.67 and Y = 358,362.50; thence South 3,134.29 feet to a point having Coordinates of X = 2,335,391.67 and Y = 355,228.21; thence North 89 degrees 59 minutes 59 seconds West 16,317.94 feet to a point being the Southeast corner of State Lease No. 21070 having Coordinates of X = 2,319,073.73 and Y = 355,228.27; thence along the boundary of said State Lease No. 21070 the following: North 01 degrees 40 minutes 00 seconds West 2,505.77 feet and West 387.85 feet to a point having Coordinates of X = 2,318,613.00 and Y = 357,732.98; thence North 8,637.02 feet to a point having Coordinates of X = 2,318,613.00 and Y =

366,370.00; thence West 1,663.00 feet to a point having Coordinates of X = 2,316,950.00 and Y = 366,370.00; thence North 456.42 feet to the Southeast corner of State Lease No. 20938 having Coordinates of X = 2,316,950.00 and Y = 366,826.42; thence along the boundaries of said State Lease No. 20938 the following courses: continue North 3,043.58 feet to a point having Coordinates of X = 2,316,950.00 and Y = 369,870.00 and East 4,300.00 feet to a point on the West boundary of said State Lease No. 20877 having Coordinates of X = 2,321,250.00 and Y = 369,870.00; thence South 3,185.74 feet along the West boundary of said State Lease No. 20877 to the point of beginning, (This lease includes only waterbottoms claimed and owned by the state and specifically excludes any School Indemnity land located within the above described tract), containing approximately **2,029 acres**, all as more particularly outlined on a plat on file in the Office of Mineral Resources, Department of Natural Resources. All bearings, distances and coordinates are based on Louisiana Coordinate System of 1927, (North or South Zone), where applicable.

NOTE: The above description of the Tract nominated for lease has been provided and corrected, where required, exclusively by the nomination party. Any mineral lease selected from this Tract and awarded by the Louisiana State Mineral and Energy Board shall be without warranty of any kind, either express, implied, or statutory, including, but not limited to, the implied warranties of merchantability and fitness for a particular purpose. Should the mineral lease awarded by the Louisiana State Mineral and Energy Board be subsequently modified, cancelled or abrogated due to the existence of conflicting leases, operating agreements, private claims or other future obligations or conditions which may affect all or any portion of the leased Tract, it shall not relieve the Lessee of the obligation to pay any bonus due thereon to the Louisiana State Mineral and Energy Board, nor shall the Louisiana State Mineral and Energy Board be obligated to refund any consideration paid by the Lessor prior to such modification, cancellation, or abrogation, including, but not limited to, bonuses, rentals and royalties.

NOTE: The State of Louisiana does hereby reserve, and this lease shall be subject to, the imprescriptible right of surface use in the nature of a servitude in favor of the Department of Natural Resources, including its Offices and Commissions, for the sole purpose of implementing, constructing, servicing and maintaining approved coastal zone management and/or restoration projects. Utilization of any and all rights derived under this lease by the mineral lessee, its agents, successors or assigns, shall not interfere with nor hinder the reasonable surface use by the Department of Natural Resources, its Offices or Commissions, as herein above reserved.

Applicant: SOUTHLAND OIL PROPERTIES, INC.

Bidder	Cash Payment	Price/ Acre	Rental	Oil	Gas	Other

Legend

13100015

Active_Leases

DOQQ2008

