

TRACT 43532 - Portion of Block 5, Grand Isle Area, Jefferson Parish, Louisiana

All of the lands now or formerly constituting the beds and bottoms of all water bodies of every nature and description as to which title is vested in the State of Louisiana, together with all islands arising therein and other lands formed by accretion or by reliction, where allowed by law, excepting tax adjudicated lands, and not presently under mineral lease on October 9, 2013, situated in Jefferson Parish, Louisiana, and more particularly described as follows: Beginning at the Southeast corner of Block 5, Grand Isle Area having Coordinates of X = 2,428,143.81 and Y = 200,293.43; thence along the boundary of said Block 5 the following courses: West 11,730.20 feet to a point having Coordinates of X = 2,416,413.61 and Y = 200,293.43; North 37 degrees 04 minutes 36 seconds East 47.09 feet to a point having Coordinates of X = 2,416,442.00 and Y = 200,331.00; North 49 degrees 22 minutes 33 seconds East 2,724.65 feet to a point having Coordinates of X = 2,418,510.00 and Y = 202,105.00; North 54 degrees 47 minutes 09 seconds East 5,578.93 feet to a point having Coordinates of X = 2,423,068.00 and Y = 205,322.00; North 58 degrees 03 minutes 13 seconds East 4,630.29 feet to a point having Coordinates of X = 2,426,997.00 and Y = 207,772.00; North 57 degrees 30 minutes 48 seconds East 1,359.56 feet to a point having Coordinates of X = 2,428,143.81 and Y = 208,502.22; and South 8,208.79 feet to the point of beginning, containing **1,172.33 acres**, all as more particularly outlined on a plat on file in the Office of Mineral Resources, Department of Natural Resources. All bearings, distances and coordinates are based on Louisiana Coordinate System of 1927, (North or South Zone), where applicable.

NOTE: The above description of the Tract nominated for lease has been provided and corrected, where required, exclusively by the nomination party. Any mineral lease selected from this Tract and awarded by the Louisiana State Mineral and Energy Board shall be without warranty of any kind, either express, implied, or statutory, including, but not limited to, the implied warranties of merchantability and fitness for a particular purpose. Should the mineral lease awarded by the Louisiana State Mineral and Energy Board be subsequently modified, cancelled or abrogated due to the existence of conflicting leases, operating agreements, private claims or other future obligations or conditions which may affect all or any portion of the leased Tract, it shall not relieve the Lessee of the obligation to pay any bonus due thereon to the Louisiana State Mineral and Energy Board, nor shall the Louisiana State Mineral and Energy Board be obligated to refund any consideration paid by the Lessor prior to such modification, cancellation, or abrogation, including, but not limited to, bonuses, rentals and royalties.

NOTE: The State of Louisiana does hereby reserve, and this lease shall be subject to, the imprescriptible right of surface use in the nature of a servitude in favor of the Department of Natural Resources, including its Offices and Commissions, for the sole purpose of implementing, constructing, servicing and maintaining approved coastal zone management

and/or restoration projects. Utilization of any and all rights derived under this lease by the mineral lessee, its agents, successors or assigns, shall not interfere with nor hinder the reasonable surface use by the Department of Natural Resources, its Offices or Commissions, as herein above reserved.

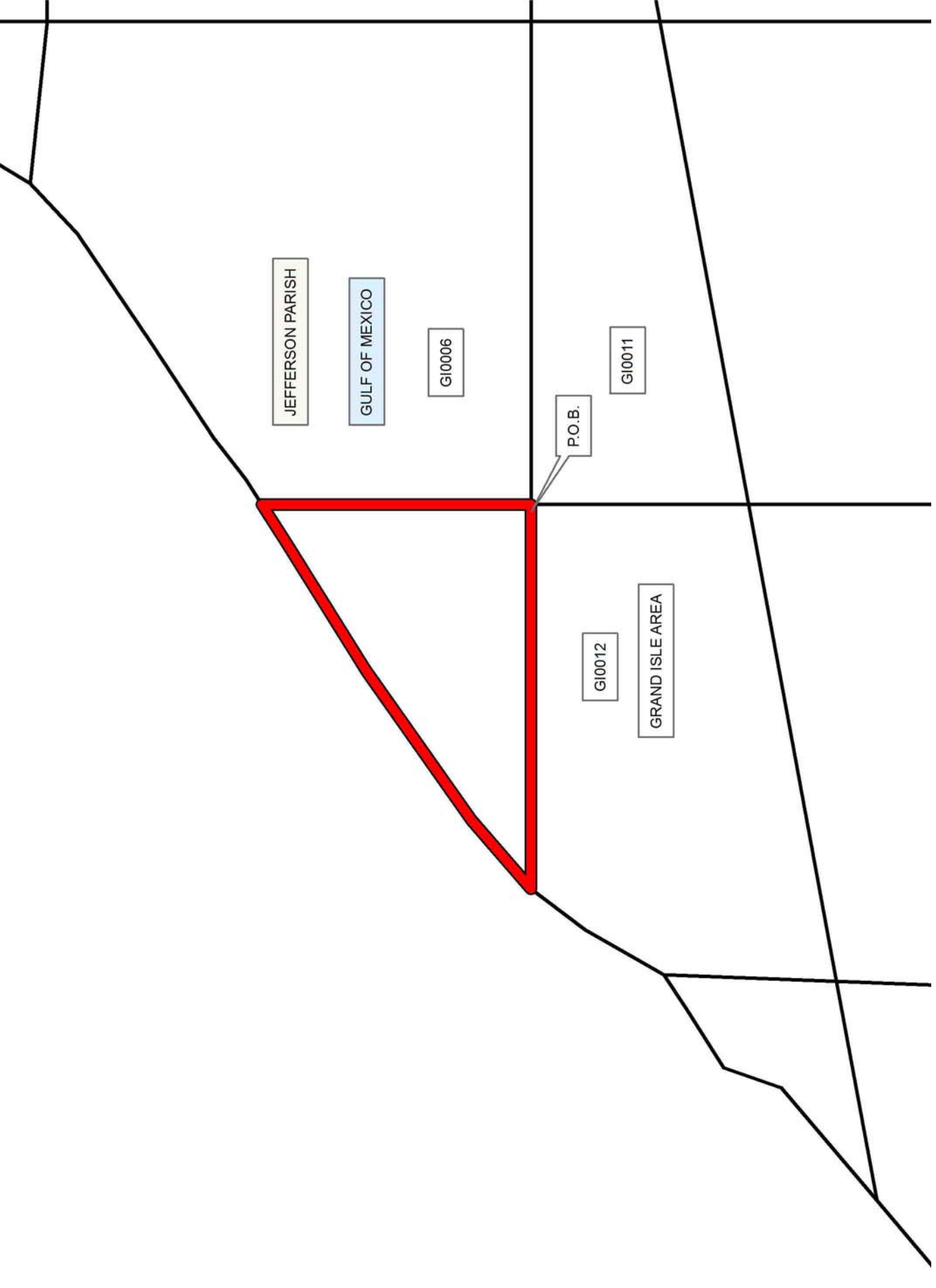
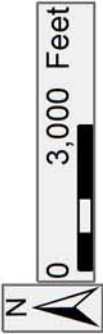
Applicant: BLANTON PETROLEUM CORP.

Bidder	Cash Payment	Price/Acre	Rental	Oil	Gas	Other

Legend

13100020

Blocks



TRACT 43533 - Portion of Blocks 8, and 9, Grand Isle Area, Plaquemines Parish, Louisiana

All of the lands now or formerly constituting the beds and bottoms of all water bodies of every nature and description as to which title is vested in the State of Louisiana, together with all islands arising therein and other lands formed by accretion or by reliction, where allowed by law, excepting tax adjudicated lands, and not presently under mineral lease on October 9, 2013, situated in Plaquemines Parish, Louisiana, and more particularly described as follows: Beginning at a point on the West line of Block 8, Grand Isle Area having Coordinates of X = 2,457,659.89 and Y = 207,823.02; thence East 14,758.04 feet to a point on the East line of said Block 8 having Coordinates of X = 2,472,417.93 and Y = 207,823.02; thence South 6,024.30 feet along the East line of said Block 8 to a point on the Louisiana Coastline, as decreed by the Supreme Court of the United States, as determined by a Special Master appointed therein, in litigation styled *United States v. State of Louisiana et al No. 9 Original*, in 1975, having Coordinates of X = 2,472,417.93 and Y = 201,798.72; thence Southwesterly on a straight line to a point on the North line of State Lease No. 797 having Coordinates of X = 2,464,242.83 and Y = 200,293.43; thence along the boundary of said State Lease No. 797 the following courses: West 830.60 feet to a point having Coordinates of X = 2,463,412.23 and Y = 200,293.43 and South 152.94 feet to a point on the said Coastline having Coordinates of X = 2,463,412.23 and Y = 200,140.49; thence Southwesterly on a straight line to a point on the West line of Block 9, Grand Isle Area having Coordinates of X = 2,457,659.89 and Y = 199,081.31; thence North 1,212.12 feet along the West line of said Block 9 to its Northwest corner, said corner also being the Southeast corner of said Block 8, having Coordinates of X = 2,457,659.89 and Y = 200,293.43; thence North 7,529.59 feet along the West line of said Block 8 to the point of beginning, containing **2,499.89 acres**, all as more particularly outlined on a plat on file in the Office of Mineral Resources, Department of Natural Resources. All bearings, distances and coordinates are based on Louisiana Coordinate System of 1927, (North or South Zone), where applicable.

NOTE: The above description of the Tract nominated for lease has been provided and corrected, where required, exclusively by the nomination party. Any mineral lease selected from this Tract and awarded by the Louisiana State Mineral and Energy Board shall be without warranty of any kind, either express, implied, or statutory, including, but not limited to, the implied warranties of merchantability and fitness for a particular purpose. Should the mineral lease awarded by the Louisiana State Mineral and Energy Board be subsequently modified, cancelled or abrogated due to the existence of conflicting leases, operating agreements, private claims or other future obligations or conditions which may affect all or any portion of the leased Tract, it shall not relieve the Lessee of the obligation to pay any bonus due thereon to the Louisiana State Mineral and Energy Board, nor shall the Louisiana State Mineral and Energy Board be obligated to refund any consideration paid by the Lessor prior to such

modification, cancellation, or abrogation, including, but not limited to, bonuses, rentals and royalties.

NOTE: The State of Louisiana does hereby reserve, and this lease shall be subject to, the imprescriptible right of surface use in the nature of a servitude in favor of the Department of Natural Resources, including its Offices and Commissions, for the sole purpose of implementing, constructing, servicing and maintaining approved coastal zone management and/or restoration projects. Utilization of any and all rights derived under this lease by the mineral lessee, its agents, successors or assigns, shall not interfere with nor hinder the reasonable surface use by the Department of Natural Resources, its Offices or Commissions, as herein above reserved.

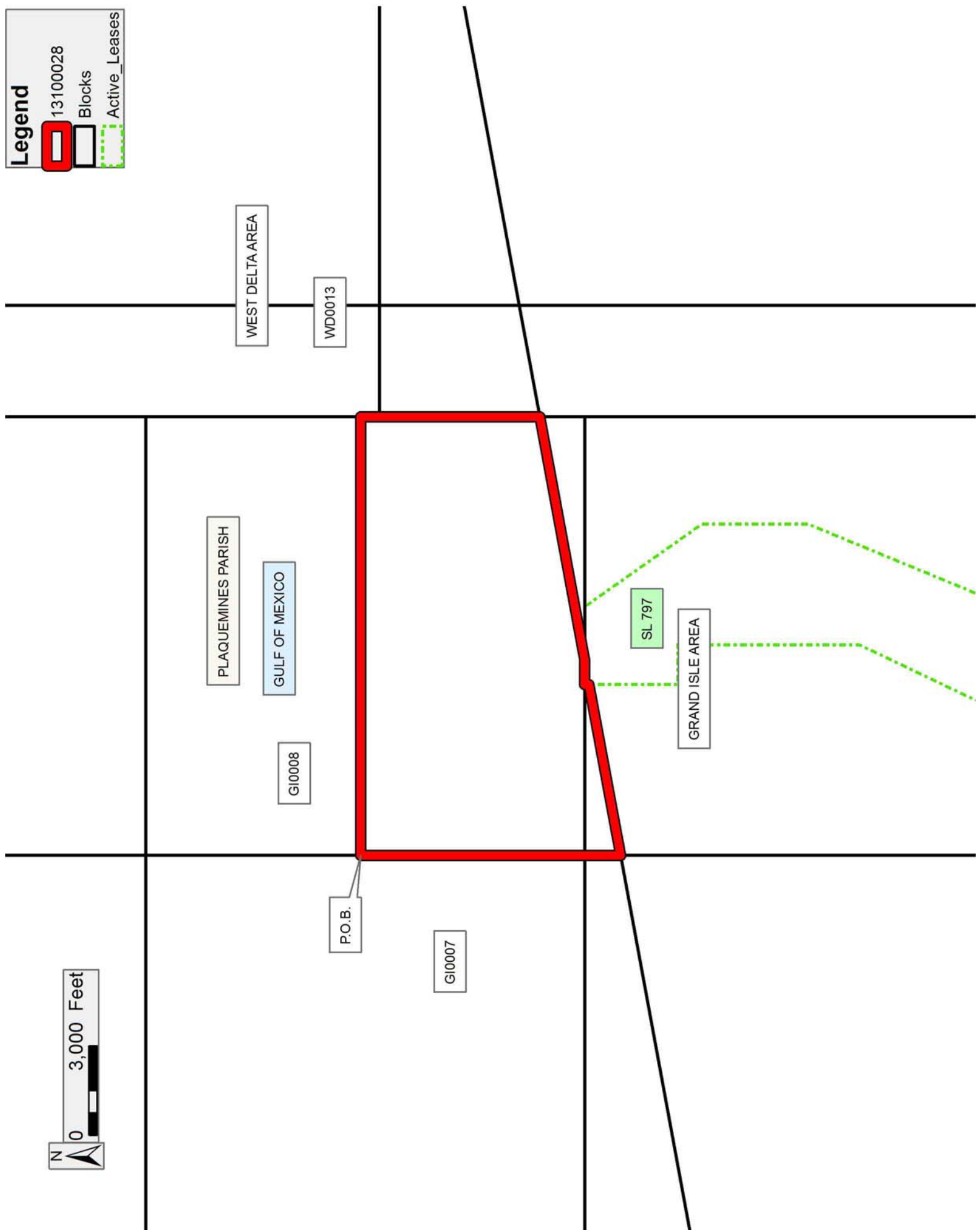
NOTE: It appears, according to our records, that a portion of this Tract is located within the restrictive safety fairway area as set out by the Corps of Engineers, U.S. Army and/or the restrictive anchorage area as set out by the U.S. Coast Guard.

Applicant: BLANTON PETROLEUM CORP.

Bidder	Cash Payment	Price/Acre	Rental	Oil	Gas	Other

Legend

-  13100028
-  Blocks
-  Active_Leases



TRACT 43534 - Portion of Block 6, Grand Isle Area, Jefferson Parish, Louisiana

All of the lands now or formerly constituting the beds and bottoms of all water bodies of every nature and description as to which title is vested in the State of Louisiana, together with all islands arising therein and other lands formed by accretion or by reliction, where allowed by law, excepting tax adjudicated lands, and not presently under mineral lease on October 9, 2013, situated in Jefferson Parish, Louisiana, and more particularly described as follows: Beginning at the Southeast corner of Block 6, Grand Isle Area having Coordinates of X = 2,442,901.85 and Y = 200,293.43; thence West 14,758.04 feet along the South line of said Block 6 to its Southwest corner having Coordinates of X = 2,428,143.81 and Y = 200,293.43; thence North 7,379.01 feet along the West line of said Block 6 to a point having Coordinates of X = 2,428,143.81 and Y = 207,672.44; thence East 14,758.04 feet to a point on the East line of said Block 6 having Coordinates of X = 2,442,901.85 and Y = 207,672.44; thence South 7,379.01 feet along the East line of said Block 6 to the point of beginning, containing **2,499.99 acres**, all as more particularly outlined on a plat on file in the Office of Mineral Resources, Department of Natural Resources. All bearings, distances and coordinates are based on Louisiana Coordinate System of 1927, (North or South Zone), where applicable.

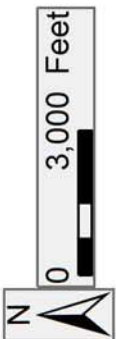
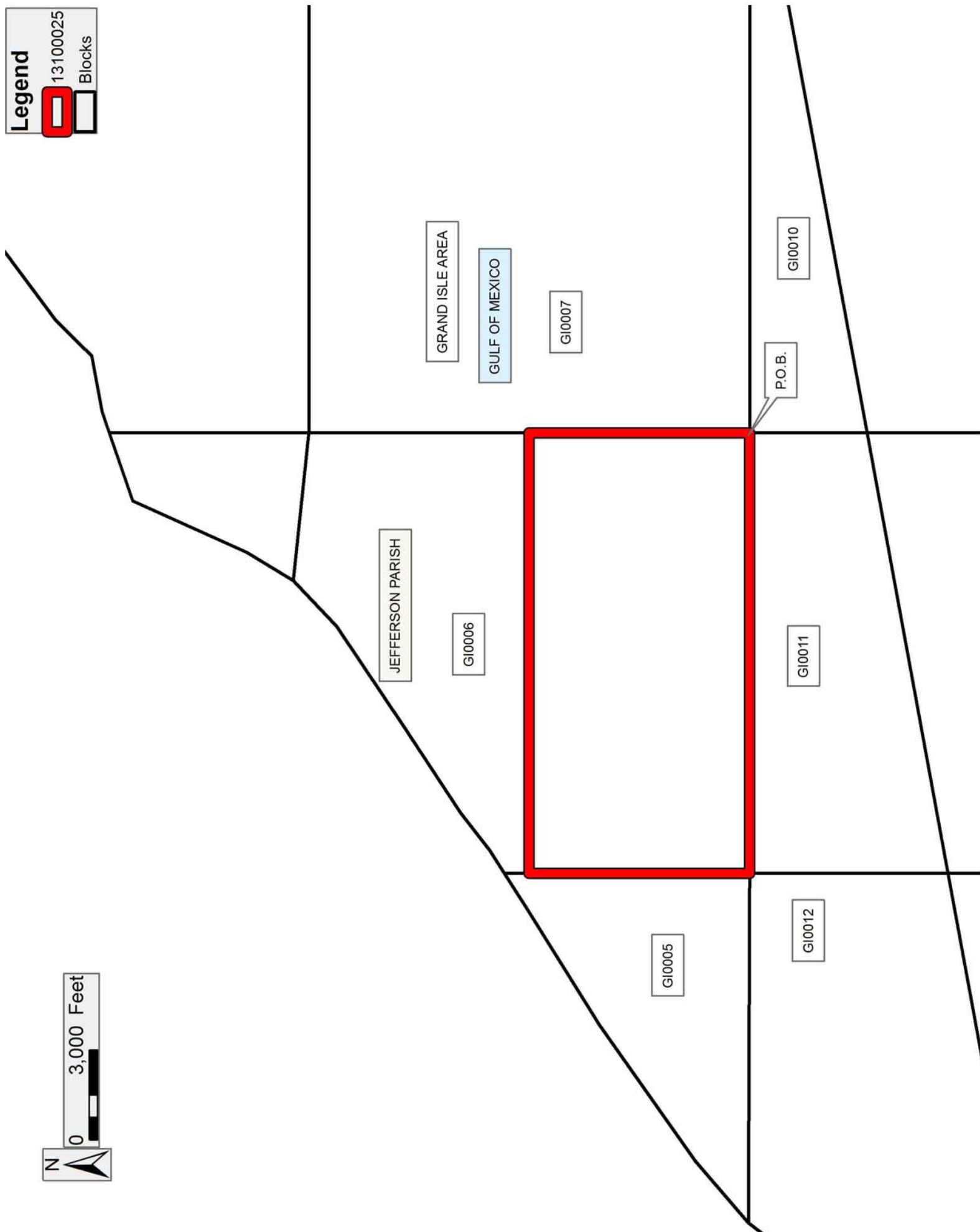
NOTE: The above description of the Tract nominated for lease has been provided and corrected, where required, exclusively by the nomination party. Any mineral lease selected from this Tract and awarded by the Louisiana State Mineral and Energy Board shall be without warranty of any kind, either express, implied, or statutory, including, but not limited to, the implied warranties of merchantability and fitness for a particular purpose. Should the mineral lease awarded by the Louisiana State Mineral and Energy Board be subsequently modified, cancelled or abrogated due to the existence of conflicting leases, operating agreements, private claims or other future obligations or conditions which may affect all or any portion of the leased Tract, it shall not relieve the Lessee of the obligation to pay any bonus due thereon to the Louisiana State Mineral and Energy Board, nor shall the Louisiana State Mineral and Energy Board be obligated to refund any consideration paid by the Lessor prior to such modification, cancellation, or abrogation, including, but not limited to, bonuses, rentals and royalties.

NOTE: The State of Louisiana does hereby reserve, and this lease shall be subject to, the imprescriptible right of surface use in the nature of a servitude in favor of the Department of Natural Resources, including its Offices and Commissions, for the sole purpose of implementing, constructing, servicing and maintaining approved coastal zone management and/or restoration projects. Utilization of any and all rights derived under this lease by the mineral lessee, its agents, successors or assigns, shall not interfere with nor hinder the reasonable surface use by the Department of Natural Resources, its Offices or Commissions, as herein above reserved.

Applicant: BLANTON PETROLEUM CORP.

Bidder	Cash Payment	Price/Acre	Rental	Oil	Gas	Other

Legend
13100025
Blocks



TRACT 43535 - Portion of Block 10, Grand Isle Area, Jefferson and Plaquemines Parishes, Louisiana

All of the lands now or formerly constituting the beds and bottoms of all water bodies of every nature and description as to which title is vested in the State of Louisiana, together with all islands arising therein and other lands formed by accretion or by reliction, where allowed by law, excepting tax adjudicated lands, and not presently under mineral lease on October 9, 2013, situated in Jefferson and Plaquemines Parishes, Louisiana, and more particularly described as follows: Beginning at the Northwest corner of Block 10, Grand Isle Area having Coordinates of X = 2,442,901.85 and Y = 200,293.43; thence East 14,758.04 feet along the North line of said Block 10 to its Northeast corner having Coordinates of X = 2,457,659.89 and Y = 200,293.43; thence South 1,212.13 feet along the East line of said Block 10 to a point on the Louisiana Coastline, as decreed by the Supreme Court of the United States, as determined by a Special Master appointed therein, in litigation styled *United States v. State of Louisiana et al No. 9 Original*, in 1975, having Coordinates of X = 2,457,659.89 and Y = 199,081.30; thence along said Coastline the following courses: Southwesterly on a straight line to a point having Coordinates of X = 2,456,651.87 and Y = 198,895.70; Southwesterly on a straight line to a point having Coordinates of X = 2,445,510.00 and Y = 196,844.13; and Southwesterly on a straight line to a point on the West line of said Block 10 having Coordinates of X = 2,442,901.85 and Y = 196,363.89; thence North 3,929.54 feet along the West line of said Block 10 to the point of beginning, containing **870.99 acres**, all as more particularly outlined on a plat on file in the Office of Mineral Resources, Department of Natural Resources. All bearings, distances and coordinates are based on Louisiana Coordinate System of 1927, (North or South Zone), where applicable.

NOTE: The above description of the Tract nominated for lease has been provided and corrected, where required, exclusively by the nomination party. Any mineral lease selected from this Tract and awarded by the Louisiana State Mineral and Energy Board shall be without warranty of any kind, either express, implied, or statutory, including, but not limited to, the implied warranties of merchantability and fitness for a particular purpose. Should the mineral lease awarded by the Louisiana State Mineral and Energy Board be subsequently modified, cancelled or abrogated due to the existence of conflicting leases, operating agreements, private claims or other future obligations or conditions which may affect all or any portion of the leased Tract, it shall not relieve the Lessee of the obligation to pay any bonus due thereon to the Louisiana State Mineral and Energy Board, nor shall the Louisiana State Mineral and Energy Board be obligated to refund any consideration paid by the Lessor prior to such modification, cancellation, or abrogation, including, but not limited to, bonuses, rentals and royalties.

NOTE: The State of Louisiana does hereby reserve, and this lease shall be subject to, the imprescriptible right of surface use in the nature of a

servitude in favor of the Department of Natural Resources, including its Offices and Commissions, for the sole purpose of implementing, constructing, servicing and maintaining approved coastal zone management and/or restoration projects. Utilization of any and all rights derived under this lease by the mineral lessee, its agents, successors or assigns, shall not interfere with nor hinder the reasonable surface use by the Department of Natural Resources, its Offices or Commissions, as herein above reserved.

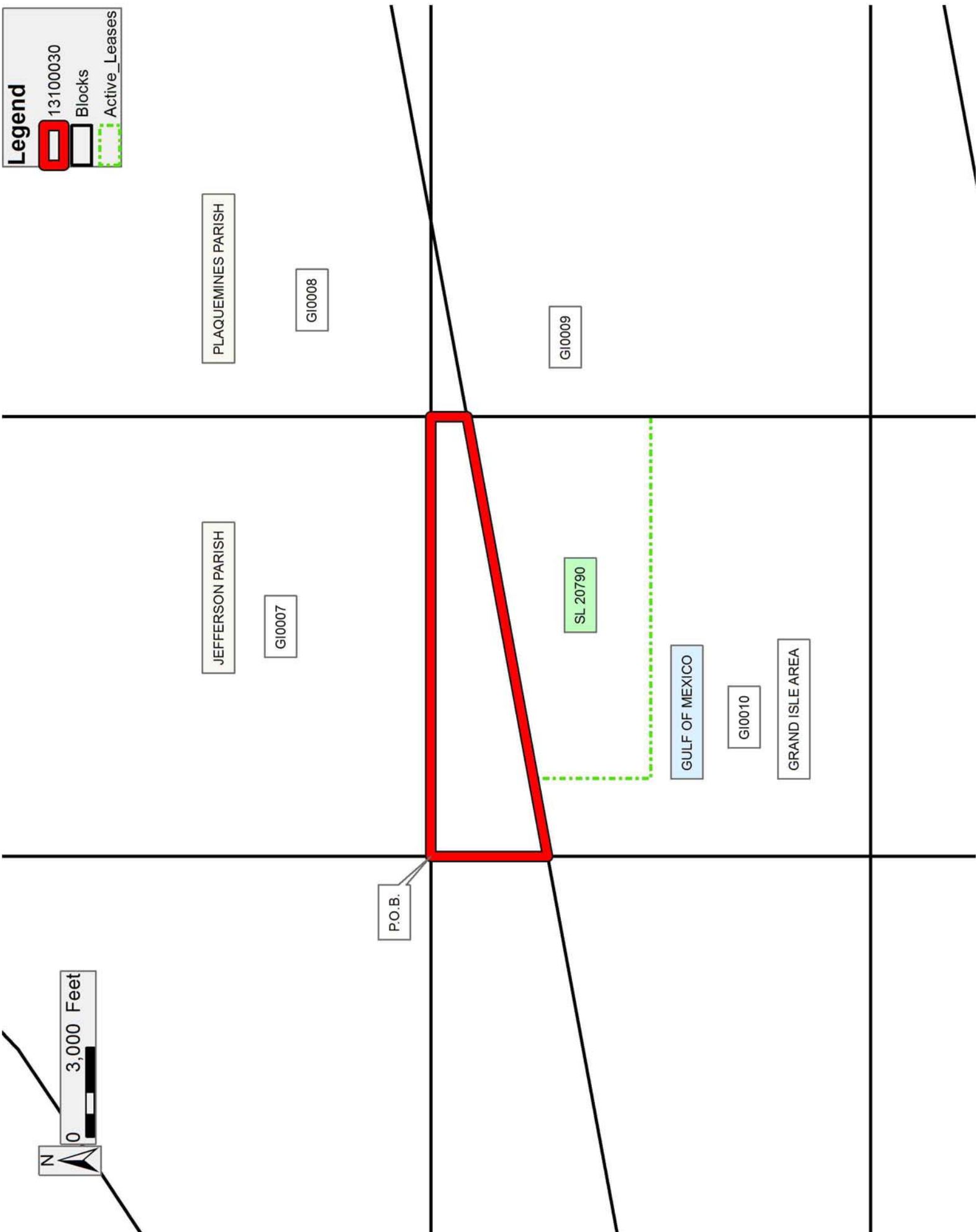
NOTE: It appears, according to our records, that a portion of this Tract is located within the restrictive safety fairway area as set out by the Corps of Engineers, U.S. Army and/or the restrictive anchorage area as set out by the U.S. Coast Guard.

Applicant: BLANTON PETROLEUM CORP.

Bidder	Cash Payment	Price/Acre	Rental	Oil	Gas	Other

Legend

- 13100030
- Blocks
- Active_Leases



TRACT 43536 - Portion of Block 11, Grand Isle Area, Jefferson Parish, Louisiana

All of the lands now or formerly constituting the beds and bottoms of all water bodies of every nature and description as to which title is vested in the State of Louisiana, together with all islands arising therein and other lands formed by accretion or by reliction, where allowed by law, excepting tax adjudicated lands, and not presently under mineral lease on October 9, 2013, situated in Jefferson Parish, Louisiana, and more particularly described as follows: Beginning at the Northeast corner of Block 11, Grand Isle Area having Coordinates of X = 2,442,901.85 and Y = 200,293.43; thence South 3,929.54 feet along the East line of said Block 11 to a point on the Louisiana Coastline, as decreed by the Supreme Court of the United States, as determined by a Special Master appointed therein, in litigation styled *United States v. State of Louisiana et al No. 9 Original*, in 1975, having Coordinates of X = 2,442,901.85 and Y = 196,363.89; thence Southwesterly along said Coastline to a point on the West line of said Block 11 having Coordinates of X = 2,428,143.81 and Y = 193,646.48; thence along the boundary of said Block 11 the following courses: North 6,646.95 feet to a point having Coordinates of X = 2,428,143.81 and Y = 200,293.43 and East 14,758.05 feet to the point of beginning, containing **1,791.65 acres**, all as more particularly outlined on a plat on file in the Office of Mineral Resources, Department of Natural Resources. All bearings, distances and coordinates are based on Louisiana Coordinate System of 1927, (North or South Zone), where applicable.

NOTE: The above description of the Tract nominated for lease has been provided and corrected, where required, exclusively by the nomination party. Any mineral lease selected from this Tract and awarded by the Louisiana State Mineral and Energy Board shall be without warranty of any kind, either express, implied, or statutory, including, but not limited to, the implied warranties of merchantability and fitness for a particular purpose. Should the mineral lease awarded by the Louisiana State Mineral and Energy Board be subsequently modified, cancelled or abrogated due to the existence of conflicting leases, operating agreements, private claims or other future obligations or conditions which may affect all or any portion of the leased Tract, it shall not relieve the Lessee of the obligation to pay any bonus due thereon to the Louisiana State Mineral and Energy Board, nor shall the Louisiana State Mineral and Energy Board be obligated to refund any consideration paid by the Lessor prior to such modification, cancellation, or abrogation, including, but not limited to, bonuses, rentals and royalties.

NOTE: The State of Louisiana does hereby reserve, and this lease shall be subject to, the imprescriptible right of surface use in the nature of a servitude in favor of the Department of Natural Resources, including its Offices and Commissions, for the sole purpose of implementing, constructing, servicing and maintaining approved coastal zone management and/or restoration projects. Utilization of any and all rights derived under this lease by the mineral lessee, its agents, successors or assigns,

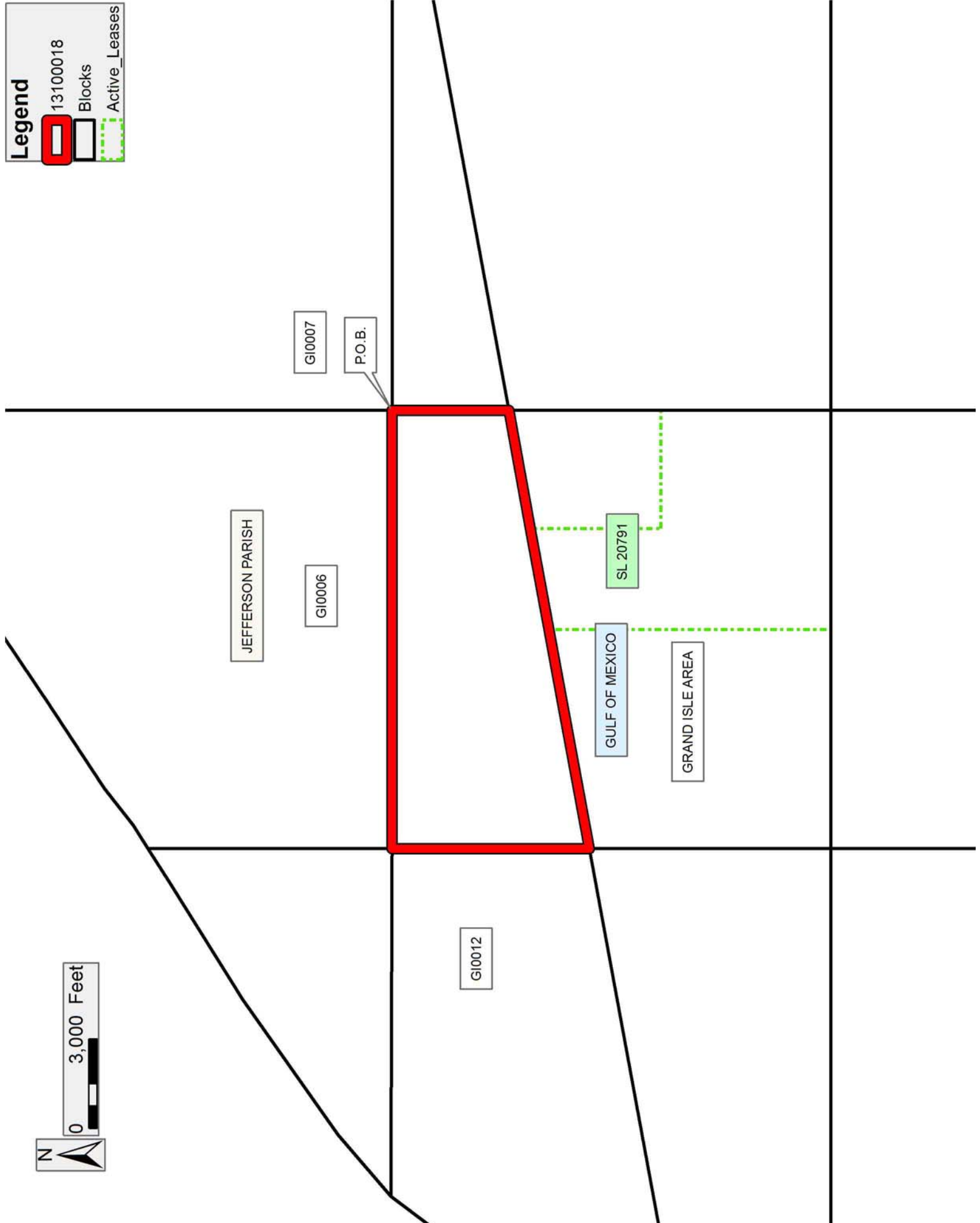
shall not interfere with nor hinder the reasonable surface use by the Department of Natural Resources, its Offices or Commissions, as herein above reserved.

Applicant: BLANTON PETROLEUM CORP.

Bidder	Cash Payment	Price/Acre	Rental	Oil	Gas	Other

Legend

- 13100018
- Blocks
- Active_Leases



TRACT 43537 - Portion of Block 12, Grand Isle Area, Jefferson Parish, Louisiana

All of the lands now or formerly constituting the beds and bottoms of all water bodies of every nature and description as to which title is vested in the State of Louisiana, together with all islands arising therein and other lands formed by accretion or by reliction, where allowed by law, excepting tax adjudicated lands, and not presently under mineral lease on October 9, 2013, situated in Jefferson Parish, Louisiana, and more particularly described as follows: Beginning at a point on the North line of Block 12, Grand Isle Area having Coordinates of X = 2,418,600.00 and Y = 200,293.43; thence along the boundary of said Block 12 the following courses: East 9,543.81 feet to a point having Coordinates of X = 2,428,143.81 and Y = 200,293.43 and South 6,646.95 feet to a point on the Louisiana Coastline, as decreed by the Supreme Court of the United States, as determined by a Special Master appointed therein, in litigation styled *United States v. State of Louisiana et al No. 9 Original*, in 1975, having Coordinates of X = 2,428,143.81 and Y = 193,646.48; thence Southwesterly on a straight line along the said Coastline to a point having Coordinates of X = 2,418,600.00 and Y = 191,889.18; thence North 8,404.25 feet to the point of beginning, containing **1,648.83 acres**, all as more particularly outlined on a plat on file in the Office of Mineral Resources, Department of Natural Resources. All bearings, distances and coordinates are based on Louisiana Coordinate System of 1927, (North or South Zone), where applicable.

NOTE: The above description of the Tract nominated for lease has been provided and corrected, where required, exclusively by the nomination party. Any mineral lease selected from this Tract and awarded by the Louisiana State Mineral and Energy Board shall be without warranty of any kind, either express, implied, or statutory, including, but not limited to, the implied warranties of merchantability and fitness for a particular purpose. Should the mineral lease awarded by the Louisiana State Mineral and Energy Board be subsequently modified, cancelled or abrogated due to the existence of conflicting leases, operating agreements, private claims or other future obligations or conditions which may affect all or any portion of the leased Tract, it shall not relieve the Lessee of the obligation to pay any bonus due thereon to the Louisiana State Mineral and Energy Board, nor shall the Louisiana State Mineral and Energy Board be obligated to refund any consideration paid by the Lessor prior to such modification, cancellation, or abrogation, including, but not limited to, bonuses, rentals and royalties.

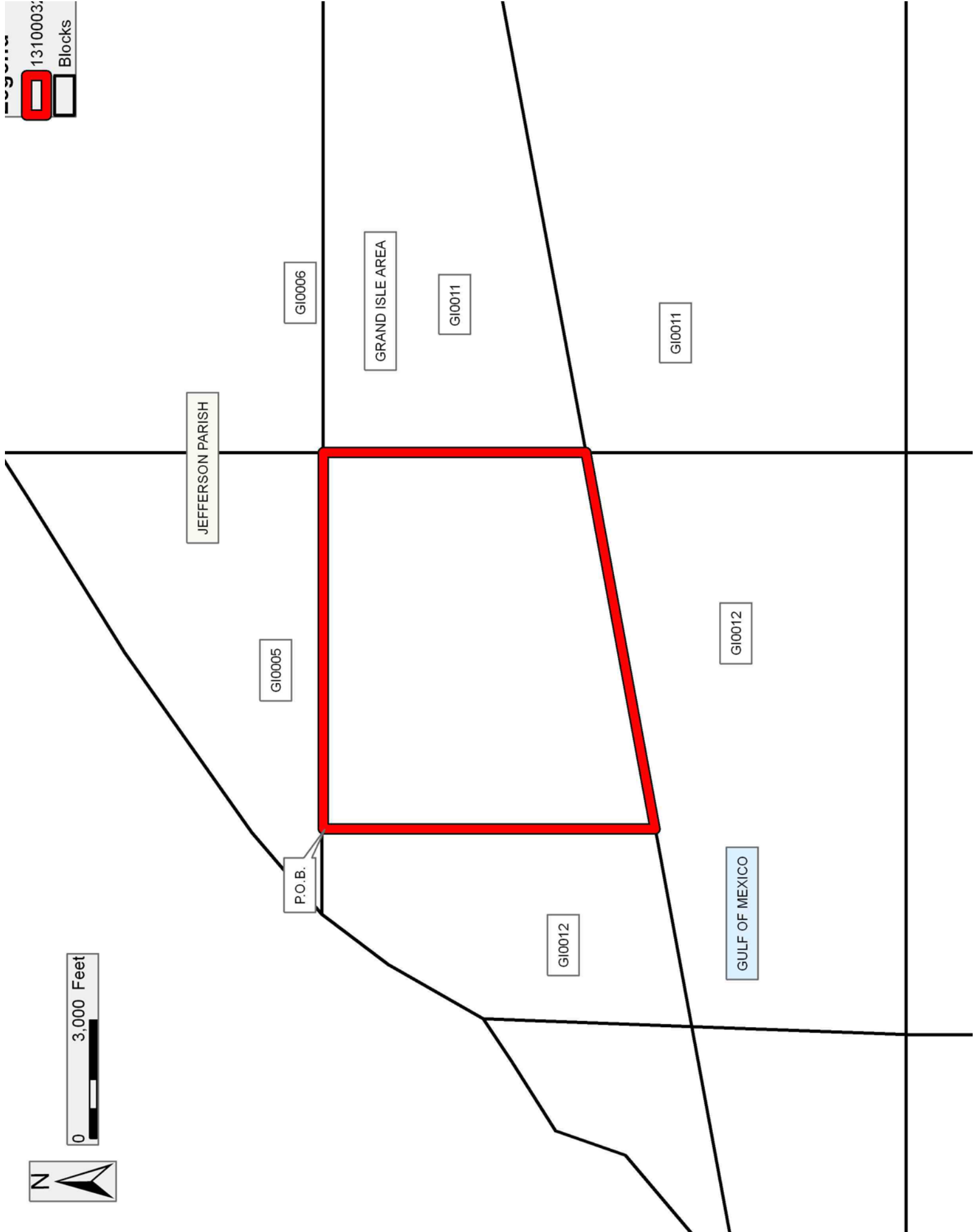
NOTE: The State of Louisiana does hereby reserve, and this lease shall be subject to, the imprescriptible right of surface use in the nature of a servitude in favor of the Department of Natural Resources, including its Offices and Commissions, for the sole purpose of implementing, constructing, servicing and maintaining approved coastal zone management and/or restoration projects. Utilization of any and all rights derived under this lease by the mineral lessee, its agents, successors or assigns,

shall not interfere with nor hinder the reasonable surface use by the Department of Natural Resources, its Offices or Commissions, as herein above reserved.

Applicant: BLANTON PETROLEUM CORP.

Bidder	Cash Payment	Price/Acre	Rental	Oil	Gas	Other

Legend
1310003;
Blocks



0 3,000 Feet

TRACT 43538 - Portion of Blocks 12, and 13, Grand Isle Area, Jefferson Parish, Louisiana

All of the lands now or formerly constituting the beds and bottoms of all water bodies of every nature and description as to which title is vested in the State of Louisiana, together with all islands arising therein and other lands formed by accretion or by reliction, where allowed by law, excepting tax adjudicated lands, and not presently under mineral lease on October 9, 2013, situated in Jefferson Parish, Louisiana, and more particularly described as follows: Beginning at a point on the North line of Block 12, Grand Isle Area having Coordinates of X = 2,418,600.00 and Y = 200,293.43; thence South 8,404.25 feet to a point on the Louisiana Coastline, as decreed by the Supreme Court of the United States, as determined by a Special Master appointed therein, in litigation styled *United States v. State of Louisiana et al No. 9 Original*, in 1975, having Coordinates of X = 2,418,600.00 and Y = 191,889.18; thence Southwesterly on a straight line along the said Coastline to a point on the West line of Block 13, Grand Isle Area having Coordinates of X = 2,406,890.00 and Y = 189,733.00; thence along the boundary of said Block 13 the following courses: thence North 49 degrees 45 minutes 41 seconds East 4,506.39 feet to a point having Coordinates of X = 2,410,330.00 and Y = 192,644.00; North 19 degrees 17 minutes 45 seconds East 1,873.23 feet to a point having Coordinates of X = 2,410,949.00 and Y = 194,412.00; North 57 degrees 41 minutes 54 seconds East 2,152.04 feet to a point having Coordinates of X = 2,412,768.00 and Y = 195,562.00; North 56 degrees 13 minutes 56 seconds East 743.14 feet to the common corner between said Block 13 and said Block 12 having Coordinates of X = 2,413,385.77 and Y = 195,975.06; thence along the boundary of said Block 12 the following courses: North 56 degrees 13 minutes 55 seconds East 480.25 feet having Coordinates of X = 2,413,785.00 and Y = 196,242.00; North 36 degrees 12 minutes 56 seconds East 2,171.54 feet to a point having Coordinates of X = 2,415,068.00 and Y = 197,994.00; North 08 degrees 19 minutes 02 seconds East 649.84 feet to a point having Coordinates of X = 2,415,162.00 and Y = 198,637.00; North 37 degrees 04 minutes 30 seconds East 2,076.12 feet to a point having Coordinates of X = 2,416,413.61 and Y = 200,293.43; and East 2,186.39 feet to the point of beginning, (This tract includes only waterbottoms claimed and owned by the state and specifically excludes any land which the state or Wildlife and Fisheries may claim or own and to which the mineral rights are vested in them), containing **1,288.21 acres**, all as more particularly outlined on a plat on file in the Office of Mineral Resources, Department of Natural Resources. All bearings, distances and coordinates are based on Louisiana Coordinate System of 1927, (North or South Zone), where applicable.

NOTE: The above description of the Tract nominated for lease has been provided and corrected, where required, exclusively by the nomination party. Any mineral lease selected from this Tract and awarded by the Louisiana State Mineral and Energy Board shall be without warranty of any kind, either express, implied, or statutory, including, but not limited to, the implied warranties of merchantability and fitness for a particular

purpose. Should the mineral lease awarded by the Louisiana State Mineral and Energy Board be subsequently modified, cancelled or abrogated due to the existence of conflicting leases, operating agreements, private claims or other future obligations or conditions which may affect all or any portion of the leased Tract, it shall not relieve the Lessee of the obligation to pay any bonus due thereon to the Louisiana State Mineral and Energy Board, nor shall the Louisiana State Mineral and Energy Board be obligated to refund any consideration paid by the Lessor prior to such modification, cancellation, or abrogation, including, but not limited to, bonuses, rentals and royalties.

NOTE: The State of Louisiana does hereby reserve, and this lease shall be subject to, the imprescriptible right of surface use in the nature of a servitude in favor of the Department of Natural Resources, including its Offices and Commissions, for the sole purpose of implementing, constructing, servicing and maintaining approved coastal zone management and/or restoration projects. Utilization of any and all rights derived under this lease by the mineral lessee, its agents, successors or assigns, shall not interfere with nor hinder the reasonable surface use by the Department of Natural Resources, its Offices or Commissions, as herein above reserved.

Applicant: BLANTON PETROLEUM CORP.

Bidder	Cash Payment	Price/Acre	Rental	Oil	Gas	Other

Legend

- 13100023 (Red outline)
- Blocks (Black outline)
- Active_Leases (Green dashed outline)

