

TRACT 43542 - Portion of Block 4, West Cameron Area, Revised, Cameron Parish, Louisiana

The beds and bottoms of all water bodies belonging to the State of Louisiana located in Block 4, West Cameron Area, Revised, together with any present lands formed by accretion to the shoreline or islands formed therein, located in Cameron Parish, Louisiana, owned by and not presently under mineral lease as of November 13, 2013, from the State of Louisiana, the geographical area of which is more fully described as follows: Beginning at a point having Coordinates of X = 1,383,870.00 and Y = 402,075.00; thence North 7,040.68 feet to a point on the Louisiana Coastline, as decreed by the Supreme Court of the United States, as determined by a Special Master appointed therein, in litigation styled *United States v. State of Louisiana et al No. 9 Original*, in 1975, having Coordinates of X = 1,383,870.00 and Y = 409,115.68; thence along said Coastline the following: Easterly on a straight line to a point having Coordinates of X = 1,383,990.00 and Y = 409,136.00; Easterly on a straight line to a point having Coordinates of X = 1,386,636.00 and Y = 409,216.00 and Easterly on a straight line to the Northeast corner of Block 4, West Cameron Area, Revised having Coordinates of X = 1,391,451.71 and Y = 409,240.45; thence South 7,165.45 feet along the East line of said Block 4 to a point having Coordinates of X = 1,391,451.71 and Y = 402,075.00; thence West 7,581.71 feet to the point of beginning, containing **1,241.58 acres**, all as more particularly outlined on a plat on file in the Office of Mineral Resources, Department of Natural Resources. All bearings, distances and coordinates are based on Louisiana Coordinate System of 1927, (North or South Zone).

NOTE: The above description of the Tract nominated for lease has been provided and corrected, where required, exclusively by the nomination party. Any mineral lease selected from this Tract and awarded by the Louisiana State Mineral and Energy Board shall be without warranty of any kind, either express, implied, or statutory, including, but not limited to, the implied warranties of merchantability and fitness for a particular purpose. Should the mineral lease awarded by the Louisiana State Mineral and Energy Board be subsequently modified, cancelled or abrogated due to the existence of conflicting leases, operating agreements, private claims or other future obligations or conditions which may affect all or any portion of the leased Tract, it shall not relieve the Lessee of the obligation to pay any bonus due thereon to the Louisiana State Mineral and Energy Board, nor shall the Louisiana State Mineral and Energy Board be obligated to refund any consideration paid by the Lessor prior to such modification, cancellation, or abrogation, including, but not limited to, bonuses, rentals and royalties.

NOTE: The State of Louisiana does hereby reserve, and this lease shall be subject to, the imprescriptible right of surface use in the nature of a servitude in favor of the Department of Natural Resources, including its Offices and Commissions, for the sole purpose of implementing, constructing, servicing and maintaining approved coastal zone management and/or restoration projects. Utilization of any and all rights derived

under this lease by the mineral lessee, its agents, successors or assigns, shall not interfere with nor hinder the reasonable surface use by the Department of Natural Resources, its Offices or Commissions, as herein above reserved.

Applicant: ALLEN & KIRMSE, LTD.

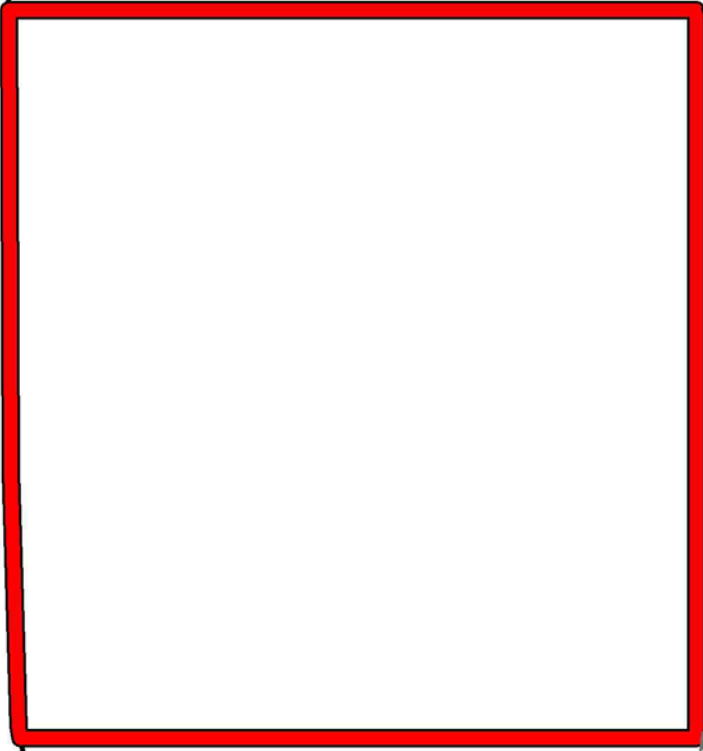
Bidder	Cash Payment	Price/Acre	Rental	Oil	Gas	Other

1311004:
Blocks

CAMERON PARISH

GULF OF MEXICO

WC0003



0 2,000 Feet



WC0004

WEST CAMERON AREA, REVISED

P.O.B.

TRACT 43543 - Portion of Block 3, West Cameron Area, Revised, Cameron Parish, Louisiana

The beds and bottoms of all water bodies belonging to the State of Louisiana located in Block 3, West Cameron Area, Revised, together with any present lands formed by accretion to the shoreline or islands formed therein, located in Cameron Parish, Louisiana, owned by and not presently under mineral lease as of November 13, 2013, from the State of Louisiana, the geographical area of which is more fully described as follows: Beginning at a point on the West line of Block 3, West Cameron Area, Revised having Coordinates of X = 1,391,451.71 and Y = 404,693.76; thence North 4,546.69 feet along the West line of said Block 3 to a point on the Louisiana Coastline, as decreed by the Supreme Court of the United States, as determined by a Special Master appointed therein, in litigation styled *United States v. State of Louisiana et al No. 9 Original*, in 1975, having Coordinates of X = 1,391,451.71 and Y = 409,240.45; thence along said Coastline: Easterly on a straight line to a point having Coordinates of X = 1,391,954 and Y = 409,243; Southeasterly on a straight line to a point having Coordinates of X = 1,392,000 and Y = 409,180; Southeasterly on a straight line to a point having Coordinates of X = 1,397,220 and Y = 408,870; Southeasterly on a straight line to a point having Coordinates of X = 1,402,525 and Y = 408,365 and Southeasterly on a straight line to the Northwest corner of State Lease No. 20473 having Coordinates of X = 1,404,358.01 and Y = 408,059.50; thence South 18 degrees 52 minutes 45 seconds West 3,557.10 feet along the boundary of said State Lease No. 20473 to a point having Coordinates of X = 1,403,207.04 and Y = 404,693.76; thence West 11,755.33 feet to the point of beginning, containing **1,157.70 acres**, all as more particularly outlined on a plat on file in the Office of Mineral Resources, Department of Natural Resources. All bearings, distances and coordinates are based on Louisiana Coordinate System of 1927, (North or South Zone).

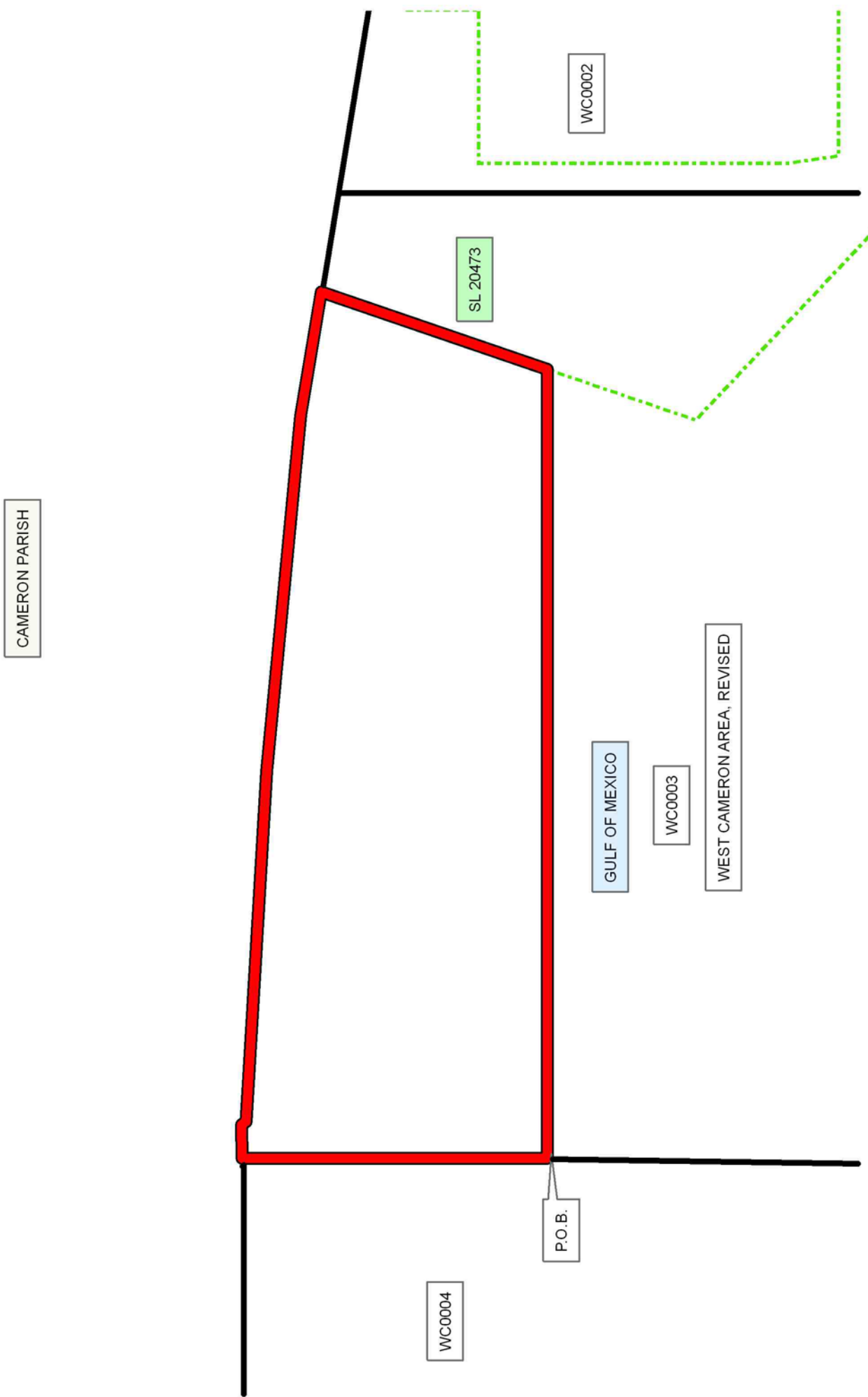
NOTE: The above description of the Tract nominated for lease has been provided and corrected, where required, exclusively by the nomination party. Any mineral lease selected from this Tract and awarded by the Louisiana State Mineral and Energy Board shall be without warranty of any kind, either express, implied, or statutory, including, but not limited to, the implied warranties of merchantability and fitness for a particular purpose. Should the mineral lease awarded by the Louisiana State Mineral and Energy Board be subsequently modified, cancelled or abrogated due to the existence of conflicting leases, operating agreements, private claims or other future obligations or conditions which may affect all or any portion of the leased Tract, it shall not relieve the Lessee of the obligation to pay any bonus due thereon to the Louisiana State Mineral and Energy Board, nor shall the Louisiana State Mineral and Energy Board be obligated to refund any consideration paid by the Lessor prior to such modification, cancellation, or abrogation, including, but not limited to, bonuses, rentals and royalties.

NOTE: The State of Louisiana does hereby reserve, and this lease shall be subject to, the imprescriptible right of surface use in the nature of a servitude in favor of the Department of Natural Resources, including its Offices and Commissions, for the sole purpose of implementing, constructing, servicing and maintaining approved coastal zone management and/or restoration projects. Utilization of any and all rights derived under this lease by the mineral lessee, its agents, successors or assigns, shall not interfere with nor hinder the reasonable surface use by the Department of Natural Resources, its Offices or Commissions, as herein above reserved.

Applicant: ALLEN & KIRMSE, LTD.

Bidder	Cash Payment	Price/Acre	Rental	Oil	Gas	Other

13110049
Active Lease:



TRACT 43544 - Portion of Block 4, West Cameron Area, Revised, Cameron Parish, Louisiana

The beds and bottoms of all water bodies belonging to the State of Louisiana located in Block 4, West Cameron Area, Revised, together with any present lands formed by accretion to the shoreline or islands formed therein, located in Cameron Parish, Louisiana, owned by and not presently under mineral lease as of November 13, 2013, from the State of Louisiana, the geographical area of which is more fully described as follows: Beginning at a point having Coordinates of X = 1,383,870.00 and Y = 402,075.00; thence West 5,385.00 feet to a point having Coordinates of X = 1,378,485.00 and Y = 402,075.00; thence North 6,173.79 feet to a point on the Louisiana Coastline, as decreed by the Supreme Court of the United States, as determined by a Special Master appointed therein, in litigation styled *United States v. State of Louisiana et al No. 9 Original*, in 1975, having Coordinates of X = 1,378,485.00 and Y = 408,248.79; thence along said Coastline Northeasterly on a straight line to a point having Coordinates of X = 1,380,235 and Y = 408,500 and Northeasterly on a straight line to a point having Coordinates of X = 1,383,870.00 and Y = 409,115.68; thence South 7,040.68 feet to the point of beginning, containing approximately **815 acres**, all as more particularly outlined on a plat on file in the Office of Mineral Resources, Department of Natural Resources. All bearings, distances and coordinates are based on Louisiana Coordinate System of 1927, (North or South Zone).

NOTE: The above description of the Tract nominated for lease has been provided and corrected, where required, exclusively by the nomination party. Any mineral lease selected from this Tract and awarded by the Louisiana State Mineral and Energy Board shall be without warranty of any kind, either express, implied, or statutory, including, but not limited to, the implied warranties of merchantability and fitness for a particular purpose. Should the mineral lease awarded by the Louisiana State Mineral and Energy Board be subsequently modified, cancelled or abrogated due to the existence of conflicting leases, operating agreements, private claims or other future obligations or conditions which may affect all or any portion of the leased Tract, it shall not relieve the Lessee of the obligation to pay any bonus due thereon to the Louisiana State Mineral and Energy Board, nor shall the Louisiana State Mineral and Energy Board be obligated to refund any consideration paid by the Lessor prior to such modification, cancellation, or abrogation, including, but not limited to, bonuses, rentals and royalties.

NOTE: The State of Louisiana does hereby reserve, and this lease shall be subject to, the imprescriptible right of surface use in the nature of a servitude in favor of the Department of Natural Resources, including its Offices and Commissions, for the sole purpose of implementing, constructing, servicing and maintaining approved coastal zone management and/or restoration projects. Utilization of any and all rights derived under this lease by the mineral lessee, its agents, successors or assigns, shall not interfere with nor hinder the reasonable surface use by the

Department of Natural Resources, its Offices or Commissions, as herein above reserved.

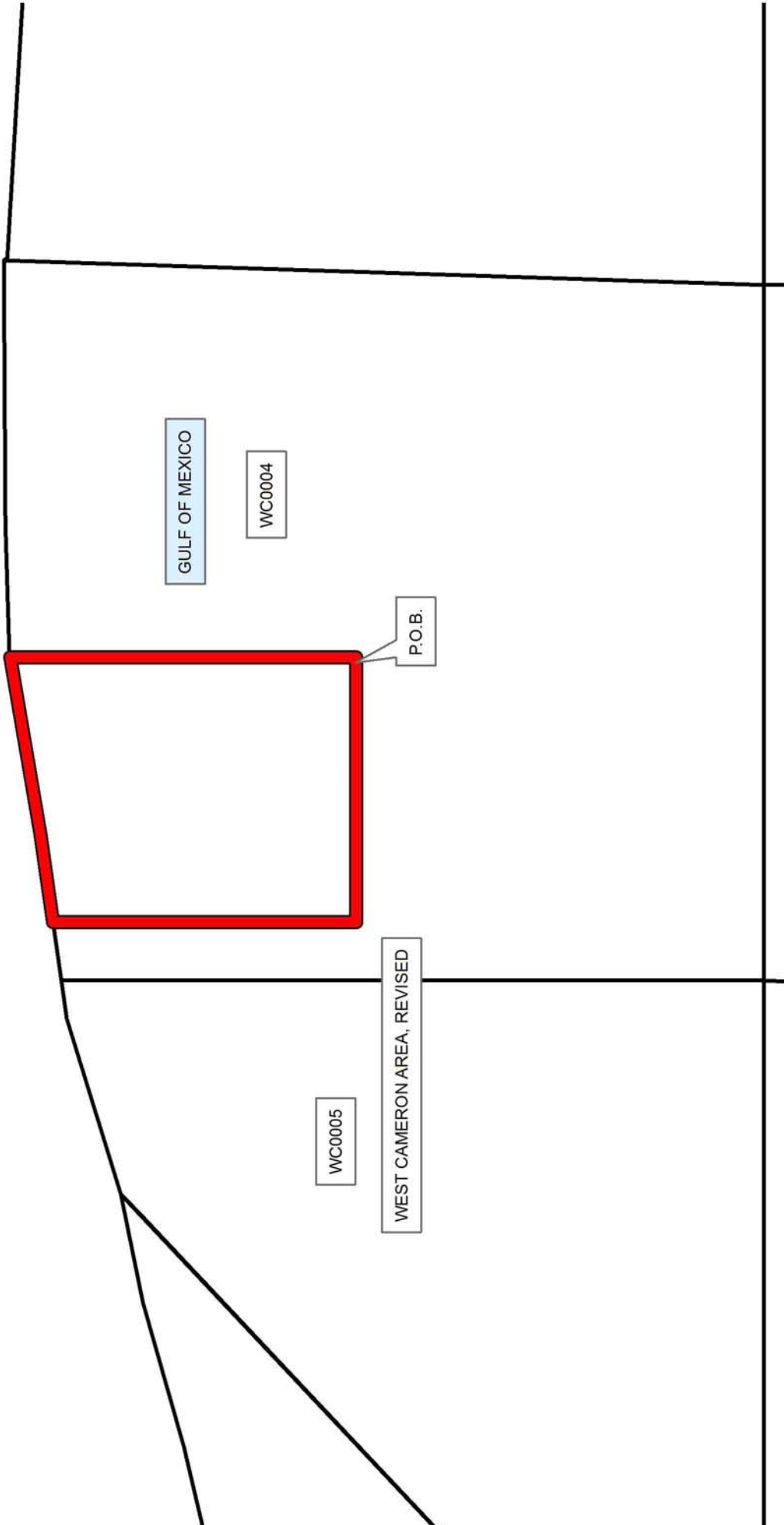
Applicant: ALLEN & KIRMSE, LTD.

Bidder	Cash Payment	Price/Acre	Rental	Oil	Gas	Other

Legend
 13110041
 Blocks



CAMERON PARISH



TRACT 43545 - Portion of Blocks 4, and 5, West Cameron Area, Revised, Cameron Parish, Louisiana

The beds and bottoms of all water bodies belonging to the State of Louisiana located in Blocks 4, and 5, West Cameron Area, Revised, together with any present lands formed by accretion to the shoreline or islands formed therein, located in Cameron Parish, Louisiana, owned by and not presently under mineral lease as of November 13, 2013, from the State of Louisiana, the geographical area of which is more fully described as follows: Beginning at a point having Coordinates of X = 1,378,485.00 and Y = 402,075.00; thence West 5,385.00 feet to a point having Coordinates of X = 1,373,100.00 and Y = 402,075.00; thence North 4,834.93 feet to a point on the Louisiana Coastline, as decreed by the Supreme Court of the United States, as determined by a Special Master appointed therein, in litigation styled *United States v. State of Louisiana et al No. 9 Original*, in 1975, having Coordinates of X = 1,373,100.00 and Y = 406,909.93; thence along said Coastline the following: Northeasterly on a straight line to a point having Coordinates of X = 1,376,515 and Y = 407,966 and Northeasterly on a straight line to a point having Coordinates of X = 1,378,485.00 and Y = 408,248.79; thence South 6,173.79 feet to the point of beginning, containing **693.26 acres**, all as more particularly outlined on a plat on file in the Office of Mineral Resources, Department of Natural Resources. All bearings, distances and coordinates are based on Louisiana Coordinate System of 1927, (North or South Zone).

NOTE: The above description of the Tract nominated for lease has been provided and corrected, where required, exclusively by the nomination party. Any mineral lease selected from this Tract and awarded by the Louisiana State Mineral and Energy Board shall be without warranty of any kind, either express, implied, or statutory, including, but not limited to, the implied warranties of merchantability and fitness for a particular purpose. Should the mineral lease awarded by the Louisiana State Mineral and Energy Board be subsequently modified, cancelled or abrogated due to the existence of conflicting leases, operating agreements, private claims or other future obligations or conditions which may affect all or any portion of the leased Tract, it shall not relieve the Lessee of the obligation to pay any bonus due thereon to the Louisiana State Mineral and Energy Board, nor shall the Louisiana State Mineral and Energy Board be obligated to refund any consideration paid by the Lessor prior to such modification, cancellation, or abrogation, including, but not limited to, bonuses, rentals and royalties.

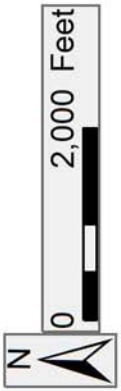
NOTE: The State of Louisiana does hereby reserve, and this lease shall be subject to, the imprescriptible right of surface use in the nature of a servitude in favor of the Department of Natural Resources, including its Offices and Commissions, for the sole purpose of implementing, constructing, servicing and maintaining approved coastal zone management and/or restoration projects. Utilization of any and all rights derived under this lease by the mineral lessee, its agents, successors or assigns, shall not interfere with nor hinder the reasonable surface use by the

Department of Natural Resources, its Offices or Commissions, as herein above reserved.

Applicant: ALLEN & KIRMSE, LTD.

Bidder	Cash Payment	Price/Acre	Rental	Oil	Gas	Other

Legend
13110068
Blocks



CAMERON PARISH

GULF OF MEXICO

WC0004

P.O.B.

WC0005

WEST CAMERON AREA, REVISED

TRACT 43546 - Portion of Block 5, West Cameron Area, Revised, Cameron Parish, Louisiana

The beds and bottoms of all water bodies belonging to the State of Louisiana located in Block 5, West Cameron Area, Revised, together with any present lands formed by accretion to the shoreline or islands formed therein, located in Cameron Parish, Louisiana, owned by and not presently under mineral lease as of November 13, 2013, from the State of Louisiana, the geographical area of which is more fully described as follows: Beginning at a point having Coordinates of X = 1,373,100.00 and Y = 402,075.00; thence West 5,240.66 feet to a point on the Louisiana Coastline, as decreed by the Supreme Court of the United States, as determined by a Special Master appointed therein, in litigation styled *United States v. State of Louisiana et al No. 9 Original*, in 1975, having Coordinates of X = 1,367,859.34 and Y = 402,075.00; thence along said Coastline the following: Northeasterly on a straight line to a point having Coordinates of X = 1,372,945 and Y = 406,862 and Northeasterly on a straight line to a point having Coordinates of X = 1,373,100.00 and Y = 406,909.93; thence South 4,834.93 feet to the point of beginning, containing **296.56 acres**, all as more particularly outlined on a plat on file in the Office of Mineral Resources, Department of Natural Resources. All bearings, distances and coordinates are based on Louisiana Coordinate System of 1927, (North or South Zone).

NOTE: The above description of the Tract nominated for lease has been provided and corrected, where required, exclusively by the nomination party. Any mineral lease selected from this Tract and awarded by the Louisiana State Mineral and Energy Board shall be without warranty of any kind, either express, implied, or statutory, including, but not limited to, the implied warranties of merchantability and fitness for a particular purpose. Should the mineral lease awarded by the Louisiana State Mineral and Energy Board be subsequently modified, cancelled or abrogated due to the existence of conflicting leases, operating agreements, private claims or other future obligations or conditions which may affect all or any portion of the leased Tract, it shall not relieve the Lessee of the obligation to pay any bonus due thereon to the Louisiana State Mineral and Energy Board, nor shall the Louisiana State Mineral and Energy Board be obligated to refund any consideration paid by the Lessor prior to such modification, cancellation, or abrogation, including, but not limited to, bonuses, rentals and royalties.

NOTE: The State of Louisiana does hereby reserve, and this lease shall be subject to, the imprescriptible right of surface use in the nature of a servitude in favor of the Department of Natural Resources, including its Offices and Commissions, for the sole purpose of implementing, constructing, servicing and maintaining approved coastal zone management and/or restoration projects. Utilization of any and all rights derived under this lease by the mineral lessee, its agents, successors or assigns, shall not interfere with nor hinder the reasonable surface use by the

Department of Natural Resources, its Offices or Commissions, as herein above reserved.

Applicant: ALLEN & KIRMSE, LTD.

Bidder	Cash Payment	Price/Acre	Rental	Oil	Gas	Other

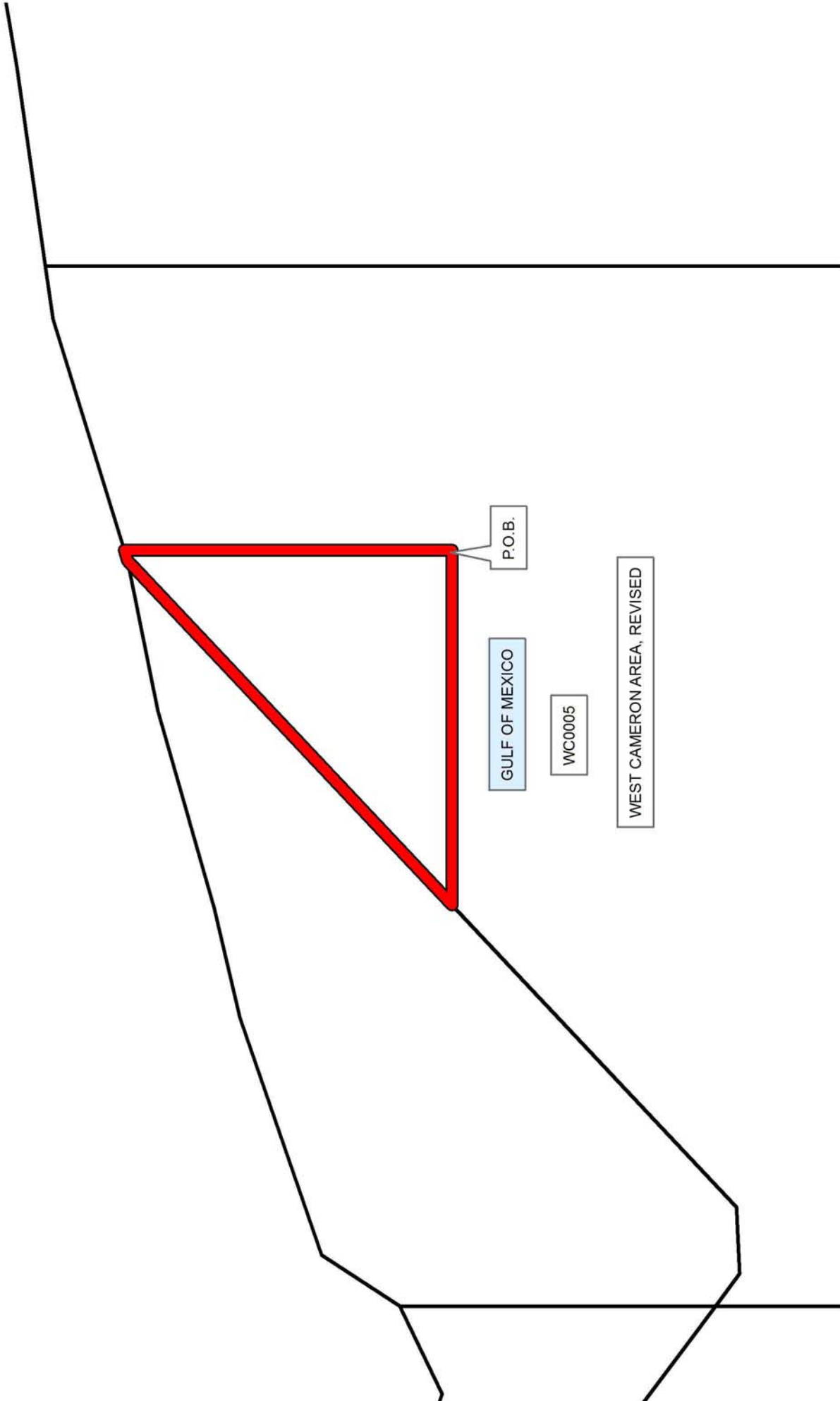
Legend

 13110062

 Blocks



CAMERON PARISH



P.O.B.

GULF OF MEXICO

WC0005

WEST CAMERON AREA, REVISED

TRACT 43547 - Portion of Block 2, West Cameron Area, Revised, Cameron Parish, Louisiana

The beds and bottoms of all water bodies belonging to the State of Louisiana located in Block 2, West Cameron Area, Revised, together with any present lands formed by accretion to the shoreline or islands formed therein, located in Cameron Parish, Louisiana, owned by and not presently under mineral lease as of November 13, 2013, from the State of Louisiana, the geographical area of which is more fully described as follows: Beginning at a point on the East line of Block 2, West Cameron Area, Revised having Coordinates of X = 1,421,416.19 and Y = 399,450.00; thence West 7,560.19 feet to the Easternmost Southeast corner of State Lease No. 19190 having Coordinates of X = 1,413,856.00 and Y = 399,450.00; thence North 3,156.00 feet along the boundary of said State Lease No. 19190 to its Northeast corner and the Southeast corner of State Lease No. 18521 having Coordinates of X = 1,413,856.00 and Y = 402,606.00; thence along the boundary of said State Lease No. 18521 the following courses and distances: North 1,576.00 feet and North 41 degrees 25 minutes 49 seconds West 3,462.25 feet to its Northernmost corner, also being a point on the Louisiana Coastline, as decreed by the Supreme Court of the United States, as determined by a Special Master appointed therein, in litigation styled *United States v. State of Louisiana et al No. 9 Original*, in 1975, having Coordinates of X = 1,411,565.00 and Y = 406,777.87; thence along said Coastline the following: Southeasterly on a straight line to a point having Coordinates of X = 1,416,365 and Y = 405,700 and Southeasterly on a straight line to the Northeast corner of said Block 2 having Coordinates of X = 1,421,416.19 and Y = 404,156.84; thence South 4,706.84 feet along the East line of said Block 2 to the point of beginning, containing **1,066.23 acres**, all as more particularly outlined on a plat on file in the Office of Mineral Resources, Department of Natural Resources. All bearings, distances and coordinates are based on Louisiana Coordinate System of 1927, (North or South Zone).

NOTE: The above description of the Tract nominated for lease has been provided and corrected, where required, exclusively by the nomination party. Any mineral lease selected from this Tract and awarded by the Louisiana State Mineral and Energy Board shall be without warranty of any kind, either express, implied, or statutory, including, but not limited to, the implied warranties of merchantability and fitness for a particular purpose. Should the mineral lease awarded by the Louisiana State Mineral and Energy Board be subsequently modified, cancelled or abrogated due to the existence of conflicting leases, operating agreements, private claims or other future obligations or conditions which may affect all or any portion of the leased Tract, it shall not relieve the Lessee of the obligation to pay any bonus due thereon to the Louisiana State Mineral and Energy Board, nor shall the Louisiana State Mineral and Energy Board be obligated to refund any consideration paid by the Lessor prior to such modification, cancellation, or abrogation, including, but not limited to, bonuses, rentals and royalties.

NOTE: The State of Louisiana does hereby reserve, and this lease shall be subject to, the imprescriptible right of surface use in the nature of a servitude in favor of the Department of Natural Resources, including its Offices and Commissions, for the sole purpose of implementing, constructing, servicing and maintaining approved coastal zone management and/or restoration projects. Utilization of any and all rights derived under this lease by the mineral lessee, its agents, successors or assigns, shall not interfere with nor hinder the reasonable surface use by the Department of Natural Resources, its Offices or Commissions, as herein above reserved.

Applicant: ALLEN & KIRMSE, LTD.

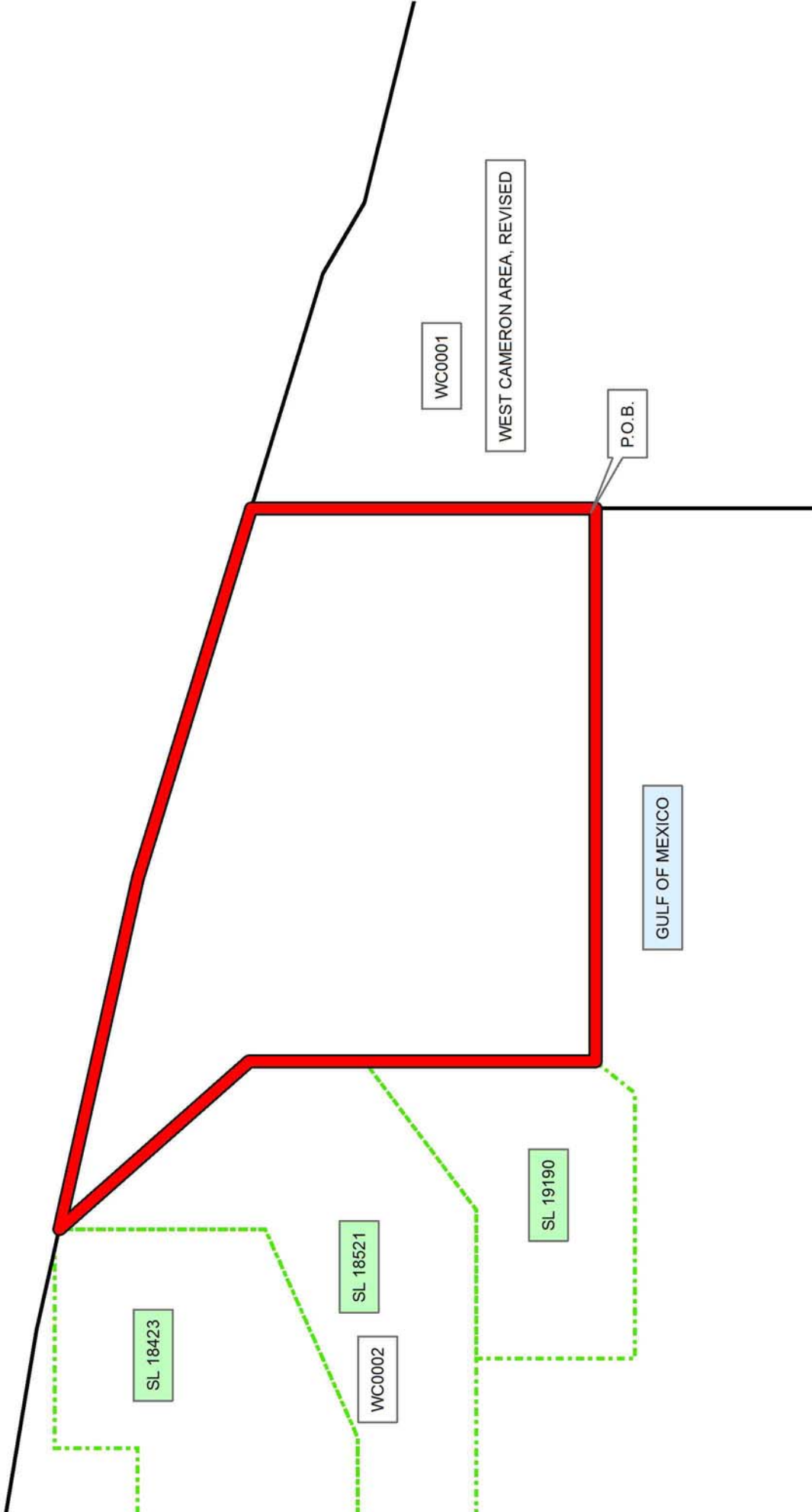
Bidder	Cash Payment	Price/Acre	Rental	Oil	Gas	Other

Legend

- 13110055
- Blocks
- Active_Leases



CAMERON PARISH



TRACT 43548 - Portion of Block 3, West Cameron Area, Revised, Cameron Parish, Louisiana

The beds and bottoms of all water bodies belonging to the State of Louisiana located in Block 3, West Cameron Area, Revised, together with any present lands formed by accretion to the shoreline or islands formed therein, located in Cameron Parish, Louisiana, owned by and not presently under mineral lease as of November 13, 2013, from the State of Louisiana, the geographical area of which is more fully described as follows: Beginning at a point on the West line of Block 3, West Cameron Area, Revised having Coordinates of X = 1,391,451.71 and Y = 404,693.76; thence East 11,755.33 feet to a point on the boundary of State Lease No. 20473 having Coordinates of X = 1,403,207.04 and Y = 404,693.76; thence South 18 degrees 52 minutes 45 seconds West 2,339.62 feet along the boundary of said State Lease No. 20473 to its Westernmost corner having Coordinates of X = 1,402,450.00 and Y = 402,480.00; thence South 3,238.00 feet to a point having Coordinates of X = 1,402,450.00 and Y = 399,242.00; thence West 10,998.29 feet to a point on the West line of said Block 3 having Coordinates of X = 1,391,451.71 and Y = 399,242.00; thence North 5,451.76 feet along the West line of said Block 3 to the point of beginning, containing **1,395.73 acres**, all as more particularly outlined on a plat on file in the Office of Mineral Resources, Department of Natural Resources. All bearings, distances and coordinates are based on Louisiana Coordinate System of 1927, (North or South Zone).

NOTE: The above description of the Tract nominated for lease has been provided and corrected, where required, exclusively by the nomination party. Any mineral lease selected from this Tract and awarded by the Louisiana State Mineral and Energy Board shall be without warranty of any kind, either express, implied, or statutory, including, but not limited to, the implied warranties of merchantability and fitness for a particular purpose. Should the mineral lease awarded by the Louisiana State Mineral and Energy Board be subsequently modified, cancelled or abrogated due to the existence of conflicting leases, operating agreements, private claims or other future obligations or conditions which may affect all or any portion of the leased Tract, it shall not relieve the Lessee of the obligation to pay any bonus due thereon to the Louisiana State Mineral and Energy Board, nor shall the Louisiana State Mineral and Energy Board be obligated to refund any consideration paid by the Lessor prior to such modification, cancellation, or abrogation, including, but not limited to, bonuses, rentals and royalties.

NOTE: The State of Louisiana does hereby reserve, and this lease shall be subject to, the imprescriptible right of surface use in the nature of a servitude in favor of the Department of Natural Resources, including its Offices and Commissions, for the sole purpose of implementing, constructing, servicing and maintaining approved coastal zone management and/or restoration projects. Utilization of any and all rights derived under this lease by the mineral lessee, its agents, successors or assigns, shall not interfere with nor hinder the reasonable surface use by the

Department of Natural Resources, its Offices or Commissions, as herein above reserved.

Applicant: ALLEN & KIRMSE, LTD.

Bidder	Cash Payment	Price/Acre	Rental	Oil	Gas	Other

13110050
Active Lease:



0 2,000 Feet

CAMERON PARISH

GULF OF MEXICO

SL 20473

P.O.B.

WC0003

WEST CAMERON AREA, REVISED

WC0004

TRACT 43549 - Portion of Blocks 2, and 3, West Cameron Area, Revised, Cameron Parish, Louisiana

The beds and bottoms of all water bodies belonging to the State of Louisiana located in Blocks 2, and 3, West Cameron Area, Revised, together with any present lands formed by accretion to the shoreline or islands formed therein, located in Cameron Parish, Louisiana, owned by and not presently under mineral lease as of November 13, 2013, from the State of Louisiana, the geographical area of which is more fully described as follows: Beginning at the Westernmost corner of State Lease No. 20473 having Coordinates of X = 1,402,450.00 and Y = 402,480.00; thence along the boundary of said State Lease No. 20473 the following courses and distances: South 46 degrees 40 minutes 58 seconds East 6,275.18 feet and East 1,583.38 feet to its Southeast corner and the Southwest corner of State Lease No. 18524 having Coordinates of X = 1,408,599.00 and Y = 398,175.00; thence East 1,201.00 feet along the boundary of said State Lease No. 18524 to its Southeast corner and the Southwest corner of State Lease No. 19192 having Coordinates of X = 1,409,800.00 and Y = 398,175.00; thence along the boundary of said State Lease No. 19192 the following courses and distances: South 63 degrees 26 minutes 06 seconds East 2,403.77 feet and North 39 degrees 02 minutes 39 seconds East 2,341.10 feet to its Northeast corner and the Southernmost Southeast corner of State Lease No. 19190 having Coordinates of X = 1,413,424.71 and Y = 398,918.24; thence North 39 degrees 02 minutes 39 seconds East 684.68 feet along the boundary of said State Lease No. 19190 to its Easternmost Southeast corner having Coordinates of X = 1,413,856.00 and Y = 399,450.00; thence South 5,659.76 feet to a point on the South line of Block 2, West Cameron Area, Revised having Coordinates of X = 1,413,856.00 and Y = 393,790.24; thence West 11,406.00 feet along the South lines of said Block 2 and Block 3, West Cameron Area, Revised to a point having Coordinates of X = 1,402,450.00 and Y = 393,790.24; thence North 8,689.76 feet to the point of beginning, containing **1,351.58 acres**, all as more particularly outlined on a plat on file in the Office of Mineral Resources, Department of Natural Resources. All bearings, distances and coordinates are based on Louisiana Coordinate System of 1927, (North or South Zone).

NOTE: The above description of the Tract nominated for lease has been provided and corrected, where required, exclusively by the nomination party. Any mineral lease selected from this Tract and awarded by the Louisiana State Mineral and Energy Board shall be without warranty of any kind, either express, implied, or statutory, including, but not limited to, the implied warranties of merchantability and fitness for a particular purpose. Should the mineral lease awarded by the Louisiana State Mineral and Energy Board be subsequently modified, cancelled or abrogated due to the existence of conflicting leases, operating agreements, private claims or other future obligations or conditions which may affect all or any portion of the leased Tract, it shall not relieve the Lessee of the obligation to pay any bonus due thereon to the Louisiana State Mineral and Energy Board, nor shall the Louisiana State Mineral and Energy Board be

obligated to refund any consideration paid by the Lessor prior to such modification, cancellation, or abrogation, including, but not limited to, bonuses, rentals and royalties.

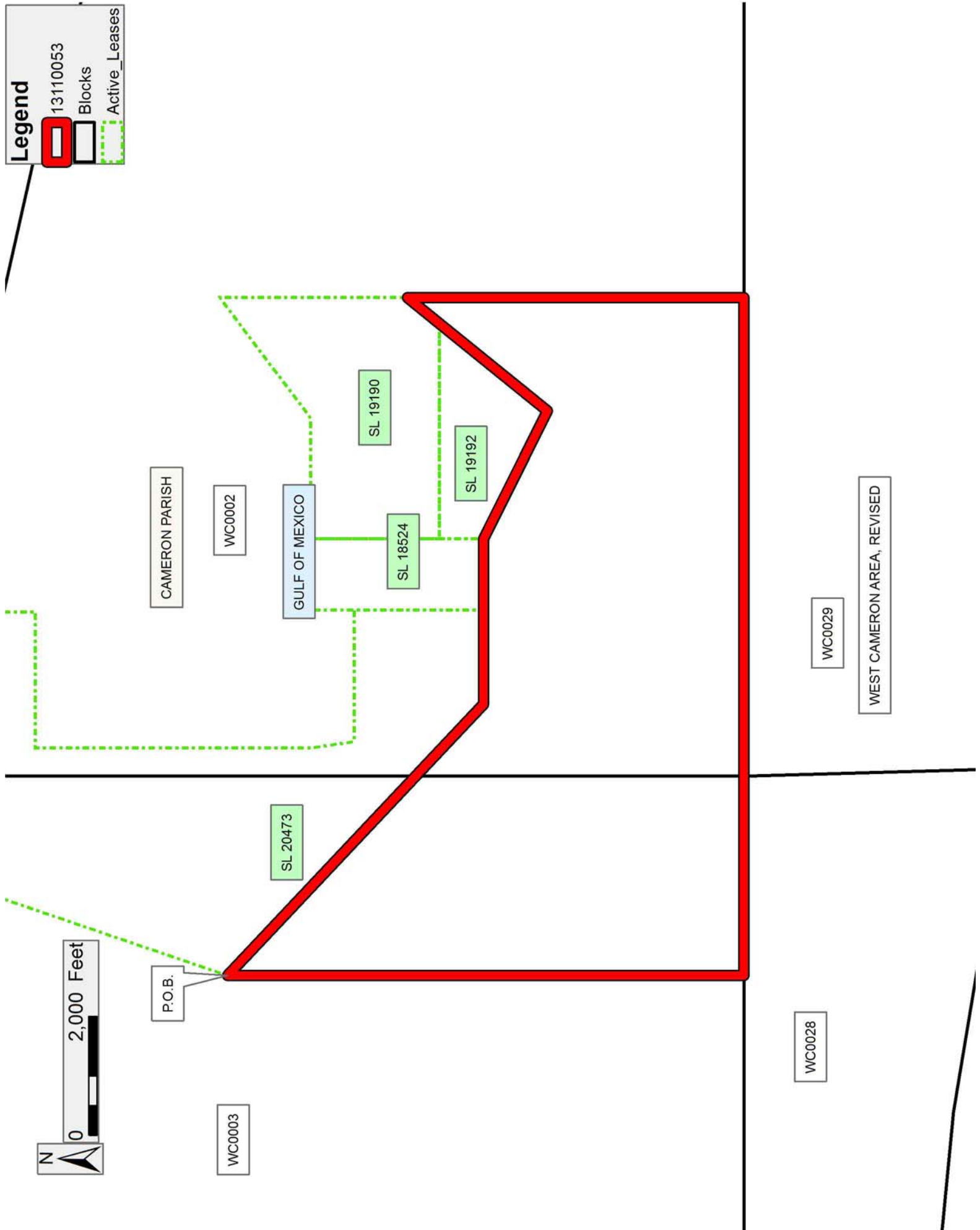
NOTE: The State of Louisiana does hereby reserve, and this lease shall be subject to, the imprescriptible right of surface use in the nature of a servitude in favor of the Department of Natural Resources, including its Offices and Commissions, for the sole purpose of implementing, constructing, servicing and maintaining approved coastal zone management and/or restoration projects. Utilization of any and all rights derived under this lease by the mineral lessee, its agents, successors or assigns, shall not interfere with nor hinder the reasonable surface use by the Department of Natural Resources, its Offices or Commissions, as herein above reserved.

Applicant: ALLEN & KIRMSE, LTD.

Bidder	Cash Payment	Price/Acre	Rental	Oil	Gas	Other

Legend

- 13110053
- Blocks
- Active_Leases



TRACT 43550 - Portion of Block 5, West Cameron Area, Revised, Cameron Parish, Louisiana

The beds and bottoms of all water bodies belonging to the State of Louisiana located in Block 5, West Cameron Area, Revised, together with any present lands formed by accretion to the shoreline or islands formed therein, located in Cameron Parish, Louisiana, owned by and not presently under mineral lease as of November 13, 2013, from the State of Louisiana, the geographical area of which is more fully described as follows: Beginning at a point having Coordinates of X = 1,367,715.00 and Y = 397,675.00; thence West 5,779.38 feet to a point on the West line of Block 5, West Cameron Area, Revised having Coordinates of X = 1,361,935.62 and Y = 397,675.00; thence North 505.71 feet along the West line of said Block 5 to a point on the Louisiana Coastline, as decreed by the Supreme Court of the United States, as determined by a Special Master appointed therein, in litigation styled *United States v. State of Louisiana et al No. 9 Original*, in 1975, having Coordinates of X = 1,361,935.62 and Y = 398,180.71; thence along said Coastline the following courses: Southeasterly on a straight line to a point having Coordinates of X = 1,362,416.00 and Y = 397,822.00, Northeasterly on a straight line to a point having Coordinates of X = 1,363,392 and Y = 397,870 and Northeasterly on a straight line to a point having Coordinates of X = 1,367,715.00 and Y = 401,939.13; thence South 4,264.13 feet to the point of beginning, containing **228.70 acres**, all as more particularly outlined on a plat on file in the Office of Mineral Resources, Department of Natural Resources. All bearings, distances and coordinates are based on Louisiana Coordinate System of 1927, (North or South Zone).

NOTE: The above description of the Tract nominated for lease has been provided and corrected, where required, exclusively by the nomination party. Any mineral lease selected from this Tract and awarded by the Louisiana State Mineral and Energy Board shall be without warranty of any kind, either express, implied, or statutory, including, but not limited to, the implied warranties of merchantability and fitness for a particular purpose. Should the mineral lease awarded by the Louisiana State Mineral and Energy Board be subsequently modified, cancelled or abrogated due to the existence of conflicting leases, operating agreements, private claims or other future obligations or conditions which may affect all or any portion of the leased Tract, it shall not relieve the Lessee of the obligation to pay any bonus due thereon to the Louisiana State Mineral and Energy Board, nor shall the Louisiana State Mineral and Energy Board be obligated to refund any consideration paid by the Lessor prior to such modification, cancellation, or abrogation, including, but not limited to, bonuses, rentals and royalties.

NOTE: The State of Louisiana does hereby reserve, and this lease shall be subject to, the imprescriptible right of surface use in the nature of a servitude in favor of the Department of Natural Resources, including its Offices and Commissions, for the sole purpose of implementing, constructing, servicing and maintaining approved coastal zone management

and/or restoration projects. Utilization of any and all rights derived under this lease by the mineral lessee, its agents, successors or assigns, shall not interfere with nor hinder the reasonable surface use by the Department of Natural Resources, its Offices or Commissions, as herein above reserved.

NOTE: It appears, according to our records, that a portion of this Tract is located within the restrictive safety fairway area as set out by the Corps of Engineers, U.S. Army and/or the restrictive anchorage area as set out by the U.S. Coast Guard.

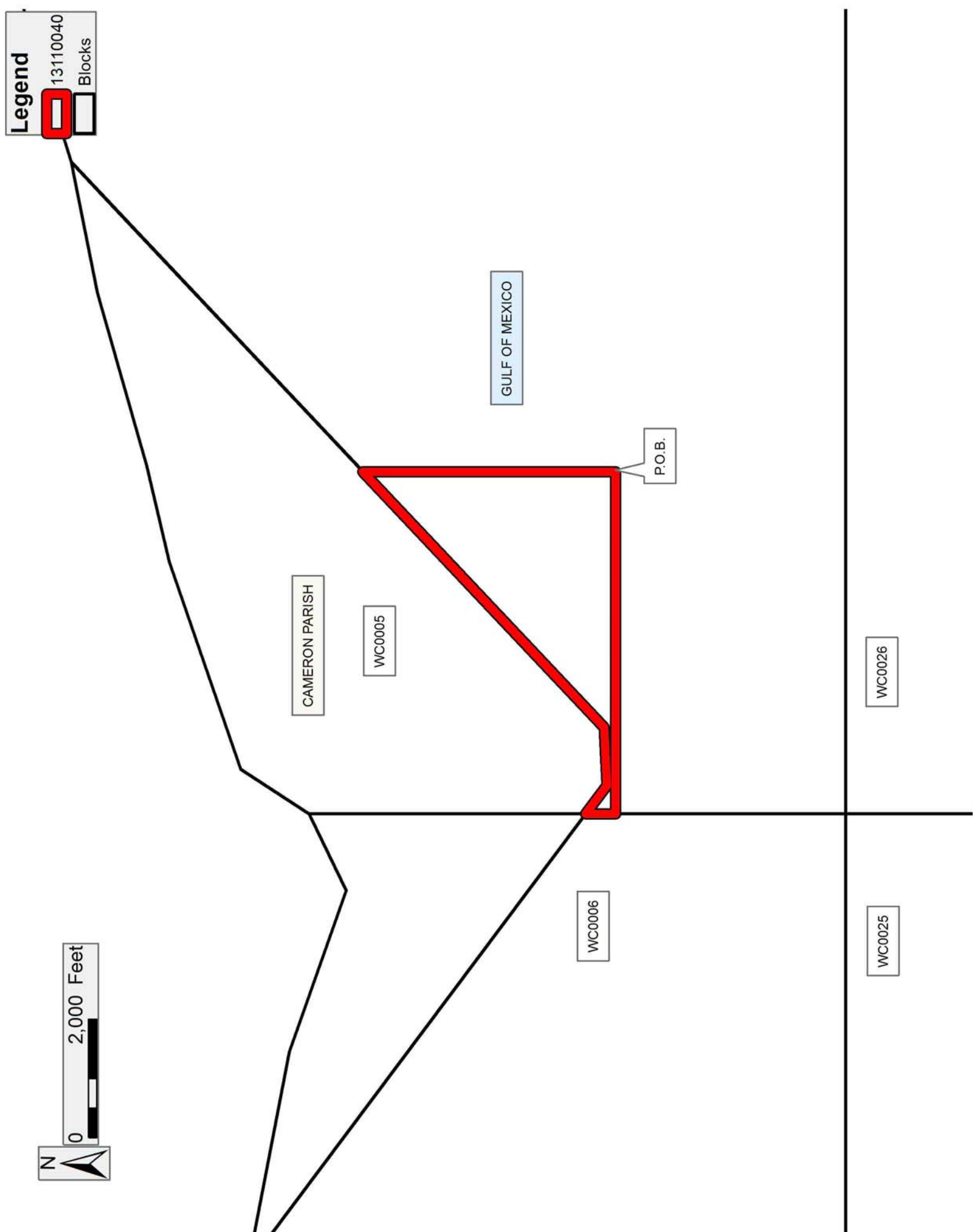
Applicant: ALLEN & KIRMSE, LTD.

Bidder	Cash Payment	Price/Acre	Rental	Oil	Gas	Other

Legend
13110040
Blocks



Office of Mineral Resources, Acres: 228.7 Tract Number: 43550



TRACT 43551 - Portion of Block 5, West Cameron Area, Revised, Cameron Parish, Louisiana

The beds and bottoms of all water bodies belonging to the State of Louisiana located in Block 5, West Cameron Area, Revised, together with any present lands formed by accretion to the shoreline or islands formed therein, located in Cameron Parish, Louisiana, owned by and not presently under mineral lease as of November 13, 2013, from the State of Louisiana, the geographical area of which is more fully described as follows: Beginning at a point having Coordinates of X = 1,373,100.00 and Y = 397,675.00; thence West 5,385.00 feet to a point having Coordinates of X = 1,367,715.00 and Y = 397,675.00; thence North 4,264.13 feet to a point on the Louisiana Coastline, as decreed by the Supreme Court of the United States, as determined by a Special Master appointed therein, in litigation styled *United States v. State of Louisiana et al No. 9 Original*, in 1975, having Coordinates of X = 1,367,715.00 and Y = 401,939.13; thence Northeasterly along said Coastline on a straight line to a point having Coordinates of X = 1,367,859.34 and Y = 402,075.00; thence East 5,240.66 feet to a point having Coordinates of X = 1,373,100.00 and Y = 402,075.00; thence South 4,400.00 feet to the point of beginning, containing **543.71 acres**, all as more particularly outlined on a plat on file in the Office of Mineral Resources, Department of Natural Resources. All bearings, distances and coordinates are based on Louisiana Coordinate System of 1927, (North or South Zone).

NOTE: The above description of the Tract nominated for lease has been provided and corrected, where required, exclusively by the nomination party. Any mineral lease selected from this Tract and awarded by the Louisiana State Mineral and Energy Board shall be without warranty of any kind, either express, implied, or statutory, including, but not limited to, the implied warranties of merchantability and fitness for a particular purpose. Should the mineral lease awarded by the Louisiana State Mineral and Energy Board be subsequently modified, cancelled or abrogated due to the existence of conflicting leases, operating agreements, private claims or other future obligations or conditions which may affect all or any portion of the leased Tract, it shall not relieve the Lessee of the obligation to pay any bonus due thereon to the Louisiana State Mineral and Energy Board, nor shall the Louisiana State Mineral and Energy Board be obligated to refund any consideration paid by the Lessor prior to such modification, cancellation, or abrogation, including, but not limited to, bonuses, rentals and royalties.

NOTE: The State of Louisiana does hereby reserve, and this lease shall be subject to, the imprescriptible right of surface use in the nature of a servitude in favor of the Department of Natural Resources, including its Offices and Commissions, for the sole purpose of implementing, constructing, servicing and maintaining approved coastal zone management and/or restoration projects. Utilization of any and all rights derived under this lease by the mineral lessee, its agents, successors or assigns, shall not interfere with nor hinder the reasonable surface use by the

Department of Natural Resources, its Offices or Commissions, as herein above reserved.

Applicant: ALLEN & KIRMSE, LTD.

Bidder	Cash Payment	Price/Acre	Rental	Oil	Gas	Other

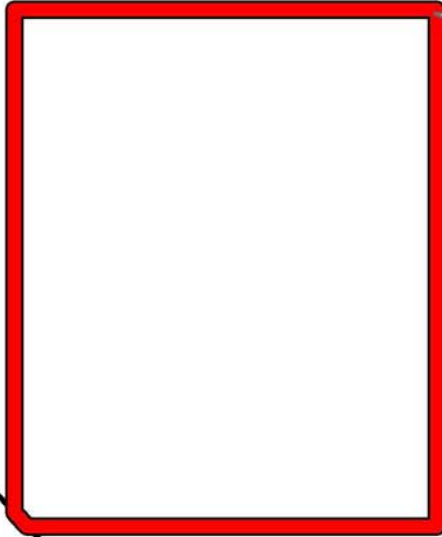
Legend
 13110063
 Blocks



CAMERON PARISH

GULF OF MEXICO

WC0005



P.O.B.

WEST CAMERON AREA, REVISED

WC0026